

Data Path : Z:\voasrv\HPCHEM1\MSVOA_W\Data\VW100523\
 Data File : VW027246.D
 Acq On : 05 Oct 2023 19:18
 Operator : SY/MD
 Sample : 047747-10
 Misc : 5.60g/10mL/MSVOA_W/SOIL
 ALS Vial : 1 Sample Multiplier: 1

Instrument :
 MSVOA_W
 ClientSampleId :

Quant Time: Oct 06 01:27:26 2023
 Quant Method : Z:\voasrv\HPCHEM1\MSVOA_W\Method\SFAMWLM092723SMA.M
 Quant Title : SFAM01.0
 QLast Update : Wed Oct 04 22:49:04 2023
 Response via : Initial Calibration

Compound	R.T.	QIon	Response	Conc	Units	Dev(Min)

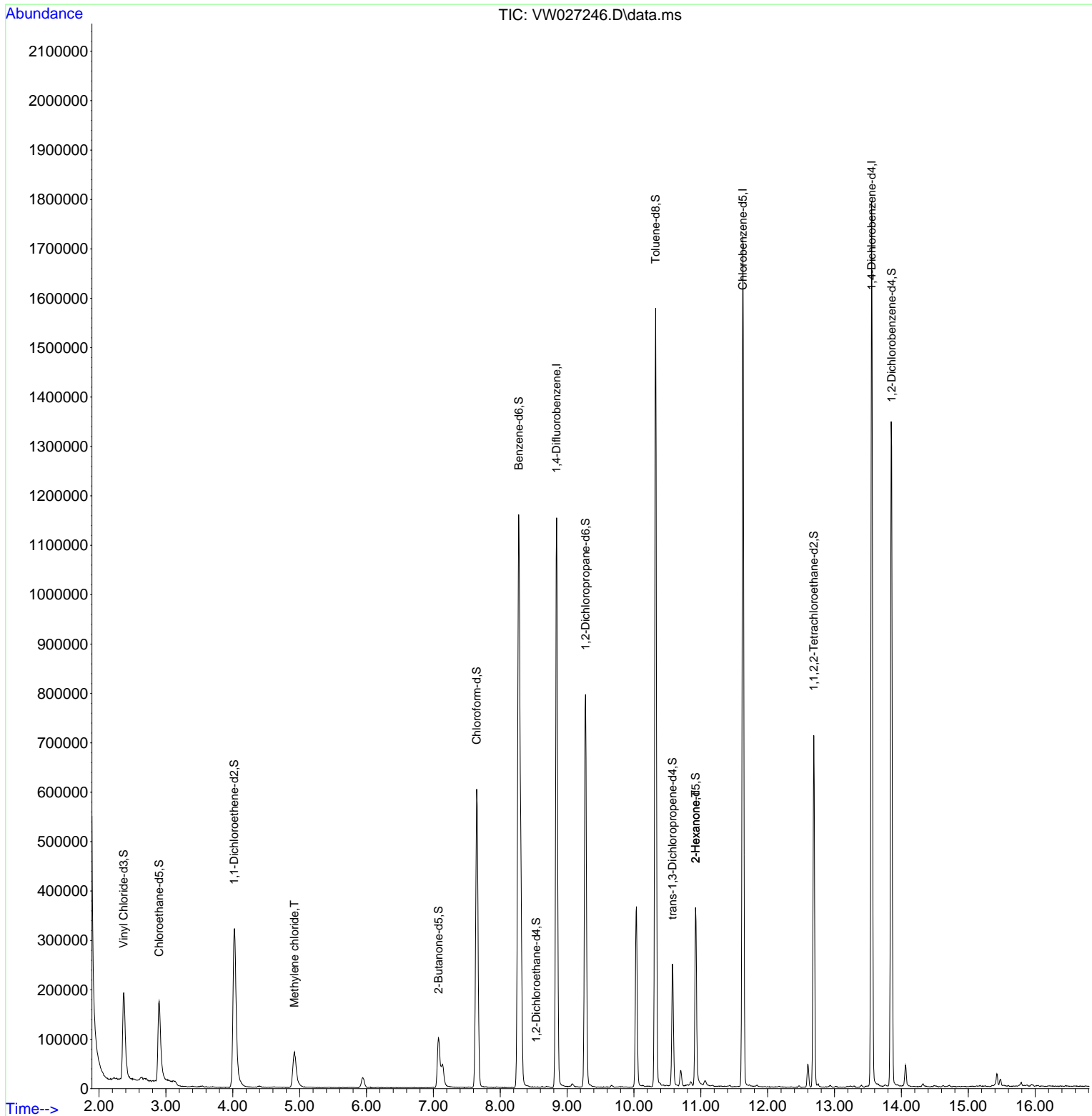
Internal Standards						
1) 1,4-Difluorobenzene	8.843	114	980032	25.000	ug/L	0.00
28) Chlorobenzene-d5	11.629	117	961948	25.000	ug/L	0.00
58) 1,4-Dichlorobenzene-d4	13.556	152	467176	25.000	ug/L	0.00
System Monitoring Compounds						
4) Vinyl Chloride-d3	2.369	65	315688	20.502	ug/L	0.00
Spiked Amount	25.000	Range	30 - 150	Recovery	=	82.000%
7) Chloroethane-d5	2.899	69	268386	22.054	ug/L	0.00
Spiked Amount	25.000	Range	30 - 150	Recovery	=	88.200%
11) 1,1-Dichloroethene-d2	4.021	65	123715	19.338	ug/L	0.00
Spiked Amount	25.000	Range	45 - 110	Recovery	=	77.360%
21) 2-Butanone-d5	7.075	46	175452	55.119	ug/L	0.00
Spiked Amount	50.000	Range	20 - 135	Recovery	=	110.240%
24) Chloroform-d	7.648	84	615148	21.447	ug/L	0.00
Spiked Amount	25.000	Range	40 - 150	Recovery	=	85.800%
26) 1,2-Dichloroethane-d4	8.538	65	108	0.008	ug/L	0.23
Spiked Amount	25.000	Range	70 - 130	Recovery	=	0.040%#
32) Benzene-d6	8.276	84	1215893	20.624	ug/L	0.00
Spiked Amount	25.000	Range	20 - 135	Recovery	=	82.480%
36) 1,2-Dichloropropane-d6	9.276	67	400843	22.711	ug/L	0.00
Spiked Amount	25.000	Range	70 - 120	Recovery	=	90.840%
41) Toluene-d8	10.325	98	1048216	20.149	ug/L	0.00
Spiked Amount	25.000	Range	30 - 130	Recovery	=	80.600%
43) trans-1,3-Dichloroprop...	10.575	79	142511	20.575	ug/L	0.00
Spiked Amount	25.000	Range	30 - 135	Recovery	=	82.280%
47) 2-Hexanone-d5	10.922	63	124008	45.930	ug/L	0.00
Spiked Amount	50.000	Range	20 - 135	Recovery	=	91.860%
56) 1,1,2,2-Tetrachloroeth...	12.690	84	362910	26.867	ug/L	0.00
Spiked Amount	25.000	Range	45 - 120	Recovery	=	107.480%
66) 1,2-Dichlorobenzene-d4	13.854	152	371529	23.719	ug/L	0.00
Spiked Amount	25.000	Range	75 - 120	Recovery	=	94.880%
Target Compounds						
16) Methylene chloride	4.923	84	68174	3.554	ug/L	99
48) 2-Hexanone	10.922	43	15557	2.335	ug/L #	65

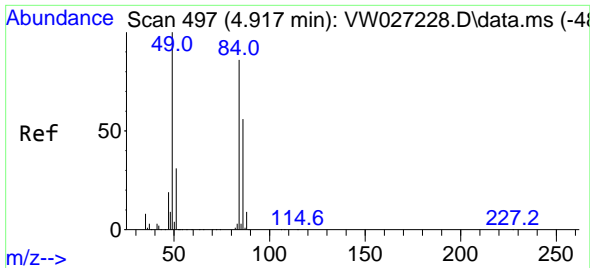
(#) = qualifier out of range (m) = manual integration (+) = signals summed

Data Path : Z:\voasrv\HPCHEM1\MSVOA_W\Data\VW100523\
 Data File : VW027246.D
 Acq On : 05 Oct 2023 19:18
 Operator : SY/MD
 Sample : 047747-10
 Misc : 5.60g/10mL/MSVOA_W/SOIL
 ALS Vial : 1 Sample Multiplier: 1

Instrument :
 MSVOA_W
 ClientSampleId :

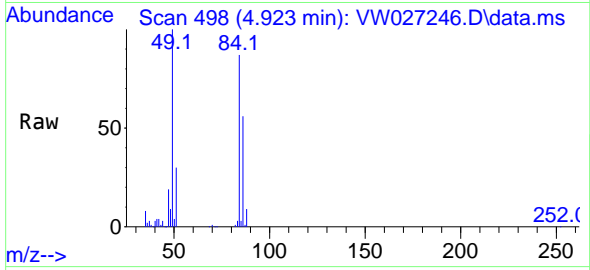
Quant Time: Oct 06 01:27:26 2023
 Quant Method : Z:\voasrv\HPCHEM1\MSVOA_W\Method\SFAMWLM092723SMA.M
 Quant Title : SFAM01.0
 QLast Update : Wed Oct 04 22:49:04 2023
 Response via : Initial Calibration



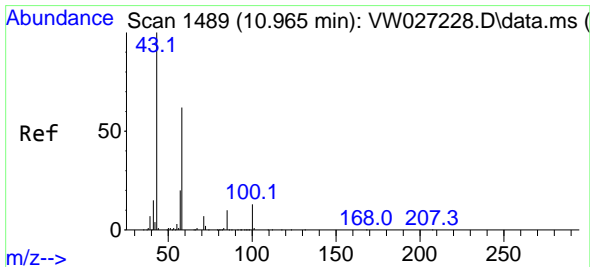
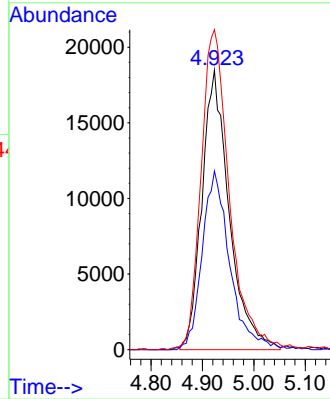
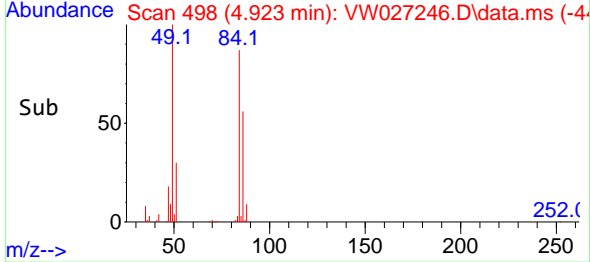


#16
 Methylene chloride
 Concen: 3.554 ug/L
 RT: 4.923 min Scan# 49
 Delta R.T. 0.006 min
 Lab File: VW027246.D
 Acq: 05 Oct 2023 19:18

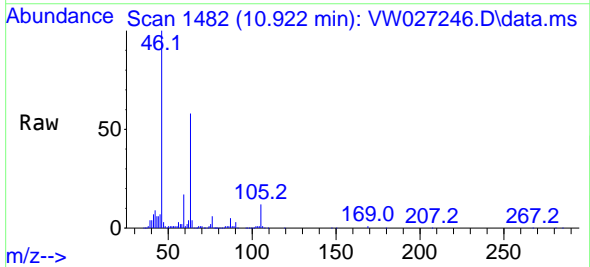
Instrument :
 MSVOA_W
 ClientSampleId :



Tgt Ion: 84 Resp: 68174
 Ion Ratio Lower Upper
 84 100
 86 63.9 45.1 83.9
 49 114.5 80.9 150.3



#48
 2-Hexanone
 Concen: 2.335 ug/L
 RT: 10.922 min Scan# 1482
 Delta R.T. -0.043 min
 Lab File: VW027246.D
 Acq: 05 Oct 2023 19:18



Tgt Ion: 43 Resp: 15557
 Ion Ratio Lower Upper
 43 100
 58 31.3 47.2 70.8#
 57 37.3 15.9 23.9#
 100 4.6 10.4 15.6#

