

Data Path : Z:\voasrv\HPCHEM1\MSVOA\_W\Data\VW100621\  
 Data File : VW020368.D  
 Acq On : 07 Oct 2021 15:40  
 Operator : SY/VA  
 Sample : M4000-05  
 Misc : 7.26g/10mL/MSVOA\_W/SOIL  
 ALS Vial : 1 Sample Multiplier: 1

**Instrument :**  
 MSVOA\_W  
**Client Sampled :**  
 EW900

Quant Time: Oct 08 05:58:37 2021  
 Quant Method : Z:\voasrv\HPCHEM1\MSVOA\_W\Method\SFAMWLM100621SMA.M  
 Quant Title : SFAM01.0  
 QLast Update : Fri Oct 08 05:56:34 2021  
 Response via : Initial Calibration

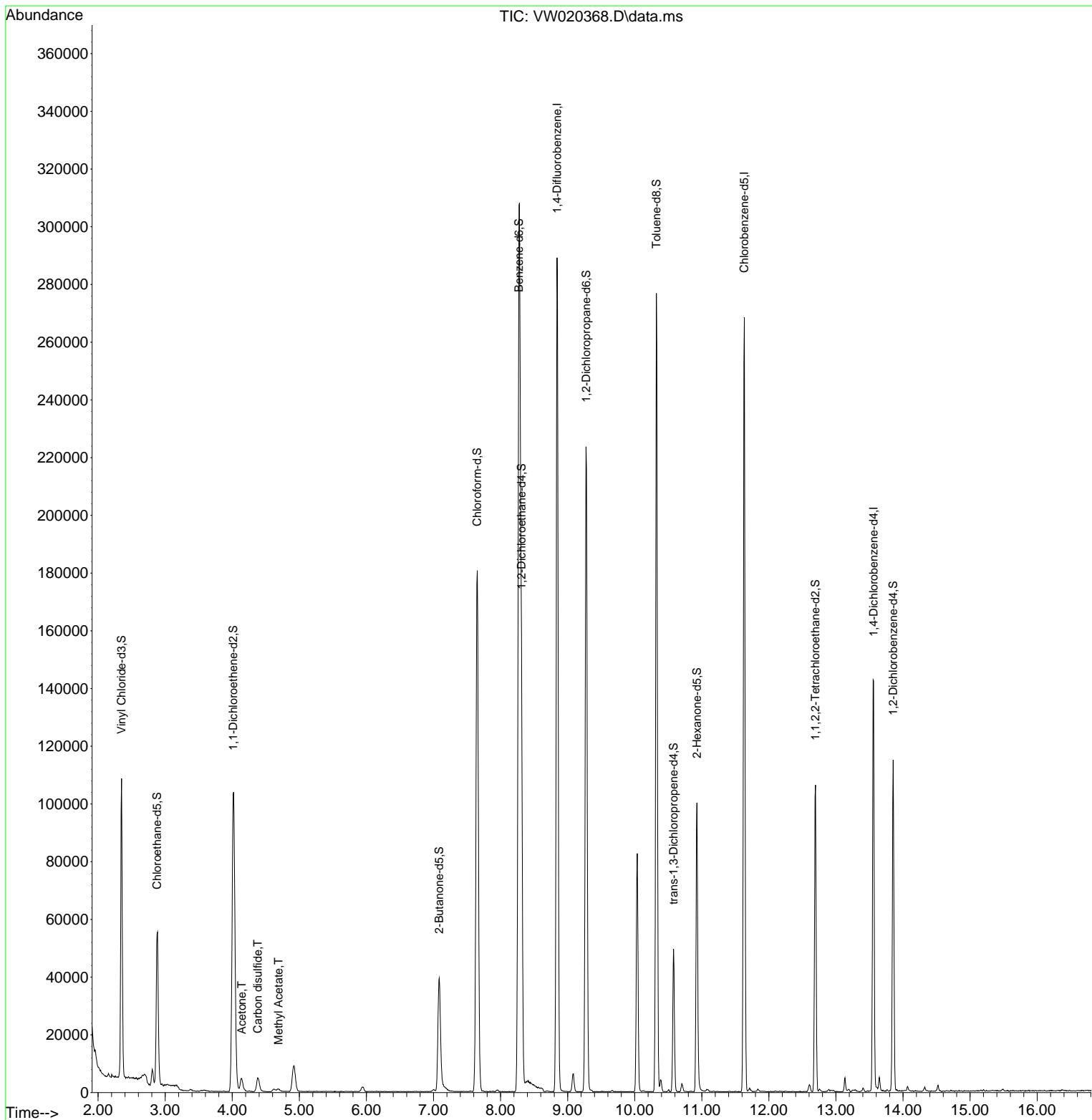
Compound	R.T.	QIon	Response	Conc	Units	Dev(Min)
-----						
Internal Standards						
1) 1,4-Difluorobenzene	8.842	114	220578	25.000	ug/L	0.00
28) Chlorobenzene-d5	11.634	117	137706	25.000	ug/L	0.00
58) 1,4-Dichlorobenzene-d4	13.560	152	35102	25.000	ug/L	0.00
System Monitoring Compounds						
4) Vinyl Chloride-d3	2.349	65	100074	32.919	ug/L	0.00
Spiked Amount	25.000	Range 30 - 150	Recovery	=	131.680%	
7) Chloroethane-d5	2.879	69	59792	45.391	ug/L	0.00
Spiked Amount	25.000	Range 30 - 150	Recovery	=	181.560%#	
11) 1,1-Dichloroethene-d2	4.013	63	108538	17.337	ug/L	0.00
Spiked Amount	25.000	Range 45 - 110	Recovery	=	69.360%	
21) 2-Butanone-d5	7.086	46	69623	90.154	ug/L	0.00
Spiked Amount	50.000	Range 20 - 135	Recovery	=	180.300%#	
24) Chloroform-d	7.653	84	180589	28.513	ug/L	0.00
Spiked Amount	25.000	Range 40 - 150	Recovery	=	114.040%	
26) 1,2-Dichloroethane-d4	8.311	65	114623	33.069	ug/L	0.00
Spiked Amount	25.000	Range 70 - 130	Recovery	=	132.280%#	
32) Benzene-d6	8.275	84	301428	36.153	ug/L	0.00
Spiked Amount	25.000	Range 20 - 135	Recovery	=	144.600%#	
36) 1,2-Dichloropropane-d6	9.274	67	102391	38.717	ug/L	0.00
Spiked Amount	25.000	Range 70 - 120	Recovery	=	154.880%#	
41) Toluene-d8	10.323	98	172664	22.865	ug/L	0.00
Spiked Amount	25.000	Range 30 - 130	Recovery	=	91.440%	
43) trans-1,3-Dichloroprop...	10.579	79	26098	24.254	ug/L	0.00
Spiked Amount	25.000	Range 30 - 135	Recovery	=	97.000%	
47) 2-Hexanone-d5	10.927	63	32051	87.686	ug/L	0.00
Spiked Amount	50.000	Range 20 - 135	Recovery	=	175.380%#	
56) 1,1,2,2-Tetrachloroeth...	12.695	84	53997	29.255	ug/L	0.00
Spiked Amount	25.000	Range 45 - 120	Recovery	=	117.000%	
66) 1,2-Dichlorobenzene-d4	13.853	152	27359	22.258	ug/L	0.00
Spiked Amount	25.000	Range 75 - 120	Recovery	=	89.040%	
Target Compounds						
						Qvalue
13) Acetone	4.141	43	8827	11.118	ug/L	75
14) Carbon disulfide	4.379	76	10768	1.067	ug/L #	94
15) Methyl Acetate	4.690	43	2177	1.500	ug/L #	85
-----						

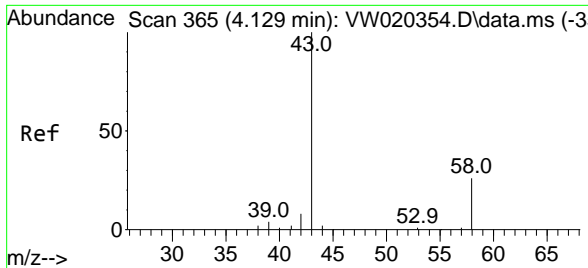
(#) = qualifier out of range (m) = manual integration (+) = signals summed

Data Path : Z:\voasrv\HPCHEM1\MSVOA\_W\Data\VW100621\  
 Data File : VW020368.D  
 Acq On : 07 Oct 2021 15:40  
 Operator : SY/VA  
 Sample : M4000-05  
 Misc : 7.26g/10mL/MSVOA\_W/SOIL  
 ALS Vial : 1 Sample Multiplier: 1

Instrument :  
 MSVOA\_W  
 Client Sampled :  
 EW900

Quant Time: Oct 08 05:58:37 2021  
 Quant Method : Z:\voasrv\HPCHEM1\MSVOA\_W\Method\SFAMWLM100621SMA.M  
 Quant Title : SFAM01.0  
 QLast Update : Fri Oct 08 05:56:34 2021  
 Response via : Initial Calibration

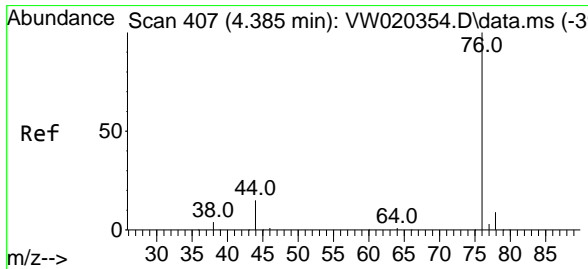
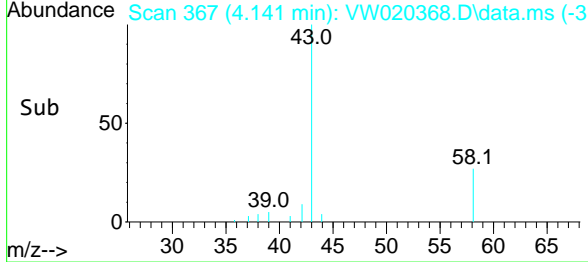
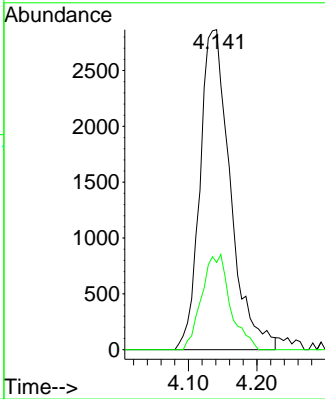
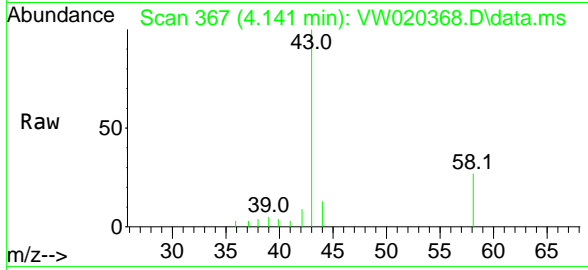




#13  
 Acetone  
 Concen: 11.118 ug/L  
 RT: 4.141 min Scan# 367  
 Delta R.T. 0.012 min  
 Lab File: VW020368.D  
 Acq: 07 Oct 2021 15:40

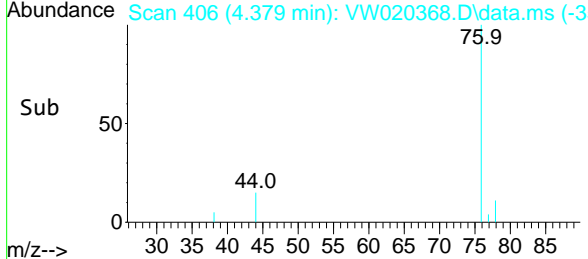
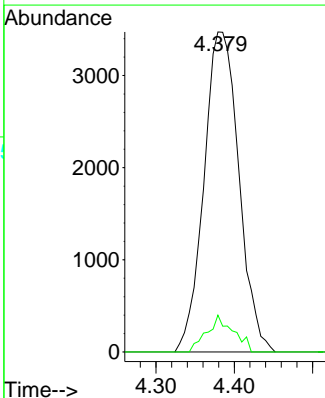
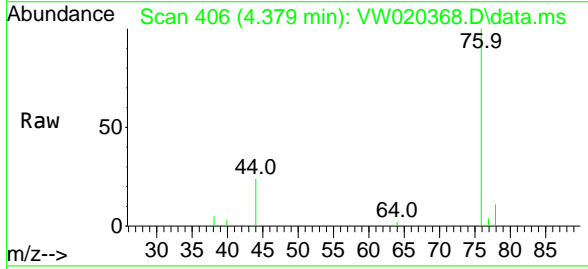
Instrument :  
 MSVOA\_W  
 ClientSampled :  
 EW900

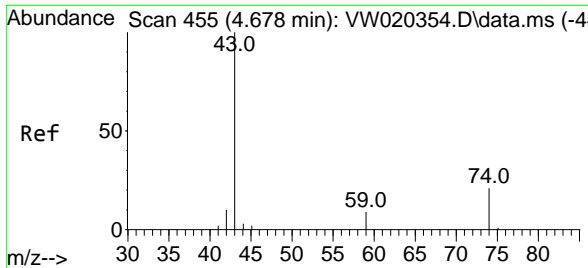
Tgt Ion: 43 Resp: 8827  
 Ion Ratio Lower Upper  
 43 100  
 58 16.0 0.0 58.4



#14  
 Carbon disulfide  
 Concen: 1.067 ug/L  
 RT: 4.379 min Scan# 406  
 Delta R.T. -0.006 min  
 Lab File: VW020368.D  
 Acq: 07 Oct 2021 15:40

Tgt Ion: 76 Resp: 10768  
 Ion Ratio Lower Upper  
 76 100  
 78 11.5 7.4 11.2#





#15  
 Methyl Acetate  
 Concen: 1.500 ug/L  
 RT: 4.690 min Scan# 457  
 Delta R.T. 0.012 min  
 Lab File: VW020368.D  
 Acq: 07 Oct 2021 15:40

**Instrument :**  
 MSVOA\_W  
**ClientSampled :**  
 EW900

Tgt Ion: 43 Resp: 2177  
 Ion Ratio Lower Upper  
 43 100  
 74 13.1 16.1 24.1#

