

Data Path : Z:\voasrv\HPCHEM1\MSVOA_W\Data\VW100621\
 Data File : VW020322.D
 Acq On : 06 Oct 2021 18:59
 Operator : SY/VA
 Sample : M4001-06
 Misc : 7.09g/10mL/MSVOA_W/SOIL
 ALS Vial : 1 Sample Multiplier: 1

Instrument :
 MSVOA_W
 ClientSampleId :
 EW919

Integration Parameters: LSCINT.P

Integrator: RTE
 Smoothing : OFF Filtering: 5
 Sampling : 1 Min Area: 0 % of largest Peak
 Start Thrs: 0.2 Max Peaks: 100
 Stop Thrs : 0 Peak Location: TOP

If leading or trailing edge < 100 prefer < Baseline drop else tangent >
 Peak separation: 5

Method : Z:\voasrv\HPCHEM1\MSVOA_W\Method\SFAMWLM100621SMA.M
 Title : SFAM01.0

Signal : TIC: VW020322.D\data.ms

peak #	R.T. min	first scan	max scan	last scan	PK TY	peak height	corr. area	corr. % max.	% of total
1	2.349	68	73	84	rVB	83822	135399	12.84%	1.166%
2	2.812	143	149	154	rBV	27656	52955	5.02%	0.456%
3	2.879	155	160	172	rVB	42901	92642	8.78%	0.798%
4	3.385	236	243	247	rBV3	858	1959	0.19%	0.017%
5	3.556	263	271	272	rBV5	803	1660	0.16%	0.014%
6	3.739	296	301	303	rBV3	527	801	0.08%	0.007%
7	3.818	312	314	315	rBV	170	153	0.01%	0.001%
8	3.910	328	329	333	rBV2	131	138	0.01%	0.001%
9	4.019	335	347	364	rBV	104888	310580	29.45%	2.675%
10	4.208	371	378	383	rBV2	2178	6046	0.57%	0.052%
11	4.355	401	402	404	rVV2	220	235	0.02%	0.002%
12	4.385	404	407	409	rVV2	359	525	0.05%	0.005%
13	4.525	427	430	431	rBV2	148	137	0.01%	0.001%
14	4.617	439	445	446	rBV2	406	589	0.06%	0.005%
15	4.684	450	456	466	rVV3	1154	3563	0.34%	0.031%
16	4.757	466	468	471	rVV3	174	256	0.02%	0.002%
17	4.788	471	473	476	rVB3	181	226	0.02%	0.002%
18	4.916	483	494	506	rBV3	7795	26647	2.53%	0.230%
19	5.117	526	527	529	rBV2	216	200	0.02%	0.002%
20	5.233	543	546	548	rBV	209	228	0.02%	0.002%
21	5.684	617	620	621	rBV	166	178	0.02%	0.002%
22	5.940	655	662	669	rBV5	1466	4328	0.41%	0.037%
23	5.995	669	671	672	rBV2	427	428	0.04%	0.004%
24	6.190	700	703	704	rBV2	152	150	0.01%	0.001%
25	6.214	704	707	709	rBV2	347	432	0.04%	0.004%
26	6.488	749	752	754	rBV2	110	144	0.01%	0.001%
27	7.086	841	850	856	rBV	5124	14317	1.36%	0.123%
28	7.269	875	880	884	rBV2	96	171	0.02%	0.001%
29	7.318	885	888	891	rVV2	90	159	0.02%	0.001%
30	7.379	896	898	901	rBV	120	137	0.01%	0.001%
31	7.507	918	919	922	rBV	119	137	0.01%	0.001%
32	7.537	922	924	932	rVV2	225	415	0.04%	0.004%
33	7.653	932	943	956	rVV	193289	470423	44.60%	4.052%
34	7.769	959	962	963	rVV	232	263	0.02%	0.002%
35	7.787	963	965	966	rVV	221	154	0.01%	0.001%
36	7.811	966	969	971	rVV2	133	137	0.01%	0.001%

Data Path : Z:\voasrv\HPCHEM1\MSVOA_W\Data\VW100621\
 Data File : VW020322.D
 Acq On : 06 Oct 2021 18:59
 Operator : SY/VA
 Sample : M4001-06
 Misc : 7.09g/10mL/MSVOA_W/SOIL
 ALS Vial : 1 Sample Multiplier: 1

Instrument :
 MSVOA_W
 ClientSampleId :
 EW919

Integration Parameters: LSCINT.P

Integrator: RTE
 Smoothing : OFF
 Sampling : 1
 Start Thrs: 0.2
 Stop Thrs : 0

Filtering: 5
 Min Area: 0 % of largest Peak
 Max Peaks: 100
 Peak Location: TOP

If leading or trailing edge < 100 prefer < Baseline drop else tangent >
 Peak separation: 5

Method : Z:\voasrv\HPCHEM1\MSVOA_W\Method\SFAMWLM100621SMA.M
 Title : SFAM01.0

37	7.872	971	979	987	rVV3	4204	10730	1.02%	0.092%
38	7.952	988	992	999	rVB3	1061	1863	0.18%	0.016%
39	8.159	1023	1026	1030	rBV3	147	198	0.02%	0.002%
40	8.195	1030	1032	1035	rVB2	131	147	0.01%	0.001%
41	8.275	1035	1045	1061	rBV2	344379	1054752	100.00%	9.086%
42	8.695	1108	1114	1119	rBV4	447	785	0.07%	0.007%
43	8.762	1123	1125	1130	rVB2	142	165	0.02%	0.001%
44	8.842	1130	1138	1151	rBV	377285	748497	70.96%	6.448%
45	8.964	1156	1158	1160	rVB	165	151	0.01%	0.001%
46	8.982	1160	1161	1164	rVB2	170	143	0.01%	0.001%
47	9.092	1170	1179	1187	rBV	34995	68811	6.52%	0.593%
48	9.275	1201	1209	1223	rBV	265244	540338	51.23%	4.655%
49	9.384	1223	1227	1235	rVB5	2729	5370	0.51%	0.046%
50	9.457	1238	1239	1242	rVB	183	157	0.01%	0.001%
51	9.604	1253	1263	1269	rBV4	1902	4333	0.41%	0.037%
52	9.665	1269	1273	1279	rVB3	536	1079	0.10%	0.009%
53	9.750	1279	1287	1294	rBV3	5885	11621	1.10%	0.100%
54	9.902	1305	1312	1315	rBV4	2106	4196	0.40%	0.036%
55	9.945	1315	1319	1323	rVB2	2594	3779	0.36%	0.033%
56	9.988	1323	1326	1328	rBV	2022	2638	0.25%	0.023%
57	10.037	1328	1334	1341	rVB	41975	72348	6.86%	0.623%
58	10.213	1356	1363	1373	rBV3	5171	9654	0.92%	0.083%
59	10.323	1373	1381	1389	rBV	402281	700676	66.43%	6.036%
60	10.390	1389	1392	1405	rVB2	5869	11271	1.07%	0.097%
61	10.506	1405	1411	1417	rBB6	1289	2916	0.28%	0.025%
62	10.579	1417	1423	1427	rBV	37046	67446	6.39%	0.581%
63	10.622	1427	1430	1435	rVB2	27303	41920	3.97%	0.361%
64	10.701	1440	1443	1449	rVB2	2765	4778	0.45%	0.041%
65	10.774	1449	1455	1456	rBV2	1890	2743	0.26%	0.024%
66	10.811	1457	1461	1463	rBV3	2215	2818	0.27%	0.024%
67	10.860	1463	1469	1473	rBV4	6766	13034	1.24%	0.112%
68	10.927	1473	1480	1490	rVB3	32735	70869	6.72%	0.610%
69	11.036	1490	1498	1500	rBV4	6009	11298	1.07%	0.097%
70	11.116	1506	1511	1513	rBV2	8087	12864	1.22%	0.111%
71	11.232	1522	1530	1536	rBV	56248	107885	10.23%	0.929%
72	11.286	1536	1539	1541	rVV3	5008	7890	0.75%	0.068%
73	11.329	1541	1546	1551	rVV2	36626	72157	6.84%	0.622%
74	11.378	1551	1554	1559	rVV3	13517	27597	2.62%	0.238%
75	11.439	1559	1564	1571	rVB	39041	70695	6.70%	0.609%
76	11.512	1571	1576	1582	rBV	8252	14209	1.35%	0.122%

Data Path : Z:\voasrv\HPCHEM1\MSVOA_W\Data\VW100621\
 Data File : VW020322.D
 Acq On : 06 Oct 2021 18:59
 Operator : SY/VA
 Sample : M4001-06
 Misc : 7.09g/10mL/MSVOA_W/SOIL
 ALS Vial : 1 Sample Multiplier: 1

Instrument :
 MSVOA_W
 ClientSampleId :
 EW919

Integration Parameters: LSCINT.P
 Integrator: RTE
 Smoothing : OFF Filtering: 5
 Sampling : 1 Min Area: 0 % of largest Peak
 Start Thrs: 0.2 Max Peaks: 100
 Stop Thrs : 0 Peak Location: TOP

If leading or trailing edge < 100 prefer < Baseline drop else tangent >
 Peak separation: 5

Method : Z:\voasrv\HPCHEM1\MSVOA_W\Method\SFAMWLM100621SMA.M
 Title : SFAM01.0

77	11.634	1587	1596	1605	rBV	471240	834717	79.14%	7.190%
78	11.768	1611	1618	1622	rBV	48729	85304	8.09%	0.735%
79	11.823	1622	1627	1632	rVV4	30191	70299	6.66%	0.606%
80	11.878	1632	1636	1646	rVB5	29332	89941	8.53%	0.775%
81	11.975	1646	1652	1659	rBV3	54303	111150	10.54%	0.957%
82	12.140	1670	1679	1686	rBV3	75881	189712	17.99%	1.634%
83	12.231	1686	1694	1695	rBV2	32559	55142	5.23%	0.475%
84	12.365	1706	1716	1722	rBV	179450	390340	37.01%	3.362%
85	12.451	1725	1730	1736	rBV4	45846	98558	9.34%	0.849%
86	12.615	1752	1757	1762	rVB3	23539	41705	3.95%	0.359%
87	12.695	1762	1770	1775	rBV	206865	408477	38.73%	3.519%
88	12.780	1778	1784	1790	rVB	574725	953015	90.35%	8.209%
89	12.865	1790	1798	1802	rBV4	63988	161450	15.31%	1.391%
90	12.951	1804	1812	1823	rVB6	128349	429443	40.72%	3.699%
91	13.085	1829	1834	1837	rVB2	82323	121783	11.55%	1.049%
92	13.164	1844	1847	1849	rBV2	35154	49299	4.67%	0.425%
93	13.262	1859	1863	1865	rBV2	50043	76206	7.23%	0.656%
94	13.554	1906	1911	1919	rVB	374510	631841	59.90%	5.443%
95	13.694	1929	1934	1939	rBV2	219486	361908	34.31%	3.118%
96	13.853	1951	1960	1969	rBV3	322793	822568	77.99%	7.086%
97	14.012	1982	1986	1992	rVB	149273	251566	23.85%	2.167%
98	14.383	2042	2047	2051	rBV	86781	133635	12.67%	1.151%
99	14.548	2069	2074	2079	rBV	188058	283693	26.90%	2.444%
100	14.969	2139	2143	2146	rBV2	27011	45432	4.31%	0.391%

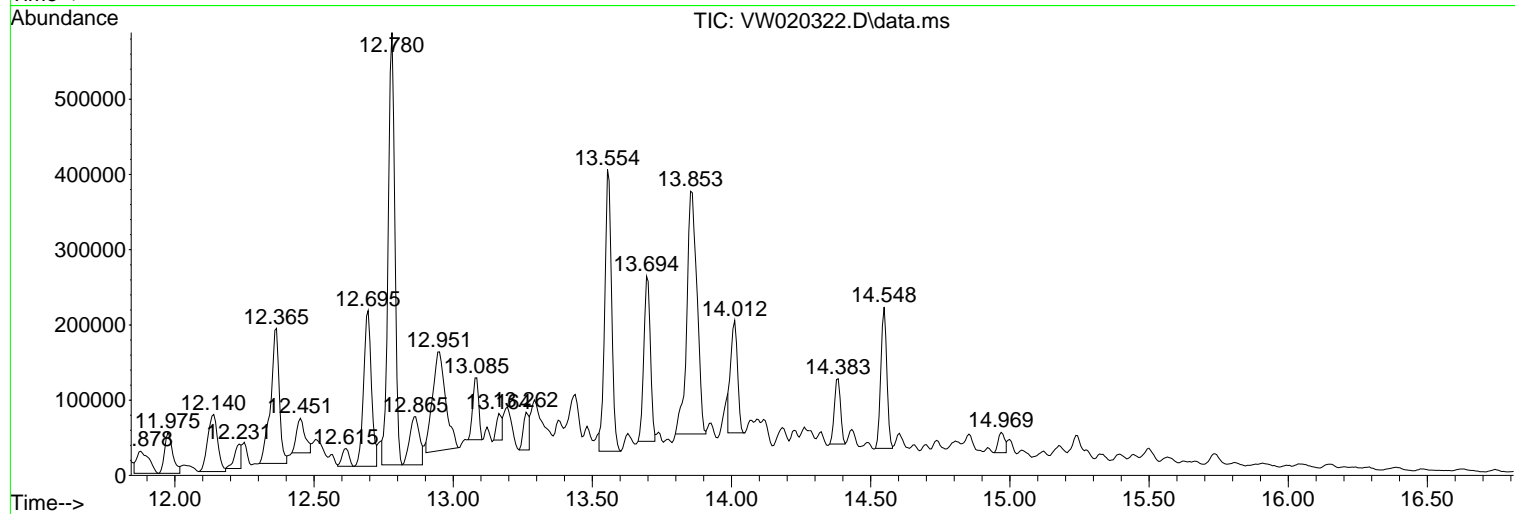
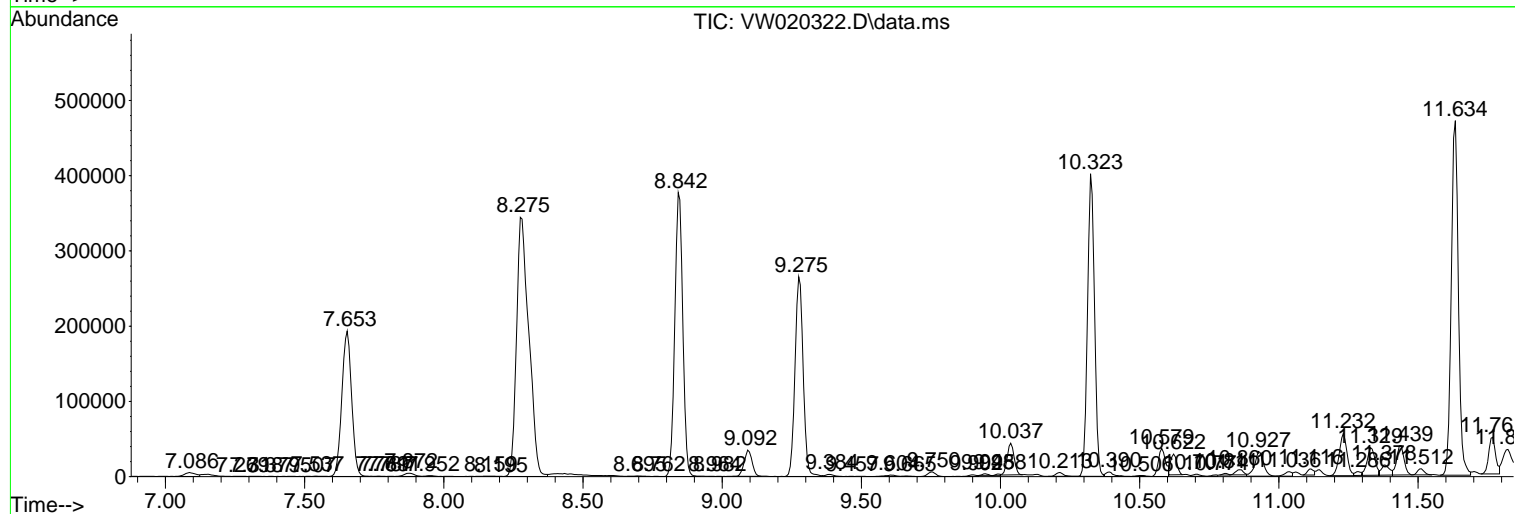
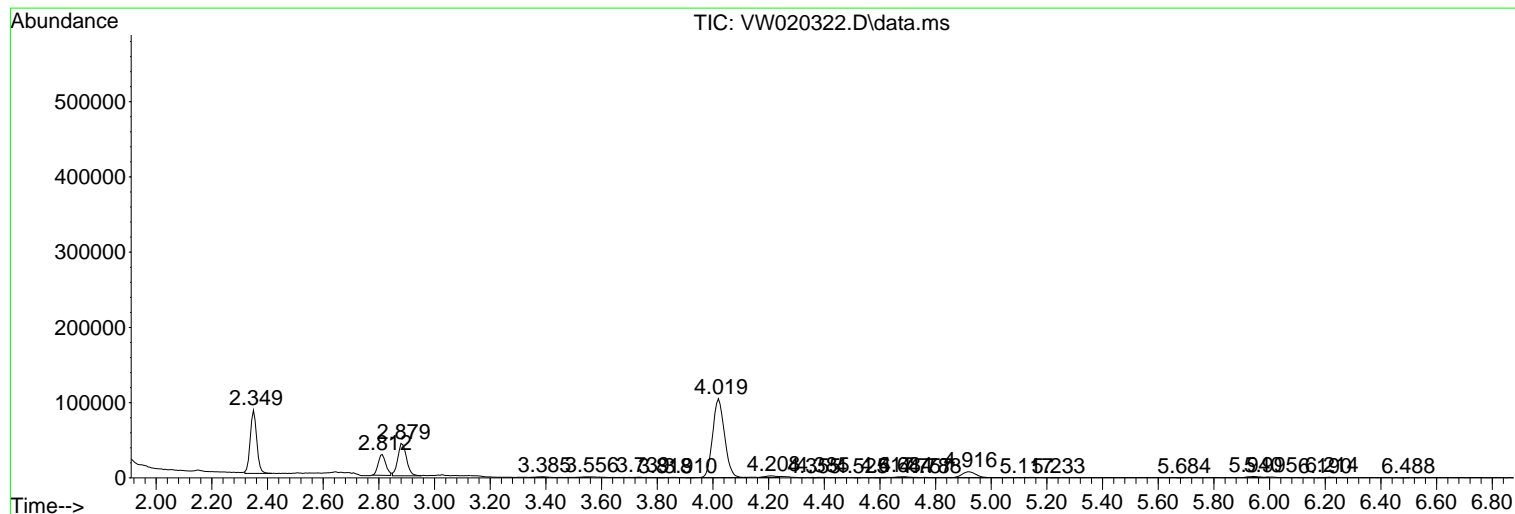
Sum of corrected areas: 11608917

Data Path : Z:\voasrv\HPCHEM1\MSVOA_W\Data\VW100621\
 Data File : VW020322.D
 Acq On : 06 Oct 2021 18:59
 Operator : SY/VA
 Sample : M4001-06
 Misc : 7.09g/10mL/MSVOA_W/SOIL
 ALS Vial : 1 Sample Multiplier: 1

Instrument :
 MSVOA_W
 ClientSampleId :
 EW919

Quant Method : Z:\voasrv\HPCHEM1\MSVOA_W\Method\SFAMWLM100621SMA.M
 Quant Title : SFAM01.0

TIC Library : C:\Database\NIST20.L
 TIC Integration Parameters: LSCINT.P



Data Path : Z:\voasrv\HPCHEM1\MSVOA_W\Data\VW100621\
 Data File : VW020322.D
 Acq On : 06 Oct 2021 18:59
 Operator : SY/VA
 Sample : M4001-06
 Misc : 7.09g/10mL/MSVOA_W/SOIL
 ALS Vial : 1 Sample Multiplier: 1

Instrument :
 MSVOA_W
 ClientSampleID :
 EW919

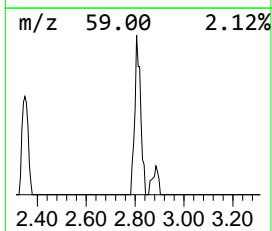
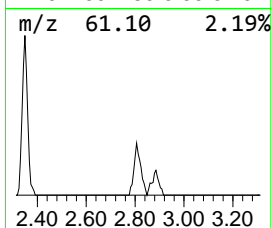
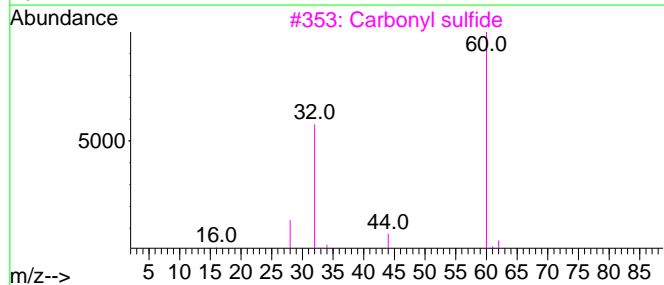
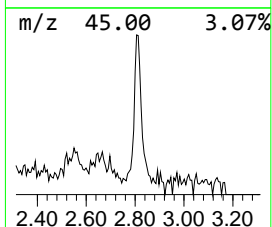
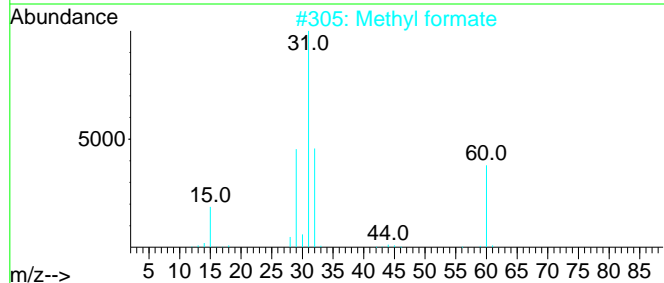
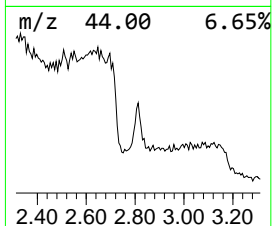
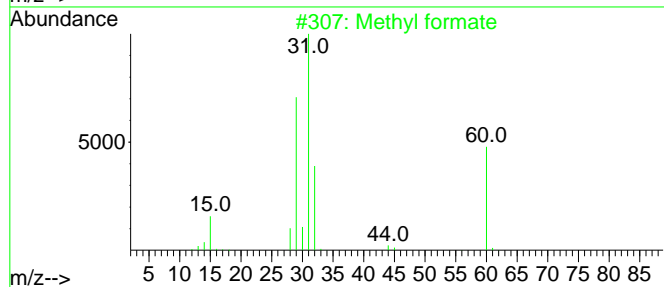
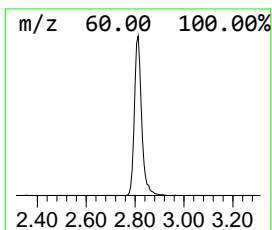
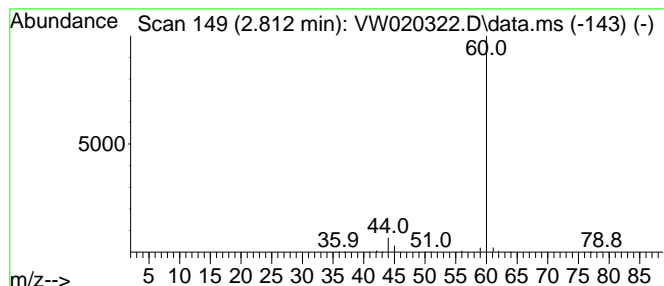
Quant Method : Z:\voasrv\HPCHEM1\MSVOA_W\Method\SFAMWLM100621SMA.M
 Quant Title : SFAM01.0

TIC Library : C:\Database\NIST20.L
 TIC Integration Parameters: LSCINT.P

 Peak Number 1 unknown-01 Concentration Rank 23

R.T.	EstConc	Area	Relative to ISTD	R.T.
2.812	1.77 ug/L	52955	1,4-Difluorobenzene	8.842

Hit#	of	5	Tentative ID	MW	MolForm	CAS#	Qual
1			Methyl formate	60	C2H4O2	000107-31-3	7
2			Methyl formate	60	C2H4O2	000107-31-3	7
3			Carbonyl sulfide	60	COS	000463-58-1	5
4			Formamidoxime	60	CH4N2O	000624-82-8	5
5			Urea	60	CH4N2O	000057-13-6	5



Data Path : Z:\voasrv\HPCHEM1\MSVOA_W\Data\VW100621\
 Data File : VW020322.D
 Acq On : 06 Oct 2021 18:59
 Operator : SY/VA
 Sample : M4001-06
 Misc : 7.09g/10mL/MSVOA_W/SOIL
 ALS Vial : 1 Sample Multiplier: 1

Instrument :
 MSVOA_W
 ClientSampled :
 EW919

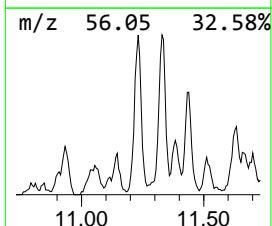
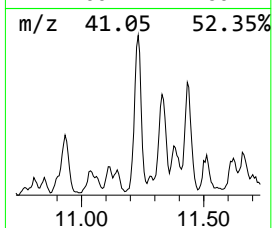
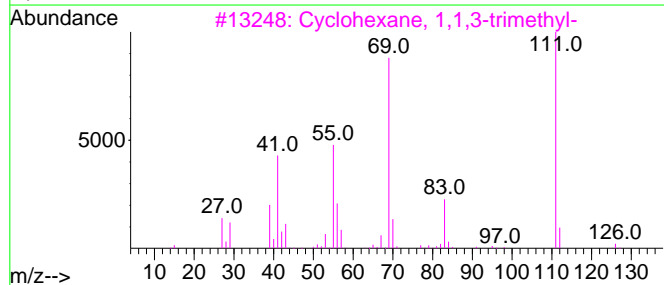
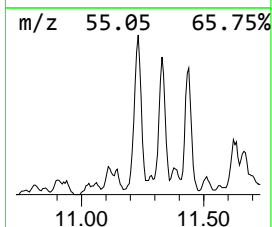
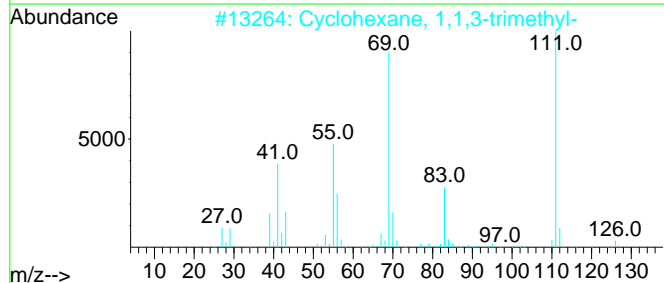
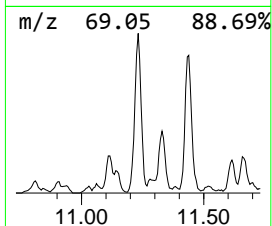
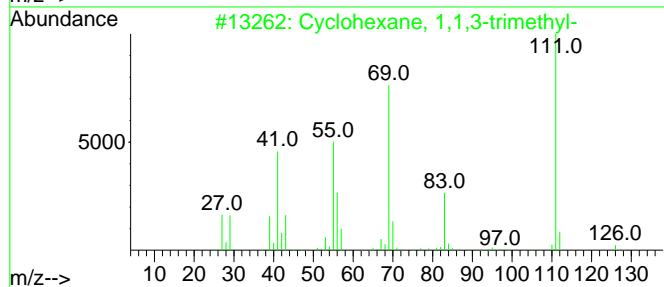
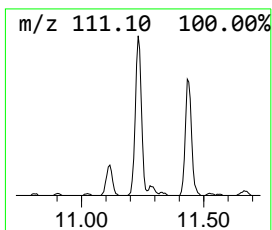
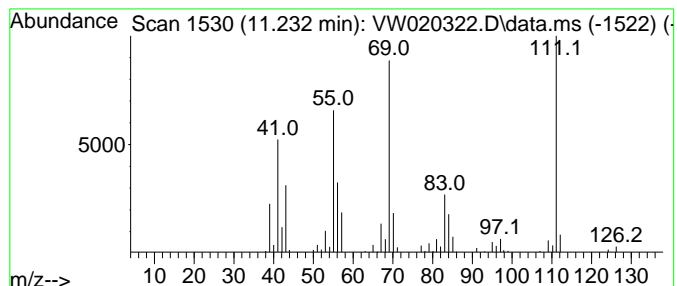
Quant Method : Z:\voasrv\HPCHEM1\MSVOA_W\Method\SFAMWLM100621SMA.M
 Quant Title : SFAM01.0

TIC Library : C:\Database\NIST0.L
 TIC Integration Parameters: LSCINT.P

 Peak Number 3 (DEL) Alkane: Cyclic11.232 Concentration Rank 12

R.T.	EstConc	Area	Relative to ISTD	R.T.
11.232	3.23 ug/L	107885	Chlorobenzene-d5	11.634

Hit#	of	5	Tentative ID	MW	MolForm	CAS#	Qual
1			Cyclohexane, 1,1,3-trimethyl-	126	C9H18	003073-66-3	90
2			Cyclohexane, 1,1,3-trimethyl-	126	C9H18	003073-66-3	90
3			Cyclohexane, 1,1,3-trimethyl-	126	C9H18	003073-66-3	87
4			Cyclohexane, 1,1,3-trimethyl-	126	C9H18	003073-66-3	87
5			Cyclooctane, butyl-	168	C12H24	016538-93-5	72



Data Path : Z:\voasrv\HPCHEM1\MSVOA_W\Data\VW100621\
 Data File : VW020322.D
 Acq On : 06 Oct 2021 18:59
 Operator : SY/VA
 Sample : M4001-06
 Misc : 7.09g/10mL/MSVOA_W/SOIL
 ALS Vial : 1 Sample Multiplier: 1

Instrument :
 MSVOA_W
 ClientSampled :
 EW919

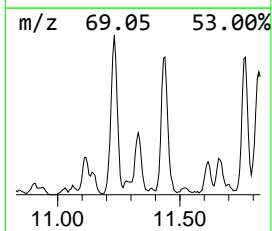
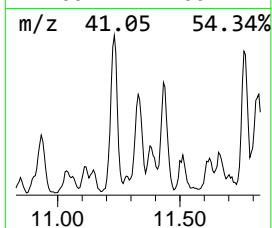
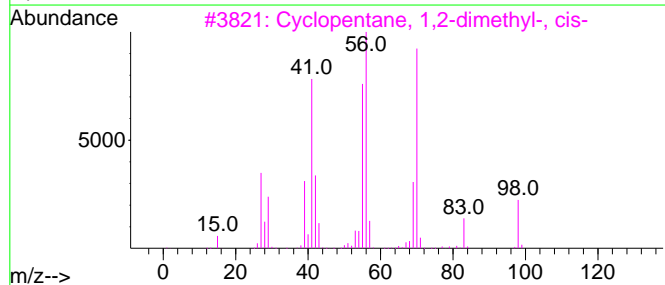
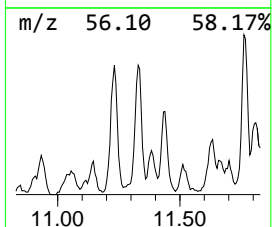
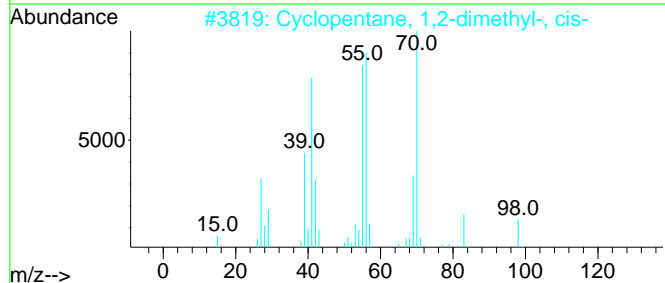
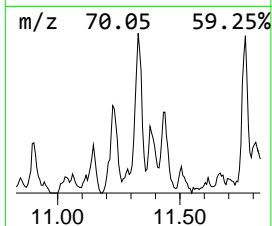
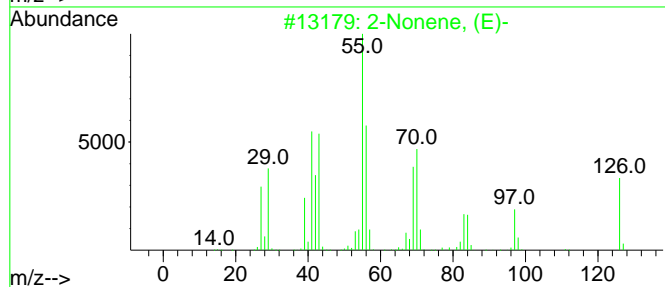
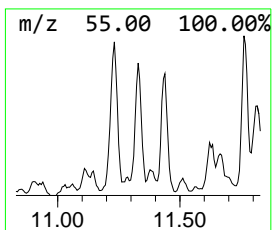
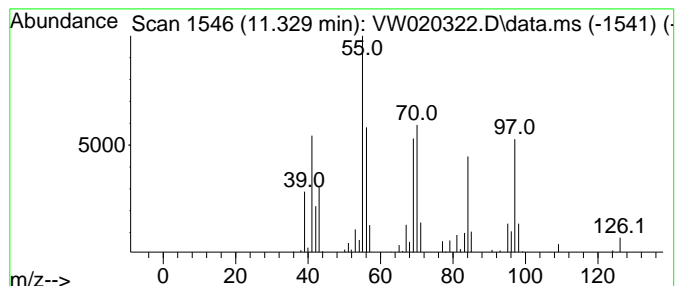
Quant Method : Z:\voasrv\HPCHEM1\MSVOA_W\Method\SFAMWLM100621SMA.M
 Quant Title : SFAM01.0

TIC Library : C:\Database\NIST20.L
 TIC Integration Parameters: LSCINT.P

 Peak Number 4 (DEL) Alkane: Straight-Chai... Concentration Rank 18

R.T.	EstConc	Area	Relative to ISTD	R.T.
11.329	2.16 ug/L	72157	Chlorobenzene-d5	11.634

Hit#	of 5	Tentative ID	MW	MolForm	CAS#	Qual
1		2-Nonene, (E)-	126	C9H18	006434-78-2	52
2		Cyclopentane, 1,2-dimethyl-, cis-	98	C7H14	001192-18-3	50
3		Cyclopentane, 1,2-dimethyl-, cis-	98	C7H14	001192-18-3	50
4		Pentane, 2-cyclopropyl-	112	C8H16	005458-16-2	46
5		cis-3-Nonene	126	C9H18	020237-46-1	46



Data Path : Z:\voasrv\HPCHEM1\MSVOA_W\Data\VW100621\
 Data File : VW020322.D
 Acq On : 06 Oct 2021 18:59
 Operator : SY/VA
 Sample : M4001-06
 Misc : 7.09g/10mL/MSVOA_W/SOIL
 ALS Vial : 1 Sample Multiplier: 1

Instrument :
 MSVOA_W
 ClientSampled :
 EW919

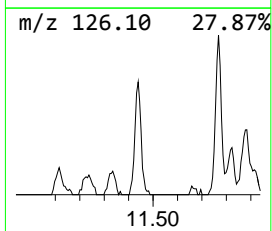
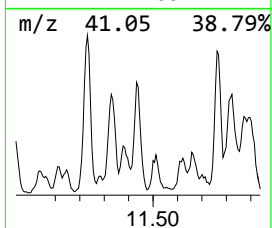
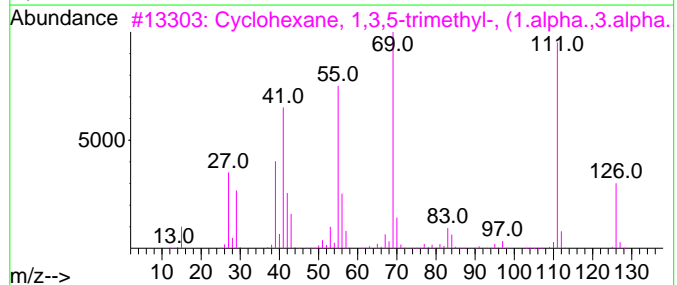
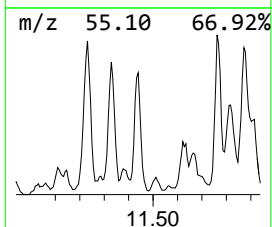
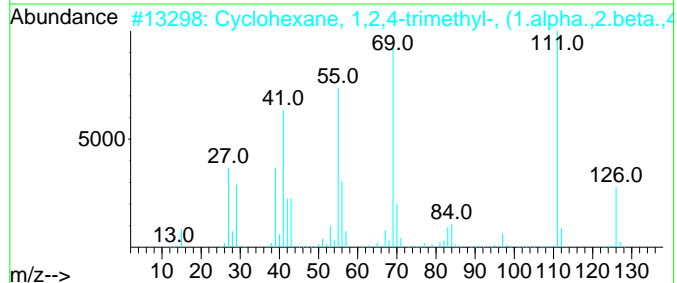
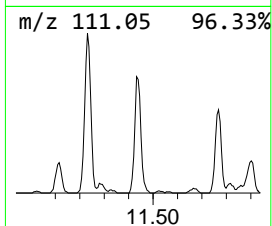
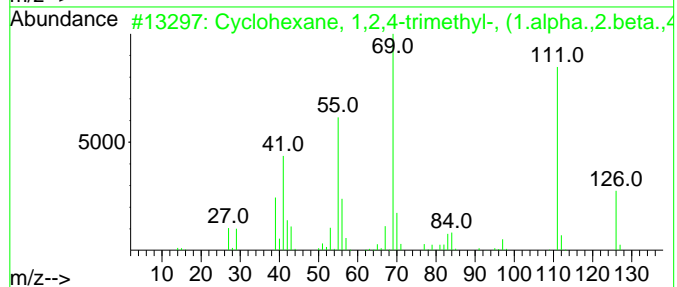
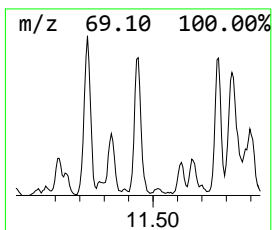
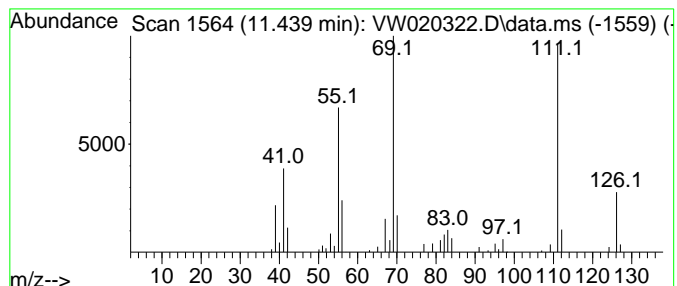
Quant Method : Z:\voasrv\HPCHEM1\MSVOA_W\Method\SFAMWLM100621SMA.M
 Quant Title : SFAM01.0

TIC Library : C:\Database\NIST0.L
 TIC Integration Parameters: LSCINT.P

 Peak Number 5 (DEL) Alkane: Cyclic11.439 Concentration Rank 19

R.T.	EstConc	Area	Relative to ISTD	R.T.
11.439	2.12 ug/L	70695	Chlorobenzene-d5	11.634

Hit#	of	5	Tentative ID	MW	MolForm	CAS#	Qual
1			Cyclohexane, 1,2,4-trimethyl-, (...	126	C9H18	007667-60-9	97
2			Cyclohexane, 1,2,4-trimethyl-, (...	126	C9H18	007667-60-9	93
3			Cyclohexane, 1,3,5-trimethyl-, (...	126	C9H18	001795-26-2	93
4			Cyclohexane, 1,3,5-trimethyl-	126	C9H18	001839-63-0	90
5			Cyclohexane, 1,3,5-trimethyl-, (...	126	C9H18	001795-27-3	86



Data Path : Z:\voasrv\HPCHEM1\MSVOA_W\Data\VW100621\
 Data File : VW020322.D
 Acq On : 06 Oct 2021 18:59
 Operator : SY/VA
 Sample : M4001-06
 Misc : 7.09g/10mL/MSVOA_W/SOIL
 ALS Vial : 1 Sample Multiplier: 1

Instrument :
 MSVOA_W
 ClientSampled :
 EW919

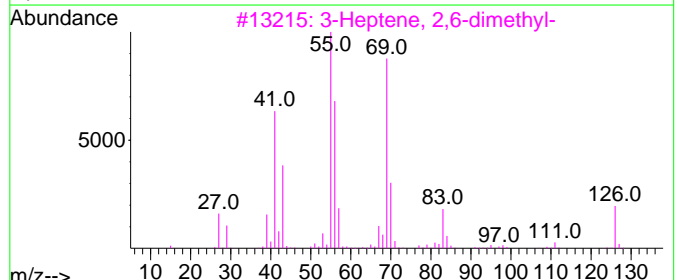
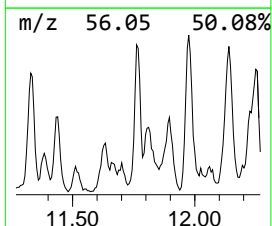
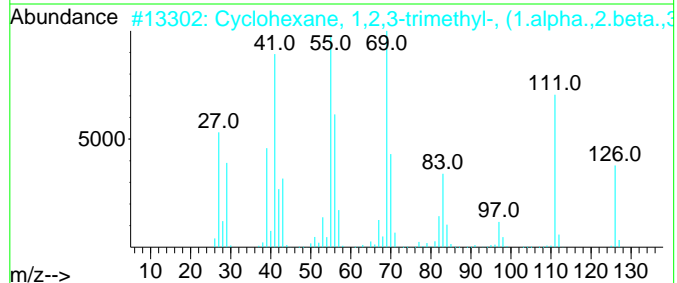
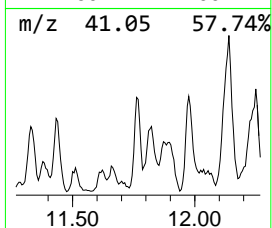
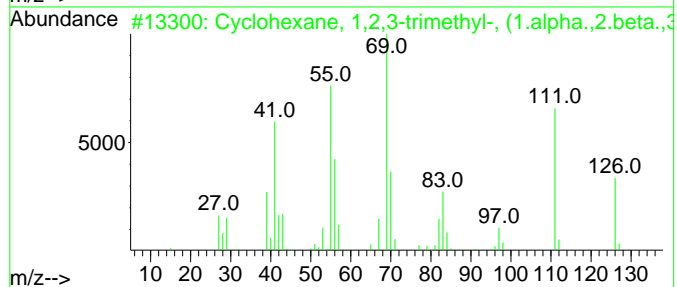
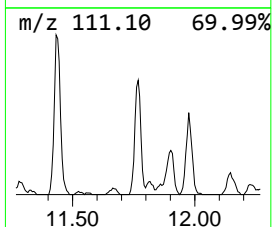
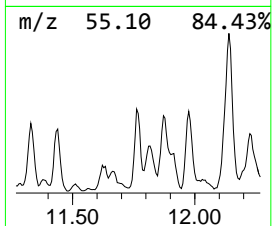
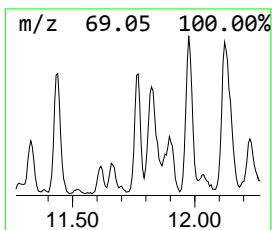
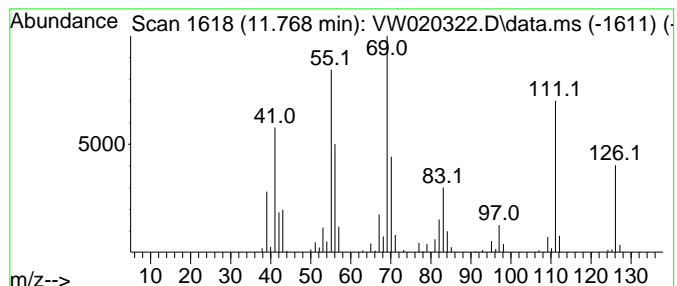
Quant Method : Z:\voasrv\HPCHEM1\MSVOA_W\Method\SFAMWLM100621SMA.M
 Quant Title : SFAM01.0

TIC Library : C:\Database\NIST0.L
 TIC Integration Parameters: LSCINT.P

 Peak Number 6 (DEL) Alkane: Cyclic11.768 Concentration Rank 16

R.T.	EstConc	Area	Relative to ISTD	R.T.
11.768	2.55 ug/L	85304	Chlorobenzene-d5	11.634

Hit#	of	5	Tentative ID	MW	MolForm	CAS#	Qual
1			Cyclohexane, 1,2,3-trimethyl-, (...	126	C9H18	001678-81-5	98
2			Cyclohexane, 1,2,3-trimethyl-, (...	126	C9H18	001678-81-5	83
3			3-Heptene, 2,6-dimethyl-	126	C9H18	002738-18-3	68
4			trans-2-Methyl-3-octene	126	C9H18	052937-36-7	58
5			3-Heptene, 2,6-dimethyl-	126	C9H18	002738-18-3	58



Data Path : Z:\voasrv\HPCHEM1\MSVOA_W\Data\VW100621\
 Data File : VW020322.D
 Acq On : 06 Oct 2021 18:59
 Operator : SY/VA
 Sample : M4001-06
 Misc : 7.09g/10mL/MSVOA_W/SOIL
 ALS Vial : 1 Sample Multiplier: 1

Instrument :
 MSVOA_W
 ClientSampled :
 EW919

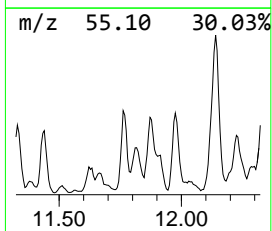
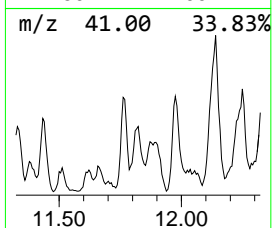
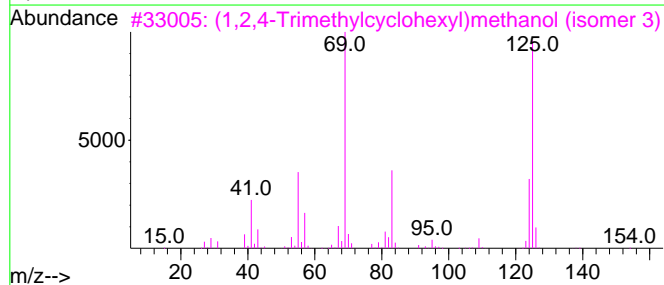
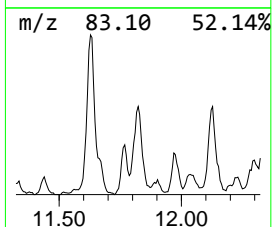
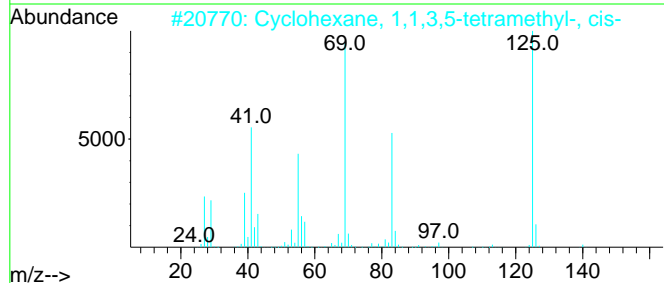
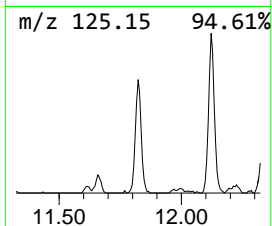
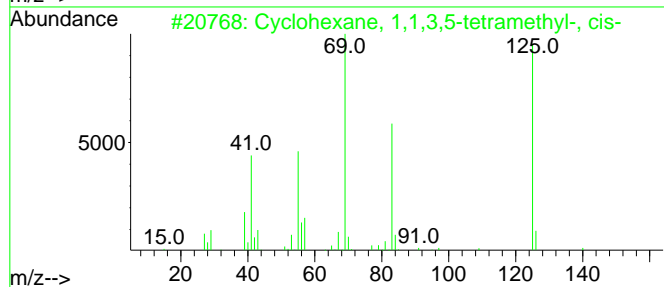
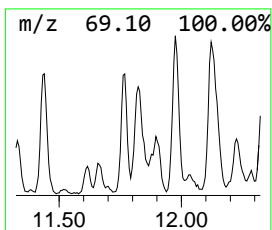
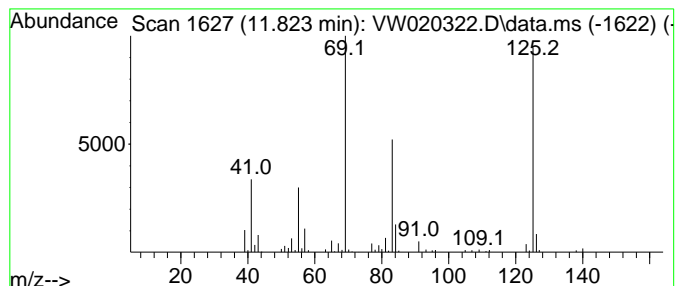
Quant Method : Z:\voasrv\HPCHEM1\MSVOA_W\Method\SFAMWLM100621SMA.M
 Quant Title : SFAM01.0

TIC Library : C:\Database\NIST20.L
 TIC Integration Parameters: LSCINT.P

 Peak Number 7 (DEL) Alkane: Cyclic11.823 Concentration Rank 20

R.T.	EstConc	Area	Relative to ISTD	R.T.
11.823	2.11 ug/L	70299	Chlorobenzene-d5	11.634

Hit#	of	5	Tentative ID	MW	MolForm	CAS#	Qual
1			Cyclohexane, 1,1,3,5-tetramethyl...	140	C10H20	050876-32-9	91
2			Cyclohexane, 1,1,3,5-tetramethyl...	140	C10H20	050876-32-9	78
3			(1,2,4-Trimethylcyclohexyl)metha...	156	C10H20O	1000499-04-0	56
4			Zinc, bis[2-(1,1-dimethylethyl)-...	314	C18H34Zn	074793-36-5	56
5			Cyclohexane, 1,1,3,5-tetramethyl...	140	C10H20	050876-31-8	45



Data Path : Z:\voasrv\HPCHEM1\MSVOA_W\Data\VW100621\
 Data File : VW020322.D
 Acq On : 06 Oct 2021 18:59
 Operator : SY/VA
 Sample : M4001-06
 Misc : 7.09g/10mL/MSVOA_W/SOIL
 ALS Vial : 1 Sample Multiplier: 1

Instrument :
 MSVOA_W
 ClientSampleID :
 EW919

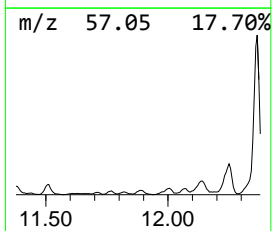
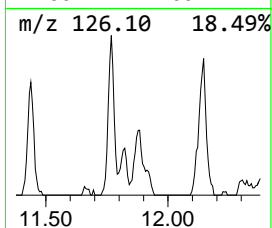
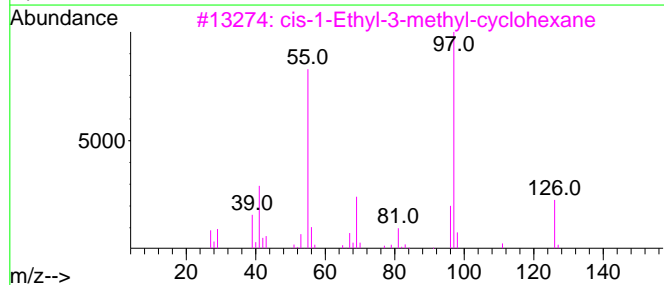
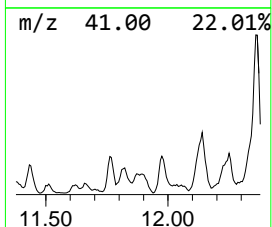
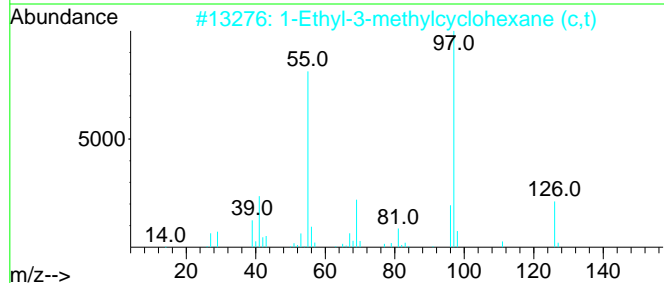
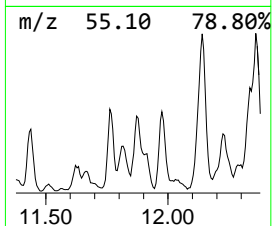
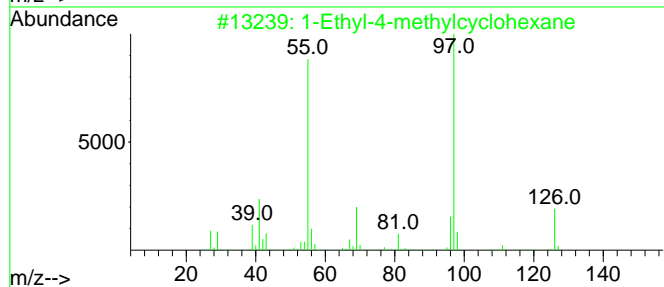
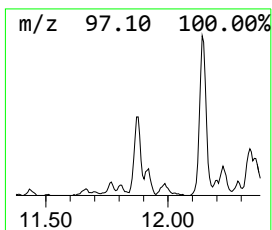
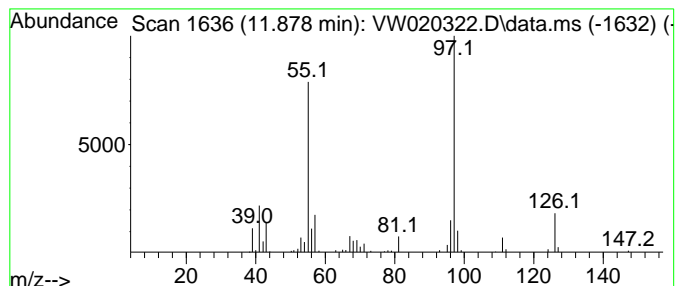
Quant Method : Z:\voasrv\HPCHEM1\MSVOA_W\Method\SFAMWLM100621SMA.M
 Quant Title : SFAM01.0

TIC Library : C:\Database\NIST20.L
 TIC Integration Parameters: LSCINT.P

 Peak Number 8 (DEL) Alkane: Cyclic11.878 Concentration Rank 15

R.T.	EstConc	Area	Relative to ISTD	R.T.
11.878	2.69 ug/L	89941	Chlorobenzene-d5	11.634

Hit#	of	5	Tentative ID	MW	MolForm	CAS#	Qual
1			1-Ethyl-4-methylcyclohexane	126	C9H18	003728-56-1	90
2			1-Ethyl-3-methylcyclohexane (c,t)	126	C9H18	003728-55-0	87
3			cis-1-Ethyl-3-methyl-cyclohexane	126	C9H18	019489-10-2	87
4			2-Hexene, 3,4,4-trimethyl-	126	C9H18	053941-19-8	80
5			Cyclohexane, 1-ethyl-4-methyl-, ...	126	C9H18	006236-88-0	72



Data Path : Z:\voasrv\HPCHEM1\MSVOA_W\Data\VW100621\
 Data File : VW020322.D
 Acq On : 06 Oct 2021 18:59
 Operator : SY/VA
 Sample : M4001-06
 Misc : 7.09g/10mL/MSVOA_W/SOIL
 ALS Vial : 1 Sample Multiplier: 1

Instrument :
 MSVOA_W
 ClientSampled :
 EW919

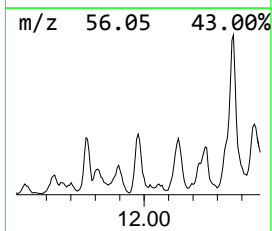
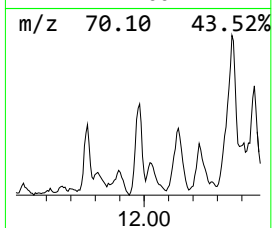
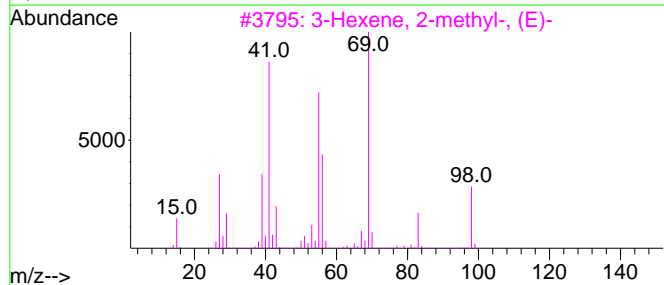
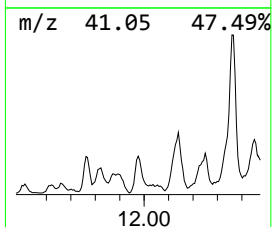
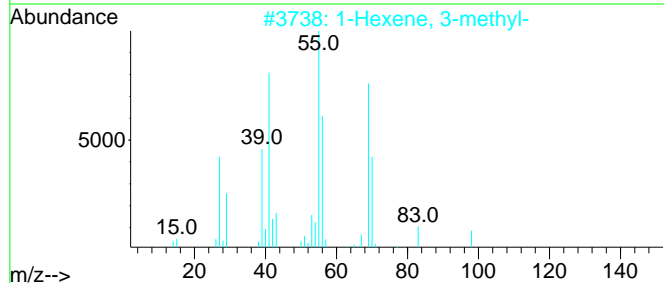
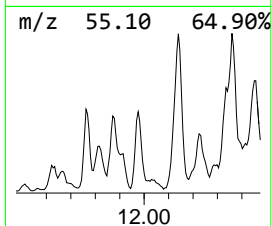
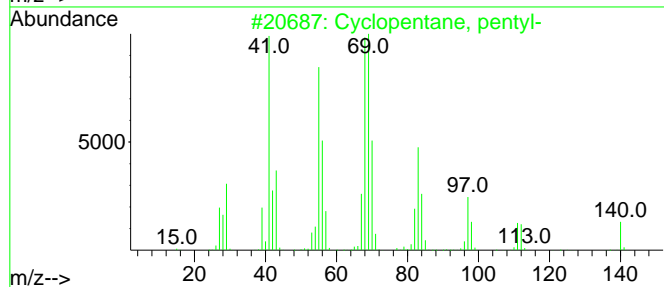
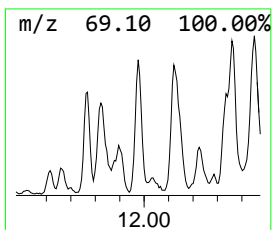
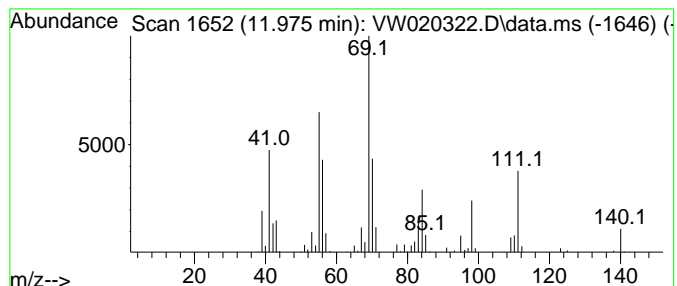
Quant Method : Z:\voasrv\HPCHEM1\MSVOA_W\Method\SFAMWLM100621SMA.M
 Quant Title : SFAM01.0

TIC Library : C:\Database\NIST20.L
 TIC Integration Parameters: LSCINT.P

 Peak Number 9 (DEL) Alkane: Cyclic11.975 Concentration Rank 11

R.T.	EstConc	Area	Relative to ISTD	R.T.
11.975	3.33 ug/L	111150	Chlorobenzene-d5	11.634

Hit#	of	Tentative ID	MW	MolForm	CAS#	Qual
1	5	Cyclopentane, pentyl-	140	C10H20	003741-00-2	80
2		1-Hexene, 3-methyl-	98	C7H14	003404-61-3	62
3		3-Hexene, 2-methyl-, (E)-	98	C7H14	000692-24-0	60
4		3-Hexene, 2-methyl-, (Z)-	98	C7H14	015840-60-5	53
5		2-Octene, 2,6-dimethyl-	140	C10H20	004057-42-5	53



Data Path : Z:\voasrv\HPCHEM1\MSVOA_W\Data\VW100621\
 Data File : VW020322.D
 Acq On : 06 Oct 2021 18:59
 Operator : SY/VA
 Sample : M4001-06
 Misc : 7.09g/10mL/MSVOA_W/SOIL
 ALS Vial : 1 Sample Multiplier: 1

Instrument :
 MSVOA_W
 ClientSampled :
 EW919

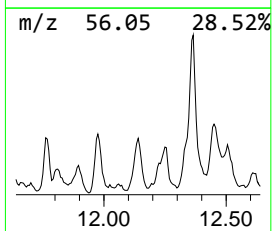
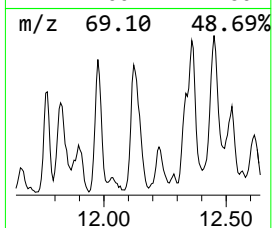
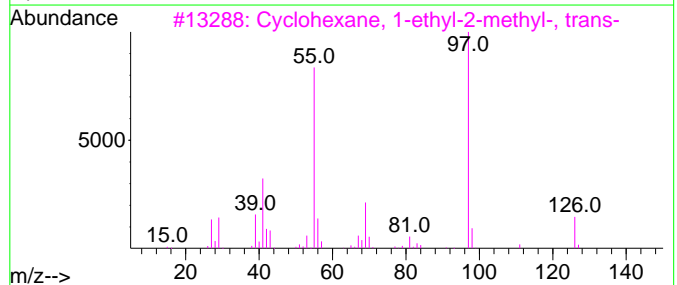
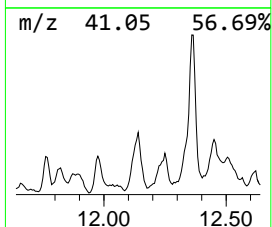
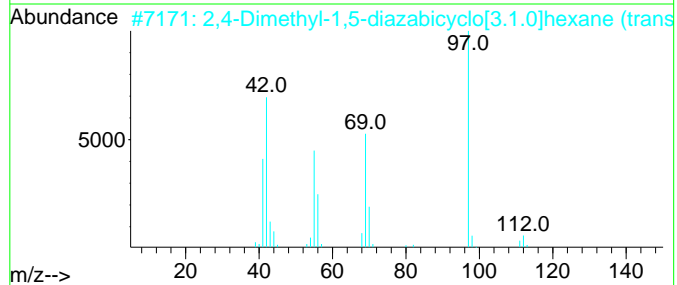
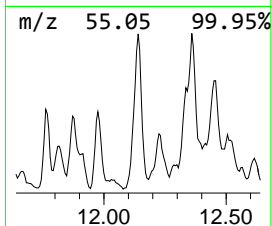
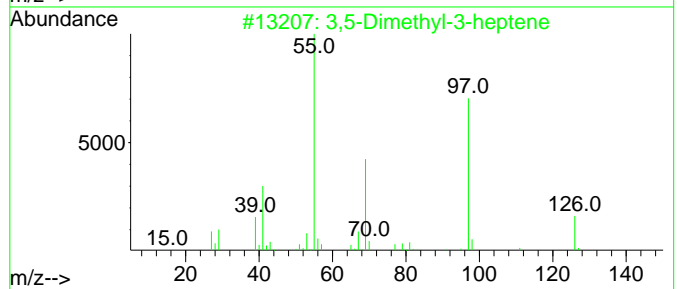
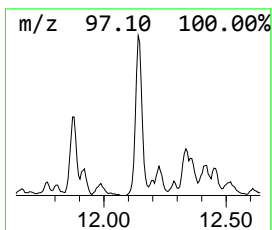
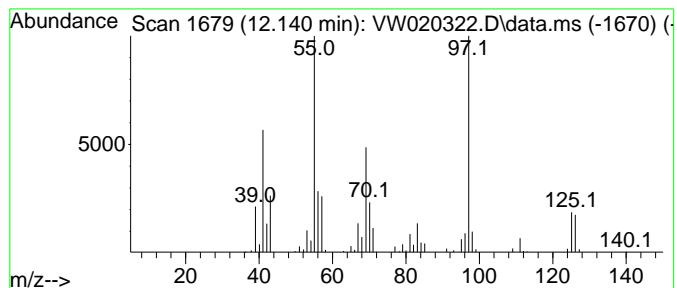
Quant Method : Z:\voasrv\HPCHEM1\MSVOA_W\Method\SFAMWLM100621SMA.M
 Quant Title : SFAM01.0

TIC Library : C:\Database\NIST20.L
 TIC Integration Parameters: LSCINT.P

 Peak Number 10 (DEL) Alkane: Straight-Chai... Concentration Rank 8

R.T.	EstConc	Area	Relative to ISTD	R.T.
12.140	5.68 ug/L	189712	Chlorobenzene-d5	11.634

Hit#	of 5	Tentative ID	MW	MolForm	CAS#	Qual
1		3,5-Dimethyl-3-heptene	126	C9H18	059643-68-4	70
2		2,4-Dimethyl-1,5-diazabicyclo[3.1.0]hexane (trans)	112	C6H12N2	1000283-20-9	59
3		Cyclohexane, 1-ethyl-2-methyl-, trans-	126	C9H18	004923-78-8	58
4		Cyclohexane, 1-ethyl-4-methyl-, trans-	126	C9H18	004926-78-7	58
5		2-Hexene, 3,4,4-trimethyl-	126	C9H18	053941-19-8	58



Data Path : Z:\voasrv\HPCHEM1\MSVOA_W\Data\VW100621\
 Data File : VW020322.D
 Acq On : 06 Oct 2021 18:59
 Operator : SY/VA
 Sample : M4001-06
 Misc : 7.09g/10mL/MSVOA_W/SOIL
 ALS Vial : 1 Sample Multiplier: 1

Instrument :
 MSVOA_W
 ClientSampleId :
 EW919

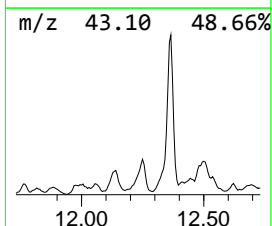
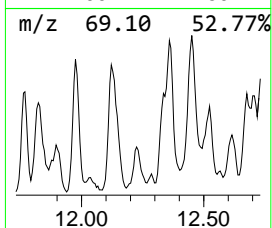
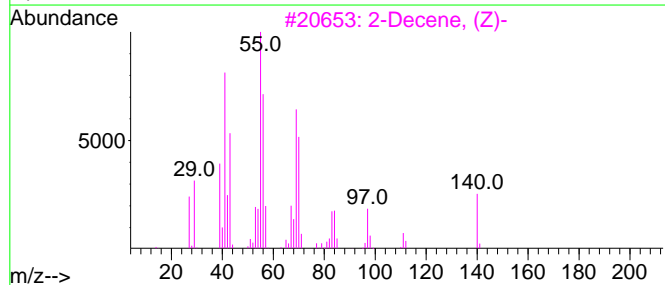
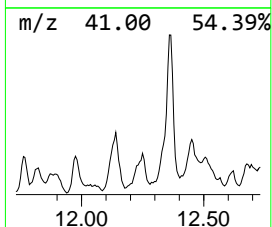
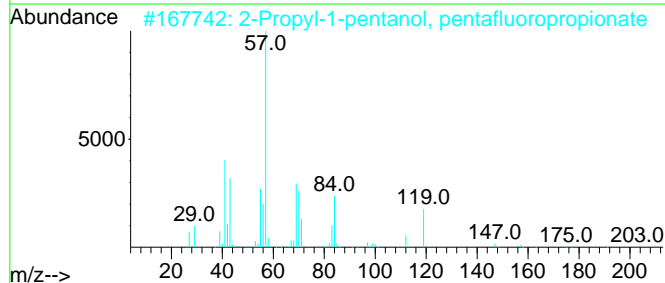
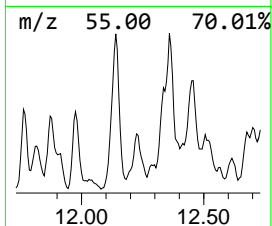
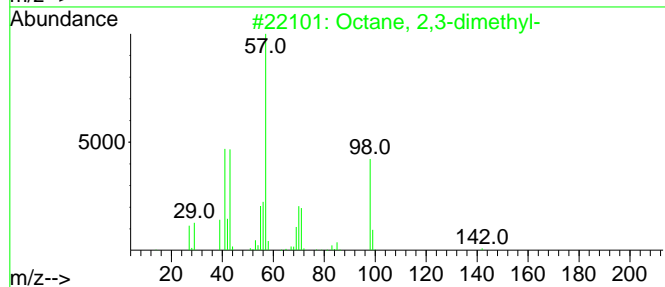
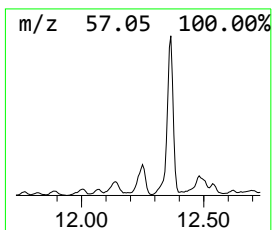
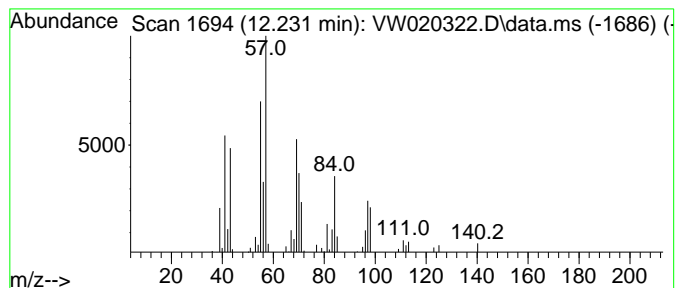
Quant Method : Z:\voasrv\HPCHEM1\MSVOA_W\Method\SFAMWLM100621SMA.M
 Quant Title : SFAM01.0

TIC Library : C:\Database\NIST20.L
 TIC Integration Parameters: LSCINT.P

 Peak Number 11 (DEL) Alkane: Straight-Chai... Concentration Rank 24

R.T.	EstConc	Area	Relative to ISTD	R.T.
12.231	1.65 ug/L	55142	Chlorobenzene-d5	11.634

Hit#	of 5	Tentative ID	MW	MolForm	CAS#	Qual
1		Octane, 2,3-dimethyl-	142	C10H22	007146-60-3	47
2		2-Propyl-1-pentanol, pentafluoro...	276	C11H17F5O2	1000365-51-2	43
3		2-Decene, (Z)-	140	C10H20	020348-51-0	30
4		Cyclopropane, 1,1,2,3-tetramethyl-	98	C7H14	074752-93-5	30
5		Cyclononane	140	C9H16O	003350-30-9	27



Data Path : Z:\voasrv\HPCHEM1\MSVOA_W\Data\VW100621\
 Data File : VW020322.D
 Acq On : 06 Oct 2021 18:59
 Operator : SY/VA
 Sample : M4001-06
 Misc : 7.09g/10mL/MSVOA_W/SOIL
 ALS Vial : 1 Sample Multiplier: 1

Instrument :
 MSVOA_W
 ClientSampleID :
 EW919

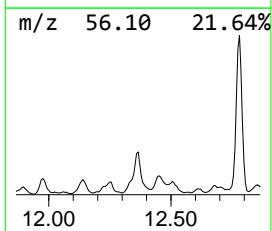
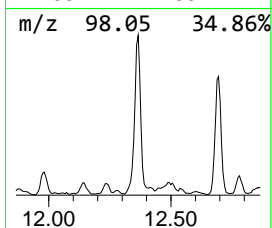
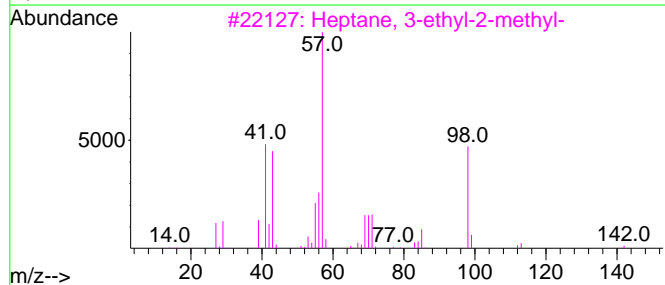
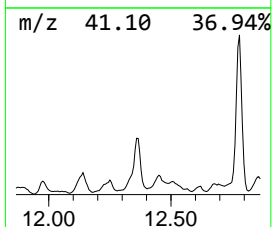
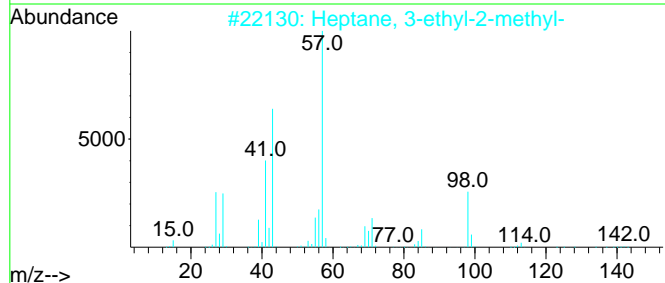
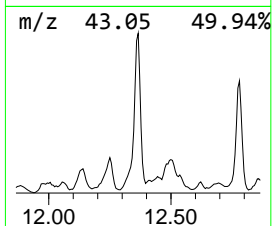
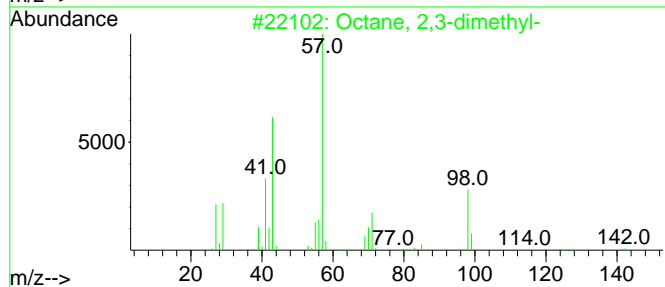
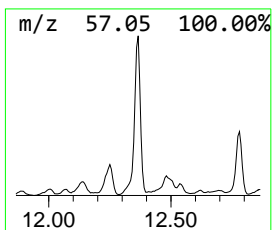
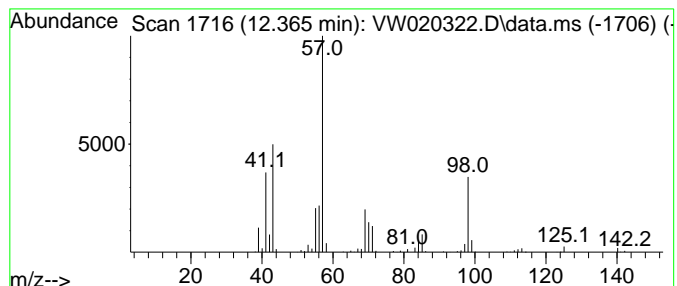
Quant Method : Z:\voasrv\HPCHEM1\MSVOA_W\Method\SFAMWLM100621SMA.M
 Quant Title : SFAM01.0

TIC Library : C:\Database\NIST20.L
 TIC Integration Parameters: LSCINT.P

 Peak Number 12 (DEL) Alkane: Straight-Chai... Concentration Rank 4

R.T.	EstConc	Area	Relative to ISTD	R.T.
12.366	11.69 ug/L	390340	Chlorobenzene-d5	11.634

Hit#	of 5	Tentative ID	MW	MolForm	CAS#	Qual
1		Octane, 2,3-dimethyl-	142	C10H22	007146-60-3	64
2		Heptane, 3-ethyl-2-methyl-	142	C10H22	014676-29-0	64
3		Heptane, 3-ethyl-2-methyl-	142	C10H22	014676-29-0	58
4		Octane, 2,5,6-trimethyl-	156	C11H24	062016-14-2	53
5		Carbonic acid, heptyl vinyl ester	186	C10H18O3	1010383-25-4	53



Data Path : Z:\voasrv\HPCHEM1\MSVOA_W\Data\VW100621\
 Data File : VW020322.D
 Acq On : 06 Oct 2021 18:59
 Operator : SY/VA
 Sample : M4001-06
 Misc : 7.09g/10mL/MSVOA_W/SOIL
 ALS Vial : 1 Sample Multiplier: 1

Instrument :
 MSVOA_W
 ClientSampled :
 EW919

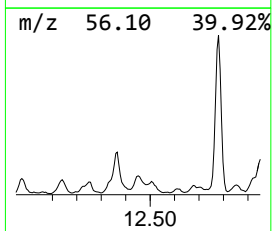
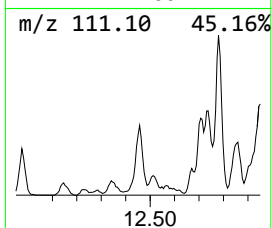
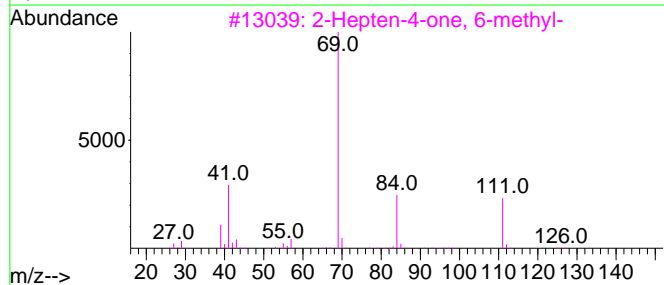
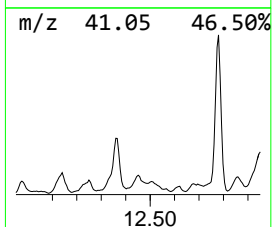
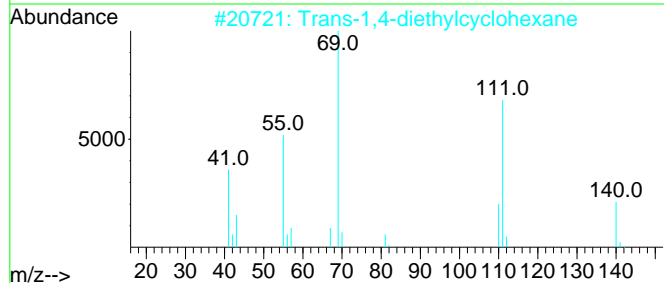
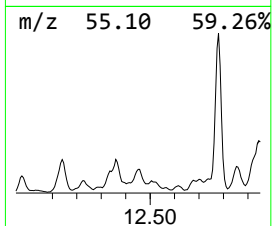
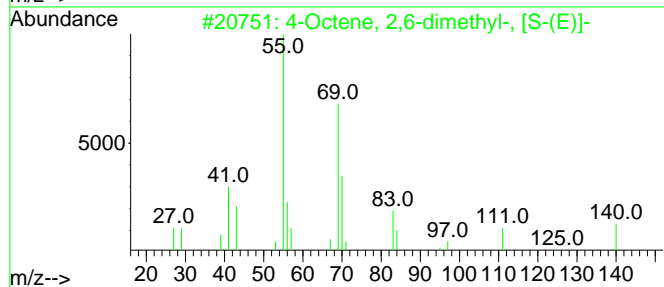
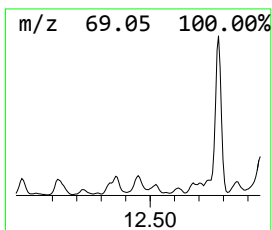
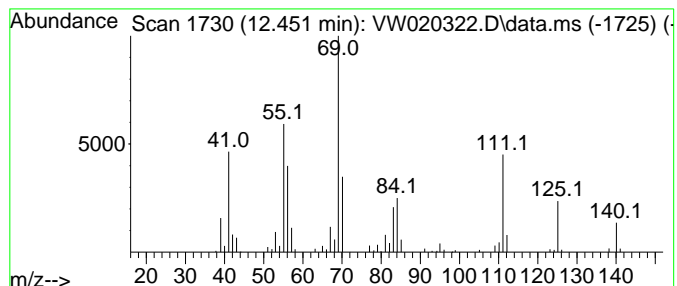
Quant Method : Z:\voasrv\HPCHEM1\MSVOA_W\Method\SFAMWLM100621SMA.M
 Quant Title : SFAM01.0

TIC Library : C:\Database\NIST20.L
 TIC Integration Parameters: LSCINT.P

 Peak Number 13 (DEL) Alkane: Straight-Chai... Concentration Rank 14

R.T.	EstConc	Area	Relative to ISTD	R.T.
12.451	2.95 ug/L	98558	Chlorobenzene-d5	11.634

Hit#	of 5	Tentative ID	MW	MolForm	CAS#	Qual
1		4-Octene, 2,6-dimethyl-, [S-(E)]-	140	C10H20	062960-76-3	52
2		Trans-1,4-diethylcyclohexane	140	C10H20	013990-93-7	46
3		2-Hepten-4-one, 6-methyl-	126	C8H14O	049852-35-9	43
4		2,3,4-Trimethyl-hex-3-enal	140	C9H16O	1000193-72-9	43
5		Cyclohexane, 1,2,4-trimethyl-, (...)	126	C9H18	007667-60-9	43



Data Path : Z:\voasrv\HPCHEM1\MSVOA_W\Data\VW100621\
 Data File : VW020322.D
 Acq On : 06 Oct 2021 18:59
 Operator : SY/VA
 Sample : M4001-06
 Misc : 7.09g/10mL/MSVOA_W/SOIL
 ALS Vial : 1 Sample Multiplier: 1

Instrument :
 MSVOA_W
 ClientSampled :
 EW919

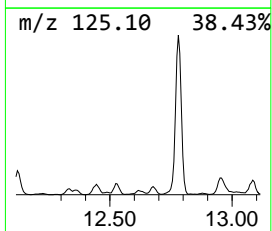
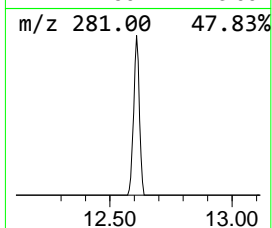
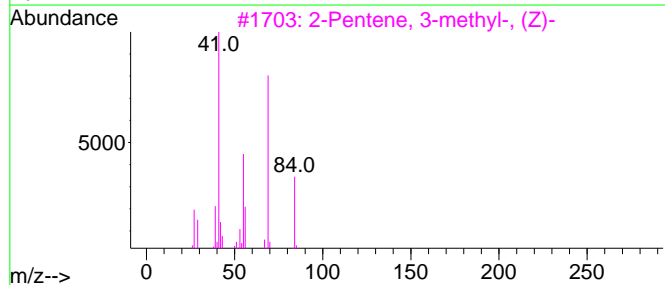
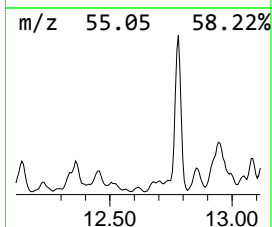
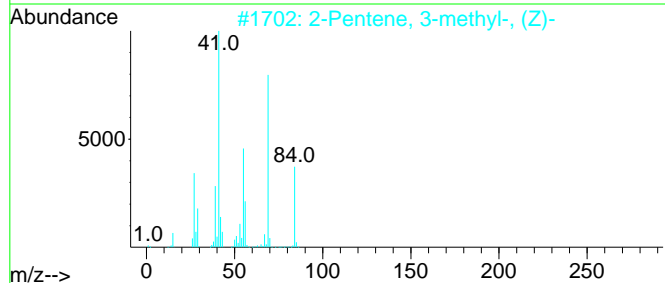
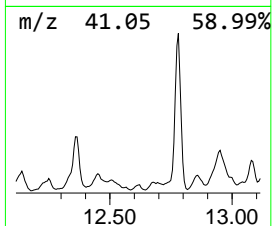
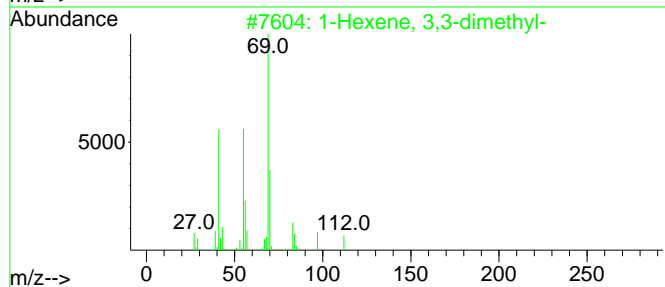
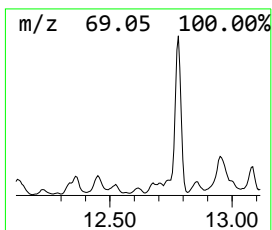
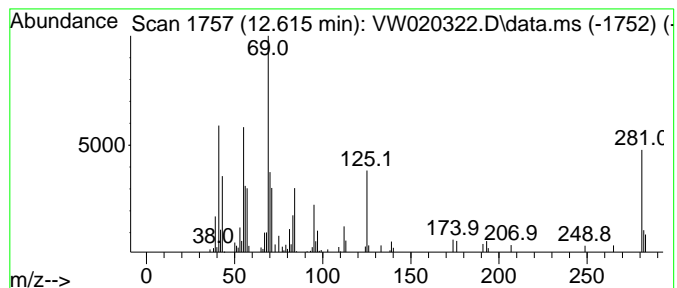
Quant Method : Z:\voasrv\HPCHEM1\MSVOA_W\Method\SFAMWLM100621SMA.M
 Quant Title : SFAM01.0

TIC Library : C:\Database\NIST20.L
 TIC Integration Parameters: LSCINT.P

 Peak Number 14 (DEL) Alkane: Straight-Chai... Concentration Rank 25

R.T.	EstConc	Area	Relative to ISTD	R.T.
12.615	1.65 ug/L	41705	1,4-Dichlorobenzene-d4	13.554

Hit#	of	5	Tentative ID	MW	MolForm	CAS#	Qual
1			1-Hexene, 3,3-dimethyl-	112	C8H16	003404-77-1	42
2			2-Pentene, 3-methyl-, (Z)-	84	C6H12	000922-62-3	42
3			2-Pentene, 3-methyl-, (Z)-	84	C6H12	000922-62-3	38
4			Cyclopropane, 1,2-dimethyl-1-pen...	140	C10H20	062238-04-4	38
5			2-Pentene, 3-methyl-	84	C6H12	000922-61-2	30



Data Path : Z:\voasrv\HPCHEM1\MSVOA_W\Data\VW100621\
 Data File : VW020322.D
 Acq On : 06 Oct 2021 18:59
 Operator : SY/VA
 Sample : M4001-06
 Misc : 7.09g/10mL/MSVOA_W/SOIL
 ALS Vial : 1 Sample Multiplier: 1

Instrument :
 MSVOA_W
 ClientSampleID :
 EW919

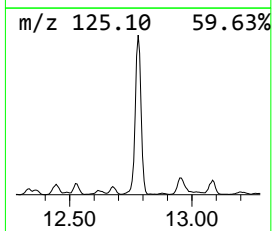
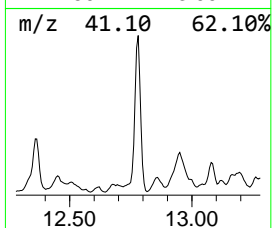
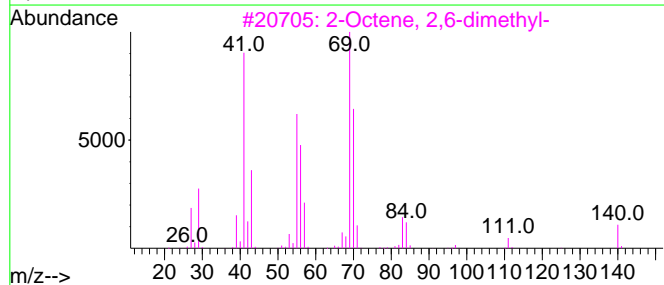
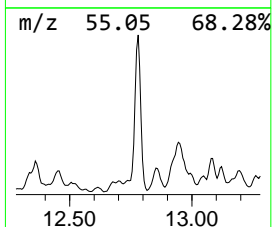
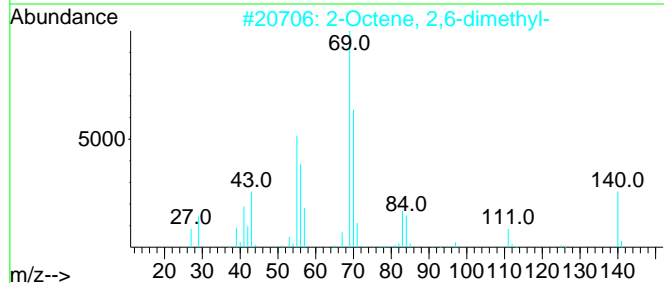
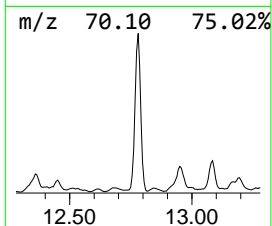
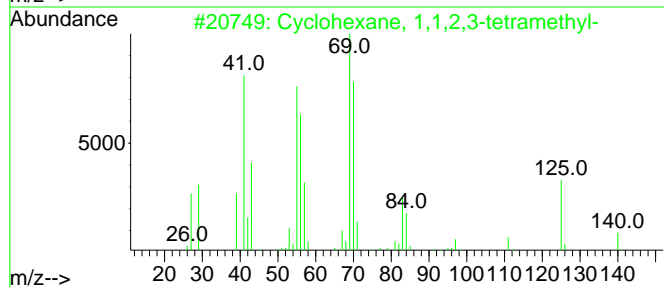
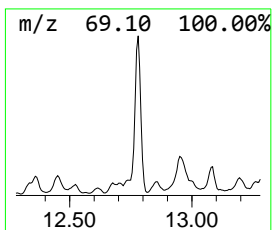
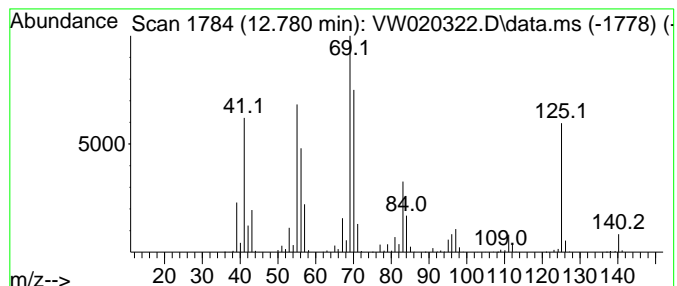
Quant Method : Z:\voasrv\HPCHEM1\MSVOA_W\Method\SFAMWLM100621SMA.M
 Quant Title : SFAM01.0

TIC Library : C:\Database\NIST20.L
 TIC Integration Parameters: LSCINT.P

 Peak Number 15 (DEL) Alkane: Cyclic12.780 Concentration Rank 1

R.T.	EstConc	Area	Relative to ISTD	R.T.
12.780	37.71 ug/L	953015	1,4-Dichlorobenzene-d4	13.554

Hit#	of 5	Tentative ID	MW	MolForm	CAS#	Qual
1		Cyclohexane, 1,1,2,3-tetramethyl-	140	C10H20	006783-92-2	93
2		2-Octene, 2,6-dimethyl-	140	C10H20	004057-42-5	76
3		2-Octene, 2,6-dimethyl-	140	C10H20	004057-42-5	76
4		4-Octene, 2,6-dimethyl-, [S-(E)]-	140	C10H20	062960-76-3	68
5		2-Octene, 2,6-dimethyl-	140	C10H20	004057-42-5	64



Data Path : Z:\voasrv\HPCHEM1\MSVOA_W\Data\VW100621\
 Data File : VW020322.D
 Acq On : 06 Oct 2021 18:59
 Operator : SY/VA
 Sample : M4001-06
 Misc : 7.09g/10mL/MSVOA_W/SOIL
 ALS Vial : 1 Sample Multiplier: 1

Instrument :
 MSVOA_W
 ClientSampleID :
 EW919

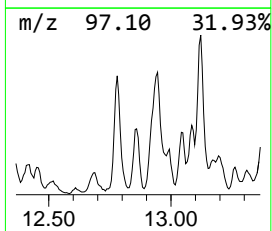
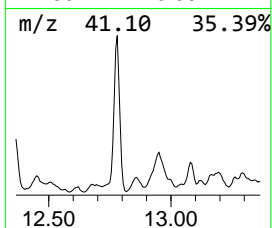
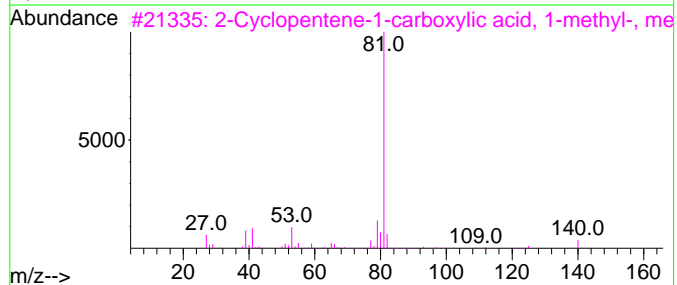
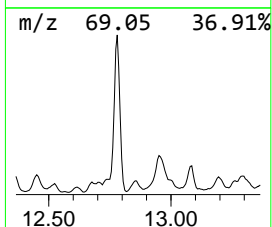
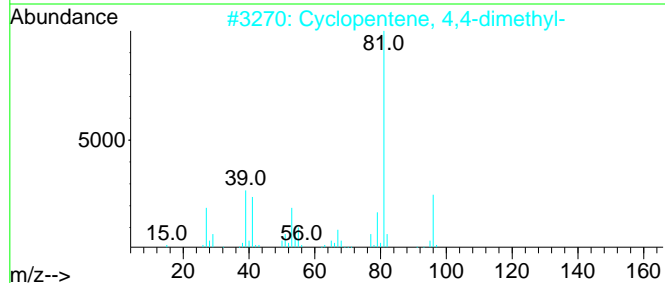
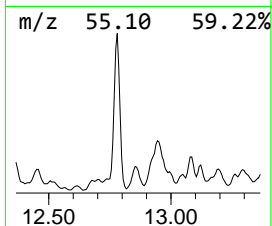
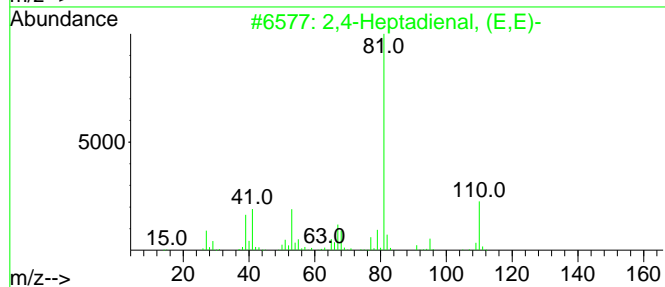
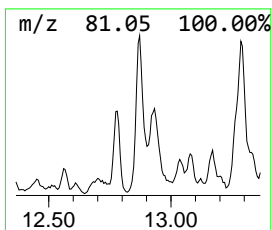
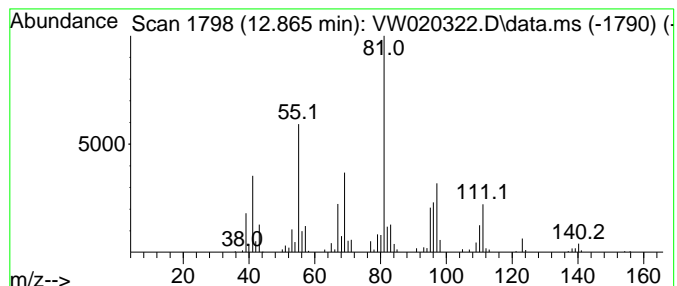
Quant Method : Z:\voasrv\HPCHEM1\MSVOA_W\Method\SFAMWLM100621SMA.M
 Quant Title : SFAM01.0

TIC Library : C:\Database\NIST20.L
 TIC Integration Parameters: LSCINT.P

 Peak Number 16 unknown-02 Concentration Rank 7

R.T.	EstConc	Area	Relative to ISTD	R.T.
12.865	6.39 ug/L	161450	1,4-Dichlorobenzene-d4	13.554

Hit#	of 5	Tentative ID	MW	MolForm	CAS#	Qual
1		2,4-Heptadienal, (E,E)-	110	C7H10O	004313-03-5	43
2		Cyclopentene, 4,4-dimethyl-	96	C7H12	019037-72-0	38
3		2-Cyclopentene-1-carboxylic acid...	140	C8H12O2	068317-73-7	30
4		Cyclohexaneethanol, .beta.,4-dim...	156	C10H20O	005113-95-1	14
5		Cyclohexene, 1-pentyl-	152	C11H20	015232-85-6	14



Data Path : Z:\voasrv\HPCHEM1\MSVOA_W\Data\VW100621\
 Data File : VW020322.D
 Acq On : 06 Oct 2021 18:59
 Operator : SY/VA
 Sample : M4001-06
 Misc : 7.09g/10mL/MSVOA_W/SOIL
 ALS Vial : 1 Sample Multiplier: 1

Instrument :
 MSVOA_W
 ClientSampled :
 EW919

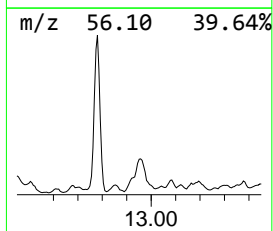
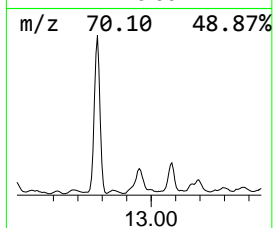
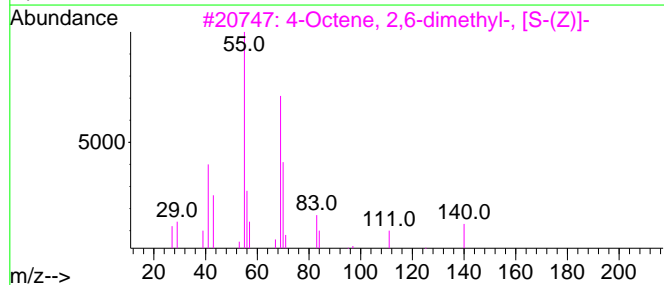
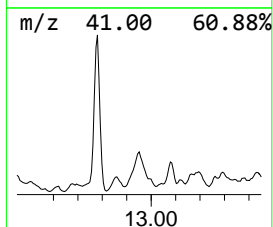
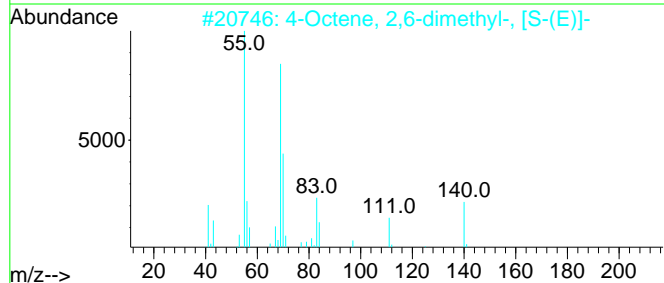
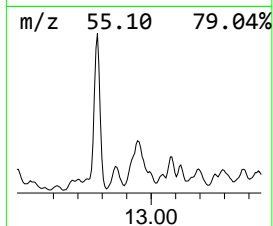
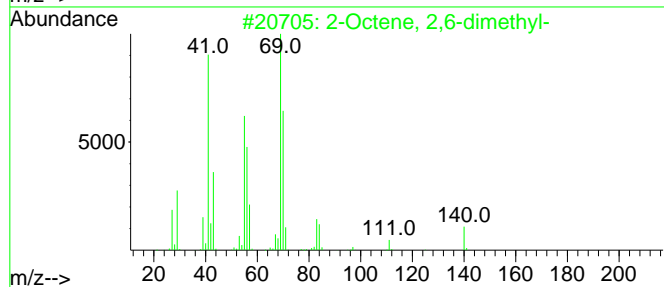
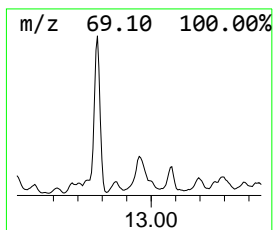
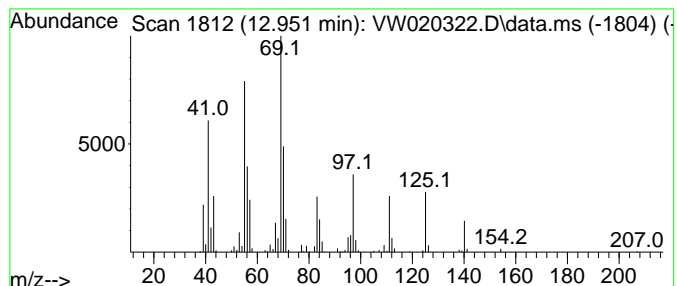
Quant Method : Z:\voasrv\HPCHEM1\MSVOA_W\Method\SFAMWLM100621SMA.M
 Quant Title : SFAM01.0

TIC Library : C:\Database\NIST0.L
 TIC Integration Parameters: LSCINT.P

 Peak Number 17 (DEL) Alkane: Straight-Chai... Concentration Rank 2

R.T.	EstConc	Area	Relative to ISTD	R.T.
12.951	16.99 ug/L	429443	1,4-Dichlorobenzene-d4	13.554

Hit#	of 5	Tentative ID	MW	MolForm	CAS#	Qual
1		2-Octene, 2,6-dimethyl-	140	C10H20	004057-42-5	70
2		4-Octene, 2,6-dimethyl-, [S-(E)]-	140	C10H20	062960-76-3	64
3		4-Octene, 2,6-dimethyl-, [S-(Z)]-	140	C10H20	062960-77-4	64
4		3-Octene, 4-ethyl-	140	C10H20	053966-51-1	52
5		1-Hexene, 3,3-dimethyl-	112	C8H16	003404-77-1	52



Data Path : Z:\voasrv\HPCHEM1\MSVOA_W\Data\VW100621\
 Data File : VW020322.D
 Acq On : 06 Oct 2021 18:59
 Operator : SY/VA
 Sample : M4001-06
 Misc : 7.09g/10mL/MSVOA_W/SOIL
 ALS Vial : 1 Sample Multiplier: 1

Instrument :
 MSVOA_W
 ClientSampled :
 EW919

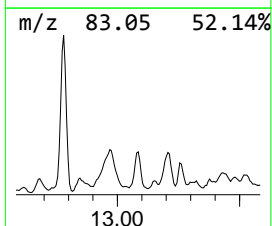
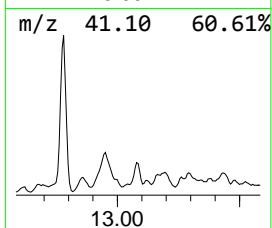
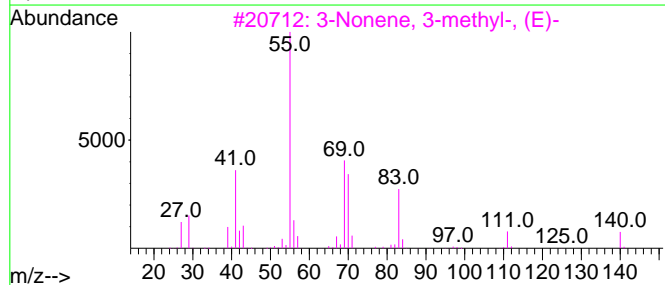
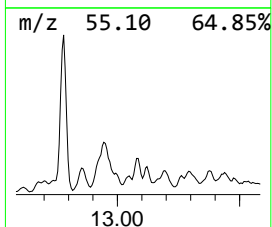
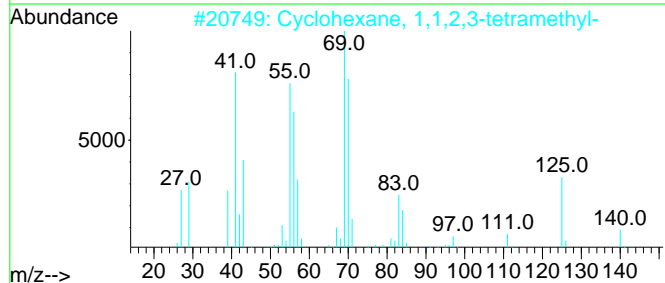
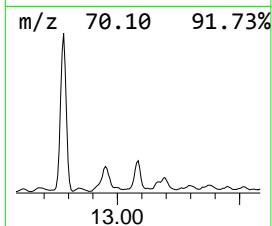
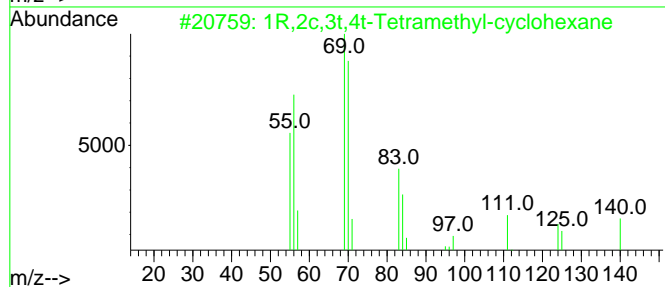
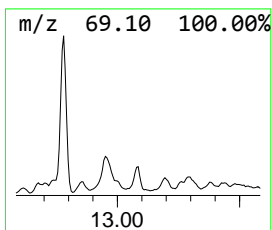
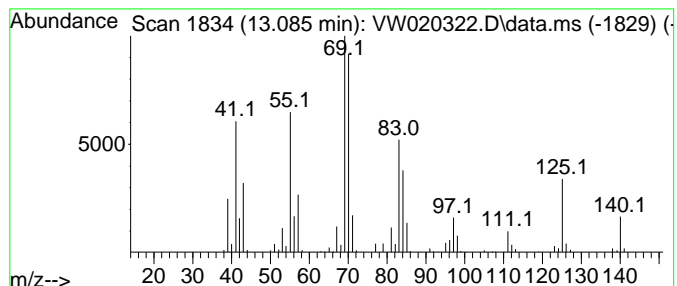
Quant Method : Z:\voasrv\HPCHEM1\MSVOA_W\Method\SFAMWLM100621SMA.M
 Quant Title : SFAM01.0

TIC Library : C:\Database\NIST20.L
 TIC Integration Parameters: LSCINT.P

 Peak Number 18 (DEL) Alkane: Cyclic13.085 Concentration Rank 10

R.T.	EstConc	Area	Relative to ISTD	R.T.
13.085	4.82 ug/L	121783	1,4-Dichlorobenzene-d4	13.554

Hit#	of 5	Tentative ID	MW	MolForm	CAS#	Qual
1		1R,2c,3t,4t-Tetramethyl-cyclohexane	140	C10H20	1000144-07-3	90
2		Cyclohexane, 1,1,2,3-tetramethyl-	140	C10H20	006783-92-2	87
3		3-Nonene, 3-methyl-, (E)-	140	C10H20	069405-42-1	64
4		2,3-Dimethyl-3-heptene, (Z)-	126	C9H18	059643-73-1	49
5		3-Octene, 4-ethyl-	140	C10H20	053966-51-1	46



Data Path : Z:\voasrv\HPCHEM1\MSVOA_W\Data\VW100621\
 Data File : VW020322.D
 Acq On : 06 Oct 2021 18:59
 Operator : SY/VA
 Sample : M4001-06
 Misc : 7.09g/10mL/MSVOA_W/SOIL
 ALS Vial : 1 Sample Multiplier: 1

Instrument :
 MSVOA_W
 ClientSampled :
 EW919

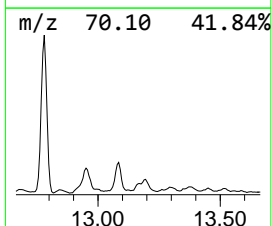
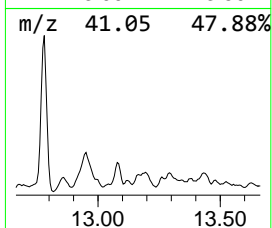
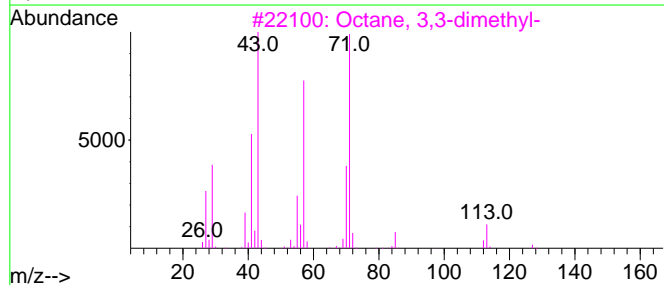
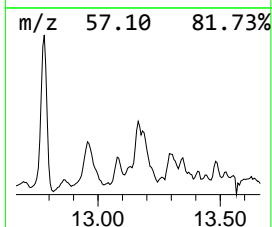
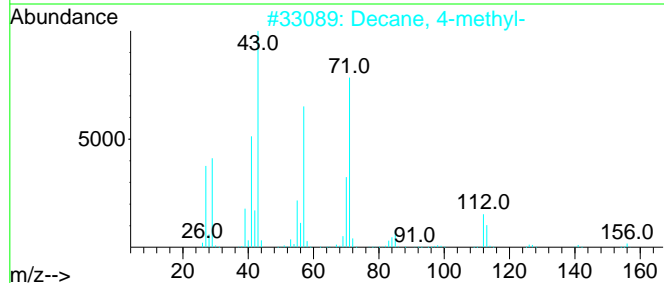
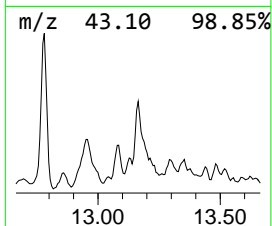
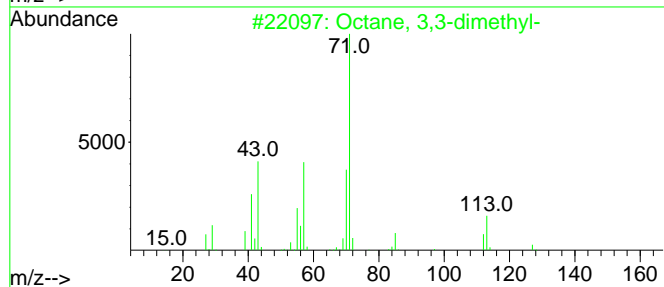
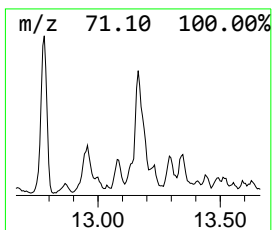
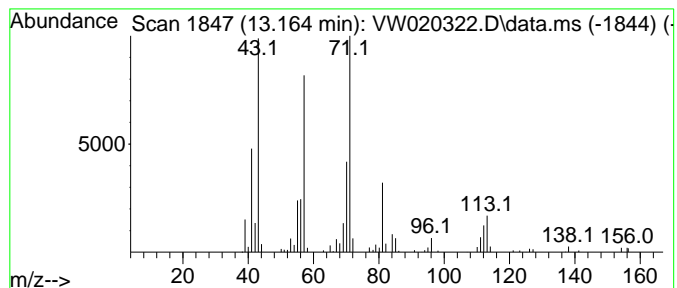
Quant Method : Z:\voasrv\HPCHEM1\MSVOA_W\Method\SFAMWLM100621SMA.M
 Quant Title : SFAM01.0

TIC Library : C:\Database\NIST0.L
 TIC Integration Parameters: LSCINT.P

 Peak Number 19 (DEL) Alkane: Straight-Chai... Concentration Rank 21

R.T.	EstConc	Area	Relative to ISTD	R.T.
13.164	1.95 ug/L	49299	1,4-Dichlorobenzene-d4	13.554

Hit#	of 5	Tentative ID	MW	MolForm	CAS#	Qual
1		Octane, 3,3-dimethyl-	142	C10H22	004110-44-5	78
2		Decane, 4-methyl-	156	C11H24	002847-72-5	72
3		Octane, 3,3-dimethyl-	142	C10H22	004110-44-5	64
4		Isobutyl pentyl carbonate	188	C10H20O3	178442-32-5	64
5		Heptane, 3,3,5-trimethyl-	142	C10H22	007154-80-5	64



Data Path : Z:\voasrv\HPCHEM1\MSVOA_W\Data\VW100621\
 Data File : VW020322.D
 Acq On : 06 Oct 2021 18:59
 Operator : SY/VA
 Sample : M4001-06
 Misc : 7.09g/10mL/MSVOA_W/SOIL
 ALS Vial : 1 Sample Multiplier: 1

Instrument :
 MSVOA_W
 ClientSampleId :
 EW919

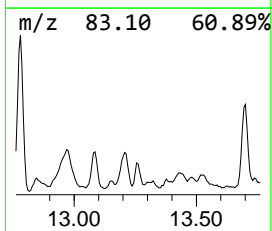
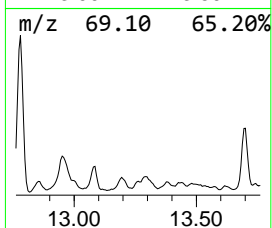
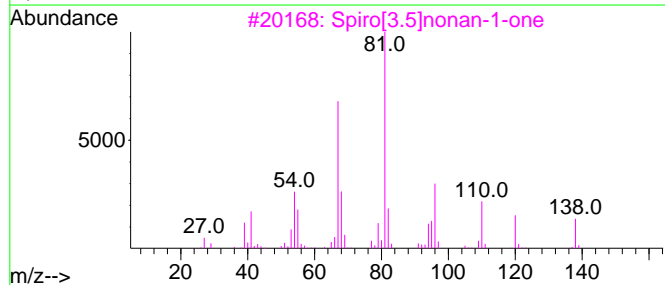
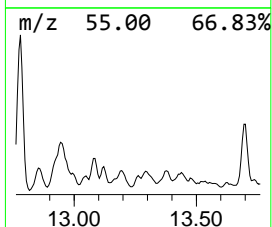
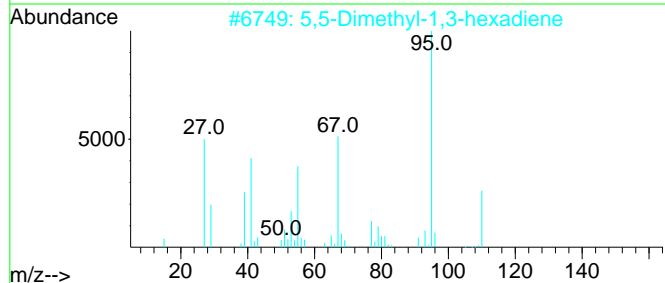
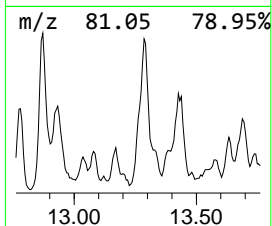
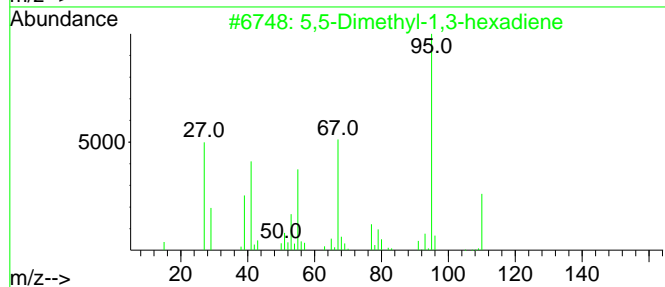
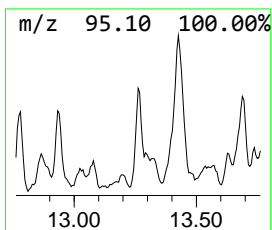
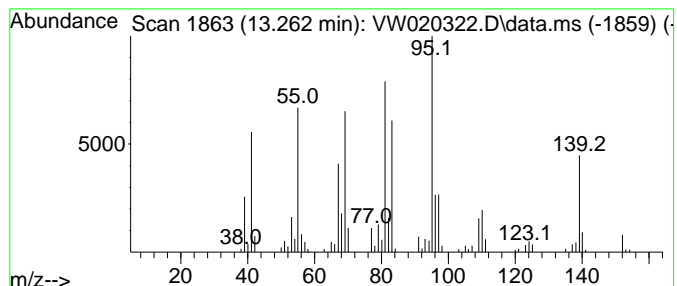
Quant Method : Z:\voasrv\HPCHEM1\MSVOA_W\Method\SFAMWLM100621SMA.M
 Quant Title : SFAM01.0

TIC Library : C:\Database\NIST20.L
 TIC Integration Parameters: LSCINT.P

 Peak Number 20 unknown-03 Concentration Rank 13

R.T.	EstConc	Area	Relative to ISTD	R.T.
13.262	3.02 ug/L	76206	1,4-Dichlorobenzene-d4	13.554

Hit#	of 5	Tentative ID	MW	MolForm	CAS#	Qual
1		5,5-Dimethyl-1,3-hexadiene	110	C8H14	001515-79-3	42
2		5,5-Dimethyl-1,3-hexadiene	110	C8H14	001515-79-3	42
3		Spiro[3.5]nonan-1-one	138	C9H14O	029800-45-1	41
4		Cyclohexene, 4-methyl-	96	C7H12	000591-47-9	38
5		.alpha.-Santoline alcohol	154	C10H18O	090823-36-2	38



Data Path : Z:\voasrv\HPCHEM1\MSVOA_W\Data\VW100621\
 Data File : VW020322.D
 Acq On : 06 Oct 2021 18:59
 Operator : SY/VA
 Sample : M4001-06
 Misc : 7.09g/10mL/MSVOA_W/SOIL
 ALS Vial : 1 Sample Multiplier: 1

Instrument :
 MSVOA_W
 ClientSampled :
 EW919

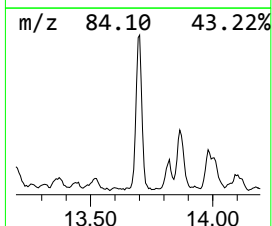
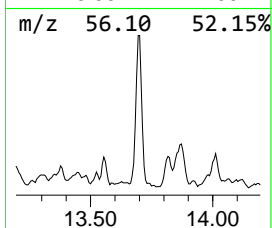
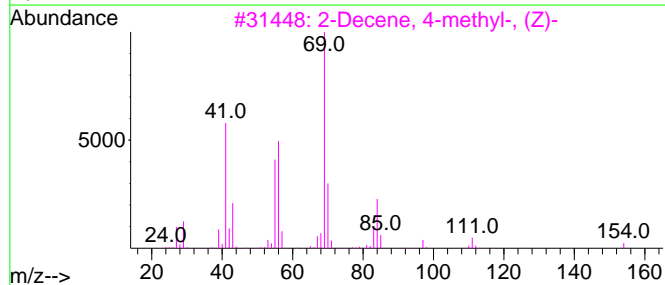
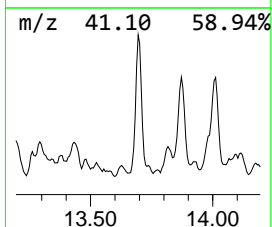
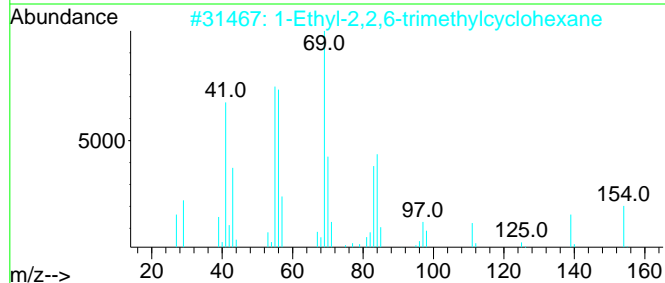
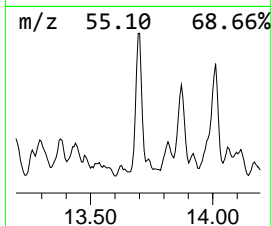
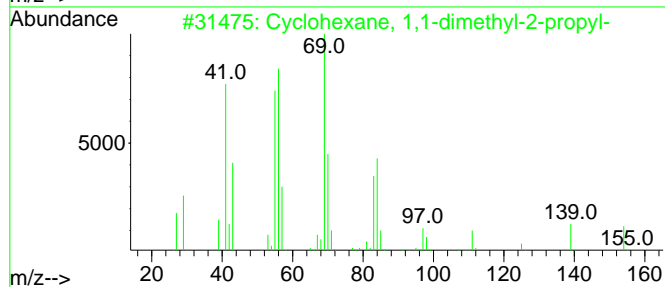
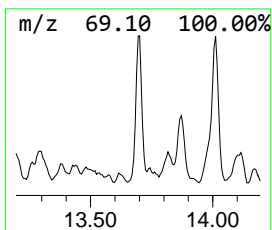
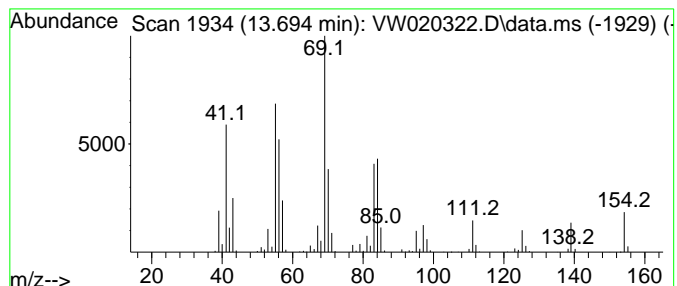
Quant Method : Z:\voasrv\HPCHEM1\MSVOA_W\Method\SFAMWLM100621SMA.M
 Quant Title : SFAM01.0

TIC Library : C:\Database\NIST0.L
 TIC Integration Parameters: LSCINT.P

 Peak Number 21 (DEL) Alkane: Cyclic13.695 Concentration Rank 3

R.T.	EstConc	Area	Relative to ISTD	R.T.
13.695	14.32 ug/L	361908	1,4-Dichlorobenzene-d4	13.554

Hit#	of 5	Tentative ID	MW	MolForm	CAS#	Qual
1		Cyclohexane, 1,1-dimethyl-2-propyl-	154	C11H22	081983-71-3	95
2		1-Ethyl-2,2,6-trimethylcyclohexane	154	C11H22	071186-27-1	93
3		2-Decene, 4-methyl-, (Z)-	154	C11H22	074630-30-1	81
4		Cyclopropane, 1-butyl-1-methyl-2...	154	C11H22	041977-34-8	58
5		4-Decene, 5-methyl-, (E)-	154	C11H22	062338-51-6	50



Data Path : Z:\voasrv\HPCHEM1\MSVOA_W\Data\VW100621\
 Data File : VW020322.D
 Acq On : 06 Oct 2021 18:59
 Operator : SY/VA
 Sample : M4001-06
 Misc : 7.09g/10mL/MSVOA_W/SOIL
 ALS Vial : 1 Sample Multiplier: 1

Instrument :
 MSVOA_W
 ClientSampleID :
 EW919

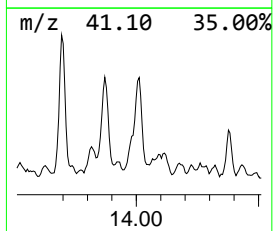
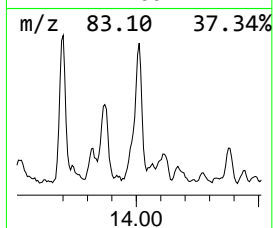
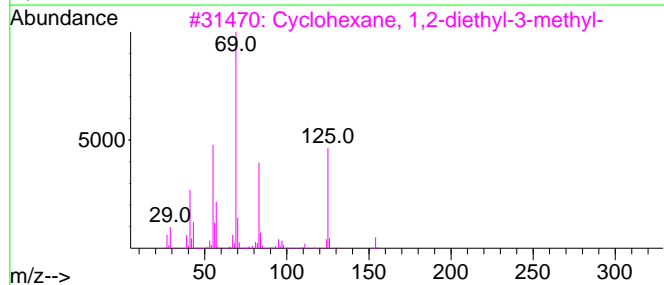
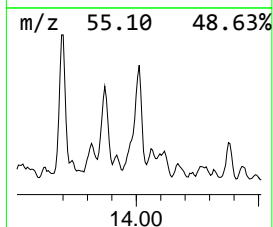
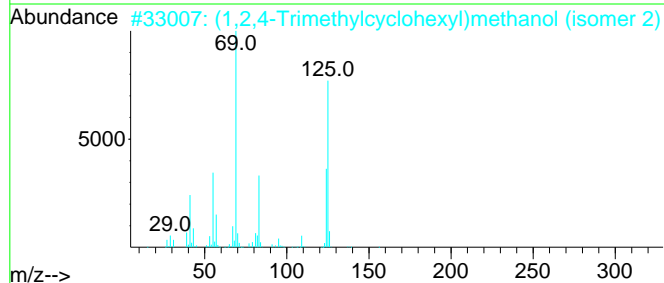
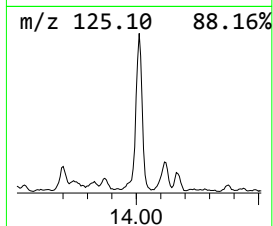
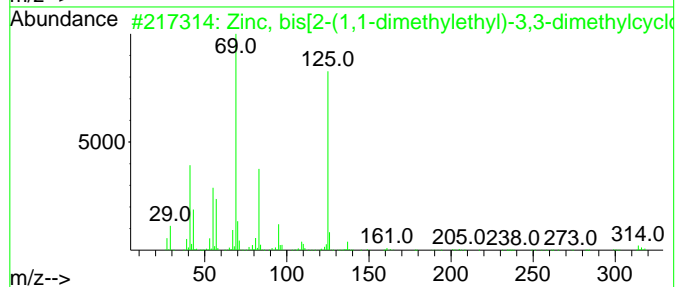
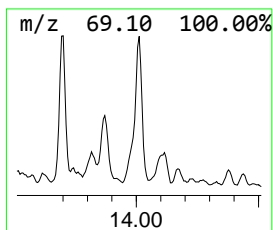
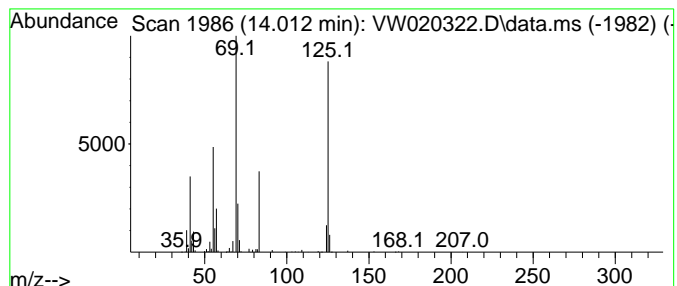
Quant Method : Z:\voasrv\HPCHEM1\MSVOA_W\Method\SFAMWLM100621SMA.M
 Quant Title : SFAM01.0

TIC Library : C:\Database\NIST20.L
 TIC Integration Parameters: LSCINT.P

 Peak Number 22 Zinc, bis[2-(1,1-dimethylet... Concentration Rank 6

R.T.	EstConc	Area	Relative to ISTD	R.T.
14.012	9.95 ug/L	251566	1,4-Dichlorobenzene-d4	13.554

Hit#	of	Tentative ID	MW	MolForm	CAS#	Qual
1	5	Zinc, bis[2-(1,1-dimethylethyl)-...]	314	C18H34Zn	074793-36-5	72
2		(1,2,4-Trimethylcyclohexyl)metha...	156	C10H200	1000499-03-9	64
3		Cyclohexane, 1,2-diethyl-3-methyl-	154	C11H22	061141-80-8	64
4		Cyclohexane, 2,4-diethyl-1-methyl-	154	C11H22	061142-70-9	50
5		Cyclohexane, 1,1,3,5-tetramethyl...	140	C10H20	050876-31-8	50



Data Path : Z:\voasrv\HPCHEM1\MSVOA_W\Data\VW100621\
 Data File : VW020322.D
 Acq On : 06 Oct 2021 18:59
 Operator : SY/VA
 Sample : M4001-06
 Misc : 7.09g/10mL/MSVOA_W/SOIL
 ALS Vial : 1 Sample Multiplier: 1

Instrument :
 MSVOA_W
 ClientSampleId :
 EW919

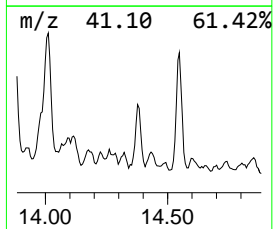
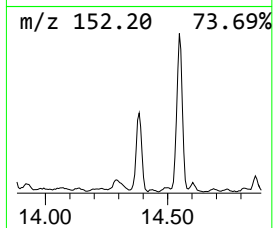
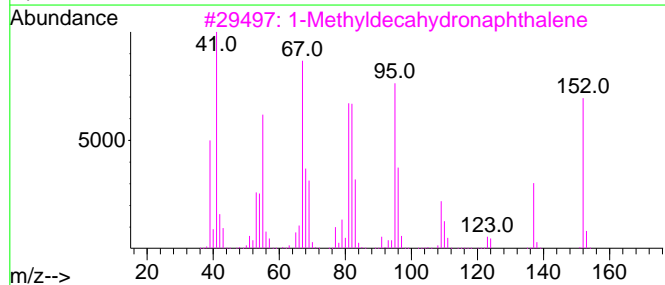
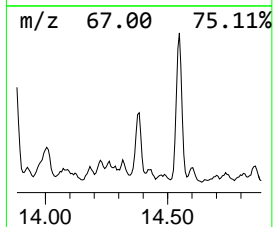
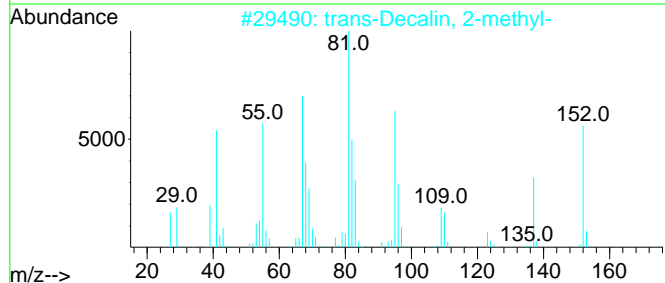
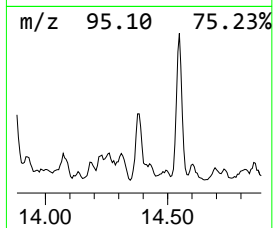
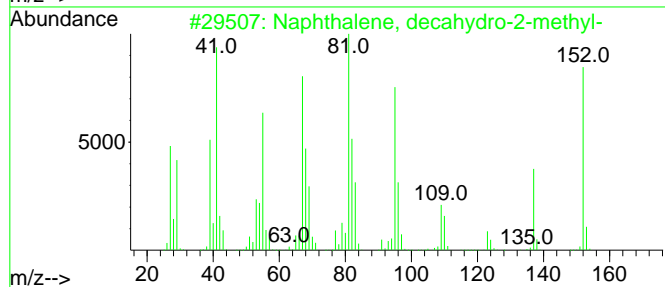
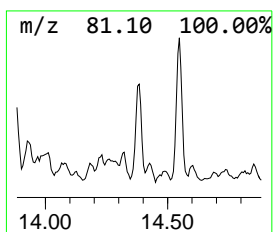
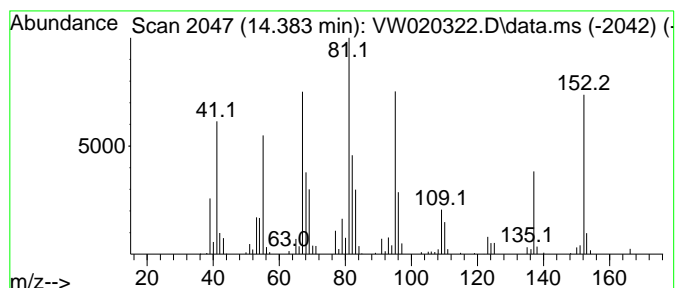
Quant Method : Z:\voasrv\HPCHEM1\MSVOA_W\Method\SFAMWLM100621SMA.M
 Quant Title : SFAM01.0

TIC Library : C:\Database\NIST20.L
 TIC Integration Parameters: LSCINT.P

 Peak Number 23 Naphthalene, decahydro-2-me... Concentration Rank 9

R.T.	EstConc	Area	Relative to ISTD	R.T.
14.383	5.29 ug/L	133635	1,4-Dichlorobenzene-d4	13.554

Hit#	of	5	Tentative ID	MW	MolForm	CAS#	Qual
1			Naphthalene, decahydro-2-methyl-	152	C11H20	002958-76-1	99
2			trans-Decalin, 2-methyl-	152	C11H20	1000152-47-3	95
3			1-Methyldecahydronaphthalene	152	C11H20	002958-75-0	89
4			Naphthalene, decahydro-2-methyl-	152	C11H20	002958-76-1	89
5			Bicyclo[2.2.1]heptan-2-one, 1,7,...	152	C10H16O	000464-48-2	76



Data Path : Z:\voasrv\HPCHEM1\MSVOA_W\Data\VW100621\
 Data File : VW020322.D
 Acq On : 06 Oct 2021 18:59
 Operator : SY/VA
 Sample : M4001-06
 Misc : 7.09g/10mL/MSVOA_W/SOIL
 ALS Vial : 1 Sample Multiplier: 1

Instrument :
 MSVOA_W
 ClientSampleID :
 EW919

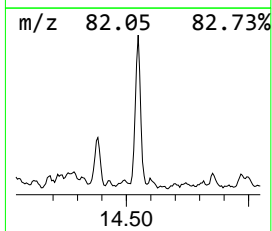
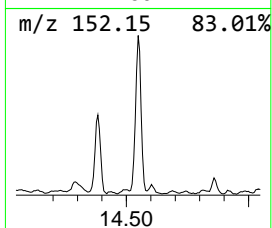
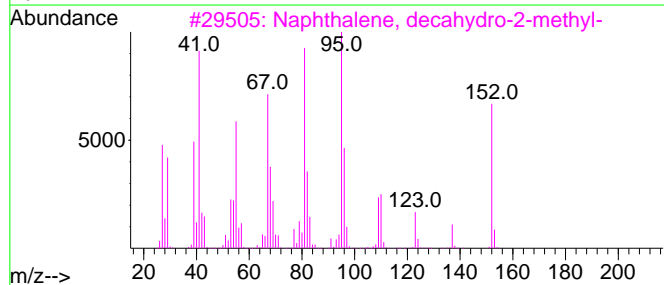
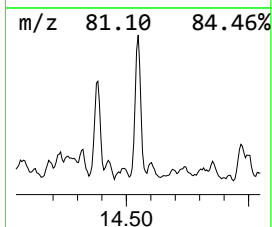
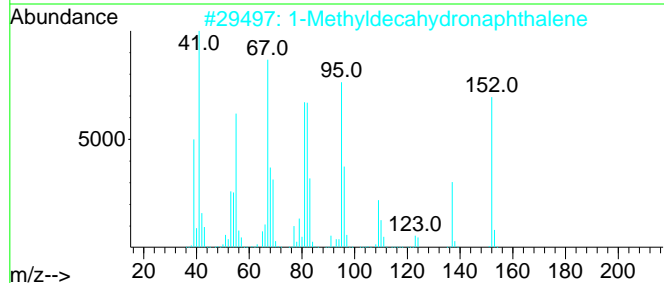
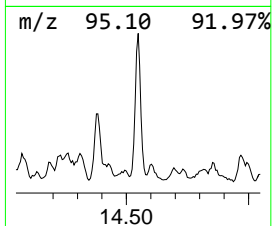
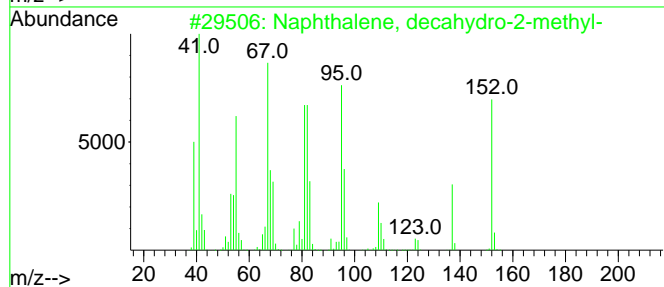
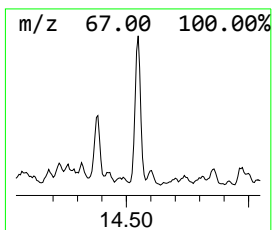
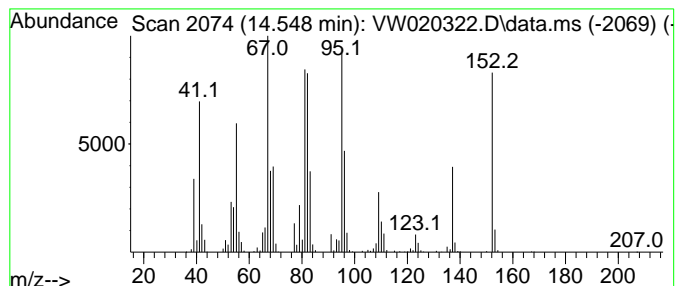
Quant Method : Z:\voasrv\HPCHEM1\MSVOA_W\Method\SFAMWLM100621SMA.M
 Quant Title : SFAM01.0

TIC Library : C:\Database\NIST20.L
 TIC Integration Parameters: LSCINT.P

 Peak Number 24 1-Methyldecahydronaphthalene Concentration Rank 5

R.T.	EstConc	Area	Relative to ISTD	R.T.
14.548	11.22 ug/L	283693	1,4-Dichlorobenzene-d4	13.554

Hit#	of 5	Tentative ID	MW	MolForm	CAS#	Qual
1		Naphthalene, decahydro-2-methyl-	152	C11H20	002958-76-1	98
2		1-Methyldecahydronaphthalene	152	C11H20	002958-75-0	98
3		Naphthalene, decahydro-2-methyl-	152	C11H20	002958-76-1	86
4		Naphthalene, decahydro-2-methyl-	152	C11H20	002958-76-1	70
5		trans-Decalin, 2-methyl-	152	C11H20	1000152-47-3	70



Data Path : Z:\voasrv\HPCHEM1\MSVOA_W\Data\VW100621\
 Data File : VW020322.D
 Acq On : 06 Oct 2021 18:59
 Operator : SY/VA
 Sample : M4001-06
 Misc : 7.09g/10mL/MSVOA_W/SOIL
 ALS Vial : 1 Sample Multiplier: 1

Instrument :
 MSVOA_W
 ClientSampleId :
 EW919

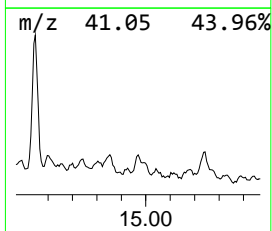
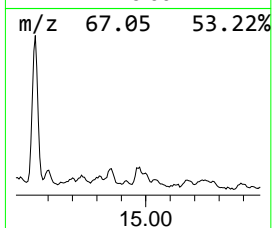
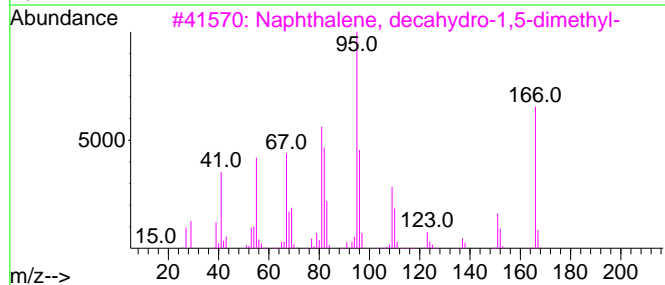
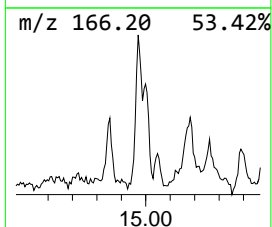
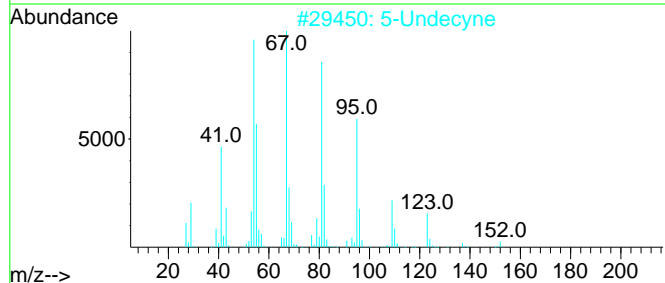
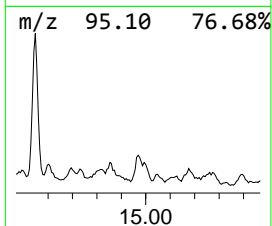
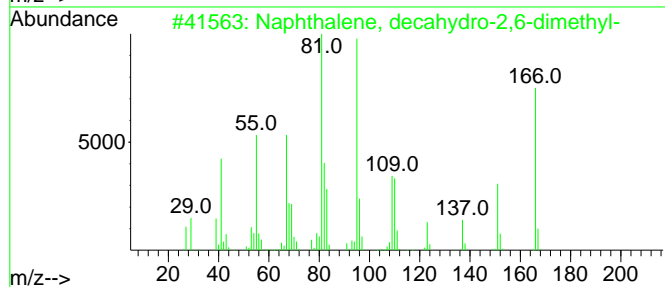
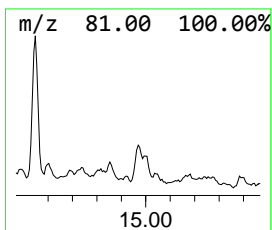
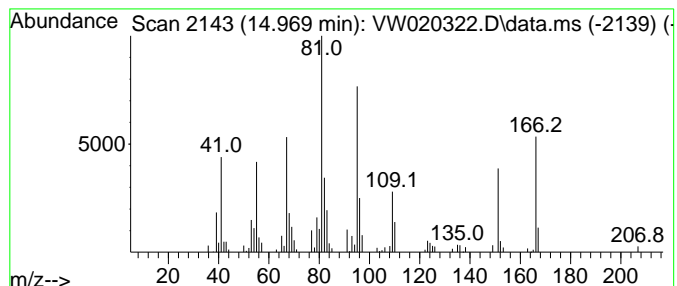
Quant Method : Z:\voasrv\HPCHEM1\MSVOA_W\Method\SFAMWLM100621SMA.M
 Quant Title : SFAM01.0

TIC Library : C:\Database\NIST0.L
 TIC Integration Parameters: LSCINT.P

 Peak Number 25 Naphthalene, decahydro-2,6-... Concentration Rank 22

R.T.	EstConc	Area	Relative to ISTD	R.T.
14.969	1.80 ug/L	45432	1,4-Dichlorobenzene-d4	13.554

Hit#	of	5	Tentative ID	MW	MolForm	CAS#	Qual
1			Naphthalene, decahydro-2,6-dimet...	166	C12H22	001618-22-0	91
2			5-Undecyne	152	C11H20	002294-72-6	70
3			Naphthalene, decahydro-1,5-dimet...	166	C12H22	066552-62-3	64
4			2(1H)-Naphthalenone, octahydro-8...	166	C11H18O	001197-95-1	53
5			1-Methyl-2-methylenecyclohexane	110	C8H14	002808-75-5	49



Data Path : Z:\voasrv\HPCHEM1\MSVOA_W\Data\VW100621\
 Data File : VW020322.D
 Acq On : 06 Oct 2021 18:59
 Operator : SY/VA
 Sample : M4001-06
 Misc : 7.09g/10mL/MSVOA_W/SOIL
 ALS Vial : 1 Sample Multiplier: 1

Instrument :
 MSVOA_W
ClientSampleId :
 EW919

Quant Method : Z:\voasrv\HPCHEM1\MSVOA_W\Method\SFAMWLM100621SMA.M
 Quant Title : SFAM01.0

TIC Library : C:\Database\NIST0.L
 TIC Integration Parameters: LSCINT.P

TIC Top Hit name	RT	EstConc	Units	Response	--Internal Standard--			
					#	RT	Resp	Conc
unknown-01	2.812	1.8	ug/L	52955	1	8.842	748497	25.0
(DEL) Alkane: C...	11.232	3.2	ug/L	107885	2	11.634	834717	25.0
(DEL) Alkane: S...	11.329	2.2	ug/L	72157	2	11.634	834717	25.0
(DEL) Alkane: C...	11.439	2.1	ug/L	70695	2	11.634	834717	25.0
(DEL) Alkane: C...	11.768	2.5	ug/L	85304	2	11.634	834717	25.0
(DEL) Alkane: C...	11.823	2.1	ug/L	70299	2	11.634	834717	25.0
(DEL) Alkane: C...	11.878	2.7	ug/L	89941	2	11.634	834717	25.0
(DEL) Alkane: C...	11.975	3.3	ug/L	111150	2	11.634	834717	25.0
(DEL) Alkane: S...	12.140	5.7	ug/L	189712	2	11.634	834717	25.0
(DEL) Alkane: S...	12.231	1.6	ug/L	55142	2	11.634	834717	25.0
(DEL) Alkane: S...	12.366	11.7	ug/L	390340	2	11.634	834717	25.0
(DEL) Alkane: S...	12.451	3.0	ug/L	98558	2	11.634	834717	25.0
(DEL) Alkane: S...	12.615	1.6	ug/L	41705	3	13.554	631841	25.0
(DEL) Alkane: C...	12.780	37.7	ug/L	953015	3	13.554	631841	25.0
unknown-02	12.865	6.4	ug/L	161450	3	13.554	631841	25.0
(DEL) Alkane: S...	12.951	17.0	ug/L	429443	3	13.554	631841	25.0
(DEL) Alkane: C...	13.085	4.8	ug/L	121783	3	13.554	631841	25.0
(DEL) Alkane: S...	13.164	2.0	ug/L	49299	3	13.554	631841	25.0
unknown-03	13.262	3.0	ug/L	76206	3	13.554	631841	25.0
(DEL) Alkane: C...	13.695	14.3	ug/L	361908	3	13.554	631841	25.0
Zinc, bis[2-(1,...	14.012	9.9	ug/L	251566	3	13.554	631841	25.0
Naphthalene, de...	14.383	5.3	ug/L	133635	3	13.554	631841	25.0
1-Methyldecahyd...	14.548	11.2	ug/L	283693	3	13.554	631841	25.0
Naphthalene, de...	14.969	1.8	ug/L	45432	3	13.554	631841	25.0