

Data Path : Z:\VOASRV\HPCHEM1\MSVOA W\DATA\VW100719\  
 Data File : VW013461.D  
 Acq On : 07 Oct 2019 14:18  
 Operator : SY/VA  
 Sample : VIBLK  
 Misc : 5.00G/5ML/MSVOA W/SOIL  
 ALS Vial : 11 Sample Multiplier: 1

Instrument :  
 MSVOA\_W  
 ClientSampleId :  
 VIBLK

Quant Time: Oct 07 17:46:06 2019  
 Quant Method : Z:\VOASRV\HPCHEM1\MSVOA\_W\METHOD\82W100119S.M  
 Quant Title : SW846 8260  
 QLast Update : Wed Oct 02 11:49:57 2019  
 Response via : Initial Calibration

Internal Standards	R.T.	QIon	Response	Conc	Units	Dev(Min)
1) Pentafluorobenzene	7.95	168	341805	50.00	ug/l	0.00
34) 1,4-Difluorobenzene	8.84	114	488488	50.00	ug/l	0.00
63) Chlorobenzene-d5	11.63	117	427191	50.00	ug/l	0.00
72) 1,4-Dichlorobenzene-d4	13.55	152	216495	50.00	ug/l	0.00

System Monitoring Compounds	R.T.	QIon	Response	Conc	Units	Dev(Min)
33) 1,2-Dichloroethane-d4	8.31	65	133869	52.45	ug/l	0.00
Spiked Amount				50.000		
Recovery						= 104.90%
35) Dibromofluoromethane	7.88	113	136378	53.21	ug/l	0.00
Spiked Amount				50.000		
Recovery						= 106.42%
50) Toluene-d8	10.32	98	568448	53.44	ug/l	0.00
Spiked Amount				50.000		
Recovery						= 106.88%
62) 4-Bromofluorobenzene	12.62	95	201099	56.62	ug/l	0.00
Spiked Amount				50.000		
Recovery						= 113.24%

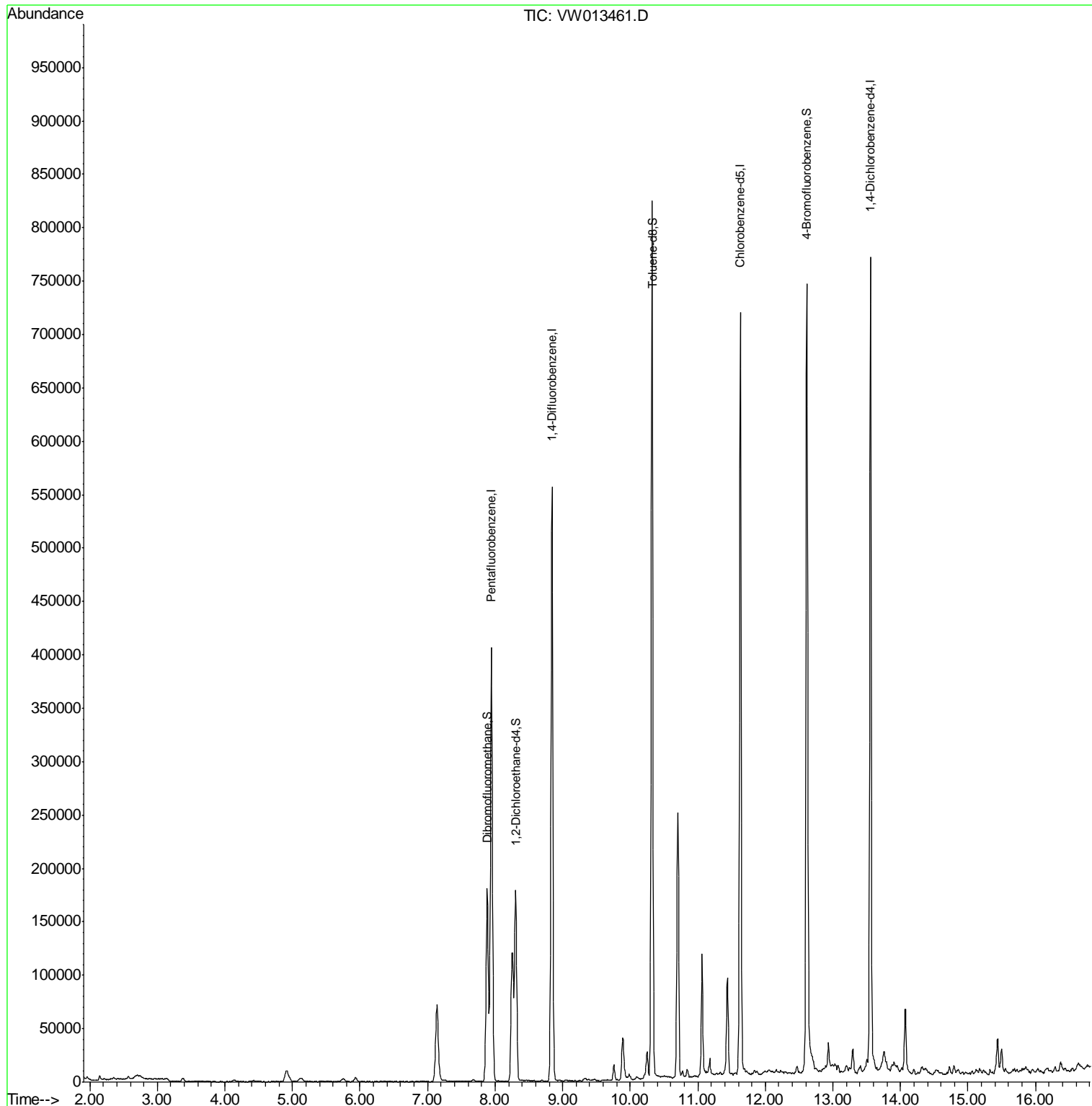
Target Compounds Qvalue  
 -----

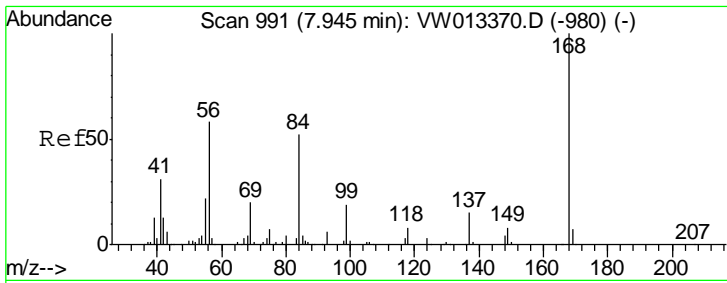
(#) = qualifier out of range (m) = manual integration (+) = signals summed

Data Path : Z:\VOASRV\HPCHEM1\MSVOA W\DATA\VW100719\  
 Data File : VW013461.D  
 Acq On : 07 Oct 2019 14:18  
 Operator : SY/VA  
 Sample : VIBLK  
 Misc : 5.00G/5ML/MSVOA W/SOIL  
 ALS Vial : 11 Sample Multiplier: 1

Instrument :  
 MSVOA\_W  
 ClientSampleId :  
 VIBLK

Quant Time: Oct 07 17:46:06 2019  
 Quant Method : Z:\VOASRV\HPCHEM1\MSVOA\_W\METHOD\82W100119S.M  
 Quant Title : SW846 8260  
 QLast Update : Wed Oct 02 11:49:57 2019  
 Response via : Initial Calibration

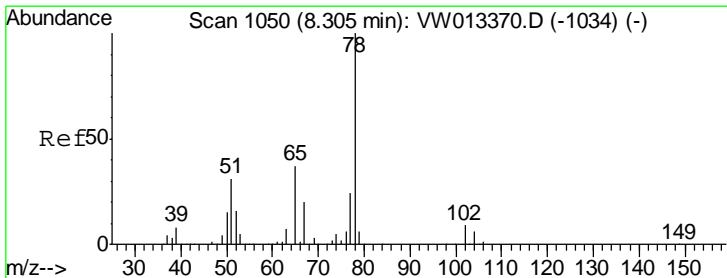
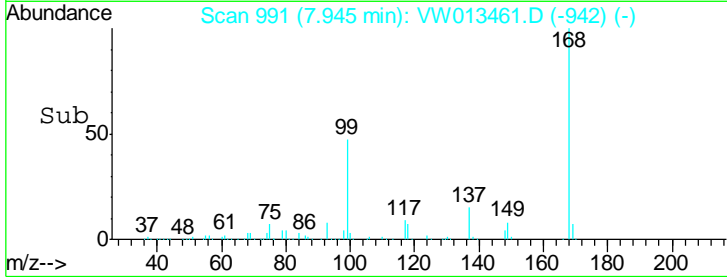
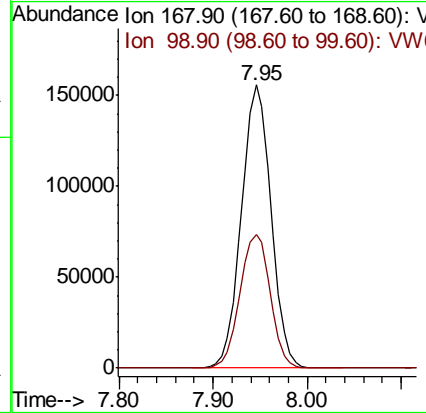
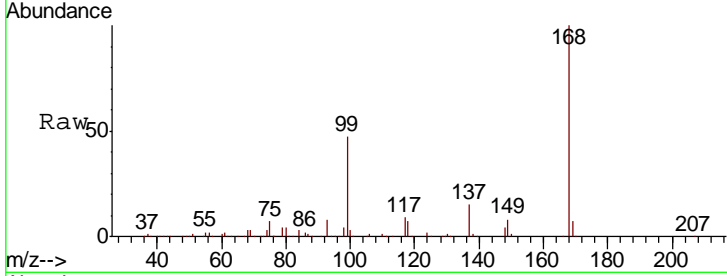




#1  
 Pentafluorobenzene  
 Concen: 50.000 ug/l  
 RT: 7.95 min Scan# 991  
 Delta R.T. 0.00 min  
 Lab File: VW013461.D  
 Acq: 07 Oct 2019 14:18

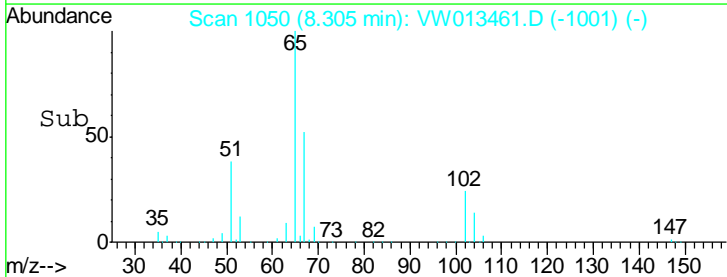
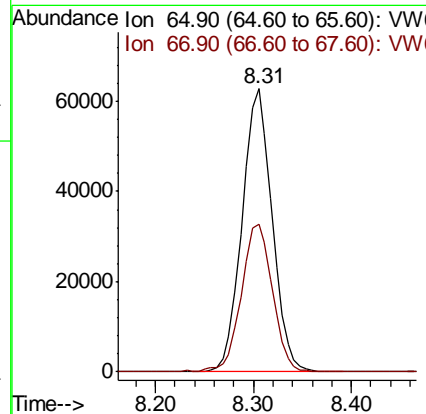
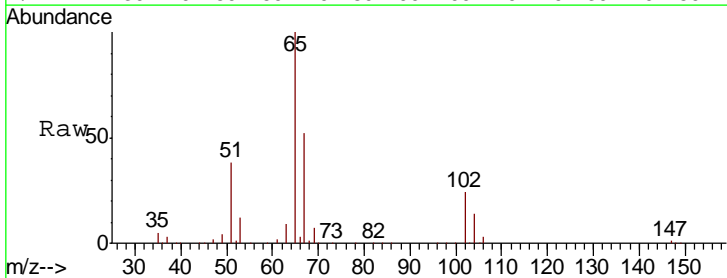
Instrument :  
 MSVOA\_W  
 ClientSampled :  
 VIBLK

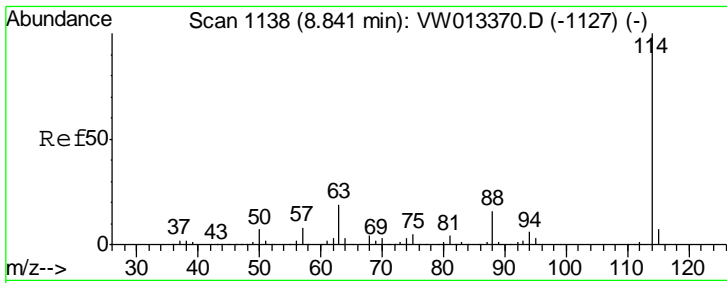
Tgt Ion: 168 Resp: 341805  
 Ion Ratio Lower Upper  
 168 100  
 99 47.4 40.2 60.4



#33  
 1,2-Dichloroethane-d4  
 Concen: 52.453 ug/l  
 RT: 8.31 min Scan# 1050  
 Delta R.T. 0.00 min  
 Lab File: VW013461.D  
 Acq: 07 Oct 2019 14:18

Tgt Ion: 65 Resp: 133869  
 Ion Ratio Lower Upper  
 65 100  
 67 54.1 0.0 106.2

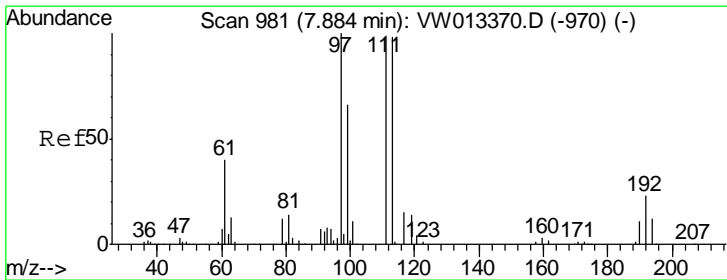
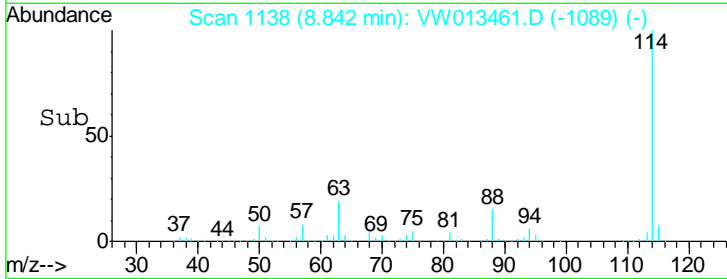
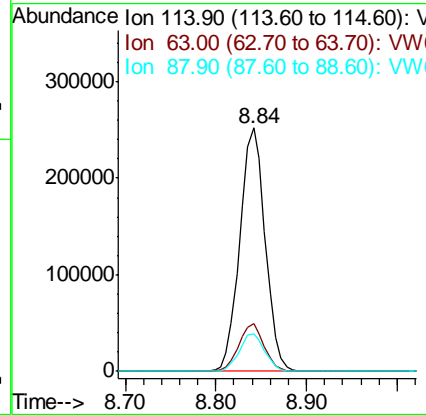
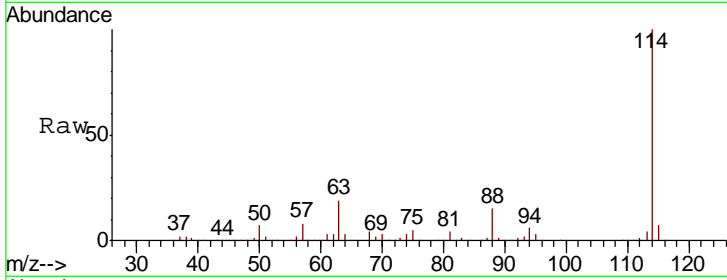




#34  
 1,4-Difluorobenzene  
 Concen: 50.000 ug/l  
 RT: 8.84 min Scan# 1138  
 Delta R.T. 0.00 min  
 Lab File: VW013461.D  
 Acq: 07 Oct 2019 14:18

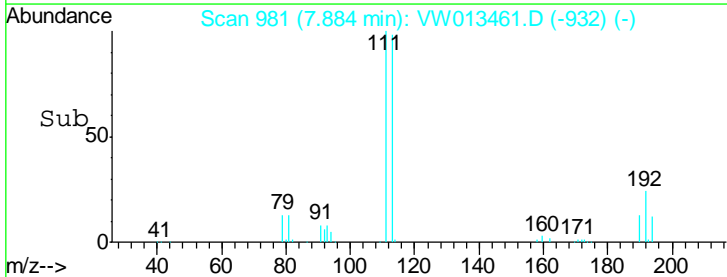
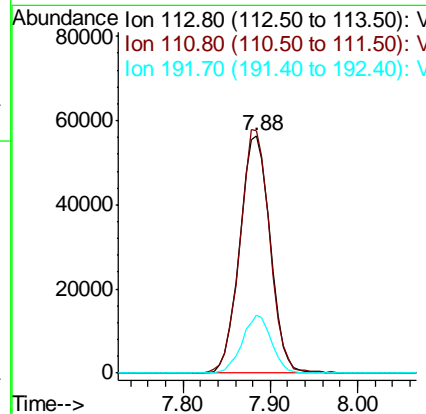
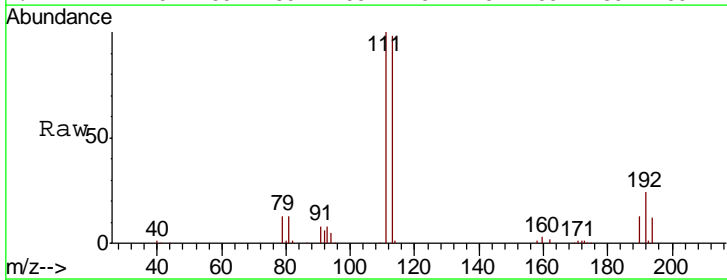
Instrument :  
 MSVOA\_W  
 ClientSampled :  
 VIBLK

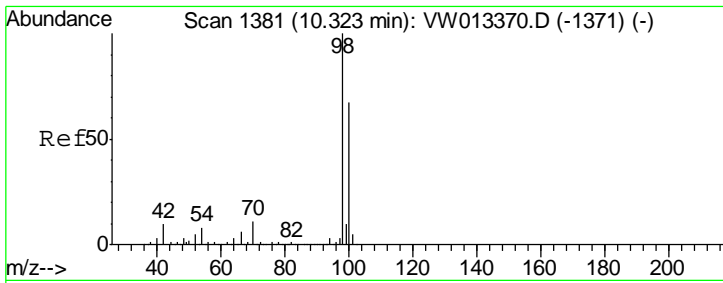
Tgt Ion	Resp	Lower	Upper
114	488488		
63	19.4	0.0	41.4
88	15.3	0.0	32.0



#35  
 Dibromofluoromethane  
 Concen: 53.206 ug/l  
 RT: 7.88 min Scan# 981  
 Delta R.T. 0.00 min  
 Lab File: VW013461.D  
 Acq: 07 Oct 2019 14:18

Tgt Ion	Resp	Lower	Upper
113	136378		
111	100.5	81.9	122.9
192	23.4	19.1	28.7

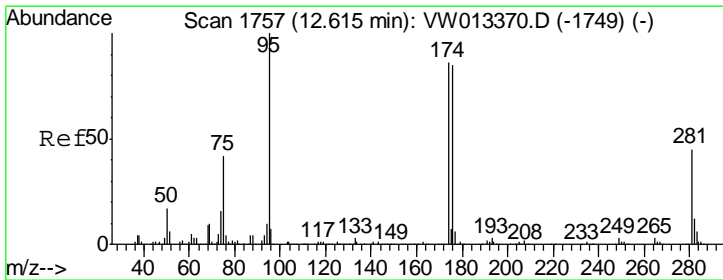
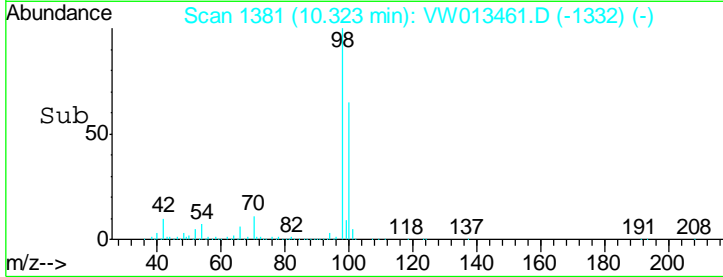
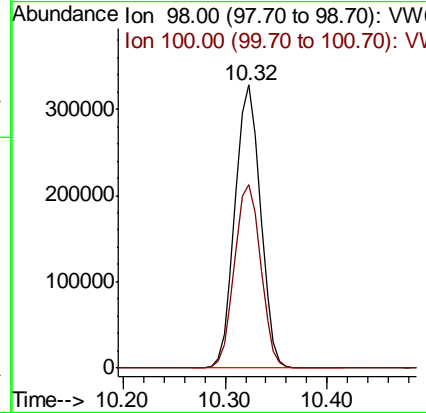
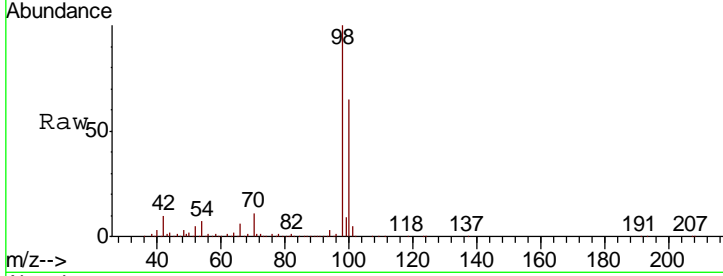




#50  
 Toluene-d8  
 Concen: 53.441 ug/l  
 RT: 10.32 min Scan# 1381  
 Delta R.T. 0.00 min  
 Lab File: VW013461.D  
 Acq: 07 Oct 2019 14:18

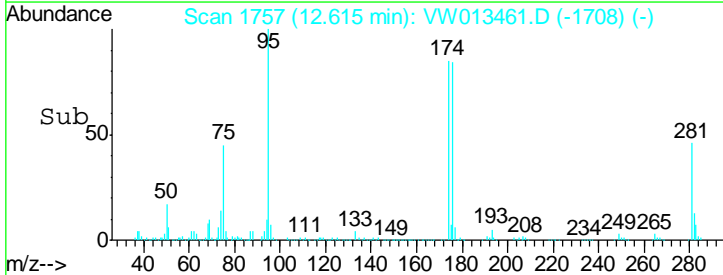
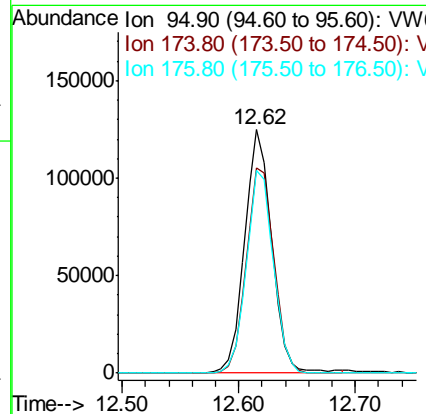
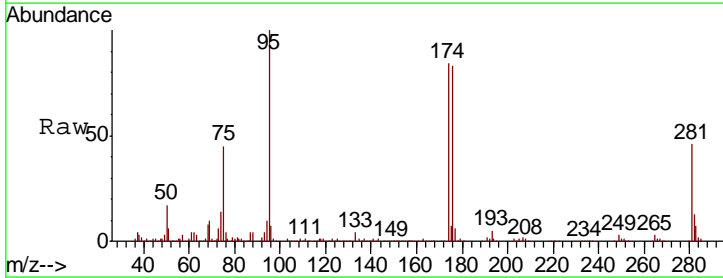
Instrument : MSVOA\_W  
 ClientSampled : VIBLK

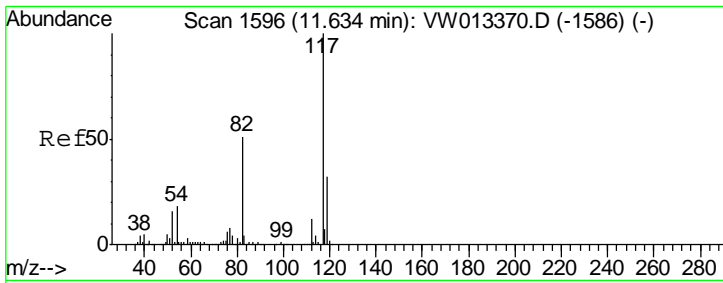
Tgt Ion	Resp	Lower	Upper
98	100		
100	66.5	52.9	79.3



#62  
 4-Bromofluorobenzene  
 Concen: 56.615 ug/l  
 RT: 12.62 min Scan# 1757  
 Delta R.T. 0.00 min  
 Lab File: VW013461.D  
 Acq: 07 Oct 2019 14:18

Tgt Ion	Resp	Lower	Upper
95	100		
174	86.9	0.0	178.4
176	83.6	0.0	172.2

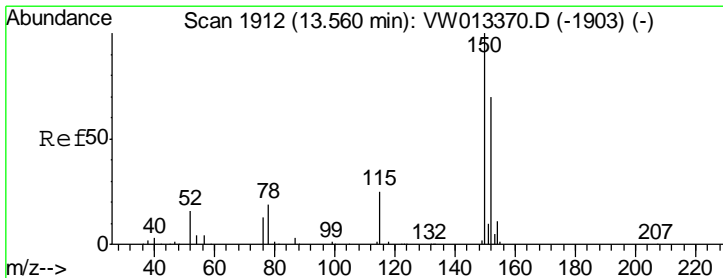
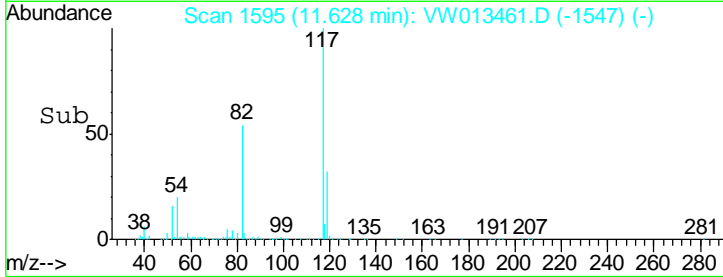
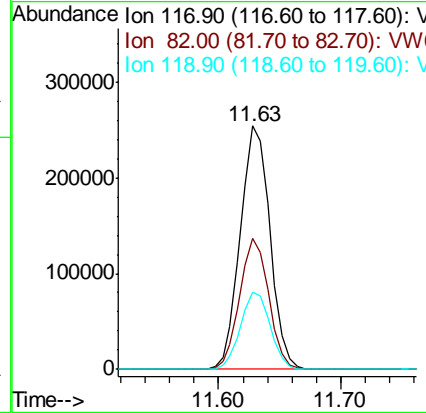
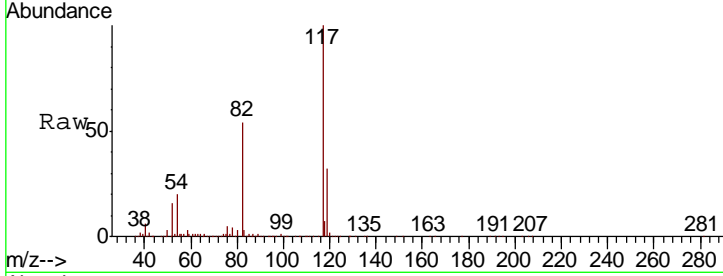




#63  
 Chlorobenzene-d5  
 Concen: 50.000 ug/l  
 RT: 11.63 min Scan# 1595  
 Delta R.T. -0.01 min  
 Lab File: VW013461.D  
 Acq: 07 Oct 2019 14:18

Instrument : MSVOA\_W  
 ClientSampled : VIBLK

Tgt Ion	Resp	Lower	Upper
117	427191		
82	53.6	45.9	68.9
119	31.7	26.2	39.2



#72  
 1,4-Dichlorobenzene-d4  
 Concen: 50.000 ug/l  
 RT: 13.55 min Scan# 1911  
 Delta R.T. -0.01 min  
 Lab File: VW013461.D  
 Acq: 07 Oct 2019 14:18

Tgt Ion	Resp	Lower	Upper
152	216495		
115	54.6	27.3	81.9
150	156.0	0.0	349.0

