

Data Path : Z:\VOASRV\HPCHEM1\MSVOA W\DATA\VW100720\
 Data File : VW016813.D
 Acq On : 06 Oct 2020 23:29
 Operator : SY/VA
 Sample : L4209-09
 Misc : 5.14G/10ML/MSVOA W/SOIL
 ALS Vial : 1 Sample Multiplier: 1

Instrument :
 MSVOA_W
 ClientSampled :
 JLWT2

Quant Time: Oct 07 03:15:19 2020
 Quant Method : Z:\VOASRV\HPCHEM1\MSVOA_W\METHOD\SOM2WLM100720S.M
 Quant Title : VOC Analysis
 QLast Update : Wed Oct 07 03:05:19 2020
 Response via : Initial Calibration

| Internal Standards | R.T. | QIon | Response | Conc | Units | Dev(Min) |
|----------------------------|-------|------|----------|-------|-------|----------|
| 1) 1,4-Difluorobenzene | 8.85 | 114 | 558674 | 25.00 | ug/L | 0.00 |
| 28) Chlorobenzene-d5 | 11.63 | 117 | 501012 | 25.00 | ug/L | 0.00 |
| 60) 1,4-Dichlorobenzene-d4 | 13.56 | 152 | 228540 | 25.00 | ug/L | 0.00 |

System Monitoring Compounds

| | | | | | | |
|--------------------------------|--------|-------|----------|----------|------|---------|
| 4) Vinyl Chloride-d3 | 2.36 | 65 | 158304 | 28.72 | ug/L | 0.00 |
| Spiked Amount | 25.000 | Range | 30 - 150 | Recovery | = | 114.88% |
| 7) Chloroethane-d5 | 2.90 | 69 | 130766 | 28.28 | ug/L | 0.00 |
| Spiked Amount | 25.000 | Range | 30 - 150 | Recovery | = | 113.12% |
| 10) 1,1-Dichloroethene-d2 | 4.03 | 63 | 224269 | 19.16 | ug/L | 0.00 |
| Spiked Amount | 25.000 | Range | 45 - 110 | Recovery | = | 76.64% |
| 20) 2-Butanone-d5 | 7.08 | 46 | 58399 | 46.78 | ug/L | 0.00 |
| Spiked Amount | 50.000 | Range | 20 - 135 | Recovery | = | 93.56% |
| 24) Chloroform-d | 7.65 | 84 | 316920 | 26.88 | ug/L | 0.00 |
| Spiked Amount | 25.000 | Range | 40 - 150 | Recovery | = | 107.52% |
| 26) 1,2-Dichloroethane-d4 | 8.31 | 65 | 156253 | 27.44 | ug/L | 0.00 |
| Spiked Amount | 25.000 | Range | 70 - 130 | Recovery | = | 109.76% |
| 29) Benzene-d6 | 8.27 | 84 | 652941 | 28.69 | ug/L | 0.00 |
| Spiked Amount | 25.000 | Range | 20 - 135 | Recovery | = | 114.76% |
| 33) 1,2-Dichloropropane-d6 | 9.27 | 67 | 173371 | 28.35 | ug/L | 0.00 |
| Spiked Amount | 25.000 | Range | 70 - 120 | Recovery | = | 113.40% |
| 37) Toluene-d8 | 10.32 | 98 | 626724 | 29.19 | ug/L | 0.00 |
| Spiked Amount | 25.000 | Range | 30 - 130 | Recovery | = | 116.76% |
| 38) trans-1,3-Dichloropropene- | 10.58 | 79 | 70027 | 25.96 | ug/L | 0.00 |
| Spiked Amount | 25.000 | Range | 30 - 135 | Recovery | = | 103.84% |
| 39) 2-Hexanone-d5 | 10.93 | 63 | 47792 | 50.54 | ug/L | 0.00 |
| Spiked Amount | 50.000 | Range | 20 - 135 | Recovery | = | 101.08% |
| 48) 1,1,2,2-Tetrachloroethane- | 12.69 | 84 | 123677 | 25.04 | ug/L | 0.00 |
| Spiked Amount | 25.000 | Range | 45 - 120 | Recovery | = | 100.16% |
| 61) 1,2-Dichlorobenzene-d4 | 13.85 | 152 | 208308 | 28.74 | ug/L | 0.00 |
| Spiked Amount | 25.000 | Range | 75 - 120 | Recovery | = | 114.96% |

Target Compounds

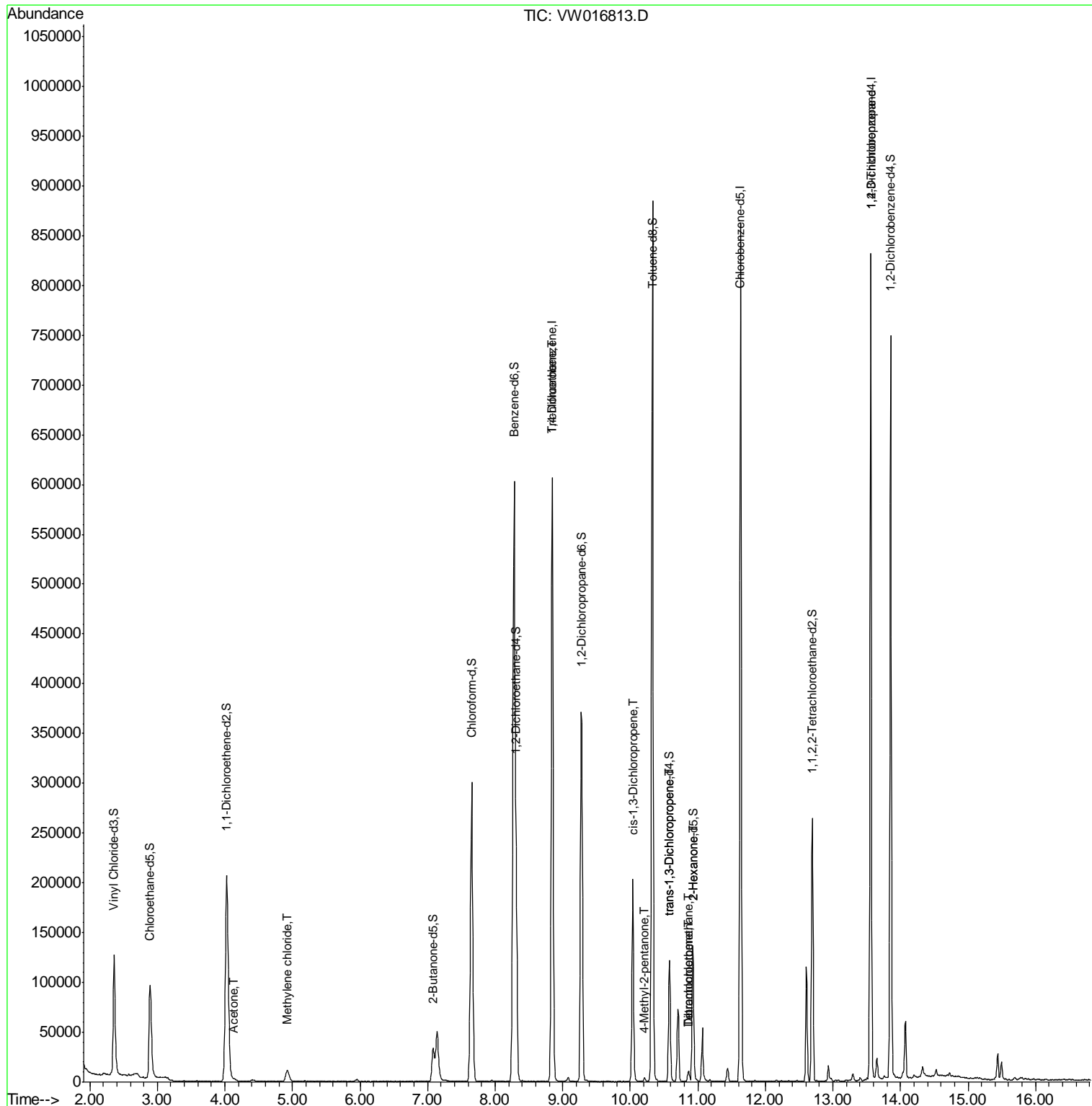
| Target Compounds | R.T. | QIon | Response | Conc | Units | Ovalue |
|-------------------------------|-------|------|----------|-------|--------|--------|
| 13) Acetone | 4.13 | 43 | 2307 | 2.442 | ug/L | 54 |
| 16) Methylene chloride | 4.93 | 84 | 11662 | 1.513 | ug/L | 98 |
| 35) Trichloroethene | 8.84 | 95 | 16042 | 2.108 | ug/L # | 2 |
| 42) cis-1,3-Dichloropropene | 10.04 | 75 | 5046 | 0.520 | ug/L # | 44 |
| 43) 4-Methyl-2-pentanone | 10.21 | 43 | 2570 | 0.839 | ug/L | 94 |
| 45) trans-1,3-Dichloropropene | 10.57 | 75 | 3074 | 0.377 | ug/L | 91 |
| 47) Tetrachloroethene | 10.87 | 164 | 2482 | 0.352 | ug/L | 95 |
| 49) 2-Hexanone | 10.93 | 43 | 5586 | 2.763 | ug/L # | 64 |
| 50) Dibromochloromethane | 10.87 | 129 | 2238 | 0.364 | ug/L # | 11 |
| 59) 1,2,3-Trichloropropane | 13.56 | 75 | 22904 | 5.785 | ug/L | 92 |

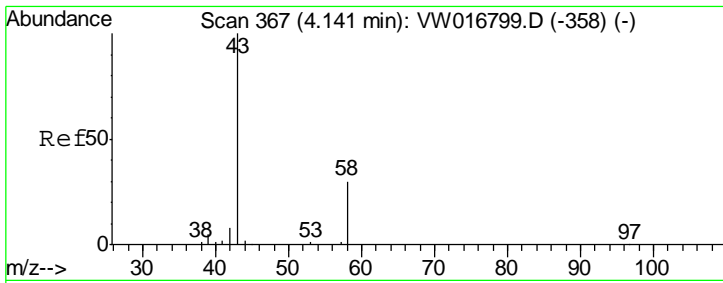
(#) = qualifier out of range (m) = manual integration (+) = signals summed

Data Path : Z:\VOASRV\HPCHEM1\MSVOA W\DATA\VW100720\
 Data File : VW016813.D
 Acq On : 06 Oct 2020 23:29
 Operator : SY/VA
 Sample : L4209-09
 Misc : 5.14G/10ML/MSVOA W/SOIL
 ALS Vial : 1 Sample Multiplier: 1

Instrument :
 MSVOA_W
 ClientSampled :
 JLWT2

Quant Time: Oct 07 03:15:19 2020
 Quant Method : Z:\VOASRV\HPCHEM1\MSVOA_W\METHOD\SOM2WLM100720S.M
 Quant Title : VOC Analysis
 QLast Update : Wed Oct 07 03:05:19 2020
 Response via : Initial Calibration

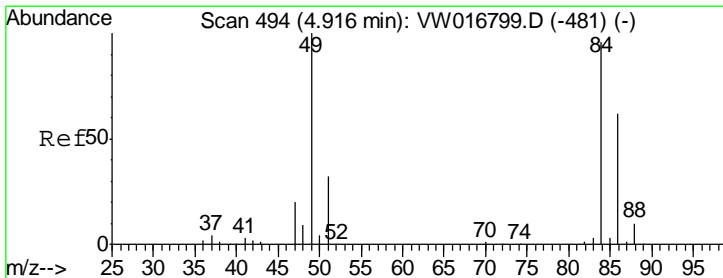
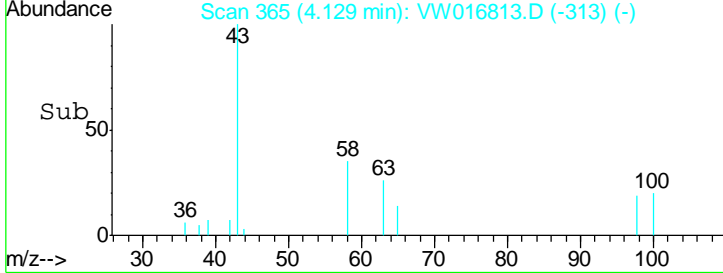
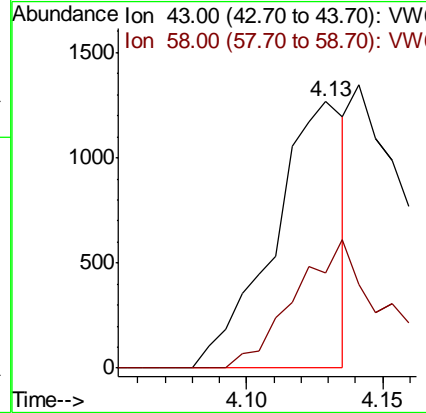
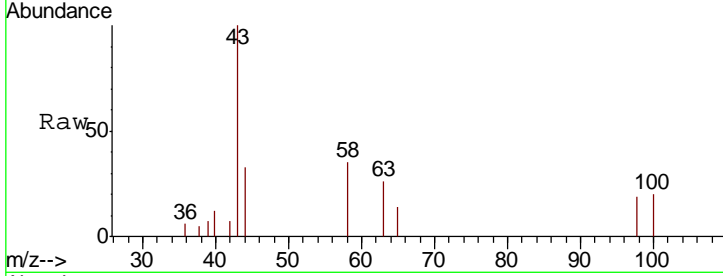




#13
 Acetone
 Concen: 2.442 ug/L
 RT: 4.13 min Scan# 365
 Delta R.T. -0.01 min
 Lab File: VW016813.D
 Acq: 06 Oct 2020 23:29

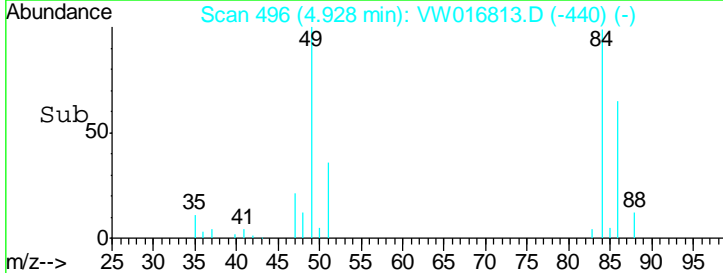
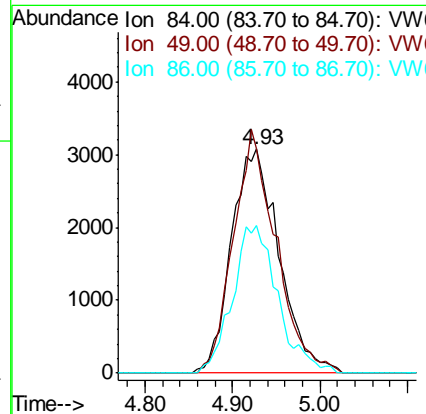
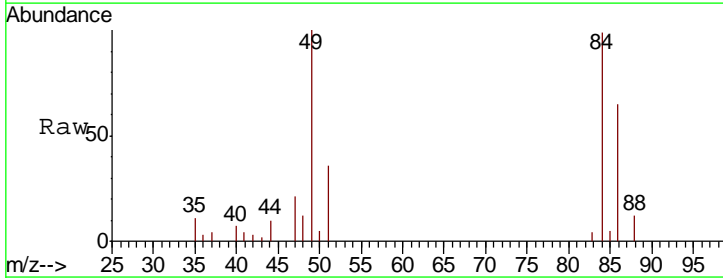
Instrument :
 MSVOA_W
 ClientSampled :
 JLWT2

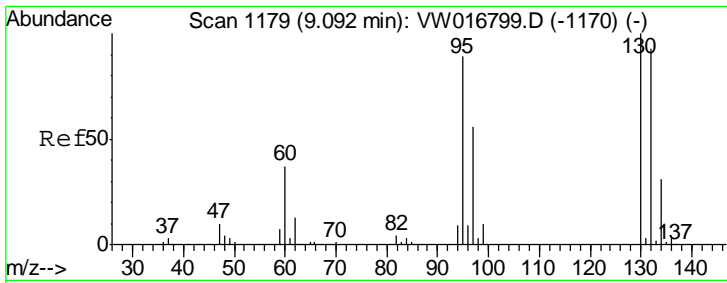
| Tgt Ion | Resp | Lower | Upper |
|---------|------|-------|-------|
| 43 | 100 | | |
| 58 | 60.3 | 0.0 | 67.6 |



#16
 Methylene chloride
 Concen: 1.513 ug/L
 RT: 4.93 min Scan# 496
 Delta R.T. 0.01 min
 Lab File: VW016813.D
 Acq: 06 Oct 2020 23:29

| Tgt Ion | Resp | Lower | Upper |
|---------|-------|-------|-------|
| 84 | 100 | | |
| 49 | 100.5 | 73.1 | 135.8 |
| 86 | 65.7 | 46.0 | 85.4 |

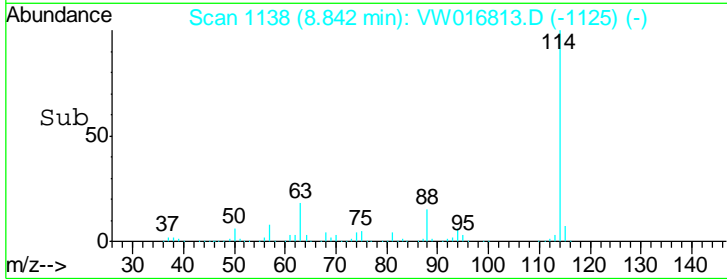
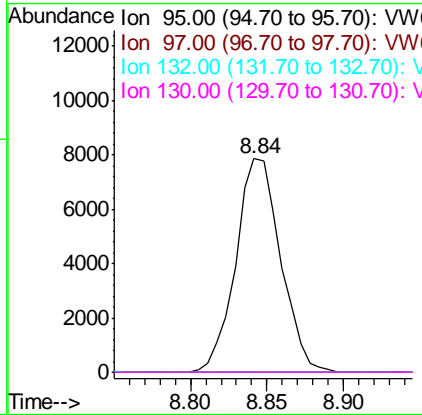
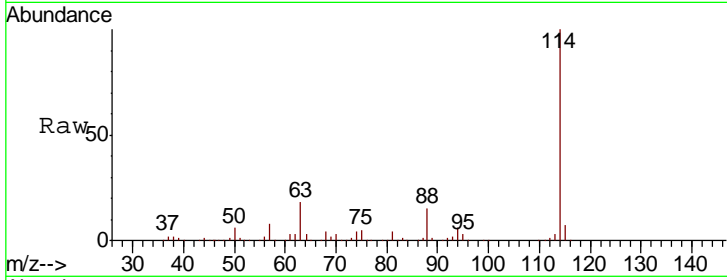




#35
 Trichloroethene
 Concen: 2.108 ug/L
 RT: 8.84 min Scan# 1138
 Delta R.T. -0.25 min
 Lab File: VW016813.D
 Acq: 06 Oct 2020 23:29

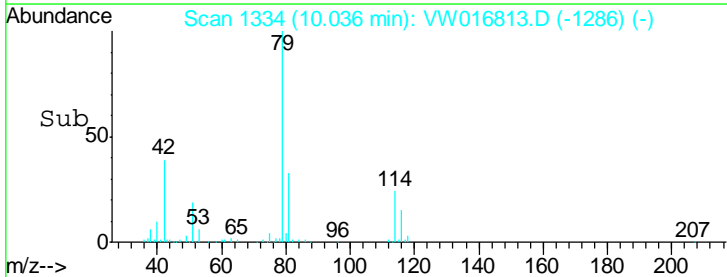
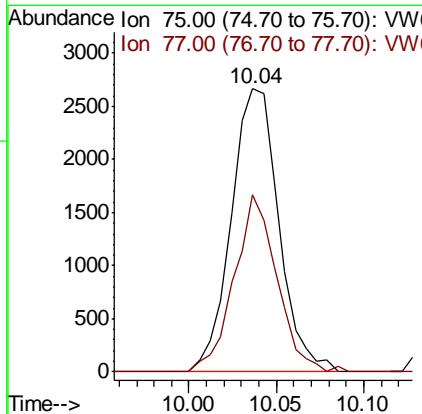
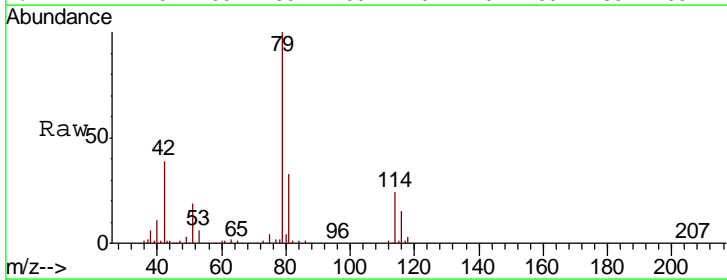
Instrument :
 MSVOA_W
 ClientSampled :
 JLWT2

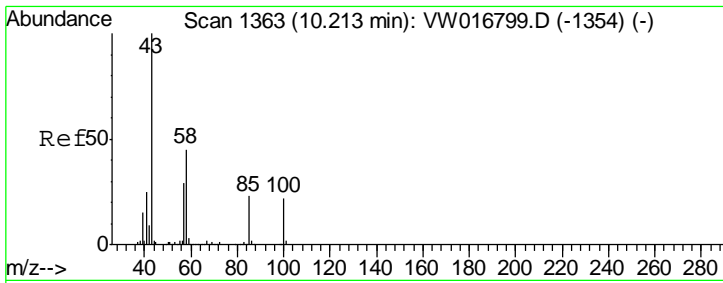
| Tgt Ion | Resp | Lower | Upper |
|---------|-------|-------|--------|
| 95 | 16042 | | |
| 97 | 0.3 | 44.7 | 83.1# |
| 132 | 0.4 | 73.8 | 137.2# |
| 130 | 0.0 | 77.1 | 143.3# |



#42
 cis-1,3-Dichloropropene
 Concen: 0.520 ug/L
 RT: 10.04 min Scan# 1334
 Delta R.T. -0.04 min
 Lab File: VW016813.D
 Acq: 06 Oct 2020 23:29

| Tgt Ion | Resp | Lower | Upper |
|---------|------|-------|-------|
| 75 | 5046 | | |
| 77 | 62.4 | 22.1 | 41.1# |

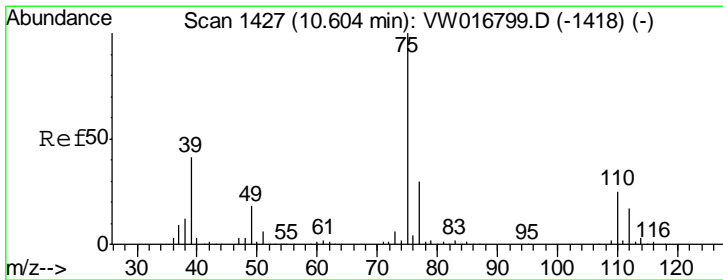
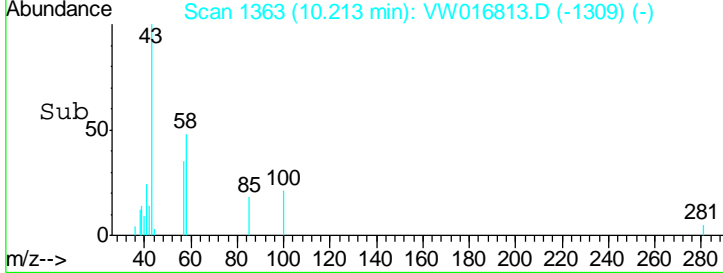
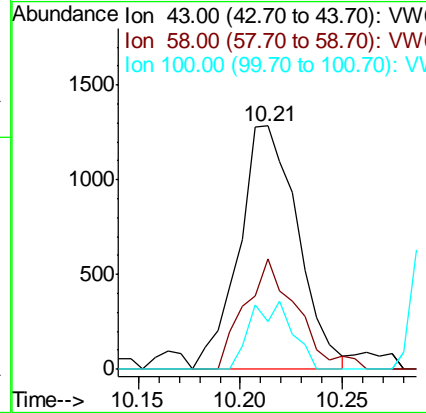
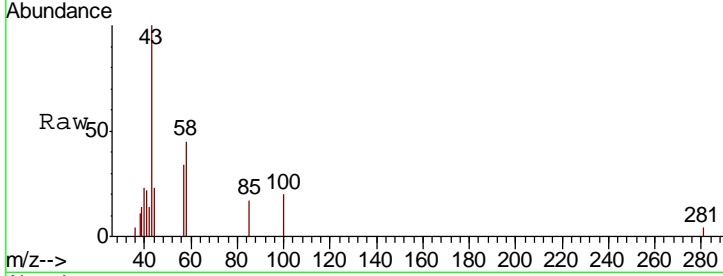




#43
 4-Methyl-2-pentanone
 Concen: 0.839 ug/L
 RT: 10.21 min Scan# 1363
 Delta R.T. -0.00 min
 Lab File: VW016813.D
 Acq: 06 Oct 2020 23:29

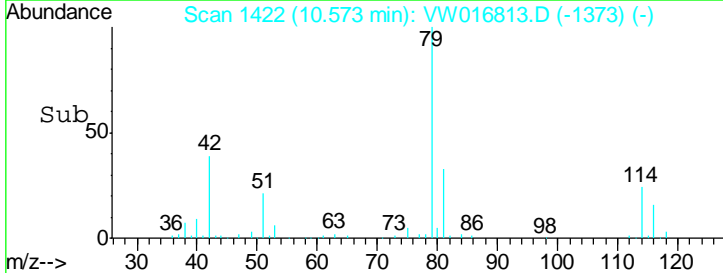
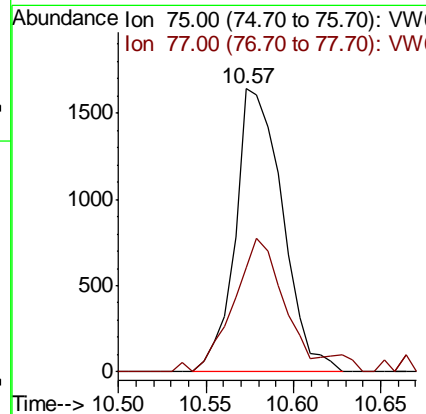
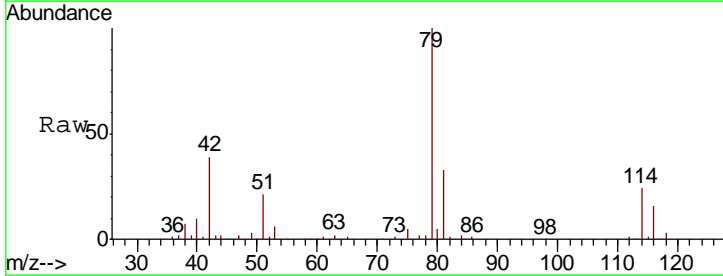
Instrument : MSVOA_W
 ClientSampled : JLWT2

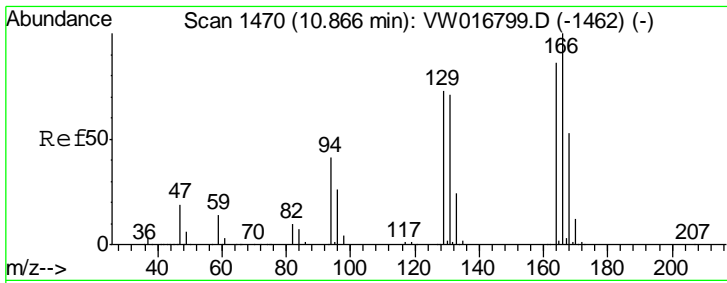
| Tgt Ion | Resp | Lower | Upper |
|---------|------|-------|-------|
| 43 | 100 | | |
| 58 | 38.6 | 34.7 | 52.1 |
| 100 | 19.9 | 16.9 | 25.3 |



#45
 trans-1,3-Dichloropropene
 Concen: 0.377 ug/L
 RT: 10.57 min Scan# 1422
 Delta R.T. -0.03 min
 Lab File: VW016813.D
 Acq: 06 Oct 2020 23:29

| Tgt Ion | Resp | Lower | Upper |
|---------|------|-------|-------|
| 75 | 100 | | |
| 77 | 36.8 | 22.2 | 41.2 |

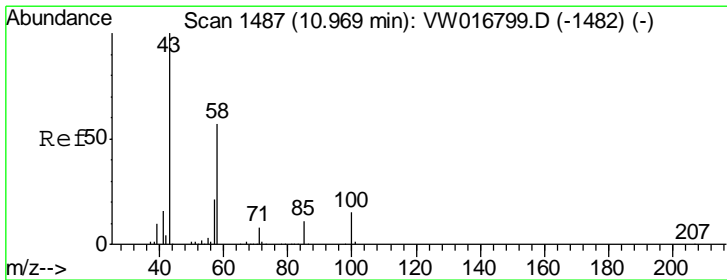
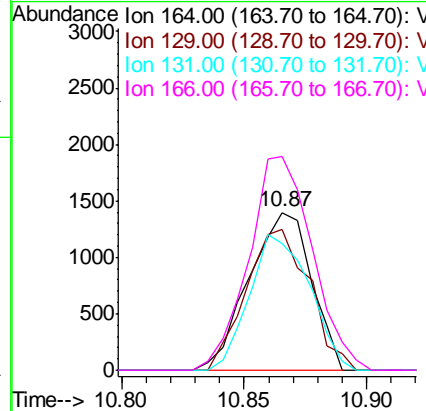
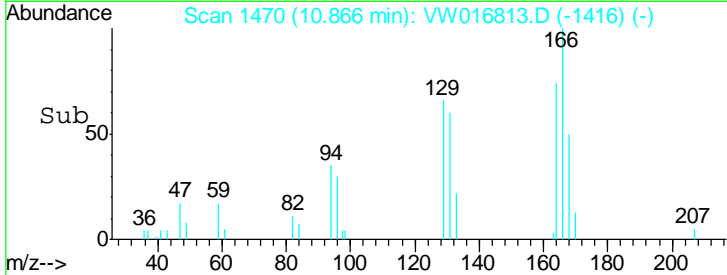
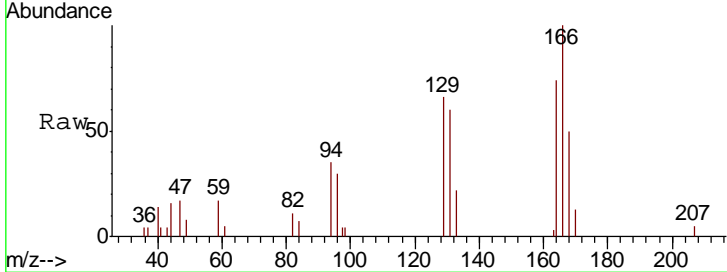




#47
 Tetrachloroethene
 Concen: 0.352 ug/L
 RT: 10.87 min Scan# 1470
 Delta R.T. -0.00 min
 Lab File: VW016813.D
 Acq: 06 Oct 2020 23:29

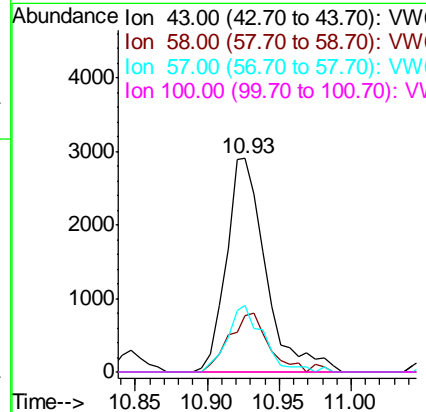
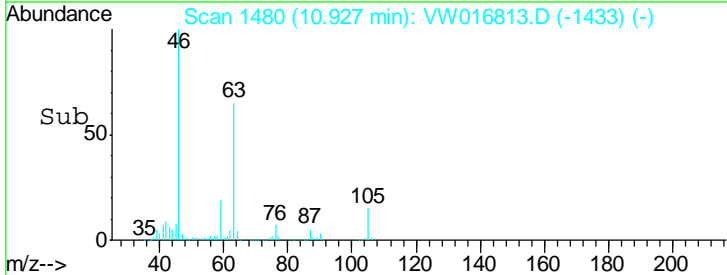
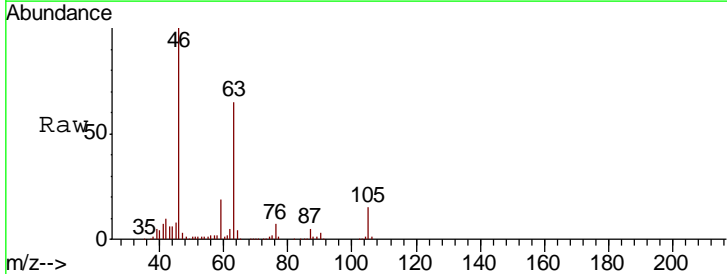
Instrument :
 MSVOA_W
 ClientSampleId :
 JLWT2

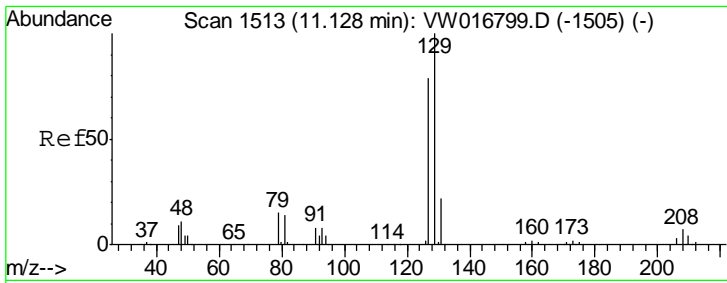
| Tgt Ion | Resp | Lower | Upper |
|---------|-------|-------|-------|
| 164 | 100 | | |
| 129 | 89.3 | 61.7 | 114.7 |
| 131 | 80.6 | 59.7 | 110.9 |
| 166 | 135.4 | 88.3 | 164.1 |



#49
 2-Hexanone
 Concen: 2.763 ug/L
 RT: 10.93 min Scan# 1480
 Delta R.T. -0.04 min
 Lab File: VW016813.D
 Acq: 06 Oct 2020 23:29

| Tgt Ion | Resp | Lower | Upper |
|---------|------|-------|-------|
| 43 | 100 | | |
| 58 | 27.3 | 47.1 | 70.7# |
| 57 | 27.4 | 16.2 | 24.4# |
| 100 | 0.0 | 13.3 | 19.9# |

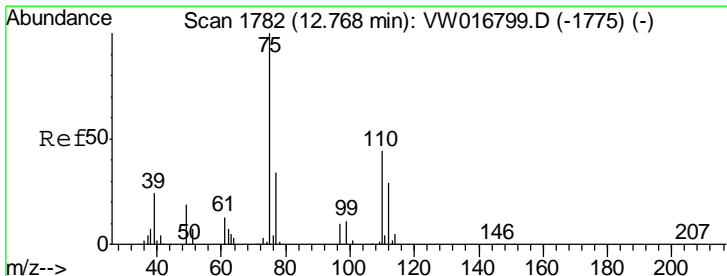
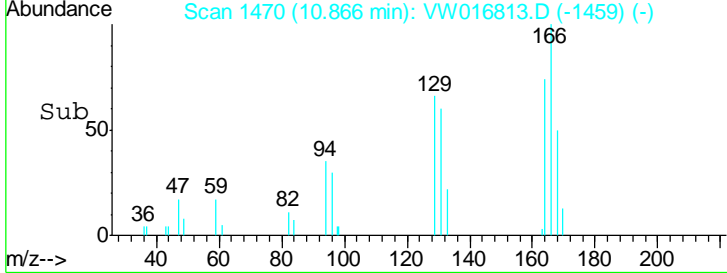
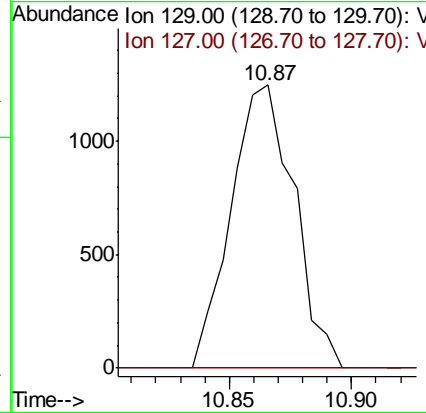
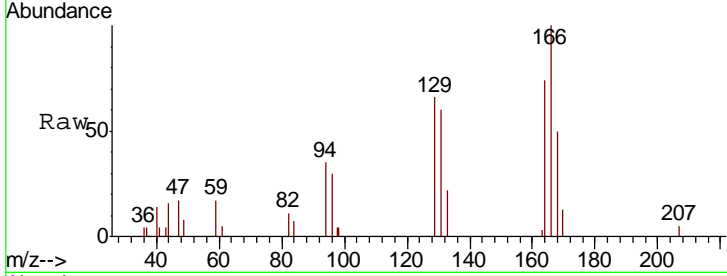




#50
 Dibromochloromethane
 Concen: 0.364 ug/L
 RT: 10.87 min Scan# 1470
 Delta R.T. -0.26 min
 Lab File: VW016813.D
 Acq: 06 Oct 2020 23:29

Instrument : MSVOA_W
 ClientSampled : JLWT2

Tgt Ion: 129 Resp: 2238
 Ion Ratio Lower Upper
 129 100
 127 0.0 54.0 100.4#



#59
 1,2,3-Trichloropropane
 Concen: 5.785 ug/L
 RT: 13.56 min Scan# 1912
 Delta R.T. 0.79 min
 Lab File: VW016813.D
 Acq: 06 Oct 2020 23:29

Tgt Ion: 75 Resp: 22904
 Ion Ratio Lower Upper
 75 100
 77 37.2 26.2 39.2

