

Data Path : Z:\VOASRV\HPCHEM1\MSVOA W\DATA\VW100720\  
 Data File : VW016811.D  
 Acq On : 06 Oct 2020 22:42  
 Operator : SY/VA  
 Sample : L4235-17  
 Misc : 3.91G/10ML/MSVOA W/SOIL  
 ALS Vial : 1 Sample Multiplier: 1

Instrument :  
 MSVOA\_W  
 ClientSampleId :  
 C0AQ3

Integration Parameters: LSCINT.P

Integrator: RTE  
 Smoothing : OFF  
 Sampling : 1  
 Start Thrs: 0.2  
 Stop Thrs : 0

Filtering: 5  
 Min Area: 0 % of largest Peak  
 Max Peaks: 100  
 Peak Location: TOP

If leading or trailing edge < 100 prefer < Baseline drop else tangent >  
 Peak separation: 5

Method : Z:\VOASRV\HPCHEM1\MSVOA\_W\METHOD\SOM2WLM100720S.M  
 Title : VOC Analysis

Signal : TIC

peak #	R.T. min	first scan	max scan	last scan	PK TY	peak height	corr. area	corr. % max.	% of total
1	2.361	69	75	84	rVB	105445	202520	15.23%	2.378%
2	2.897	156	163	175	rVB	80125	188106	14.14%	2.209%
3	3.032	183	185	192	rVB6	3201	5517	0.41%	0.065%
4	3.403	236	246	251	rBV5	1667	4799	0.36%	0.056%
5	3.592	274	277	282	rBV5	480	762	0.06%	0.009%
6	3.891	317	326	331	rBV4	994	2846	0.21%	0.033%
7	4.025	335	348	362	rBV	177682	519552	39.06%	6.100%
8	4.141	362	367	373	rBV	3889	10167	0.76%	0.119%
9	4.403	400	410	413	rBV3	1126	3189	0.24%	0.037%
10	4.928	482	496	513	rVB5	7791	31671	2.38%	0.372%
11	5.117	525	527	531	rBV2	514	667	0.05%	0.008%
12	5.165	533	535	537	rVB3	470	428	0.03%	0.005%
13	5.446	575	581	585	rBV2	784	1543	0.12%	0.018%
14	5.562	597	600	604	rBV	324	509	0.04%	0.006%
15	5.629	609	611	618	rVB	453	549	0.04%	0.006%
16	5.952	652	664	673	rBV7	3761	11792	0.89%	0.138%
17	6.293	713	720	721	rBV2	553	911	0.07%	0.011%
18	6.311	721	723	727	rVV2	623	610	0.05%	0.007%
19	6.409	736	739	743	rBV	271	394	0.03%	0.005%
20	6.659	777	780	783	rBV2	274	443	0.03%	0.005%
21	6.988	829	834	835	rBV2	901	1033	0.08%	0.012%
22	7.007	835	837	841	rVB3	609	617	0.05%	0.007%
23	7.092	842	851	856	rBV2	21405	62952	4.73%	0.739%
24	7.488	913	916	918	rVB2	436	467	0.04%	0.005%
25	7.513	918	920	923	rBV2	346	580	0.04%	0.007%
26	7.653	933	943	956	rBV	232983	558279	41.97%	6.555%
27	7.945	989	991	992	rBV2	568	395	0.03%	0.005%
28	7.964	992	994	996	rVB2	682	515	0.04%	0.006%
29	8.281	1033	1046	1062	rBV2	461656	1330124	100.00%	15.617%
30	8.494	1078	1081	1083	rBV2	499	462	0.03%	0.005%
31	8.695	1107	1114	1121	rBV5	848	1950	0.15%	0.023%
32	8.848	1131	1139	1153	rBV	562924	1108702	83.35%	13.017%
33	9.079	1170	1177	1183	rVB4	1162	2445	0.18%	0.029%
34	9.280	1200	1210	1219	rBV	285709	573554	43.12%	6.734%

Data Path : Z:\VOASRV\HPCHEM1\MSVOA W\DATA\VW100720\  
 Data File : VW016811.D  
 Acq On : 06 Oct 2020 22:42  
 Operator : SY/VA  
 Sample : L4235-17  
 Misc : 3.91G/10ML/MSVOA W/SOIL  
 ALS Vial : 1 Sample Multiplier: 1

Instrument :  
 MSVOA\_W  
 ClientSampleId :  
 C0AQ3

## Integration Parameters: LSCINT.P

Integrator: RTE  
 Smoothing : OFF  
 Sampling : 1  
 Start Thrs: 0.2  
 Stop Thrs : 0

Filtering: 5  
 Min Area: 0 % of largest Peak  
 Max Peaks: 100  
 Peak Location: TOP

If leading or trailing edge < 100 prefer < Baseline drop else tangent >  
 Peak separation: 5

Method : Z:\VOASRV\HPCHEM1\MSVOA\_W\METHOD\SOM2WLM100720S.M  
 Title : VOC Analysis

35	9.390	1225	1228	1231	rVB2	586	647	0.05%	0.008%
36	9.469	1237	1241	1246	rVB3	551	928	0.07%	0.011%
37	9.683	1272	1276	1280	rVB2	335	464	0.03%	0.005%
38	9.762	1283	1289	1296	rVB5	4032	7939	0.60%	0.093%
39	9.896	1304	1311	1320	rBV	9068	17908	1.35%	0.210%
40	10.043	1326	1335	1345	rBV	102077	188955	14.21%	2.219%
41	10.134	1345	1350	1358	rVB4	3559	7682	0.58%	0.090%
42	10.250	1362	1369	1374	rBV	4342	7714	0.58%	0.091%
43	10.329	1374	1382	1389	rBV	579298	1009928	75.93%	11.858%
44	10.390	1389	1392	1397	rVB	4072	6115	0.46%	0.072%
45	10.488	1403	1408	1409	rBV3	1063	1411	0.11%	0.017%
46	10.518	1409	1413	1417	rVB4	2425	4042	0.30%	0.047%
47	10.579	1417	1423	1430	rBV	62197	111797	8.41%	1.313%
48	10.707	1437	1444	1450	rBV	6255	11426	0.86%	0.134%
49	10.780	1450	1456	1464	rVB4	4596	8368	0.63%	0.098%
50	10.927	1474	1480	1496	rBV2	84657	181904	13.68%	2.136%
51	11.036	1496	1498	1499	rVV2	887	973	0.07%	0.011%
52	11.073	1499	1504	1510	rVB4	3621	7794	0.59%	0.092%
53	11.176	1520	1521	1525	rVB4	795	792	0.06%	0.009%
54	11.225	1525	1529	1531	rVB2	439	548	0.04%	0.006%
55	11.341	1545	1548	1553	rBV3	1218	1320	0.10%	0.015%
56	11.408	1553	1559	1561	rBV5	672	1153	0.09%	0.014%
57	11.445	1562	1565	1569	rVB3	1144	1216	0.09%	0.014%
58	11.548	1578	1582	1585	rBV4	704	804	0.06%	0.009%
59	11.634	1585	1596	1603	rBV	583072	973318	73.17%	11.428%
60	11.878	1625	1636	1643	rVB8	3364	8636	0.65%	0.101%
61	11.939	1643	1646	1649	rBV4	397	468	0.04%	0.005%
62	12.073	1664	1668	1671	rBV4	1379	2165	0.16%	0.025%
63	12.164	1679	1683	1684	rVV3	734	964	0.07%	0.011%
64	12.176	1684	1685	1692	rVB5	1407	1916	0.14%	0.022%
65	12.237	1692	1695	1696	rBV3	871	868	0.07%	0.010%
66	12.323	1706	1709	1710	rBV3	529	544	0.04%	0.006%
67	12.353	1711	1714	1717	rVB3	608	634	0.05%	0.007%
68	12.438	1725	1728	1729	rBV2	682	637	0.05%	0.007%
69	12.524	1737	1742	1744	rBV3	758	965	0.07%	0.011%
70	12.609	1746	1756	1762	rBV2	17958	37500	2.82%	0.440%
71	12.695	1762	1770	1777	rBV	160297	265223	19.94%	3.114%

Data Path : Z:\VOASRV\HPCHEM1\MSVOA W\DATA\VW100720\  
 Data File : VW016811.D  
 Acq On : 06 Oct 2020 22:42  
 Operator : SY/VA  
 Sample : L4235-17  
 Misc : 3.91G/10ML/MSVOA W/SOIL  
 ALS Vial : 1 Sample Multiplier: 1

Instrument :  
 MSVOA\_W  
 ClientSampleId :  
 C0AQ3

## Integration Parameters: LSCINT.P

Integrator: RTE  
 Smoothing : OFF  
 Sampling : 1  
 Start Thrs: 0.2  
 Stop Thrs : 0

Filtering: 5  
 Min Area: 0 % of largest Peak  
 Max Peaks: 100  
 Peak Location: TOP

If leading or trailing edge < 100 prefer < Baseline drop else tangent >  
 Peak separation: 5

Method : Z:\VOASRV\HPCHEM1\MSVOA\_W\METHOD\SOM2WLM100720S.M  
 Title : VOC Analysis

72	12.762	1777	1781	1789	rVB7	2330	5903	0.44%	0.069%
73	12.829	1789	1792	1796	rVB3	603	754	0.06%	0.009%
74	12.877	1796	1800	1805	rVB6	908	1109	0.08%	0.013%
75	12.932	1805	1809	1812	rBV3	5223	8763	0.66%	0.103%
76	13.079	1831	1833	1834	rBV	541	489	0.04%	0.006%
77	13.194	1843	1852	1860	rVB2	10694	21914	1.65%	0.257%
78	13.304	1864	1870	1878	rVB2	9377	17187	1.29%	0.202%
79	13.408	1879	1887	1893	rBV2	20956	39461	2.97%	0.463%
80	13.475	1896	1898	1900	rVB3	1956	1644	0.12%	0.019%
81	13.560	1906	1912	1917	rBV	296749	474371	35.66%	5.570%
82	13.767	1939	1946	1954	rBV6	7849	16929	1.27%	0.199%
83	13.853	1954	1960	1967	rBV	208709	354610	26.66%	4.163%
84	14.072	1991	1996	2008	rVB	18126	33676	2.53%	0.395%
85	14.200	2011	2017	2023	rBV6	1603	3328	0.25%	0.039%
86	14.255	2023	2026	2028	rBV3	698	965	0.07%	0.011%
87	14.304	2032	2034	2035	rBV2	982	779	0.06%	0.009%
88	14.420	2051	2053	2059	rVB6	1237	2040	0.15%	0.024%
89	14.505	2060	2067	2070	rBV6	3071	6868	0.52%	0.081%
90	14.633	2084	2088	2090	rBV5	823	1160	0.09%	0.014%
91	14.725	2100	2103	2108	rVB4	3818	4768	0.36%	0.056%
92	14.786	2111	2113	2114	rBV2	866	507	0.04%	0.006%
93	15.054	2151	2157	2158	rBV4	909	1562	0.12%	0.018%
94	15.231	2184	2186	2187	rBV2	701	583	0.04%	0.007%
95	15.322	2199	2201	2202	rBV2	741	545	0.04%	0.006%
96	15.401	2211	2214	2215	rBV2	1049	1111	0.08%	0.013%
97	15.438	2217	2220	2225	rVB3	4744	7434	0.56%	0.087%
98	15.487	2225	2228	2234	rBV6	1048	2101	0.16%	0.025%
99	16.127	2330	2333	2334	rBV3	683	777	0.06%	0.009%
100	16.462	2386	2388	2393	rVB4	737	1101	0.08%	0.013%

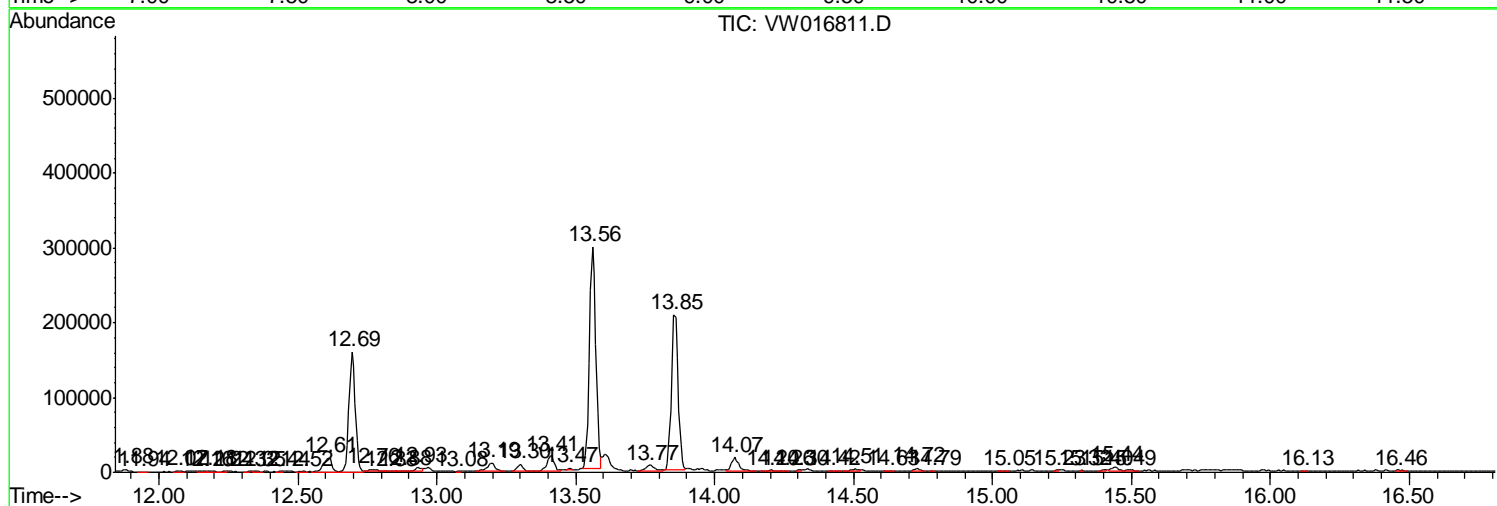
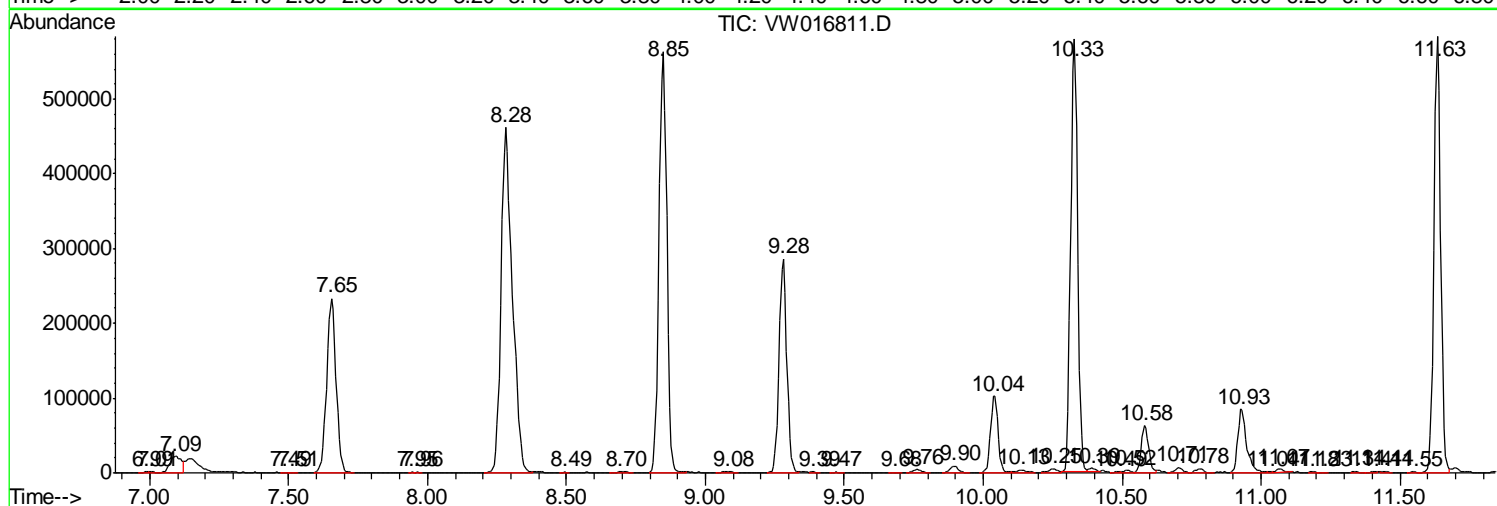
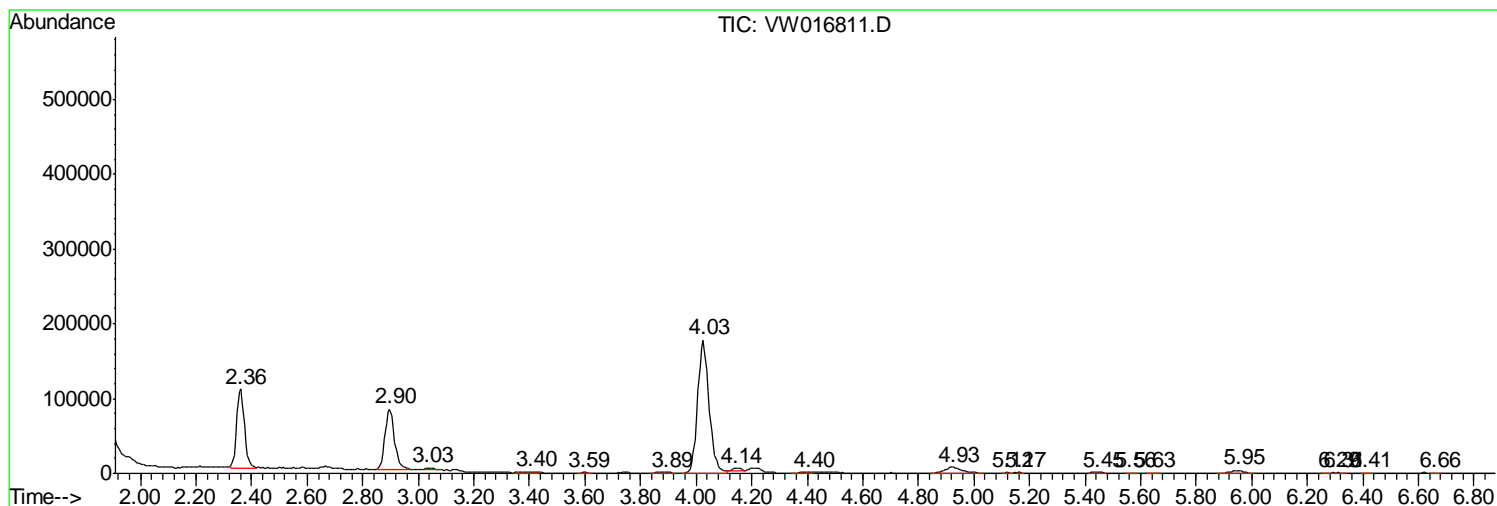
Sum of corrected areas: 8517155

Data Path : Z:\VOASRV\HPCHEM1\MSVOA W\DATA\VW100720\  
 Data File : VW016811.D  
 Acq On : 06 Oct 2020 22:42  
 Operator : SY/VA  
 Sample : L4235-17  
 Misc : 3.91G/10ML/MSVOA W/SOIL  
 ALS Vial : 1 Sample Multiplier: 1

Instrument :  
 MSVOA\_W  
 ClientSampleId :  
 C0AQ3

Quant Method : Z:\VOASRV\HPCHEM1\MSVOA\_W\METHOD\SOM2WLM100720S.M  
 Quant Title : VOC Analysis

TIC Library : C:\DATABASE\NIST11.L  
 TIC Integration Parameters: LSCINT.P



Data Path : Z:\VOASRV\HPCHEM1\MSVOA W\DATA\VW100720\  
 Data File : VW016811.D  
 Acq On : 06 Oct 2020 22:42  
 Operator : SY/VA  
 Sample : L4235-17  
 Misc : 3.91G/10ML/MSVOA W/SOIL  
 ALS Vial : 1 Sample Multiplier: 1

Instrument :  
 MSVOA\_W  
 ClientSampleID :  
 C0AQ3

Quant Method : Z:\VOASRV\HPCHEM1\MSVOA\_W\METHOD\SOM2WLM100720S.M  
 Quant Title : VOC Analysis

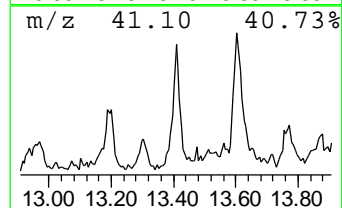
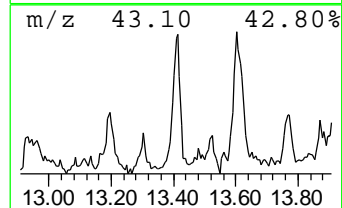
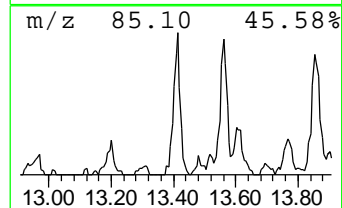
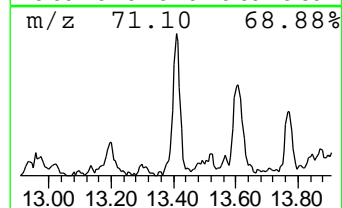
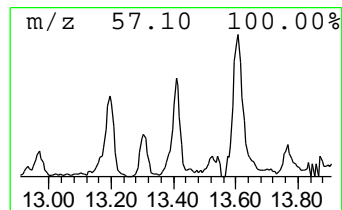
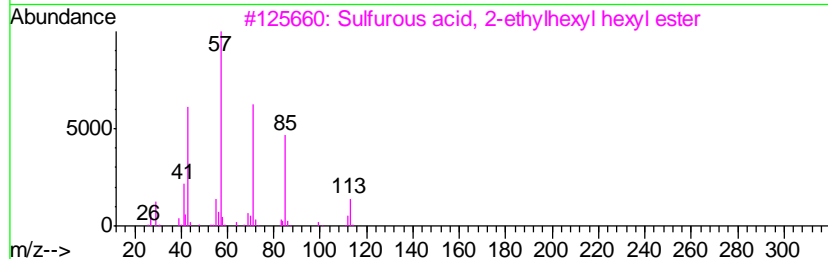
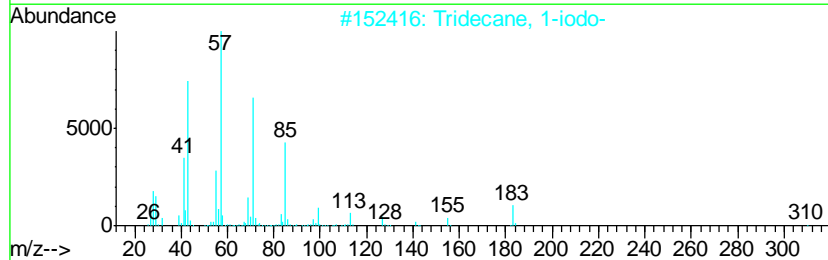
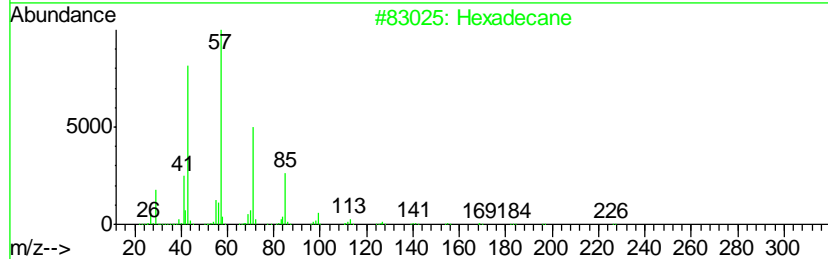
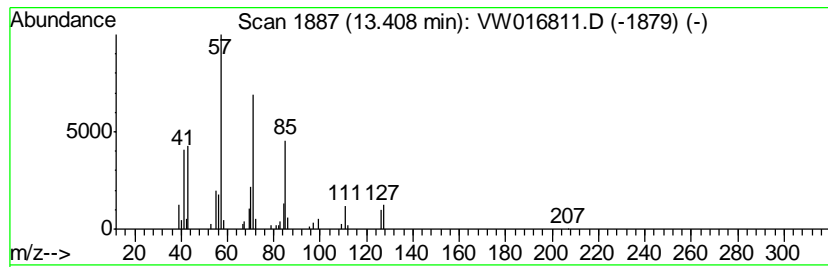
TIC Library : C:\DATABASE\NIST11.L  
 TIC Integration Parameters: LSCINT.P

\*\*\*\*\*  
 Peak Number 3 (DEL) Alkane: Straight-Chai... Concentration Rank 2

R.T.	EstConc	Area	Relative to ISTD	R.T.
13.41	2.08 ug/L	39461	1,4-Dichlorobenzene-d4	13.56

Hit#	of	Tentative ID	MW	MolForm	CAS#	Qual
1	5	Hexadecane	226	C16H34	000544-76-3	53
2		Tridecane, 1-iodo-	310	C13H27I	035599-77-0	53
3		Sulfurous acid, 2-ethylhexyl hex...	278	C14H30O3S	1000309-20-2	50
4		Dodecane, 2,6,10-trimethyl-	212	C15H32	003891-98-3	50
5		Sulfurous acid, hexyl 2-pentyl e...	236	C11H24O3S	1000309-15-6	50



Data Path : Z:\VOASRV\HPCHEM1\MSVOA\_W\DATA\VW100720\  
Data File : VW016811.D  
Acq On : 06 Oct 2020 22:42  
Operator : SY/VA  
Sample : L4235-17  
Misc : 3.91G/10ML/MSVOA\_W/SOIL  
ALS Vial : 1 Sample Multiplier: 1

Instrument :  
MSVOA\_W  
ClientSampleId :  
C0AQ3

Quant Method : Z:\VOASRV\HPCHEM1\MSVOA\_W\METHOD\SOM2WLM100720S.M  
Quant Title : VOC Analysis

TIC Library : C:\DATABASE\NIST11.L  
TIC Integration Parameters: LSCINT.P

TIC Top Hit name	RT	EstConc	Units	Response	--Internal Standard--			
					#	RT	Resp	Conc
(DEL) Alkane: Str...	13.41	2.1	ug/L	39461	3	13.56	474371	25.0