

Data Path : Z:\voasrv\HPCHEM1\MSVOA_W\Data\VW100821\
 Data File : VW020400.D
 Acq On : 08 Oct 2021 10:44
 Operator : SY/VA
 Sample : VSTD00577
 Misc : 5.00g/10mL/MSVOA_W/SOIL
 ALS Vial : 1 Sample Multiplier: 1

Instrument :
 MSVOA_W
 ClientSampled :

Quant Time: Oct 08 11:45:15 2021
 Quant Method : Z:\voasrv\HPCHEM1\MSVOA_W\Method\SFAMWLM100821SMA.M
 Quant Title : SFAM01.0
 QLast Update : Fri Oct 08 11:43:52 2021
 Response via : Initial Calibration

Compound	R.T.	QIon	Response	Conc	Units	Dev(Min)	
Internal Standards							
1) 1,4-Difluorobenzene	8.848	114	214351	25.000	ug/L	0.00	
28) Chlorobenzene-d5	11.634	117	192004	25.000	ug/L	0.00	
58) 1,4-Dichlorobenzene-d4	13.554	152	95395	25.000	ug/L	0.00	
System Monitoring Compounds							
4) Vinyl Chloride-d3	2.349	65	16558	5.613	ug/L	0.00	
7) Chloroethane-d5	2.879	69	8174	6.210	ug/L	0.00	
11) 1,1-Dichloroethene-d2	4.019	63	32679	5.350	ug/L	0.00	
21) 2-Butanone-d5	7.086	46	8363	10.425	ug/L	0.00	
24) Chloroform-d	7.653	84	35025	5.591	ug/L	0.00	
26) 1,2-Dichloroethane-d4	8.311	65	19886	5.699	ug/L	0.00	
32) Benzene-d6	8.275	84	65782	5.581	ug/L	0.00	
36) 1,2-Dichloropropane-d6	9.275	67	21347	5.678	ug/L	0.00	
41) Toluene-d8	10.323	98	58280	5.463	ug/L	0.00	
43) trans-1,3-Dichloroprop...	10.579	79	7981	5.193	ug/L	0.00	
47) 2-Hexanone-d5	10.927	63	5275	9.720	ug/L	0.00	
56) 1,1,2,2-Tetrachloroeth...	12.695	84	15973	5.904	ug/L	0.00	
66) 1,2-Dichlorobenzene-d4	13.853	152	19370	5.654	ug/L	0.00	
Target Compounds							
							Qvalue
2) Dichlorodifluoromethane	2.008	85	5792	4.778	ug/L		98
3) Chloromethane	2.209	50	15255	5.297	ug/L		99
5) Vinyl chloride	2.361	62	21585	5.450	ug/L		94
6) Bromomethane	2.776	94	9219	5.827	ug/L		95
8) Chloroethane	2.916	64	7387	6.076	ug/L		98
9) Trichlorofluoromethane	3.251	101	11624	5.558	ug/L		98
10) 1,1,2-Trichloro-1,2,2-...	4.056	101	17217	5.362	ug/L		99
12) 1,1-Dichloroethene	4.044	96	14846	4.921	ug/L		94
13) Acetone	4.129	43	7206	8.889	ug/L		78
14) Carbon disulfide	4.379	76	50448	5.108	ug/L		98
15) Methyl Acetate	4.678	43	7759	5.179	ug/L		96
16) Methylene chloride	4.922	84	24469	6.206	ug/L		95
17) trans-1,2-Dichloroethene	5.428	96	15674	4.951	ug/L		99
18) Methyl tert-butyl Ether	5.434	73	20196	4.803	ug/L		98
19) 1,1-Dichloroethane	6.226	63	32550	5.133	ug/L		99
20) cis-1,2-Dichloroethene	7.171	96	15584	4.785	ug/L		96
22) 2-Butanone	7.183	43	9080	8.979	ug/L		97
23) Bromochloromethane	7.519	128	7134	5.118	ug/L		98
25) Chloroform	7.677	83	32182	5.303	ug/L		92
27) 1,2-Dichloroethane	8.403	62	21581	5.247	ug/L		100
29) Cyclohexane	7.958	56	26337	4.557	ug/L		99
30) 1,1,1-Trichloroethane	7.872	97	25209	5.402	ug/L		98
31) Carbon tetrachloride	8.074	117	21875	5.358	ug/L		99
33) Benzene	8.330	78	73139	5.413	ug/L		100
34) Trichloroethene	9.098	95	17381	5.221	ug/L		97
35) Methylcyclohexane	9.342	83	28290	4.856	ug/L		97
37) 1,2-Dichloropropane	9.372	63	18685	5.499	ug/L	#	94
38) Bromodichloromethane	9.646	83	21732	5.271	ug/L		99
39) cis-1,3-Dichloropropene	10.073	75	22636	4.716	ug/L		99
40) 4-Methyl-2-pentanone	10.213	43	18513	9.540	ug/L		97
42) Toluene	10.390	91	70294	5.161	ug/L		94
44) trans-1,3-Dichloropropene	10.610	75	20352	4.853	ug/L		100

Data Path : Z:\voasrv\HPCHEM1\MSVOA_W\Data\VW100821\
 Data File : VW020400.D
 Acq On : 08 Oct 2021 10:44
 Operator : SY/VA
 Sample : VSTD00577
 Misc : 5.00g/10mL/MSVOA_W/SOIL
 ALS Vial : 1 Sample Multiplier: 1

Instrument :
 MSVOA_W
 ClientSampleId :

Quant Time: Oct 08 11:45:15 2021
 Quant Method : Z:\voasrv\HPCHEM1\MSVOA_W\Method\SFAMWLM100821SMA.M
 Quant Title : SFAM01.0
 QLast Update : Fri Oct 08 11:43:52 2021
 Response via : Initial Calibration

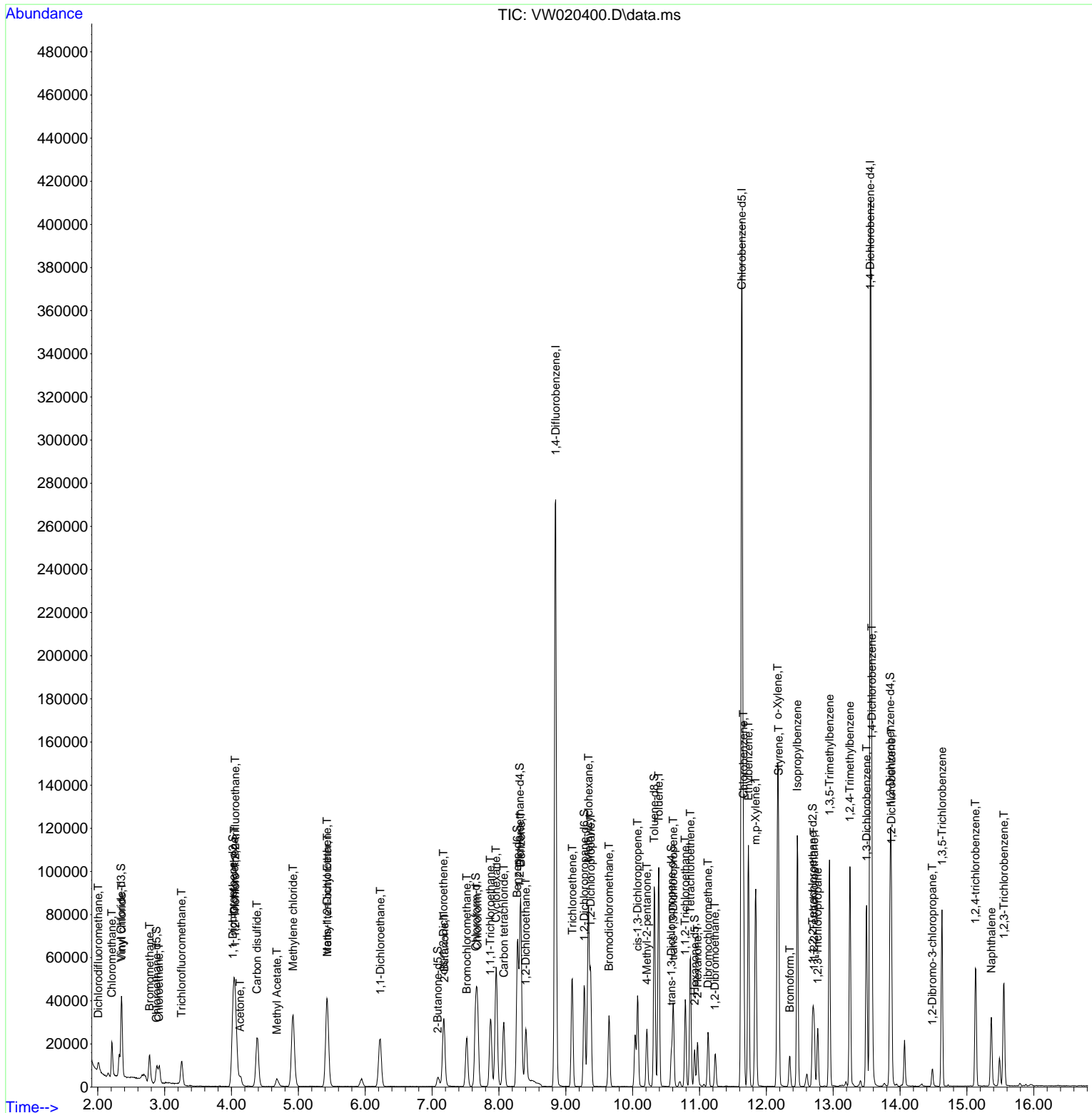
Compound	R.T.	QIon	Response	Conc	Units	Dev(Min)
45) 1,1,2-Trichloroethane	10.786	97	11876	5.439	ug/L	99
46) Tetrachloroethene	10.866	164	12469	5.097	ug/L	93
48) 2-Hexanone	10.969	43	13556	9.551	ug/L	97
49) Dibromochloromethane	11.128	129	12330	5.068	ug/L	99
50) 1,2-Dibromoethane	11.232	107	10472	5.213	ug/L	99
51) Chlorobenzene	11.658	112	43729	5.274	ug/L	96
52) Ethylbenzene	11.731	91	74040	4.963	ug/L	98
53) m,p-Xylene	11.841	106	27511	5.002	ug/L	97
54) o-Xylene	12.170	106	24862	4.824	ug/L	97
55) Styrene	12.183	104	43769	4.947	ug/L	97
57) 1,1,2,2-Tetrachloroethane	12.713	83	14203	5.416	ug/L	97
59) Bromoform	12.353	173	6441	4.906	ug/L	99
60) Isopropylbenzene	12.463	105	68122	4.729	ug/L	99
61) 1,2,3-Trichloropropane	12.768	75	10562	5.325	ug/L	97
62) 1,3,5-Trimethylbenzene	12.945	105	53145	4.565	ug/L	99
63) 1,2,4-Trimethylbenzene	13.249	105	52792	4.528	ug/L	100
64) 1,3-Dichlorobenzene	13.499	146	31662	5.219	ug/L	98
65) 1,4-Dichlorobenzene	13.579	146	33810	5.503	ug/L	94
67) 1,2-Dichlorobenzene	13.871	146	28950	5.325	ug/L	97
68) 1,2-Dibromo-3-chloropr...	14.481	75	2152	5.077	ug/L #	80
69) 1,3,5-Trichlorobenzene	14.627	180	22714	5.278	ug/L	96
70) 1,2,4-trichlorobenzene	15.127	180	16802	4.956	ug/L	99
71) Naphthalene	15.365	128	25680	4.292	ug/L	99
72) 1,2,3-Trichlorobenzene	15.554	180	14981	5.060	ug/L	96

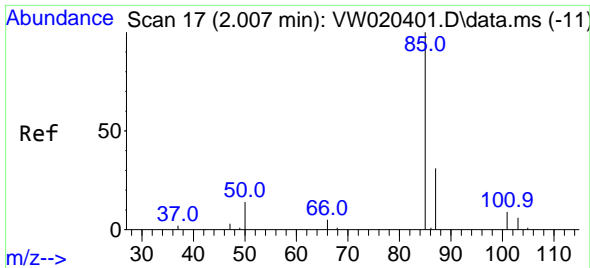
(#) = qualifier out of range (m) = manual integration (+) = signals summed

Data Path : Z:\voasrv\HPCHEM1\MSVOA_W\Data\VW100821\
 Data File : VW020400.D
 Acq On : 08 Oct 2021 10:44
 Operator : SY/VA
 Sample : VSTD00577
 Misc : 5.00g/10mL/MSVOA_W/SOIL
 ALS Vial : 1 Sample Multiplier: 1

Instrument :
 MSVOA_W
 Client Sampled :

Quant Time: Oct 08 11:45:15 2021
 Quant Method : Z:\voasrv\HPCHEM1\MSVOA_W\Method\SFAMWLM100821SMA.M
 Quant Title : SFAM01.0
 QLast Update : Fri Oct 08 11:43:52 2021
 Response via : Initial Calibration

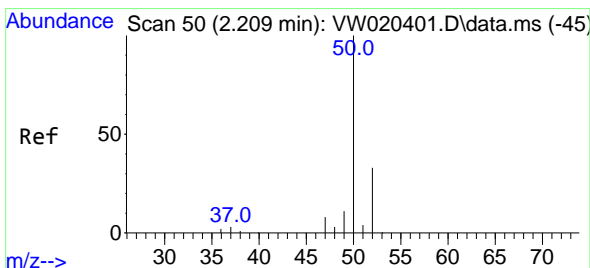
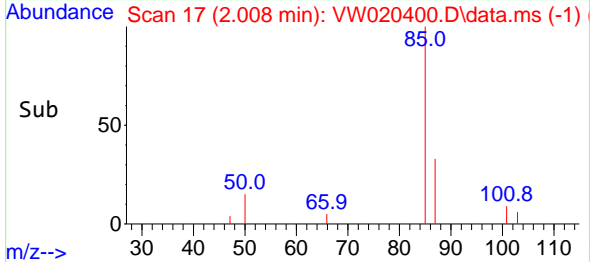
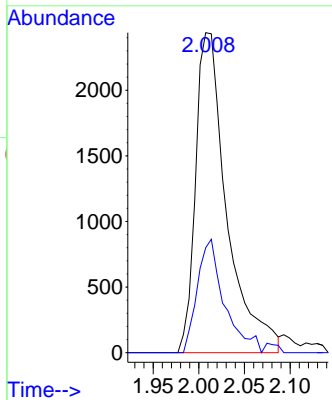
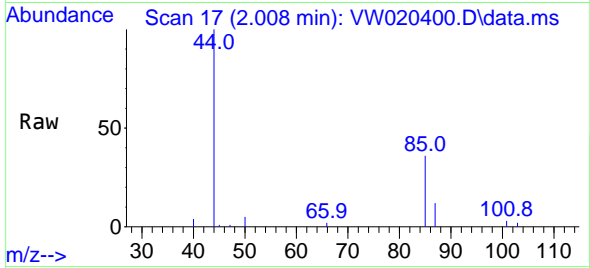




#2
 Dichlorodifluoromethane
 Concen: 4.778 ug/L
 RT: 2.008 min Scan# 17
 Delta R.T. 0.000 min
 Lab File: VW020400.D
 Acq: 08 Oct 2021 10:44

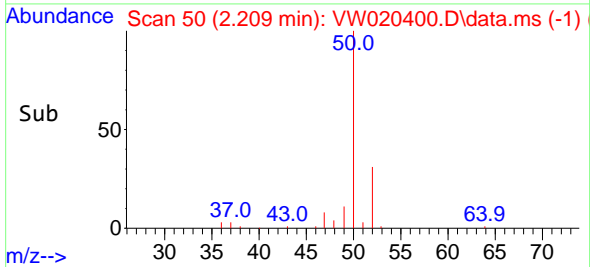
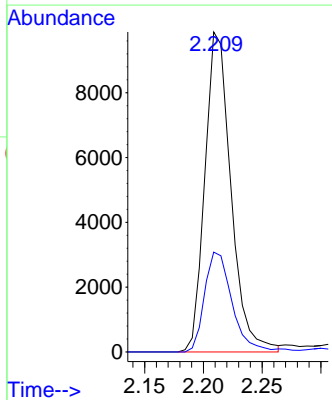
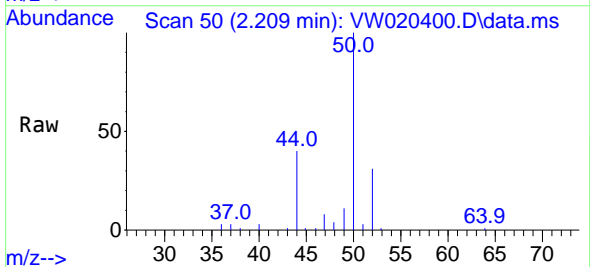
Instrument :
 MSVOA_W
 ClientSampled :

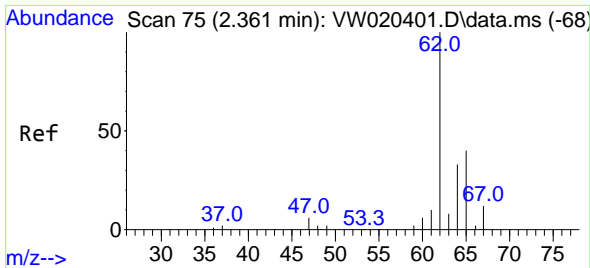
Tgt Ion: 85 Resp: 5792
 Ion Ratio Lower Upper
 85 100
 87 29.8 24.9 37.3



#3
 Chloromethane
 Concen: 5.297 ug/L
 RT: 2.209 min Scan# 50
 Delta R.T. 0.000 min
 Lab File: VW020400.D
 Acq: 08 Oct 2021 10:44

Tgt Ion: 50 Resp: 15255
 Ion Ratio Lower Upper
 50 100
 52 31.2 21.5 39.9

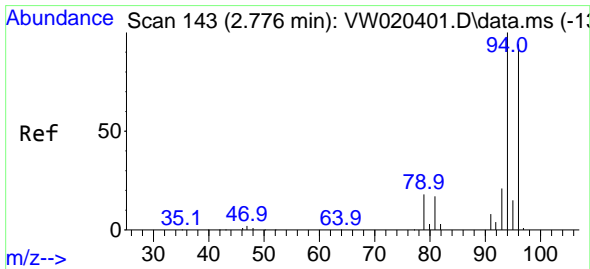
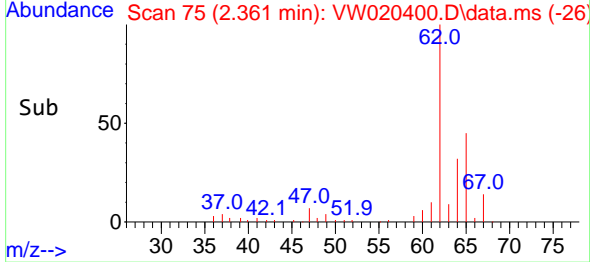
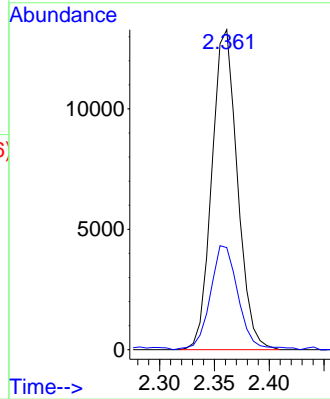
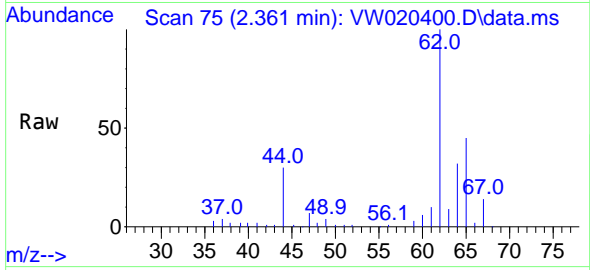




#5
 Vinyl chloride
 Concen: 5.450 ug/L
 RT: 2.361 min Scan# 75
 Delta R.T. 0.000 min
 Lab File: VW020400.D
 Acq: 08 Oct 2021 10:44

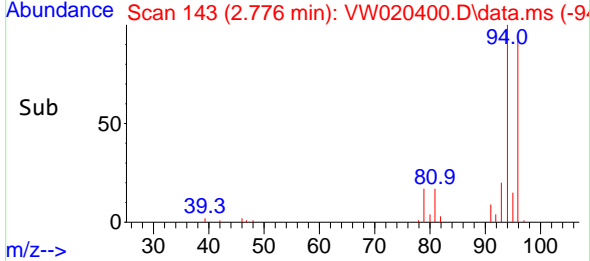
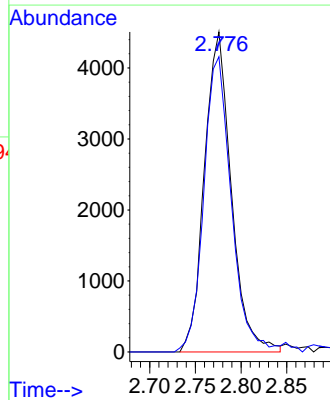
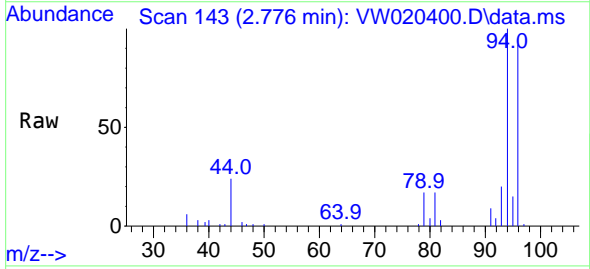
Instrument :
 MSVOA_W
 ClientSampled :

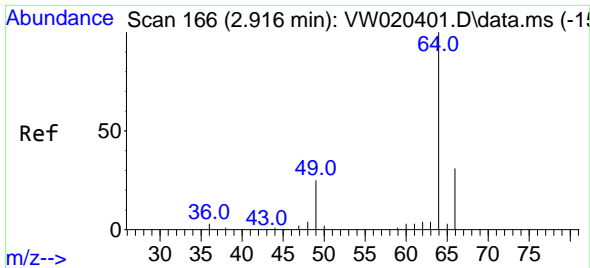
Tgt Ion: 62 Resp: 21585
 Ion Ratio Lower Upper
 62 100
 64 31.9 24.6 45.6



#6
 Bromomethane
 Concen: 5.827 ug/L
 RT: 2.776 min Scan# 143
 Delta R.T. 0.000 min
 Lab File: VW020400.D
 Acq: 08 Oct 2021 10:44

Tgt Ion: 94 Resp: 9219
 Ion Ratio Lower Upper
 94 100
 96 92.3 67.8 126.0

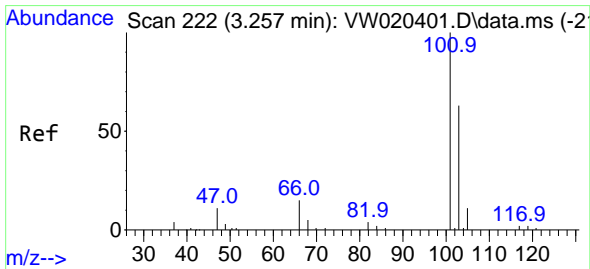
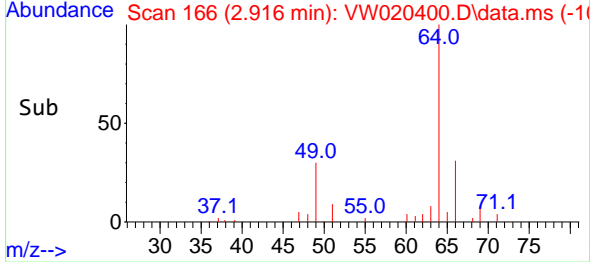
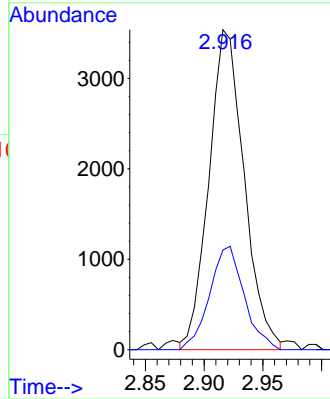
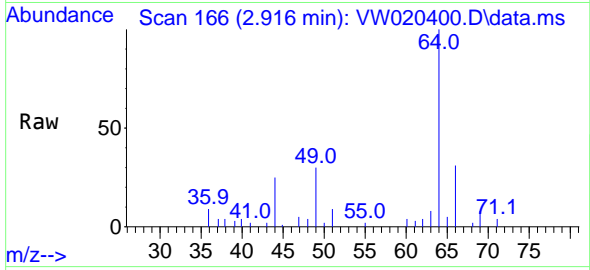




#8
 Chloroethane
 Concen: 6.076 ug/L
 RT: 2.916 min Scan# 166
 Delta R.T. 0.000 min
 Lab File: VW020400.D
 Acq: 08 Oct 2021 10:44

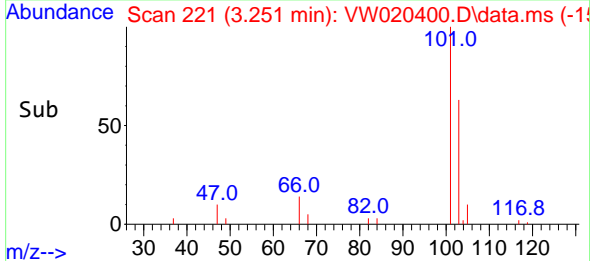
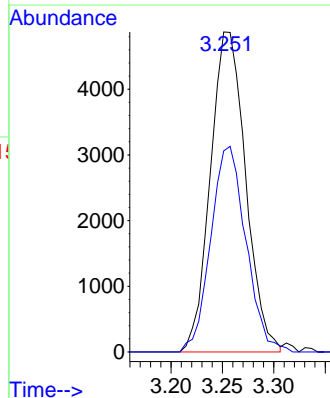
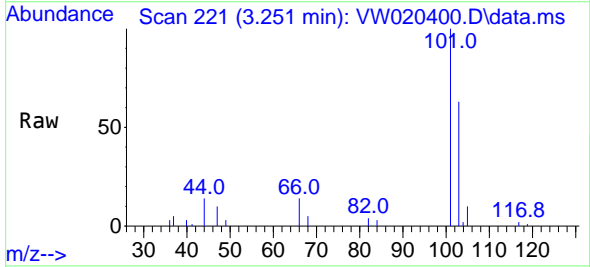
Instrument :
 MSVOA_W
 ClientSampled :

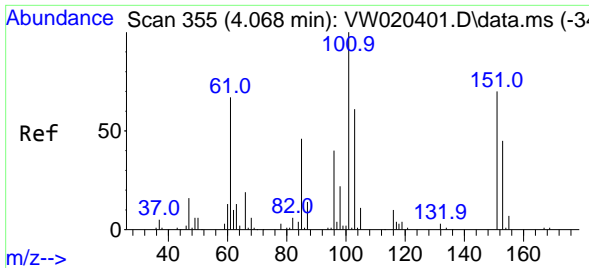
Tgt Ion: 64 Resp: 7387
 Ion Ratio Lower Upper
 64 100
 66 31.1 21.2 39.4



#9
 Trichlorofluoromethane
 Concen: 5.558 ug/L
 RT: 3.251 min Scan# 221
 Delta R.T. -0.006 min
 Lab File: VW020400.D
 Acq: 08 Oct 2021 10:44

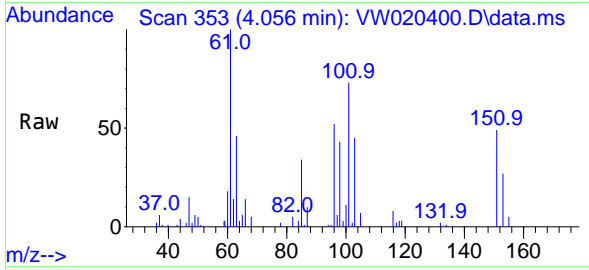
Tgt Ion: 101 Resp: 11624
 Ion Ratio Lower Upper
 101 100
 103 64.0 52.2 78.4



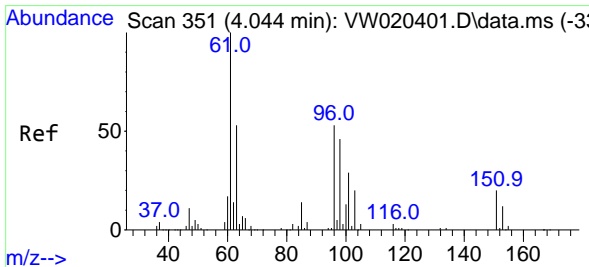
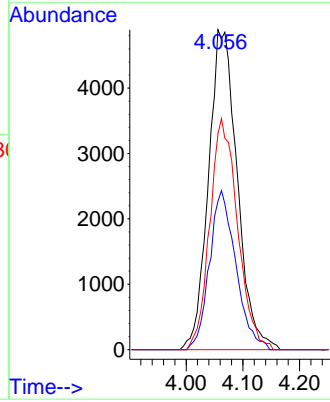
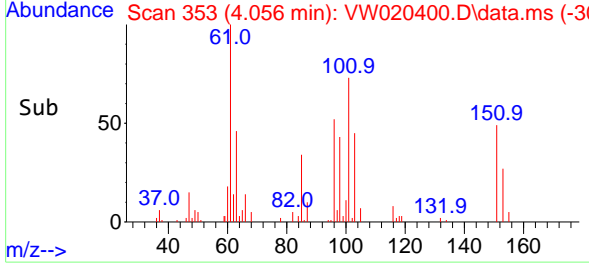


#10
 1,1,2-Trichloro-1,2,2-trifluoroethane
 Concen: 5.362 ug/L
 RT: 4.056 min Scan# 353
 Delta R.T. -0.012 min
 Lab File: VW020400.D
 Acq: 08 Oct 2021 10:44

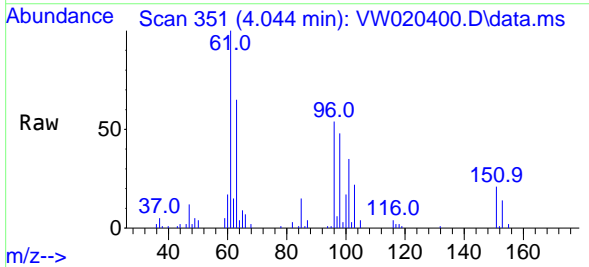
Instrument :
 MSVOA_W
 ClientSampled :



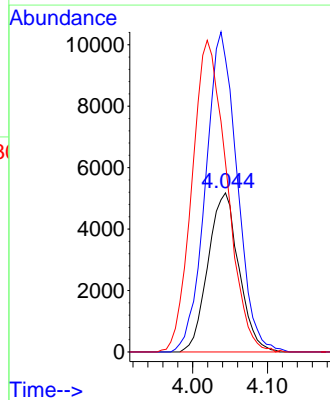
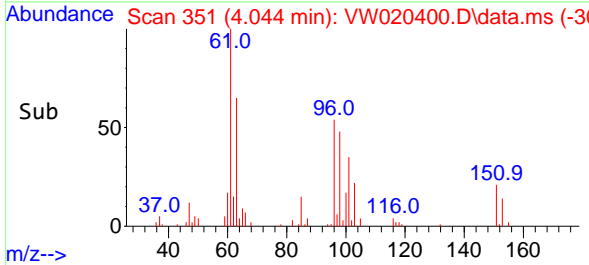
Tgt Ion:101 Resp: 17217
 Ion Ratio Lower Upper
 101 100
 85 45.7 36.3 54.5
 151 69.8 56.5 84.7

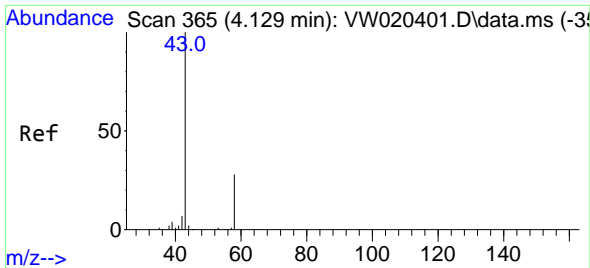


#12
 1,1-Dichloroethene
 Concen: 4.921 ug/L
 RT: 4.044 min Scan# 351
 Delta R.T. 0.000 min
 Lab File: VW020400.D
 Acq: 08 Oct 2021 10:44



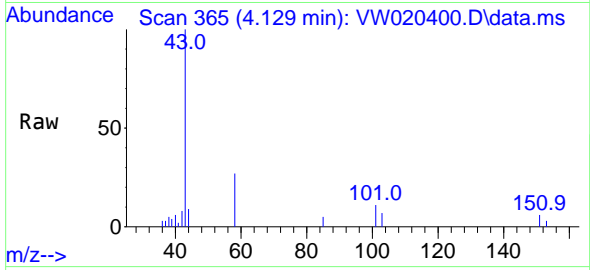
Tgt Ion: 96 Resp: 14846
 Ion Ratio Lower Upper
 96 100
 61 184.2 133.9 248.7
 63 119.0 77.3 143.7



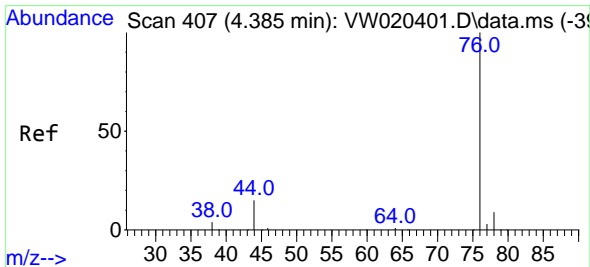
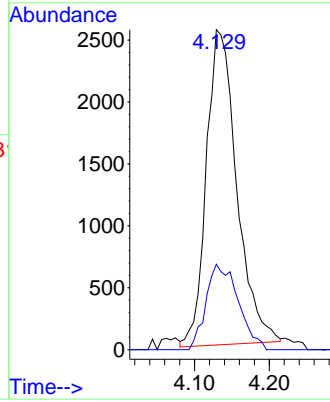
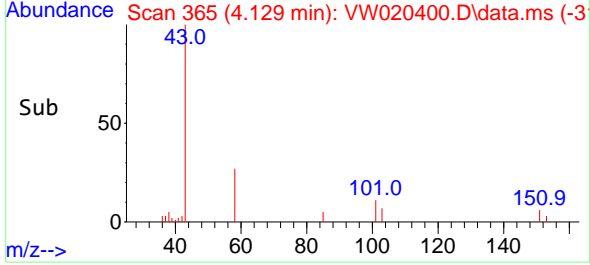


#13
 Acetone
 Concen: 8.889 ug/L
 RT: 4.129 min Scan# 365
 Delta R.T. 0.000 min
 Lab File: VW020400.D
 Acq: 08 Oct 2021 10:44

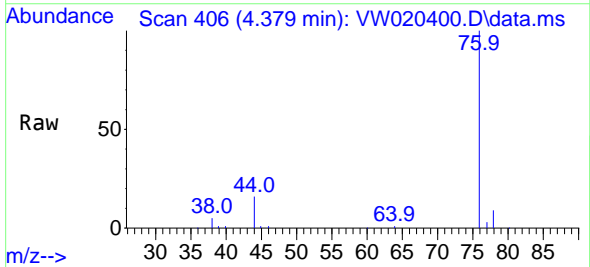
Instrument :
 MSVOA_W
 ClientSampled :



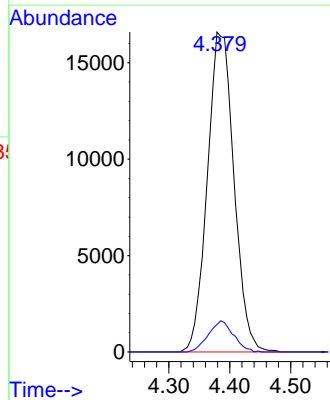
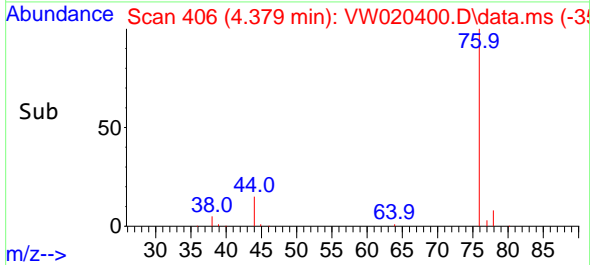
Tgt Ion: 43 Resp: 7206
 Ion Ratio Lower Upper
 43 100
 58 17.5 0.0 58.4

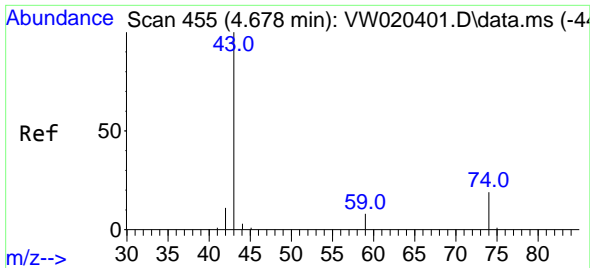


#14
 Carbon disulfide
 Concen: 5.108 ug/L
 RT: 4.379 min Scan# 406
 Delta R.T. -0.006 min
 Lab File: VW020400.D
 Acq: 08 Oct 2021 10:44



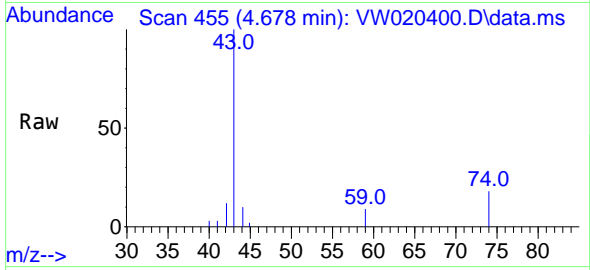
Tgt Ion: 76 Resp: 50448
 Ion Ratio Lower Upper
 76 100
 78 8.6 7.4 11.2



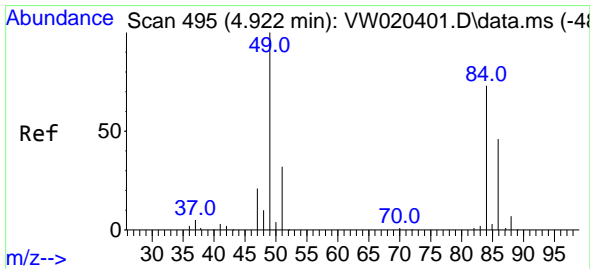
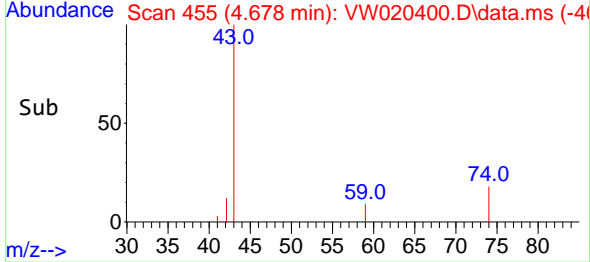
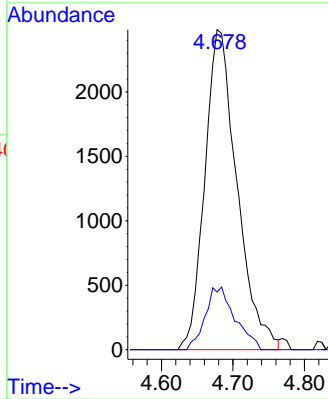


#15
 Methyl Acetate
 Concen: 5.179 ug/L
 RT: 4.678 min Scan# 455
 Delta R.T. 0.000 min
 Lab File: VW020400.D
 Acq: 08 Oct 2021 10:44

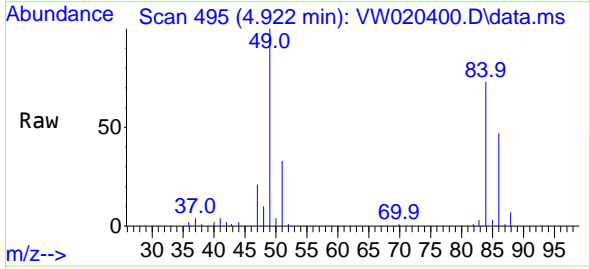
Instrument :
 MSVOA_W
 ClientSampled :



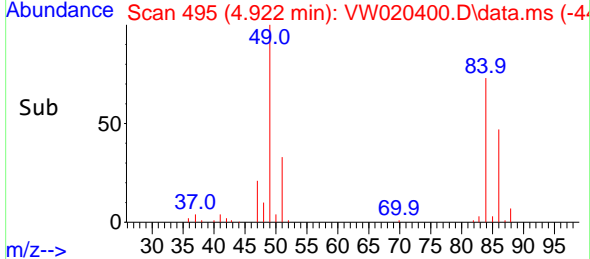
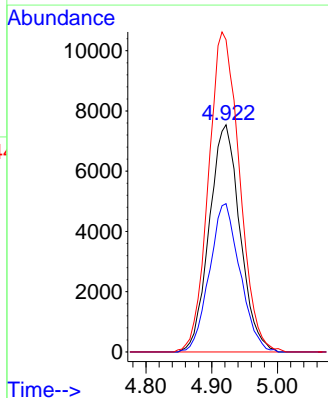
Tgt Ion: 43 Resp: 7759
 Ion Ratio Lower Upper
 43 100
 74 18.1 16.1 24.1

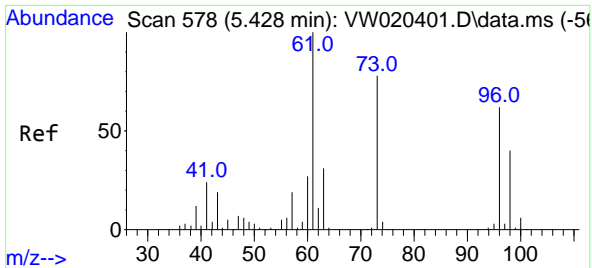


#16
 Methylene chloride
 Concen: 6.206 ug/L
 RT: 4.922 min Scan# 495
 Delta R.T. 0.000 min
 Lab File: VW020400.D
 Acq: 08 Oct 2021 10:44



Tgt Ion: 84 Resp: 24469
 Ion Ratio Lower Upper
 84 100
 86 65.2 44.7 83.1
 49 137.3 101.7 188.9



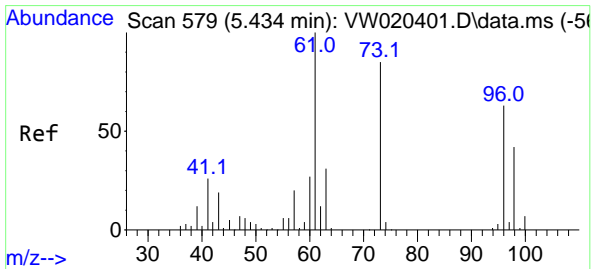
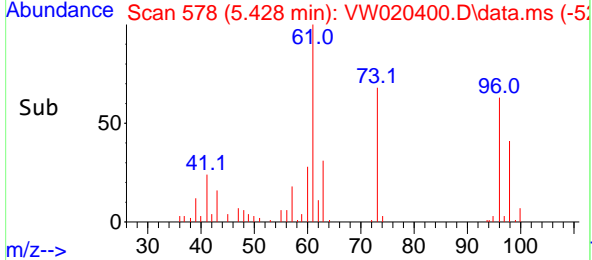
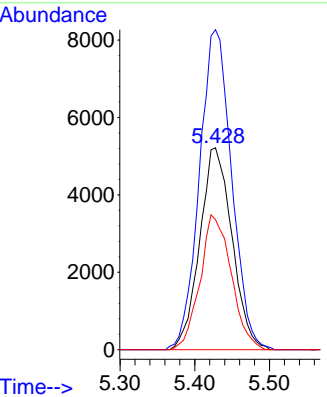
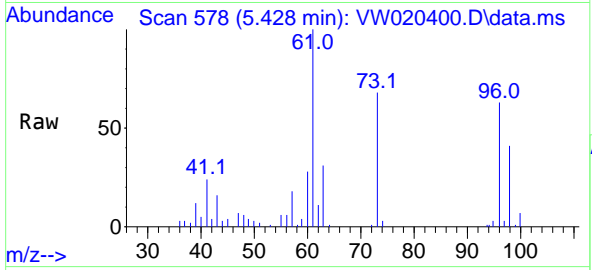


#17
 trans-1,2-Dichloroethene
 Concen: 4.951 ug/L
 RT: 5.428 min Scan# 578
 Delta R.T. 0.000 min
 Lab File: VW020400.D
 Acq: 08 Oct 2021 10:44

Instrument :
 MSVOA_W
 ClientSampled :

Tgt Ion: 96 Resp: 15674

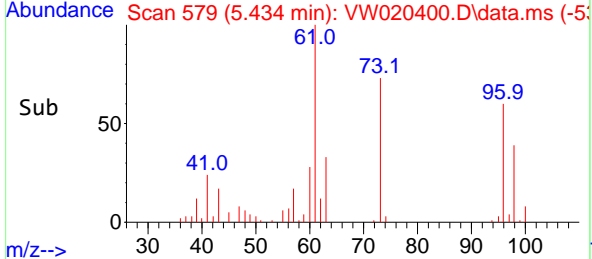
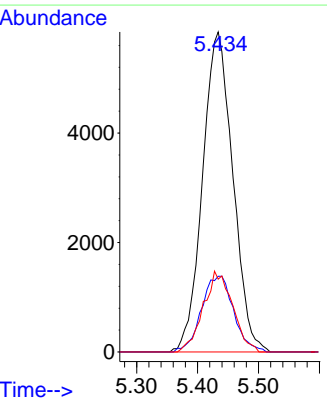
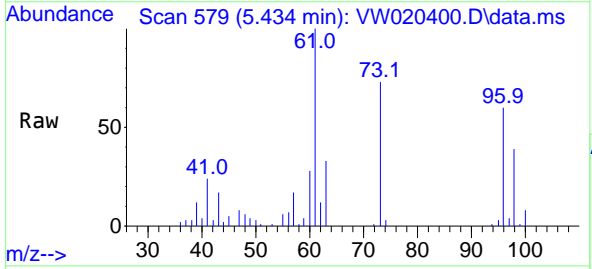
Ion	Ratio	Lower	Upper
96	100		
61	158.5	110.7	205.5
98	64.4	43.9	81.5

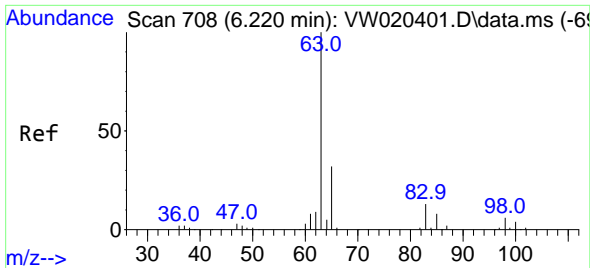


#18
 Methyl tert-butyl Ether
 Concen: 4.803 ug/L
 RT: 5.434 min Scan# 579
 Delta R.T. 0.000 min
 Lab File: VW020400.D
 Acq: 08 Oct 2021 10:44

Tgt Ion: 73 Resp: 20196

Ion	Ratio	Lower	Upper
73	100		
43	25.2	18.9	28.3
57	24.4	18.9	28.3



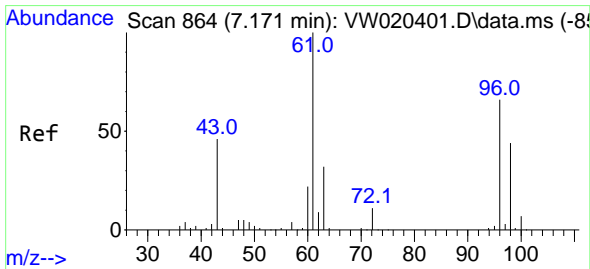
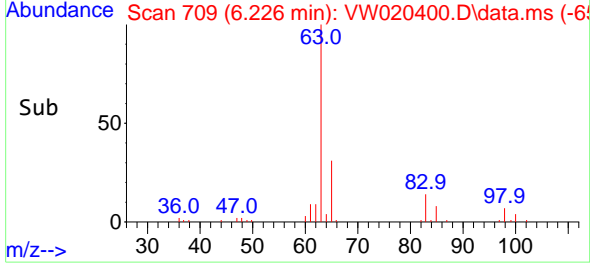
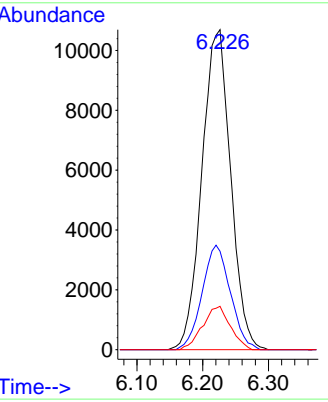
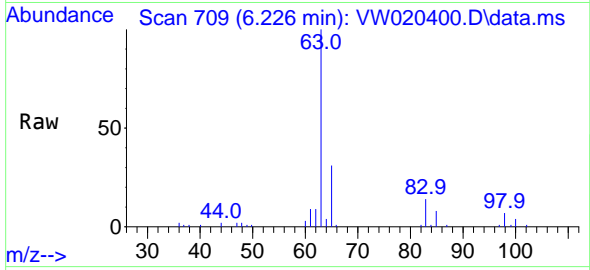


#19
 1,1-Dichloroethane
 Concen: 5.133 ug/L
 RT: 6.226 min Scan# 709
 Delta R.T. 0.006 min
 Lab File: VW020400.D
 Acq: 08 Oct 2021 10:44

Instrument :
 MSVOA_W
 ClientSampled :

Tgt Ion: 63 Resp: 32550

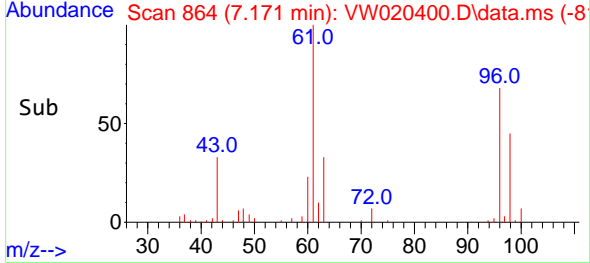
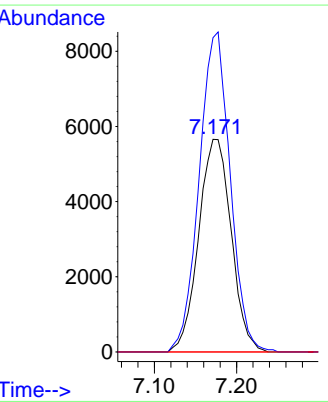
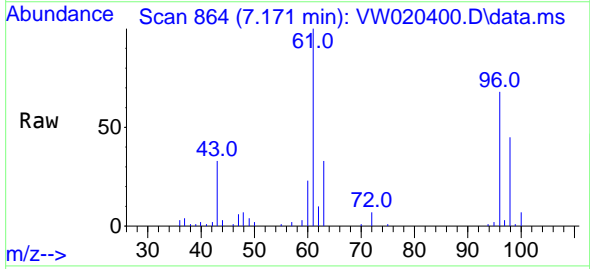
Ion	Ratio	Lower	Upper
63	100		
65	30.7	21.9	40.7
83	13.6	9.0	16.6

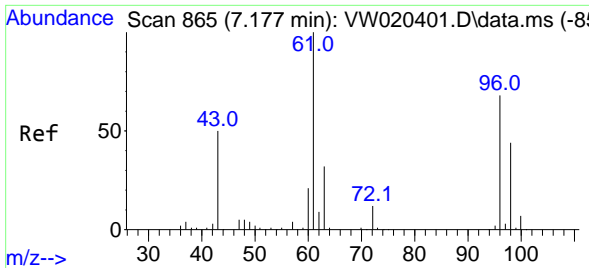


#20
 cis-1,2-Dichloroethene
 Concen: 4.785 ug/L
 RT: 7.171 min Scan# 864
 Delta R.T. 0.000 min
 Lab File: VW020400.D
 Acq: 08 Oct 2021 10:44

Tgt Ion: 96 Resp: 15584

Ion	Ratio	Lower	Upper
96	100		
61	147.8	100.3	186.3
68	0.0	0.0	0.0

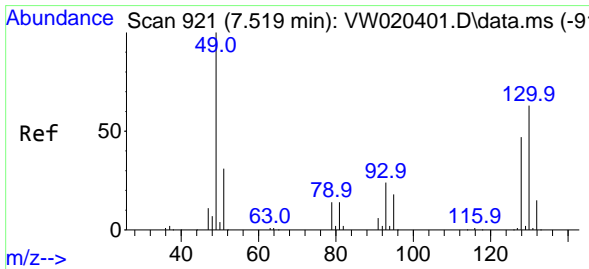
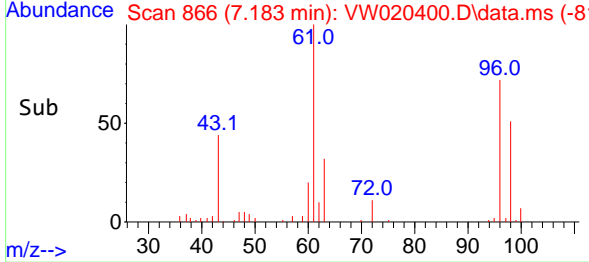
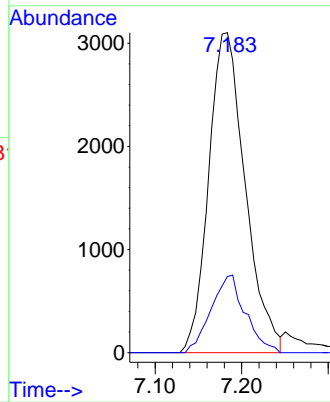
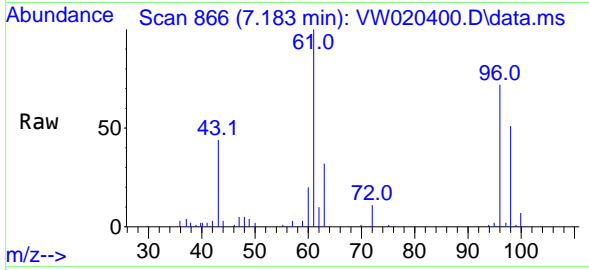




#22
 2-Butanone
 Concen: 8.979 ug/L
 RT: 7.183 min Scan# 866
 Delta R.T. 0.006 min
 Lab File: VW020400.D
 Acq: 08 Oct 2021 10:44

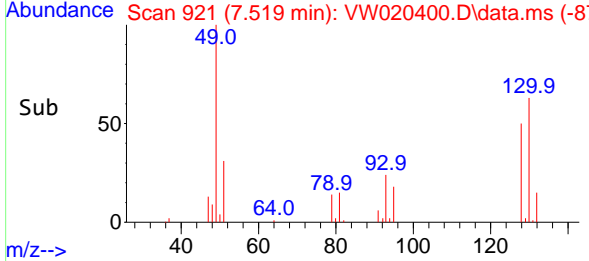
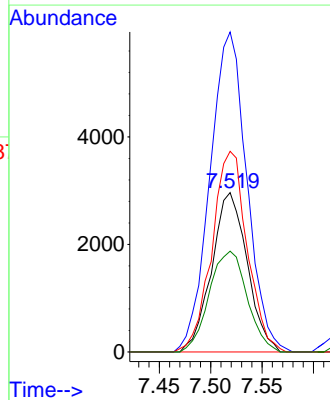
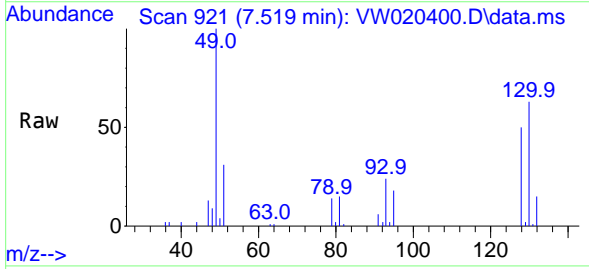
Instrument :
 MSVOA_W
 ClientSampled :

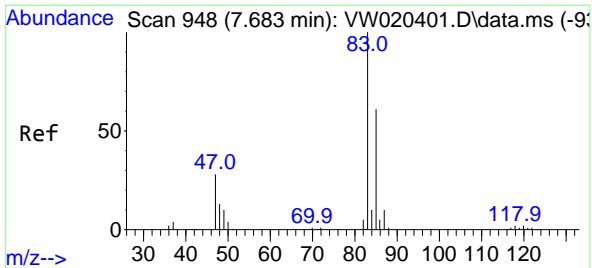
Tgt Ion	Resp	Lower	Upper
43	100		
72	22.8	12.2	36.6



#23
 Bromochloromethane
 Concen: 5.118 ug/L
 RT: 7.519 min Scan# 921
 Delta R.T. 0.000 min
 Lab File: VW020400.D
 Acq: 08 Oct 2021 10:44

Tgt Ion	Resp	Lower	Upper
128	100		
49	200.8	144.1	267.7
130	125.8	89.2	165.6
51	63.2	51.8	77.8

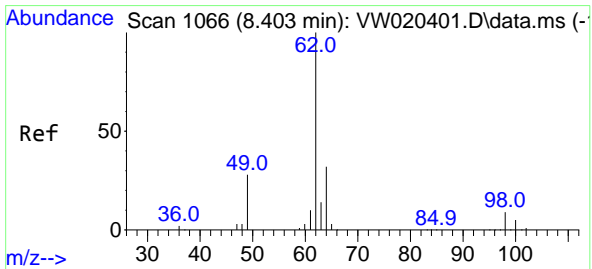
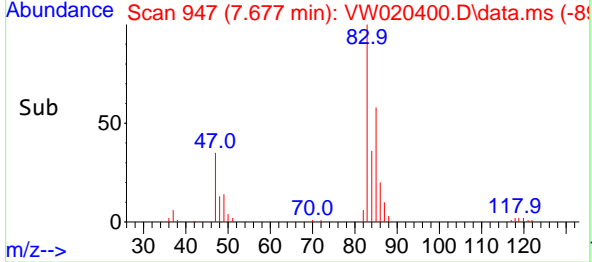
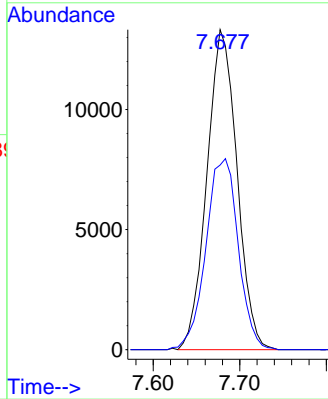
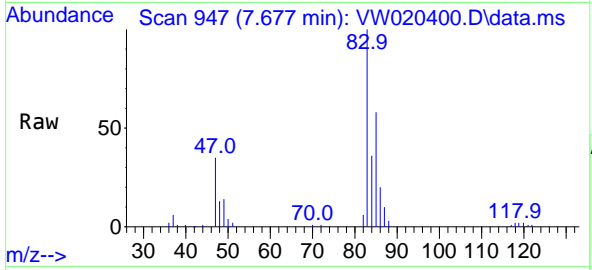




#25
 Chloroform
 Concen: 5.303 ug/L
 RT: 7.677 min Scan# 947
 Delta R.T. -0.006 min
 Lab File: VW020400.D
 Acq: 08 Oct 2021 10:44

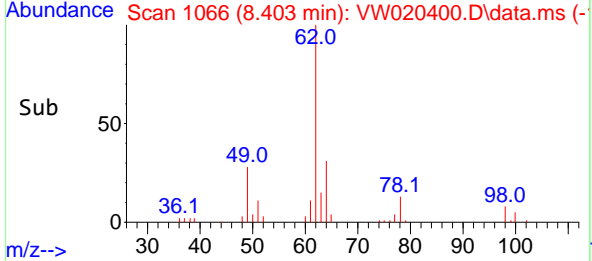
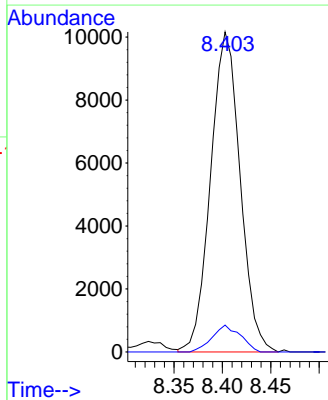
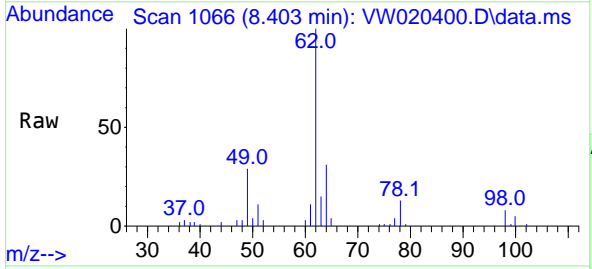
Instrument :
 MSVOA_W
ClientSampled :

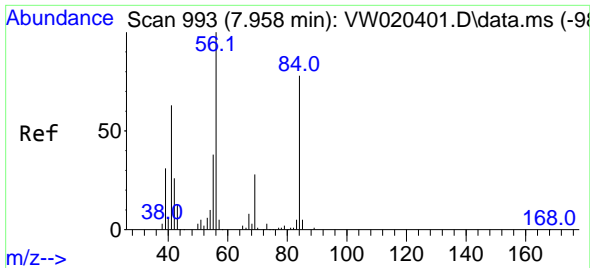
Tgt Ion: 83 Resp: 32182
 Ion Ratio Lower Upper
 83 100
 85 57.7 44.6 82.8



#27
 1,2-Dichloroethane
 Concen: 5.247 ug/L
 RT: 8.403 min Scan# 1066
 Delta R.T. 0.000 min
 Lab File: VW020400.D
 Acq: 08 Oct 2021 10:44

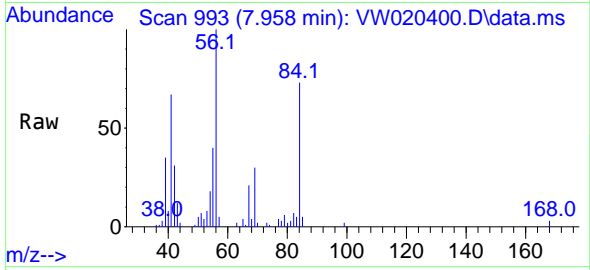
Tgt Ion: 62 Resp: 21581
 Ion Ratio Lower Upper
 62 100
 98 8.4 6.6 10.0



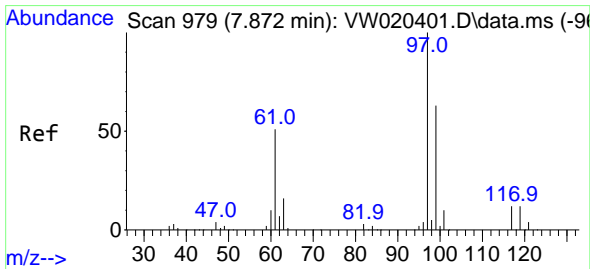
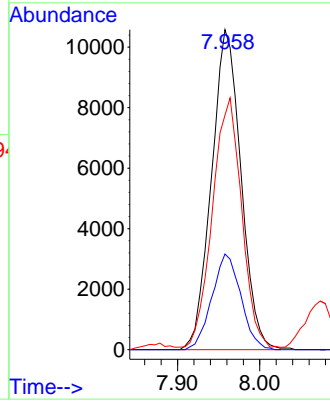
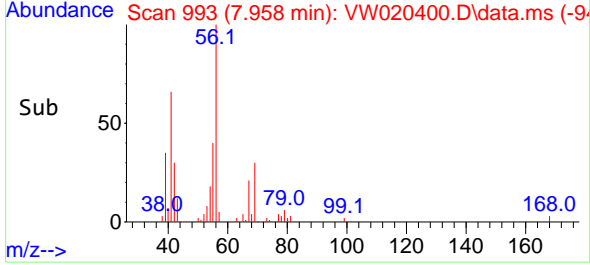


#29
 Cyclohexane
 Concen: 4.557 ug/L
 RT: 7.958 min Scan# 993
 Delta R.T. 0.000 min
 Lab File: VW020400.D
 Acq: 08 Oct 2021 10:44

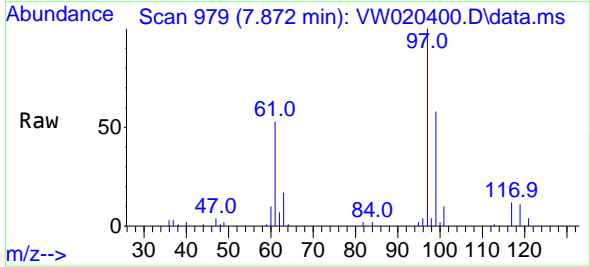
Instrument :
 MSVOA_W
 ClientSampled :



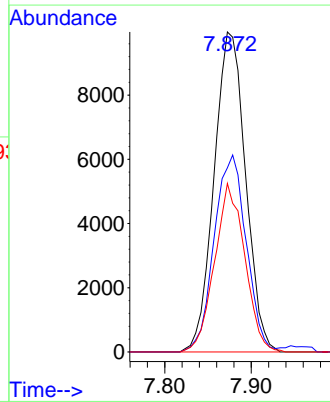
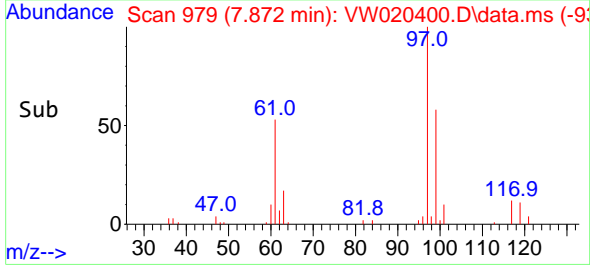
Tgt Ion: 56 Resp: 26337
 Ion Ratio Lower Upper
 56 100
 69 29.3 23.2 34.8
 84 78.6 63.7 95.5

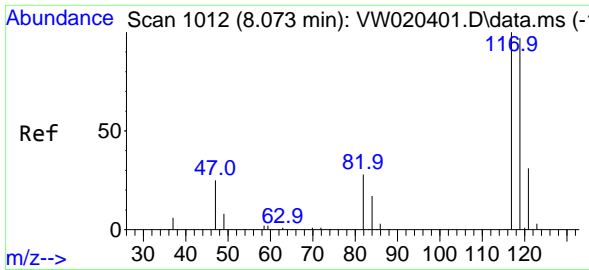


#30
 1,1,1-Trichloroethane
 Concen: 5.402 ug/L
 RT: 7.872 min Scan# 979
 Delta R.T. 0.000 min
 Lab File: VW020400.D
 Acq: 08 Oct 2021 10:44



Tgt Ion: 97 Resp: 25209
 Ion Ratio Lower Upper
 97 100
 99 62.6 51.4 77.0
 61 50.4 41.0 61.6

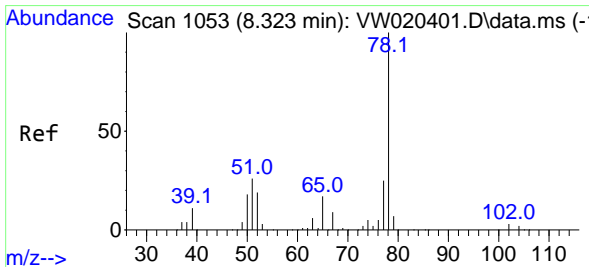
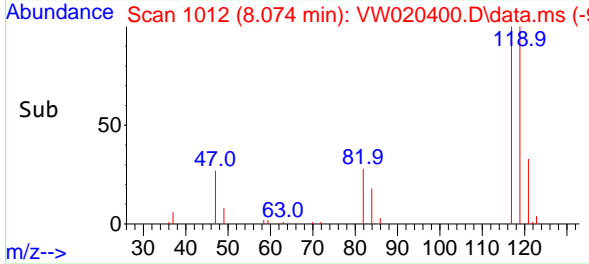
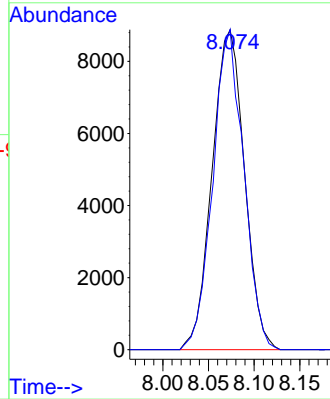
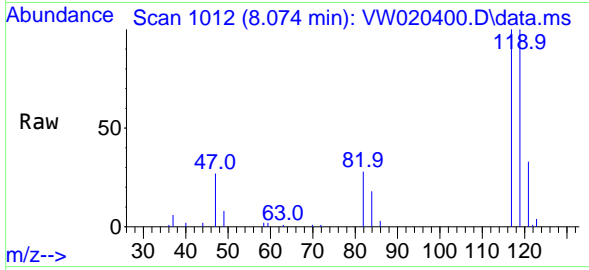




#31
 Carbon tetrachloride
 Concen: 5.358 ug/L
 RT: 8.074 min Scan# 1012
 Delta R.T. 0.000 min
 Lab File: VW020400.D
 Acq: 08 Oct 2021 10:44

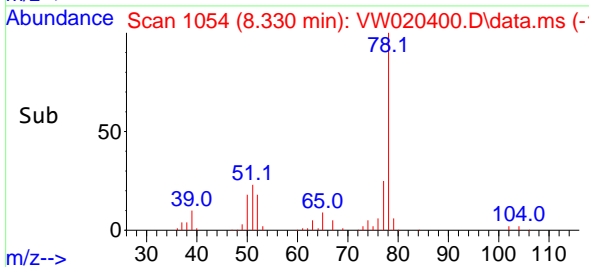
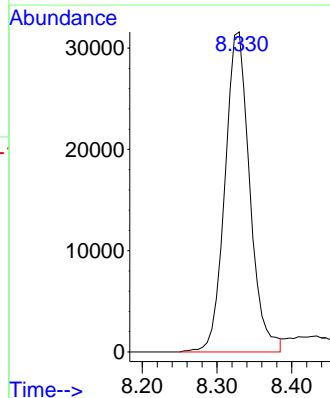
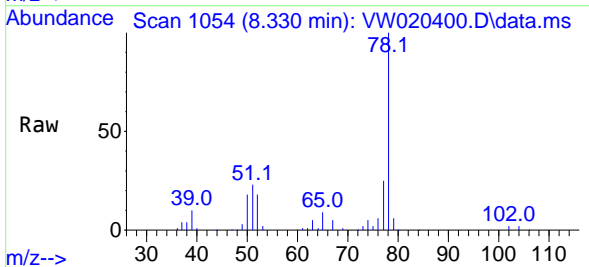
Instrument :
 MSVOA_W
 ClientSampled :

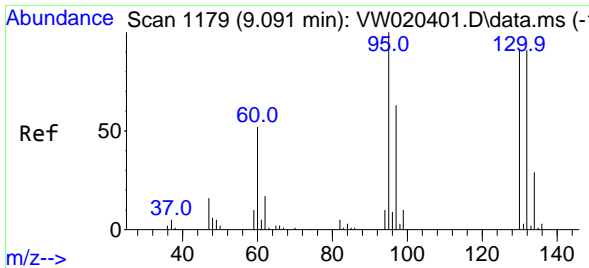
Tgt Ion:117 Resp: 21875
 Ion Ratio Lower Upper
 117 100
 119 95.5 77.0 115.4



#33
 Benzene
 Concen: 5.413 ug/L
 RT: 8.330 min Scan# 1054
 Delta R.T. 0.006 min
 Lab File: VW020400.D
 Acq: 08 Oct 2021 10:44

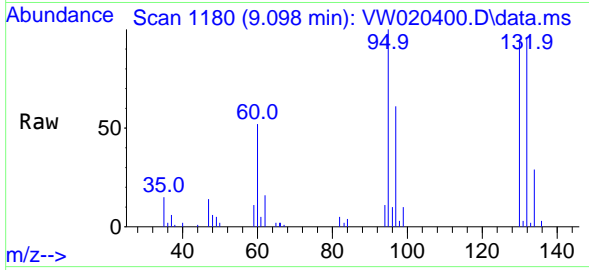
Tgt Ion: 78 Resp: 73139



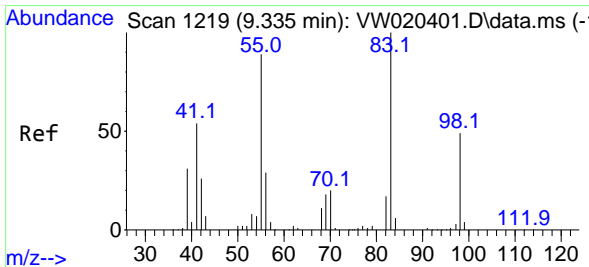
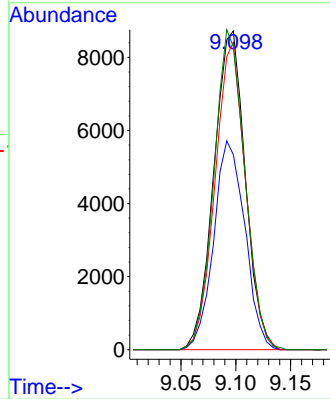
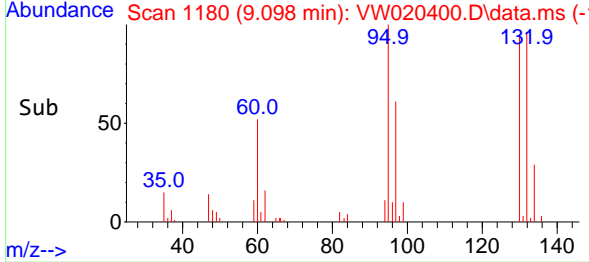


#34
 Trichloroethene
 Concen: 5.221 ug/L
 RT: 9.098 min Scan# 1180
 Delta R.T. 0.006 min
 Lab File: VW020400.D
 Acq: 08 Oct 2021 10:44

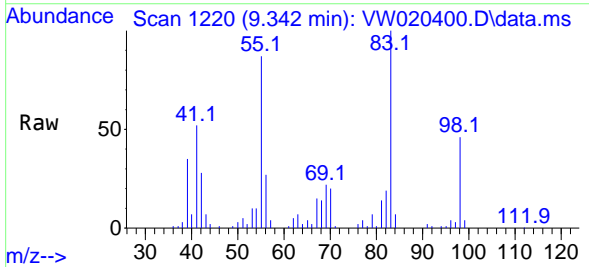
Instrument :
 MSVOA_W
 ClientSampled :



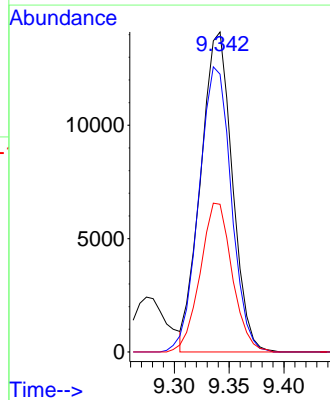
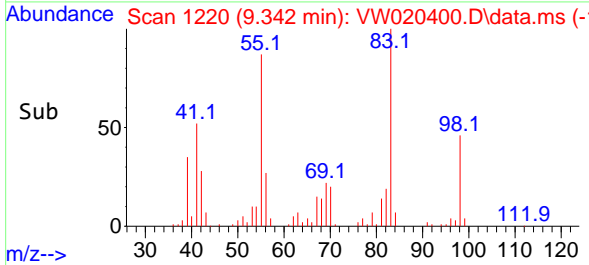
Tgt Ion: 95 Resp: 17381
 Ion Ratio Lower Upper
 95 100
 97 61.2 43.2 80.2
 132 96.5 62.3 115.7
 130 95.0 66.1 122.7

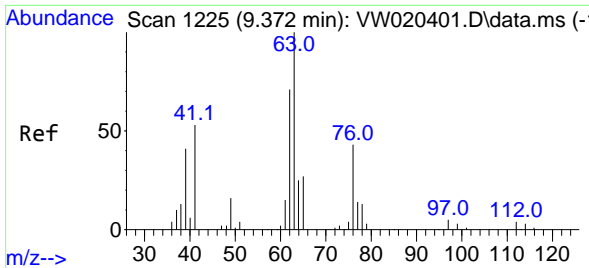


#35
 Methylcyclohexane
 Concen: 4.856 ug/L
 RT: 9.342 min Scan# 1220
 Delta R.T. 0.006 min
 Lab File: VW020400.D
 Acq: 08 Oct 2021 10:44



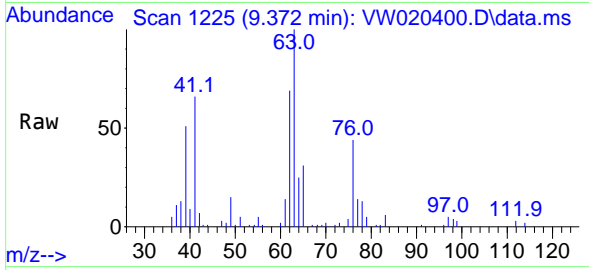
Tgt Ion: 83 Resp: 28290
 Ion Ratio Lower Upper
 83 100
 55 91.3 69.7 104.5
 98 47.1 38.2 57.2



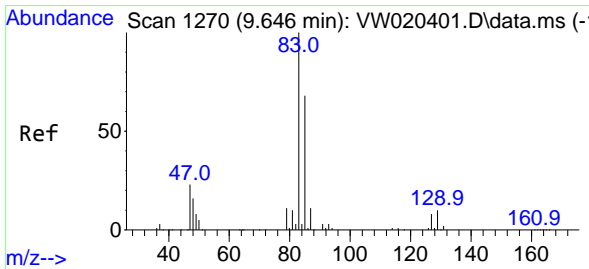
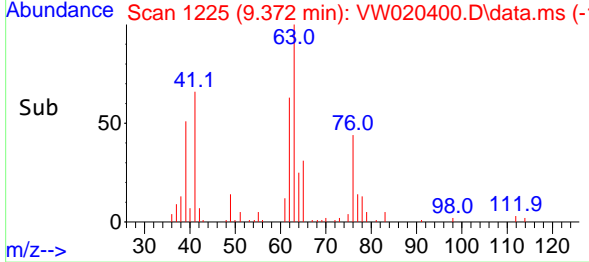
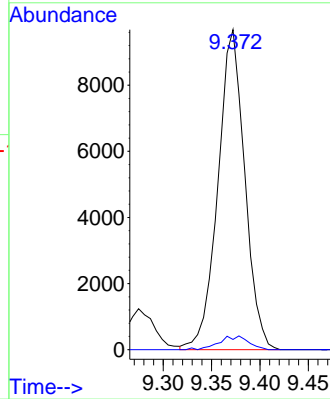


#37
 1,2-Dichloropropane
 Concen: 5.499 ug/L
 RT: 9.372 min Scan# 1225
 Delta R.T. 0.000 min
 Lab File: VW020400.D
 Acq: 08 Oct 2021 10:44

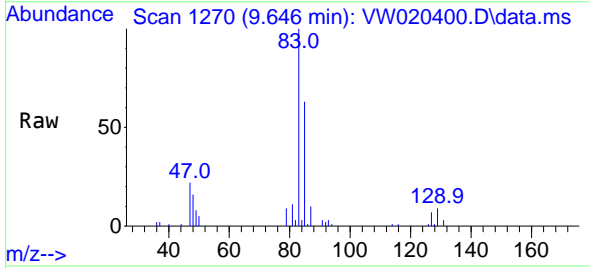
Instrument :
 MSVOA_W
 ClientSampled :



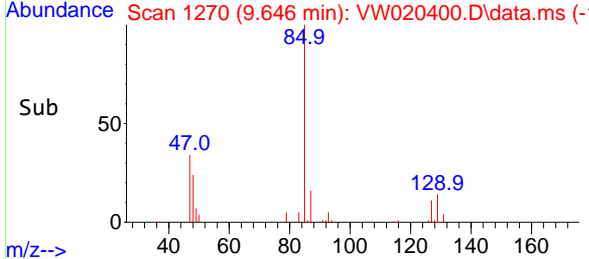
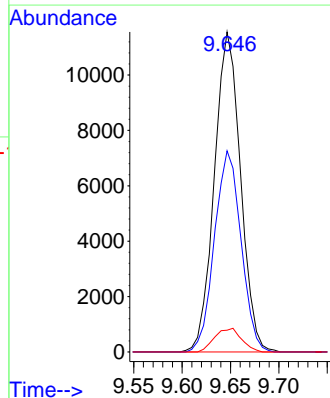
Tgt Ion: 63 Resp: 18685
 Ion Ratio Lower Upper
 63 100
 112 2.5 3.5 5.3#

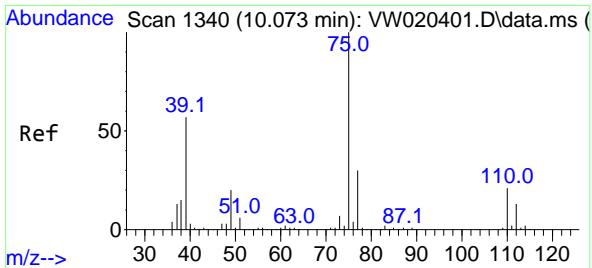


#38
 Bromodichloromethane
 Concen: 5.271 ug/L
 RT: 9.646 min Scan# 1270
 Delta R.T. 0.000 min
 Lab File: VW020400.D
 Acq: 08 Oct 2021 10:44



Tgt Ion: 83 Resp: 21732
 Ion Ratio Lower Upper
 83 100
 85 62.9 43.4 80.6
 127 6.8 6.2 9.2

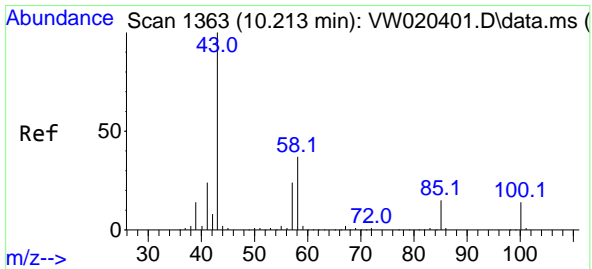
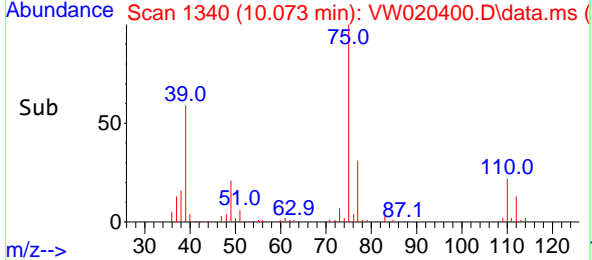
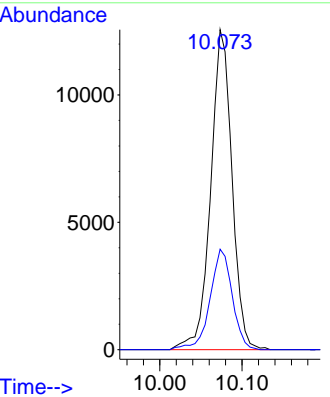
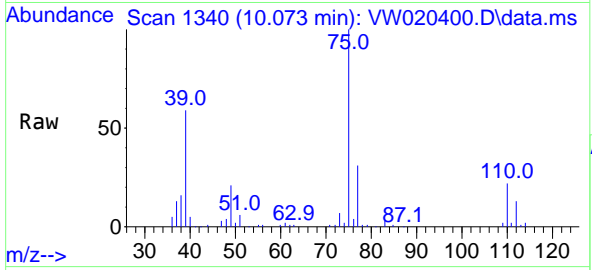




#39
 cis-1,3-Dichloropropene
 Concen: 4.716 ug/L
 RT: 10.073 min Scan# 1340
 Delta R.T. 0.000 min
 Lab File: VW020400.D
 Acq: 08 Oct 2021 10:44

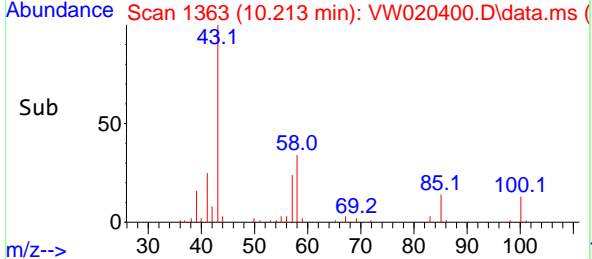
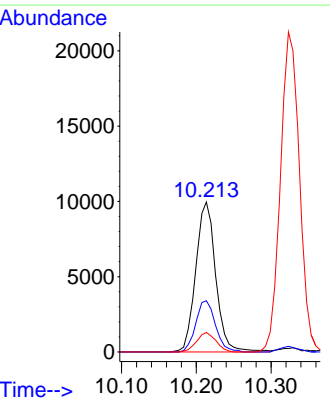
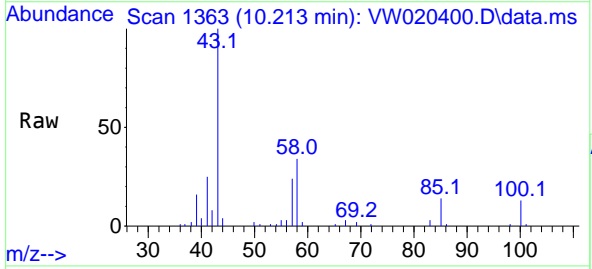
Instrument :
 MSVOA_W
 ClientSampled :

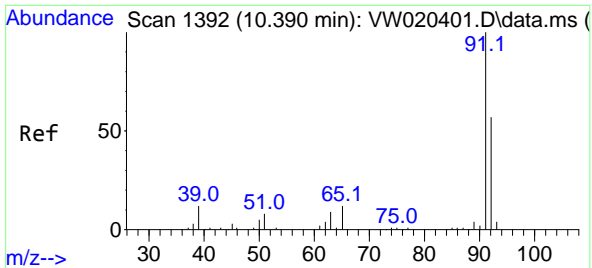
Tgt Ion: 75 Resp: 22636
 Ion Ratio Lower Upper
 75 100
 77 31.4 22.4 41.6



#40
 4-Methyl-2-pentanone
 Concen: 9.540 ug/L
 RT: 10.213 min Scan# 1363
 Delta R.T. 0.000 min
 Lab File: VW020400.D
 Acq: 08 Oct 2021 10:44

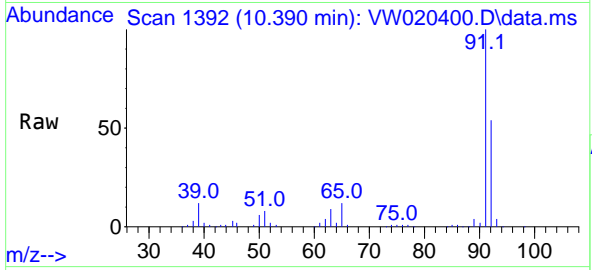
Tgt Ion: 43 Resp: 18513
 Ion Ratio Lower Upper
 43 100
 58 33.7 29.0 43.4
 100 12.6 10.2 15.4



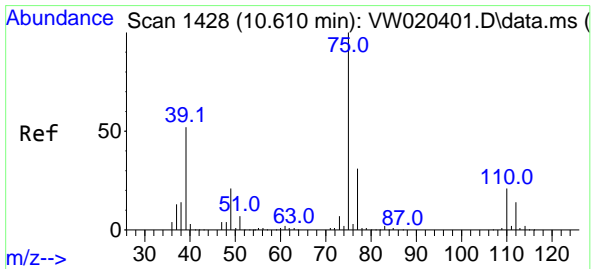
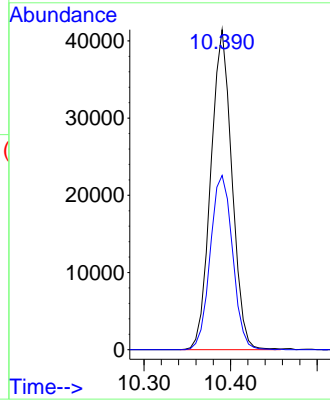
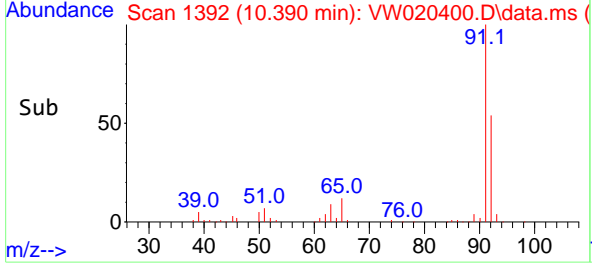


#42
 Toluene
 Concen: 5.161 ug/L
 RT: 10.390 min Scan# 1392
 Delta R.T. 0.000 min
 Lab File: VW020400.D
 Acq: 08 Oct 2021 10:44

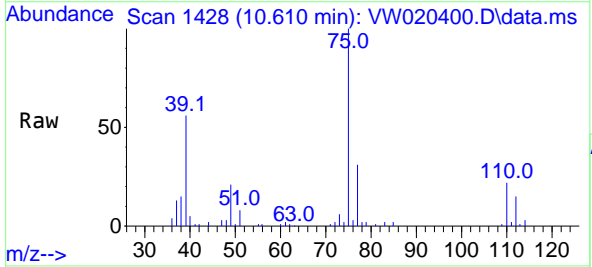
Instrument :
 MSVOA_W
 ClientSampled :



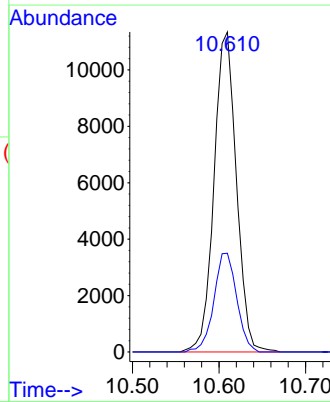
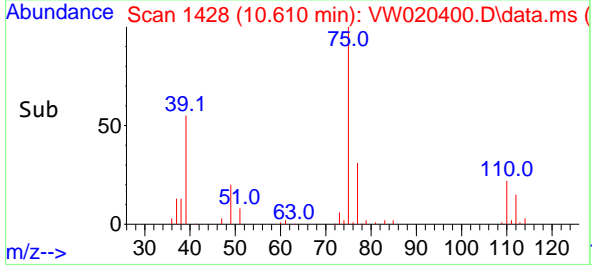
Tgt Ion: 91 Resp: 70294
 Ion Ratio Lower Upper
 91 100
 92 54.4 41.5 77.1

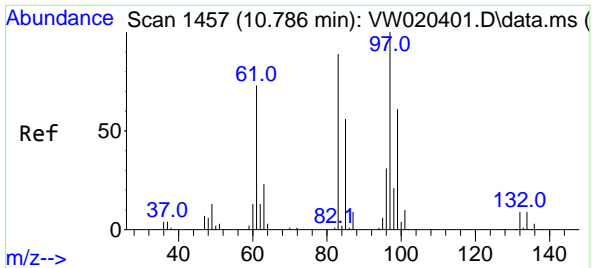


#44
 trans-1,3-Dichloropropene
 Concen: 4.853 ug/L
 RT: 10.610 min Scan# 1428
 Delta R.T. 0.000 min
 Lab File: VW020400.D
 Acq: 08 Oct 2021 10:44



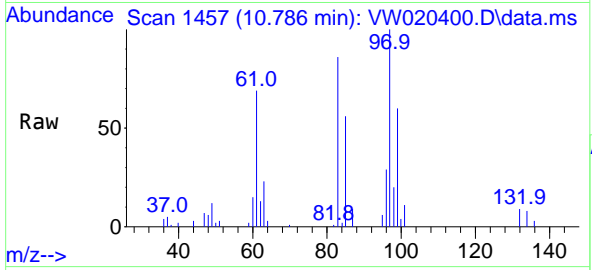
Tgt Ion: 75 Resp: 20352
 Ion Ratio Lower Upper
 75 100
 77 30.9 21.8 40.4





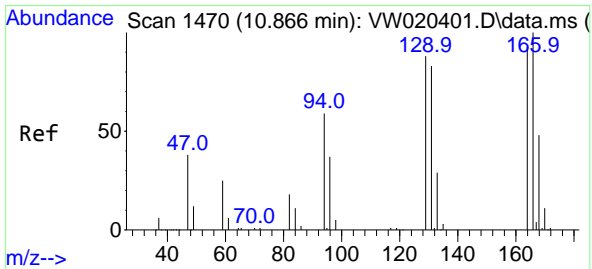
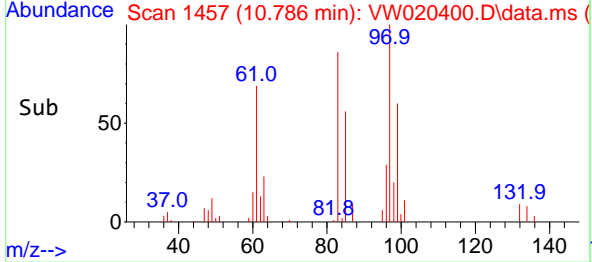
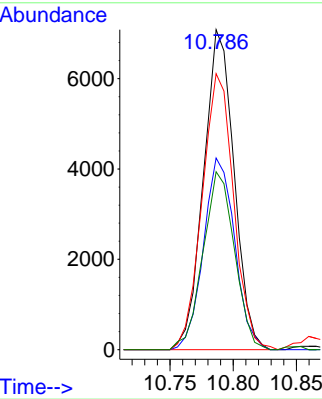
#45
 1,1,2-Trichloroethane
 Concen: 5.439 ug/L
 RT: 10.786 min Scan# 1457
 Delta R.T. 0.000 min
 Lab File: VW020400.D
 Acq: 08 Oct 2021 10:44

Instrument :
 MSVOA_W
 ClientSampled :

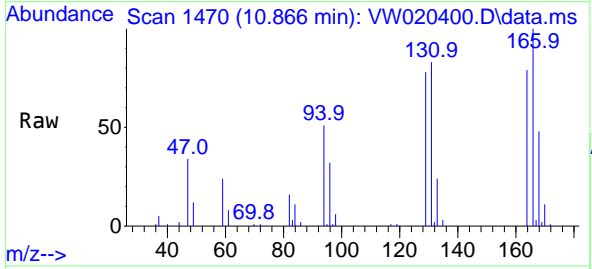


Tgt Ion: 97 Resp: 11876

Ion	Ratio	Lower	Upper
97	100		
99	59.9	42.8	79.4
83	86.3	60.9	113.1
85	55.6	39.6	73.6

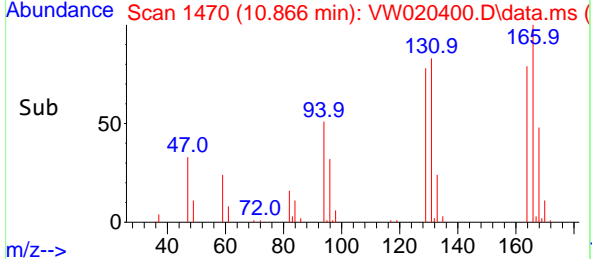
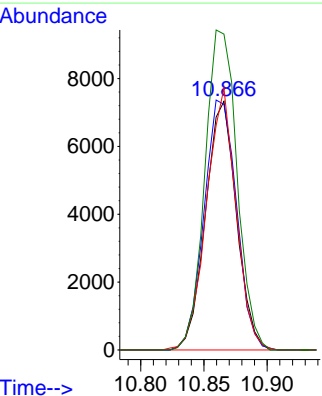


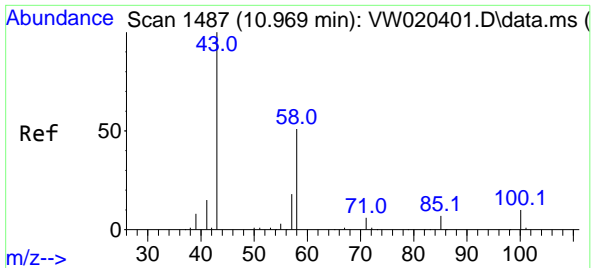
#46
 Tetrachloroethene
 Concen: 5.097 ug/L
 RT: 10.866 min Scan# 1470
 Delta R.T. 0.000 min
 Lab File: VW020400.D
 Acq: 08 Oct 2021 10:44



Tgt Ion:164 Resp: 12469

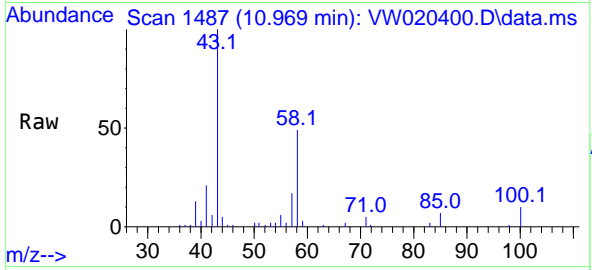
Ion	Ratio	Lower	Upper
164	100		
129	98.8	69.1	128.3
131	105.3	58.3	108.3
166	127.0	90.4	168.0





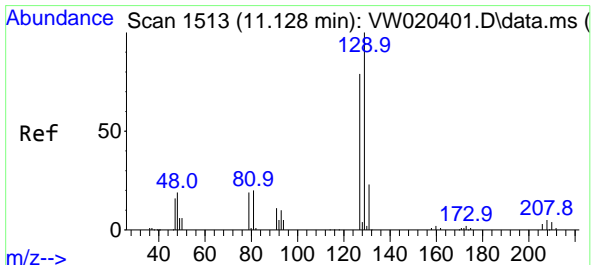
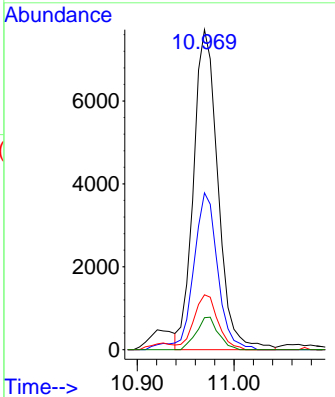
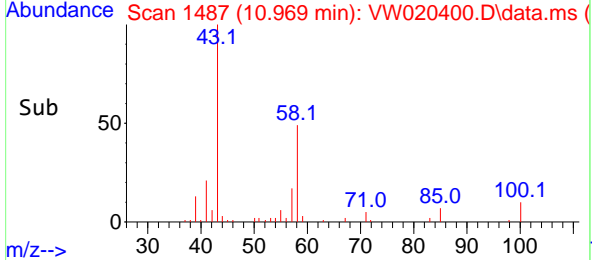
#48
 2-Hexanone
 Concen: 9.551 ug/L
 RT: 10.969 min Scan# 1487
 Delta R.T. 0.000 min
 Lab File: VW020400.D
 Acq: 08 Oct 2021 10:44

Instrument :
 MSVOA_W
 ClientSampled :

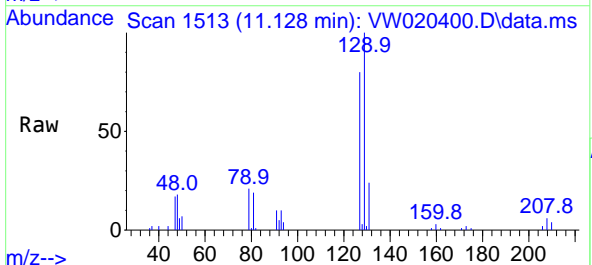


Tgt Ion: 43 Resp: 13556

Ion	Ratio	Lower	Upper
43	100		
58	47.0	39.5	59.3
57	17.0	14.2	21.4
100	9.1	8.2	12.4

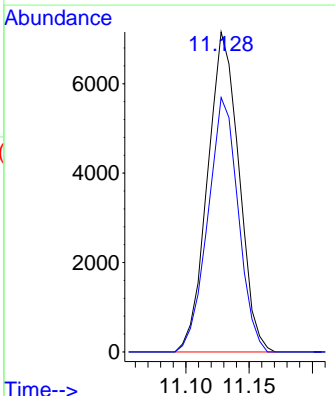
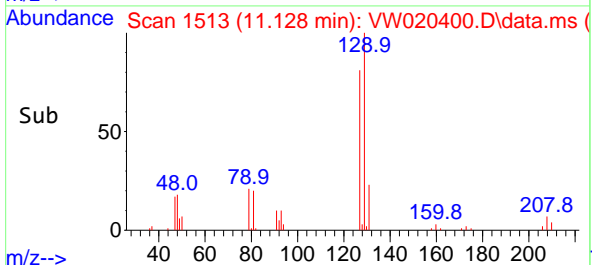


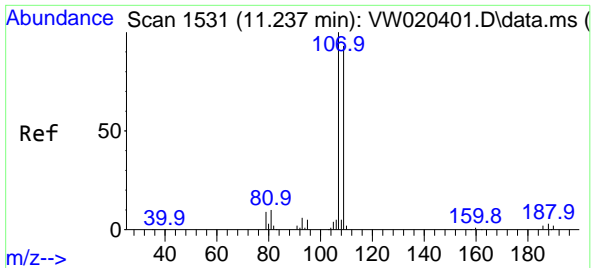
#49
 Dibromochloromethane
 Concen: 5.068 ug/L
 RT: 11.128 min Scan# 1513
 Delta R.T. 0.000 min
 Lab File: VW020400.D
 Acq: 08 Oct 2021 10:44



Tgt Ion: 129 Resp: 12330

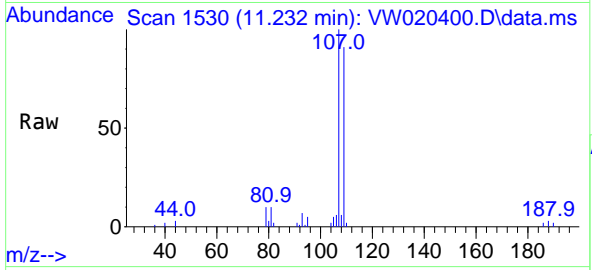
Ion	Ratio	Lower	Upper
129	100		
127	79.5	55.1	102.3





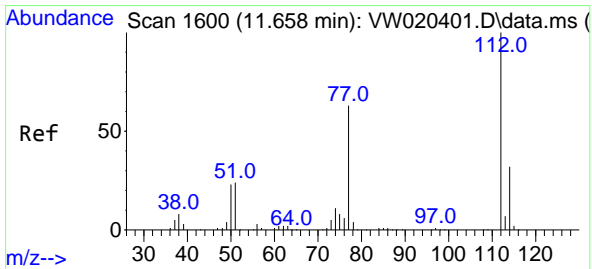
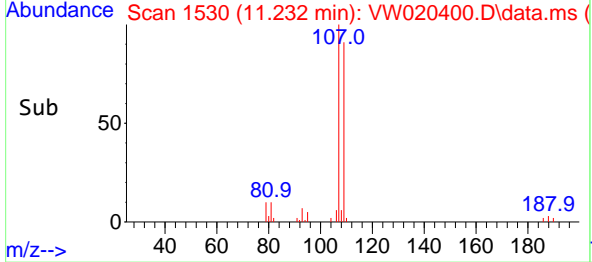
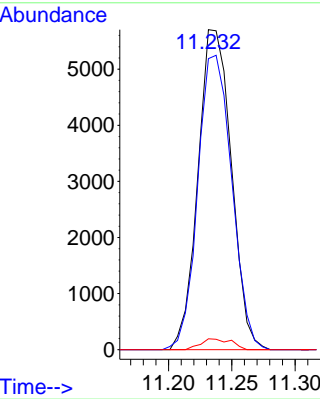
#50
 1,2-Dibromoethane
 Concen: 5.213 ug/L
 RT: 11.232 min Scan# 1530
 Delta R.T. -0.006 min
 Lab File: VW020400.D
 Acq: 08 Oct 2021 10:44

Instrument :
 MSVOA_W
 ClientSampled :

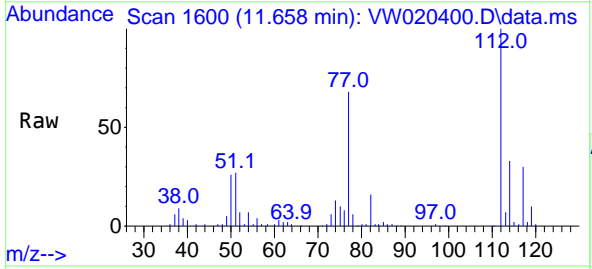


Tgt Ion:107 Resp: 10472

Ion	Ratio	Lower	Upper
107	100		
109	90.9	64.5	119.9
188	3.4	3.2	4.8

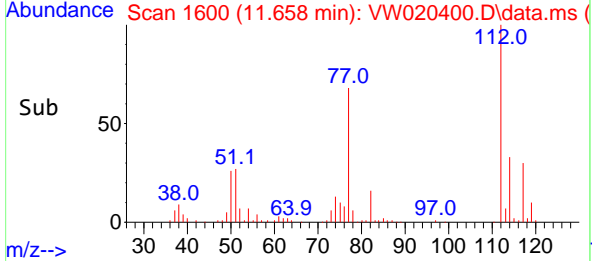
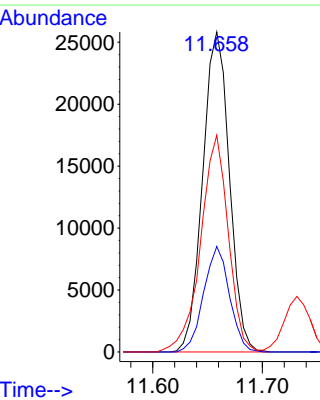


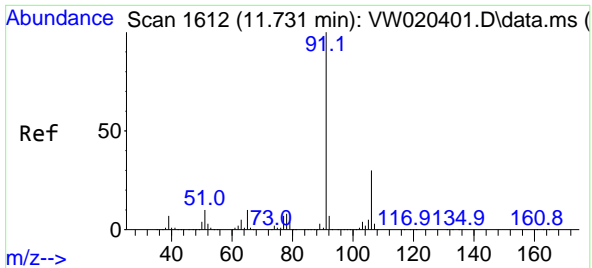
#51
 Chlorobenzene
 Concen: 5.274 ug/L
 RT: 11.658 min Scan# 1600
 Delta R.T. 0.000 min
 Lab File: VW020400.D
 Acq: 08 Oct 2021 10:44



Tgt Ion:112 Resp: 43729

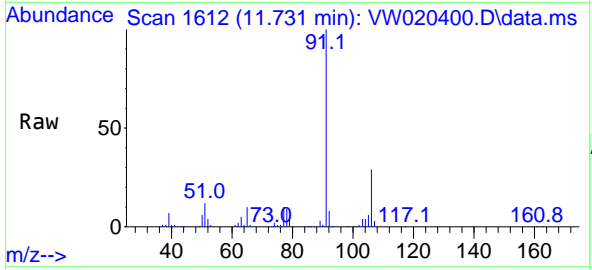
Ion	Ratio	Lower	Upper
112	100		
114	33.0	22.3	41.5
77	67.7	50.7	76.1



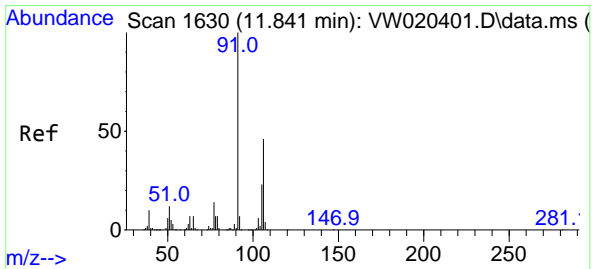
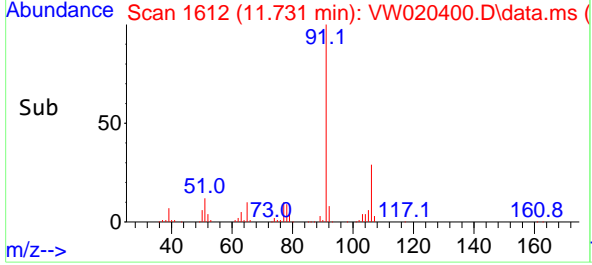
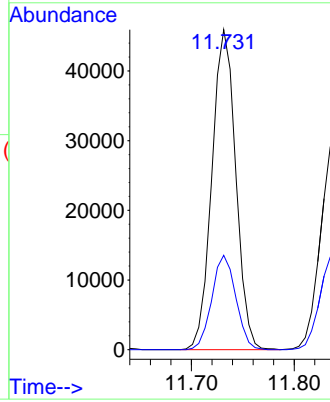


#52
 Ethylbenzene
 Concen: 4.963 ug/L
 RT: 11.731 min Scan# 1612
 Delta R.T. 0.000 min
 Lab File: VW020400.D
 Acq: 08 Oct 2021 10:44

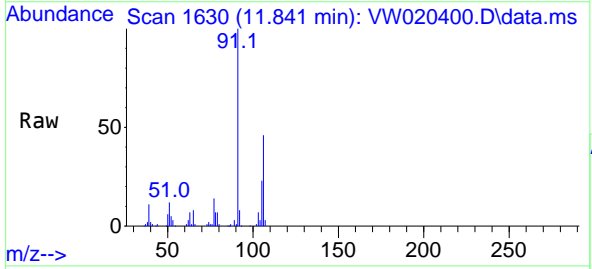
Instrument :
 MSVOA_W
 ClientSampled :



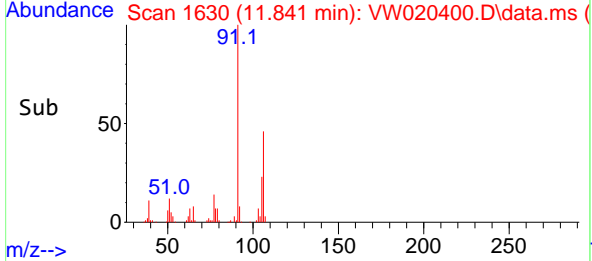
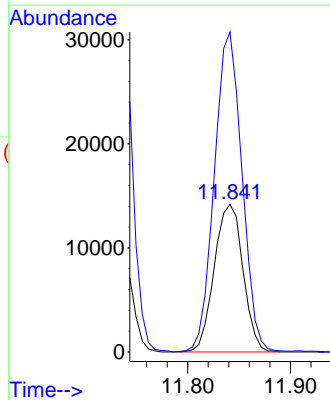
Tgt Ion: 91 Resp: 74040
 Ion Ratio Lower Upper
 91 100
 106 29.5 21.3 39.5

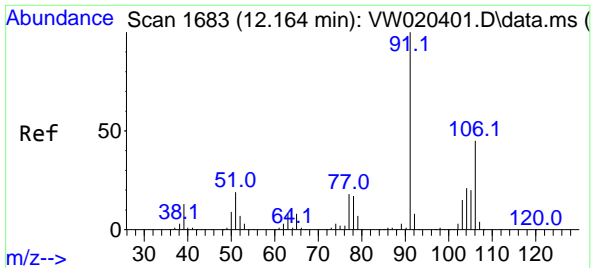


#53
 m,p-Xylene
 Concen: 5.002 ug/L
 RT: 11.841 min Scan# 1630
 Delta R.T. 0.000 min
 Lab File: VW020400.D
 Acq: 08 Oct 2021 10:44



Tgt Ion: 106 Resp: 27511
 Ion Ratio Lower Upper
 106 100
 91 216.7 148.2 275.2

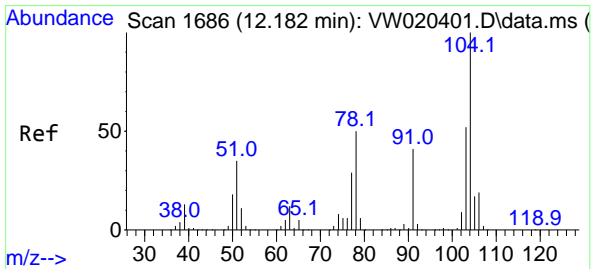
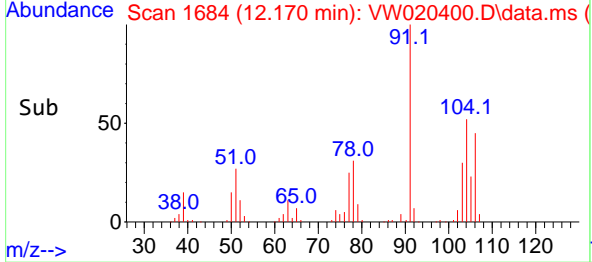
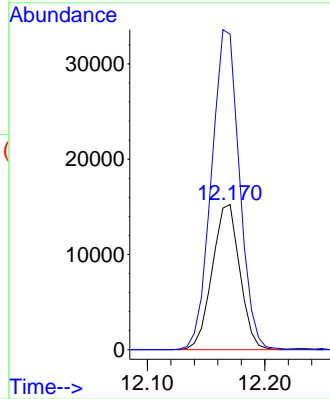
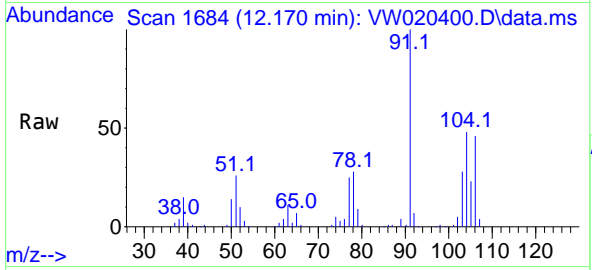




#54
o-Xylene
Concen: 4.824 ug/L
RT: 12.170 min Scan# 1684
Delta R.T. 0.006 min
Lab File: VW020400.D
Acq: 08 Oct 2021 10:44

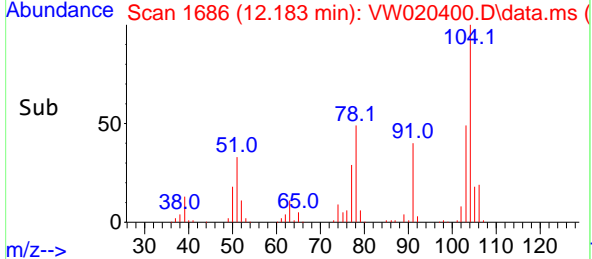
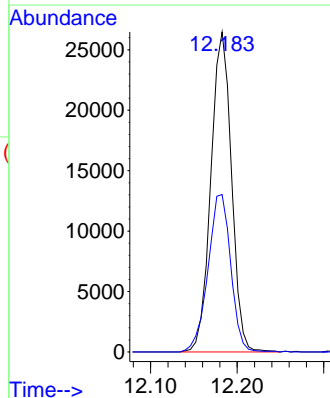
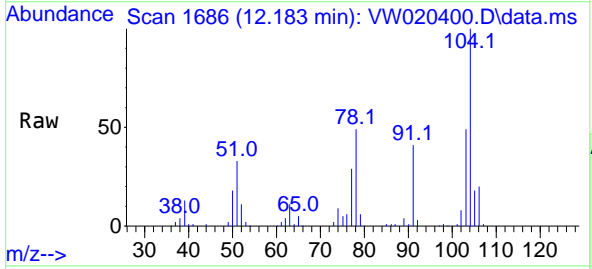
Instrument :
MSVOA_W
ClientSampled :

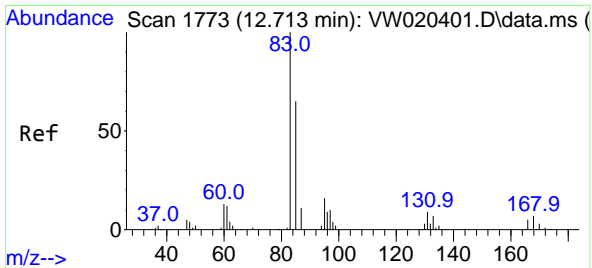
Tgt Ion:106 Resp: 24862
Ion Ratio Lower Upper
106 100
91 217.4 156.1 289.9



#55
Styrene
Concen: 4.947 ug/L
RT: 12.183 min Scan# 1686
Delta R.T. 0.000 min
Lab File: VW020400.D
Acq: 08 Oct 2021 10:44

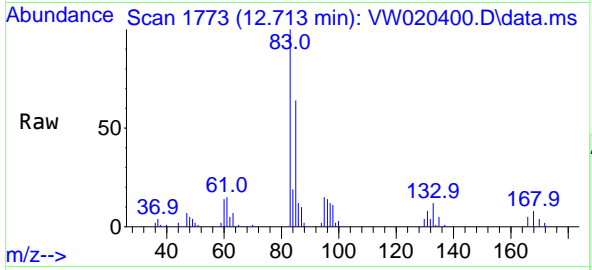
Tgt Ion:104 Resp: 43769
Ion Ratio Lower Upper
104 100
78 49.2 33.2 61.7





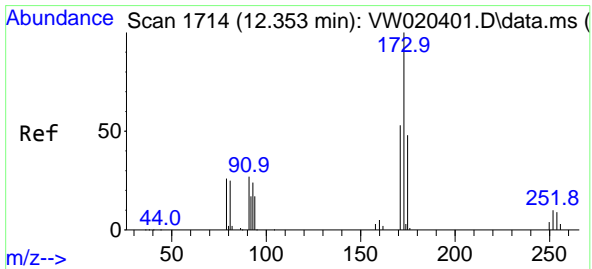
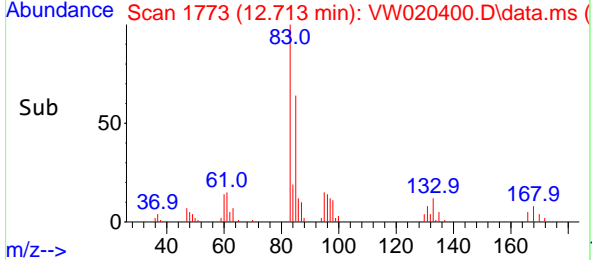
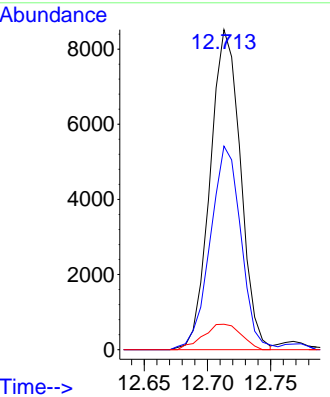
#57
 1,1,2,2-Tetrachloroethane
 Concen: 5.416 ug/L
 RT: 12.713 min Scan# 1773
 Delta R.T. 0.000 min
 Lab File: VW020400.D
 Acq: 08 Oct 2021 10:44

Instrument :
 MSVOA_W
 ClientSampled :

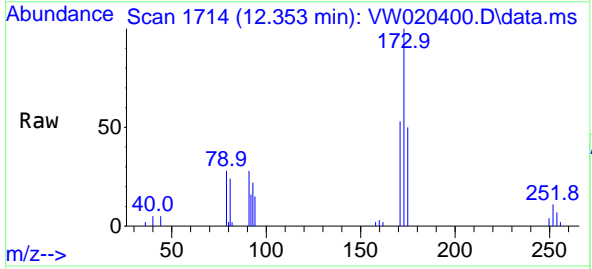


Tgt Ion: 83 Resp: 14203

Ion	Ratio	Lower	Upper
83	100		
85	63.6	45.9	85.3
131	8.0	7.4	11.2

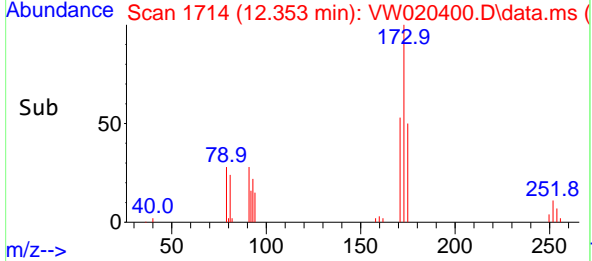
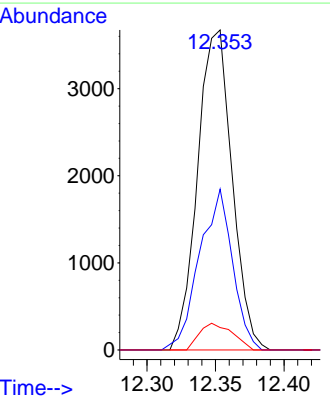


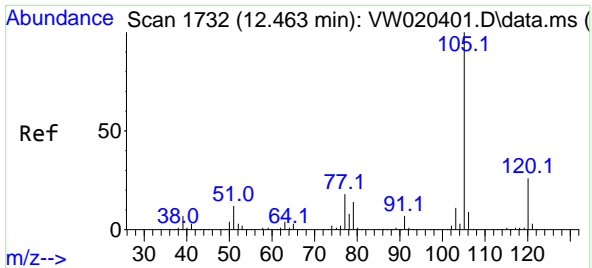
#59
 Bromoform
 Concen: 4.906 ug/L
 RT: 12.353 min Scan# 1714
 Delta R.T. 0.000 min
 Lab File: VW020400.D
 Acq: 08 Oct 2021 10:44



Tgt Ion: 173 Resp: 6441

Ion	Ratio	Lower	Upper
173	100		
175	48.0	38.6	57.8
254	8.0	7.3	10.9



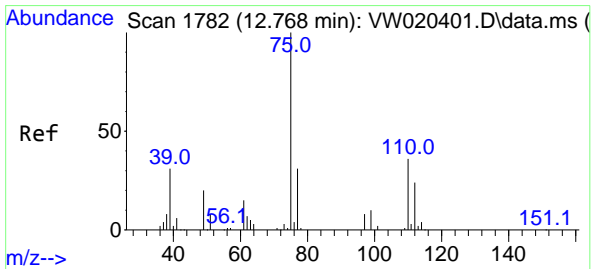
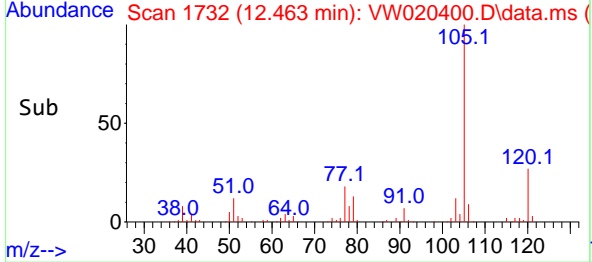
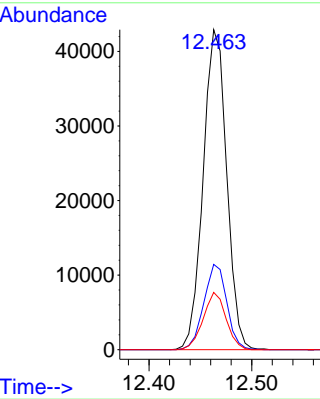
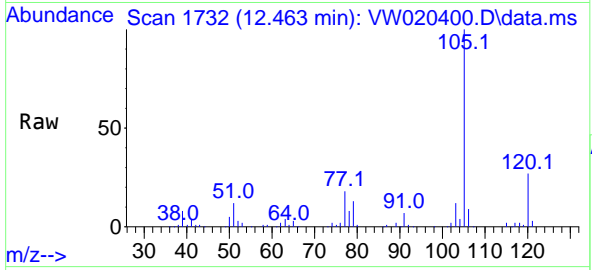


#60
 Isopropylbenzene
 Concen: 4.729 ug/L
 RT: 12.463 min Scan# 1732
 Delta R.T. 0.000 min
 Lab File: VW020400.D
 Acq: 08 Oct 2021 10:44

Instrument :
 MSVOA_W
 ClientSampled :

Tgt Ion:105 Resp: 68122

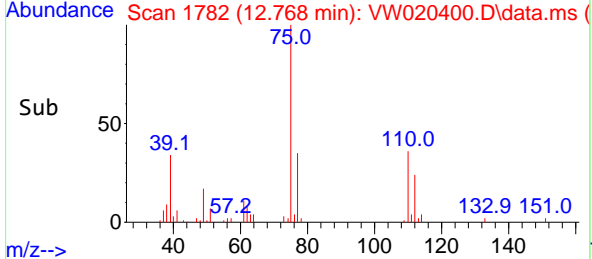
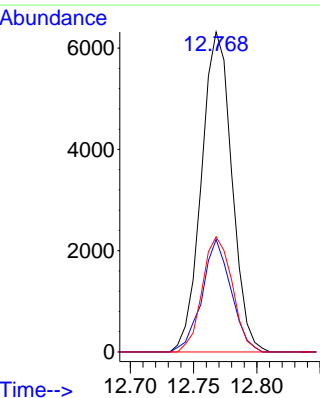
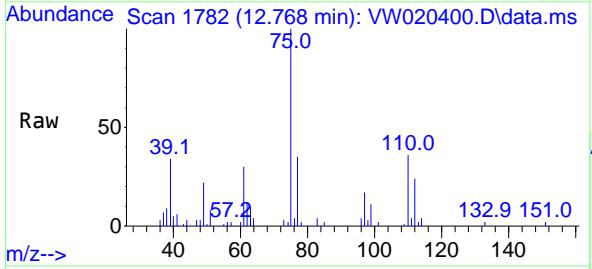
Ion	Ratio	Lower	Upper
105	100		
120	26.0	20.3	30.5
77	17.4	13.8	20.6

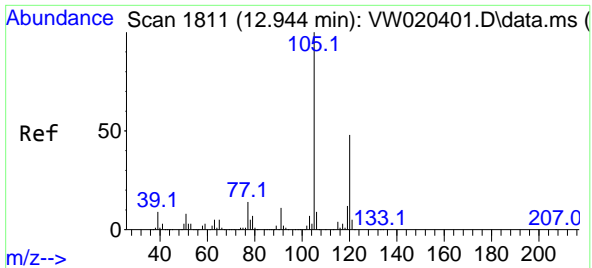


#61
 1,2,3-Trichloropropane
 Concen: 5.325 ug/L
 RT: 12.768 min Scan# 1782
 Delta R.T. 0.000 min
 Lab File: VW020400.D
 Acq: 08 Oct 2021 10:44

Tgt Ion: 75 Resp: 10562

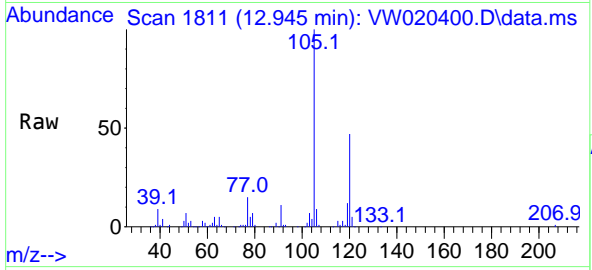
Ion	Ratio	Lower	Upper
75	100		
77	33.6	25.1	37.7
110	35.5	29.4	44.0



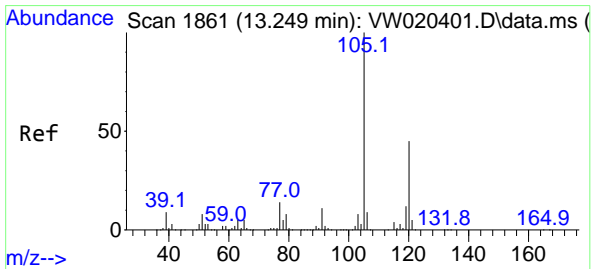
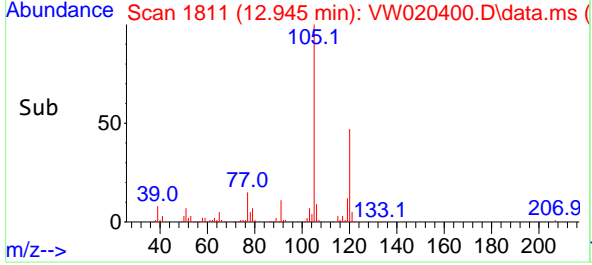
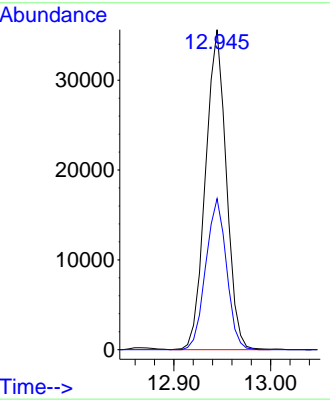


#62
 1,3,5-Trimethylbenzene
 Concen: 4.565 ug/L
 RT: 12.945 min Scan# 1811
 Delta R.T. 0.000 min
 Lab File: VW020400.D
 Acq: 08 Oct 2021 10:44

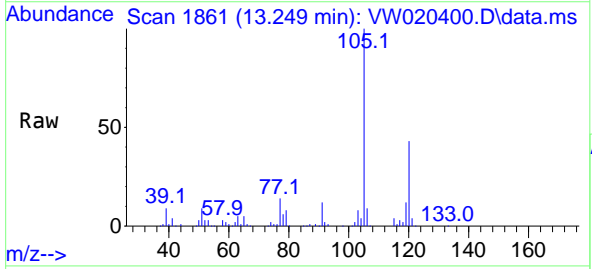
Instrument :
 MSVOA_W
 ClientSampled :



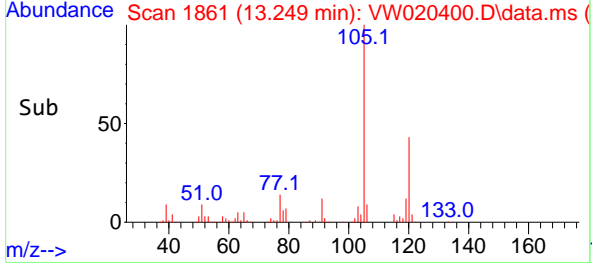
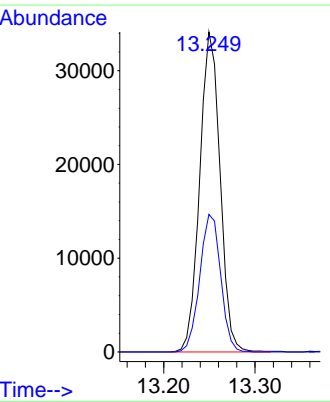
Tgt Ion:105 Resp: 53145
 Ion Ratio Lower Upper
 105 100
 120 47.0 37.9 56.9

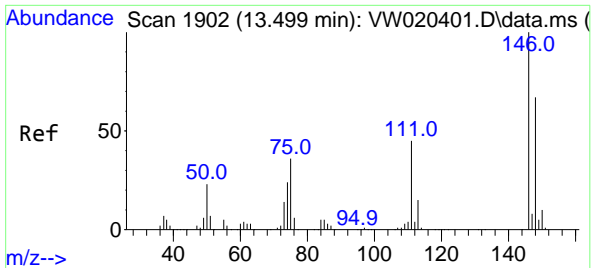


#63
 1,2,4-Trimethylbenzene
 Concen: 4.528 ug/L
 RT: 13.249 min Scan# 1861
 Delta R.T. 0.000 min
 Lab File: VW020400.D
 Acq: 08 Oct 2021 10:44



Tgt Ion:105 Resp: 52792
 Ion Ratio Lower Upper
 105 100
 120 44.1 35.4 53.2



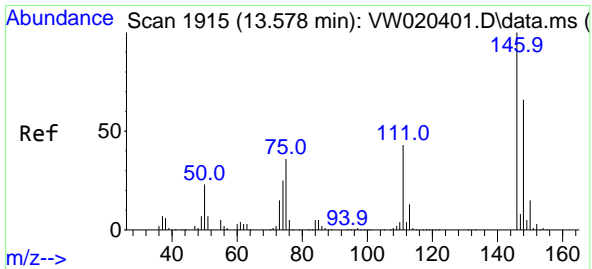
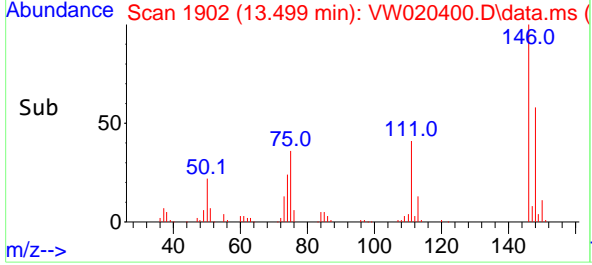
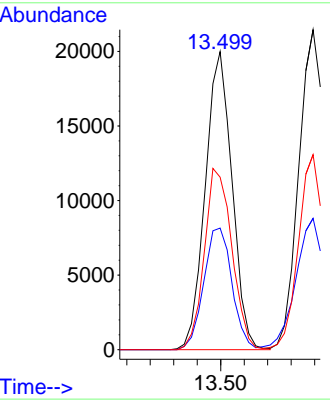
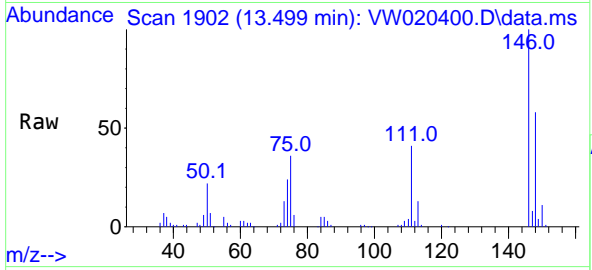


#64
 1,3-Dichlorobenzene
 Concen: 5.219 ug/L
 RT: 13.499 min Scan# 1902
 Delta R.T. 0.000 min
 Lab File: VW020400.D
 Acq: 08 Oct 2021 10:44

Instrument :
 MSVOA_W
 ClientSampled :

Tgt Ion:146 Resp: 31662

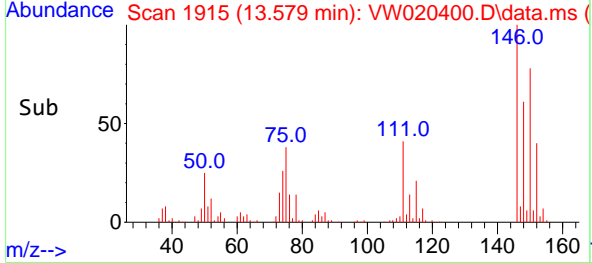
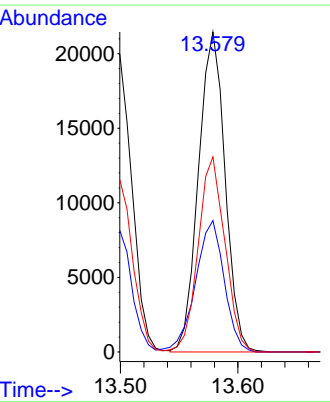
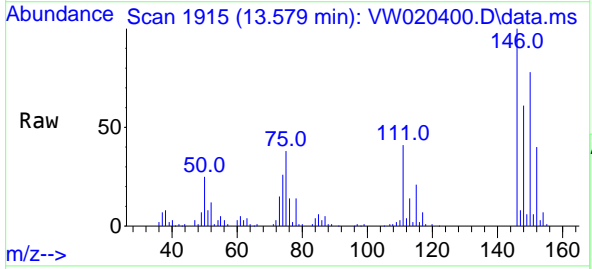
Ion	Ratio	Lower	Upper
146	100		
111	40.8	29.0	53.8
148	57.9	42.4	78.6

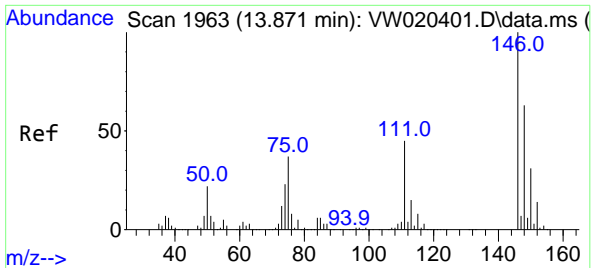


#65
 1,4-Dichlorobenzene
 Concen: 5.503 ug/L
 RT: 13.579 min Scan# 1915
 Delta R.T. 0.000 min
 Lab File: VW020400.D
 Acq: 08 Oct 2021 10:44

Tgt Ion:146 Resp: 33810

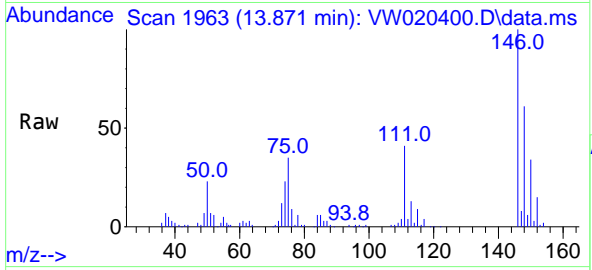
Ion	Ratio	Lower	Upper
146	100		
111	41.1	30.9	57.5
148	60.9	46.1	85.7





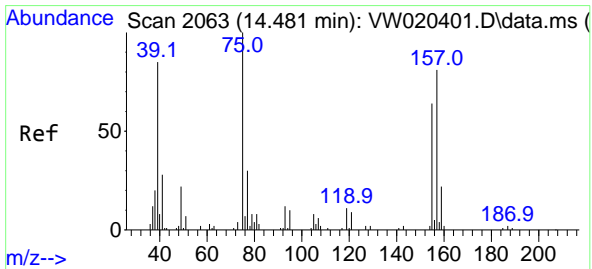
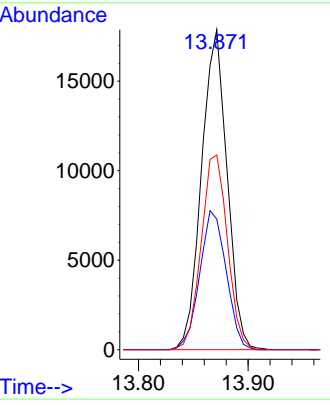
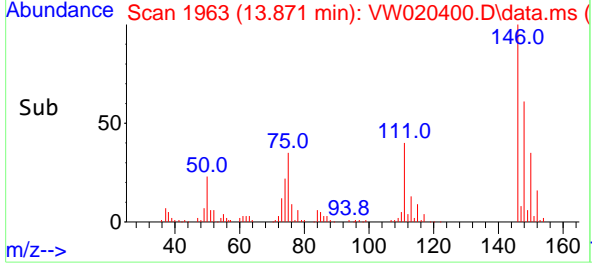
#67
 1,2-Dichlorobenzene
 Concen: 5.325 ug/L
 RT: 13.871 min Scan# 1963
 Delta R.T. 0.000 min
 Lab File: VW020400.D
 Acq: 08 Oct 2021 10:44

Instrument :
 MSVOA_W
 ClientSampled :

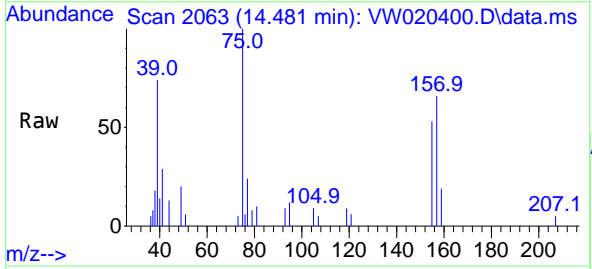


Tgt Ion:146 Resp: 28950

Ion	Ratio	Lower	Upper
146	100		
111	40.8	33.9	50.9
148	60.9	51.0	76.4

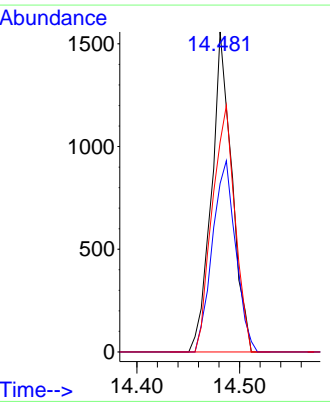
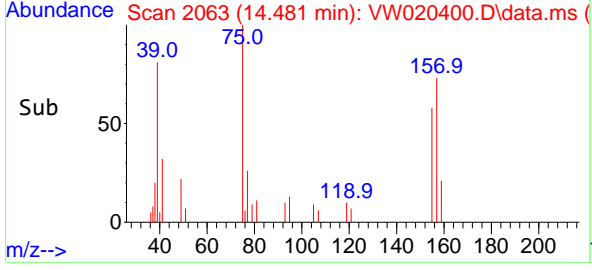


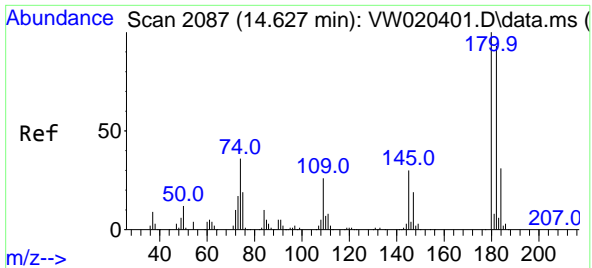
#68
 1,2-Dibromo-3-chloropropane
 Concen: 5.077 ug/L
 RT: 14.481 min Scan# 2063
 Delta R.T. 0.000 min
 Lab File: VW020400.D
 Acq: 08 Oct 2021 10:44



Tgt Ion: 75 Resp: 2152

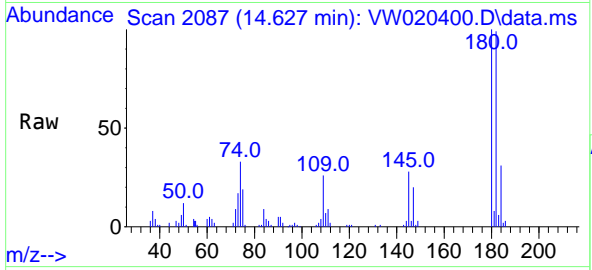
Ion	Ratio	Lower	Upper
75	100		
155	52.6	51.4	77.0
157	65.6	70.8	106.2#



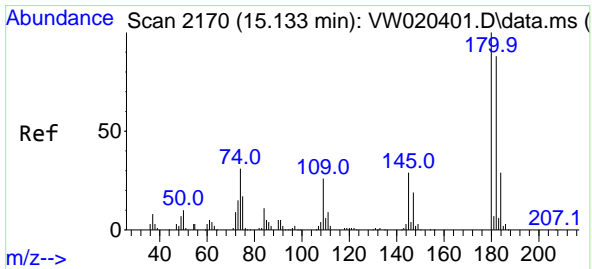
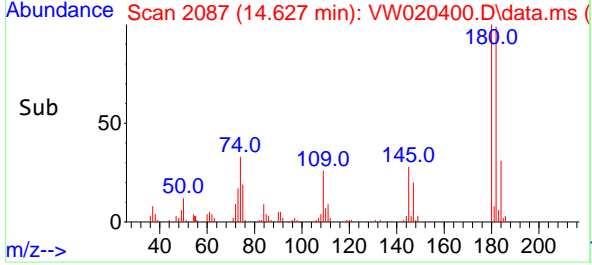
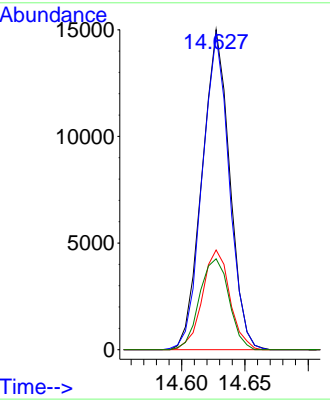


#69
 1,3,5-Trichlorobenzene
 Concen: 5.278 ug/L
 RT: 14.627 min Scan# 2087
 Delta R.T. 0.000 min
 Lab File: VW020400.D
 Acq: 08 Oct 2021 10:44

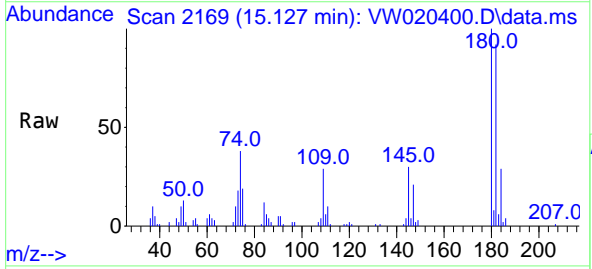
Instrument :
 MSVOA_W
 ClientSampled :



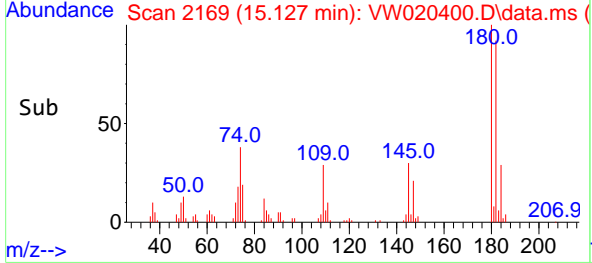
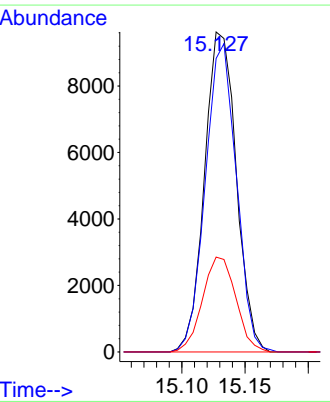
Tgt Ion:180 Resp: 22714
 Ion Ratio Lower Upper
 180 100
 182 96.4 73.4 110.0
 184 31.1 24.2 36.4
 145 30.4 23.7 35.5

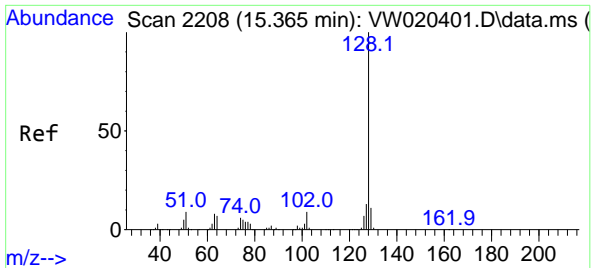


#70
 1,2,4-trichlorobenzene
 Concen: 4.956 ug/L
 RT: 15.127 min Scan# 2169
 Delta R.T. -0.006 min
 Lab File: VW020400.D
 Acq: 08 Oct 2021 10:44



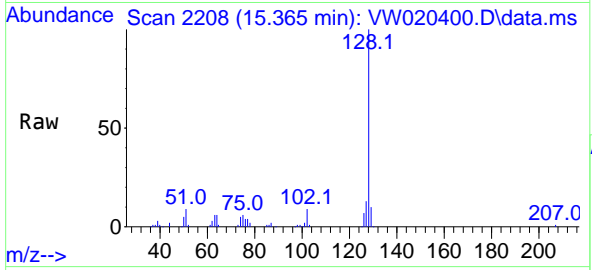
Tgt Ion:180 Resp: 16802
 Ion Ratio Lower Upper
 180 100
 182 94.0 75.8 113.8
 145 31.2 24.8 37.2





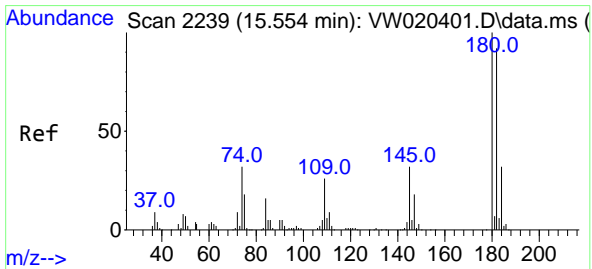
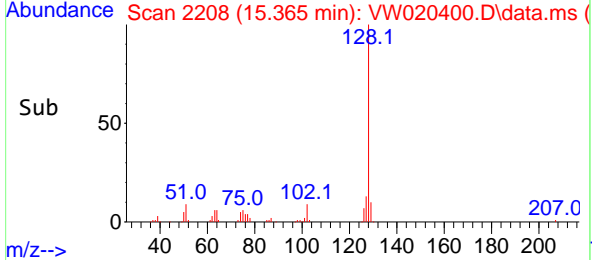
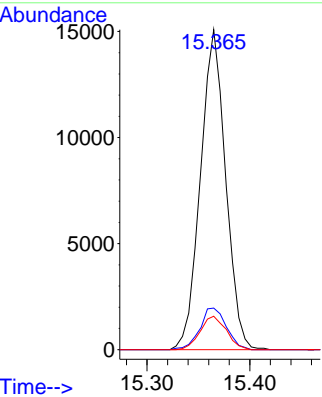
#71
 Naphthalene
 Concen: 4.292 ug/L
 RT: 15.365 min Scan# 2208
 Delta R.T. 0.000 min
 Lab File: VW020400.D
 Acq: 08 Oct 2021 10:44

Instrument :
 MSVOA_W
 ClientSampled :

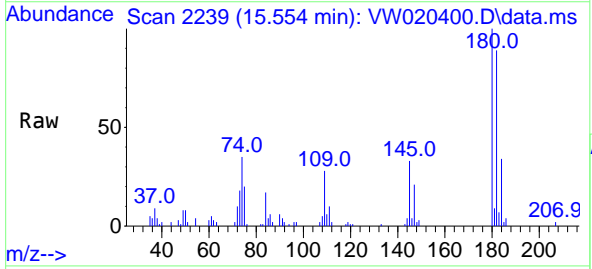


Tgt Ion:128 Resp: 25680

Ion	Ratio	Lower	Upper
128	100		
127	13.7	10.5	15.7
129	10.9	8.7	13.1



#72
 1,2,3-Trichlorobenzene
 Concen: 5.060 ug/L
 RT: 15.554 min Scan# 2239
 Delta R.T. 0.000 min
 Lab File: VW020400.D
 Acq: 08 Oct 2021 10:44



Tgt Ion:180 Resp: 14981

Ion	Ratio	Lower	Upper
180	100		
182	97.3	74.8	112.2
145	35.2	26.2	39.4

