

Data Path : Z:\VOASRV\HPCHEM1\MSVOA W\DATA\VW100918\
 Data File : VW005944.D
 Acq On : 09 Oct 2018 16:02
 Operator : SY/AP
 Sample : J5182-20
 Misc : 5.00G/10ML/MSVOA W/SOIL
 ALS Vial : 1 Sample Multiplier: 1

Instrument :
 MSVOA_W
 ClientSampleId :
 VHBLK01

Integration Parameters: LSCINT.P

Integrator: RTE
 Smoothing : OFF
 Sampling : 1
 Start Thrs: 0.2
 Stop Thrs : 0

Filtering: 5
 Min Area: 0 % of largest Peak
 Max Peaks: 100
 Peak Location: TOP

If leading or trailing edge < 100 prefer < Baseline drop else tangent >
 Peak separation: 5

Method : Z:\VOASRV\HPCHEM1\MSVOA_W\METHOD\SOM2WLM100918S.M
 Title : VOC Analysis

Signal : TIC

peak #	R.T. min	first scan	max scan	last scan	PK TY	peak height	corr. area	corr. % max.	% of total
1	2.160	38	42	43	rBV3	1033	1323	0.08%	0.013%
2	2.209	43	50	52	rBV5	4411	9226	0.57%	0.093%
3	2.361	69	75	89	rVB	61824	137074	8.46%	1.379%
4	2.898	156	163	177	rVB	46957	131756	8.13%	1.325%
5	3.824	313	315	316	rBV2	639	433	0.03%	0.004%
6	3.855	316	320	325	rVV6	1249	2440	0.15%	0.025%
7	4.013	334	346	363	rBV	112173	365096	22.54%	3.672%
8	4.318	394	396	399	rBV4	438	442	0.03%	0.004%
9	4.434	414	415	416	rBV	632	428	0.03%	0.004%
10	4.489	423	424	430	rVB4	670	890	0.05%	0.009%
11	4.855	482	484	485	rVV2	536	504	0.03%	0.005%
12	4.922	485	495	513	rVB6	5989	25569	1.58%	0.257%
13	5.409	573	575	576	rVV2	626	494	0.03%	0.005%
14	5.428	576	578	581	rVV4	892	1183	0.07%	0.012%
15	5.586	600	604	606	rBV3	446	530	0.03%	0.005%
16	5.617	606	609	612	rVV4	414	619	0.04%	0.006%
17	5.751	624	631	639	rVB6	2065	5784	0.36%	0.058%
18	5.940	652	662	675	rVB4	4739	14964	0.92%	0.150%
19	6.226	708	709	712	rVB3	641	533	0.03%	0.005%
20	6.263	712	715	717	rBV3	370	472	0.03%	0.005%
21	6.342	724	728	729	rVB4	365	431	0.03%	0.004%
22	6.659	776	780	783	rBB4	349	466	0.03%	0.005%
23	7.086	840	850	855	rBV	38680	108111	6.67%	1.087%
24	7.153	855	861	876	rVB	55678	159912	9.87%	1.608%
25	7.537	920	924	928	rVV6	728	1358	0.08%	0.014%
26	7.647	932	942	955	rVV	174324	429627	26.52%	4.321%
27	7.952	988	992	995	rBV4	1039	1643	0.10%	0.017%
28	8.073	1009	1012	1016	rVB3	476	493	0.03%	0.005%
29	8.269	1031	1044	1060	rBV3	499253	1619721	100.00%	16.290%
30	8.464	1071	1076	1078	rBV4	532	839	0.05%	0.008%
31	8.695	1110	1114	1116	rBV4	584	667	0.04%	0.007%
32	8.762	1124	1125	1129	rBV3	425	480	0.03%	0.005%
33	8.848	1129	1139	1150	rVV	392741	785709	48.51%	7.902%
34	9.049	1168	1172	1173	rBV3	676	783	0.05%	0.008%

Data Path : Z:\VOASRV\HPCHEM1\MSVOA W\DATA\VW100918\
 Data File : VW005944.D
 Acq On : 09 Oct 2018 16:02
 Operator : SY/AP
 Sample : J5182-20
 Misc : 5.00G/10ML/MSVOA W/SOIL
 ALS Vial : 1 Sample Multiplier: 1

Instrument :
 MSVOA_W
 ClientSampleId :
 VHBLK01

Integration Parameters: LSCINT.P

Integrator: RTE
 Smoothing : OFF
 Sampling : 1
 Start Thrs: 0.2
 Stop Thrs : 0

Filtering: 5
 Min Area: 0 % of largest Peak
 Max Peaks: 100
 Peak Location: TOP

If leading or trailing edge < 100 prefer < Baseline drop else tangent >
 Peak separation: 5

Method : Z:\VOASRV\HPCHEM1\MSVOA_W\METHOD\SOM2WLM100918S.M
 Title : VOC Analysis

35	9.061	1173	1174	1175	rVV	913	666	0.04%	0.007%
36	9.086	1176	1178	1184	rVV6	1458	2317	0.14%	0.023%
37	9.140	1185	1187	1193	rVB4	344	449	0.03%	0.005%
38	9.274	1199	1209	1219	rBV	229093	472330	29.16%	4.750%
39	9.549	1252	1254	1258	rVB4	373	482	0.03%	0.005%
40	9.659	1266	1272	1279	rVB8	1158	3381	0.21%	0.034%
41	9.762	1279	1289	1296	rBV4	3654	9080	0.56%	0.091%
42	9.896	1304	1311	1318	rBV2	10313	21457	1.32%	0.216%
43	9.963	1318	1322	1327	rVV4	2688	5725	0.35%	0.058%
44	10.037	1327	1334	1342	rVB	143258	258100	15.93%	2.596%
45	10.250	1359	1369	1374	rBV5	5468	14035	0.87%	0.141%
46	10.323	1374	1381	1390	rVV	531784	947031	58.47%	9.525%
47	10.390	1390	1392	1400	rVB5	2442	3683	0.23%	0.037%
48	10.579	1416	1423	1432	rBV	96692	166673	10.29%	1.676%
49	10.707	1436	1444	1452	rBV	123151	224085	13.83%	2.254%
50	10.780	1452	1456	1461	rVB5	1927	3185	0.20%	0.032%
51	10.853	1461	1468	1474	rVB7	3409	6534	0.40%	0.066%
52	10.927	1474	1480	1491	rBV	163334	271231	16.75%	2.728%
53	11.067	1496	1503	1511	rBV	44181	75737	4.68%	0.762%
54	11.177	1517	1521	1527	rVB3	4916	8260	0.51%	0.083%
55	11.292	1536	1540	1541	rBV3	491	605	0.04%	0.006%
56	11.341	1546	1548	1553	rVB4	677	932	0.06%	0.009%
57	11.445	1553	1565	1572	rBV	75859	130725	8.07%	1.315%
58	11.634	1586	1596	1605	rBV	574215	959324	59.23%	9.648%
59	11.701	1605	1607	1610	rVB3	658	525	0.03%	0.005%
60	11.841	1623	1630	1634	rBV2	1899	3429	0.21%	0.034%
61	11.975	1650	1652	1654	rBV3	466	542	0.03%	0.005%
62	12.036	1660	1662	1664	rVB3	515	437	0.03%	0.004%
63	12.176	1679	1685	1691	rVB4	2436	5076	0.31%	0.051%
64	12.469	1726	1733	1740	rBV4	2694	4978	0.31%	0.050%
65	12.615	1748	1757	1763	rBV	82889	134945	8.33%	1.357%
66	12.695	1763	1770	1779	rVV	226107	367617	22.70%	3.697%
67	12.865	1793	1798	1801	rBV5	946	1377	0.09%	0.014%
68	12.938	1806	1810	1816	rBV2	7116	11337	0.70%	0.114%
69	13.042	1824	1827	1831	rVB5	1308	1825	0.11%	0.018%
70	13.079	1831	1833	1840	rVB5	919	1647	0.10%	0.017%
71	13.176	1845	1849	1850	rBV3	517	822	0.05%	0.008%

Data Path : Z:\VOASRV\HPCHEM1\MSVOA W\DATA\VW100918\
 Data File : VW005944.D
 Acq On : 09 Oct 2018 16:02
 Operator : SY/AP
 Sample : J5182-20
 Misc : 5.00G/10ML/MSVOA W/SOIL
 ALS Vial : 1 Sample Multiplier: 1

Instrument :
 MSVOA_W
 ClientSampleId :
 VHBLK01

Integration Parameters: LSCINT.P

Integrator: RTE
 Smoothing : OFF
 Sampling : 1
 Start Thrs: 0.2
 Stop Thrs : 0

Filtering: 5
 Min Area: 0 % of largest Peak
 Max Peaks: 100
 Peak Location: TOP

If leading or trailing edge < 100 prefer < Baseline drop else tangent >
 Peak separation: 5

Method : Z:\VOASRV\HPCHEM1\MSVOA_W\METHOD\SOM2WLM100918S.M
 Title : VOC Analysis

72	13.195	1850	1852	1855	rVB2	731	760	0.05%	0.008%
73	13.304	1862	1870	1875	rVB3	10325	17307	1.07%	0.174%
74	13.414	1881	1888	1893	rBV5	2377	4804	0.30%	0.048%
75	13.505	1895	1903	1906	rVV6	3271	6783	0.42%	0.068%
76	13.560	1906	1912	1927	rVB	620530	1017846	62.84%	10.237%
77	13.768	1942	1946	1950	rBV4	2614	4642	0.29%	0.047%
78	13.804	1950	1952	1953	rVV2	687	519	0.03%	0.005%
79	13.859	1954	1961	1968	rBV	543853	880713	54.37%	8.858%
80	13.957	1975	1977	1984	rVB6	1297	1751	0.11%	0.018%
81	14.024	1986	1988	1991	rVV3	679	886	0.05%	0.009%
82	14.079	1991	1997	2005	rVB	16792	28280	1.75%	0.284%
83	14.207	2014	2018	2024	rVB6	733	1401	0.09%	0.014%
84	14.328	2030	2038	2044	rBV8	1995	5606	0.35%	0.056%
85	14.639	2084	2089	2094	rVB4	2297	3567	0.22%	0.036%
86	14.737	2100	2105	2109	rVV4	1741	2735	0.17%	0.028%
87	14.956	2139	2141	2144	rVB4	439	485	0.03%	0.005%
88	15.054	2152	2157	2161	rBV6	528	989	0.06%	0.010%
89	15.145	2164	2172	2176	rBV5	2211	4645	0.29%	0.047%
90	15.255	2189	2190	2194	rBV4	498	447	0.03%	0.004%
91	15.371	2204	2209	2214	rBV3	2585	4660	0.29%	0.047%
92	15.414	2214	2216	2217	rVV	879	813	0.05%	0.008%
93	15.450	2217	2222	2227	rVB3	6312	11074	0.68%	0.111%
94	15.511	2228	2232	2236	rVB4	1419	2510	0.15%	0.025%
95	15.566	2236	2241	2244	rBV4	1832	3148	0.19%	0.032%
96	15.682	2256	2260	2261	rBV3	595	602	0.04%	0.006%
97	15.706	2261	2264	2271	rVB6	937	1743	0.11%	0.018%
98	15.773	2271	2275	2279	rBV6	784	1850	0.11%	0.019%
99	15.865	2286	2290	2295	rBV6	786	1313	0.08%	0.013%
100	16.023	2314	2316	2320	rVB5	476	597	0.04%	0.006%

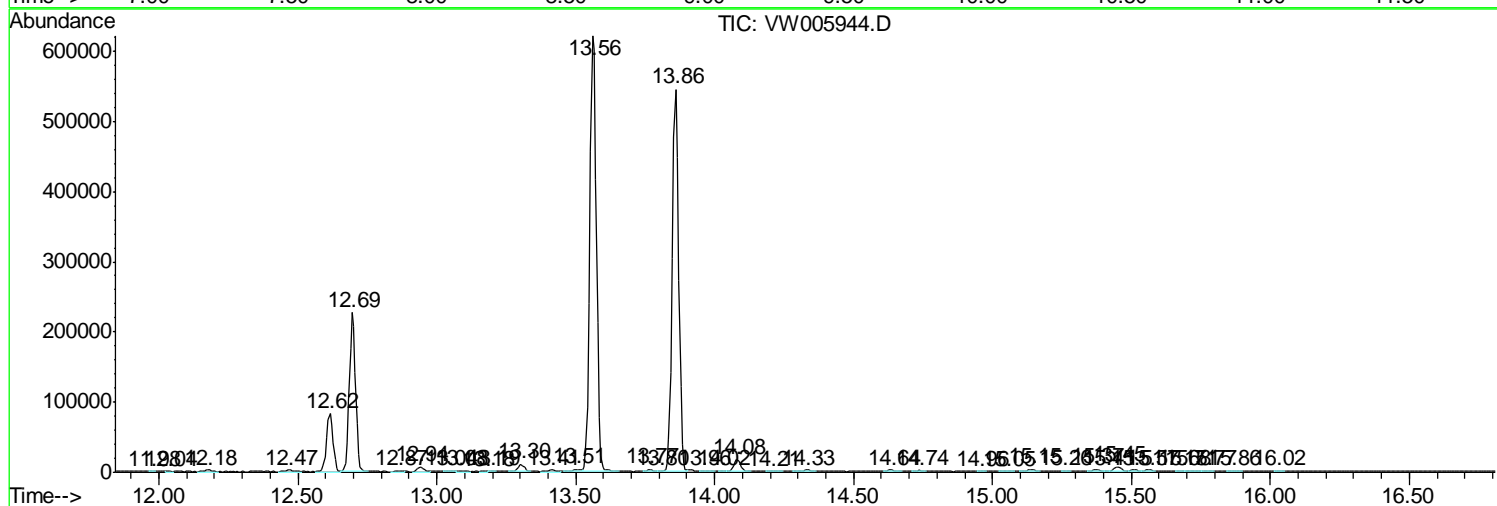
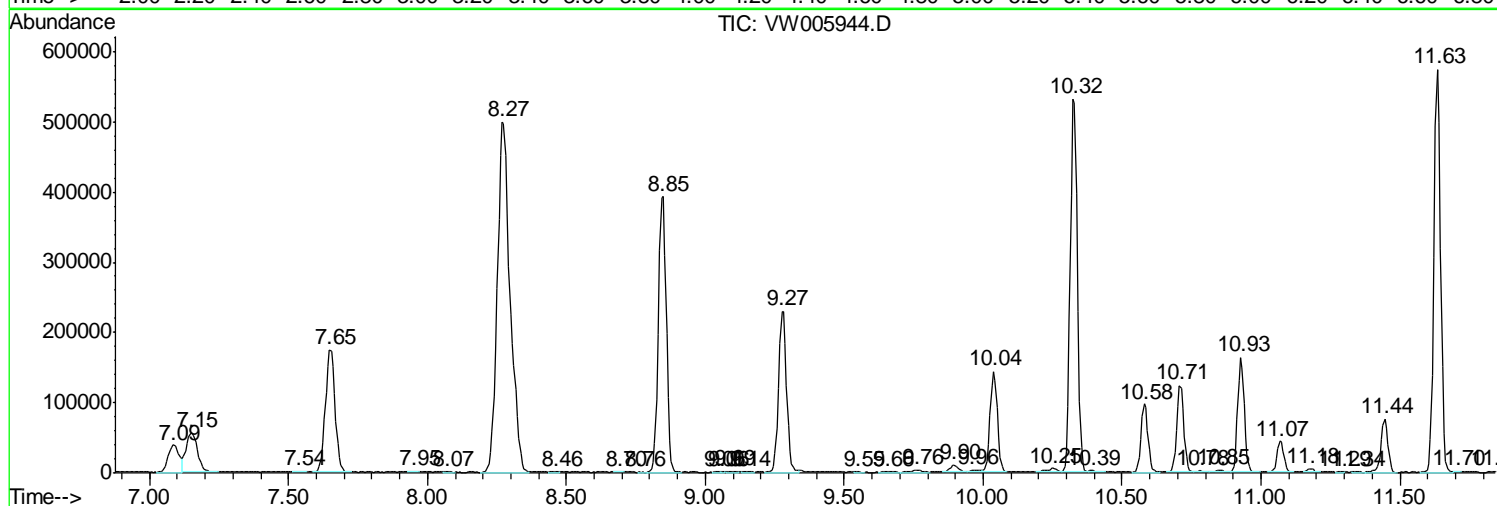
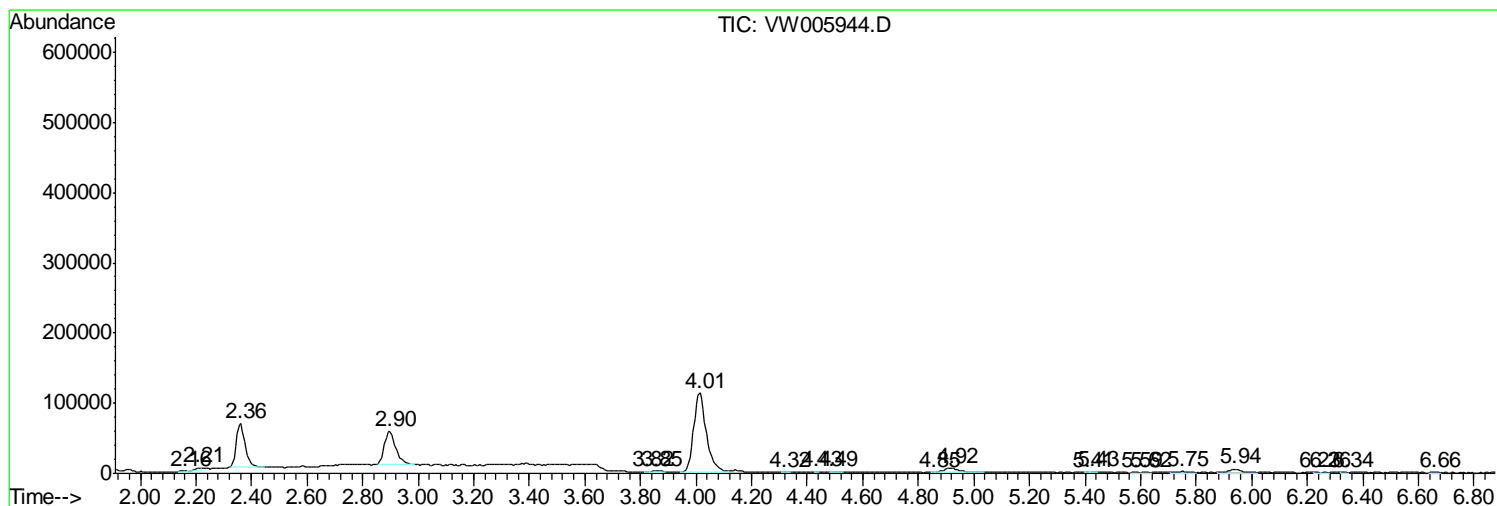
Sum of corrected areas: 9943060

Data Path : Z:\VOASRV\HPCHEM1\MSVOA W\DATA\VW100918\
 Data File : VW005944.D
 Acq On : 09 Oct 2018 16:02
 Operator : SY/AP
 Sample : J5182-20
 Misc : 5.00G/10ML/MSVOA W/SOIL
 ALS Vial : 1 Sample Multiplier: 1

Instrument :
 MSVOA_W
 ClientSampled :
 VHBLK01

Quant Method : Z:\VOASRV\HPCHEM1\MSVOA_W\METHOD\SOM2WLM100918S.M
 Quant Title : VOC Analysis

TIC Library : C:\DATABASE\NIST11.L
 TIC Integration Parameters: LSCINT.P



Data Path : Z:\VOASRV\HPCHEM1\MSVOA_W\DATA\VW100918\
Data File : VW005944.D
Acq On : 09 Oct 2018 16:02
Operator : SY/AP
Sample : J5182-20
Misc : 5.00G/10ML/MSVOA_W/SOIL
ALS Vial : 1 Sample Multiplier: 1

Instrument :
MSVOA_W
ClientSampleId :
VHBLK01

Quant Method : Z:\VOASRV\HPCHEM1\MSVOA_W\METHOD\SOM2WLM100918S.M
Quant Title : VOC Analysis

TIC Library : C:\DATABASE\NIST11.L
TIC Integration Parameters: LSCINT.P

No Library Search Compounds Detected

Data Path : Z:\VOASRV\HPCHEM1\MSVOA_W\DATA\VW100918\
Data File : VW005944.D
Acq On : 09 Oct 2018 16:02
Operator : SY/AP
Sample : J5182-20
Misc : 5.00G/10ML/MSVOA_W/SOIL
ALS Vial : 1 Sample Multiplier: 1

Instrument :
MSVOA_W
ClientSampleId :
VHBLK01

Quant Method : Z:\VOASRV\HPCHEM1\MSVOA_W\METHOD\SOM2WLM100918S.M
Quant Title : VOC Analysis

TIC Library : C:\DATABASE\NIST11.L
TIC Integration Parameters: LSCINT.P

TIC Top Hit name	RT	EstConc	Units	Response	--Internal Standard--			
					#	RT	Resp	Conc
