

Data Path : Z:\VOASRV\HPCHEM1\MSVOA W\DATA\VW100920\  
 Data File : VW016846.D  
 Acq On : 08 Oct 2020 10:59  
 Operator : SY/VA  
 Sample : VW1009SBL01  
 Misc : 5.00G/10ML/MSVOA W/SOIL  
 ALS Vial : 4 Sample Multiplier: 1

**Instrument :**  
 MSVOA\_W  
**Client Sampled :**  
 VBLK28

**Manual Integrations**  
**APPROVED**  
 MMDadoda  
 10/12/2020 1:56:41 PM

Quant Time: Oct 09 08:39:15 2020  
 Quant Method : Z:\VOASRV\HPCHEM1\MSVOA\_W\METHOD\SOM2WLM100720S.M  
 Quant Title : VOC Analysis  
 QLast Update : Thu Oct 08 11:39:44 2020  
 Response via : Initial Calibration

Internal Standards	R.T.	QIon	Response	Conc	Units	Dev(Min)
1) 1,4-Difluorobenzene	8.84	114	533819	25.00	ug/L	0.00
28) Chlorobenzene-d5	11.63	117	480138	25.00	ug/L	0.00
60) 1,4-Dichlorobenzene-d4	13.56	152	232647	25.00	ug/L	0.00

System Monitoring Compounds

4) Vinyl Chloride-d3	2.35	65	120314	22.85	ug/L	0.00
Spiked Amount	25.000	Range	30 - 150	Recovery	=	91.40%
7) Chloroethane-d5	2.89	69	101466	22.97	ug/L	0.00
Spiked Amount	25.000	Range	30 - 150	Recovery	=	91.88%
10) 1,1-Dichloroethene-d2	4.03	63	179745	16.07	ug/L	0.00
Spiked Amount	25.000	Range	45 - 110	Recovery	=	64.28%
20) 2-Butanone-d5	7.08	46	49529	41.52	ug/L	0.00
Spiked Amount	50.000	Range	20 - 135	Recovery	=	83.04%
24) Chloroform-d	7.65	84	254507	22.59	ug/L	0.00
Spiked Amount	25.000	Range	40 - 150	Recovery	=	90.36%
26) 1,2-Dichloroethane-d4	8.31	65	125206	23.01	ug/L	0.00
Spiked Amount	25.000	Range	70 - 130	Recovery	=	92.04%
29) Benzene-d6	8.27	84	522418	23.96	ug/L	0.00
Spiked Amount	25.000	Range	20 - 135	Recovery	=	95.84%
33) 1,2-Dichloropropane-d6	9.27	67	143280	24.45	ug/L	0.00
Spiked Amount	25.000	Range	70 - 120	Recovery	=	97.80%
37) Toluene-d8	10.32	98	501035	24.35	ug/L	0.00
Spiked Amount	25.000	Range	30 - 130	Recovery	=	97.40%
38) trans-1,3-Dichloropropene-	10.58	79	56444	21.84	ug/L	0.00
Spiked Amount	25.000	Range	30 - 135	Recovery	=	87.36%
39) 2-Hexanone-d5	10.93	63	40854	45.08	ug/L	0.00
Spiked Amount	50.000	Range	20 - 135	Recovery	=	90.16%
48) 1,1,2,2-Tetrachloroethane-	12.69	84	105716	22.33	ug/L	0.00
Spiked Amount	25.000	Range	45 - 120	Recovery	=	89.32%
61) 1,2-Dichlorobenzene-d4	13.86	152	177329	24.03	ug/L	0.00
Spiked Amount	25.000	Range	75 - 120	Recovery	=	96.12%

Target Compounds					Ovalue
16) Methylene chloride	4.92	84	9952m	1.351	ug/L

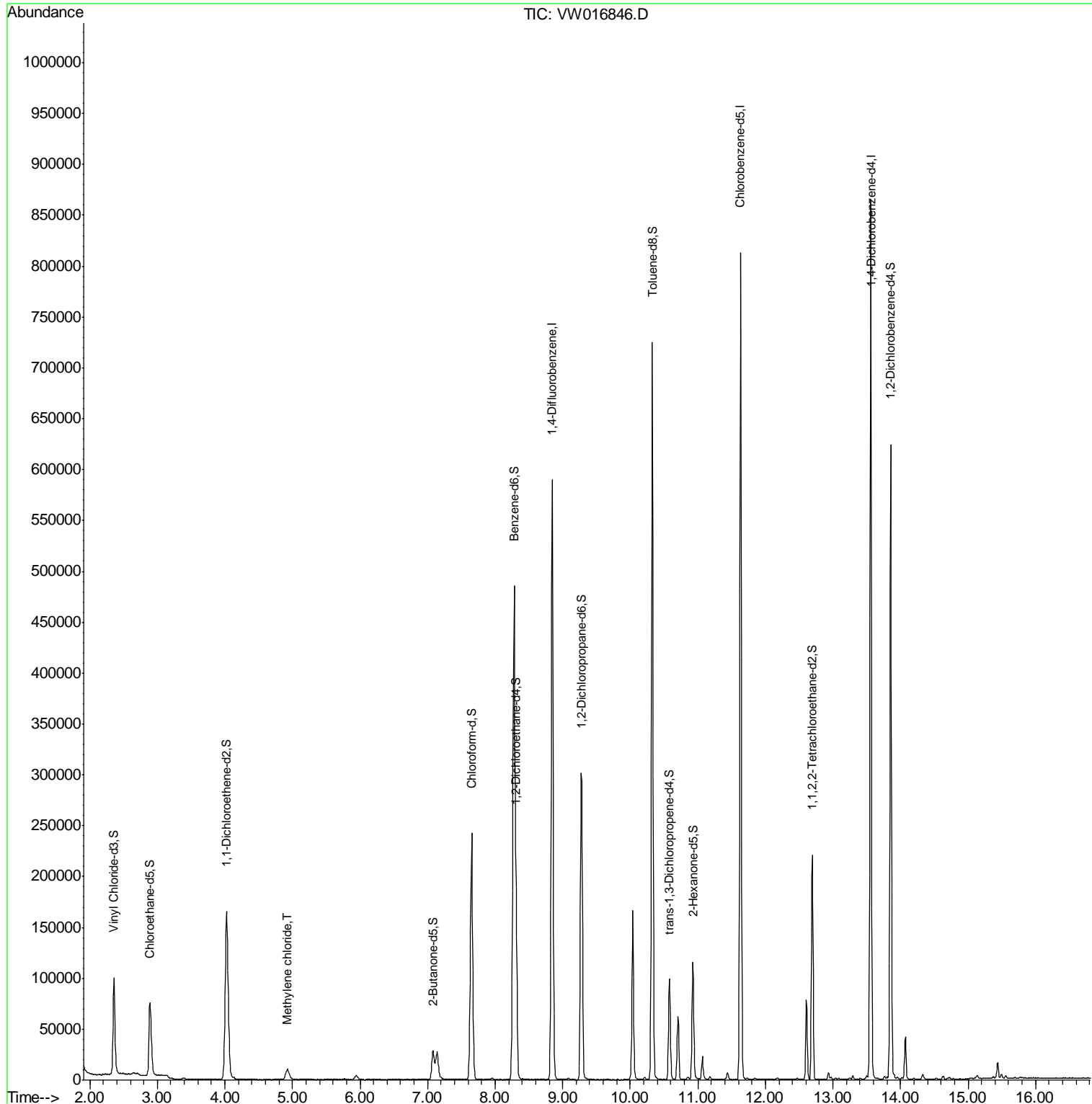
(#) = qualifier out of range (m) = manual integration (+) = signals summed

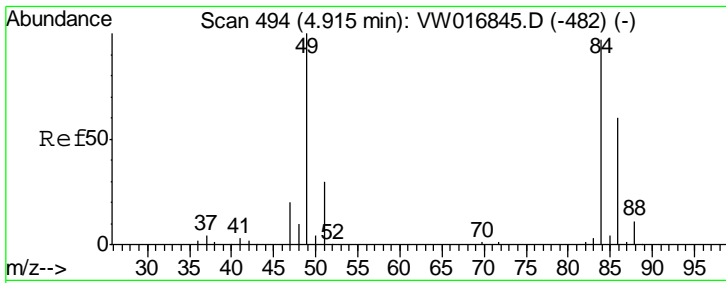
Data Path : Z:\VOASRV\HPCHEM1\MSVOA W\DATA\VW100920\  
 Data File : VW016846.D  
 Acq On : 08 Oct 2020 10:59  
 Operator : SY/VA  
 Sample : VW1009SBL01  
 Misc : 5.00G/10ML/MSVOA W/SOIL  
 ALS Vial : 4 Sample Multiplier: 1

**Instrument :**  
 MSVOA\_W  
**Client Sampled :**  
 VBLK28

**Manual Integrations**  
**APPROVED**  
 MMDadoda  
 10/12/2020 1:56:41 PM

Quant Time: Oct 09 08:39:15 2020  
 Quant Method : Z:\VOASRV\HPCHEM1\MSVOA\_W\METHOD\SOM2WLM100720S.M  
 Quant Title : VOC Analysis  
 QLast Update : Thu Oct 08 11:39:44 2020  
 Response via : Initial Calibration





#16  
 Methylene chloride  
 Concen: 1.351 ug/L m  
 RT: 4.92 min Scan# 494  
 Delta R.T. -0.00 min  
 Lab File: VW016846.D  
 Acq: 08 Oct 2020 10:59

**Instrument :**  
 MSVOA\_W  
**ClientSampled :**  
 VBLK28

Tot Ion: 84 Resp: 9952

Ion	Ratio	Lower	Upper
84	100		
49	97.8	73.1	135.8
86	72.0	46.0	85.4

**Manual Integrations**  
**APPROVED**  
 MMDadoda  
 10/12/2020 1:56:41 PM

