

Data Path : Z:\VOASRV\HPCHEM1\MSVOA W\DATA\VW101018\
 Data File : VW005981.D
 Acq On : 10 Oct 2018 12:10
 Operator : SY/AP
 Sample : J5302-05
 Misc : 5.00G/5ML/MSVOA W/SOIL
 ALS Vial : 44 Sample Multiplier: 1

Instrument :
 MSVOA_W
 ClientSampleId :
 SB-5-(14.5-15)

Integration Parameters: RTEINT.P
 Integrator: RTE
 Smoothing : ON Filtering: 5
 Sampling : 1 Min Area: 3 % of largest Peak
 Start Thrs: 0.2 Max Peaks: 100
 Stop Thrs : 0 Peak Location: TOP

If leading or trailing edge < 100 prefer < Baseline drop else tangent >
 Peak separation: 5

Method : Z:\VOASRV\HPCHEM1\MSVOA_W\METHOD\82W100818S.M
 Title : SW846 8260

Signal : TIC

peak #	R.T. min	first scan	max scan	last scan	PK TY	peak height	corr. area	corr. % max.	% of total
1	4.922	482	495	509	rBV3	8229	30463	2.78%	0.475%
2	7.153	849	861	876	rBV	15864	47872	4.37%	0.746%
3	7.885	972	981	986	rBV2	157123	377002	34.43%	5.877%
4	7.952	986	992	1001	rVB	315323	690065	63.03%	10.758%
5	8.311	1035	1051	1062	rBV	142925	331045	30.24%	5.161%
6	8.842	1128	1138	1149	rBV	415112	835392	76.30%	13.024%
7	9.890	1303	1310	1319	rBV4	5398	12790	1.17%	0.199%
8	10.329	1374	1382	1390	rBV	602955	1094840	100.00%	17.069%
9	11.067	1498	1503	1510	rBV	9326	15081	1.38%	0.235%
10	11.445	1561	1565	1571	rVB2	6263	11126	1.02%	0.173%
11	11.634	1589	1596	1617	rVB	607358	1027423	93.84%	16.018%
12	12.621	1750	1758	1768	rVB	523535	840279	76.75%	13.100%
13	13.566	1905	1913	1923	rBV	664008	1081725	98.80%	16.864%
14	14.079	1993	1997	2006	rVB2	11885	19256	1.76%	0.300%

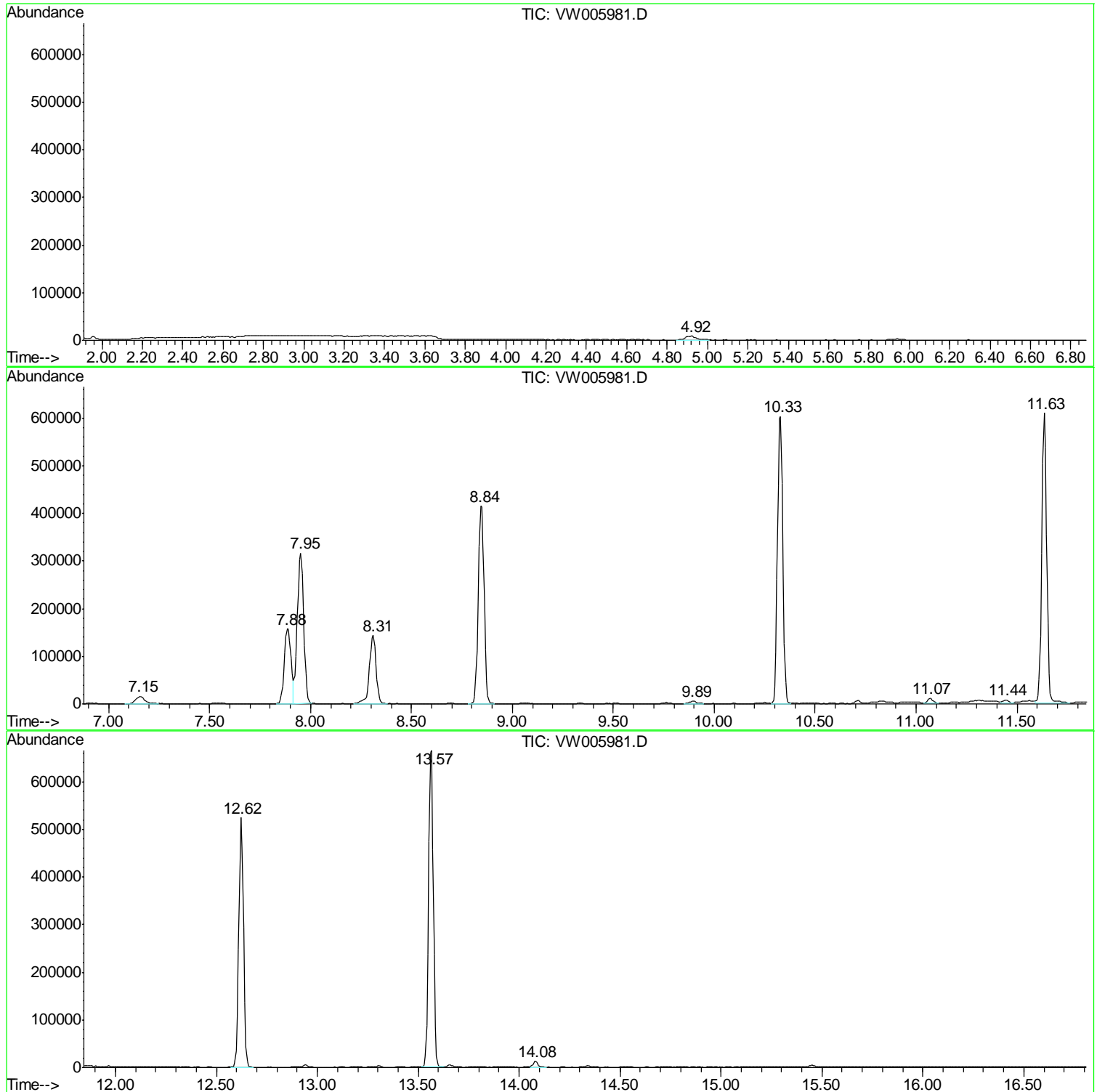
Sum of corrected areas: 6414359

Data Path : Z:\VOASRV\HPCHEM1\MSVOA W\DATA\VW101018\
Data File : VW005981.D
Acq On : 10 Oct 2018 12:10
Operator : SY/AP
Sample : J5302-05
Misc : 5.00G/5ML/MSVOA W/SOIL
ALS Vial : 44 Sample Multiplier: 1

Instrument :
MSVOA_W
ClientSampleId :
SB-5-(14.5-15)

Quant Method : Z:\VOASRV\HPCHEM1\MSVOA_W\METHOD\82W100818S.M
Quant Title : SW846 8260

TIC Library : C:\DATABASE\NIST11.L
TIC Integration Parameters: LSCINT.P



Data Path : Z:\VOASRV\HPCHEM1\MSVOA_W\DATA\VW101018\
Data File : VW005981.D
Acq On : 10 Oct 2018 12:10
Operator : SY/AP
Sample : J5302-05
Misc : 5.00G/5ML/MSVOA_W/SOIL
ALS Vial : 44 Sample Multiplier: 1

Instrument :
MSVOA_W
ClientSampleId :
SB-5-(14.5-15)

Quant Method : Z:\VOASRV\HPCHEM1\MSVOA_W\METHOD\82W100818S.M
Quant Title : SW846 8260

TIC Library : C:\DATABASE\NIST11.L
TIC Integration Parameters: LSCINT.P

No Library Search Compounds Detected

Data Path : Z:\VOASRV\HPCHEM1\MSVOA_W\DATA\VW101018\
Data File : VW005981.D
Acq On : 10 Oct 2018 12:10
Operator : SY/AP
Sample : J5302-05
Misc : 5.00G/5ML/MSVOA_W/SOIL
ALS Vial : 44 Sample Multiplier: 1

Instrument :
MSVOA_W
ClientSampleId :
SB-5-(14.5-15)

Quant Method : Z:\VOASRV\HPCHEM1\MSVOA_W\METHOD\82W100818S.M
Quant Title : SW846 8260

TIC Library : C:\DATABASE\NIST11.L
TIC Integration Parameters: LSCINT.P

TIC Top Hit name	RT	EstConc	Units	Response	--Internal Standard--			
					#	RT	Resp	Conc
