

Data Path : Z:\voasrv\HPCHEM1\MSVOA_W\Data\VW101024\
 Data File : VW030528.D
 Acq On : 10 Oct 2024 23:30
 Operator : SY/MD
 Sample : P4351-06
 Misc : 5.44g/10mL/MSVOA_W/SOIL/A
 ALS Vial : 37 Sample Multiplier: 1

Instrument :
 MSVOA_W
 ClientSampleId :
 EOLG8

Integration Parameters: LSCINT.P

Integrator: RTE
 Smoothing : OFF
 Sampling : 1
 Start Thrs : 0.2
 Stop Thrs : 0

Filtering: 5
 Min Area: 0 % of largest Peak
 Max Peaks: 100
 Peak Location: TOP

If leading or trailing edge < 100 prefer < Baseline drop else tangent >
 Peak separation: 5

Method : Z:\voasrv\HPCHEM1\MSVOA_W\Method\SFAMWLM100924SMA.M
 Title : SFAM01.0

Signal : TIC: VW030528.D\data.ms

peak #	R.T. min	first scan	max scan	last scan	PK TY	peak height	corr. area	corr. % max.	% of total
1	2.363	72	78	93	rBV	83510	250262	15.09%	2.560%
2	2.899	160	166	185	rVB	79941	243127	14.66%	2.487%
3	3.442	253	255	256	rBV	727	323	0.02%	0.003%
4	3.887	325	328	335	rBV7	843	1832	0.11%	0.019%
5	3.942	335	337	338	rBV2	512	410	0.02%	0.004%
6	4.027	339	351	382	rVV2	137652	562153	33.90%	5.750%
7	4.655	452	454	455	rBV2	764	459	0.03%	0.005%
8	4.704	460	462	464	rBV2	485	506	0.03%	0.005%
9	4.734	464	467	468	rBV3	700	544	0.03%	0.006%
10	4.801	477	478	479	rBV	961	399	0.02%	0.004%
11	4.820	479	481	483	rVV3	584	342	0.02%	0.003%
12	4.923	492	498	499	rBV4	3631	6426	0.39%	0.066%
13	5.064	519	521	524	rBV3	894	1169	0.07%	0.012%
14	5.094	524	526	527	rBV2	1147	1099	0.07%	0.011%
15	5.307	559	561	562	rBV2	703	527	0.03%	0.005%
16	5.417	577	579	585	rVV6	846	963	0.06%	0.010%
17	5.496	587	592	593	rBV3	729	770	0.05%	0.008%
18	5.515	593	595	597	rVB3	843	624	0.04%	0.006%
19	5.649	614	617	618	rBV2	580	560	0.03%	0.006%
20	5.667	618	620	623	rVB3	828	851	0.05%	0.009%
21	5.734	629	631	632	rVB2	645	365	0.02%	0.004%
22	5.752	632	634	636	rBV3	572	646	0.04%	0.007%
23	5.880	653	655	658	rBV4	713	656	0.04%	0.007%
24	6.051	680	683	684	rBV3	500	613	0.04%	0.006%
25	6.191	703	706	707	rBV3	721	988	0.06%	0.010%
26	6.252	713	716	717	rBV3	547	701	0.04%	0.007%
27	6.350	730	732	735	rBV3	766	1000	0.06%	0.010%
28	6.411	740	742	743	rVV	957	722	0.04%	0.007%
29	6.429	743	745	746	rVB2	823	478	0.03%	0.005%
30	6.454	746	749	750	rVB2	808	590	0.04%	0.006%
31	6.490	750	755	756	rBV2	1018	868	0.05%	0.009%
32	6.551	762	765	766	rVB3	478	397	0.02%	0.004%
33	6.569	766	768	774	rVB5	937	1271	0.08%	0.013%
34	6.624	774	777	780	rBV2	707	893	0.05%	0.009%
35	6.710	789	791	793	rVB3	625	531	0.03%	0.005%
36	6.734	793	795	797	rBV3	968	838	0.05%	0.009%

Data Path : Z:\voasrv\HPCHEM1\MSVOA_W\Data\VW101024\
 Data File : VW030528.D
 Acq On : 10 Oct 2024 23:30
 Operator : SY/MD
 Sample : P4351-06
 Misc : 5.44g/10mL/MSVOA_W/SOIL/A
 ALS Vial : 37 Sample Multiplier: 1

Instrument :
 MSVOA_W
 ClientSampleId :
 EOLG8

Integration Parameters: LSCINT.P

Integrator: RTE
 Smoothing : OFF
 Sampling : 1
 Start Thrs: 0.2
 Stop Thrs : 0

Filtering: 5
 Min Area: 0 % of largest Peak
 Max Peaks: 100
 Peak Location: TOP

If leading or trailing edge < 100 prefer < Baseline drop else tangent >
 Peak separation: 5

Method : Z:\voasrv\HPCHEM1\MSVOA_W\Method\SFAMWLM100924SMA.M
 Title : SFAM01.0

37	6.764	797	800	801	rBV3	696	681	0.04%	0.007%
38	6.856	814	815	816	rBV	678	362	0.02%	0.004%
39	7.081	844	852	857	rBV	47108	126349	7.62%	1.292%
40	7.386	901	902	904	rBV2	840	744	0.04%	0.008%
41	7.648	934	945	960	rBV	287117	710141	42.83%	7.263%
42	7.959	993	996	997	rBV3	1197	942	0.06%	0.010%
43	8.020	1003	1006	1007	rVB3	810	643	0.04%	0.007%
44	8.045	1007	1010	1011	rBV3	519	514	0.03%	0.005%
45	8.136	1023	1025	1027	rVB3	673	436	0.03%	0.004%
46	8.154	1027	1028	1031	rBV2	792	742	0.04%	0.008%
47	8.276	1037	1048	1068	rBV2	549599	1658150	100.00%	16.959%
48	8.520	1086	1088	1090	rBV3	1070	1030	0.06%	0.011%
49	8.569	1094	1096	1098	rBV3	1231	1196	0.07%	0.012%
50	8.843	1132	1141	1150	rBV	448451	881731	53.18%	9.018%
51	9.191	1196	1198	1199	rBV2	662	308	0.02%	0.003%
52	9.270	1203	1211	1221	rVV	368352	751694	45.33%	7.688%
53	9.618	1266	1268	1271	rBV2	961	977	0.06%	0.010%
54	9.685	1273	1279	1280	rBV5	1267	1871	0.11%	0.019%
55	9.874	1309	1310	1312	rBV	989	742	0.04%	0.008%
56	10.032	1329	1336	1346	rBV	179427	325203	19.61%	3.326%
57	10.319	1375	1383	1401	rBV	670237	1207801	72.84%	12.353%
58	10.575	1419	1425	1440	rVB	105516	194209	11.71%	1.986%
59	10.697	1440	1445	1452	rBV2	20055	36643	2.21%	0.375%
60	10.800	1460	1462	1463	rBV2	1269	738	0.04%	0.008%
61	10.922	1475	1482	1497	rBV	170593	297335	17.93%	3.041%
62	11.062	1500	1505	1518	rVB	17130	31786	1.92%	0.325%
63	11.629	1590	1598	1611	rBV	503258	846484	51.05%	8.658%
64	12.007	1658	1660	1661	rBV2	779	465	0.03%	0.005%
65	12.081	1668	1672	1674	rBV4	895	1168	0.07%	0.012%
66	12.117	1676	1678	1679	rVB	1061	549	0.03%	0.006%
67	12.471	1729	1736	1740	rVB6	2194	4143	0.25%	0.042%
68	12.507	1740	1742	1744	rBV2	543	511	0.03%	0.005%
69	12.526	1744	1745	1746	rBV	715	433	0.03%	0.004%
70	12.599	1751	1757	1765	rBV2	12109	21191	1.28%	0.217%
71	12.690	1765	1772	1780	rBV	252675	419792	25.32%	4.294%
72	12.782	1786	1787	1789	rVB2	1144	486	0.03%	0.005%
73	12.806	1789	1791	1792	rVB2	600	317	0.02%	0.003%
74	12.928	1803	1811	1819	rBV8	2395	6295	0.38%	0.064%
75	13.080	1832	1836	1839	rBV4	1141	1902	0.11%	0.019%
76	13.105	1839	1840	1843	rBV3	476	622	0.04%	0.006%

Data Path : Z:\voasrv\HPCHEM1\MSVOA_W\Data\VW101024\
 Data File : VW030528.D
 Acq On : 10 Oct 2024 23:30
 Operator : SY/MD
 Sample : P4351-06
 Misc : 5.44g/10mL/MSVOA_W/SOIL/A
 ALS Vial : 37 Sample Multiplier: 1

Instrument :
 MSVOA_W
 ClientSampleId :
 EOLG8

Integration Parameters: LSCINT.P

Integrator: RTE
 Smoothing : OFF
 Sampling : 1
 Start Thrs : 0.2
 Stop Thrs : 0

Filtering: 5
 Min Area: 0 % of largest Peak
 Max Peaks: 100
 Peak Location: TOP

If leading or trailing edge < 100 prefer < Baseline drop else tangent >
 Peak separation: 5

Method : Z:\voasrv\HPCHEM1\MSVOA_W\Method\SFAMWLM100924SMA.M
 Title : SFAM01.0

77	13.160	1847	1849	1851	rVV3	856	529	0.03%	0.005%
78	13.294	1868	1871	1877	rVB8	1310	2199	0.13%	0.022%
79	13.397	1886	1888	1893	rVB5	2129	3112	0.19%	0.032%
80	13.458	1893	1898	1900	rBV6	1190	1713	0.10%	0.018%
81	13.495	1902	1904	1906	rVV3	1054	978	0.06%	0.010%
82	13.556	1907	1914	1926	rVV	291504	467951	28.22%	4.786%
83	13.751	1941	1946	1949	rBV6	1721	3250	0.20%	0.033%
84	13.849	1955	1962	1974	rBV	397777	645283	38.92%	6.600%
85	14.062	1992	1997	2003	rBV2	5890	9512	0.57%	0.097%
86	14.464	2060	2063	2064	rBV3	768	874	0.05%	0.009%
87	14.586	2081	2083	2084	rBV2	571	434	0.03%	0.004%
88	14.617	2087	2088	2094	rVB4	1135	1286	0.08%	0.013%
89	14.659	2094	2095	2096	rBV	655	382	0.02%	0.004%
90	14.720	2101	2105	2107	rVB4	1773	2207	0.13%	0.023%
91	14.745	2107	2109	2112	rBV3	691	767	0.05%	0.008%
92	14.793	2116	2117	2119	rVB2	761	411	0.02%	0.004%
93	14.824	2119	2122	2124	rBV4	894	1308	0.08%	0.013%
94	15.007	2150	2152	2155	rBV4	676	677	0.04%	0.007%
95	15.074	2161	2163	2166	rBV3	1157	1526	0.09%	0.016%
96	15.336	2204	2206	2208	rBV2	775	767	0.05%	0.008%
97	15.428	2218	2221	2227	rVB3	5494	7878	0.48%	0.081%
98	15.720	2267	2269	2270	rBV	833	384	0.02%	0.004%
99	16.092	2327	2330	2331	rBV3	962	1011	0.06%	0.010%
100	16.464	2389	2391	2392	rBV	1140	711	0.04%	0.007%

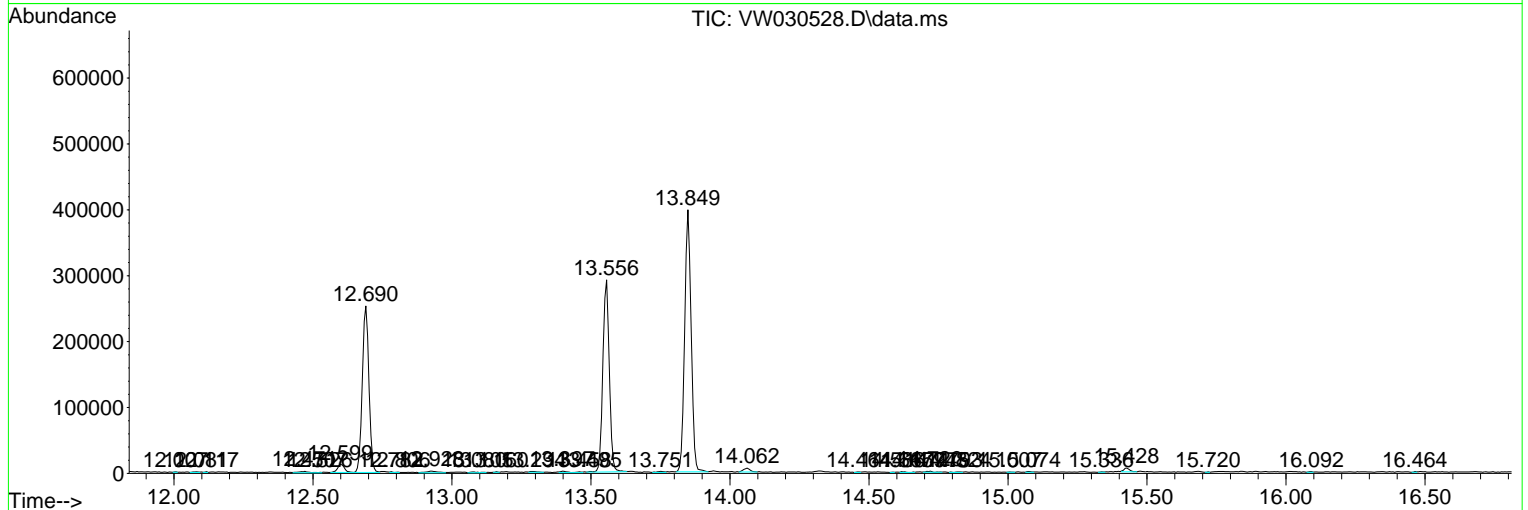
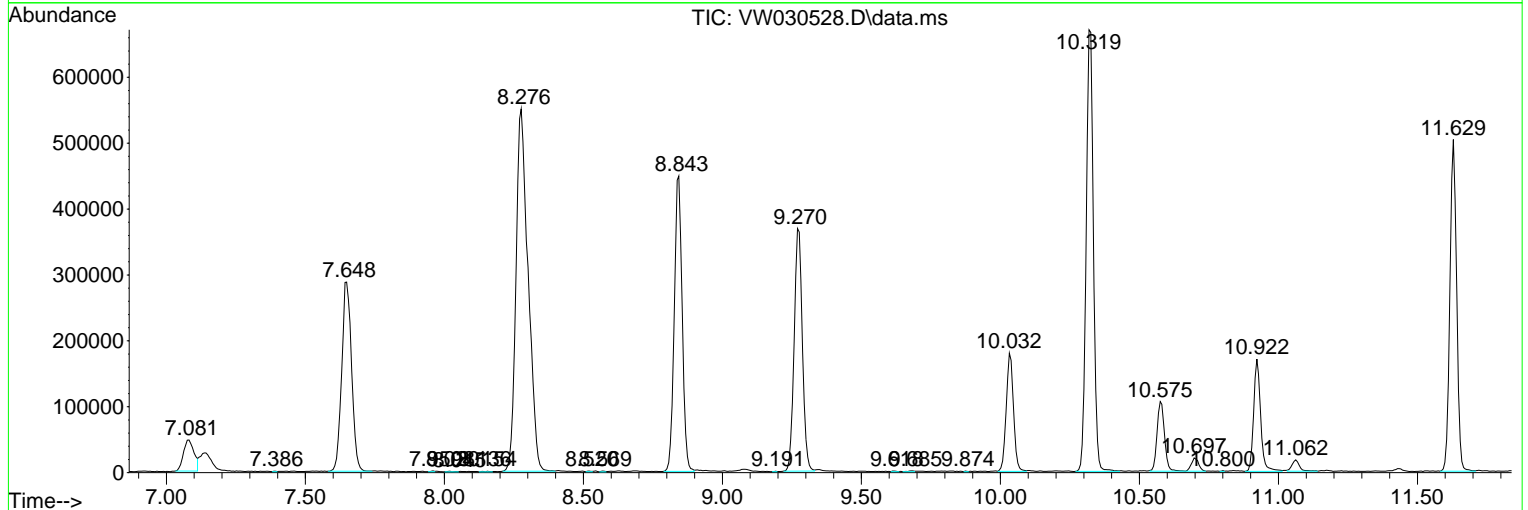
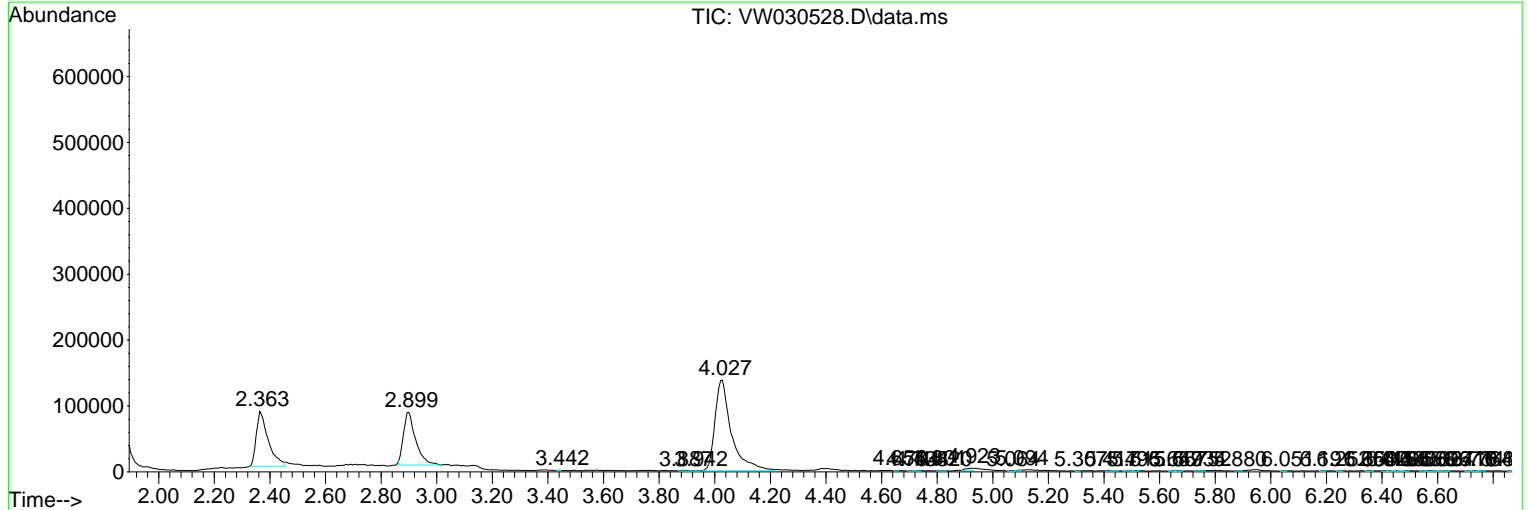
Sum of corrected areas: 9777379

Data Path : Z:\voasrv\HPCHEM1\MSVOA_W\Data\VW101024\
 Data File : VW030528.D
 Acq On : 10 Oct 2024 23:30
 Operator : SY/MD
 Sample : P4351-06
 Misc : 5.44g/10mL/MSVOA_W/SOIL/A
 ALS Vial : 37 Sample Multiplier: 1

Instrument :
 MSVOA_W
 ClientSampleId :
 EOLG8

Quant Method : Z:\voasrv\HPCHEM1\MSVOA_W\Method\SFAMWLM100924SMA.M
 Quant Title : SFAM01.0

TIC Library : C:\Database\NIST20.L
 TIC Integration Parameters: LSCINT.P



Library Search Compound Report

Data Path : Z:\voasrv\HPCHEM1\MSVOA_W\Data\VW101024\
Data File : VW030528.D
Acq On : 10 Oct 2024 23:30
Operator : SY/MD
Sample : P4351-06
Misc : 5.44g/10mL/MSVOA_W/SOIL/A
ALS Vial : 37 Sample Multiplier: 1

Instrument :
MSVOA_W
ClientSampleId :
EOLG8

Quant Method : Z:\voasrv\HPCHEM1\MSVOA_W\Method\SFAMWLM100924SMA.M
Quant Title : SFAM01.0

TIC Library : C:\Database\NIST20.L
TIC Integration Parameters: LSCINT.P

No Library Search Compounds Detected

Data Path : Z:\voasrv\HPCHEM1\MSVOA_W\Data\VW101024\
Data File : VW030528.D
Acq On : 10 Oct 2024 23:30
Operator : SY/MD
Sample : P4351-06
Misc : 5.44g/10mL/MSVOA_W/SOIL/A
ALS Vial : 37 Sample Multiplier: 1

Instrument :
MSVOA_W
ClientSampleId :
EOLG8

Quant Method : Z:\voasrv\HPCHEM1\MSVOA_W\Method\SFAMWLM100924SMA.M
Quant Title : SFAM01.0

TIC Library : C:\Database\NIST20.L
TIC Integration Parameters: LSCINT.P

TIC Top Hit name	RT	EstConc	Units	Response	--Internal Standard--		
					#	RT	Resp Conc
