

Data Path : Z:\VOASRV\HPCHEM1\MSVOA W\DATA\VW101118\  
 Data File : VW006015.D  
 Acq On : 11 Oct 2018 04:35  
 Operator : SY/AP  
 Sample : J5287-13RE  
 Misc : 7.06G/5ML/MSVOA W/SOIL  
 ALS Vial : 38 Sample Multiplier: 1

Instrument :  
 MSVOA\_W  
 ClientSampleId :  
 TRACK-D-7RE

Quant Time: Oct 11 06:57:33 2018  
 Quant Method : Z:\VOASRV\HPCHEM1\MSVOA\_W\METHOD\82W100818S.M  
 Quant Title : SW846 8260  
 QLast Update : Tue Oct 09 02:14:04 2018  
 Response via : Initial Calibration

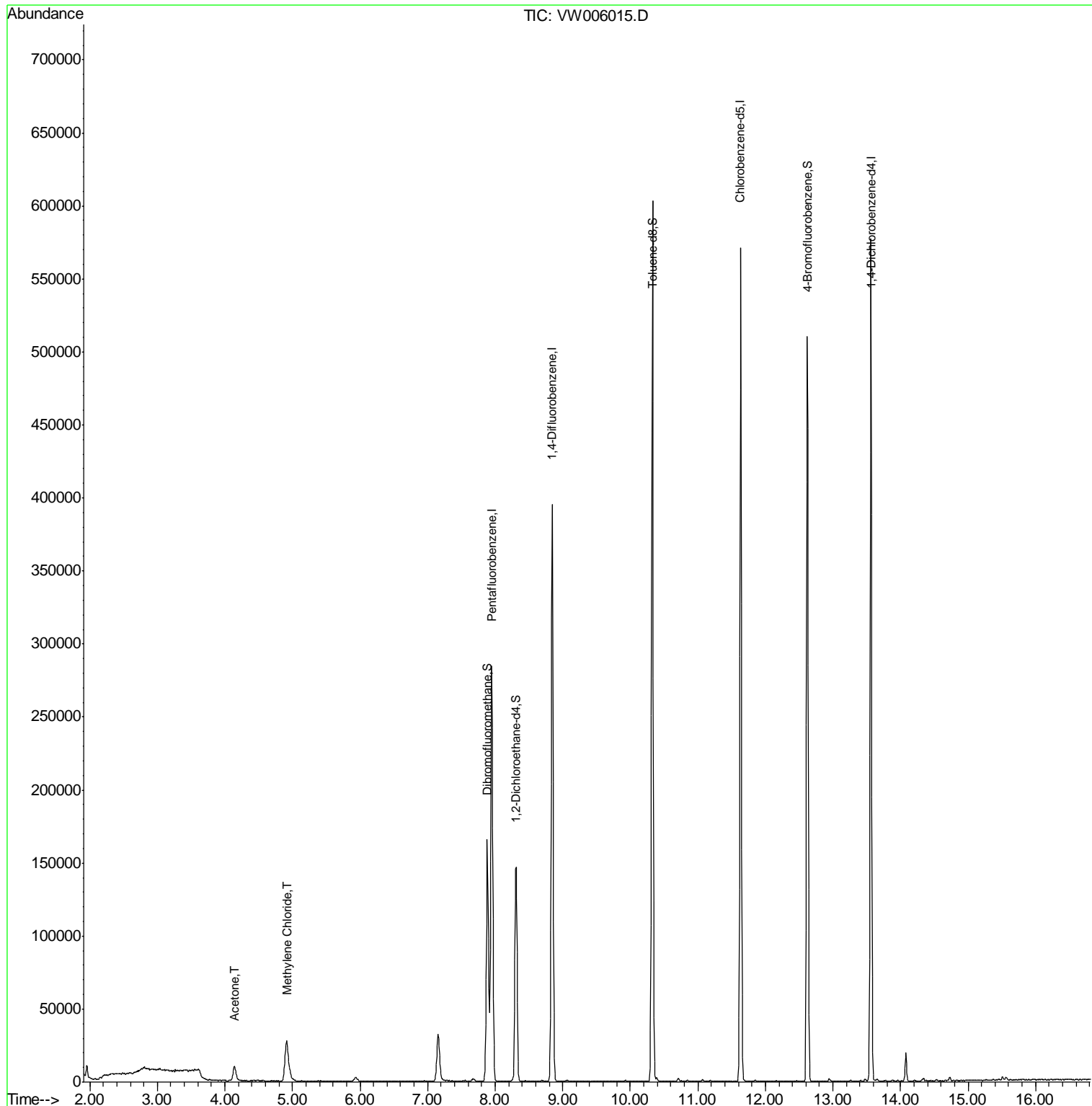
Internal Standards	R.T.	QIon	Response	Conc	Units	Dev(Min)
1) Pentafluorobenzene	7.95	168	224137	50.00	ug/l	0.00
34) 1,4-Difluorobenzene	8.85	114	355401	50.00	ug/l	0.00
63) Chlorobenzene-d5	11.63	117	321943	50.00	ug/l	0.00
72) 1,4-Dichlorobenzene-d4	13.56	152	160054	50.00	ug/l	0.00
System Monitoring Compounds						
33) 1,2-Dichloroethane-d4	8.31	65	117519	54.01	ug/l	0.00
Spiked Amount	50.000		Recovery	=	108.02%	
35) Dibromofluoromethane	7.88	113	114790	50.59	ug/l	0.00
Spiked Amount	50.000		Recovery	=	101.18%	
50) Toluene-d8	10.33	98	418660	47.96	ug/l	0.00
Spiked Amount	50.000		Recovery	=	95.92%	
62) 4-Bromofluorobenzene	12.62	95	147951	44.54	ug/l	0.00
Spiked Amount	50.000		Recovery	=	89.08%	
Target Compounds						
16) Acetone	4.14	43	20551	47.286	ug/l	98
20) Methylene Chloride	4.91	84	27132	12.460	ug/l	94

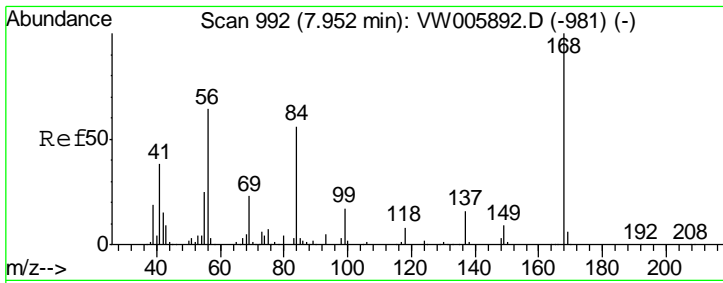
(#) = qualifier out of range (m) = manual integration (+) = signals summed

Data Path : Z:\VOASRV\HPCHEM1\MSVOA W\DATA\VW101118\  
 Data File : VW006015.D  
 Acq On : 11 Oct 2018 04:35  
 Operator : SY/AP  
 Sample : J5287-13RE  
 Misc : 7.06G/5ML/MSVOA W/SOIL  
 ALS Vial : 38 Sample Multiplier: 1

Instrument :  
 MSVOA\_W  
 ClientSampleId :  
 TRACK-D-7RE

Quant Time: Oct 11 06:57:33 2018  
 Quant Method : Z:\VOASRV\HPCHEM1\MSVOA\_W\METHOD\82W100818S.M  
 Quant Title : SW846 8260  
 QLast Update : Tue Oct 09 02:14:04 2018  
 Response via : Initial Calibration

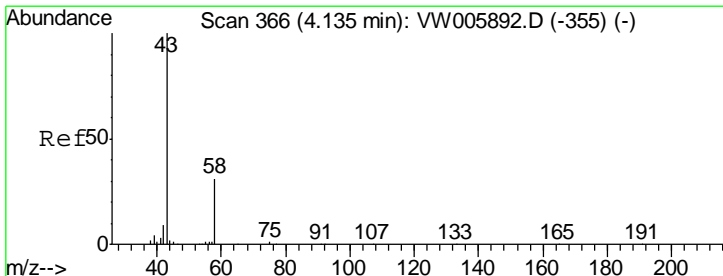
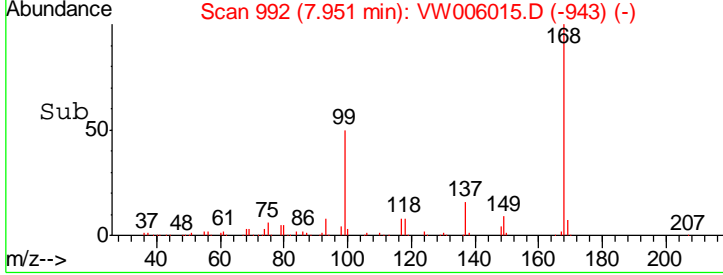
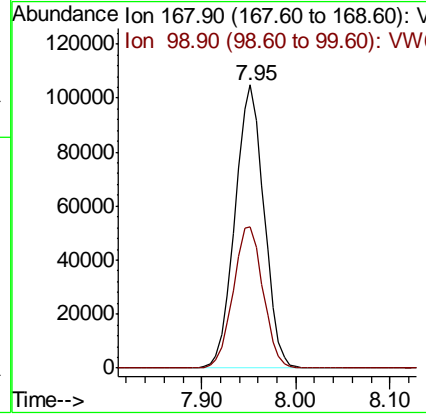
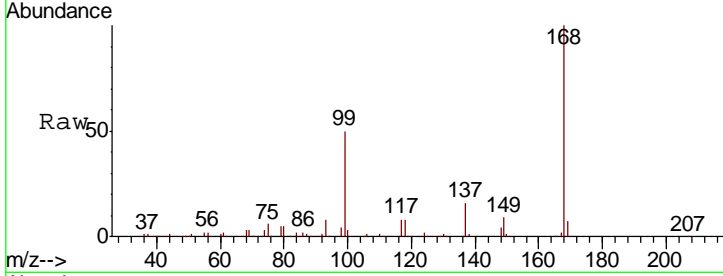




#1  
 Pentafluorobenzene  
 Concen: 50.000 ug/l  
 RT: 7.95 min Scan# 992  
 Delta R.T. -0.00 min  
 Lab File: VW006015.D  
 Acq: 11 Oct 2018 04:35

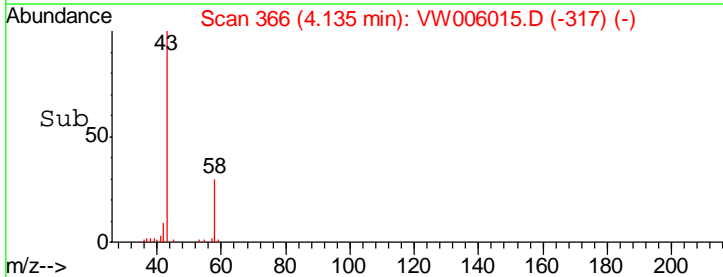
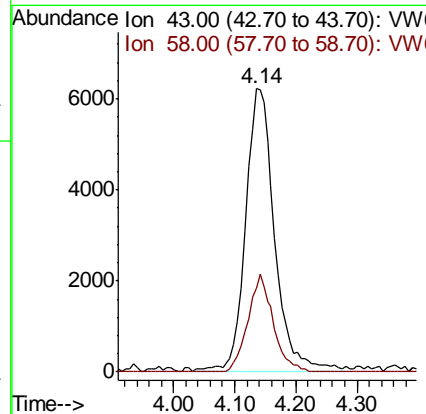
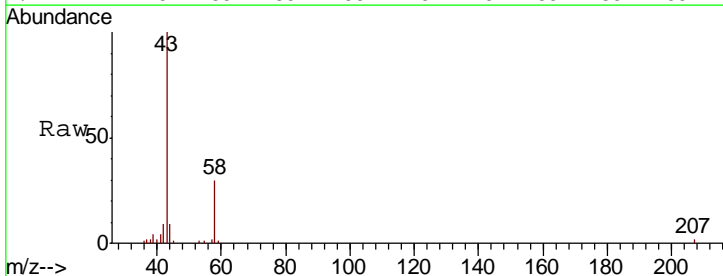
Instrument :  
 MSVOA\_W  
 ClientSampleId :  
 TRACK-D-7RE

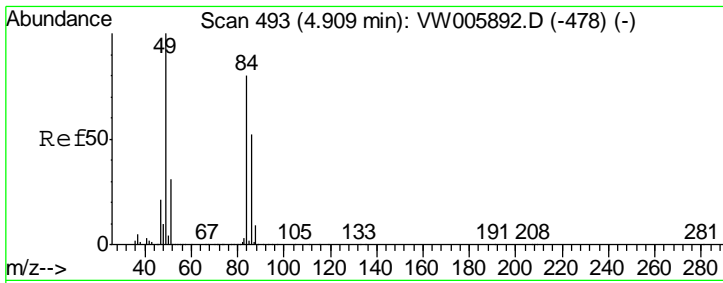
Tgt Ion: 168 Resp: 224137  
 Ion Ratio Lower Upper  
 168 100  
 99 49.8 40.9 61.3



#16  
 Acetone  
 Concen: 47.286 ug/l  
 RT: 4.14 min Scan# 366  
 Delta R.T. -0.00 min  
 Lab File: VW006015.D  
 Acq: 11 Oct 2018 04:35

Tgt Ion: 43 Resp: 20551  
 Ion Ratio Lower Upper  
 43 100  
 58 29.7 24.7 37.1

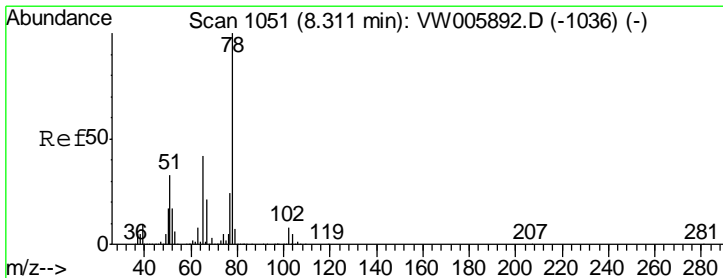
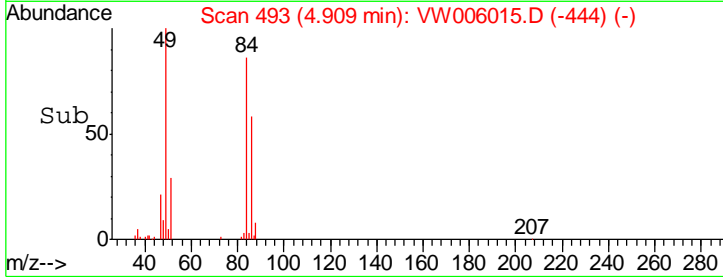
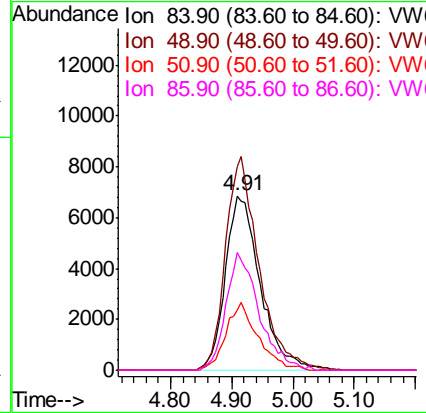
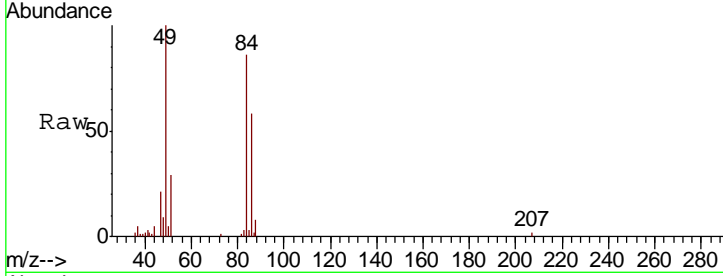




#20  
Methylene Chloride  
Concen: 12.460 ug/l  
RT: 4.91 min Scan# 493  
Delta R.T. -0.00 min  
Lab File: VW006015.D  
Acq: 11 Oct 2018 04:35

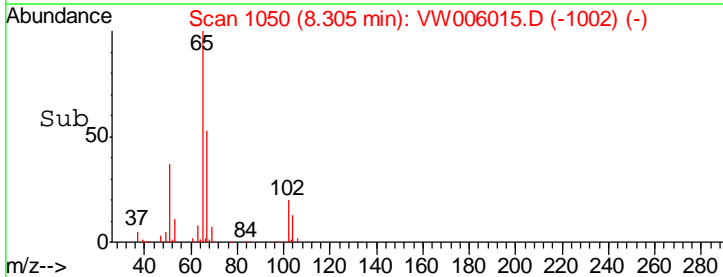
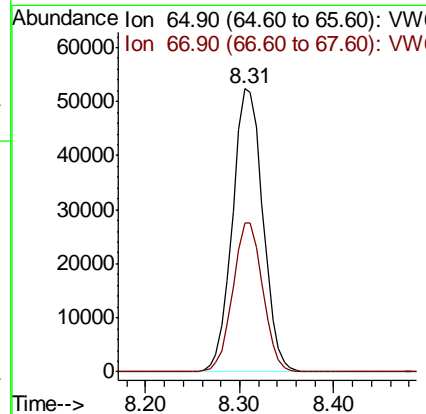
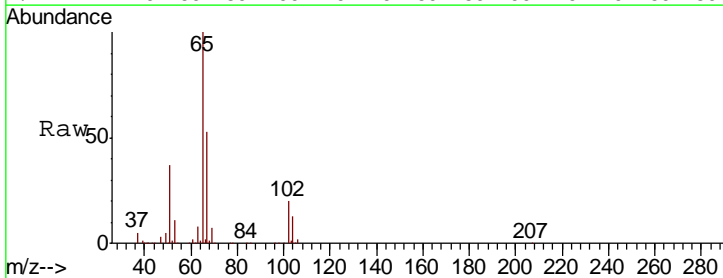
Instrument :  
MSVOA\_W  
ClientSampled :  
TRACK-D-7RE

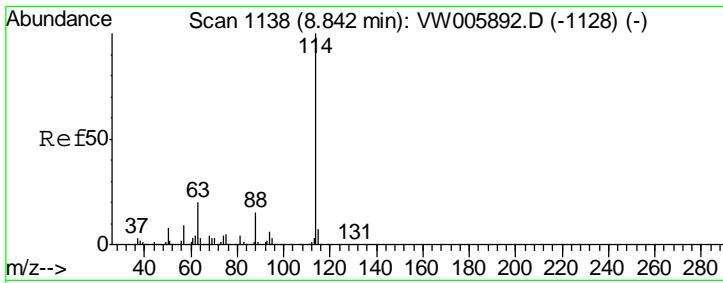
Tgt Ion	Resp	Lower	Upper
84	27132		
49	116.7	99.9	149.9
51	34.3	31.1	46.7
86	67.6	51.8	77.6



#33  
1,2-Dichloroethane-d4  
Concen: 54.010 ug/l  
RT: 8.31 min Scan# 1050  
Delta R.T. -0.01 min  
Lab File: VW006015.D  
Acq: 11 Oct 2018 04:35

Tgt Ion	Resp	Lower	Upper
65	117519		
67	52.0	0.0	104.6

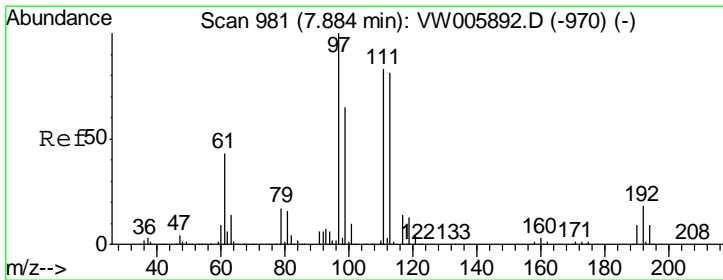
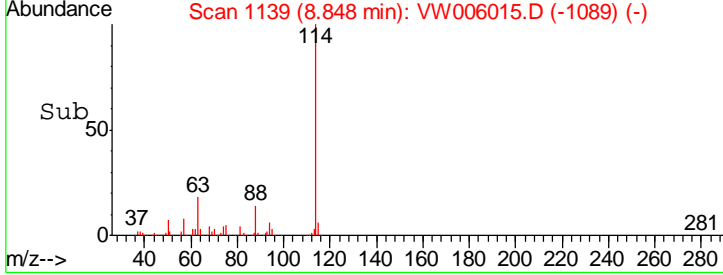
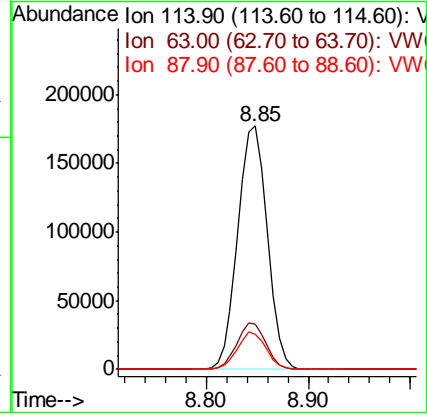
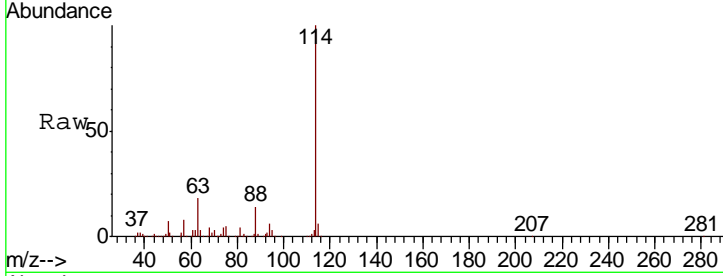




#34  
 1,4-Difluorobenzene  
 Concen: 50.000 ug/l  
 RT: 8.85 min Scan# 1139  
 Delta R.T. 0.01 min  
 Lab File: VW006015.D  
 Acq: 11 Oct 2018 04:35

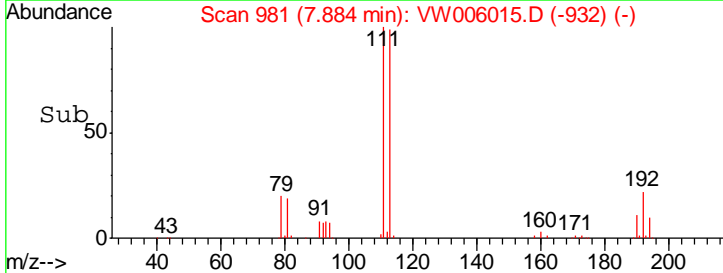
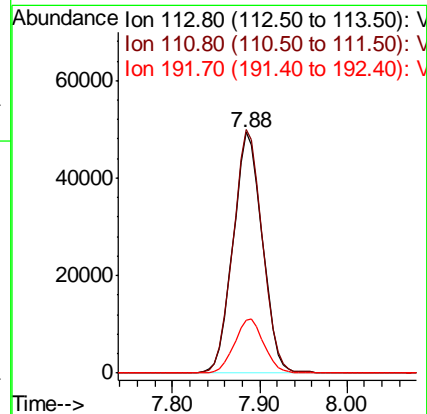
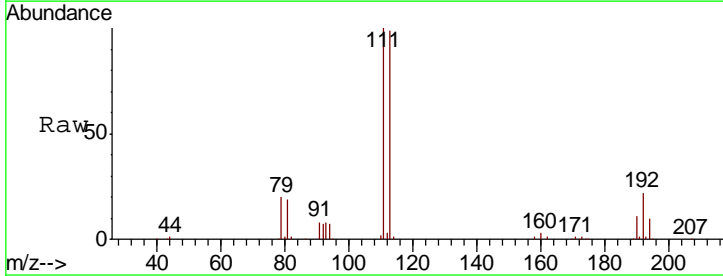
Instrument :  
 MSVOA\_W  
 ClientSampleId :  
 TRACK-D-7RE

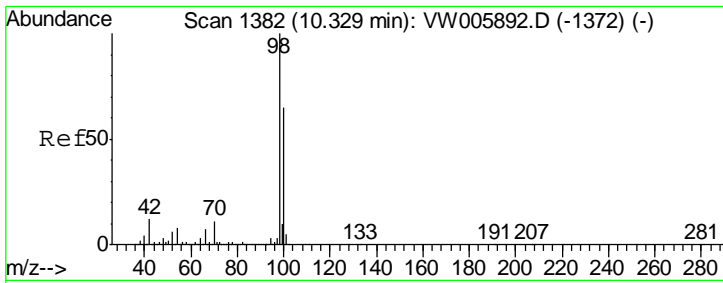
Tgt Ion	Resp	Lower	Upper
114	355401		
63	18.4	0.0	39.2
88	14.2	0.0	30.8



#35  
 Dibromofluoromethane  
 Concen: 50.589 ug/l  
 RT: 7.88 min Scan# 981  
 Delta R.T. -0.00 min  
 Lab File: VW006015.D  
 Acq: 11 Oct 2018 04:35

Tgt Ion	Resp	Lower	Upper
113	114790		
111	101.5	82.0	123.0
192	22.6	18.3	27.5

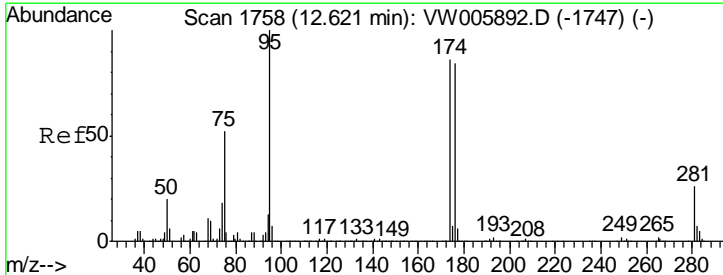
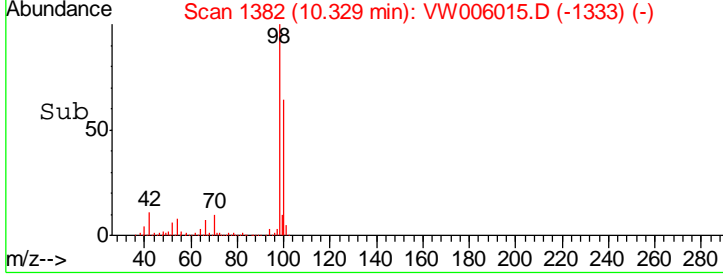
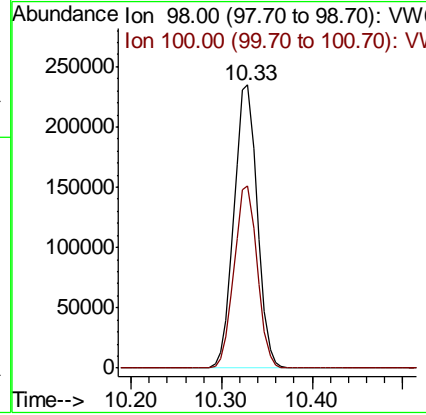
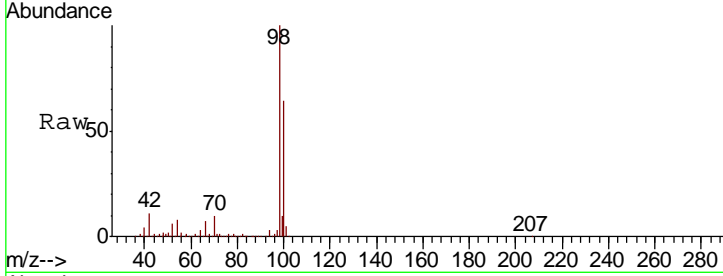




#50  
 Toluene-d8  
 Concen: 47.956 ug/l  
 RT: 10.33 min Scan# 1382  
 Delta R.T. -0.00 min  
 Lab File: VW006015.D  
 Acq: 11 Oct 2018 04:35

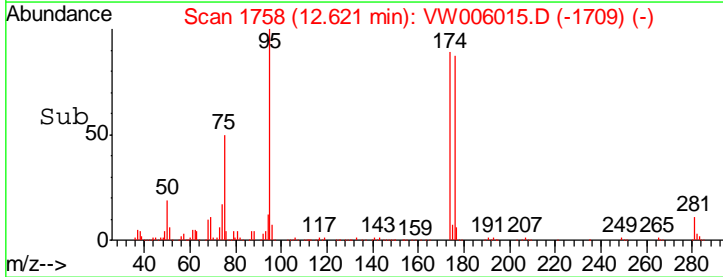
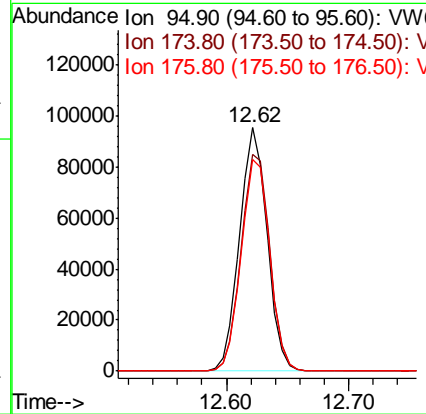
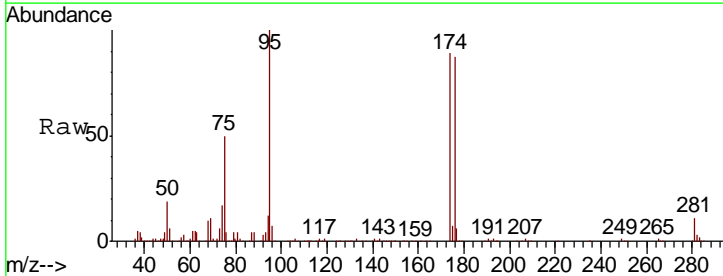
Instrument :  
 MSVOA\_W  
 ClientSampled :  
 TRACK-D-7RE

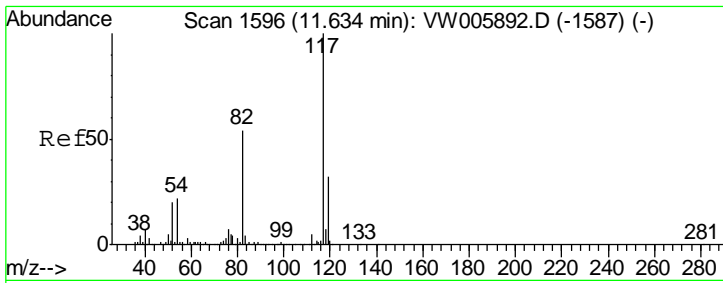
Tgt Ion: 98 Resp: 418660  
 Ion Ratio Lower Upper  
 98 100  
 100 64.0 51.9 77.9



#62  
 4-Bromofluorobenzene  
 Concen: 44.544 ug/l  
 RT: 12.62 min Scan# 1758  
 Delta R.T. -0.00 min  
 Lab File: VW006015.D  
 Acq: 11 Oct 2018 04:35

Tgt Ion: 95 Resp: 147951  
 Ion Ratio Lower Upper  
 95 100  
 174 93.0 0.0 176.4  
 176 90.3 0.0 173.0

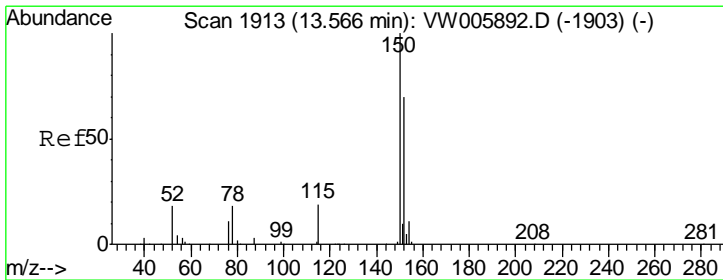
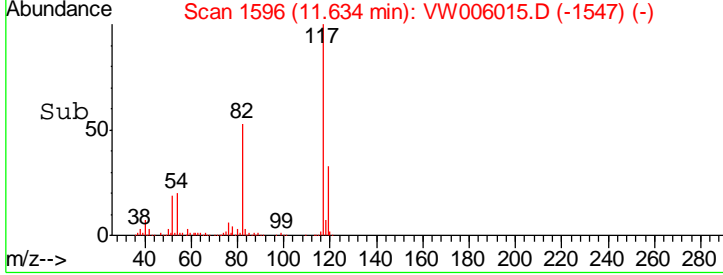
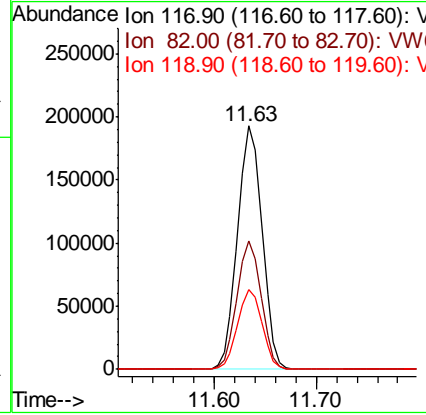
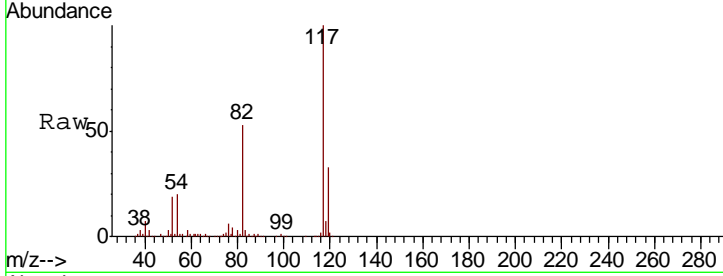




#63  
 Chlorobenzene-d5  
 Concen: 50.000 ug/l  
 RT: 11.63 min Scan# 1596  
 Delta R.T. -0.00 min  
 Lab File: VW006015.D  
 Acq: 11 Oct 2018 04:35

Instrument : MSVOA\_W  
 ClientSampleId : TRACK-D-7RE

Tgt Ion	Resp	Lower	Upper
117	321943		
82	52.5	43.5	65.3
119	32.8	25.4	38.2



#72  
 1,4-Dichlorobenzene-d4  
 Concen: 50.000 ug/l  
 RT: 13.56 min Scan# 1912  
 Delta R.T. -0.01 min  
 Lab File: VW006015.D  
 Acq: 11 Oct 2018 04:35

Tgt Ion	Resp	Lower	Upper
152	160054		
115	54.7	28.3	85.0
150	155.6	0.0	349.2

