

Data Path : Z:\VOASRV\HPCHEM1\MSVOA W\DATA\VW101220\  
 Data File : VW016877.D  
 Acq On : 12 Oct 2020 11:54  
 Operator : SY/VA  
 Sample : L4284-09  
 Misc : 5.04G/10ML/MSVOA W/SOIL  
 ALS Vial : 6 Sample Multiplier: 1

Instrument :  
 MSVOA\_W  
 ClientSampleId :  
 VHBLK02

Quant Time: Oct 13 07:00:38 2020  
 Quant Method : Z:\VOASRV\HPCHEM1\MSVOA\_W\METHOD\SOM2WLM100720S.M  
 Quant Title : VOC Analysis  
 QLast Update : Tue Oct 13 06:53:04 2020  
 Response via : Initial Calibration

Internal Standards	R.T.	QIon	Response	Conc	Units	Dev(Min)
1) 1,4-Difluorobenzene	8.85	114	511406	25.00	ug/L	0.00
28) Chlorobenzene-d5	11.63	117	465525	25.00	ug/L	0.00
60) 1,4-Dichlorobenzene-d4	13.56	152	233178	25.00	ug/L	0.00

## System Monitoring Compounds

4) Vinyl Chloride-d3	2.36	65	117426	23.28	ug/L	0.00
Spiked Amount	25.000	Range	30 - 150	Recovery	=	93.12%
7) Chloroethane-d5	2.90	69	96501	22.80	ug/L	0.00
Spiked Amount	25.000	Range	30 - 150	Recovery	=	91.20%
10) 1,1-Dichloroethene-d2	4.14	63	356	0.03	ug/L	0.12
Spiked Amount	25.000	Range	45 - 110	Recovery	=	0.12%#
20) 2-Butanone-d5	7.08	46	66483	58.18	ug/L	0.00
Spiked Amount	50.000	Range	20 - 135	Recovery	=	116.36%
24) Chloroform-d	7.65	84	251690	23.32	ug/L	0.00
Spiked Amount	25.000	Range	40 - 150	Recovery	=	93.28%
26) 1,2-Dichloroethane-d4	8.31	65	131441	25.22	ug/L	0.00
Spiked Amount	25.000	Range	70 - 130	Recovery	=	100.88%
29) Benzene-d6	8.28	84	507781	24.02	ug/L	0.00
Spiked Amount	25.000	Range	20 - 135	Recovery	=	96.08%
33) 1,2-Dichloropropane-d6	9.27	67	143396	25.24	ug/L	0.00
Spiked Amount	25.000	Range	70 - 120	Recovery	=	100.96%
37) Toluene-d8	10.32	98	483183	24.22	ug/L	0.00
Spiked Amount	25.000	Range	30 - 130	Recovery	=	96.88%
38) trans-1,3-Dichloropropene-	10.58	79	60924	24.31	ug/L	0.00
Spiked Amount	25.000	Range	30 - 135	Recovery	=	97.24%
39) 2-Hexanone-d5	10.93	63	54766	62.33	ug/L	0.00
Spiked Amount	50.000	Range	20 - 135	Recovery	=	124.66%
48) 1,1,2,2-Tetrachloroethane-	12.69	84	128141	27.92	ug/L	0.00
Spiked Amount	25.000	Range	45 - 120	Recovery	=	111.68%
61) 1,2-Dichlorobenzene-d4	13.85	152	184756	24.98	ug/L	0.00
Spiked Amount	25.000	Range	75 - 120	Recovery	=	99.92%

## Target Compounds

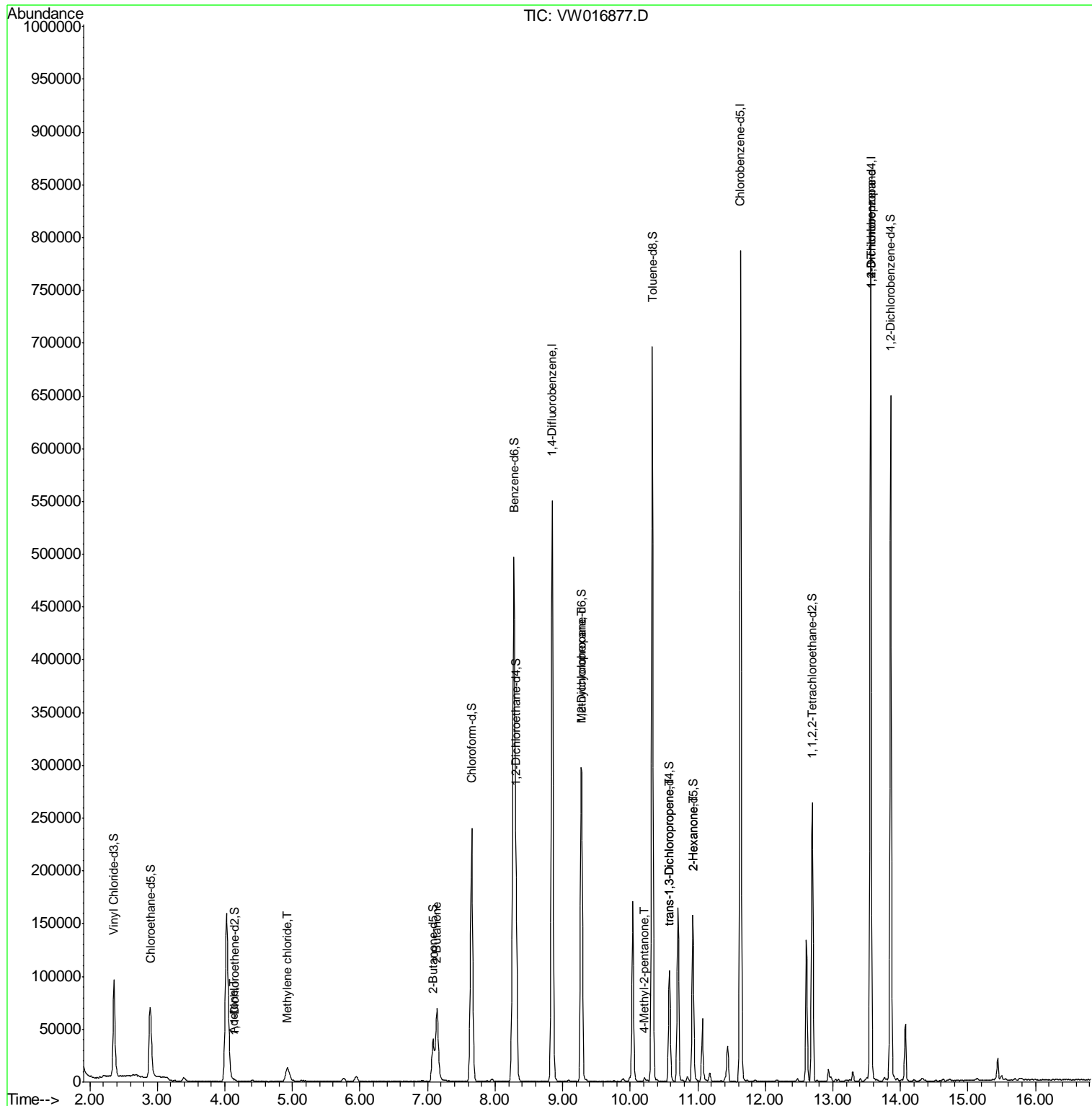
Target Compounds	R.T.	QIon	Response	Conc	Units	Ovalue
13) Acetone	4.13	43	1126	1.302	ug/L	88
16) Methylene chloride	4.93	84	12921	1.831	ug/L	85
21) 2-Butanone	7.14	43	3529	2.431	ug/L #	59
36) Methylcyclohexane	9.27	83	37075	3.118	ug/L #	22
43) 4-Methyl-2-pentanone	10.21	43	2313	0.813	ug/L	97
45) trans-1,3-Dichloropropene	10.58	75	2867	0.378	ug/L	89
49) 2-Hexanone	10.93	43	6242	3.323	ug/L #	63
59) 1,2,3-Trichloropropane	13.56	75	23581	6.410	ug/L	92

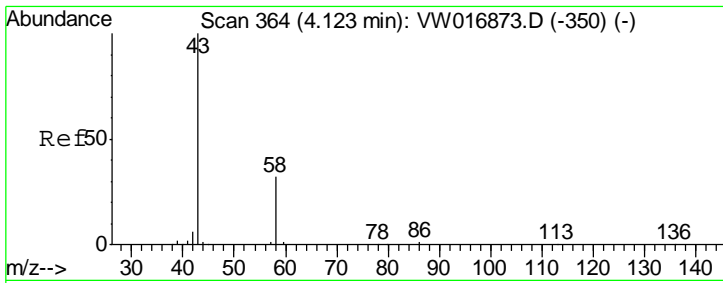
(#) = qualifier out of range (m) = manual integration (+) = signals summed

Data Path : Z:\VOASRV\HPCHEM1\MSVOA W\DATA\VW101220\  
 Data File : VW016877.D  
 Acq On : 12 Oct 2020 11:54  
 Operator : SY/VA  
 Sample : L4284-09  
 Misc : 5.04G/10ML/MSVOA W/SOIL  
 ALS Vial : 6 Sample Multiplier: 1

Instrument :  
 MSVOA\_W  
 Client Sampled :  
 VHBLK02

Quant Time: Oct 13 07:00:38 2020  
 Quant Method : Z:\VOASRV\HPCHEM1\MSVOA\_W\METHOD\SOM2WLM100720S.M  
 Quant Title : VOC Analysis  
 QLast Update : Tue Oct 13 06:53:04 2020  
 Response via : Initial Calibration

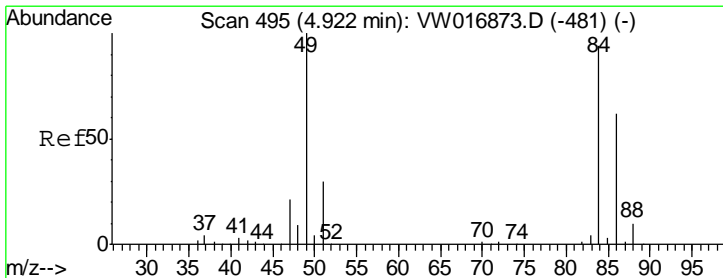
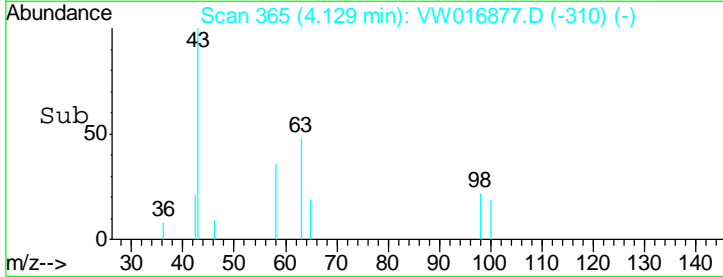
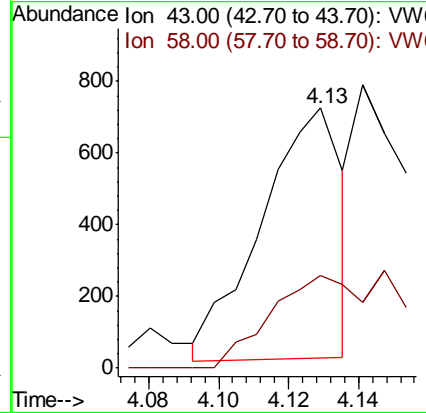
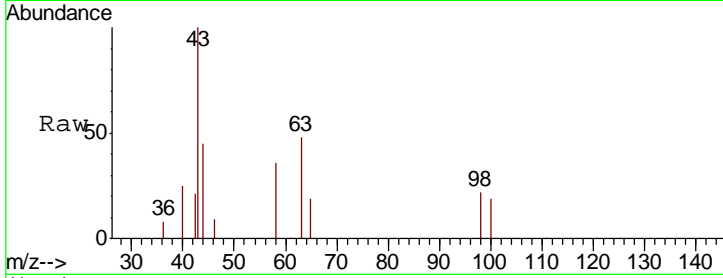




#13  
 Acetone  
 Concen: 1.302 ug/L  
 RT: 4.13 min Scan# 365  
 Delta R.T. 0.01 min  
 Lab File: VW016877.D  
 Acq: 12 Oct 2020 11:54

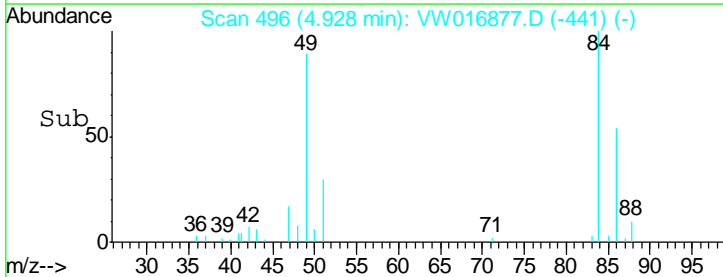
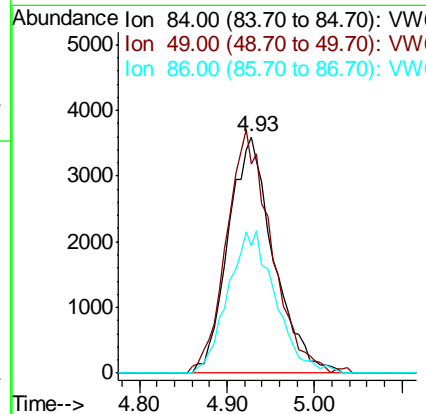
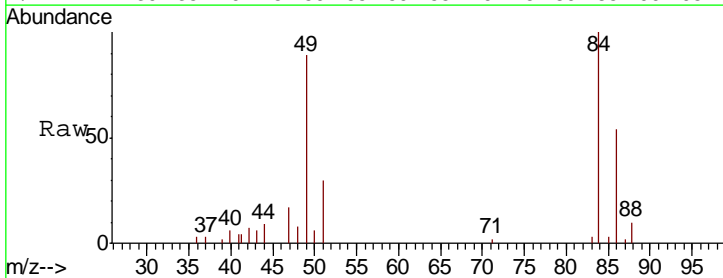
**Instrument :**  
 MSVOA\_W  
**ClientSampled :**  
 VHBLK02

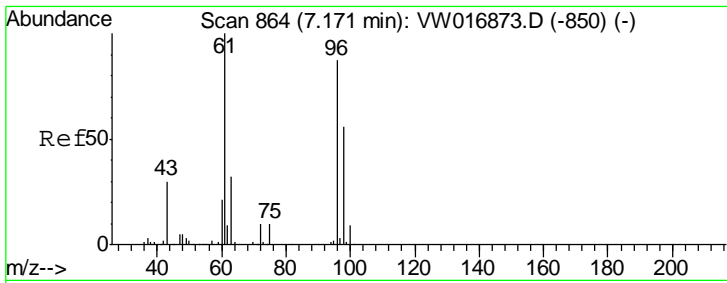
Tgt Ion	Ratio	Lower	Upper
43	100		
58	40.6	0.0	67.6



#16  
 Methylene chloride  
 Concen: 1.831 ug/L  
 RT: 4.93 min Scan# 496  
 Delta R.T. 0.01 min  
 Lab File: VW016877.D  
 Acq: 12 Oct 2020 11:54

Tgt Ion	Ratio	Lower	Upper
84	100		
49	88.6	73.1	135.8
86	53.7	46.0	85.4

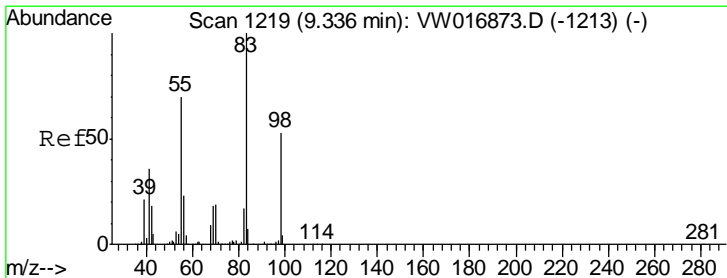
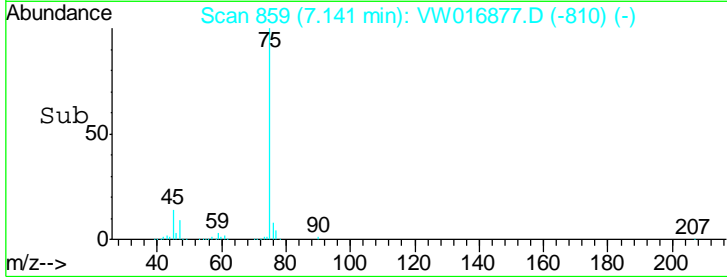
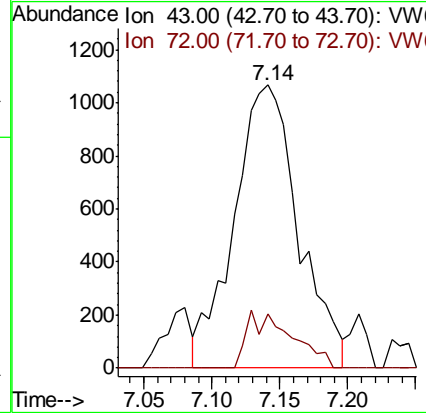
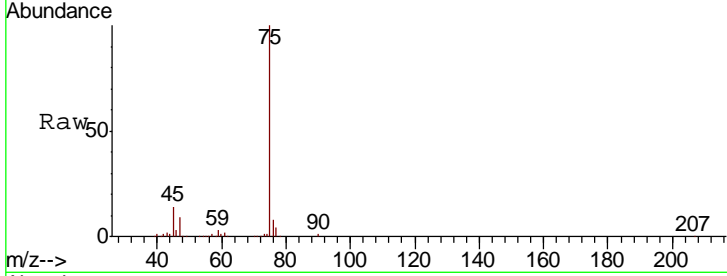




#21  
 2-Butanone  
 Concen: 2.431 ug/L  
 RT: 7.14 min Scan# 859  
 Delta R.T. -0.03 min  
 Lab File: VW016877.D  
 Acq: 12 Oct 2020 11:54

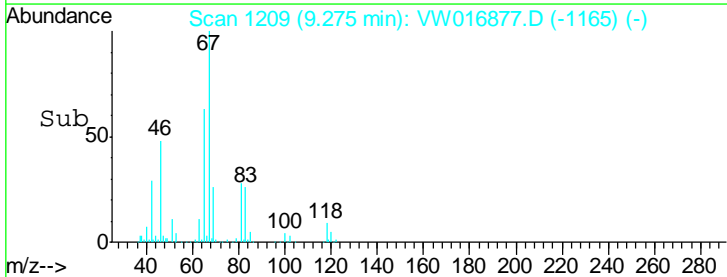
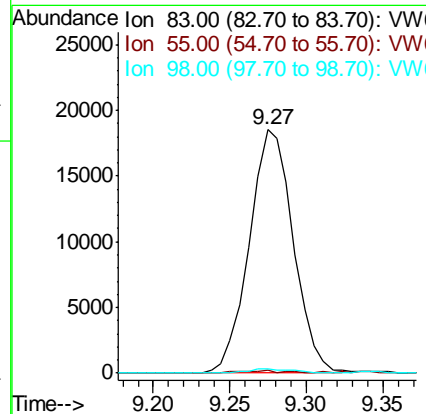
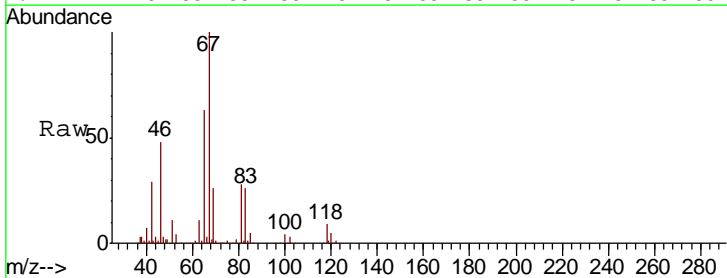
Instrument :  
 MSVOA\_W  
 ClientSampled :  
 VHBLK02

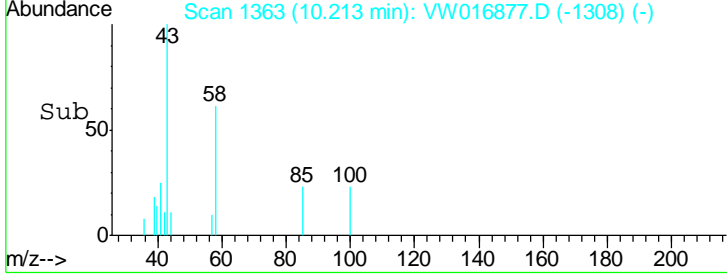
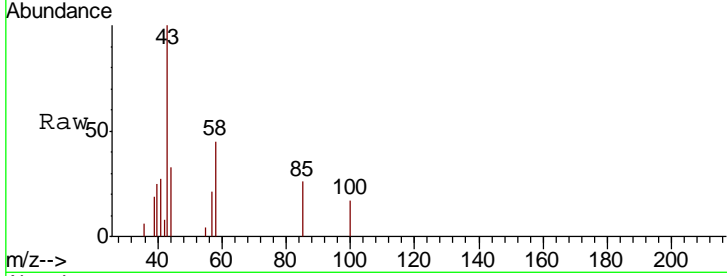
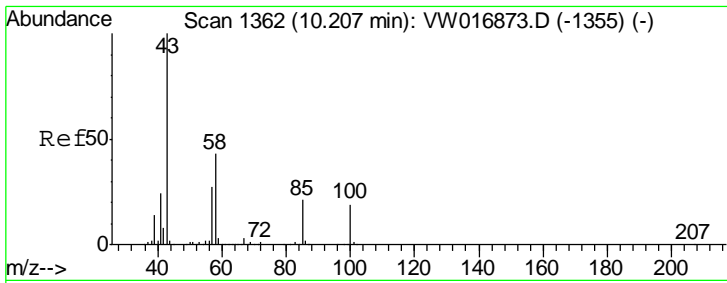
Tgt Ion	Ratio	Lower	Upper
43	100		
72	9.6	16.2	48.5#



#36  
 Methylcyclohexane  
 Concen: 3.118 ug/L  
 RT: 9.27 min Scan# 1209  
 Delta R.T. -0.06 min  
 Lab File: VW016877.D  
 Acq: 12 Oct 2020 11:54

Tgt Ion	Ratio	Lower	Upper
83	100		
55	0.4	54.2	81.4#
98	1.8	41.4	62.2#

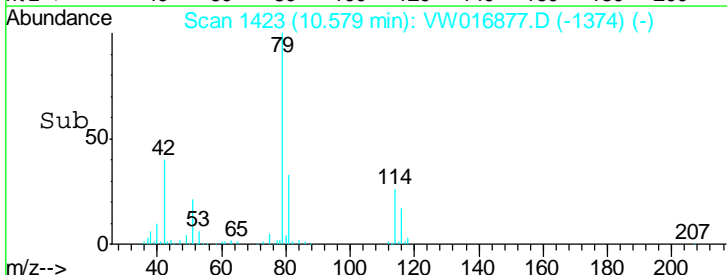
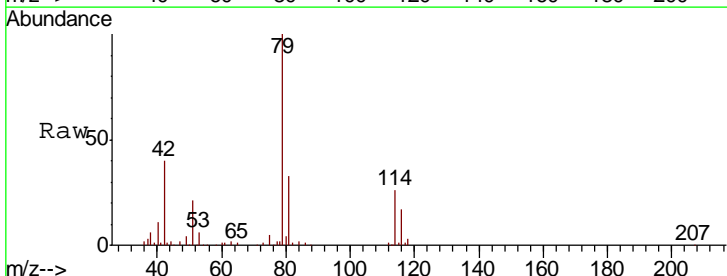
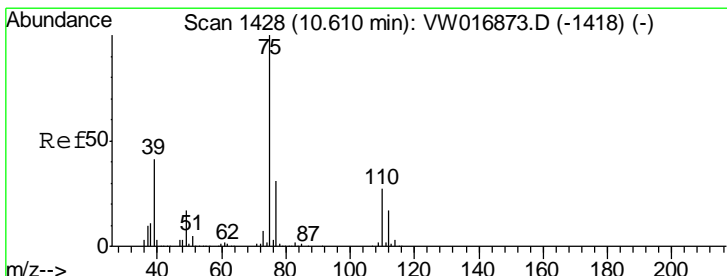
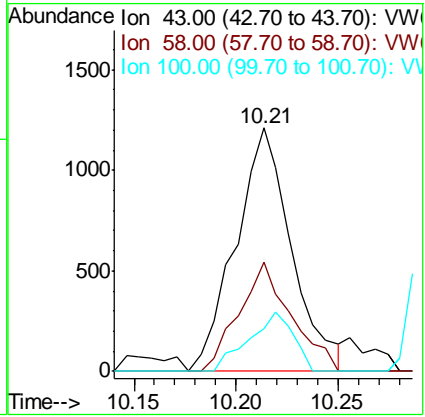




#43  
 4-Methyl-2-pentanone  
 Concen: 0.813 ug/L  
 RT: 10.21 min Scan# 1363  
 Delta R.T. 0.01 min  
 Lab File: VW016877.D  
 Acq: 12 Oct 2020 11:54

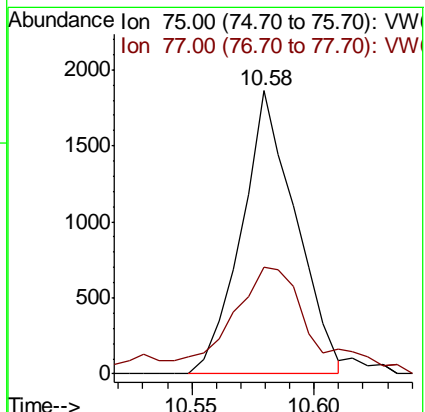
Instrument : MSVOA\_W  
 ClientSampled : VHBLK02

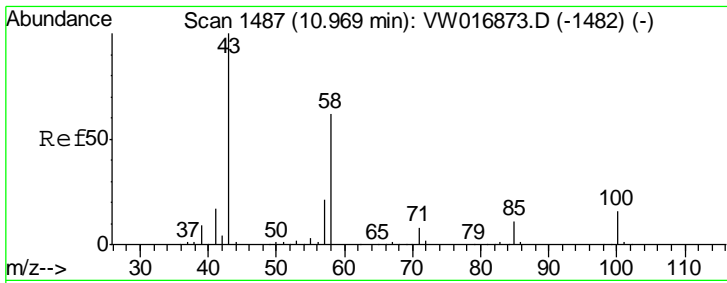
Tgt Ion	Resp	Lower	Upper
43	100		
58	41.7	34.7	52.1
100	19.3	16.9	25.3



#45  
 trans-1,3-Dichloropropene  
 Concen: 0.378 ug/L  
 RT: 10.58 min Scan# 1423  
 Delta R.T. -0.03 min  
 Lab File: VW016877.D  
 Acq: 12 Oct 2020 11:54

Tgt Ion	Resp	Lower	Upper
75	100		
77	37.8	22.2	41.2

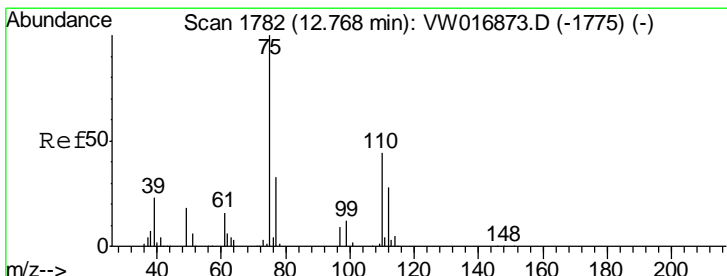
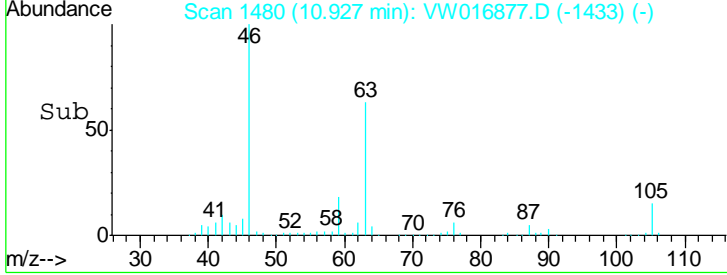
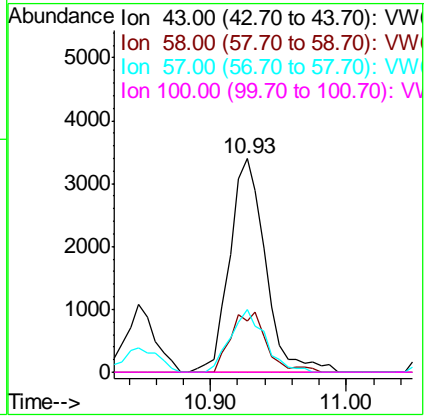
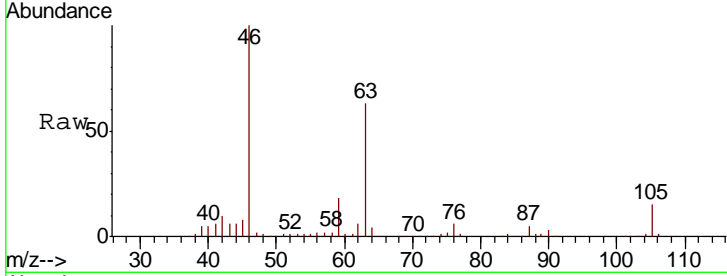




#49  
 2-Hexanone  
 Concen: 3.323 ug/L  
 RT: 10.93 min Scan# 1480  
 Delta R.T. -0.04 min  
 Lab File: VW016877.D  
 Acq: 12 Oct 2020 11:54

Instrument : MSVOA\_W  
 ClientSampled : VHBLK02

Tgt Ion	Resp	Lower	Upper
43	100		
58	26.9	47.1	70.7#
57	28.1	16.2	24.4#
100	0.0	13.3	19.9#



#59  
 1,2,3-Trichloropropane  
 Concen: 6.410 ug/L  
 RT: 13.56 min Scan# 1912  
 Delta R.T. 0.79 min  
 Lab File: VW016877.D  
 Acq: 12 Oct 2020 11:54

Tgt Ion	Resp	Lower	Upper
75	100		
77	37.3	26.2	39.2

