

Data Path : Z:\voasrv\HPCHEM1\MSVOA_W\Data\VW101222\
 Data File : VW024872.D
 Acq On : 12 Oct 2022 14:45
 Operator : SY/VA
 Sample : N5049-12
 Misc : 5.96g/10mL/MSVOA_W/SOIL
 ALS Vial : 1 Sample Multiplier: 1

Instrument :
 MSVOA_W
ClientSampleId :
 C0BP8

Manual Integrations
APPROVED
 Reviewed By :Semsettin Yesilyurt 10/13/2022
 Supervised By :Mahesh Dadoda 10/13/2022

Quant Time: Oct 12 23:20:52 2022
 Quant Method : Z:\voasrv\HPCHEM1\MSVOA_W\Method\SFAMWLM101222SMA.M
 Quant Title : SFAM01.0
 QLast Update : Wed Oct 12 23:18:51 2022
 Response via : Initial Calibration

| Compound | R.T. | QIon | Response | Conc | Units | Dev(Min) |
|------------------------------------|--------|----------------|------------|----------|-------|----------|
| Internal Standards | | | | | | |
| 1) 1,4-Difluorobenzene | 8.848 | 114 | 530265 | 25.000 | ug/L | 0.00 |
| 28) Chlorobenzene-d5 | 11.634 | 117 | 440066 | 25.000 | ug/L | 0.00 |
| 58) 1,4-Dichlorobenzene-d4 | 13.554 | 152 | 158833 | 25.000 | ug/L | 0.00 |
| System Monitoring Compounds | | | | | | |
| 4) Vinyl Chloride-d3 | 2.355 | 65 | 106672 | 17.051 | ug/L | 0.00 |
| Spiked Amount | 25.000 | Range 30 - 150 | Recovery = | 68.200% | | |
| 7) Chloroethane-d5 | 2.891 | 69 | 73817 | 20.153 | ug/L | 0.00 |
| Spiked Amount | 25.000 | Range 30 - 150 | Recovery = | 80.600% | | |
| 11) 1,1-Dichloroethene-d2 | 4.019 | 63 | 173394 | 12.748 | ug/L | -0.01 |
| Spiked Amount | 25.000 | Range 45 - 110 | Recovery = | 51.000% | | |
| 21) 2-Butanone-d5 | 7.086 | 46 | 44897 | 22.650 | ug/L | 0.00 |
| Spiked Amount | 50.000 | Range 20 - 135 | Recovery = | 45.300% | | |
| 24) Chloroform-d | 7.647 | 84 | 329899 | 22.057 | ug/L | 0.00 |
| Spiked Amount | 25.000 | Range 40 - 150 | Recovery = | 88.240% | | |
| 26) 1,2-Dichloroethane-d4 | 8.305 | 65 | 184445m | 23.563 | ug/L | 0.00 |
| Spiked Amount | 25.000 | Range 70 - 130 | Recovery = | 94.240% | | |
| 32) Benzene-d6 | 8.275 | 84 | 615096 | 22.290 | ug/L | 0.00 |
| Spiked Amount | 25.000 | Range 20 - 135 | Recovery = | 89.160% | | |
| 36) 1,2-Dichloropropane-d6 | 9.274 | 67 | 213587 | 25.235 | ug/L | 0.00 |
| Spiked Amount | 25.000 | Range 70 - 120 | Recovery = | 100.960% | | |
| 41) Toluene-d8 | 10.323 | 98 | 488278 | 19.714 | ug/L | 0.00 |
| Spiked Amount | 25.000 | Range 30 - 130 | Recovery = | 78.840% | | |
| 43) trans-1,3-Dichloroprop... | 10.579 | 79 | 36829 | 11.473 | ug/L | 0.00 |
| Spiked Amount | 25.000 | Range 30 - 135 | Recovery = | 45.880% | | |
| 47) 2-Hexanone-d5 | 10.926 | 63 | 26010 | 18.329 | ug/L | 0.00 |
| Spiked Amount | 50.000 | Range 20 - 135 | Recovery = | 36.660% | | |
| 56) 1,1,2,2-Tetrachloroeth... | 12.688 | 84 | 162642 | 24.640 | ug/L | 0.00 |
| Spiked Amount | 25.000 | Range 45 - 120 | Recovery = | 98.560% | | |
| 66) 1,2-Dichlorobenzene-d4 | 13.847 | 152 | 120310 | 20.727 | ug/L | 0.00 |
| Spiked Amount | 25.000 | Range 75 - 120 | Recovery = | 82.920% | | |
| Target Compounds | | | | | | |
| 13) Acetone | 4.141 | 43 | 10003 | 7.212 | ug/L | 94 |

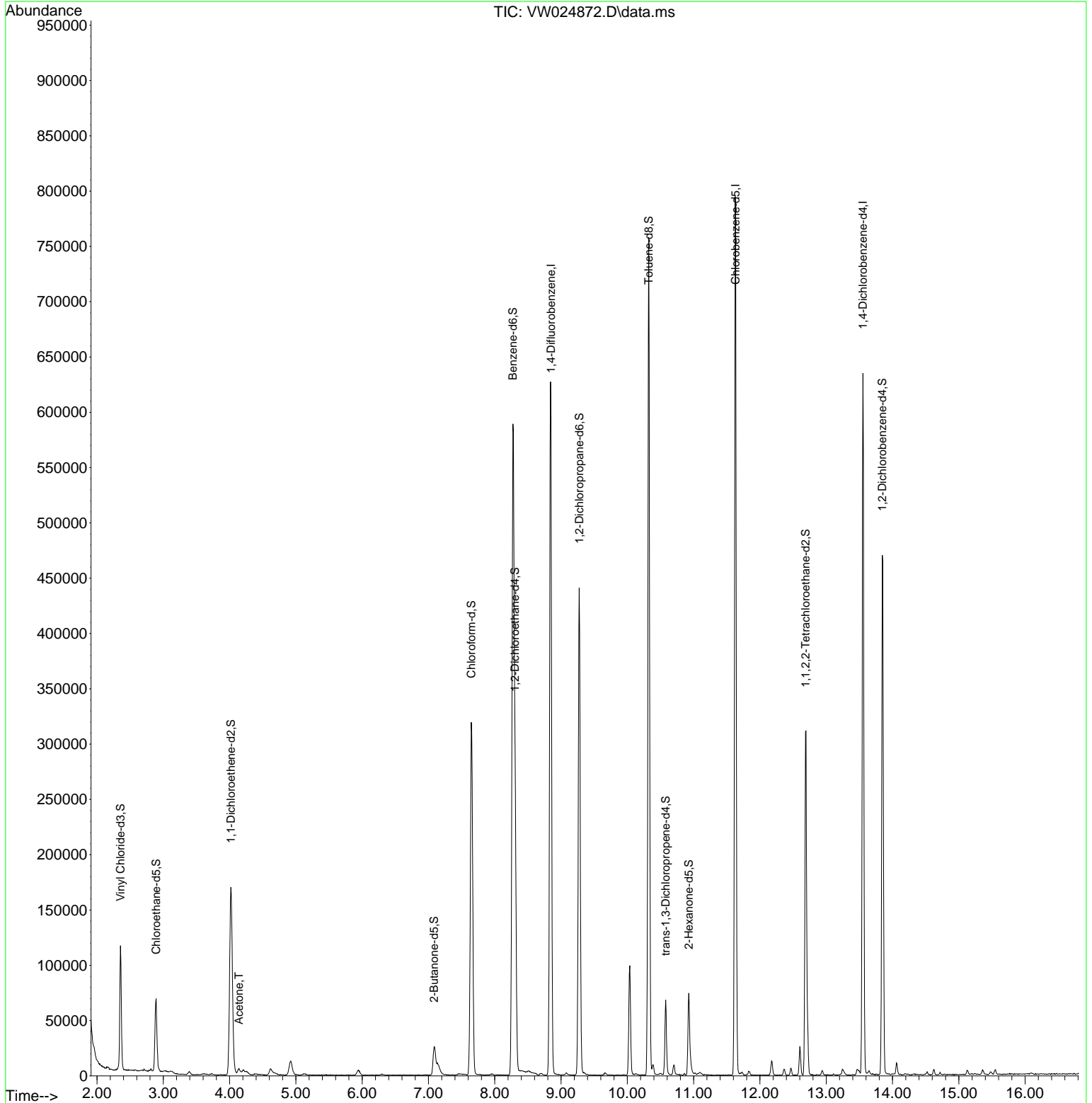
(#) = qualifier out of range (m) = manual integration (+) = signals summed

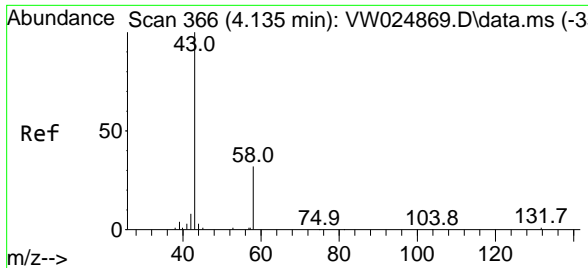
Data Path : Z:\voasrv\HPCHEM1\MSVOA_W\Data\VW101222\
 Data File : VW024872.D
 Acq On : 12 Oct 2022 14:45
 Operator : SY/VA
 Sample : N5049-12
 Misc : 5.96g/10mL/MSVOA_W/SOIL
 ALS Vial : 1 Sample Multiplier: 1

Instrument :
 MSVOA_W
ClientSampleId :
 C0BP8

Quant Time: Oct 12 23:20:52 2022
 Quant Method : Z:\voasrv\HPCHEM1\MSVOA_W\Method\SFAMWLM101222SMA.M
 Quant Title : SFAM01.0
 QLast Update : Wed Oct 12 23:18:51 2022
 Response via : Initial Calibration

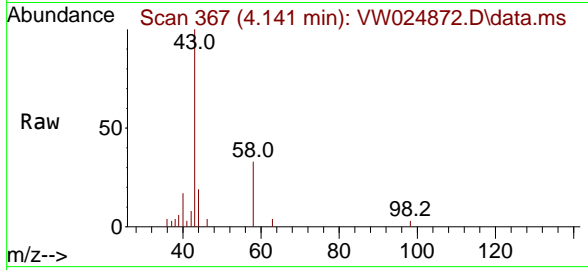
Manual Integrations
APPROVED
 Reviewed By :Semsettin Yesilyurt 10/13/2022
 Supervised By :Mahesh Dadoda 10/13/2022





#13
 Acetone
 Concen: 7.212 ug/L
 RT: 4.141 min Scan# 30
 Delta R.T. 0.006 min
 Lab File: VW024872.D
 Acq: 12 Oct 2022 14:45

Instrument : MSVOA_W
 Client Sample Id : C0BP8



Tgt Ion: 43 Resp: 1000
 Ion Ratio Lower Upper
 43 100
 58 28.5 0.0 64.2

Manual Integrations
APPROVED
 Reviewed By : Semsettin Yesilyurt 10/13/2022
 Supervised By : Mahesh Dadoda 10/13/2022

