

Data Path : Z:\VOASRV\HPCHEM1\MSVOA_W\DATA\VW101618\
 Data File : VW006103.D
 Acq On : 17 Oct 2018 03:56
 Operator : VA/AP
 Sample : J5513-03
 Misc : 5.77G/5ML/MSVOA_W/SOIL
 ALS Vial : 39 Sample Multiplier: 1

Instrument :
 MSVOA_W
 ClientSampleId :
 EP1-CUSA-BASE-1

Quant Time: Oct 17 07:21:21 2018
 Quant Method : Z:\VOASRV\HPCHEM1\MSVOA_W\METHOD\82W101518S.M
 Quant Title : SW846 8260
 QLast Update : Tue Oct 16 05:36:33 2018
 Response via : Initial Calibration

| Internal Standards | R.T. | QIon | Response | Conc | Units | Dev(Min) |
|----------------------------|-------|------|----------|-------|-------|----------|
| 1) Pentafluorobenzene | 7.95 | 168 | 266647 | 50.00 | ug/l | 0.00 |
| 34) 1,4-Difluorobenzene | 8.85 | 114 | 409128 | 50.00 | ug/l | 0.00 |
| 63) Chlorobenzene-d5 | 11.63 | 117 | 354089 | 50.00 | ug/l | 0.00 |
| 72) 1,4-Dichlorobenzene-d4 | 13.57 | 152 | 175009 | 50.00 | ug/l | 0.00 |

System Monitoring Compounds

| | | | | | | |
|---------------------------|-------|-----|----------|--------|---------|------|
| 33) 1,2-Dichloroethane-d4 | 8.31 | 65 | 120918 | 54.70 | ug/l | 0.00 |
| Spiked Amount | | | | 50.000 | | |
| | | | Recovery | = | 109.40% | |
| 35) Dibromofluoromethane | 7.88 | 113 | 118020 | 48.82 | ug/l | 0.00 |
| Spiked Amount | | | | 50.000 | | |
| | | | Recovery | = | 97.64% | |
| 50) Toluene-d8 | 10.33 | 98 | 392489 | 42.67 | ug/l | 0.00 |
| Spiked Amount | | | | 50.000 | | |
| | | | Recovery | = | 85.34% | |
| 62) 4-Bromofluorobenzene | 12.62 | 95 | 147292 | 42.64 | ug/l | 0.00 |
| Spiked Amount | | | | 50.000 | | |
| | | | Recovery | = | 85.28% | |

Target Compounds

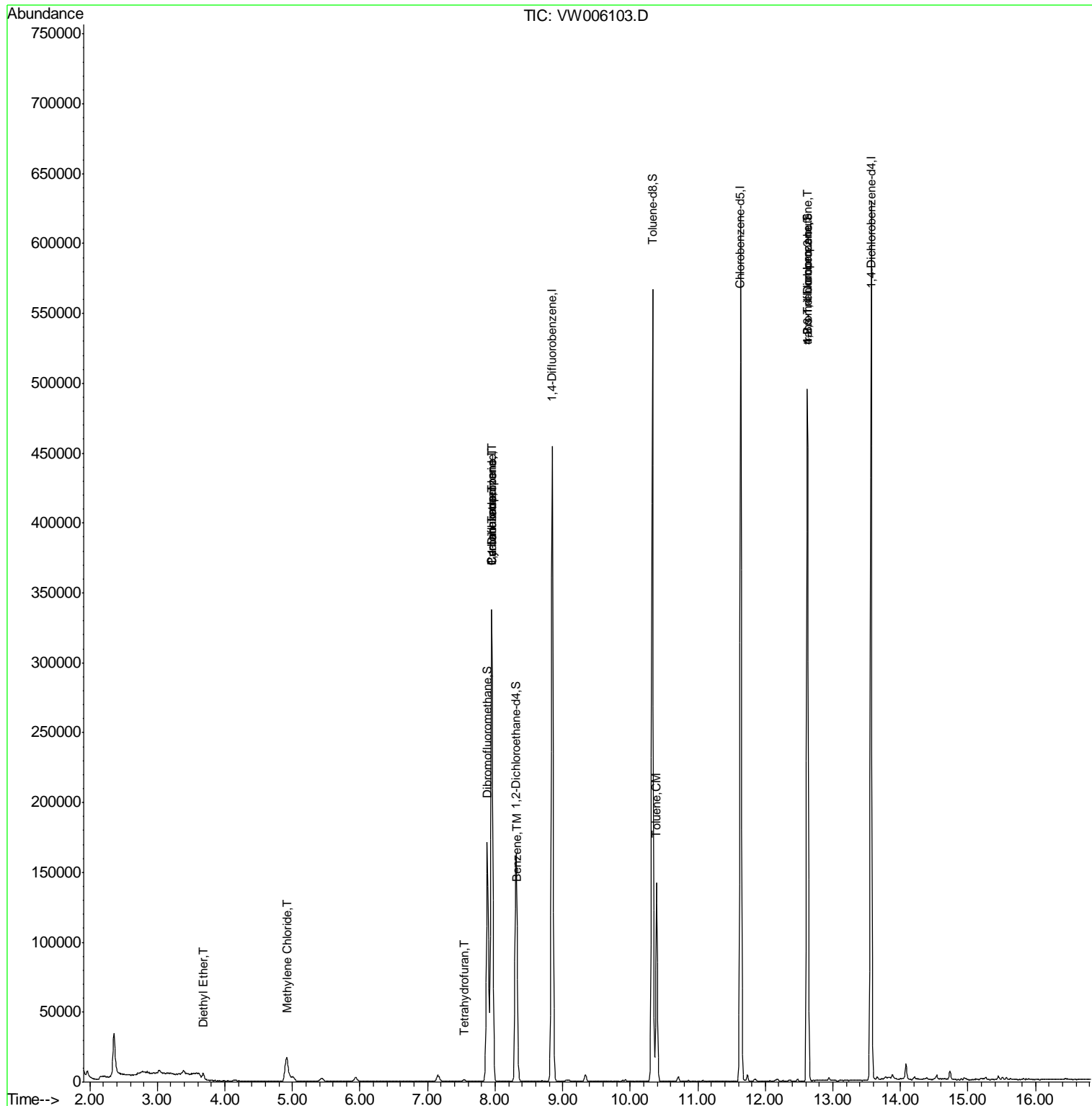
| | | | | | Qvalue |
|--------------------------------|-------|-----|-------|--------------|--------|
| 8) Diethyl Ether | 3.68 | 74 | 2557 | 2.129 ug/l | 86 |
| 16) Acetone | 4.14 | 43 | 1918 | Below Cal | # 80 |
| 20) Methylene Chloride | 4.92 | 84 | 15761 | 5.282 ug/l | 95 |
| 29) Tetrahydrofuran | 7.54 | 42 | 953 | 2.596 ug/l | 94 |
| 31) Cyclohexane | 7.95 | 56 | 5984 | 1.479 ug/l | # 24 |
| 36) 1,1-Dichloropropene | 7.95 | 75 | 17331 | 4.596 ug/l | # 48 |
| 38) Carbon Tetrachloride | 7.95 | 117 | 23845 | 5.768 ug/l | # 16 |
| 40) Benzene | 8.33 | 78 | 21130 | 2.043 ug/l | 99 |
| 52) Toluene | 10.39 | 92 | 60274 | 8.691 ug/l | 98 |
| 76) 1,2,3-Trichloropropane | 12.62 | 75 | 75639 | 56.585 ug/l | # 100 |
| 81) trans-1,4-Dichloro-2-buten | 12.62 | 75 | 75639 | 135.261 ug/l | # 10 |

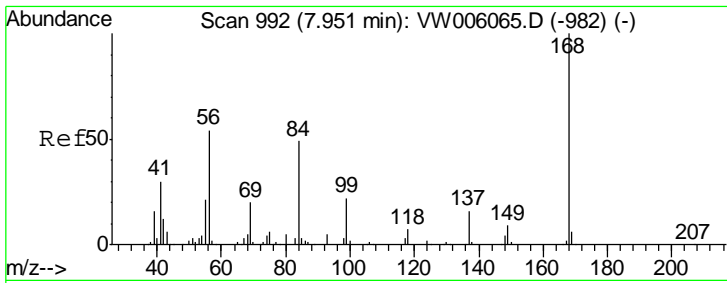
(#) = qualifier out of range (m) = manual integration (+) = signals summed

Data Path : Z:\VOASRV\HPCHEM1\MSVOA_W\DATA\VW101618\
 Data File : VW006103.D
 Acq On : 17 Oct 2018 03:56
 Operator : VA/AP
 Sample : J5513-03
 Misc : 5.77G/5ML/MSVOA_W/SOIL
 ALS Vial : 39 Sample Multiplier: 1

Instrument :
 MSVOA_W
 ClientSampleId :
 EP1-CUSA-BASE-1

Quant Time: Oct 17 07:21:21 2018
 Quant Method : Z:\VOASRV\HPCHEM1\MSVOA_W\METHOD\82W101518S.M
 Quant Title : SW846 8260
 QLast Update : Tue Oct 16 05:36:33 2018
 Response via : Initial Calibration

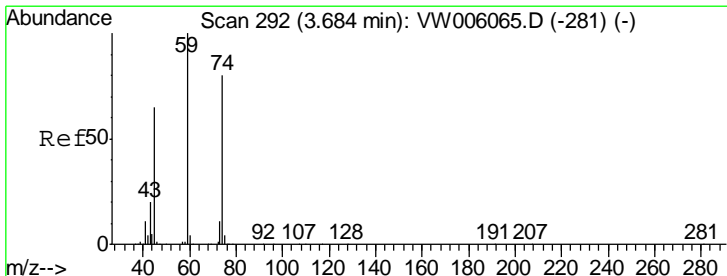
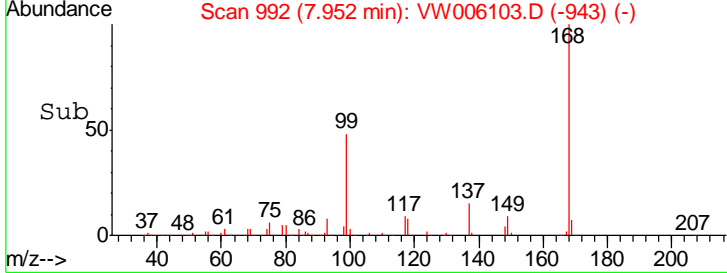
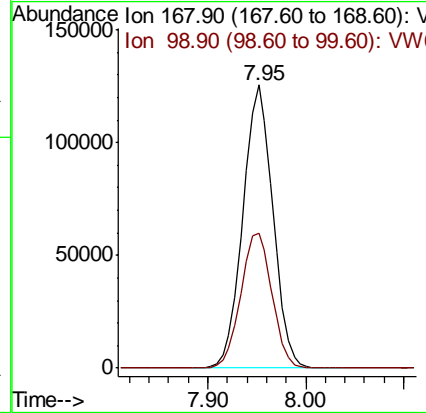
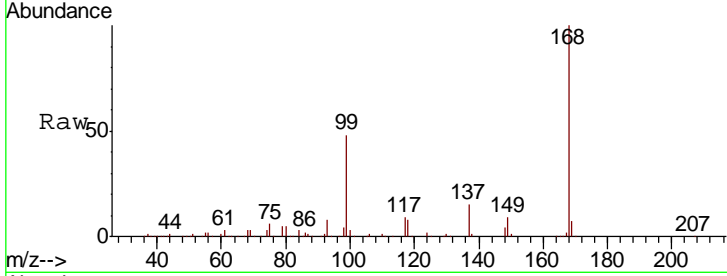




#1
 Pentafluorobenzene
 Concen: 50.000 ug/l
 RT: 7.95 min Scan# 992
 Delta R.T. 0.00 min
 Lab File: VW006103.D
 Acq: 17 Oct 2018 03:56

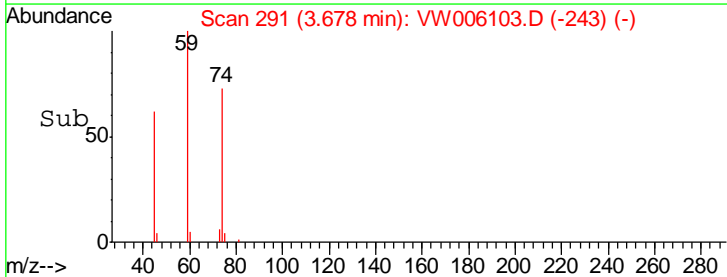
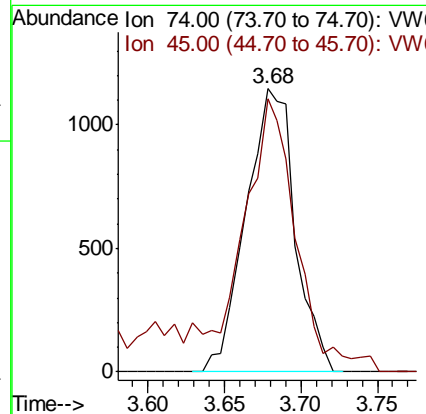
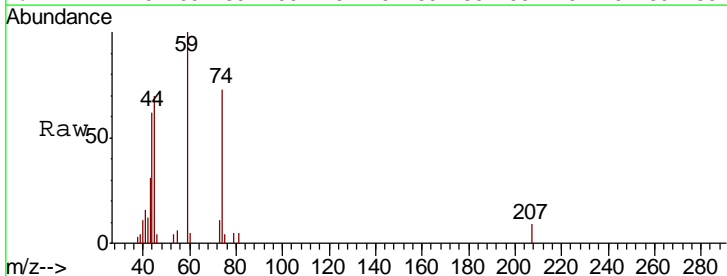
Instrument : MSVOA_W
 ClientSampled : EP1-CUSA-BASE-1

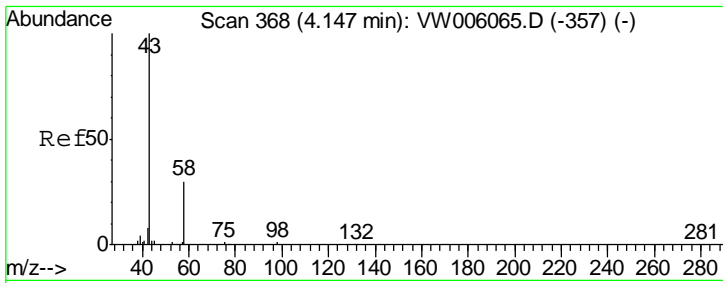
Tgt Ion: 168 Resp: 266647
 Ion Ratio Lower Upper
 168 100
 99 47.9 39.9 59.9



#8
 Diethyl Ether
 Concen: 2.129 ug/l
 RT: 3.68 min Scan# 291
 Delta R.T. -0.01 min
 Lab File: VW006103.D
 Acq: 17 Oct 2018 03:56

Tgt Ion: 74 Resp: 2557
 Ion Ratio Lower Upper
 74 100
 45 98.3 42.8 128.3

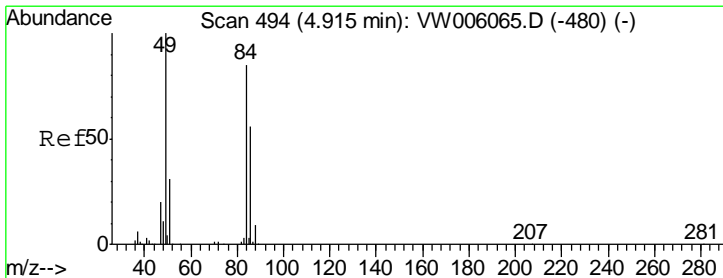
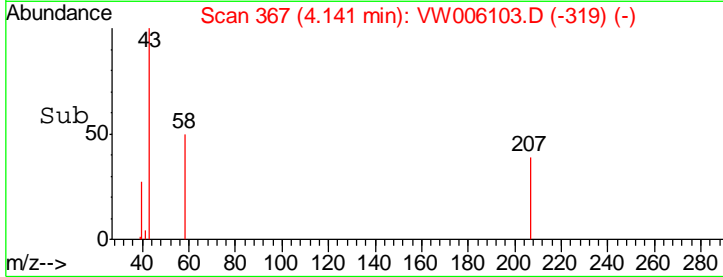
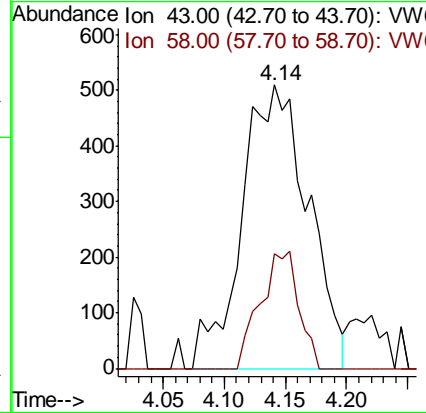
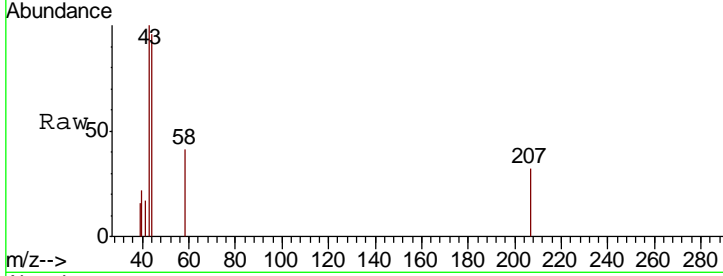




#16
 Acetone
 Concen: Below Cal
 RT: 4.14 min Scan# 367
 Delta R.T. -0.01 min
 Lab File: VW006103.D
 Acq: 17 Oct 2018 03:56

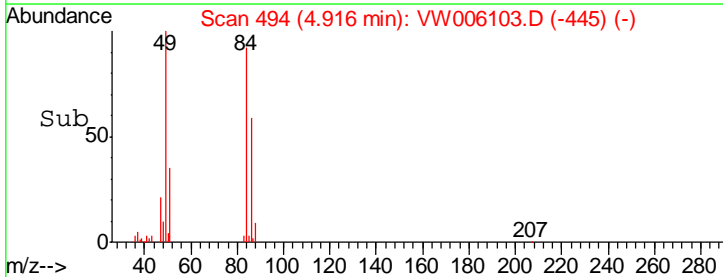
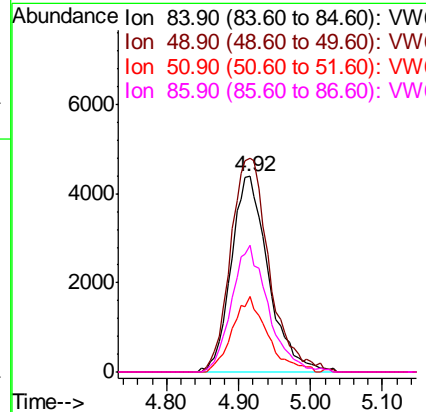
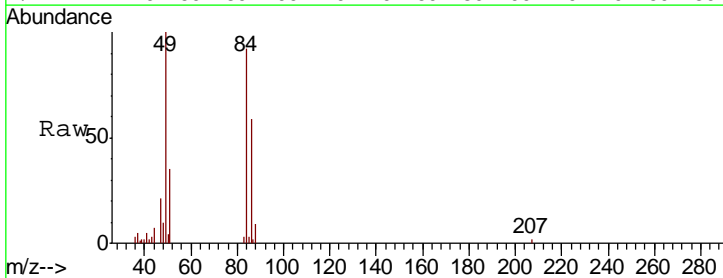
Instrument : MSVOA_W
 ClientSampleId : EP1-CUSA-BASE-1

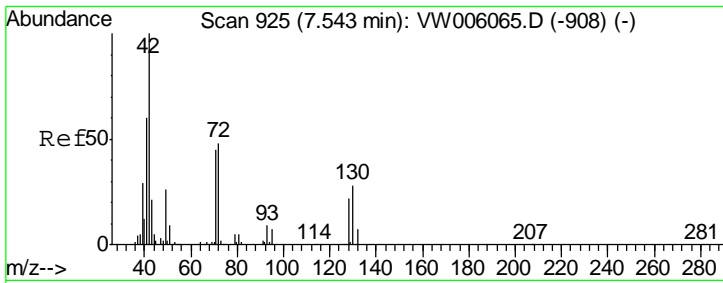
| Tgt Ion | Resp | Lower | Upper |
|---------|------|-------|-------|
| 43 | 1918 | | |
| 58 | 40.7 | 24.0 | 36.0# |



#20
 Methylene Chloride
 Concen: 5.282 ug/l
 RT: 4.92 min Scan# 494
 Delta R.T. 0.00 min
 Lab File: VW006103.D
 Acq: 17 Oct 2018 03:56

| Tgt Ion | Resp | Lower | Upper |
|---------|-------|-------|-------|
| 84 | 15761 | | |
| 49 | 109.1 | 93.6 | 140.4 |
| 51 | 38.4 | 29.0 | 43.4 |
| 86 | 64.7 | 52.6 | 79.0 |

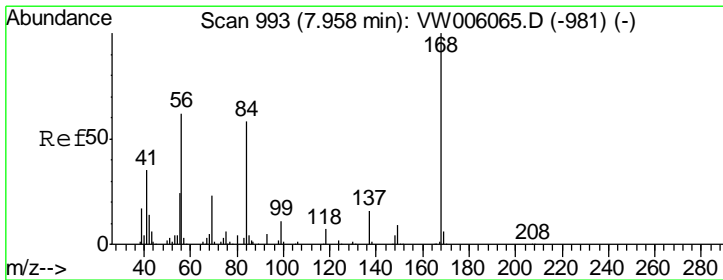
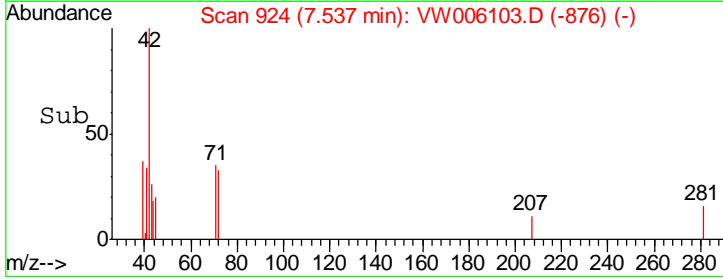
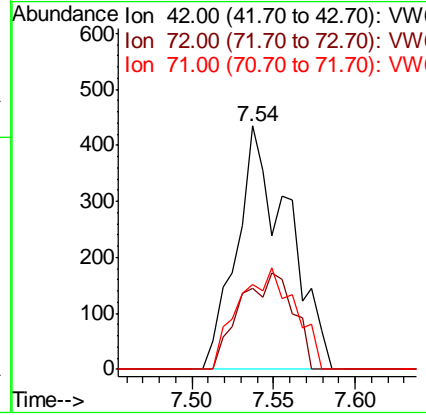
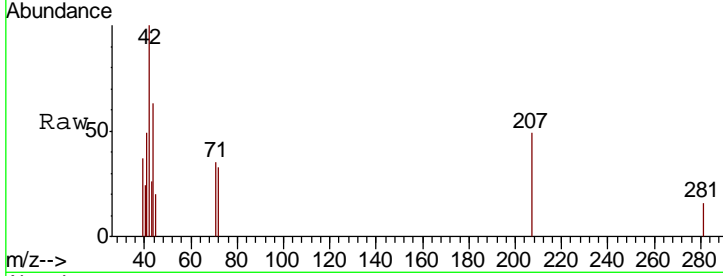




#29
 Tetrahydrofuran
 Concen: 2.596 ug/l
 RT: 7.54 min Scan# 924
 Delta R.T. -0.01 min
 Lab File: VW006103.D
 Acq: 17 Oct 2018 03:56

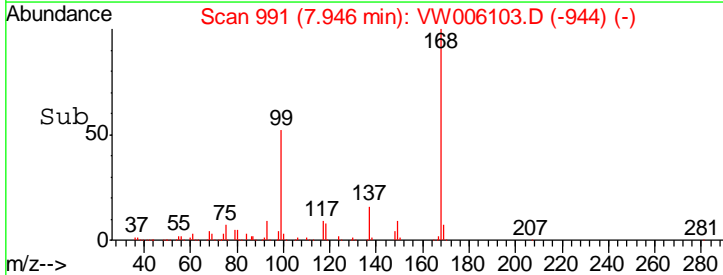
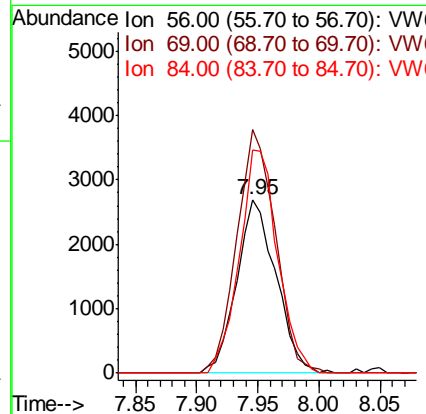
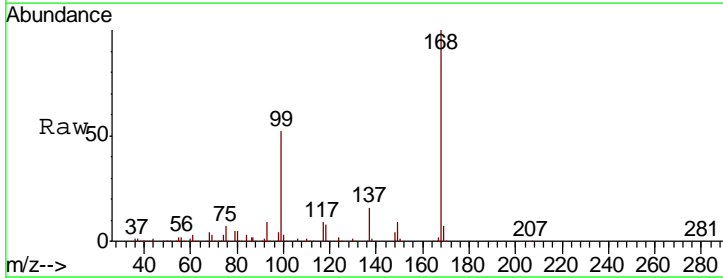
Instrument : MSVOA_W
 ClientSampled : EP1-CUSA-BASE-1

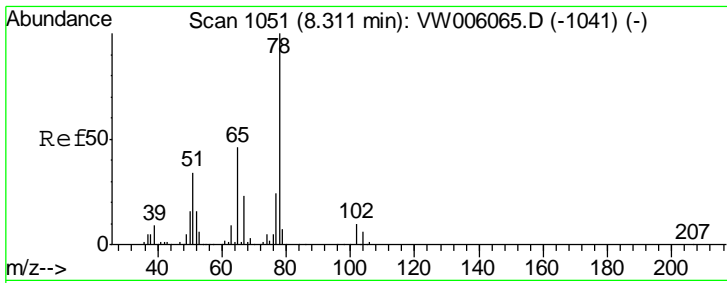
| Tgt Ion | Resp | Lower | Upper |
|---------|------|-------|-------|
| 42 | 100 | | |
| 72 | 41.0 | 38.0 | 57.0 |
| 71 | 45.8 | 35.3 | 52.9 |



#31
 Cyclohexane
 Concen: 1.479 ug/l
 RT: 7.95 min Scan# 991
 Delta R.T. -0.01 min
 Lab File: VW006103.D
 Acq: 17 Oct 2018 03:56

| Tgt Ion | Resp | Lower | Upper |
|---------|-------|-------|--------|
| 56 | 100 | | |
| 69 | 140.1 | 29.4 | 44.0# |
| 84 | 128.4 | 74.0 | 111.0# |

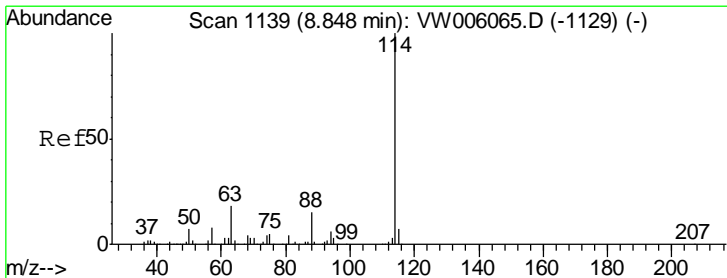
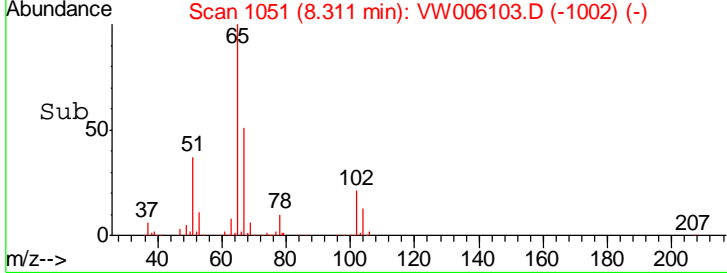
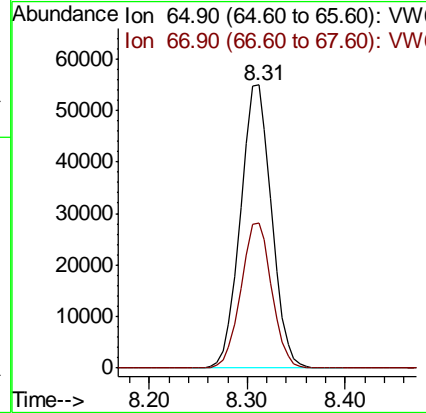
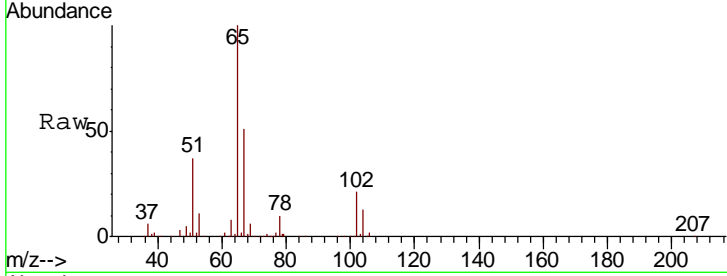




#33
 1,2-Dichloroethane-d4
 Concen: 54.698 ug/l
 RT: 8.31 min Scan# 1051
 Delta R.T. 0.00 min
 Lab File: VW006103.D
 Acq: 17 Oct 2018 03:56

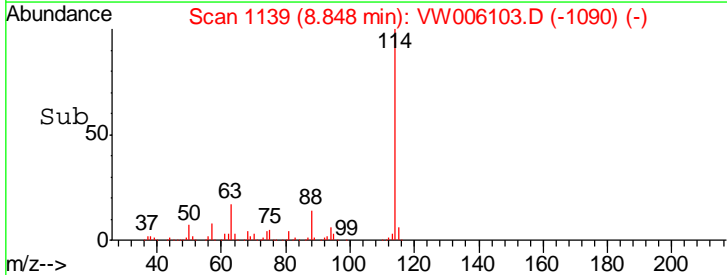
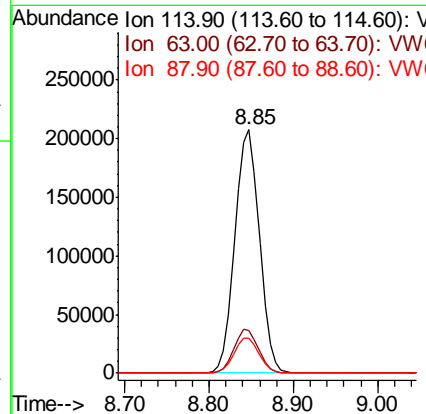
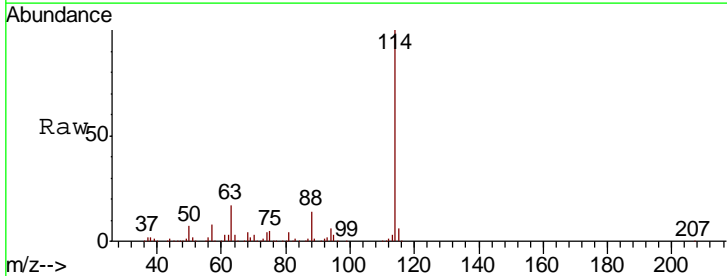
Instrument :
 MSVOA_W
ClientSampled :
 EP1-CUSA-BASE-1

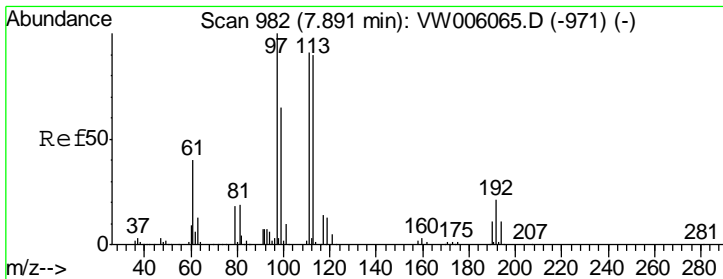
Tgt Ion: 65 Resp: 120918
 Ion Ratio Lower Upper
 65 100
 67 51.0 0.0 101.0



#34
 1,4-Difluorobenzene
 Concen: 50.000 ug/l
 RT: 8.85 min Scan# 1139
 Delta R.T. 0.00 min
 Lab File: VW006103.D
 Acq: 17 Oct 2018 03:56

Tgt Ion: 114 Resp: 409128
 Ion Ratio Lower Upper
 114 100
 63 17.5 0.0 36.8
 88 14.2 0.0 29.0

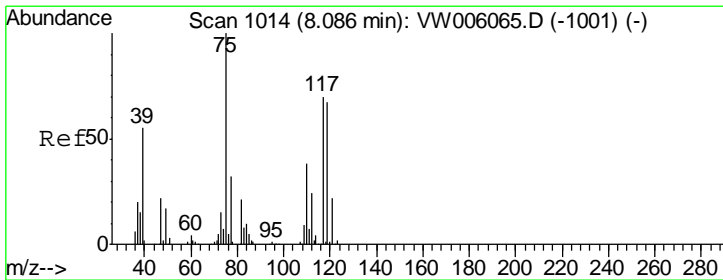
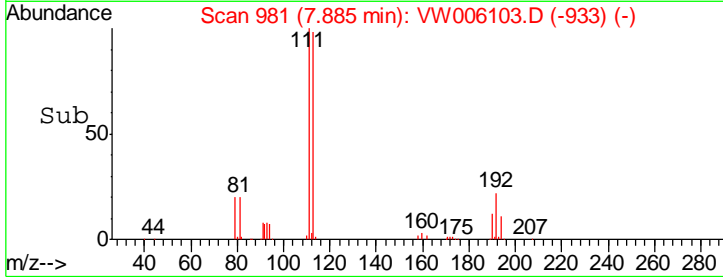
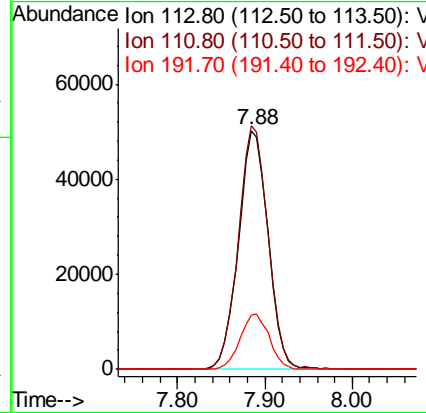
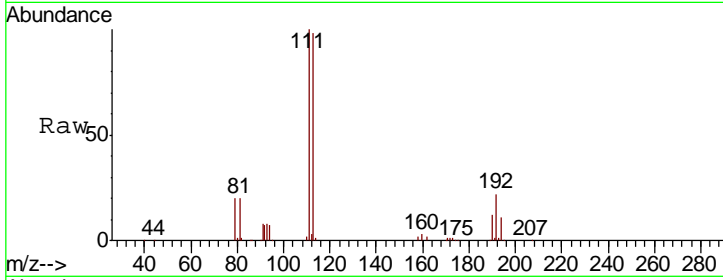




#35
 Dibromofluoromethane
 Concen: 48.819 ug/l
 RT: 7.88 min Scan# 981
 Delta R.T. -0.01 min
 Lab File: VW006103.D
 Acq: 17 Oct 2018 03:56

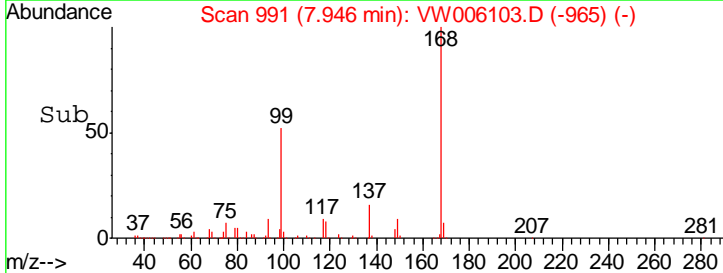
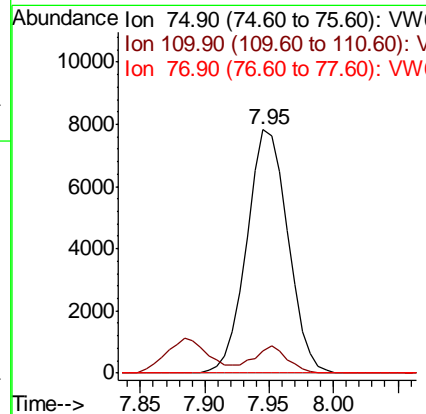
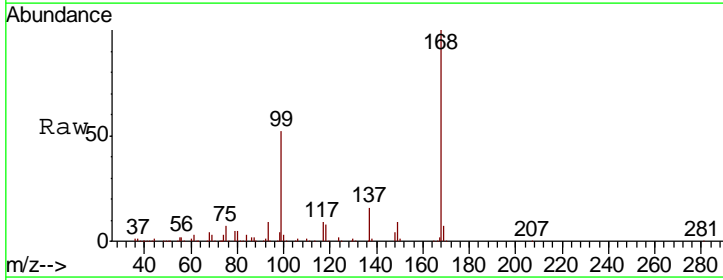
Instrument :
 MSVOA_W
 ClientSampled :
 EP1-CUSA-BASE-1

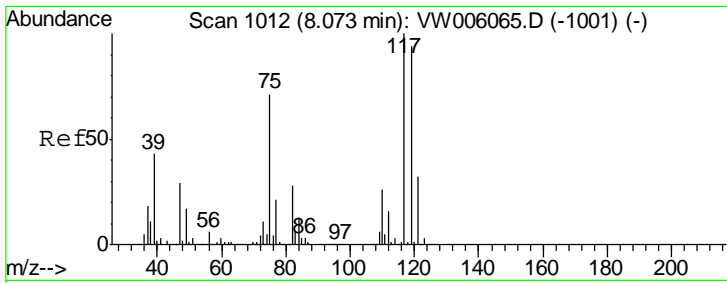
| Tgt Ion | Resp | Lower | Upper |
|---------|--------|-------|-------|
| 113 | 118020 | | |
| 113 | 100 | | |
| 111 | 102.1 | 81.4 | 122.0 |
| 192 | 22.8 | 18.7 | 28.1 |



#36
 1,1-Dichloropropene
 Concen: 4.596 ug/l
 RT: 7.95 min Scan# 991
 Delta R.T. -0.14 min
 Lab File: VW006103.D
 Acq: 17 Oct 2018 03:56

| Tgt Ion | Resp | Lower | Upper |
|---------|-------|-------|-------|
| 75 | 17331 | | |
| 75 | 100 | | |
| 110 | 8.8 | 19.1 | 57.1# |
| 77 | 0.0 | 25.0 | 37.4# |

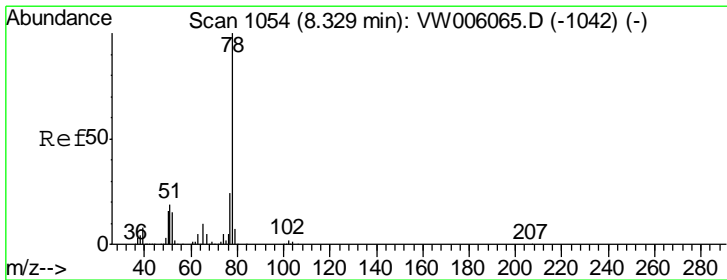
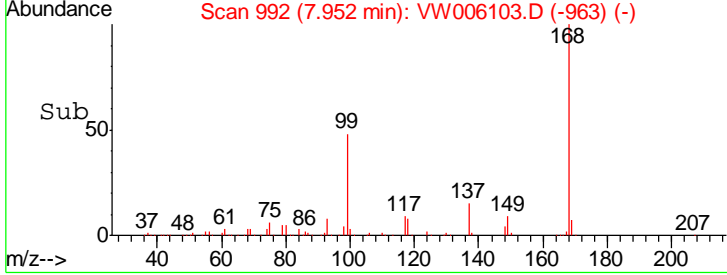
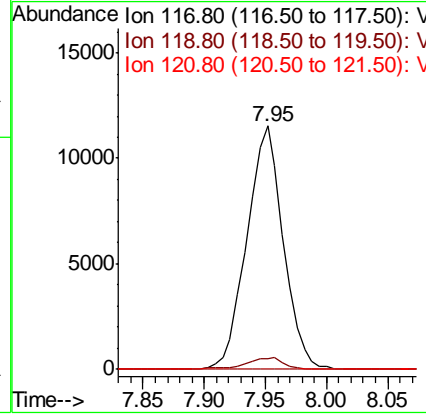
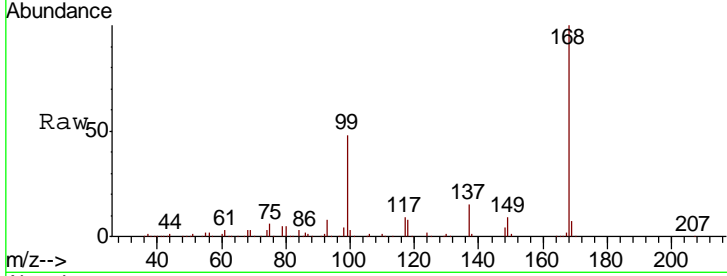




#38
 Carbon Tetrachloride
 Concen: 5.768 ug/l
 RT: 7.95 min Scan# 992
 Delta R.T. -0.12 min
 Lab File: VW006103.D
 Acq: 17 Oct 2018 03:56

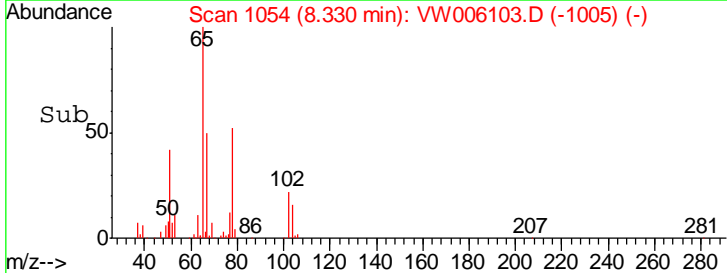
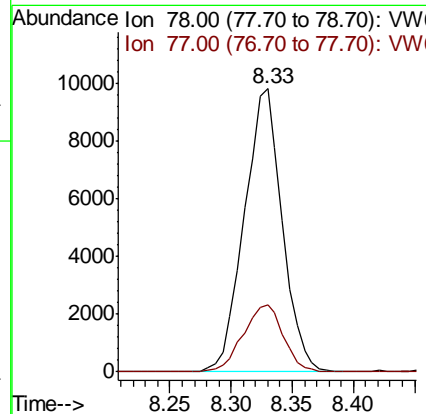
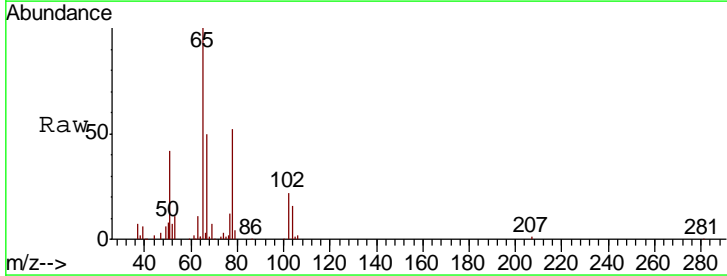
Instrument : MSVOA_W
 ClientSampled : EP1-CUSA-BASE-1

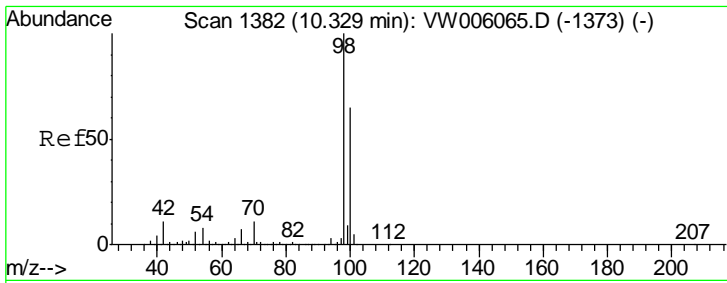
| Tgt Ion | Resp | Lower | Upper |
|---------|------|-------|--------|
| 117 | 100 | | |
| 119 | 4.3 | 75.2 | 112.8# |
| 121 | 0.0 | 25.3 | 37.9# |



#40
 Benzene
 Concen: 2.043 ug/l
 RT: 8.33 min Scan# 1054
 Delta R.T. 0.00 min
 Lab File: VW006103.D
 Acq: 17 Oct 2018 03:56

| Tgt Ion | Resp | Lower | Upper |
|---------|------|-------|-------|
| 78 | 100 | | |
| 77 | 23.6 | 19.4 | 29.0 |

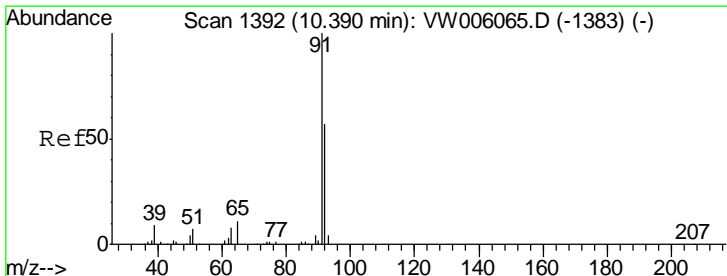
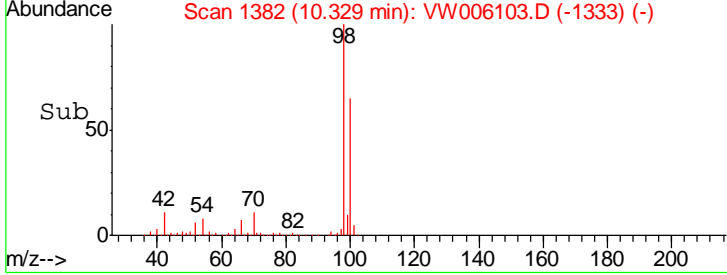
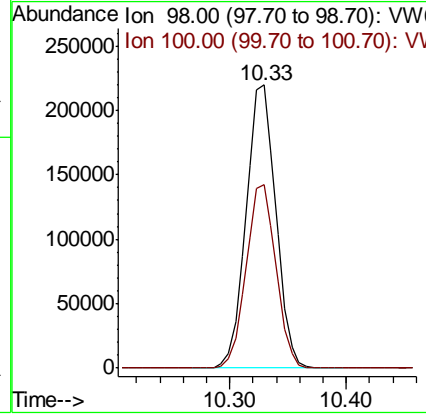
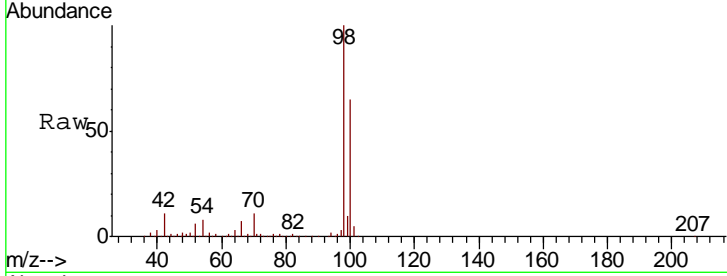




#50
 Toluene-d8
 Concen: 42.674 ug/l
 RT: 10.33 min Scan# 1382
 Delta R.T. 0.00 min
 Lab File: VW006103.D
 Acq: 17 Oct 2018 03:56

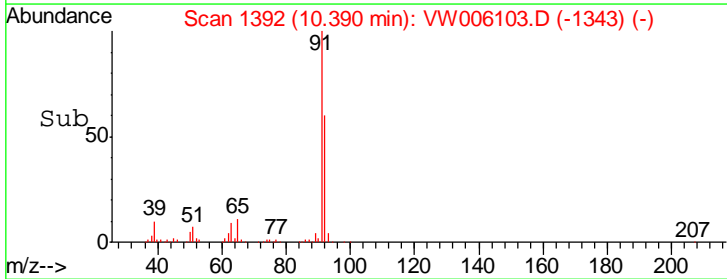
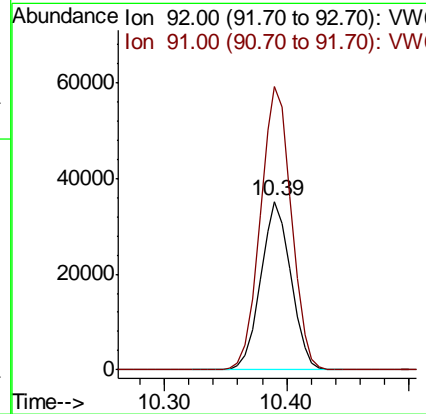
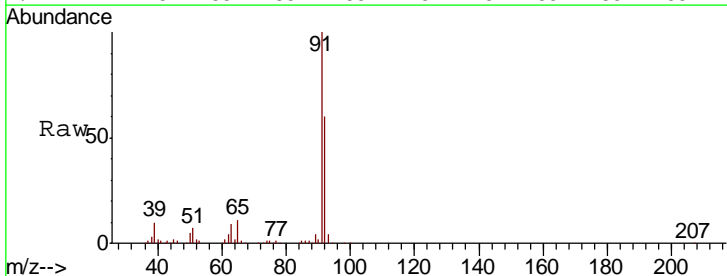
Instrument : MSVOA_W
 ClientSampled : EP1-CUSA-BASE-1

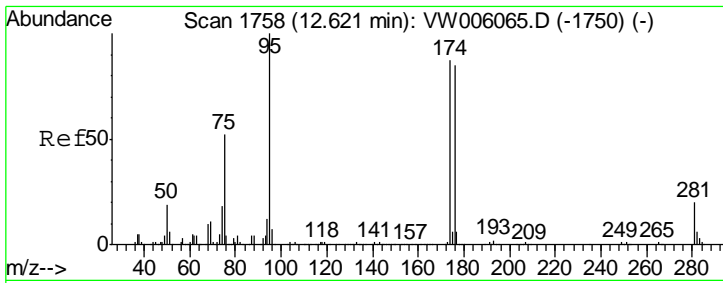
Tgt Ion: 98 Resp: 392489
 Ion Ratio Lower Upper
 98 100
 100 65.1 51.6 77.4



#52
 Toluene
 Concen: 8.691 ug/l
 RT: 10.39 min Scan# 1392
 Delta R.T. 0.00 min
 Lab File: VW006103.D
 Acq: 17 Oct 2018 03:56

Tgt Ion: 92 Resp: 60274
 Ion Ratio Lower Upper
 92 100
 91 172.2 140.0 210.0

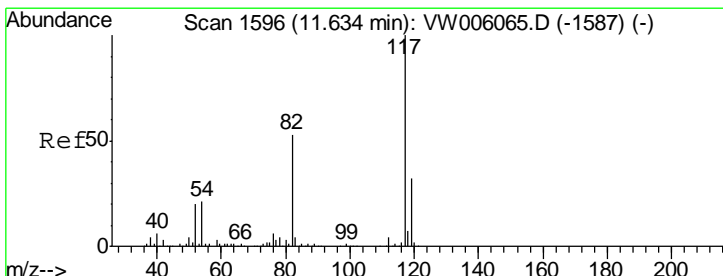
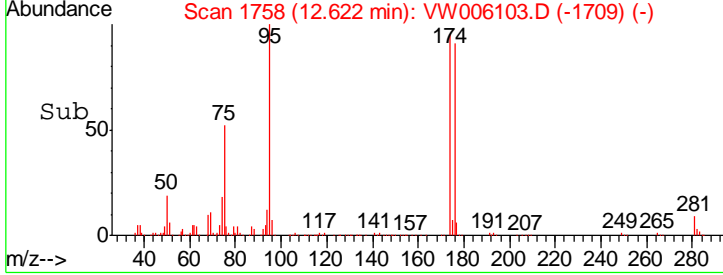
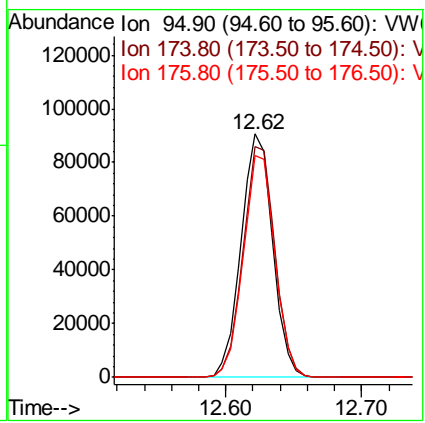
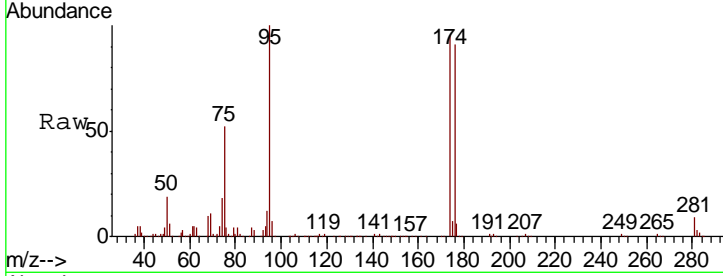




#62
 4-Bromofluorobenzene
 Concen: 42.638 ug/l
 RT: 12.62 min Scan# 1758
 Delta R.T. 0.00 min
 Lab File: VW006103.D
 Acq: 17 Oct 2018 03:56

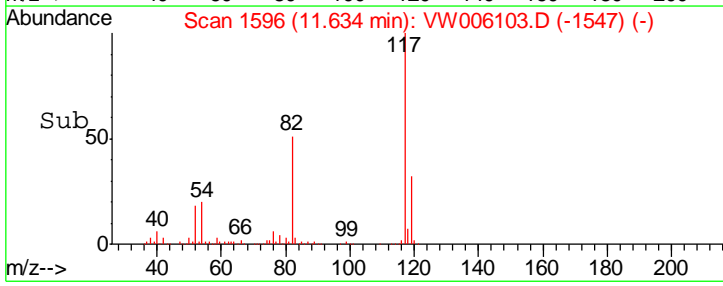
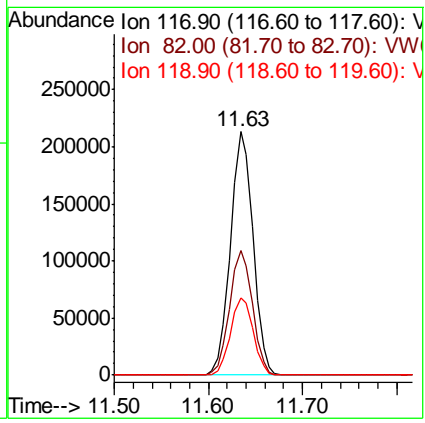
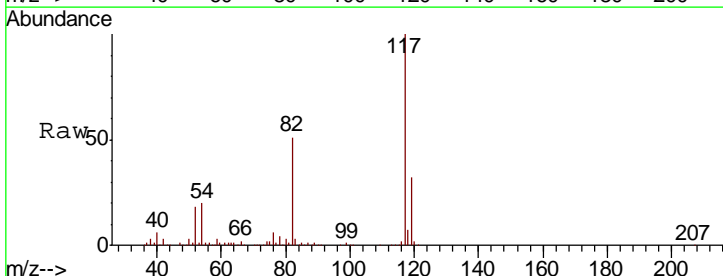
Instrument : MSVOA_W
 ClientSampleId : EP1-CUSA-BASE-1

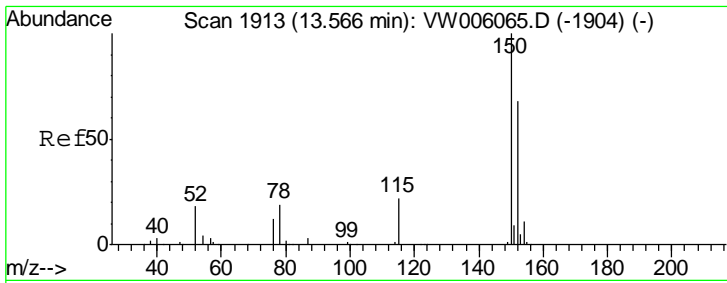
| Tgt Ion | Resp | Lower | Upper |
|---------|--------|-------|-------|
| 95 | 147292 | | |
| 174 | 95.5 | 0.0 | 186.0 |
| 176 | 91.9 | 0.0 | 181.6 |



#63
 Chlorobenzene-d5
 Concen: 50.000 ug/l
 RT: 11.63 min Scan# 1596
 Delta R.T. 0.00 min
 Lab File: VW006103.D
 Acq: 17 Oct 2018 03:56

| Tgt Ion | Resp | Lower | Upper |
|---------|--------|-------|-------|
| 117 | 354089 | | |
| 82 | 50.9 | 42.1 | 63.1 |
| 119 | 31.7 | 25.8 | 38.6 |

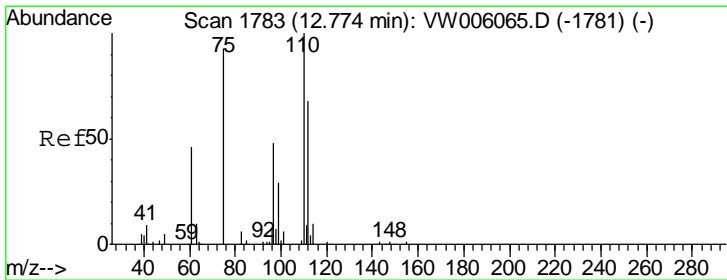
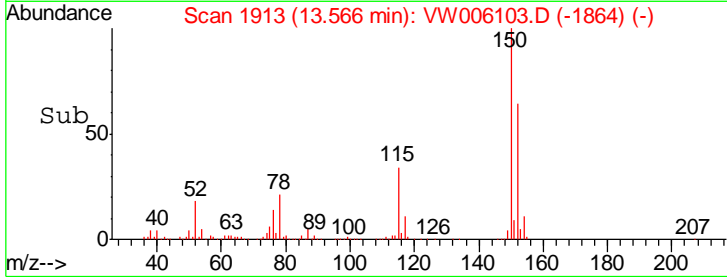
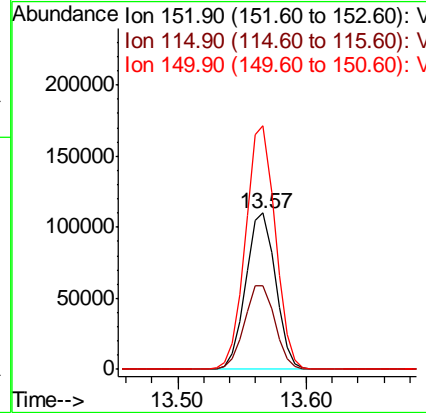
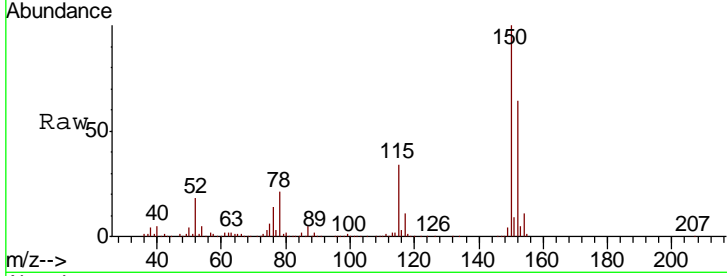




#72
 1,4-Dichlorobenzene-d4
 Concen: 50.000 ug/l
 RT: 13.57 min Scan# 1913
 Delta R.T. 0.00 min
 Lab File: VW006103.D
 Acq: 17 Oct 2018 03:56

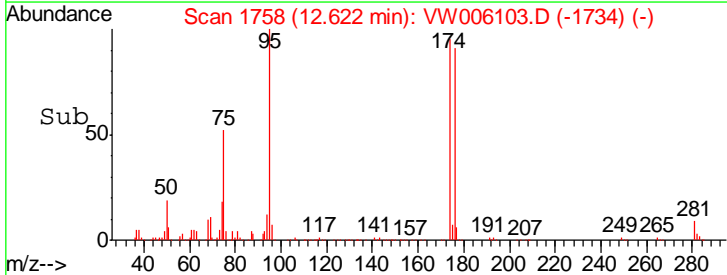
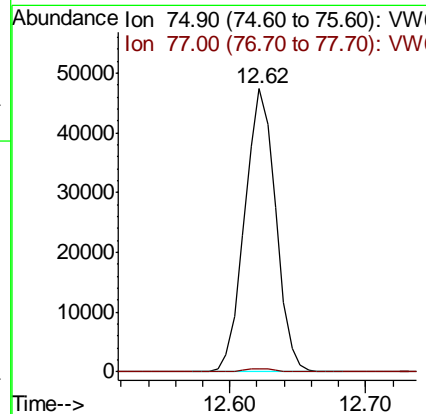
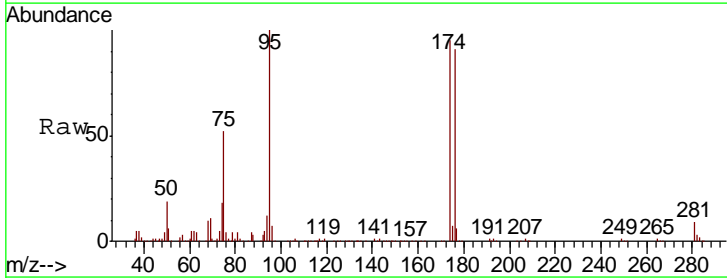
Instrument : MSVOA_W
 ClientSampled : EP1-CUSA-BASE-1

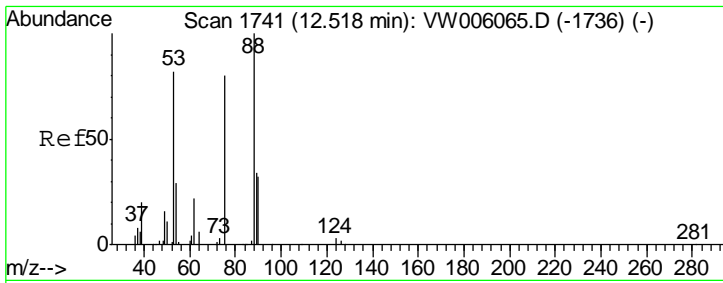
| Tgt Ion | Resp | Lower | Upper |
|---------|--------|-------|-------|
| 152 | 175009 | | |
| 152 | 100 | | |
| 115 | 54.9 | 27.8 | 83.3 |
| 150 | 155.7 | 0.0 | 349.2 |



#76
 1,2,3-Trichloropropane
 Concen: 56.585 ug/l
 RT: 12.62 min Scan# 1758
 Delta R.T. -0.15 min
 Lab File: VW006103.D
 Acq: 17 Oct 2018 03:56

| Tgt Ion | Resp | Lower | Upper |
|---------|-------|-------|-------|
| 75 | 75639 | | |
| 75 | 100 | | |
| 77 | 1.2 | 0.0 | 0.0# |

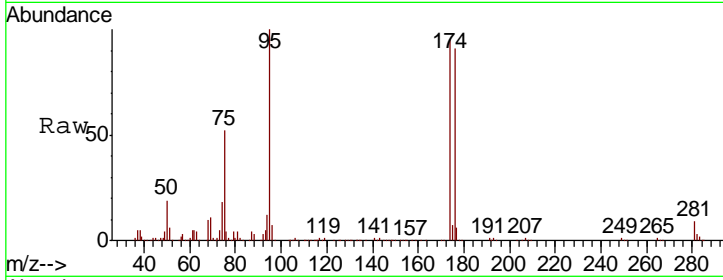




#81
 trans-1,4-Dichloro-2-butene
 Concen: 135.261 ug/l
 RT: 12.62 min Scan# 1758
 Delta R.T. 0.10 min
 Lab File: VW006103.D
 Acq: 17 Oct 2018 03:56

Instrument : MSVOA_W
 ClientSampleId : EP1-CUSA-BASE-1

| Tgt Ion | Resp | Lower | Upper |
|---------|------|-------|--------|
| 75 | 100 | | |
| 53 | 0.0 | 79.8 | 119.6# |
| 89 | 0.0 | 37.5 | 56.3# |



Abundance Ion 74.90 (74.60 to 75.60): VW
 Ion 53.00 (52.70 to 53.70): VW
 Ion 88.90 (88.60 to 89.60): VW

