

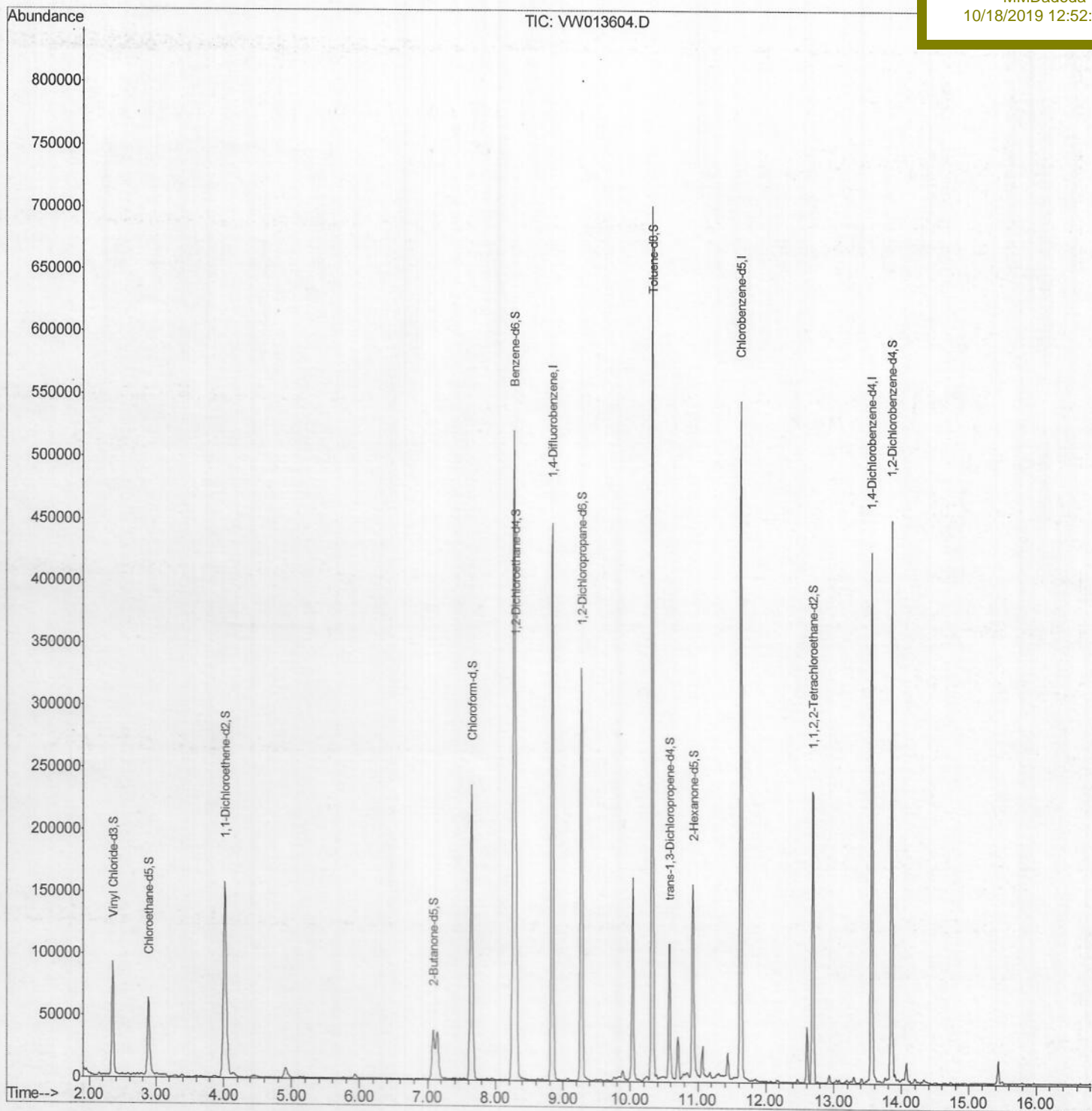
Data Path : Z:\VOASRV\HPCHEM1\MSVOA W\DATA\VW101619\
 Data File : VW013604.D
 Acq On : 16 Oct 2019 17:19
 Operator : SY/VA
 Sample : K5395-01
 Misc : 3.68G/10ML/MSVOA W/SOIL
 ALS Vial : 1 Sample Multiplier: 1

Instrument :
 MSVOA_W
 Client Sampled :
 C0028

Quant Time: Oct 16 19:14:53 2019
 Quant Method : Z:\VOASRV\HPCHEM1\MSVOA_W\METHOD\SOM2WLM101019S.M
 Quant Title : VOC Analysis
 QLast Update : Wed Oct 16 16:38:03 2019
 Response via : Initial Calibration

Manual Integrations
 APPROVED

MMDadoda
 10/18/2019 12:52:09 AM



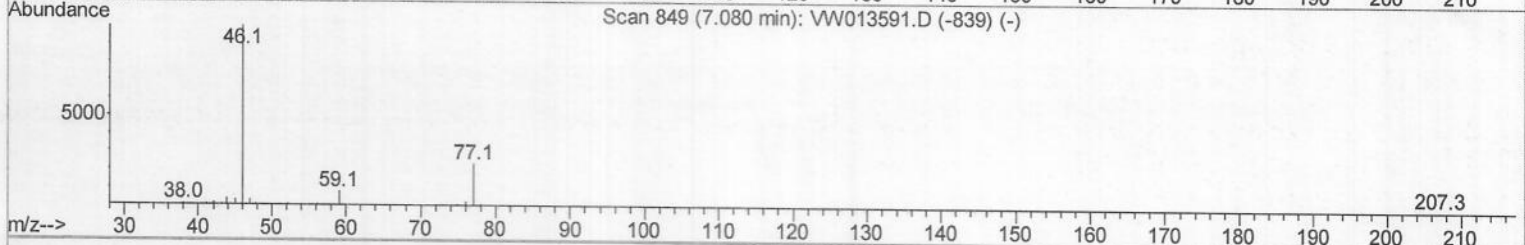
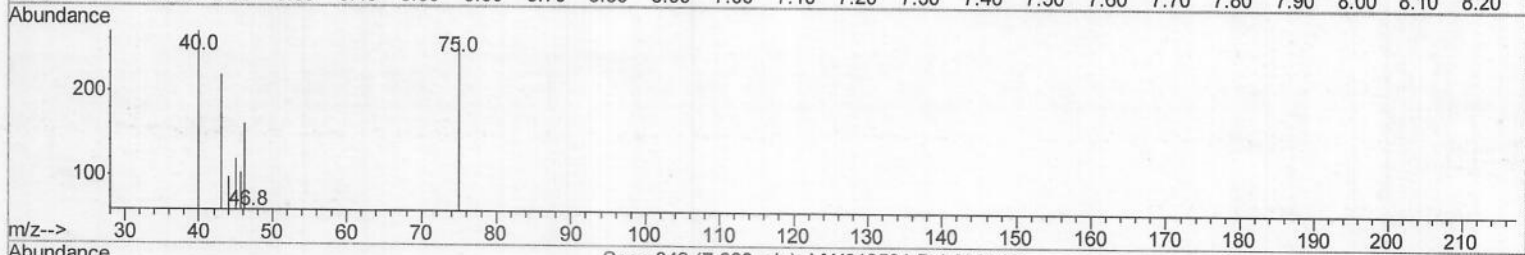
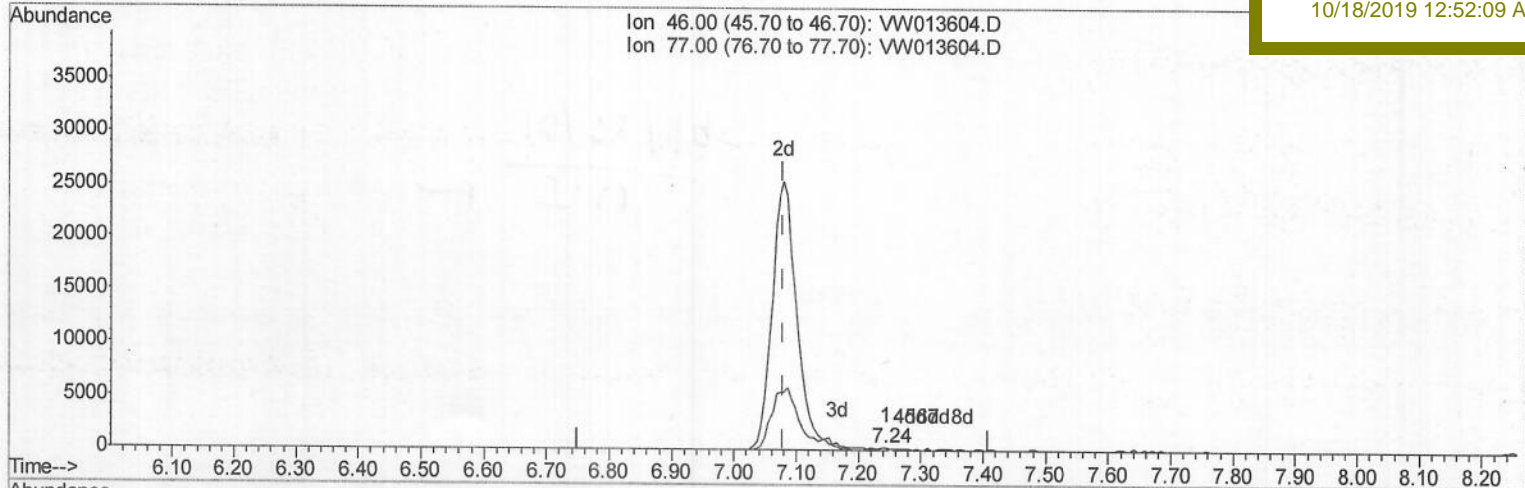
Data Path : Z:\VOASRV\HPCHEM1\MSVOA W\DATA\VW101619\
 Data File : VW013604.D
 Acq On : 16 Oct 2019 17:19
 Operator : SY/VA
 Sample : K5395-01
 Misc : 3.68G/10ML/MSVOA W/SOIL
 ALS Vial : 1 Sample Multiplier: 1

Instrument :
 MSVOA_W
 Client Sampled :
 C0028

Quant Time: Oct 16 17:50:34 2019
 Quant Method : Z:\VOASRV\HPCHEM1\MSVOA_W\METHOD\SOM2WLM101019S.M
 Quant Title : VOC Analysis
 QLast Update : Wed Oct 16 16:38:03 2019
 Response via : Initial Calibration

Manual Integrations
 APPROVED

MMDadoda
 10/18/2019 12:52:09 AM



TIC: VW013604.D

(20) 2-Butanone-d5 (S)
 7.244min (+0.165) 0.21ug/L
 response 293

Ion	Exp%	Act%
46.00	100	100
77.00	25.40	22.87
0.00	0.00	0.00
0.00	0.00	0.00

Quantitation Report (Qedit)

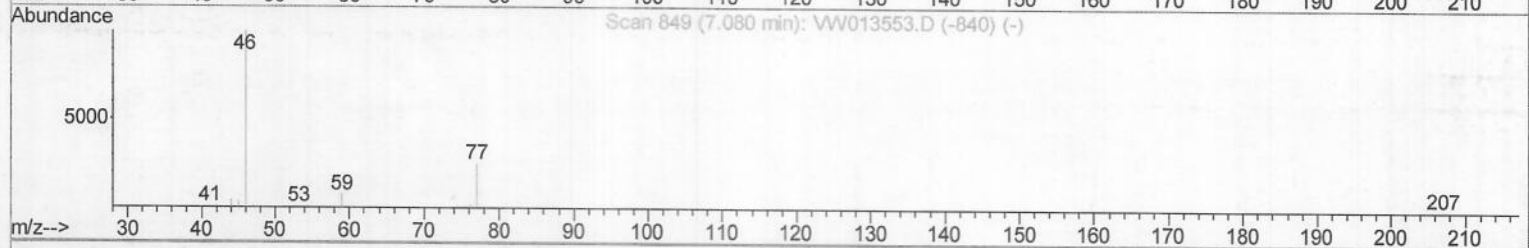
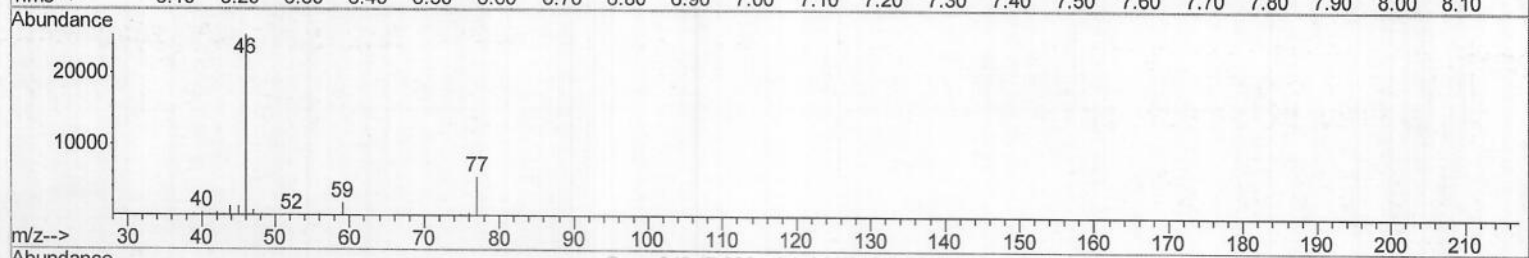
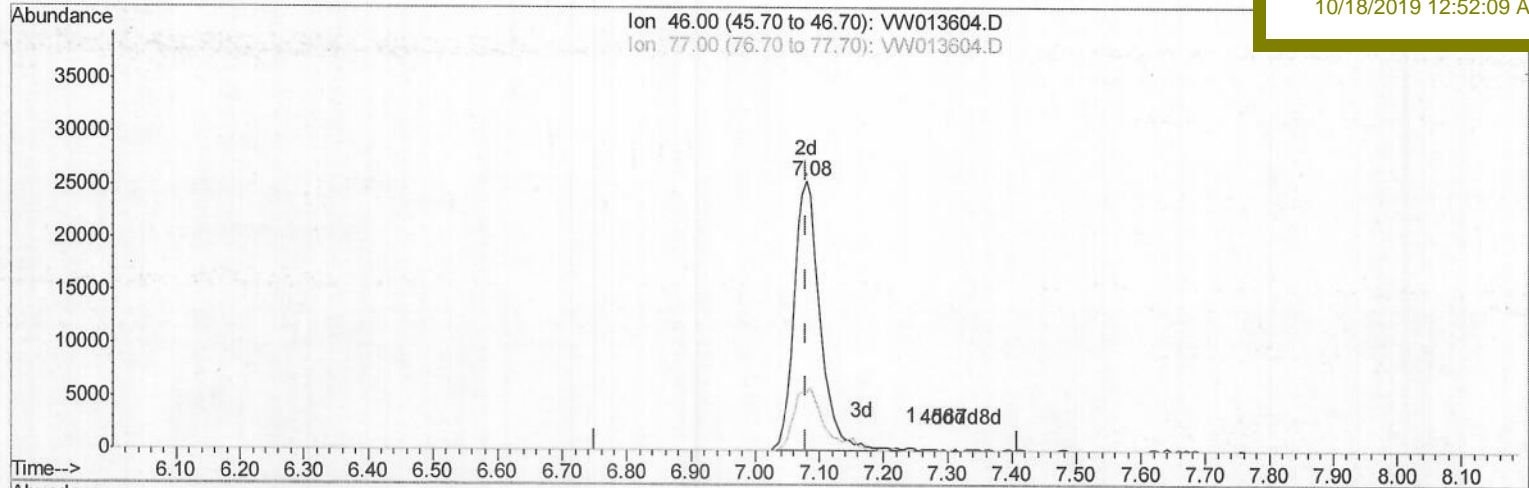
Data Path : Z:\voasrv\HPCHEM1\MSVOA_W\Data\VW101619\
 Data File : VW013604.D
 Acq On : 16 Oct 2019 17:19
 Operator : SY/VA
 Sample : K5395-01
 Misc : 3.68G/10ML/MSVOA_W/SOIL
 ALS Vial : 1 Sample Multiplier: 1

Instrument :
 MSVOA_W
 Client Sampled :
 C0028

Quant Time: Oct 16 18:14:53 2019
 Quant Method : Z:\VOASRV\HPCHEM1\MSVOA_W\METHOD\SOM2WLM101019S.M
 Quant Title : VOC Analysis
 QLast Update : Wed Oct 16 16:38:03 2019
 Response via : Initial Calibration

Manual Integrations
 APPROVED

MMDadoda
 10/18/2019 12:52:09 AM



TIC: VW013604.D

(20) 2-Butanone-d5 (S)

7.080min (+0.000) 52.06ug/L m

response 71108

> 10/17/19 SY

Ion	Exp%	Act%
46.00	100	100
77.00	25.40	0.09#
0.00	0.00	0.00
0.00	0.00	0.00

Data Path : Z:\VOASRV\HPCHEM1\MSVOA W\DATA\VW101619\
 Data File : VW013604.D
 Acq On : 16 Oct 2019 17:19
 Operator : SY/VA
 Sample : K5395-01
 Misc : 3.68G/10ML/MSVOA W/SOIL
 ALS Vial : 1 Sample Multiplier: 1

Instrument :
 MSVOA_W
 Client Sampled :
 C0028

Quant Time: Oct 16 19:14:53 2019
 Quant Method : Z:\VOASRV\HPCHEM1\MSVOA_W\METHOD\SOM2WLM101019S.M
 Quant Title : VOC Analysis
 QLast Update : Wed Oct 16 16:38:03 2019
 Response via : Initial Calibration

Manual Integrations
APPROVED
 MMDadoda
 10/18/2019 12:52:09 AM

Internal Standards	R.T.	QIon	Response	Conc	Units	Dev (Min)
1) 1,4-Difluorobenzene	8.84	114	396202	25.00	ug/L	0.00
28) Chlorobenzene-d5	11.63	117	328717	25.00	ug/L	0.00
60) 1,4-Dichlorobenzene-d4	13.56	152	124355	25.00	ug/L	0.00

System Monitoring Compounds	R.T.	QIon	Response	Conc	Units	Dev (Min)
4) Vinyl Chloride-d3	2.35	65	96816	21.35	ug/L	0.00
Spiked Amount 25.000	Range 30 - 150		Recovery = 85.40%			
7) Chloroethane-d5	2.89	69	82192	23.61	ug/L	0.00
Spiked Amount 25.000	Range 30 - 150		Recovery = 94.44%			
10) 1,1-Dichloroethene-d2	4.02	63	175071	18.60	ug/L	0.00
Spiked Amount 25.000	Range 45 - 110		Recovery = 74.40%			
20) 2-Butanone-d5	7.08	46	71108m	52.06	ug/L	0.00
Spiked Amount 50.000	Range 20 - 135		Recovery = 104.12%			
24) Chloroform-d	7.65	84	245960	28.58	ug/L	0.00
Spiked Amount 25.000	Range 40 - 150		Recovery = 114.32%			
26) 1,2-Dichloroethane-d4	8.30	65	135035	30.28	ug/L	0.00
Spiked Amount 25.000	Range 70 - 130		Recovery = 121.12%			
29) Benzene-d6	8.27	84	534071	30.33	ug/L	0.00
Spiked Amount 25.000	Range 20 - 135		Recovery = 121.32%			
33) 1,2-Dichloropropane-d6	9.27	67	162479	31.10	ug/L	0.00
Spiked Amount 25.000	Range 70 - 120		Recovery = 124.40%#			
37) Toluene-d8	10.32	98	480577	28.75	ug/L	0.00
Spiked Amount 25.000	Range 30 - 130		Recovery = 115.00%			
38) trans-1,3-Dichloropropene-	10.58	79	62462	26.84	ug/L	0.00
Spiked Amount 25.000	Range 30 - 135		Recovery = 107.36%			
39) 2-Hexanone-d5	10.93	63	55951	53.54	ug/L	0.00
Spiked Amount 50.000	Range 20 - 135		Recovery = 107.08%			
48) 1,1,2,2-Tetrachloroethane-	12.69	84	121973	29.12	ug/L	0.00
Spiked Amount 25.000	Range 45 - 120		Recovery = 116.48%			
61) 1,2-Dichlorobenzene-d4	13.85	152	129209	28.91	ug/L	0.00
Spiked Amount 25.000	Range 75 - 120		Recovery = 115.64%			

> 10/12/1959

Target Compounds Ovalue

(#) = qualifier out of range (m) = manual integration (+) = signals summed