

Data Path : Z:\VOASRV\HPCHEM1\MSVOA W\DATA\VW101718\  
 Data File : VW006132.D  
 Acq On : 17 Oct 2018 17:45  
 Operator : VA/AP  
 Sample : J5577-01  
 Misc : 5.5G/5ML/MSVOA W/SOIL  
 ALS Vial : 14 Sample Multiplier: 1

Instrument :  
 MSVOA\_W  
 ClientSampleId :  
 SSSI-1016-S-DH-22

Integration Parameters: RTEINT.P

Integrator: RTE  
 Smoothing : ON Filtering: 5  
 Sampling : 1 Min Area: 3 % of largest Peak  
 Start Thrs: 0.2 Max Peaks: 100  
 Stop Thrs : 0 Peak Location: TOP

If leading or trailing edge < 100 prefer < Baseline drop else tangent >  
 Peak separation: 5

Method : Z:\VOASRV\HPCHEM1\MSVOA\_W\METHOD\82W101518S.M  
 Title : SW846 8260

Signal : TIC

peak #	R.T. min	first scan	max scan	last scan	PK TY	peak height	corr. area	corr. % max.	% of total
1	4.135	354	366	379	rBV	20629	62790	5.40%	0.897%
2	4.915	482	494	514	rVB2	19011	65997	5.68%	0.943%
3	7.153	852	861	872	rBV	20822	62165	5.35%	0.889%
4	7.891	971	982	986	rBV	168287	383538	33.01%	5.482%
5	7.952	986	992	1003	rVB	352798	778572	67.01%	11.129%
6	8.311	1042	1051	1065	rBV	142011	314778	27.09%	4.499%
7	8.848	1130	1139	1149	rBV	474499	922403	79.39%	13.184%
8	10.329	1374	1382	1389	rBV	634913	1120052	96.40%	16.010%
9	10.390	1389	1392	1400	rVB	16246	27413	2.36%	0.392%
10	10.713	1439	1445	1450	rBV2	8088	14182	1.22%	0.203%
11	11.634	1588	1596	1607	rBV	638658	1091015	93.91%	15.595%
12	11.847	1620	1631	1640	rBV2	8556	17074	1.47%	0.244%
13	12.621	1751	1758	1768	rVB2	543819	910327	78.35%	13.012%
14	12.938	1805	1810	1816	rVB4	7128	12291	1.06%	0.176%
15	13.566	1906	1913	1920	rVB	724188	1161826	100.00%	16.607%
16	14.085	1991	1998	2004	rVB	24210	39806	3.43%	0.569%
17	15.517	2226	2233	2239	rBV2	6313	11915	1.03%	0.170%

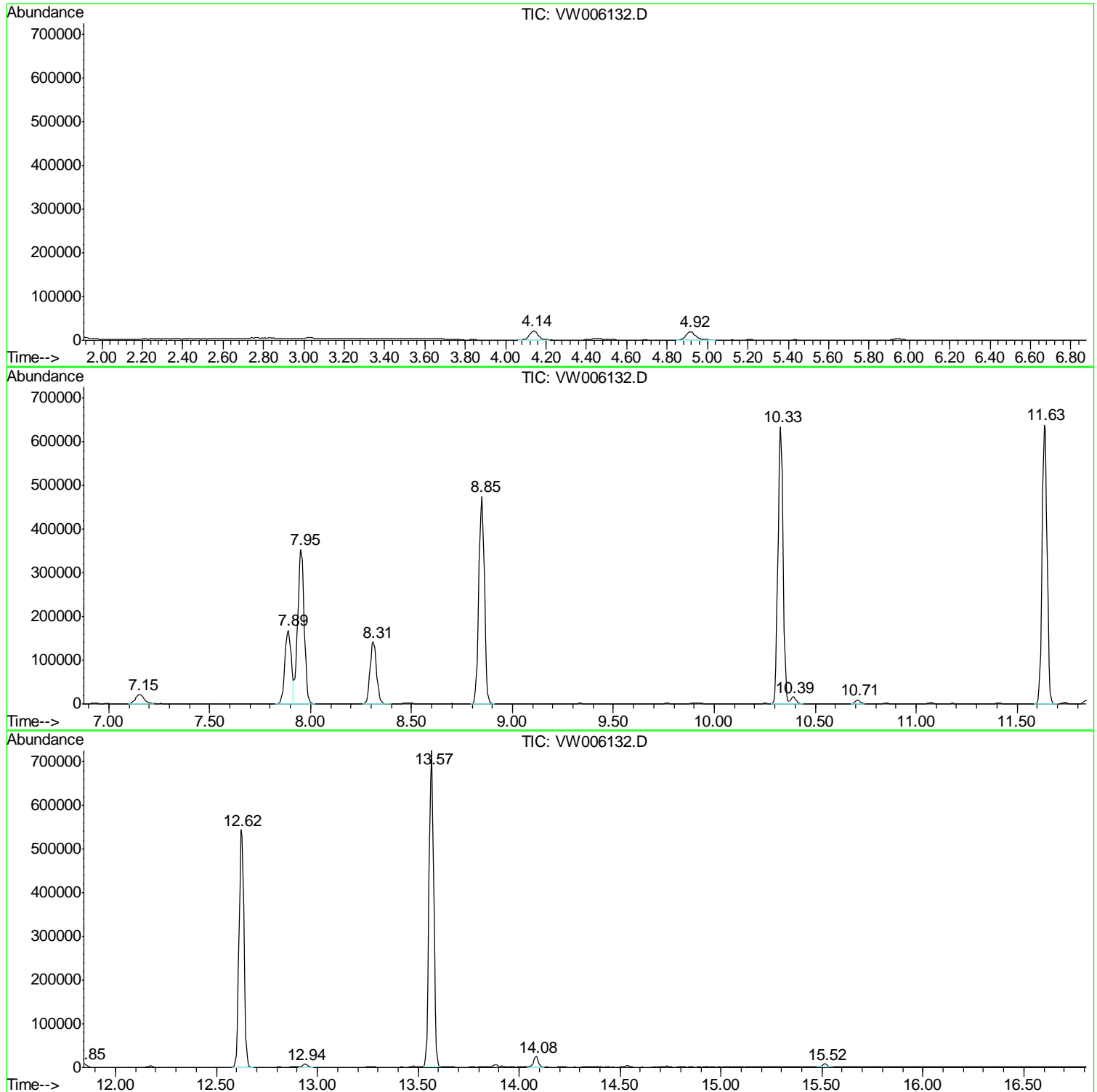
Sum of corrected areas: 6996144

Data Path : Z:\VOASRV\HPCHEM1\MSVOA W\DATA\VW101718\  
Data File : VW006132.D  
Acq On : 17 Oct 2018 17:45  
Operator : VA/AP  
Sample : J5577-01  
Misc : 5.5G/5ML/MSVOA W/SOIL  
ALS Vial : 14 Sample Multiplier: 1

Instrument :  
MSVOA\_W  
ClientSampled :  
SSSI-1016-S-DH-22

Quant Method : Z:\VOASRV\HPCHEM1\MSVOA\_W\METHOD\82W101518S.M  
Quant Title : SW846 8260

TIC Library : C:\DATABASE\NIST11.L  
TIC Integration Parameters: LSCINT.P



Data Path : Z:\VOASRV\HPCHEM1\MSVOA\_W\DATA\VW101718\  
Data File : VW006132.D  
Acq On : 17 Oct 2018 17:45  
Operator : VA/AP  
Sample : J5577-01  
Misc : 5.5G/5ML/MSVOA\_W/SOIL  
ALS Vial : 14 Sample Multiplier: 1

Instrument :  
MSVOA\_W  
ClientSampleId :  
SSSI-1016-S-DH-22

Quant Method : Z:\VOASRV\HPCHEM1\MSVOA\_W\METHOD\82W101518S.M  
Quant Title : SW846 8260

TIC Library : C:\DATABASE\NIST11.L  
TIC Integration Parameters: LSCINT.P

No Library Search Compounds Detected

\*\*\*\*\*

Data Path : Z:\VOASRV\HPCHEM1\MSVOA\_W\DATA\VW101718\  
Data File : VW006132.D  
Acq On : 17 Oct 2018 17:45  
Operator : VA/AP  
Sample : J5577-01  
Misc : 5.5G/5ML/MSVOA\_W/SOIL  
ALS Vial : 14 Sample Multiplier: 1

Instrument :  
MSVOA\_W  
ClientSampleId :  
SSSI-1016-S-DH-22

Quant Method : Z:\VOASRV\HPCHEM1\MSVOA\_W\METHOD\82W101518S.M  
Quant Title : SW846 8260

TIC Library : C:\DATABASE\NIST11.L  
TIC Integration Parameters: LSCINT.P

TIC Top Hit name	RT	EstConc	Units	Response	--Internal Standard--			
					#	RT	Resp	Conc

---