

Data Path : Z:\voasrv\HPCHEM1\MSVOA_W\Data\VW101724\
 Data File : VW030630.D
 Acq On : 17 Oct 2024 11:43
 Operator : SY/MD
 Sample : P4414-01
 Misc : 5.00g/10mL/MSVOA_W/SOIL
 ALS Vial : 6 Sample Multiplier: 1

Instrument :
 MSVOA_W
 ClientSampleId :

Quant Time: Oct 18 01:39:43 2024
 Quant Method : Z:\voasrv\HPCHEM1\MSVOA_W\Method\SFAMWLM100924SMA.M
 Quant Title : SFAM01.0
 QLast Update : Fri Oct 18 01:38:16 2024
 Response via : Initial Calibration

Compound	R.T.	QIon	Response	Conc	Units	Dev(Min)
Internal Standards						
1) 1,4-Difluorobenzene	8.843	114	261198	25.000	ug/L	0.00
28) Chlorobenzene-d5	11.629	117	242113	25.000	ug/L	0.00
58) 1,4-Dichlorobenzene-d4	13.550	152	117100	25.000	ug/L	0.00
System Monitoring Compounds						
4) Vinyl Chloride-d3	2.363	65	68417	16.664	ug/L	0.00
Spiked Amount	25.000	Range 30 - 150	Recovery =	66.640%		
7) Chloroethane-d5	2.899	69	60634	19.510	ug/L	0.00
Spiked Amount	25.000	Range 30 - 150	Recovery =	78.040%		
11) 1,1-Dichloroethene-d2	4.015	65	28539	16.713	ug/L	0.00
Spiked Amount	25.000	Range 45 - 110	Recovery =	66.840%		
21) 2-Butanone-d5	7.075	46	32289	43.701	ug/L	0.00
Spiked Amount	50.000	Range 20 - 135	Recovery =	87.400%		
24) Chloroform-d	7.648	84	174845	23.407	ug/L	0.00
Spiked Amount	25.000	Range 40 - 150	Recovery =	93.640%		
26) 1,2-Dichloroethane-d4	8.215	65	60	0.015	ug/L	-0.09
Spiked Amount	25.000	Range 70 - 130	Recovery =	0.080%#		
32) Benzene-d6	8.276	84	259023	18.433	ug/L	0.00
Spiked Amount	25.000	Range 20 - 135	Recovery =	73.720%		
36) 1,2-Dichloropropane-d6	9.276	67	81466	19.752	ug/L	0.00
Spiked Amount	25.000	Range 70 - 120	Recovery =	79.000%		
41) Toluene-d8	10.325	98	250578	19.534	ug/L	0.00
Spiked Amount	25.000	Range 30 - 130	Recovery =	78.120%		
43) trans-1,3-Dichloroprop...	10.574	79	33111	19.172	ug/L	0.00
Spiked Amount	25.000	Range 30 - 135	Recovery =	76.680%		
47) 2-Hexanone-d5	10.922	63	24523	46.163	ug/L	0.00
Spiked Amount	50.000	Range 20 - 135	Recovery =	92.320%		
56) 1,1,2,2-Tetrachloroeth...	12.690	84	69184	22.841	ug/L	0.00
Spiked Amount	25.000	Range 45 - 120	Recovery =	91.360%		
66) 1,2-Dichlorobenzene-d4	13.848	152	78776	19.882	ug/L	0.00
Spiked Amount	25.000	Range 75 - 120	Recovery =	79.520%		
Target Compounds						
12) 1,1-Dichloroethene	4.045	96	141336	40.331	ug/L	84
13) Acetone	4.124	43	55239	51.066	ug/L	99
16) Methylene chloride	4.917	84	309163	78.294	ug/L	96
17) trans-1,2-Dichloroethene	5.429	96	116310	30.758	ug/L	98
18) Methyl tert-butyl Ether	5.429	73	214332	40.499	ug/L	99
19) 1,1-Dichloroethane	6.215	63	630176	89.666	ug/L	99
22) 2-Butanone	7.167	43	205503	176.246	ug/L	96
25) Chloroform	7.679	83	676858	90.122	ug/L	99
30) 1,1,1-Trichloroethane	7.874	97	4405	0.685	ug/L #	93
31) Carbon tetrachloride	8.069	117	92674	16.144	ug/L	96
33) Benzene	8.325	78	1029823	65.362	ug/L	100
34) Trichloroethene	9.093	95	410496	93.650	ug/L	97
37) 1,2-Dichloropropane	9.367	63	145315	36.928	ug/L	100
39) cis-1,3-Dichloropropene	10.075	75	369288	62.217	ug/L	95
40) 4-Methyl-2-pentanone	10.209	43	276671	146.354	ug/L	99
44) trans-1,3-Dichloropropene	10.605	75	353801	70.934	ug/L	100
45) 1,1,2-Trichloroethane	10.788	97	135326	47.584	ug/L	98
50) 1,2-Dibromoethane	11.233	107	116899	44.051	ug/L	98
53) m,p-Xylene	11.830	106	344763	47.979	ug/L	98

Data Path : Z:\voasrv\HPCHEM1\MSVOA_W\Data\VW101724\
 Data File : VW030630.D
 Acq On : 17 Oct 2024 11:43
 Operator : SY/MD
 Sample : P4414-01
 Misc : 5.00g/10mL/MSVOA_W/SOIL
 ALS Vial : 6 Sample Multiplier: 1

Instrument :
 MSVOA_W
 ClientSampleId :

Quant Time: Oct 18 01:39:43 2024
 Quant Method : Z:\voasrv\HPCHEM1\MSVOA_W\Method\SFAMWLM100924SMA.M
 Quant Title : SFAM01.0
 QLast Update : Fri Oct 18 01:38:16 2024
 Response via : Initial Calibration

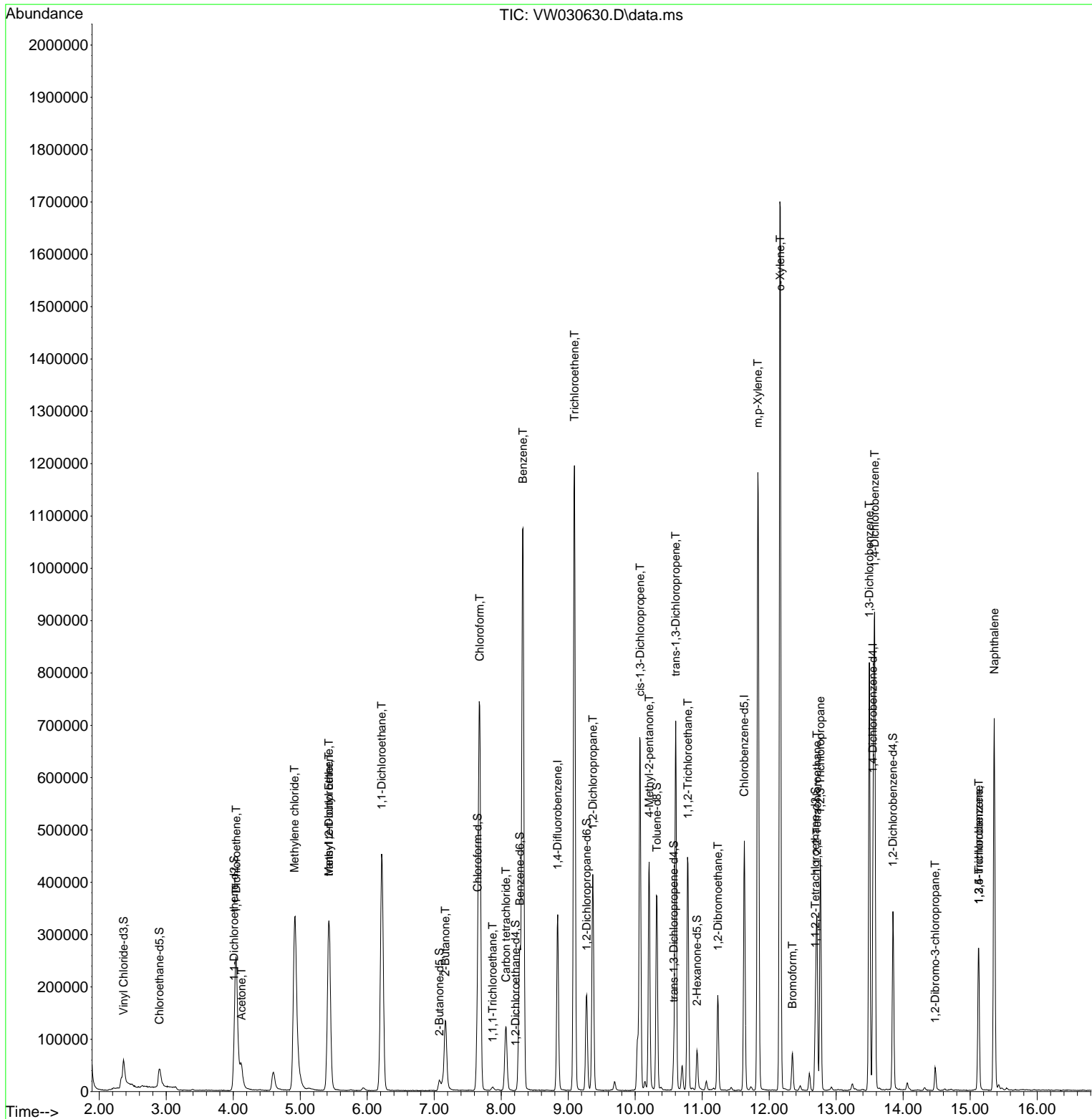
Compound	R.T.	QIon	Response	Conc	Units	Dev(Min)
54) o-Xylene	12.166	106	427595	64.366	ug/L	88
57) 1,1,2,2-Tetrachloroethane	12.714	83	148651	46.350	ug/L	92
59) Bromoform	12.349	173	29651	18.022	ug/L	99
61) 1,2,3-Trichloropropane	12.763	75	169515	74.393	ug/L	99
64) 1,3-Dichlorobenzene	13.495	146	308653	39.102	ug/L	92
65) 1,4-Dichlorobenzene	13.574	146	295273	36.228	ug/L	92
68) 1,2-Dibromo-3-chloropr...	14.476	75	10862	21.379	ug/L	90
69) 1,3,5-Trichlorobenzene	15.129	180	81356	15.630	ug/L	94
70) 1,2,4-trichlorobenzene	15.129	180	81356	19.415	ug/L	98
71) Naphthalene	15.360	128	548348	75.743	ug/L	100

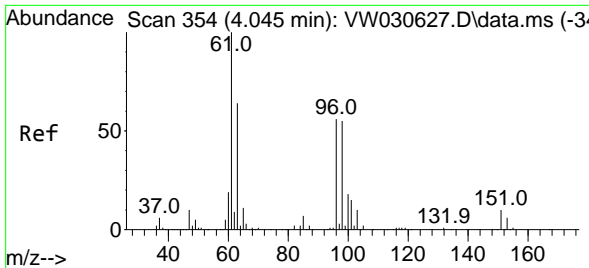
(#) = qualifier out of range (m) = manual integration (+) = signals summed

Data Path : Z:\voasrv\HPCHEM1\MSVOA_W\Data\VW101724\
 Data File : VW030630.D
 Acq On : 17 Oct 2024 11:43
 Operator : SY/MD
 Sample : P4414-01
 Misc : 5.00g/10mL/MSVOA_W/SOIL
 ALS Vial : 6 Sample Multiplier: 1

Instrument :
 MSVOA_W
 ClientSampleId :

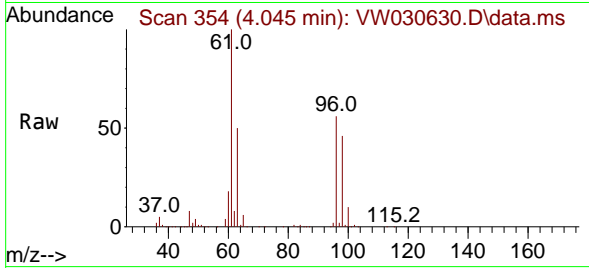
Quant Time: Oct 18 01:39:43 2024
 Quant Method : Z:\voasrv\HPCHEM1\MSVOA_W\Method\SFAMWLM100924SMA.M
 Quant Title : SFAM01.0
 QLast Update : Fri Oct 18 01:38:16 2024
 Response via : Initial Calibration



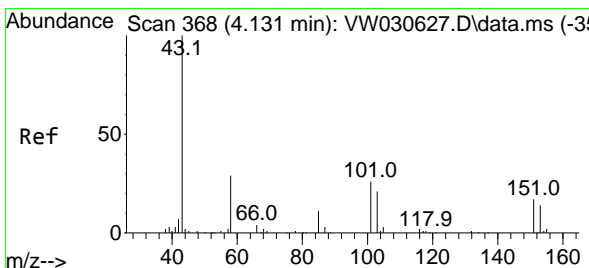
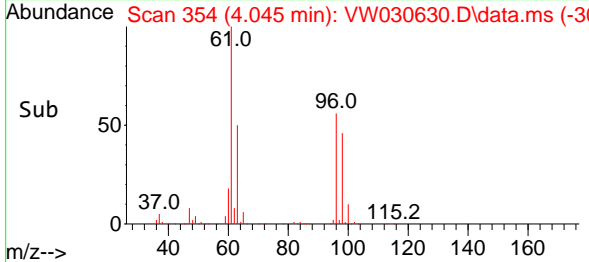
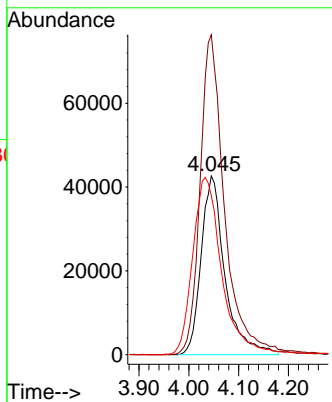


#12
 1,1-Dichloroethene
 Concen: 40.331 ug/L
 RT: 4.045 min Scan# 311
 Delta R.T. -0.000 min
 Lab File: VW030630.D
 Acq: 17 Oct 2024 11:43

Instrument :
 MSVOA_W
 ClientSampleId :

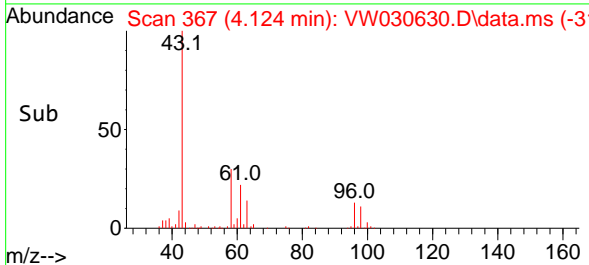
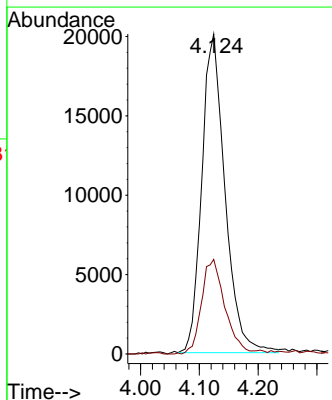
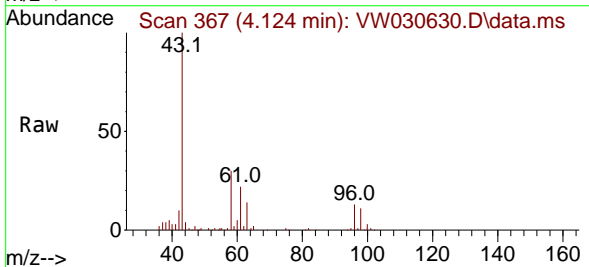


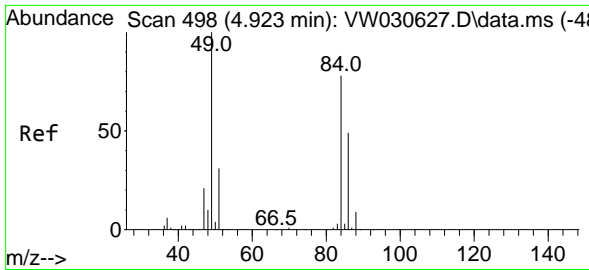
Tgt Ion: 96 Resp: 141336
 Ion Ratio Lower Upper
 96 100
 61 179.0 121.3 225.3
 63 88.9 87.6 162.8



#13
 Acetone
 Concen: 51.066 ug/L
 RT: 4.124 min Scan# 367
 Delta R.T. -0.006 min
 Lab File: VW030630.D
 Acq: 17 Oct 2024 11:43

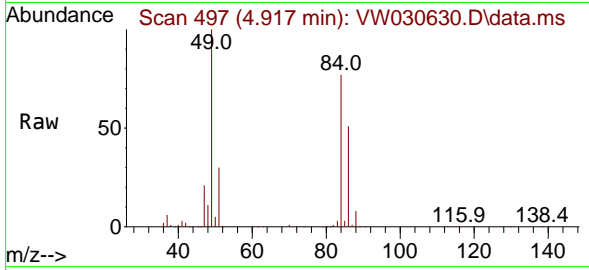
Tgt Ion: 43 Resp: 55239
 Ion Ratio Lower Upper
 43 100
 58 29.6 0.0 57.6





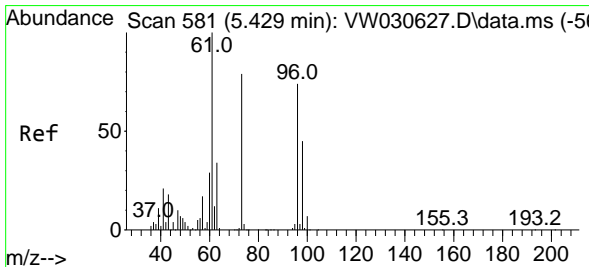
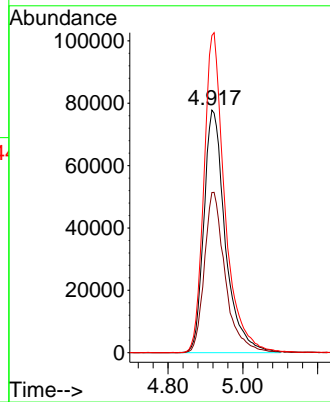
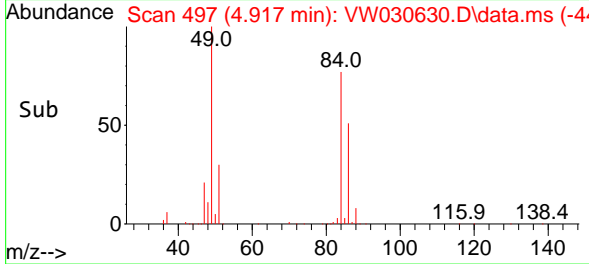
#16
 Methylene chloride
 Concen: 78.294 ug/L
 RT: 4.917 min Scan# 497
 Delta R.T. -0.006 min
 Lab File: VW030630.D
 Acq: 17 Oct 2024 11:43

Instrument :
 MSVOA_W
 ClientSampled :

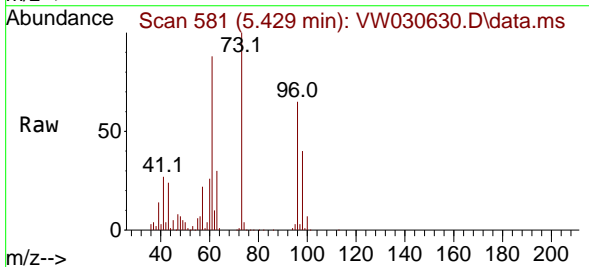


Tgt Ion: 84 Resp: 309163

Ion	Ratio	Lower	Upper
84	100		
86	66.0	43.8	81.3
49	130.7	88.3	164.1

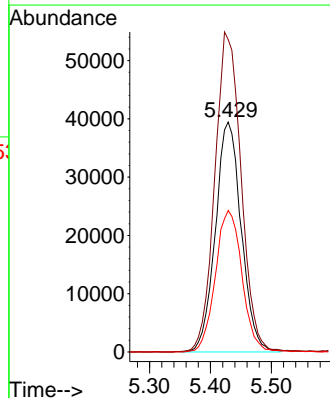
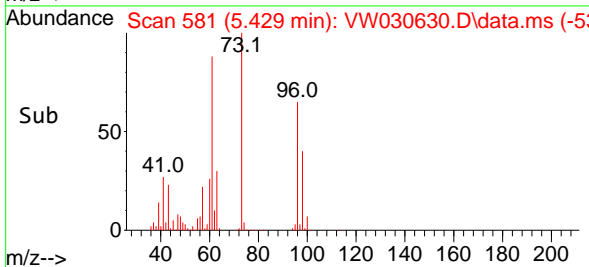


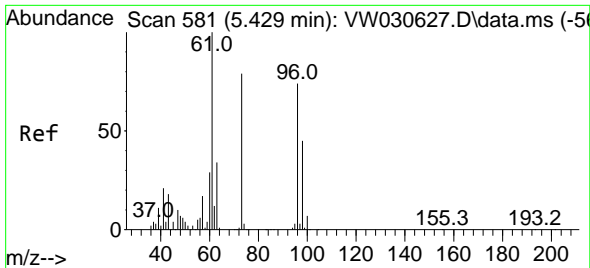
#17
 trans-1,2-Dichloroethene
 Concen: 30.758 ug/L
 RT: 5.429 min Scan# 581
 Delta R.T. -0.000 min
 Lab File: VW030630.D
 Acq: 17 Oct 2024 11:43



Tgt Ion: 96 Resp: 116310

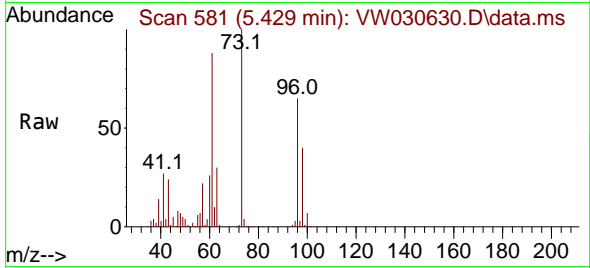
Ion	Ratio	Lower	Upper
96	100		
61	135.9	96.9	179.9
98	61.5	42.2	78.4





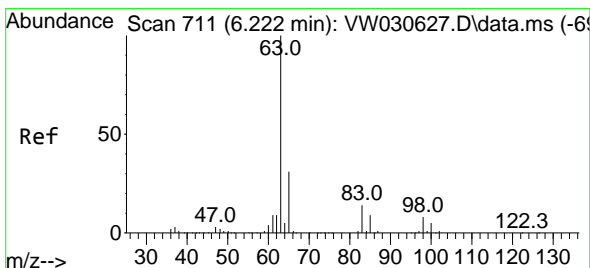
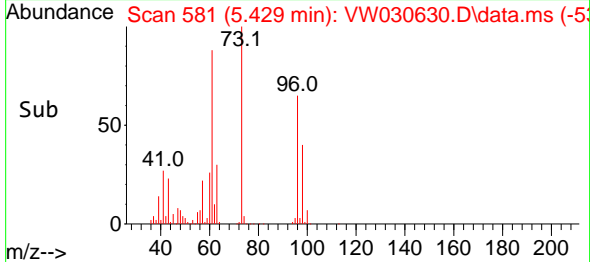
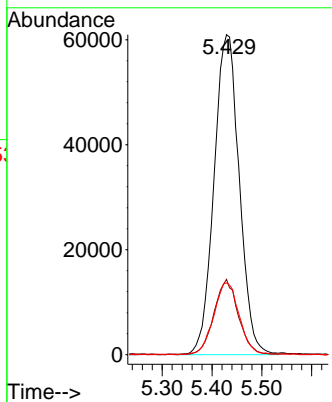
#18
 Methyl tert-butyl Ether
 Concen: 40.499 ug/L
 RT: 5.429 min Scan# 581
 Delta R.T. -0.000 min
 Lab File: VW030630.D
 Acq: 17 Oct 2024 11:43

Instrument : MSVOA_W
 ClientSampleId :

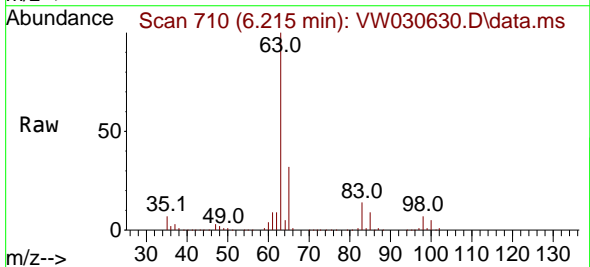


Tgt Ion: 73 Resp: 214332

Ion	Ratio	Lower	Upper
73	100		
43	22.2	18.1	27.1
57	22.5	17.7	26.5

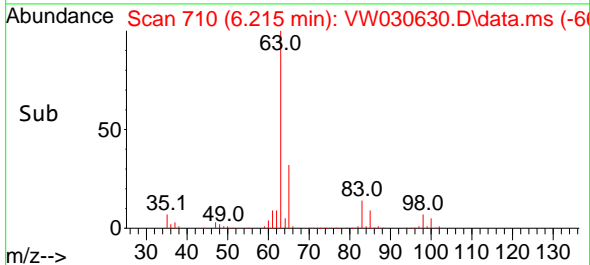
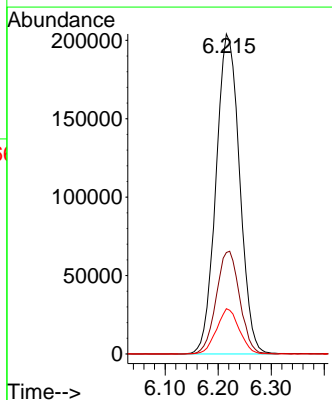


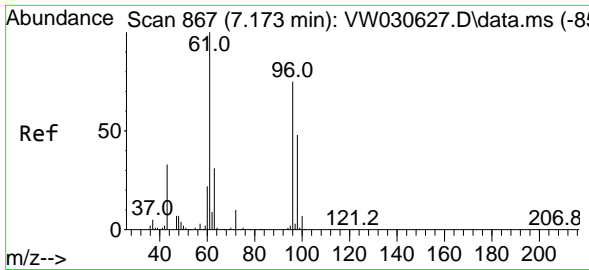
#19
 1,1-Dichloroethane
 Concen: 89.666 ug/L
 RT: 6.215 min Scan# 710
 Delta R.T. -0.006 min
 Lab File: VW030630.D
 Acq: 17 Oct 2024 11:43



Tgt Ion: 63 Resp: 630176

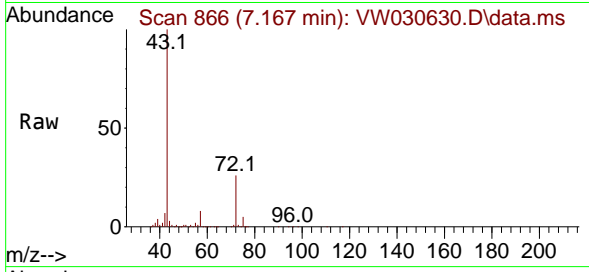
Ion	Ratio	Lower	Upper
63	100		
65	31.7	22.5	41.9
83	14.1	9.8	18.2



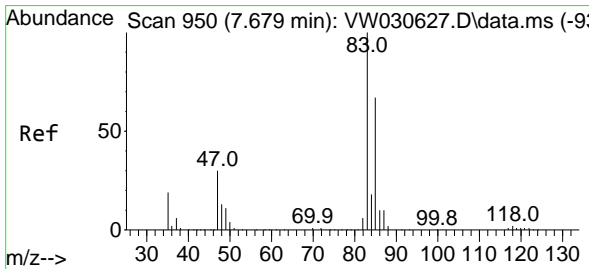
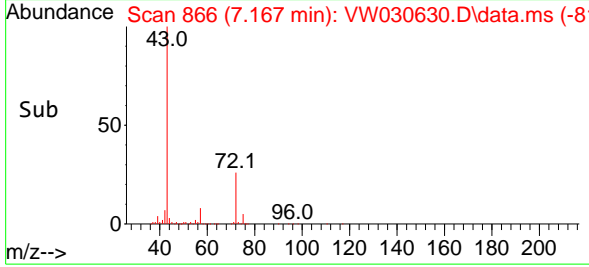
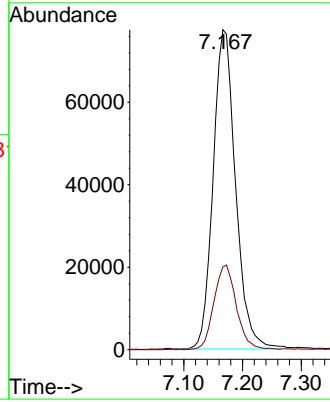


#22
 2-Butanone
 Concen: 176.246 ug/L
 RT: 7.167 min Scan# 80
 Delta R.T. -0.006 min
 Lab File: VW030630.D
 Acq: 17 Oct 2024 11:43

Instrument :
 MSVOA_W
 ClientSampleId :

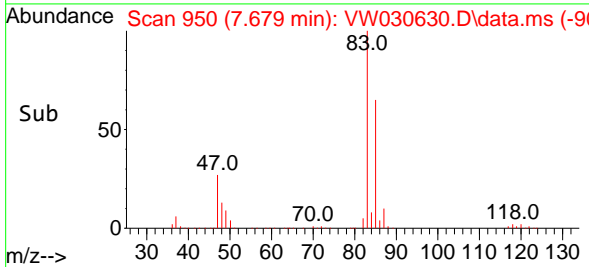
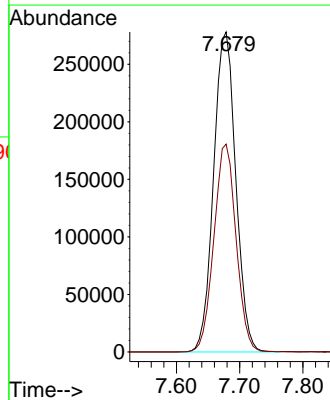
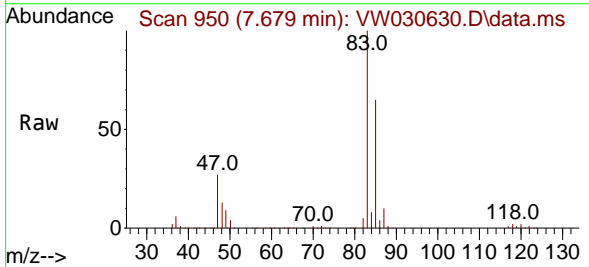


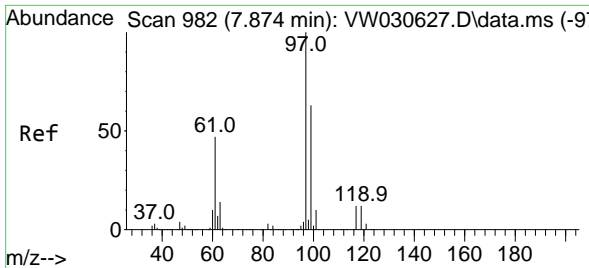
Tgt Ion: 43 Resp: 205503
 Ion Ratio Lower Upper
 43 100
 72 26.4 14.4 43.0



#25
 Chloroform
 Concen: 90.122 ug/L
 RT: 7.679 min Scan# 950
 Delta R.T. -0.000 min
 Lab File: VW030630.D
 Acq: 17 Oct 2024 11:43

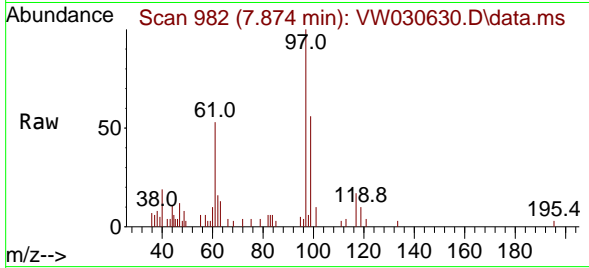
Tgt Ion: 83 Resp: 676858
 Ion Ratio Lower Upper
 83 100
 85 64.9 45.1 83.7





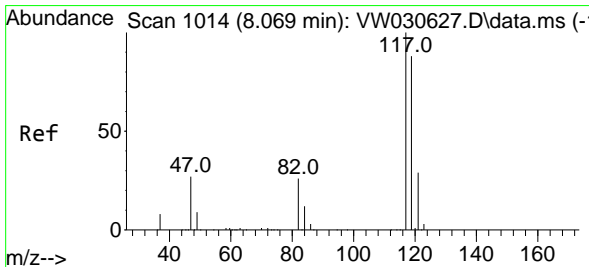
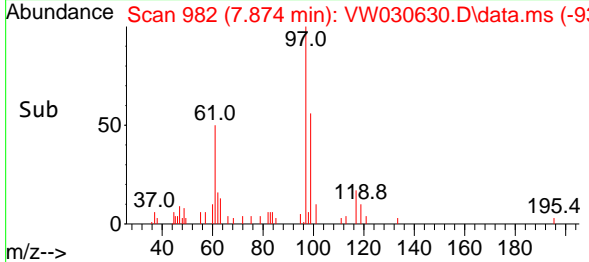
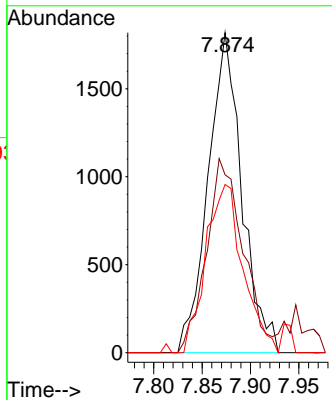
#30
 1,1,1-Trichloroethane
 Concen: 0.685 ug/L
 RT: 7.874 min Scan# 91
 Delta R.T. -0.000 min
 Lab File: VW030630.D
 Acq: 17 Oct 2024 11:43

Instrument : MSVOA_W
 ClientSampleId :



Tgt Ion: 97 Resp: 4405

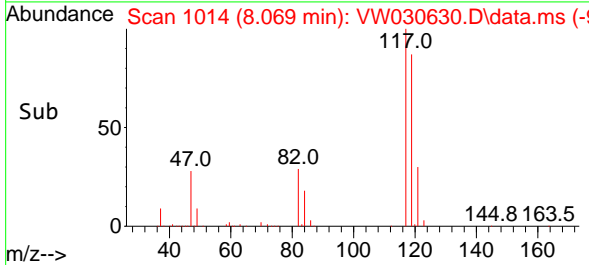
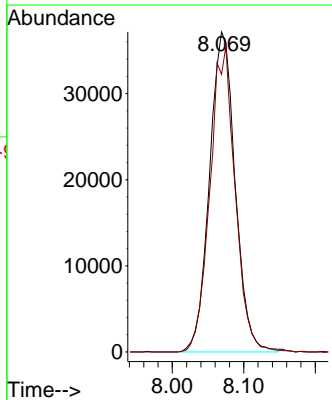
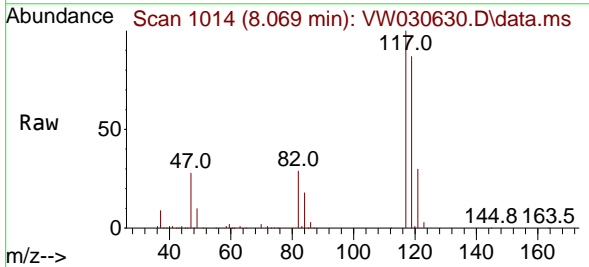
Ion	Ratio	Lower	Upper
97	100		
99	66.0	52.3	78.5
61	58.1	38.5	57.7

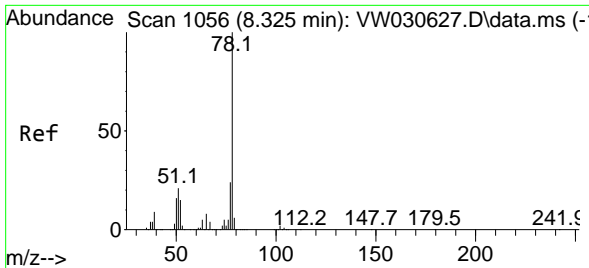


#31
 Carbon tetrachloride
 Concen: 16.144 ug/L
 RT: 8.069 min Scan# 1014
 Delta R.T. -0.000 min
 Lab File: VW030630.D
 Acq: 17 Oct 2024 11:43

Tgt Ion: 117 Resp: 92674

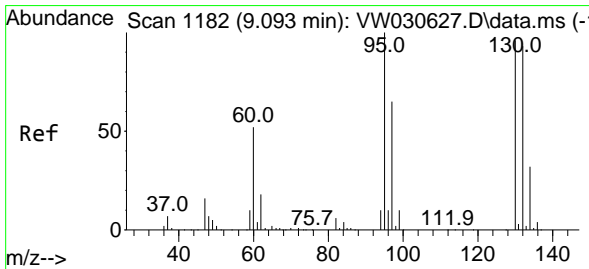
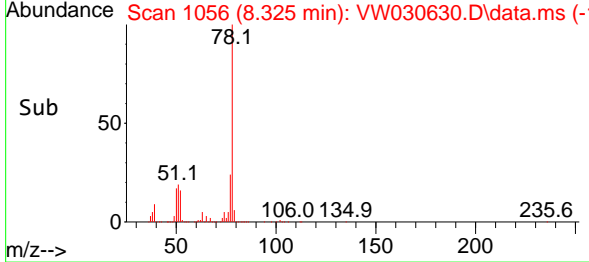
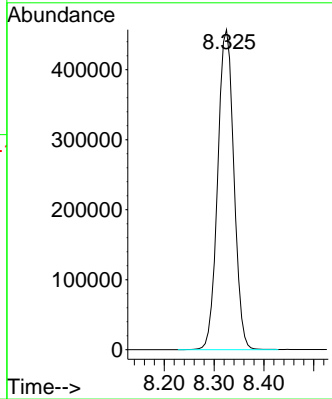
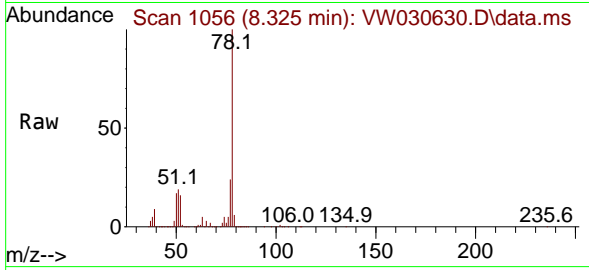
Ion	Ratio	Lower	Upper
117	100		
119	93.4	77.8	116.8





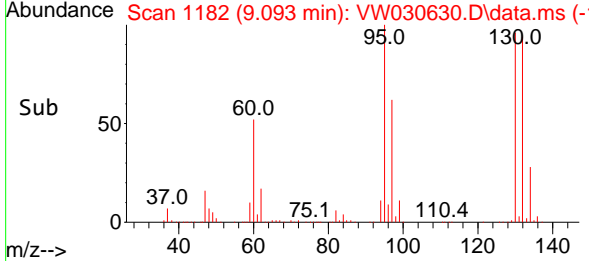
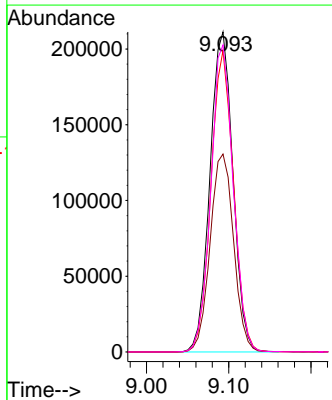
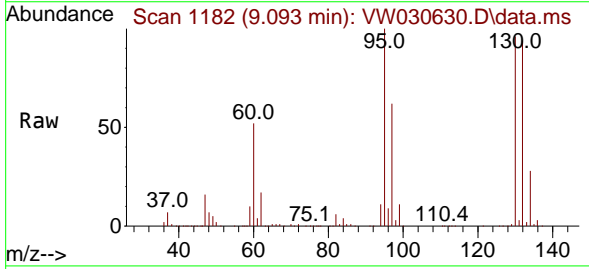
#33
 Benzene
 Concen: 65.362 ug/L
 RT: 8.325 min Scan# 1056
 Delta R.T. -0.000 min
 Lab File: VW030630.D
 Acq: 17 Oct 2024 11:43
 Tgt Ion: 78 Resp: 1029823

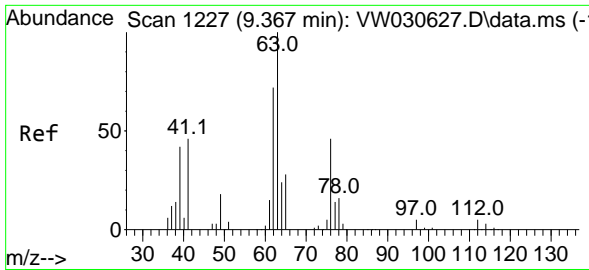
Instrument : MSVOA_W
 ClientSampleId :



#34
 Trichloroethene
 Concen: 93.650 ug/L
 RT: 9.093 min Scan# 1182
 Delta R.T. -0.000 min
 Lab File: VW030630.D
 Acq: 17 Oct 2024 11:43
 Tgt Ion: 95 Resp: 410496

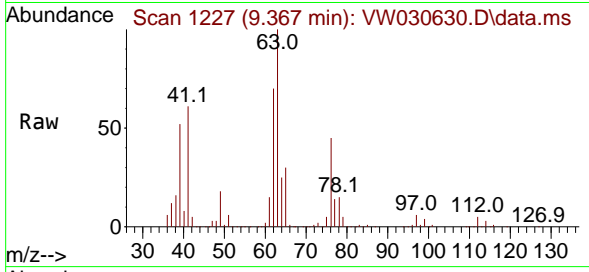
Ion	Ratio	Lower	Upper
95	100		
97	61.8	45.9	85.3
132	94.2	66.4	123.2
130	96.0	70.4	130.8



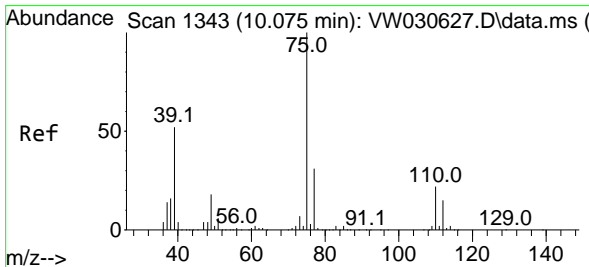
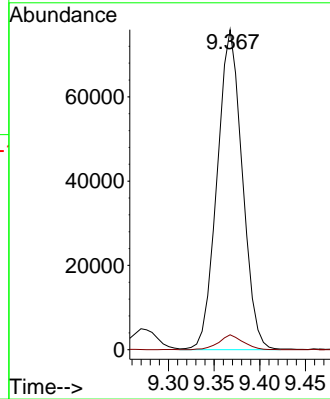
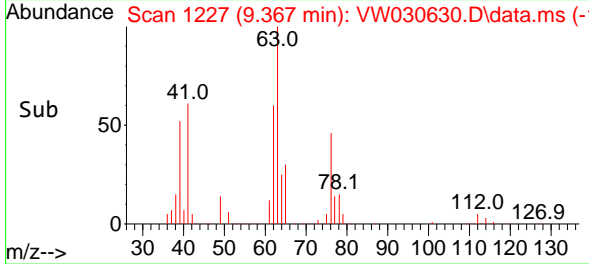


#37
 1,2-Dichloropropane
 Concen: 36.928 ug/L
 RT: 9.367 min Scan# 11
 Delta R.T. -0.000 min
 Lab File: VW030630.D
 Acq: 17 Oct 2024 11:43

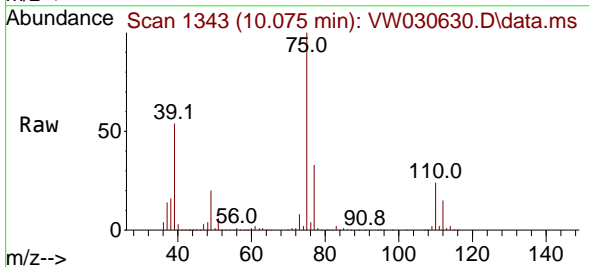
Instrument :
 MSVOA_W
 ClientSampleId :



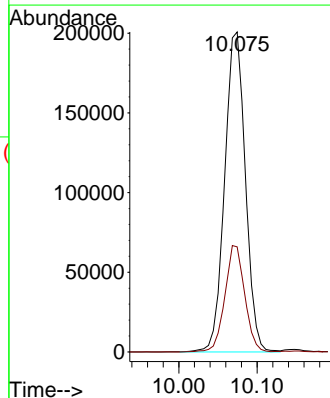
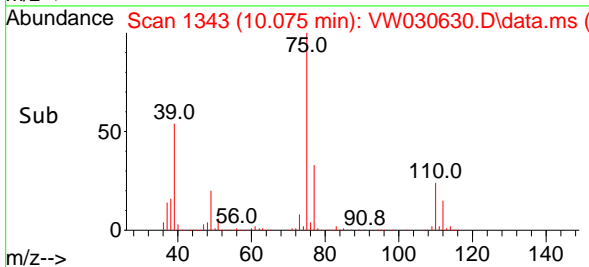
Tgt Ion: 63 Resp: 145315
 Ion Ratio Lower Upper
 63 100
 112 4.5 3.7 5.5

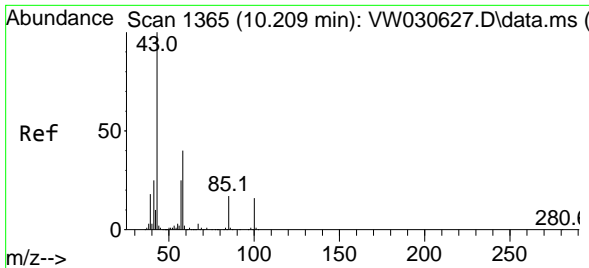


#39
 cis-1,3-Dichloropropene
 Concen: 62.217 ug/L
 RT: 10.075 min Scan# 1343
 Delta R.T. -0.000 min
 Lab File: VW030630.D
 Acq: 17 Oct 2024 11:43



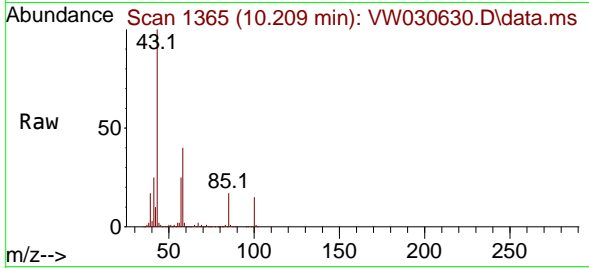
Tgt Ion: 75 Resp: 369288
 Ion Ratio Lower Upper
 75 100
 77 32.8 21.1 39.1





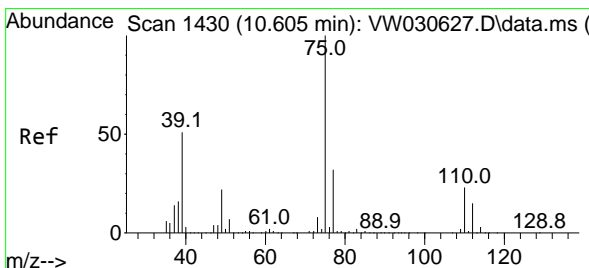
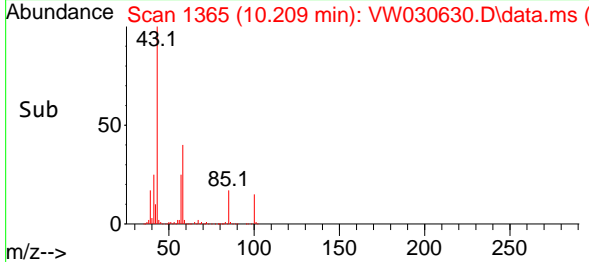
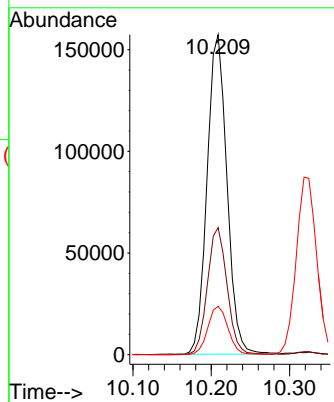
#40
 4-Methyl-2-pentanone
 Concen: 146.354 ug/L
 RT: 10.209 min Scan# 11
 Delta R.T. -0.000 min
 Lab File: VW030630.D
 Acq: 17 Oct 2024 11:43

Instrument :
 MSVOA_W
 ClientSampleId :



Tgt Ion: 43 Resp: 276671

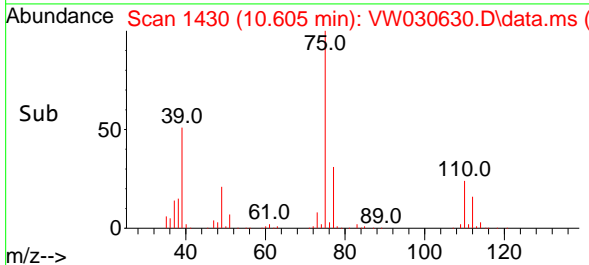
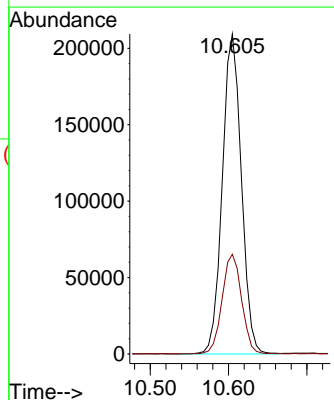
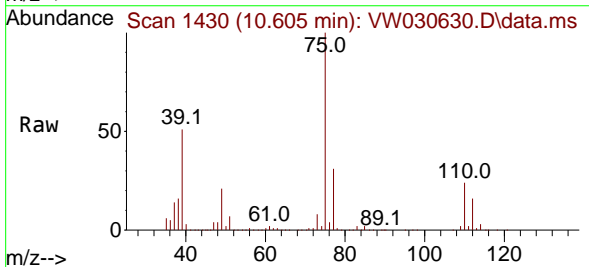
Ion	Ratio	Lower	Upper
43	100		
58	39.6	31.4	47.2
100	15.5	13.1	19.7

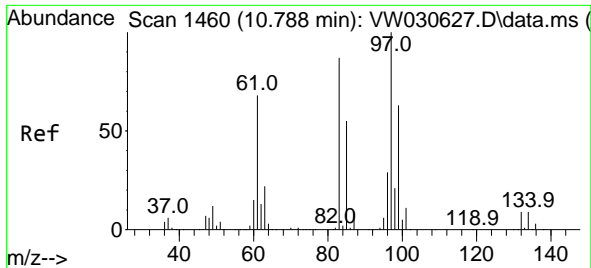


#44
 trans-1,3-Dichloropropene
 Concen: 70.934 ug/L
 RT: 10.605 min Scan# 1430
 Delta R.T. -0.000 min
 Lab File: VW030630.D
 Acq: 17 Oct 2024 11:43

Tgt Ion: 75 Resp: 353801

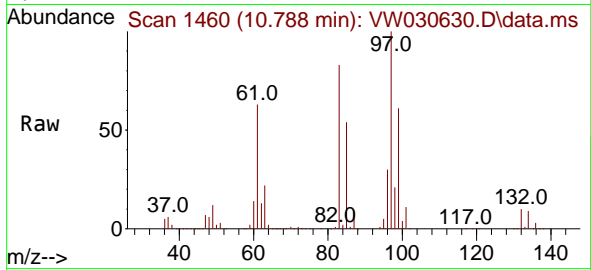
Ion	Ratio	Lower	Upper
75	100		
77	31.1	21.6	40.2





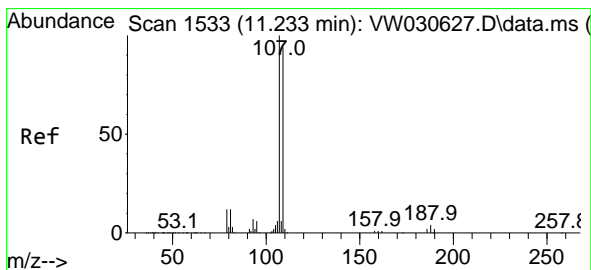
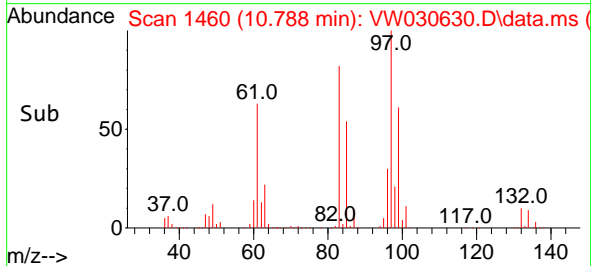
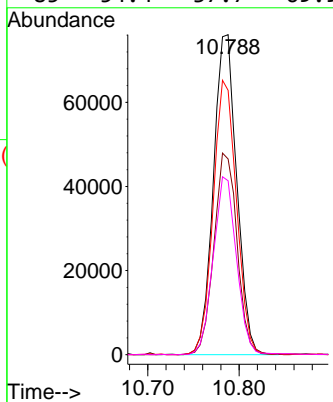
#45
 1,1,2-Trichloroethane
 Concen: 47.584 ug/L
 RT: 10.788 min Scan# 14
 Delta R.T. -0.000 min
 Lab File: VW030630.D
 Acq: 17 Oct 2024 11:43

Instrument :
 MSVOA_W
 ClientSampleId :



Tgt Ion: 97 Resp: 135326

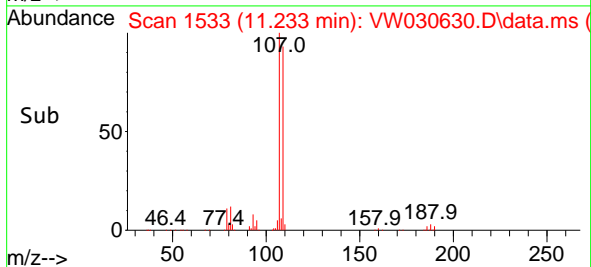
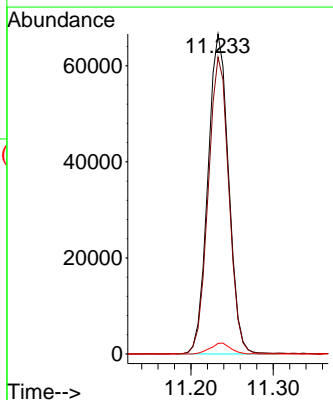
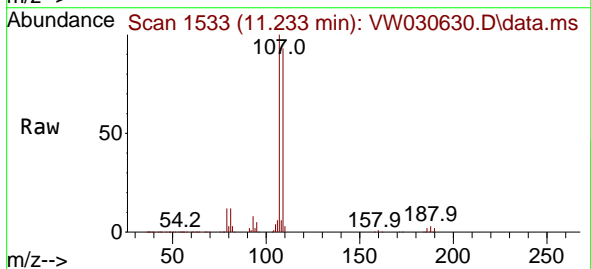
Ion	Ratio	Lower	Upper
97	100		
99	61.2	41.2	76.6
83	82.6	59.6	110.6
85	54.4	37.7	69.9

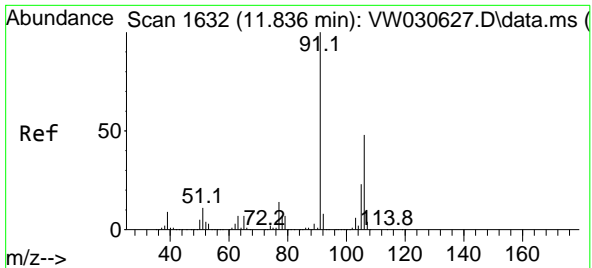


#50
 1,2-Dibromoethane
 Concen: 44.051 ug/L
 RT: 11.233 min Scan# 1533
 Delta R.T. -0.000 min
 Lab File: VW030630.D
 Acq: 17 Oct 2024 11:43

Tgt Ion: 107 Resp: 116899

Ion	Ratio	Lower	Upper
107	100		
109	92.8	63.8	118.6
188	3.3	2.6	3.8

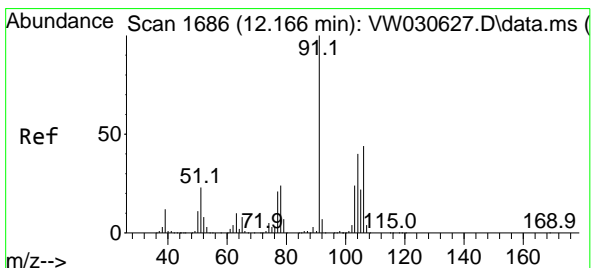
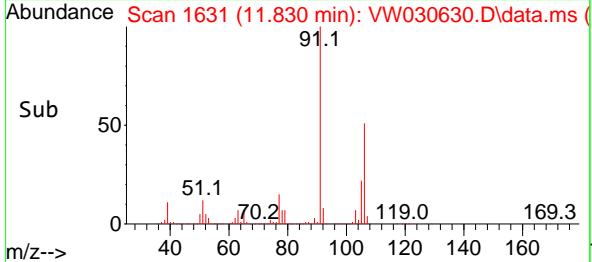
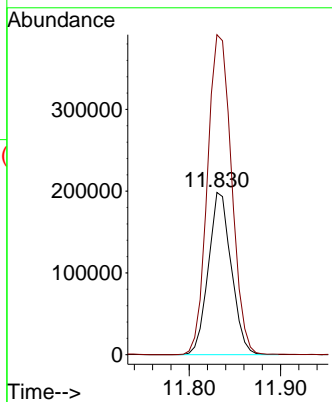
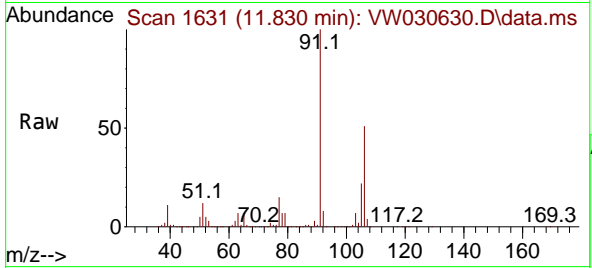




#53
 m,p-Xylene
 Concen: 47.979 ug/L
 RT: 11.830 min Scan# 1
 Delta R.T. -0.006 min
 Lab File: VW030630.D
 Acq: 17 Oct 2024 11:43

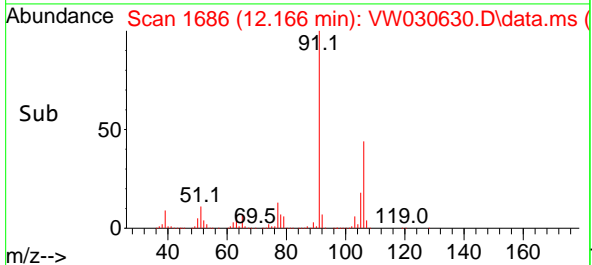
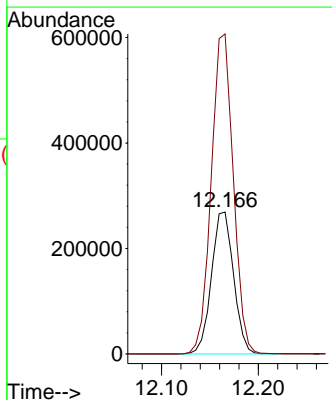
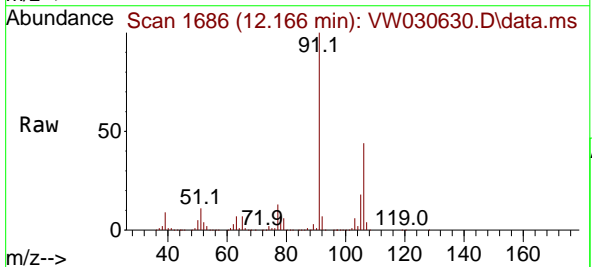
Instrument :
 MSVOA_W
 ClientSampleId :

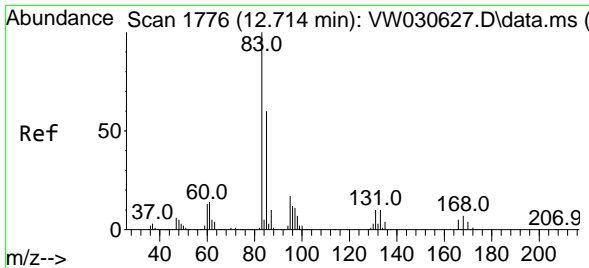
Tgt Ion:106 Resp: 344763
 Ion Ratio Lower Upper
 106 100
 91 197.2 140.6 261.2



#54
 o-Xylene
 Concen: 64.366 ug/L
 RT: 12.166 min Scan# 1686
 Delta R.T. -0.000 min
 Lab File: VW030630.D
 Acq: 17 Oct 2024 11:43

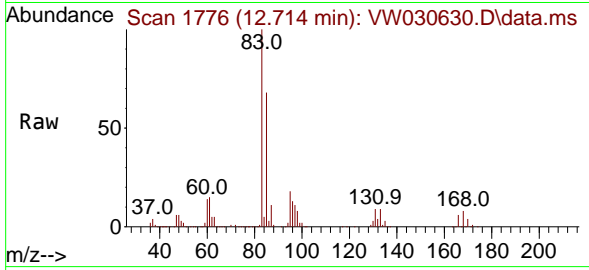
Tgt Ion:106 Resp: 427595
 Ion Ratio Lower Upper
 106 100
 91 225.6 144.5 268.4





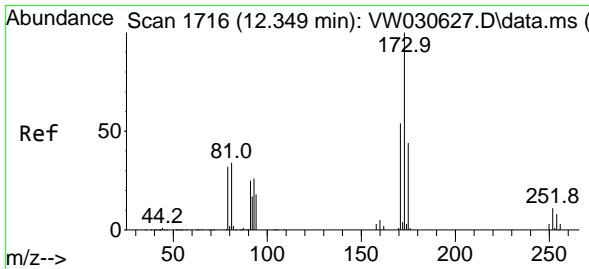
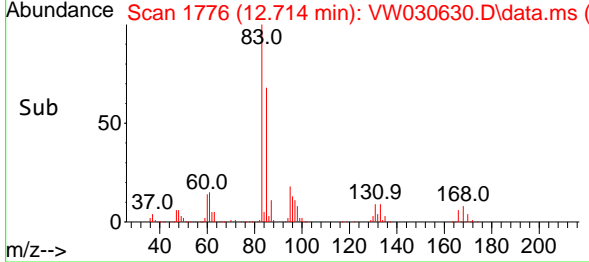
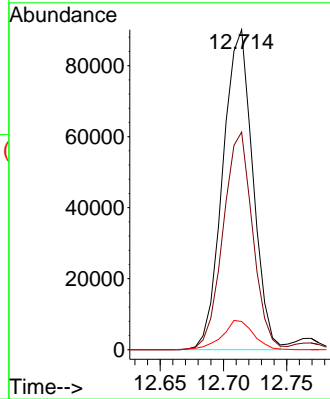
#57
 1,1,2,2-Tetrachloroethane
 Concen: 46.350 ug/L
 RT: 12.714 min Scan# 1776
 Delta R.T. -0.000 min
 Lab File: VW030630.D
 Acq: 17 Oct 2024 11:43

Instrument : MSVOA_W
 ClientSampleId :



Tgt Ion: 83 Resp: 148651

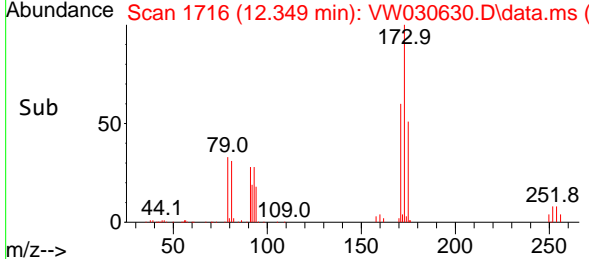
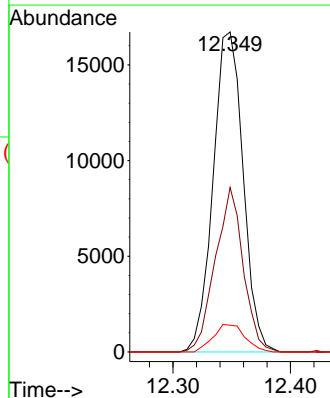
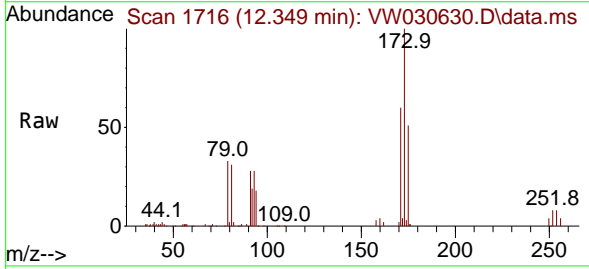
Ion	Ratio	Lower	Upper
83	100		
85	68.0	42.6	79.2
131	8.8	7.4	11.0

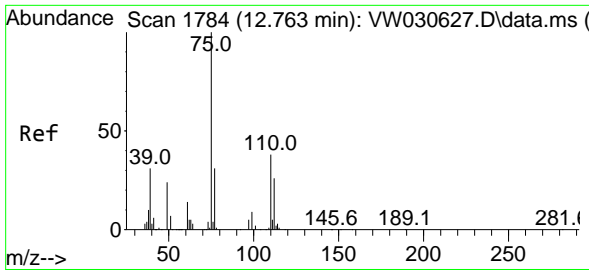


#59
 Bromoform
 Concen: 18.022 ug/L
 RT: 12.349 min Scan# 1716
 Delta R.T. -0.000 min
 Lab File: VW030630.D
 Acq: 17 Oct 2024 11:43

Tgt Ion: 173 Resp: 29651

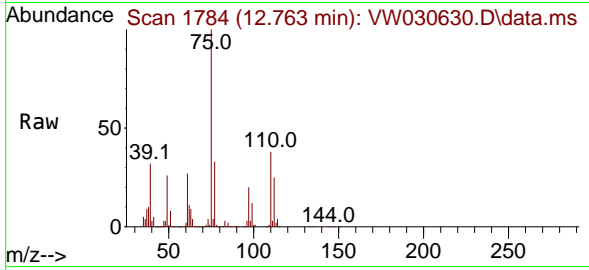
Ion	Ratio	Lower	Upper
173	100		
175	47.9	39.0	58.4
254	9.1	7.7	11.5





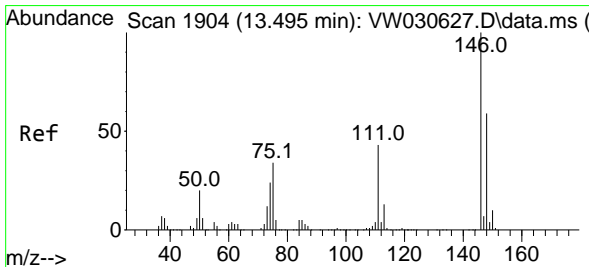
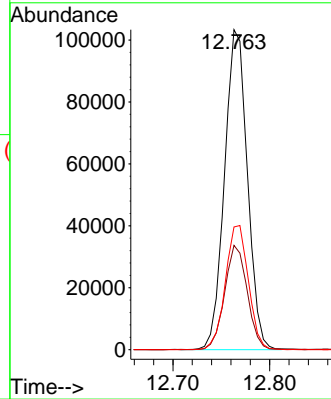
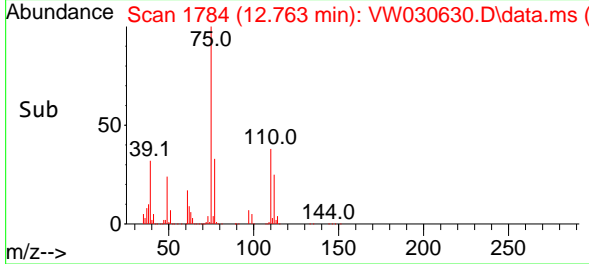
#61
 1,2,3-Trichloropropane
 Concen: 74.393 ug/L
 RT: 12.763 min Scan# 11
 Delta R.T. -0.000 min
 Lab File: VW030630.D
 Acq: 17 Oct 2024 11:43

Instrument :
 MSVOA_W
 ClientSampled :

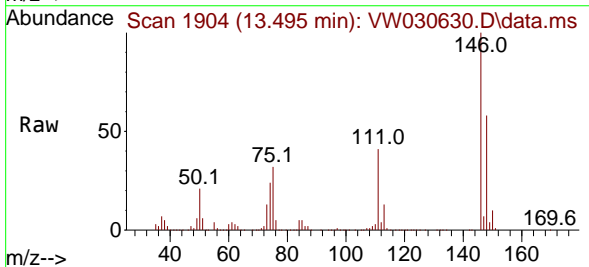


Tgt Ion: 75 Resp: 169515

Ion	Ratio	Lower	Upper
75	100		
77	32.1	25.7	38.5
110	39.1	32.3	48.5

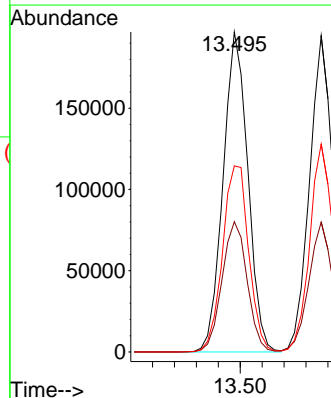
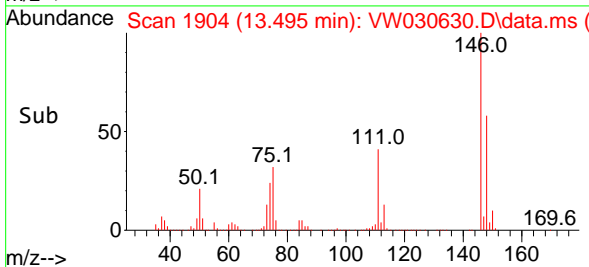


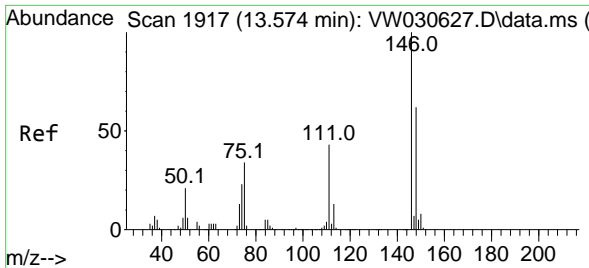
#64
 1,3-Dichlorobenzene
 Concen: 39.102 ug/L
 RT: 13.495 min Scan# 1904
 Delta R.T. -0.000 min
 Lab File: VW030630.D
 Acq: 17 Oct 2024 11:43



Tgt Ion: 146 Resp: 308653

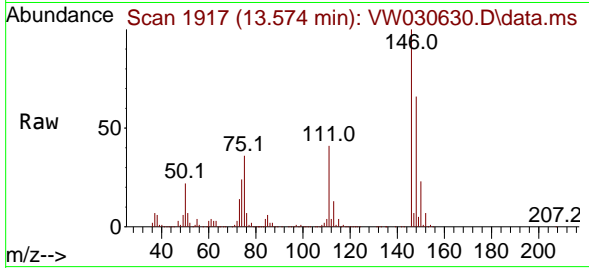
Ion	Ratio	Lower	Upper
146	100		
111	40.7	31.2	58.0
148	58.1	45.7	84.9



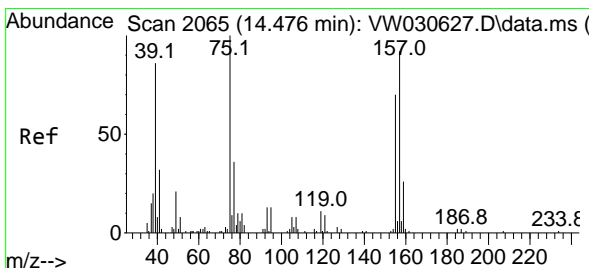
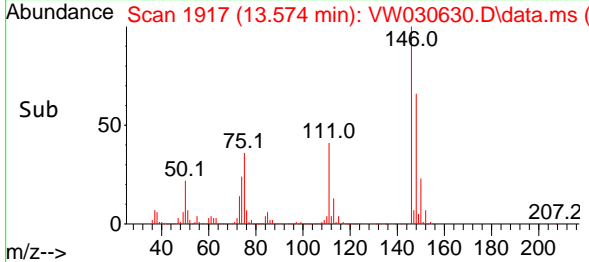
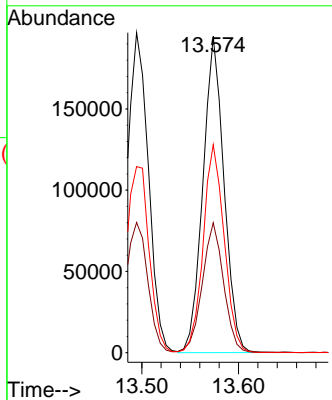


#65
 1,4-Dichlorobenzene
 Concen: 36.228 ug/L
 RT: 13.574 min Scan# 1917
 Delta R.T. -0.000 min
 Lab File: VW030630.D
 Acq: 17 Oct 2024 11:43

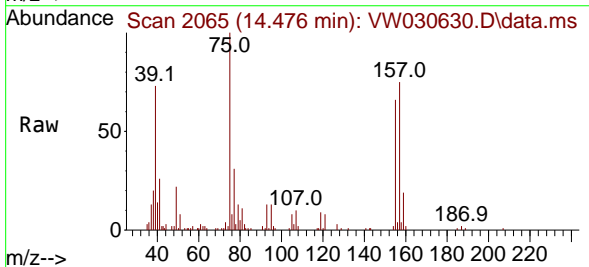
Instrument :
 MSVOA_W
 ClientSampleId :



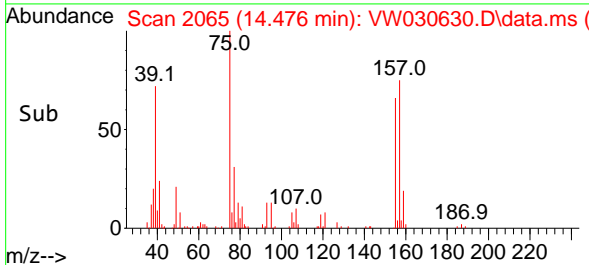
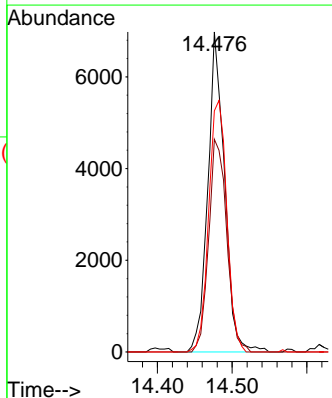
Tgt Ion:146 Resp: 295273
 Ion Ratio Lower Upper
 146 100
 111 41.1 26.8 49.8
 148 65.7 41.0 76.2

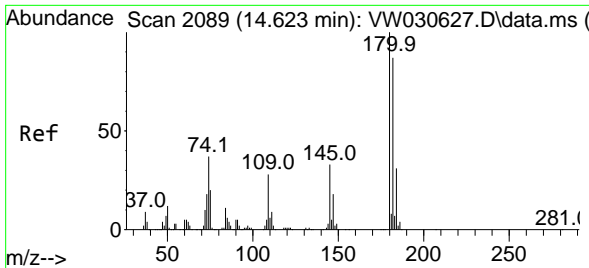


#68
 1,2-Dibromo-3-chloropropane
 Concen: 21.379 ug/L
 RT: 14.476 min Scan# 2065
 Delta R.T. -0.000 min
 Lab File: VW030630.D
 Acq: 17 Oct 2024 11:43



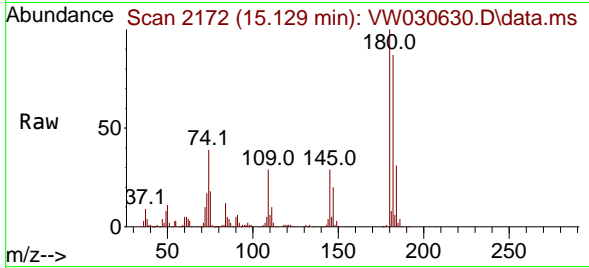
Tgt Ion: 75 Resp: 10862
 Ion Ratio Lower Upper
 75 100
 155 66.5 57.9 86.9
 157 75.4 69.0 103.6



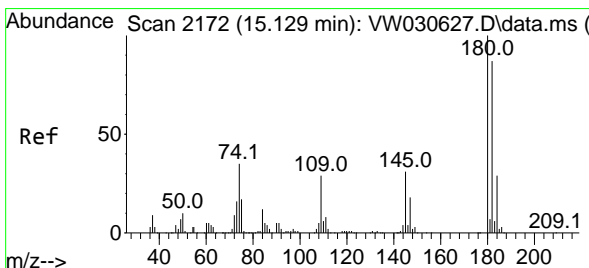
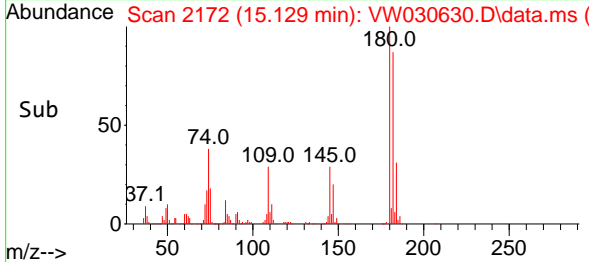
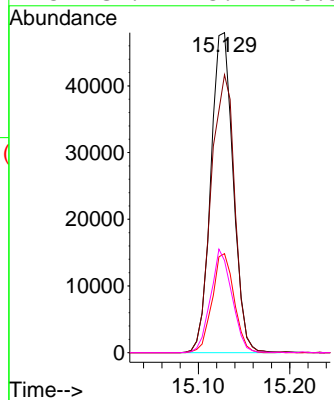


#69
 1,3,5-Trichlorobenzene
 Concen: 15.630 ug/L
 RT: 15.129 min Scan# 2112
 Delta R.T. 0.506 min
 Lab File: VW030630.D
 Acq: 17 Oct 2024 11:43

Instrument : MSVOA_W
 ClientSampled :

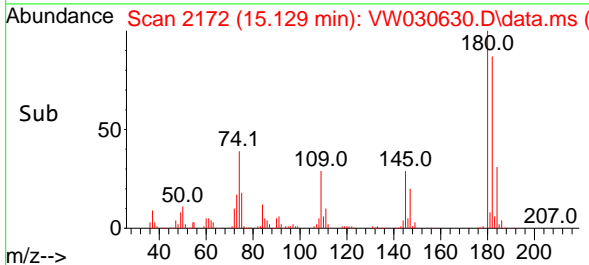
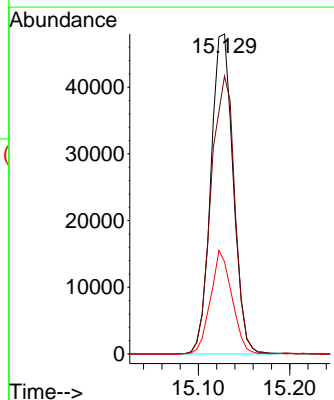
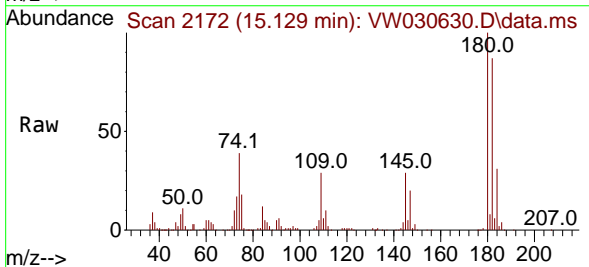


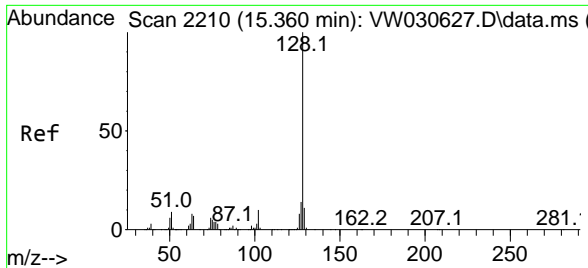
Tgt Ion:180 Resp: 81356
 Ion Ratio Lower Upper
 180 100
 182 91.8 79.9 119.9
 184 30.5 25.2 37.8
 145 31.1 25.7 38.5



#70
 1,2,4-trichlorobenzene
 Concen: 19.415 ug/L
 RT: 15.129 min Scan# 2172
 Delta R.T. -0.000 min
 Lab File: VW030630.D
 Acq: 17 Oct 2024 11:43

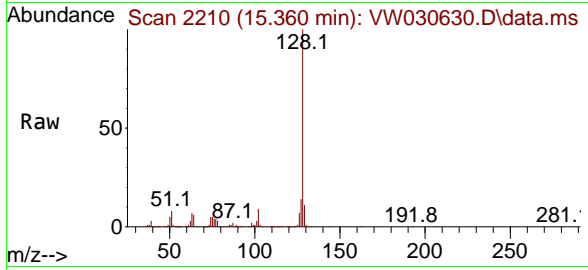
Tgt Ion:180 Resp: 81356
 Ion Ratio Lower Upper
 180 100
 182 91.8 75.2 112.8
 145 31.1 25.4 38.2





#71
 Naphthalene
 Concen: 75.743 ug/L
 RT: 15.360 min Scan# 21
 Delta R.T. -0.000 min
 Lab File: VW030630.D
 Acq: 17 Oct 2024 11:43

Instrument :
 MSVOA_W
 ClientSampleId :



Tgt Ion:128 Resp: 548348

Ion	Ratio	Lower	Upper
128	100		
127	13.6	10.9	16.3
129	11.1	8.8	13.2

