

Data File : VW013616.D
 Acq On : 18 Oct 2019 10:50
 Operator : SY/VA
 Sample : VSTD02523
 Misc : 5.00G/10ML/MSVOA_W/SOIL
 ALS Vial : 1 Sample Multiplier: 1

Instrument :
 MSVOA_W
 ClientSampleId :
 VSTD02505

Quant Time: Oct 18 11:37:07 2019
 Quant Method : Z:\VOASRV\HPCHEM1\MSVOA_W\METHOD\SOM2WLM101819S.M
 Quant Title : VOC Analysis
 QLast Update : Fri Oct 18 10:06:24 2019
 Response via : Initial Calibration

Internal Standards	R.T.	QIon	Response	Conc	Units	Dev(Min)
1) 1,4-Difluorobenzene	8.84	114	334384	25.00	ug/L	0.00
28) Chlorobenzene-d5	11.63	117	323357	25.00	ug/L	0.00
60) 1,4-Dichlorobenzene-d4	13.56	152	190100	25.00	ug/L	0.00

System Monitoring Compounds

4) Vinyl Chloride-d3	2.35	65	97526	25.49	ug/L	0.00
7) Chloroethane-d5	2.89	69	86268	29.36	ug/L	0.00
10) 1,1-Dichloroethene-d2	4.03	63	209821	26.42	ug/L	0.00
20) 2-Butanone-d5	7.08	46	69144	59.98	ug/L	0.00
24) Chloroform-d	7.65	84	213839	29.44	ug/L	0.00
26) 1,2-Dichloroethane-d4	8.31	65	112525	29.90	ug/L	0.00
29) Benzene-d6	8.27	84	440421	25.43	ug/L	0.00
33) 1,2-Dichloropropane-d6	9.27	67	134254	26.12	ug/L	0.00
37) Toluene-d8	10.32	98	405818	24.68	ug/L	0.00
38) trans-1,3-Dichloropropene-	10.57	79	59729	26.09	ug/L	0.00
39) 2-Hexanone-d5	10.92	63	52987	51.55	ug/L	0.00
48) 1,1,2,2-Tetrachloroethane-	12.69	84	109990	26.70	ug/L	0.00
61) 1,2-Dichlorobenzene-d4	13.85	152	152461	22.32	ug/L	0.00

Target Compounds

						Qvalue
2) Dichlorodifluoromethane	2.01	85	88859	48.768	ug/L	99
3) Chloromethane	2.21	50	92196	28.798	ug/L	98
5) Vinyl chloride	2.37	62	127945	28.248	ug/L	100
6) Bromomethane	2.78	94	87674	31.602	ug/L	98
8) Chloroethane	2.93	64	80944	31.860	ug/L	98
9) Trichlorofluoromethane	3.26	101	78545	33.264	ug/L	99
11) 1,1,2-Trichloro-1,2,2-trif	4.07	101	131732	31.435	ug/L	100
12) 1,1-Dichloroethene	4.04	96	132759	31.628	ug/L	92
13) Acetone	4.13	43	64977	49.043	ug/L	98
14) Carbon disulfide	4.39	76	386167	30.147	ug/L	100
15) Methyl Acetate	4.67	43	65023	31.462	ug/L	99
16) Methylene chloride	4.92	84	141253	27.889	ug/L	97
17) Methyl tert-butyl Ether	5.42	73	176417	26.154	ug/L	99
18) trans-1,2-Dichloroethene	5.43	96	143677	32.076	ug/L	94
19) 1,1-Dichloroethane	6.21	63	242095	32.192	ug/L	98
21) 2-Butanone	7.17	43	93564	57.726	ug/L	99
22) cis-1,2-Dichloroethene	7.17	96	154082	32.163	ug/L	99
23) Bromochloromethane	7.51	128	68894	32.117	ug/L	97
25) Chloroform	7.68	83	240591	32.429	ug/L	100
27) 1,2-Dichloroethane	8.40	62	154500	32.926	ug/L	98
30) Cyclohexane	7.95	56	236882	27.861	ug/L	99
31) 1,1,1-Trichloroethane	7.87	97	182349	27.999	ug/L	100
32) Carbon tetrachloride	8.07	117	180143	28.836	ug/L	100
34) Benzene	8.32	78	573451	29.355	ug/L	100
35) Trichloroethene	9.09	95	146367	28.724	ug/L	99
36) Methylcyclohexane	9.34	83	264230	28.515	ug/L	100
40) 1,2-Dichloropropane	9.37	63	137133	29.140	ug/L	100
41) Bromodichloromethane	9.64	83	172354	29.818	ug/L	99
42) cis-1,3-Dichloropropene	10.07	75	222083	29.416	ug/L	98
43) 4-Methyl-2-pentanone	10.21	43	182014	55.433	ug/L	99

Data File : VW013616.D
 Acq On : 18 Oct 2019 10:50
 Operator : SY/VA
 Sample : VSTD02523
 Misc : 5.00G/10ML/MSVOA_W/SOIL
 ALS Vial : 1 Sample Multiplier: 1

Instrument :
 MSVOA_W
 ClientSampleId :
 VSTD02505

Quant Time: Oct 18 11:37:07 2019
 Quant Method : Z:\VOASRV\HPCHEM1\MSVOA_W\METHOD\SOM2WLM101819S.M
 Quant Title : VOC Analysis
 QLast Update : Fri Oct 18 10:06:24 2019
 Response via : Initial Calibration

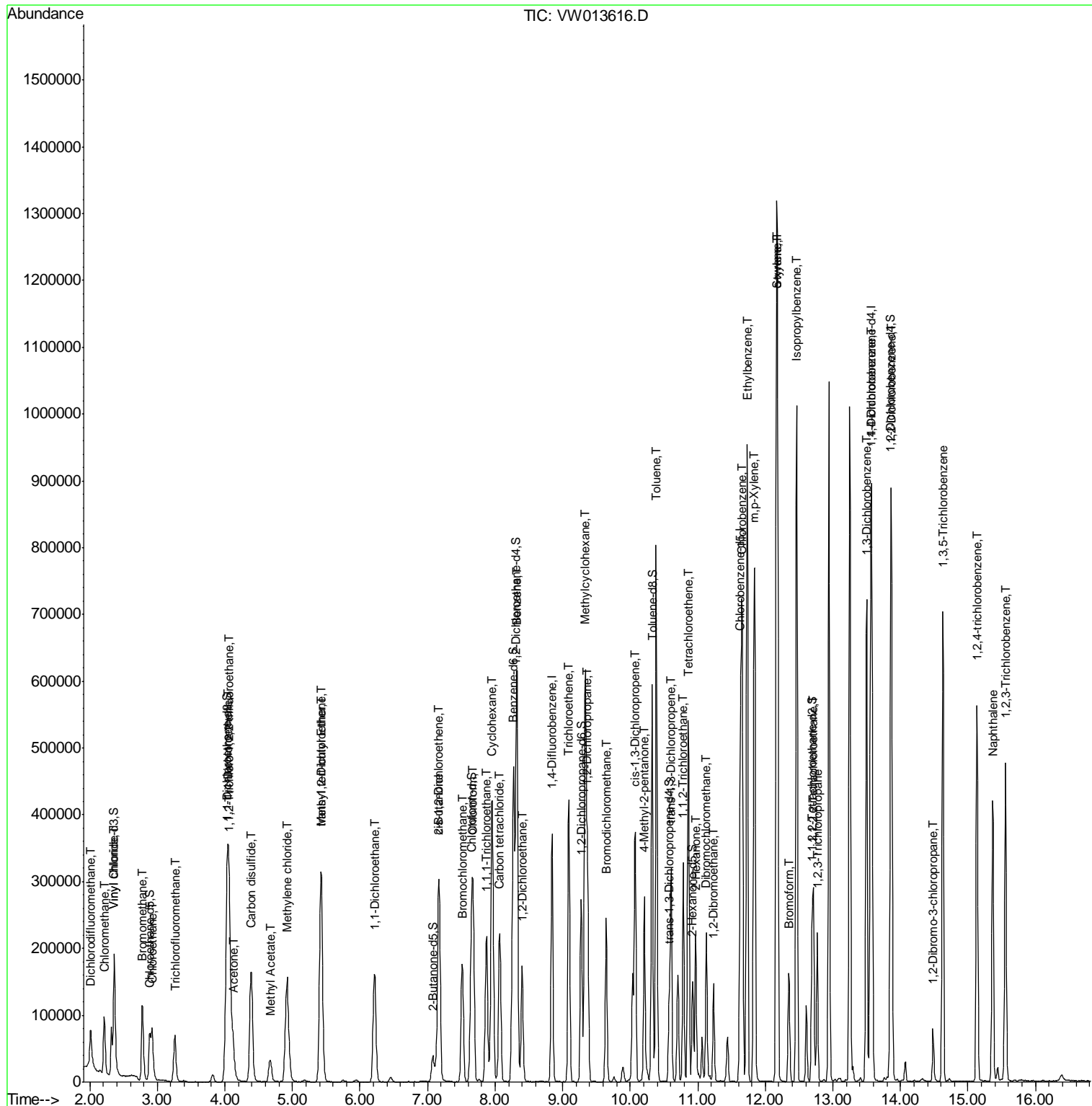
Internal Standards	R.T.	QIon	Response	Conc	Units	Dev(Min)
44) Toluene	10.39	91	613193	28.964	ug/L	96
45) trans-1,3-Dichloropropene	10.60	75	178564	29.953	ug/L	98
46) 1,1,2-Trichloroethane	10.79	97	105280	29.471	ug/L	98
47) Tetrachloroethene	10.86	164	132653	28.564	ug/L	97
49) 2-Hexanone	10.97	43	139506	58.459	ug/L	99
50) Dibromochloromethane	11.13	129	126127	29.987	ug/L	95
51) 1,2-Dibromoethane	11.23	107	102843	29.307	ug/L	98
52) Chlorobenzene	11.66	112	386782	28.786	ug/L	99
53) Ethylbenzene	11.73	91	678763	28.964	ug/L	98
54) m,p-Xylene	11.83	106	265728	29.067	ug/L	98
55) o-xylene	12.16	106	250260	29.327	ug/L	97
56) Styrene	12.18	104	430787	29.642	ug/L	98
57) Isopropylbenzene	12.46	105	671006	28.986	ug/L	99
58) 1,1,2,2-Tetrachloroethane	12.71	83	126167	29.893	ug/L	99
59) 1,2,3-Trichloropropane	12.77	75	92386	29.315	ug/L	98
62) Bromoform	12.35	173	80396	26.294	ug/L	100
63) 1,3-Dichlorobenzene	13.50	146	314886	24.719	ug/L	96
64) 1,4-Dichlorobenzene	13.58	146	316134	24.931	ug/L	98
65) 1,2-Dichlorobenzene	13.87	146	286001	24.970	ug/L	97
66) 1,2-Dibromo-3-chloropropan	14.48	75	19401	24.536	ug/L	94
67) 1,3,5-Trichlorobenzene	14.63	180	242374	25.209	ug/L	99
68) 1,2,4-trichlorobenzene	15.13	180	203347	25.517	ug/L	98
69) Naphthalene	15.36	128	377164	25.985	ug/L	100
70) 1,2,3-Trichlorobenzene	15.55	180	182660	25.741	ug/L	98

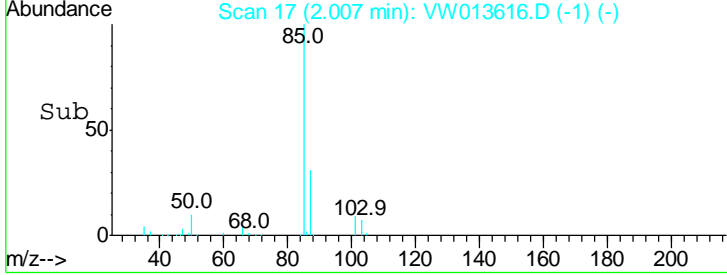
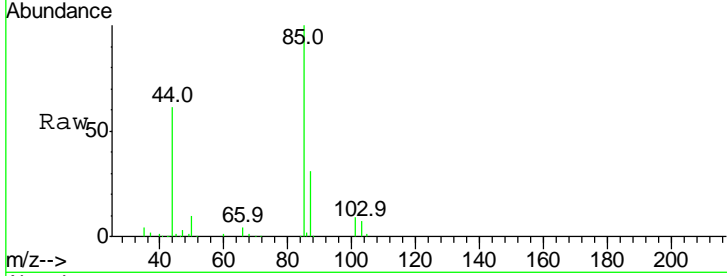
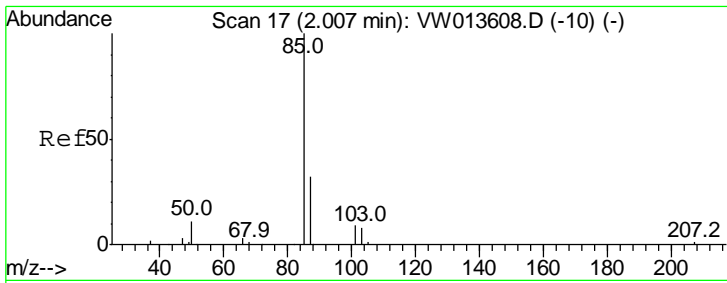
(#) = qualifier out of range (m) = manual integration (+) = signals summed

Data File : VW013616.D
Acq On : 18 Oct 2019 10:50
Operator : SY/VA
Sample : VSTD02523
Misc : 5.00G/10ML/MSVOA_W/SOIL
ALS Vial : 1 Sample Multiplier: 1

Instrument :
MSVOA_W
Client Sampled :
VSTD02505

Quant Time: Oct 18 11:37:07 2019
Quant Method : Z:\VOASRV\HPCHEM1\MSVOA_W\METHOD\SOM2WLM101819S.M
Quant Title : VOC Analysis
QLast Update : Fri Oct 18 10:06:24 2019
Response via : Initial Calibration

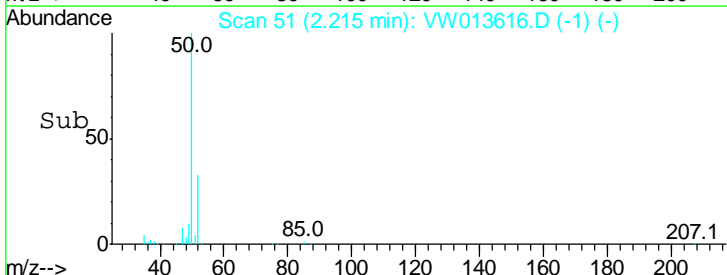
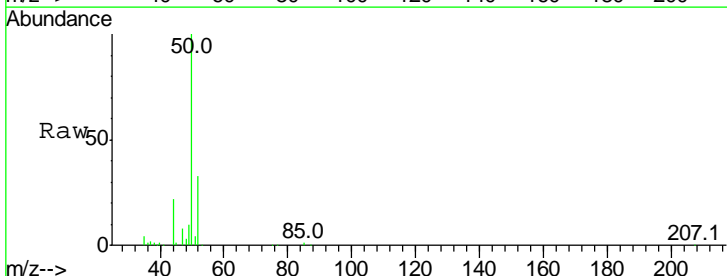
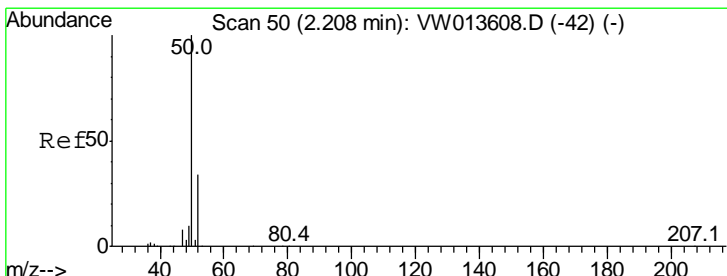
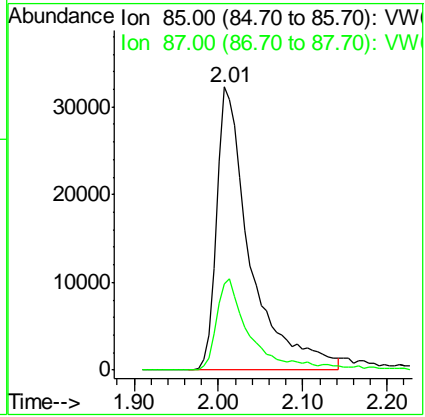




#2
 Dichlorodifluoromethane
 Concen: 48.768 ug/L
 RT: 2.01 min Scan# 17
 Delta R.T. -0.00 min
 Lab File: VW013616.D
 Acq: 18 Oct 2019 10:50

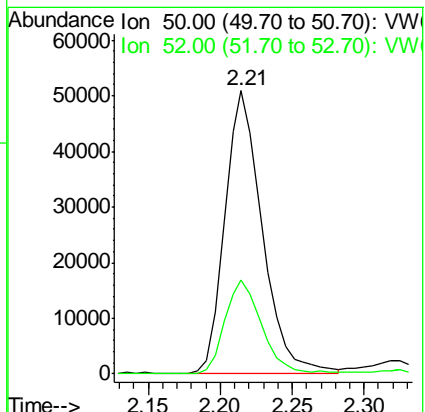
Instrument :
 MSVOA_W
 ClientSampled :
 VSTD02505

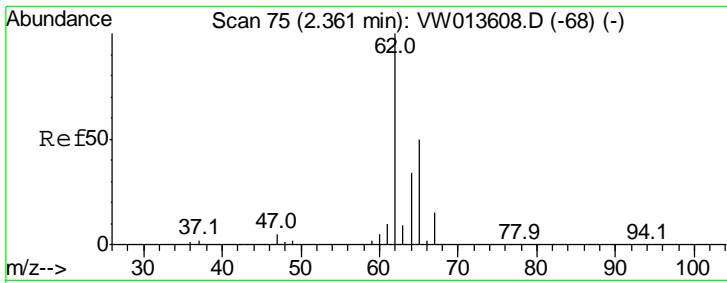
Tgt Ion	Resp	Lower	Upper
85	100		
87	28.8	20.4	38.0



#3
 Chloromethane
 Concen: 28.798 ug/L
 RT: 2.21 min Scan# 51
 Delta R.T. 0.01 min
 Lab File: VW013616.D
 Acq: 18 Oct 2019 10:50

Tgt Ion	Resp	Lower	Upper
50	100		
52	33.3	22.6	42.0

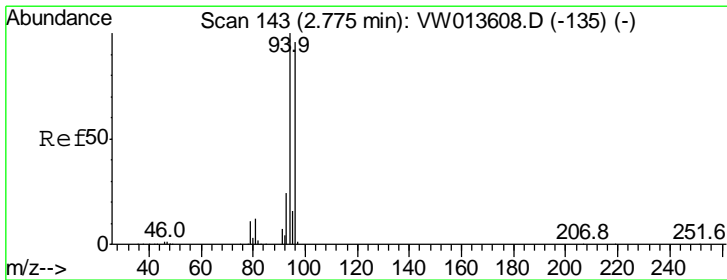
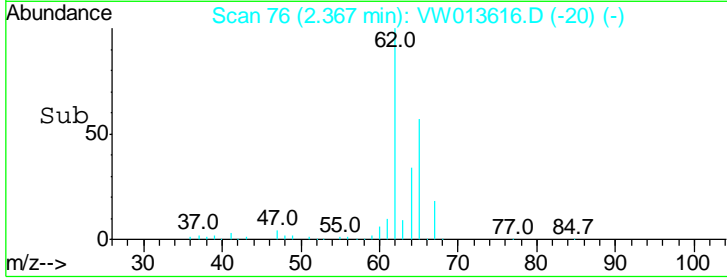
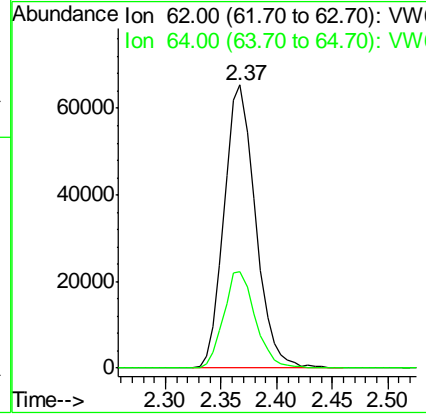
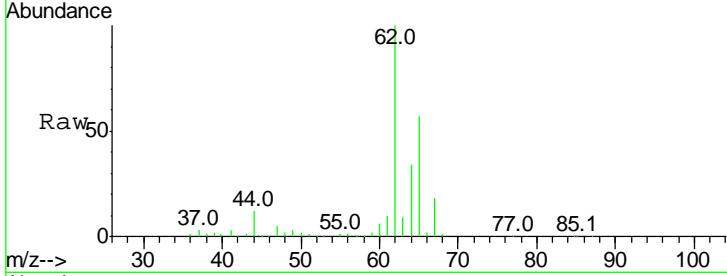




#5
 Vinyl chloride
 Concen: 28.248 ug/L
 RT: 2.37 min Scan# 76
 Delta R.T. 0.01 min
 Lab File: VW013616.D
 Acq: 18 Oct 2019 10:50

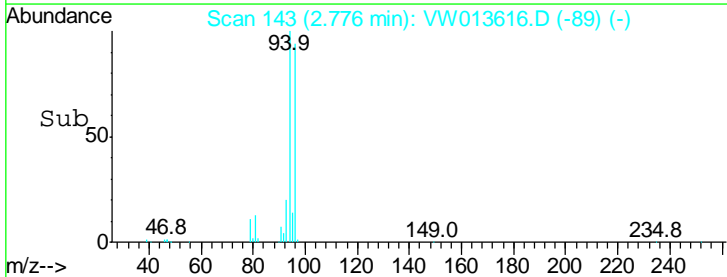
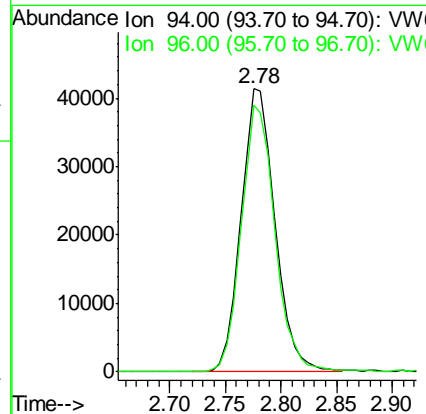
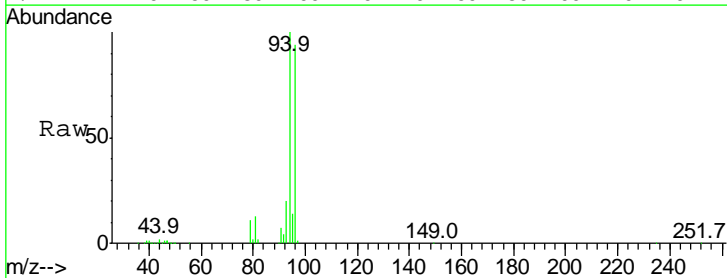
Instrument :
 MSVOA_W
ClientSampled :
 VSTD02505

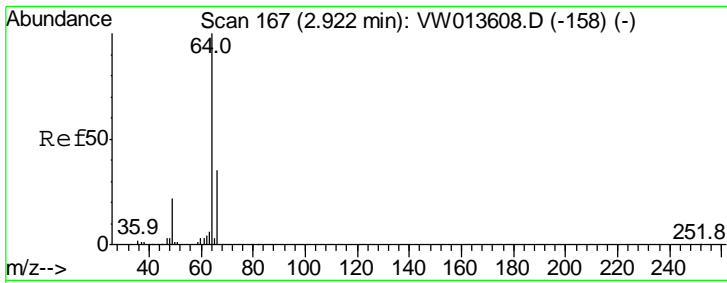
Tgt Ion: 62 Resp: 127945
 Ion Ratio Lower Upper
 62 100
 64 34.2 23.9 44.3



#6
 Bromomethane
 Concen: 31.602 ug/L
 RT: 2.78 min Scan# 143
 Delta R.T. -0.00 min
 Lab File: VW013616.D
 Acq: 18 Oct 2019 10:50

Tgt Ion: 94 Resp: 87674
 Ion Ratio Lower Upper
 94 100
 96 93.1 9.5 179.9

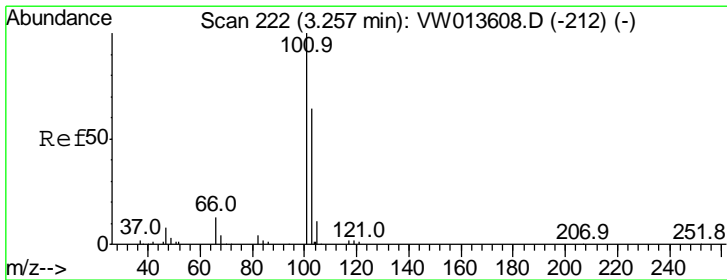
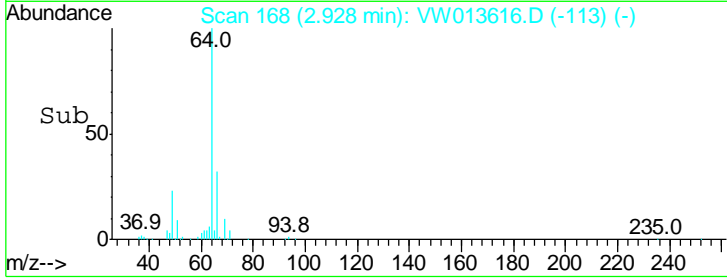
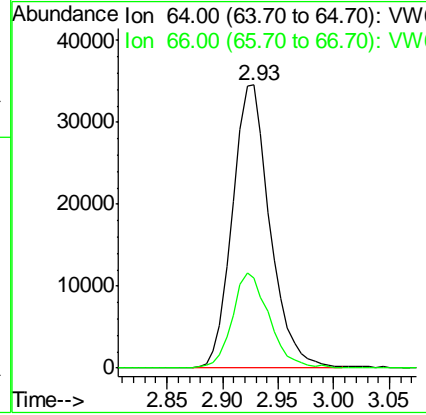
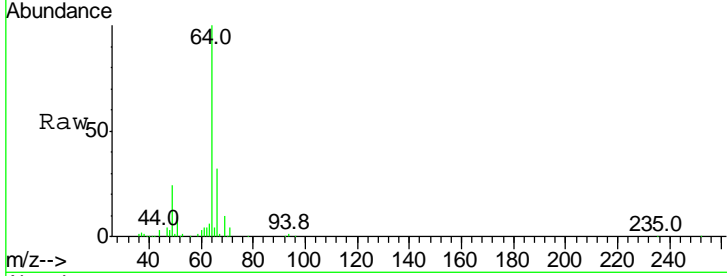




#8
 Chloroethane
 Concen: 31.860 ug/L
 RT: 2.93 min Scan# 168
 Delta R.T. 0.01 min
 Lab File: VW013616.D
 Acq: 18 Oct 2019 10:50

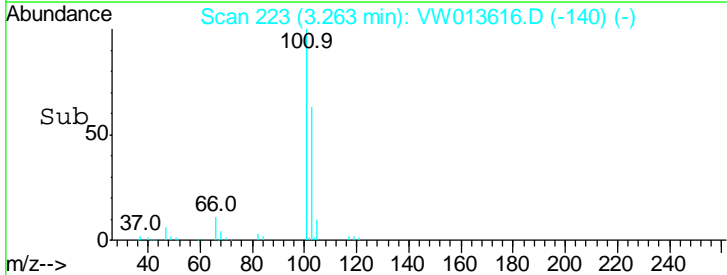
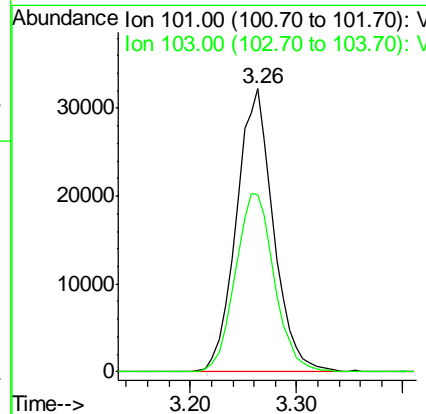
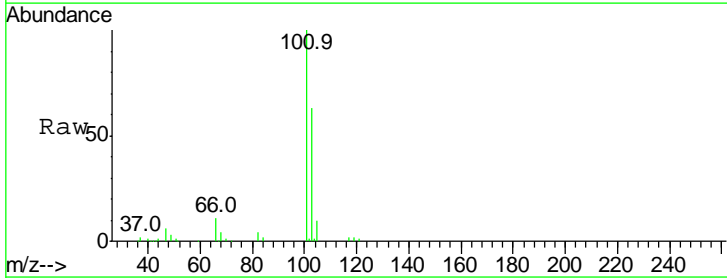
Instrument :
 MSVOA_W
 ClientSampled :
 VSTD02505

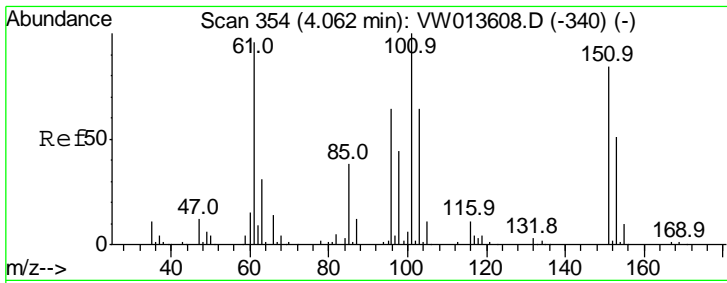
Tgt Ion: 64 Resp: 80944
 Ion Ratio Lower Upper
 64 100
 66 31.7 23.2 43.0



#9
 Trichlorofluoromethane
 Concen: 33.264 ug/L
 RT: 3.26 min Scan# 223
 Delta R.T. 0.01 min
 Lab File: VW013616.D
 Acq: 18 Oct 2019 10:50

Tgt Ion: 101 Resp: 78545
 Ion Ratio Lower Upper
 101 100
 103 66.5 46.0 85.4

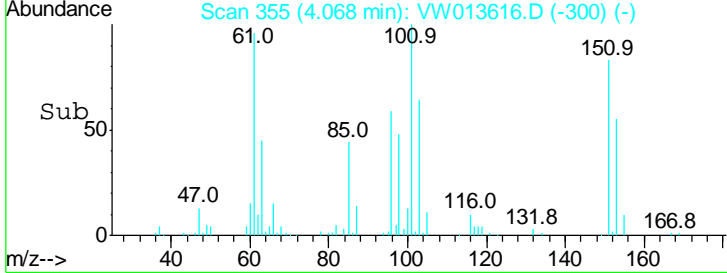
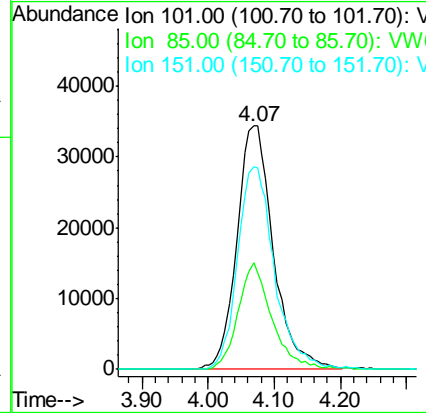
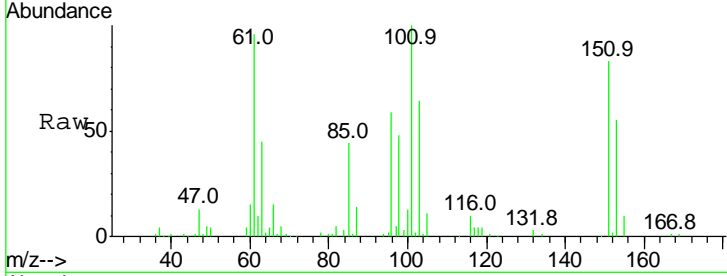




#11
 1,1,2-Trichloro-1,2,2-trifluoroethane
 Concen: 31.435 ug/L
 RT: 4.07 min Scan# 355
 Delta R.T. 0.01 min
 Lab File: VW013616.D
 Acq: 18 Oct 2019 10:50

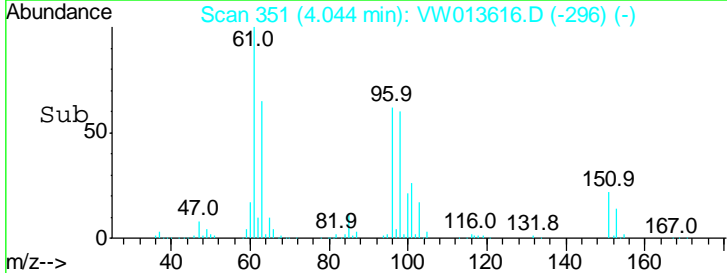
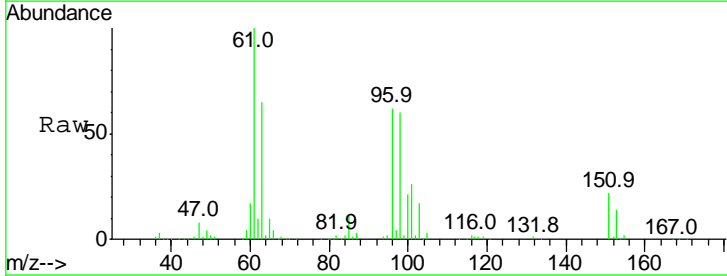
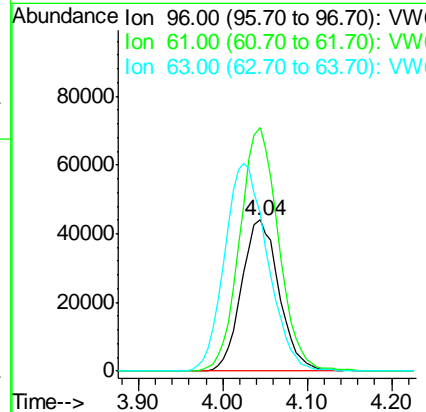
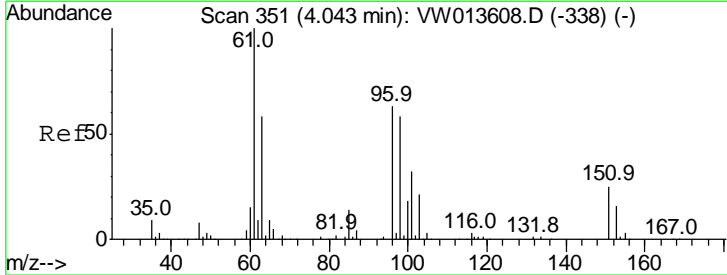
Instrument :
 MSVOA_W
ClientSampled :
 VSTD02505

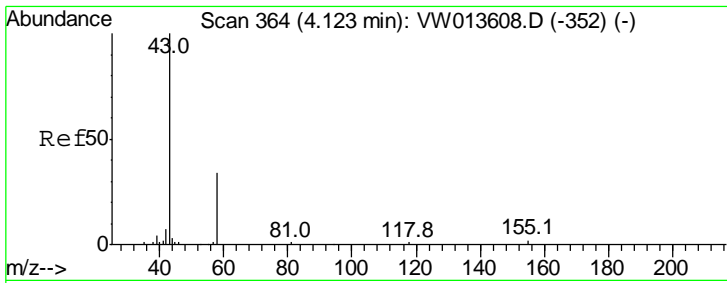
Tgt Ion	Resp	Lower	Upper
101	100		
85	40.0	32.0	48.0
151	83.6	67.0	100.6



#12
 1,1-Dichloroethene
 Concen: 31.628 ug/L
 RT: 4.04 min Scan# 351
 Delta R.T. 0.01 min
 Lab File: VW013616.D
 Acq: 18 Oct 2019 10:50

Tgt Ion	Resp	Lower	Upper
96	100		
61	161.0	111.0	206.2
63	104.0	86.3	160.3

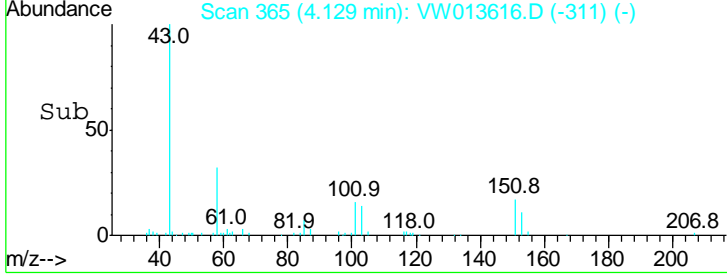
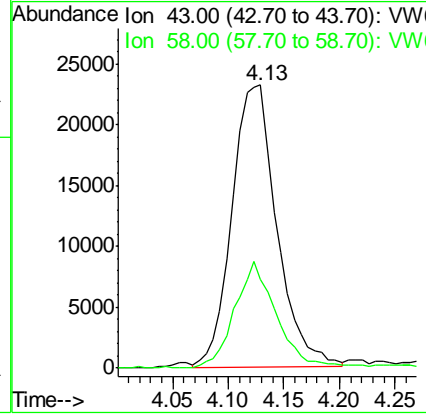
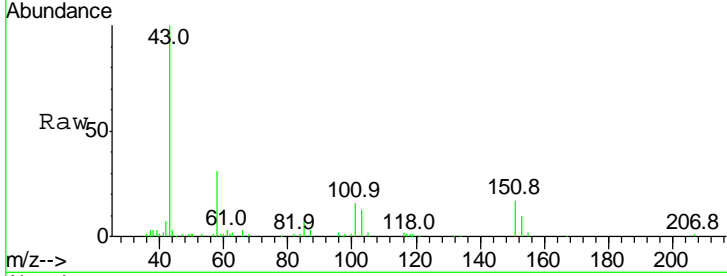




#13
 Acetone
 Concen: 49.043 ug/L
 RT: 4.13 min Scan# 365
 Delta R.T. -0.00 min
 Lab File: VW013616.D
 Acq: 18 Oct 2019 10:50

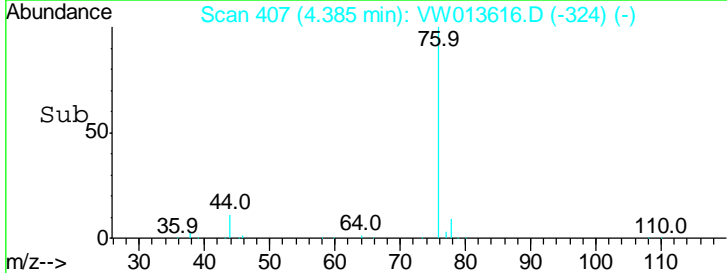
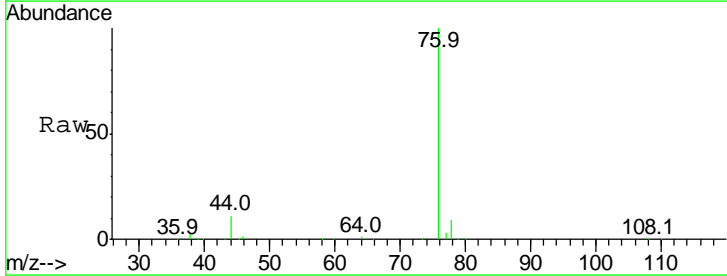
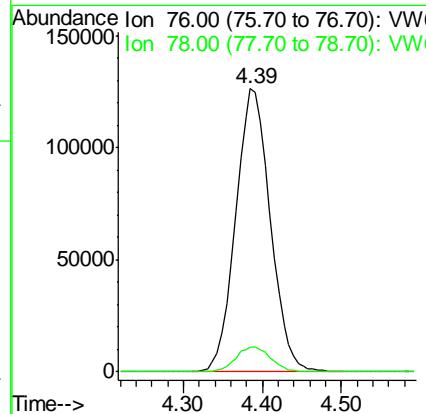
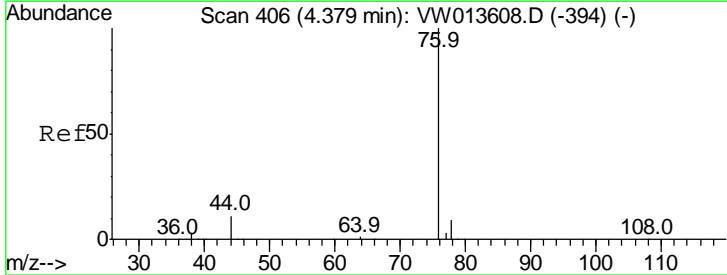
Instrument :
 MSVOA_W
ClientSampled :
 VSTD02505

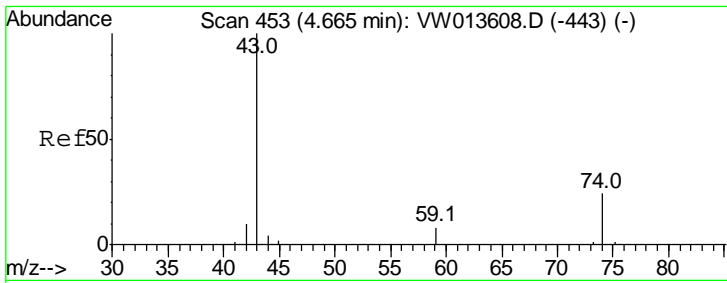
Tgt Ion: 43 Resp: 64977
 Ion Ratio Lower Upper
 43 100
 58 35.2 0.0 67.8



#14
 Carbon disulfide
 Concen: 30.147 ug/L
 RT: 4.39 min Scan# 407
 Delta R.T. 0.01 min
 Lab File: VW013616.D
 Acq: 18 Oct 2019 10:50

Tgt Ion: 76 Resp: 386167
 Ion Ratio Lower Upper
 76 100
 78 8.9 7.1 10.7

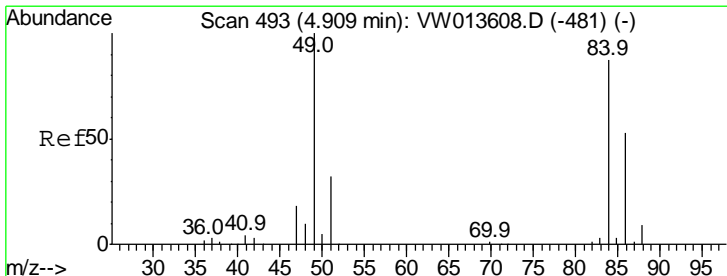
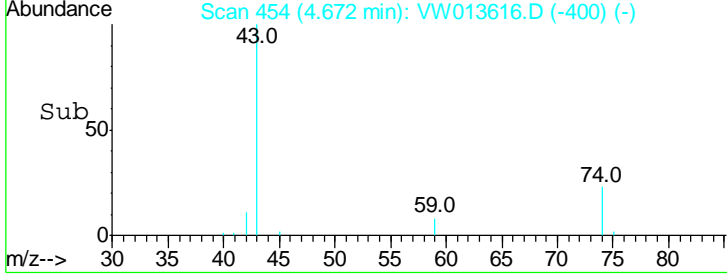
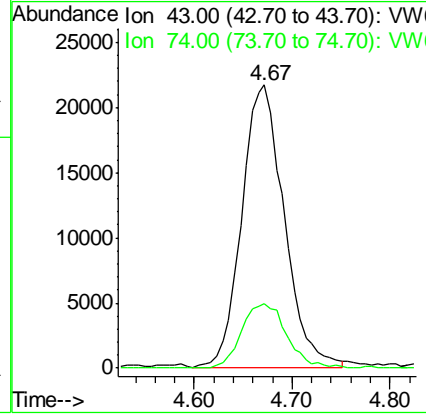
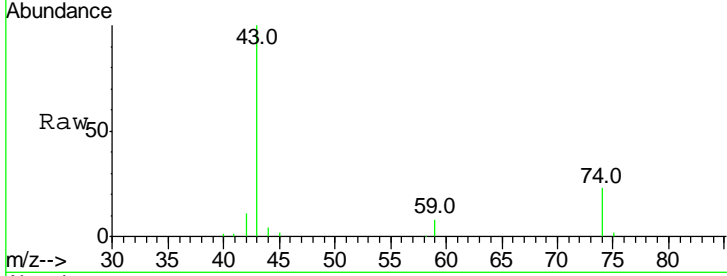




#15
 Methyl Acetate
 Concen: 31.462 ug/L
 RT: 4.67 min Scan# 454
 Delta R.T. -0.00 min
 Lab File: VW013616.D
 Acq: 18 Oct 2019 10:50

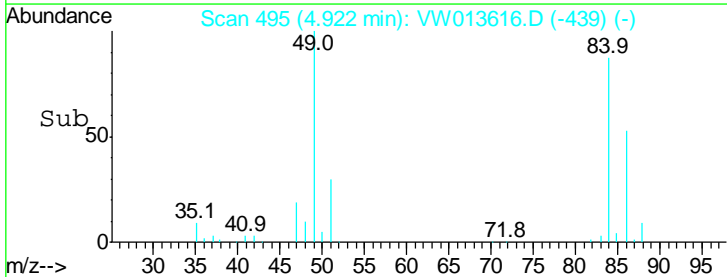
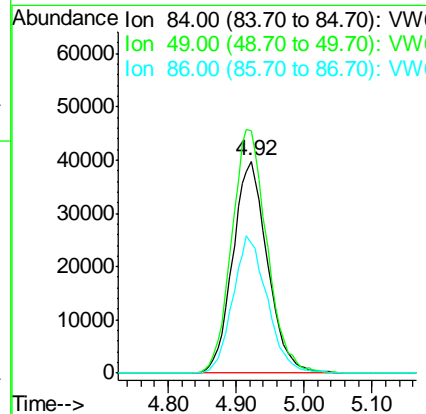
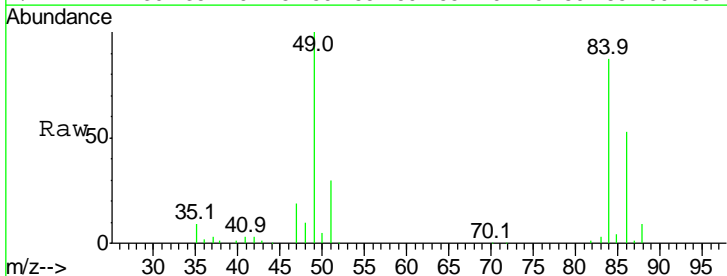
Instrument :
 MSVOA_W
 ClientSampled :
 VSTD02505

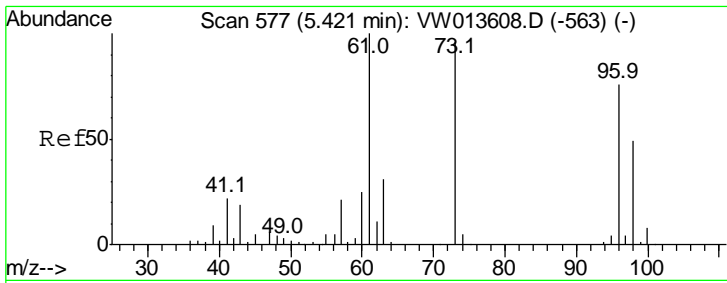
Tgt Ion	Resp	Lower	Upper
43	100		
74	24.0	18.7	28.1



#16
 Methylene chloride
 Concen: 27.889 ug/L
 RT: 4.92 min Scan# 495
 Delta R.T. 0.01 min
 Lab File: VW013616.D
 Acq: 18 Oct 2019 10:50

Tgt Ion	Resp	Lower	Upper
84	100		
49	114.5	81.3	151.1
86	61.0	46.3	86.1

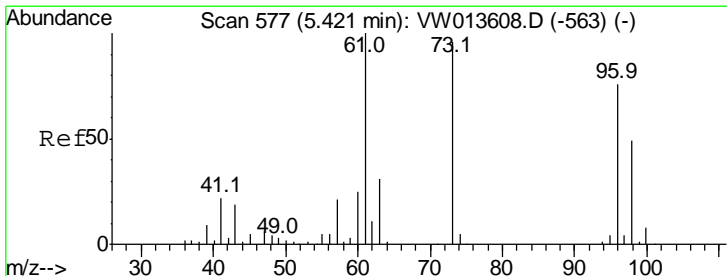
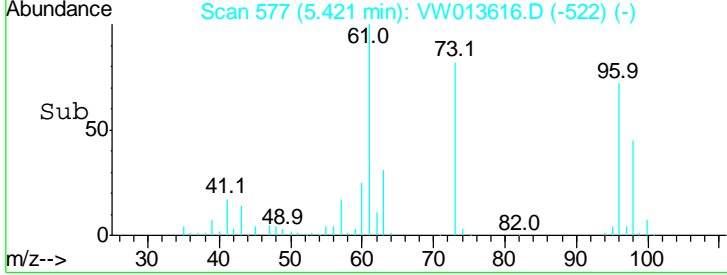
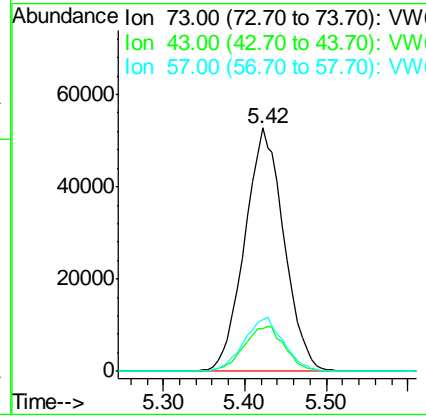
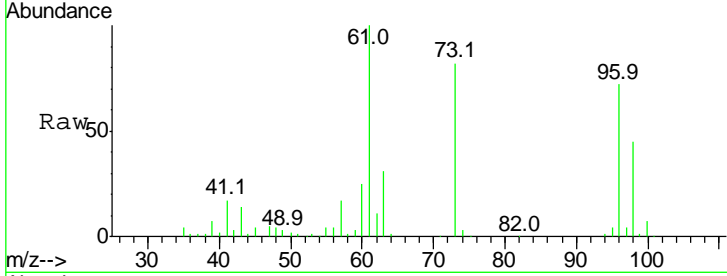




#17
 Methyl tert-butyl Ether
 Concen: 26.154 ug/L
 RT: 5.42 min Scan# 577
 Delta R.T. 0.01 min
 Lab File: VW013616.D
 Acq: 18 Oct 2019 10:50

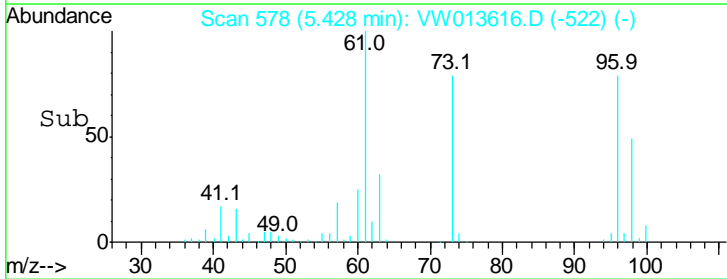
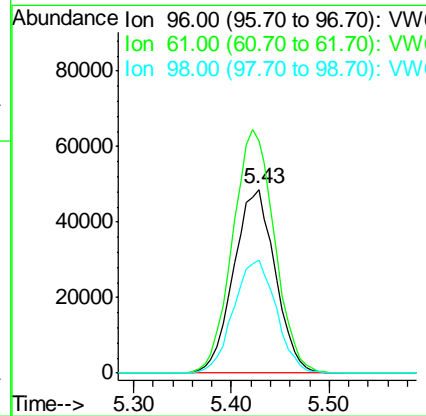
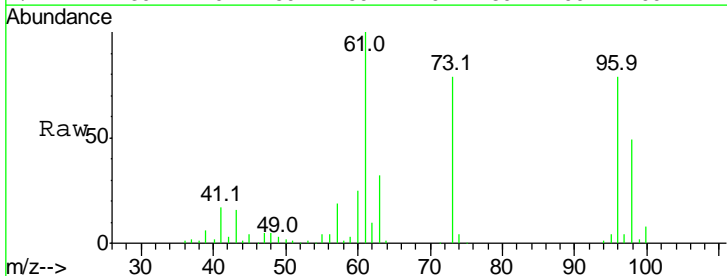
Instrument :
 MSVOA_W
ClientSampled :
 VSTD02505

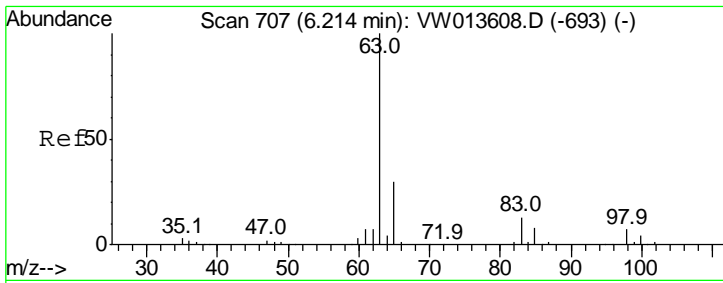
Tgt Ion	Resp	Lower	Upper
73	176417		
73	100		
43	19.3	15.0	22.4
57	22.1	18.1	27.1



#18
 trans-1,2-Dichloroethene
 Concen: 32.076 ug/L
 RT: 5.43 min Scan# 578
 Delta R.T. 0.01 min
 Lab File: VW013616.D
 Acq: 18 Oct 2019 10:50

Tgt Ion	Resp	Lower	Upper
96	143677		
96	100		
61	126.3	93.7	173.9
98	61.4	46.1	85.7

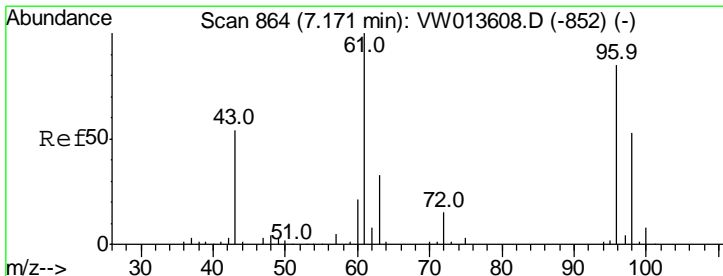
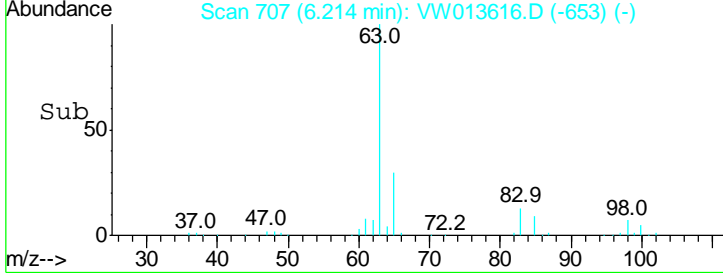
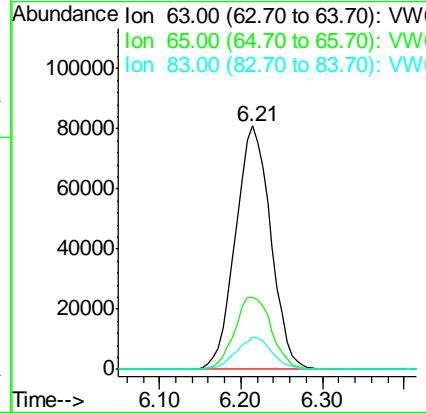
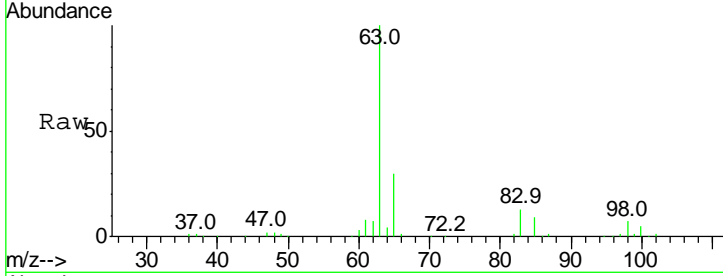




#19
 1,1-Dichloroethane
 Concen: 32.192 ug/L
 RT: 6.21 min Scan# 707
 Delta R.T. -0.00 min
 Lab File: VW013616.D
 Acq: 18 Oct 2019 10:50

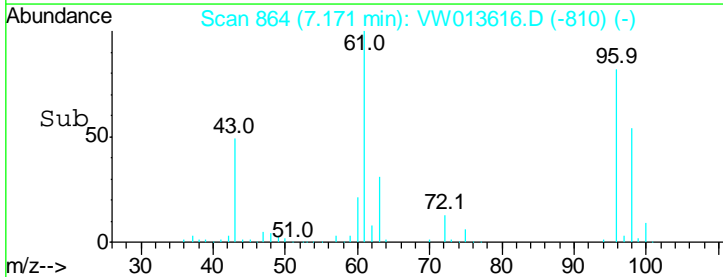
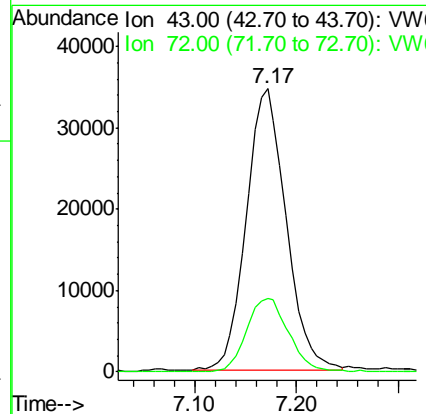
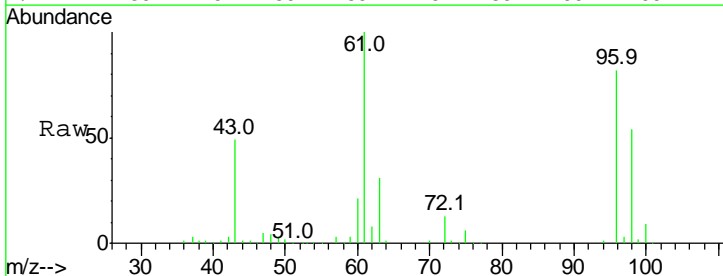
Instrument :
 MSVOA_W
ClientSampled :
 VSTD02505

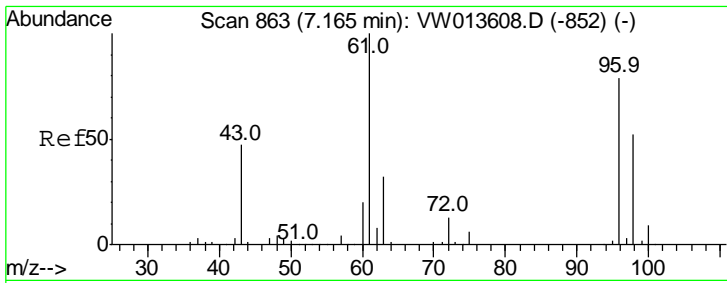
Tgt Ion	Resp	Lower	Upper
63	100		
65	29.8	21.6	40.0
83	13.2	9.0	16.6



#21
 2-Butanone
 Concen: 57.726 ug/L
 RT: 7.17 min Scan# 864
 Delta R.T. -0.00 min
 Lab File: VW013616.D
 Acq: 18 Oct 2019 10:50

Tgt Ion	Resp	Lower	Upper
43	100		
72	27.4	13.5	40.4

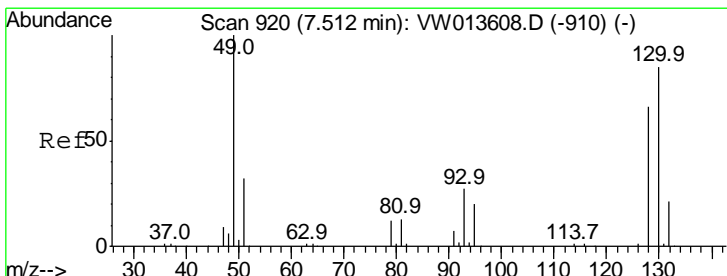
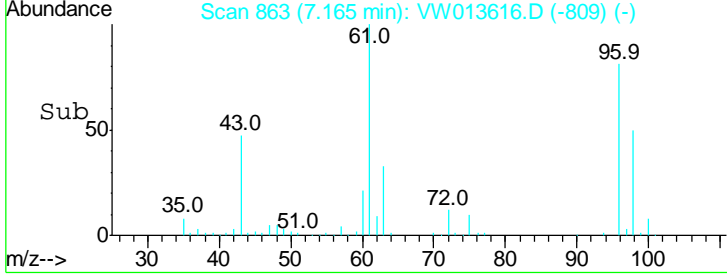
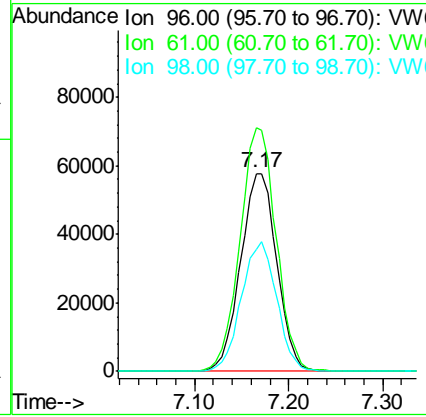
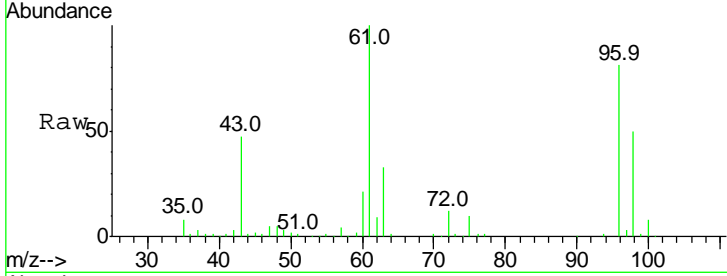




#22
 cis-1,2-Dichloroethene
 Concen: 32.163 ug/L
 RT: 7.17 min Scan# 863
 Delta R.T. -0.00 min
 Lab File: VW013616.D
 Acq: 18 Oct 2019 10:50

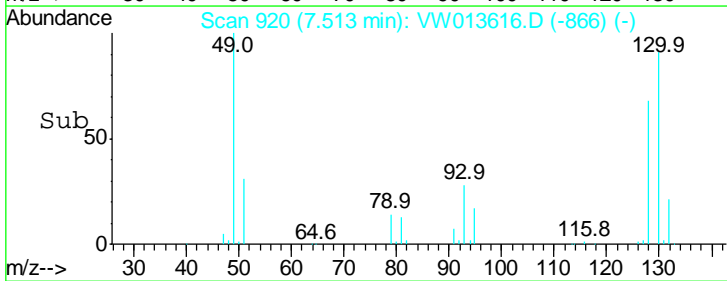
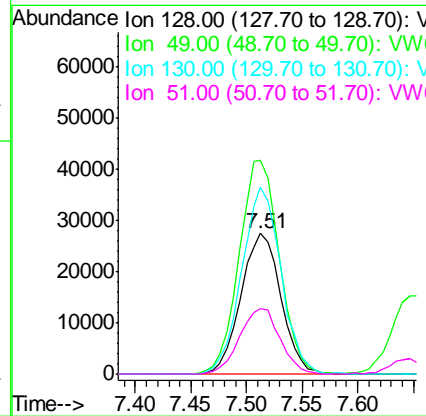
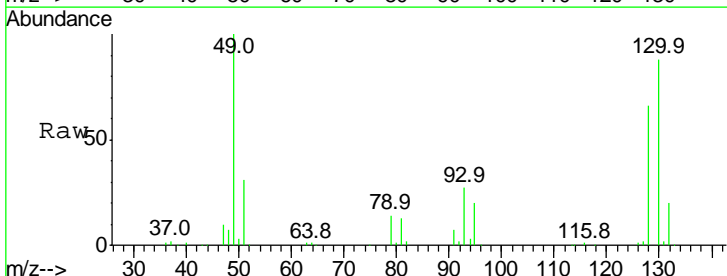
Instrument : MSVOA_W
 ClientSampled : VSTD02505

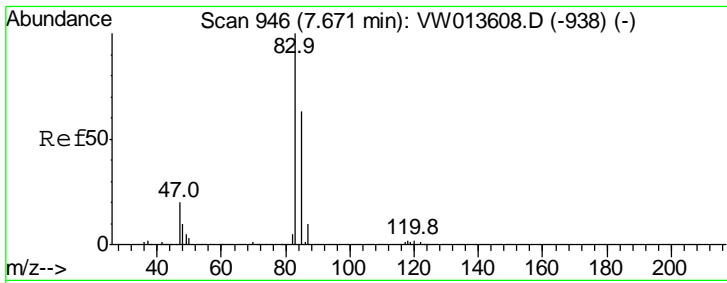
Tgt Ion	Resp	Lower	Upper
96	154082		
96	100		
61	123.1	86.0	159.8
98	61.4	44.4	82.5



#23
 Bromochloromethane
 Concen: 32.117 ug/L
 RT: 7.51 min Scan# 920
 Delta R.T. -0.00 min
 Lab File: VW013616.D
 Acq: 18 Oct 2019 10:50

Tgt Ion	Resp	Lower	Upper
128	68894		
128	100		
49	151.8	108.0	200.6
130	133.2	89.4	166.0
51	46.7	37.4	56.2

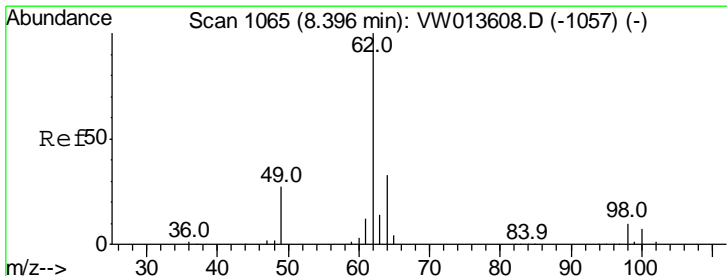
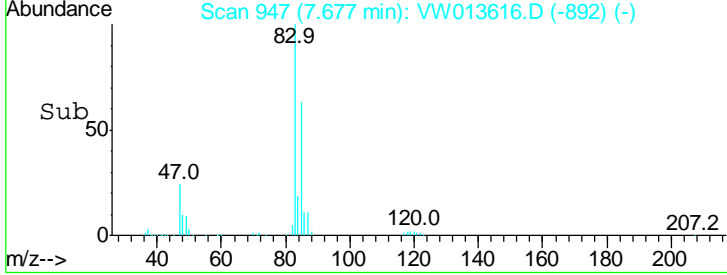
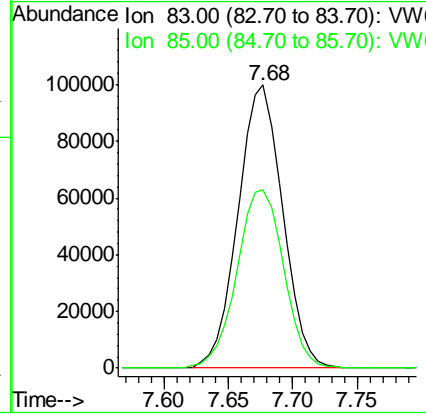
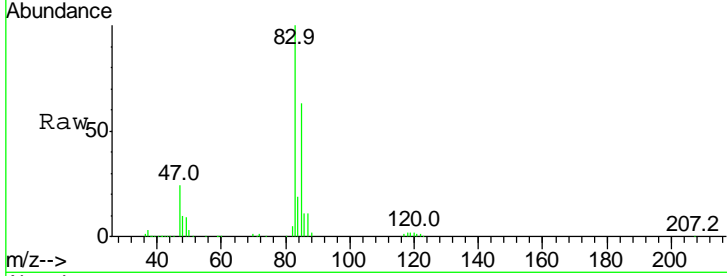




#25
 Chloroform
 Concen: 32.429 ug/L
 RT: 7.68 min Scan# 947
 Delta R.T. 0.01 min
 Lab File: VW013616.D
 Acq: 18 Oct 2019 10:50

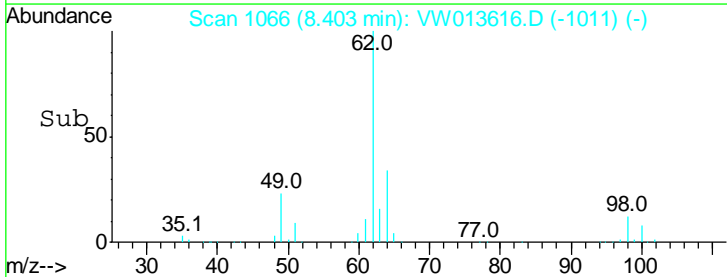
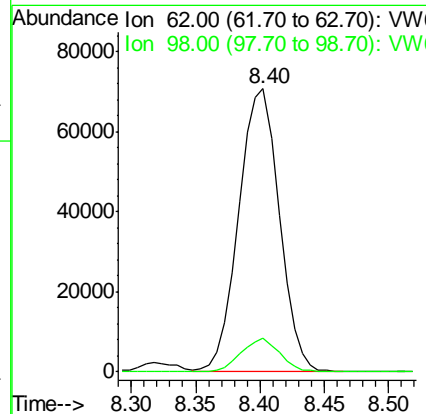
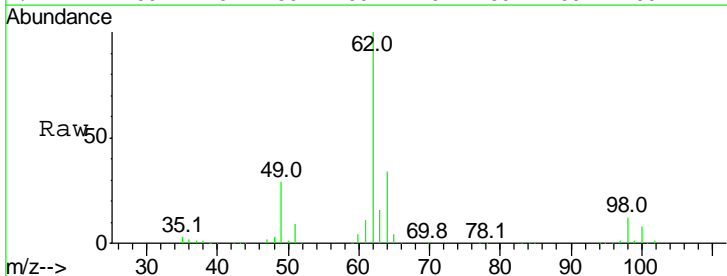
Instrument :
 MSVOA_W
 ClientSampled :
 VSTD02505

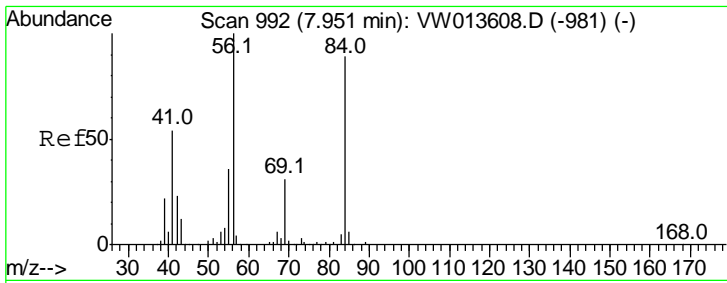
Tgt Ion	Resp	Lower	Upper
83	240591		
83	100		
85	65.9	46.1	85.5



#27
 1,2-Dichloroethane
 Concen: 32.926 ug/L
 RT: 8.40 min Scan# 1066
 Delta R.T. 0.01 min
 Lab File: VW013616.D
 Acq: 18 Oct 2019 10:50

Tgt Ion	Resp	Lower	Upper
62	154500		
62	100		
98	12.0	9.0	13.4

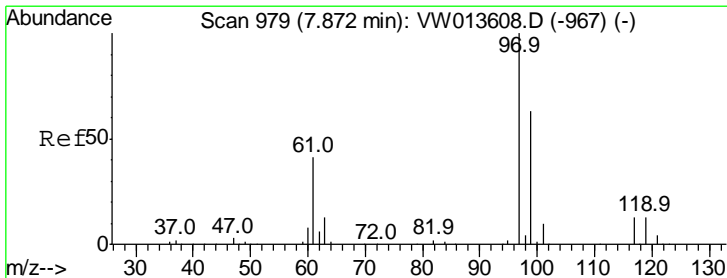
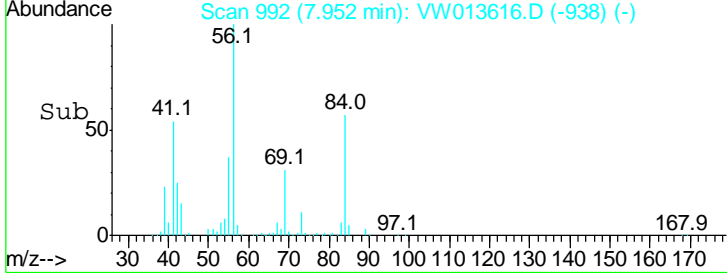
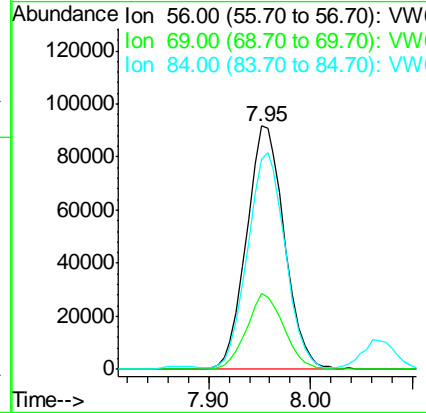
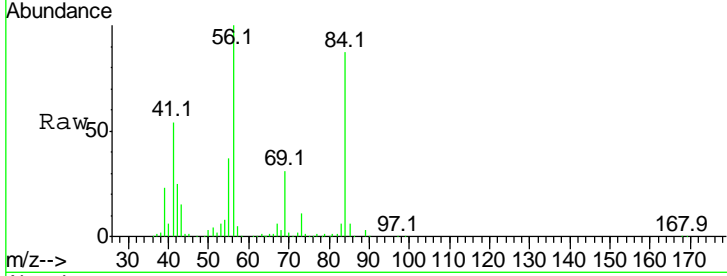




#30
 Cyclohexane
 Concen: 27.861 ug/L
 RT: 7.95 min Scan# 992
 Delta R.T. -0.00 min
 Lab File: VW013616.D
 Acq: 18 Oct 2019 10:50

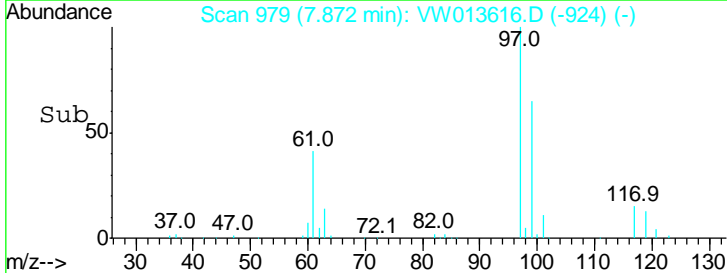
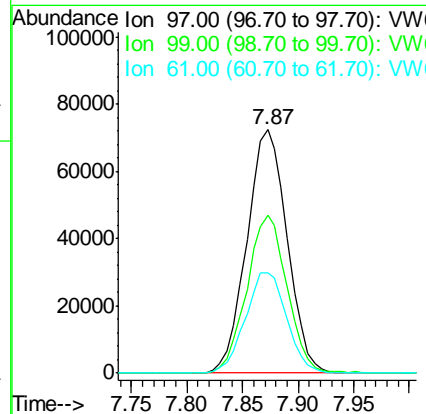
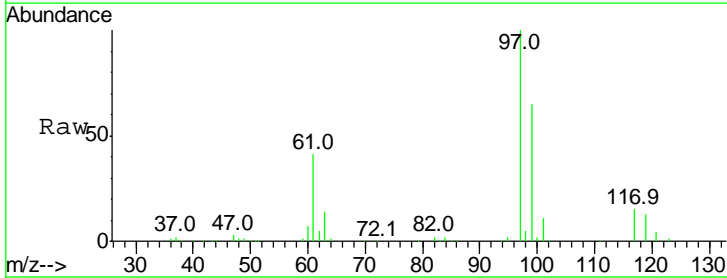
Instrument :
 MSVOA_W
 ClientSampleId :
 VSTD02505

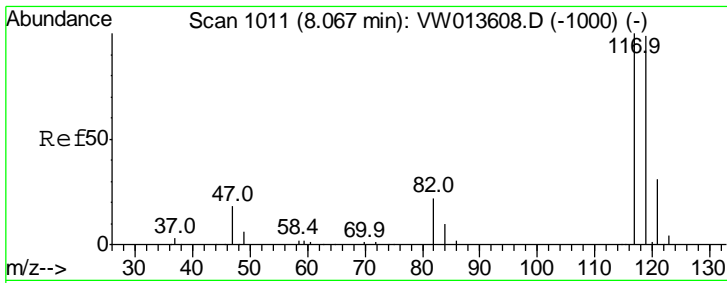
Tgt Ion	Resp	Lower	Upper
56	100		
69	30.8	24.7	37.1
84	88.9	70.4	105.6



#31
 1,1,1-Trichloroethane
 Concen: 27.999 ug/L
 RT: 7.87 min Scan# 979
 Delta R.T. 0.01 min
 Lab File: VW013616.D
 Acq: 18 Oct 2019 10:50

Tgt Ion	Resp	Lower	Upper
97	100		
99	64.6	51.8	77.8
61	42.3	33.7	50.5

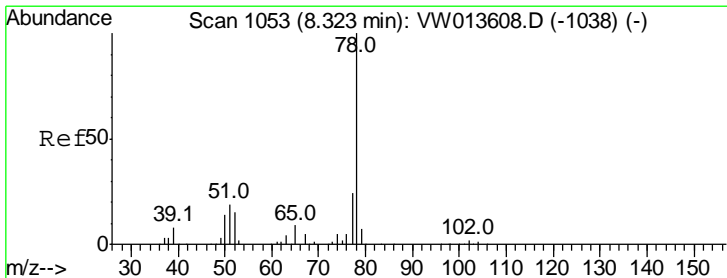
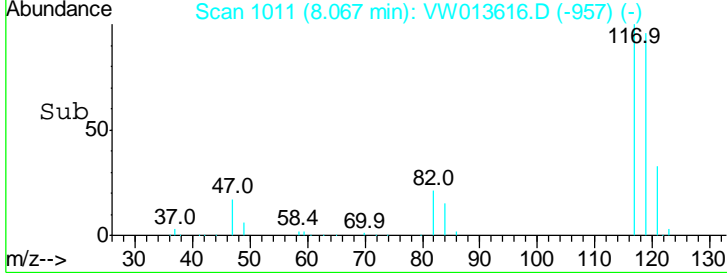
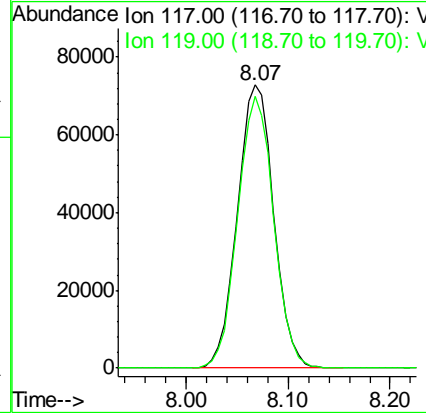
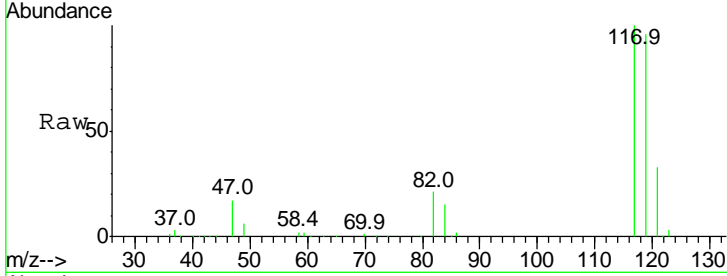




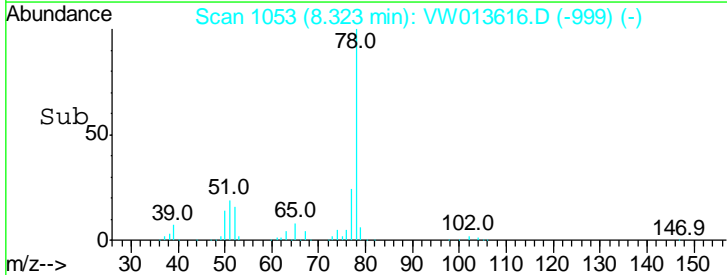
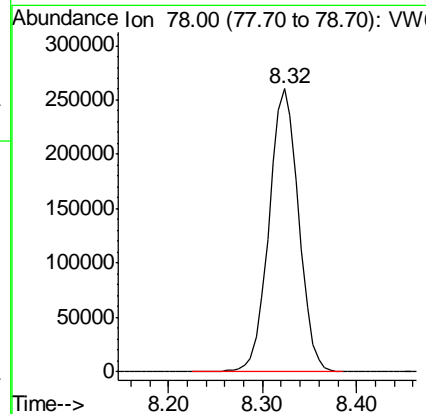
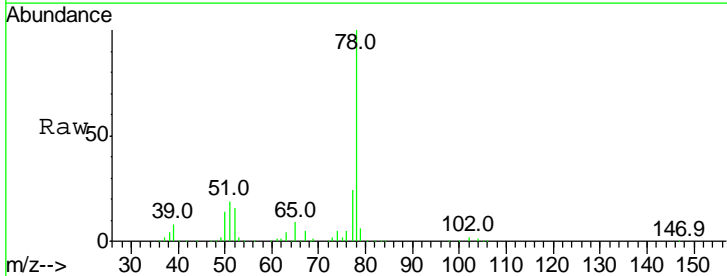
#32
 Carbon tetrachloride
 Concen: 28.836 ug/L
 RT: 8.07 min Scan# 1011
 Delta R.T. -0.00 min
 Lab File: VW013616.D
 Acq: 18 Oct 2019 10:50

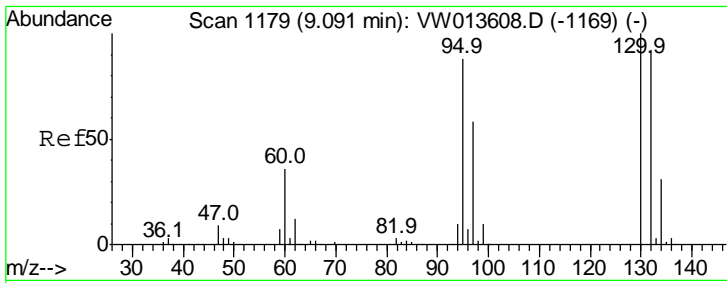
Instrument : MSVOA_W
 ClientSampled : VSTD02505

Tgt Ion: 117 Resp: 180143
 Ion Ratio Lower Upper
 117 100
 119 95.1 76.1 114.1



#34
 Benzene
 Concen: 29.355 ug/L
 RT: 8.32 min Scan# 1053
 Delta R.T. -0.00 min
 Lab File: VW013616.D
 Acq: 18 Oct 2019 10:50
 Tgt Ion: 78 Resp: 573451

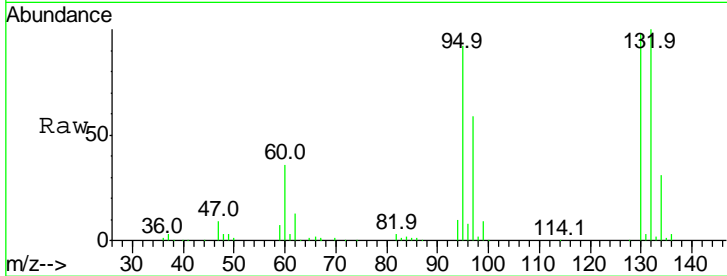




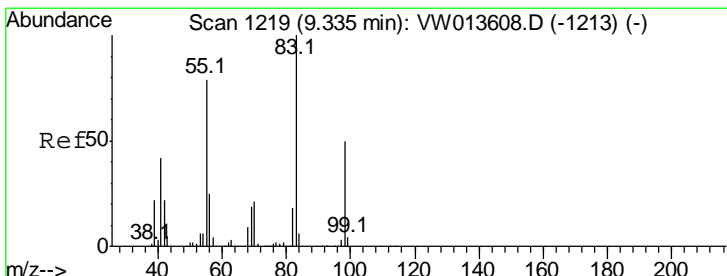
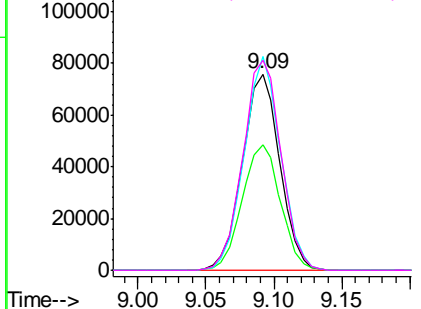
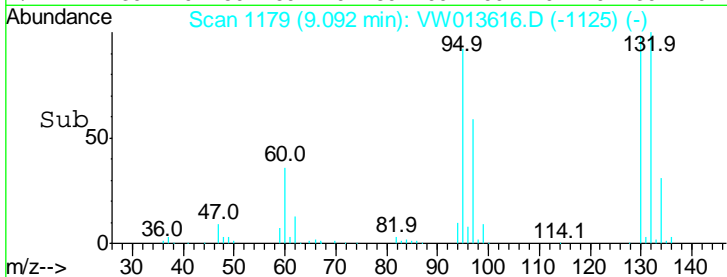
#35
 Trichloroethene
 Concen: 28.724 ug/L
 RT: 9.09 min Scan# 1179
 Delta R.T. -0.00 min
 Lab File: VW013616.D
 Acq: 18 Oct 2019 10:50

Instrument :
 MSVOA_W
ClientSampled :
 VSTD02505

Tgt Ion	Resp	Lower	Upper
95	146367		
95	100		
97	65.5	45.1	83.7
132	106.2	73.6	136.8
130	109.5	76.3	141.7

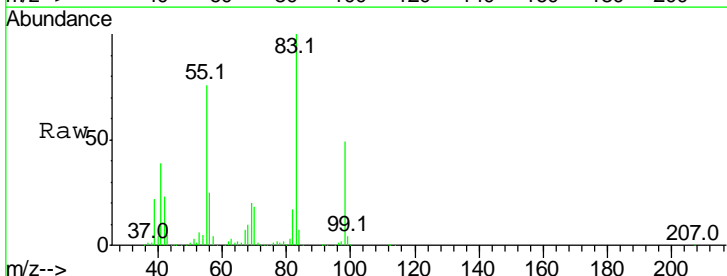


Abundance
 Ion 95.00 (94.70 to 95.70): VW
 Ion 97.00 (96.70 to 97.70): VW
 Ion 132.00 (131.70 to 132.70): V
 Ion 130.00 (129.70 to 130.70): V

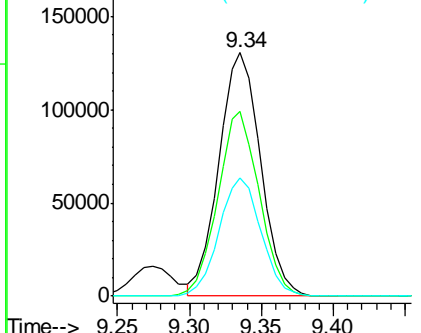
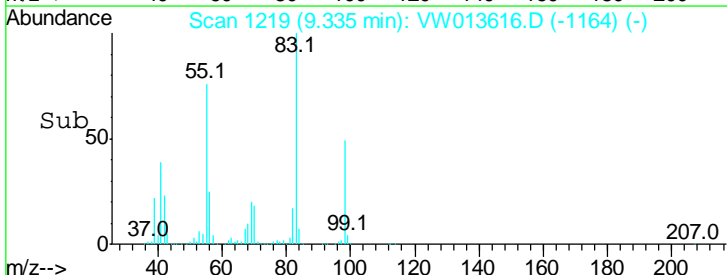


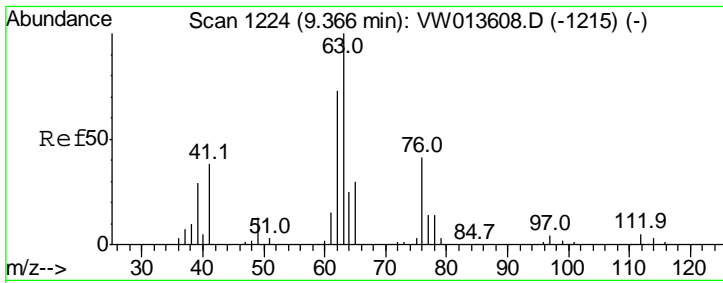
#36
 Methylcyclohexane
 Concen: 28.515 ug/L
 RT: 9.34 min Scan# 1219
 Delta R.T. 0.01 min
 Lab File: VW013616.D
 Acq: 18 Oct 2019 10:50

Tgt Ion	Resp	Lower	Upper
83	264230		
83	100		
55	75.3	60.4	90.6
98	48.9	39.3	58.9



Abundance
 Ion 83.00 (82.70 to 83.70): VW
 Ion 55.00 (54.70 to 55.70): VW
 Ion 98.00 (97.70 to 98.70): VW

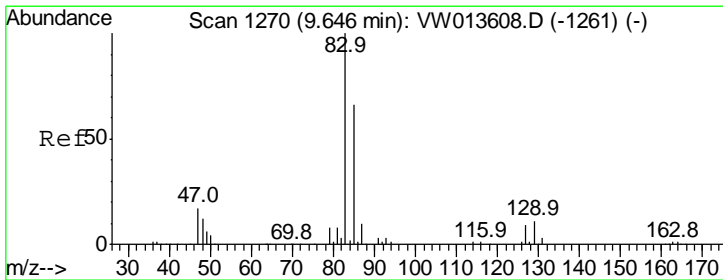
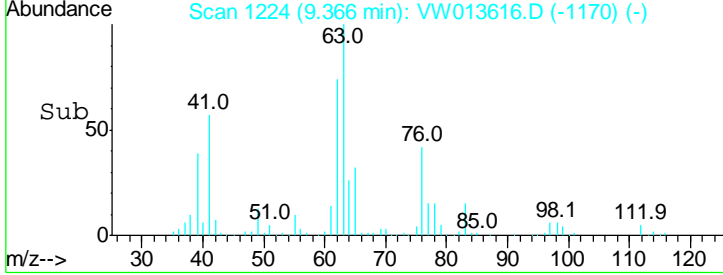
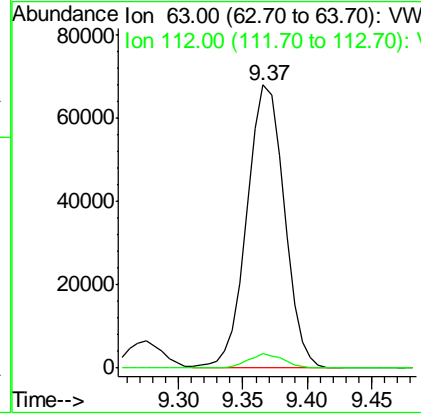
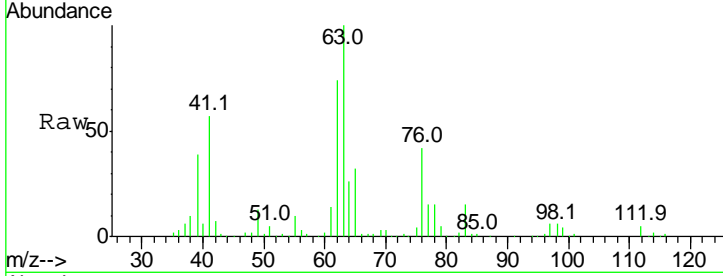




#40
 1,2-Dichloropropane
 Concen: 29.140 ug/L
 RT: 9.37 min Scan# 1224
 Delta R.T. -0.00 min
 Lab File: VW013616.D
 Acq: 18 Oct 2019 10:50

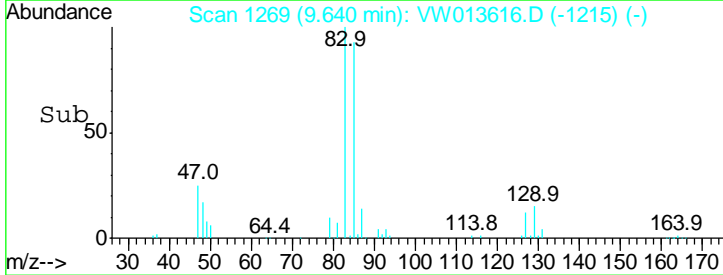
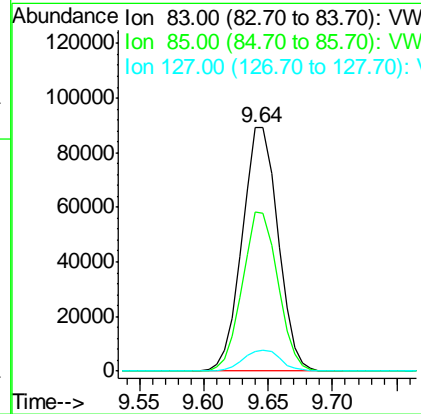
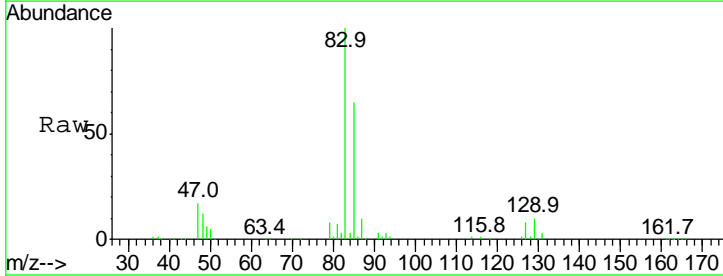
Instrument :
 MSVOA_W
 ClientSampled :
 VSTD02505

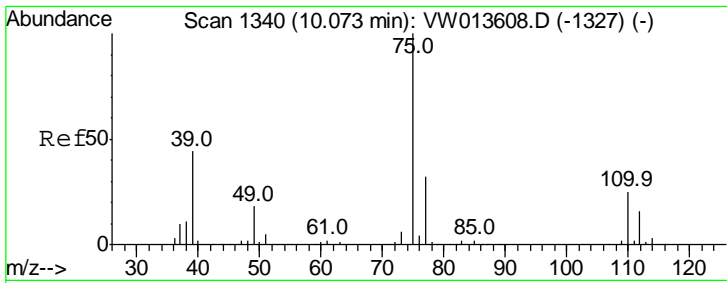
Tgt Ion: 63 Resp: 137133
 Ion Ratio Lower Upper
 63 100
 112 4.9 3.8 5.8



#41
 Bromodichloromethane
 Concen: 29.818 ug/L
 RT: 9.64 min Scan# 1269
 Delta R.T. -0.00 min
 Lab File: VW013616.D
 Acq: 18 Oct 2019 10:50

Tgt Ion: 83 Resp: 172354
 Ion Ratio Lower Upper
 83 100
 85 65.4 45.1 83.9
 127 8.3 7.1 10.7

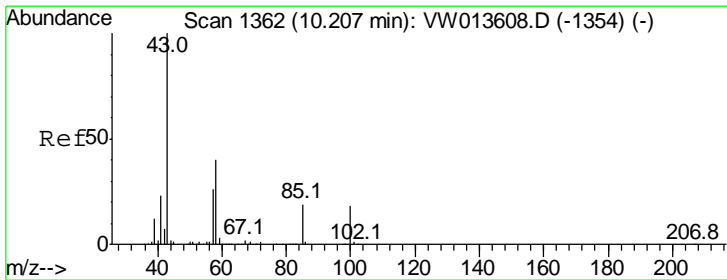
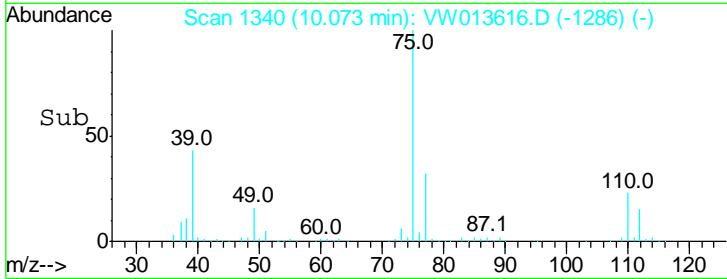
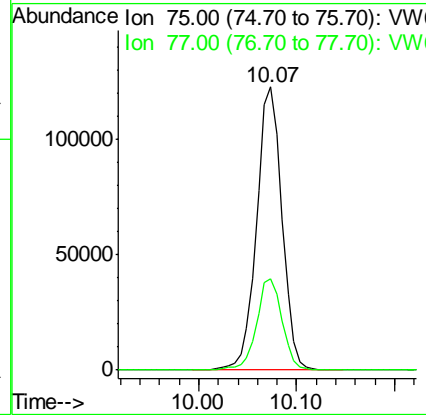
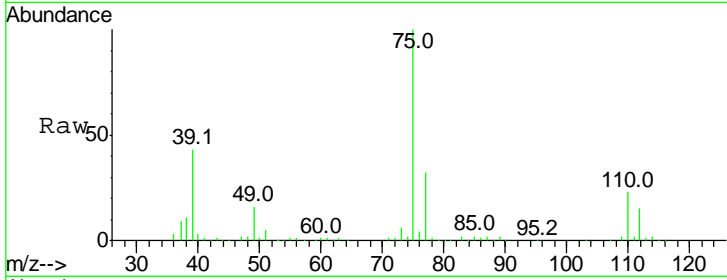




#42
 cis-1,3-Dichloropropene
 Concen: 29.416 ug/L
 RT: 10.07 min Scan# 1340
 Delta R.T. -0.00 min
 Lab File: VW013616.D
 Acq: 18 Oct 2019 10:50

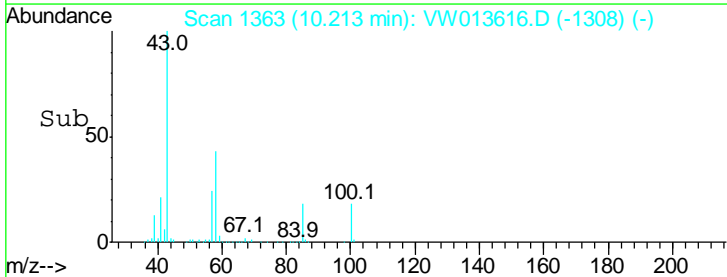
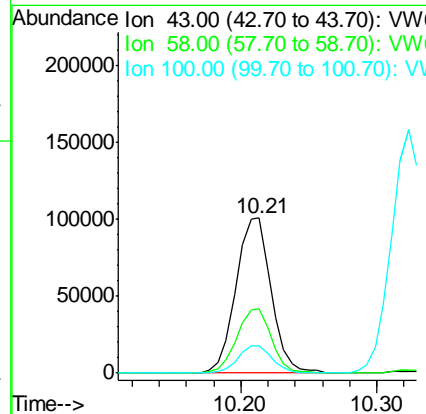
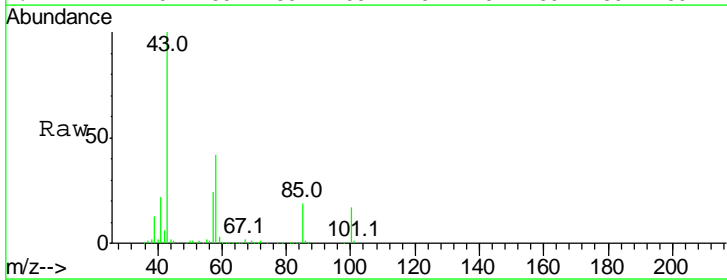
Instrument :
 MSVOA_W
 ClientSampled :
 VSTD02505

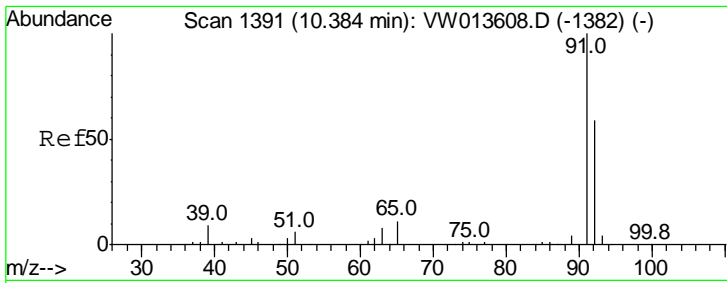
Tgt Ion: 75 Resp: 222083
 Ion Ratio Lower Upper
 75 100
 77 32.2 21.6 40.2



#43
 4-Methyl-2-pentanone
 Concen: 55.433 ug/L
 RT: 10.21 min Scan# 1363
 Delta R.T. 0.01 min
 Lab File: VW013616.D
 Acq: 18 Oct 2019 10:50

Tgt Ion: 43 Resp: 182014
 Ion Ratio Lower Upper
 43 100
 58 41.0 32.0 48.0
 100 17.1 13.7 20.5



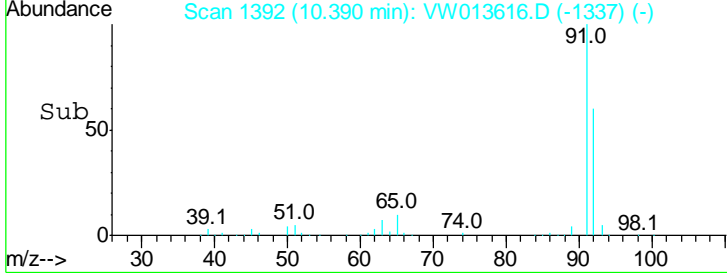
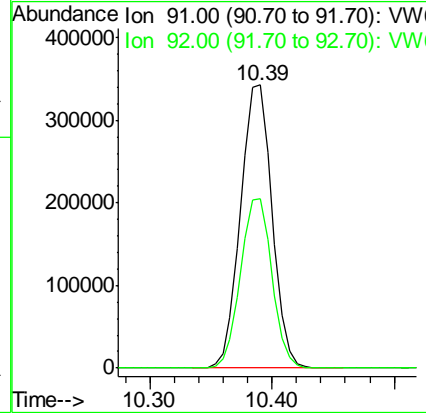
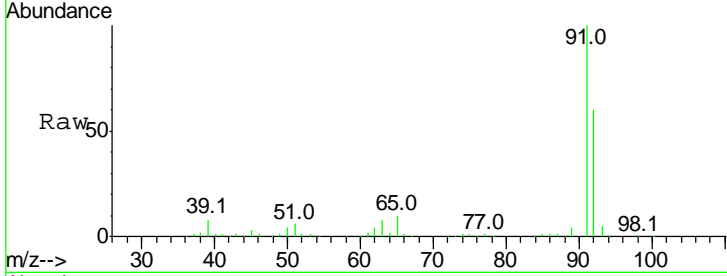


#44
 Toluene
 Concen: 28.964 ug/L
 RT: 10.39 min Scan# 1392
 Delta R.T. 0.01 min
 Lab File: VW013616.D
 Acq: 18 Oct 2019 10:50

Instrument : MSVOA_W
 ClientSampled : VSTD02505

Tgt Ion: 91 Resp: 613193

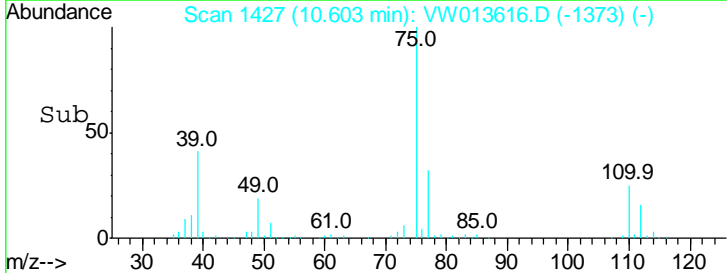
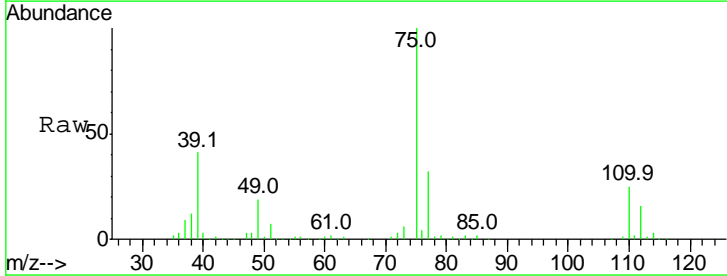
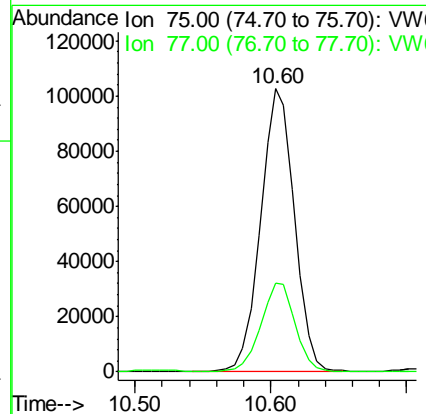
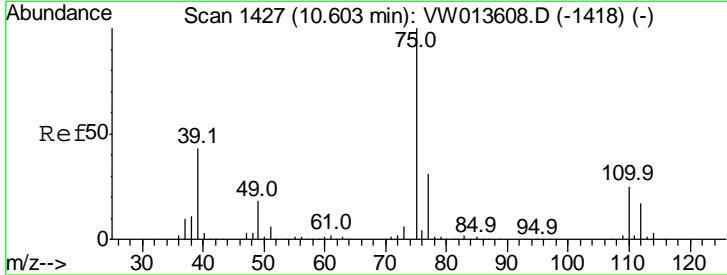
Ion	Ratio	Lower	Upper
91	100		
92	60.0	40.0	74.4

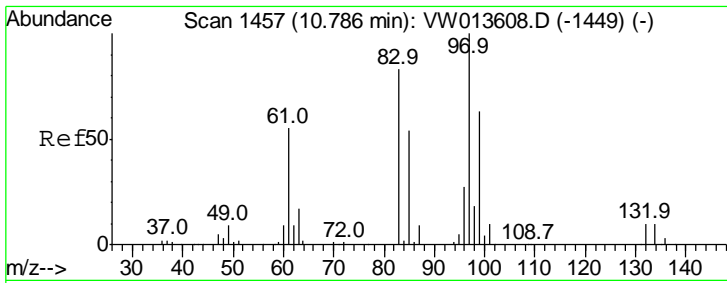


#45
 trans-1,3-Dichloropropene
 Concen: 29.953 ug/L
 RT: 10.60 min Scan# 1427
 Delta R.T. -0.00 min
 Lab File: VW013616.D
 Acq: 18 Oct 2019 10:50

Tgt Ion: 75 Resp: 178564

Ion	Ratio	Lower	Upper
75	100		
77	31.5	23.0	42.6

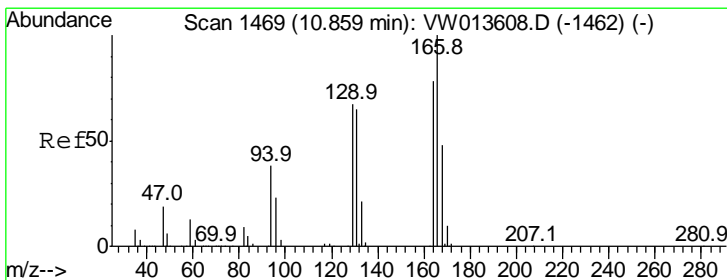
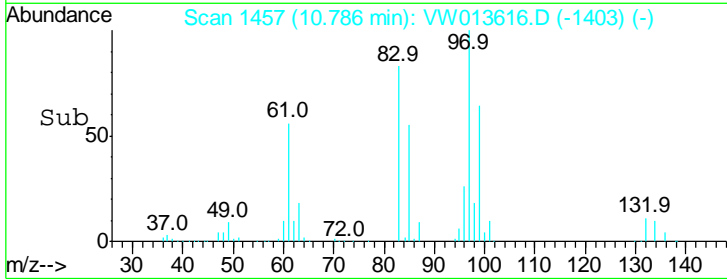
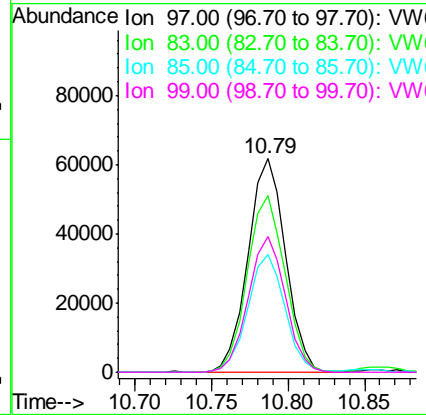
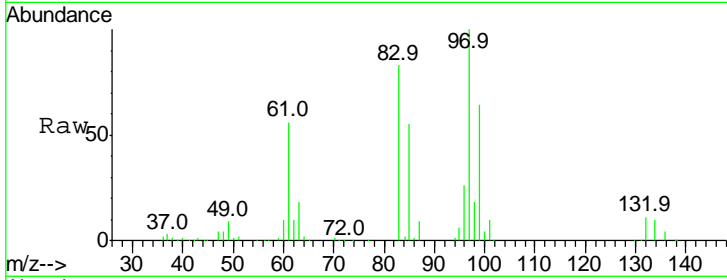




#46
 1,1,2-Trichloroethane
 Concen: 29.471 ug/L
 RT: 10.79 min Scan# 1457
 Delta R.T. -0.00 min
 Lab File: VW013616.D
 Acq: 18 Oct 2019 10:50

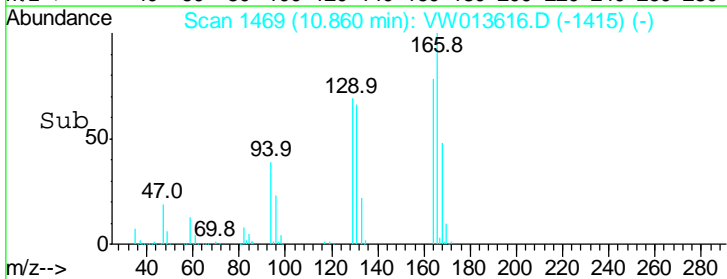
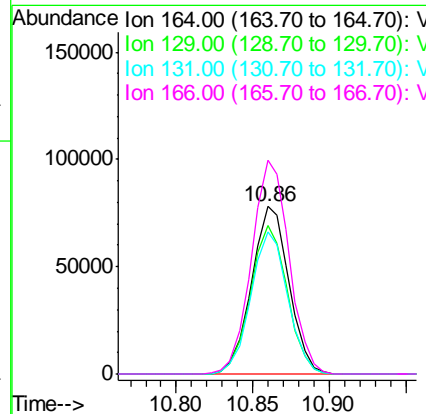
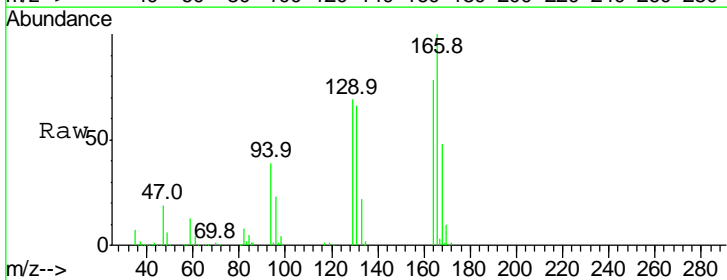
Instrument :
 MSVOA_W
 ClientSampled :
 VSTD02505

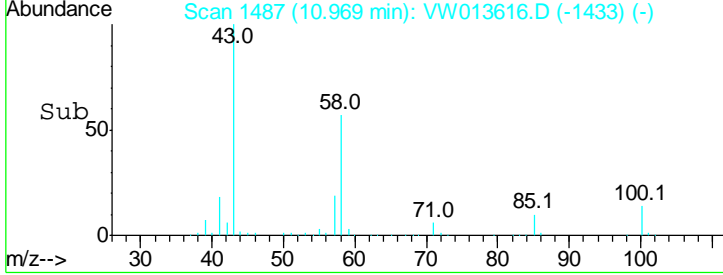
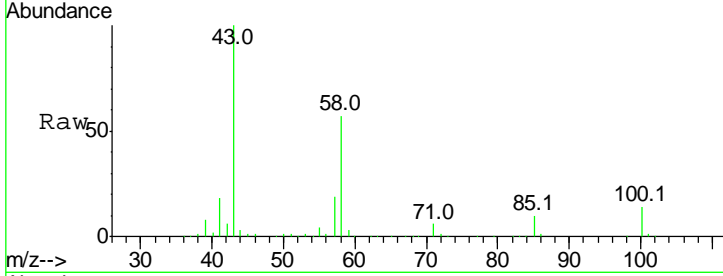
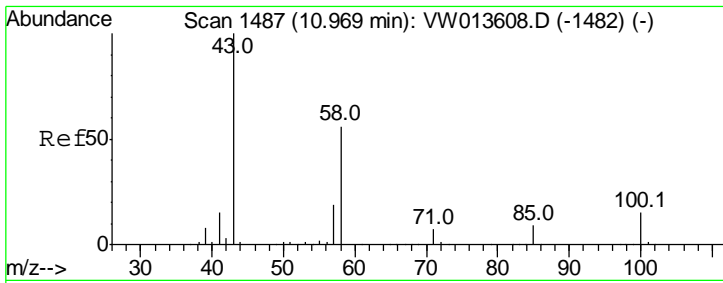
Tgt Ion	Resp	Lower	Upper
97	105280		
83	82.5	57.5	106.9
85	55.1	36.8	68.4
99	63.8	44.0	81.6



#47
 Tetrachloroethene
 Concen: 28.564 ug/L
 RT: 10.86 min Scan# 1469
 Delta R.T. -0.00 min
 Lab File: VW013616.D
 Acq: 18 Oct 2019 10:50

Tgt Ion	Resp	Lower	Upper
164	132653		
129	88.3	60.2	111.8
131	84.6	57.0	105.9
166	127.5	91.2	169.4

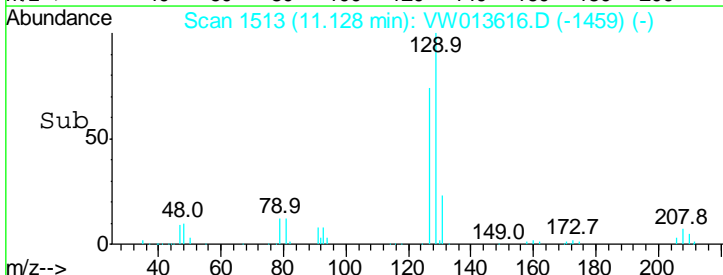
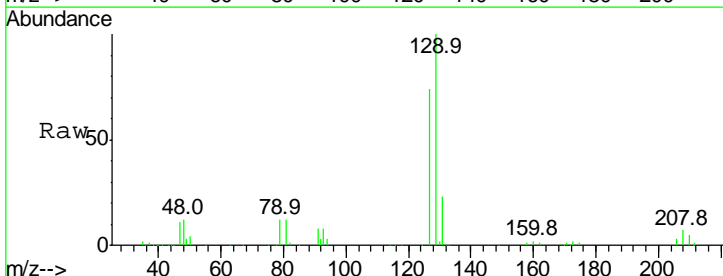
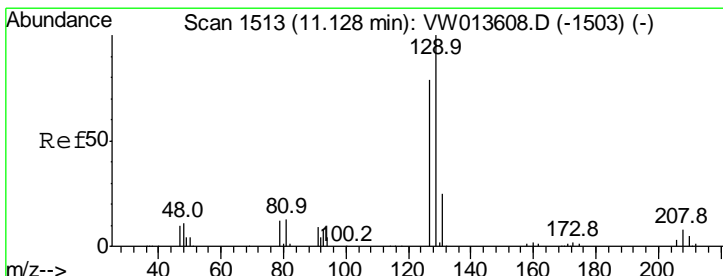
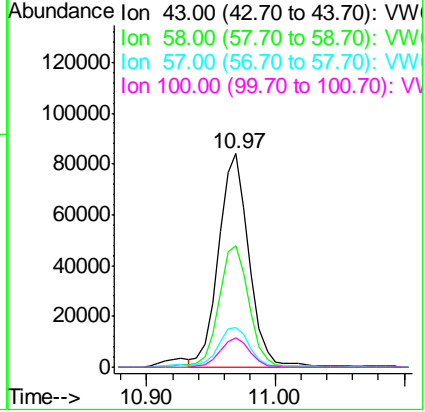




#49
 2-Hexanone
 Concen: 58.459 ug/L
 RT: 10.97 min Scan# 1487
 Delta R.T. -0.00 min
 Lab File: VW013616.D
 Acq: 18 Oct 2019 10:50

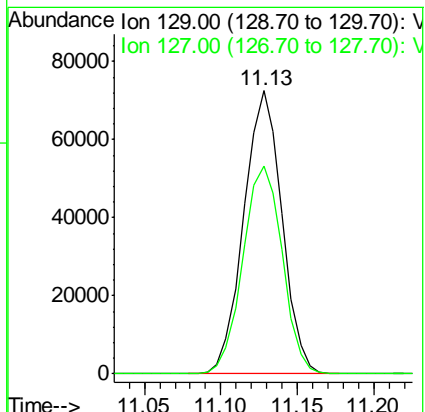
Instrument : MSVOA_W
 ClientSampled : VSTD02505

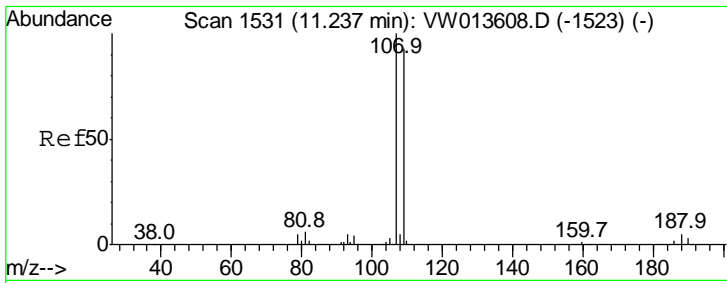
Tgt Ion	Resp	Lower	Upper
43	139506		
58	57.2	45.2	67.8
57	19.3	15.8	23.8
100	13.5	11.0	16.6



#50
 Dibromochloromethane
 Concen: 29.987 ug/L
 RT: 11.13 min Scan# 1513
 Delta R.T. -0.00 min
 Lab File: VW013616.D
 Acq: 18 Oct 2019 10:50

Tgt Ion	Resp	Lower	Upper
129	126127		
127	73.5	54.7	101.5

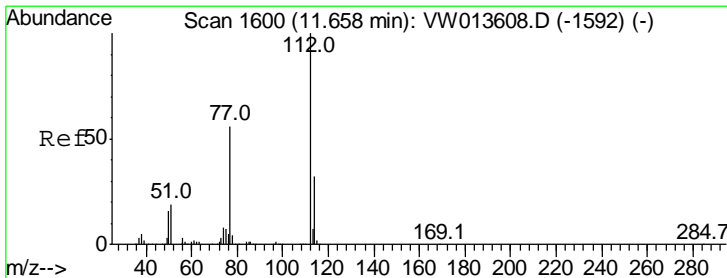
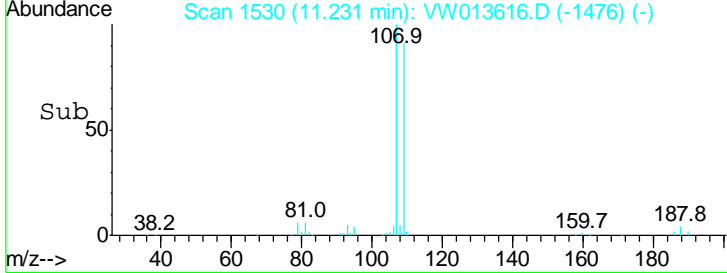
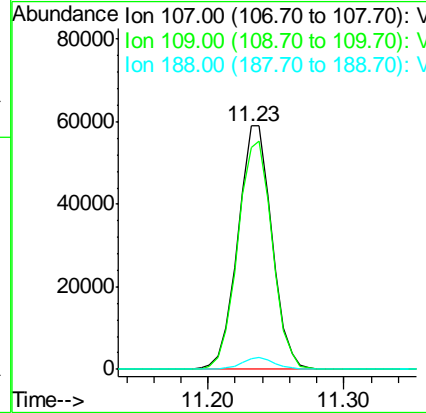
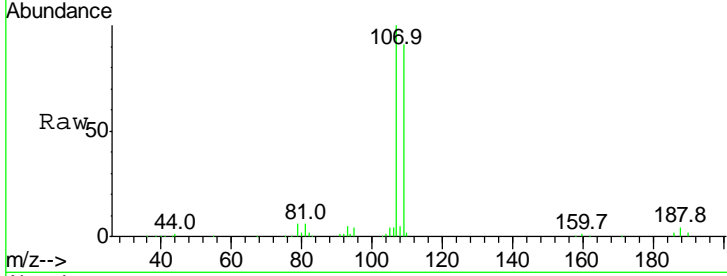




#51
 1,2-Dibromoethane
 Concen: 29.307 ug/L
 RT: 11.23 min Scan# 1530
 Delta R.T. -0.00 min
 Lab File: VW013616.D
 Acq: 18 Oct 2019 10:50

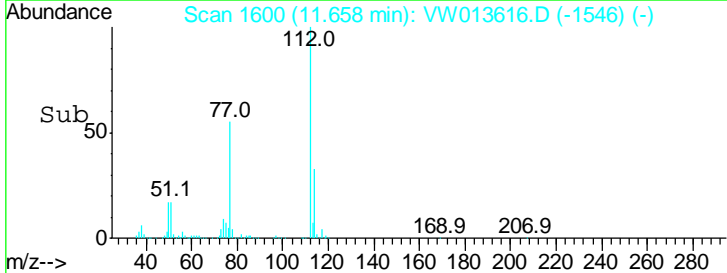
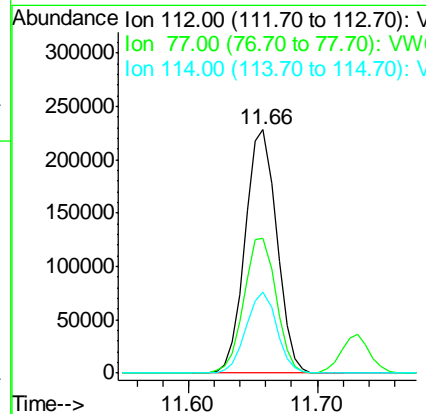
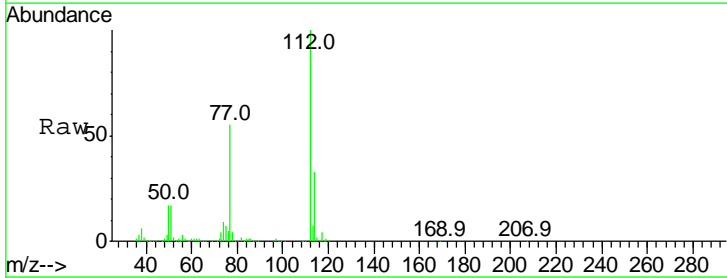
Instrument :
 MSVOA_W
 ClientSampled :
 VSTD02505

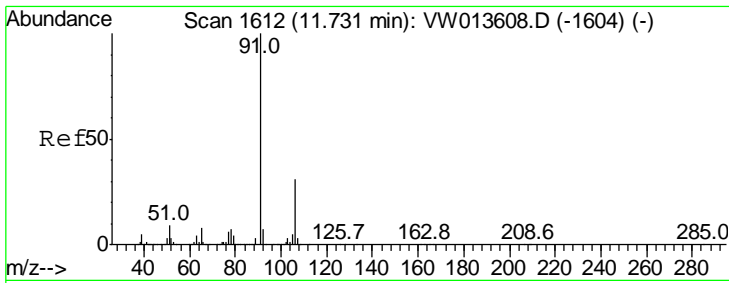
Tgt Ion	Resp	Lower	Upper
107	102843		
107	100		
109	91.4	65.5	121.7
188	4.3	3.6	5.4



#52
 Chlorobenzene
 Concen: 28.786 ug/L
 RT: 11.66 min Scan# 1600
 Delta R.T. -0.00 min
 Lab File: VW013616.D
 Acq: 18 Oct 2019 10:50

Tgt Ion	Resp	Lower	Upper
112	386782		
112	100		
77	55.1	44.5	66.7
114	33.4	22.7	42.3

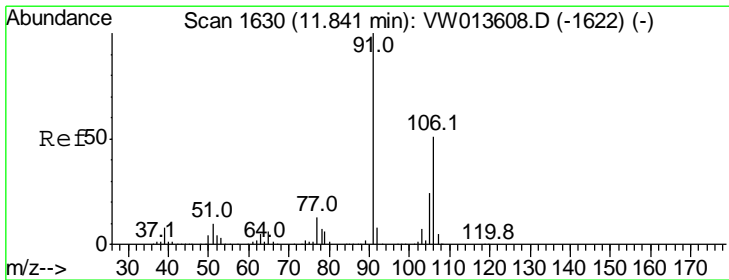
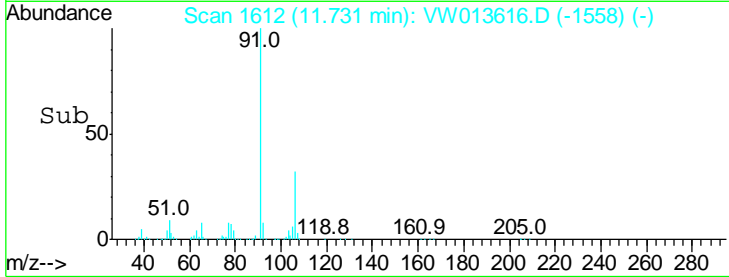
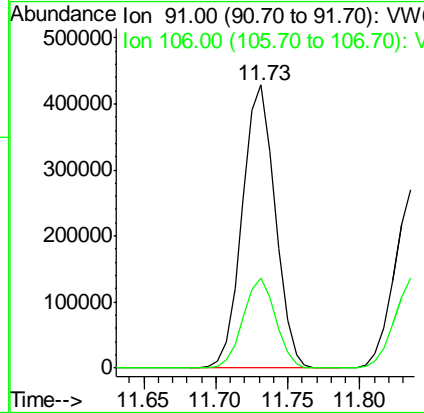
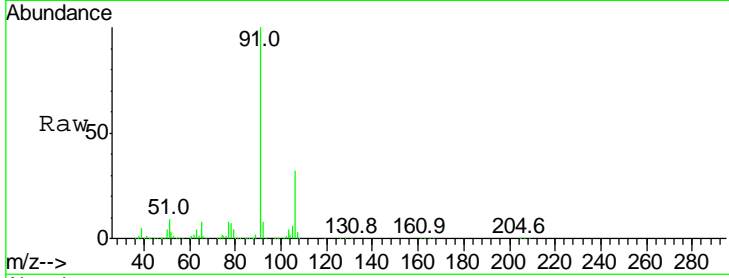




#53
 Ethylbenzene
 Concen: 28.964 ug/L
 RT: 11.73 min Scan# 1612
 Delta R.T. -0.00 min
 Lab File: VW013616.D
 Acq: 18 Oct 2019 10:50

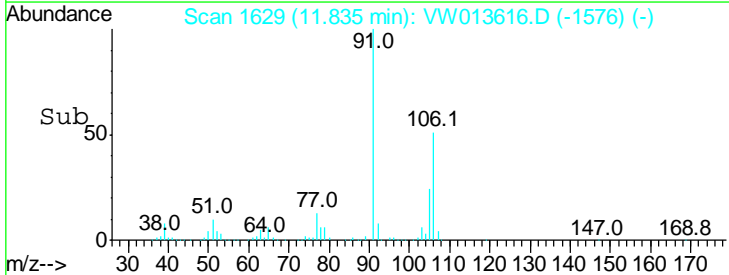
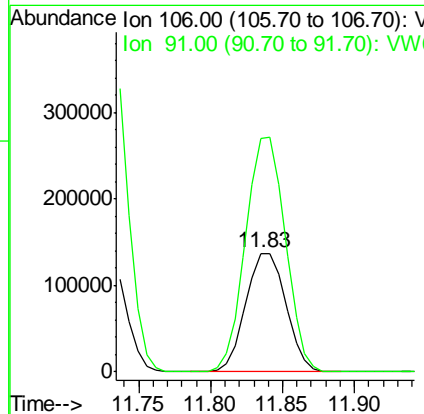
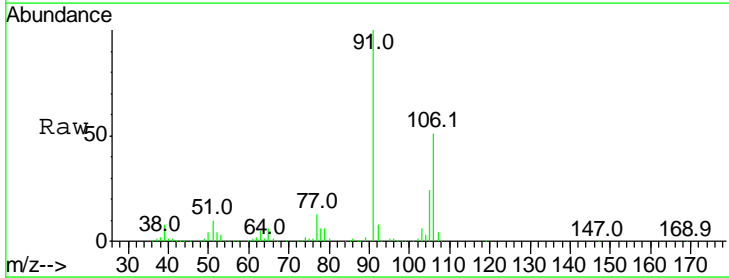
Instrument :
 MSVOA_W
 ClientSampled :
 VSTD02505

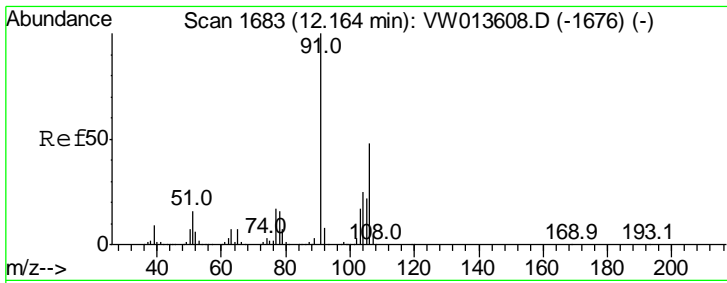
Tgt Ion: 91 Resp: 678763
 Ion Ratio Lower Upper
 91 100
 106 31.8 21.5 39.9



#54
 m,p-Xylene
 Concen: 29.067 ug/L
 RT: 11.83 min Scan# 1629
 Delta R.T. -0.01 min
 Lab File: VW013616.D
 Acq: 18 Oct 2019 10:50

Tgt Ion: 106 Resp: 265728
 Ion Ratio Lower Upper
 106 100
 91 196.7 139.4 258.8

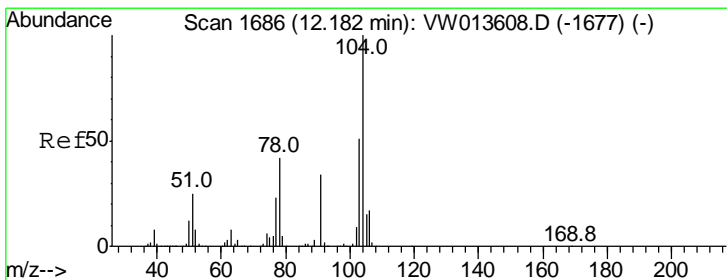
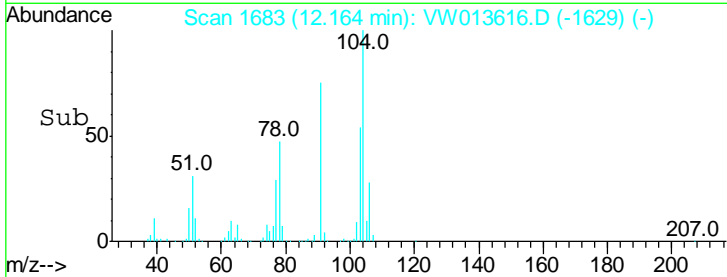
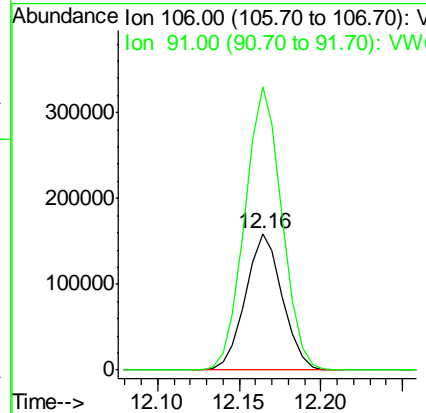
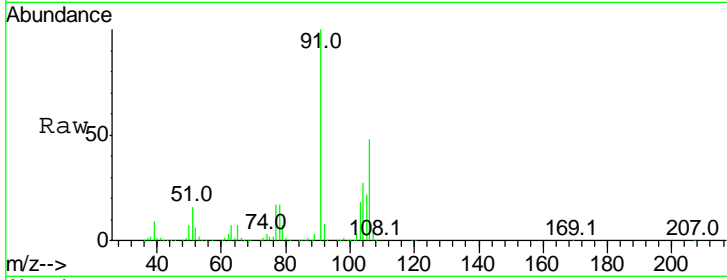




#55
 o-xylene
 Concen: 29.327 ug/L
 RT: 12.16 min Scan# 1683
 Delta R.T. -0.00 min
 Lab File: VW013616.D
 Acq: 18 Oct 2019 10:50

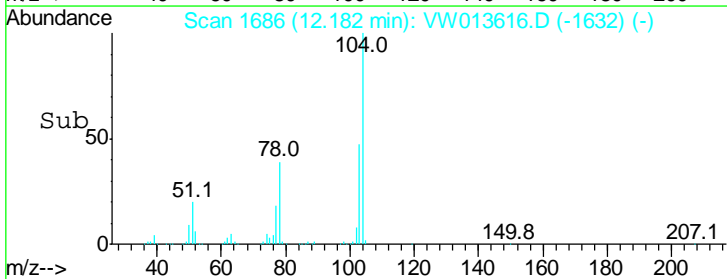
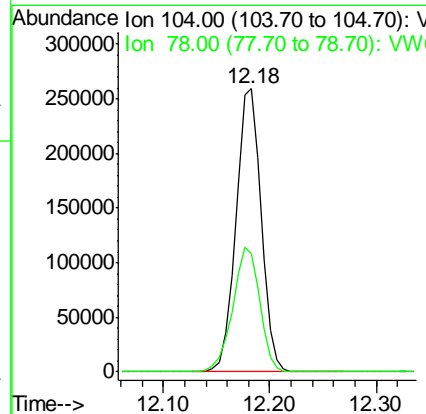
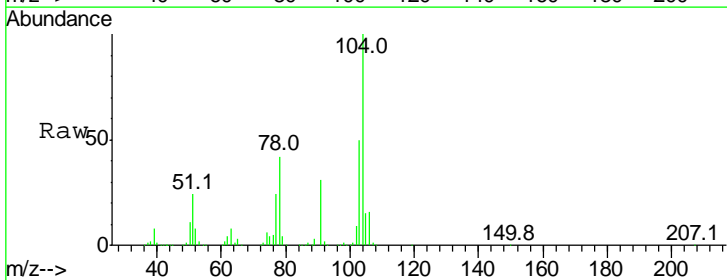
Instrument :
 MSVOA_W
 ClientSampled :
 VSTD02505

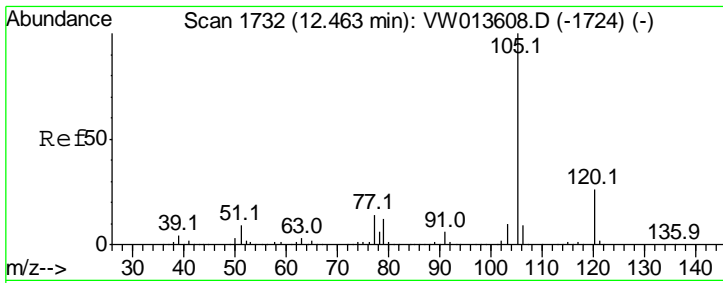
Tgt Ion:106 Resp: 250260
 Ion Ratio Lower Upper
 106 100
 91 206.9 148.4 275.6



#56
 Styrene
 Concen: 29.642 ug/L
 RT: 12.18 min Scan# 1686
 Delta R.T. -0.00 min
 Lab File: VW013616.D
 Acq: 18 Oct 2019 10:50

Tgt Ion:104 Resp: 430787
 Ion Ratio Lower Upper
 104 100
 78 41.9 28.4 52.8

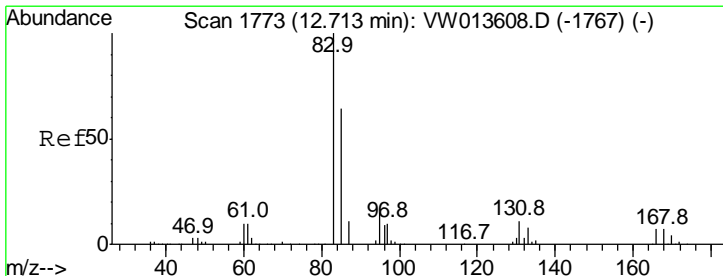
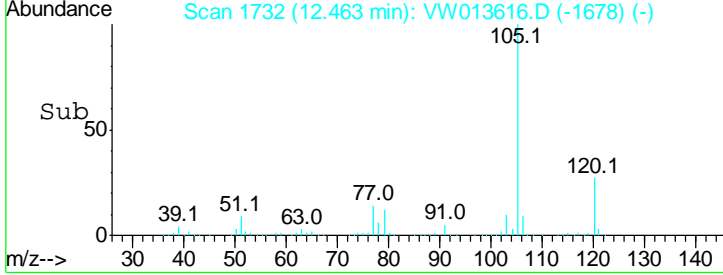
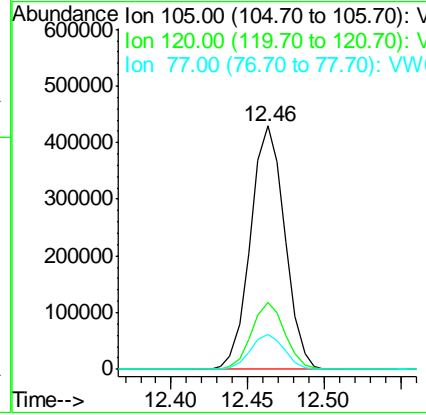
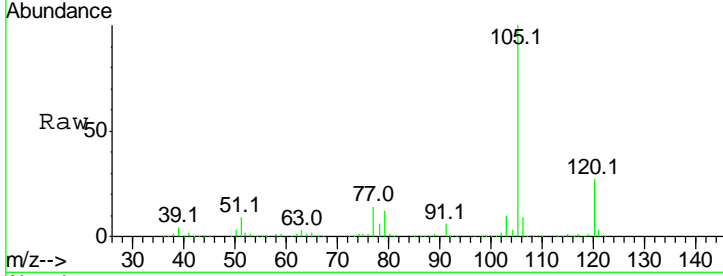




#57
 Isopropylbenzene
 Concen: 28.986 ug/L
 RT: 12.46 min Scan# 1732
 Delta R.T. -0.00 min
 Lab File: VW013616.D
 Acq: 18 Oct 2019 10:50

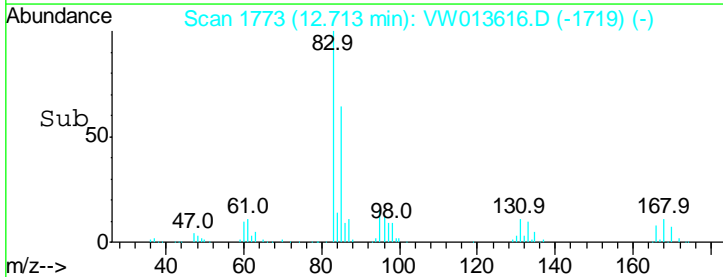
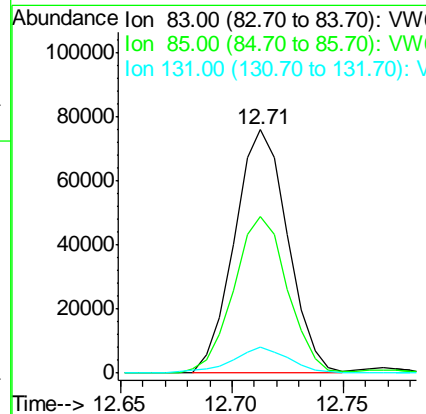
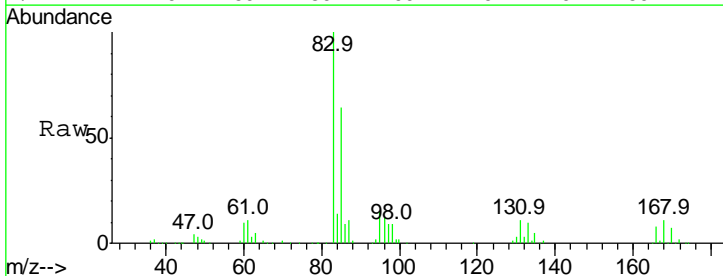
Instrument : MSVOA_W
 ClientSampled : VSTD02505

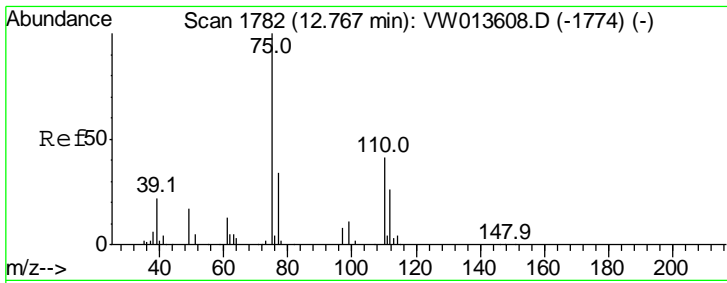
Tgt Ion	Resp	Lower	Upper
105	100		
120	26.8	21.7	32.5
77	14.2	11.8	17.6



#58
 1,1,2,2-Tetrachloroethane
 Concen: 29.893 ug/L
 RT: 12.71 min Scan# 1773
 Delta R.T. -0.00 min
 Lab File: VW013616.D
 Acq: 18 Oct 2019 10:50

Tgt Ion	Resp	Lower	Upper
83	100		
85	64.1	44.7	83.1
131	10.8	7.8	11.6

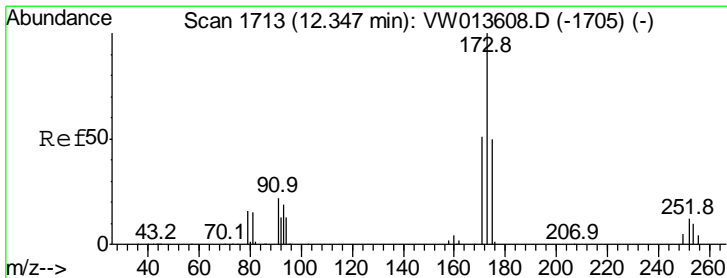
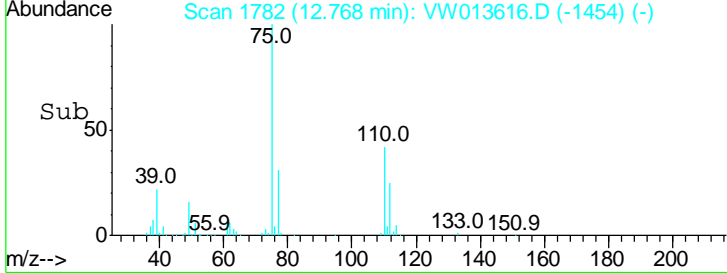
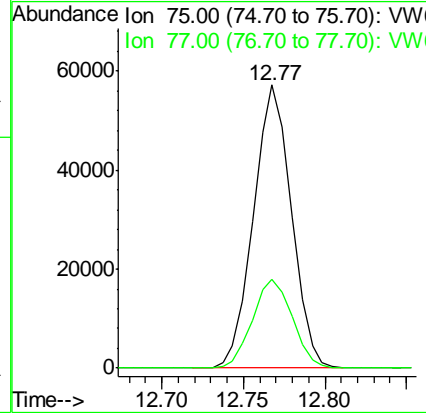
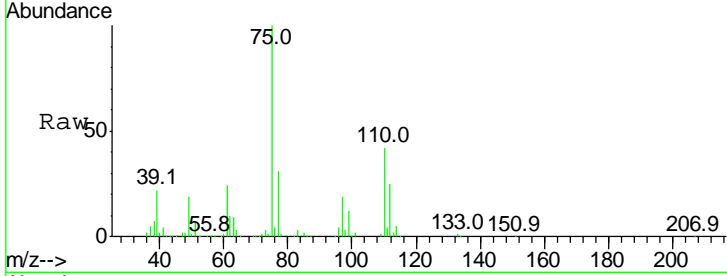




#59
 1,2,3-Trichloropropane
 Concen: 29.315 ug/L
 RT: 12.77 min Scan# 1782
 Delta R.T. -0.00 min
 Lab File: VW013616.D
 Acq: 18 Oct 2019 10:50

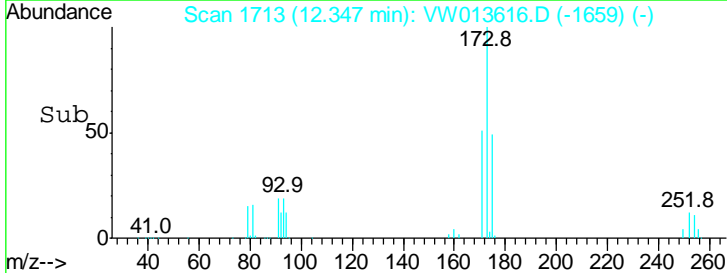
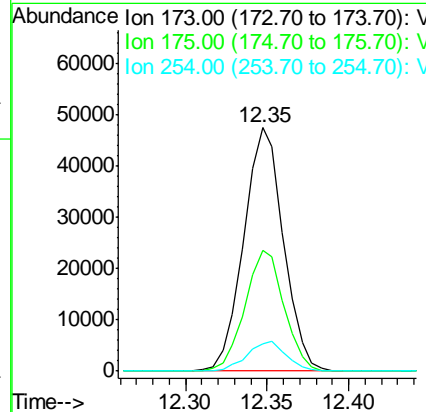
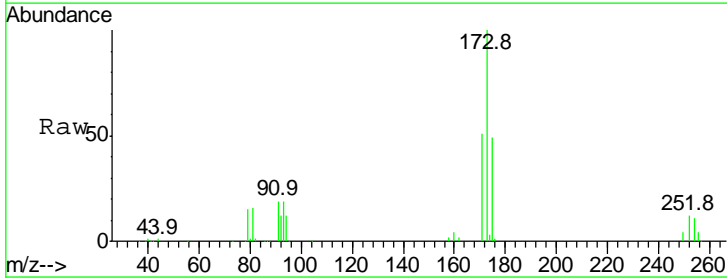
Instrument : MSVOA_W
 ClientSampled : VSTD02505

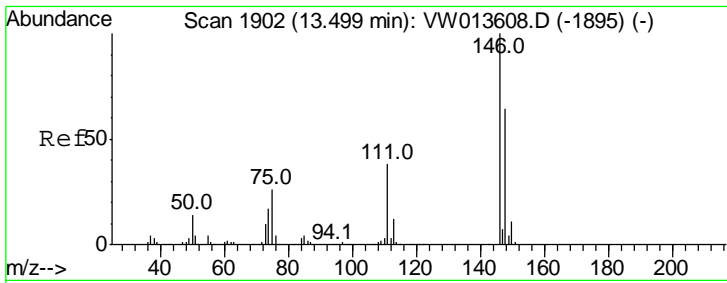
Tgt Ion: 75 Resp: 92386
 Ion Ratio Lower Upper
 75 100
 77 33.0 25.5 38.3



#62
 Bromoform
 Concen: 26.294 ug/L
 RT: 12.35 min Scan# 1713
 Delta R.T. -0.00 min
 Lab File: VW013616.D
 Acq: 18 Oct 2019 10:50

Tgt Ion: 173 Resp: 80396
 Ion Ratio Lower Upper
 173 100
 175 48.9 39.0 58.6
 254 12.0 10.1 15.1

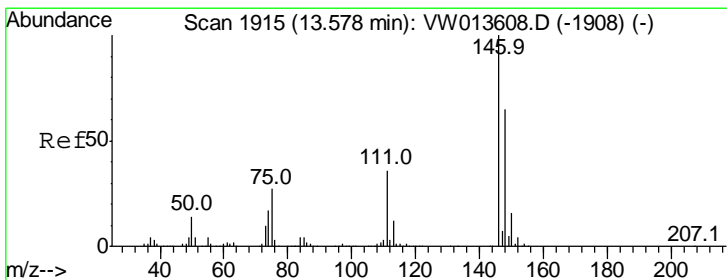
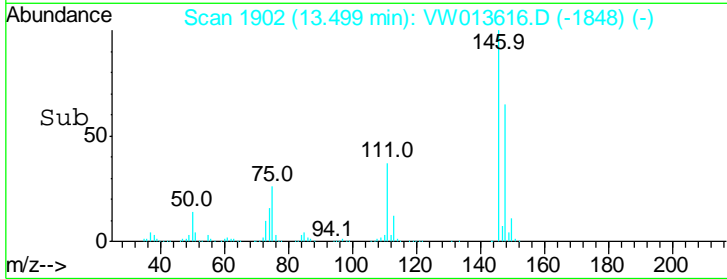
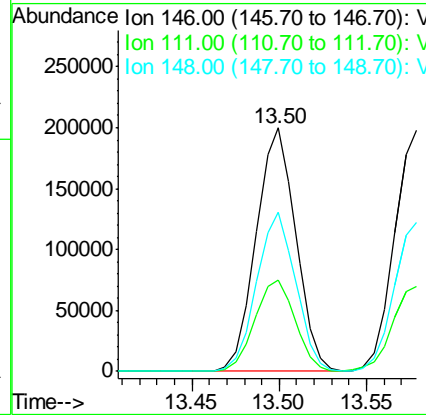
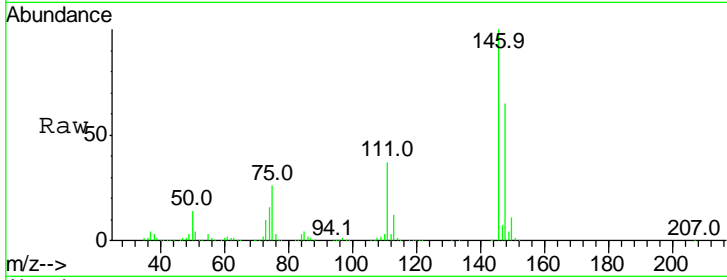




#63
 1,3-Dichlorobenzene
 Concen: 24.719 ug/L
 RT: 13.50 min Scan# 1902
 Delta R.T. -0.00 min
 Lab File: VW013616.D
 Acq: 18 Oct 2019 10:50

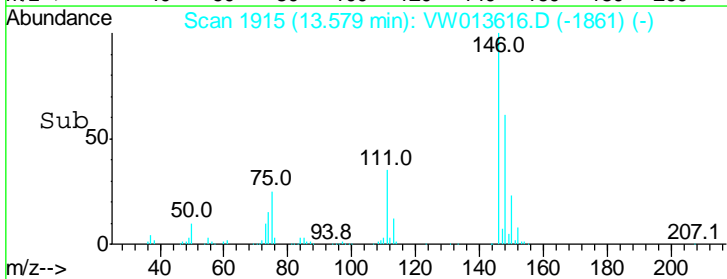
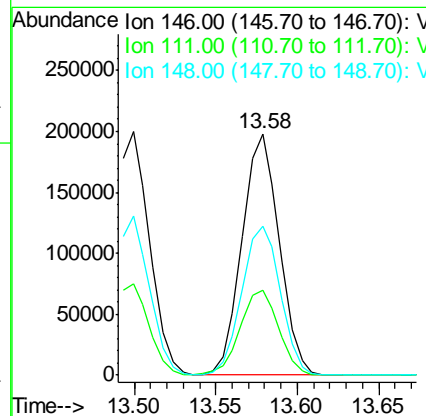
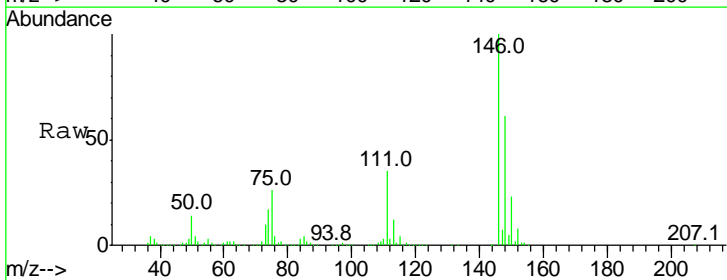
Instrument :
 MSVOA_W
 ClientSampled :
 VSTD02505

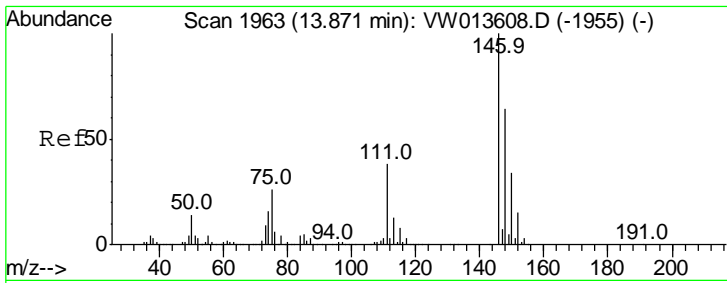
Tgt Ion	Resp	Lower	Upper
146	100		
111	37.3	25.3	46.9
148	65.5	42.8	79.4



#64
 1,4-Dichlorobenzene
 Concen: 24.931 ug/L
 RT: 13.58 min Scan# 1915
 Delta R.T. -0.00 min
 Lab File: VW013616.D
 Acq: 18 Oct 2019 10:50

Tgt Ion	Resp	Lower	Upper
146	100		
111	35.4	25.8	47.8
148	61.4	43.7	81.1

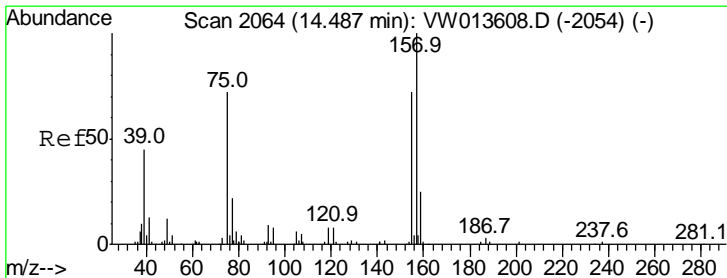
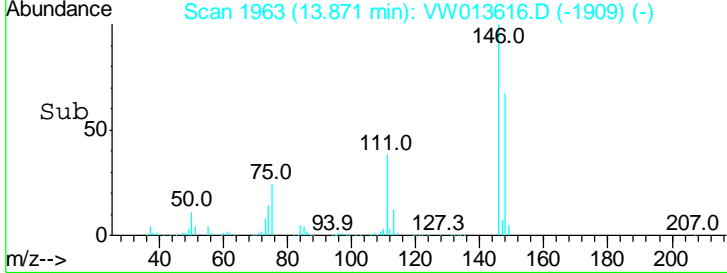
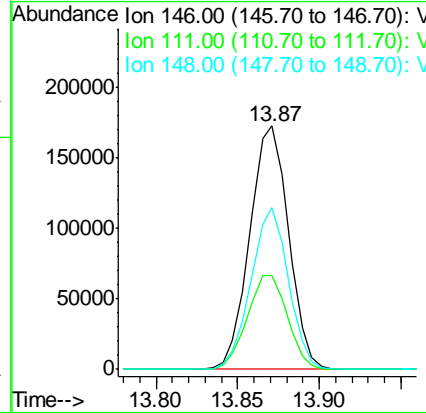
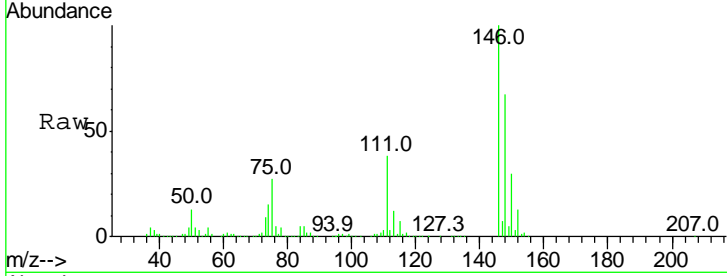




#65
 1,2-Dichlorobenzene
 Concen: 24.970 ug/L
 RT: 13.87 min Scan# 1963
 Delta R.T. -0.00 min
 Lab File: VW013616.D
 Acq: 18 Oct 2019 10:50

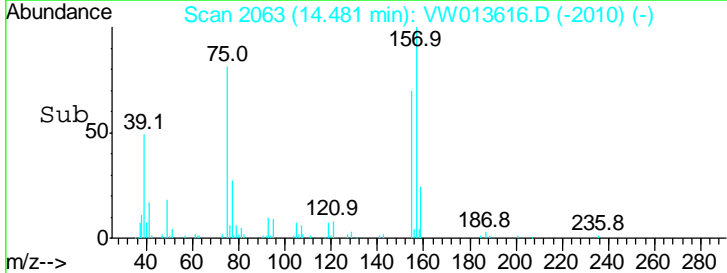
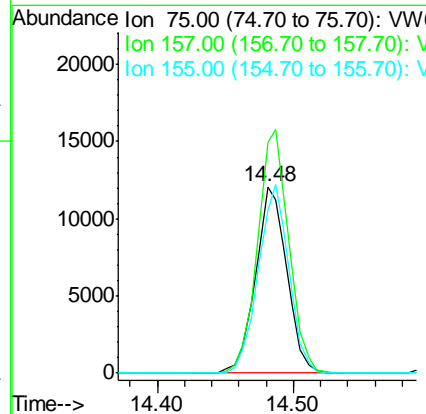
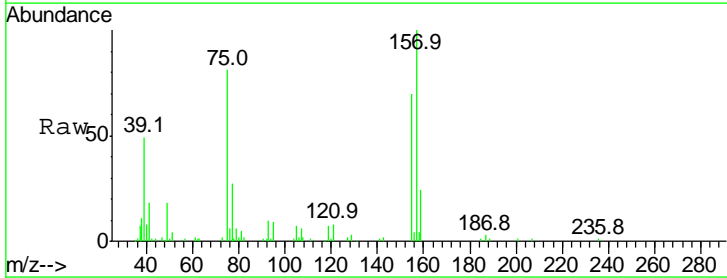
Instrument :
 MSVOA_W
 ClientSampled :
 VSTD02505

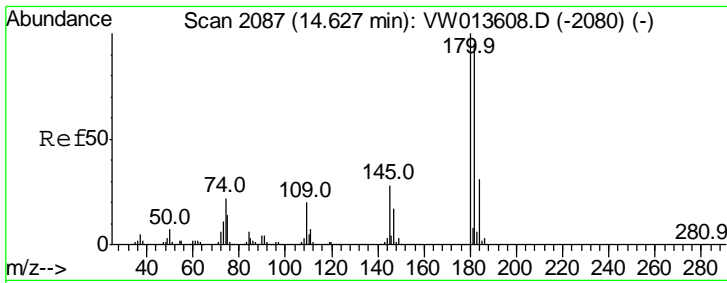
Tgt Ion	Resp	Lower	Upper
146	100		
111	38.4	31.0	46.4
148	66.6	50.3	75.5



#66
 1,2-Dibromo-3-chloropropane
 Concen: 24.536 ug/L
 RT: 14.48 min Scan# 2063
 Delta R.T. -0.01 min
 Lab File: VW013616.D
 Acq: 18 Oct 2019 10:50

Tgt Ion	Resp	Lower	Upper
75	100		
157	124.2	102.0	153.0
155	87.1	77.6	116.4

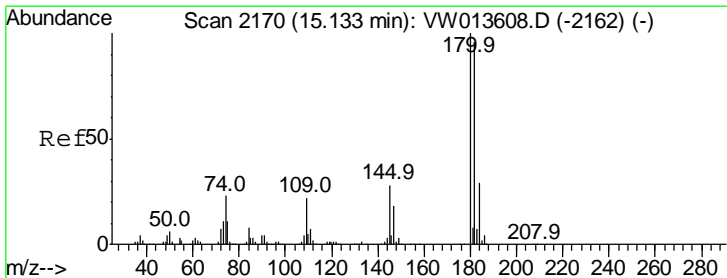
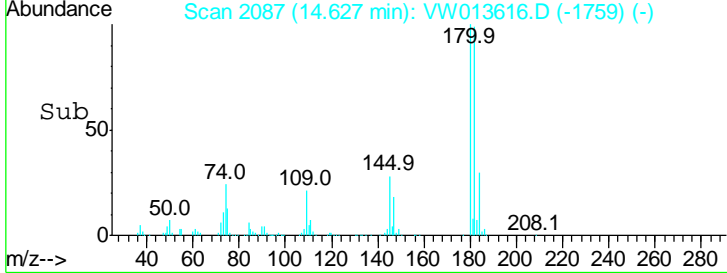
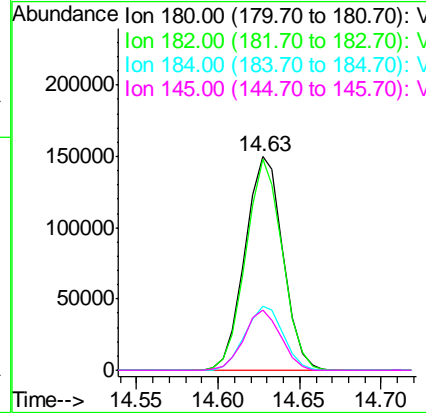
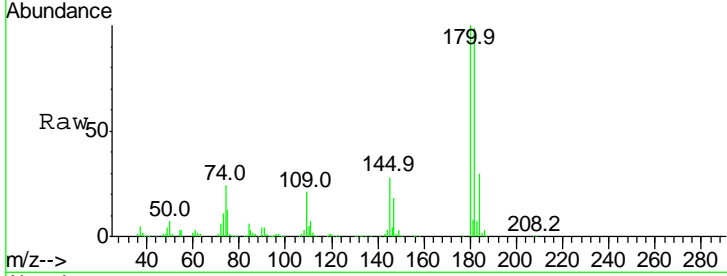




#67
 1,3,5-Trichlorobenzene
 Concen: 25.209 ug/L
 RT: 14.63 min Scan# 2087
 Delta R.T. -0.00 min
 Lab File: VW013616.D
 Acq: 18 Oct 2019 10:50

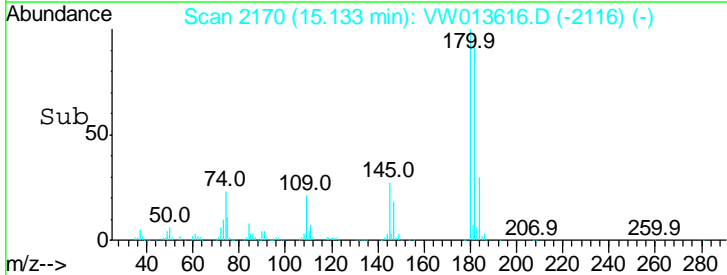
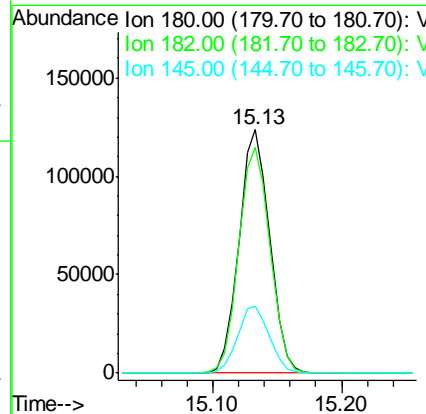
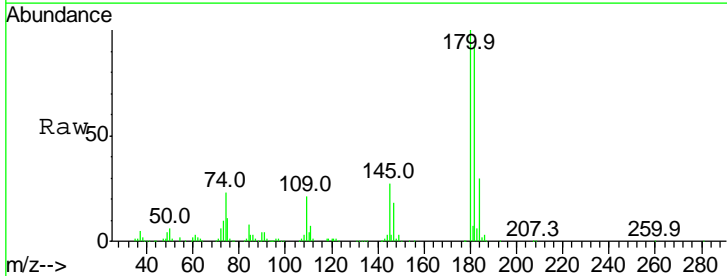
Instrument :
 MSVOA_W
 ClientSampled :
 VSTD02505

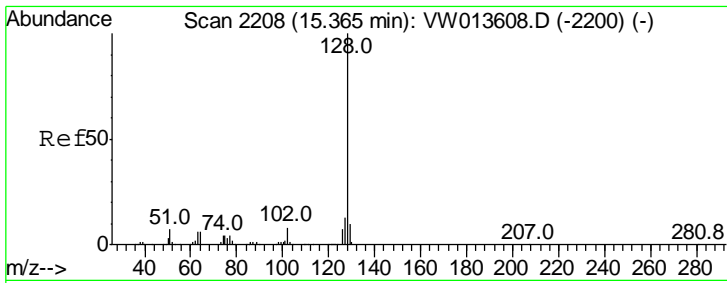
Tgt Ion	Resp	Lower	Upper
180	100		
182	95.3	77.0	115.4
184	30.1	24.7	37.1
145	27.3	22.2	33.2



#68
 1,2,4-trichlorobenzene
 Concen: 25.517 ug/L
 RT: 15.13 min Scan# 2170
 Delta R.T. -0.00 min
 Lab File: VW013616.D
 Acq: 18 Oct 2019 10:50

Tgt Ion	Resp	Lower	Upper
180	100		
182	94.8	78.2	117.2
145	28.3	22.8	34.2

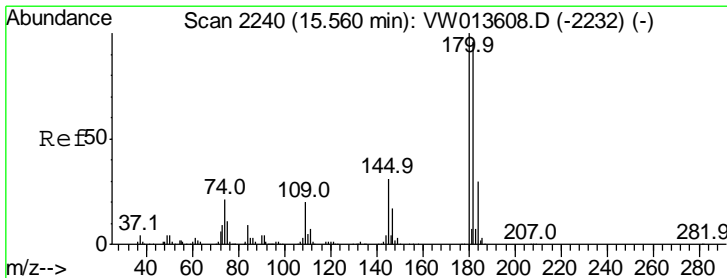
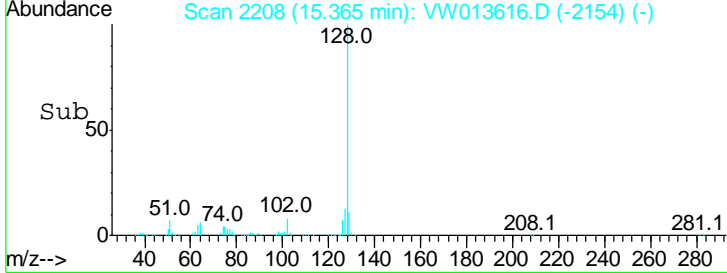
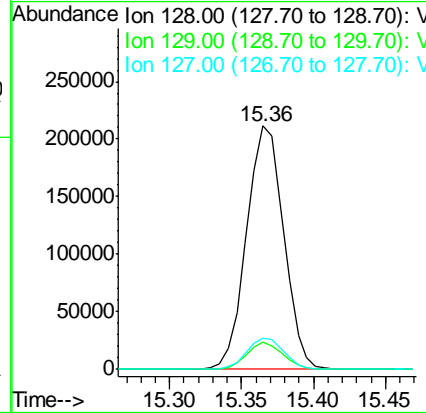
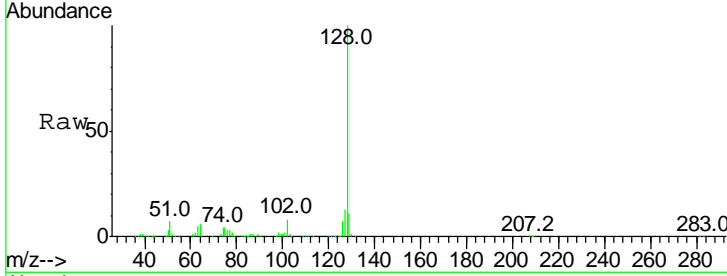




#69
 Naphthalene
 Concen: 25.985 ug/L
 RT: 15.36 min Scan# 2208
 Delta R.T. -0.00 min
 Lab File: VW013616.D
 Acq: 18 Oct 2019 10:50

Instrument :
 MSVOA_W
 ClientSampled :
 VSTD02505

Tgt Ion	Resp	Lower	Upper
128	377164		
129	10.8	8.5	12.7
127	13.1	10.4	15.6



#70
 1,2,3-Trichlorobenzene
 Concen: 25.741 ug/L
 RT: 15.55 min Scan# 2239
 Delta R.T. -0.00 min
 Lab File: VW013616.D
 Acq: 18 Oct 2019 10:50

Tgt Ion	Resp	Lower	Upper
180	182660		
182	96.2	76.0	114.0
145	30.1	23.1	34.7

