

Data File : VW013620.D
 Acq On : 18 Oct 2019 13:16
 Operator : SY/VA
 Sample : VSTDICV025
 Misc : 5.00G/10ML/MSVOA_W/SOIL
 ALS Vial : 1 Sample Multiplier: 1

Instrument :
 MSVOA_W
 ClientSampleId :
 VICV02

Quant Time: Oct 20 17:49:30 2019
 Quant Method : Z:\VOASRV\HPCHEM1\MSVOA_W\METHOD\SOM2WLM101819S.M
 Quant Title : VOC Analysis
 QLast Update : Fri Oct 18 13:08:41 2019
 Response via : Initial Calibration

Internal Standards	R.T.	QIon	Response	Conc	Units	Dev(Min)
1) 1,4-Difluorobenzene	8.84	114	323032	25.00	ug/L	0.00
28) Chlorobenzene-d5	11.63	117	308612	25.00	ug/L	0.00
60) 1,4-Dichlorobenzene-d4	13.56	152	185527	25.00	ug/L	0.00

System Monitoring Compounds

4) Vinyl Chloride-d3	2.35	65	108164	27.29	ug/L	0.00
Spiked Amount	25.000	Range	30 - 150	Recovery	=	109.16%
7) Chloroethane-d5	2.89	69	95693	25.87	ug/L	0.00
Spiked Amount	25.000	Range	30 - 150	Recovery	=	103.48%
10) 1,1-Dichloroethene-d2	4.03	63	224290	25.62	ug/L	0.00
Spiked Amount	25.000	Range	45 - 110	Recovery	=	102.48%
20) 2-Butanone-d5	7.07	46	84139	59.36	ug/L	0.00
Spiked Amount	50.000	Range	20 - 135	Recovery	=	118.72%
24) Chloroform-d	7.65	84	238122	26.34	ug/L	0.00
Spiked Amount	25.000	Range	40 - 150	Recovery	=	105.36%
26) 1,2-Dichloroethane-d4	8.30	65	123879	26.21	ug/L	0.00
Spiked Amount	25.000	Range	70 - 130	Recovery	=	104.84%
29) Benzene-d6	8.27	84	500095	26.97	ug/L	0.00
Spiked Amount	25.000	Range	20 - 135	Recovery	=	107.88%
33) 1,2-Dichloropropane-d6	9.27	67	147929	26.71	ug/L	0.00
Spiked Amount	25.000	Range	70 - 120	Recovery	=	106.84%
37) Toluene-d8	10.32	98	459891	26.89	ug/L	0.00
Spiked Amount	25.000	Range	30 - 130	Recovery	=	107.56%
38) trans-1,3-Dichloropropene-	10.57	79	66613	26.67	ug/L	0.00
Spiked Amount	25.000	Range	30 - 135	Recovery	=	106.68%
39) 2-Hexanone-d5	10.92	63	66627	62.94	ug/L	0.00
Spiked Amount	50.000	Range	20 - 135	Recovery	=	125.88%
48) 1,1,2,2-Tetrachloroethane-	12.69	84	131476	28.99	ug/L	0.00
Spiked Amount	25.000	Range	45 - 120	Recovery	=	115.96%
61) 1,2-Dichlorobenzene-d4	13.85	152	166462	25.39	ug/L	0.00
Spiked Amount	25.000	Range	75 - 120	Recovery	=	101.56%

Target Compounds

Target Compounds	R.T.	QIon	Response	Conc	Units	Qvalue
2) Dichlorodifluoromethane	2.01	85	78610	21.636	ug/L	99
3) Chloromethane	2.21	50	87481	22.242	ug/L	97
5) Vinyl chloride	2.37	62	125641	25.562	ug/L	100
6) Bromomethane	2.78	94	82518	23.234	ug/L	98
8) Chloroethane	2.92	64	76634	23.072	ug/L	97
9) Trichlorofluoromethane	3.26	101	72779	21.969	ug/L	97
11) 1,1,2-Trichloro-1,2,2-trif	4.07	101	124727	23.910	ug/L	99
12) 1,1-Dichloroethene	4.04	96	124464	24.244	ug/L	87
13) Acetone	4.12	43	69113	43.929	ug/L	96
14) Carbon disulfide	4.38	76	367308	25.004	ug/L	99
15) Methyl Acetate	4.67	43	67984	26.446	ug/L	100
16) Methylene chloride	4.92	84	133743	21.621	ug/L	99
17) Methyl tert-butyl Ether	5.42	73	174182	24.521	ug/L #	91
18) trans-1,2-Dichloroethene	5.42	96	137125	24.162	ug/L	99
19) 1,1-Dichloroethane	6.21	63	232615	24.215	ug/L	97
21) 2-Butanone	7.16	43	98404	49.261	ug/L	100
22) cis-1,2-Dichloroethene	7.17	96	146889	24.113	ug/L	96

Data File : VW013620.D
 Acq On : 18 Oct 2019 13:16
 Operator : SY/VA
 Sample : VSTDICV025
 Misc : 5.00G/10ML/MSVOA_W/SOIL
 ALS Vial : 1 Sample Multiplier: 1

Instrument :
 MSVOA_W
 ClientSampleId :
 VICV02

Quant Time: Oct 20 17:49:30 2019
 Quant Method : Z:\VOASRV\HPCHEM1\MSVOA_W\METHOD\SOM2WLM101819S.M
 Quant Title : VOC Analysis
 QLast Update : Fri Oct 18 13:08:41 2019
 Response via : Initial Calibration

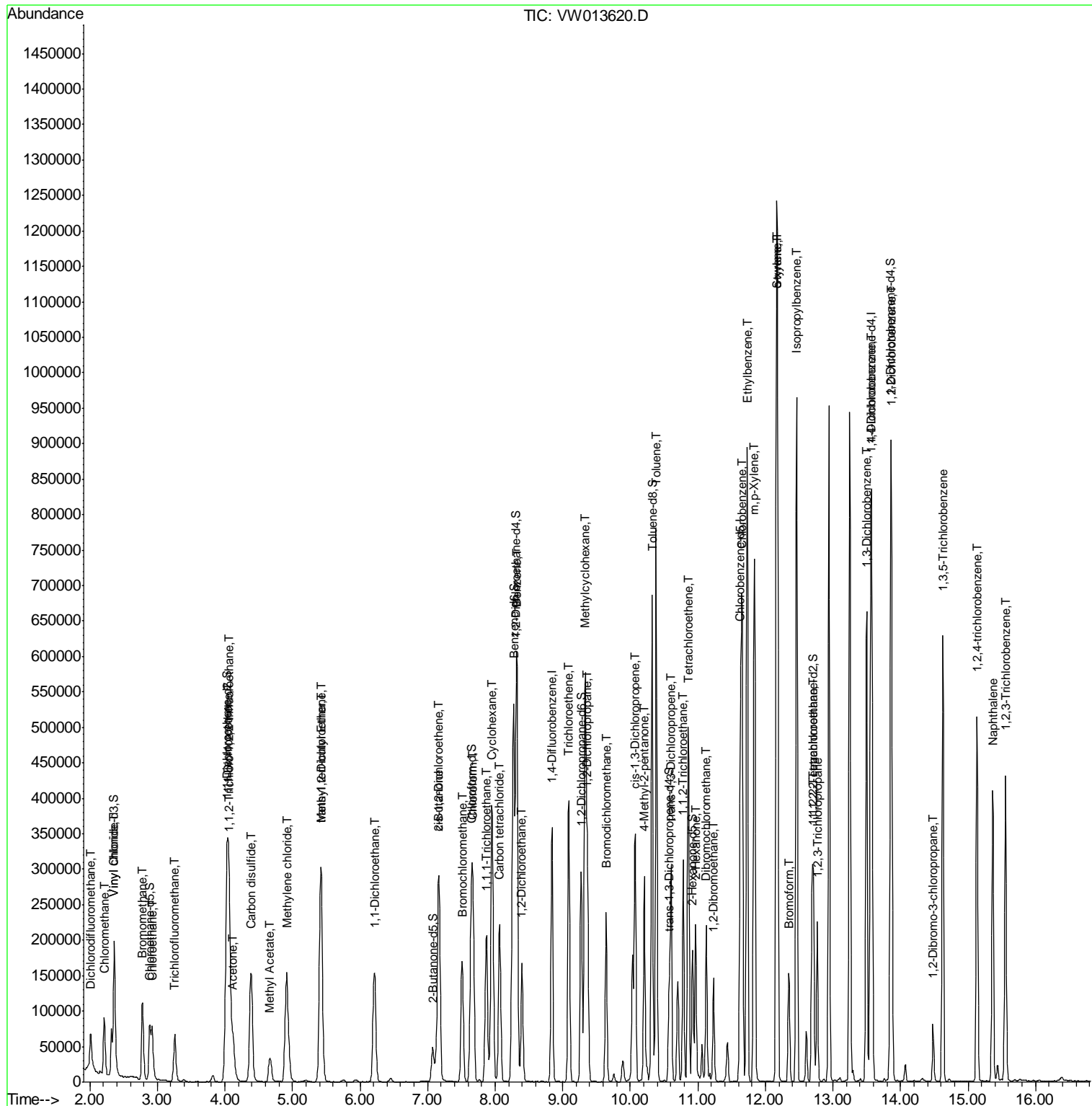
Internal Standards	R.T.	QIon	Response	Conc	Units	Dev(Min)
23) Bromochloromethane	7.51	128	66666	24.213	ug/L	95
25) Chloroform	7.67	83	228636	23.694	ug/L	100
27) 1,2-Dichloroethane	8.40	62	146526	23.692	ug/L	100
30) Cyclohexane	7.95	56	225298	24.919	ug/L	100
31) 1,1,1-Trichloroethane	7.87	97	175652	24.403	ug/L	99
32) Carbon tetrachloride	8.07	117	171524	24.472	ug/L	98
34) Benzene	8.32	78	543563	24.548	ug/L	100
35) Trichloroethene	9.09	95	140426	24.717	ug/L	99
36) Methylcyclohexane	9.34	83	244918	24.458	ug/L	99
40) 1,2-Dichloropropane	9.37	63	131354	24.261	ug/L	100
41) Bromodichloromethane	9.64	83	164313	24.768	ug/L	99
42) cis-1,3-Dichloropropene	10.07	75	209482	24.506	ug/L	99
43) 4-Methyl-2-pentanone	10.21	43	189712	51.358	ug/L	100
44) Toluene	10.38	91	591671	24.870	ug/L	96
45) trans-1,3-Dichloropropene	10.60	75	170497	24.710	ug/L	100
46) 1,1,2-Trichloroethane	10.79	97	101666	24.347	ug/L	97
47) Tetrachloroethene	10.86	164	127220	24.463	ug/L	98
49) 2-Hexanone	10.97	43	141374	53.947	ug/L	98
50) Dibromochloromethane	11.13	129	121278	24.610	ug/L	94
51) 1,2-Dibromoethane	11.23	107	102178	25.164	ug/L	99
52) Chlorobenzene	11.66	112	364883	23.971	ug/L	98
53) Ethylbenzene	11.73	91	647496	24.633	ug/L	99
54) m,p-Xylene	11.83	106	251025	24.713	ug/L	99
55) o-xylene	12.16	106	235749	24.457	ug/L	99
56) Styrene	12.18	104	412265	25.001	ug/L	99
57) Isopropylbenzene	12.46	105	636252	24.608	ug/L	100
58) 1,1,2,2-Tetrachloroethane	12.71	83	125177	25.577	ug/L	98
59) 1,2,3-Trichloropropane	12.77	75	94189	25.808	ug/L	99
62) Bromoform	12.35	173	77862	24.489	ug/L	100
63) 1,3-Dichlorobenzene	13.50	146	298519	23.713	ug/L	99
64) 1,4-Dichlorobenzene	13.58	146	294292	23.264	ug/L	98
65) 1,2-Dichlorobenzene	13.87	146	269628	23.639	ug/L	97
66) 1,2-Dibromo-3-chloropropan	14.48	75	20223	25.795	ug/L	97
67) 1,3,5-Trichlorobenzene	14.63	180	213328	22.794	ug/L	99
68) 1,2,4-trichlorobenzene	15.13	180	182062	22.915	ug/L	99
69) Naphthalene	15.36	128	363449	25.245	ug/L	99
70) 1,2,3-Trichlorobenzene	15.55	180	165912	23.318	ug/L	99

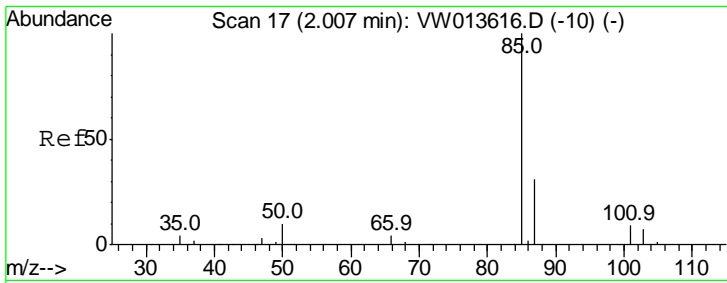
(#) = qualifier out of range (m) = manual integration (+) = signals summed

Data File : VW013620.D
Acq On : 18 Oct 2019 13:16
Operator : SY/VA
Sample : VSTDICV025
Misc : 5.00G/10ML/MSVOA_W/SOIL
ALS Vial : 1 Sample Multiplier: 1

Instrument :
MSVOA_W
Client Sampled :
VICV02

Quant Time: Oct 20 17:49:30 2019
Quant Method : Z:\VOASRV\HPCHEM1\MSVOA_W\METHOD\SOM2WLM101819S.M
Quant Title : VOC Analysis
QLast Update : Fri Oct 18 13:08:41 2019
Response via : Initial Calibration

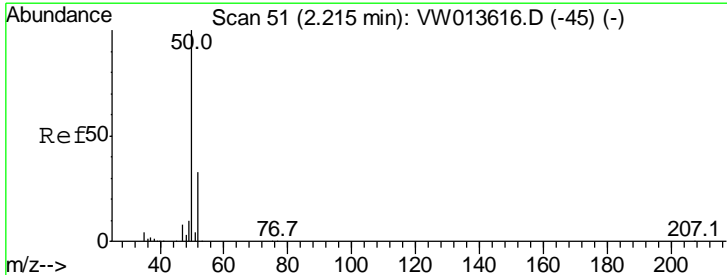
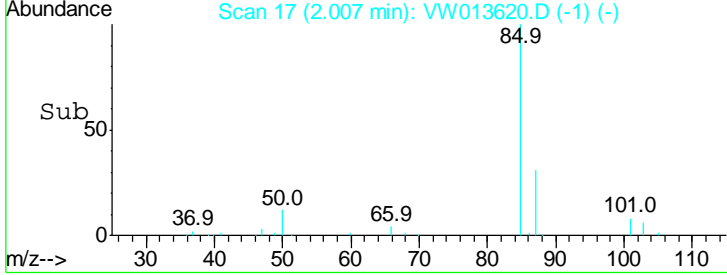
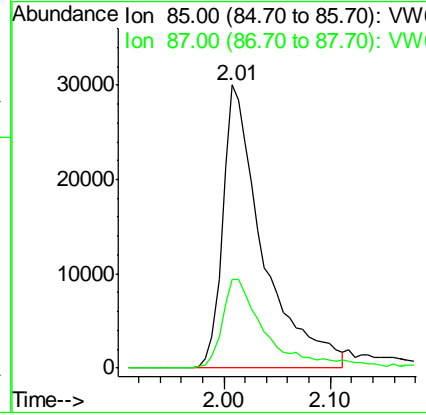
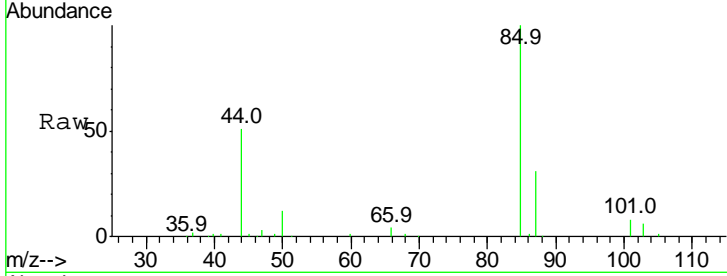




#2
 Dichlorodifluoromethane
 Concen: 21.636 ug/L
 RT: 2.01 min Scan# 17
 Delta R.T. -0.00 min
 Lab File: VW013620.D
 Acq: 18 Oct 2019 13:16

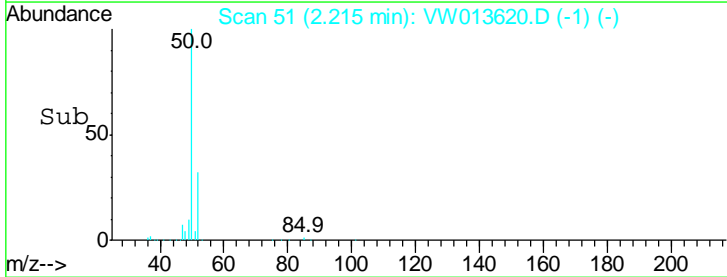
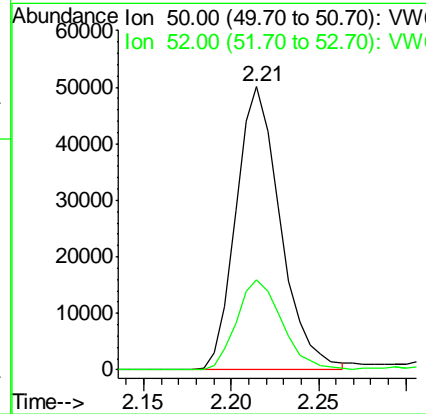
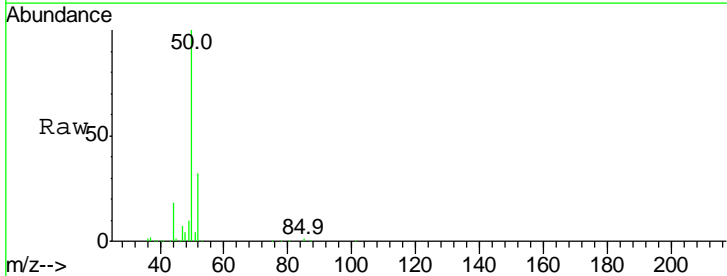
Instrument :
 MSVOA_W
ClientSampled :
 VICV02

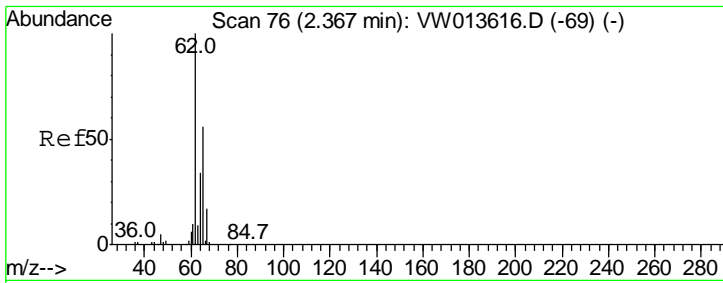
Tgt Ion: 85 Resp: 78610
 Ion Ratio Lower Upper
 85 100
 87 29.1 20.2 37.4



#3
 Chloromethane
 Concen: 22.242 ug/L
 RT: 2.21 min Scan# 51
 Delta R.T. -0.00 min
 Lab File: VW013620.D
 Acq: 18 Oct 2019 13:16

Tgt Ion: 50 Resp: 87481
 Ion Ratio Lower Upper
 50 100
 52 31.8 23.3 43.3

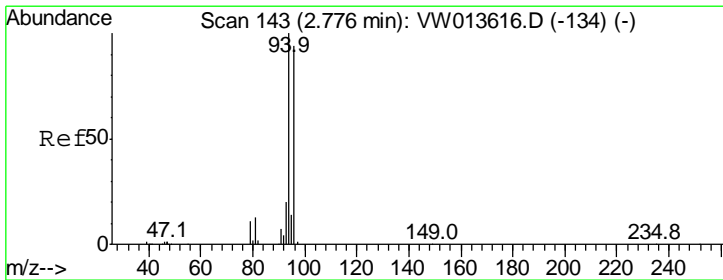
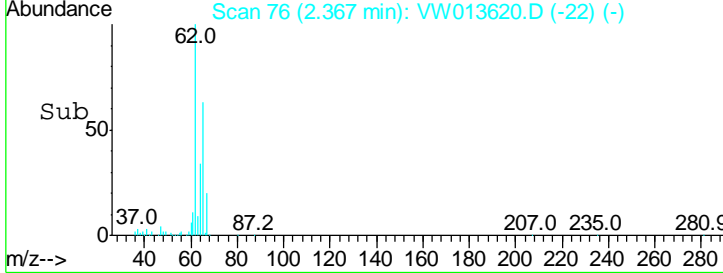
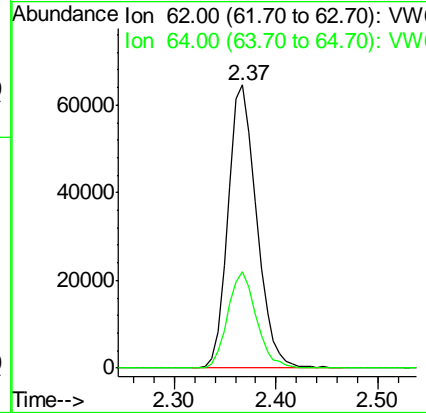
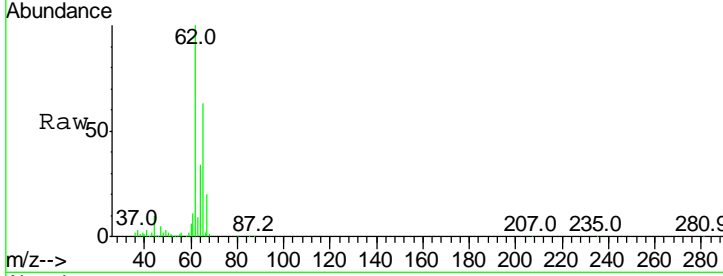




#5
 Vinyl chloride
 Concen: 25.562 ug/L
 RT: 2.37 min Scan# 76
 Delta R.T. -0.00 min
 Lab File: VW013620.D
 Acq: 18 Oct 2019 13:16

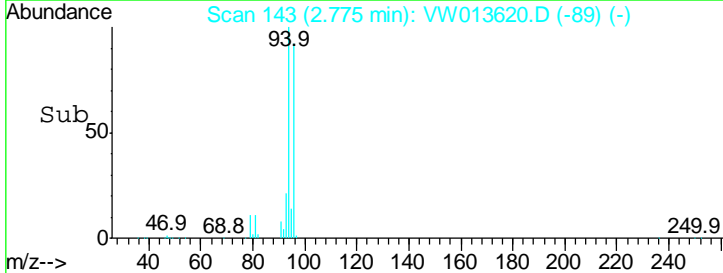
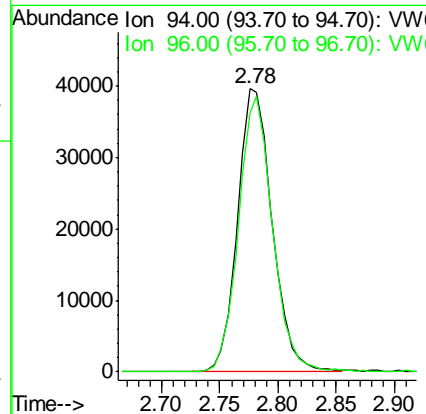
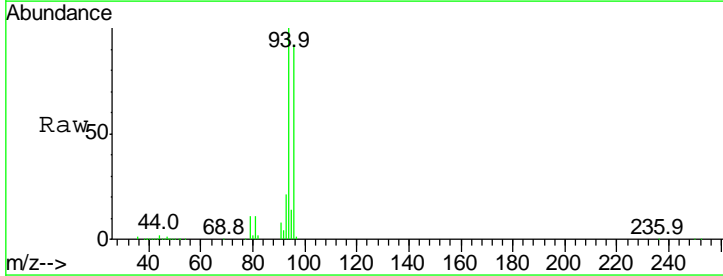
Instrument :
 MSVOA_W
 ClientSampled :
 VICV02

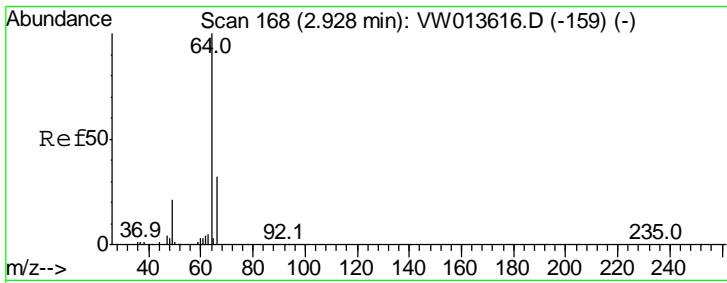
Tgt Ion: 62 Resp: 125641
 Ion Ratio Lower Upper
 62 100
 64 34.3 23.9 44.5



#6
 Bromomethane
 Concen: 23.234 ug/L
 RT: 2.78 min Scan# 143
 Delta R.T. -0.00 min
 Lab File: VW013620.D
 Acq: 18 Oct 2019 13:16

Tgt Ion: 94 Resp: 82518
 Ion Ratio Lower Upper
 94 100
 96 94.9 9.3 176.9

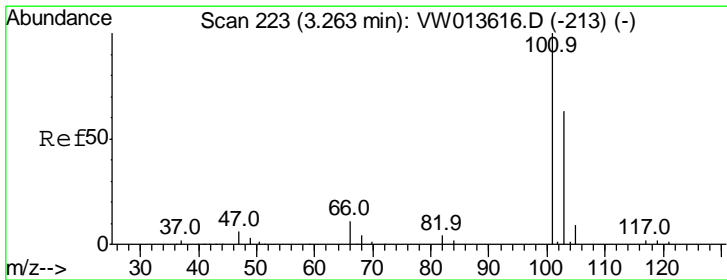
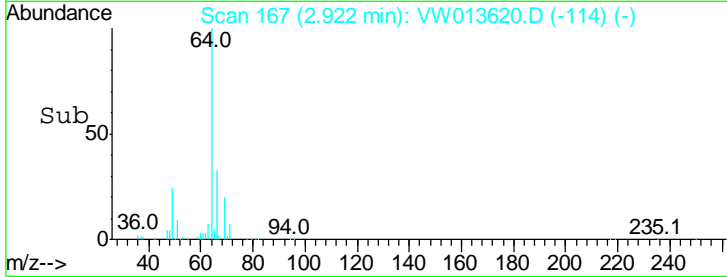
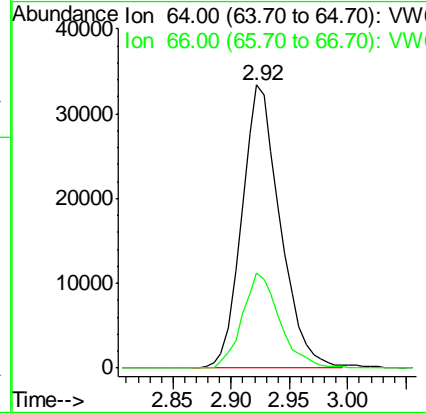
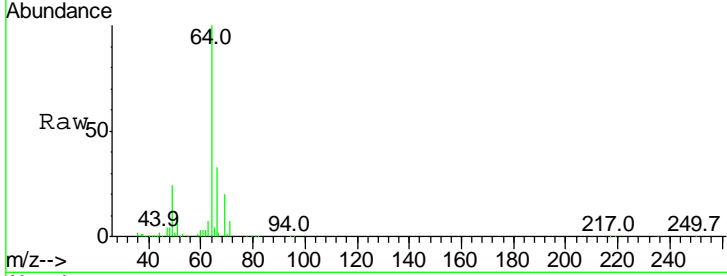




#8
 Chloroethane
 Concen: 23.072 ug/L
 RT: 2.92 min Scan# 167
 Delta R.T. -0.01 min
 Lab File: VW013620.D
 Acq: 18 Oct 2019 13:16

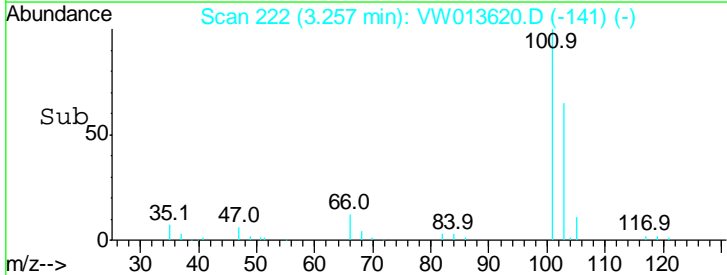
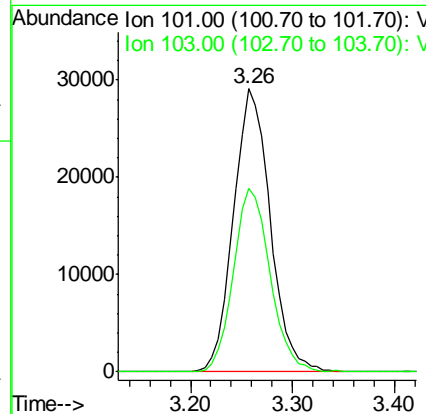
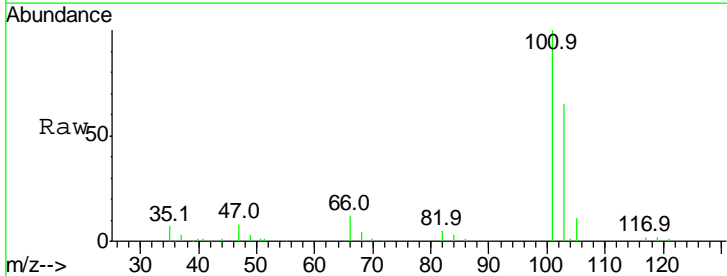
Instrument :
 MSVOA_W
 ClientSampled :
 VICV02

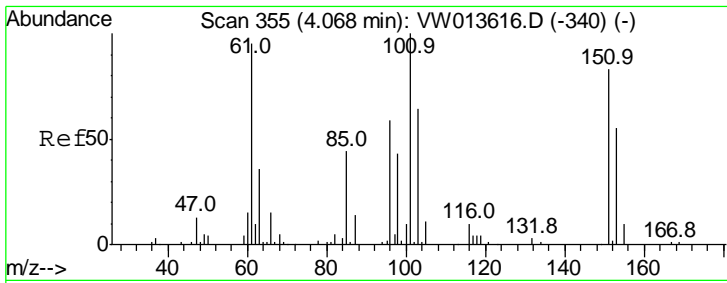
Tgt Ion: 64 Resp: 76634
 Ion Ratio Lower Upper
 64 100
 66 33.5 22.2 41.2



#9
 Trichlorofluoromethane
 Concen: 21.969 ug/L
 RT: 3.26 min Scan# 222
 Delta R.T. -0.01 min
 Lab File: VW013620.D
 Acq: 18 Oct 2019 13:16

Tgt Ion: 101 Resp: 72779
 Ion Ratio Lower Upper
 101 100
 103 64.4 46.5 86.5

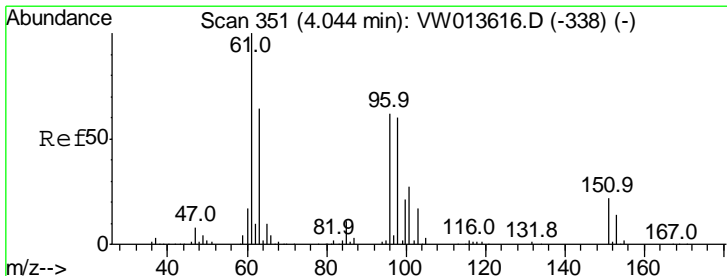
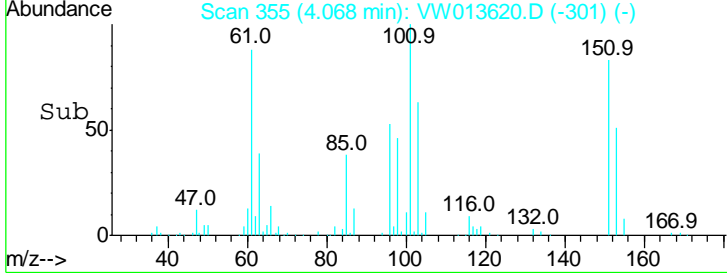
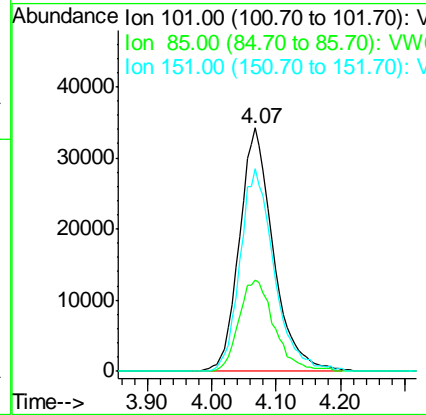
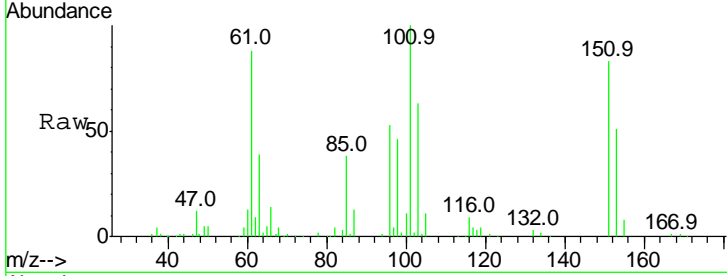




#11
 1,1,2-Trichloro-1,2,2-trifluoroethane
 Concen: 23.910 ug/L
 RT: 4.07 min Scan# 355
 Delta R.T. -0.00 min
 Lab File: VW013620.D
 Acq: 18 Oct 2019 13:16

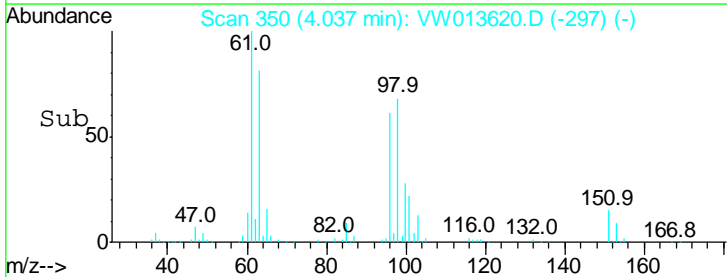
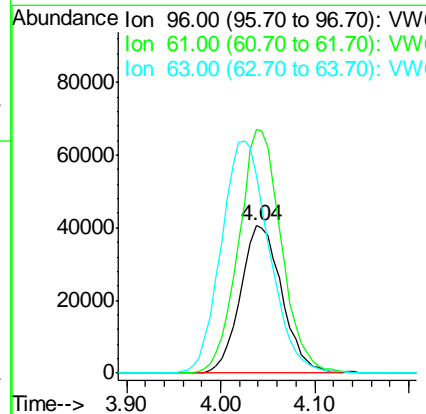
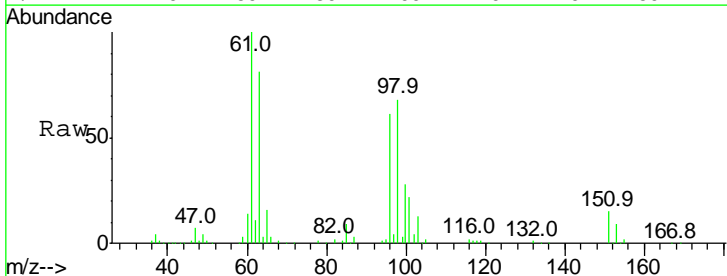
Instrument :
 MSVOA_W
ClientSampled :
 VICV02

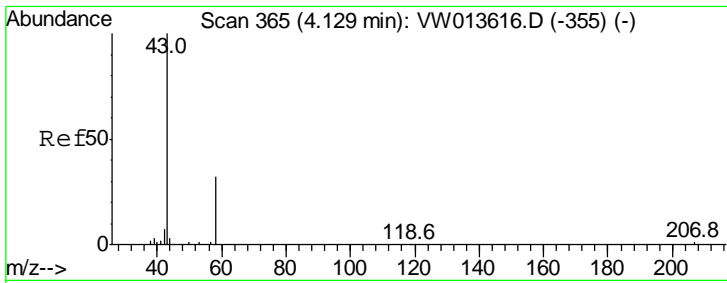
Tgt Ion	Resp	Lower	Upper
101	124727		
101	100		
85	38.4	32.0	48.0
151	82.9	66.9	100.3



#12
 1,1-Dichloroethene
 Concen: 24.244 ug/L
 RT: 4.04 min Scan# 350
 Delta R.T. -0.01 min
 Lab File: VW013620.D
 Acq: 18 Oct 2019 13:16

Tgt Ion	Resp	Lower	Upper
96	124464		
96	100		
61	165.2	112.7	209.3
63	133.8	72.8	135.2

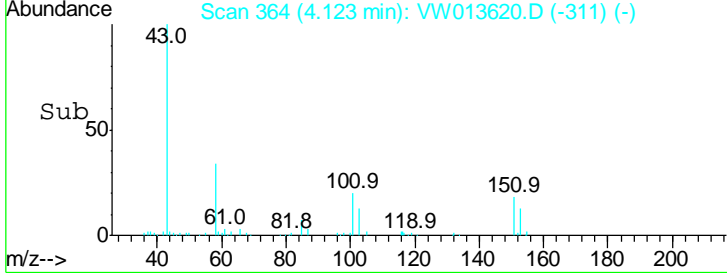
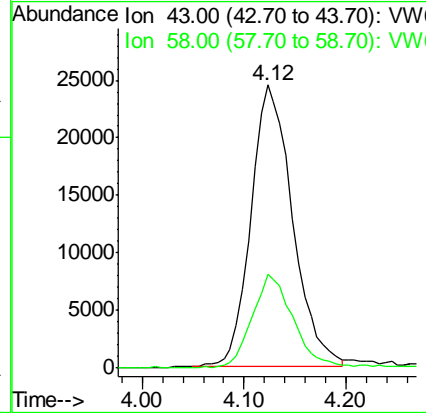
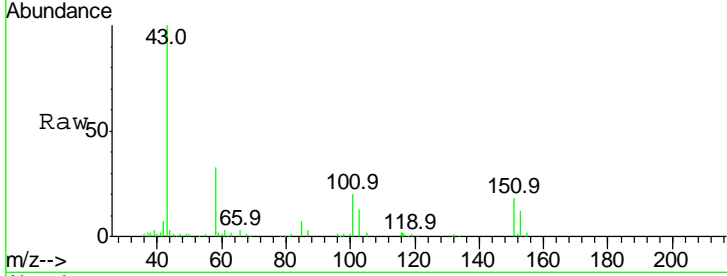




#13
 Acetone
 Concen: 43.929 ug/L
 RT: 4.12 min Scan# 364
 Delta R.T. -0.01 min
 Lab File: VW013620.D
 Acq: 18 Oct 2019 13:16

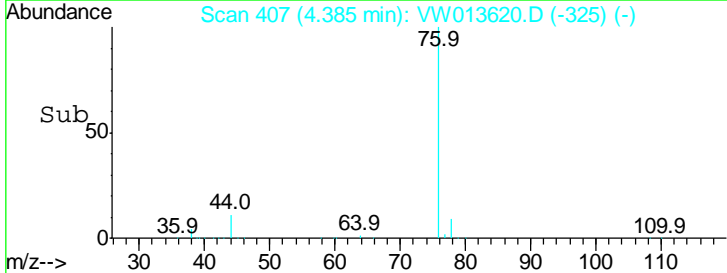
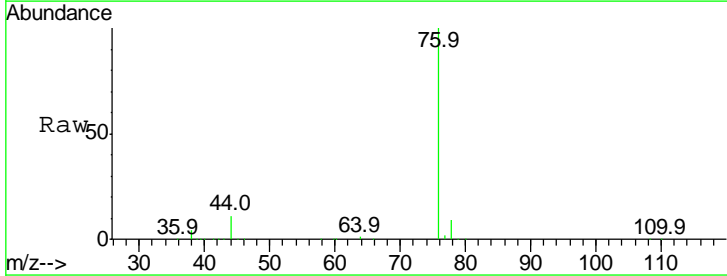
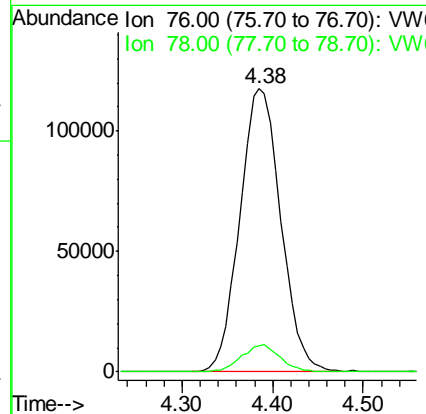
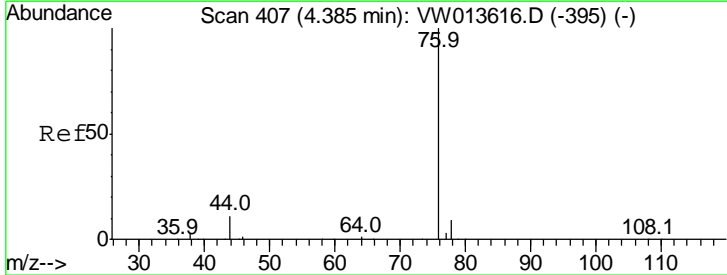
Instrument :
 MSVOA_W
ClientSampled :
 VICV02

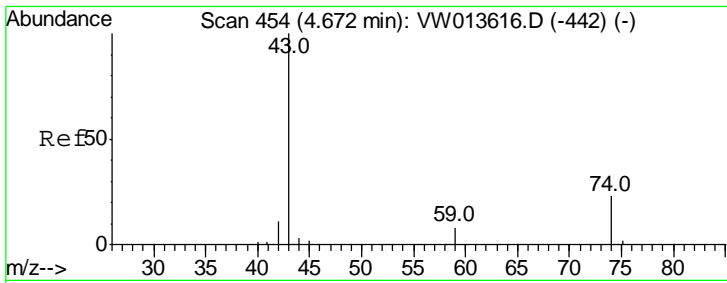
Tgt Ion	Resp	Lower	Upper
43	100		
58	33.0	0.0	70.4



#14
 Carbon disulfide
 Concen: 25.004 ug/L
 RT: 4.38 min Scan# 407
 Delta R.T. -0.00 min
 Lab File: VW013620.D
 Acq: 18 Oct 2019 13:16

Tgt Ion	Resp	Lower	Upper
76	100		
78	9.2	7.1	10.7

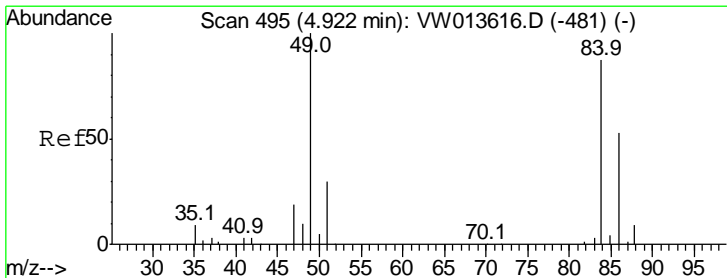
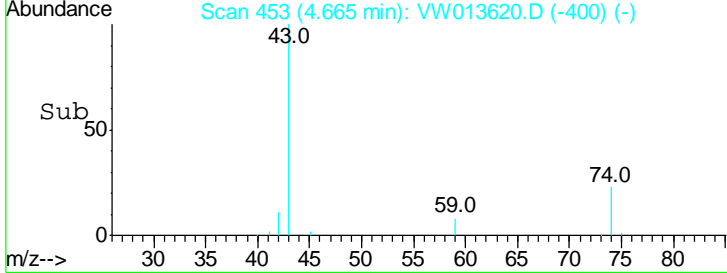
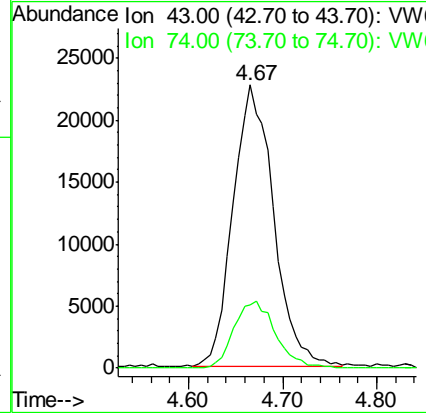
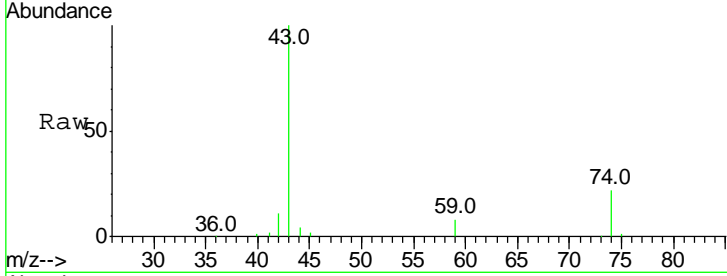




#15
 Methyl Acetate
 Concen: 26.446 ug/L
 RT: 4.67 min Scan# 453
 Delta R.T. -0.01 min
 Lab File: VW013620.D
 Acq: 18 Oct 2019 13:16

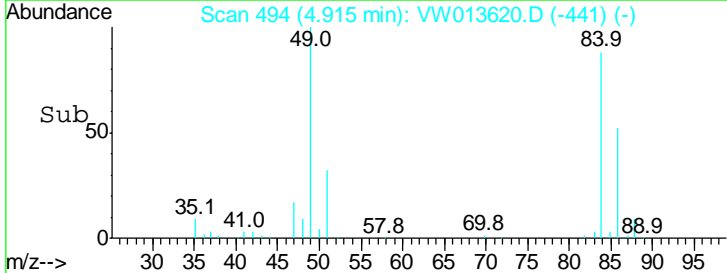
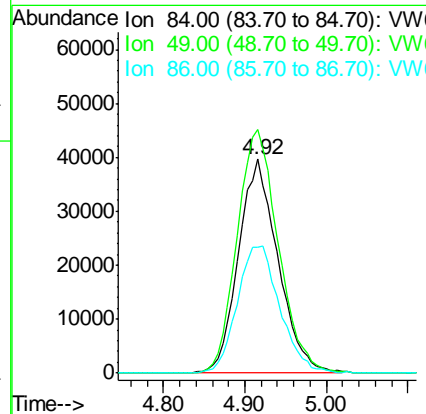
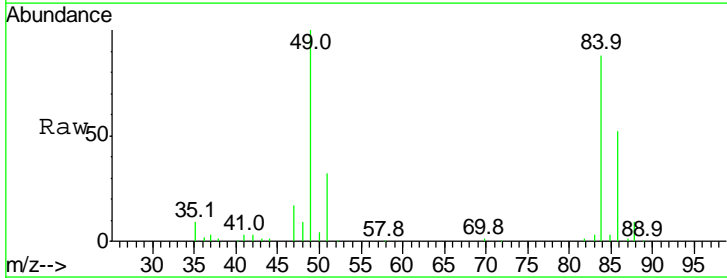
Instrument : MSVOA_W
 ClientSampled : VICV02

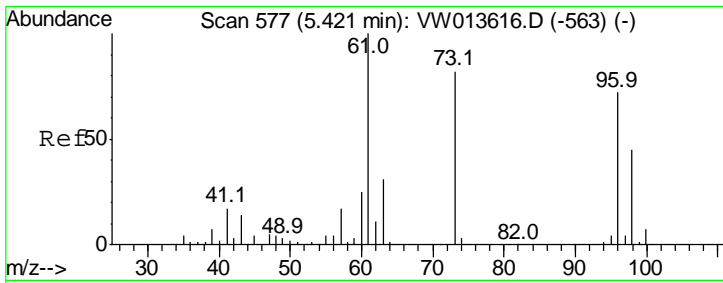
Tgt Ion	Resp	Lower	Upper
43	67984		
74	24.2	19.2	28.8



#16
 Methylene chloride
 Concen: 21.621 ug/L
 RT: 4.92 min Scan# 494
 Delta R.T. -0.01 min
 Lab File: VW013620.D
 Acq: 18 Oct 2019 13:16

Tgt Ion	Resp	Lower	Upper
84	133743		
49	113.9	80.2	148.9
86	59.1	42.7	79.3

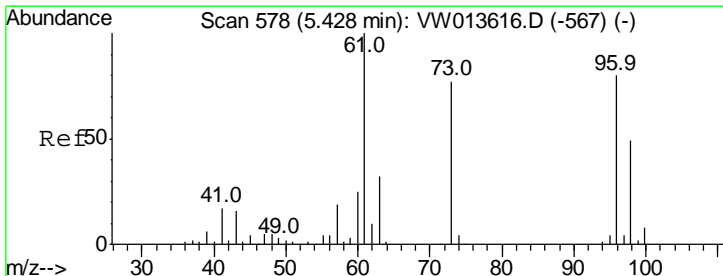
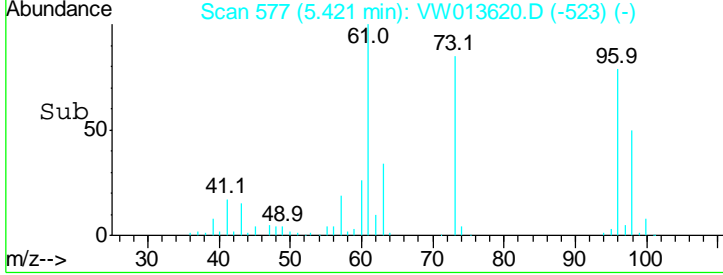
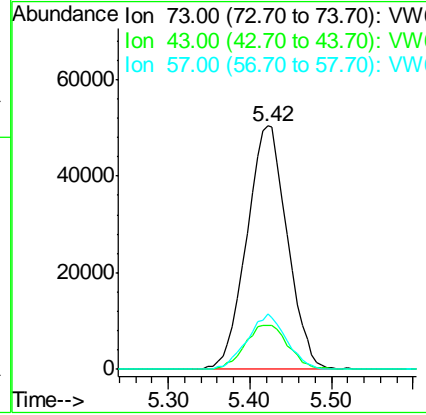
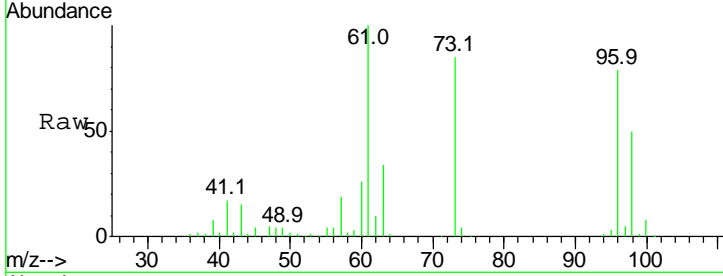




#17
 Methyl tert-butyl Ether
 Concen: 24.521 ug/L
 RT: 5.42 min Scan# 577
 Delta R.T. -0.00 min
 Lab File: VW013620.D
 Acq: 18 Oct 2019 13:16

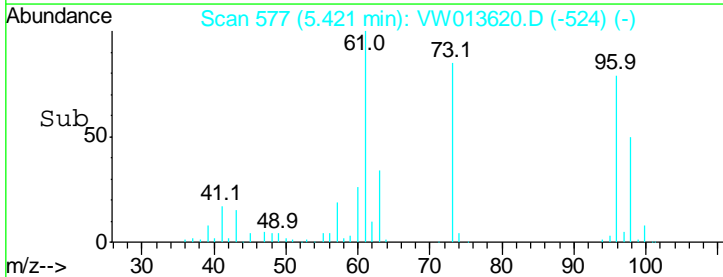
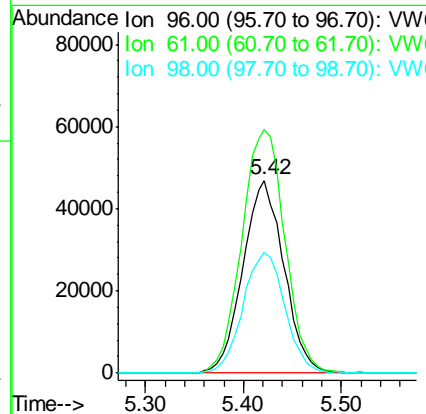
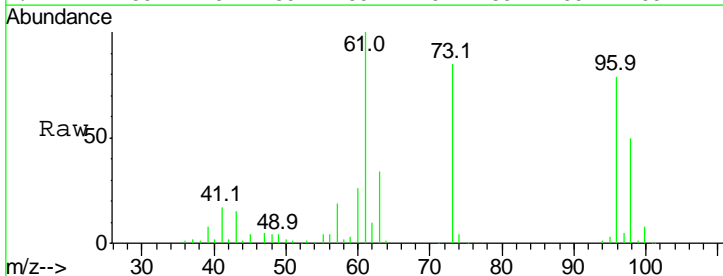
Instrument :
 MSVOA_W
ClientSampled :
 VICV02

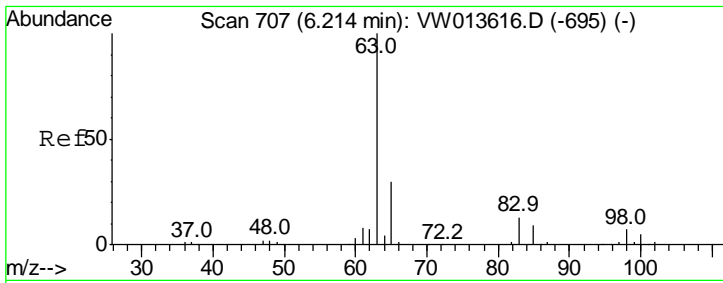
Tgt Ion	Resp	Lower	Upper
73	174182		
73	100		
43	10.8	15.4	23.2#
57	21.9	17.7	26.5



#18
 trans-1,2-Dichloroethene
 Concen: 24.162 ug/L
 RT: 5.42 min Scan# 577
 Delta R.T. -0.01 min
 Lab File: VW013620.D
 Acq: 18 Oct 2019 13:16

Tgt Ion	Resp	Lower	Upper
96	137125		
96	100		
61	126.3	88.4	164.2
98	62.8	43.0	79.8

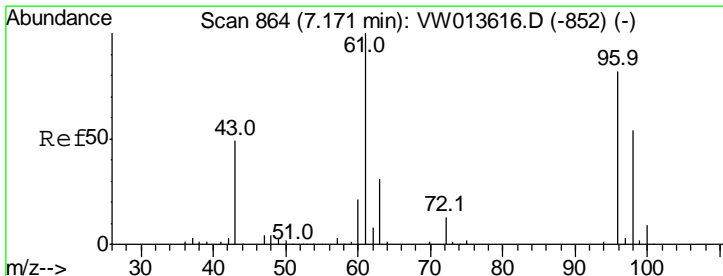
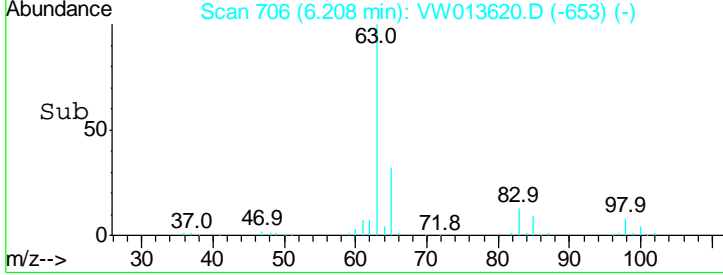
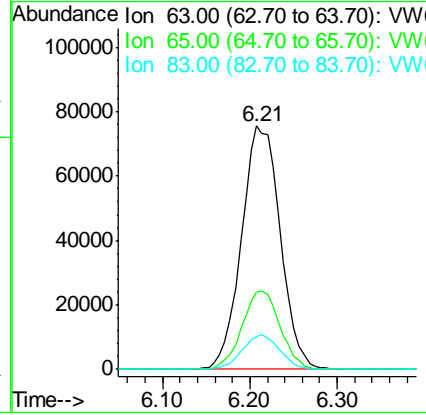
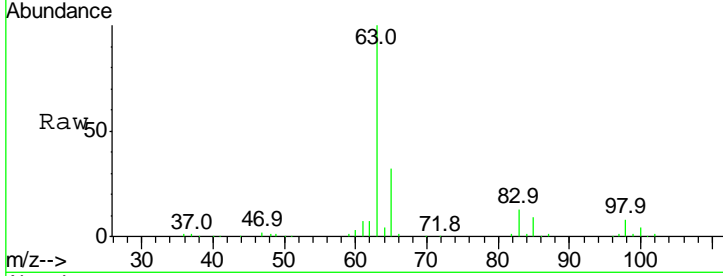




#19
 1,1-Dichloroethane
 Concen: 24.215 ug/L
 RT: 6.21 min Scan# 706
 Delta R.T. -0.01 min
 Lab File: VW013620.D
 Acq: 18 Oct 2019 13:16

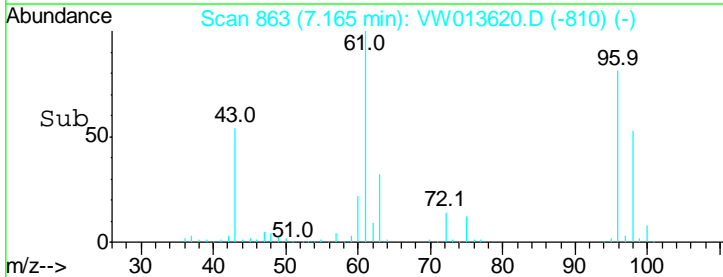
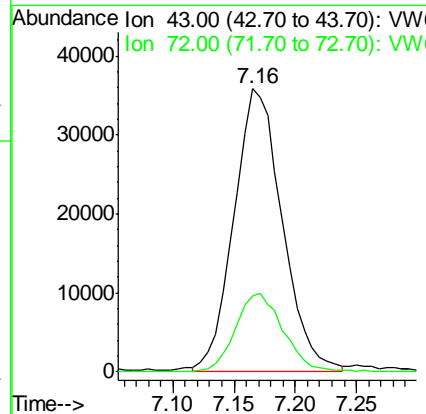
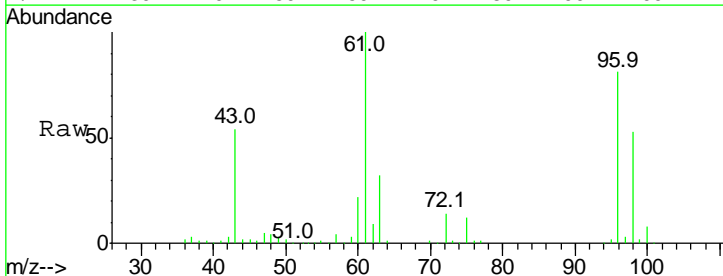
Instrument :
 MSVOA_W
 ClientSampled :
 VICV02

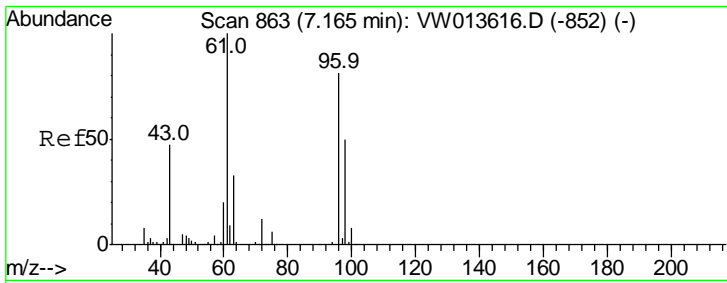
Tgt Ion	Resp	Lower	Upper
63	100		
65	31.9	20.9	38.7
83	13.2	9.2	17.2



#21
 2-Butanone
 Concen: 49.261 ug/L
 RT: 7.16 min Scan# 863
 Delta R.T. -0.01 min
 Lab File: VW013620.D
 Acq: 18 Oct 2019 13:16

Tgt Ion	Resp	Lower	Upper
43	100		
72	27.4	13.7	41.1

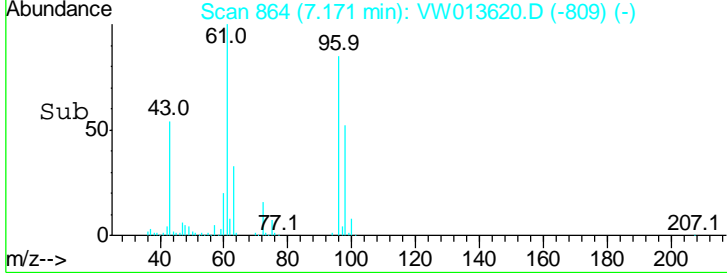
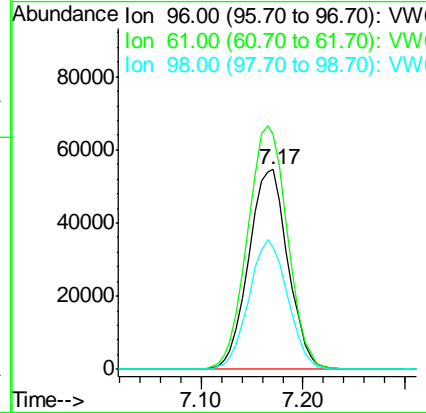
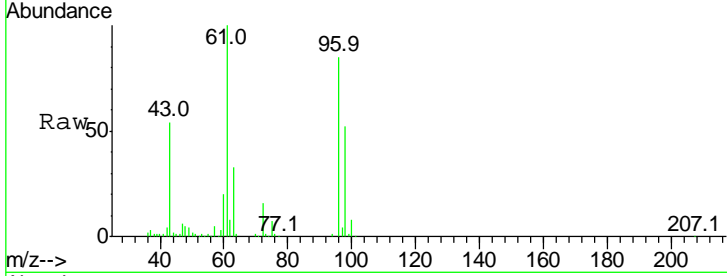




#22
 cis-1,2-Dichloroethene
 Concen: 24.113 ug/L
 RT: 7.17 min Scan# 864
 Delta R.T. 0.01 min
 Lab File: VW013620.D
 Acq: 18 Oct 2019 13:16

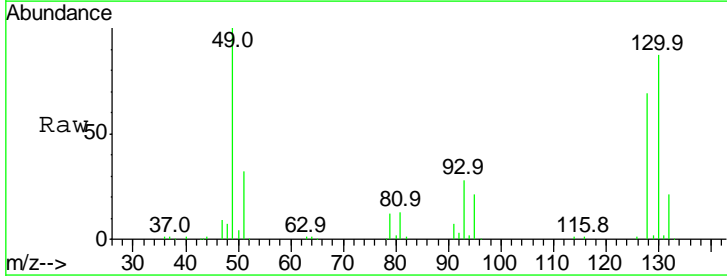
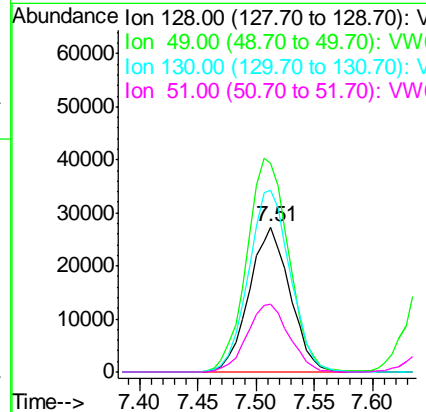
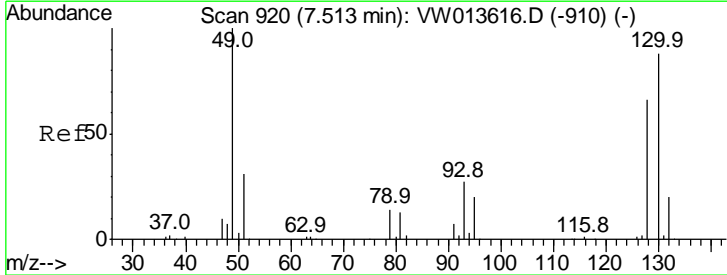
Instrument : MSVOA_W
 ClientSampled : VICV02

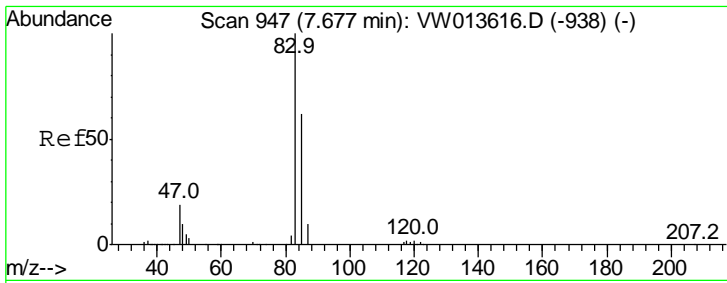
Tgt Ion	Resp	Lower	Upper
96	146889		
Ion Ratio			
96	100		
61	117.4	86.2	160.0
98	60.8	43.0	79.8



#23
 Bromochloromethane
 Concen: 24.213 ug/L
 RT: 7.51 min Scan# 920
 Delta R.T. -0.00 min
 Lab File: VW013620.D
 Acq: 18 Oct 2019 13:16

Tgt Ion	Resp	Lower	Upper
128	66666		
Ion Ratio			
128	100		
49	144.3	106.3	197.3
130	125.5	93.2	173.2
51	46.4	37.4	56.0

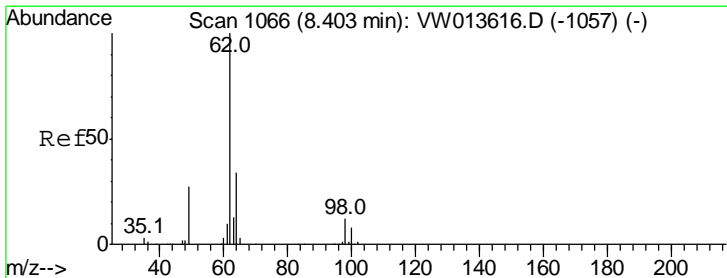
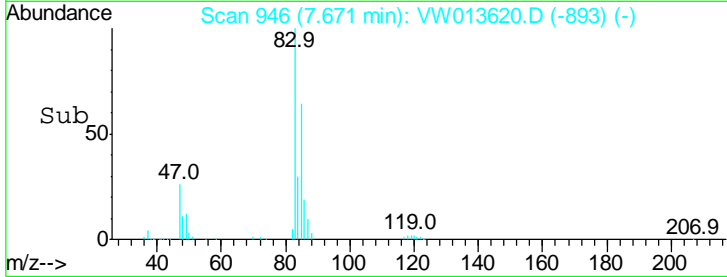
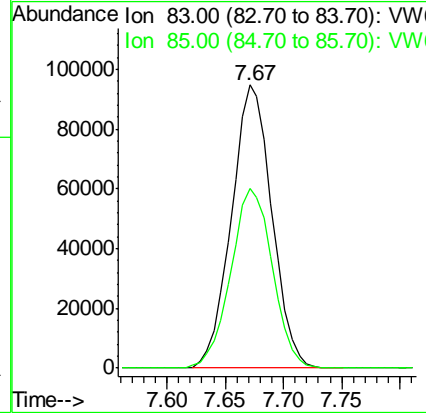
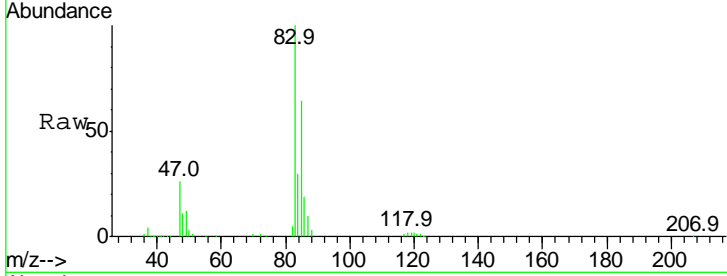




#25
 Chloroform
 Concen: 23.694 ug/L
 RT: 7.67 min Scan# 946
 Delta R.T. -0.01 min
 Lab File: VW013620.D
 Acq: 18 Oct 2019 13:16

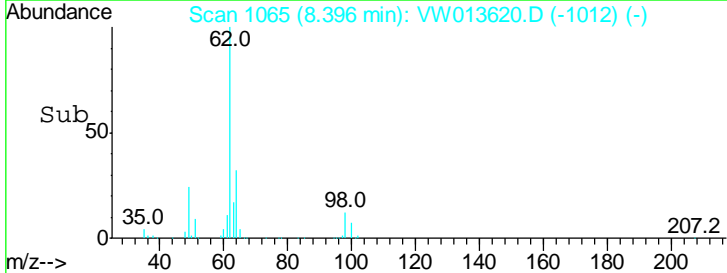
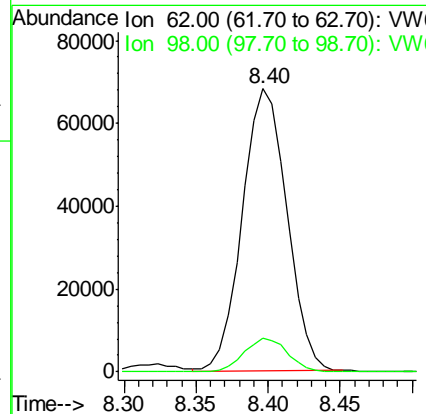
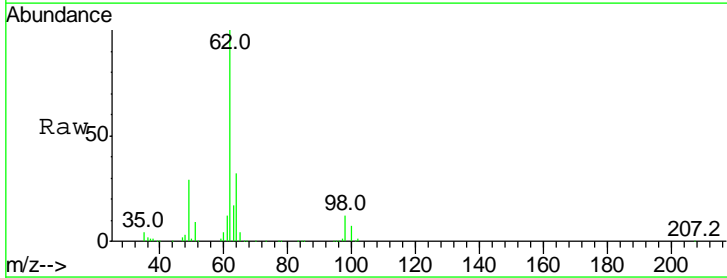
Instrument :
 MSVOA_W
 ClientSampled :
 VICV02

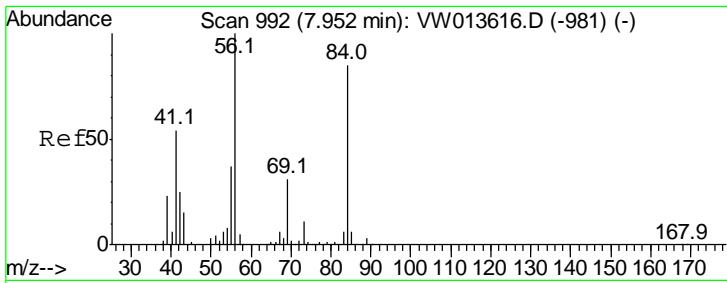
Tgt Ion	Resp	Lower	Upper
83	100		
85	65.6	46.1	85.7



#27
 1,2-Dichloroethane
 Concen: 23.692 ug/L
 RT: 8.40 min Scan# 1065
 Delta R.T. -0.01 min
 Lab File: VW013620.D
 Acq: 18 Oct 2019 13:16

Tgt Ion	Resp	Lower	Upper
62	100		
98	11.8	9.6	14.4

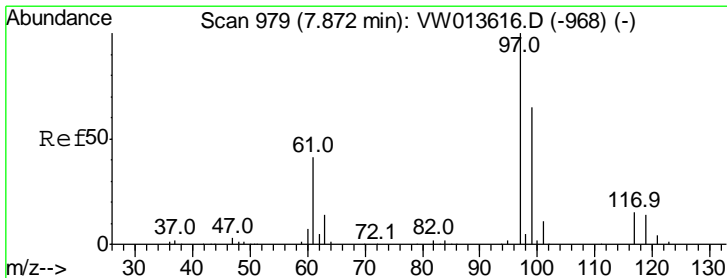
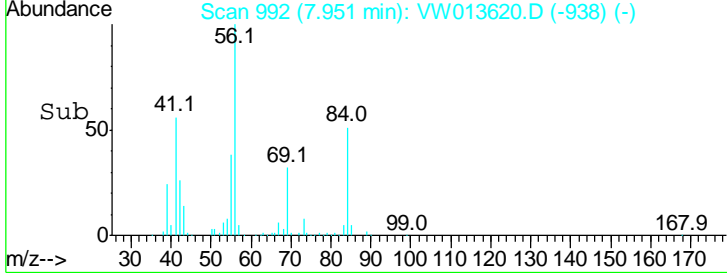
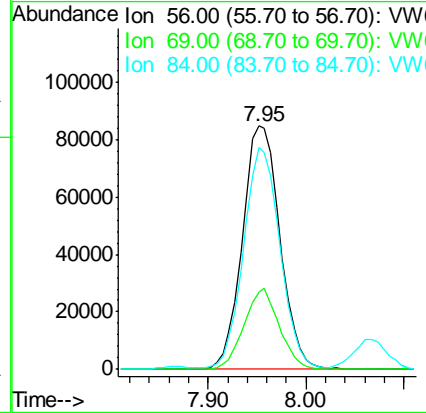
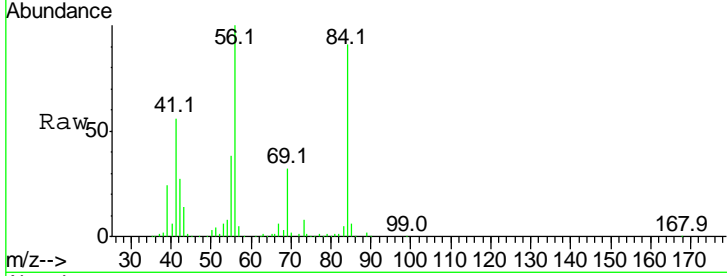




#30
 Cyclohexane
 Concen: 24.919 ug/L
 RT: 7.95 min Scan# 992
 Delta R.T. -0.00 min
 Lab File: VW013620.D
 Acq: 18 Oct 2019 13:16

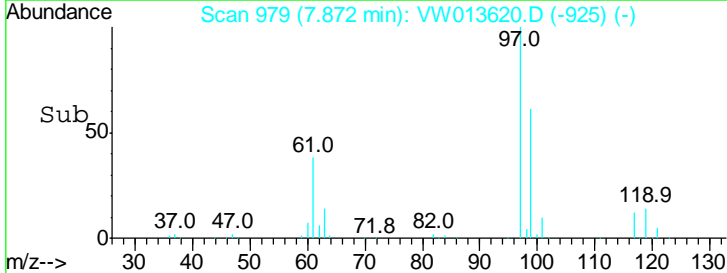
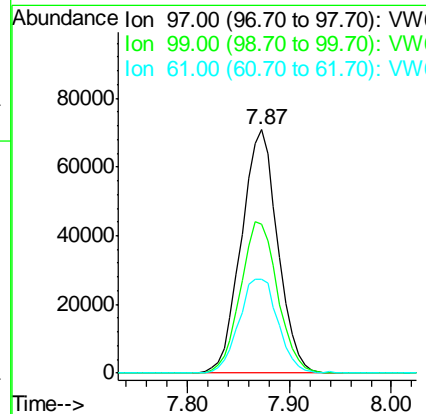
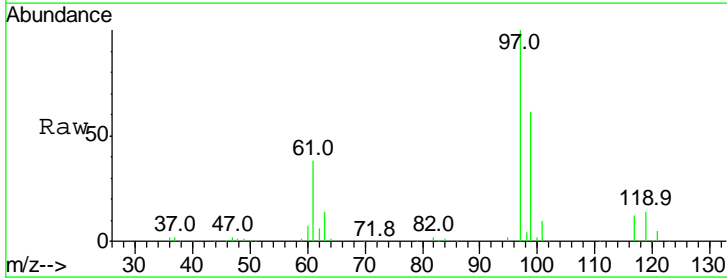
Instrument : MSVOA_W
 ClientSampled : VICV02

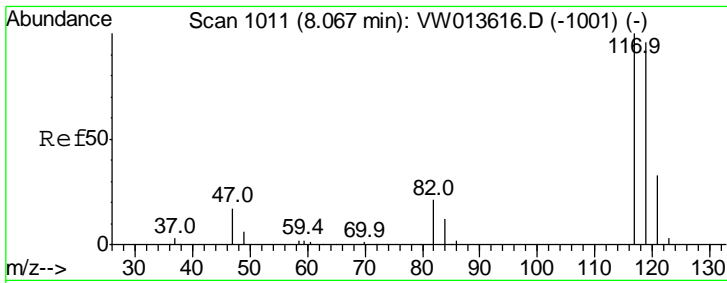
Tgt Ion	Resp	Lower	Upper
56	100		
69	31.2	24.6	37.0
84	89.2	71.1	106.7



#31
 1,1,1-Trichloroethane
 Concen: 24.403 ug/L
 RT: 7.87 min Scan# 979
 Delta R.T. -0.00 min
 Lab File: VW013620.D
 Acq: 18 Oct 2019 13:16

Tgt Ion	Resp	Lower	Upper
97	100		
99	63.4	51.7	77.5
61	41.5	33.8	50.8

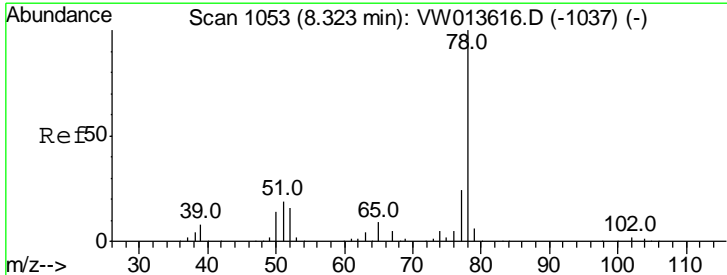
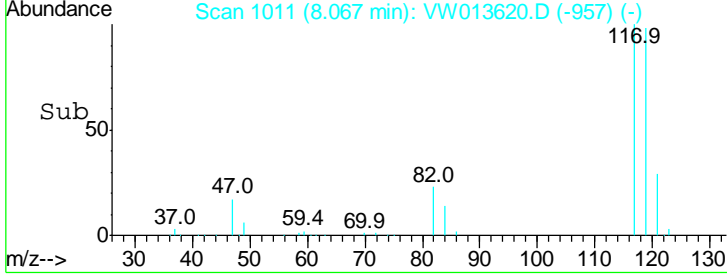
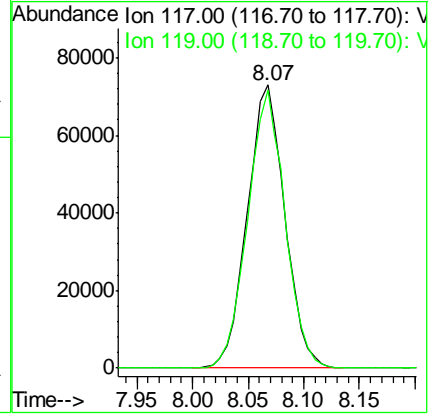
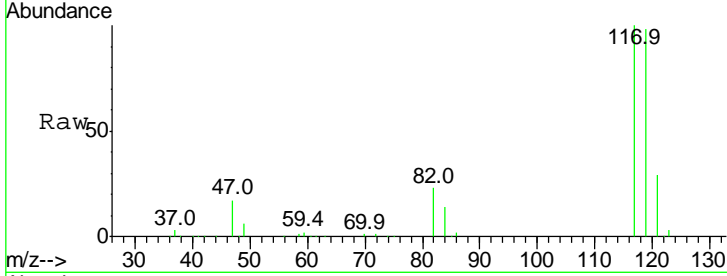




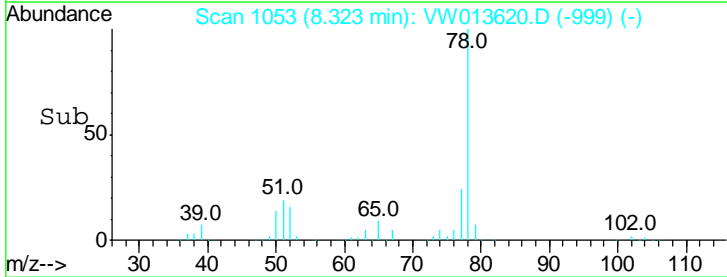
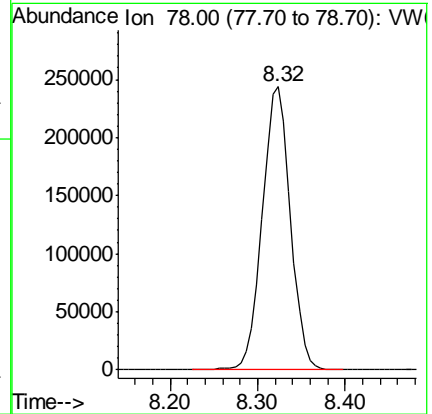
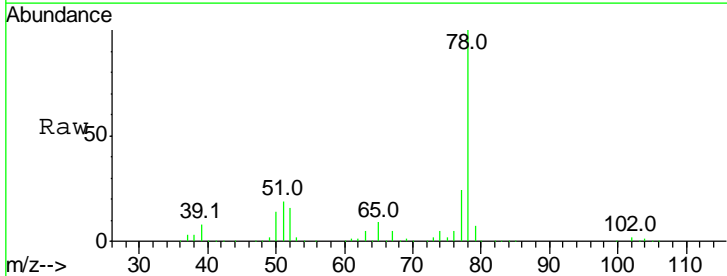
#32
 Carbon tetrachloride
 Concen: 24.472 ug/L
 RT: 8.07 min Scan# 1011
 Delta R.T. -0.00 min
 Lab File: VW013620.D
 Acq: 18 Oct 2019 13:16

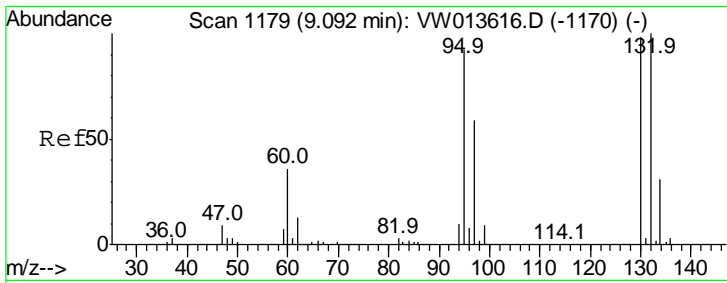
Instrument : MSVOA_W
 ClientSampled : VICV02

Tgt Ion: 117 Resp: 171524
 Ion Ratio Lower Upper
 117 100
 119 97.5 76.1 114.1



#34
 Benzene
 Concen: 24.548 ug/L
 RT: 8.32 min Scan# 1053
 Delta R.T. -0.00 min
 Lab File: VW013620.D
 Acq: 18 Oct 2019 13:16
 Tgt Ion: 78 Resp: 543563

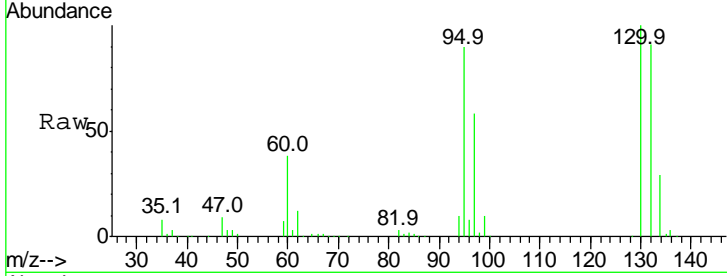




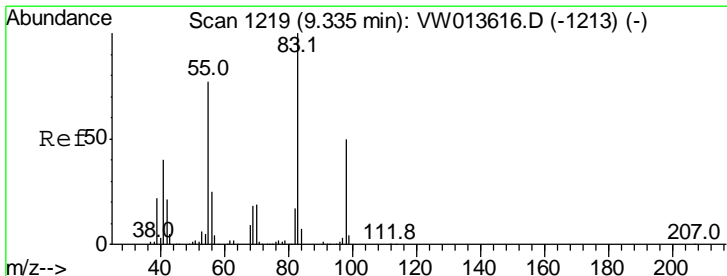
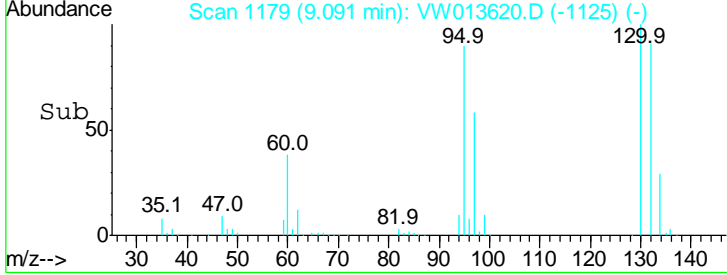
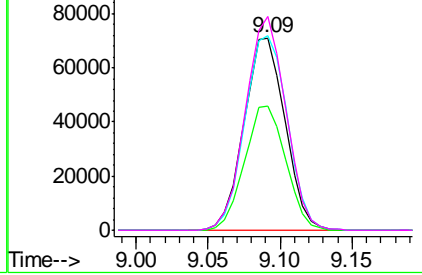
#35
 Trichloroethene
 Concen: 24.717 ug/L
 RT: 9.09 min Scan# 1179
 Delta R.T. -0.00 min
 Lab File: VW013620.D
 Acq: 18 Oct 2019 13:16

Instrument : MSVOA_W
 ClientSampled : VICV02

Tgt Ion	Resp	Lower	Upper
95	100		
97	64.9	45.8	85.2
132	104.7	74.3	138.1
130	109.2	76.6	142.3

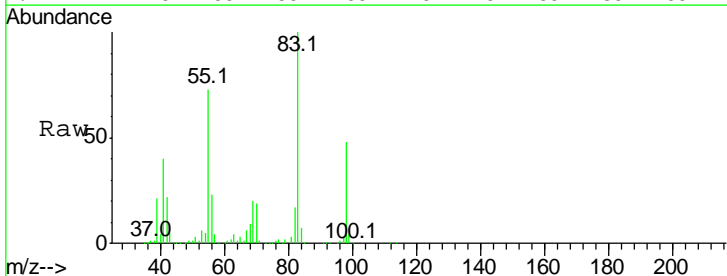


Abundance Ion 95.00 (94.70 to 95.70): VW
 Ion 97.00 (96.70 to 97.70): VW
 Ion 132.00 (131.70 to 132.70): V
 Ion 130.00 (129.70 to 130.70): V

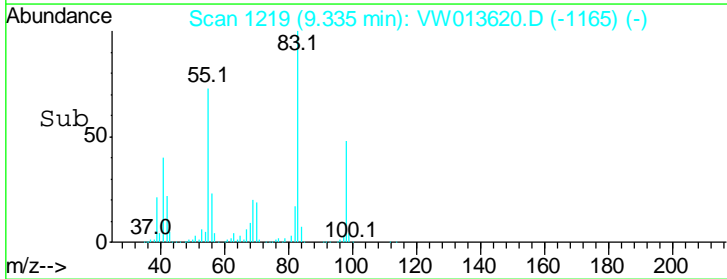
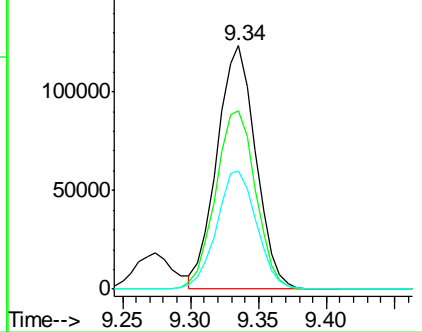


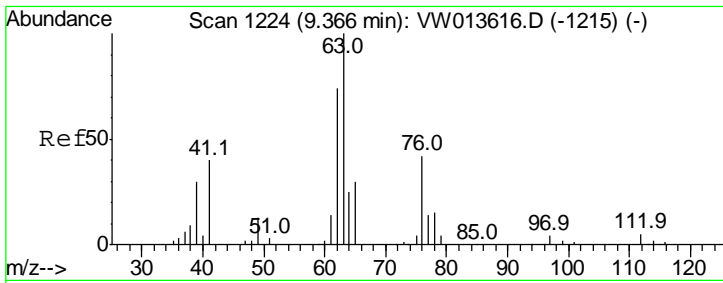
#36
 Methylcyclohexane
 Concen: 24.458 ug/L
 RT: 9.34 min Scan# 1219
 Delta R.T. -0.00 min
 Lab File: VW013620.D
 Acq: 18 Oct 2019 13:16

Tgt Ion	Resp	Lower	Upper
83	100		
55	75.6	60.2	90.4
98	50.0	39.1	58.7



Abundance Ion 83.00 (82.70 to 83.70): VW
 Ion 55.00 (54.70 to 55.70): VW
 Ion 98.00 (97.70 to 98.70): VW

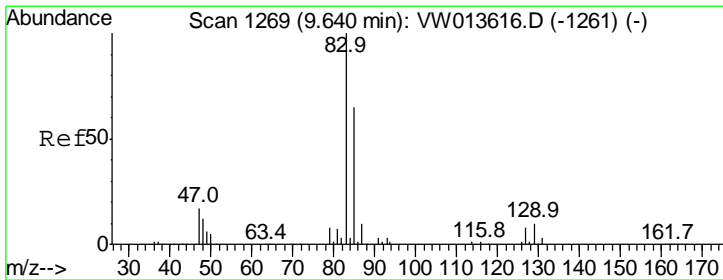
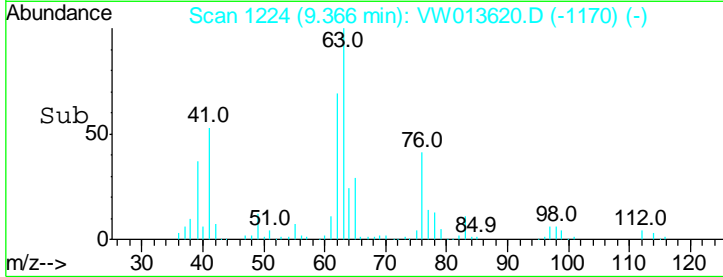
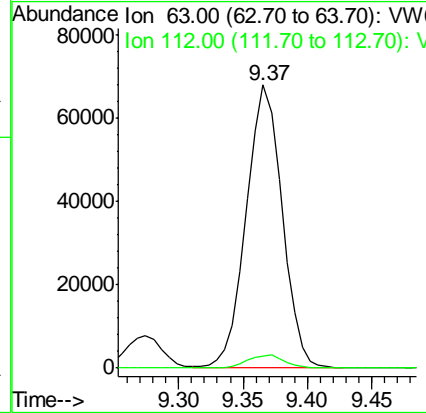
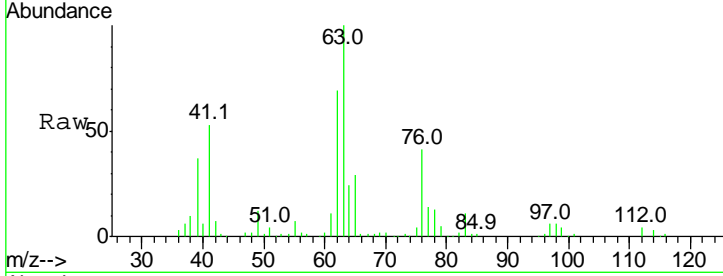




#40
 1,2-Dichloropropane
 Concen: 24.261 ug/L
 RT: 9.37 min Scan# 1224
 Delta R.T. -0.00 min
 Lab File: VW013620.D
 Acq: 18 Oct 2019 13:16

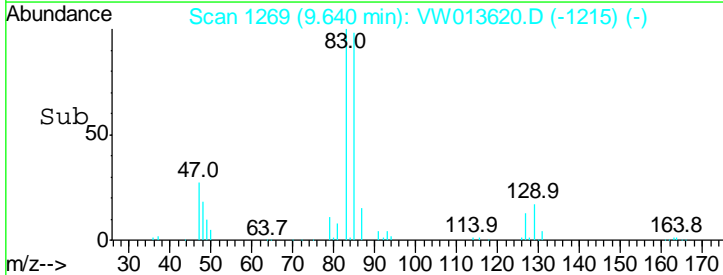
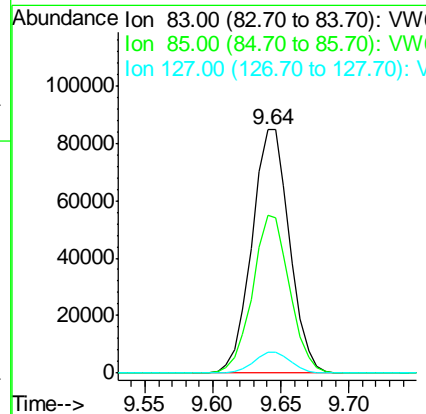
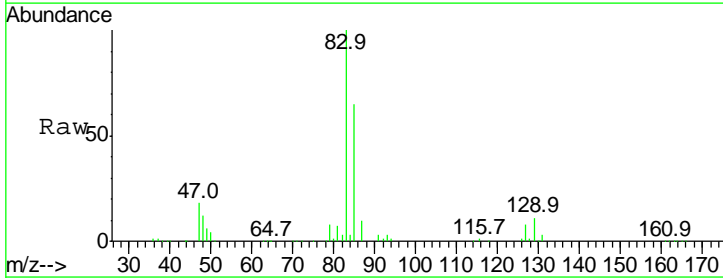
Instrument :
 MSVOA_W
 ClientSampled :
 VICV02

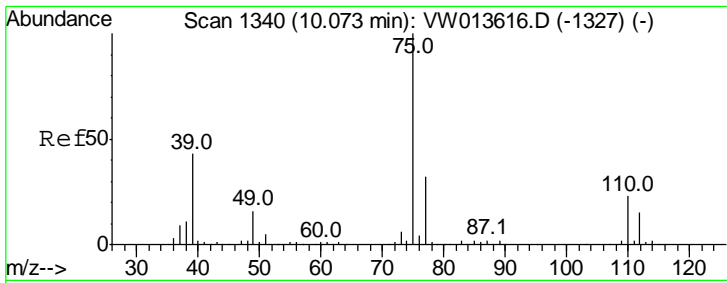
Tgt Ion: 63 Resp: 131354
 Ion Ratio Lower Upper
 63 100
 112 4.9 3.9 5.9



#41
 Bromodichloromethane
 Concen: 24.768 ug/L
 RT: 9.64 min Scan# 1269
 Delta R.T. -0.00 min
 Lab File: VW013620.D
 Acq: 18 Oct 2019 13:16

Tgt Ion: 83 Resp: 164313
 Ion Ratio Lower Upper
 83 100
 85 64.7 45.8 85.0
 127 8.3 6.6 10.0



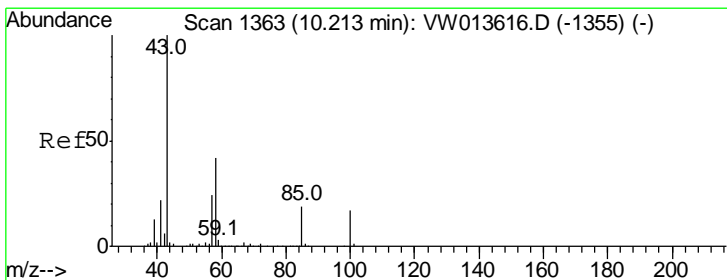
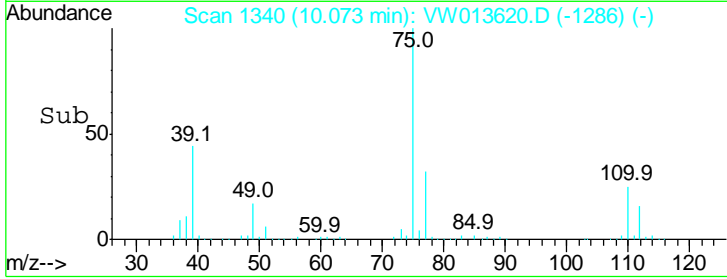
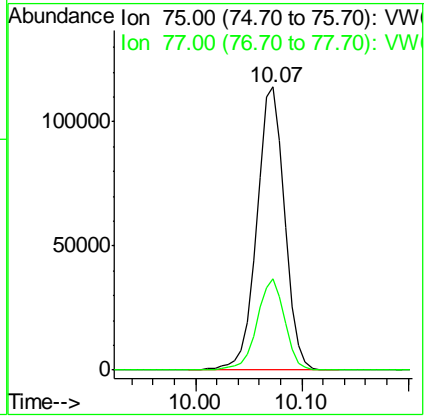
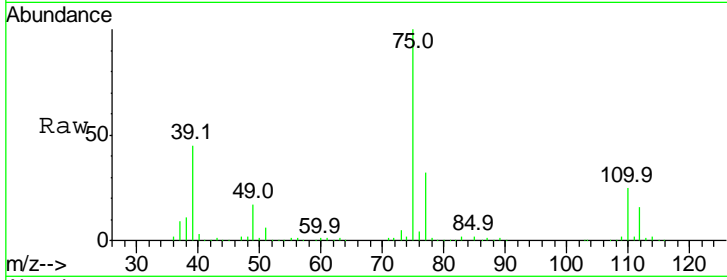


#42
 cis-1,3-Dichloropropene
 Concen: 24.506 ug/L
 RT: 10.07 min Scan# 1340
 Delta R.T. -0.00 min
 Lab File: VW013620.D
 Acq: 18 Oct 2019 13:16

Instrument : MSVOA_W
 ClientSampled : VICV02

Tgt Ion: 75 Resp: 209482

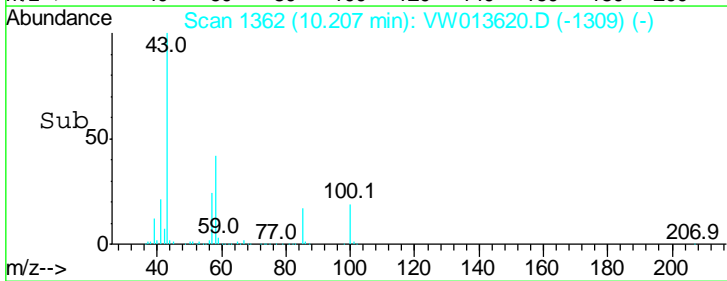
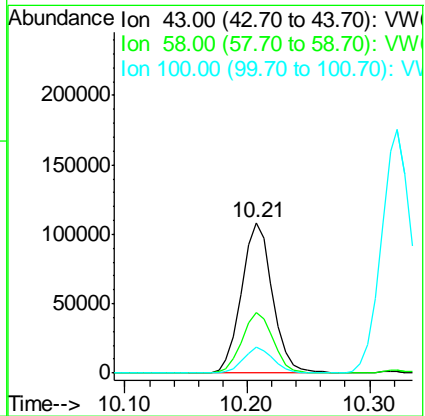
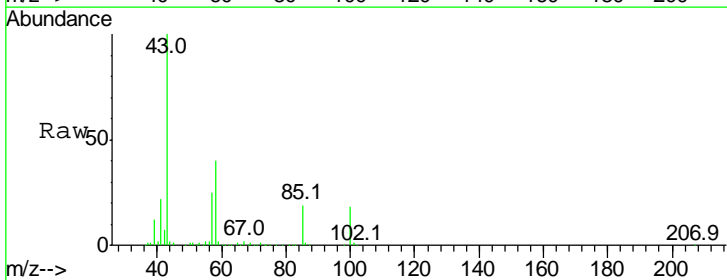
Ion	Ratio	Lower	Upper
75	100		
77	32.5	22.5	41.9

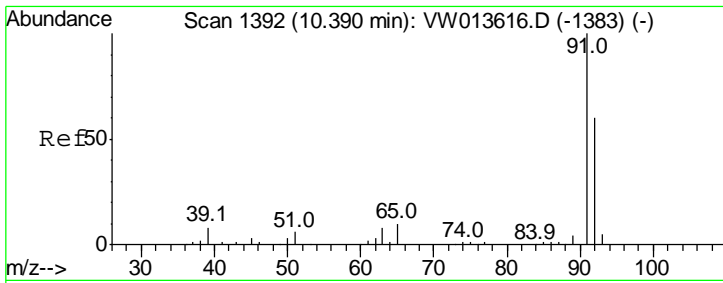


#43
 4-Methyl-2-pentanone
 Concen: 51.358 ug/L
 RT: 10.21 min Scan# 1362
 Delta R.T. -0.01 min
 Lab File: VW013620.D
 Acq: 18 Oct 2019 13:16

Tgt Ion: 43 Resp: 189712

Ion	Ratio	Lower	Upper
43	100		
58	40.8	32.8	49.2
100	17.0	13.7	20.5

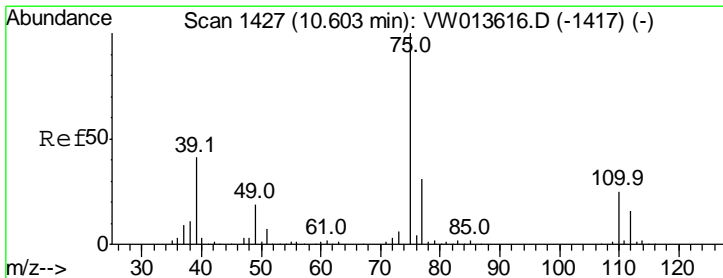
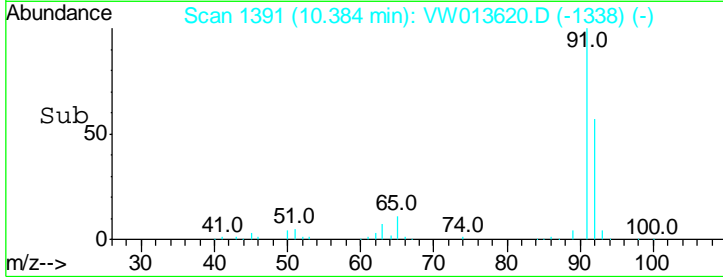
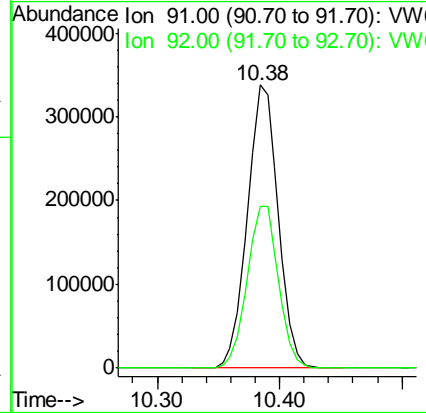
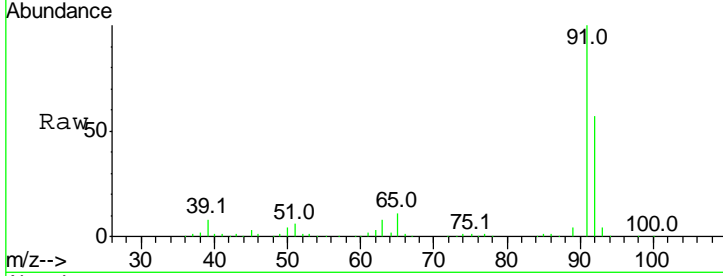




#44
 Toluene
 Concen: 24.870 ug/L
 RT: 10.38 min Scan# 1391
 Delta R.T. -0.01 min
 Lab File: VW013620.D
 Acq: 18 Oct 2019 13:16

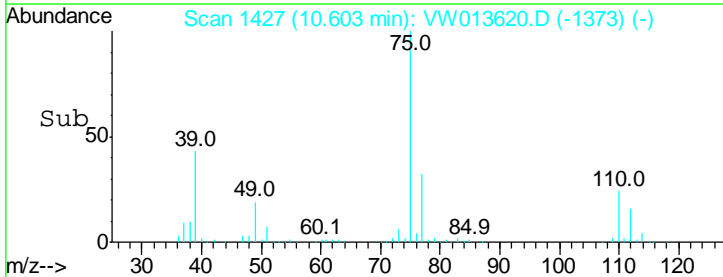
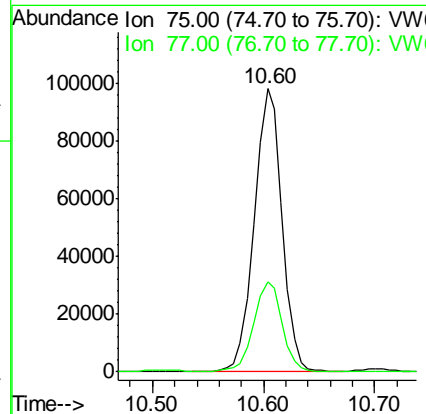
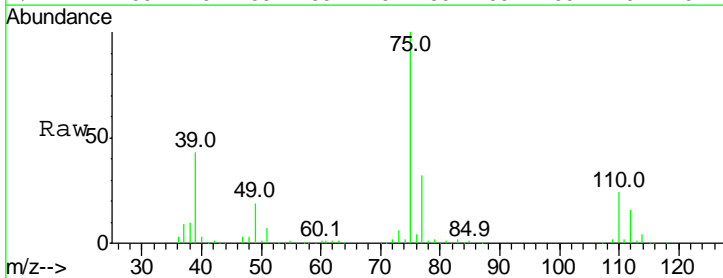
Instrument : MSVOA_W
 ClientSampled : VICV02

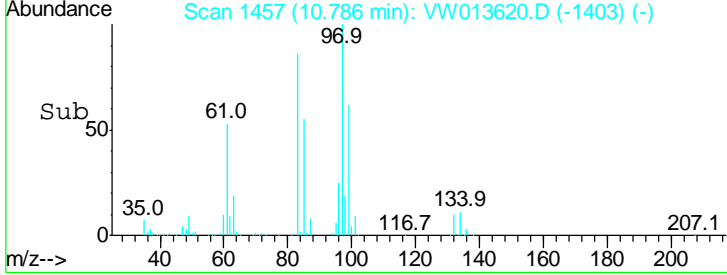
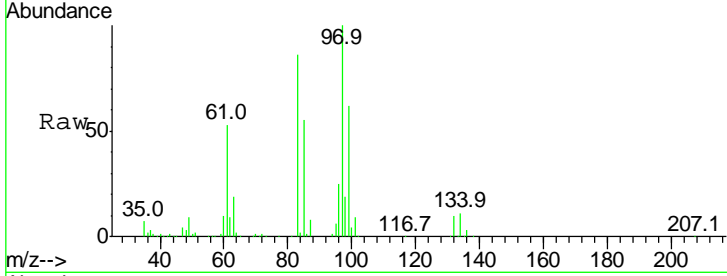
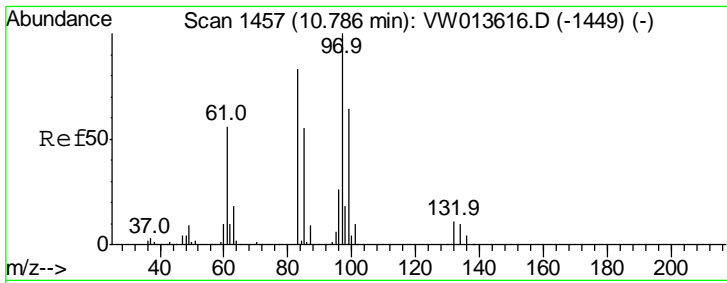
Tgt Ion: 91 Resp: 591671
 Ion Ratio Lower Upper
 91 100
 92 57.3 42.0 78.0



#45
 trans-1,3-Dichloropropene
 Concen: 24.710 ug/L
 RT: 10.60 min Scan# 1427
 Delta R.T. -0.00 min
 Lab File: VW013620.D
 Acq: 18 Oct 2019 13:16

Tgt Ion: 75 Resp: 170497
 Ion Ratio Lower Upper
 75 100
 77 31.6 22.0 41.0

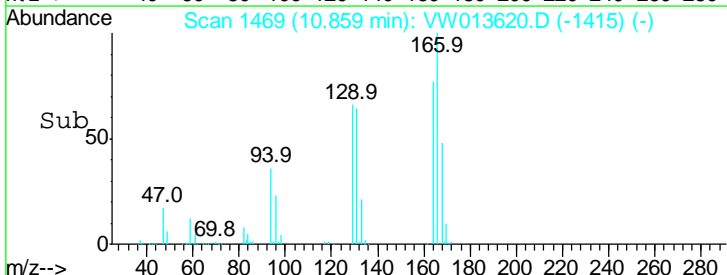
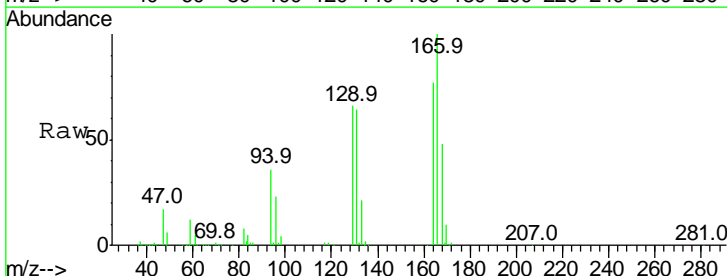
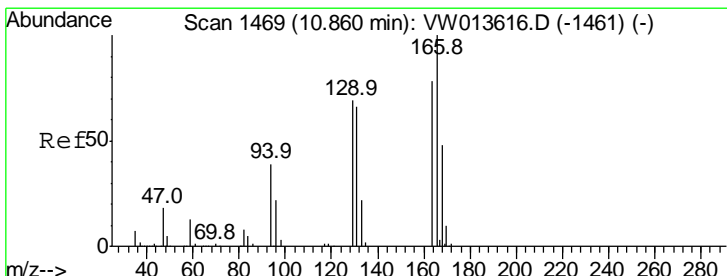
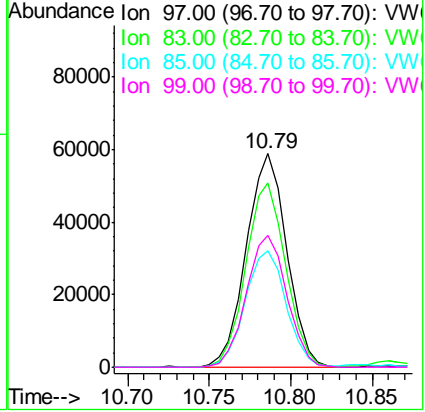




#46
 1,1,2-Trichloroethane
 Concen: 24.347 ug/L
 RT: 10.79 min Scan# 1457
 Delta R.T. -0.00 min
 Lab File: VW013620.D
 Acq: 18 Oct 2019 13:16

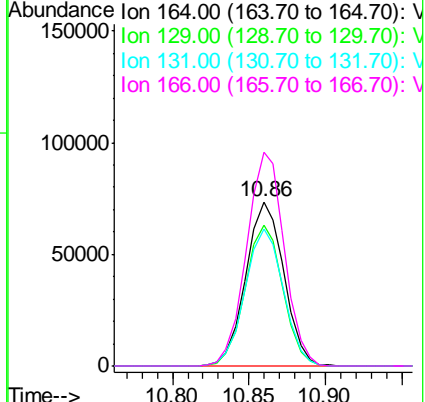
Instrument : MSVOA_W
 ClientSampled : VICV02

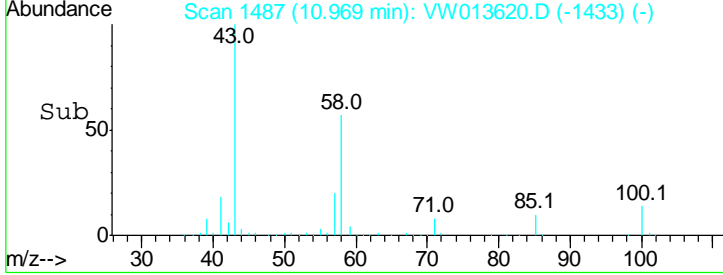
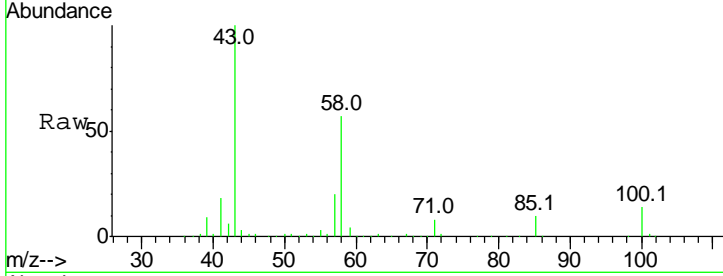
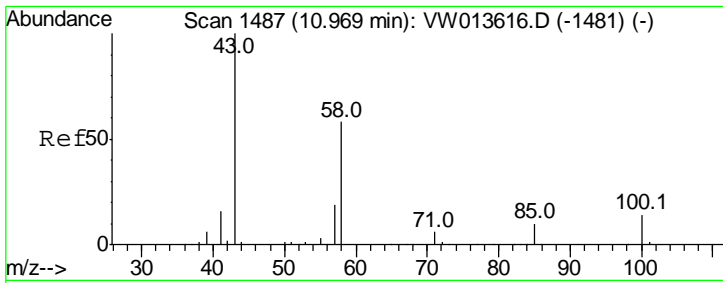
Tgt Ion	Resp	Lower	Upper
97	101666		
83	86.1	57.7	107.3
85	54.5	38.6	71.6
99	61.6	44.7	82.9



#47
 Tetrachloroethene
 Concen: 24.463 ug/L
 RT: 10.86 min Scan# 1469
 Delta R.T. -0.00 min
 Lab File: VW013620.D
 Acq: 18 Oct 2019 13:16

Tgt Ion	Resp	Lower	Upper
164	127220		
129	85.6	61.8	114.8
131	83.2	59.2	110.0
166	130.0	89.2	165.8



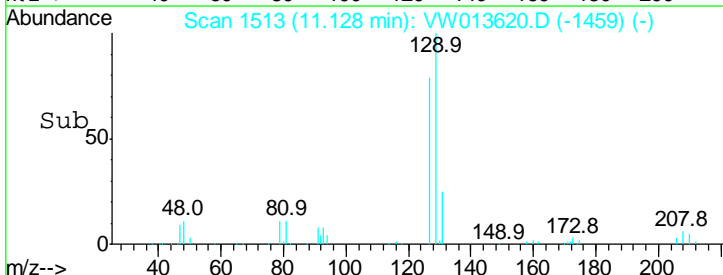
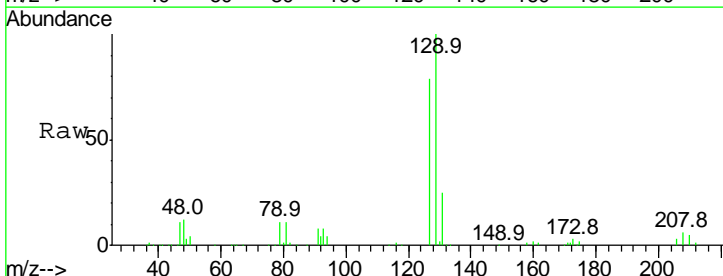
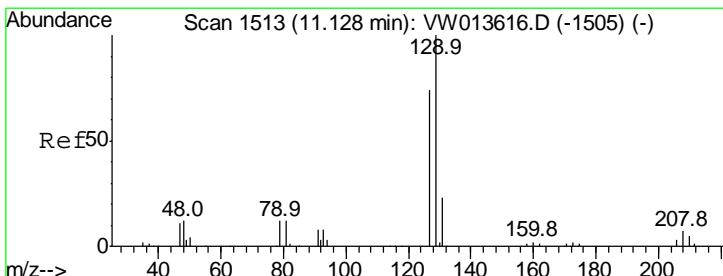
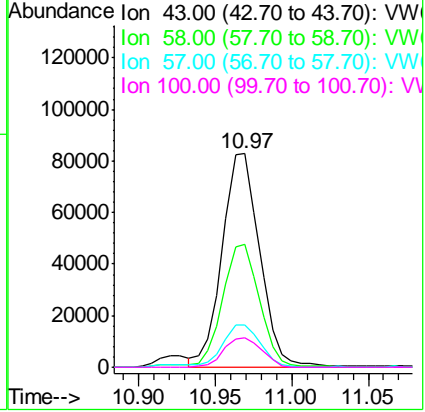


#49
 2-Hexanone
 Concen: 53.947 ug/L
 RT: 10.97 min Scan# 1487
 Delta R.T. -0.00 min
 Lab File: VW013620.D
 Acq: 18 Oct 2019 13:16

Instrument : MSVOA_W
 ClientSampled : VICV02

Tgt Ion: 43 Resp: 141374

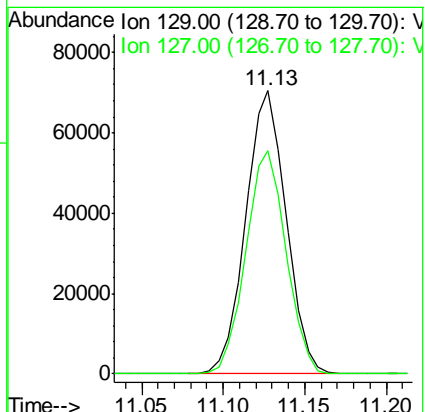
Ion	Ratio	Lower	Upper
43	100		
58	55.1	45.8	68.6
57	19.5	15.4	23.2
100	14.0	10.8	16.2

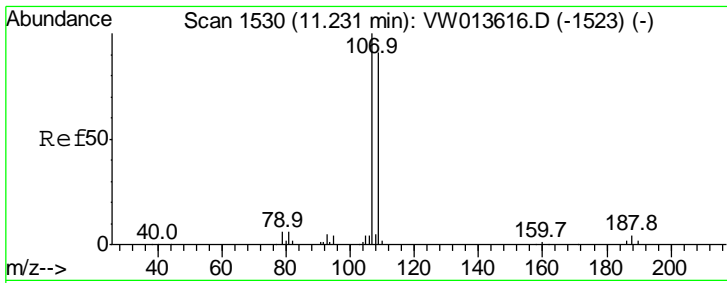


#50
 Dibromochloromethane
 Concen: 24.610 ug/L
 RT: 11.13 min Scan# 1513
 Delta R.T. -0.00 min
 Lab File: VW013620.D
 Acq: 18 Oct 2019 13:16

Tgt Ion: 129 Resp: 121278

Ion	Ratio	Lower	Upper
129	100		
127	79.0	51.4	95.5

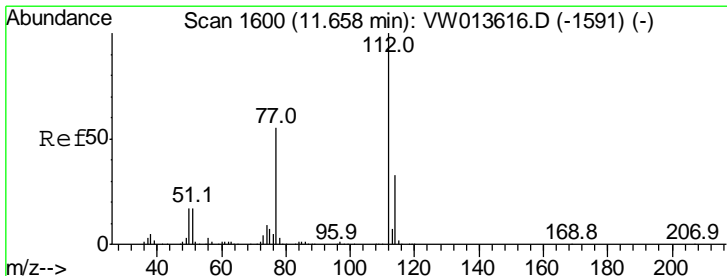
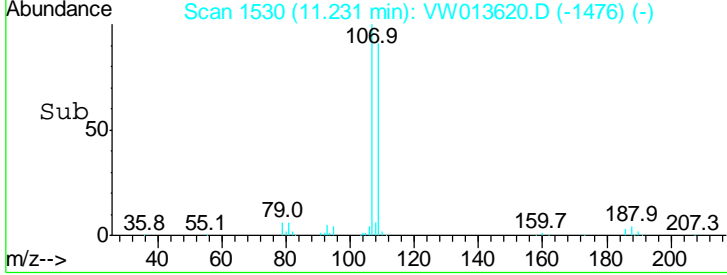
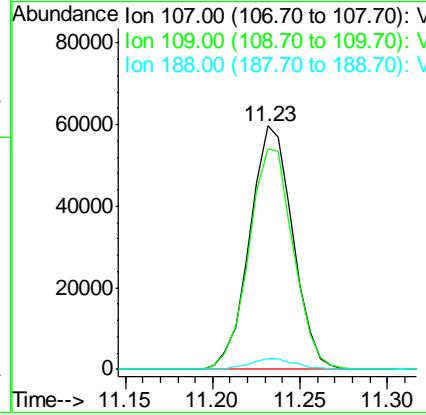
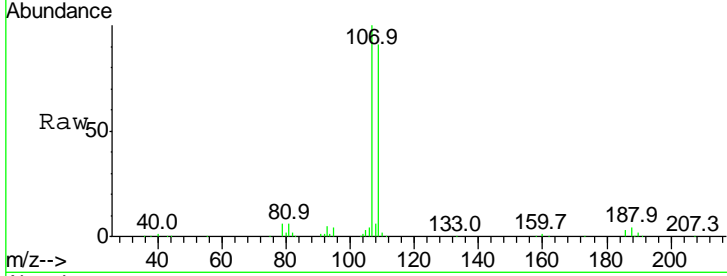




#51
 1,2-Dibromoethane
 Concen: 25.164 ug/L
 RT: 11.23 min Scan# 1530
 Delta R.T. -0.00 min
 Lab File: VW013620.D
 Acq: 18 Oct 2019 13:16

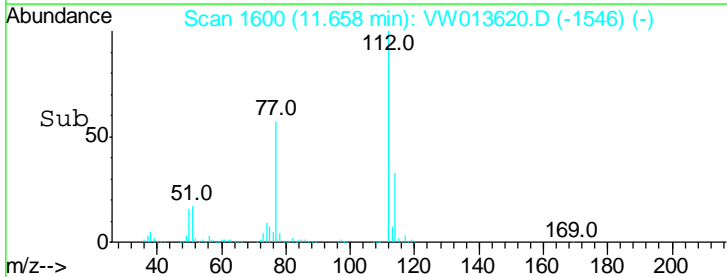
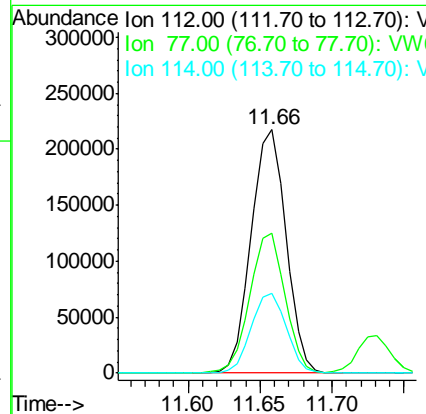
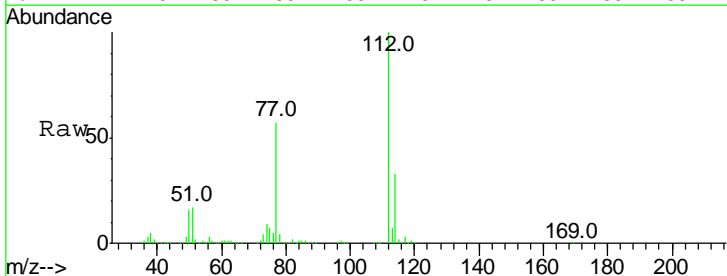
Instrument :
 MSVOA_W
 ClientSampled :
 VICV02

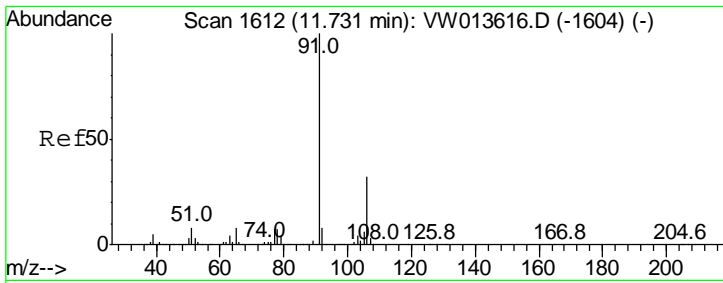
Tgt Ion	Resp	Lower	Upper
107	102178		
107	100		
109	90.8	64.0	118.8
188	4.5	3.4	5.2



#52
 Chlorobenzene
 Concen: 23.971 ug/L
 RT: 11.66 min Scan# 1600
 Delta R.T. -0.00 min
 Lab File: VW013620.D
 Acq: 18 Oct 2019 13:16

Tgt Ion	Resp	Lower	Upper
112	364883		
112	100		
77	57.3	44.1	66.1
114	32.9	23.4	43.4

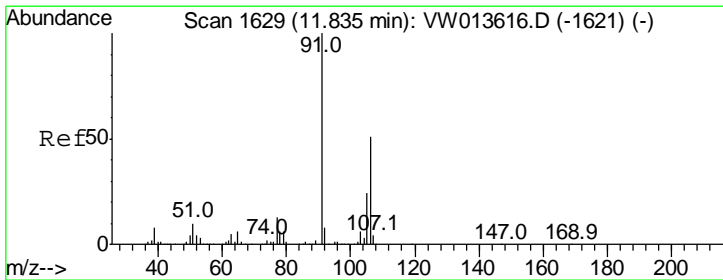
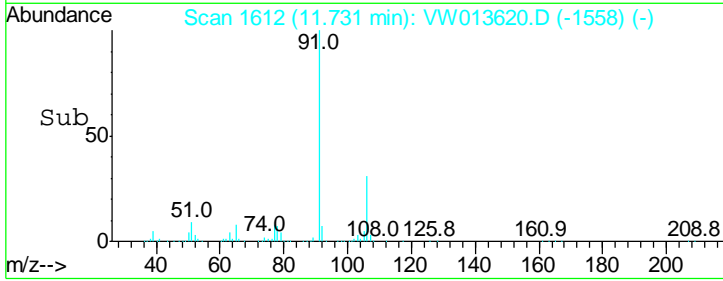
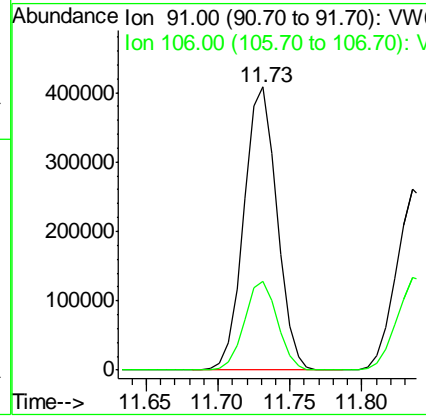
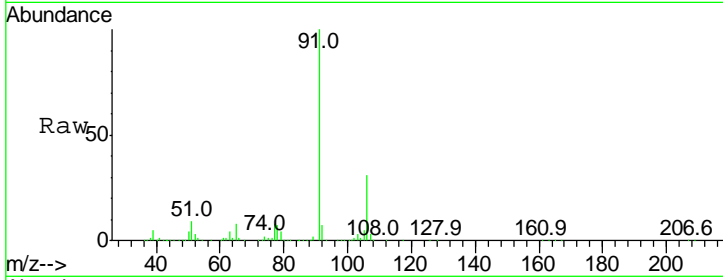




#53
 Ethylbenzene
 Concen: 24.633 ug/L
 RT: 11.73 min Scan# 1612
 Delta R.T. -0.00 min
 Lab File: VW013620.D
 Acq: 18 Oct 2019 13:16

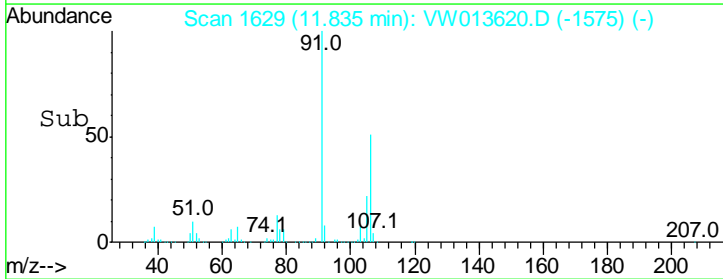
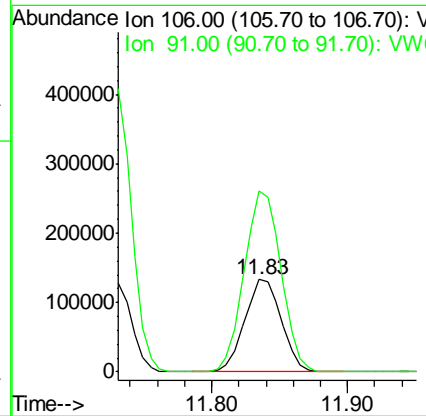
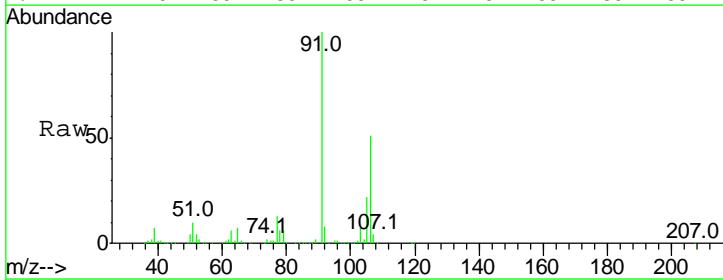
Instrument : MSVOA_W
 ClientSampled : VICV02

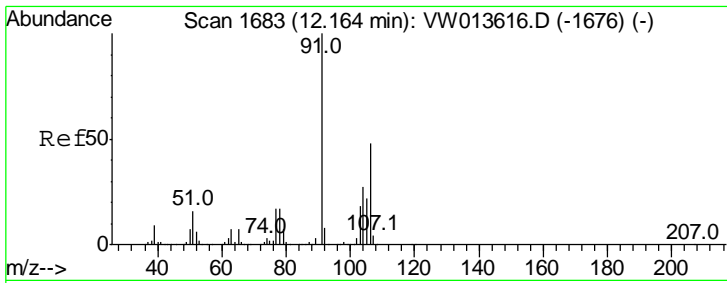
Tgt Ion: 91 Resp: 647496
 Ion Ratio Lower Upper
 91 100
 106 31.4 22.3 41.3



#54
 m,p-Xylene
 Concen: 24.713 ug/L
 RT: 11.83 min Scan# 1629
 Delta R.T. -0.00 min
 Lab File: VW013620.D
 Acq: 18 Oct 2019 13:16

Tgt Ion: 106 Resp: 251025
 Ion Ratio Lower Upper
 106 100
 91 195.0 137.7 255.7

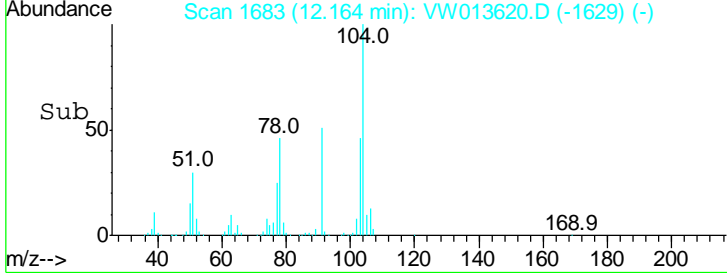
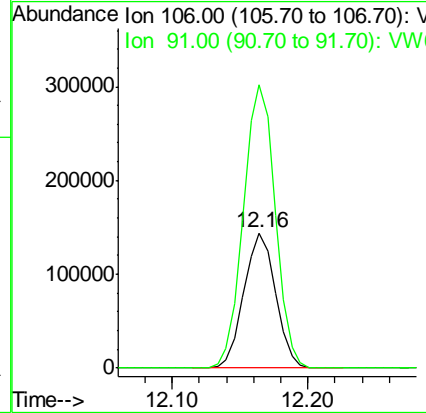
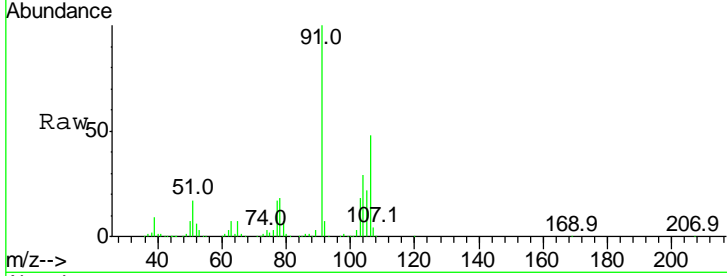




#55
 o-xylene
 Concen: 24.457 ug/L
 RT: 12.16 min Scan# 1683
 Delta R.T. -0.00 min
 Lab File: VW013620.D
 Acq: 18 Oct 2019 13:16

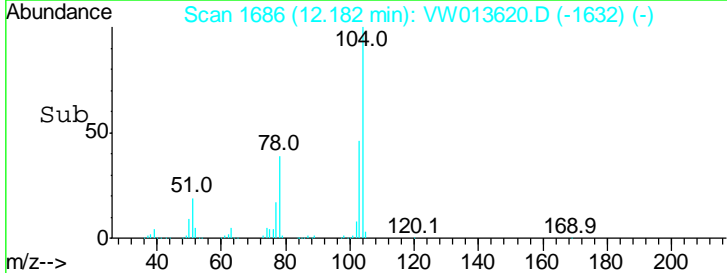
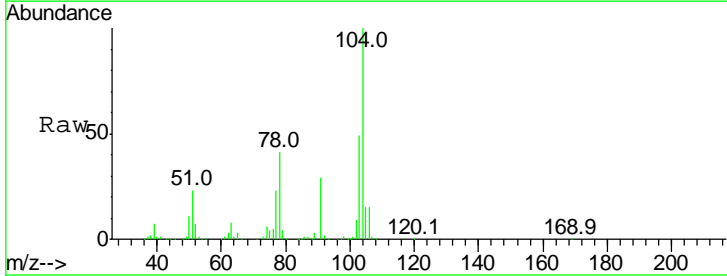
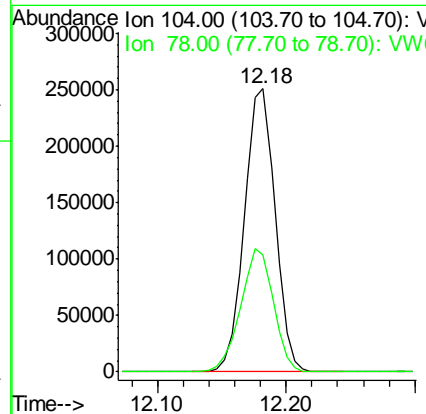
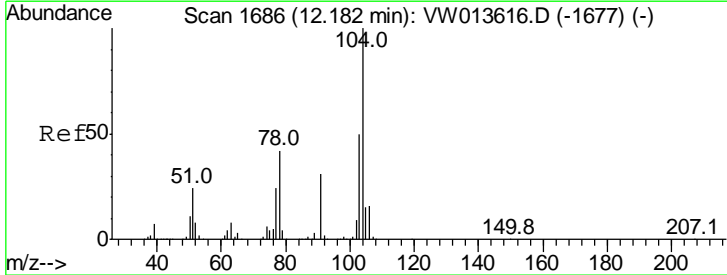
Instrument :
 MSVOA_W
ClientSampled :
 VICV02

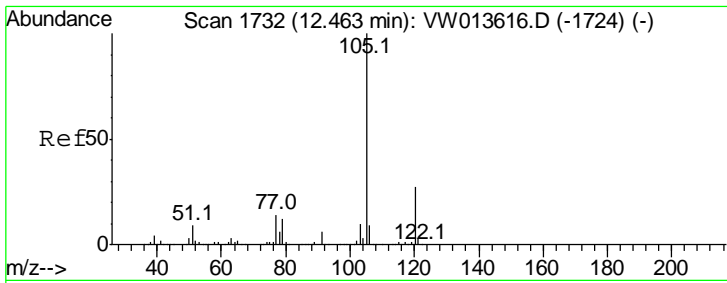
Tgt Ion:106 Resp: 235749
 Ion Ratio Lower Upper
 106 100
 91 208.9 144.8 269.0



#56
 Styrene
 Concen: 25.001 ug/L
 RT: 12.18 min Scan# 1686
 Delta R.T. -0.00 min
 Lab File: VW013620.D
 Acq: 18 Oct 2019 13:16

Tgt Ion:104 Resp: 412265
 Ion Ratio Lower Upper
 104 100
 78 41.1 29.3 54.5

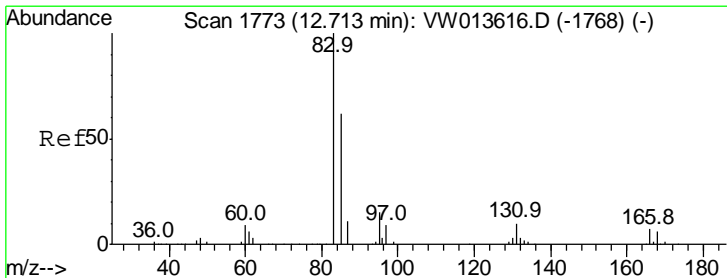
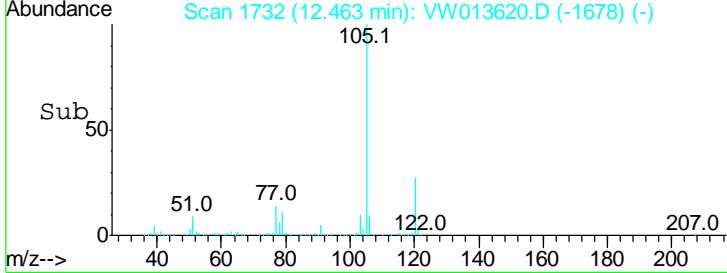
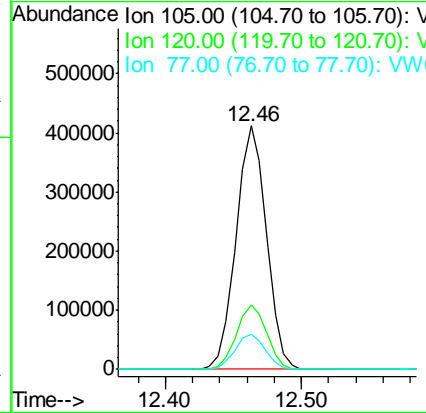
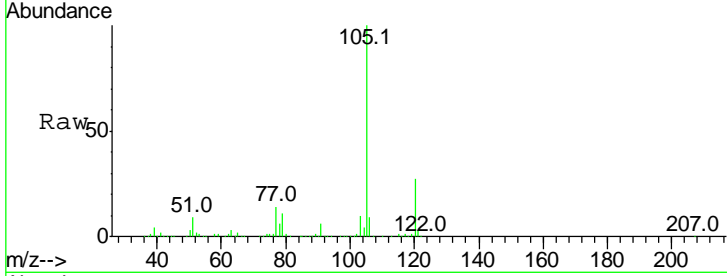




#57
 Isopropylbenzene
 Concen: 24.608 ug/L
 RT: 12.46 min Scan# 1732
 Delta R.T. -0.00 min
 Lab File: VW013620.D
 Acq: 18 Oct 2019 13:16

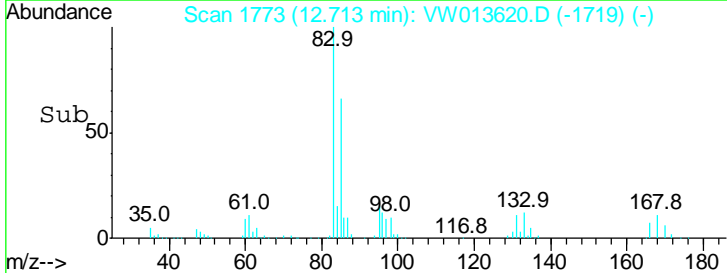
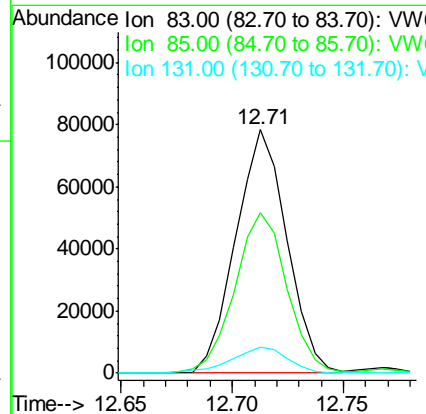
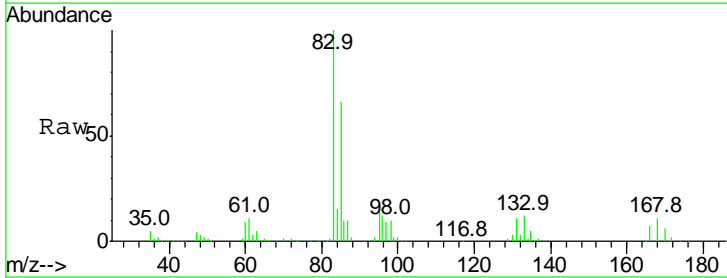
Instrument :
 MSVOA_W
 ClientSampled :
 VICV02

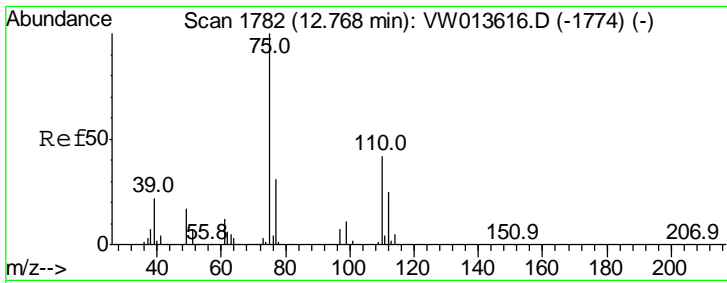
Tgt Ion	Resp	Lower	Upper
105	100		
120	26.6	21.4	32.2
77	14.3	11.4	17.0



#58
 1,1,2,2-Tetrachloroethane
 Concen: 25.577 ug/L
 RT: 12.71 min Scan# 1773
 Delta R.T. -0.00 min
 Lab File: VW013620.D
 Acq: 18 Oct 2019 13:16

Tgt Ion	Resp	Lower	Upper
83	100		
85	65.9	44.9	83.3
131	10.5	8.6	13.0

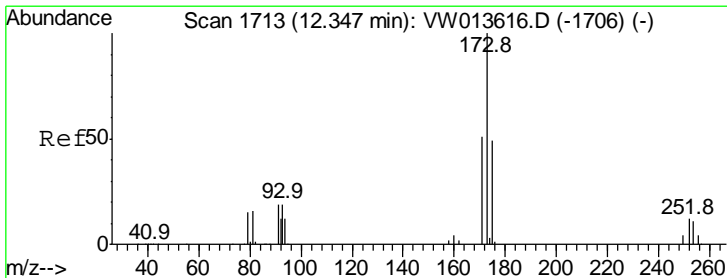
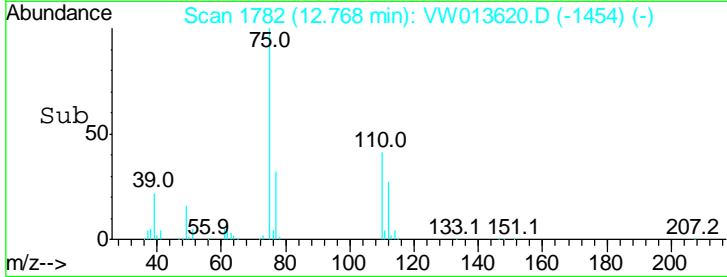
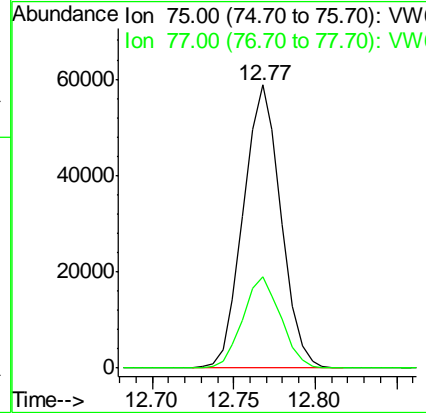
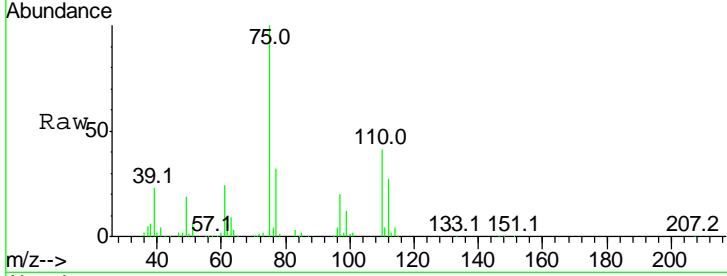




#59
 1,2,3-Trichloropropane
 Concen: 25.808 ug/L
 RT: 12.77 min Scan# 1782
 Delta R.T. -0.00 min
 Lab File: VW013620.D
 Acq: 18 Oct 2019 13:16

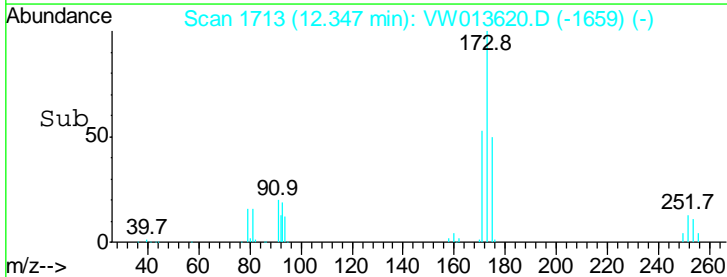
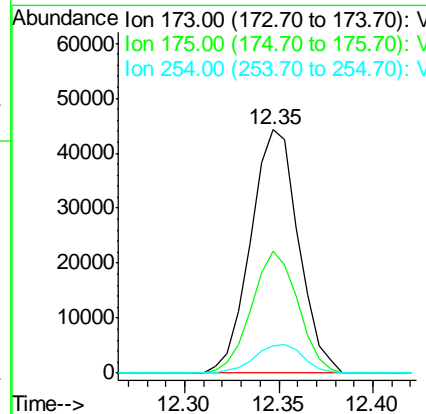
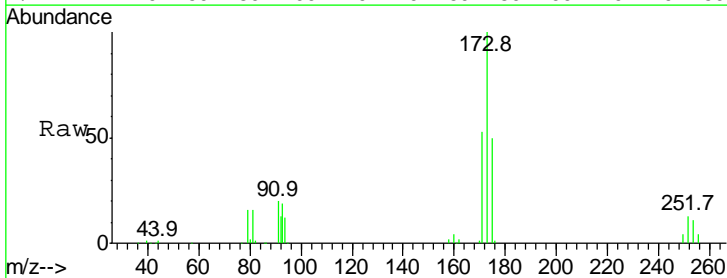
Instrument :
 MSVOA_W
 ClientSampled :
 VICV02

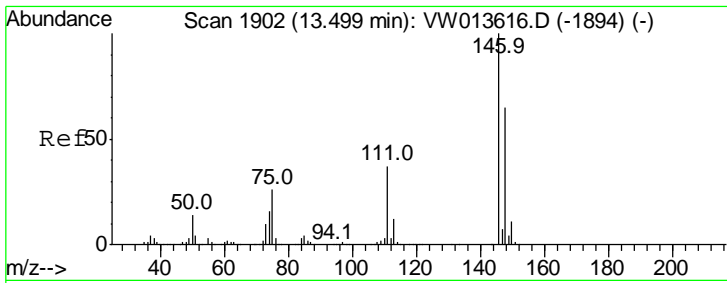
Tgt Ion: 75 Resp: 94189
 Ion Ratio Lower Upper
 75 100
 77 32.5 26.4 39.6



#62
 Bromoform
 Concen: 24.489 ug/L
 RT: 12.35 min Scan# 1713
 Delta R.T. -0.00 min
 Lab File: VW013620.D
 Acq: 18 Oct 2019 13:16

Tgt Ion: 173 Resp: 77862
 Ion Ratio Lower Upper
 173 100
 175 48.7 39.1 58.7
 254 11.9 9.6 14.4

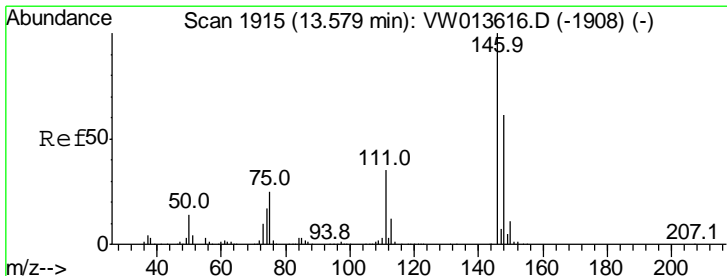
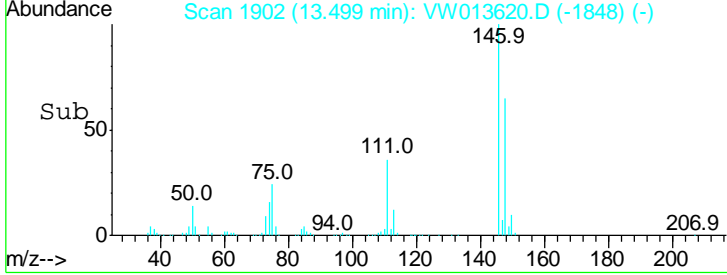
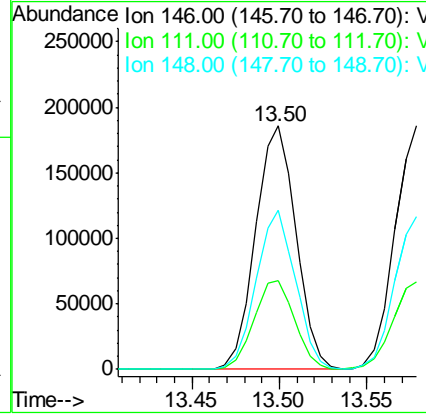
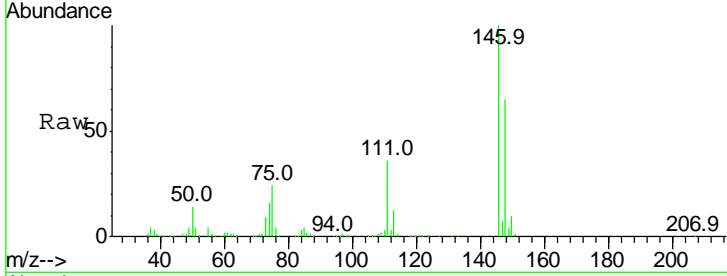




#63
 1,3-Dichlorobenzene
 Concen: 23.713 ug/L
 RT: 13.50 min Scan# 1902
 Delta R.T. -0.00 min
 Lab File: VW013620.D
 Acq: 18 Oct 2019 13:16

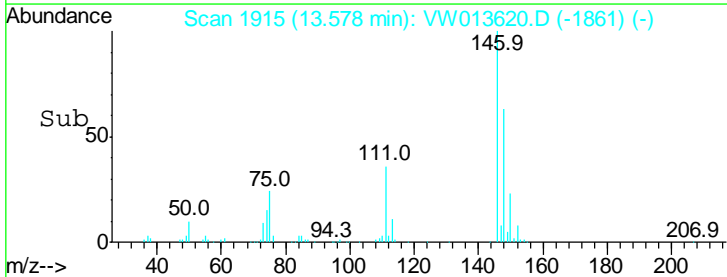
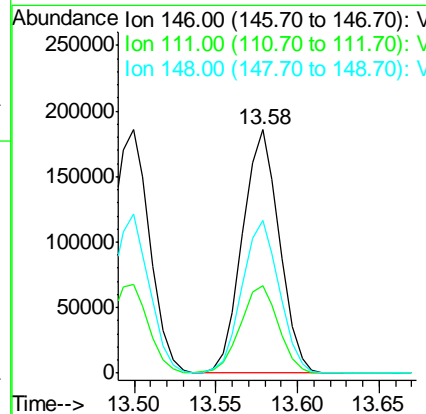
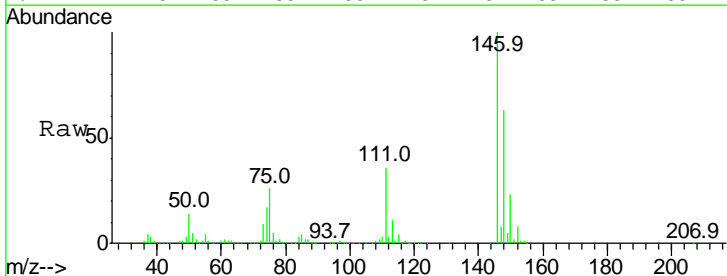
Instrument : MSVOA_W
 ClientSampled : VICV02

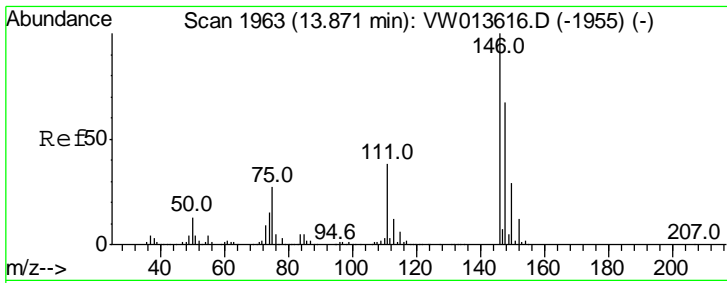
Tgt Ion	Resp	Lower	Upper
146	100		
111	36.4	26.1	48.5
148	65.2	45.8	85.2



#64
 1,4-Dichlorobenzene
 Concen: 23.264 ug/L
 RT: 13.58 min Scan# 1915
 Delta R.T. -0.00 min
 Lab File: VW013620.D
 Acq: 18 Oct 2019 13:16

Tgt Ion	Resp	Lower	Upper
146	100		
111	35.9	24.8	46.0
148	63.0	43.0	79.8

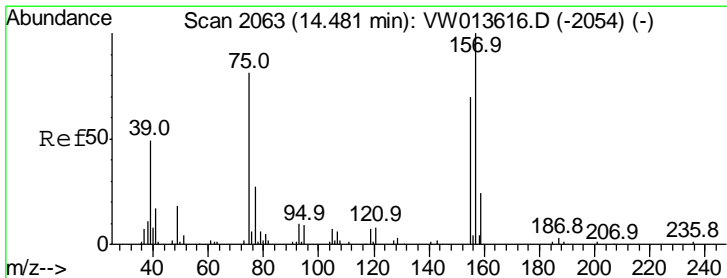
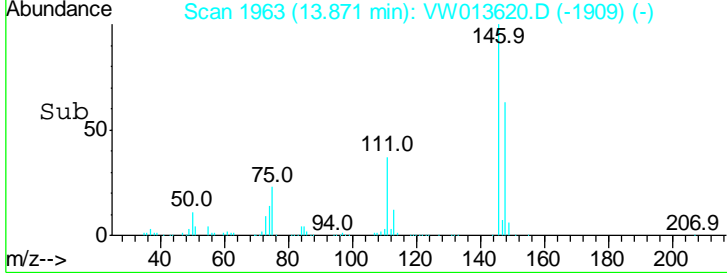
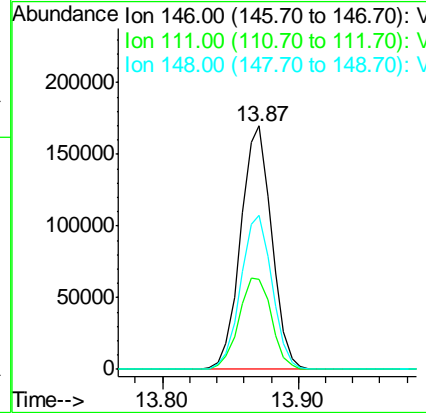
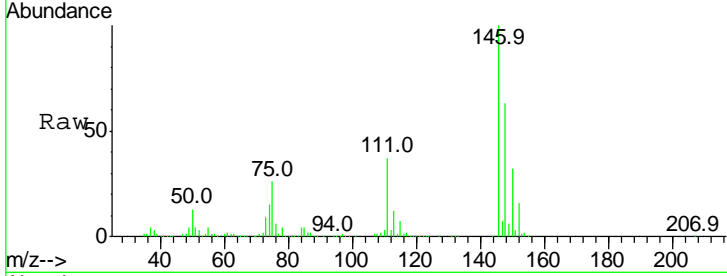




#65
 1,2-Dichlorobenzene
 Concen: 23.639 ug/L
 RT: 13.87 min Scan# 1963
 Delta R.T. -0.00 min
 Lab File: VW013620.D
 Acq: 18 Oct 2019 13:16

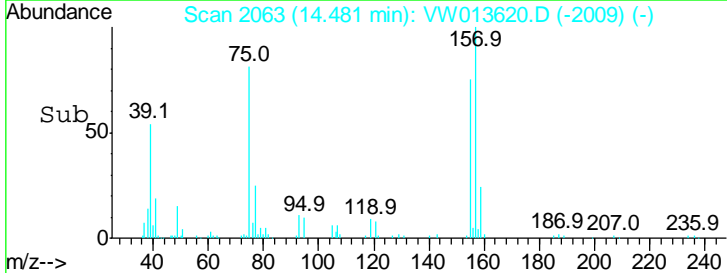
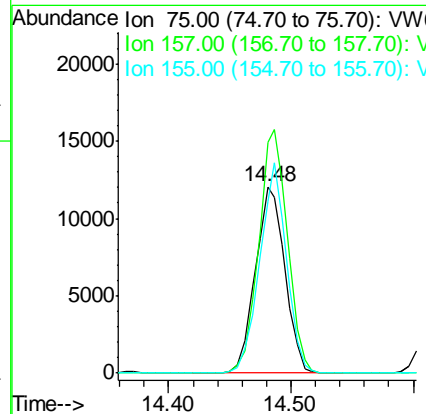
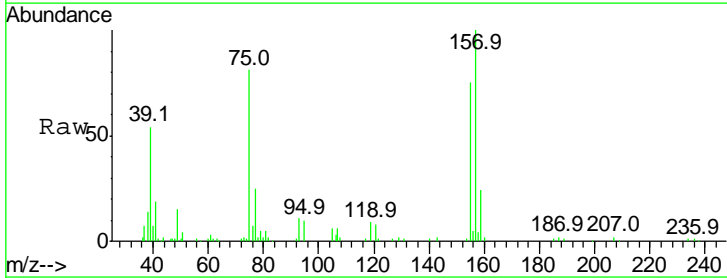
Instrument :
 MSVOA_W
 ClientSampled :
 VICV02

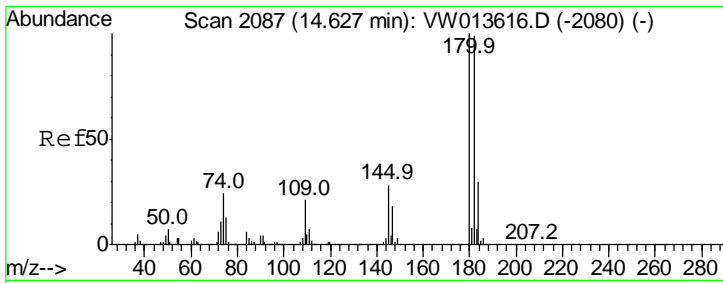
Tgt Ion	Resp	Lower	Upper
146	100		
111	37.2	30.7	46.1
148	63.3	53.3	79.9



#66
 1,2-Dibromo-3-chloropropane
 Concen: 25.795 ug/L
 RT: 14.48 min Scan# 2063
 Delta R.T. -0.00 min
 Lab File: VW013620.D
 Acq: 18 Oct 2019 13:16

Tgt Ion	Resp	Lower	Upper
75	100		
157	123.6	99.4	149.0
155	92.4	69.7	104.5

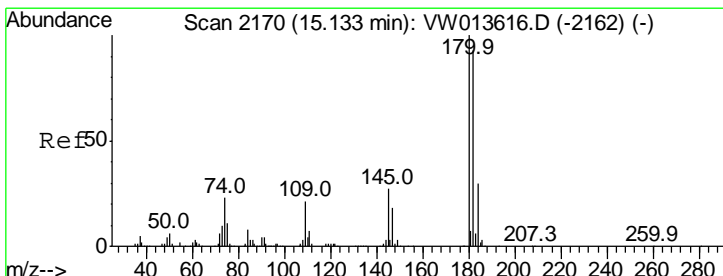
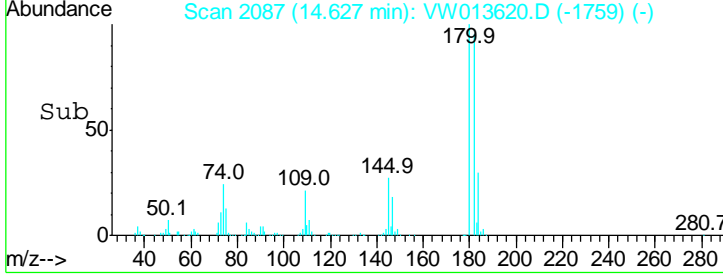
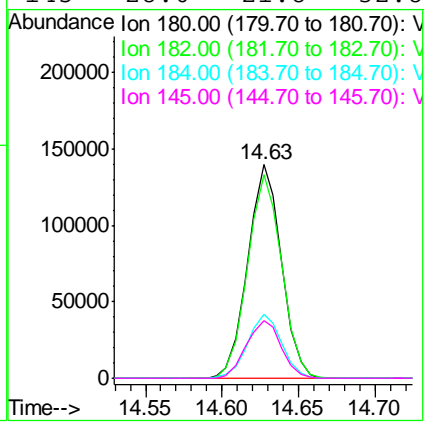
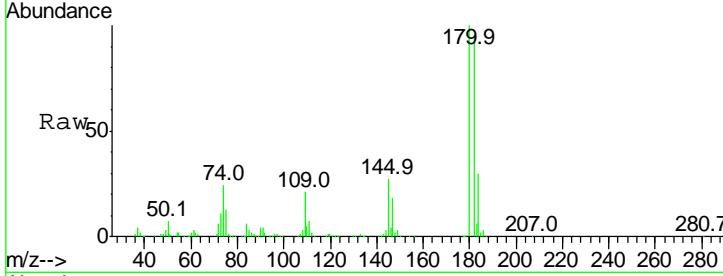




#67
 1,3,5-Trichlorobenzene
 Concen: 22.794 ug/L
 RT: 14.63 min Scan# 2087
 Delta R.T. -0.00 min
 Lab File: VW013620.D
 Acq: 18 Oct 2019 13:16

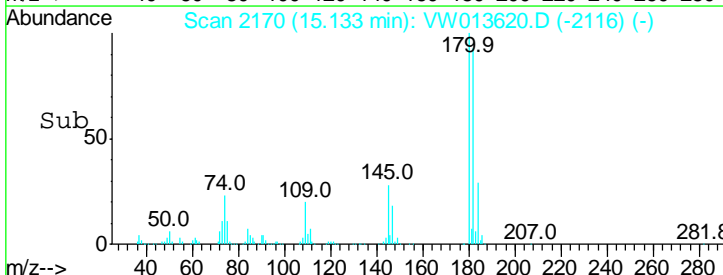
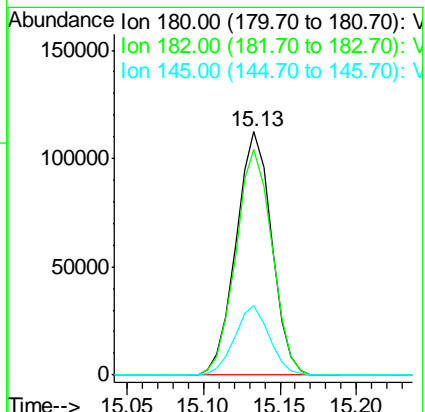
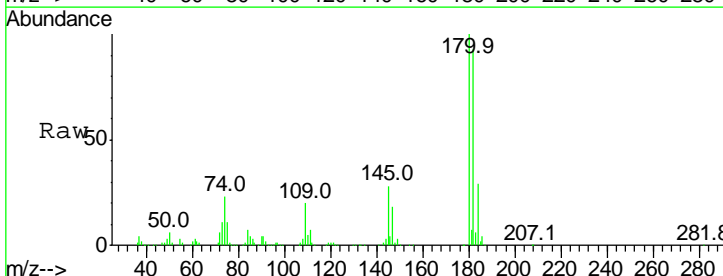
Instrument : MSVOA_W
 ClientSampled : VICV02

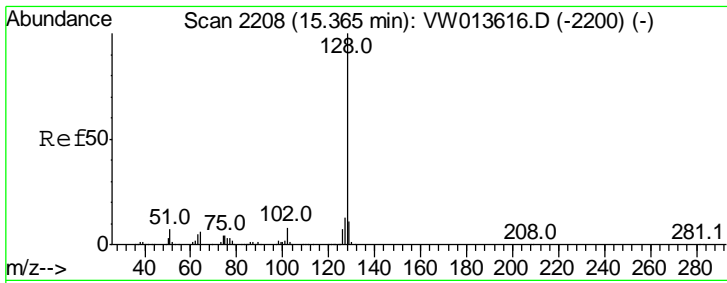
Tgt Ion	Resp	Lower	Upper
180	100		
182	96.7	76.2	114.4
184	30.5	24.1	36.1
145	28.0	21.8	32.8



#68
 1,2,4-trichlorobenzene
 Concen: 22.915 ug/L
 RT: 15.13 min Scan# 2170
 Delta R.T. -0.00 min
 Lab File: VW013620.D
 Acq: 18 Oct 2019 13:16

Tgt Ion	Resp	Lower	Upper
180	100		
182	94.1	75.8	113.8
145	27.7	22.6	34.0

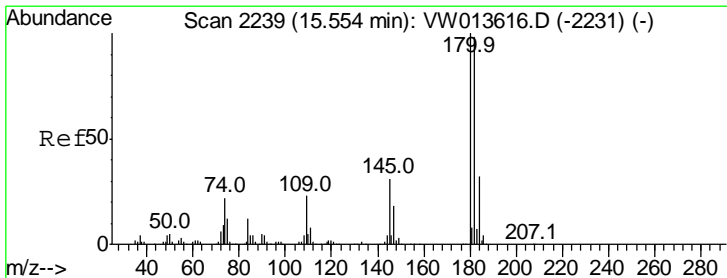
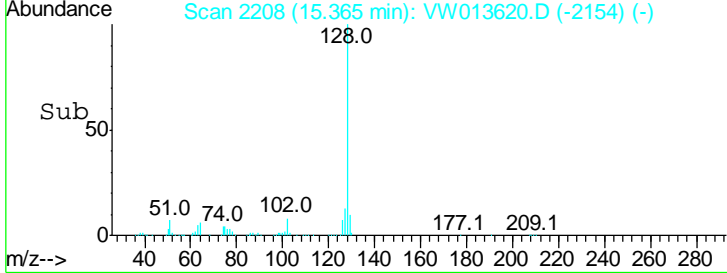
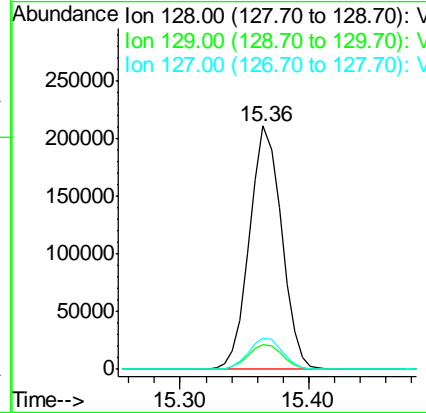
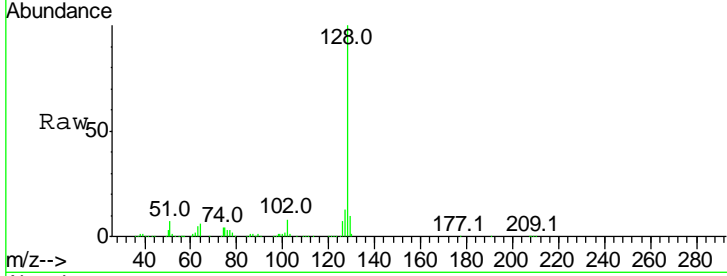




#69
 Naphthalene
 Concen: 25.245 ug/L
 RT: 15.36 min Scan# 2208
 Delta R.T. -0.00 min
 Lab File: VW013620.D
 Acq: 18 Oct 2019 13:16

Instrument :
 MSVOA_W
 ClientSampled :
 VICV02

Tgt Ion	Resp	Lower	Upper
128	100		
129	11.0	8.6	13.0
127	13.4	10.5	15.7



#70
 1,2,3-Trichlorobenzene
 Concen: 23.318 ug/L
 RT: 15.55 min Scan# 2239
 Delta R.T. -0.00 min
 Lab File: VW013620.D
 Acq: 18 Oct 2019 13:16

Tgt Ion	Resp	Lower	Upper
180	100		
182	95.4	77.0	115.4
145	30.0	24.1	36.1

