

Data Path : Z:\voasrv\HPCHEM1\MSVOA_W\Data\VW101821\
 Data File : VW020573.D
 Acq On : 18 Oct 2021 20:11
 Operator : SY/VA
 Sample : M4212-07
 Misc : 4.19g/10mL/MSVOA_W/SOIL
 ALS Vial : 1 Sample Multiplier: 1

Instrument :
 MSVOA_W
 ClientSampleId :
 JDGE9

Integration Parameters: LSCINT.P
 Integrator: RTE
 Smoothing : OFF
 Sampling : 1
 Start Thrs : 0.2
 Stop Thrs : 0
 Filtering: 5
 Min Area: 0 % of largest Peak
 Max Peaks: 100
 Peak Location: TOP

If leading or trailing edge < 100 prefer < Baseline drop else tangent >
 Peak separation: 5

Method : Z:\voasrv\HPCHEM1\MSVOA_W\Method\SFAMWLM100821SMA.M
 Title : SFAM01.0

Signal : TIC: VW020573.D\data.ms

peak #	R.T. min	first scan	max scan	last scan	PK TY	peak height	corr. area	corr. % max.	% of total
1	2.343	67	72	81	rVB	67040	103099	10.83%	1.496%
2	2.879	153	160	170	rVB	32408	66364	6.97%	0.963%
3	3.666	287	289	290	rBV	172	128	0.01%	0.002%
4	3.763	302	305	306	rBV	160	166	0.02%	0.002%
5	3.830	314	316	320	rVB	148	134	0.01%	0.002%
6	4.013	334	346	362	rBV	88424	269667	28.32%	3.914%
7	4.361	401	403	406	rBV2	144	147	0.02%	0.002%
8	4.385	406	407	410	rBV2	94	110	0.01%	0.002%
9	4.422	410	413	415	rVB3	128	129	0.01%	0.002%
10	4.440	415	416	419	rBV	150	116	0.01%	0.002%
11	4.489	421	424	425	rBV2	101	124	0.01%	0.002%
12	4.592	438	441	442	rBV2	242	238	0.02%	0.003%
13	4.915	482	494	509	rVB	24624	81744	8.59%	1.186%
14	5.117	523	527	528	rBV2	204	244	0.03%	0.004%
15	5.147	531	532	535	rVB2	80	82	0.01%	0.001%
16	5.184	535	538	542	rBV2	189	350	0.04%	0.005%
17	5.263	549	551	552	rVB	136	86	0.01%	0.001%
18	5.312	556	559	561	rBV2	119	152	0.02%	0.002%
19	5.360	564	567	569	rBV2	94	106	0.01%	0.002%
20	5.397	569	573	575	rVB2	123	132	0.01%	0.002%
21	5.543	596	597	600	rVB	182	99	0.01%	0.001%
22	5.604	606	607	609	rBV2	98	88	0.01%	0.001%
23	5.830	643	644	649	rBV2	68	91	0.01%	0.001%
24	5.934	652	661	670	rBV2	2705	8116	0.85%	0.118%
25	6.025	673	676	678	rBV	116	111	0.01%	0.002%
26	6.098	686	688	693	rBV2	140	199	0.02%	0.003%
27	6.702	785	787	789	rVB2	108	90	0.01%	0.001%
28	6.769	797	798	800	rBV2	93	91	0.01%	0.001%
29	6.927	818	824	825	rBV2	127	191	0.02%	0.003%
30	7.080	840	849	869	rBV	30880	89024	9.35%	1.292%
31	7.403	901	902	905	rBV	111	87	0.01%	0.001%
32	7.445	908	909	912	rBV	138	142	0.01%	0.002%
33	7.543	920	925	929	rVB2	455	636	0.07%	0.009%
34	7.647	932	942	956	rBV	168323	408404	42.89%	5.928%
35	7.763	959	961	962	rBV	190	140	0.01%	0.002%
36	8.104	1014	1017	1020	rBV2	136	135	0.01%	0.002%

Data Path : Z:\voasrv\HPCHEM1\MSVOA_W\Data\VW101821\
 Data File : VW020573.D
 Acq On : 18 Oct 2021 20:11
 Operator : SY/VA
 Sample : M4212-07
 Misc : 4.19g/10mL/MSVOA_W/SOIL
 ALS Vial : 1 Sample Multiplier: 1

Instrument :
 MSVOA_W
 ClientSampleId :
 JDGE9

Integration Parameters: LSCINT.P

Integrator: RTE
 Smoothing : OFF
 Sampling : 1
 Start Thrs : 0.2
 Stop Thrs : 0

Filtering: 5
 Min Area: 0 % of largest Peak
 Max Peaks: 100
 Peak Location: TOP

If leading or trailing edge < 100 prefer < Baseline drop else tangent >
 Peak separation: 5

Method : Z:\voasrv\HPCHEM1\MSVOA_W\Method\SFAMWLM100821SMA.M
 Title : SFAM01.0

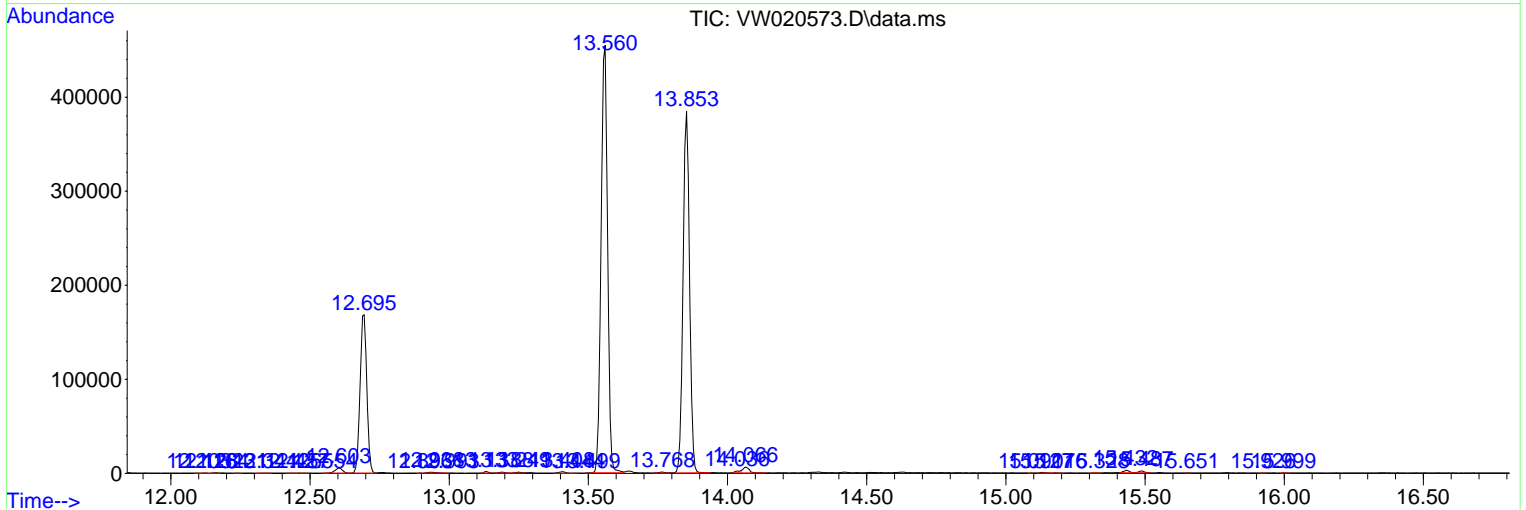
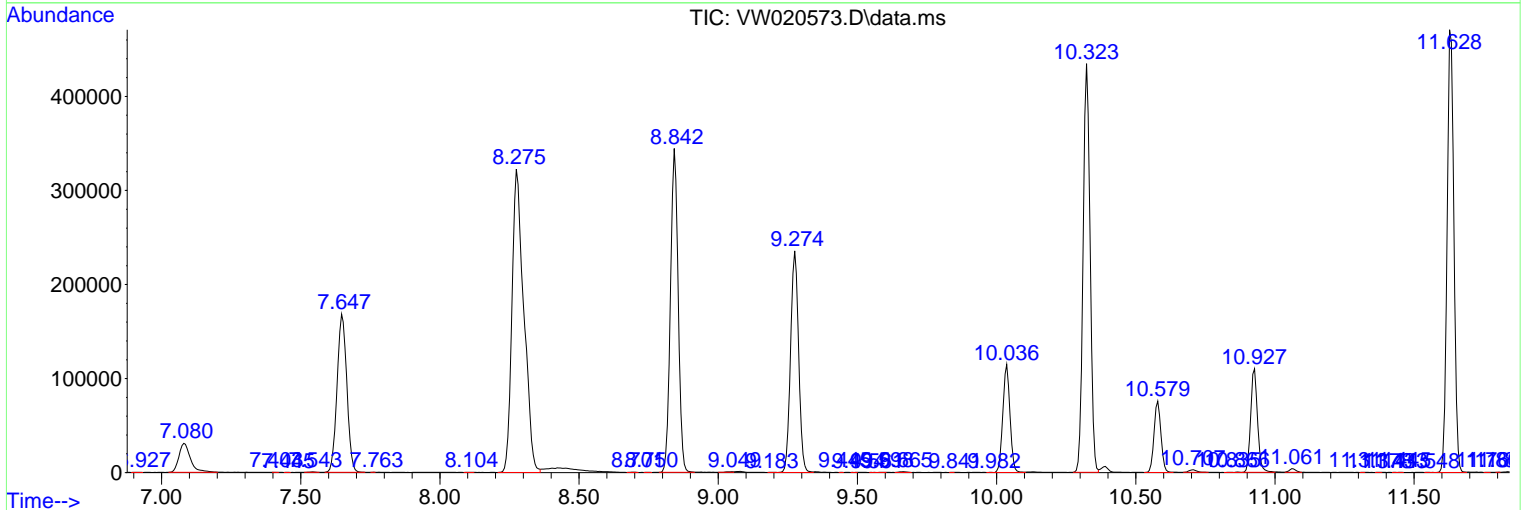
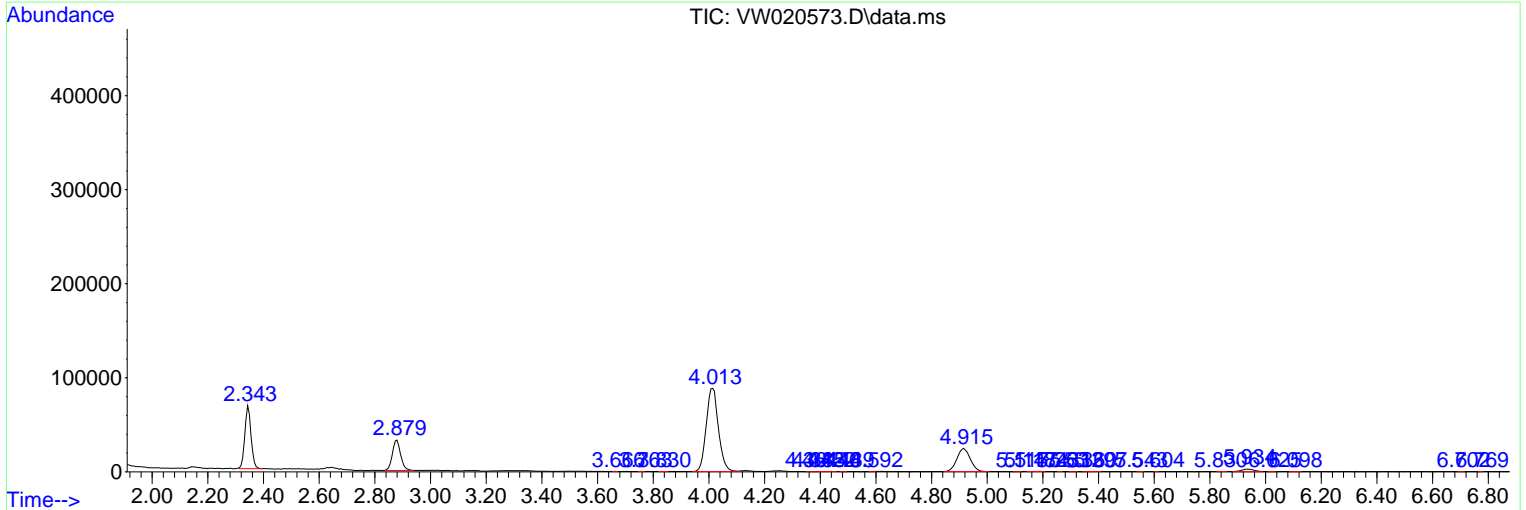
37	8.275	1034	1045	1059	rBV2	322387	952132	100.00%	13.819%
38	8.701	1110	1115	1117	rVB2	214	353	0.04%	0.005%
39	8.750	1120	1123	1125	rBV2	108	120	0.01%	0.002%
40	8.842	1129	1138	1150	rBV	344351	662022	69.53%	9.609%
41	9.049	1164	1172	1173	rBV4	694	1243	0.13%	0.018%
42	9.183	1193	1194	1199	rBV2	89	157	0.02%	0.002%
43	9.274	1199	1209	1220	rBV	235565	472992	49.68%	6.865%
44	9.445	1235	1237	1238	rVV	147	86	0.01%	0.001%
45	9.494	1242	1245	1246	rBV2	124	119	0.01%	0.002%
46	9.561	1253	1256	1257	rBV	113	95	0.01%	0.001%
47	9.598	1257	1262	1263	rBV2	110	135	0.01%	0.002%
48	9.665	1268	1273	1278	rVB5	740	1468	0.15%	0.021%
49	9.841	1300	1302	1303	rBV	82	83	0.01%	0.001%
50	9.982	1322	1325	1326	rBV	134	88	0.01%	0.001%
51	10.036	1326	1334	1345	rBV	114818	203878	21.41%	2.959%
52	10.323	1373	1381	1388	rBV	434525	754505	79.24%	10.951%
53	10.579	1415	1423	1432	rBV	75860	130376	13.69%	1.892%
54	10.707	1438	1444	1453	rBV2	2706	5140	0.54%	0.075%
55	10.835	1462	1465	1468	rBV2	142	199	0.02%	0.003%
56	10.866	1468	1470	1473	rBV2	439	443	0.05%	0.006%
57	10.927	1473	1480	1492	rBV	110103	187582	19.70%	2.723%
58	11.061	1498	1502	1508	rVB3	3823	5922	0.62%	0.086%
59	11.311	1542	1543	1545	rBV	149	93	0.01%	0.001%
60	11.378	1551	1554	1555	rBV3	115	120	0.01%	0.002%
61	11.433	1561	1563	1564	rBV2	117	83	0.01%	0.001%
62	11.445	1564	1565	1568	rBV2	133	102	0.01%	0.001%
63	11.548	1580	1582	1586	rVB2	122	130	0.01%	0.002%
64	11.628	1586	1595	1605	rBV	470642	796060	83.61%	11.554%
65	11.768	1615	1618	1619	rBV2	149	162	0.02%	0.002%
66	11.804	1622	1624	1625	rVV2	153	104	0.01%	0.002%
67	11.835	1625	1629	1634	rVB3	574	1109	0.12%	0.016%
68	12.103	1670	1673	1674	rVB	164	118	0.01%	0.002%
69	12.128	1674	1677	1678	rBV2	205	201	0.02%	0.003%
70	12.164	1678	1683	1685	rBV2	473	569	0.06%	0.008%
71	12.231	1693	1694	1698	rBV	174	169	0.02%	0.002%
72	12.341	1706	1712	1715	rBV2	111	236	0.02%	0.003%
73	12.426	1724	1726	1730	rVB	153	162	0.02%	0.002%
74	12.457	1730	1731	1737	rBV3	211	337	0.04%	0.005%
75	12.554	1745	1747	1748	rBV	95	97	0.01%	0.001%
76	12.603	1748	1755	1762	rVB2	5559	10013	1.05%	0.145%

Data Path : Z:\voasrv\HPCHEM1\MSVOA_W\Data\VW101821\
 Data File : VW020573.D
 Acq On : 18 Oct 2021 20:11
 Operator : SY/VA
 Sample : M4212-07
 Misc : 4.19g/10mL/MSVOA_W/SOIL
 ALS Vial : 1 Sample Multiplier: 1

Instrument :
 MSVOA_W
ClientSampleId :
 JDGE9

Quant Method : Z:\voasrv\HPCHEM1\MSVOA_W\Method\SFAMWLM100821SMA.M
 Quant Title : SFAM01.0

TIC Library : C:\Database\NIST20.L
 TIC Integration Parameters: LSCINT.P



Library Search Compound Report

Data Path : Z:\voasrv\HPCHEM1\MSVOA_W\Data\VW101821\
Data File : VW020573.D
Acq On : 18 Oct 2021 20:11
Operator : SY/VA
Sample : M4212-07
Misc : 4.19g/10mL/MSVOA_W/SOIL
ALS Vial : 1 Sample Multiplier: 1

Instrument :
MSVOA_W
ClientSampleId :
JDGE9

Quant Method : Z:\voasrv\HPCHEM1\MSVOA_W\Method\SFAMWLM100821SMA.M
Quant Title : SFAM01.0

TIC Library : C:\Database\NIST20.L
TIC Integration Parameters: LSCINT.P

No Library Search Compounds Detected

Data Path : Z:\voasrv\HPCHEM1\MSVOA_W\Data\VW101821\
Data File : VW020573.D
Acq On : 18 Oct 2021 20:11
Operator : SY/VA
Sample : M4212-07
Misc : 4.19g/10mL/MSVOA_W/SOIL
ALS Vial : 1 Sample Multiplier: 1

Instrument :
MSVOA_W
ClientSampleId :
JDGE9

Quant Method : Z:\voasrv\HPCHEM1\MSVOA_W\Method\SFAMWLM100821SMA.M
Quant Title : SFAM01.0

TIC Library : C:\Database\NIST0.L
TIC Integration Parameters: LSCINT.P

TIC Top Hit name	RT	EstConc	Units	Response	--Internal Standard--			
					#	RT	Resp	Conc
