

Data Path : Z:\VOASRV\HPCHEM1\MSVOA W\DATA\VW101918\
 Data File : VW006241.D
 Acq On : 19 Oct 2018 22:13
 Operator : VA/AP
 Sample : J5604-03RE
 Misc : 5.00G/5ML/MSVOA W/SOIL
 ALS Vial : 21 Sample Multiplier: 1

Instrument :
 MSVOA_W
 ClientSampled :
 MS-VB-25868-BOX-1RE

Quant Time: Oct 20 03:47:49 2018
 Quant Method : Z:\VOASRV\HPCHEM1\MSVOA_W\METHOD\82W101518S.M
 Quant Title : SW846 8260
 QLast Update : Thu Oct 18 17:01:24 2018
 Response via : Initial Calibration

Internal Standards	R.T.	QIon	Response	Conc	Units	Dev(Min)
1) Pentafluorobenzene	7.95	168	155344	50.00	ug/l	0.00
34) 1,4-Difluorobenzene	8.85	114	248008	50.00	ug/l	0.00
63) Chlorobenzene-d5	11.63	117	141854	50.00	ug/l	0.00
72) 1,4-Dichlorobenzene-d4	13.57	152	40767	50.00	ug/l	0.00

System Monitoring Compounds

33) 1,2-Dichloroethane-d4	8.30	65	91569	71.10	ug/l	0.00
Spiked Amount	50.000		Recovery	=	142.20%	
35) Dibromofluoromethane	7.88	113	82651	56.40	ug/l	0.00
Spiked Amount	50.000		Recovery	=	112.80%	
50) Toluene-d8	10.33	98	200312	35.93	ug/l	0.00
Spiked Amount	50.000		Recovery	=	71.86%	
62) 4-Bromofluorobenzene	12.62	95	49428	23.60	ug/l	0.00
Spiked Amount	50.000		Recovery	=	47.20%	

Target Compounds

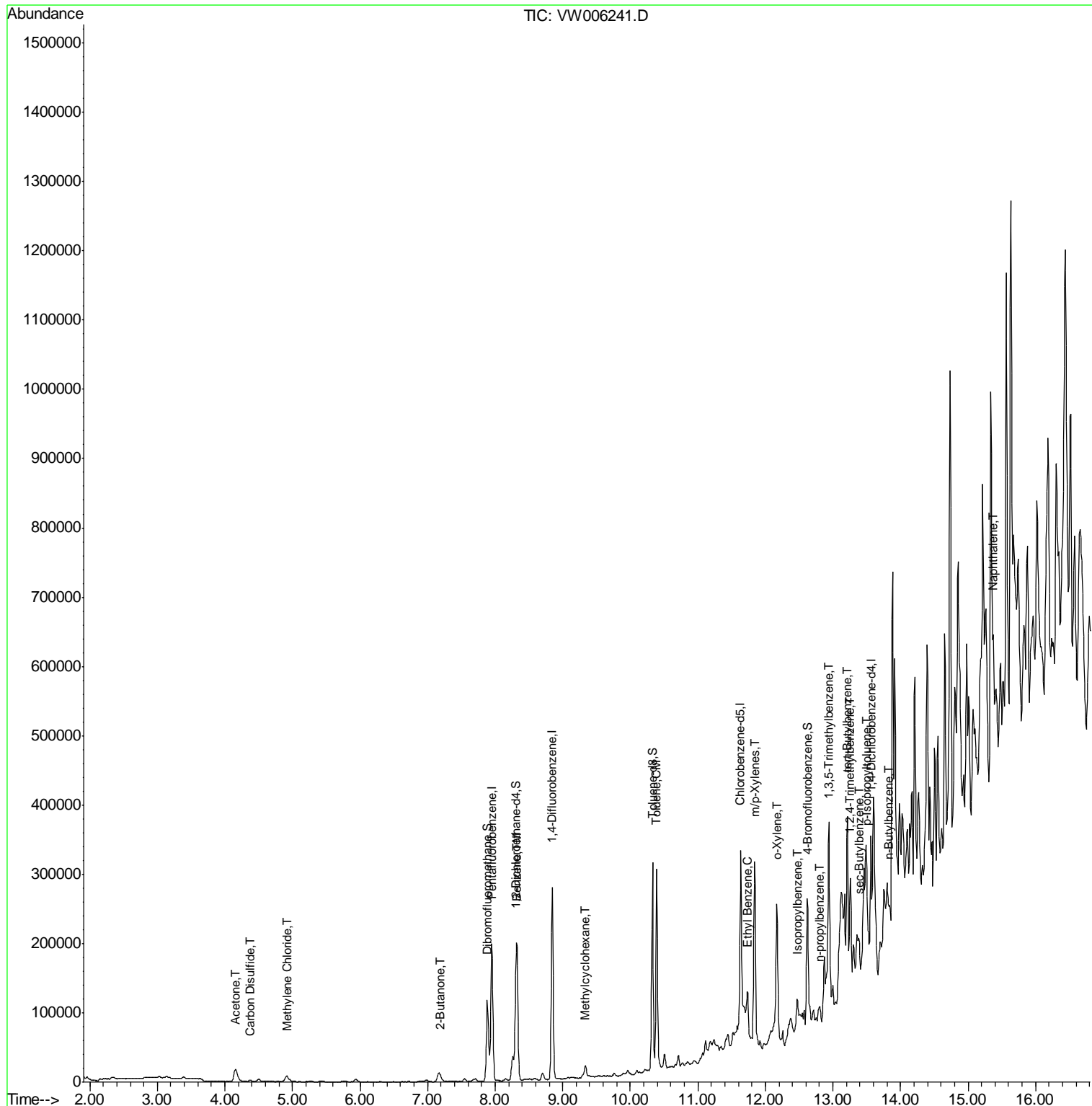
						Qvalue
16) Acetone	4.15	43	43344	174.948	ug/l	99
17) Carbon Disulfide	4.37	76	4168	1.064	ug/l	99
20) Methylene Chloride	4.92	84	6988	3.618	ug/l	96
25) 2-Butanone	7.19	43	8756	25.167	ug/l	95
39) Methylcyclohexane	9.34	83	7534	2.479	ug/l	96
40) Benzene	8.33	78	125784	20.060	ug/l	99
52) Toluene	10.39	92	123605	29.402	ug/l	98
67) Ethyl Benzene	11.74	91	35391	6.725	ug/l	96
68) m/p-Xylenes	11.84	106	72834	35.015	ug/l	100
69) o-Xylene	12.17	106	48927	24.681	ug/l	99
73) Isopropylbenzene	12.47	105	21236	7.373	ug/l	93
78) n-propylbenzene	12.81	91	19598	5.849	ug/l	97
80) 1,3,5-Trimethylbenzene	12.95	105	39119	16.112	ug/l	98
83) tert-Butylbenzene	13.21	119	123288	56.755	ug/l	95
84) 1,2,4-Trimethylbenzene	13.26	105	90869	36.986	ug/l	100
85) sec-Butylbenzene	13.39	105	13126	4.277	ug/l #	77
86) p-Isopropyltoluene	13.51	119	30894	11.130	ug/l	92
89) n-Butylbenzene	13.83	91	14094	5.552	ug/l #	79
95) Naphthalene	15.38	128	168581	105.173	ug/l #	92

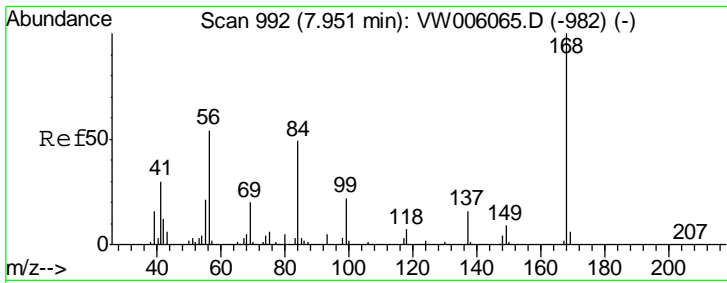
(#) = qualifier out of range (m) = manual integration (+) = signals summed

Data Path : Z:\VOASRV\HPCHEM1\MSVOA W\DATA\VW101918\
 Data File : VW006241.D
 Acq On : 19 Oct 2018 22:13
 Operator : VA/AP
 Sample : J5604-03RE
 Misc : 5.00G/5ML/MSVOA W/SOIL
 ALS Vial : 21 Sample Multiplier: 1

Instrument :
 MSVOA_W
Client Sampled :
 MS-VB-25868-BOX-1RE

Quant Time: Oct 20 03:47:49 2018
 Quant Method : Z:\VOASRV\HPCHEM1\MSVOA_W\METHOD\82W101518S.M
 Quant Title : SW846 8260
 QLast Update : Thu Oct 18 17:01:24 2018
 Response via : Initial Calibration

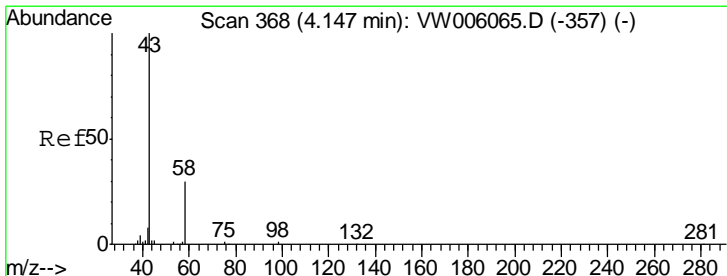
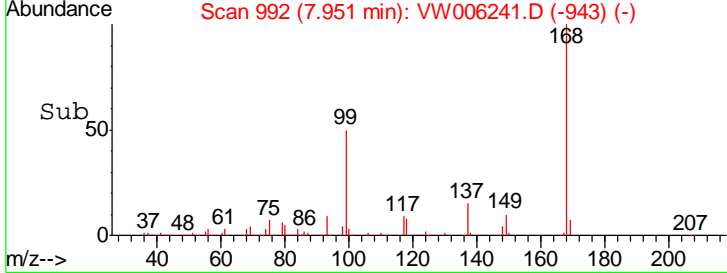
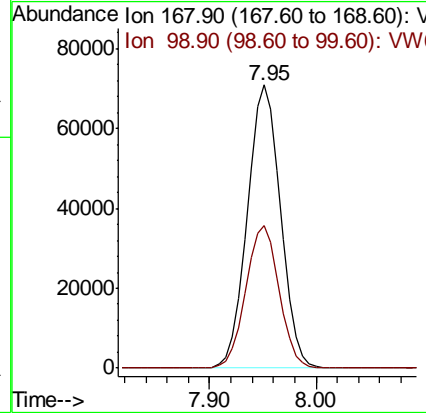
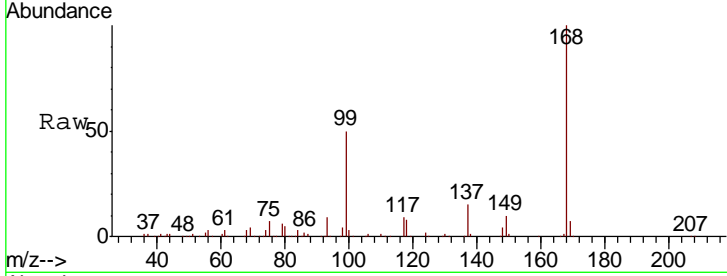




#1
 Pentafluorobenzene
 Concen: 50.000 ug/l
 RT: 7.95 min Scan# 992
 Delta R.T. -0.00 min
 Lab File: VW006241.D
 Acq: 19 Oct 2018 22:13

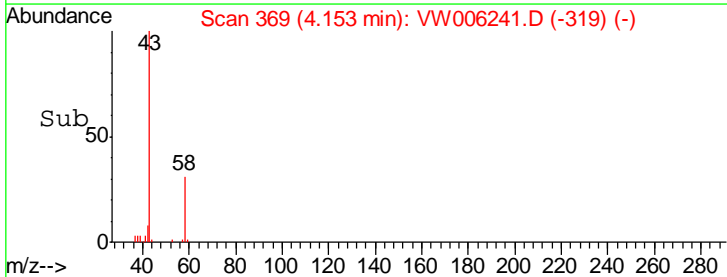
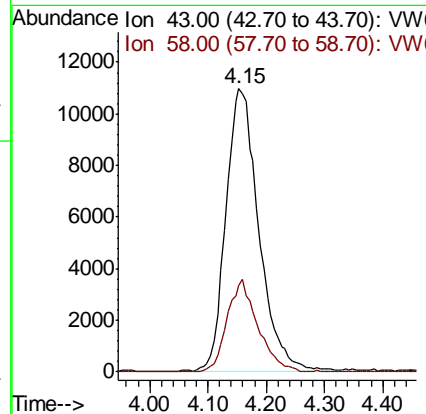
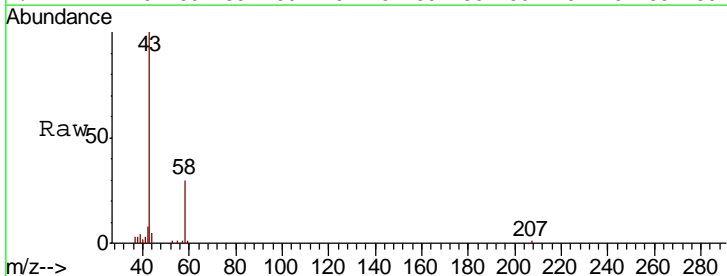
Instrument : MSVOA_W
 ClientSampled : MS-VB-25868-BOX-1RE

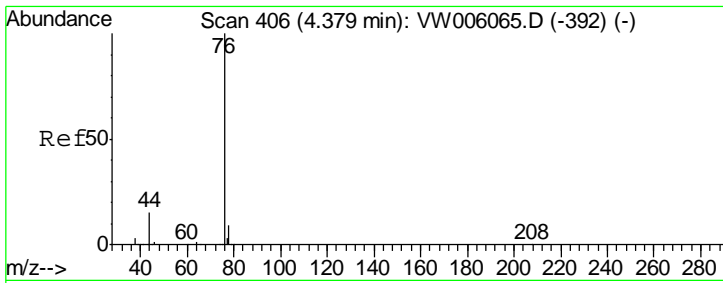
Tgt Ion	Resp	Lower	Upper
168	155344		
99	50.3	39.9	59.9



#16
 Acetone
 Concen: 174.948 ug/l
 RT: 4.15 min Scan# 369
 Delta R.T. 0.01 min
 Lab File: VW006241.D
 Acq: 19 Oct 2018 22:13

Tgt Ion	Resp	Lower	Upper
43	43344		
58	30.4	24.0	36.0

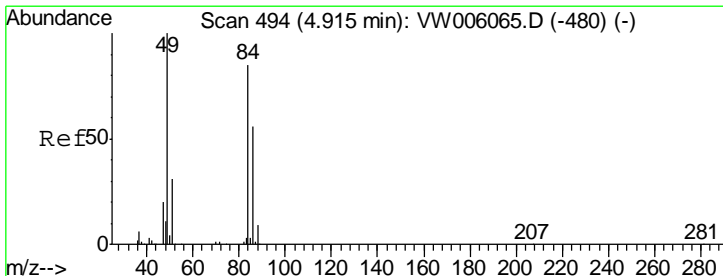
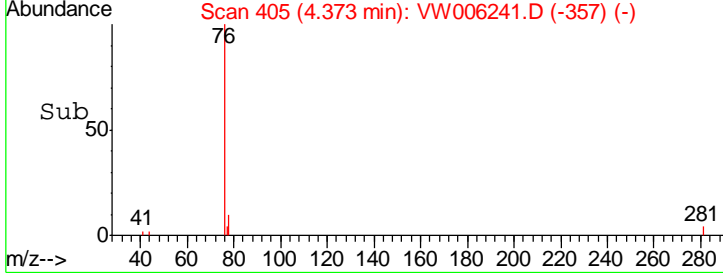
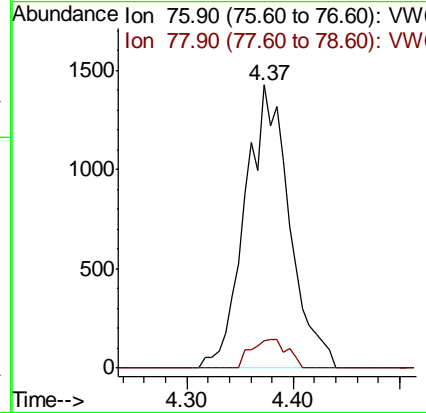
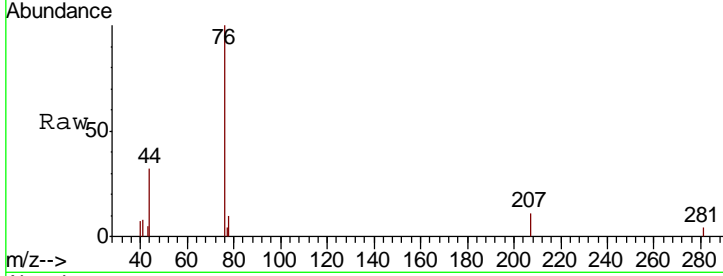




#17
 Carbon Disulfide
 Concen: 1.064 ug/l
 RT: 4.37 min Scan# 405
 Delta R.T. -0.01 min
 Lab File: VW006241.D
 Acq: 19 Oct 2018 22:13

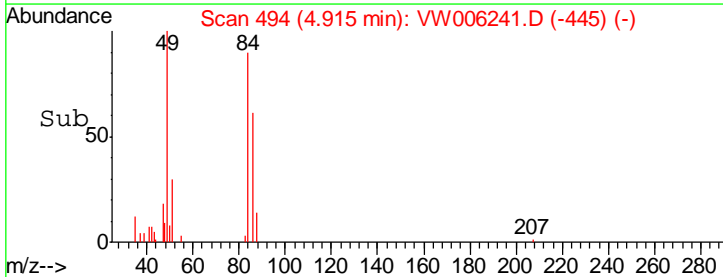
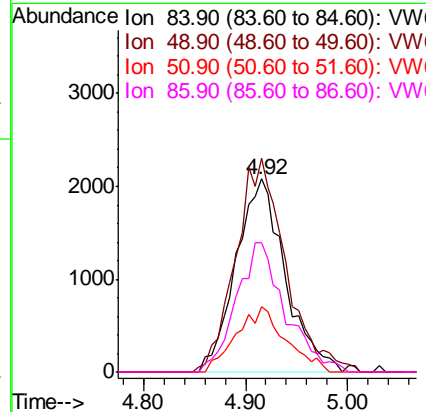
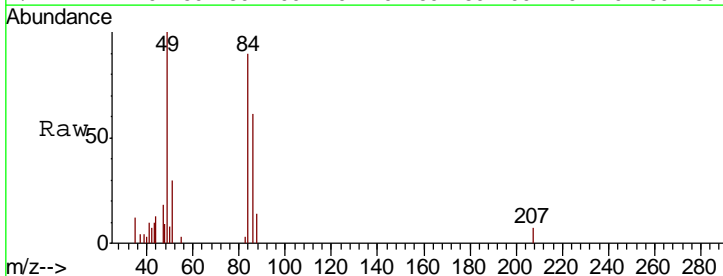
Instrument :
 MSVOA_W
ClientSampled :
 MS-VB-25868-BOX-1RE

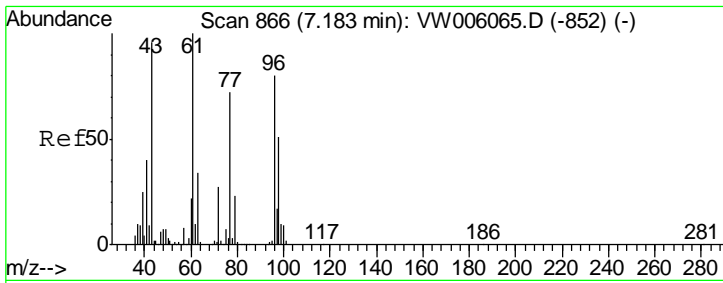
Tgt Ion	Resp	Lower	Upper
76	100		
78	9.8	7.5	11.3



#20
 Methylene Chloride
 Concen: 3.618 ug/l
 RT: 4.92 min Scan# 494
 Delta R.T. 0.00 min
 Lab File: VW006241.D
 Acq: 19 Oct 2018 22:13

Tgt Ion	Resp	Lower	Upper
84	100		
49	110.8	93.6	140.4
51	33.6	29.0	43.4
86	67.3	52.6	79.0

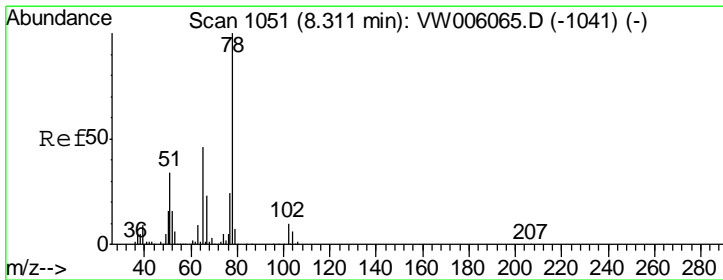
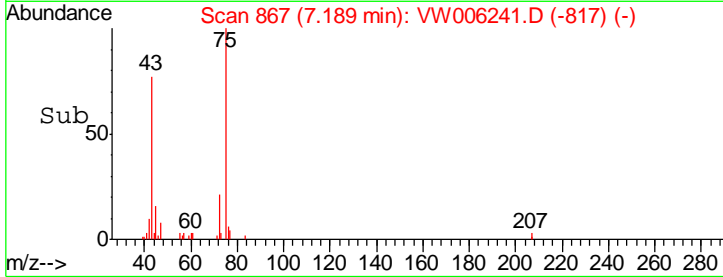
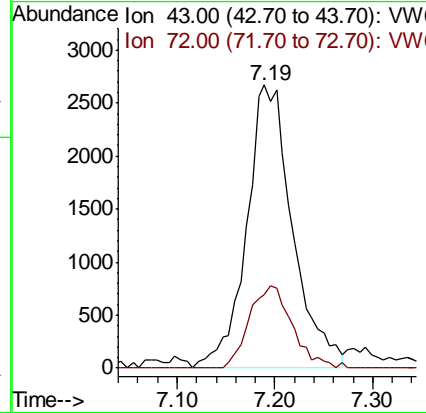
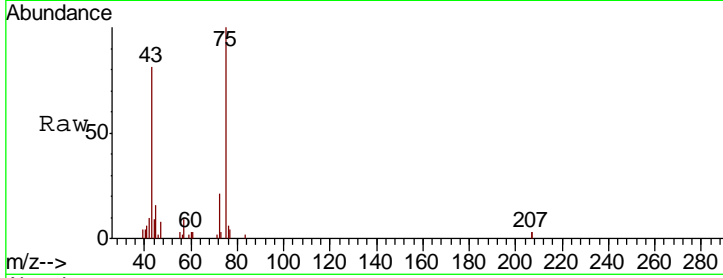




#25
 2-Butanone
 Concen: 25.167 ug/l
 RT: 7.19 min Scan# 867
 Delta R.T. 0.01 min
 Lab File: VW006241.D
 Acq: 19 Oct 2018 22:13

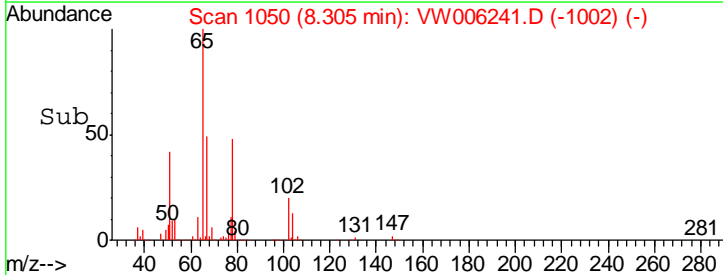
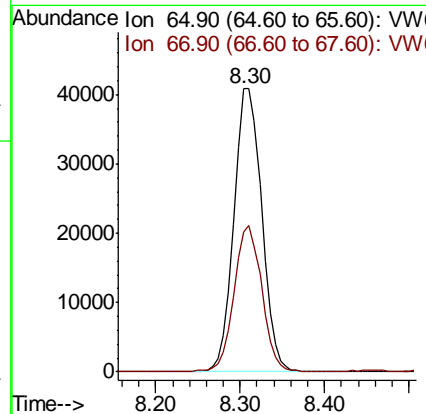
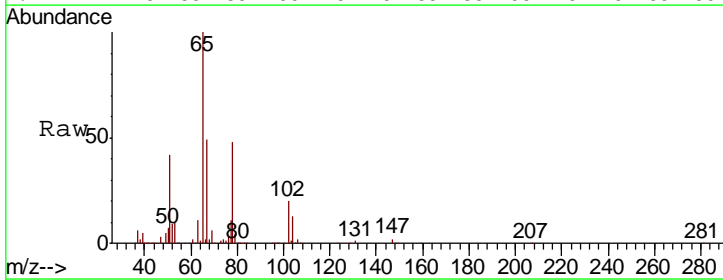
Instrument :
 MSVOA_W
ClientSampled :
 MS-VB-25868-BOX-1RE

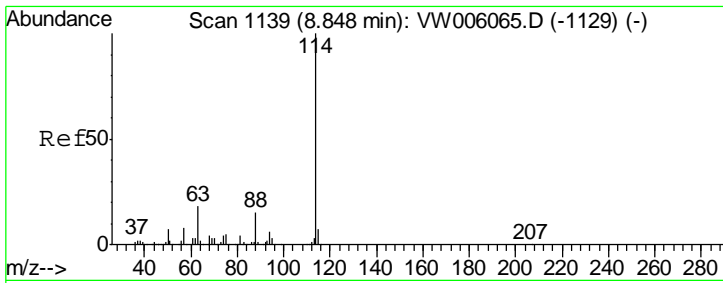
Tgt Ion: 43 Resp: 8756
 Ion Ratio Lower Upper
 43 100
 72 26.0 22.8 34.2



#33
 1,2-Dichloroethane-d4
 Concen: 71.100 ug/l
 RT: 8.30 min Scan# 1050
 Delta R.T. -0.01 min
 Lab File: VW006241.D
 Acq: 19 Oct 2018 22:13

Tgt Ion: 65 Resp: 91569
 Ion Ratio Lower Upper
 65 100
 67 50.9 0.0 101.0

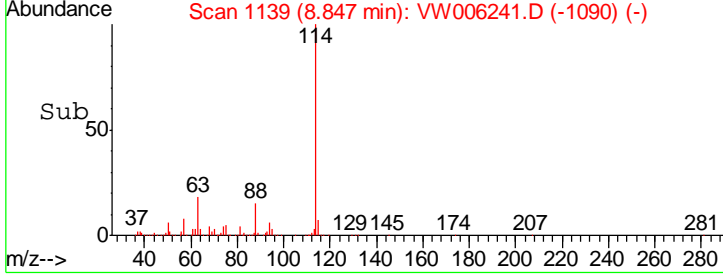
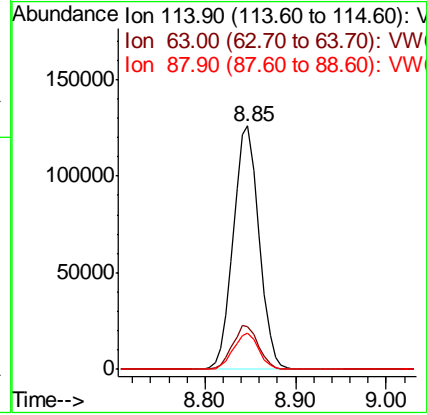
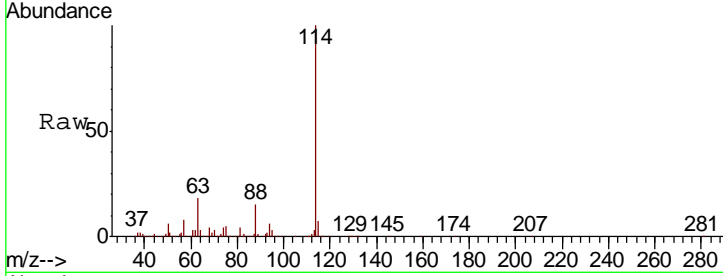




#34
 1,4-Difluorobenzene
 Concen: 50.000 ug/l
 RT: 8.85 min Scan# 1139
 Delta R.T. -0.00 min
 Lab File: VW006241.D
 Acq: 19 Oct 2018 22:13

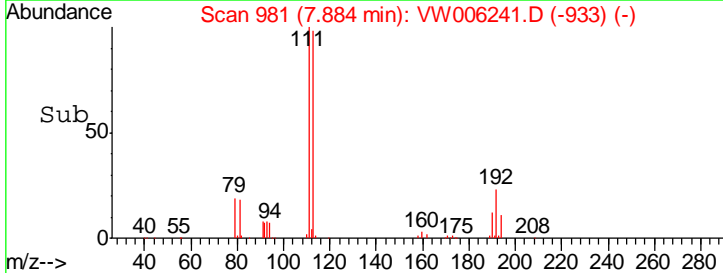
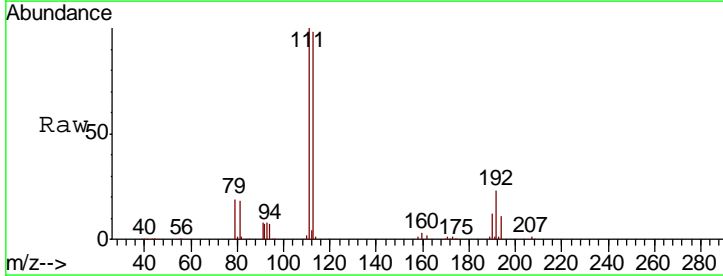
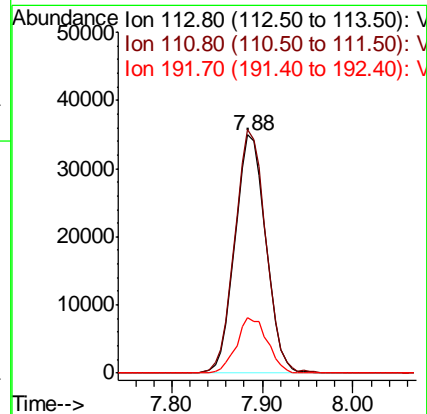
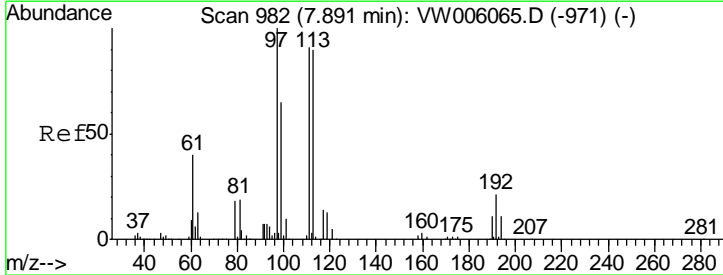
Instrument :
 MSVOA_W
ClientSampleId :
 MS-VB-25868-BOX-1RE

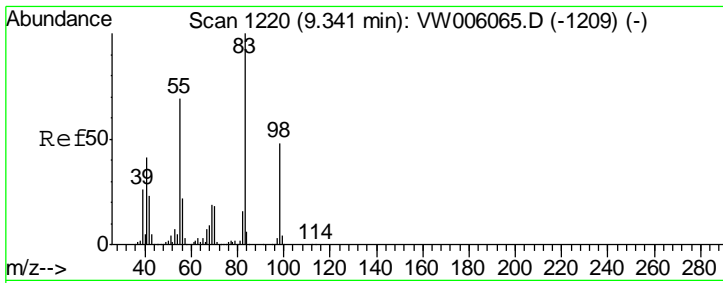
Tgt Ion	Resp	Lower	Upper
114	248008		
63	17.7	0.0	36.8
88	14.8	0.0	29.0



#35
 Dibromofluoromethane
 Concen: 56.399 ug/l
 RT: 7.88 min Scan# 981
 Delta R.T. -0.01 min
 Lab File: VW006241.D
 Acq: 19 Oct 2018 22:13

Tgt Ion	Resp	Lower	Upper
113	82651		
111	102.6	81.4	122.0
192	23.3	18.7	28.1

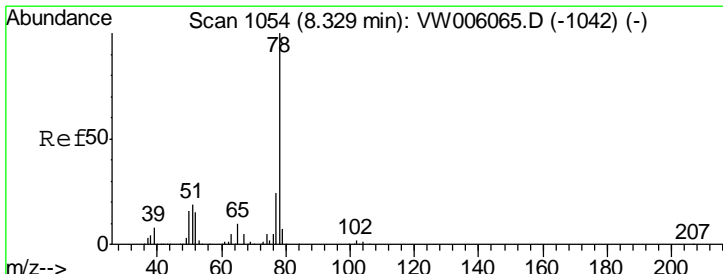
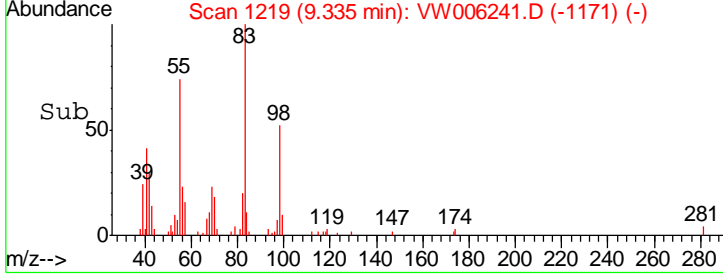
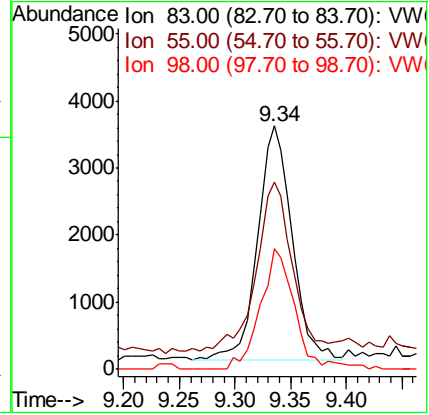
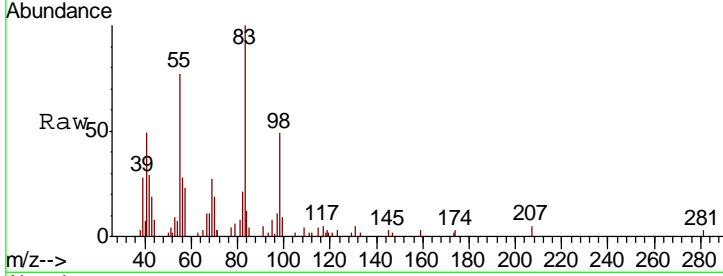




#39
 Methylcyclohexane
 Concen: 2.479 ug/l
 RT: 9.34 min Scan# 1219
 Delta R.T. -0.01 min
 Lab File: VW006241.D
 Acq: 19 Oct 2018 22:13

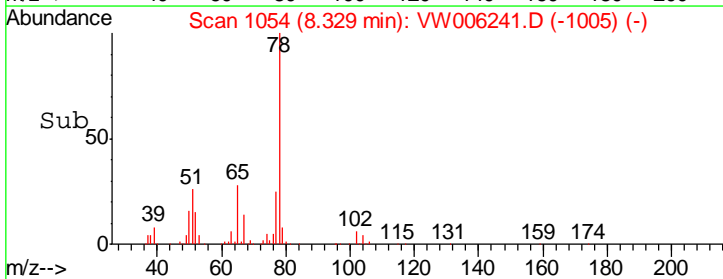
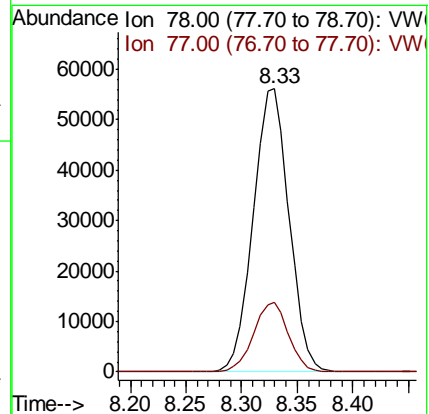
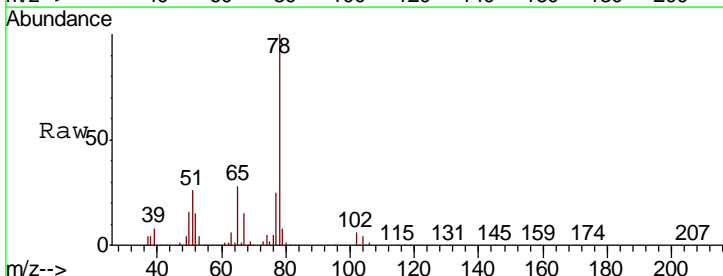
Instrument :
 MSVOA_W
ClientSampleId :
 MS-VB-25868-BOX-1RE

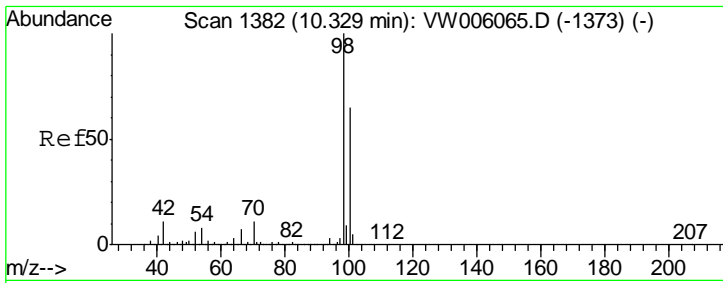
Tgt Ion	Resp	Lower	Upper
83	100		
55	71.2	55.0	82.6
98	51.5	38.6	57.8



#40
 Benzene
 Concen: 20.060 ug/l
 RT: 8.33 min Scan# 1054
 Delta R.T. -0.00 min
 Lab File: VW006241.D
 Acq: 19 Oct 2018 22:13

Tgt Ion	Resp	Lower	Upper
78	100		
77	24.6	19.4	29.0

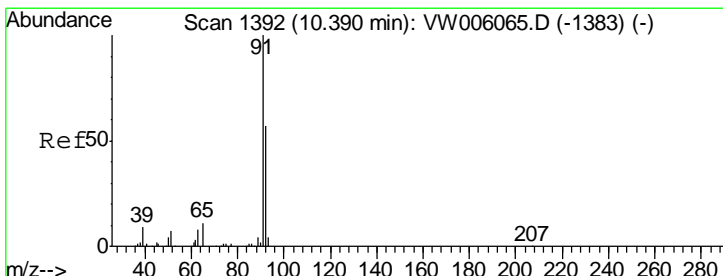
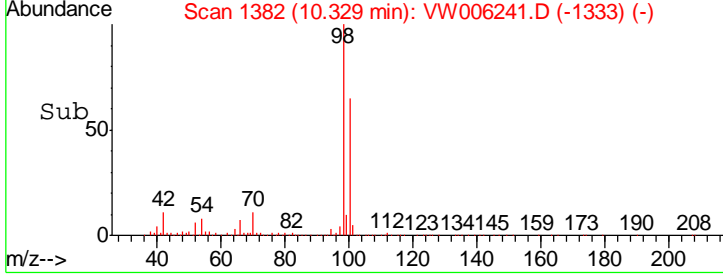
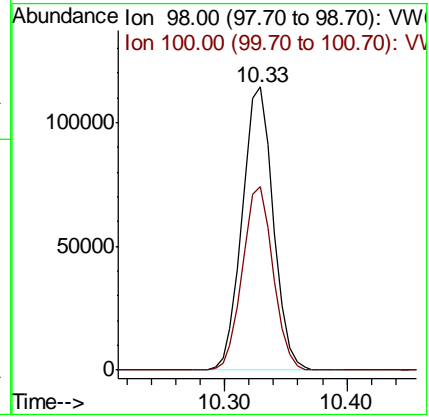
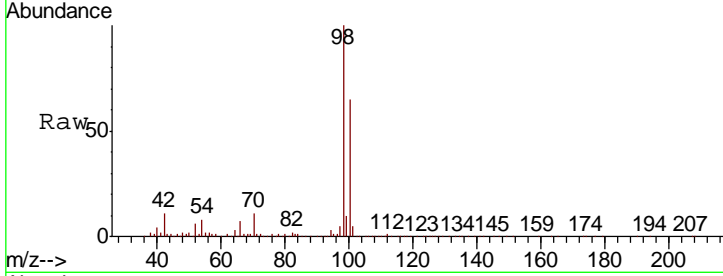




#50
 Toluene-d8
 Concen: 35.928 ug/l
 RT: 10.33 min Scan# 1382
 Delta R.T. -0.00 min
 Lab File: VW006241.D
 Acq: 19 Oct 2018 22:13

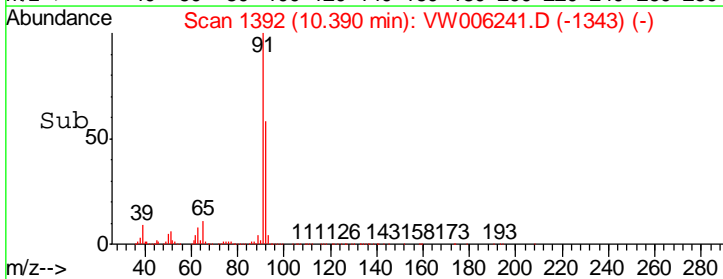
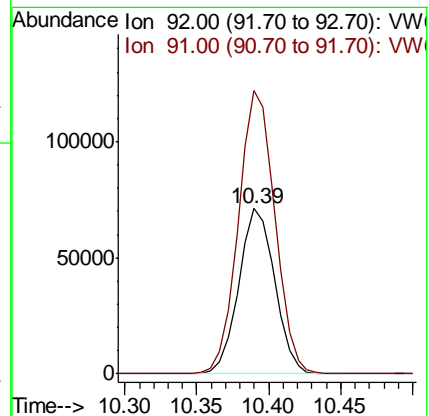
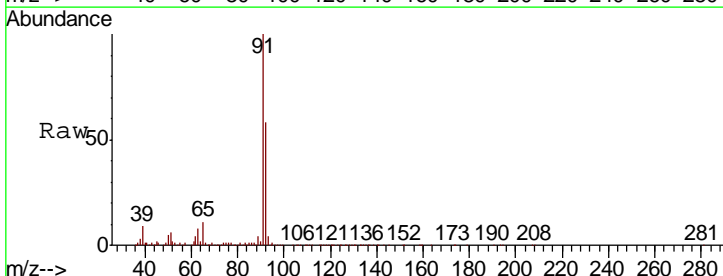
Instrument : MSVOA_W
 ClientSampled : MS-VB-25868-BOX-1RE

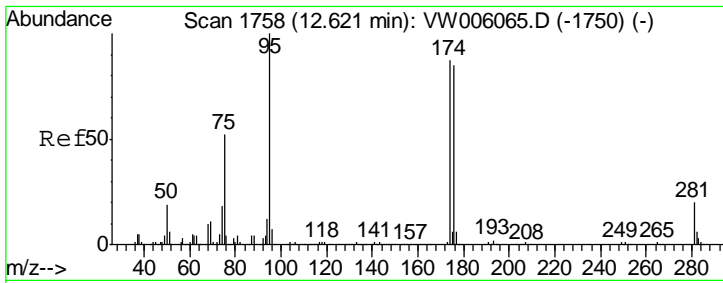
Tgt Ion	Resp	Lower	Upper
98	200312		
100	64.2	51.6	77.4



#52
 Toluene
 Concen: 29.402 ug/l
 RT: 10.39 min Scan# 1392
 Delta R.T. -0.00 min
 Lab File: VW006241.D
 Acq: 19 Oct 2018 22:13

Tgt Ion	Resp	Lower	Upper
92	123605		
91	172.9	140.0	210.0

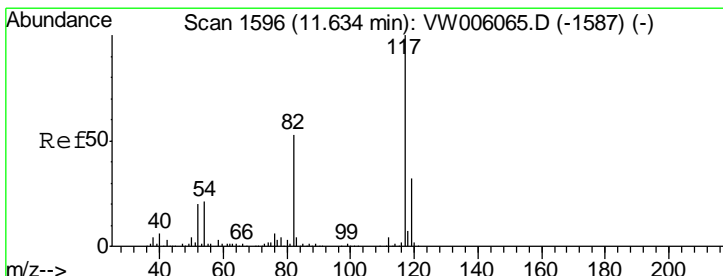
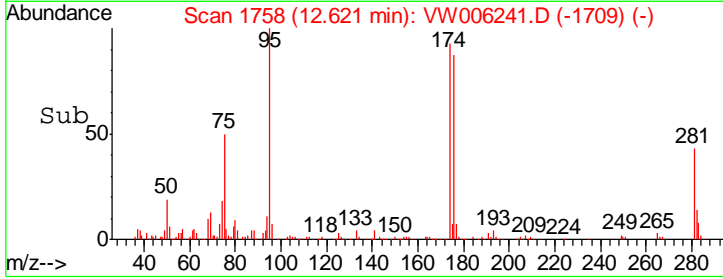
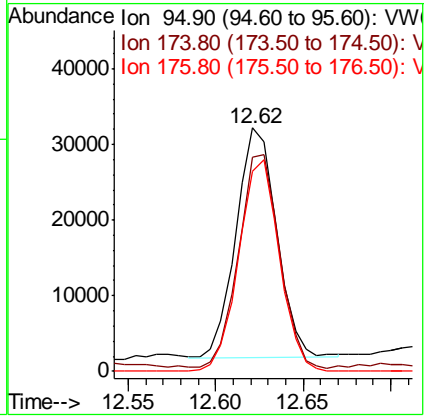
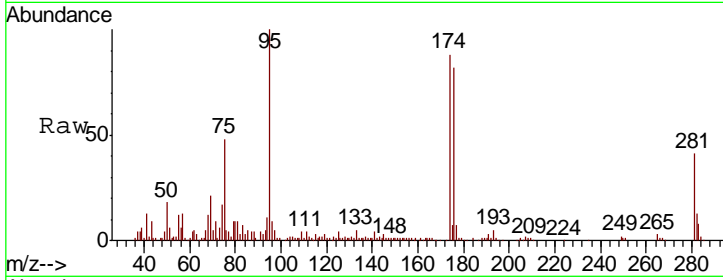




#62
 4-Bromofluorobenzene
 Concen: 23.604 ug/l
 RT: 12.62 min Scan# 1758
 Delta R.T. -0.00 min
 Lab File: VW006241.D
 Acq: 19 Oct 2018 22:13

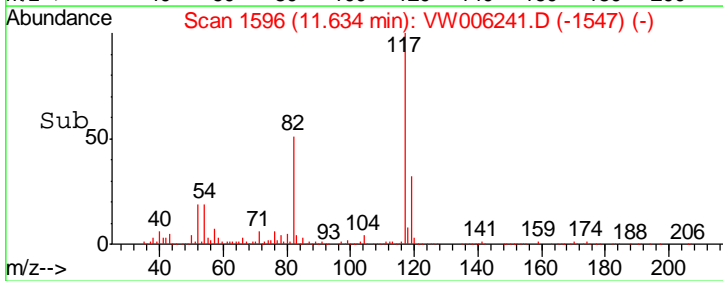
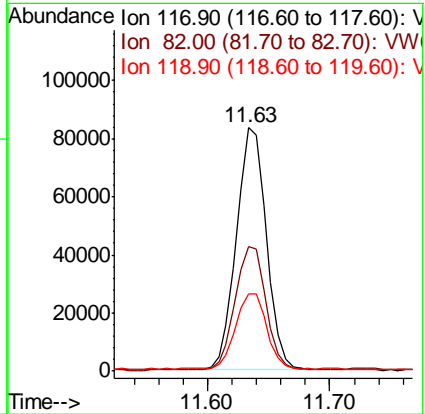
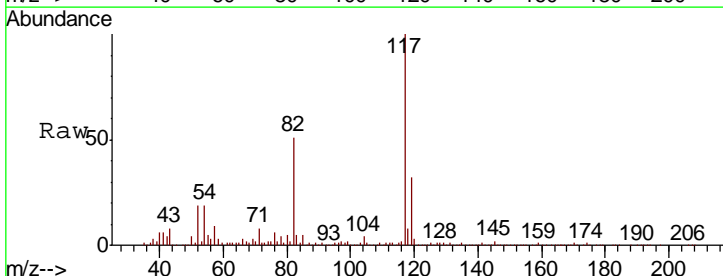
Instrument : MSVOA_W
 ClientSampled : MS-VB-25868-BOX-1RE

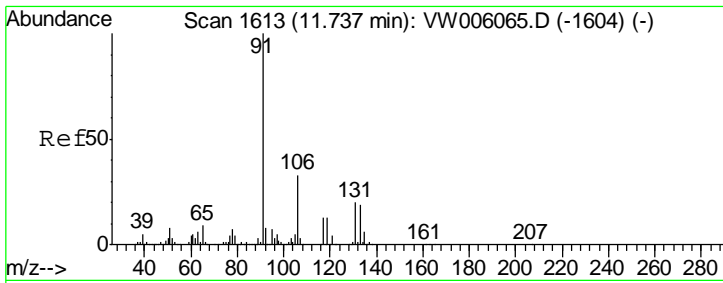
Tgt Ion	Resp	Lower	Upper
95	49428		
174	93.2	0.0	186.0
176	91.5	0.0	181.6



#63
 Chlorobenzene-d5
 Concen: 50.000 ug/l
 RT: 11.63 min Scan# 1596
 Delta R.T. -0.00 min
 Lab File: VW006241.D
 Acq: 19 Oct 2018 22:13

Tgt Ion	Resp	Lower	Upper
117	141854		
82	50.9	42.1	63.1
119	31.1	25.8	38.6

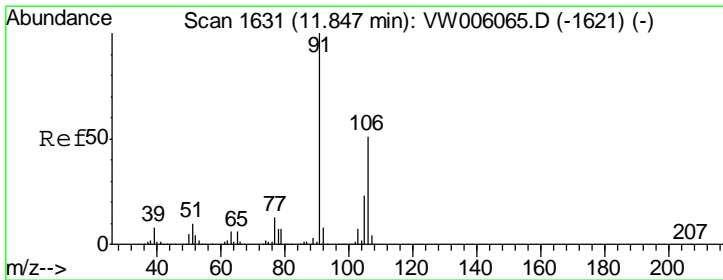
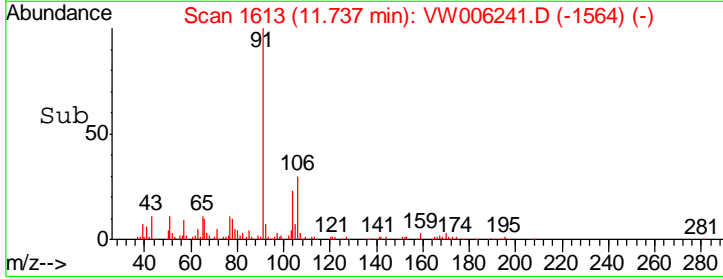
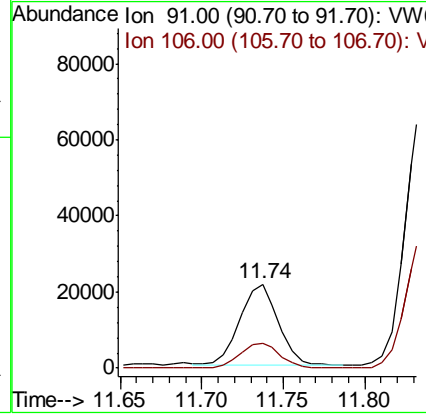
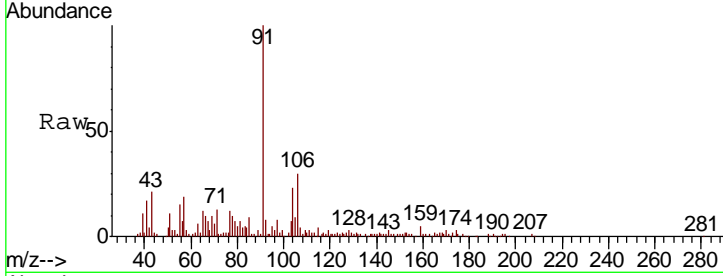




#67
 Ethyl Benzene
 Concen: 6.725 ug/l
 RT: 11.74 min Scan# 1613
 Delta R.T. -0.00 min
 Lab File: VW006241.D
 Acq: 19 Oct 2018 22:13

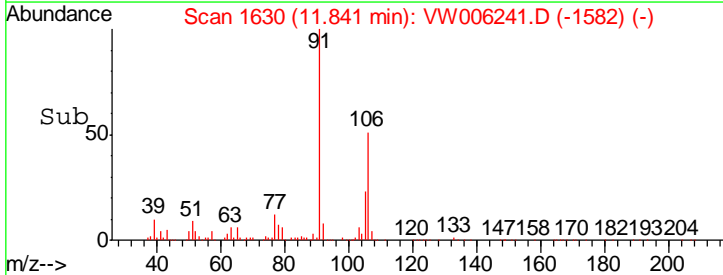
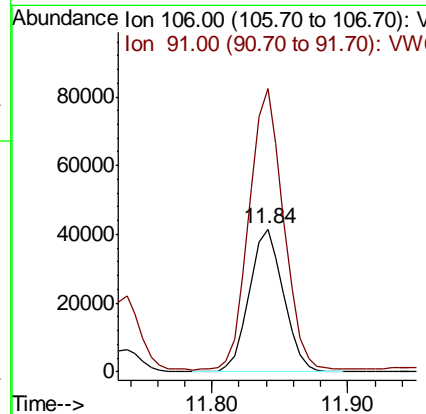
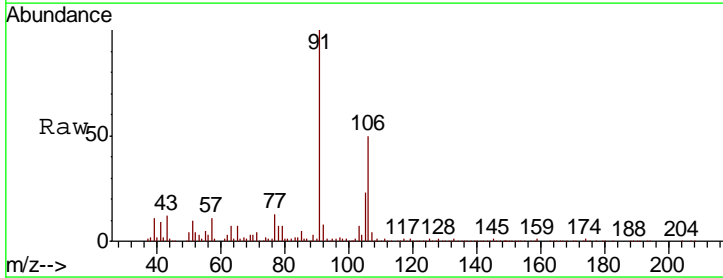
Instrument : MSVOA_W
 ClientSampled : MS-VB-25868-BOX-1RE

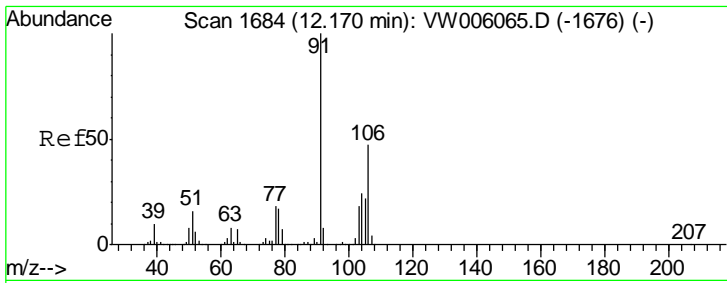
Tgt Ion: 91 Resp: 35391
 Ion Ratio Lower Upper
 91 100
 106 30.1 26.1 39.1



#68
 m/p-Xylenes
 Concen: 35.015 ug/l
 RT: 11.84 min Scan# 1630
 Delta R.T. -0.01 min
 Lab File: VW006241.D
 Acq: 19 Oct 2018 22:13

Tgt Ion: 106 Resp: 72834
 Ion Ratio Lower Upper
 106 100
 91 198.4 159.1 238.7

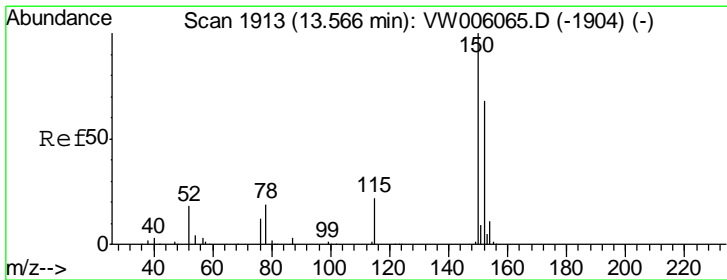
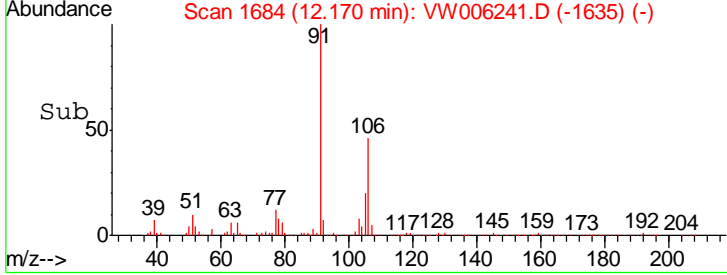
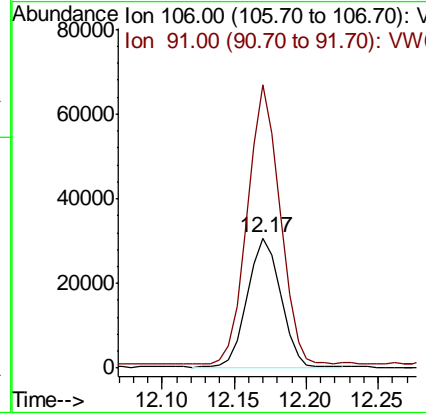
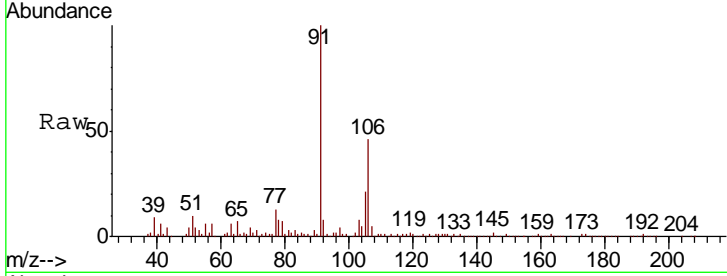




#69
 o-Xylene
 Concen: 24.681 ug/l
 RT: 12.17 min Scan# 1684
 Delta R.T. -0.00 min
 Lab File: VW006241.D
 Acq: 19 Oct 2018 22:13

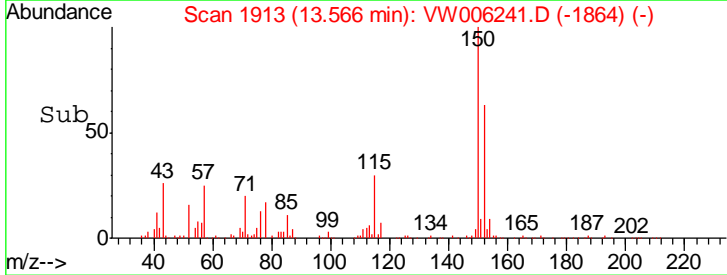
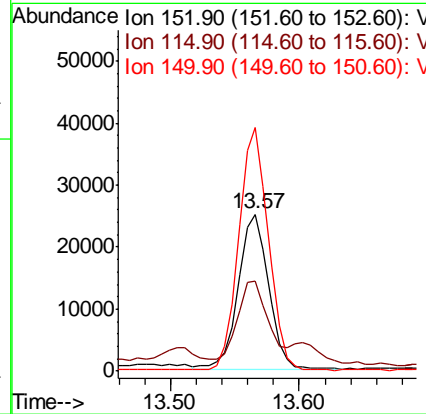
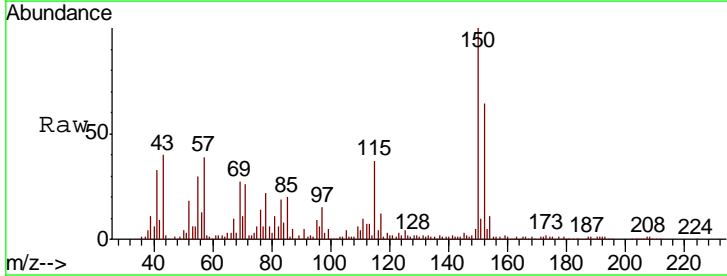
Instrument : MSVOA_W
 ClientSampled : MS-VB-25868-BOX-1RE

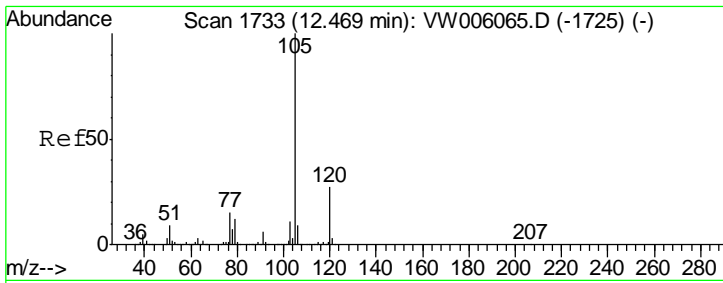
Tgt Ion	Resp	Lower	Upper
106	48927		
106	100		
91	209.2	105.4	316.1



#72
 1,4-Dichlorobenzene-d4
 Concen: 50.000 ug/l
 RT: 13.57 min Scan# 1913
 Delta R.T. -0.00 min
 Lab File: VW006241.D
 Acq: 19 Oct 2018 22:13

Tgt Ion	Resp	Lower	Upper
152	40767		
152	100		
115	48.9	27.8	83.3
150	152.1	0.0	349.2

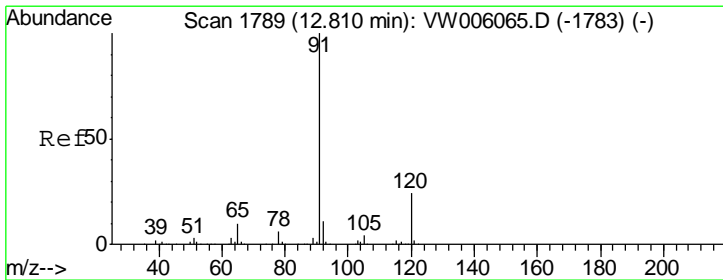
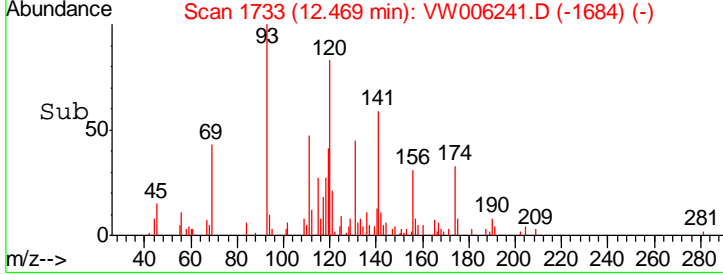
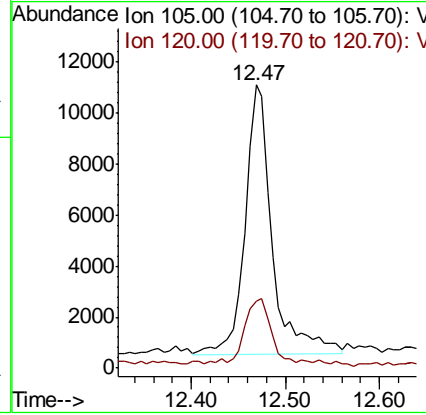
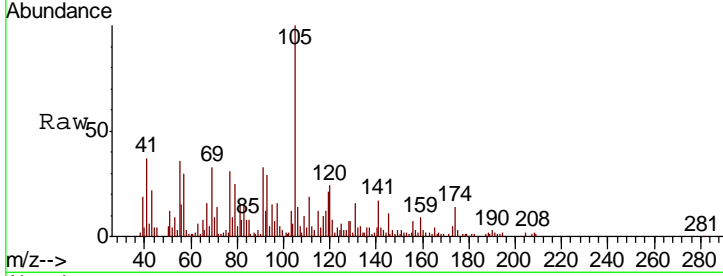




#73
 Isopropylbenzene
 Concen: 7.373 ug/l
 RT: 12.47 min Scan# 1733
 Delta R.T. -0.00 min
 Lab File: VW006241.D
 Acq: 19 Oct 2018 22:13

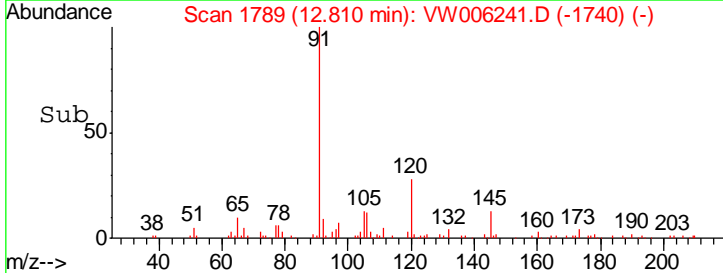
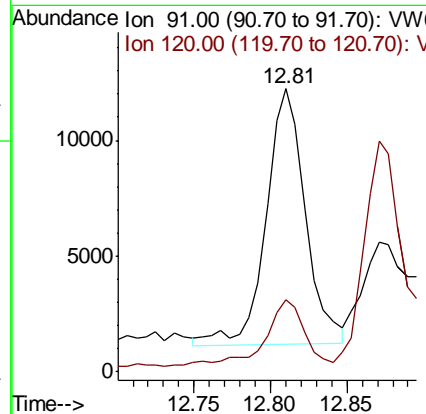
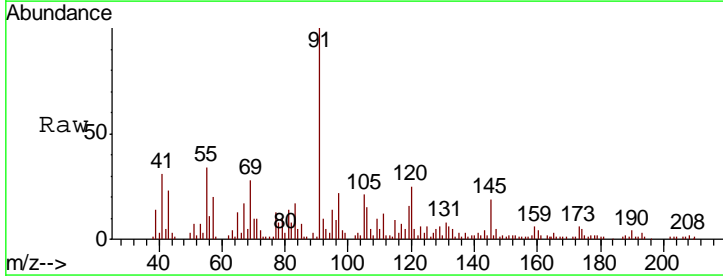
Instrument : MSVOA_W
 ClientSampled : MS-VB-25868-BOX-1RE

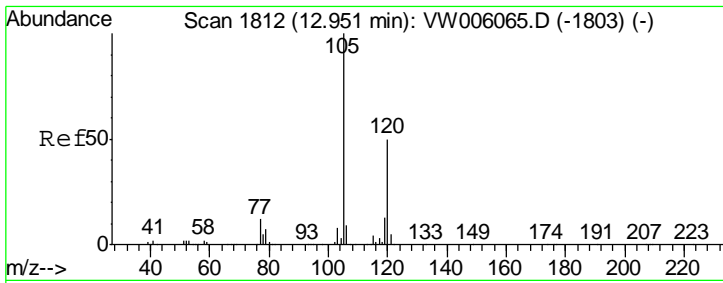
Tgt Ion	Resp	Lower	Upper
105	100		
120	23.5	13.6	40.7



#78
 n-propylbenzene
 Concen: 5.849 ug/l
 RT: 12.81 min Scan# 1789
 Delta R.T. -0.00 min
 Lab File: VW006241.D
 Acq: 19 Oct 2018 22:13

Tgt Ion	Resp	Lower	Upper
91	100		
120	26.0	12.2	36.6

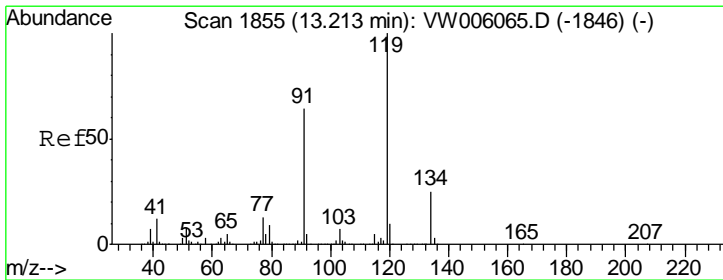
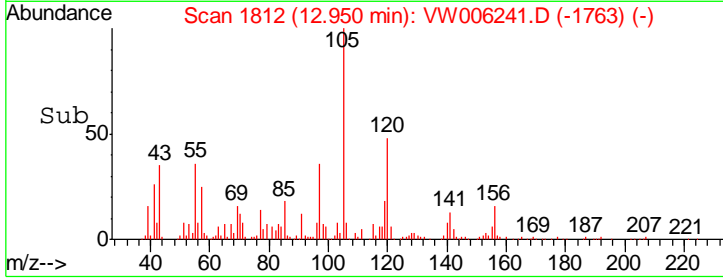
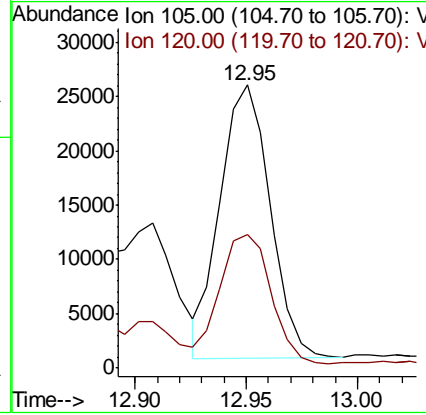
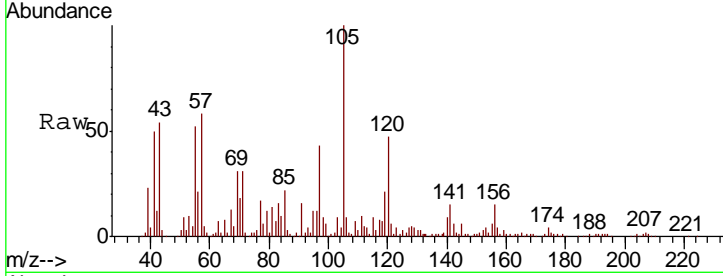




#80
 1,3,5-Trimethylbenzene
 Concen: 16.112 ug/l
 RT: 12.95 min Scan# 1812
 Delta R.T. -0.00 min
 Lab File: VW006241.D
 Acq: 19 Oct 2018 22:13

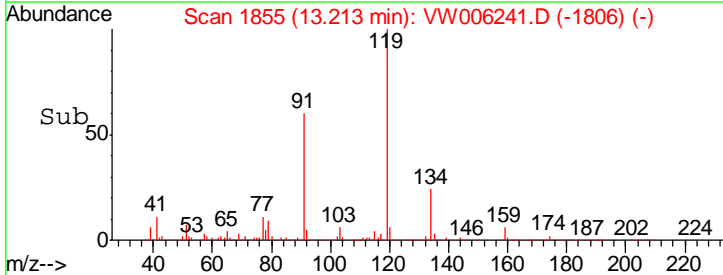
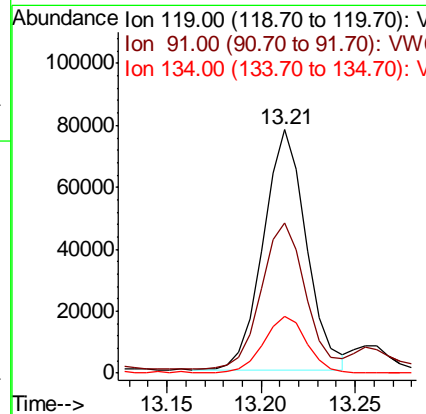
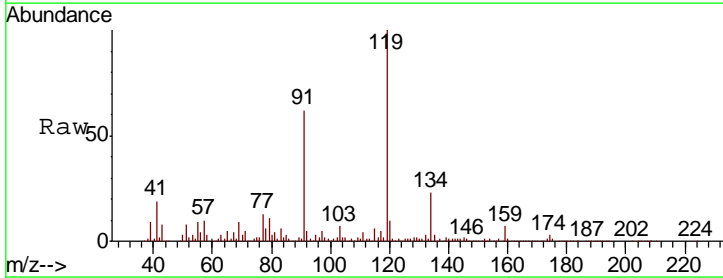
Instrument : MSVOA_W
 ClientSampleId : MS-VB-25868-BOX-1RE

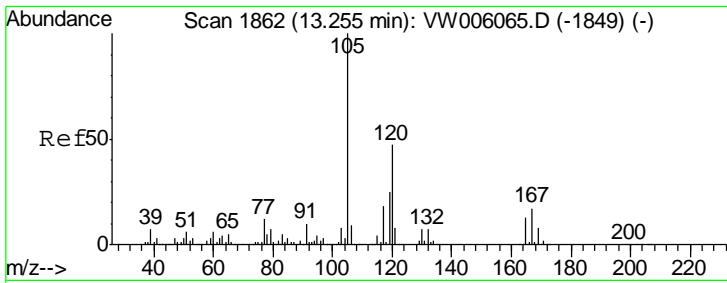
Tgt Ion	Resp	Lower	Upper
105	39119		
120	48.3	24.9	74.6



#83
 tert-Butylbenzene
 Concen: 56.755 ug/l
 RT: 13.21 min Scan# 1855
 Delta R.T. -0.00 min
 Lab File: VW006241.D
 Acq: 19 Oct 2018 22:13

Tgt Ion	Resp	Lower	Upper
119	123288		
91	61.5	32.3	96.9
134	23.1	13.6	40.8

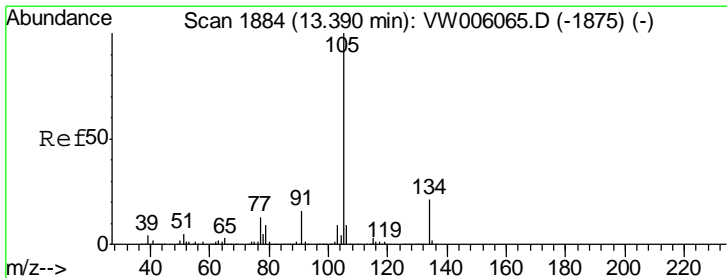
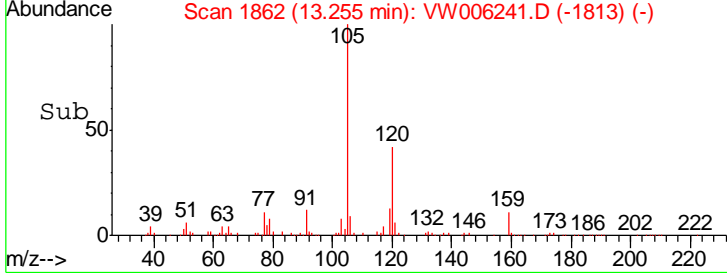
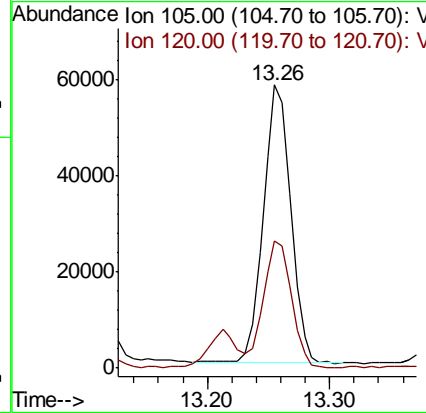
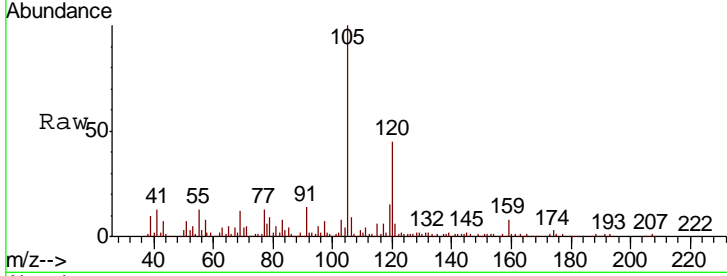




#84
 1,2,4-Trimethylbenzene
 Concen: 36.986 ug/l
 RT: 13.26 min Scan# 1862
 Delta R.T. -0.00 min
 Lab File: VW006241.D
 Acq: 19 Oct 2018 22:13

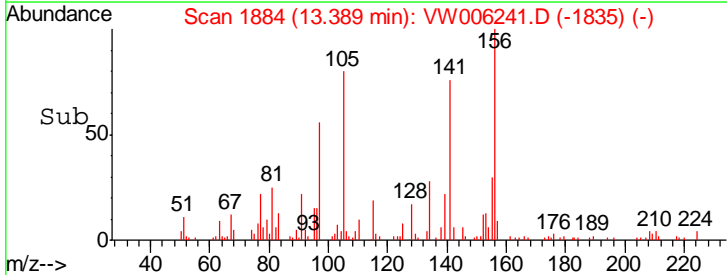
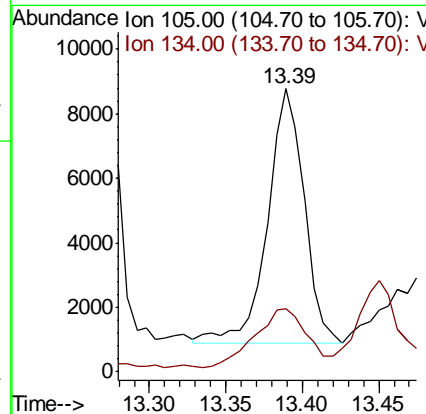
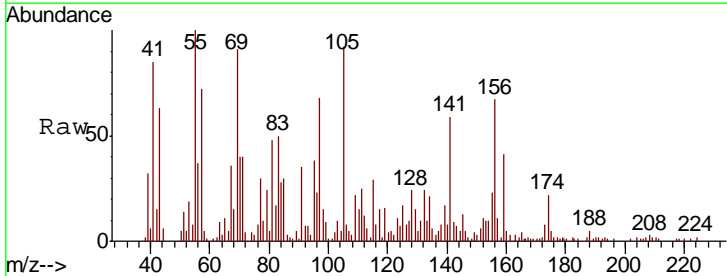
Instrument : MSVOA_W
 ClientSampled : MS-VB-25868-BOX-1RE

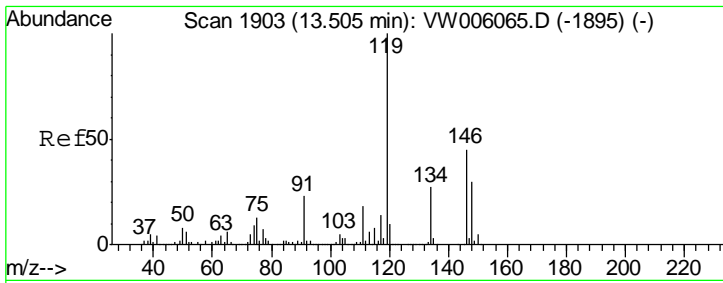
Tgt Ion	Resp	Lower	Upper
105	100		
120	46.0	23.1	69.3



#85
 sec-Butylbenzene
 Concen: 4.277 ug/l
 RT: 13.39 min Scan# 1884
 Delta R.T. -0.00 min
 Lab File: VW006241.D
 Acq: 19 Oct 2018 22:13

Tgt Ion	Resp	Lower	Upper
105	100		
134	31.9	10.5	31.6#

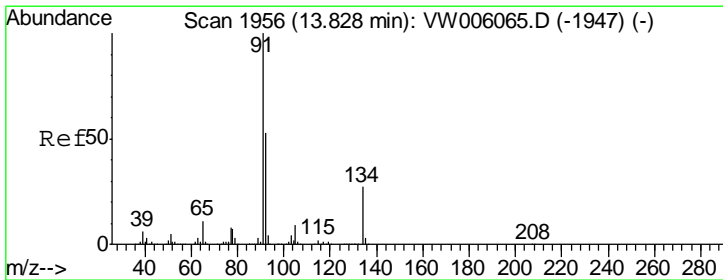
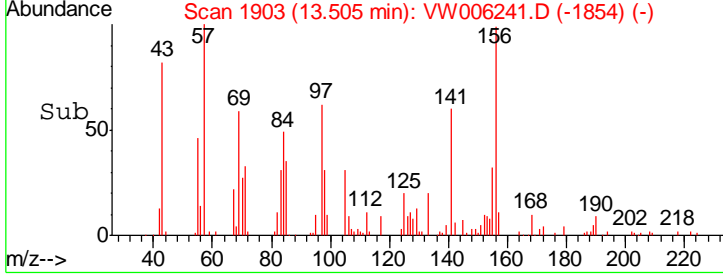
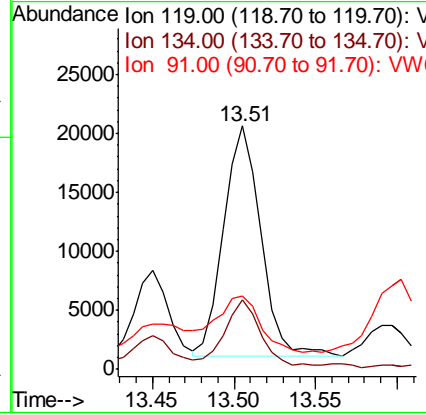
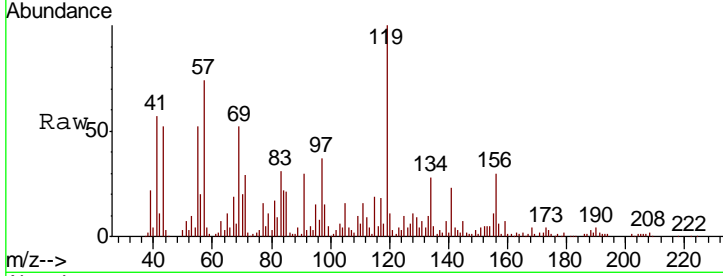




#86
 p-Isopropyltoluene
 Concen: 11.130 ug/l
 RT: 13.51 min Scan# 1903
 Delta R.T. -0.00 min
 Lab File: VW006241.D
 Acq: 19 Oct 2018 22:13

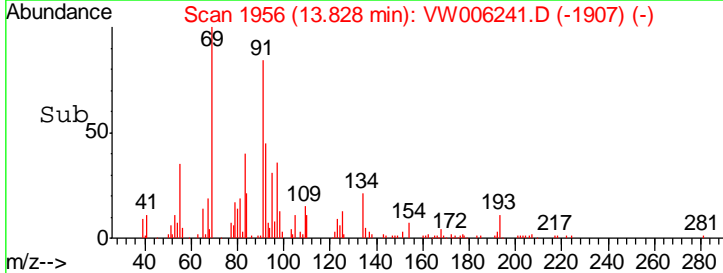
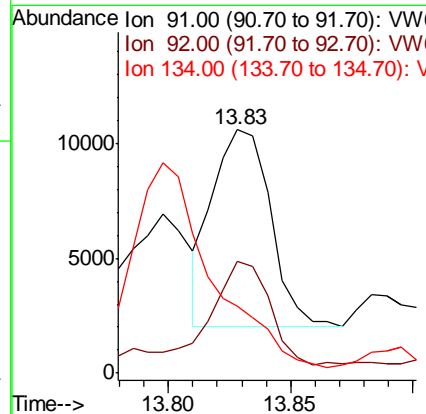
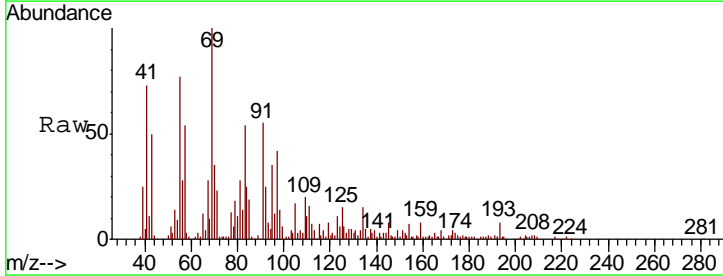
Instrument : MSVOA_W
 ClientSampled : MS-VB-25868-BOX-1RE

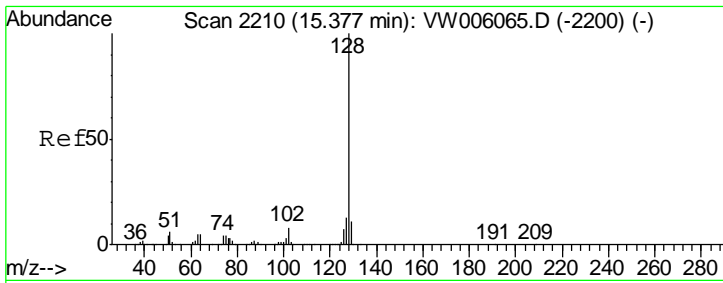
Tgt Ion	Resp	Lower	Upper
119	30894		
134	26.5	13.4	40.2
91	30.3	11.4	34.1



#89
 n-Butylbenzene
 Concen: 5.552 ug/l
 RT: 13.83 min Scan# 1956
 Delta R.T. -0.00 min
 Lab File: VW006241.D
 Acq: 19 Oct 2018 22:13

Tgt Ion	Resp	Lower	Upper
91	14094		
92	56.4	26.6	79.7
134	0.0	14.0	41.9#

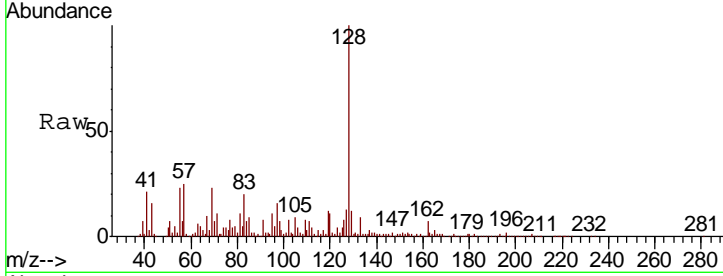




#95
 Naphthalene
 Concen: 105.173 ug/l
 RT: 15.38 min Scan# 2210
 Delta R.T. -0.00 min
 Lab File: VW006241.D
 Acq: 19 Oct 2018 22:13

Instrument :
 MSVOA_W
ClientSampled :
 MS-VB-25868-BOX-1RE

Tot Ion	Ratio	Lower	Upper
128	100		
127	16.8	10.3	15.5#
129	13.4	8.7	13.1#



Abundance Ion 128.00 (127.70 to 128.70): V
 Ion 127.00 (126.70 to 127.70): V
 Ion 129.00 (128.70 to 129.70): V

