

Data Path : Z:\VOASRV\HPCHEM1\MSVOA W\DATA\VW102218\
 Data File : VW006289.D
 Acq On : 23 Oct 2018 09:39
 Operator : VA/AP
 Sample : J5624-05
 Misc : 4.39G/5ML/MSVOA W/SOIL
 ALS Vial : 52 Sample Multiplier: 1

Instrument :
 MSVOA_W
 ClientSampleId :
 PA-SB-03A

Integration Parameters: RTEINT.P
 Integrator: RTE
 Smoothing : ON
 Sampling : 1
 Start Thrs: 0.2
 Stop Thrs : 0

Filtering: 5
 Min Area: 3 % of largest Peak
 Max Peaks: 100
 Peak Location: TOP

If leading or trailing edge < 100 prefer < Baseline drop else tangent >
 Peak separation: 5

Method : Z:\VOASRV\HPCHEM1\MSVOA_W\METHOD\82W101518S.M
 Title : SW846 8260

Signal : TIC

peak #	R.T. min	first scan	max scan	last scan	PK TY	peak height	corr. area	corr. % max.	% of total
1	1.959	7	9	14	rVB4	861	1146	1.10%	0.202%
2	2.166	38	43	45	rBV3	1114	2043	1.96%	0.361%
3	2.623	116	118	122	rBV4	928	1087	1.04%	0.192%
4	2.940	168	170	174	rVB4	962	1060	1.02%	0.187%
5	3.526	265	266	270	rBV4	913	1243	1.19%	0.220%
6	4.129	359	365	371	rBV4	668	1771	1.70%	0.313%
7	4.909	485	493	503	rVB4	3797	11957	11.47%	2.112%
8	7.153	852	861	871	rBV	9317	26424	25.35%	4.667%
9	7.885	973	981	985	rBV4	1860	4040	3.88%	0.714%
10	7.952	985	992	1003	rVB2	27081	61562	59.06%	10.874%
11	8.311	1033	1051	1060	rBV2	16725	40959	39.29%	7.235%
12	8.848	1130	1139	1149	rVB2	46131	91920	88.18%	16.236%
13	9.043	1165	1171	1177	rVB4	833	1462	1.40%	0.258%
14	9.890	1304	1310	1316	rBV5	1252	2403	2.31%	0.424%
15	10.329	1375	1382	1389	rVV	36764	65063	62.42%	11.492%
16	10.707	1439	1444	1452	rVB2	3533	6035	5.79%	1.066%
17	11.445	1561	1565	1573	rVB3	1918	3528	3.38%	0.623%
18	11.634	1589	1596	1604	rBV	62254	104239	100.00%	18.412%
19	11.933	1633	1645	1646	rBV6	765	2028	1.95%	0.358%
20	12.621	1751	1758	1765	rVB2	33957	56671	54.37%	10.010%
21	13.560	1906	1912	1919	rVV2	43194	72291	69.35%	12.769%
22	14.079	1992	1997	2002	rBV3	1429	2600	2.49%	0.459%
23	15.371	2205	2209	2216	rBV6	543	1440	1.38%	0.254%
24	15.450	2219	2222	2227	rVB3	1964	3184	3.05%	0.562%

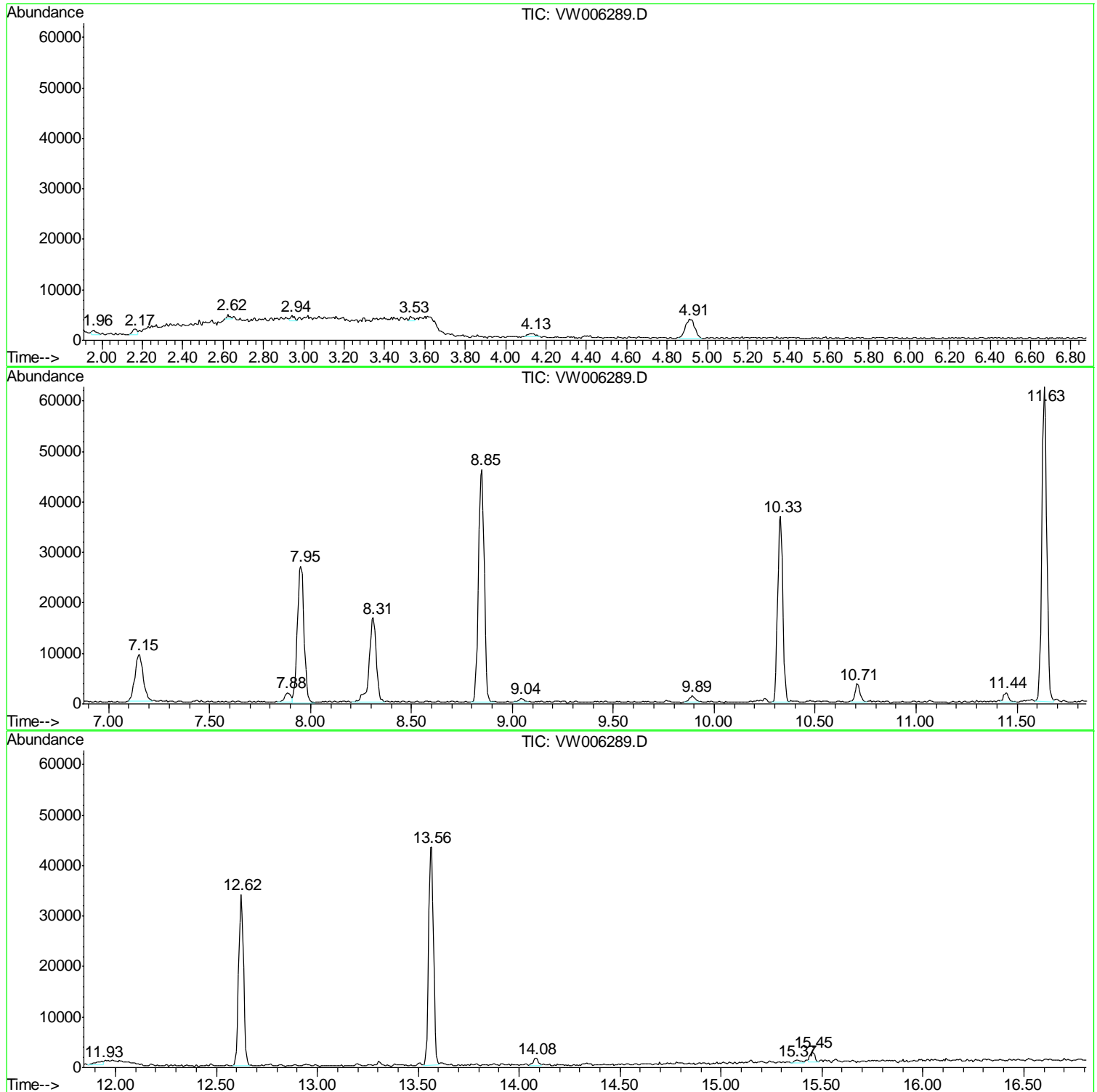
Sum of corrected areas: 566156

Data Path : Z:\VOASRV\HPCHEM1\MSVOA W\DATA\VW102218\
Data File : VW006289.D
Acq On : 23 Oct 2018 09:39
Operator : VA/AP
Sample : J5624-05
Misc : 4.39G/5ML/MSVOA W/SOIL
ALS Vial : 52 Sample Multiplier: 1

Instrument :
MSVOA_W
ClientSampleId :
PA-SB-03A

Quant Method : Z:\VOASRV\HPCHEM1\MSVOA_W\METHOD\82W101518S.M
Quant Title : SW846 8260

TIC Library : C:\DATABASE\NIST11.L
TIC Integration Parameters: LSCINT.P



Data Path : Z:\VOASRV\HPCHEM1\MSVOA_W\DATA\VW102218\
Data File : VW006289.D
Acq On : 23 Oct 2018 09:39
Operator : VA/AP
Sample : J5624-05
Misc : 4.39G/5ML/MSVOA_W/SOIL
ALS Vial : 52 Sample Multiplier: 1

Instrument :
MSVOA_W
ClientSampleId :
PA-SB-03A

Quant Method : Z:\VOASRV\HPCHEM1\MSVOA_W\METHOD\82W101518S.M
Quant Title : SW846 8260

TIC Library : C:\DATABASE\NIST11.L
TIC Integration Parameters: LSCINT.P

No Library Search Compounds Detected

Data Path : Z:\VOASRV\HPCHEM1\MSVOA_W\DATA\VW102218\
Data File : VW006289.D
Acq On : 23 Oct 2018 09:39
Operator : VA/AP
Sample : J5624-05
Misc : 4.39G/5ML/MSVOA_W/SOIL
ALS Vial : 52 Sample Multiplier: 1

Instrument :
MSVOA_W
ClientSampleId :
PA-SB-03A

Quant Method : Z:\VOASRV\HPCHEM1\MSVOA_W\METHOD\82W101518S.M
Quant Title : SW846 8260

TIC Library : C:\DATABASE\NIST11.L
TIC Integration Parameters: LSCINT.P

TIC Top Hit name	RT	EstConc	Units	Response	--Internal Standard--			
					#	RT	Resp	Conc
