

Data Path : Z:\VOASRV\HPCHEM1\MSVOA W\DATA\VW102419\
 Data File : VW013726.D
 Acq On : 24 Oct 2019 21:56
 Operator : SY/VA
 Sample : K5499-04RE
 Misc : 6.96G/5ML/MSVOA W/SOIL
 ALS Vial : 18 Sample Multiplier: 1

Instrument :
 MSVOA_W
 ClientSampleId :
 194-84-(1)RE

Quant Time: Oct 25 08:34:59 2019
 Quant Method : Z:\VOASRV\HPCHEM1\MSVOA_W\METHOD\82W102319S.M
 Quant Title : SW846 8260
 QLast Update : Wed Oct 23 14:11:46 2019
 Response via : Initial Calibration

| Internal Standards | R.T. | QIon | Response | Conc | Units | Dev(Min) |
|----------------------------|-------|------|----------|-------|-------|----------|
| 1) Pentafluorobenzene | 7.95 | 168 | 262606 | 50.00 | ug/l | 0.00 |
| 34) 1,4-Difluorobenzene | 8.84 | 114 | 393387 | 50.00 | ug/l | 0.00 |
| 63) Chlorobenzene-d5 | 11.63 | 117 | 310192 | 50.00 | ug/l | 0.00 |
| 72) 1,4-Dichlorobenzene-d4 | 13.56 | 152 | 112639 | 50.00 | ug/l | 0.00 |

System Monitoring Compounds

| | | | | | | |
|---------------------------|-------|-----|----------|--------|---------|------|
| 33) 1,2-Dichloroethane-d4 | 8.31 | 65 | 106984 | 54.31 | ug/l | 0.00 |
| Spiked Amount | | | | 50.000 | | |
| | | | Recovery | = | 108.62% | |
| 35) Dibromofluoromethane | 7.88 | 113 | 114371 | 52.32 | ug/l | 0.00 |
| Spiked Amount | | | | 50.000 | | |
| | | | Recovery | = | 104.64% | |
| 50) Toluene-d8 | 10.32 | 98 | 447151 | 50.20 | ug/l | 0.00 |
| Spiked Amount | | | | 50.000 | | |
| | | | Recovery | = | 100.40% | |
| 62) 4-Bromofluorobenzene | 12.62 | 95 | 120940 | 40.10 | ug/l | 0.00 |
| Spiked Amount | | | | 50.000 | | |
| | | | Recovery | = | 80.20% | |

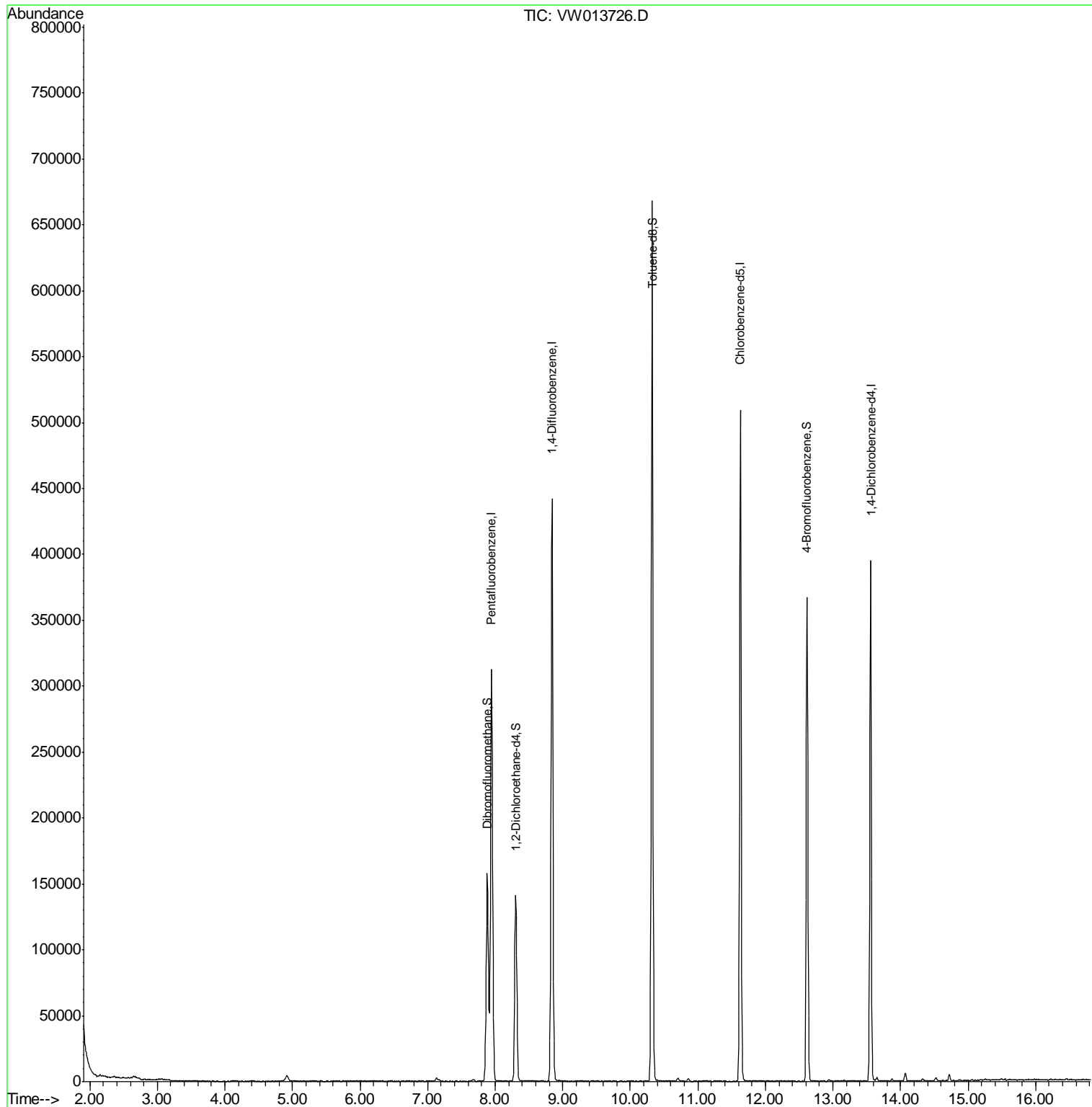
Target Compounds Qvalue

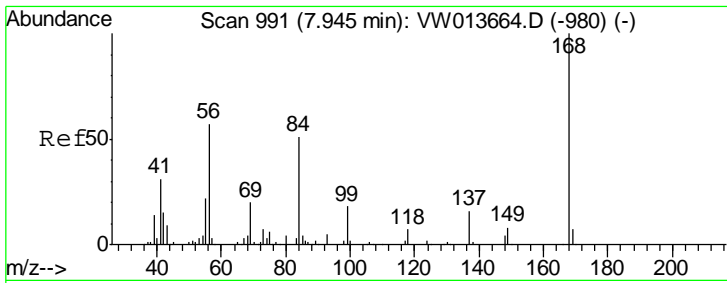
(#) = qualifier out of range (m) = manual integration (+) = signals summed

Data Path : Z:\VOASRV\HPCHEM1\MSVOA W\DATA\VW102419\
 Data File : VW013726.D
 Acq On : 24 Oct 2019 21:56
 Operator : SY/VA
 Sample : K5499-04RE
 Misc : 6.96G/5ML/MSVOA W/SOIL
 ALS Vial : 18 Sample Multiplier: 1

Instrument :
 MSVOA_W
 ClientSampleId :
 194-84-(1)RE

Quant Time: Oct 25 08:34:59 2019
 Quant Method : Z:\VOASRV\HPCHEM1\MSVOA_W\METHOD\82W102319S.M
 Quant Title : SW846 8260
 QLast Update : Wed Oct 23 14:11:46 2019
 Response via : Initial Calibration

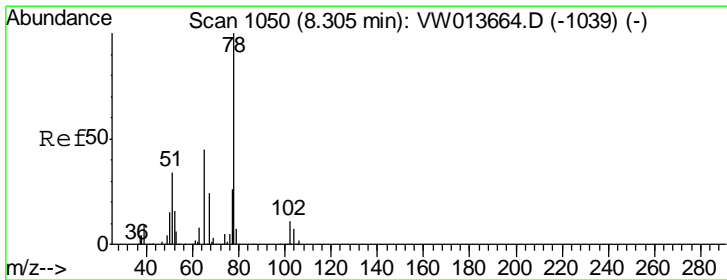
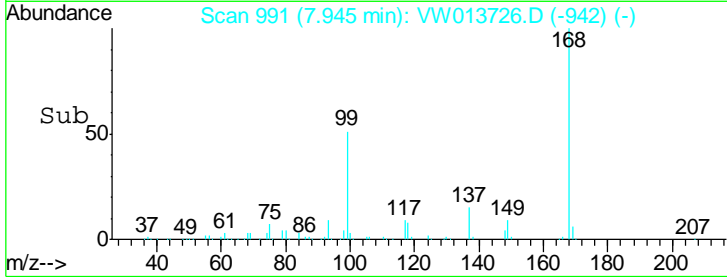
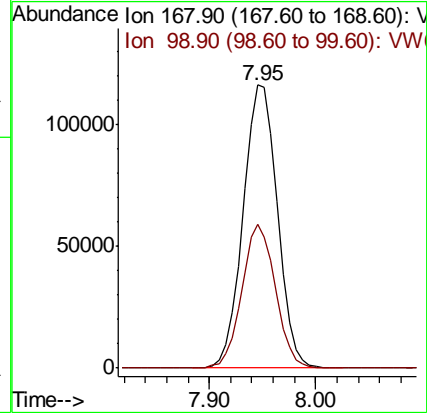
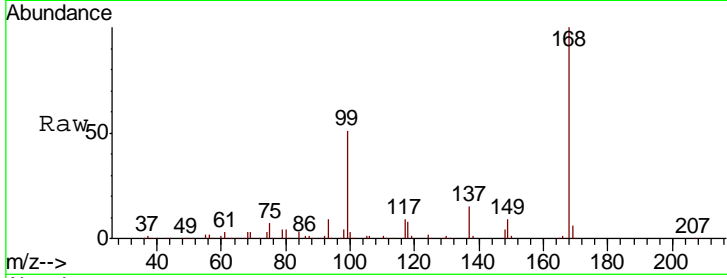




#1
 Pentafluorobenzene
 Concen: 50.000 ug/l
 RT: 7.95 min Scan# 991
 Delta R.T. -0.00 min
 Lab File: VW013726.D
 Acq: 24 Oct 2019 21:56

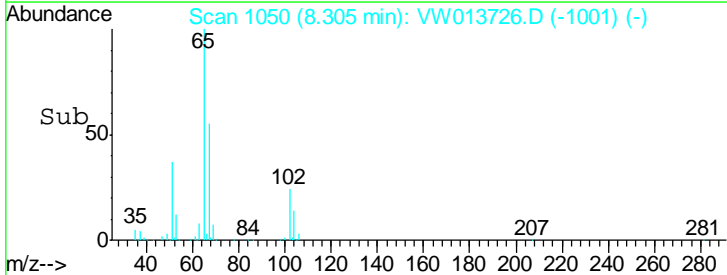
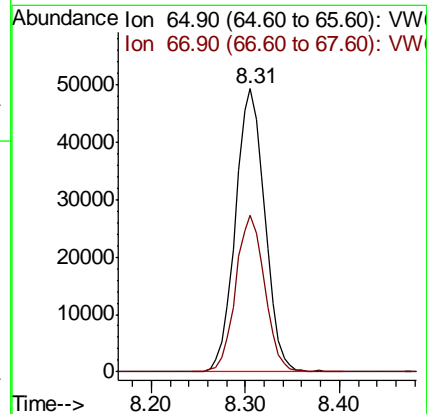
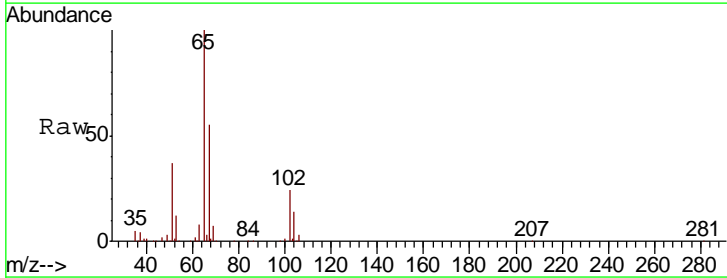
Instrument :
 MSVOA_W
 ClientSampled :
 194-84-(1)RE

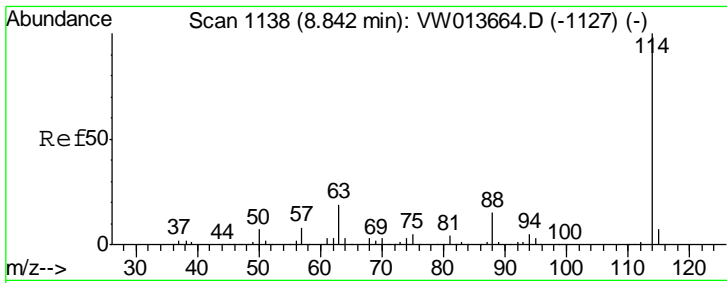
| Tgt Ion | Resp | Lower | Upper |
|---------|------|-------|-------|
| 168 | 100 | | |
| 99 | 50.7 | 39.0 | 58.6 |



#33
 1,2-Dichloroethane-d4
 Concen: 54.307 ug/l
 RT: 8.31 min Scan# 1050
 Delta R.T. -0.00 min
 Lab File: VW013726.D
 Acq: 24 Oct 2019 21:56

| Tgt Ion | Resp | Lower | Upper |
|---------|------|-------|-------|
| 65 | 100 | | |
| 67 | 54.6 | 0.0 | 109.4 |

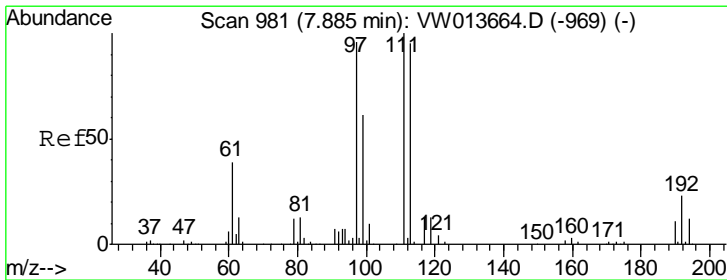
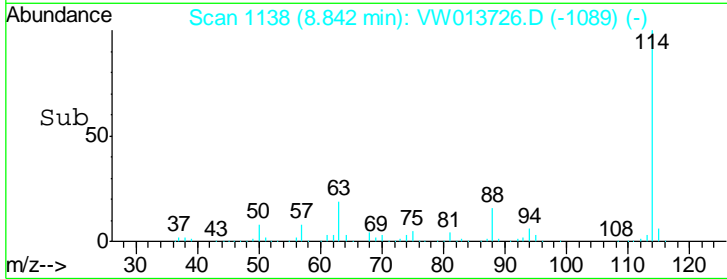
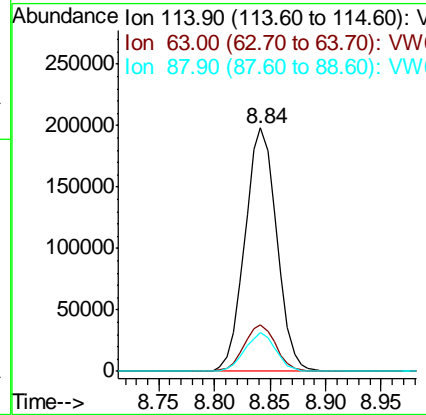
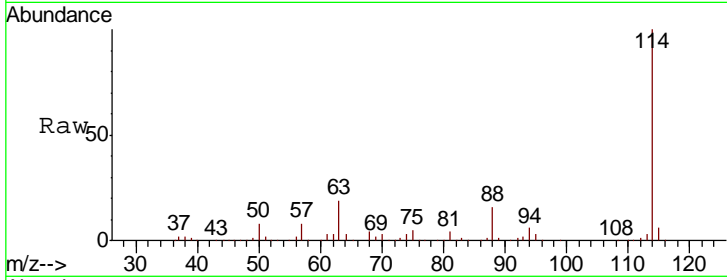




#34
 1,4-Difluorobenzene
 Concen: 50.000 ug/l
 RT: 8.84 min Scan# 1138
 Delta R.T. -0.00 min
 Lab File: VW013726.D
 Acq: 24 Oct 2019 21:56

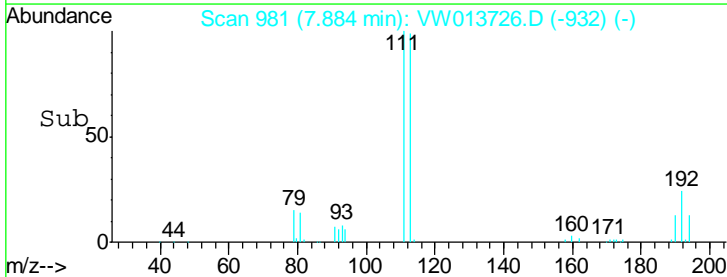
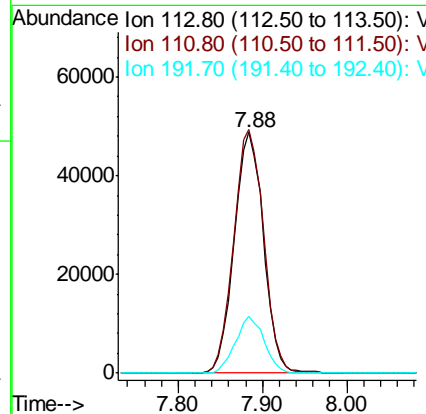
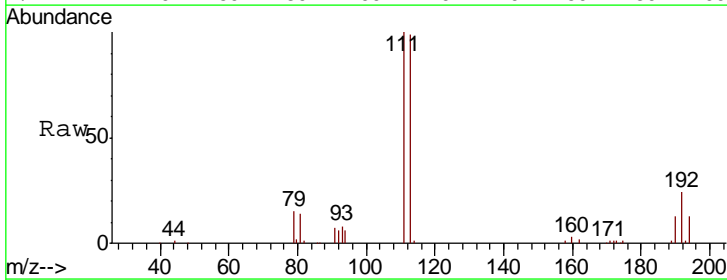
Instrument :
 MSVOA_W
ClientSampled :
 194-84-(1)RE

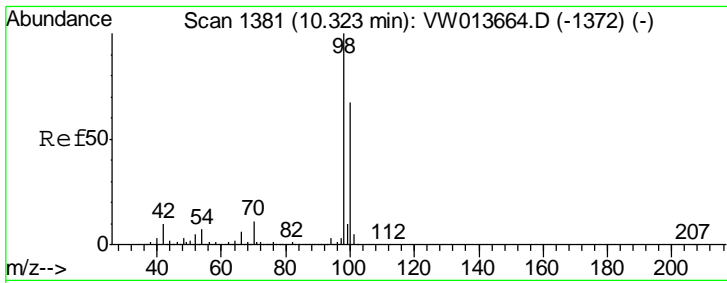
| Tgt Ion | Resp | Lower | Upper |
|---------|--------|-------|-------|
| 114 | 393387 | | |
| 63 | 19.1 | 0.0 | 37.6 |
| 88 | 15.9 | 0.0 | 30.2 |



#35
 Dibromofluoromethane
 Concen: 52.323 ug/l
 RT: 7.88 min Scan# 981
 Delta R.T. -0.00 min
 Lab File: VW013726.D
 Acq: 24 Oct 2019 21:56

| Tgt Ion | Resp | Lower | Upper |
|---------|--------|-------|-------|
| 113 | 114371 | | |
| 111 | 103.7 | 83.0 | 124.6 |
| 192 | 23.2 | 19.4 | 29.2 |

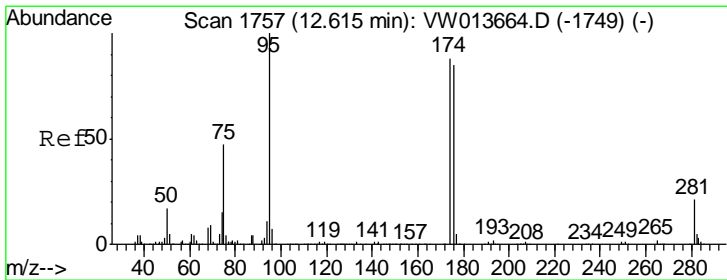
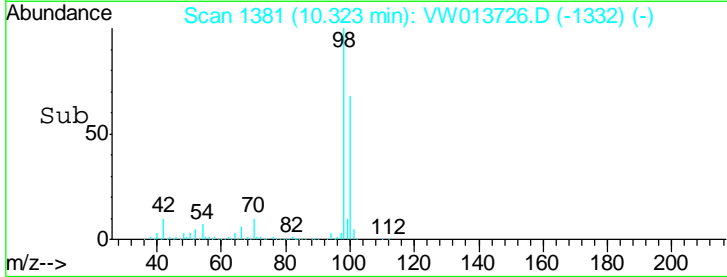
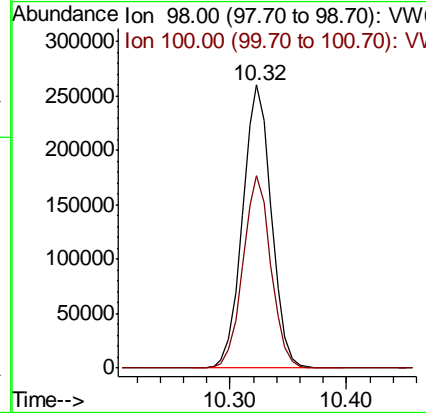
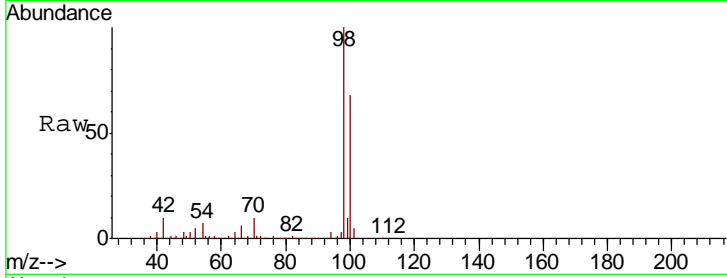




#50
 Toluene-d8
 Concen: 50.203 ug/l
 RT: 10.32 min Scan# 1381
 Delta R.T. -0.00 min
 Lab File: VW013726.D
 Acq: 24 Oct 2019 21:56

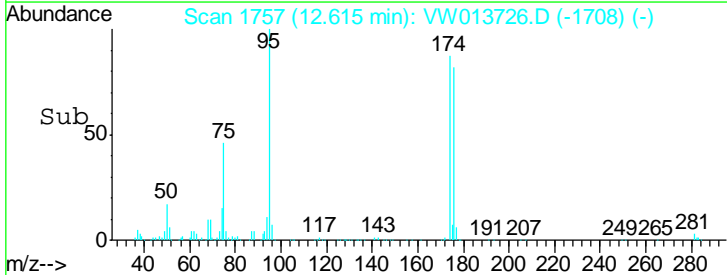
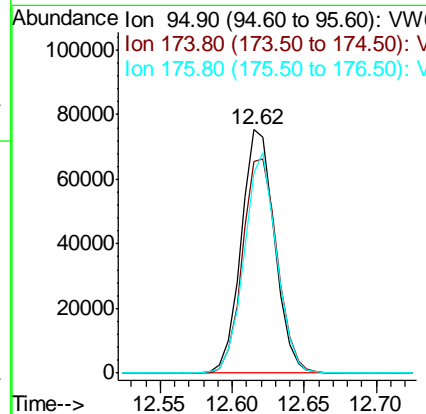
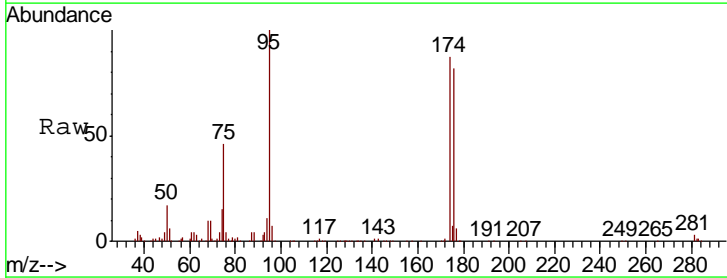
Instrument :
 MSVOA_W
 ClientSampled :
 194-84-(1)RE

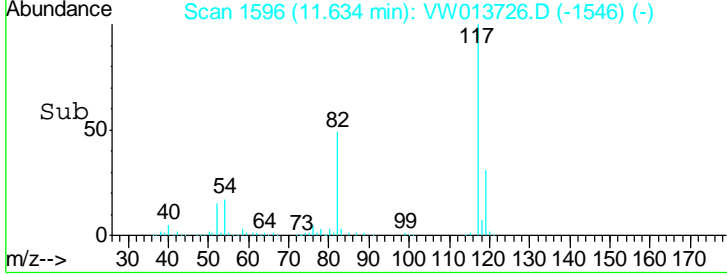
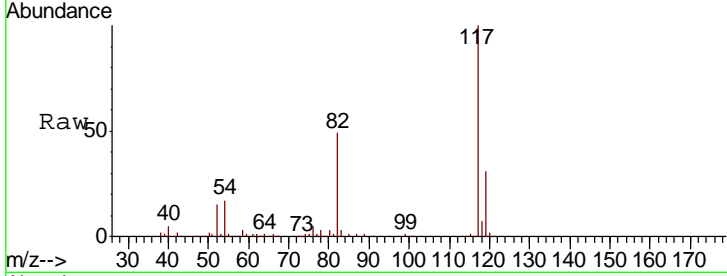
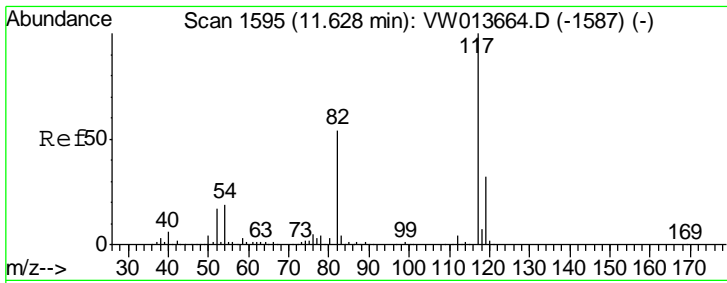
| Tgt Ion | Resp | Lower | Upper |
|---------|--------|-------|-------|
| 98 | 447151 | | |
| 100 | 100 | | |
| 100 | 66.2 | 53.4 | 80.0 |



#62
 4-Bromofluorobenzene
 Concen: 40.101 ug/l
 RT: 12.62 min Scan# 1757
 Delta R.T. -0.00 min
 Lab File: VW013726.D
 Acq: 24 Oct 2019 21:56

| Tgt Ion | Resp | Lower | Upper |
|---------|--------|-------|-------|
| 95 | 120940 | | |
| 174 | 91.2 | 0.0 | 183.6 |
| 176 | 87.6 | 0.0 | 178.0 |

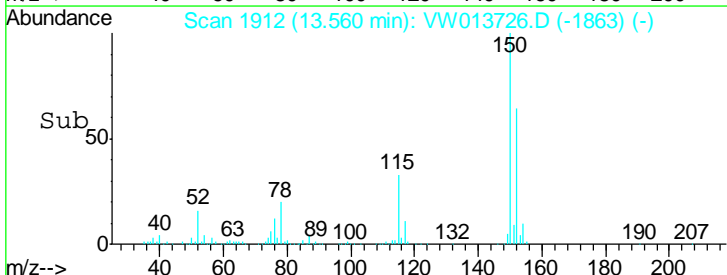
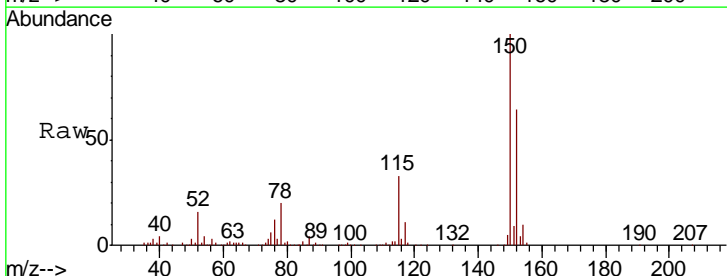
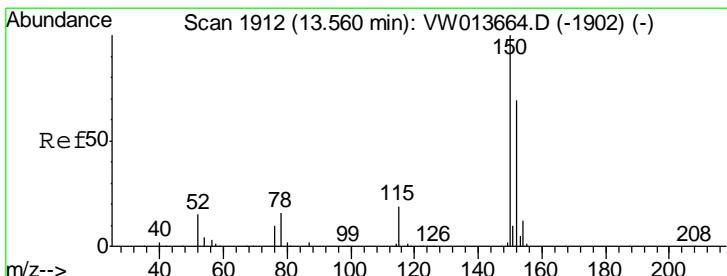
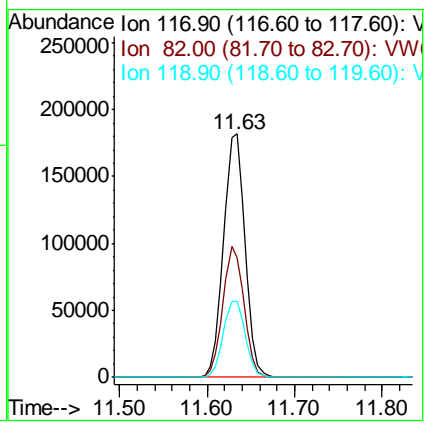




#63
 Chlorobenzene-d5
 Concen: 50.000 ug/l
 RT: 11.63 min Scan# 1596
 Delta R.T. 0.01 min
 Lab File: VW013726.D
 Acq: 24 Oct 2019 21:56

Instrument : MSVOA_W
 ClientSampled : 194-84-(1)RE

| Tgt Ion | Resp | Lower | Upper |
|---------|--------|-------|-------|
| 117 | 310192 | | |
| 82 | 49.0 | 43.6 | 65.4 |
| 119 | 31.2 | 25.4 | 38.2 |



#72
 1,4-Dichlorobenzene-d4
 Concen: 50.000 ug/l
 RT: 13.56 min Scan# 1912
 Delta R.T. -0.00 min
 Lab File: VW013726.D
 Acq: 24 Oct 2019 21:56

| Tgt Ion | Resp | Lower | Upper |
|---------|--------|-------|-------|
| 152 | 112639 | | |
| 115 | 54.5 | 27.4 | 82.2 |
| 150 | 157.3 | 0.0 | 345.4 |

