

Data Path : Z:\VOASRV\HPCHEM1\MSVOA W\DATA\VW102918\
 Data File : VW006442.D
 Acq On : 27 Oct 2018 09:35
 Operator : SY/AP
 Sample : J5624-01RE
 Misc : 5.98G/5ML/MSVOA W/SOIL
 ALS Vial : 50 Sample Multiplier: 1

Instrument :
 MSVOA_W
 ClientSampleId :
 PA-SED-01RE

Quant Time: Oct 29 04:05:44 2018
 Quant Method : Z:\VOASRV\HPCHEM1\MSVOA_W\METHOD\82W101518S.M
 Quant Title : SW846 8260
 QLast Update : Thu Oct 18 17:01:24 2018
 Response via : Initial Calibration

Internal Standards	R.T.	QIon	Response	Conc	Units	Dev(Min)
1) Pentafluorobenzene	7.95	168	210693	50.00	ug/l	0.00
34) 1,4-Difluorobenzene	8.84	114	319195	50.00	ug/l	0.00
63) Chlorobenzene-d5	11.63	117	265520	50.00	ug/l	0.00
72) 1,4-Dichlorobenzene-d4	13.57	152	123364	50.00	ug/l	0.00

System Monitoring Compounds

33) 1,2-Dichloroethane-d4	8.31	65	111426	63.79	ug/l	0.00
Spiked Amount				50.000		
			Recovery	=	127.58%	
35) Dibromofluoromethane	7.88	113	105610	55.99	ug/l	0.00
Spiked Amount				50.000		
			Recovery	=	111.98%	
50) Toluene-d8	10.33	98	333371	46.46	ug/l	0.00
Spiked Amount				50.000		
			Recovery	=	92.92%	
62) 4-Bromofluorobenzene	12.62	95	111687	41.44	ug/l	0.00
Spiked Amount				50.000		
			Recovery	=	82.88%	

Target Compounds

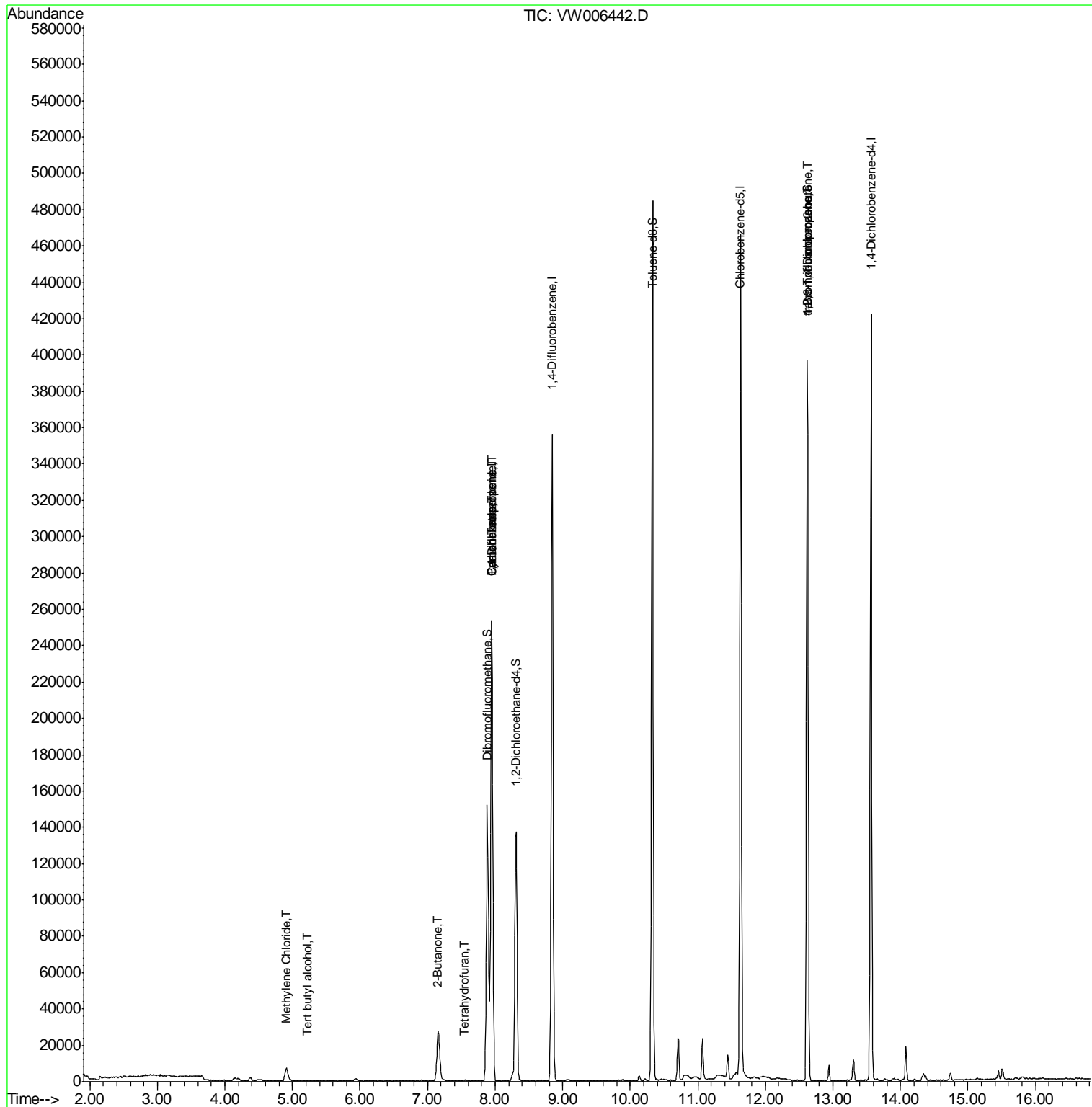
					Qvalue	
11) Tert butyl alcohol	5.22	59	145	1.234	ug/l #	71
16) Acetone	4.15	43	3677	Below	Cal	100
20) Methylene Chloride	4.91	84	6308	1.845	ug/l	93
25) 2-Butanone	7.15	43	2159	4.575	ug/l #	46
29) Tetrahydrofuran	7.54	42	294	1.014	ug/l #	43
31) Cyclohexane	7.95	56	3539	1.107	ug/l #	1
36) 1,1-Dichloropropene	7.95	75	13102	4.453	ug/l #	48
38) Carbon Tetrachloride	7.95	117	18317	5.679	ug/l #	18
76) 1,2,3-Trichloropropane	12.62	75	55460	58.859	ug/l #	100
81) trans-1,4-Dichloro-2-buten	12.62	75	55460	140.695	ug/l #	10

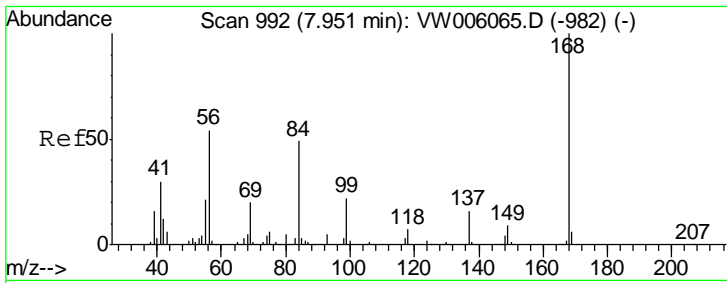
(#) = qualifier out of range (m) = manual integration (+) = signals summed

Data Path : Z:\VOASRV\HPCHEM1\MSVOA W\DATA\VW102918\
 Data File : VW006442.D
 Acq On : 27 Oct 2018 09:35
 Operator : SY/AP
 Sample : J5624-01RE
 Misc : 5.98G/5ML/MSVOA W/SOIL
 ALS Vial : 50 Sample Multiplier: 1

Instrument :
 MSVOA_W
 ClientSampleId :
 PA-SED-01RE

Quant Time: Oct 29 04:05:44 2018
 Quant Method : Z:\VOASRV\HPCHEM1\MSVOA_W\METHOD\82W101518S.M
 Quant Title : SW846 8260
 QLast Update : Thu Oct 18 17:01:24 2018
 Response via : Initial Calibration

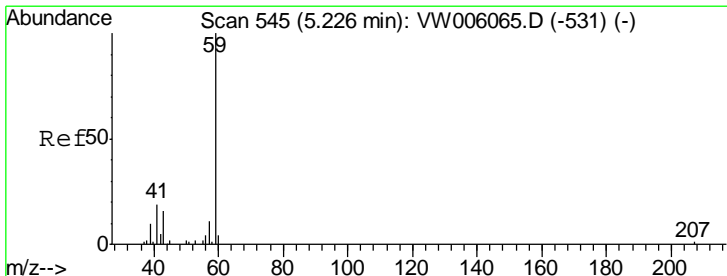
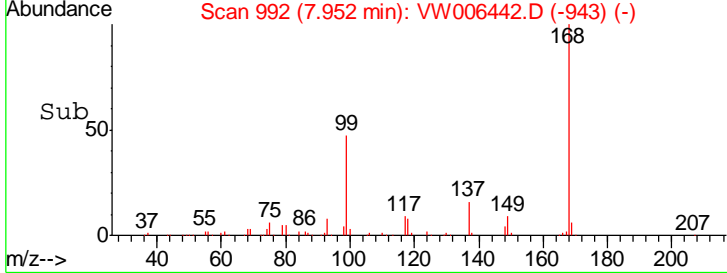
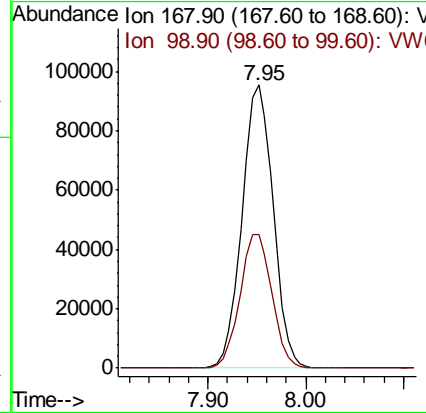
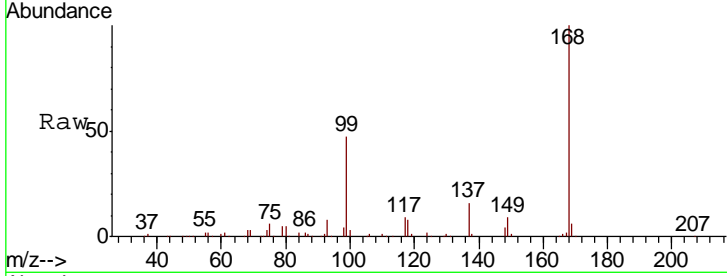




#1
 Pentafluorobenzene
 Concen: 50.000 ug/l
 RT: 7.95 min Scan# 992
 Delta R.T. 0.00 min
 Lab File: VW006442.D
 Acq: 27 Oct 2018 09:35

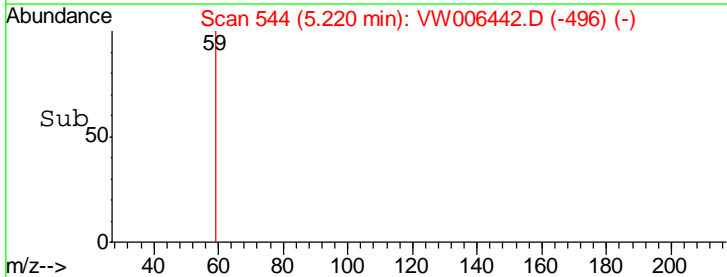
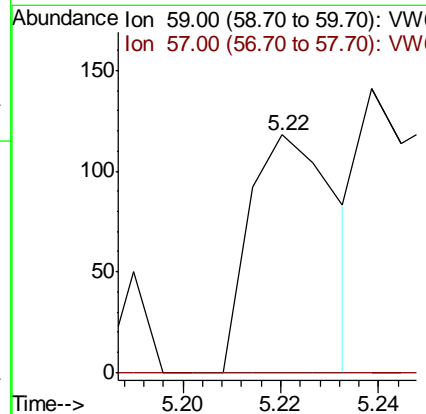
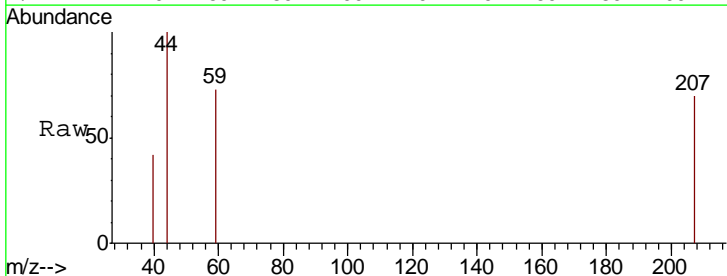
Instrument :
 MSVOA_W
 ClientSampled :
 PA-SED-01RE

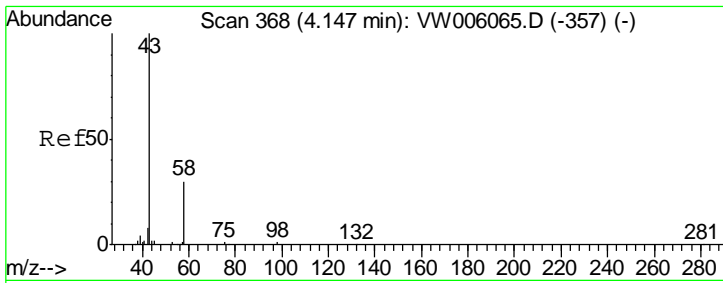
Tgt Ion	Resp	Lower	Upper
168	100		
99	47.0	39.9	59.9



#11
 Tert butyl alcohol
 Concen: 1.234 ug/l
 RT: 5.22 min Scan# 544
 Delta R.T. -0.01 min
 Lab File: VW006442.D
 Acq: 27 Oct 2018 09:35

Tgt Ion	Resp	Lower	Upper
59	100		
57	0.0	8.7	13.1#

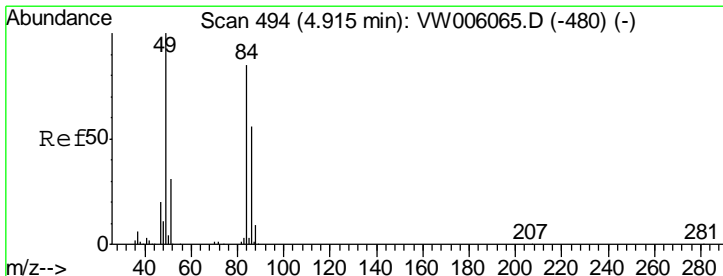
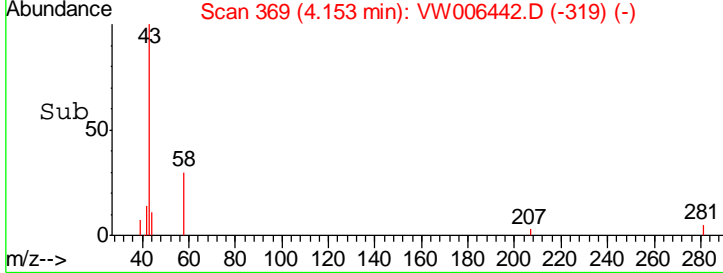
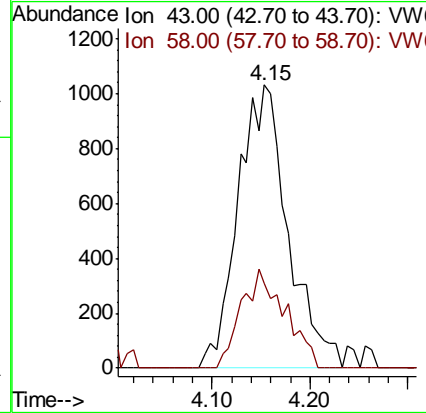
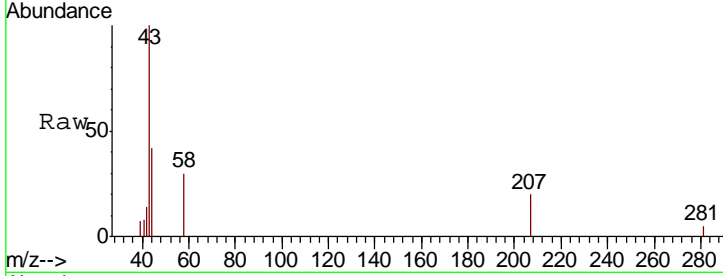




#16
 Acetone
 Concen: Below Cal
 RT: 4.15 min Scan# 369
 Delta R.T. 0.01 min
 Lab File: VW006442.D
 Acq: 27 Oct 2018 09:35

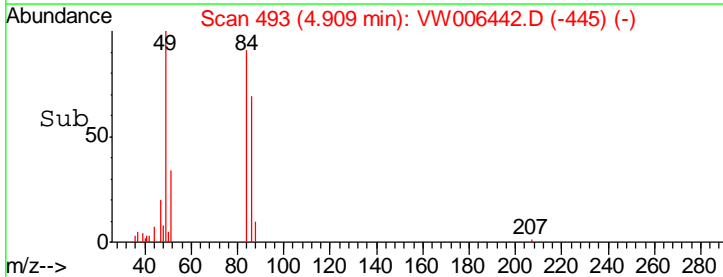
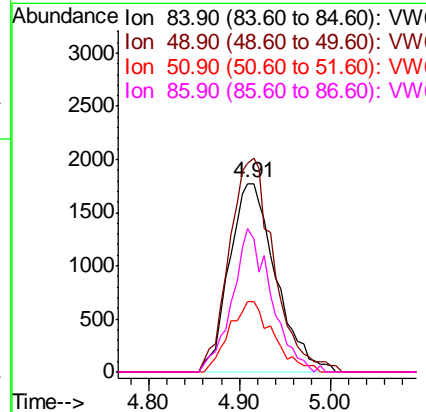
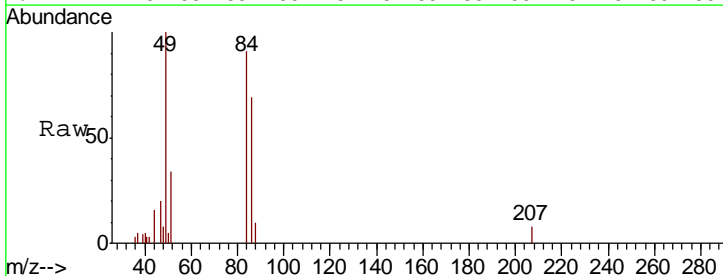
Instrument :
 MSVOA_W
ClientSampled :
 PA-SED-01RE

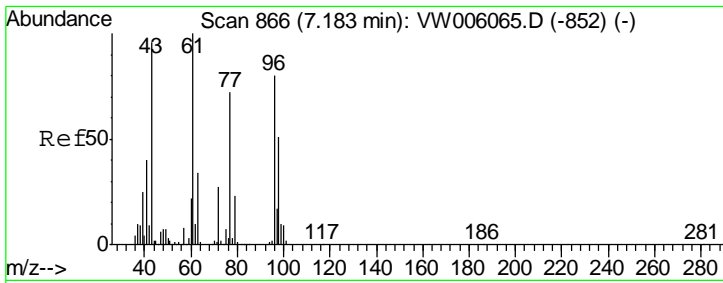
Tgt Ion	Resp	Lower	Upper
43	100		
58	30.1	24.0	36.0



#20
 Methylene Chloride
 Concen: 1.845 ug/l
 RT: 4.91 min Scan# 493
 Delta R.T. -0.01 min
 Lab File: VW006442.D
 Acq: 27 Oct 2018 09:35

Tgt Ion	Resp	Lower	Upper
84	100		
49	110.4	93.6	140.4
51	37.4	29.0	43.4
86	75.7	52.6	79.0

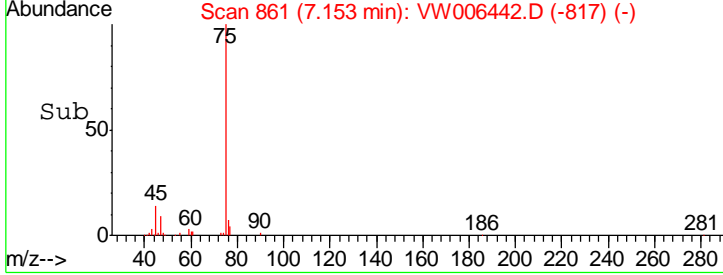
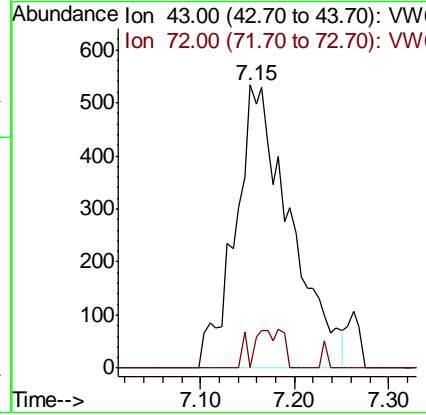
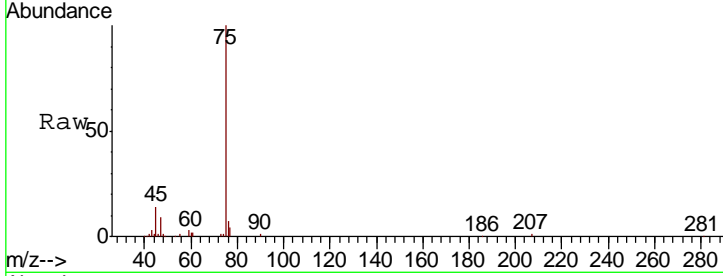




#25
 2-Butanone
 Concen: 4.575 ug/l
 RT: 7.15 min Scan# 861
 Delta R.T. -0.03 min
 Lab File: VW006442.D
 Acq: 27 Oct 2018 09:35

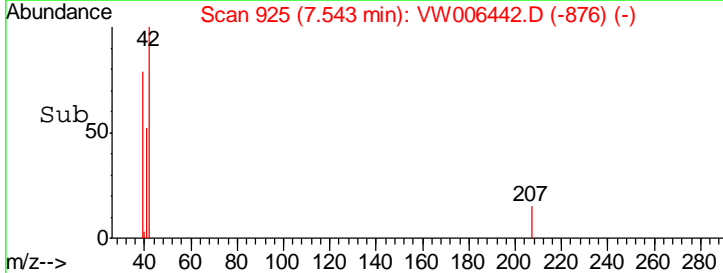
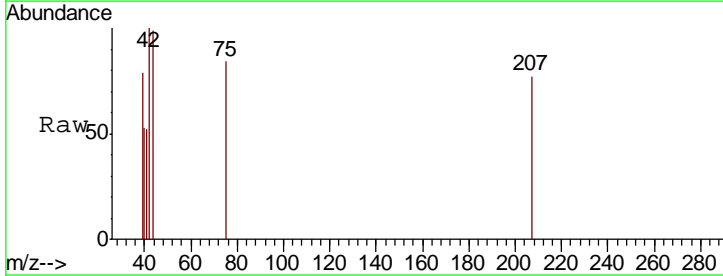
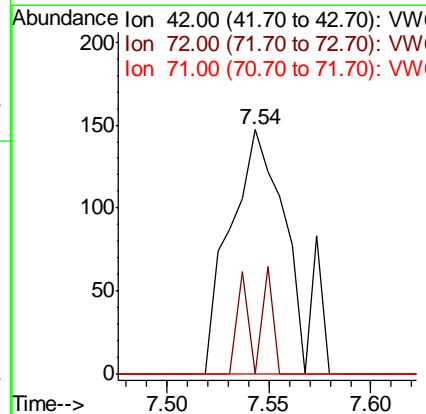
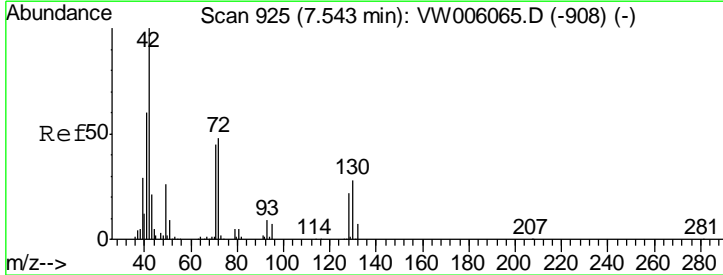
Instrument :
 MSVOA_W
ClientSampled :
 PA-SED-01RE

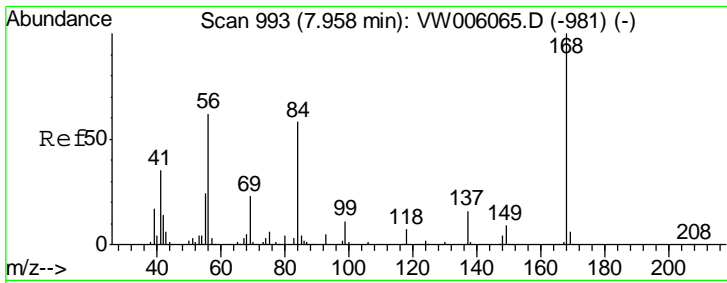
Tgt Ion	Ratio	Lower	Upper
43	100		
72	0.0	22.8	34.2#



#29
 Tetrahydrofuran
 Concen: 1.014 ug/l
 RT: 7.54 min Scan# 925
 Delta R.T. 0.00 min
 Lab File: VW006442.D
 Acq: 27 Oct 2018 09:35

Tgt Ion	Ratio	Lower	Upper
42	100		
72	15.6	38.0	57.0#
71	0.0	35.3	52.9#

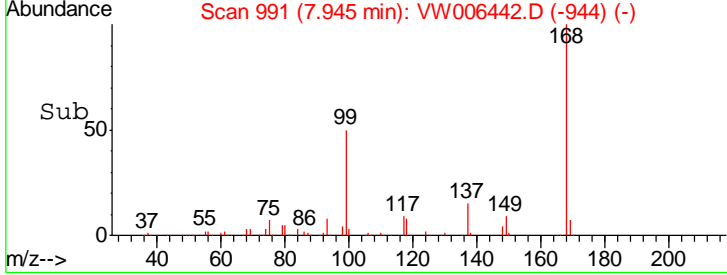
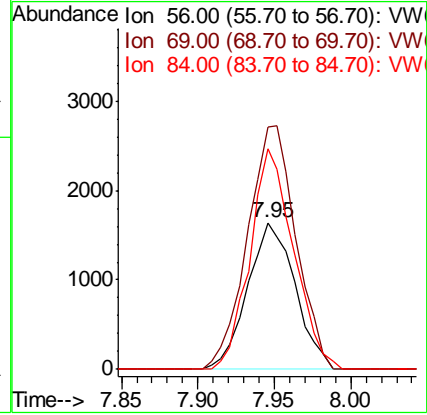
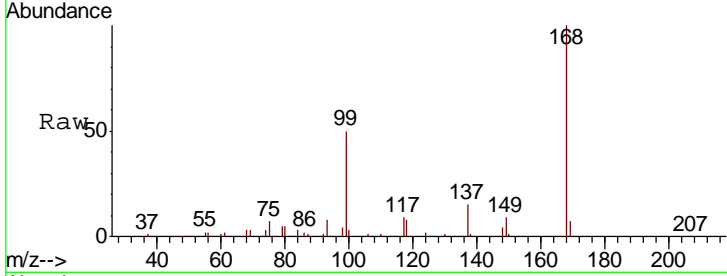




#31
 Cyclohexane
 Concen: 1.107 ug/l
 RT: 7.95 min Scan# 991
 Delta R.T. -0.01 min
 Lab File: VW006442.D
 Acq: 27 Oct 2018 09:35

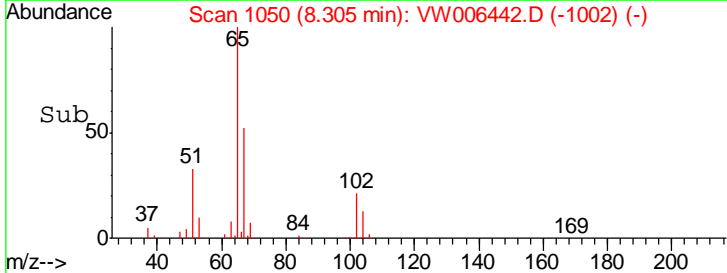
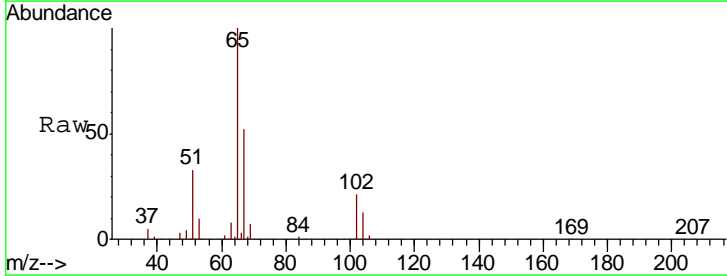
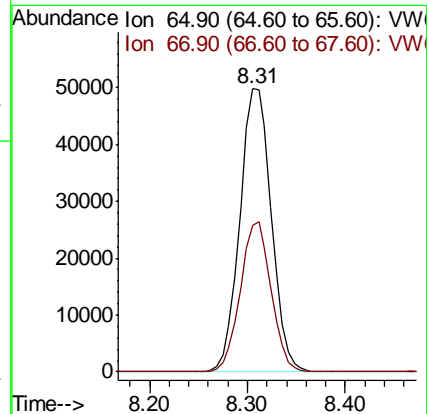
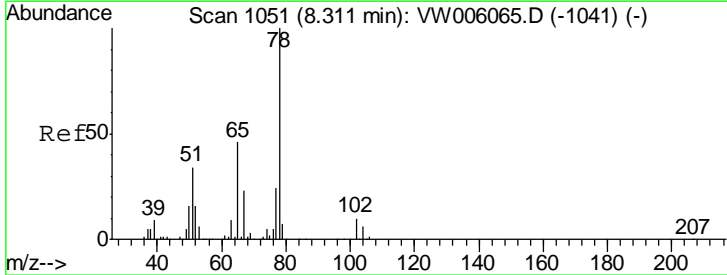
Instrument :
 MSVOA_W
 ClientSampled :
 PA-SED-01RE

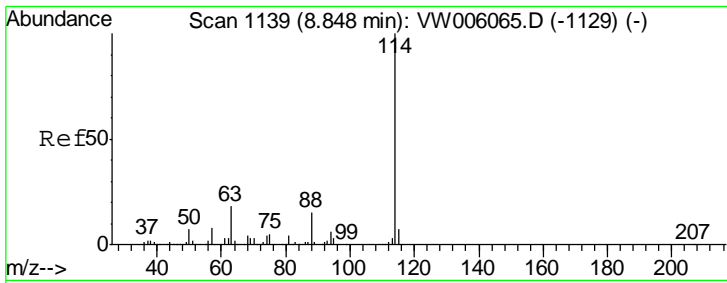
Tgt Ion	Resp	Lower	Upper
56	100		
69	165.6	29.4	44.0#
84	150.8	74.0	111.0#



#33
 1,2-Dichloroethane-d4
 Concen: 63.790 ug/l
 RT: 8.31 min Scan# 1050
 Delta R.T. -0.01 min
 Lab File: VW006442.D
 Acq: 27 Oct 2018 09:35

Tgt Ion	Resp	Lower	Upper
65	100		
67	51.6	0.0	101.0

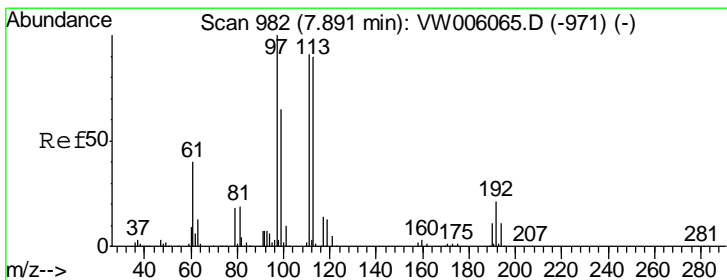
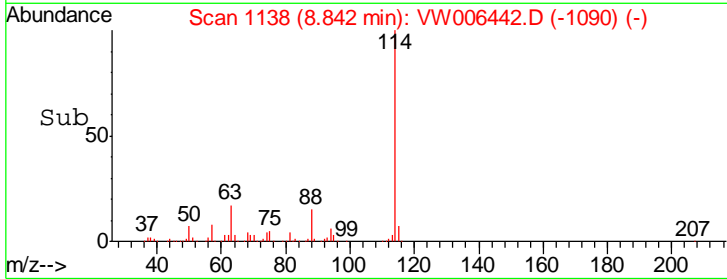
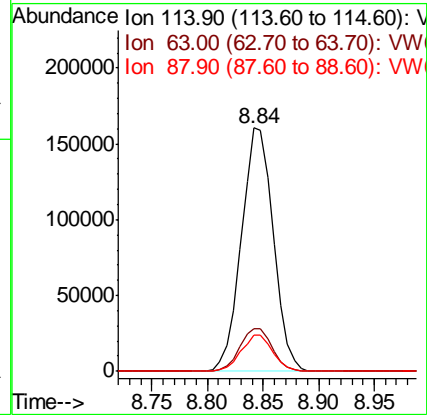
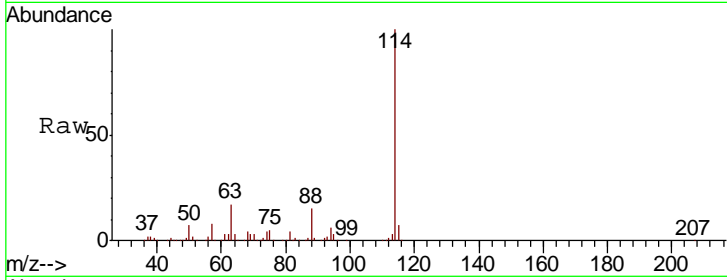




#34
 1,4-Difluorobenzene
 Concen: 50.000 ug/l
 RT: 8.84 min Scan# 1138
 Delta R.T. -0.01 min
 Lab File: VW006442.D
 Acq: 27 Oct 2018 09:35

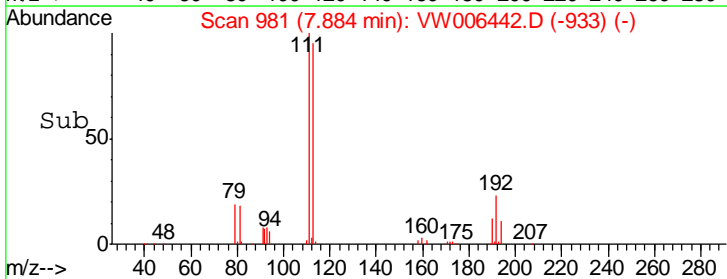
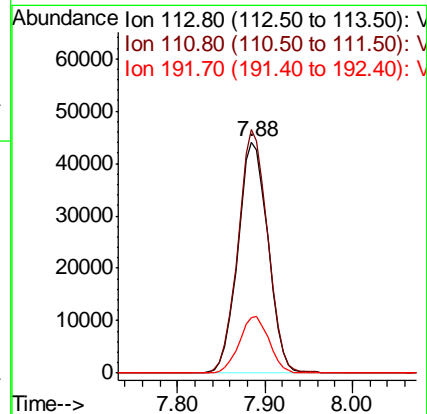
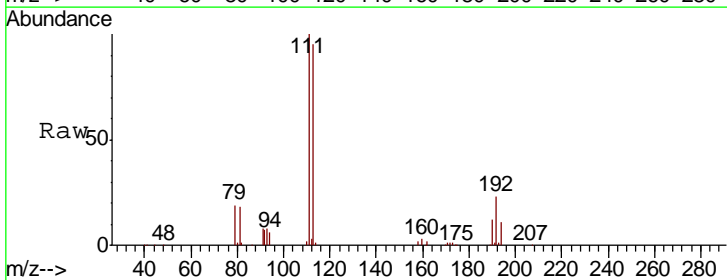
Instrument :
 MSVOA_W
 ClientSampled :
 PA-SED-01RE

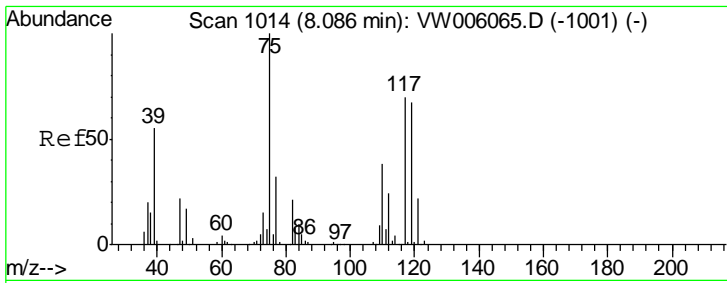
Tgt Ion	Resp	Lower	Upper
114	319195		
63	17.5	0.0	36.8
88	14.6	0.0	29.0



#35
 Dibromofluoromethane
 Concen: 55.994 ug/l
 RT: 7.88 min Scan# 981
 Delta R.T. -0.01 min
 Lab File: VW006442.D
 Acq: 27 Oct 2018 09:35

Tgt Ion	Resp	Lower	Upper
113	105610		
111	103.7	81.4	122.0
192	24.1	18.7	28.1

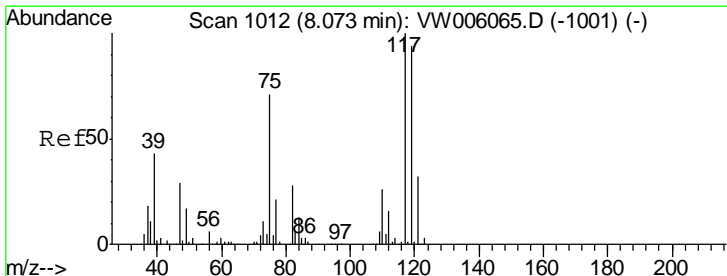
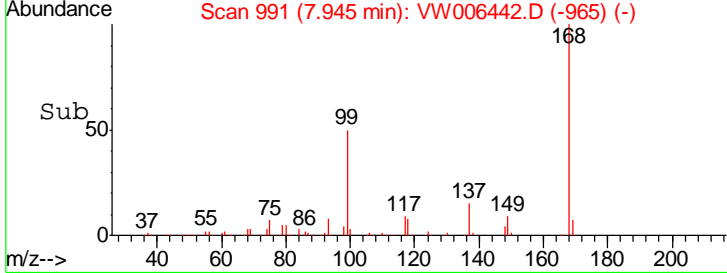
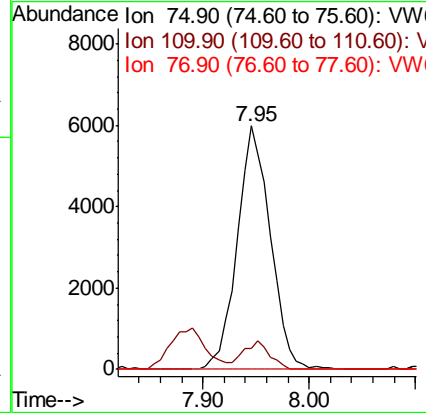
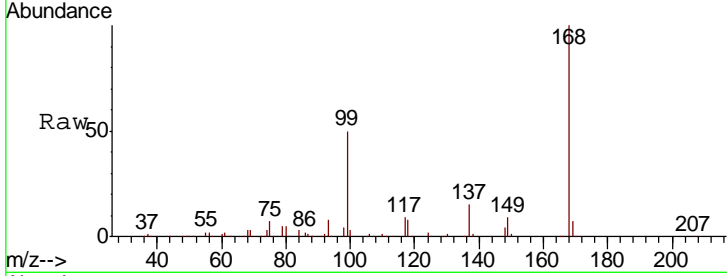




#36
 1,1-Dichloropropene
 Concen: 4.453 ug/l
 RT: 7.95 min Scan# 991
 Delta R.T. -0.14 min
 Lab File: VW006442.D
 Acq: 27 Oct 2018 09:35

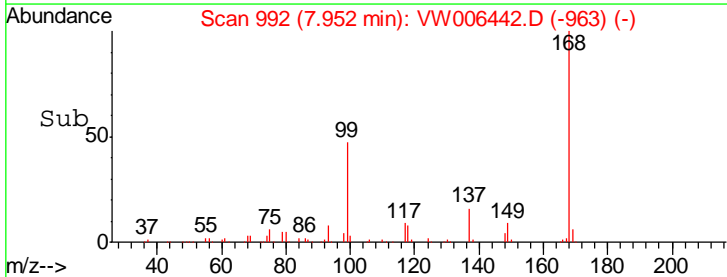
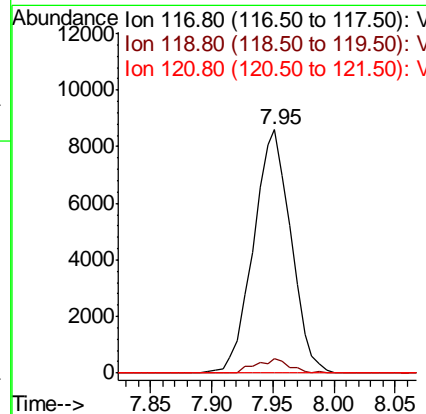
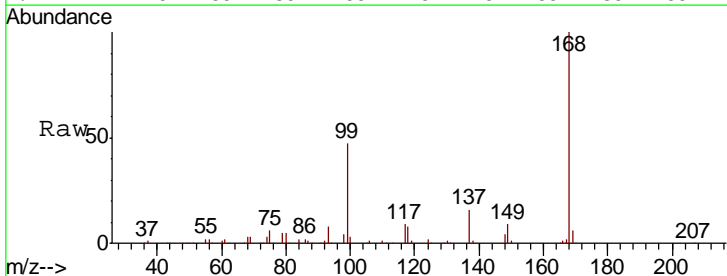
Instrument : MSVOA_W
 ClientSampled : PA-SED-01RE

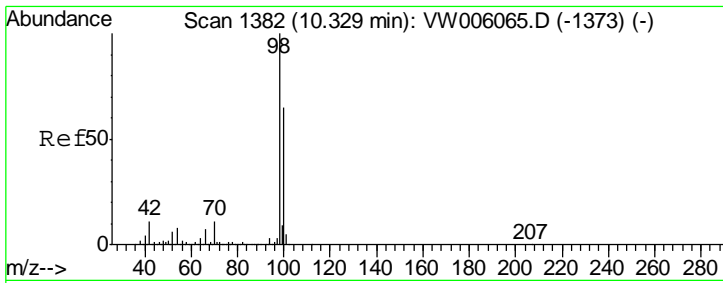
Tgt Ion	Resp	Lower	Upper
75	13102		
110	9.1	19.1	57.1#
77	0.0	25.0	37.4#



#38
 Carbon Tetrachloride
 Concen: 5.679 ug/l
 RT: 7.95 min Scan# 992
 Delta R.T. -0.12 min
 Lab File: VW006442.D
 Acq: 27 Oct 2018 09:35

Tgt Ion	Resp	Lower	Upper
117	18317		
119	6.1	75.2	112.8#
121	0.0	25.3	37.9#

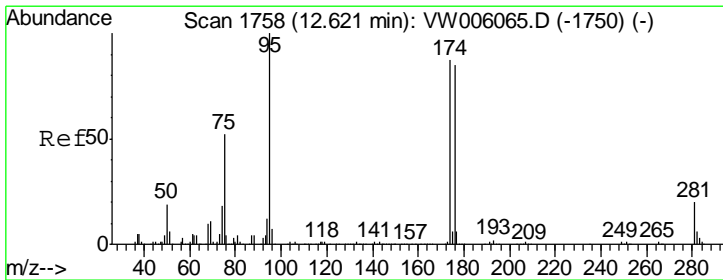
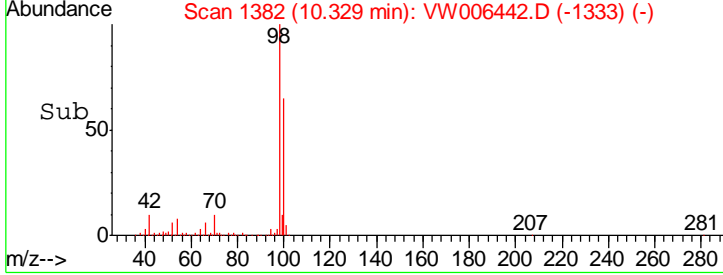
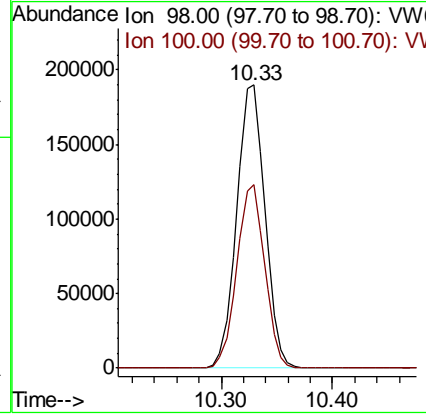
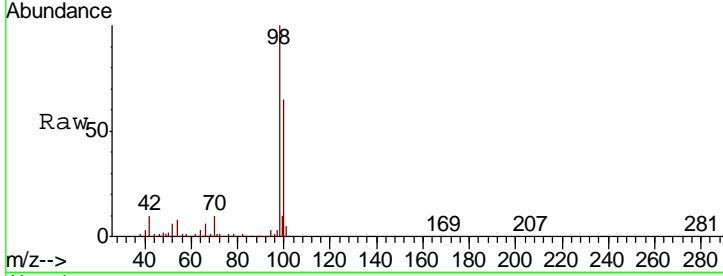




#50
 Toluene-d8
 Concen: 46.458 ug/l
 RT: 10.33 min Scan# 1382
 Delta R.T. 0.00 min
 Lab File: VW006442.D
 Acq: 27 Oct 2018 09:35

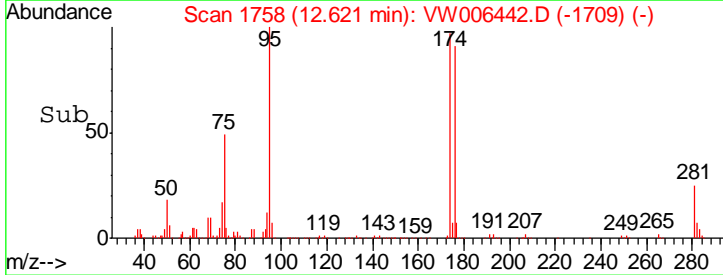
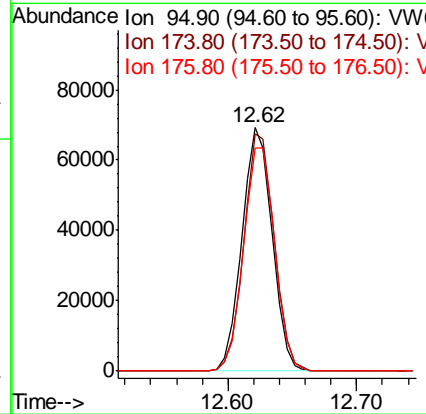
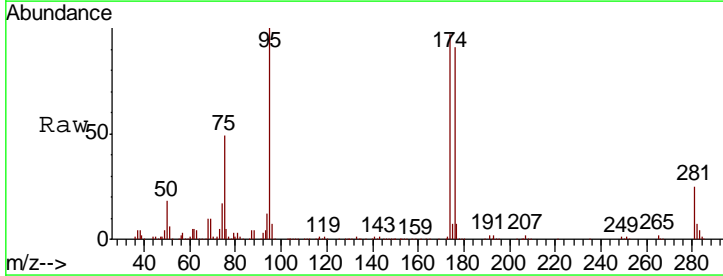
Instrument : MSVOA_W
 ClientSampled : PA-SED-01RE

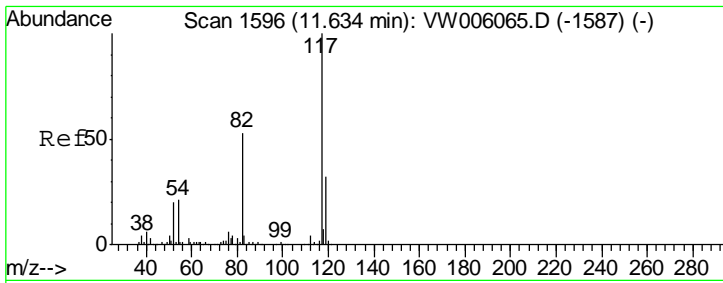
Tgt Ion	Resp	Lower	Upper
98	333371		
100	64.3	51.6	77.4



#62
 4-Bromofluorobenzene
 Concen: 41.441 ug/l
 RT: 12.62 min Scan# 1758
 Delta R.T. 0.00 min
 Lab File: VW006442.D
 Acq: 27 Oct 2018 09:35

Tgt Ion	Resp	Lower	Upper
95	111687		
174	97.7	0.0	186.0
176	94.9	0.0	181.6

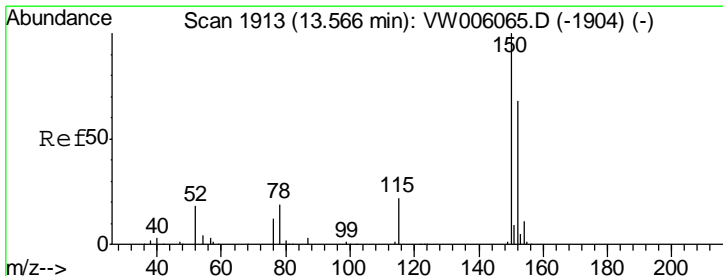
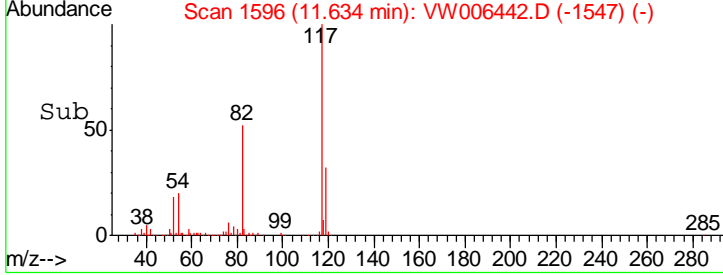
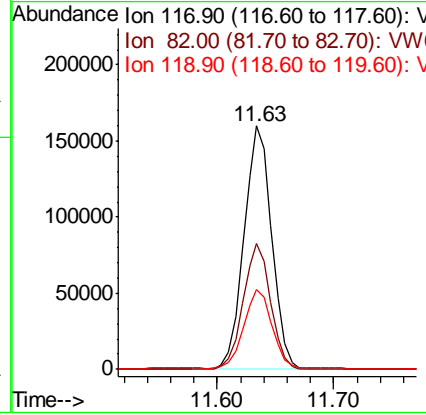
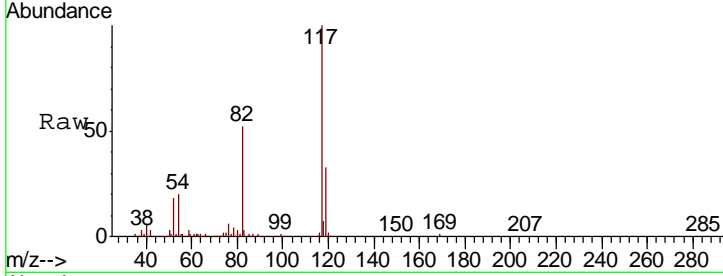




#63
 Chlorobenzene-d5
 Concen: 50.000 ug/l
 RT: 11.63 min Scan# 1596
 Delta R.T. 0.00 min
 Lab File: VW006442.D
 Acq: 27 Oct 2018 09:35

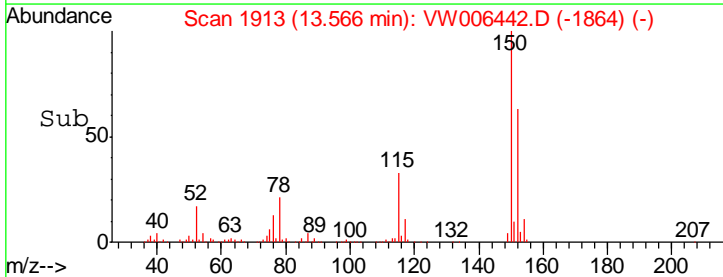
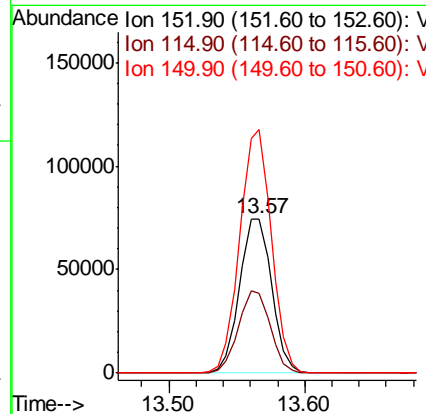
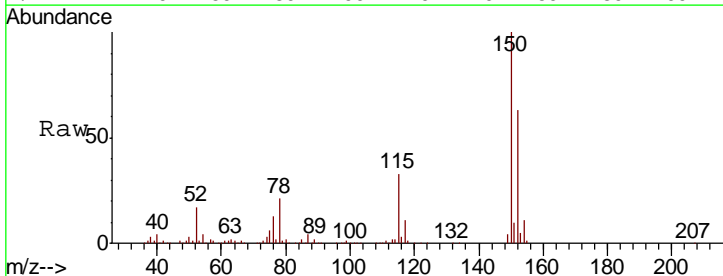
Instrument : MSVOA_W
 ClientSampled : PA-SED-01RE

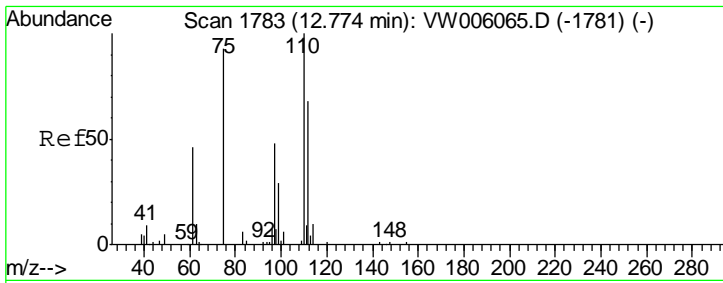
Tgt Ion	Resp	Lower	Upper
117	265520		
82	51.6	42.1	63.1
119	32.4	25.8	38.6



#72
 1,4-Dichlorobenzene-d4
 Concen: 50.000 ug/l
 RT: 13.57 min Scan# 1913
 Delta R.T. 0.00 min
 Lab File: VW006442.D
 Acq: 27 Oct 2018 09:35

Tgt Ion	Resp	Lower	Upper
152	123364		
115	53.0	27.8	83.3
150	155.0	0.0	349.2

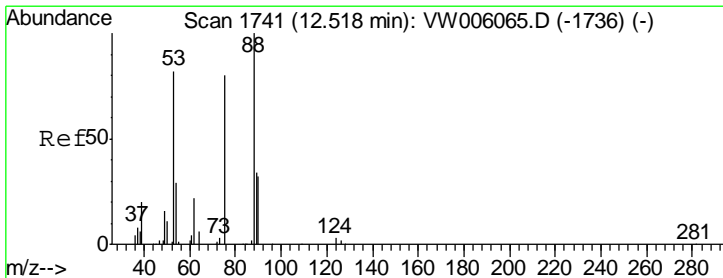
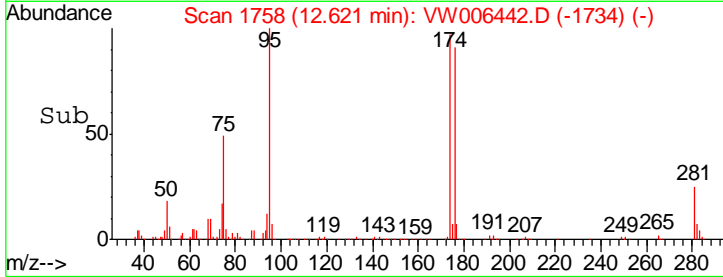
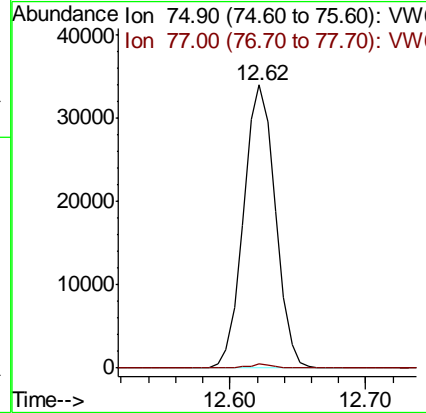
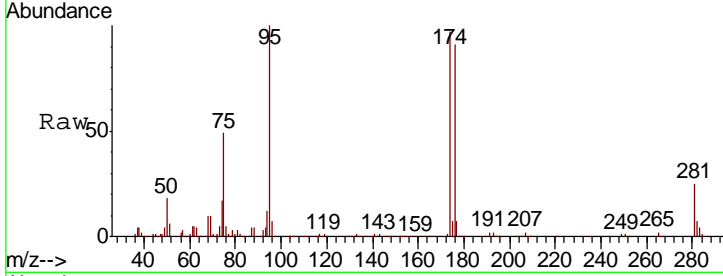




#76
 1,2,3-Trichloropropane
 Concen: 58.859 ug/l
 RT: 12.62 min Scan# 1758
 Delta R.T. -0.15 min
 Lab File: VW006442.D
 Acq: 27 Oct 2018 09:35

Instrument :
 MSVOA_W
 ClientSampled :
 PA-SED-01RE

Tgt Ion: 75 Resp: 55460
 Ion Ratio Lower Upper
 75 100
 77 1.2 0.0 0.0#



#81
 trans-1,4-Dichloro-2-butene
 Concen: 140.695 ug/l
 RT: 12.62 min Scan# 1758
 Delta R.T. 0.10 min
 Lab File: VW006442.D
 Acq: 27 Oct 2018 09:35

Tgt Ion: 75 Resp: 55460
 Ion Ratio Lower Upper
 75 100
 53 0.0 79.8 119.6#
 89 0.0 37.5 56.3#

