

Data Path : Z:\voasrv\HPCHEM1\MSVOA_W\Data\VW102924\
 Data File : VW030818.D
 Acq On : 29 Oct 2024 20:52
 Operator : SY/MD
 Sample : P4568-19
 Misc : 5.20g/10mL/MSVOA_W/SOIL/A
 ALS Vial : 20 Sample Multiplier: 1

Instrument :
 MSVOA_W
 ClientSampleId :

Quant Time: Oct 30 01:20:08 2024
 Quant Method : Z:\voasrv\HPCHEM1\MSVOA_W\Method\SFAMWLM100924SMA.M
 Quant Title : SFAM01.0
 QLast Update : Wed Oct 30 01:14:06 2024
 Response via : Initial Calibration

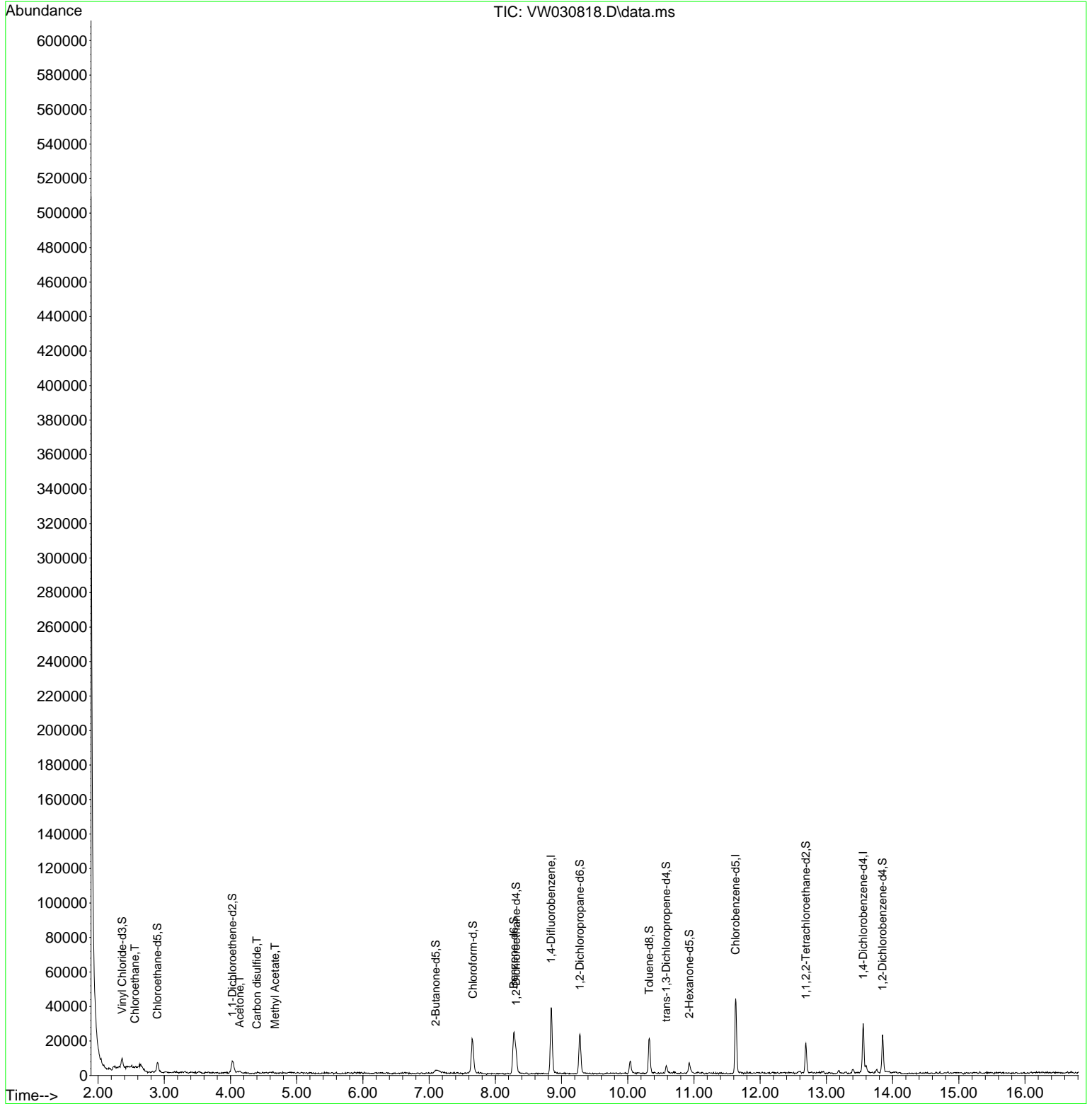
Compound	R.T.	QIon	Response	Conc	Units	Dev(Min)
Internal Standards						
1) 1,4-Difluorobenzene	8.843	114	28210	25.000	ug/L	0.00
28) Chlorobenzene-d5	11.629	117	23367	25.000	ug/L	0.00
58) 1,4-Dichlorobenzene-d4	13.556	152	6814	25.000	ug/L	0.00
System Monitoring Compounds						
4) Vinyl Chloride-d3	2.363	65	5038	11.362	ug/L	0.00
Spiked Amount	25.000	Range 30 - 150	Recovery =	45.440%		
7) Chloroethane-d5	2.893	69	5557	16.556	ug/L	0.00
Spiked Amount	25.000	Range 30 - 150	Recovery =	66.240%		
11) 1,1-Dichloroethene-d2	4.027	65	2200	11.929	ug/L	0.01
Spiked Amount	25.000	Range 45 - 110	Recovery =	47.720%		
21) 2-Butanone-d5	7.100	46	2009	25.176	ug/L	0.02
Spiked Amount	50.000	Range 20 - 135	Recovery =	50.360%		
24) Chloroform-d	7.661	84	19294	23.916	ug/L	0.01
Spiked Amount	25.000	Range 40 - 150	Recovery =	95.680%		
26) 1,2-Dichloroethane-d4	8.313	65	9738	23.213	ug/L	0.01
Spiked Amount	25.000	Range 70 - 130	Recovery =	92.840%		
32) Benzene-d6	8.276	84	23646	17.435	ug/L	0.00
Spiked Amount	25.000	Range 20 - 135	Recovery =	69.760%		
36) 1,2-Dichloropropane-d6	9.276	67	10050	25.247	ug/L	0.00
Spiked Amount	25.000	Range 70 - 120	Recovery =	101.000%		
41) Toluene-d8	10.325	98	13311	10.751	ug/L	0.00
Spiked Amount	25.000	Range 30 - 130	Recovery =	43.000%		
43) trans-1,3-Dichloroprop...	10.581	79	2184	13.103	ug/L	0.00
Spiked Amount	25.000	Range 30 - 135	Recovery =	52.400%		
47) 2-Hexanone-d5	10.928	63	1623	31.656	ug/L	0.00
Spiked Amount	50.000	Range 20 - 135	Recovery =	63.320%		
56) 1,1,2,2-Tetrachloroeth...	12.690	84	7775	26.596	ug/L	0.00
Spiked Amount	25.000	Range 45 - 120	Recovery =	106.400%		
66) 1,2-Dichlorobenzene-d4	13.849	152	4897	21.240	ug/L	0.00
Spiked Amount	25.000	Range 75 - 120	Recovery =	84.960%		
Target Compounds						
8) Chloroethane	2.558	64	147	0.467	ug/L	89
13) Acetone	4.137	43	1196	10.237	ug/L	63
14) Carbon disulfide	4.399	76	637	0.515	ug/L #	75
15) Methyl Acetate	4.673	43	60	0.416	ug/L #	51

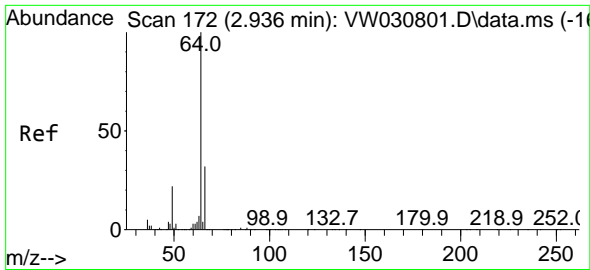
(#) = qualifier out of range (m) = manual integration (+) = signals summed

Data Path : Z:\voasrv\HPCHEM1\MSVOA_W\Data\VW102924\
 Data File : VW030818.D
 Acq On : 29 Oct 2024 20:52
 Operator : SY/MD
 Sample : P4568-19
 Misc : 5.20g/10mL/MSVOA_W/SOIL/A
 ALS Vial : 20 Sample Multiplier: 1

Instrument :
 MSVOA_W
 ClientSampleId :

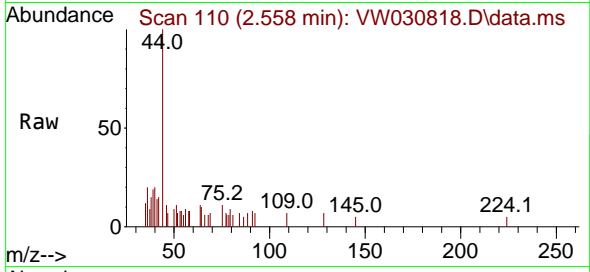
Quant Time: Oct 30 01:20:08 2024
 Quant Method : Z:\voasrv\HPCHEM1\MSVOA_W\Method\SFAMWLM100924SMA.M
 Quant Title : SFAM01.0
 QLast Update : Wed Oct 30 01:14:06 2024
 Response via : Initial Calibration



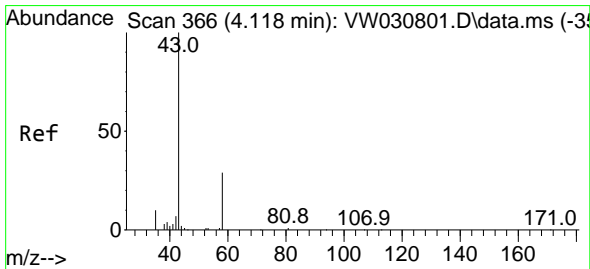
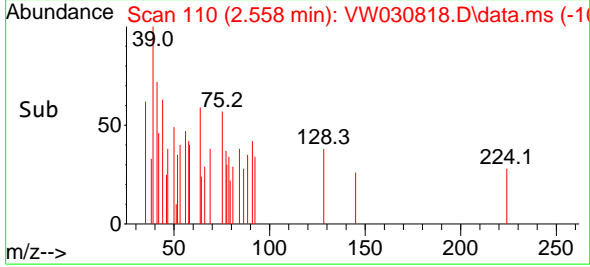
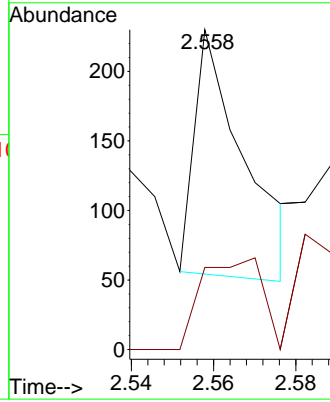


#8
 Chloroethane
 Concen: 0.467 ug/L
 RT: 2.558 min Scan# 110
 Delta R.T. -0.378 min
 Lab File: VW030818.D
 Acq: 29 Oct 2024 20:52

Instrument : MSVOA_W
 ClientSampleId :

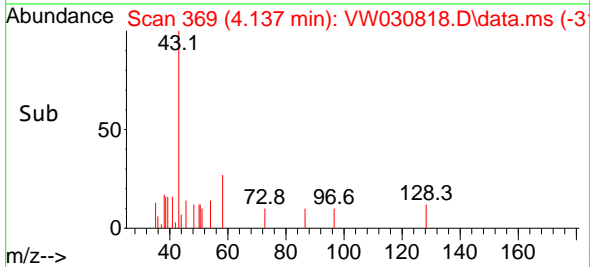
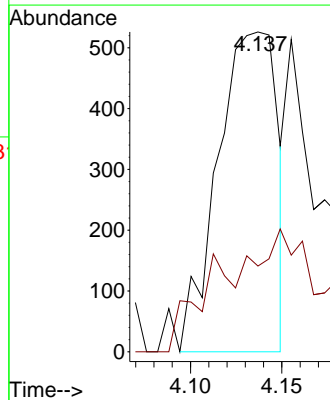
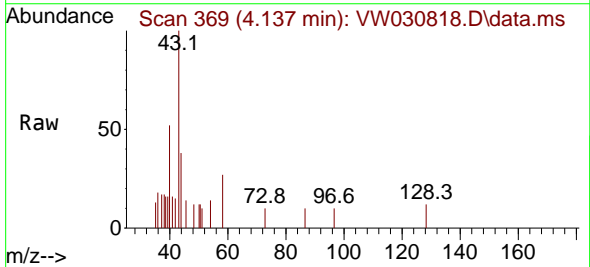


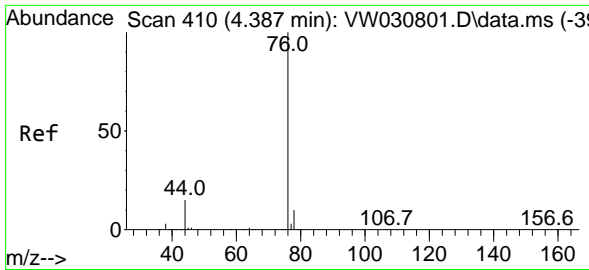
Tgt Ion: 64 Resp: 147
 Ion Ratio Lower Upper
 64 100
 66 25.7 22.3 41.5



#13
 Acetone
 Concen: 10.237 ug/L
 RT: 4.137 min Scan# 369
 Delta R.T. 0.019 min
 Lab File: VW030818.D
 Acq: 29 Oct 2024 20:52

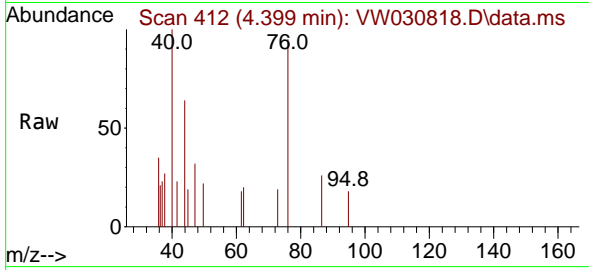
Tgt Ion: 43 Resp: 1196
 Ion Ratio Lower Upper
 43 100
 58 9.1 0.0 57.6



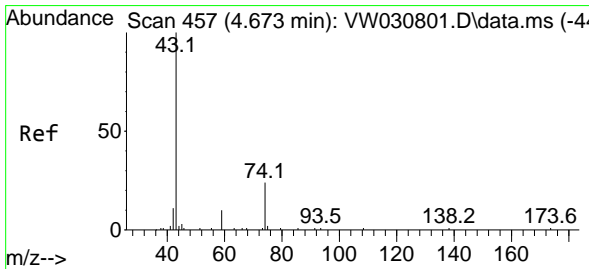
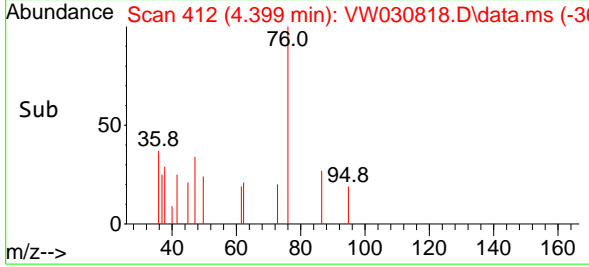
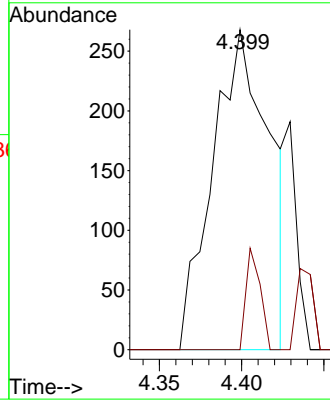


#14
 Carbon disulfide
 Concen: 0.515 ug/L
 RT: 4.399 min Scan# 411
 Delta R.T. 0.012 min
 Lab File: VW030818.D
 Acq: 29 Oct 2024 20:52

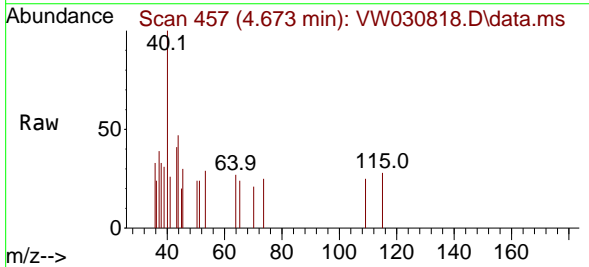
Instrument :
 MSVOA_W
 ClientSampleId :



Tgt Ion: 76 Resp: 637
 Ion Ratio Lower Upper
 76 100
 78 0.0 7.1 10.7#



#15
 Methyl Acetate
 Concen: 0.416 ug/L
 RT: 4.673 min Scan# 457
 Delta R.T. 0.000 min
 Lab File: VW030818.D
 Acq: 29 Oct 2024 20:52



Tgt Ion: 43 Resp: 60
 Ion Ratio Lower Upper
 43 100
 74 0.0 19.3 28.9#

