

Data Path : Z:\VOASRV\HPCHEM1\MSVOA W\DATA\VW103019\  
 Data File : VW013832.D  
 Acq On : 30 Oct 2019 12:53  
 Operator : SY/VA  
 Sample : K5565-06RE  
 Misc : 1.44G/10ML/MSVOA W/SOIL  
 ALS Vial : 1 Sample Multiplier: 1

Instrument :  
 MSVOA\_W  
 ClientSampleId :  
 JLNA5

Quant Time: Oct 31 05:32:09 2019  
 Quant Method : Z:\VOASRV\HPCHEM1\MSVOA\_W\METHOD\SOM2WLM101819S.M  
 Quant Title : VOC Analysis  
 QLast Update : Thu Oct 31 05:29:18 2019  
 Response via : Initial Calibration

Internal Standards	R.T.	QIon	Response	Conc	Units	Dev(Min)
1) 1,4-Difluorobenzene	8.84	114	309450	25.00	ug/L	0.00
28) Chlorobenzene-d5	11.63	117	267518	25.00	ug/L	0.00
60) 1,4-Dichlorobenzene-d4	13.56	152	96763	25.00	ug/L	0.00

System Monitoring Compounds

4) Vinyl Chloride-d3	2.36	65	105449	27.77	ug/L	0.00
Spiked Amount	25.000	Range	30 - 150	Recovery	=	111.08%
7) Chloroethane-d5	2.89	69	85907	24.24	ug/L	0.00
Spiked Amount	25.000	Range	30 - 150	Recovery	=	96.96%
10) 1,1-Dichloroethene-d2	4.02	63	158024	18.84	ug/L	0.00
Spiked Amount	25.000	Range	45 - 110	Recovery	=	75.36%
20) 2-Butanone-d5	7.07	46	66565	49.02	ug/L	0.00
Spiked Amount	50.000	Range	20 - 135	Recovery	=	98.04%
24) Chloroform-d	7.65	84	218615	25.25	ug/L	0.00
Spiked Amount	25.000	Range	40 - 150	Recovery	=	101.00%
26) 1,2-Dichloroethane-d4	8.31	65	113779	25.13	ug/L	0.00
Spiked Amount	25.000	Range	70 - 130	Recovery	=	100.52%
29) Benzene-d6	8.27	84	467466	29.08	ug/L	0.00
Spiked Amount	25.000	Range	20 - 135	Recovery	=	116.32%
33) 1,2-Dichloropropane-d6	9.27	67	137506	28.65	ug/L	0.00
Spiked Amount	25.000	Range	70 - 120	Recovery	=	114.60%
37) Toluene-d8	10.32	98	413039	27.86	ug/L	0.00
Spiked Amount	25.000	Range	30 - 130	Recovery	=	111.44%
38) trans-1,3-Dichloropropene-	10.58	79	50921	23.52	ug/L	0.00
Spiked Amount	25.000	Range	30 - 135	Recovery	=	94.08%
39) 2-Hexanone-d5	10.93	63	47479	51.74	ug/L	0.00
Spiked Amount	50.000	Range	20 - 135	Recovery	=	103.48%
48) 1,1,2,2-Tetrachloroethane-	12.69	84	85086	21.64	ug/L	0.00
Spiked Amount	25.000	Range	45 - 120	Recovery	=	86.56%
61) 1,2-Dichlorobenzene-d4	13.85	152	82537	24.14	ug/L	0.00
Spiked Amount	25.000	Range	75 - 120	Recovery	=	96.56%

Target Compounds

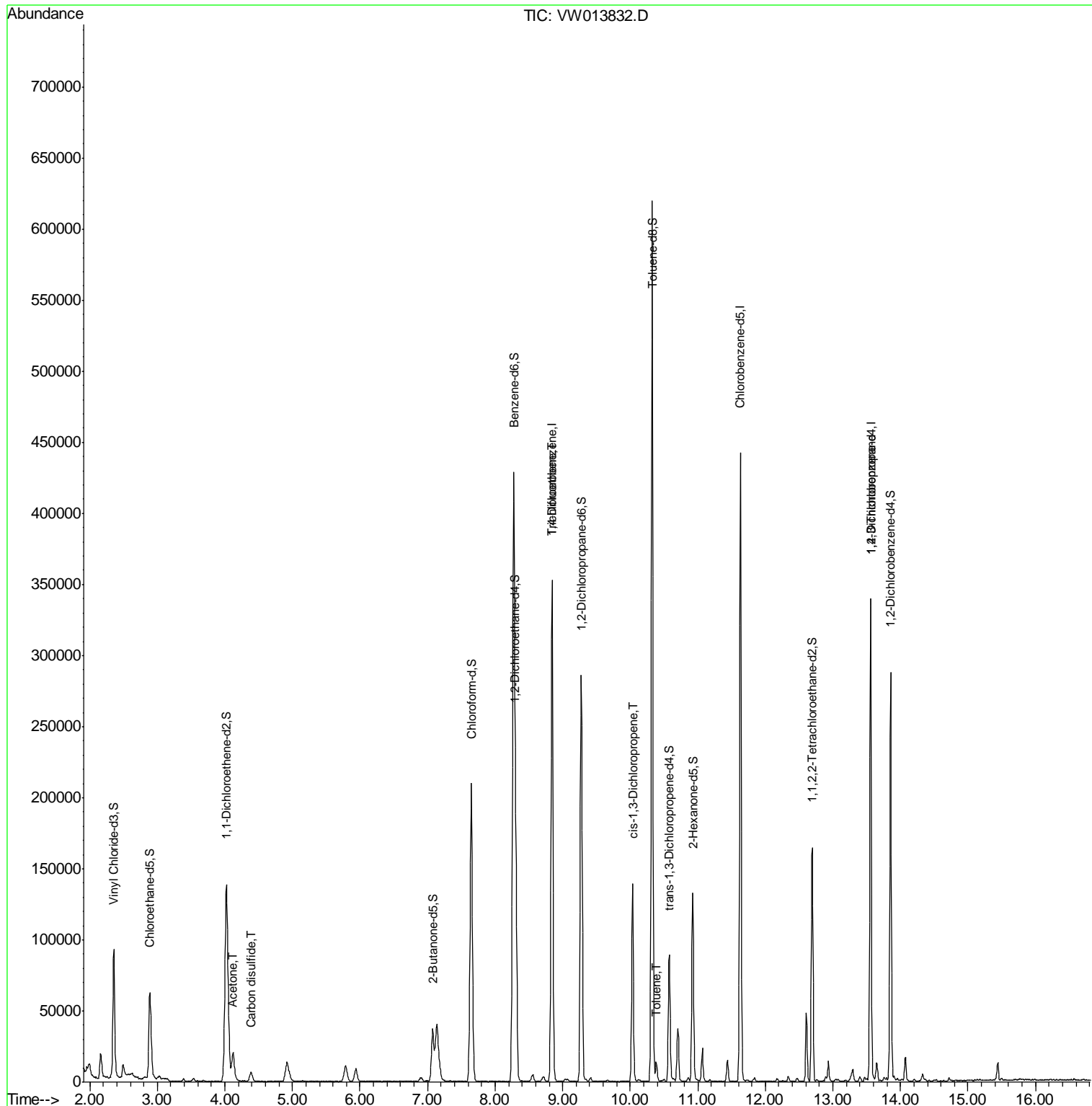
Target Compounds	R.T.	QIon	Response	Conc	Units	Ovalue
13) Acetone	4.12	43	34839	23.116	ug/L	95
14) Carbon disulfide	4.39	76	12564	0.893	ug/L	100
35) Trichloroethene	8.84	95	9454	1.920	ug/L #	2
42) cis-1,3-Dichloropropene	10.03	75	3086	0.416	ug/L #	71
44) Toluene	10.38	91	9894	0.480	ug/L	98
59) 1,2,3-Trichloropropane	13.56	75	10325	3.264	ug/L	89

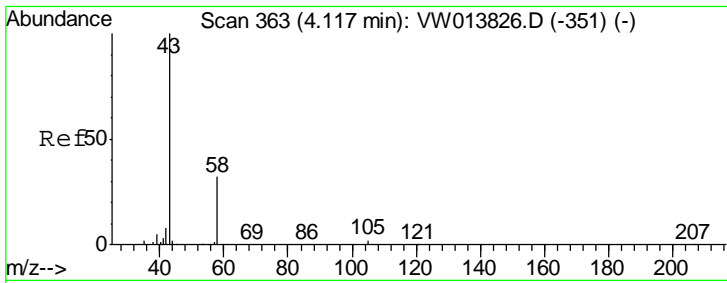
(#) = qualifier out of range (m) = manual integration (+) = signals summed

Data Path : Z:\VOASRV\HPCHEM1\MSVOA W\DATA\VW103019\  
 Data File : VW013832.D  
 Acq On : 30 Oct 2019 12:53  
 Operator : SY/VA  
 Sample : K5565-06RE  
 Misc : 1.44G/10ML/MSVOA W/SOIL  
 ALS Vial : 1 Sample Multiplier: 1

Instrument :  
 MSVOA\_W  
 Client Sampled :  
 JLNA5

Quant Time: Oct 31 05:32:09 2019  
 Quant Method : Z:\VOASRV\HPCHEM1\MSVOA\_W\METHOD\SOM2WLM101819S.M  
 Quant Title : VOC Analysis  
 QLast Update : Thu Oct 31 05:29:18 2019  
 Response via : Initial Calibration

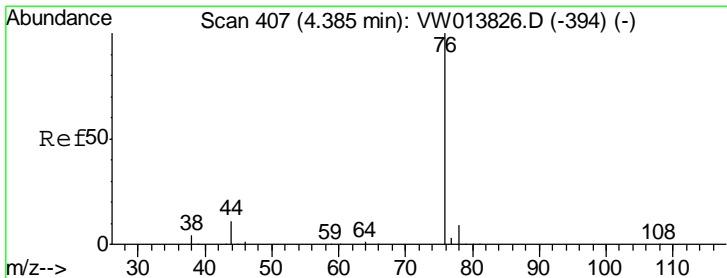
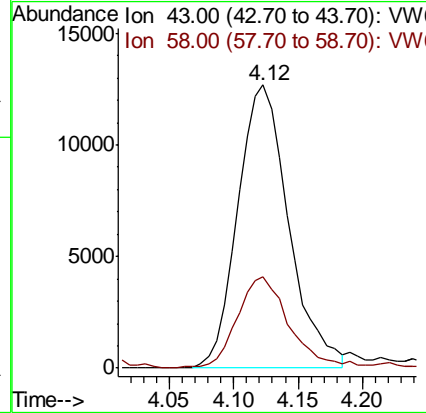
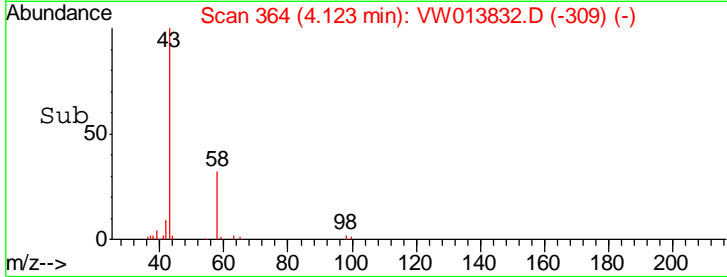
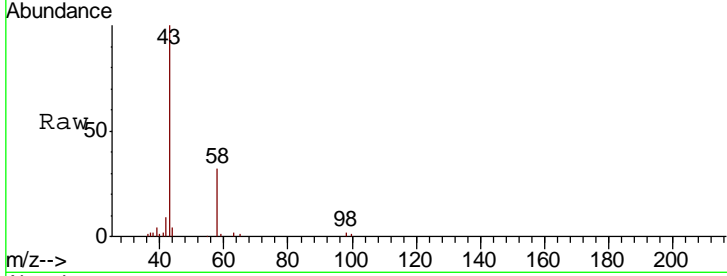




#13  
 Acetone  
 Concen: 23.116 ug/L  
 RT: 4.12 min Scan# 364  
 Delta R.T. 0.01 min  
 Lab File: VW013832.D  
 Acq: 30 Oct 2019 12:53

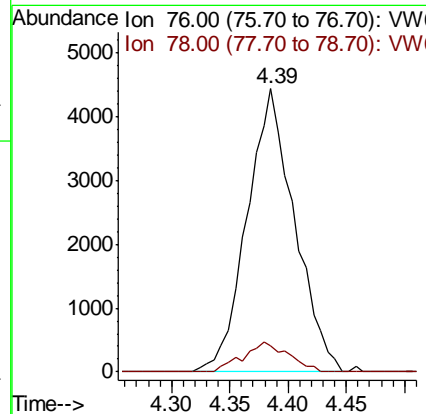
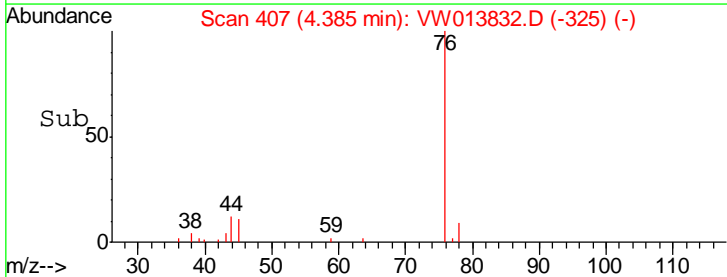
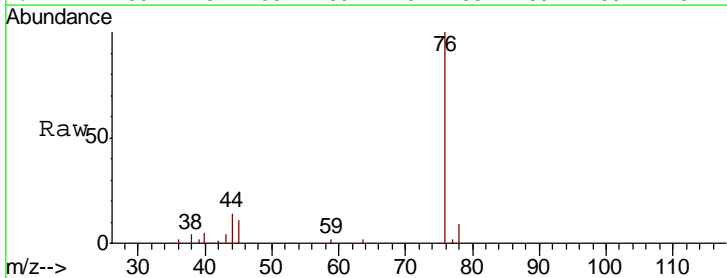
Instrument :  
 MSVOA\_W  
 ClientSampled :  
 JLNA5

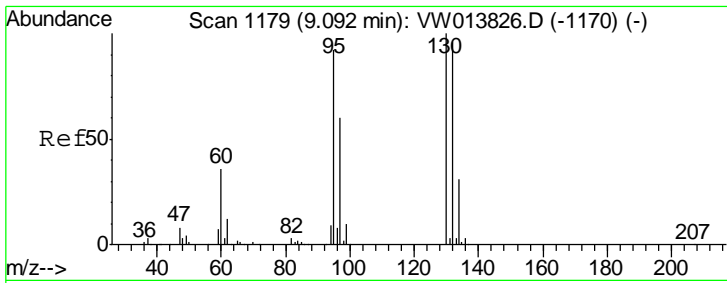
Tgt Ion: 43 Resp: 34839  
 Ion Ratio Lower Upper  
 43 100  
 58 32.2 0.0 70.4



#14  
 Carbon disulfide  
 Concen: 0.893 ug/L  
 RT: 4.39 min Scan# 407  
 Delta R.T. 0.00 min  
 Lab File: VW013832.D  
 Acq: 30 Oct 2019 12:53

Tgt Ion: 76 Resp: 12564  
 Ion Ratio Lower Upper  
 76 100  
 78 9.1 7.1 10.7





#35

Trichloroethene

Concen: 1.920 ug/L

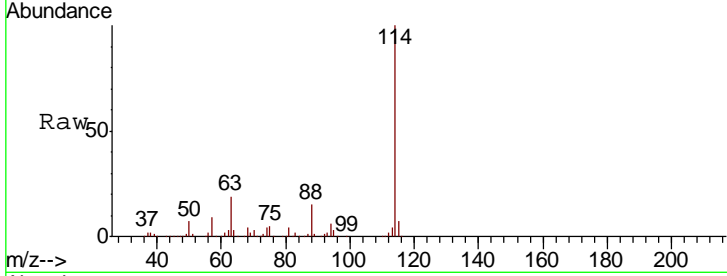
RT: 8.84 min Scan# 1138

Delta R.T. -0.25 min

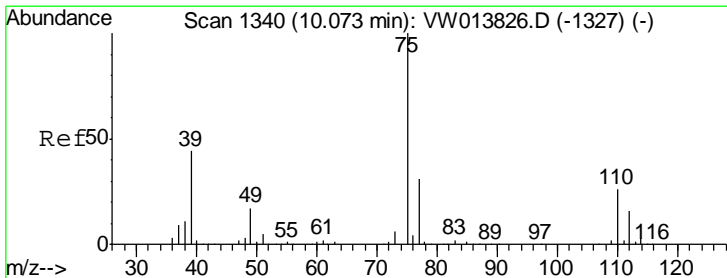
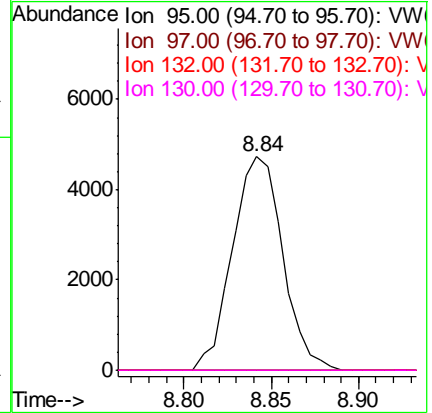
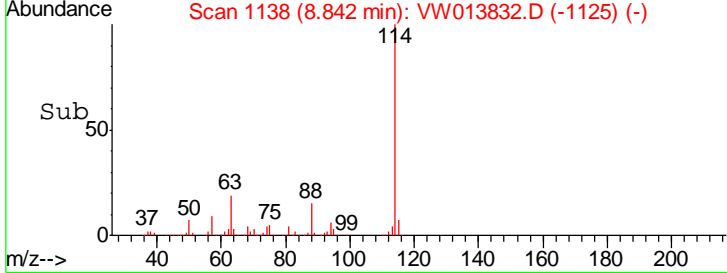
Lab File: VW013832.D

Acq: 30 Oct 2019 12:53

Instrument :  
MSVOA\_W  
ClientSampled :  
JLNA5



Tgt Ion	Resp	Lower	Upper
95	100		
97	0.0	45.8	85.2#
132	0.6	74.3	138.1#
130	0.0	76.6	142.3#



#42

cis-1,3-Dichloropropene

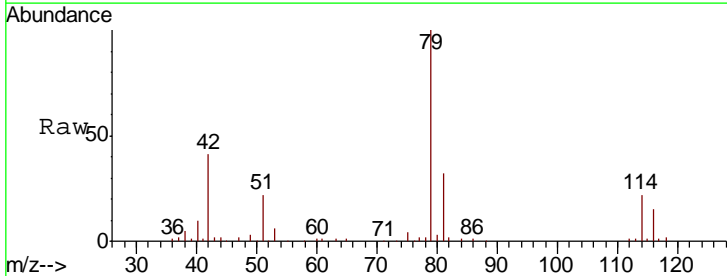
Concen: 0.416 ug/L

RT: 10.03 min Scan# 1333

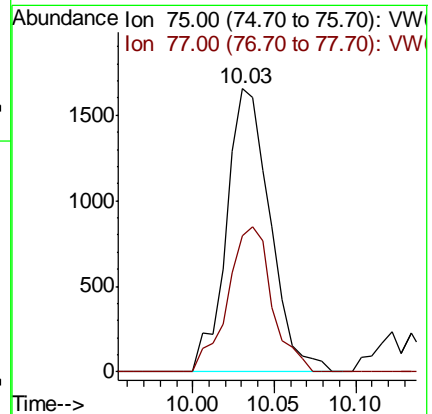
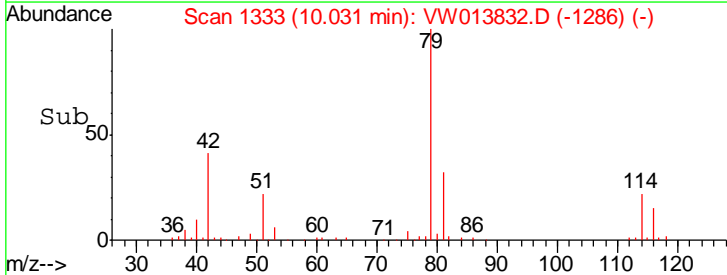
Delta R.T. -0.04 min

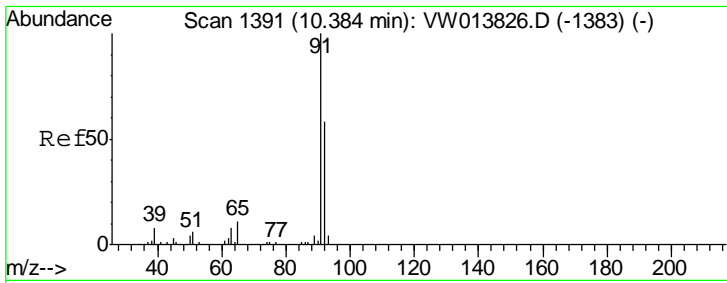
Lab File: VW013832.D

Acq: 30 Oct 2019 12:53



Tgt Ion	Resp	Lower	Upper
75	100		
77	48.3	22.5	41.9#

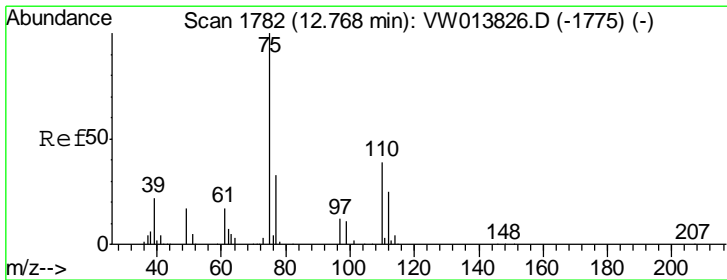
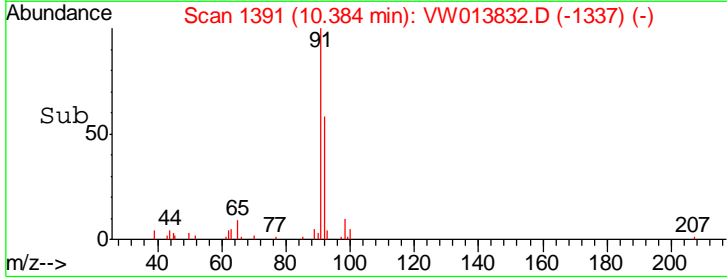
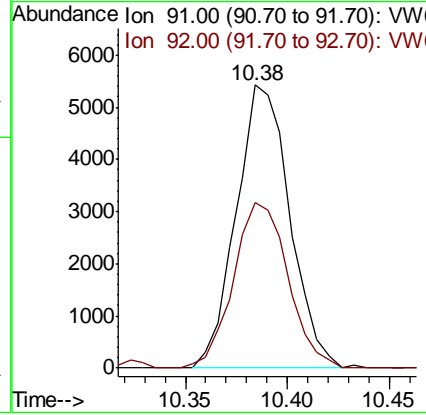
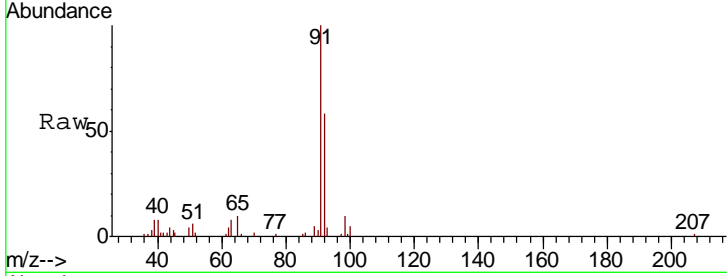




#44  
 Toluene  
 Concen: 0.480 ug/L  
 RT: 10.38 min Scan# 1391  
 Delta R.T. 0.00 min  
 Lab File: VW013832.D  
 Acq: 30 Oct 2019 12:53

Instrument :  
 MSVOA\_W  
 ClientSampled :  
 JLNA5

Tgt Ion	Resp	Lower	Upper
91	100		
92	58.3	42.0	78.0



#59  
 1,2,3-Trichloropropane  
 Concen: 3.264 ug/L  
 RT: 13.56 min Scan# 1912  
 Delta R.T. 0.79 min  
 Lab File: VW013832.D  
 Acq: 30 Oct 2019 12:53

Tgt Ion	Resp	Lower	Upper
75	100		
77	39.3	26.4	39.6

