

Data Path : Z:\VOASRV\HPCHEM1\MSVOA W\DATA\VW110418\  
 Data File : VW006618.D  
 Acq On : 02 Nov 2018 22:35  
 Operator : SY/AP  
 Sample : J5741-51  
 Misc : 7.36G/5ML/MSVOA W/SOIL  
 ALS Vial : 19 Sample Multiplier: 1

Instrument :  
 MSVOA\_W  
 ClientSampleId :  
 TP-13

Quant Time: Nov 02 23:28:25 2018  
 Quant Method : Z:\VOASRV\HPCHEM1\MSVOA\_W\METHOD\82W110218S.M  
 Quant Title : SW846 8260  
 QLast Update : Thu Nov 01 03:48:08 2018  
 Response via : Initial Calibration

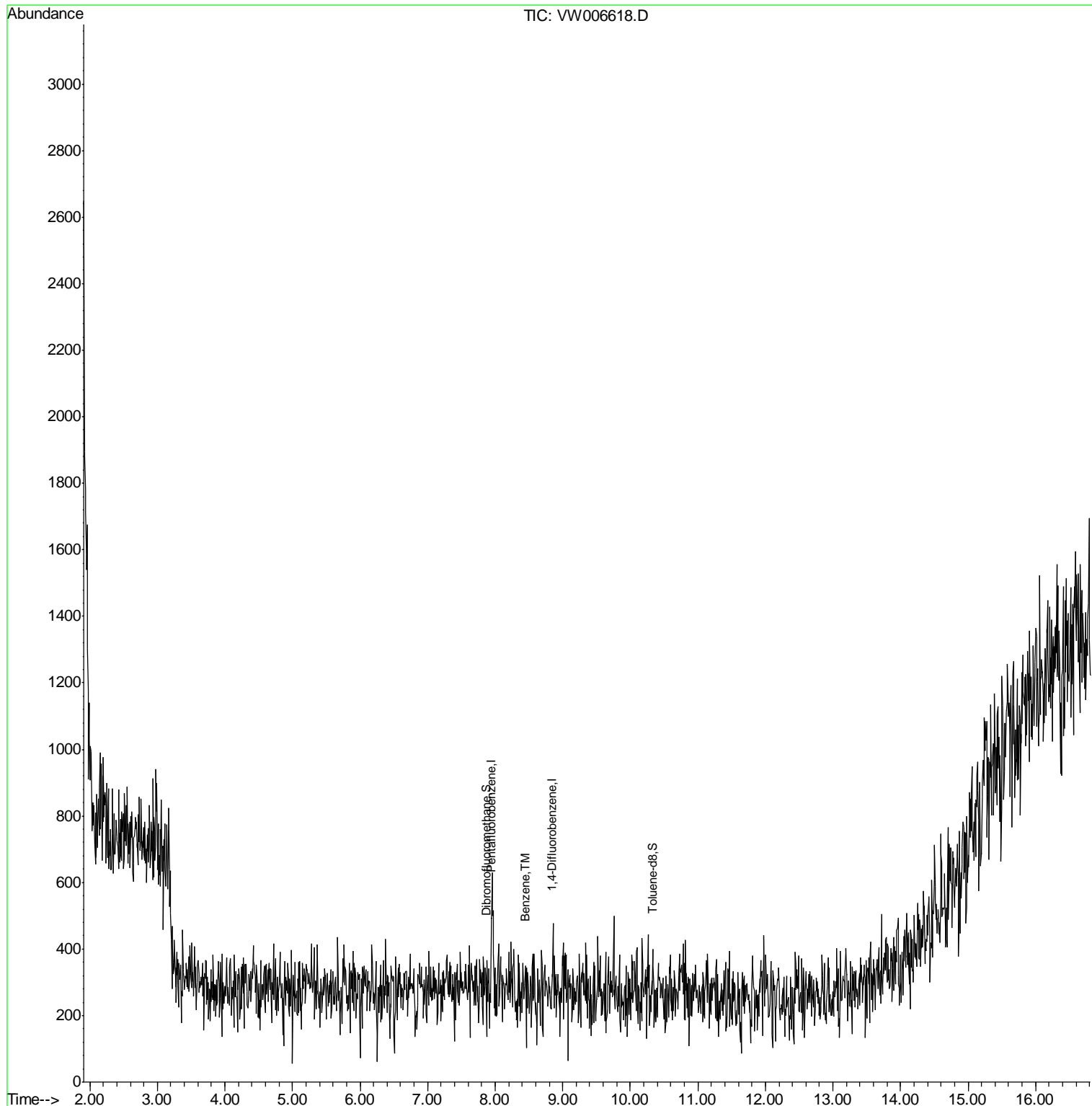
Internal Standards	R.T.	QIon	Response	Conc	Units	Dev(Min)
1) Pentafluorobenzene	7.95	168	450	50.00	ug/l	0.00
34) 1,4-Difluorobenzene	8.85	114	257	50.00	ug/l	0.00
63) Chlorobenzene-d5	0.00	117	0	0.00	ug/l	-11.63
72) 1,4-Dichlorobenzene-d4	0.00	152	0	0.00	ug/l	-13.57
System Monitoring Compounds						
33) 1,2-Dichloroethane-d4	0.00	65	0	0.00	ug/l	
Spiked Amount	50.000		Recovery	=	0.00%	
35) Dibromofluoromethane	7.88	113	20	12.40	ug/l	0.00
Spiked Amount	50.000		Recovery	=	24.80%	
50) Toluene-d8	10.34	98	65	10.59	ug/l	0.01
Spiked Amount	50.000		Recovery	=	21.18%	
62) 4-Bromofluorobenzene	0.00	95	0	0.00	ug/l	
Spiked Amount	50.000		Recovery	=	0.00%	
Target Compounds						
40) Benzene	8.46	78	20	3.116	ug/l #	51

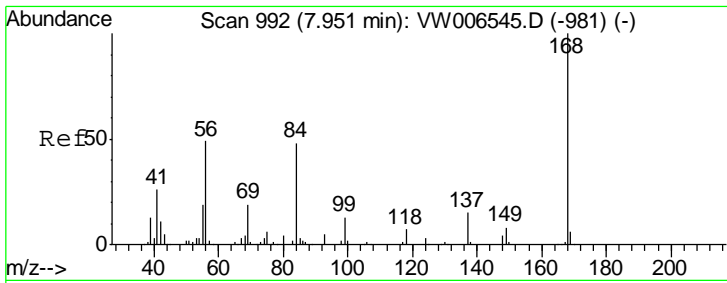
(#) = qualifier out of range (m) = manual integration (+) = signals summed

Data Path : Z:\VOASRV\HPCHEM1\MSVOA W\DATA\VW110418\  
 Data File : VW006618.D  
 Acq On : 02 Nov 2018 22:35  
 Operator : SY/AP  
 Sample : J5741-51  
 Misc : 7.36G/5ML/MSVOA W/SOIL  
 ALS Vial : 19 Sample Multiplier: 1

Instrument :  
 MSVOA\_W  
 ClientSampled :  
 TP-13

Quant Time: Nov 02 23:28:25 2018  
 Quant Method : Z:\VOASRV\HPCHEM1\MSVOA\_W\METHOD\82W110218S.M  
 Quant Title : SW846 8260  
 QLast Update : Thu Nov 01 03:48:08 2018  
 Response via : Initial Calibration

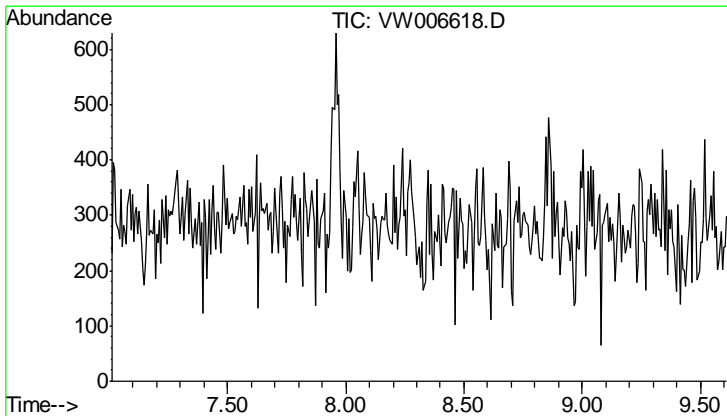
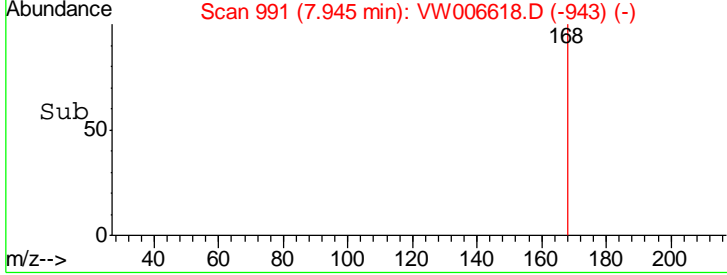
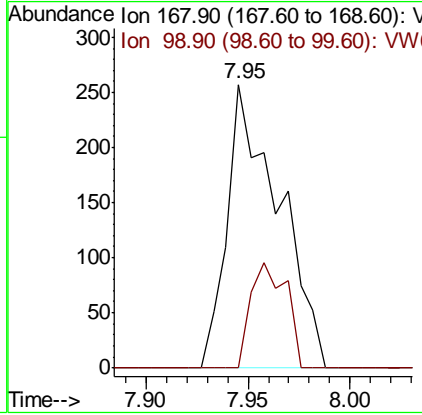
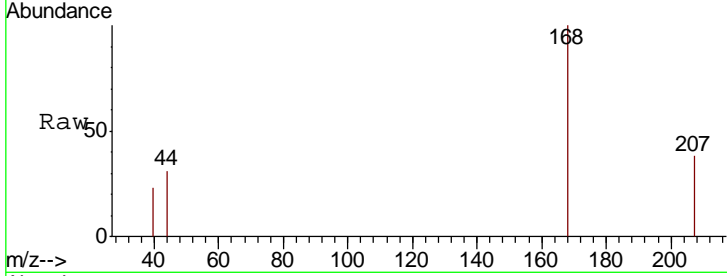




#1  
 Pentafluorobenzene  
 Concen: 50.000 ug/l  
 RT: 7.95 min Scan# 991  
 Delta R.T. -0.01 min  
 Lab File: VW006618.D  
 Acq: 02 Nov 2018 22:35

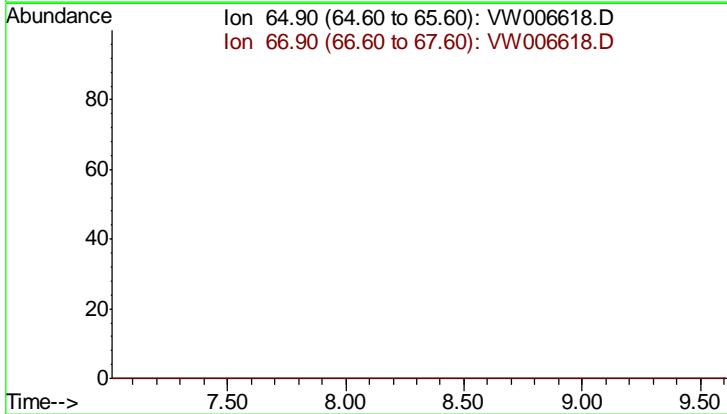
Instrument :  
 MSVOA\_W  
 ClientSampled :  
 TP-13

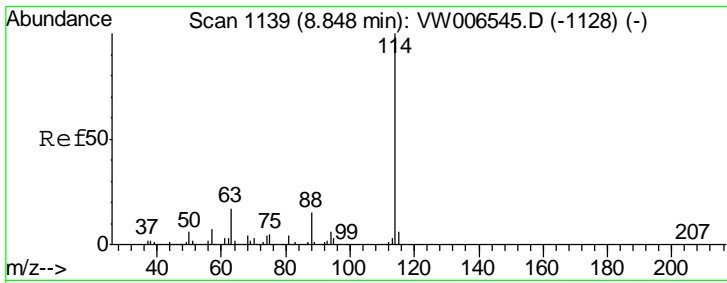
Tgt Ion: 168 Resp: 450  
 Ion Ratio Lower Upper  
 168 100  
 99 0.0 37.4 56.0#



#33  
 1,2-Dichloroethane-d4  
 Concen: 0.000 ug/l  
 Expected RT: 8.31 min  
 Lab File: VW006618.D  
 Acq: 02 Nov 2018 22:35

Tgt Ion: 65  
 Sig Exp Ratio  
 65 100  
 67 52.2

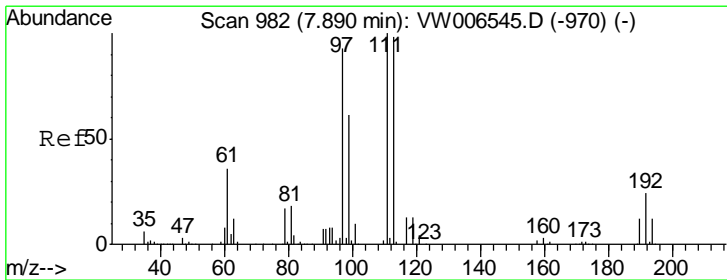
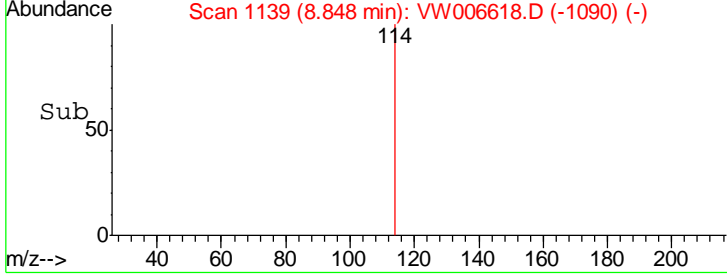
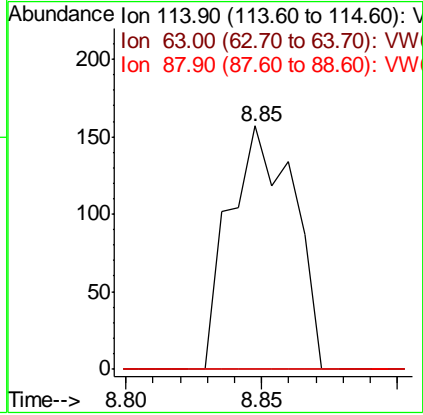
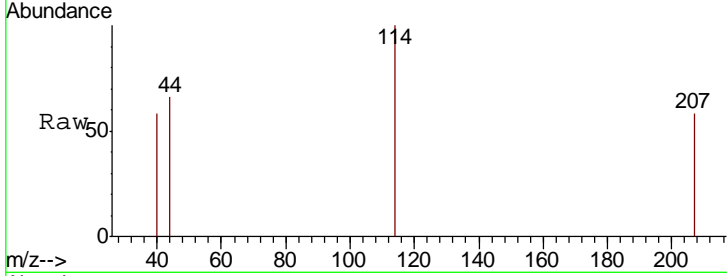




#34  
 1,4-Difluorobenzene  
 Concen: 50.000 ug/l  
 RT: 8.85 min Scan# 1139  
 Delta R.T. -0.00 min  
 Lab File: VW006618.D  
 Acq: 02 Nov 2018 22:35

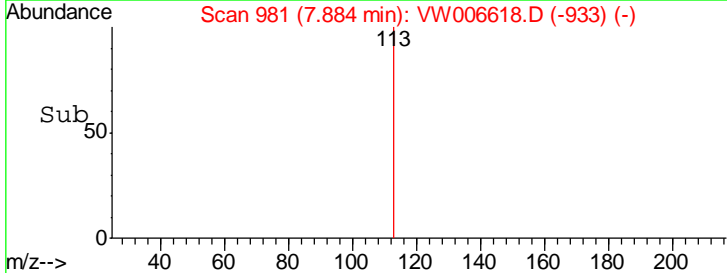
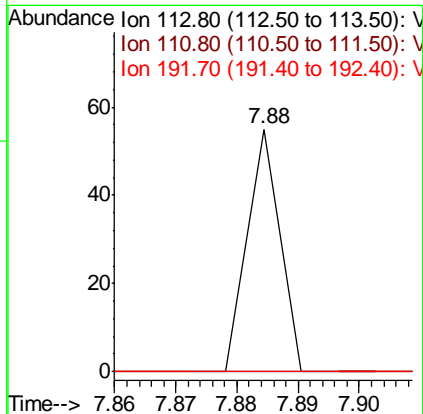
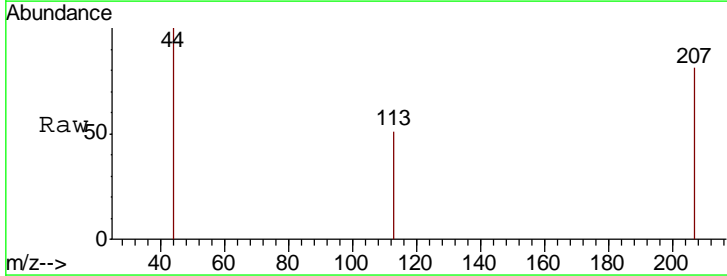
Instrument : MSVOA\_W  
 ClientSampled : TP-13

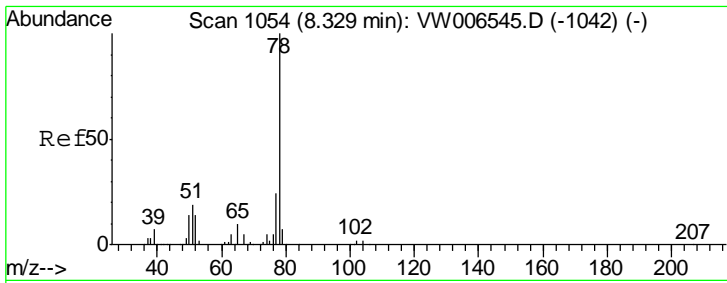
Tgt Ion	Ratio	Lower	Upper
114	100		
63	0.0	0.0	34.4
88	0.0	0.0	29.0



#35  
 Dibromofluoromethane  
 Concen: 12.400 ug/l  
 RT: 7.88 min Scan# 981  
 Delta R.T. -0.01 min  
 Lab File: VW006618.D  
 Acq: 02 Nov 2018 22:35

Tgt Ion	Ratio	Lower	Upper
113	100		
111	0.0	82.2	123.2#
192	0.0	19.0	28.6#

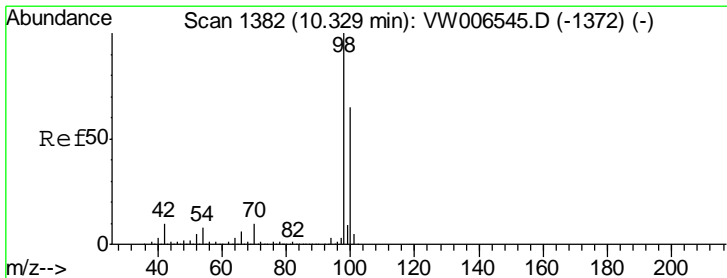
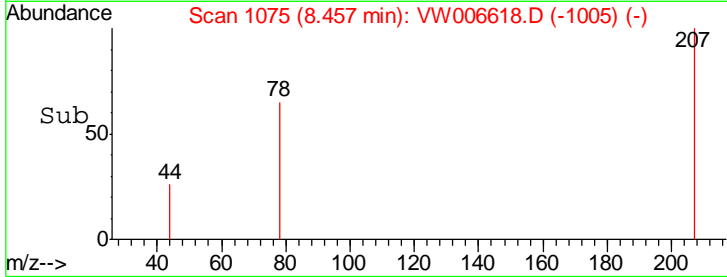
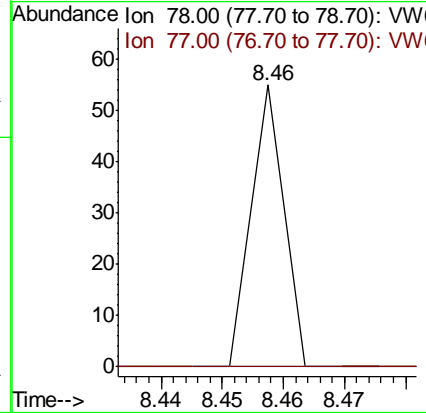
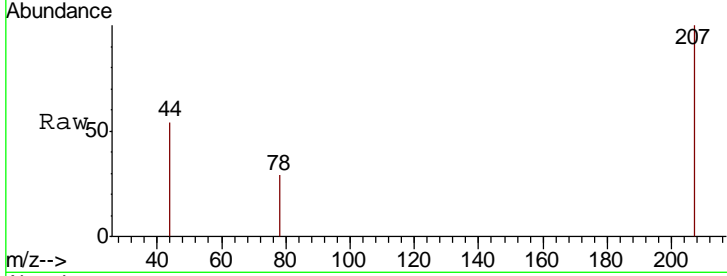




#40  
Benzene  
Concen: 3.116 ug/l  
RT: 8.46 min Scan# 1075  
Delta R.T. 0.13 min  
Lab File: VW006618.D  
Acq: 02 Nov 2018 22:35

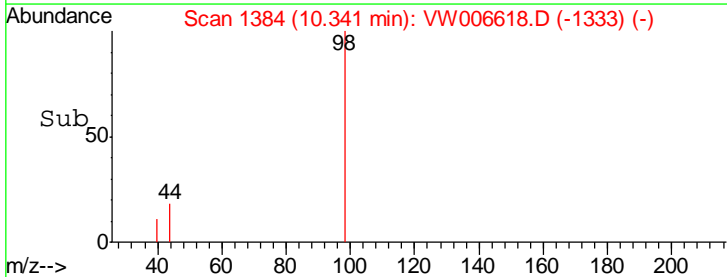
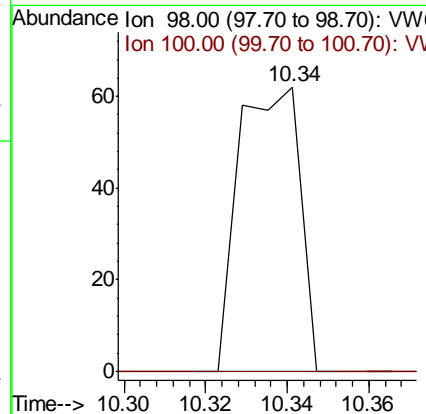
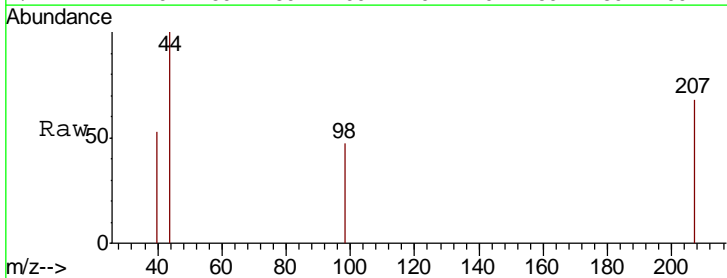
Instrument :  
MSVOA\_W  
ClientSampled :  
TP-13

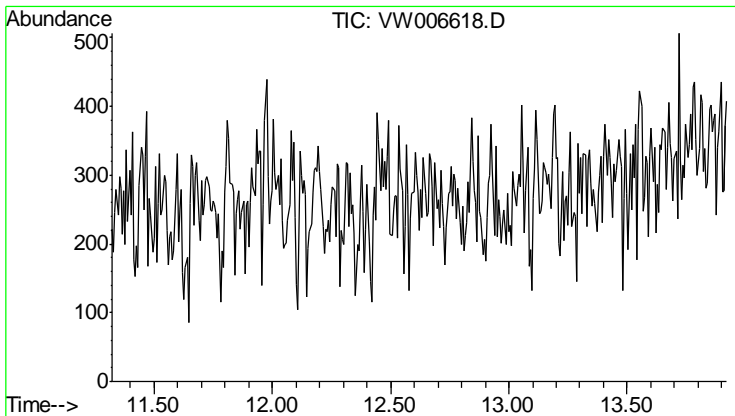
Tgt Ion: 78 Resp: 20  
Ion Ratio Lower Upper  
78 100  
77 0.0 19.2 28.8#



#50  
Toluene-d8  
Concen: 10.586 ug/l  
RT: 10.34 min Scan# 1384  
Delta R.T. 0.01 min  
Lab File: VW006618.D  
Acq: 02 Nov 2018 22:35

Tgt Ion: 98 Resp: 65  
Ion Ratio Lower Upper  
98 100  
100 0.0 51.6 77.4#

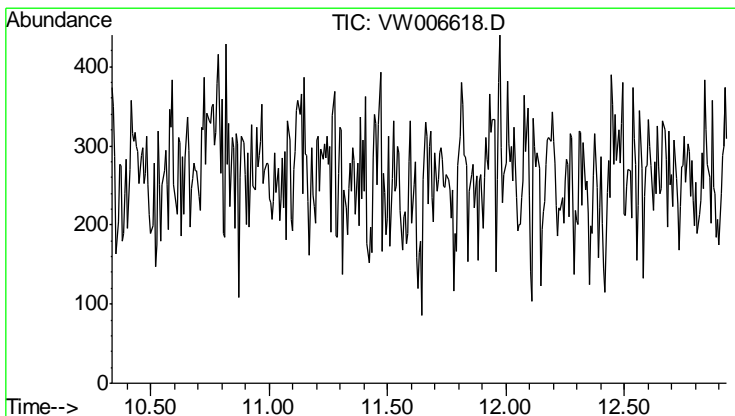
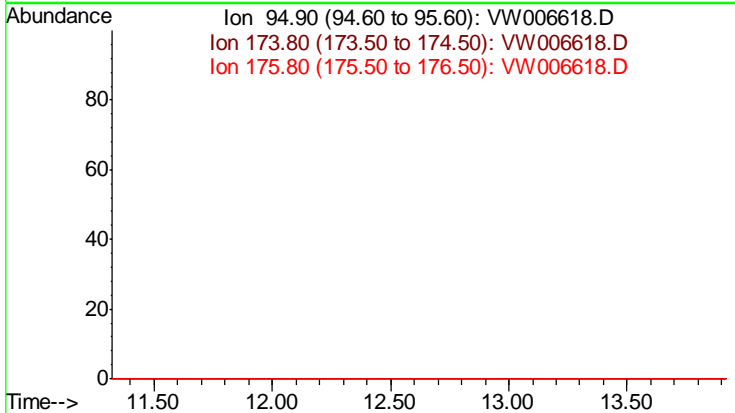




#62  
 4-Bromofluorobenzene  
 Concen: 0.000 ug/l  
 Expected RT: 12.62 min  
 Lab File: VW006618.D  
 Acq: 02 Nov 2018 22:35

Instrument : MSVOA\_W  
 ClientSampled : TP-13

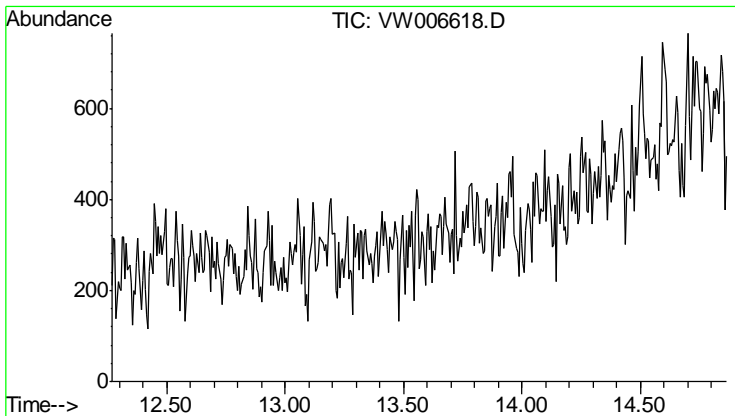
Tgt Ion	Exp Ratio
95	100
174	96.2
176	93.7



#63  
 Chlorobenzene-d5  
 Concen: 0.000 ug/l  
 Expected RT: 11.63 min  
 Lab File: VW006618.D  
 Acq: 02 Nov 2018 22:35

Tgt Ion	Exp Ratio
117	100
82	51.0
119	32.6





#72  
 1,4-Dichlorobenzene-d4  
 Concen: 0.000 ug/l  
 Expected RT: 13.57 min  
 Lab File: VW006618.D  
 Acq: 02 Nov 2018 22:35

**Instrument :**  
 MSVOA\_W  
**ClientSampled :**  
 TP-13

Tot Ion:	152
Sig	Exp Ratio
152	100
115	53.2
150	172.3

