

Data Path : Z:\VOASRV\HPCHEM1\MSVOA W\DATA\VW110518\  
 Data File : VW006674.D  
 Acq On : 06 Nov 2018 09:22  
 Operator : SY/AP  
 Sample : J5812-13  
 Misc : 6.28G/5ML/MSVOA W/SOIL  
 ALS Vial : 54 Sample Multiplier: 1

Instrument :  
 MSVOA\_W  
 ClientSampleId :  
 TP2-B

Integration Parameters: RTEINT.P  
 Integrator: RTE  
 Smoothing : ON Filtering: 5  
 Sampling : 1 Min Area: 3 % of largest Peak  
 Start Thrs: 0.2 Max Peaks: 100  
 Stop Thrs : 0 Peak Location: TOP

If leading or trailing edge < 100 prefer < Baseline drop else tangent >  
 Peak separation: 5

Method : Z:\VOASRV\HPCHEM1\MSVOA\_W\METHOD\82W110218S.M  
 Title : SW846 8260

Signal : TIC

peak #	R.T. min	first scan	max scan	last scan	PK TY	peak height	corr. area	corr. % max.	% of total
1	4.141	357	367	378	rBV	5704	17409	2.29%	0.386%
2	4.909	481	493	508	rBV2	12715	41857	5.49%	0.927%
3	7.153	853	861	876	rBV	5414	16933	2.22%	0.375%
4	7.884	971	981	986	rBV2	124657	289984	38.07%	6.424%
5	7.951	986	992	1002	rVB	211179	466231	61.21%	10.329%
6	8.311	1041	1051	1061	rBV	110759	245949	32.29%	5.449%
7	8.841	1129	1138	1149	rBV	304826	607381	79.74%	13.456%
8	10.329	1372	1382	1389	rBV	429590	761732	100.00%	16.876%
9	11.634	1586	1596	1605	rBV	453147	754577	99.06%	16.717%
10	12.621	1751	1758	1767	rBV	335001	540547	70.96%	11.976%
11	13.566	1904	1913	1921	rBV	445709	739730	97.11%	16.388%
12	14.078	1990	1997	2003	rBV	5466	9102	1.19%	0.202%
13	14.993	2136	2147	2155	rBV4	6158	22328	2.93%	0.495%

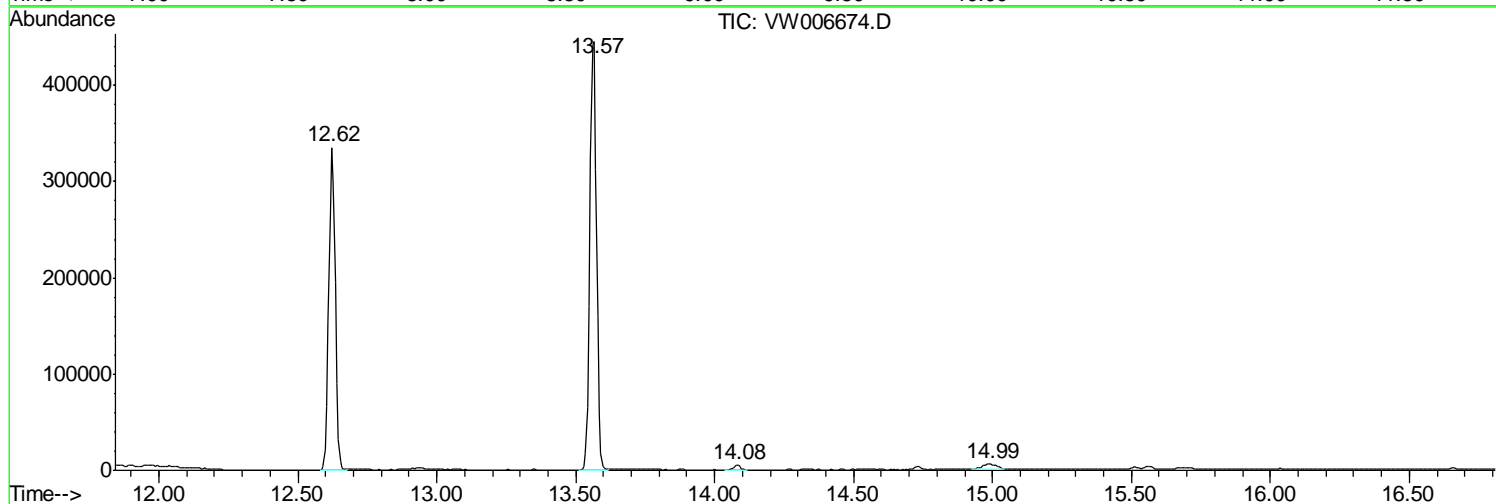
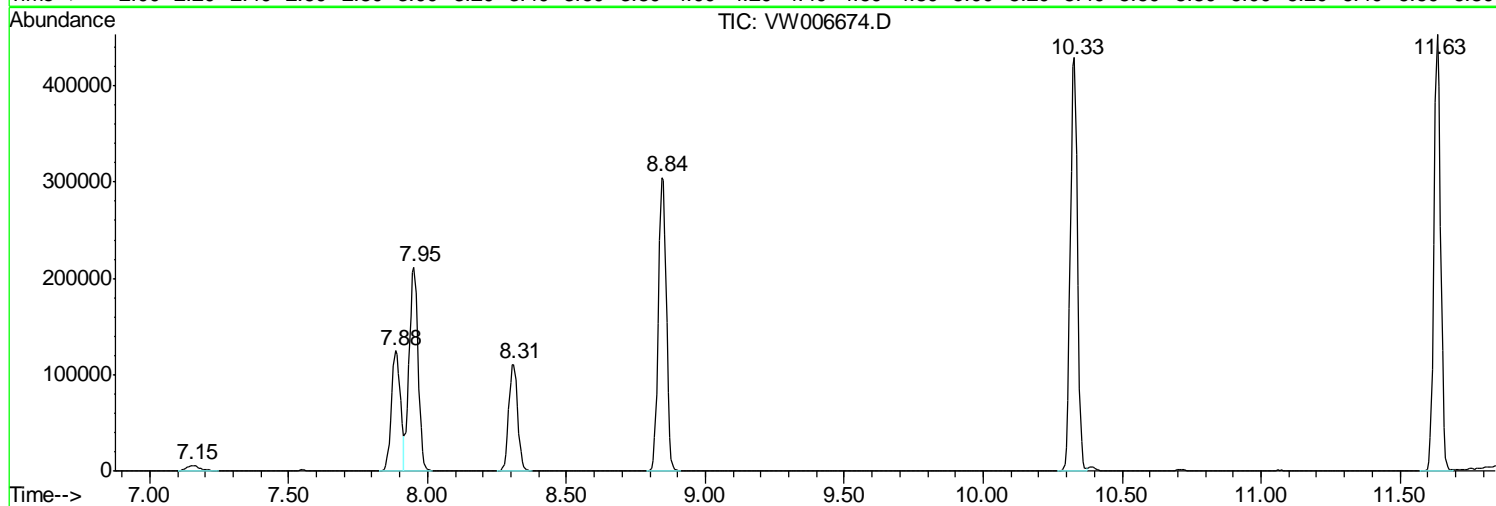
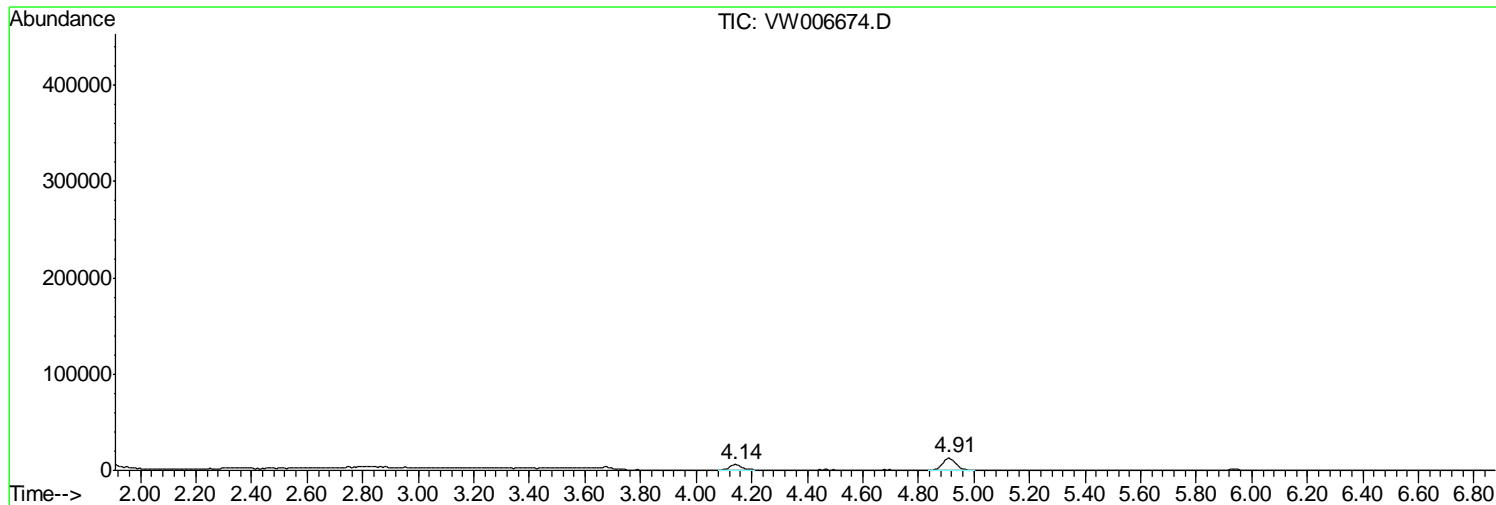
Sum of corrected areas: 4513760

Data Path : Z:\VOASRV\HPCHEM1\MSVOA W\DATA\VW110518\  
Data File : VW006674.D  
Acq On : 06 Nov 2018 09:22  
Operator : SY/AP  
Sample : J5812-13  
Misc : 6.28G/5ML/MSVOA W/SOIL  
ALS Vial : 54 Sample Multiplier: 1

Instrument :  
MSVOA\_W  
ClientSampled :  
TP2-B

Quant Method : Z:\VOASRV\HPCHEM1\MSVOA\_W\METHOD\82W110218S.M  
Quant Title : SW846 8260

TIC Library : C:\DATABASE\NIST11.L  
TIC Integration Parameters: LSCINT.P



Data Path : Z:\VOASRV\HPCHEM1\MSVOA\_W\DATA\VW110518\  
Data File : VW006674.D  
Acq On : 06 Nov 2018 09:22  
Operator : SY/AP  
Sample : J5812-13  
Misc : 6.28G/5ML/MSVOA\_W/SOIL  
ALS Vial : 54 Sample Multiplier: 1

**Instrument :**  
MSVOA\_W  
**ClientSampleId :**  
TP2-B

Quant Method : Z:\VOASRV\HPCHEM1\MSVOA\_W\METHOD\82W110218S.M  
Quant Title : SW846 8260

TIC Library : C:\DATABASE\NIST11.L  
TIC Integration Parameters: LSCINT.P

No Library Search Compounds Detected

\*\*\*\*\*

Data Path : Z:\VOASRV\HPCHEM1\MSVOA\_W\DATA\VW110518\  
Data File : VW006674.D  
Acq On : 06 Nov 2018 09:22  
Operator : SY/AP  
Sample : J5812-13  
Misc : 6.28G/5ML/MSVOA\_W/SOIL  
ALS Vial : 54 Sample Multiplier: 1

Instrument :  
MSVOA\_W  
ClientSampleId :  
TP2-B

Quant Method : Z:\VOASRV\HPCHEM1\MSVOA\_W\METHOD\82W110218S.M  
Quant Title : SW846 8260

TIC Library : C:\DATABASE\NIST11.L  
TIC Integration Parameters: LSCINT.P

TIC Top Hit name	RT	EstConc	Units	Response	--Internal Standard--			
					#	RT	Resp	Conc

---