

Data Path : Z:\VOASRV\HPCHEM1\MSVOA W\DATA\VW110618\  
 Data File : VW006724.D  
 Acq On : 07 Nov 2018 09:22  
 Operator : SY/AP  
 Sample : J5827-11  
 Misc : 5.27G/5ML/MSVOA W/SOIL  
 ALS Vial : 51 Sample Multiplier: 1

Instrument :  
 MSVOA\_W  
 ClientSampleId :  
 SP-B

Integration Parameters: RTEINT.P  
 Integrator: RTE  
 Smoothing : ON Filtering: 5  
 Sampling : 1 Min Area: 3 % of largest Peak  
 Start Thrs: 0.2 Max Peaks: 100  
 Stop Thrs : 0 Peak Location: TOP

If leading or trailing edge < 100 prefer < Baseline drop else tangent >  
 Peak separation: 5

Method : Z:\VOASRV\HPCHEM1\MSVOA\_W\METHOD\82W110218S.M  
 Title : SW846 8260

Signal : TIC

peak #	R.T. min	first scan	max scan	last scan	PK TY	peak height	corr. area	corr. % max.	% of total
1	4.135	357	366	373	rBV2	3662	10476	1.10%	0.185%
2	4.909	481	493	508	rBV4	16826	58644	6.15%	1.034%
3	7.153	852	861	872	rBV2	4108	12307	1.29%	0.217%
4	7.885	971	981	986	rBV	155946	367381	38.52%	6.475%
5	7.952	986	992	1003	rVB	314080	679283	71.23%	11.973%
6	8.311	1042	1051	1064	rVB	144707	321338	33.69%	5.664%
7	8.848	1130	1139	1149	rBV	444226	877230	91.98%	15.462%
8	10.329	1374	1382	1389	rBV	539844	953707	100.00%	16.810%
9	11.634	1587	1596	1606	rBV	553488	915283	95.97%	16.132%
10	12.621	1751	1758	1768	rVB	405794	650643	68.22%	11.468%
11	13.566	1905	1913	1923	rVB	502854	827268	86.74%	14.581%

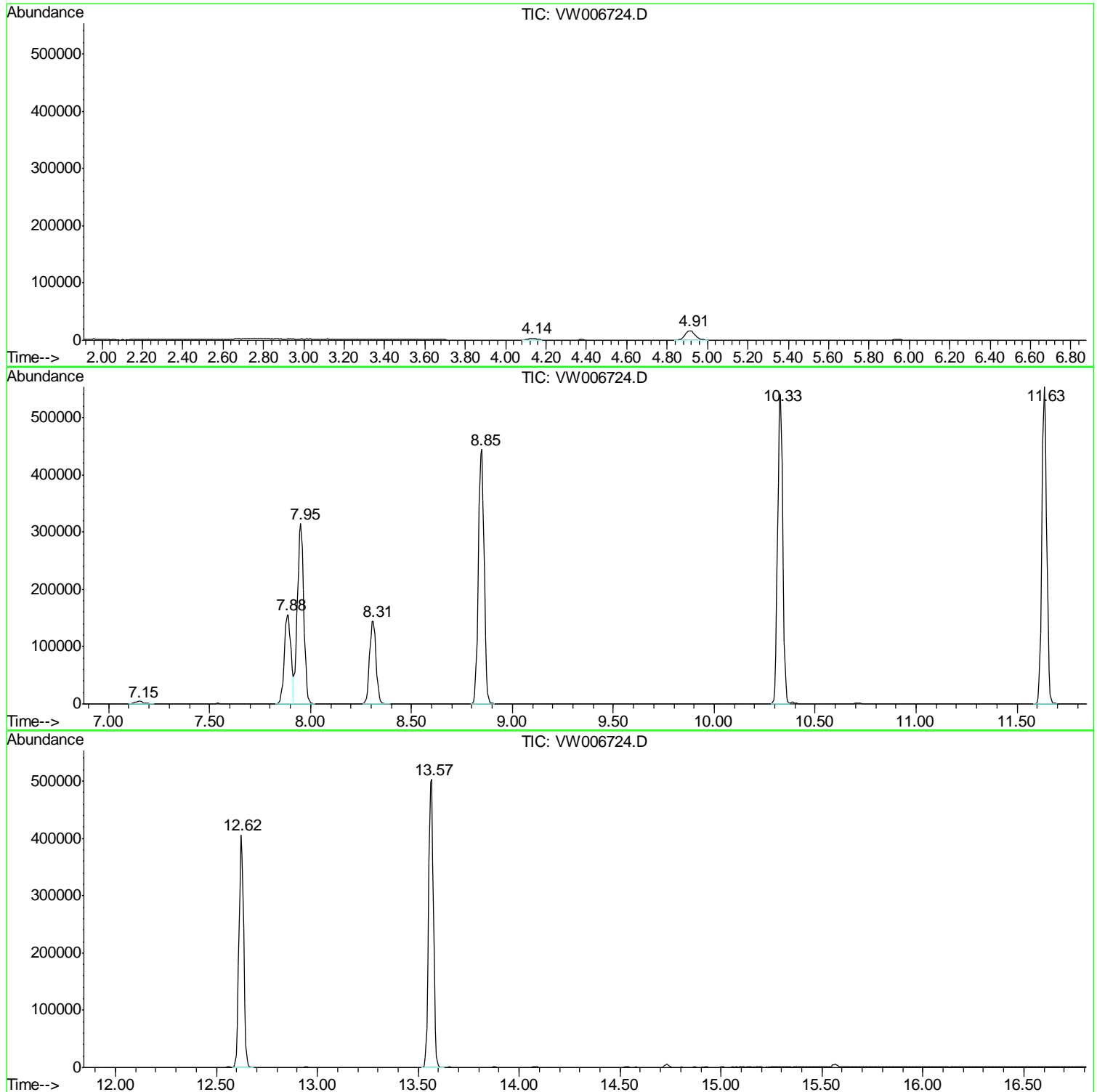
Sum of corrected areas: 5673560

Data Path : Z:\VOASRV\HPCHEM1\MSVOA W\DATA\VW110618\  
Data File : VW006724.D  
Acq On : 07 Nov 2018 09:22  
Operator : SY/AP  
Sample : J5827-11  
Misc : 5.27G/5ML/MSVOA W/SOIL  
ALS Vial : 51 Sample Multiplier: 1

Instrument :  
MSVOA\_W  
ClientSampleId :  
SP-B

Quant Method : Z:\VOASRV\HPCHEM1\MSVOA\_W\METHOD\82W110218S.M  
Quant Title : SW846 8260

TIC Library : C:\DATABASE\NIST11.L  
TIC Integration Parameters: LSCINT.P



Data Path : Z:\VOASRV\HPCHEM1\MSVOA\_W\DATA\VW110618\  
Data File : VW006724.D  
Acq On : 07 Nov 2018 09:22  
Operator : SY/AP  
Sample : J5827-11  
Misc : 5.27G/5ML/MSVOA\_W/SOIL  
ALS Vial : 51 Sample Multiplier: 1

Instrument :  
MSVOA\_W  
ClientSampleId :  
SP-B

Quant Method : Z:\VOASRV\HPCHEM1\MSVOA\_W\METHOD\82W110218S.M  
Quant Title : SW846 8260

TIC Library : C:\DATABASE\NIST11.L  
TIC Integration Parameters: LSCINT.P

No Library Search Compounds Detected

\*\*\*\*\*

Data Path : Z:\VOASRV\HPCHEM1\MSVOA\_W\DATA\VW110618\  
Data File : VW006724.D  
Acq On : 07 Nov 2018 09:22  
Operator : SY/AP  
Sample : J5827-11  
Misc : 5.27G/5ML/MSVOA\_W/SOIL  
ALS Vial : 51 Sample Multiplier: 1

Instrument :  
MSVOA\_W  
ClientSampleId :  
SP-B

Quant Method : Z:\VOASRV\HPCHEM1\MSVOA\_W\METHOD\82W110218S.M  
Quant Title : SW846 8260

TIC Library : C:\DATABASE\NIST11.L  
TIC Integration Parameters: LSCINT.P

TIC Top Hit name	RT	EstConc	Units	Response	--Internal Standard--			
					#	RT	Resp	Conc

---