

Data Path : Z:\voasrv\HPCHEM1\MSVOA_W\Data\VW110624\
 Data File : VW030944.D
 Acq On : 06 Nov 2024 16:30
 Operator : SY/MD
 Sample : P4724-04
 Misc : 5.52g/10mL/MSVOA_W/SOIL/A
 ALS Vial : 8 Sample Multiplier: 1

Instrument :
 MSVOA_W
 ClientSampleId :

Quant Time: Nov 07 03:59:34 2024
 Quant Method : Z:\voasrv\HPCHEM1\MSVOA_W\Method\SFAMWLM110424SMA.M
 Quant Title : SFAM01.0
 QLast Update : Thu Nov 07 03:58:00 2024
 Response via : Initial Calibration

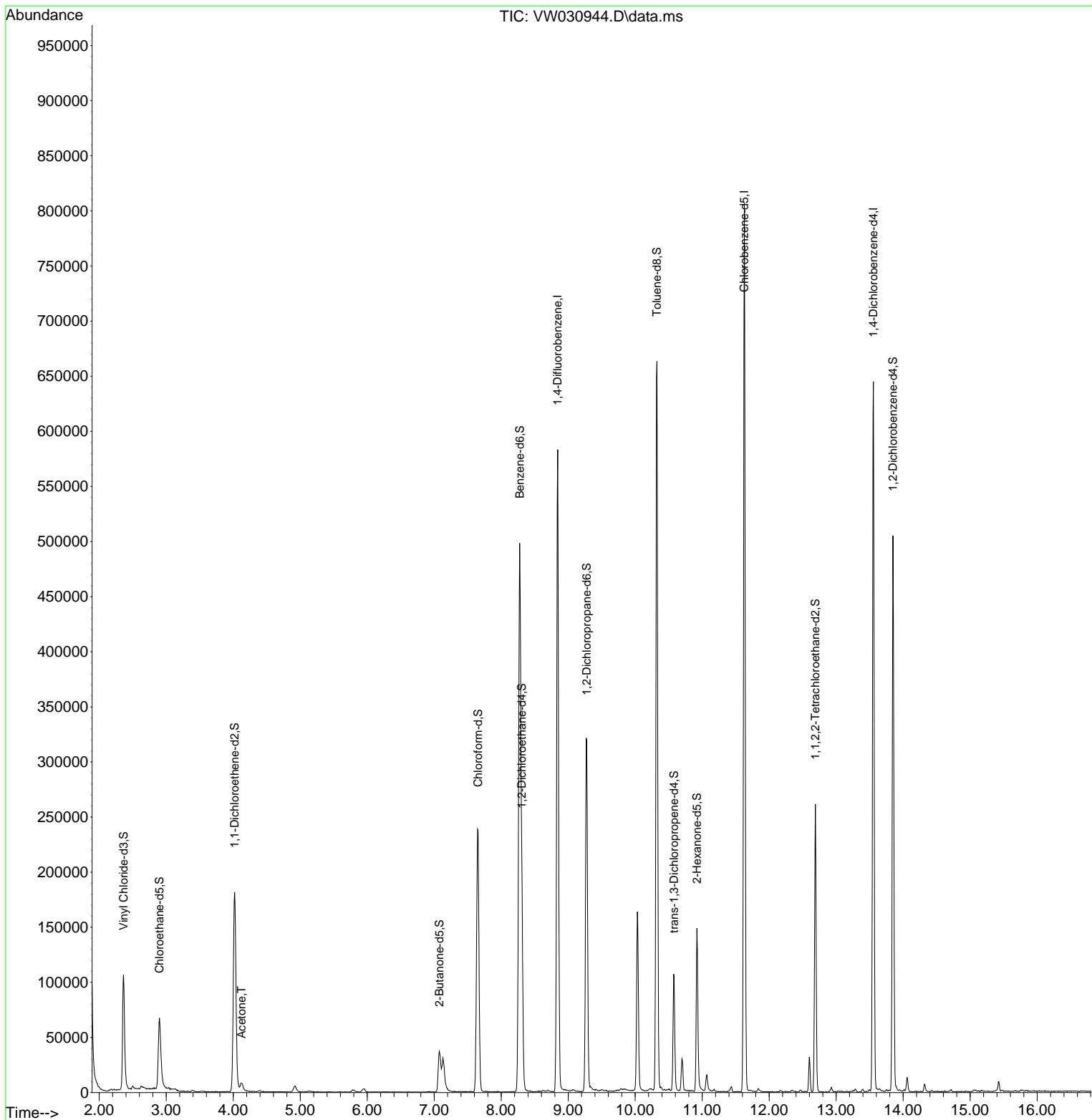
Compound	R.T.	QIon	Response	Conc	Units	Dev(Min)
Internal Standards						
1) 1,4-Difluorobenzene	8.843	114	482153	25.000	ug/L	0.00
28) Chlorobenzene-d5	11.629	117	442231	25.000	ug/L	0.00
58) 1,4-Dichlorobenzene-d4	13.556	152	173491	25.000	ug/L	0.00
System Monitoring Compounds						
4) Vinyl Chloride-d3	2.363	65	136212	17.225	ug/L	0.00
Spiked Amount	25.000	Range 30 - 150	Recovery =	68.920%		
7) Chloroethane-d5	2.899	69	99918	16.475	ug/L	0.00
Spiked Amount	25.000	Range 30 - 150	Recovery =	65.880%		
11) 1,1-Dichloroethene-d2	4.021	65	58585	17.955	ug/L	0.00
Spiked Amount	25.000	Range 45 - 110	Recovery =	71.800%		
21) 2-Butanone-d5	7.075	46	63066	48.463	ug/L	0.00
Spiked Amount	50.000	Range 20 - 135	Recovery =	96.920%		
24) Chloroform-d	7.654	84	255867	18.001	ug/L	0.00
Spiked Amount	25.000	Range 40 - 150	Recovery =	72.000%		
26) 1,2-Dichloroethane-d4	8.307	65	141870	20.074	ug/L	0.00
Spiked Amount	25.000	Range 70 - 130	Recovery =	80.280%		
32) Benzene-d6	8.276	84	510800	18.592	ug/L	0.00
Spiked Amount	25.000	Range 20 - 135	Recovery =	74.360%		
36) 1,2-Dichloropropane-d6	9.276	67	156768	19.356	ug/L	0.00
Spiked Amount	25.000	Range 70 - 120	Recovery =	77.440%		
41) Toluene-d8	10.325	98	452370	18.357	ug/L	0.00
Spiked Amount	25.000	Range 30 - 130	Recovery =	73.440%		
43) trans-1,3-Dichloroprop...	10.581	79	62212	18.950	ug/L	0.00
Spiked Amount	25.000	Range 30 - 135	Recovery =	75.800%		
47) 2-Hexanone-d5	10.922	63	48600	46.302	ug/L	0.00
Spiked Amount	50.000	Range 20 - 135	Recovery =	92.600%		
56) 1,1,2,2-Tetrachloroeth...	12.690	84	126835	22.478	ug/L	0.00
Spiked Amount	25.000	Range 45 - 120	Recovery =	89.920%		
66) 1,2-Dichlorobenzene-d4	13.848	152	134343	21.258	ug/L	0.00
Spiked Amount	25.000	Range 75 - 120	Recovery =	85.040%		
Target Compounds						
13) Acetone	4.125	43	12298	7.738	ug/L	97

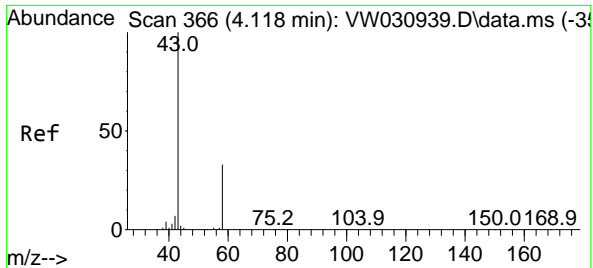
(#) = qualifier out of range (m) = manual integration (+) = signals summed

Data Path : Z:\voasrv\HPCHEM1\MSVOA_W\Data\VW110624\
 Data File : VW030944.D
 Acq On : 06 Nov 2024 16:30
 Operator : SY/MD
 Sample : P4724-04
 Misc : 5.52g/10mL/MSVOA_W/SOIL/A
 ALS Vial : 8 Sample Multiplier: 1

Instrument :
 MSVOA_W
 ClientSampleId :

Quant Time: Nov 07 03:59:34 2024
 Quant Method : Z:\voasrv\HPCHEM1\MSVOA_W\Method\SFAMWLM110424SMA.M
 Quant Title : SFAM01.0
 QLast Update : Thu Nov 07 03:58:00 2024
 Response via : Initial Calibration





#13
 Acetone
 Concen: 7.738 ug/L
 RT: 4.125 min Scan# 30
 Delta R.T. 0.006 min
 Lab File: VW030944.D
 Acq: 06 Nov 2024 16:30

Instrument :
 MSVOA_W
 ClientSampleId :

Tgt Ion: 43 Resp: 12298
 Ion Ratio Lower Upper
 43 100
 58 29.4 0.0 62.6

