

Data Path : Z:\VOASRV\HPCHEM1\MSVOA W\DATA\VW110818\  
 Data File : VW006773.D  
 Acq On : 08 Nov 2018 18:23  
 Operator : SY/AP  
 Sample : J5745-07RE  
 Misc : 5.06G/5ML/MSVOA W/SOIL  
 ALS Vial : 16 Sample Multiplier: 1

Instrument :  
 MSVOA\_W  
 ClientSampleId :  
 6ARE

Quant Time: Nov 09 11:15:11 2018  
 Quant Method : Z:\VOASRV\HPCHEM1\MSVOA\_W\METHOD\82W110218S.M  
 Quant Title : SW846 8260  
 QLast Update : Thu Nov 01 03:48:08 2018  
 Response via : Initial Calibration

Internal Standards	R.T.	QIon	Response	Conc	Units	Dev(Min)
1) Pentafluorobenzene	7.95	168	40754	50.00	ug/l	0.00
34) 1,4-Difluorobenzene	8.85	114	55361	50.00	ug/l	0.00
63) Chlorobenzene-d5	11.63	117	50071	50.00	ug/l	0.00
72) 1,4-Dichlorobenzene-d4	13.57	152	22131	50.00	ug/l	0.00

System Monitoring Compounds

33) 1,2-Dichloroethane-d4	8.31	65	15701	44.82	ug/l	0.00
Spiked Amount	50.000		Recovery	= 89.64%		
35) Dibromofluoromethane	7.89	113	14684	42.26	ug/l	0.00
Spiked Amount	50.000		Recovery	= 84.52%		
50) Toluene-d8	10.33	98	41770	31.58	ug/l	0.00
Spiked Amount	50.000		Recovery	= 63.16%		
62) 4-Bromofluorobenzene	12.62	95	13104	27.33	ug/l	0.00
Spiked Amount	50.000		Recovery	= 54.66%		

Target Compounds

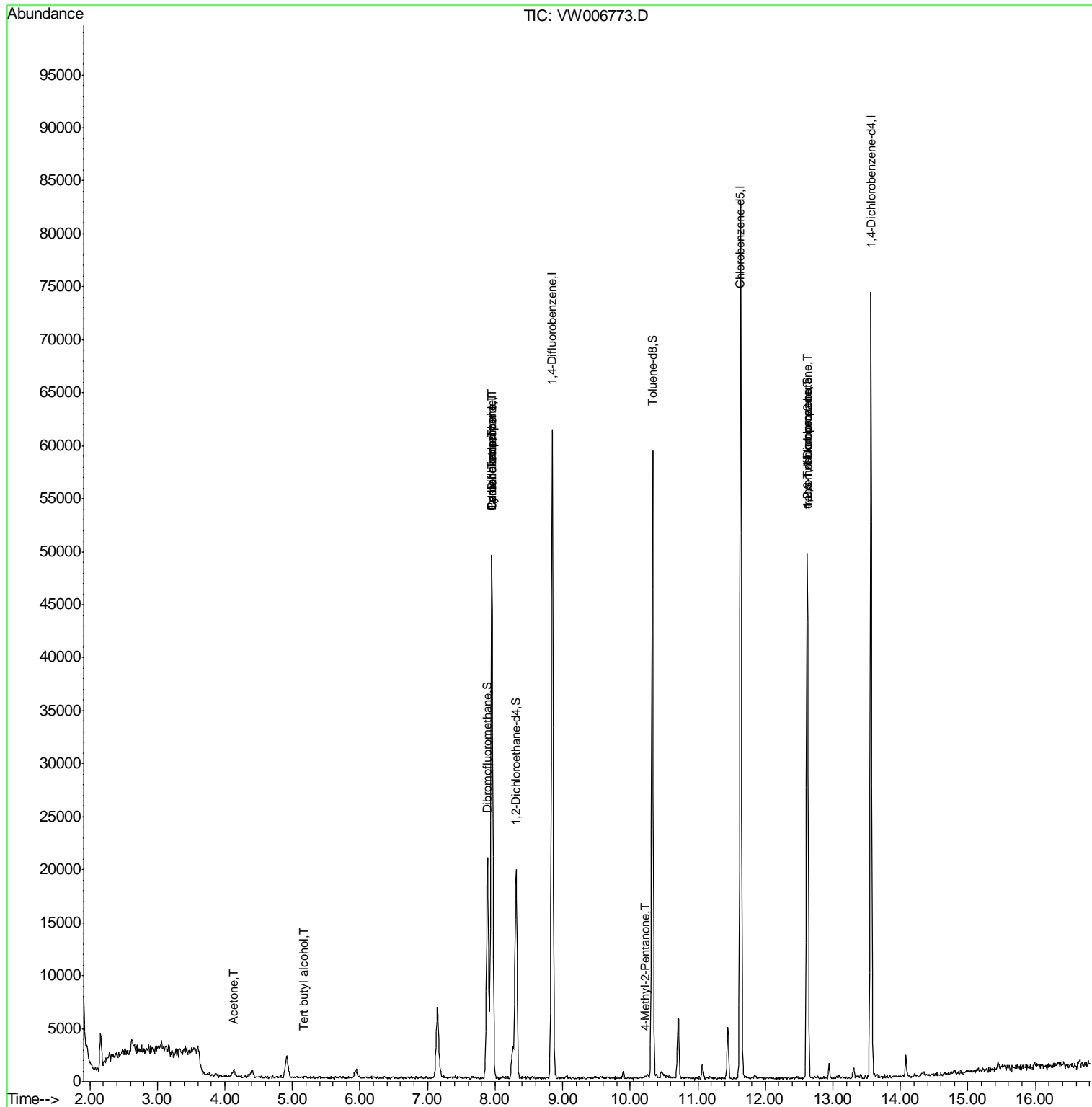
	R.T.	QIon	Response	Conc	Units	Qvalue
11) Tert butyl alcohol	5.18	59	117	6.199	ug/l #	84
16) Acetone	4.14	43	1150	20.333	ug/l #	82
20) Methylene Chloride	4.92	84	1651	Below Cal		93
31) Cyclohexane	7.95	56	701	1.256	ug/l #	56
36) 1,1-Dichloropropene	7.95	75	2585	5.310	ug/l #	46
38) Carbon Tetrachloride	7.95	117	3478	6.837	ug/l #	17
51) 4-Methyl-2-Pentanone	10.22	43	324	1.874	ug/l #	52
76) 1,2,3-Trichloropropane	12.62	75	6645	38.483	ug/l #	100
81) trans-1,4-Dichloro-2-buten	12.62	75	6645	97.018	ug/l #	11

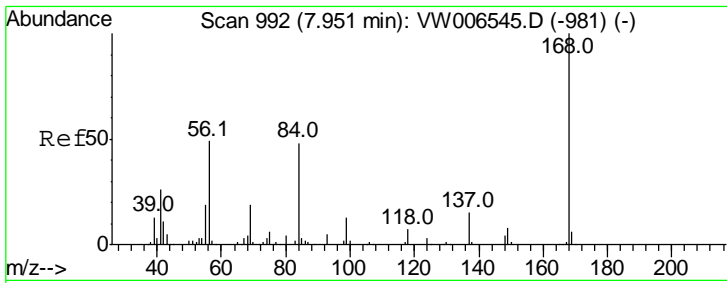
(#) = qualifier out of range (m) = manual integration (+) = signals summed

Data Path : Z:\VOASRV\HPCHEM1\MSVOA W\DATA\VW110818\  
 Data File : VW006773.D  
 Acq On : 08 Nov 2018 18:23  
 Operator : SY/AP  
 Sample : J5745-07RE  
 Misc : 5.06G/5ML/MSVOA W/SOIL  
 ALS Vial : 16 Sample Multiplier: 1

Instrument :  
 MSVOA\_W  
 ClientSampled :  
 6ARE

Quant Time: Nov 09 11:15:11 2018  
 Quant Method : Z:\VOASRV\HPCHEM1\MSVOA\_W\METHOD\82W110218S.M  
 Quant Title : SW846 8260  
 QLast Update : Thu Nov 01 03:48:08 2018  
 Response via : Initial Calibration

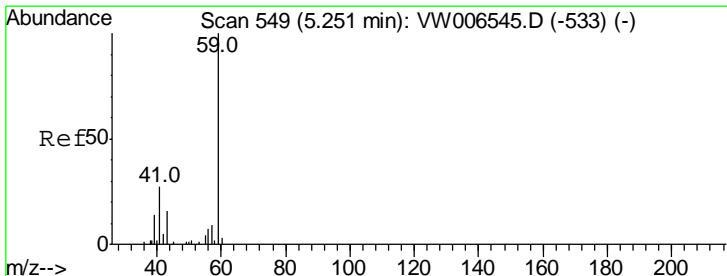
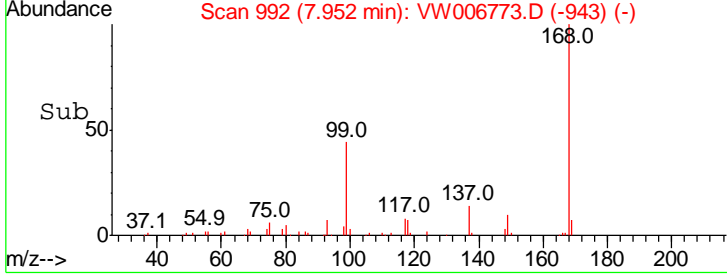
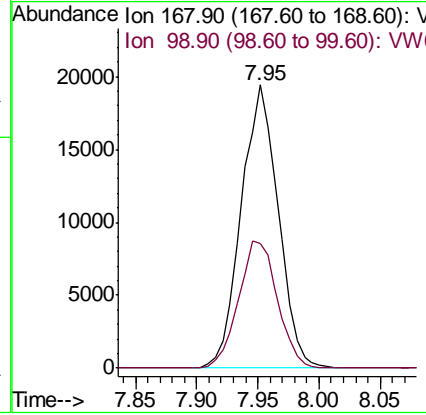
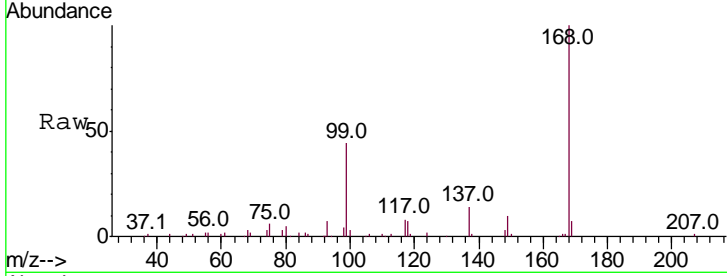




#1  
 Pentafluorobenzene  
 Concen: 50.000 ug/l  
 RT: 7.95 min Scan# 992  
 Delta R.T. 0.00 min  
 Lab File: VW006773.D  
 Acq: 08 Nov 2018 18:23

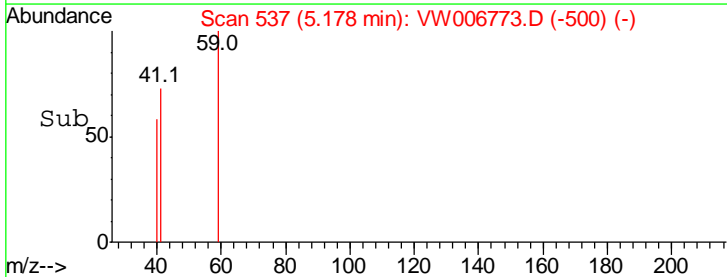
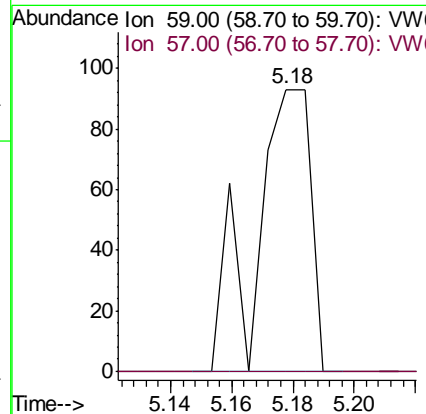
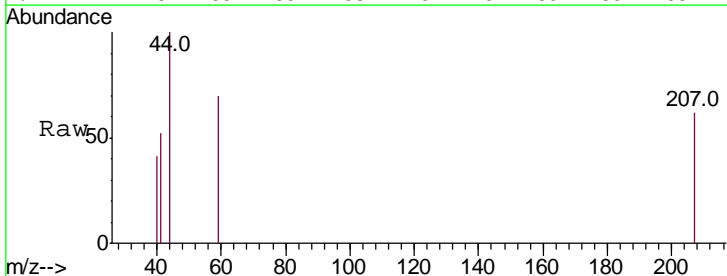
**Instrument :**  
 MSVOA\_W  
**ClientSampled :**  
 6ARE

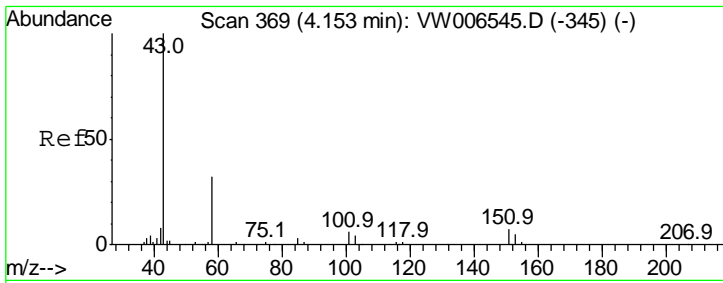
Tgt Ion	Resp	Lower	Upper
168	100		
99	43.9	37.4	56.0



#11  
 Tert butyl alcohol  
 Concen: 6.199 ug/l  
 RT: 5.18 min Scan# 537  
 Delta R.T. -0.07 min  
 Lab File: VW006773.D  
 Acq: 08 Nov 2018 18:23

Tgt Ion	Resp	Lower	Upper
59	100		
57	0.0	4.3	6.5#

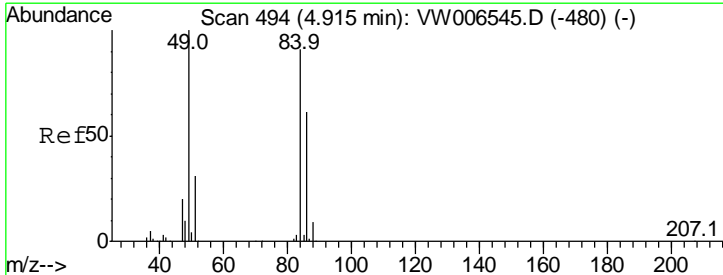
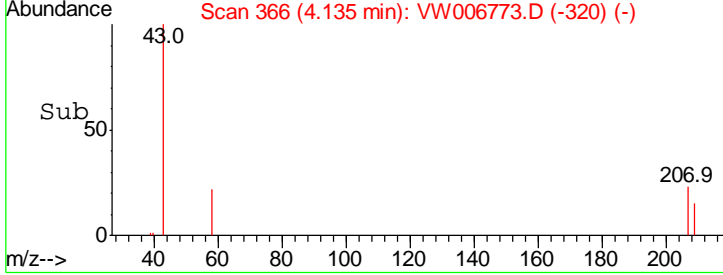
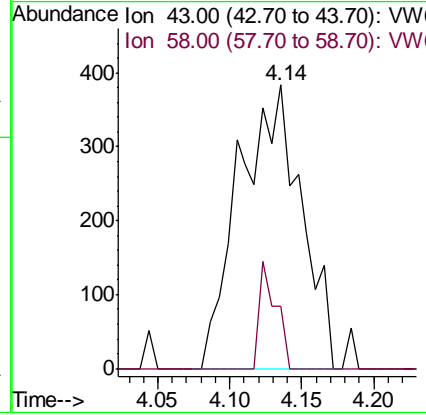
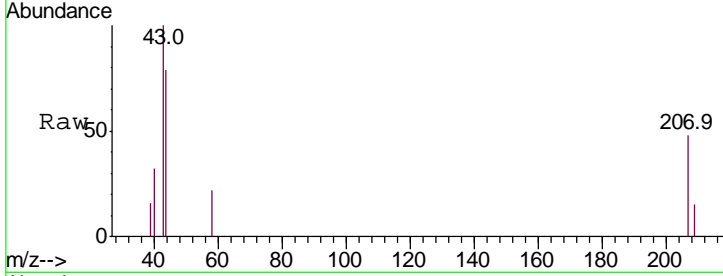




#16  
 Acetone  
 Concen: 20.333 ug/l  
 RT: 4.14 min Scan# 366  
 Delta R.T. -0.02 min  
 Lab File: VW006773.D  
 Acq: 08 Nov 2018 18:23

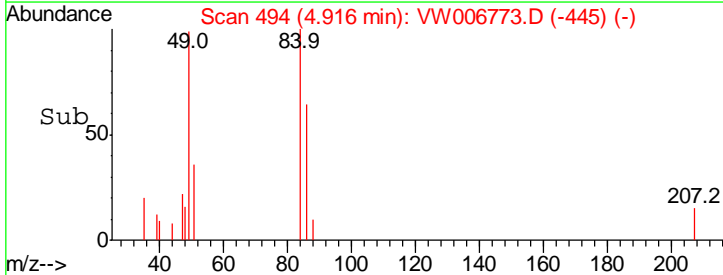
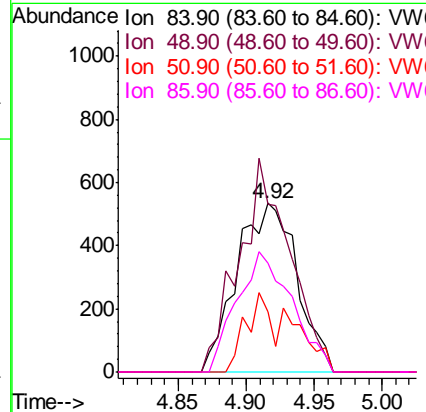
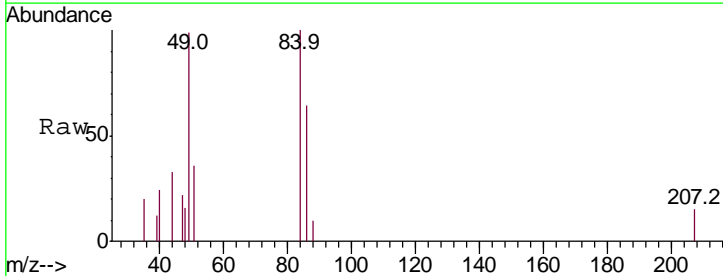
Instrument :  
 MSVOA\_W  
 ClientSampled :  
 6ARE

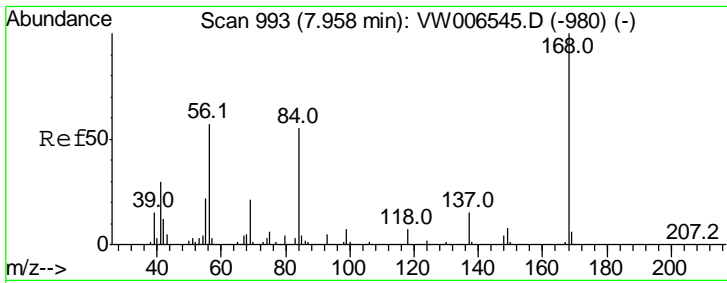
Tgt Ion: 43 Resp: 1150  
 Ion Ratio Lower Upper  
 43 100  
 58 22.2 25.8 38.8#



#20  
 Methylene Chloride  
 Concen: Below Cal  
 RT: 4.92 min Scan# 494  
 Delta R.T. 0.00 min  
 Lab File: VW006773.D  
 Acq: 08 Nov 2018 18:23

Tgt Ion: 84 Resp: 1651  
 Ion Ratio Lower Upper  
 84 100  
 49 99.3 88.2 132.4  
 51 35.5 27.0 40.6  
 86 64.3 53.8 80.8

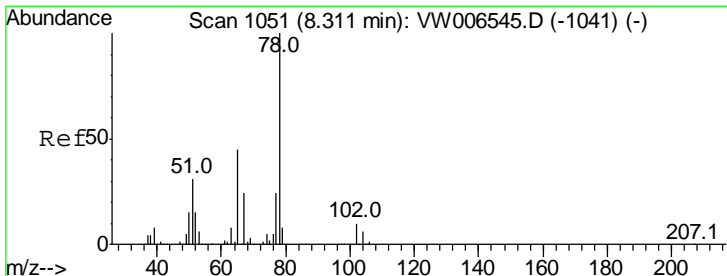
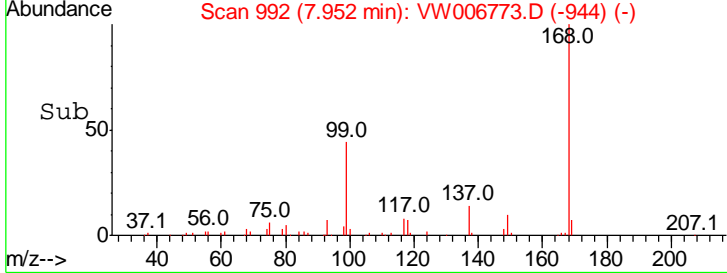
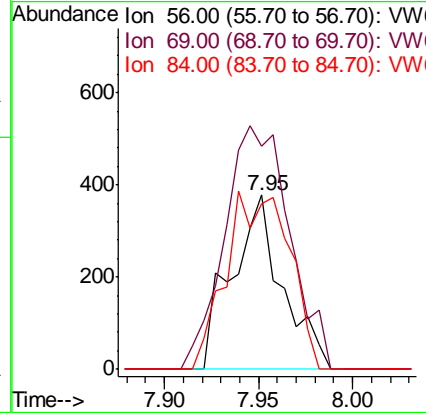
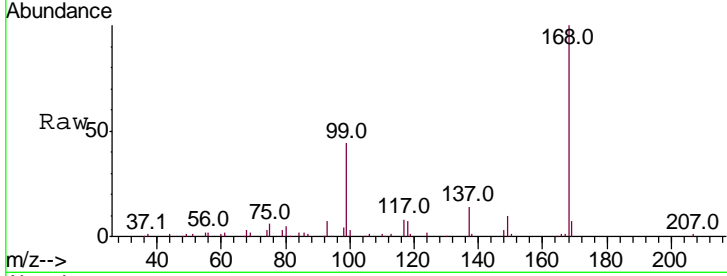




#31  
 Cyclohexane  
 Concen: 1.256 ug/l  
 RT: 7.95 min Scan# 992  
 Delta R.T. -0.01 min  
 Lab File: VW006773.D  
 Acq: 08 Nov 2018 18:23

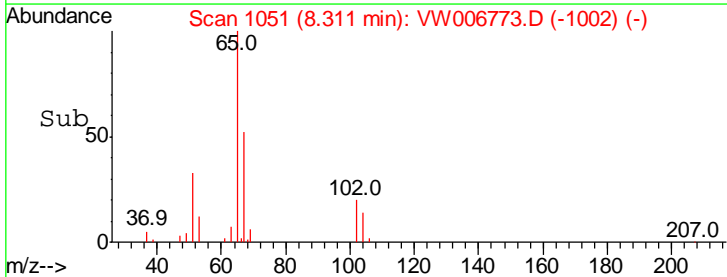
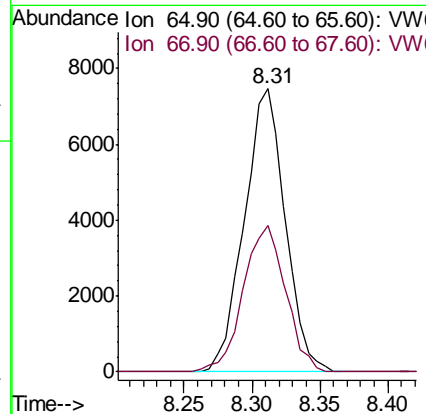
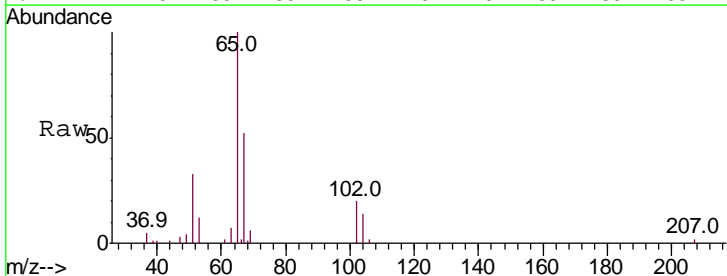
Instrument :  
 MSVOA\_W  
 ClientSampled :  
 6ARE

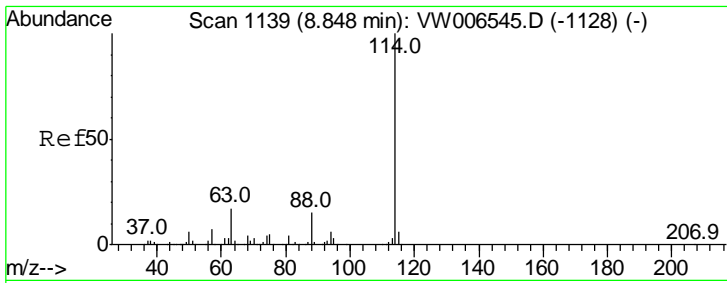
Tgt Ion	Resp	Lower	Upper
56	100		
69	128.0	29.0	43.4#
84	95.2	77.8	116.6



#33  
 1,2-Dichloroethane-d4  
 Concen: 44.819 ug/l  
 RT: 8.31 min Scan# 1051  
 Delta R.T. 0.00 min  
 Lab File: VW006773.D  
 Acq: 08 Nov 2018 18:23

Tgt Ion	Resp	Lower	Upper
65	100		
67	53.6	0.0	104.4

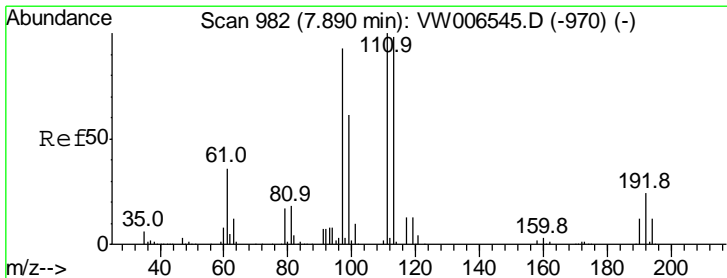
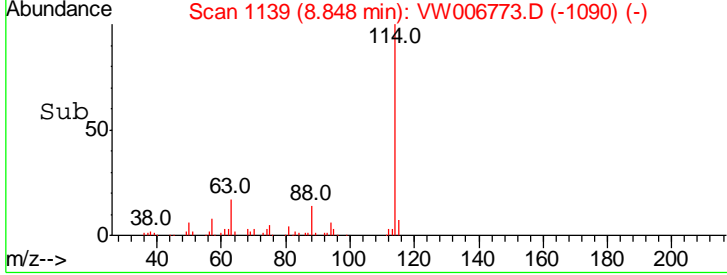
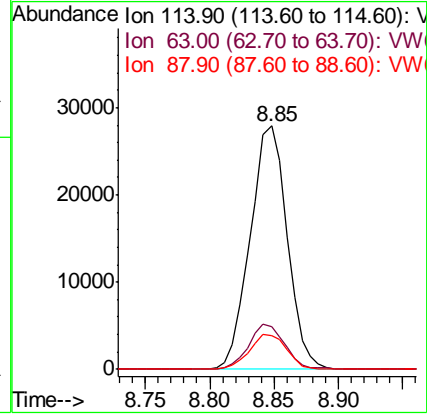
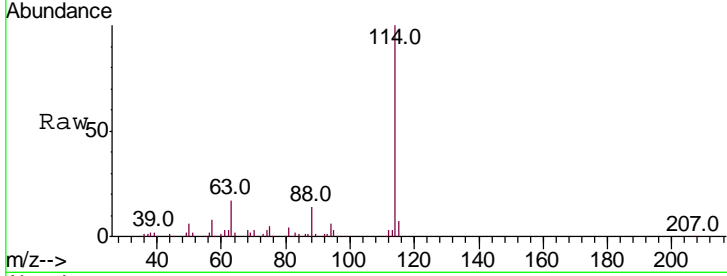




#34  
 1,4-Difluorobenzene  
 Concen: 50.000 ug/l  
 RT: 8.85 min Scan# 1139  
 Delta R.T. 0.00 min  
 Lab File: VW006773.D  
 Acq: 08 Nov 2018 18:23

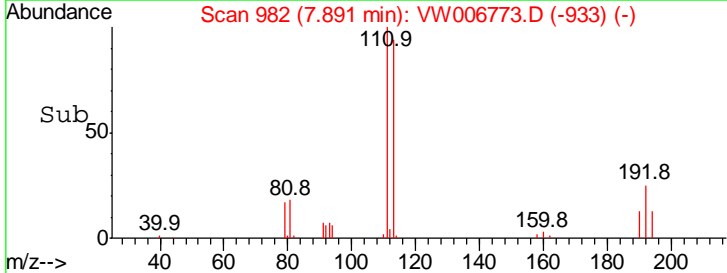
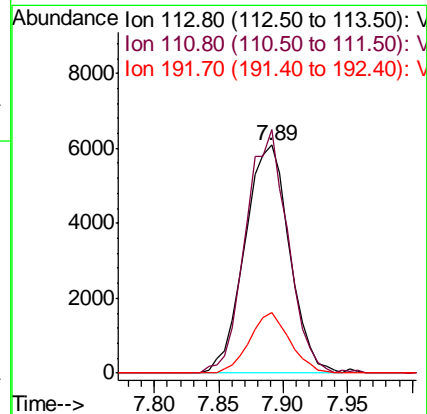
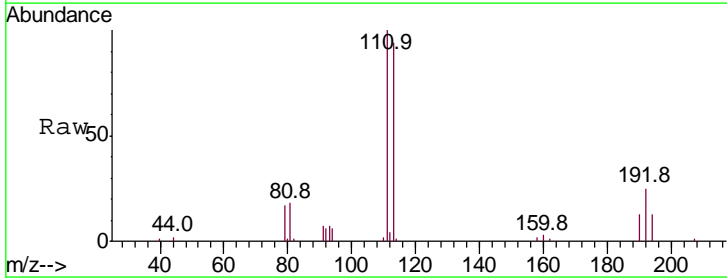
Instrument :  
 MSVOA\_W  
 ClientSampled :  
 6ARE

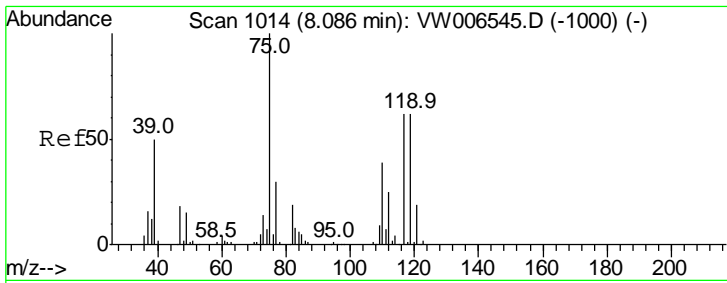
Tgt Ion	Resp	Lower	Upper
114	100		
63	17.3	0.0	34.4
88	14.1	0.0	29.0



#35  
 Dibromofluoromethane  
 Concen: 42.264 ug/l  
 RT: 7.89 min Scan# 982  
 Delta R.T. 0.00 min  
 Lab File: VW006773.D  
 Acq: 08 Nov 2018 18:23

Tgt Ion	Resp	Lower	Upper
113	100		
111	100.2	82.2	123.2
192	23.7	19.0	28.6

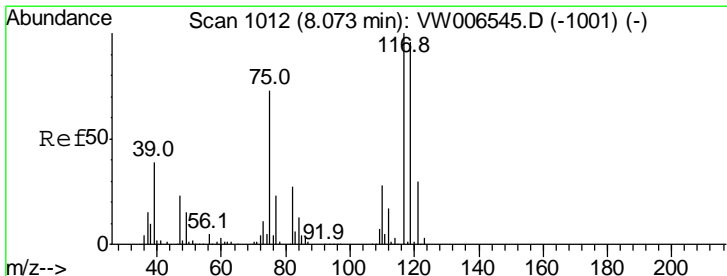
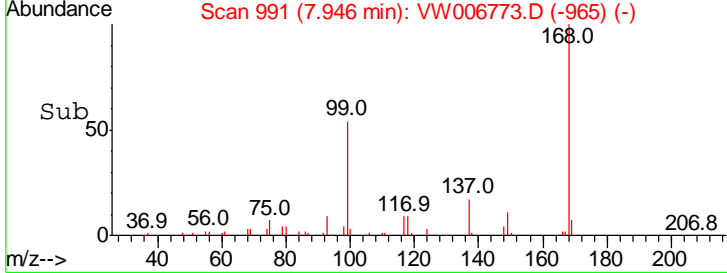
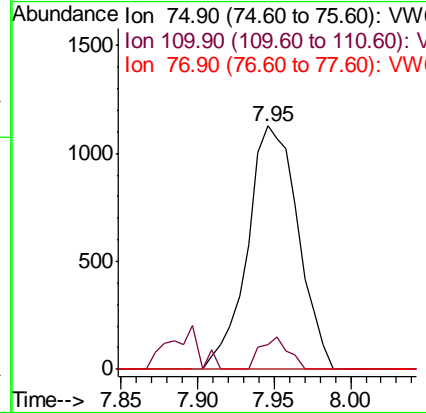
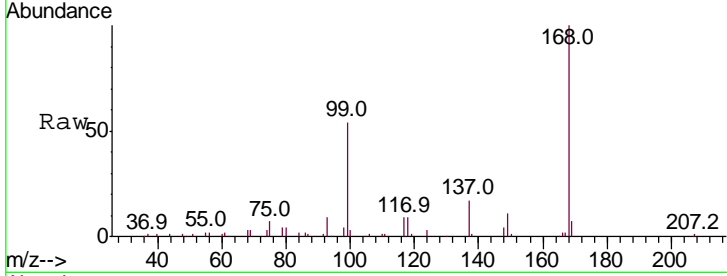




#36  
 1,1-Dichloropropene  
 Concen: 5.310 ug/l  
 RT: 7.95 min Scan# 991  
 Delta R.T. -0.14 min  
 Lab File: VW006773.D  
 Acq: 08 Nov 2018 18:23

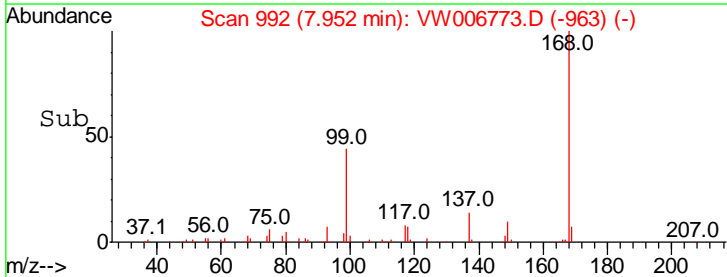
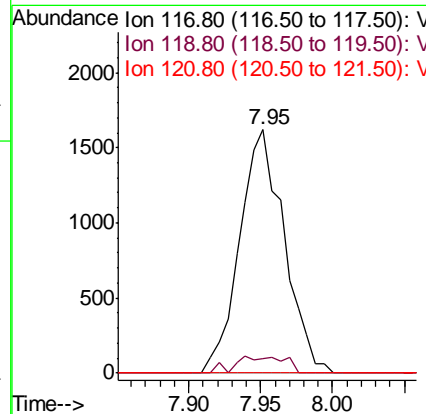
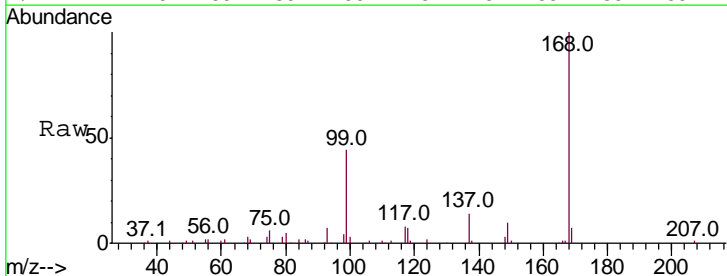
Instrument :  
 MSVOA\_W  
 ClientSampled :  
 6ARE

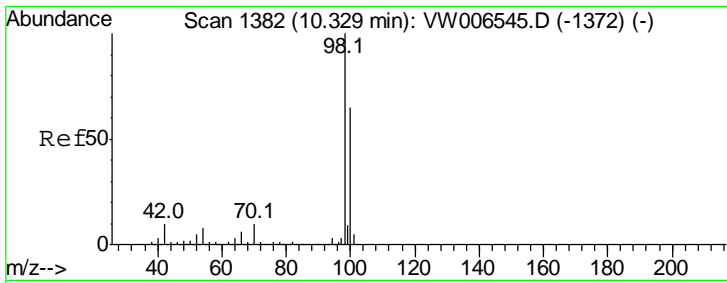
Tgt Ion	Resp	Lower	Upper
75	100		
110	7.4	19.5	58.5#
77	0.0	24.6	37.0#



#38  
 Carbon Tetrachloride  
 Concen: 6.837 ug/l  
 RT: 7.95 min Scan# 992  
 Delta R.T. -0.12 min  
 Lab File: VW006773.D  
 Acq: 08 Nov 2018 18:23

Tgt Ion	Resp	Lower	Upper
117	100		
119	6.1	76.3	114.5#
121	0.0	24.1	36.1#

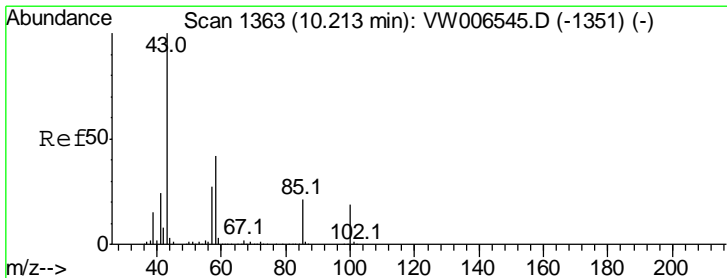
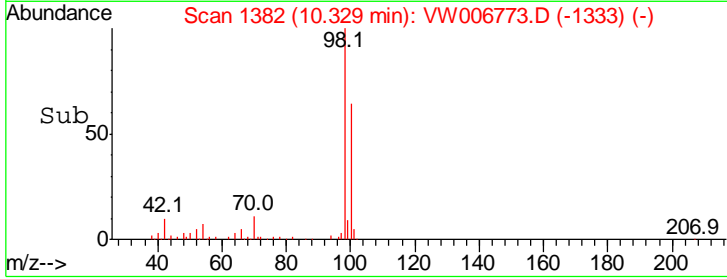
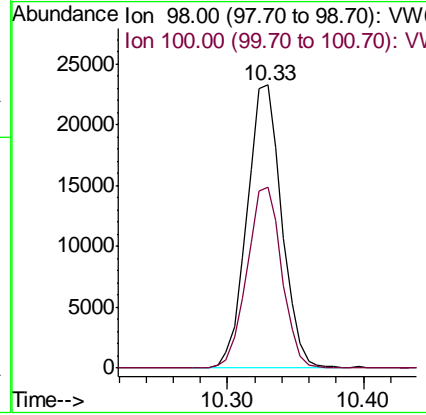
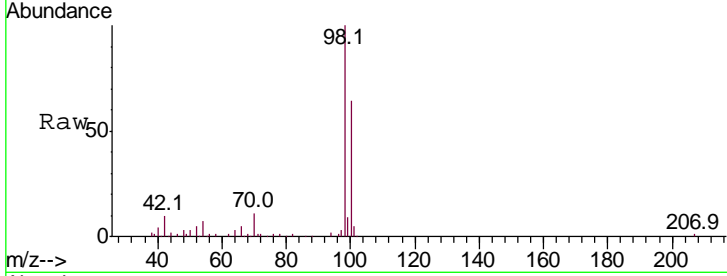




#50  
 Toluene-d8  
 Concen: 31.581 ug/l  
 RT: 10.33 min Scan# 1382  
 Delta R.T. 0.00 min  
 Lab File: VW006773.D  
 Acq: 08 Nov 2018 18:23

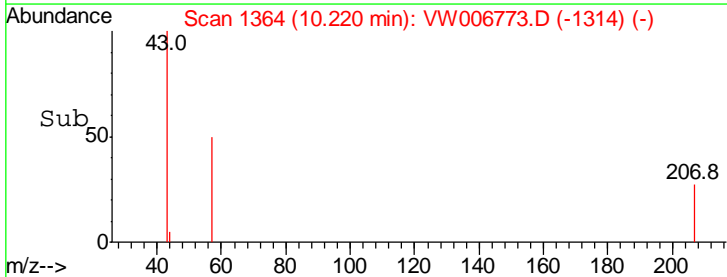
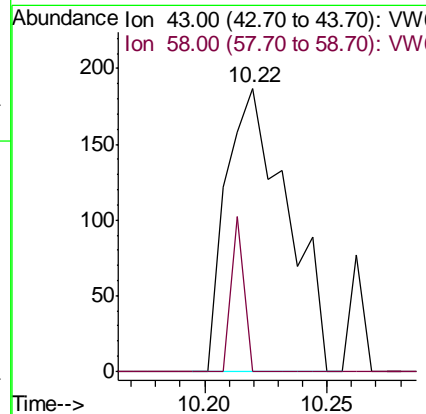
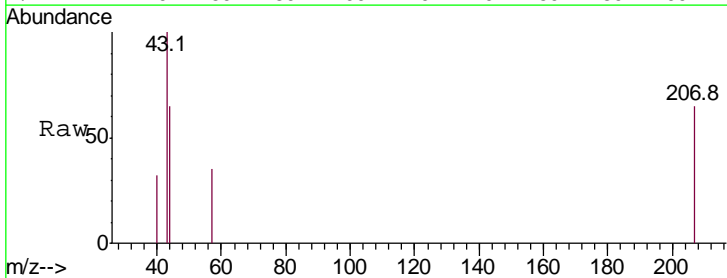
Instrument :  
 MSVOA\_W  
 ClientSampled :  
 6ARE

Tgt Ion: 98 Resp: 41770  
 Ion Ratio Lower Upper  
 98 100  
 100 63.6 51.6 77.4

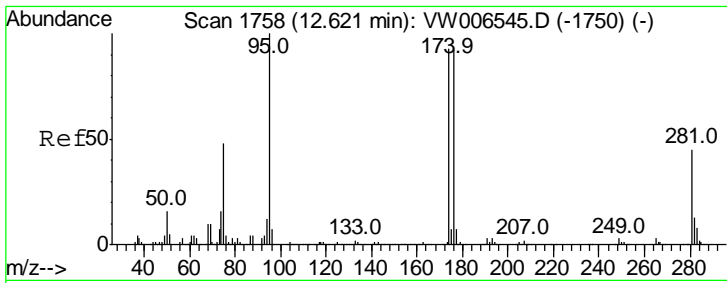


#51  
 4-Methyl-2-Pentanone  
 Concen: 1.874 ug/l  
 RT: 10.22 min Scan# 1364  
 Delta R.T. 0.01 min  
 Lab File: VW006773.D  
 Acq: 08 Nov 2018 18:23

Tgt Ion: 43 Resp: 324  
 Ion Ratio Lower Upper  
 43 100  
 58 11.4 33.4 50.0#



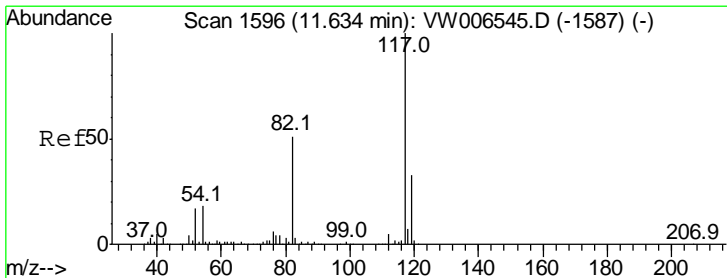
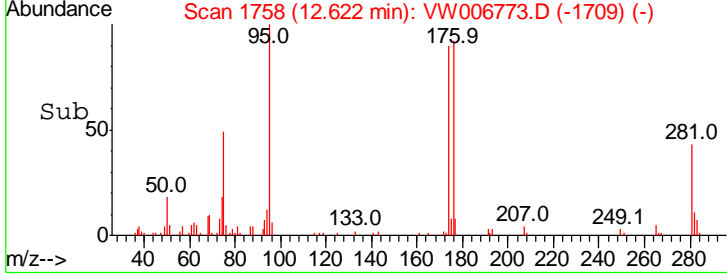
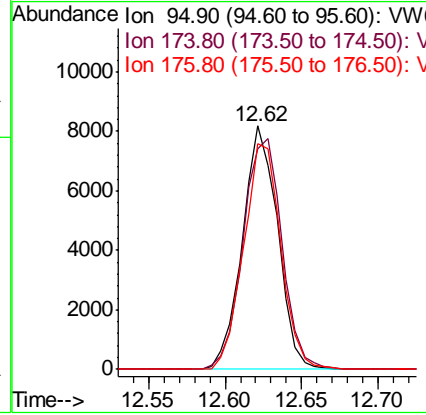
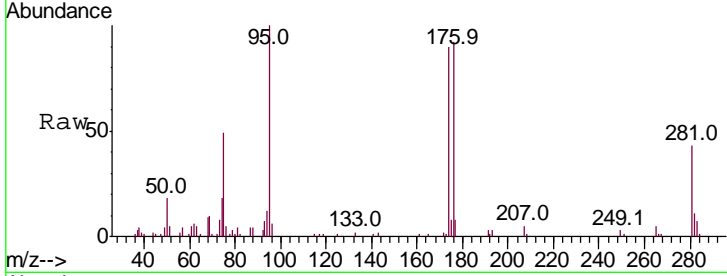




#62  
 4-Bromofluorobenzene  
 Concen: 27.328 ug/l  
 RT: 12.62 min Scan# 1758  
 Delta R.T. 0.00 min  
 Lab File: VW006773.D  
 Acq: 08 Nov 2018 18:23

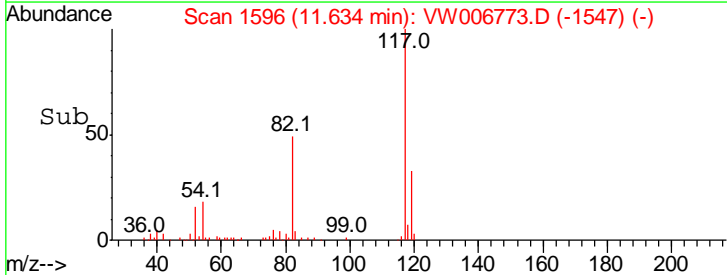
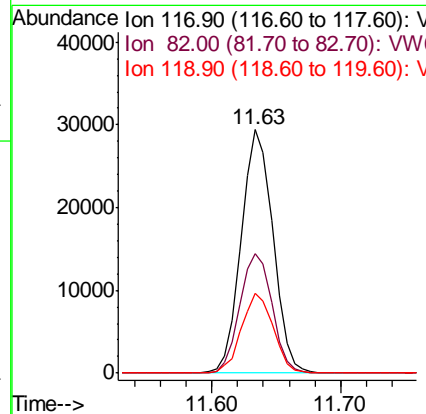
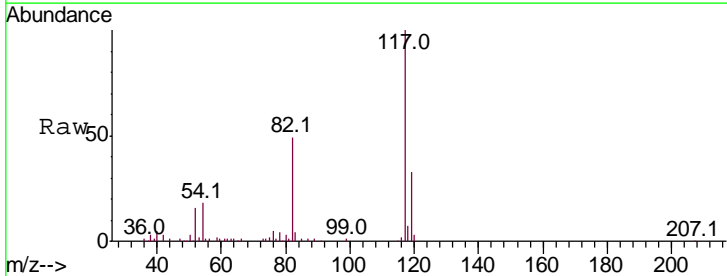
Instrument :  
 MSVOA\_W  
 ClientSampled :  
 6ARE

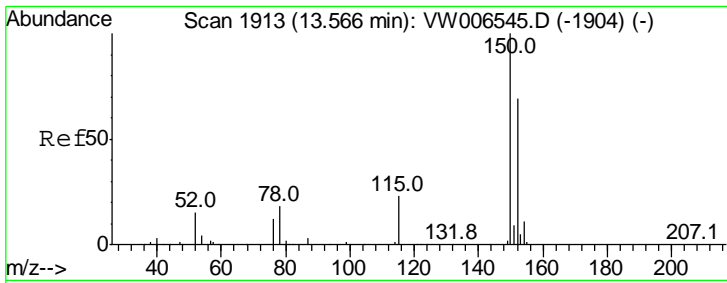
Tgt Ion	Resp	Lower	Upper
95	13104		
95	100		
174	104.6	0.0	192.4
176	97.9	0.0	187.4



#63  
 Chlorobenzene-d5  
 Concen: 50.000 ug/l  
 RT: 11.63 min Scan# 1596  
 Delta R.T. 0.00 min  
 Lab File: VW006773.D  
 Acq: 08 Nov 2018 18:23

Tgt Ion	Resp	Lower	Upper
117	50071		
117	100		
82	48.9	40.8	61.2
119	32.7	26.1	39.1

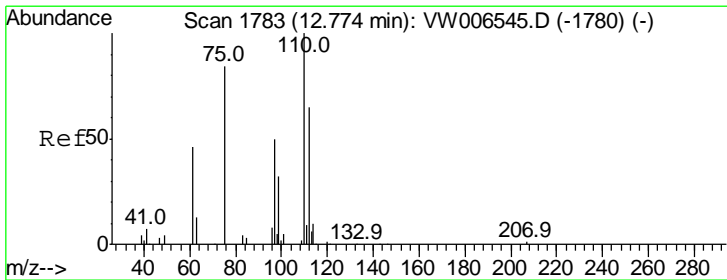
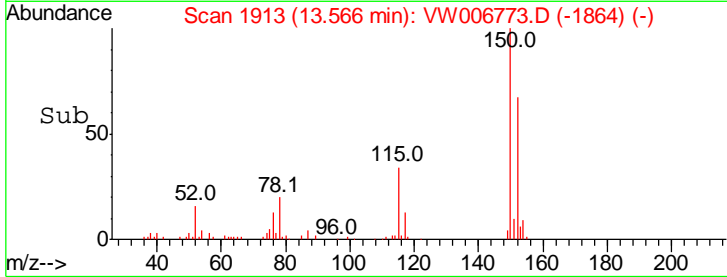
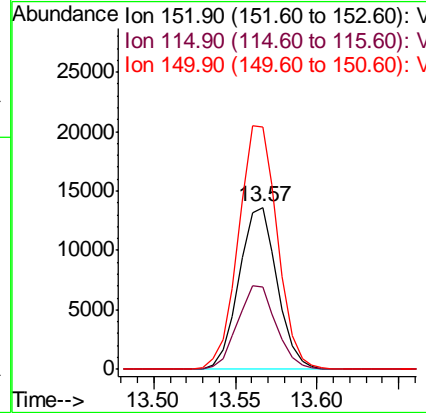
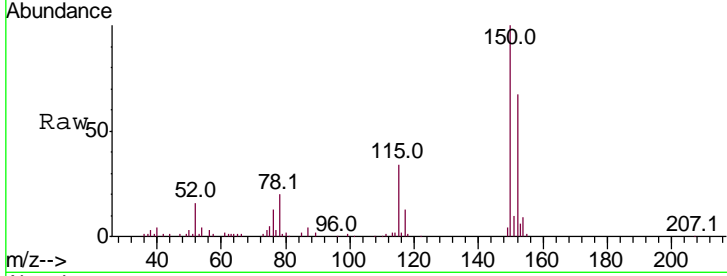




#72  
 1,4-Dichlorobenzene-d4  
 Concen: 50.000 ug/l  
 RT: 13.57 min Scan# 1913  
 Delta R.T. 0.00 min  
 Lab File: VW006773.D  
 Acq: 08 Nov 2018 18:23

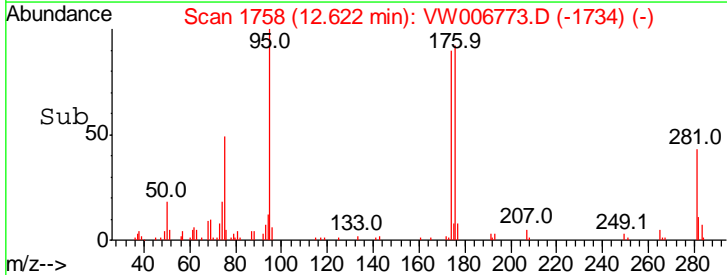
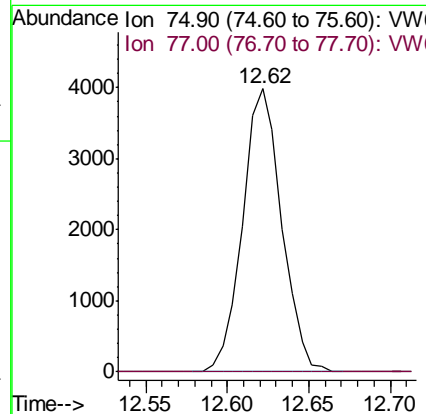
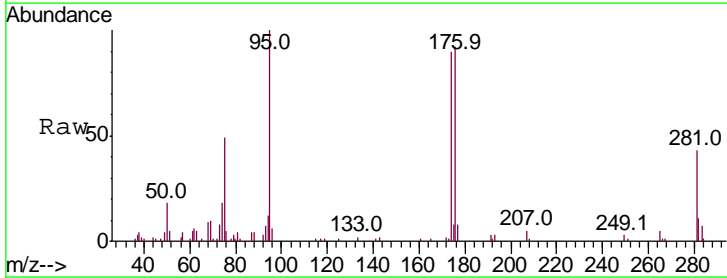
Instrument :  
 MSVOA\_W  
 ClientSampled :  
 6ARE

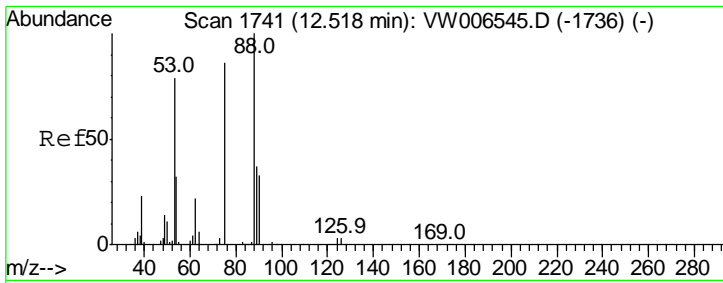
Tgt Ion	Resp	Lower	Upper
152	100		
115	52.4	26.6	79.8
150	153.9	0.0	344.6



#76  
 1,2,3-Trichloropropane  
 Concen: 38.483 ug/l  
 RT: 12.62 min Scan# 1758  
 Delta R.T. -0.15 min  
 Lab File: VW006773.D  
 Acq: 08 Nov 2018 18:23

Tgt Ion	Resp	Lower	Upper
75	100		
77	0.0	0.0	0.0

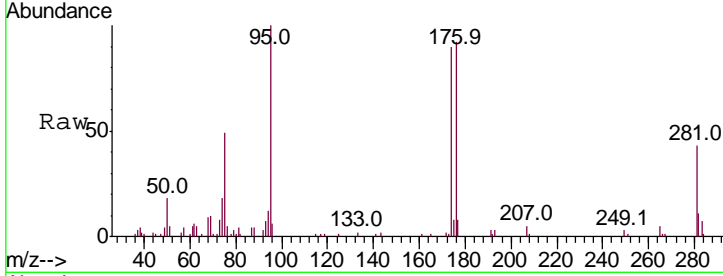




#81  
 trans-1,4-Dichloro-2-butene  
 Concen: 97.018 ug/l  
 RT: 12.62 min Scan# 1758  
 Delta R.T. 0.10 min  
 Lab File: VW006773.D  
 Acq: 08 Nov 2018 18:23

Instrument :  
 MSVOA\_W  
 ClientSampled :  
 6ARE

Tot Ion	Ratio	Lower	Upper
75	100		
53	0.0	77.2	115.8#
89	0.0	38.6	58.0#



Abundance Ion 74.90 (74.60 to 75.60): VW  
 Ion 53.00 (52.70 to 53.70): VW  
 Ion 88.90 (88.60 to 89.60): VW

