

Data Path : Z:\VOASRV\HPCHEM1\MSVOA W\DATA\VW110819\  
 Data File : VW013943.D  
 Acq On : 08 Nov 2019 14:37  
 Operator : SY/VA  
 Sample : K5742-04  
 Misc : 7.33G/5ML/MSVOA W/SOIL  
 ALS Vial : 9 Sample Multiplier: 1

Instrument :  
 MSVOA\_W  
 Client Sampled :  
 SB-18-(12-14)

Manual Integrations  
 APPROVED

MMDadoda  
 11/12/2019 12:58:37 PM

Quant Time: Nov 09 03:42:59 2019  
 Quant Method : Z:\VOASRV\HPCHEM1\MSVOA\_W\METHOD\82W102319S.M  
 Quant Title : SW846 8260  
 QLast Update : Wed Oct 23 14:11:46 2019  
 Response via : Initial Calibration

Internal Standards	R.T.	QIon	Response	Conc	Units	Dev(Min)
1) Pentafluorobenzene	7.95	168	310802	50.00	ug/l	0.00
34) 1,4-Difluorobenzene	8.84	114	458565	50.00	ug/l	0.00
63) Chlorobenzene-d5	11.63	117	377647	50.00	ug/l	0.00
72) 1,4-Dichlorobenzene-d4	13.56	152	171978	50.00	ug/l	0.00

## System Monitoring Compounds

33) 1,2-Dichloroethane-d4	8.31	65	122896	52.71	ug/l	0.00
Spiked Amount	50.000		Recovery	=	105.42%	
35) Dibromofluoromethane	7.88	113	125732	49.34	ug/l	0.00
Spiked Amount	50.000		Recovery	=	98.68%	
50) Toluene-d8	10.32	98	565705	54.49	ug/l	0.00
Spiked Amount	50.000		Recovery	=	108.98%	
62) 4-Bromofluorobenzene	12.62	95	169582	48.24	ug/l	0.00
Spiked Amount	50.000		Recovery	=	96.48%	

## Target Compounds

						Qvalue
16) Acetone	4.12	43	38299	77.473	ug/l	93
25) 2-Butanone	7.18	43	13054	18.367	ug/l #	81
31) Cyclohexane	7.95	56	88028	16.988	ug/l #	96
39) Methylcyclohexane	9.34	83	377527	68.453	ug/l	98
67) Ethyl Benzene	11.73	91	128934	9.214	ug/l	98
68) m/p-Xylenes	11.83	106	14005	2.590	ug/l	98
73) Isopropylbenzene	12.46	105	55153	4.466	ug/l	100
78) n-propylbenzene	12.80	91	87642	6.131	ug/l	100
80) 1,3,5-Trimethylbenzene	12.94	105	182345	17.490	ug/l	97
84) 1,2,4-Trimethylbenzene	13.25	105	51957	5.052	ug/l	100
85) sec-Butylbenzene	13.38	105	17876	1.413	ug/l #	57
86) p-Isopropyltoluene	13.50	119	28880	2.450	ug/l	98
89) n-Butylbenzene	13.82	91	13414m	1.261	ug/l	
95) Naphthalene	15.36	128	43931	7.768	ug/l	97

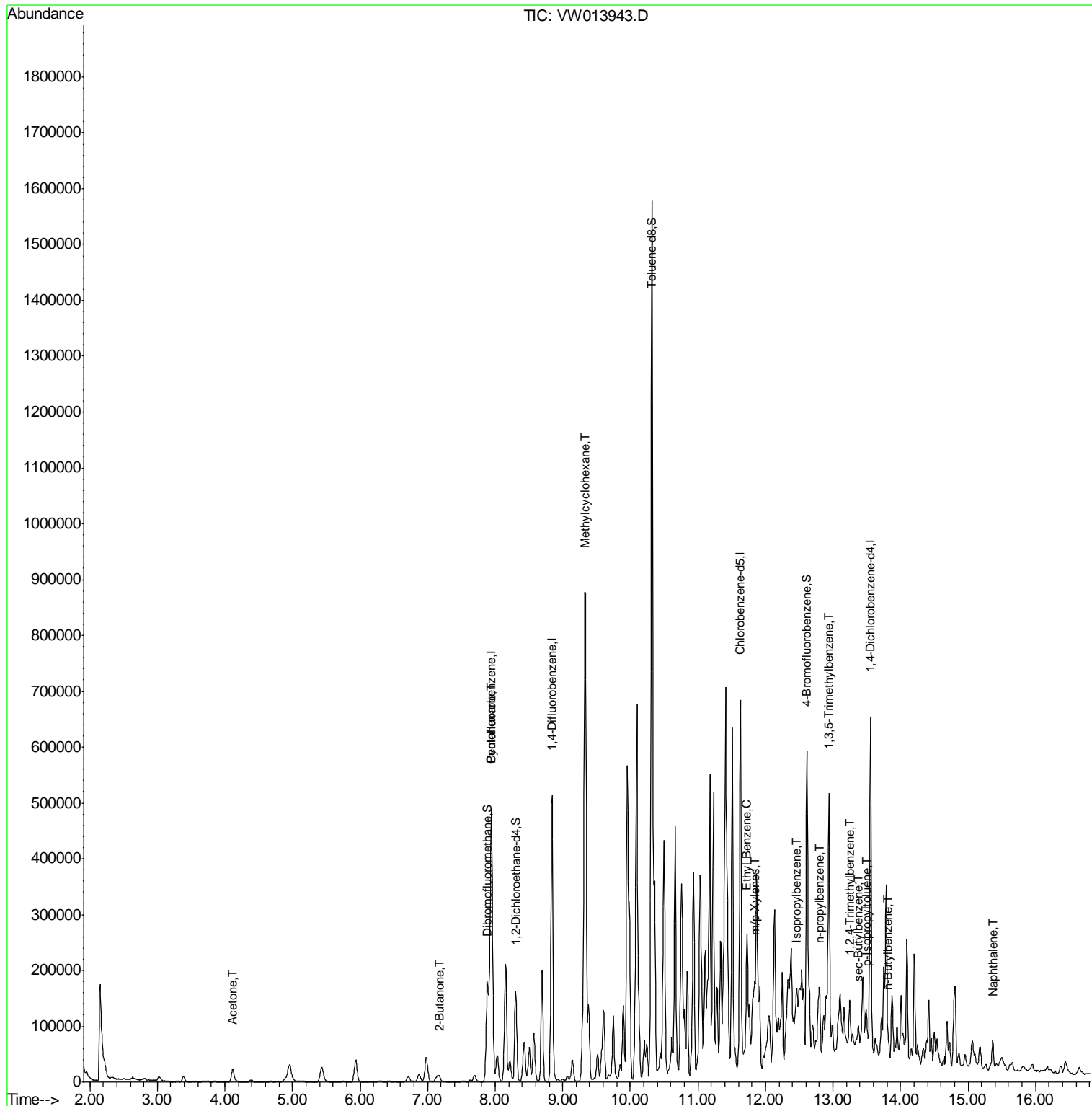
(#) = qualifier out of range (m) = manual integration (+) = signals summed

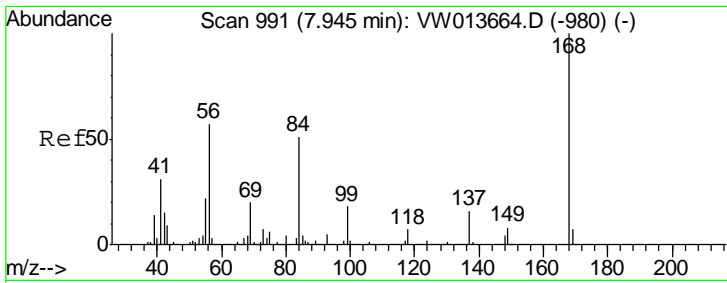
Data Path : Z:\VOASRV\HPCHEM1\MSVOA W\DATA\VW110819\  
 Data File : VW013943.D  
 Acq On : 08 Nov 2019 14:37  
 Operator : SY/VA  
 Sample : K5742-04  
 Misc : 7.33G/5ML/MSVOA W/SOIL  
 ALS Vial : 9 Sample Multiplier: 1

Instrument :  
 MSVOA\_W  
 Client Sampled :  
 SB-18-(12-14)

Manual Integrations  
 APPROVED  
 MMDadoda  
 11/12/2019 12:58:37 PM

Quant Time: Nov 09 03:42:59 2019  
 Quant Method : Z:\VOASRV\HPCHEM1\MSVOA\_W\METHOD\82W102319S.M  
 Quant Title : SW846 8260  
 QLast Update : Wed Oct 23 14:11:46 2019  
 Response via : Initial Calibration





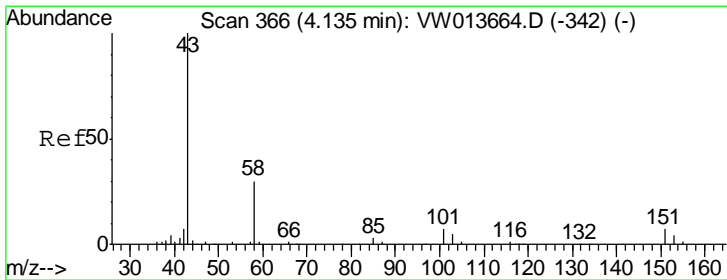
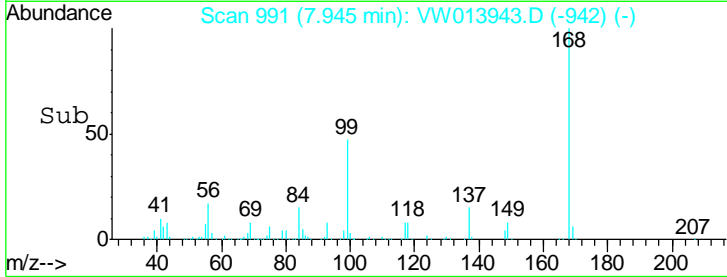
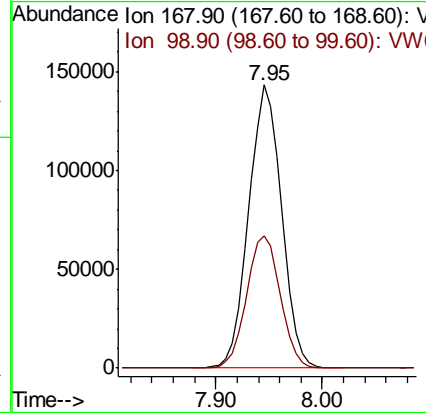
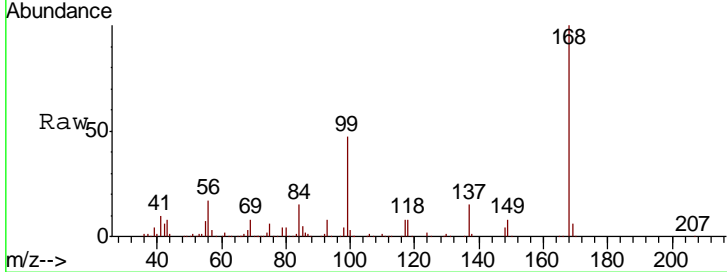
#1  
 Pentafluorobenzene  
 Concen: 50.000 ug/l  
 RT: 7.95 min Scan# 991  
 Delta R.T. -0.00 min  
 Lab File: VW013943.D  
 Acq: 08 Nov 2019 14:37

**Instrument :**  
 MSVOA\_W  
**ClientSampled :**  
 SB-18-(12-14)

Tgt Ion	Resp	Lower	Upper
168	100		
99	46.8	39.0	58.6

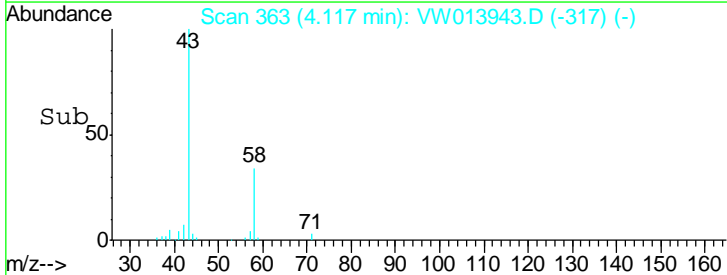
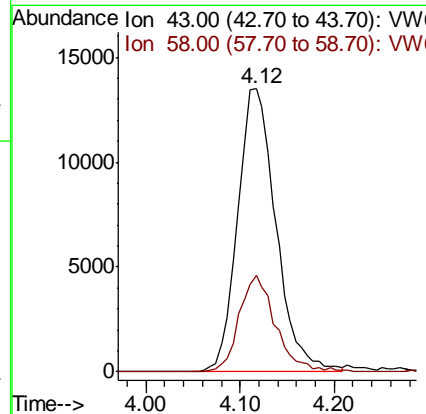
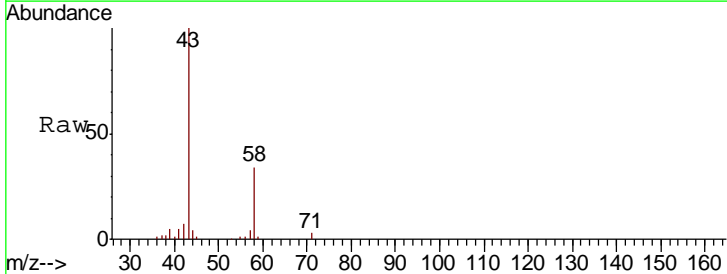
**Manual Integrations**  
**APPROVED**

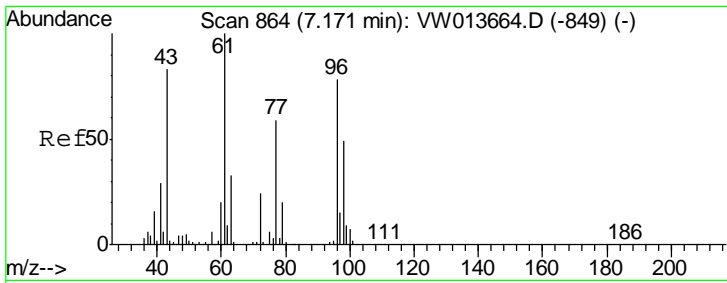
MMDadoda  
 11/12/2019 12:58:37 PM



#16  
 Acetone  
 Concen: 77.473 ug/l  
 RT: 4.12 min Scan# 363  
 Delta R.T. -0.02 min  
 Lab File: VW013943.D  
 Acq: 08 Nov 2019 14:37

Tgt Ion	Resp	Lower	Upper
43	100		
58	34.0	24.1	36.1





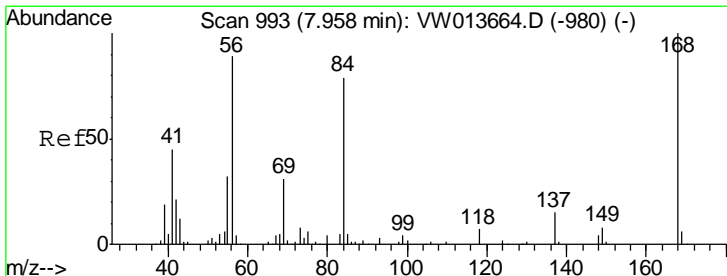
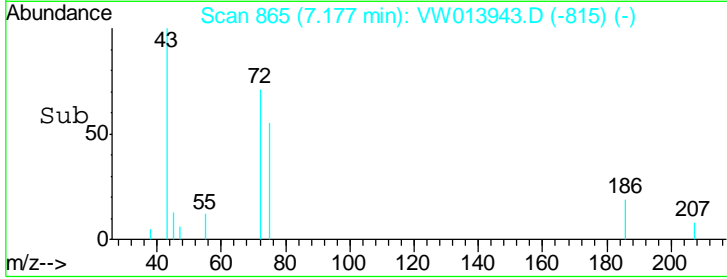
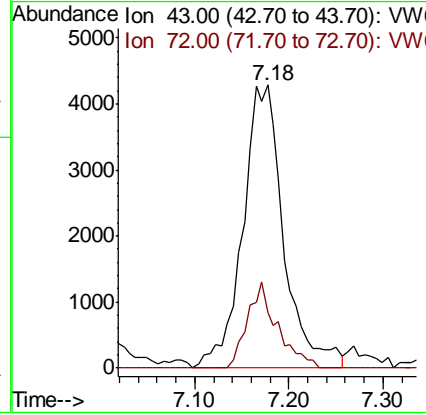
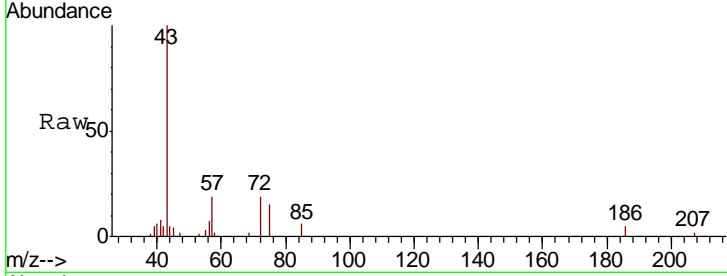
#25  
 2-Butanone  
 Concen: 18.367 ug/l  
 RT: 7.18 min Scan# 865  
 Delta R.T. 0.01 min  
 Lab File: VW013943.D  
 Acq: 08 Nov 2019 14:37

**Instrument :**  
 MSVOA\_W  
**ClientSampled :**  
 SB-18-(12-14)

Tgt Ion	Ratio	Lower	Upper
43	100		
72	19.5	23.6	35.4#

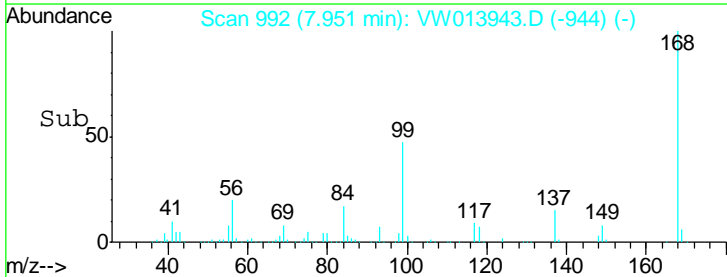
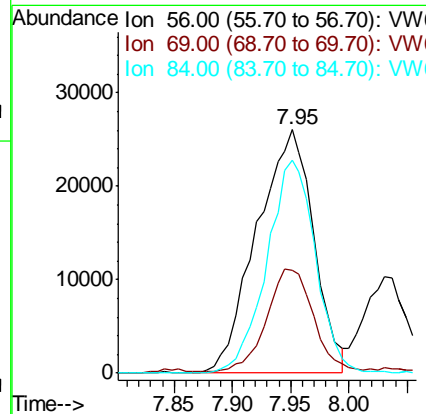
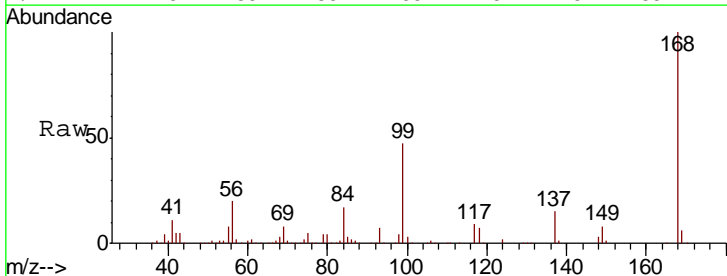
**Manual Integrations**  
**APPROVED**

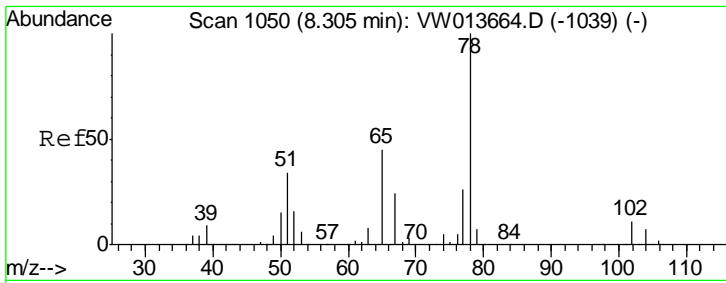
MMDadoda  
 11/12/2019 12:58:37 PM



#31  
 Cyclohexane  
 Concen: 16.988 ug/l  
 RT: 7.95 min Scan# 992  
 Delta R.T. -0.01 min  
 Lab File: VW013943.D  
 Acq: 08 Nov 2019 14:37

Tgt Ion	Ratio	Lower	Upper
56	100		
69	41.5	27.5	41.3#
84	87.3	70.8	106.2





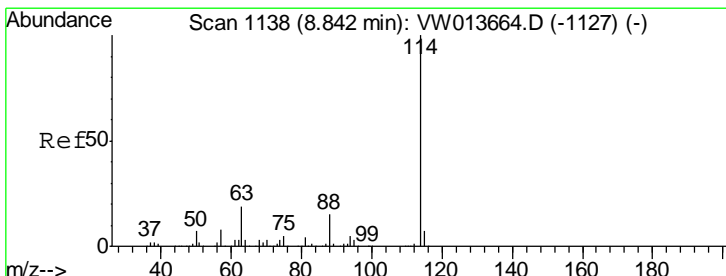
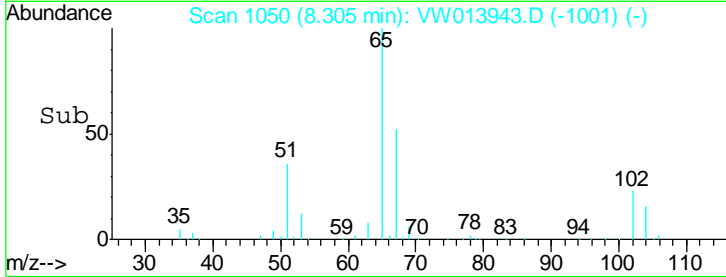
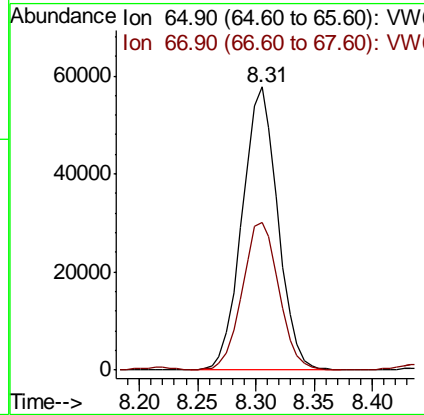
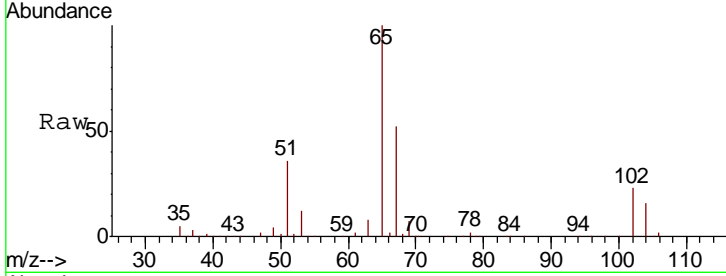
#33  
 1,2-Dichloroethane-d4  
 Concen: 52.711 ug/l  
 RT: 8.31 min Scan# 1050  
 Delta R.T. -0.00 min  
 Lab File: VW013943.D  
 Acq: 08 Nov 2019 14:37

**Instrument :**  
 MSVOA\_W  
**ClientSampled :**  
 SB-18-(12-14)

Tgt Ion	Resp	Lower	Upper
65	122896		
65	100		
67	53.9	0.0	109.4

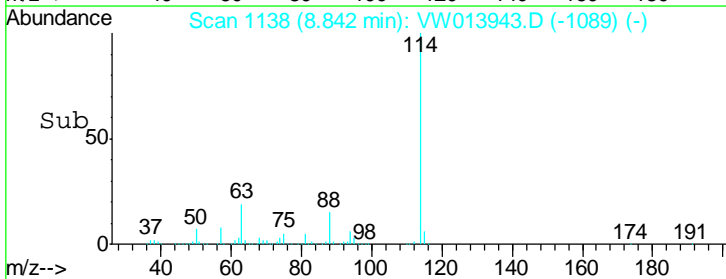
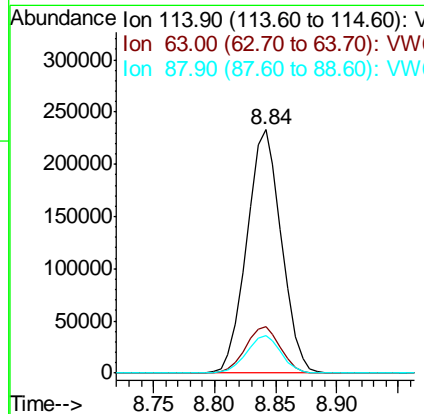
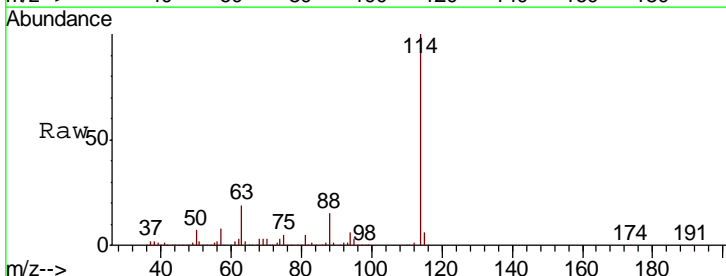
**Manual Integrations**  
**APPROVED**

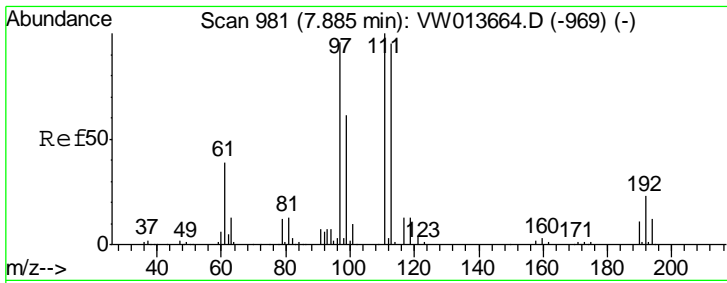
MMDadoda  
 11/12/2019 12:58:37 PM



#34  
 1,4-Difluorobenzene  
 Concen: 50.000 ug/l  
 RT: 8.84 min Scan# 1138  
 Delta R.T. -0.00 min  
 Lab File: VW013943.D  
 Acq: 08 Nov 2019 14:37

Tgt Ion	Resp	Lower	Upper
114	458565		
114	100		
63	19.0	0.0	37.6
88	15.3	0.0	30.2





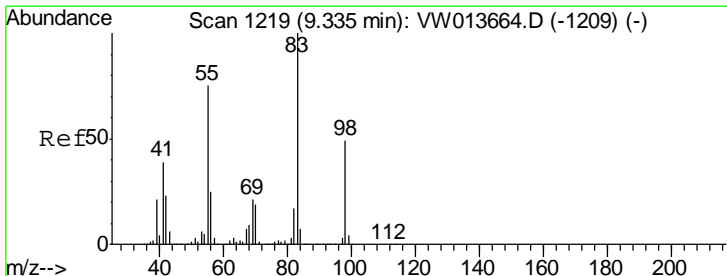
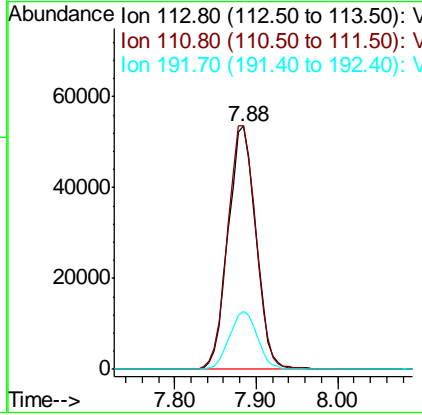
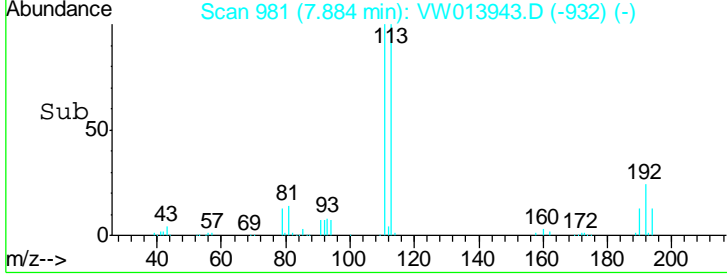
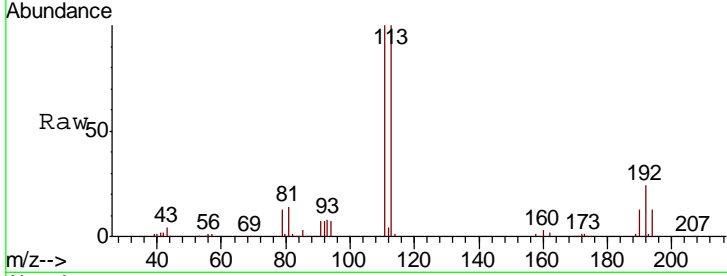
#35  
 Dibromofluoromethane  
 Concen: 49.345 ug/l  
 RT: 7.88 min Scan# 981  
 Delta R.T. -0.00 min  
 Lab File: VW013943.D  
 Acq: 08 Nov 2019 14:37

**Instrument :**  
 MSVOA\_W  
**ClientSampled :**  
 SB-18-(12-14)

Tgt Ion	Resp	Lower	Upper
113	125732		
113	100		
111	101.5	83.0	124.6
192	24.0	19.4	29.2

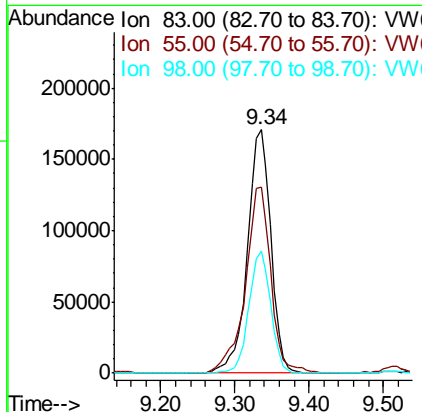
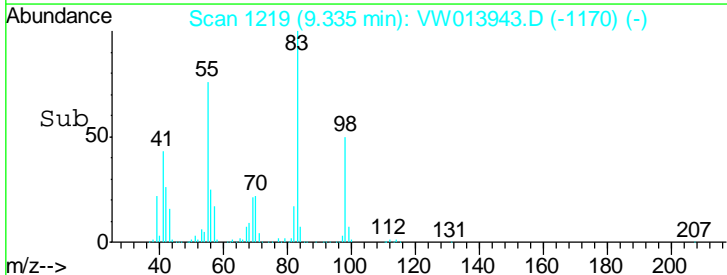
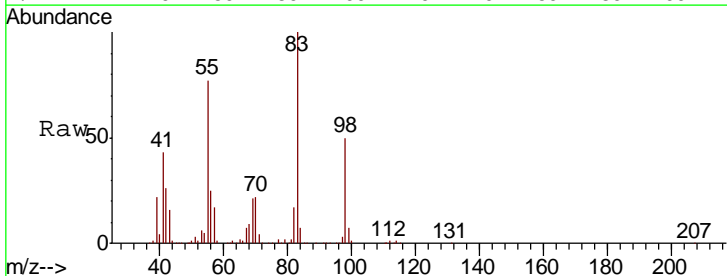
**Manual Integrations**  
**APPROVED**

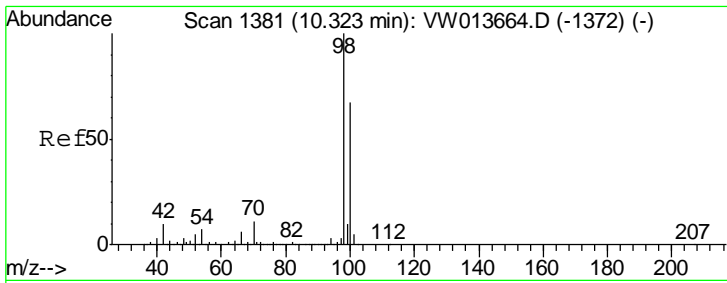
MMDadoda  
 11/12/2019 12:58:37 PM



#39  
 Methylcyclohexane  
 Concen: 68.453 ug/l  
 RT: 9.34 min Scan# 1219  
 Delta R.T. -0.00 min  
 Lab File: VW013943.D  
 Acq: 08 Nov 2019 14:37

Tgt Ion	Resp	Lower	Upper
83	377527		
83	100		
55	76.4	59.9	89.9
98	50.3	39.4	59.2





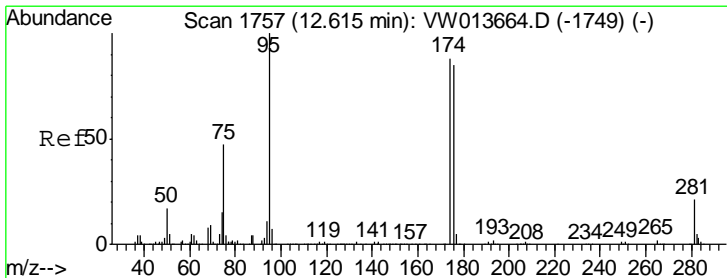
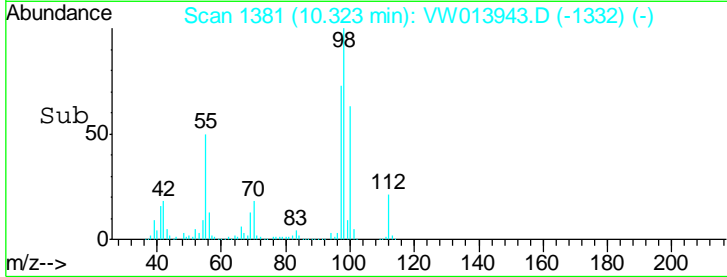
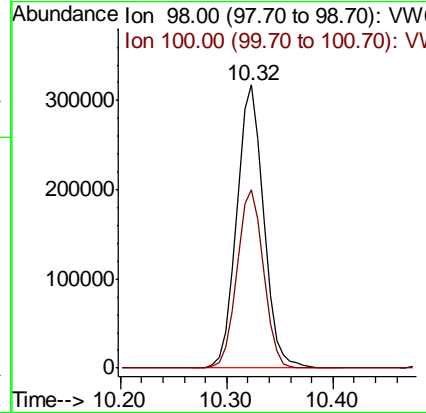
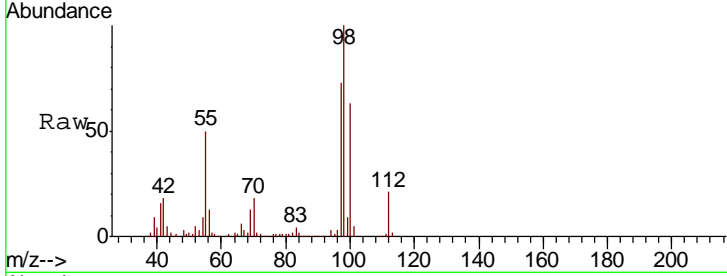
#50  
 Toluene-d8  
 Concen: 54.486 ug/l  
 RT: 10.32 min Scan# 1381  
 Delta R.T. -0.00 min  
 Lab File: VW013943.D  
 Acq: 08 Nov 2019 14:37

**Instrument :**  
 MSVOA\_W  
**ClientSampled :**  
 SB-18-(12-14)

Tgt Ion	Resp	Lower	Upper
98	100		
100	61.7	53.4	80.0

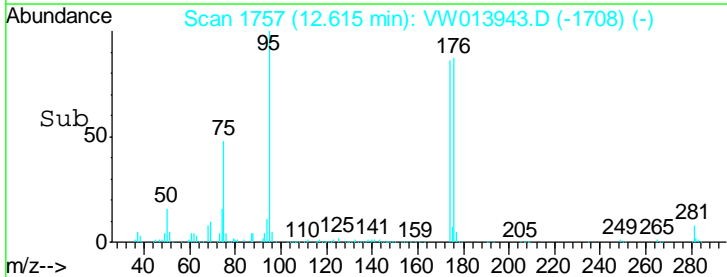
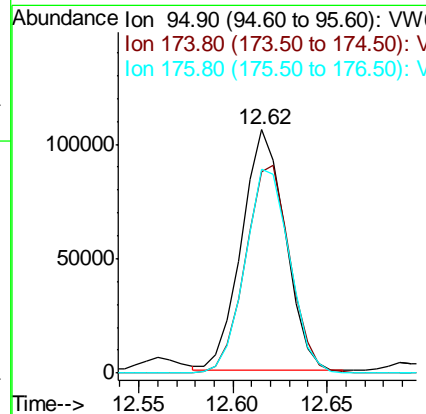
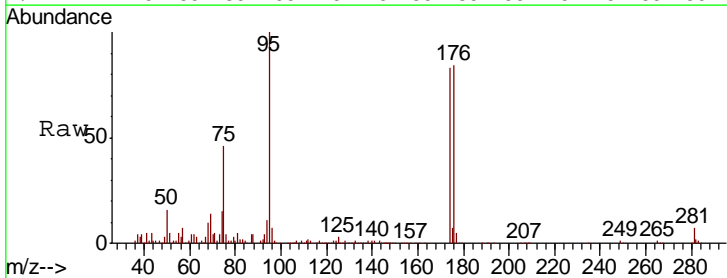
**Manual Integrations**  
**APPROVED**

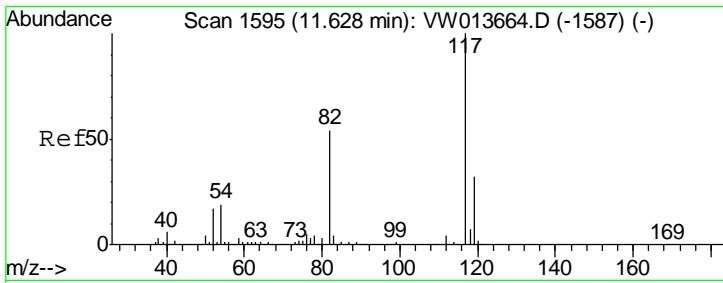
MMDadoda  
 11/12/2019 12:58:37 PM



#62  
 4-Bromofluorobenzene  
 Concen: 48.237 ug/l  
 RT: 12.62 min Scan# 1757  
 Delta R.T. -0.00 min  
 Lab File: VW013943.D  
 Acq: 08 Nov 2019 14:37

Tgt Ion	Resp	Lower	Upper
95	100		
174	87.9	0.0	183.6
176	86.3	0.0	178.0





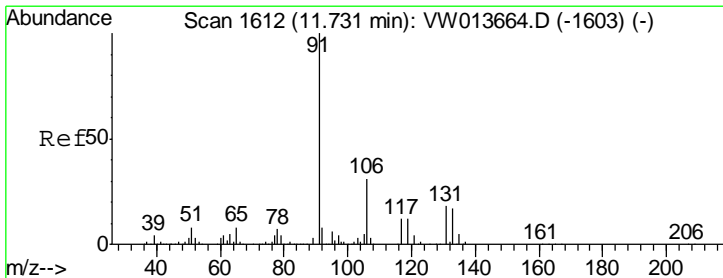
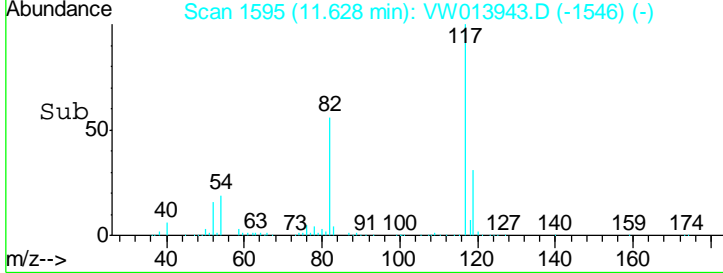
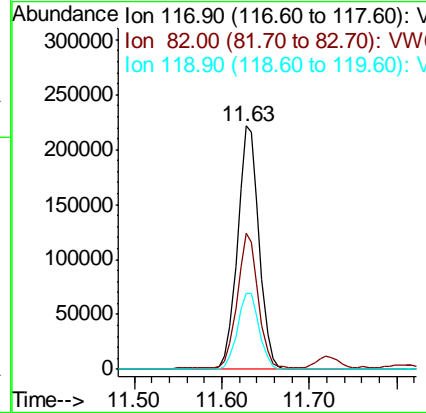
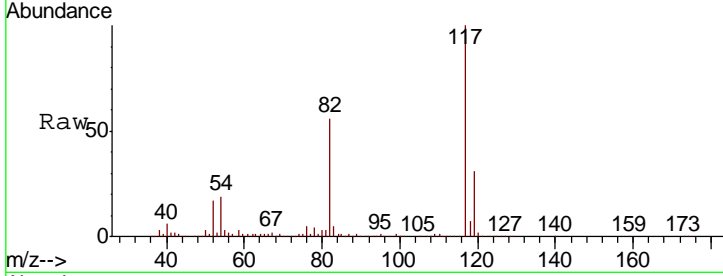
#63  
 Chlorobenzene-d5  
 Concen: 50.000 ug/l  
 RT: 11.63 min Scan# 1595  
 Delta R.T. -0.00 min  
 Lab File: VW013943.D  
 Acq: 08 Nov 2019 14:37

Instrument : MSVOA\_W  
 ClientSampled : SB-18-(12-14)

Tgt Ion	Resp	Lower	Upper
117	377647		
82	55.1	43.6	65.4
119	31.2	25.4	38.2

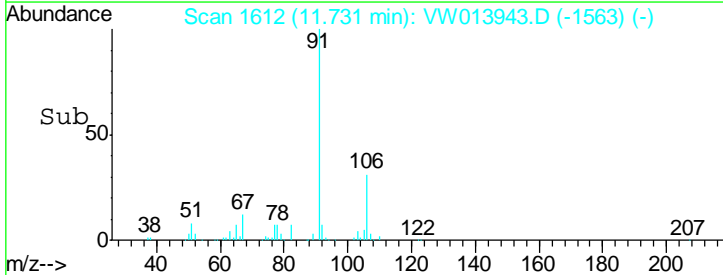
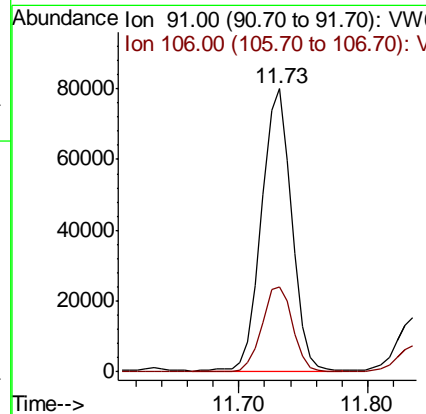
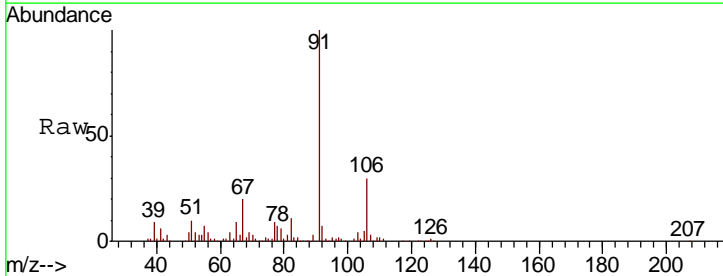
Manual Integrations  
 APPROVED

MMDadoda  
 11/12/2019 12:58:37 PM

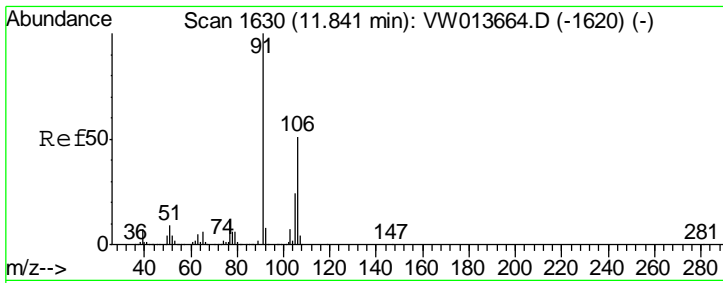


#67  
 Ethyl Benzene  
 Concen: 9.214 ug/l  
 RT: 11.73 min Scan# 1612  
 Delta R.T. -0.00 min  
 Lab File: VW013943.D  
 Acq: 08 Nov 2019 14:37

Tgt Ion	Resp	Lower	Upper
91	128934		
106	30.3	25.0	37.6







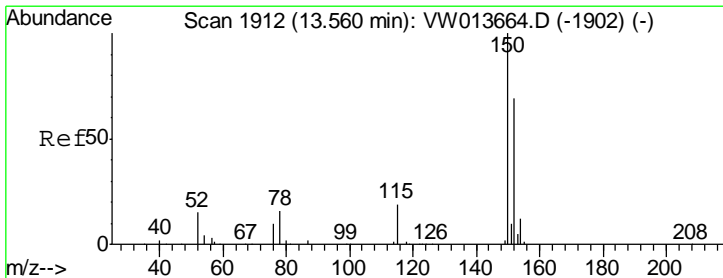
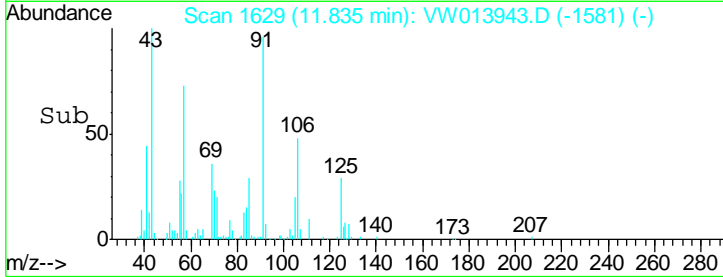
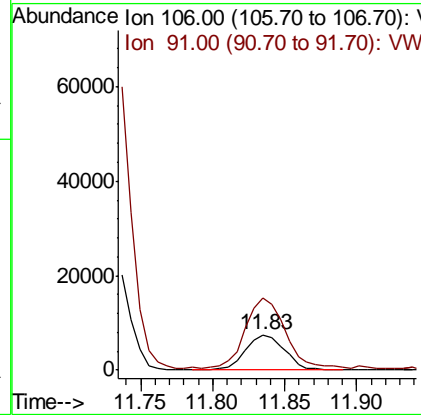
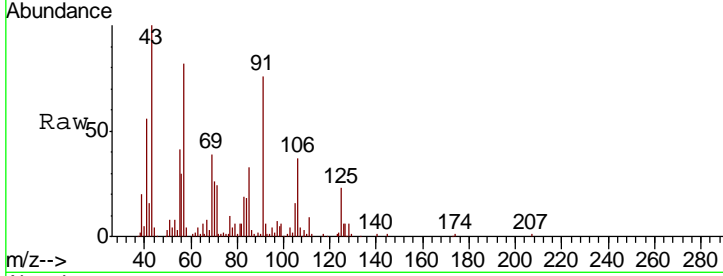
#68  
 m/p-Xylenes  
 Concen: 2.590 ug/l  
 RT: 11.83 min Scan# 1629  
 Delta R.T. -0.01 min  
 Lab File: VW013943.D  
 Acq: 08 Nov 2019 14:37

**Instrument :**  
 MSVOA\_W  
**ClientSampled :**  
 SB-18-(12-14)

Tgt Ion	Resp	Lower	Upper
106	14005		
106	100		
91	201.3	159.2	238.8

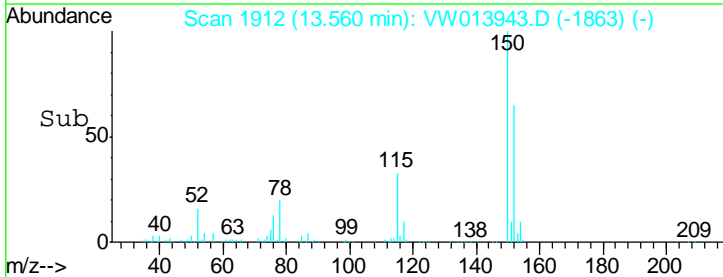
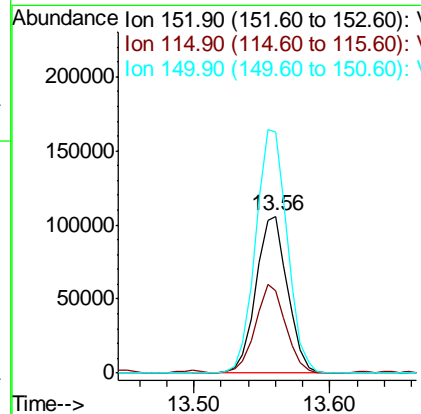
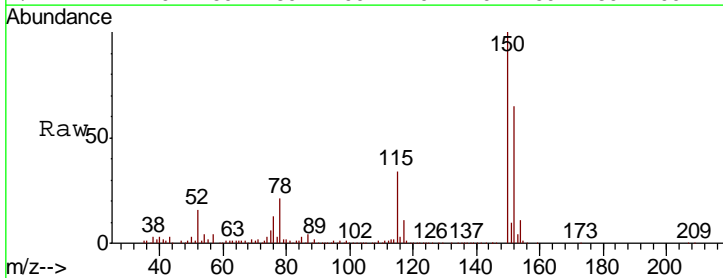
**Manual Integrations**  
**APPROVED**

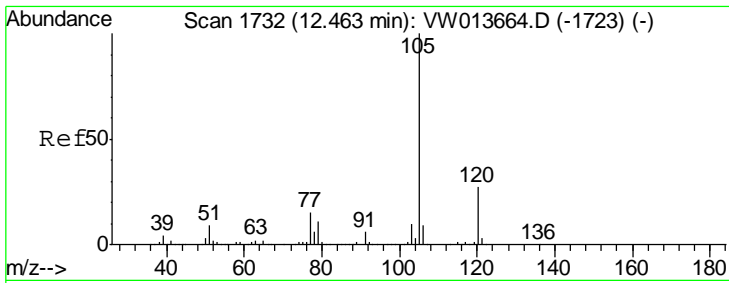
MMDadoda  
 11/12/2019 12:58:37 PM



#72  
 1,4-Dichlorobenzene-d4  
 Concen: 50.000 ug/l  
 RT: 13.56 min Scan# 1912  
 Delta R.T. -0.00 min  
 Lab File: VW013943.D  
 Acq: 08 Nov 2019 14:37

Tgt Ion	Resp	Lower	Upper
152	171978		
152	100		
115	53.7	27.4	82.2
150	156.0	0.0	345.4





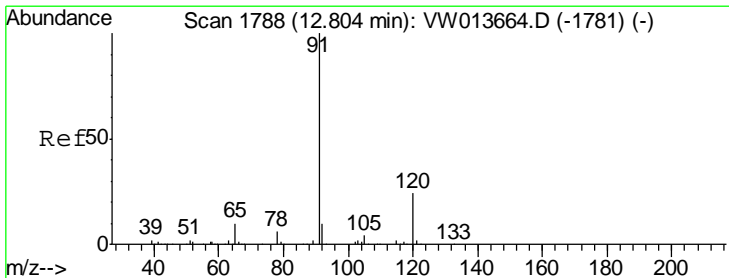
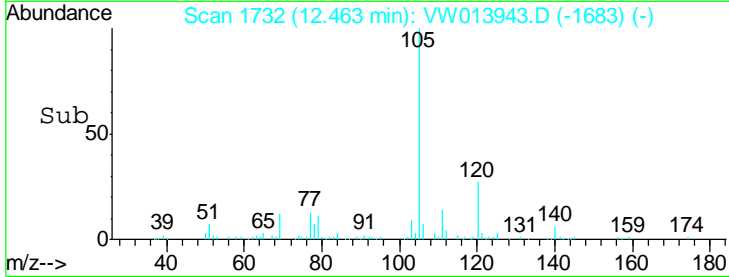
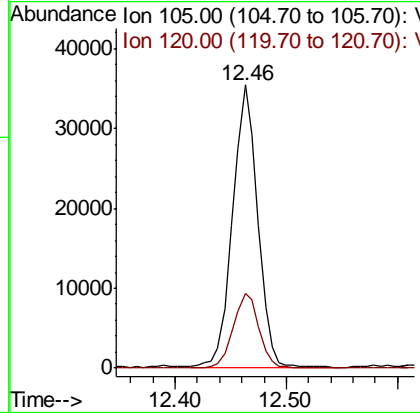
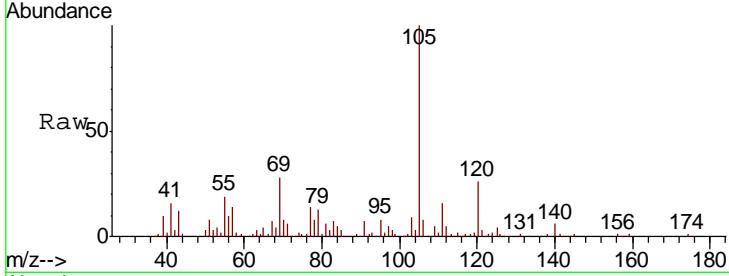
#73  
 Isopropylbenzene  
 Concen: 4.466 ug/l  
 RT: 12.46 min Scan# 1732  
 Delta R.T. -0.00 min  
 Lab File: VW013943.D  
 Acq: 08 Nov 2019 14:37

Instrument : MSVOA\_W  
 ClientSampled : SB-18-(12-14)

Tgt Ion	Resp	Lower	Upper
105	100		
120	27.0	13.5	40.4

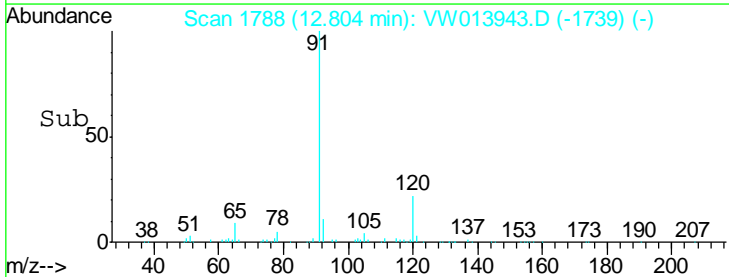
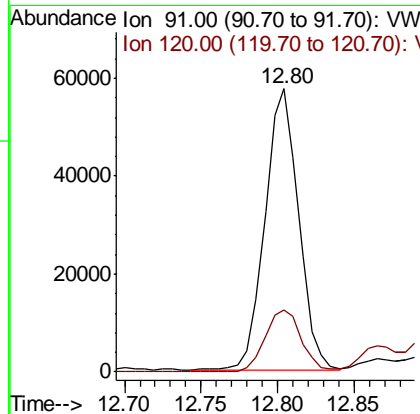
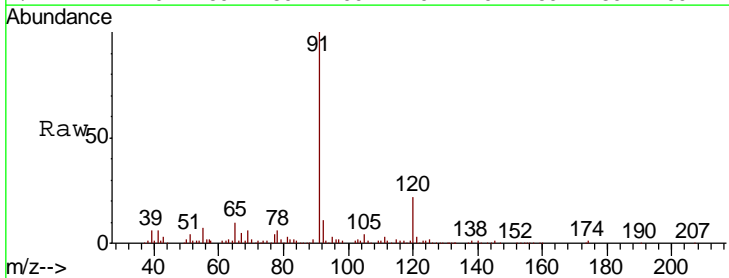
Manual Integrations  
 APPROVED

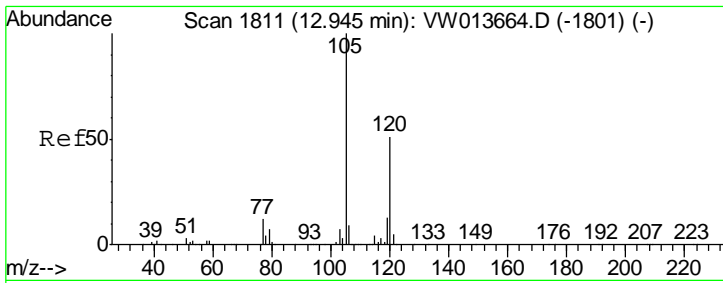
MMDadoda  
 11/12/2019 12:58:37 PM



#78  
 n-propylbenzene  
 Concen: 6.131 ug/l  
 RT: 12.80 min Scan# 1788  
 Delta R.T. -0.00 min  
 Lab File: VW013943.D  
 Acq: 08 Nov 2019 14:37

Tgt Ion	Resp	Lower	Upper
91	100		
120	23.9	12.0	36.0





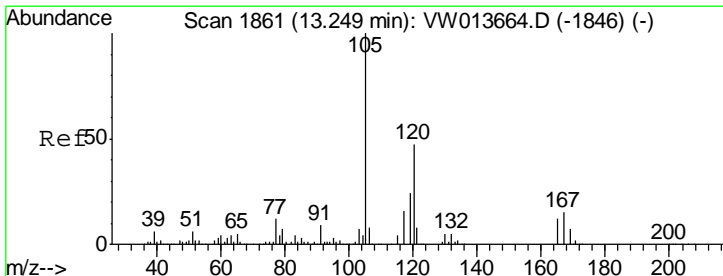
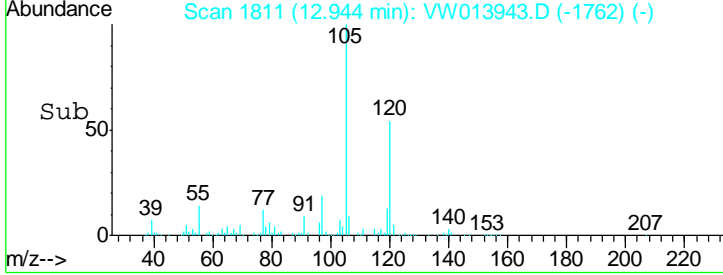
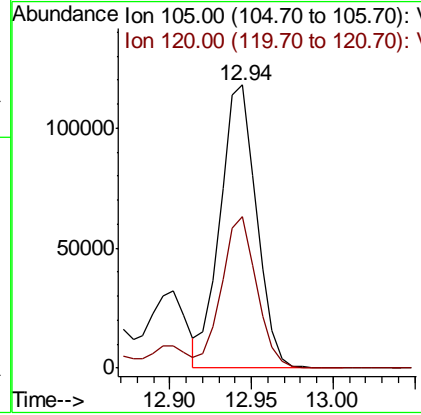
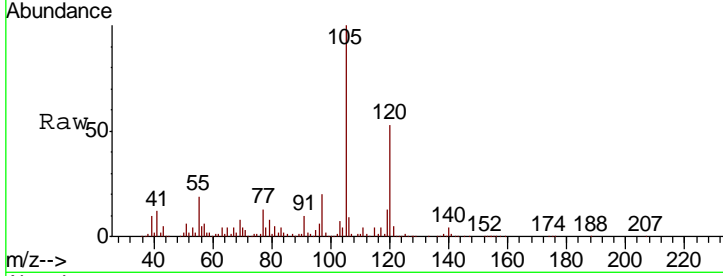
#80  
 1,3,5-Trimethylbenzene  
 Concen: 17.490 ug/l  
 RT: 12.94 min Scan# 1811  
 Delta R.T. -0.00 min  
 Lab File: VW013943.D  
 Acq: 08 Nov 2019 14:37

Instrument : MSVOA\_W  
 ClientSampled : SB-18-(12-14)

Tgt Ion	Resp	Lower	Upper
105	182345		
120	52.0	25.1	75.3

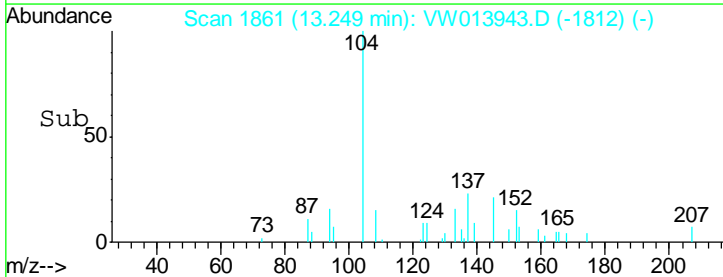
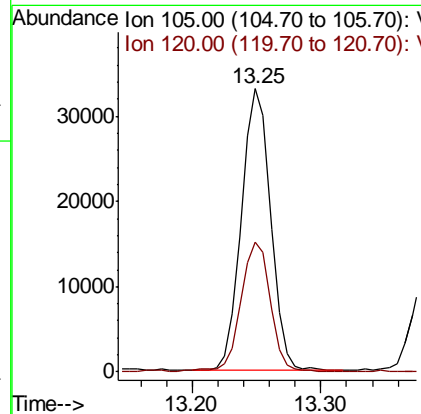
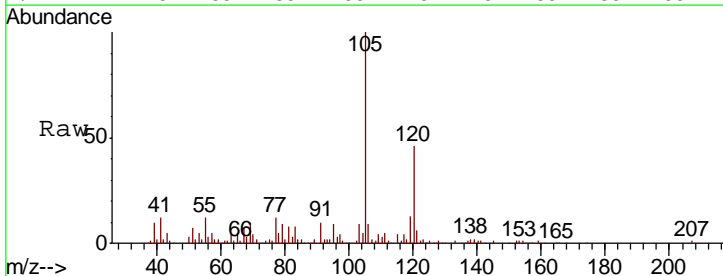
Manual Integrations  
 APPROVED

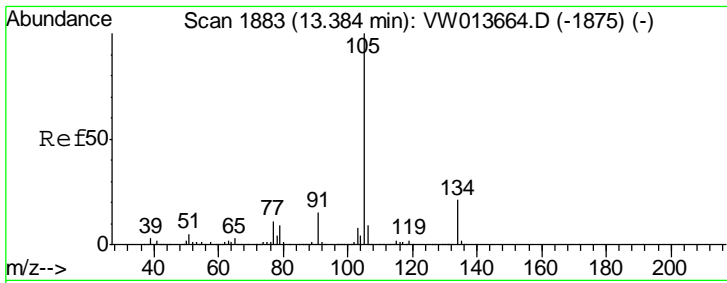
MMDadoda  
 11/12/2019 12:58:37 PM



#84  
 1,2,4-Trimethylbenzene  
 Concen: 5.052 ug/l  
 RT: 13.25 min Scan# 1861  
 Delta R.T. -0.00 min  
 Lab File: VW013943.D  
 Acq: 08 Nov 2019 14:37

Tgt Ion	Resp	Lower	Upper
105	51957		
120	46.7	23.5	70.5





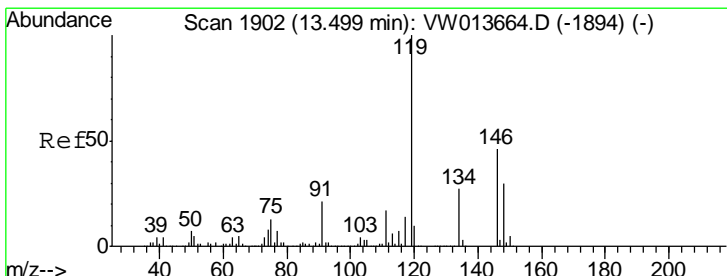
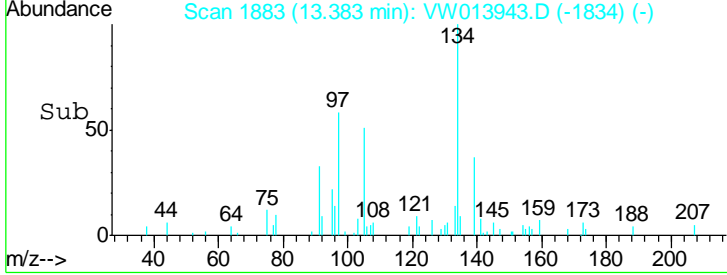
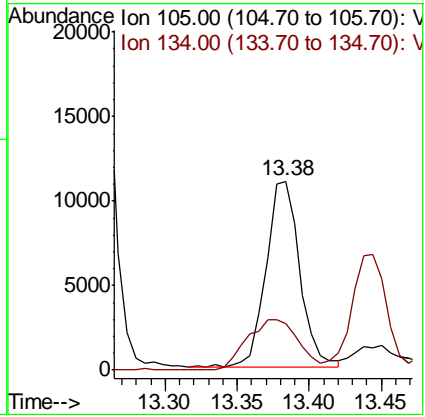
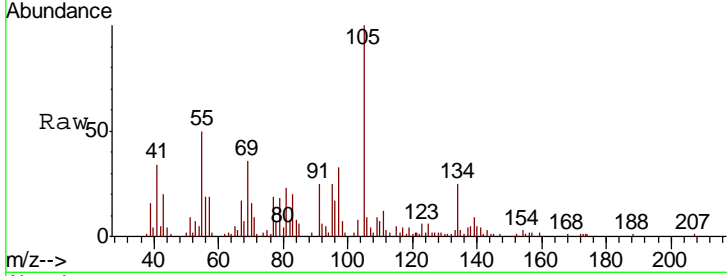
#85  
 sec-Butylbenzene  
 Concen: 1.413 ug/l  
 RT: 13.38 min Scan# 1883  
 Delta R.T. -0.00 min  
 Lab File: VW013943.D  
 Acq: 08 Nov 2019 14:37

Instrument : MSVOA\_W  
 Client Sampled : SB-18-(12-14)

Tgt Ion	Resp	Lower	Upper
105	100		
134	41.2	10.5	31.5#

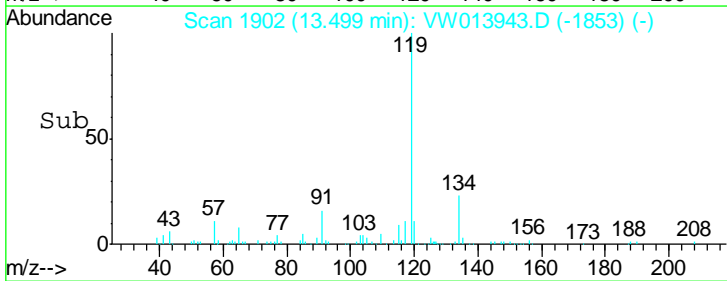
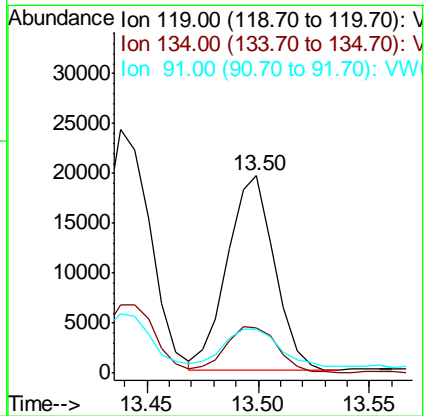
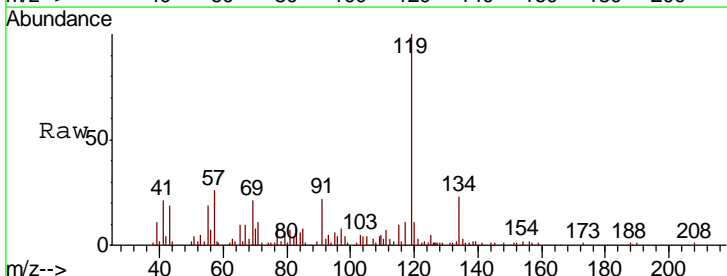
Manual Integrations  
 APPROVED

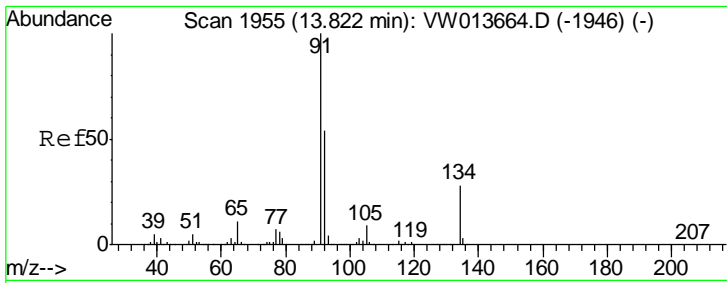
MMDadoda  
 11/12/2019 12:58:37 PM



#86  
 p-Isopropyltoluene  
 Concen: 2.450 ug/l  
 RT: 13.50 min Scan# 1902  
 Delta R.T. -0.00 min  
 Lab File: VW013943.D  
 Acq: 08 Nov 2019 14:37

Tgt Ion	Resp	Lower	Upper
119	100		
134	25.8	13.4	40.1
91	22.7	10.8	32.3



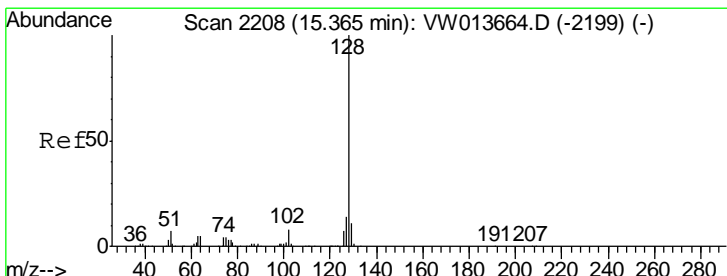
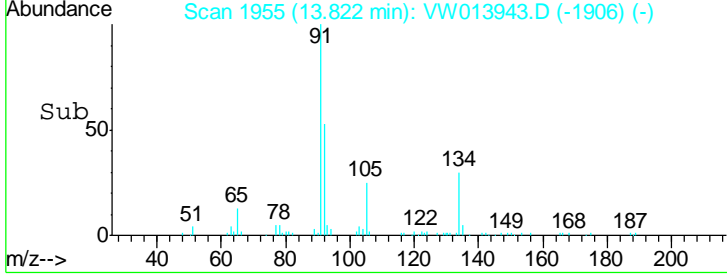
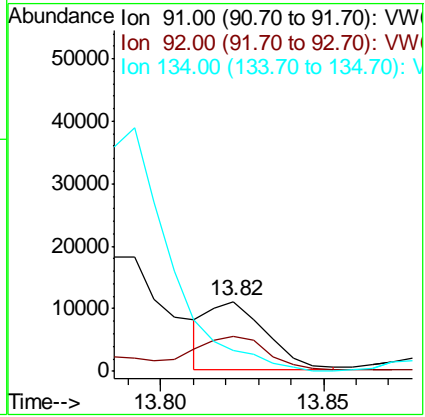
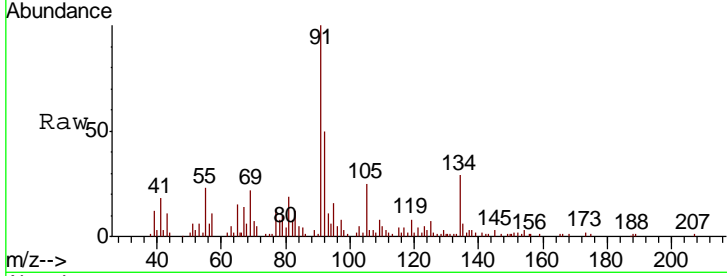


#89  
 n-Butylbenzene  
 Concen: 1.261 ug/l m  
 RT: 13.82 min Scan# 1955  
 Delta R.T. -0.00 min  
 Lab File: VW013943.D  
 Acq: 08 Nov 2019 14:37

Instrument : MSVOA\_W  
 Client Sampled : SB-18-(12-14)

Tgt Ion	Resp	Lower	Upper
91	100		
92	22.9	27.5	82.4#
134	508.3	14.0	41.9#

Manual Integrations  
**APPROVED**  
 MMDadoda  
 11/12/2019 12:58:37 PM



#95  
 Naphthalene  
 Concen: 7.768 ug/l  
 RT: 15.36 min Scan# 2208  
 Delta R.T. -0.00 min  
 Lab File: VW013943.D  
 Acq: 08 Nov 2019 14:37

Tgt Ion	Resp	Lower	Upper
128	100		
127	14.6	10.6	15.8
129	11.5	8.7	13.1

