

# Quantitation Report (QT Reviewed)

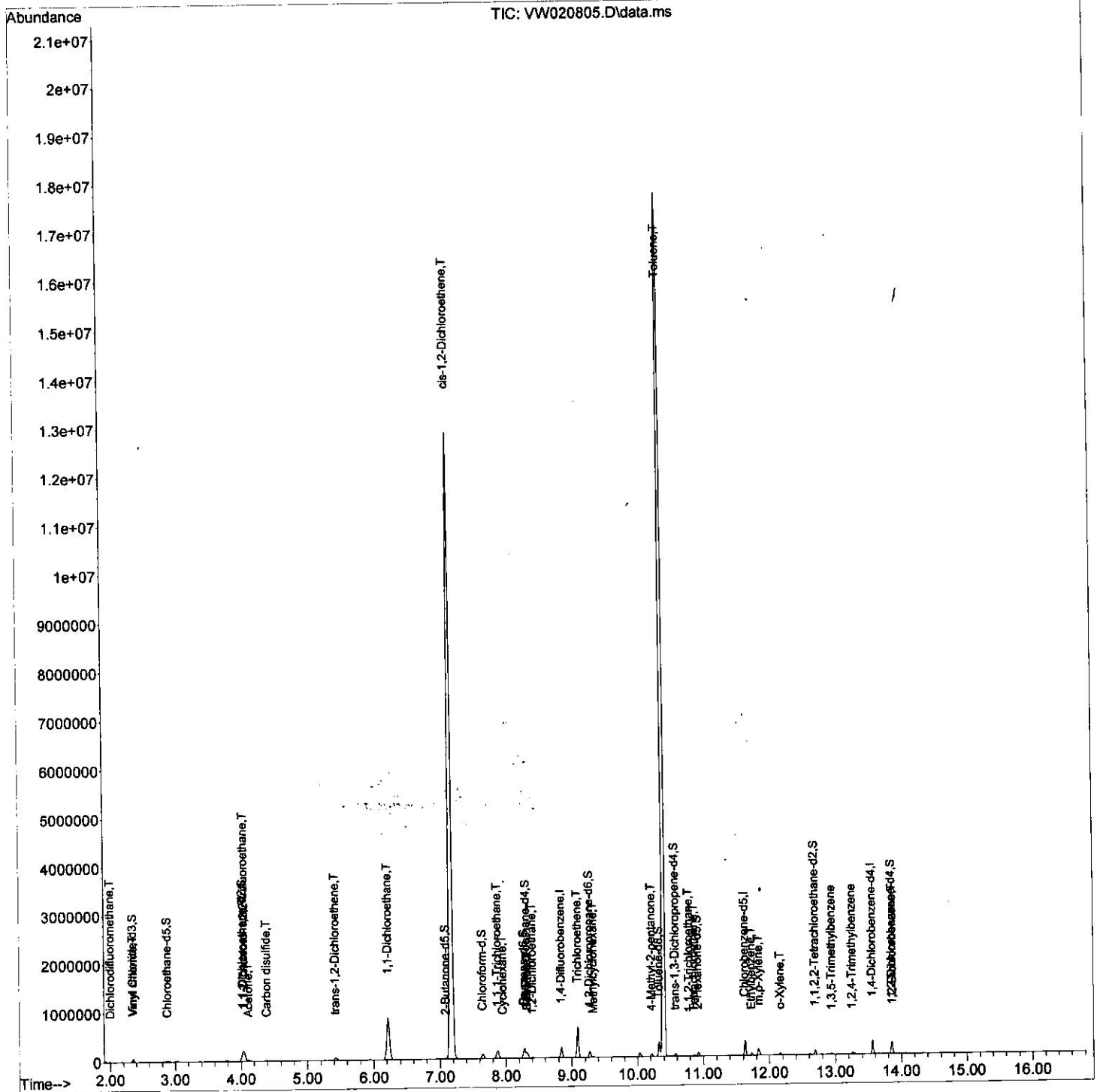
Data Path : Z:\voasrv\HPCHEM1\MSVOA\_W\Data\VW110821\  
 Data File : VW020805.D  
 Acq On : 08 Nov 2021 12:54  
 Operator : SY/VA  
 Sample : M4464-10  
 Misc : 3.25g/10.0mL/MSVOA\_W/SOIL  
 ALS Vial : 1 Sample Multiplier: 1

Instrument :  
 MSVOA\_W  
 Client Sampled :  
 GB7K8

Quant Time: Nov 15 01:02:18 2021  
 Quant Method : Z:\voasrv\HPCHEM1\MSVOA\_W\Method\SFAMWLM110621SMA.M  
 Quant Title : SFAM01.0  
 QLast Update : Mon Nov 15 00:29:21 2021  
 Response via : Initial Calibration

Manual Integrations APPROVED

Reviewed By : Semsettin Yesilyurt 11/15/2021  
 Supervised By : Mahesh Dadoda 11/17/2021



# Quantitation Report (Qedit)

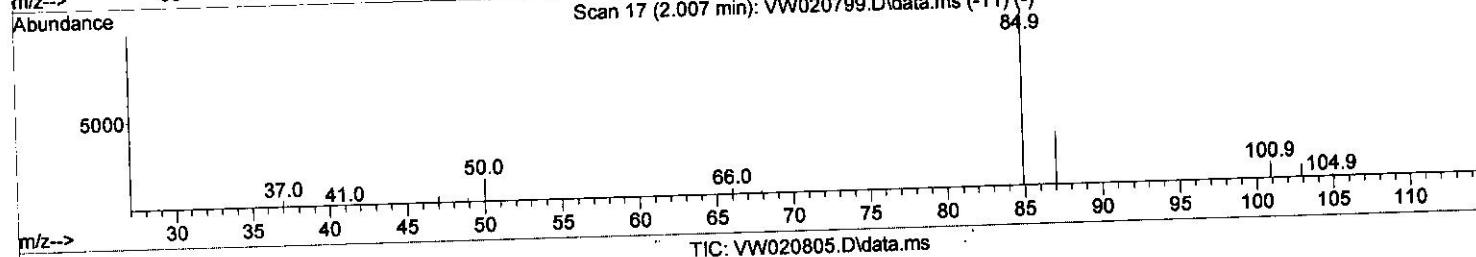
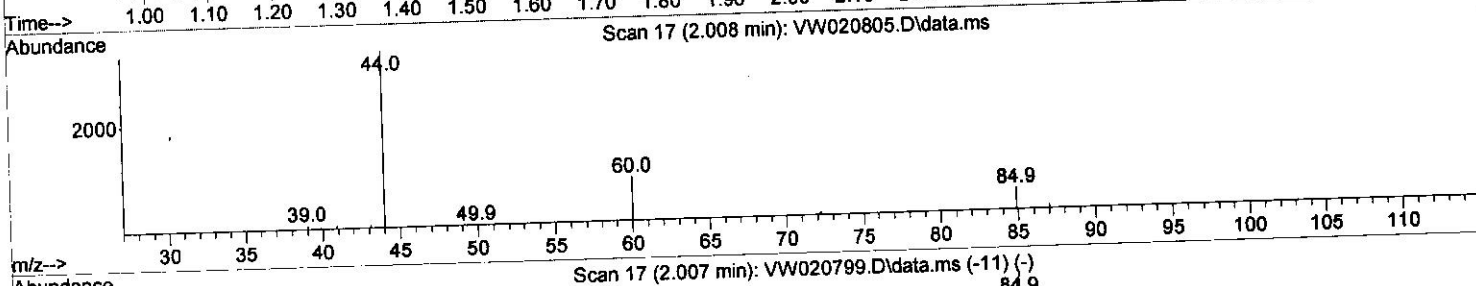
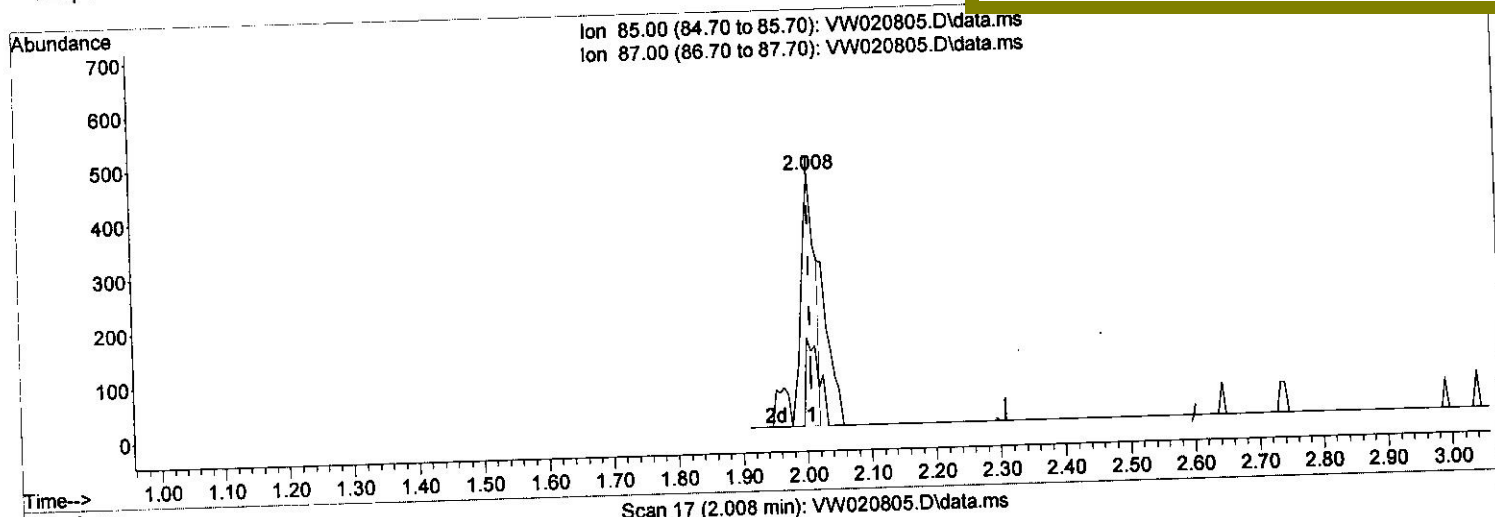
Data Path : Z:\voasrv\HPCHEM1\MSVOA\_W\Data\VW110821\  
 Data File : VW020805.D  
 Acq On : 08 Nov 2021 12:54  
 Operator : SY/VA  
 Sample : M4464-10  
 Misc : 3.25g/10.0mL/MSVOA\_W/SOIL  
 ALS Vial : 1 Sample Multiplier: 1

Instrument :  
 MSVOA\_W  
 Client Sampled :  
 GB7K8

Quant Time: Nov 15 01:02:18 2021  
 Quant Method : Z:\voasrv\HPCHEM1\MSVOA\_W\Method\SFAMWLM110621SMA.M  
 Quant Title : SFAM01.0  
 QLast Update : Mon Nov 15 00:29:21 2021  
 Response via : Initial Calibration

Manual Integrations APPROVED

Reviewed By : Semsettin Yesilyurt 11/15/2021  
 Supervised By : Mahesh Dadoda 11/17/2021



(2) Dichlorodifluoromethane (T)

2.008min (+ 0.000) 0.91 ug/L

response 697

Ion	Exp%	Act%
85.00	100.00	100.00
87.00	32.20	31.99
0.00	0.00	0.00
0.00	0.00	0.00

# Quantitation Report (Qedit)

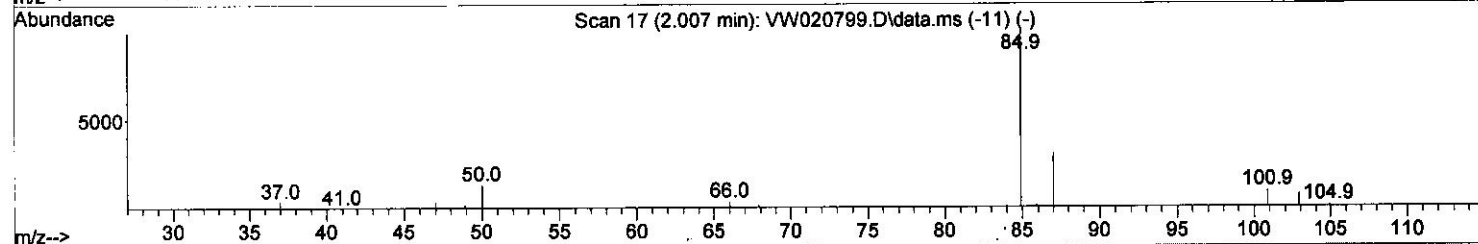
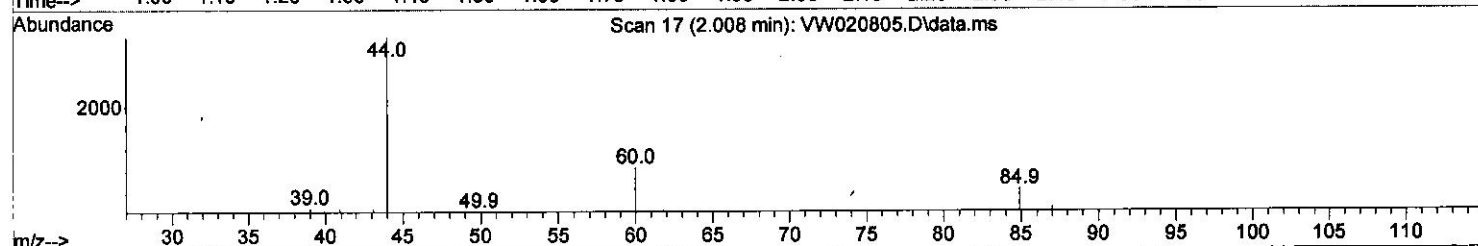
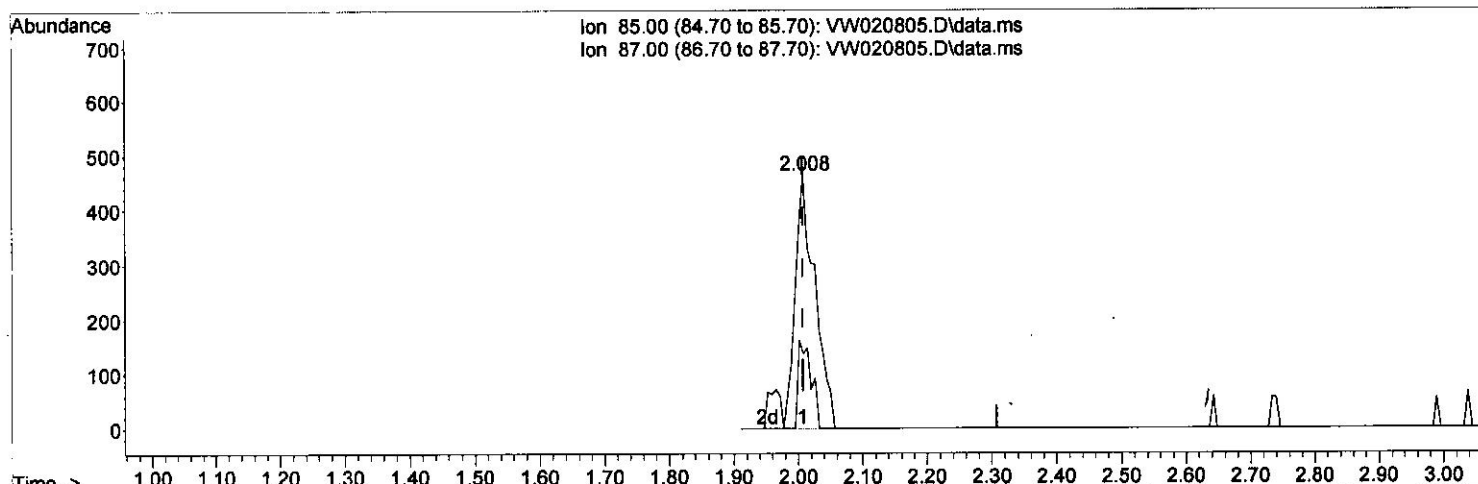
Data Path : Z:\voasrv\HPCHEM1\MSVOA\_W\Data\VW110821\  
 Data File : VW020805.D  
 Acq On : 08 Nov 2021 12:54  
 Operator : SY/VA  
 Sample : M4464-10  
 Misc : 3.25g/10.0mL/MSVOA\_W/SOIL  
 ALS Vial : 1 Sample Multiplier: 1

Instrument :  
 MSVOA\_W  
 Client Sampled :  
 GB7K8

Quant Time: Nov 15 01:02:18 2021  
 Quant Method : Z:\voasrv\HPCHEM1\MSVOA\_W\Method\SFAMWLM110621SMA.M  
 Quant Title : SFAM01.0  
 QLast Update : Mon Nov 15 00:29:21 2021  
 Response via : Initial Calibration

Manual Integrations APPROVED

Reviewed By : Semsettin Yesilyurt 11/15/2021  
 Supervised By : Mahesh Dadoda 11/17/2021



TIC: VW020805.D\data.ms

(2) Dichlorodifluoromethane (T)

2.008min (+ 0.000) 1.28 ug/L m

response 980

Ion	Exp%	Act%
85.00	100.00	100.00
87.00	32.20	22.76#
0.00	0.00	0.00
0.00	0.00	0.00

# Quantitation Report (Qedit)

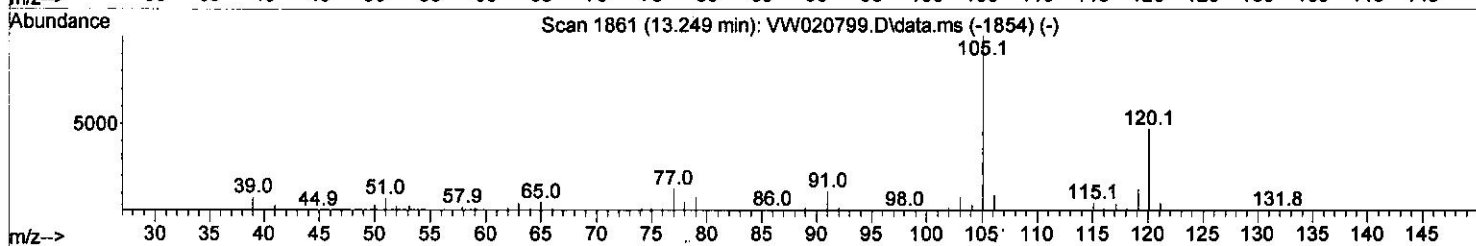
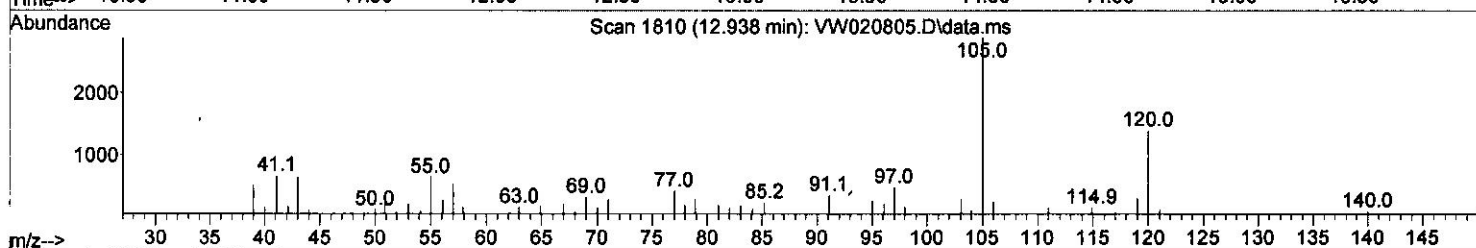
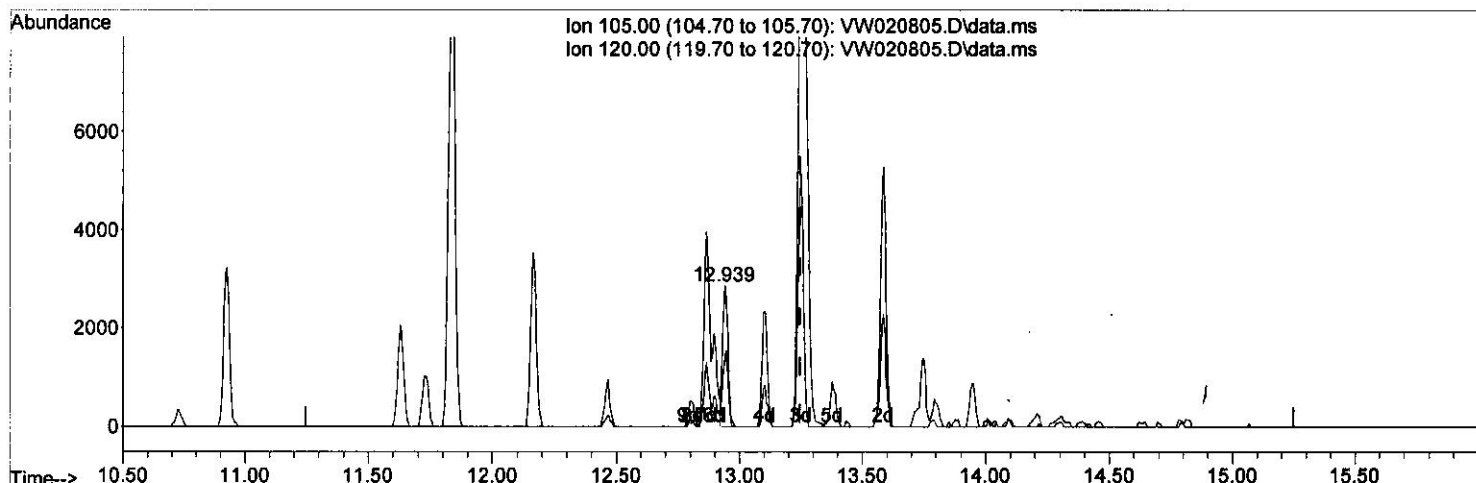
Data Path : Z:\voasrv\HPCHEM1\MSVOA\_W\Data\VW110821\  
 Data File : VW020805.D  
 Acq On : 08 Nov 2021 12:54  
 Operator : SY/VA  
 Sample : M4464-10  
 Misc : 3.25g/10.0mL/MSVOA\_W/SOIL  
 ALS Vial : 1 Sample Multiplier: 1

Instrument :  
 MSVOA\_W  
 Client Sampled :  
 GB7K8

Quant Time: Nov 15 01:02:18 2021  
 Quant Method : Z:\voasrv\HPCHEM1\MSVOA\_W\Method\SFAMWLM110621SMA.M  
 Quant Title : SFAM01.0  
 QLast Update : Mon Nov 15 00:29:21 2021  
 Response via : Initial Calibration

Manual IntegrationsAPPROVED

Reviewed By :Semsettin Yesilyurt 11/15/2021  
 Supervised By :Mahesh Dadoda 11/17/2021



TIC: VW020805.D\data.ms

(63) 1,2,4-Trimethylbenzene

12.938min (-0.311) 0.51 ug/L

response 4412

Ion	Exp%	Act%
105.00	100.00	100.00
120.00	43.80	51.75
0.00	0.00	0.00
0.00	0.00	0.00

# Quantitation Report (Qedit)

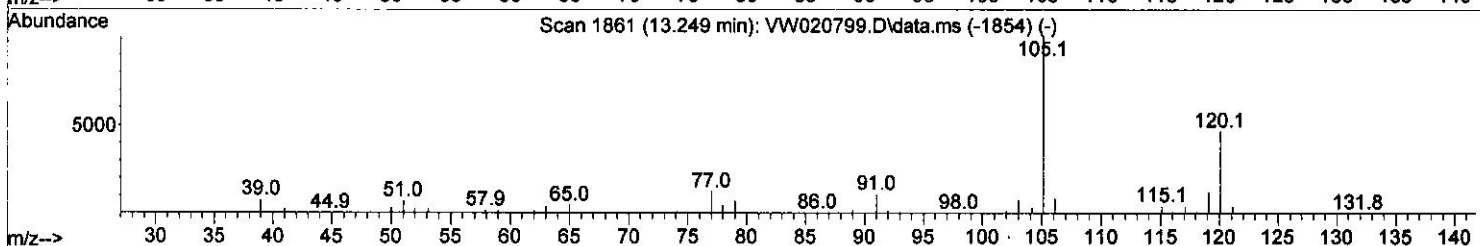
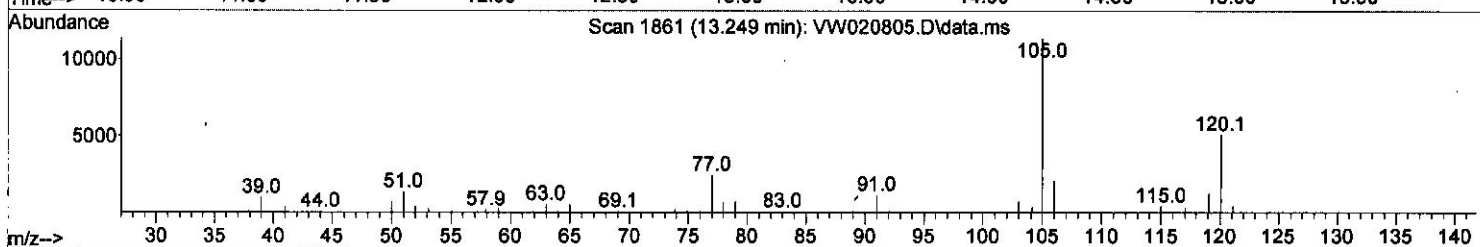
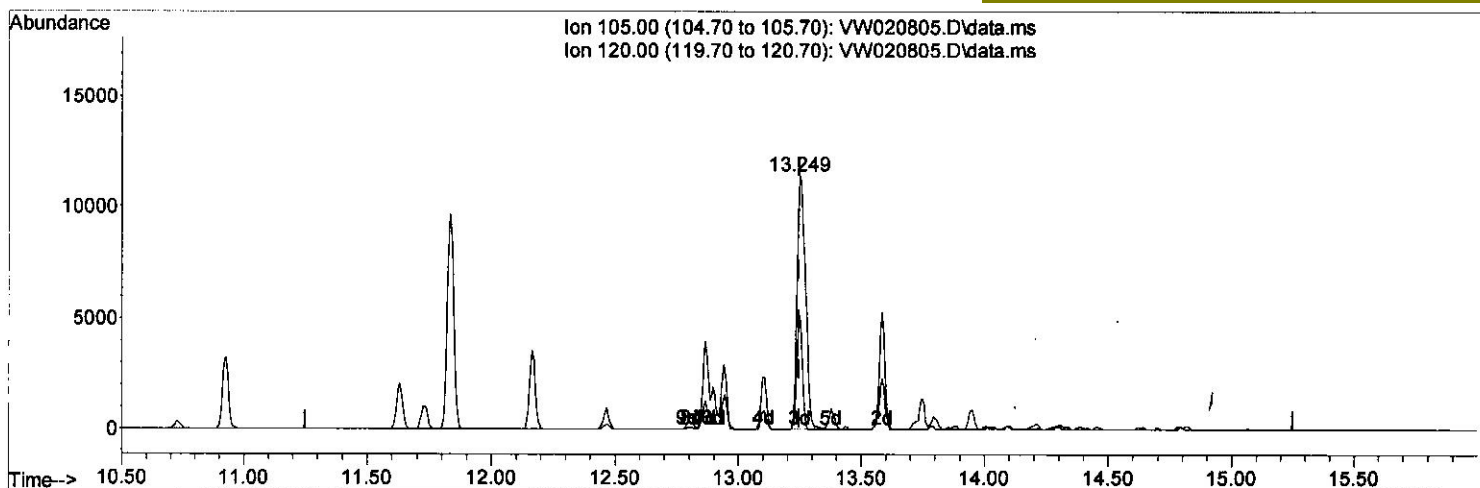
Data Path : Z:\voasrv\HPCHEM1\MSVOA\_W\Data\VW110821\  
 Data File : VW020805.D  
 Acq On : 08 Nov 2021 12:54  
 Operator : SY/VA  
 Sample : M4464-10  
 Misc : 3.25g/10.0mL/MSVOA\_W/SOIL  
 ALS Vial : 1 Sample Multiplier: 1

Instrument :  
 MSVOA\_W  
 Client Sampled :  
 GB7K8

Quant Time: Nov 15 01:02:18 2021  
 Quant Method : Z:\voasrv\HPCHEM1\MSVOA\_W\Method\SFAMWLM110621SMA.M  
 Quant Title : SFAM01.0  
 QLast Update : Mon Nov 15 00:29:21 2021  
 Response via : Initial Calibration

Manual IntegrationsAPPROVED

Reviewed By :Semsettin Yesilyurt 11/15/2021  
 Supervised By :Mahesh Dadoda 11/17/2021



TIC: VW020805.D\data.ms

(63) 1,2,4-Trimethylbenzene

13.249min (+ 0.000) 3.11 ug/L m

response 26702

Ion	Exp%	Act%
105.00	100.00	100.00
120.00	43.80	8.55#
0.00	0.00	0.00
0.00	0.00	0.00



## Quantitation Report (QT Reviewed)

Data Path : Z:\voasrv\HPCHEM1\MSVOA\_W\Data\VW110821\  
 Data File : VW020805.D  
 Acq On : 08 Nov 2021 12:54  
 Operator : SY/VA  
 Sample : M4464-10  
 Misc : 3.25g/10.0mL/MSVOA\_W/SOIL  
 ALS Vial : 1 Sample Multiplier: 1

Instrument :  
 MSVOA\_W  
 Client Sampled :  
 GB7K8

Quant Time: Nov 15 01:02:18 2021  
 Quant Method : Z:\voasrv\HPCHEM1\MSVOA\_W\Method\SFAMWLM110621SMA.M  
 Quant Title : SFAM01.0  
 QLast Update : Mon Nov 15 00:29:21 2021  
 Response via : Initial Calibration

Manual Integrations APPROVED

Reviewed By : Semsettin Yesilyurt 11/15/2021  
 Supervised By : Mahesh Dadoda 11/17/2021

Compound	R.T.	QIon	Response	Conc	Units	Dev(Min)
Internal Standards						
1) 1,4-Difluorobenzene	8.842	114	187883	25.000	ug/L	0.00
28) Chlorobenzene-d5	11.628	117	168813	25.000	ug/L	0.00
58) 1,4-Dichlorobenzene-d4	13.554	152	72896	25.000	ug/L	0.00

System Monitoring Compounds						
4) Vinyl Chloride-d3	2.349	65	53132	30.077	ug/L	0.00
Spiked Amount	25.000	Range 30 - 150	Recovery	=	120.320%	
7) Chloroethane-d5	2.879	69	30473	30.295	ug/L	0.00
Spiked Amount	25.000	Range 30 - 150	Recovery	=	121.200%	
11) 1,1-Dichloroethene-d2	4.025	63	114118	30.777	ug/L	0.00
Spiked Amount	25.000	Range 45 - 110	Recovery	=	123.120%#	
21) 2-Butanone-d5	7.086	46	28354	48.331	ug/L	0.01
Spiked Amount	50.000	Range 20 - 135	Recovery	=	96.660%	
24) Chloroform-d	7.647	84	100471	24.067	ug/L	0.00
Spiked Amount	25.000	Range 40 - 150	Recovery	=	96.280%	
26) 1,2-Dichloroethane-d4	8.305	65	54154	24.367	ug/L	0.00
Spiked Amount	25.000	Range 70 - 130	Recovery	=	97.480%	
32) Benzene-d6	8.275	84	204397	26.799	ug/L	0.00
Spiked Amount	25.000	Range 20 - 135	Recovery	=	107.200%	
36) 1,2-Dichloropropane-d6	9.275	67	60869	25.777	ug/L	0.00
Spiked Amount	25.000	Range 70 - 120	Recovery	=	103.120%	
41) Toluene-d8	10.323	98	206319	27.805	ug/L	0.00
Spiked Amount	25.000	Range 30 - 130	Recovery	=	111.200%	
43) trans-1,3-Dichloroprop...	10.579	79	30330	25.896	ug/L	0.00
Spiked Amount	25.000	Range 30 - 135	Recovery	=	103.600%	
47) 2-Hexanone-d5	10.921	63	24022	50.277	ug/L	0.00
Spiked Amount	50.000	Range 20 - 135	Recovery	=	100.560%	
56) 1,1,2,2-Tetrachloroeth...	12.689	84	45777	23.391	ug/L	0.00
Spiked Amount	25.000	Range 45 - 120	Recovery	=	93.560%	
66) 1,2-Dichlorobenzene-d4	13.853	152	60627	26.465	ug/L	0.00
Spiked Amount	25.000	Range 75 - 120	Recovery	=	105.840%	

Target Compounds						
2) Dichlorodifluoromethane	2.008	85	980m	1.279	ug/L	
5) Vinyl chloride	2.355	62	6631	2.293	ug/L #	41
10) 1,1,2-Trichloro-1,2,2-...	4.050	101	16435	6.516	ug/L #	82
12) 1,1-Dichloroethene	4.044	96	95325	39.657	ug/L #	70
13) Acetone	4.117	43	41019	75.130	ug/L	92
14) Carbon disulfide	4.385	76	14422	1.988	ug/L #	94
17) trans-1,2-Dichloroethene	5.422	96	30857	12.076	ug/L	89
19) 1,1-Dichloroethane	6.214	63	1248039	282.023	ug/L	99
20) cis-1,2-Dichloroethene	7.165	96	9014379	3346.734	ug/L #	63
27) 1,2-Dichloroethane	8.403	62	7132	2.391	ug/L #	91
29) Cyclohexane	7.952	56	2770	0.629	ug/L	95
30) 1,1,1-Trichloroethane	7.872	97	139242	34.709	ug/L	95
33) Benzene	8.323	78	63374	6.268	ug/L	100
34) Trichloroethene	9.092	95	205529	76.372	ug/L	95
35) Methylcyclohexane	9.329	83	2893	0.616	ug/L	97
40) 4-Methyl-2-pentanone	10.213	43	36990	23.645	ug/L #	94
42) Toluene	10.390	91	17630981	1621.711	ug/L	88
45) 1,1,2-Trichloroethane	10.786	97	1337	0.753	ug/L	89

Qvalue  
 11/15/21

# Quantitation Report (QT Reviewed)

Data Path : Z:\voasrv\HPCHEM1\MSVOA\_W\Data\VW110821\  
 Data File : VW020805.D  
 Acq On : 08 Nov 2021 12:54  
 Operator : SY/VA  
 Sample : M4464-10  
 Misc : 3.25g/10.0mL/MSVOA\_W/SOIL  
 ALS Vial : 1 Sample Multiplier: 1

Instrument :  
 MSVOA\_W  
 Client Sampled :  
 GB7K8

Quant Time: Nov 15 01:02:18 2021  
 Quant Method : Z:\voasrv\HPCHEM1\MSVOA\_W\Method\SFAMWLM110621SMA.M  
 Quant Title : SFAM01.0  
 QLast Update : Mon Nov 15 00:29:21 2021  
 Response via : Initial Calibration

## Manual Integrations APPROVED

Reviewed By : Semsettin Yesilyurt 11/15/2021  
 Supervised By : Mahesh Dadoda 11/17/2021

Compound	R.T.	QIon	Response	Conc	Units	Dev(Min)
46) Tetrachloroethene	10.866	164	5980	2.477	ug/L	96
52) Ethylbenzene	11.731	91	35438	2.909	ug/L	100
53) m,p-Xylene	11.835	106	39810	8.157	ug/L	97
54) o-Xylene	12.164	106	14293	3.092	ug/L	94
62) 1,3,5-Trimethylbenzene	12.938	105	4412	0.511	ug/L	93
63) 1,2,4-Trimethylbenzene	13.249	105	26702m	3.113	ug/L	
67) 1,2-Dichlorobenzene	13.865	146	3387	0.823	ug/L	94

m  
 11/22/21

(#) = qualifier out of range (m) = manual integration (+) = signals summed