

Data Path : Z:\VOASRV\HPCHEM1\MSVOA W\DATA\VW110918\  
 Data File : VW006790.D  
 Acq On : 09 Nov 2018 17:16  
 Operator : SY/AP  
 Sample : VW1109SBL01  
 Misc : 5.00G/5ML/MSVOA W/SOIL  
 ALS Vial : 13 Sample Multiplier: 1

Instrument :  
 MSVOA\_W  
 ClientSampleId :  
 VW1109SBL01

Quant Time: Nov 12 04:37:05 2018  
 Quant Method : Z:\VOASRV\HPCHEM1\MSVOA\_W\METHOD\82W110918S.M  
 Quant Title : SW846 8260  
 QLast Update : Mon Nov 12 00:52:45 2018  
 Response via : Initial Calibration

Internal Standards	R.T.	QIon	Response	Conc	Units	Dev(Min)
1) Pentafluorobenzene	7.96	168	310692	50.00	ug/l	0.00
34) 1,4-Difluorobenzene	8.85	114	408579	50.00	ug/l	0.00
63) Chlorobenzene-d5	11.63	117	382368	50.00	ug/l	0.00
72) 1,4-Dichlorobenzene-d4	13.57	152	207546	50.00	ug/l	0.00

## System Monitoring Compounds

33) 1,2-Dichloroethane-d4	8.31	65	110412	48.49	ug/l	0.00
Spiked Amount	50.000		Recovery	=	96.98%	
35) Dibromofluoromethane	7.89	113	114283	49.14	ug/l	0.00
Spiked Amount	50.000		Recovery	=	98.28%	
50) Toluene-d8	10.33	98	463079	47.31	ug/l	0.00
Spiked Amount	50.000		Recovery	=	94.62%	
62) 4-Bromofluorobenzene	12.62	95	159438	44.73	ug/l	0.00
Spiked Amount	50.000		Recovery	=	89.46%	

## Target Compounds

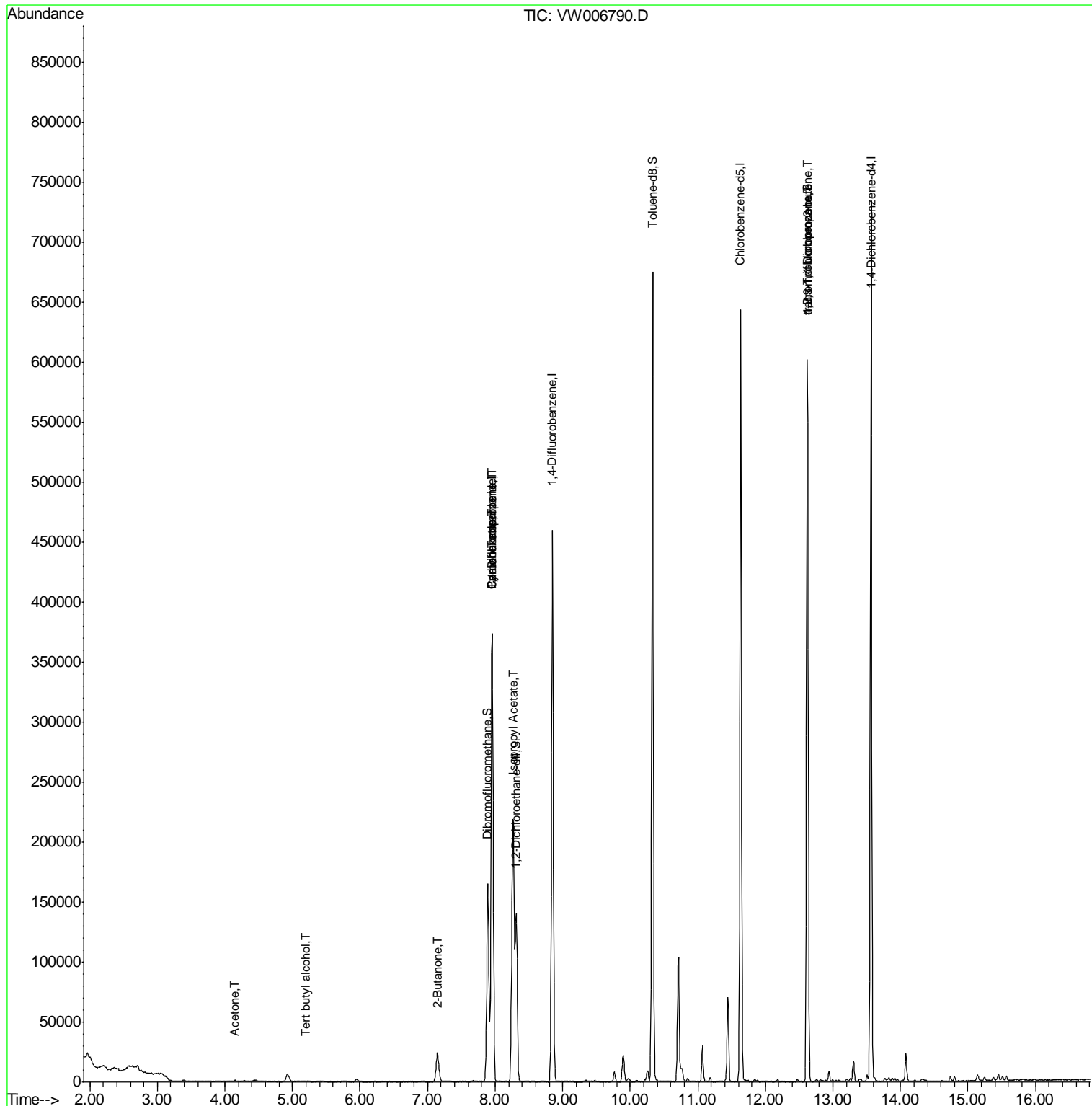
					Qvalue	
11) Tert butyl alcohol	5.20	59	503	3.356	ug/l #	71
16) Acetone	4.15	43	1961	5.950	ug/l #	86
20) Methylene Chloride	4.93	84	5369	Below Cal		96
25) 2-Butanone	7.14	43	1273	2.339	ug/l #	44
31) Cyclohexane	7.95	56	5231	1.231	ug/l #	15
36) 1,1-Dichloropropene	7.96	75	19276	5.199	ug/l #	47
38) Carbon Tetrachloride	7.96	117	25725	6.494	ug/l #	15
43) Isopropyl Acetate	8.26	43	4385	1.777	ug/l #	21
76) 1,2,3-Trichloropropane	12.62	75	77414	51.148	ug/l #	100
81) trans-1,4-Dichloro-2-buten	12.62	75	77414	135.992	ug/l #	12

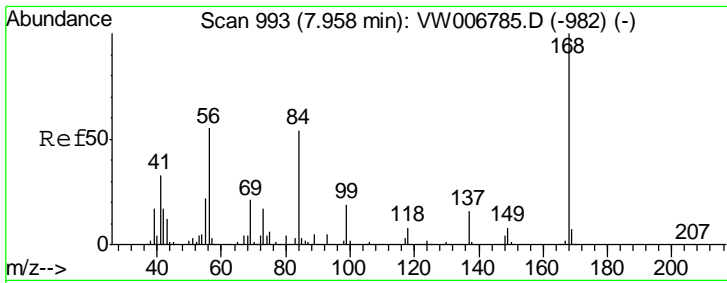
(#) = qualifier out of range (m) = manual integration (+) = signals summed

Data Path : Z:\VOASRV\HPCHEM1\MSVOA W\DATA\VW110918\  
 Data File : VW006790.D  
 Acq On : 09 Nov 2018 17:16  
 Operator : SY/AP  
 Sample : VW1109SBL01  
 Misc : 5.00G/5ML/MSVOA W/SOIL  
 ALS Vial : 13 Sample Multiplier: 1

Instrument :  
 MSVOA\_W  
 ClientSampleId :  
 VW1109SBL01

Quant Time: Nov 12 04:37:05 2018  
 Quant Method : Z:\VOASRV\HPCHEM1\MSVOA\_W\METHOD\82W110918S.M  
 Quant Title : SW846 8260  
 QLast Update : Mon Nov 12 00:52:45 2018  
 Response via : Initial Calibration

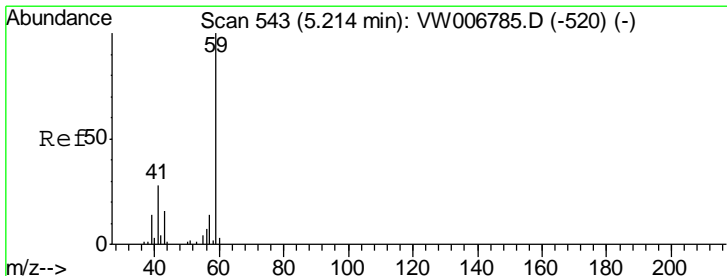
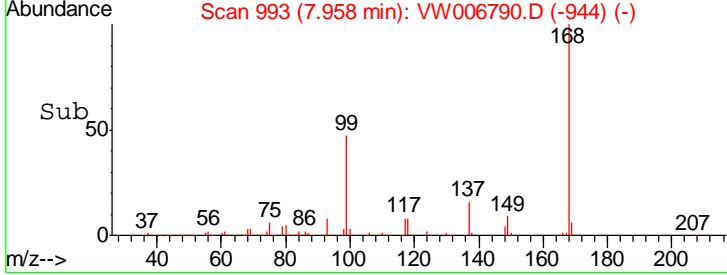
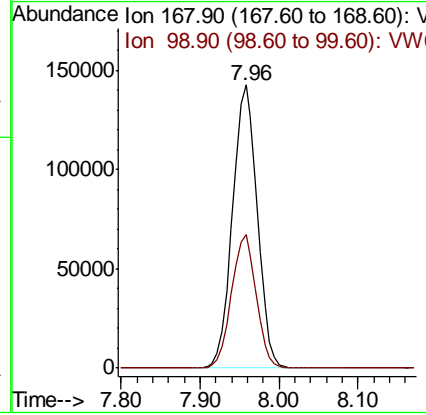
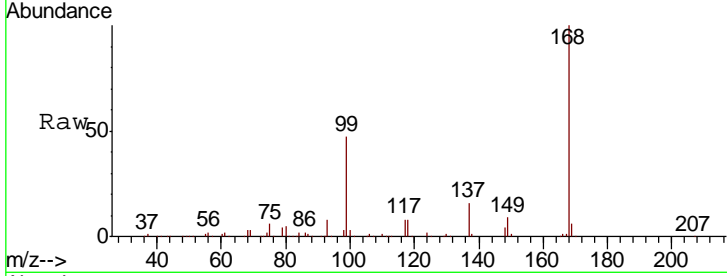




#1  
 Pentafluorobenzene  
 Concen: 50.000 ug/l  
 RT: 7.96 min Scan# 993  
 Delta R.T. 0.00 min  
 Lab File: VW006790.D  
 Acq: 09 Nov 2018 17:16

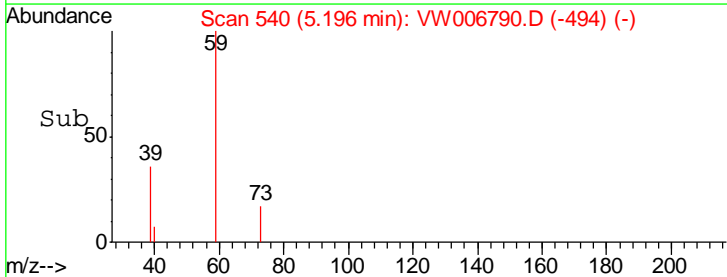
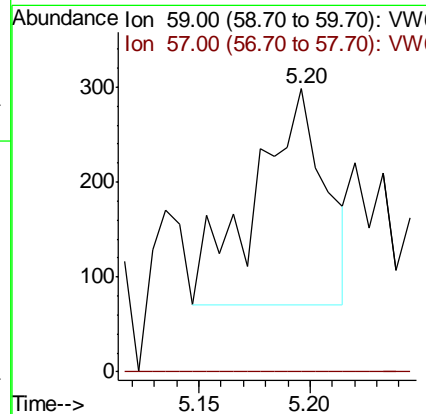
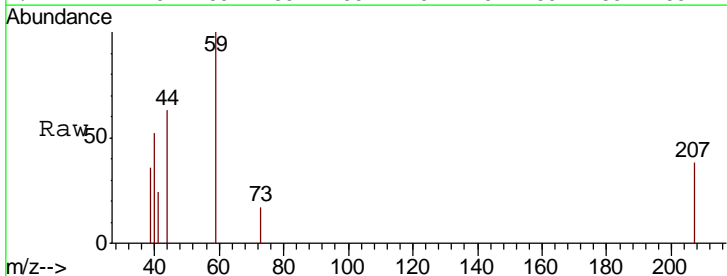
**Instrument :**  
 MSVOA\_W  
**ClientSampled :**  
 VW1109SBL01

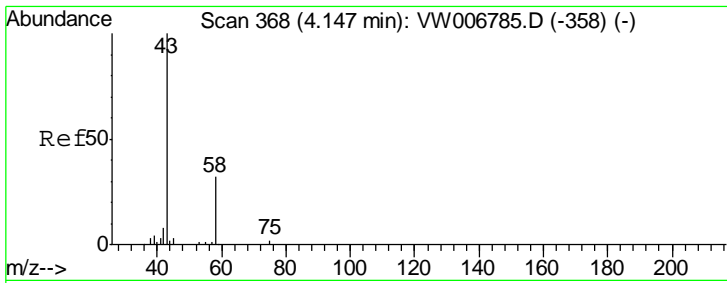
Tgt Ion	Resp	Lower	Upper
168	100		
99	47.1	36.8	55.2



#11  
 Tert butyl alcohol  
 Concen: 3.356 ug/l  
 RT: 5.20 min Scan# 540  
 Delta R.T. -0.02 min  
 Lab File: VW006790.D  
 Acq: 09 Nov 2018 17:16

Tgt Ion	Resp	Lower	Upper
59	100		
57	0.0	8.7	13.1#

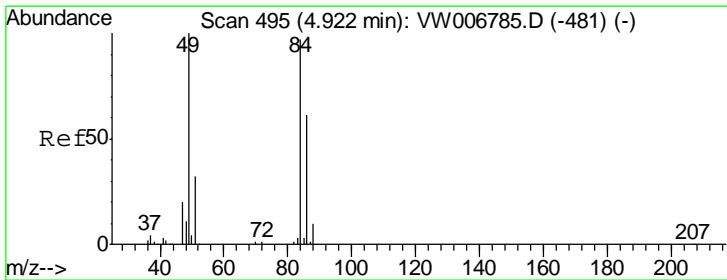
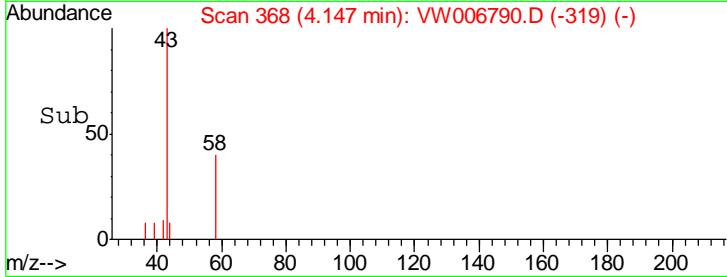
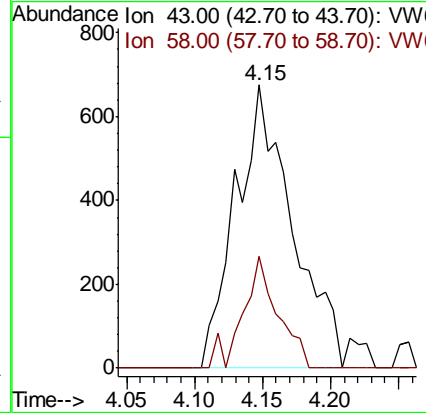
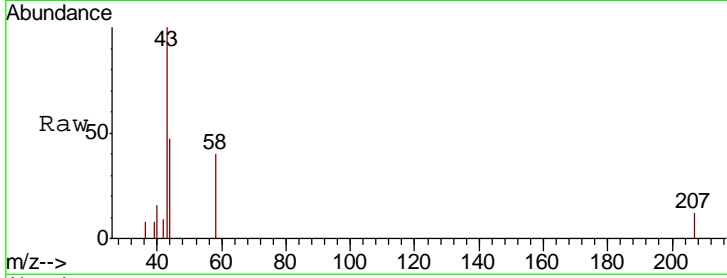




#16  
 Acetone  
 Concen: 5.950 ug/l  
 RT: 4.15 min Scan# 368  
 Delta R.T. 0.00 min  
 Lab File: VW006790.D  
 Acq: 09 Nov 2018 17:16

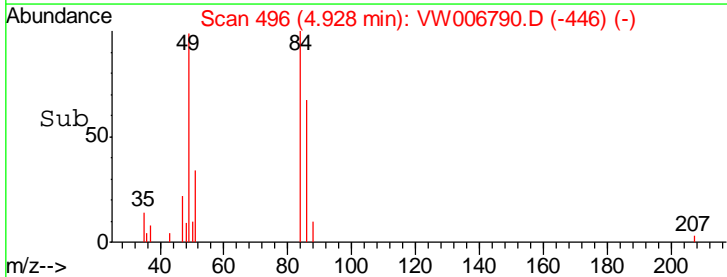
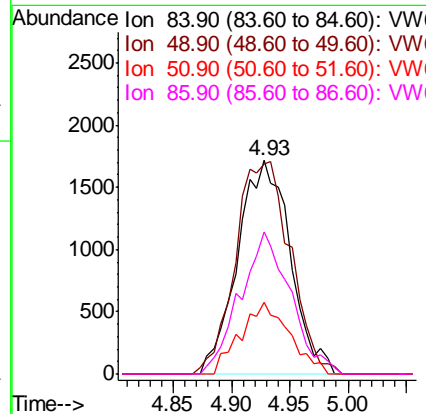
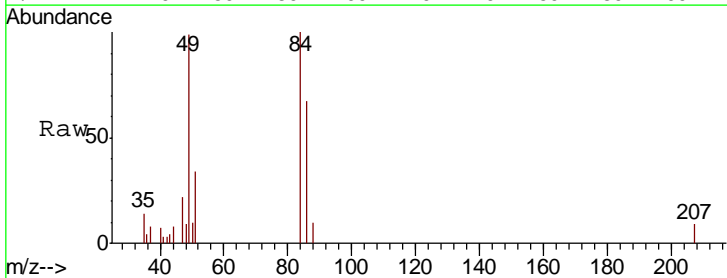
Instrument :  
 MSVOA\_W  
 ClientSampleId :  
 VW1109SBL01

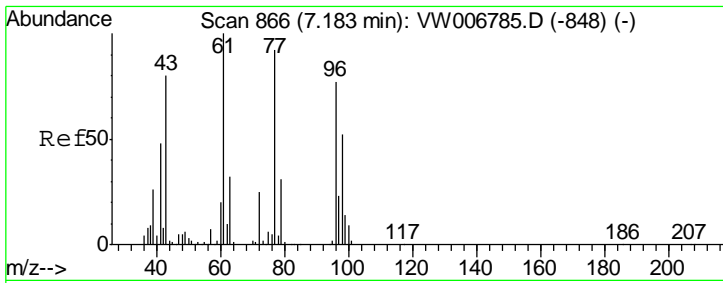
Tgt Ion: 43 Resp: 1961  
 Ion Ratio Lower Upper  
 43 100  
 58 39.6 25.4 38.0#



#20  
 Methylene Chloride  
 Concen: Below Cal  
 RT: 4.93 min Scan# 496  
 Delta R.T. 0.01 min  
 Lab File: VW006790.D  
 Acq: 09 Nov 2018 17:16

Tgt Ion: 84 Resp: 5369  
 Ion Ratio Lower Upper  
 84 100  
 49 98.5 82.4 123.6  
 51 33.5 26.7 40.1  
 86 66.8 50.4 75.6

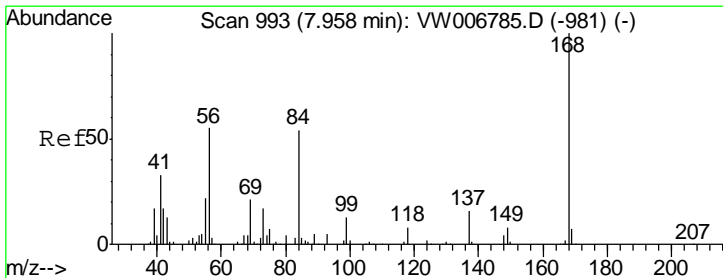
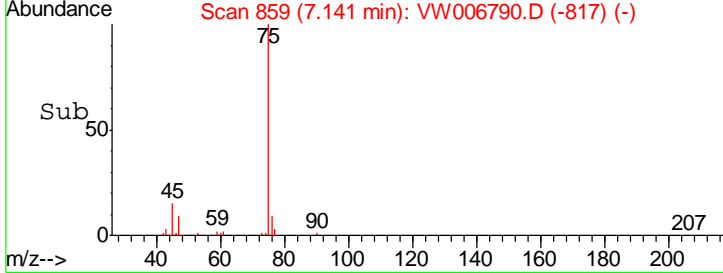
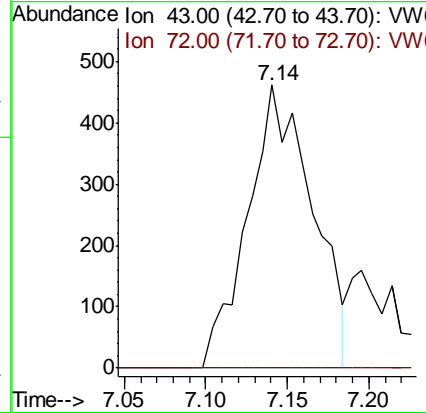
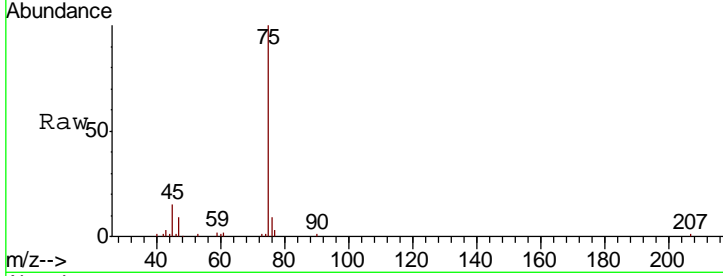




#25  
 2-Butanone  
 Concen: 2.339 ug/l  
 RT: 7.14 min Scan# 859  
 Delta R.T. -0.04 min  
 Lab File: VW006790.D  
 Acq: 09 Nov 2018 17:16

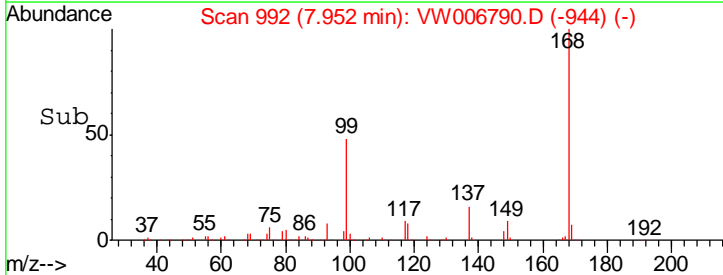
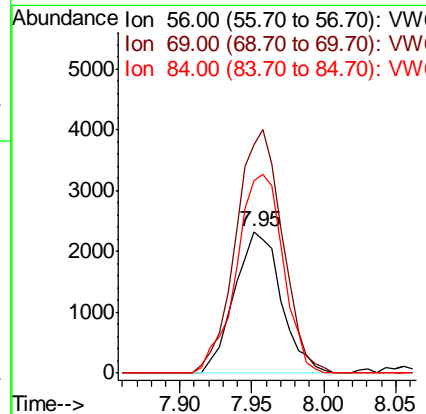
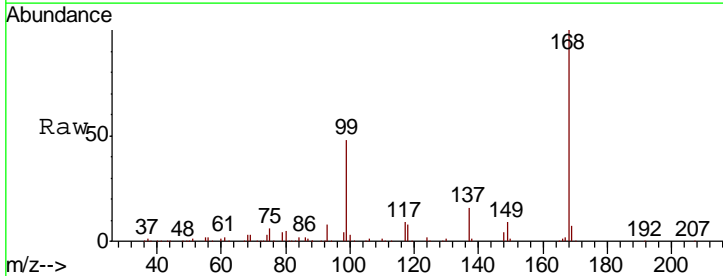
Instrument :  
 MSVOA\_W  
 ClientSampled :  
 VW1109SBL01

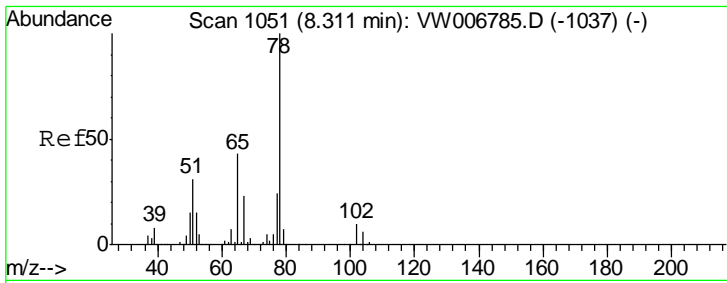
Tgt Ion: 43 Resp: 1273  
 Ion Ratio Lower Upper  
 43 100  
 72 0.0 24.5 36.7#



#31  
 Cyclohexane  
 Concen: 1.231 ug/l  
 RT: 7.95 min Scan# 992  
 Delta R.T. -0.01 min  
 Lab File: VW006790.D  
 Acq: 09 Nov 2018 17:16

Tgt Ion: 56 Resp: 5231  
 Ion Ratio Lower Upper  
 56 100  
 69 161.7 30.3 45.5#  
 84 136.0 78.2 117.2#

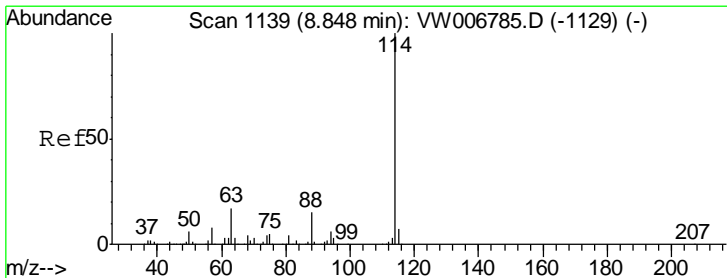
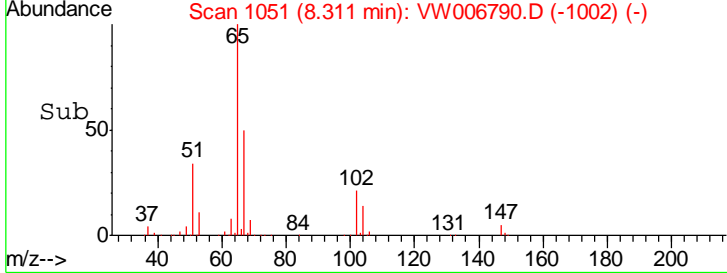
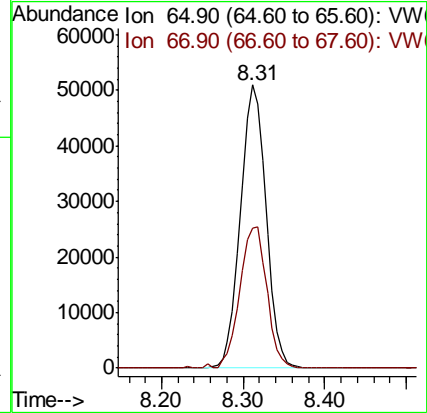
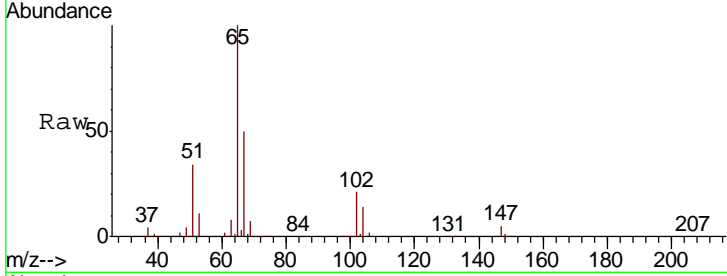




#33  
 1,2-Dichloroethane-d4  
 Concen: 48.490 ug/l  
 RT: 8.31 min Scan# 1051  
 Delta R.T. 0.00 min  
 Lab File: VW006790.D  
 Acq: 09 Nov 2018 17:16

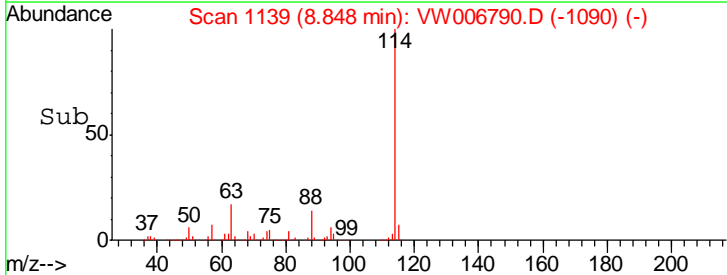
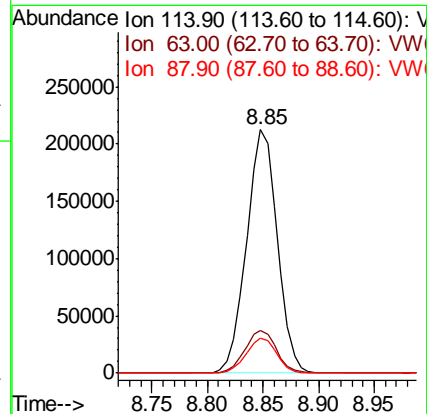
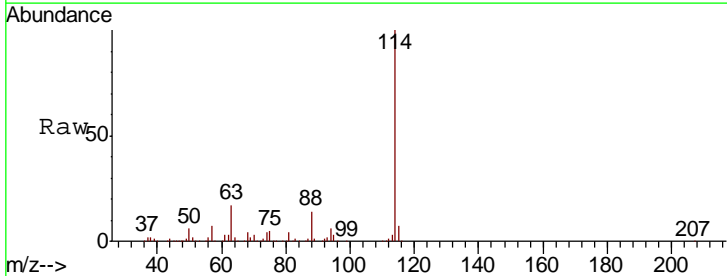
Instrument :  
 MSVOA\_W  
 ClientSampled :  
 VW1109SBL01

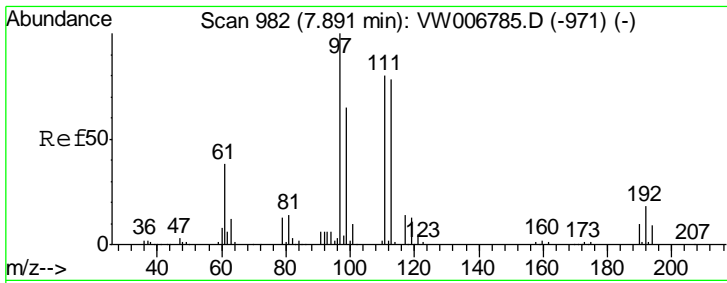
Tgt Ion: 65 Resp: 110412  
 Ion Ratio Lower Upper  
 65 100  
 67 52.4 0.0 107.2



#34  
 1,4-Difluorobenzene  
 Concen: 50.000 ug/l  
 RT: 8.85 min Scan# 1139  
 Delta R.T. 0.00 min  
 Lab File: VW006790.D  
 Acq: 09 Nov 2018 17:16

Tgt Ion: 114 Resp: 408579  
 Ion Ratio Lower Upper  
 114 100  
 63 17.3 0.0 34.0  
 88 14.2 0.0 29.2

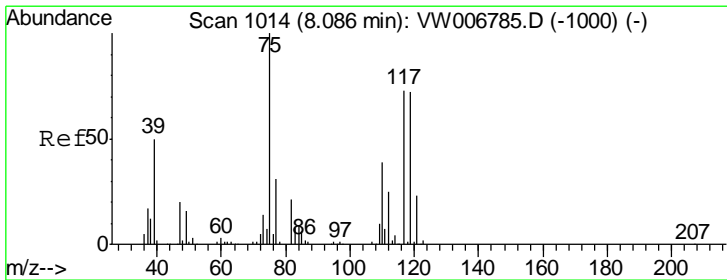
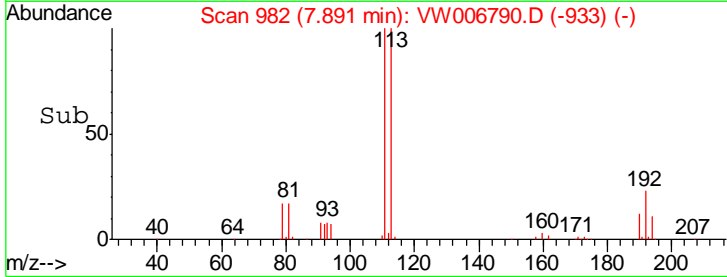
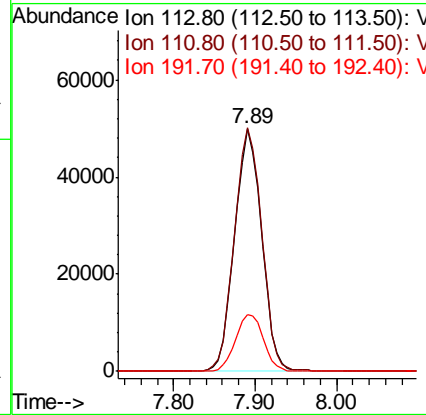
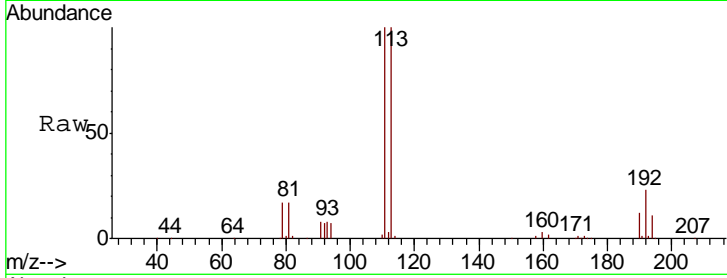




#35  
 Dibromofluoromethane  
 Concen: 49.142 ug/l  
 RT: 7.89 min Scan# 982  
 Delta R.T. 0.00 min  
 Lab File: VW006790.D  
 Acq: 09 Nov 2018 17:16

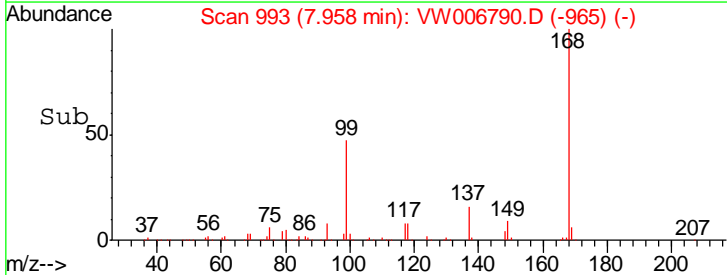
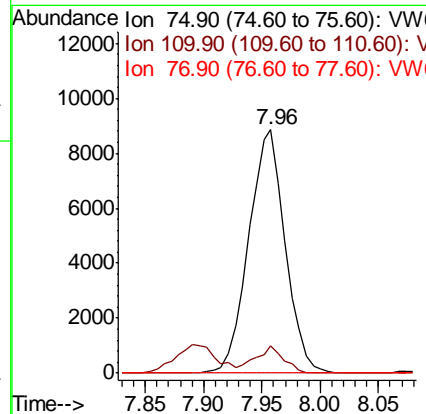
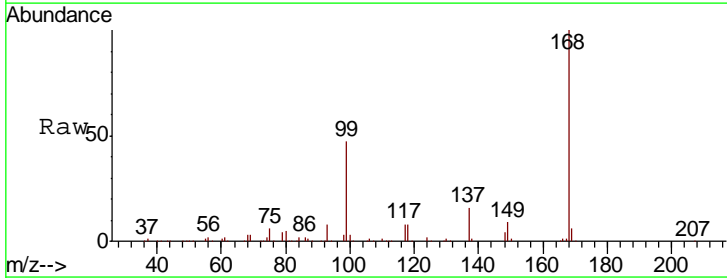
Instrument :  
 MSVOA\_W  
 ClientSampled :  
 VW1109SBL01

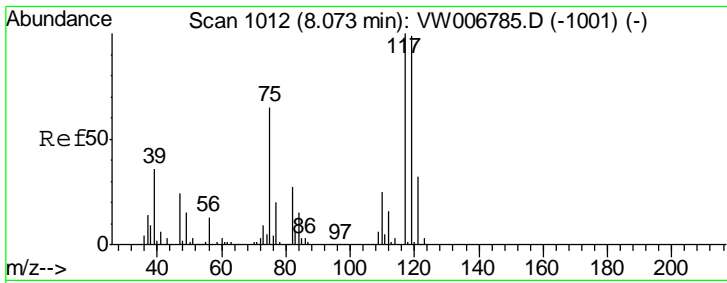
Tgt Ion	Resp	Lower	Upper
113	100		
111	101.8	81.4	122.2
192	24.1	19.1	28.7



#36  
 1,1-Dichloropropene  
 Concen: 5.199 ug/l  
 RT: 7.96 min Scan# 993  
 Delta R.T. -0.13 min  
 Lab File: VW006790.D  
 Acq: 09 Nov 2018 17:16

Tgt Ion	Resp	Lower	Upper
75	100		
110	8.8	19.6	58.7#
77	0.0	24.9	37.3#



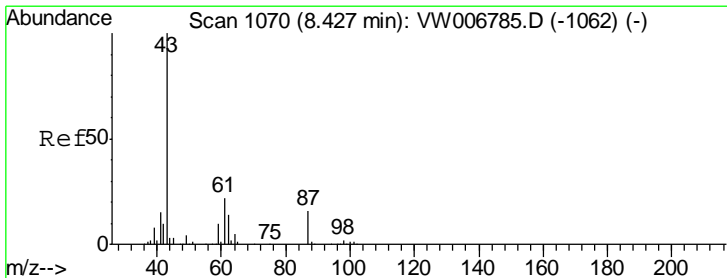
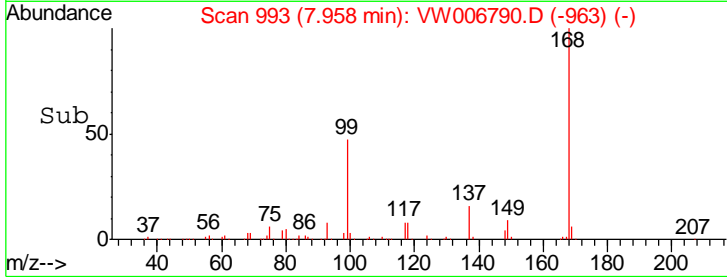
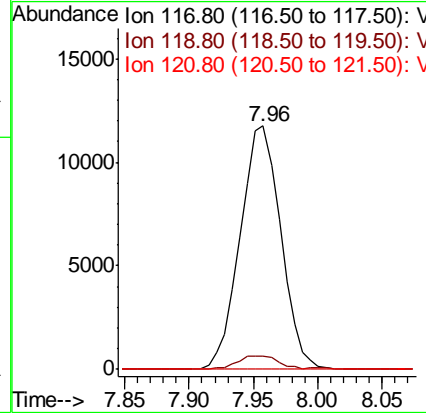
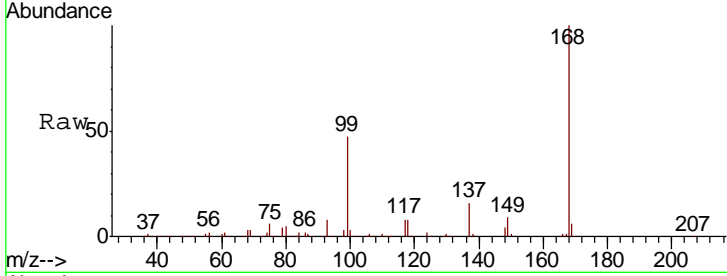


#38  
 Carbon Tetrachloride  
 Concen: 6.494 ug/l  
 RT: 7.96 min Scan# 993  
 Delta R.T. -0.12 min  
 Lab File: VW006790.D  
 Acq: 09 Nov 2018 17:16

Instrument :  
 MSVOA\_W  
 ClientSampled :  
 VW1109SBL01

Tgt Ion: 117 Resp: 25725

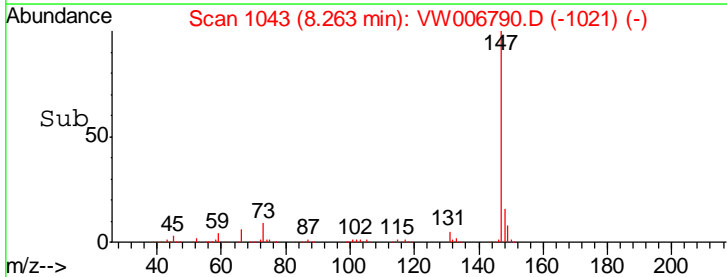
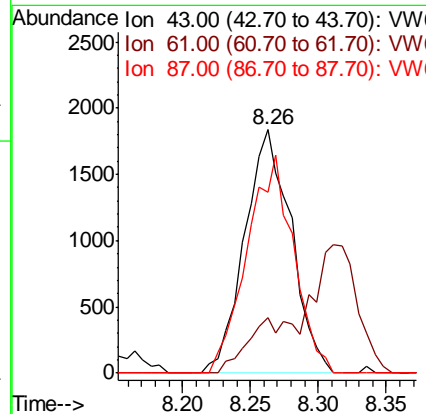
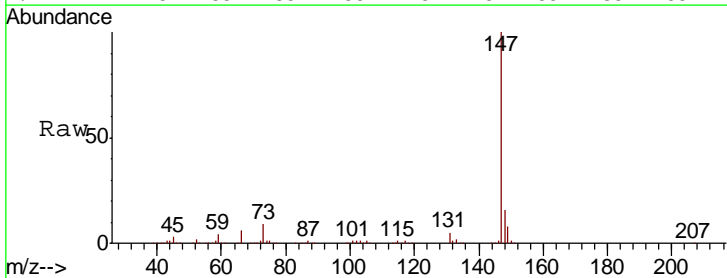
Ion	Ratio	Lower	Upper
117	100		
119	5.3	78.9	118.3#
121	0.0	25.3	37.9#



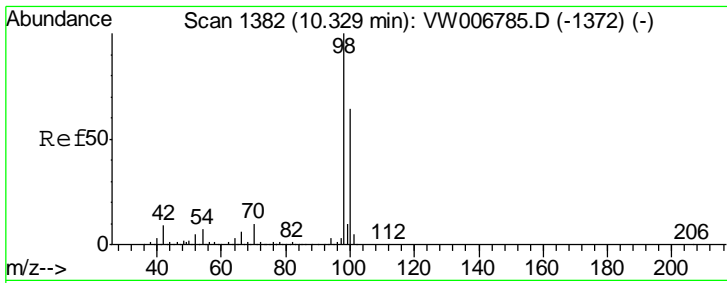
#43  
 Isopropyl Acetate  
 Concen: 1.777 ug/l  
 RT: 8.26 min Scan# 1043  
 Delta R.T. -0.16 min  
 Lab File: VW006790.D  
 Acq: 09 Nov 2018 17:16

Tgt Ion: 43 Resp: 4385

Ion	Ratio	Lower	Upper
43	100		
61	14.3	26.5	39.7#
87	89.8	12.8	19.2#



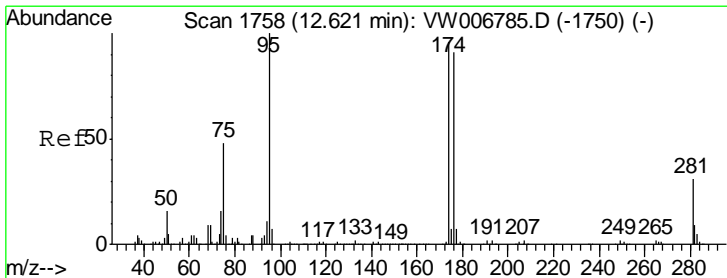
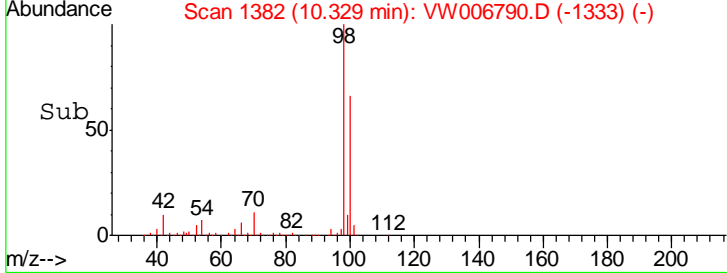
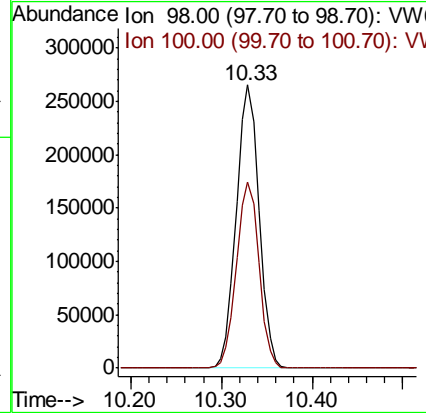
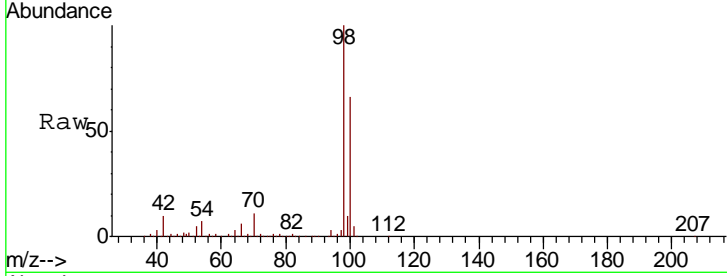




#50  
 Toluene-d8  
 Concen: 47.314 ug/l  
 RT: 10.33 min Scan# 1382  
 Delta R.T. 0.00 min  
 Lab File: VW006790.D  
 Acq: 09 Nov 2018 17:16

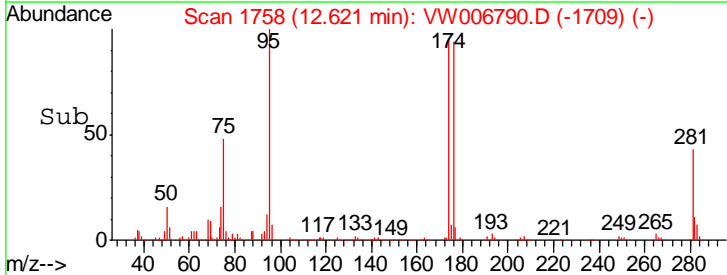
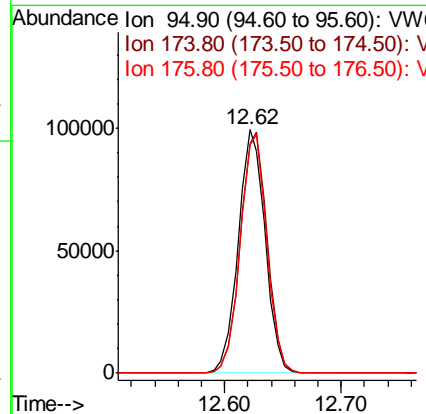
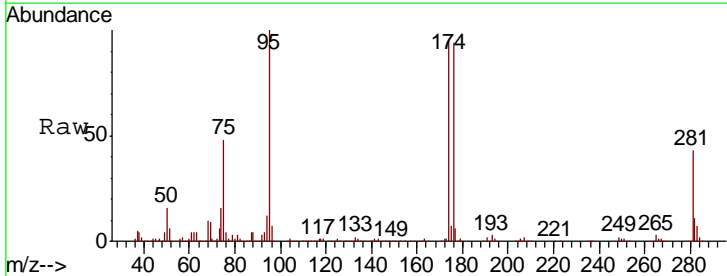
Instrument : MSVOA\_W  
 ClientSampled : VW1109SBL01

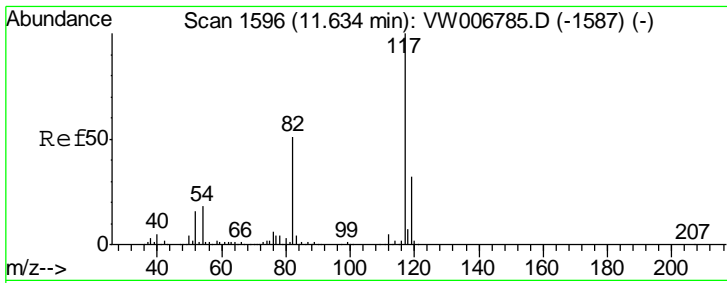
Tgt Ion	Resp	Lower	Upper
98	100		
100	65.1	51.4	77.0



#62  
 4-Bromofluorobenzene  
 Concen: 44.729 ug/l  
 RT: 12.62 min Scan# 1758  
 Delta R.T. 0.00 min  
 Lab File: VW006790.D  
 Acq: 09 Nov 2018 17:16

Tgt Ion	Resp	Lower	Upper
95	100		
174	99.4	0.0	196.2
176	97.2	0.0	190.8

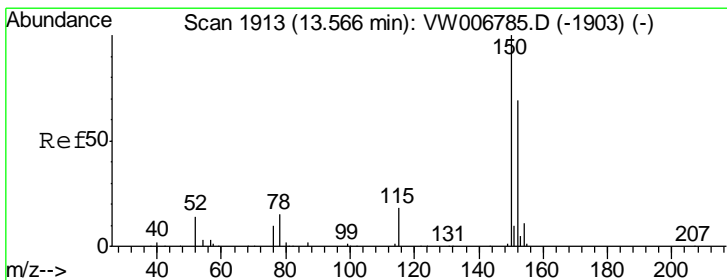
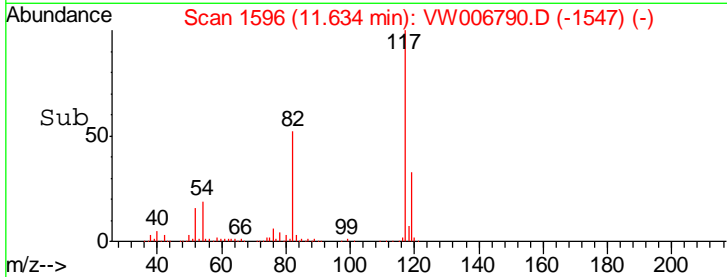
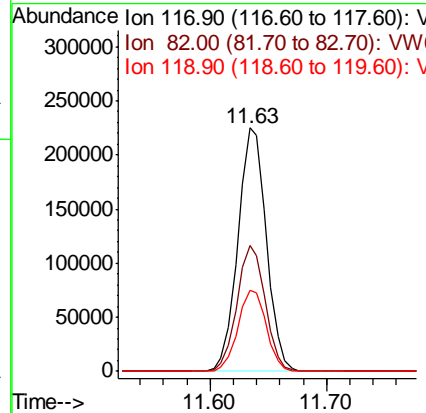
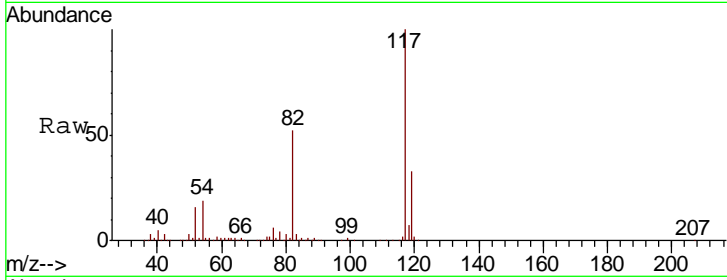




#63  
 Chlorobenzene-d5  
 Concen: 50.000 ug/l  
 RT: 11.63 min Scan# 1596  
 Delta R.T. 0.00 min  
 Lab File: VW006790.D  
 Acq: 09 Nov 2018 17:16

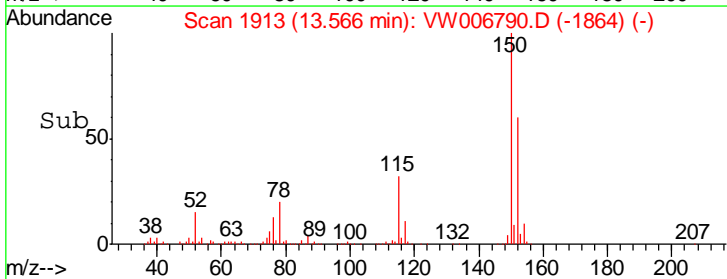
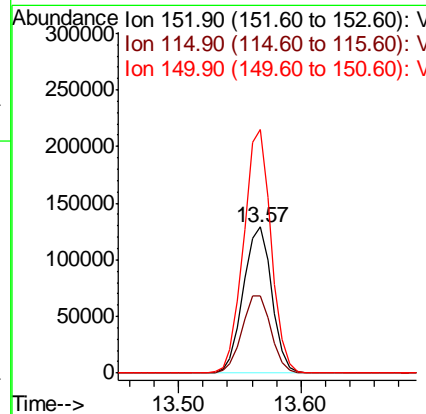
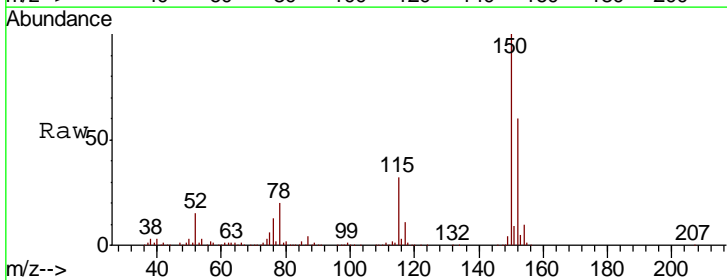
Instrument :  
 MSVOA\_W  
 ClientSampled :  
 VW1109SBL01

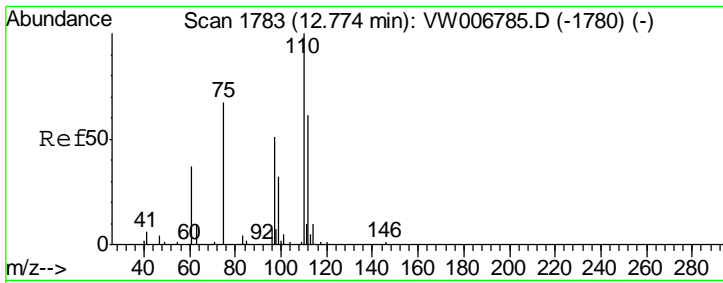
Tgt Ion	Resp	Lower	Upper
117	382368		
82	51.7	40.9	61.3
119	33.2	25.8	38.8



#72  
 1,4-Dichlorobenzene-d4  
 Concen: 50.000 ug/l  
 RT: 13.57 min Scan# 1913  
 Delta R.T. 0.00 min  
 Lab File: VW006790.D  
 Acq: 09 Nov 2018 17:16

Tgt Ion	Resp	Lower	Upper
152	207546		
152	100		
115	53.8	26.7	80.0
150	160.2	0.0	348.0

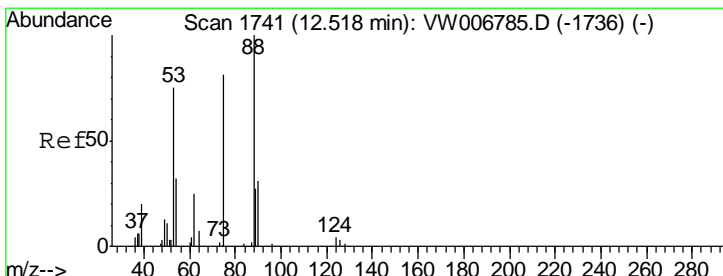
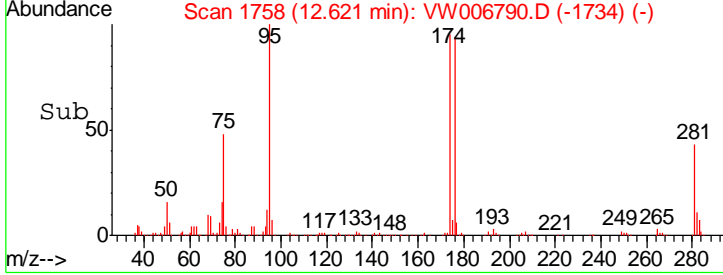
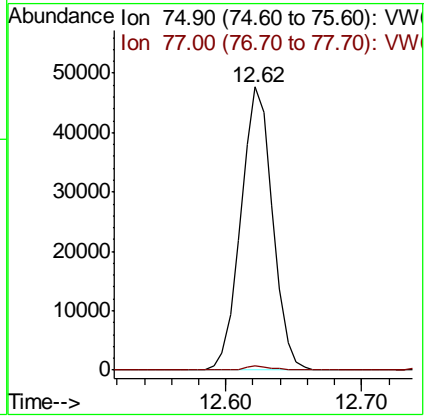
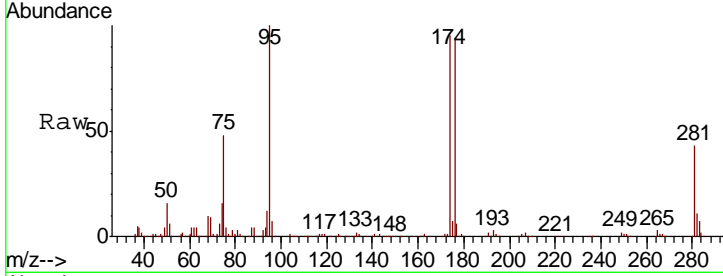




#76  
 1,2,3-Trichloropropane  
 Concen: 51.148 ug/l  
 RT: 12.62 min Scan# 1758  
 Delta R.T. -0.15 min  
 Lab File: VW006790.D  
 Acq: 09 Nov 2018 17:16

**Instrument :**  
 MSVOA\_W  
**ClientSampled :**  
 VW1109SBL01

Tgt Ion	Resp	Lower	Upper
75	100		
77	1.3	0.0	0.0#



#81  
 trans-1,4-Dichloro-2-butene  
 Concen: 135.992 ug/l  
 RT: 12.62 min Scan# 1758  
 Delta R.T. 0.10 min  
 Lab File: VW006790.D  
 Acq: 09 Nov 2018 17:16

Tgt Ion	Resp	Lower	Upper
75	100		
53	0.0	74.0	111.0#
89	0.4	38.1	57.1#

