

Data Path : Z:\VOASRV\HPCHEM1\MSVOA W\DATA\VW111320\
 Data File : VW017211.D
 Acq On : 13 Nov 2020 14:39
 Operator : SY/VA
 Sample : VIBLK
 Misc : 5.00G/10ML/MSVOA W/SOIL
 ALS Vial : 1 Sample Multiplier: 1

Instrument :
 MSVOA_W
 ClientSampleId :
 VIBLK10

Quant Time: Nov 16 14:16:10 2020
 Quant Method : Z:\VOASRV\HPCHEM1\MSVOA_W\METHOD\SOM2WLM110420S.M
 Quant Title : VOC Analysis
 QLast Update : Mon Nov 16 11:48:24 2020
 Response via : Initial Calibration

Internal Standards	R.T.	QIon	Response	Conc	Units	Dev(Min)
1) 1,4-Difluorobenzene	8.84	114	432767	25.00	ug/L	0.00
28) Chlorobenzene-d5	11.63	117	398119	25.00	ug/L	0.00
60) 1,4-Dichlorobenzene-d4	13.56	152	190039	25.00	ug/L	0.00

System Monitoring Compounds

4) Vinyl Chloride-d3	2.35	65	114855	21.07	ug/L	0.00
Spiked Amount	25.000	Range	30 - 150	Recovery	=	84.28%
7) Chloroethane-d5	2.89	69	100851	24.01	ug/L	0.00
Spiked Amount	25.000	Range	30 - 150	Recovery	=	96.04%
10) 1,1-Dichloroethene-d2	4.02	63	167763	17.21	ug/L	0.00
Spiked Amount	25.000	Range	45 - 110	Recovery	=	68.84%
20) 2-Butanone-d5	7.08	46	57971	47.56	ug/L	0.00
Spiked Amount	50.000	Range	20 - 135	Recovery	=	95.12%
24) Chloroform-d	7.65	84	262135	25.95	ug/L	0.00
Spiked Amount	25.000	Range	40 - 150	Recovery	=	103.80%
26) 1,2-Dichloroethane-d4	8.31	65	137133	27.30	ug/L	0.00
Spiked Amount	25.000	Range	70 - 130	Recovery	=	109.20%
29) Benzene-d6	8.27	84	500489	24.69	ug/L	0.00
Spiked Amount	25.000	Range	20 - 135	Recovery	=	98.76%
33) 1,2-Dichloropropane-d6	9.27	67	140745	25.10	ug/L	0.00
Spiked Amount	25.000	Range	70 - 120	Recovery	=	100.40%
37) Toluene-d8	10.32	98	468324	24.50	ug/L	0.00
Spiked Amount	25.000	Range	30 - 130	Recovery	=	98.00%
38) trans-1,3-Dichloropropene-	10.58	79	59143	23.39	ug/L	0.00
Spiked Amount	25.000	Range	30 - 135	Recovery	=	93.56%
39) 2-Hexanone-d5	10.93	63	48092	49.14	ug/L	0.00
Spiked Amount	50.000	Range	20 - 135	Recovery	=	98.28%
48) 1,1,2,2-Tetrachloroethane-	12.69	84	123719	25.33	ug/L	0.00
Spiked Amount	25.000	Range	45 - 120	Recovery	=	101.32%
61) 1,2-Dichlorobenzene-d4	13.85	152	182548	27.26	ug/L	0.00
Spiked Amount	25.000	Range	75 - 120	Recovery	=	109.04%

Target Compounds

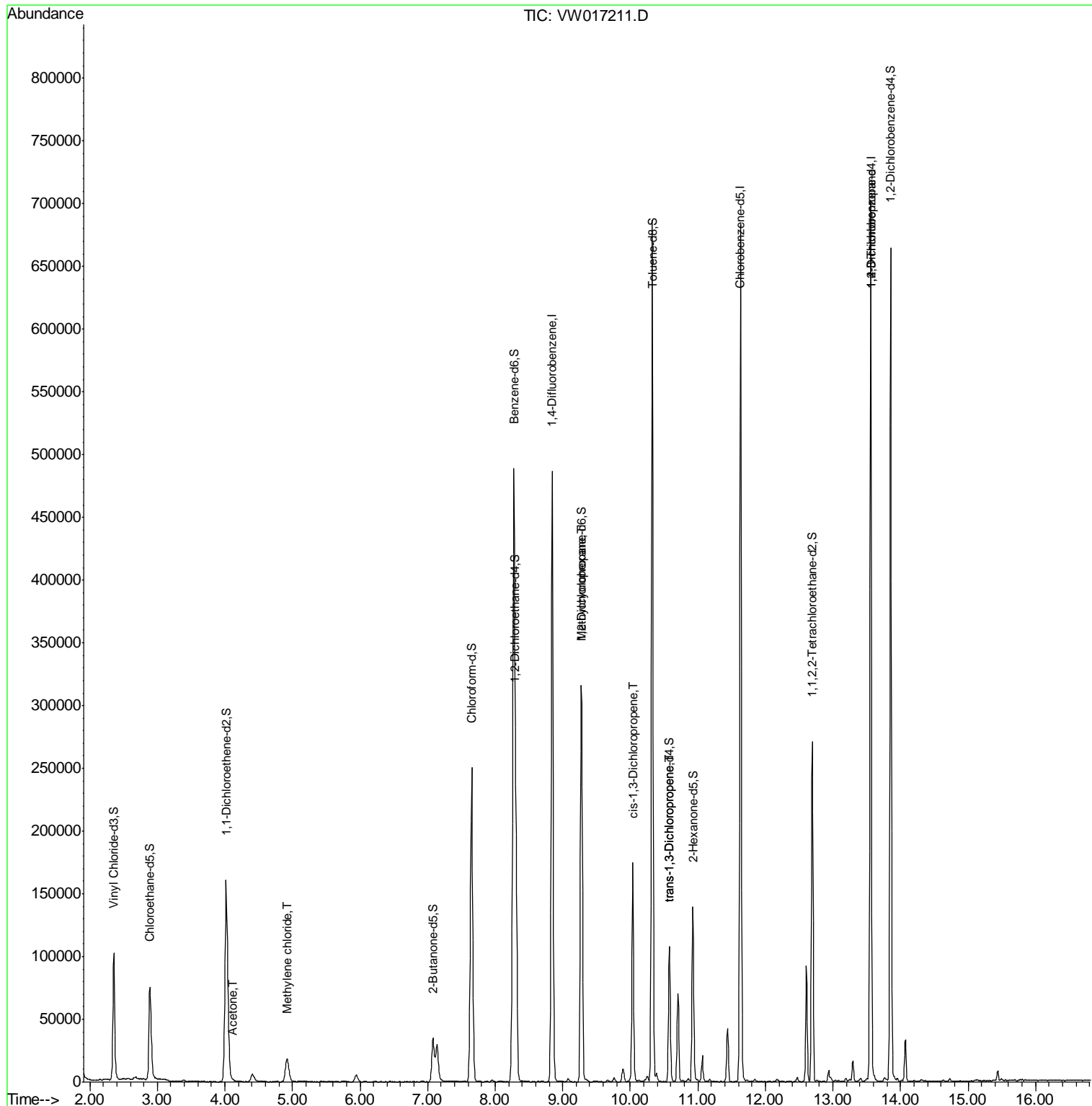
Target Compounds	R.T.	QIon	Response	Conc	Units	Ovalue
13) Acetone	4.12	43	1030	1.262	ug/L	54
16) Methylene chloride	4.92	84	9362	1.605	ug/L	99
36) Methylcyclohexane	9.27	83	37910	4.023	ug/L #	22
42) cis-1,3-Dichloropropene	10.04	75	4774	0.617	ug/L	85
45) trans-1,3-Dichloropropene	10.58	75	2963	0.446	ug/L	85
59) 1,2,3-Trichloropropane	13.56	75	20293	5.800	ug/L	92

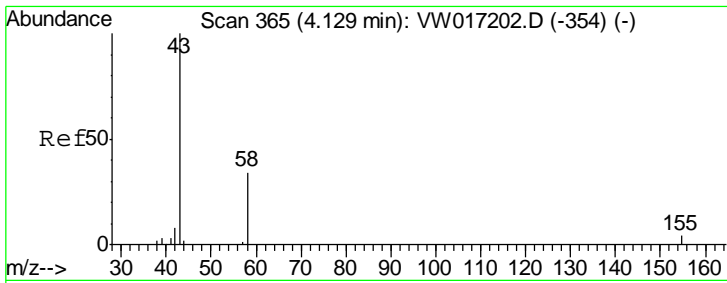
(#) = qualifier out of range (m) = manual integration (+) = signals summed

Data Path : Z:\VOASRV\HPCHEM1\MSVOA W\DATA\VW111320\
 Data File : VW017211.D
 Acq On : 13 Nov 2020 14:39
 Operator : SY/VA
 Sample : VIBLK
 Misc : 5.00G/10ML/MSVOA W/SOIL
 ALS Vial : 1 Sample Multiplier: 1

Instrument :
 MSVOA_W
 Client Sampled :
 VIBLK10

Quant Time: Nov 16 14:16:10 2020
 Quant Method : Z:\VOASRV\HPCHEM1\MSVOA_W\METHOD\SOM2WLM110420S.M
 Quant Title : VOC Analysis
 QLast Update : Mon Nov 16 11:48:24 2020
 Response via : Initial Calibration

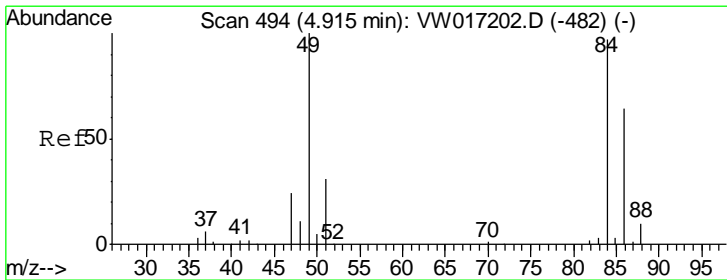
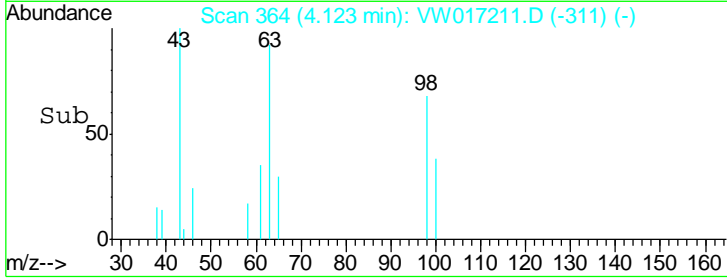
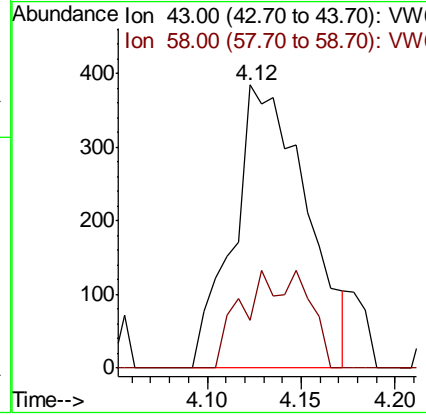
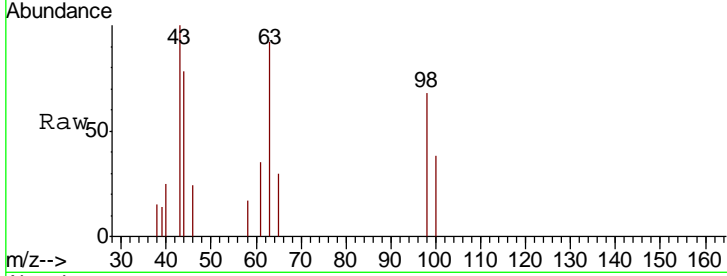




#13
 Acetone
 Concen: 1.262 ug/L
 RT: 4.12 min Scan# 364
 Delta R.T. -0.01 min
 Lab File: VW017211.D
 Acq: 13 Nov 2020 14:39

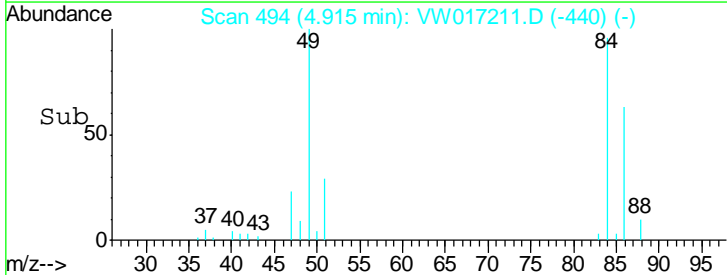
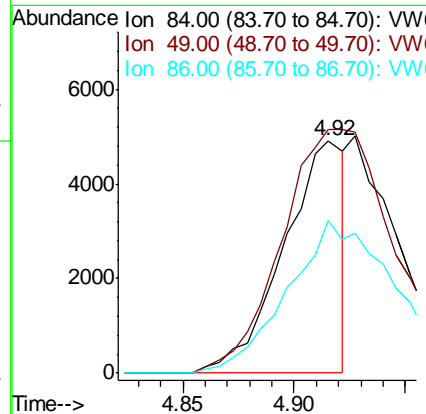
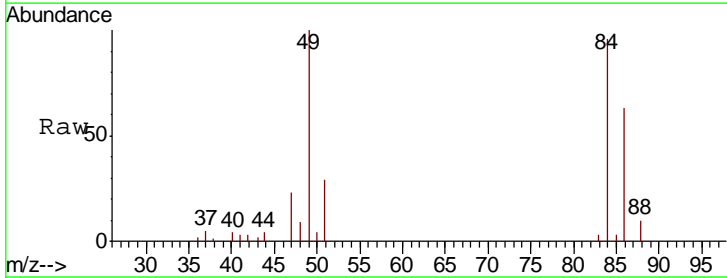
Instrument :
 MSVOA_W
 ClientSampled :
 VIBLK10

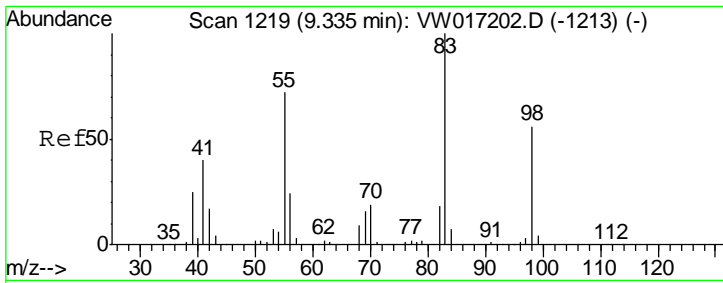
Tgt Ion	Resp	Lower	Upper
43	1030		
58	8.3	0.0	69.2



#16
 Methylene chloride
 Concen: 1.605 ug/L
 RT: 4.92 min Scan# 494
 Delta R.T. -0.00 min
 Lab File: VW017211.D
 Acq: 13 Nov 2020 14:39

Tgt Ion	Resp	Lower	Upper
84	9362		
49	104.6	72.3	134.3
86	65.5	45.1	83.7

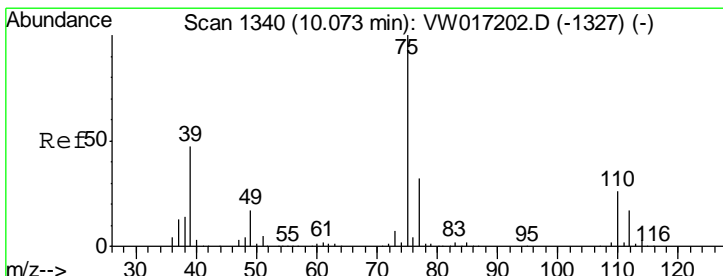
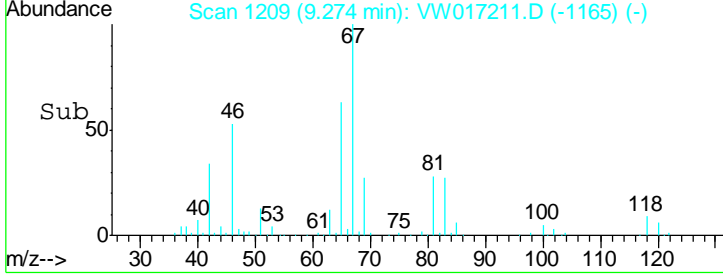
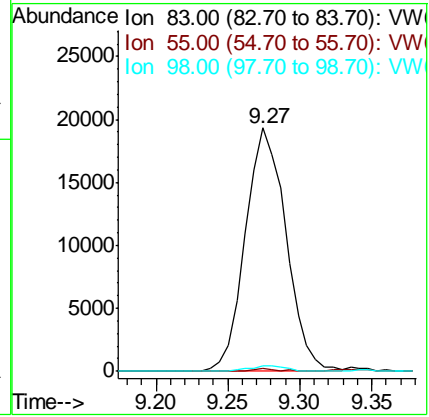
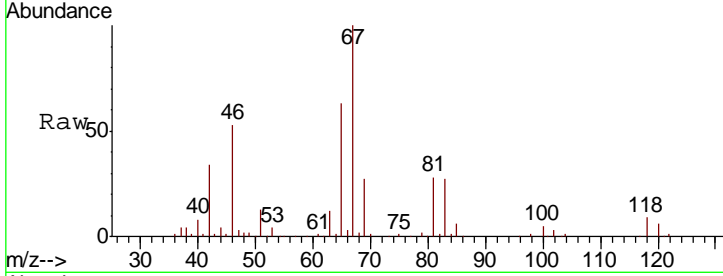




#36
 Methylcyclohexane
 Concen: 4.023 ug/L
 RT: 9.27 min Scan# 1209
 Delta R.T. -0.06 min
 Lab File: VW017211.D
 Acq: 13 Nov 2020 14:39

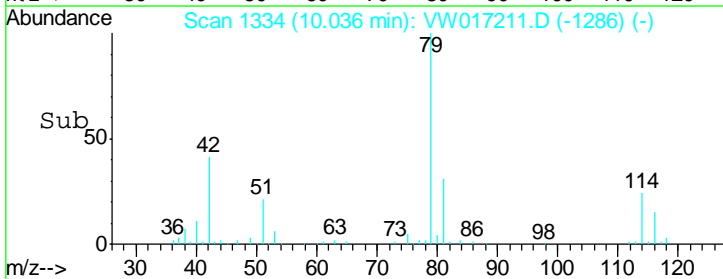
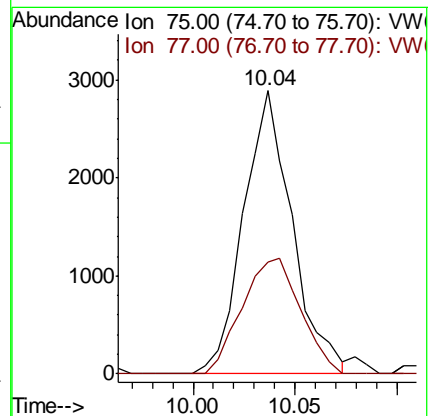
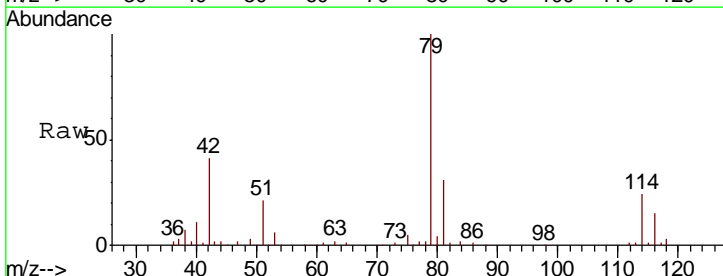
Instrument :
 MSVOA_W
 ClientSampled :
 VIBLK10

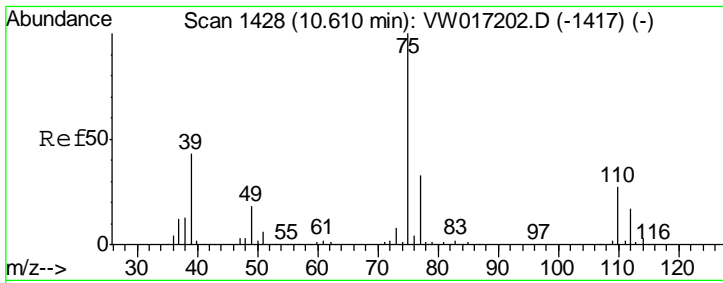
Tgt Ion	Resp	Lower	Upper
83	37910		
55	0.7	54.4	81.6#
98	2.0	40.5	60.7#



#42
 cis-1,3-Dichloropropene
 Concen: 0.617 ug/L
 RT: 10.04 min Scan# 1334
 Delta R.T. -0.04 min
 Lab File: VW017211.D
 Acq: 13 Nov 2020 14:39

Tgt Ion	Resp	Lower	Upper
75	4774		
77	39.6	22.0	41.0

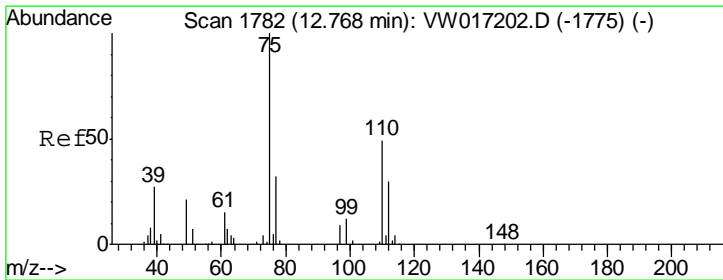
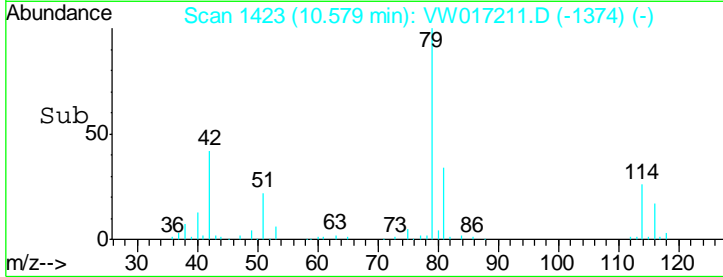
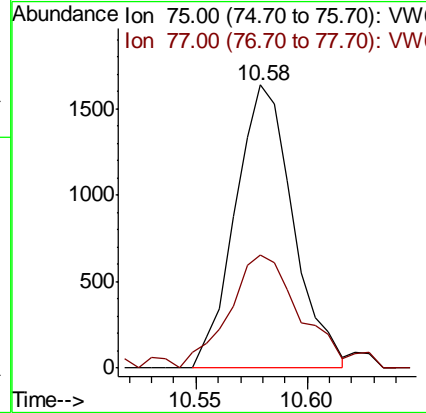
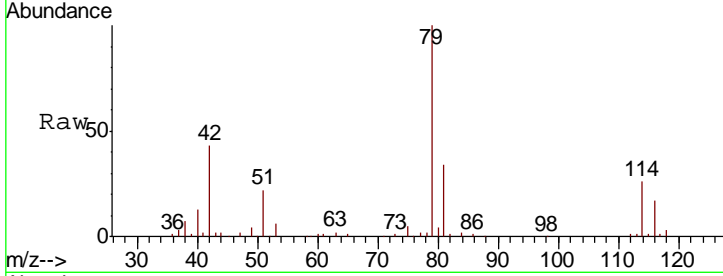




#45
 trans-1,3-Dichloropropene
 Concen: 0.446 ug/L
 RT: 10.58 min Scan# 1423
 Delta R.T. -0.03 min
 Lab File: VW017211.D
 Acq: 13 Nov 2020 14:39

Instrument :
 MSVOA_W
 ClientSampled :
 VIBLK10

Tgt Ion: 75 Resp: 2963
 Ion Ratio Lower Upper
 75 100
 77 39.8 22.1 41.1



#59
 1,2,3-Trichloropropane
 Concen: 5.800 ug/L
 RT: 13.56 min Scan# 1912
 Delta R.T. 0.79 min
 Lab File: VW017211.D
 Acq: 13 Nov 2020 14:39

Tgt Ion: 75 Resp: 20293
 Ion Ratio Lower Upper
 75 100
 77 37.8 26.4 39.6

