

Data Path : Z:\VOASRV\HPCHEM1\MSVOA W\DATA\VW111320\
 Data File : VW017203.D
 Acq On : 13 Nov 2020 11:01
 Operator : SY/VA
 Sample : VW1113SBL01
 Misc : 5.00G/10ML/MSVOA W/SOIL
 ALS Vial : 1 Sample Multiplier: 1

Instrument :
 MSVOA_W
 ClientSampleId :
 VBLK30

Quant Time: Nov 17 16:27:29 2020
 Quant Method : Z:\VOASRV\HPCHEM1\MSVOA_W\METHOD\SOM2WLM110420S.M
 Quant Title : VOC Analysis
 QLast Update : Mon Nov 16 11:48:24 2020
 Response via : Initial Calibration

Internal Standards	R.T.	QIon	Response	Conc	Units	Dev(Min)
1) 1,4-Difluorobenzene	8.85	114	422181	25.00	ug/L	0.00
28) Chlorobenzene-d5	11.63	117	384764	25.00	ug/L	0.00
60) 1,4-Dichlorobenzene-d4	13.56	152	185490	25.00	ug/L	0.00

System Monitoring Compounds

4) Vinyl Chloride-d3	2.35	65	119903	22.55	ug/L	0.00
Spiked Amount	25.000	Range	30 - 150	Recovery	=	90.20%
7) Chloroethane-d5	2.89	69	104175	25.42	ug/L	0.00
Spiked Amount	25.000	Range	30 - 150	Recovery	=	101.68%
10) 1,1-Dichloroethene-d2	4.02	63	174038	18.30	ug/L	0.00
Spiked Amount	25.000	Range	45 - 110	Recovery	=	73.20%
20) 2-Butanone-d5	7.08	46	62767	52.78	ug/L	0.00
Spiked Amount	50.000	Range	20 - 135	Recovery	=	105.56%
24) Chloroform-d	7.65	84	266138	27.00	ug/L	0.00
Spiked Amount	25.000	Range	40 - 150	Recovery	=	108.00%
26) 1,2-Dichloroethane-d4	8.31	65	142315	29.04	ug/L	0.00
Spiked Amount	25.000	Range	70 - 130	Recovery	=	116.16%
29) Benzene-d6	8.27	84	506850	25.87	ug/L	0.00
Spiked Amount	25.000	Range	20 - 135	Recovery	=	103.48%
33) 1,2-Dichloropropane-d6	9.27	67	143305	26.44	ug/L	0.00
Spiked Amount	25.000	Range	70 - 120	Recovery	=	105.76%
37) Toluene-d8	10.32	98	476423	25.79	ug/L	0.00
Spiked Amount	25.000	Range	30 - 130	Recovery	=	103.16%
38) trans-1,3-Dichloropropene-	10.58	79	63049	25.80	ug/L	0.00
Spiked Amount	25.000	Range	30 - 135	Recovery	=	103.20%
39) 2-Hexanone-d5	10.93	63	51885	54.86	ug/L	0.00
Spiked Amount	50.000	Range	20 - 135	Recovery	=	109.72%
48) 1,1,2,2-Tetrachloroethane-	12.69	84	130558	27.66	ug/L	0.00
Spiked Amount	25.000	Range	45 - 120	Recovery	=	110.64%
61) 1,2-Dichlorobenzene-d4	13.86	152	186181	28.49	ug/L	0.00
Spiked Amount	25.000	Range	75 - 120	Recovery	=	113.96%

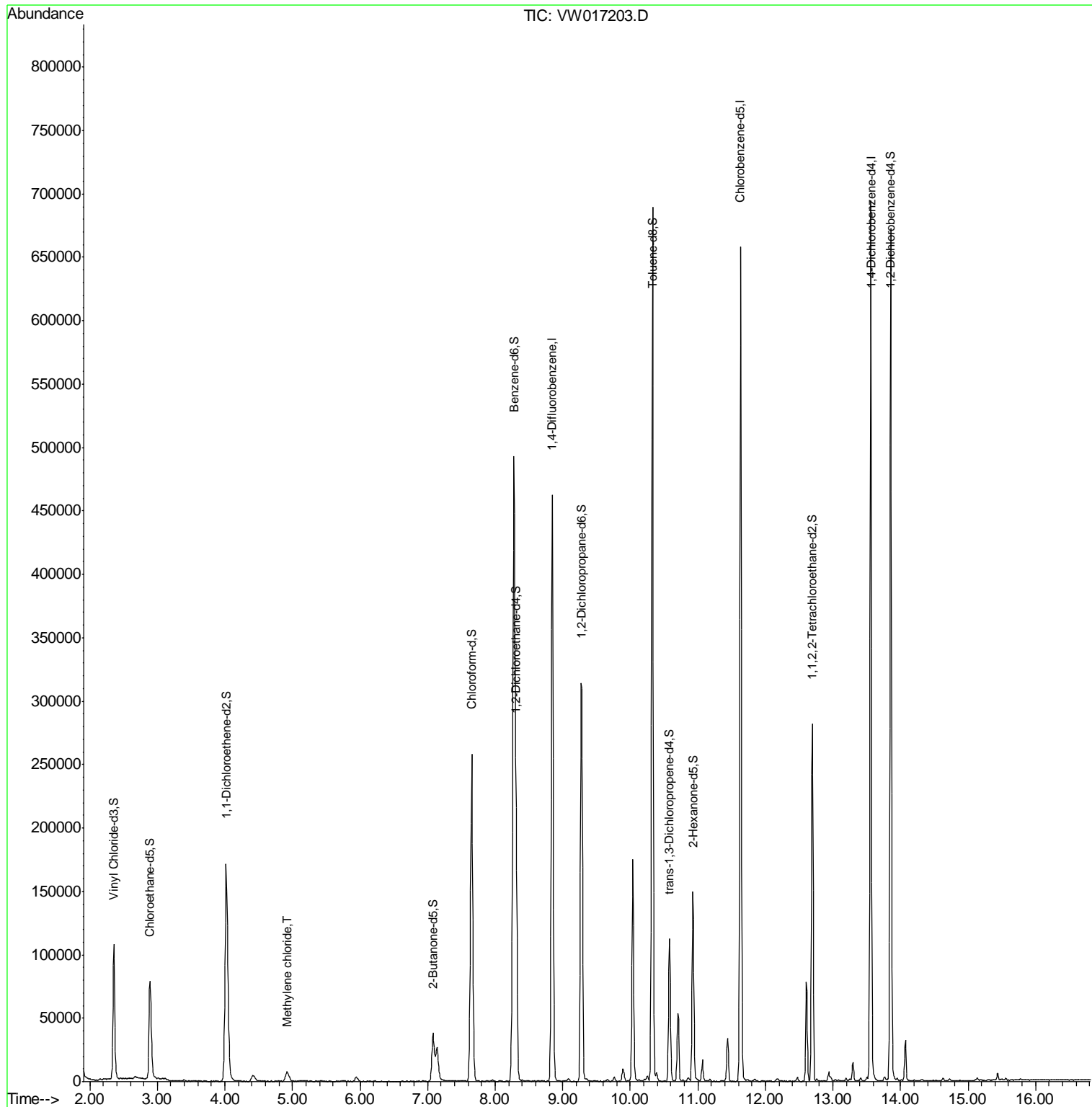
Target Compounds					Ovalue
16) Methylene chloride	4.93	84	6396	1.124 ug/L	97

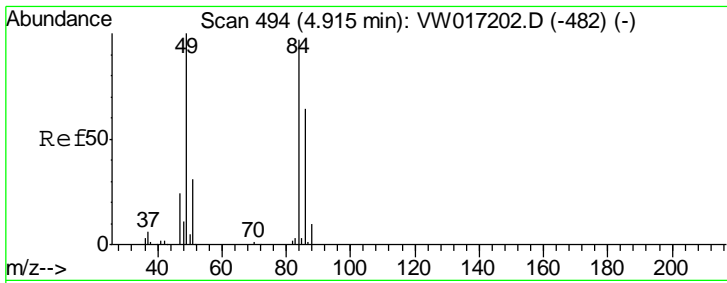
(#) = qualifier out of range (m) = manual integration (+) = signals summed

Data Path : Z:\VOASRV\HPCHEM1\MSVOA W\DATA\VW111320\
 Data File : VW017203.D
 Acq On : 13 Nov 2020 11:01
 Operator : SY/VA
 Sample : VW1113SBL01
 Misc : 5.00G/10ML/MSVOA W/SOIL
 ALS Vial : 1 Sample Multiplier: 1

Instrument :
 MSVOA_W
 ClientSampled :
 VBLK30

Quant Time: Nov 17 16:27:29 2020
 Quant Method : Z:\VOASRV\HPCHEM1\MSVOA_W\METHOD\SOM2WLM110420S.M
 Quant Title : VOC Analysis
 QLast Update : Mon Nov 16 11:48:24 2020
 Response via : Initial Calibration





#16
 Methylene chloride
 Concen: 1.124 ug/L
 RT: 4.93 min Scan# 496
 Delta R.T. 0.01 min
 Lab File: VW017203.D
 Acq: 13 Nov 2020 11:01

Instrument :
 MSVOA_W
 ClientSampled :
 VBLK30

Tot Ion: 84 Resp: 6396

Ion	Ratio	Lower	Upper
84	100		
49	104.4	72.3	134.3
86	60.6	45.1	83.7

