

Data Path : Z:\VOASRV\HPCHEM1\MSVOA W\DATA\VW111419\
 Data File : VW014019.D
 Acq On : 14 Nov 2019 14:34
 Operator : SY/VA
 Sample : K5798-14
 Misc : 4.68G/10ML/MSVOA W/SOIL
 ALS Vial : 1 Sample Multiplier: 1

Instrument :
 MSVOA_W
Client Sampled :
 BFLX2

Manual Integrations
APPROVED
 MMDadoda
 11/15/2019 9:42:57 AM

Quant Time: Nov 15 03:09:15 2019
 Quant Method : Z:\VOASRV\HPCHEM1\MSVOA_W\METHOD\SOM2WLM111119S.M
 Quant Title : VOC Analysis
 QLast Update : Fri Nov 15 01:46:12 2019
 Response via : Initial Calibration

Internal Standards	R.T.	QIon	Response	Conc	Units	Dev(Min)
1) 1,4-Difluorobenzene	8.84	114	334178	25.00	ug/L	0.00
28) Chlorobenzene-d5	11.63	117	310804	25.00	ug/L	0.00
60) 1,4-Dichlorobenzene-d4	13.55	152	144750	25.00	ug/L	0.00

System Monitoring Compounds

4) Vinyl Chloride-d3	2.35	65	124042	23.27	ug/L	0.00
Spiked Amount	25.000	Range	30 - 150	Recovery	=	93.08%
7) Chloroethane-d5	2.89	69	109307	25.29	ug/L	0.00
Spiked Amount	25.000	Range	30 - 150	Recovery	=	101.16%
10) 1,1-Dichloroethene-d2	4.02	63	197358	18.04	ug/L	0.00
Spiked Amount	25.000	Range	45 - 110	Recovery	=	72.16%
20) 2-Butanone-d5	7.07	46	113943	73.56	ug/L	0.00
Spiked Amount	50.000	Range	20 - 135	Recovery	=	147.12%#
24) Chloroform-d	7.65	84	271535	26.43	ug/L	0.00
Spiked Amount	25.000	Range	40 - 150	Recovery	=	105.72%
26) 1,2-Dichloroethane-d4	8.30	65	161895	31.34	ug/L	0.00
Spiked Amount	25.000	Range	70 - 130	Recovery	=	125.36%
29) Benzene-d6	8.27	84	611755	27.74	ug/L	0.00
Spiked Amount	25.000	Range	20 - 135	Recovery	=	110.96%
33) 1,2-Dichloropropane-d6	9.27	67	190839	29.54	ug/L	0.00
Spiked Amount	25.000	Range	70 - 120	Recovery	=	118.16%
37) Toluene-d8	10.32	98	534871	25.58	ug/L	0.00
Spiked Amount	25.000	Range	30 - 130	Recovery	=	102.32%
38) trans-1,3-Dichloropropene-	10.57	79	73810	26.68	ug/L	0.00
Spiked Amount	25.000	Range	30 - 135	Recovery	=	106.72%
39) 2-Hexanone-d5	10.92	63	87799	71.67	ug/L	0.00
Spiked Amount	50.000	Range	20 - 135	Recovery	=	143.34%#
48) 1,1,2,2-Tetrachloroethane-	12.69	84	147119	30.16	ug/L	0.00
Spiked Amount	25.000	Range	45 - 120	Recovery	=	120.64%#
61) 1,2-Dichlorobenzene-d4	13.85	152	171411	29.47	ug/L	0.00
Spiked Amount	25.000	Range	75 - 120	Recovery	=	117.88%

Target Compounds

Target Compounds	R.T.	QIon	Response	Conc	Units	Ovalue
13) Acetone	4.12	43	6887	4.369	ug/L	84
15) Methyl Acetate	4.67	43	14000m	5.490	ug/L	
16) Methylene chloride	4.91	84	10468	1.627	ug/L #	72
35) Trichloroethene	9.09	95	9804	1.612	ug/L	95
47) Tetrachloroethene	10.87	164	3644	0.672	ug/L	92

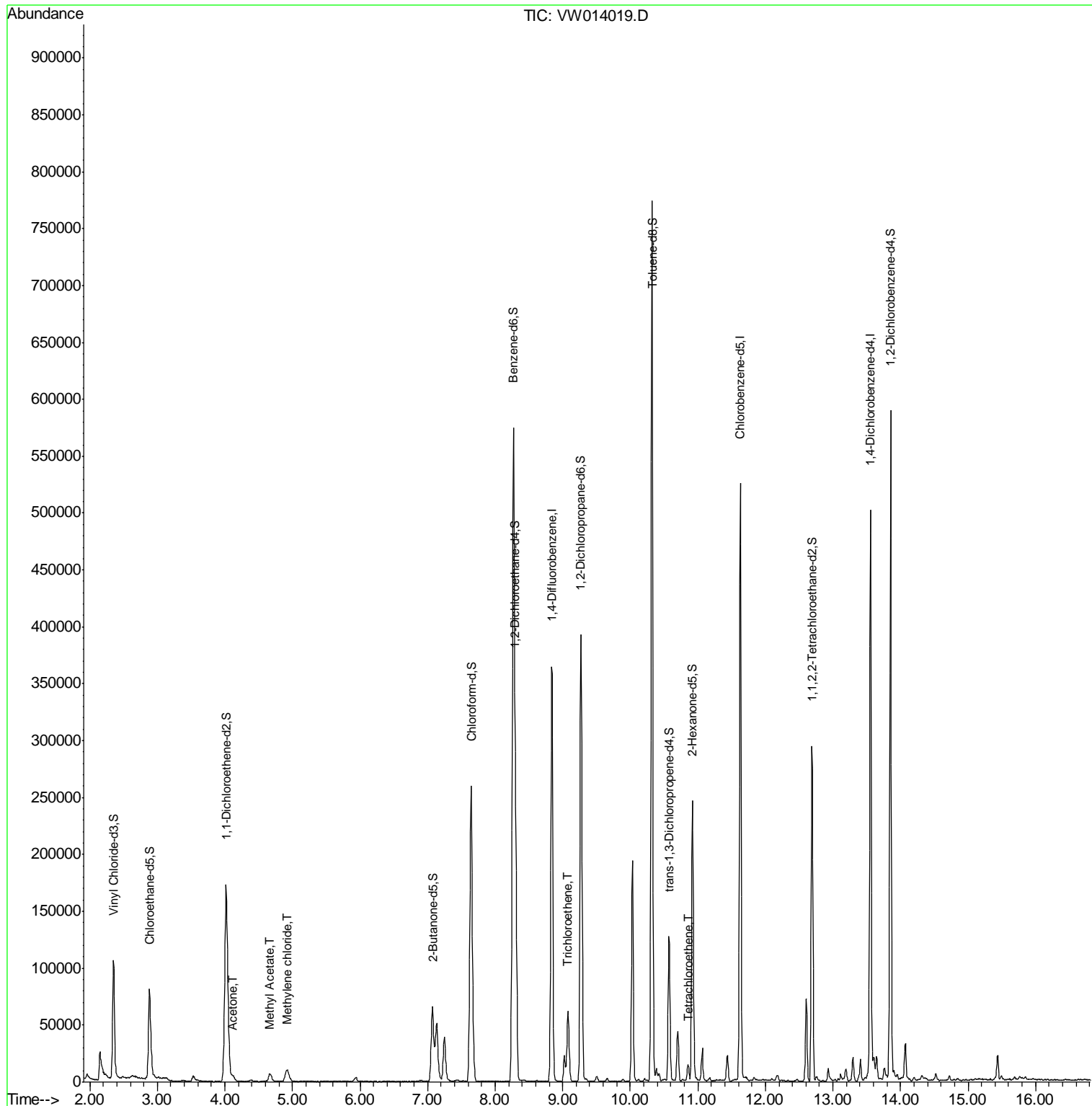
(#) = qualifier out of range (m) = manual integration (+) = signals summed

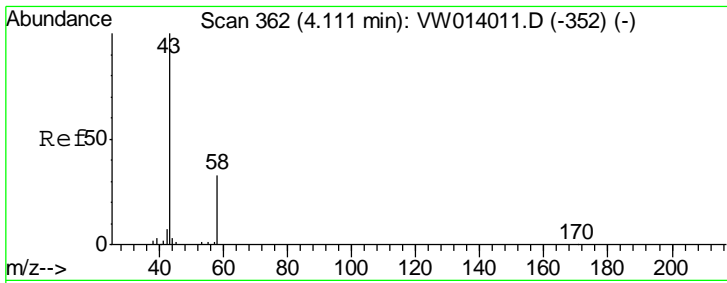
Data Path : Z:\VOASRV\HPCHEM1\MSVOA W\DATA\VW111419\
 Data File : VW014019.D
 Acq On : 14 Nov 2019 14:34
 Operator : SY/VA
 Sample : K5798-14
 Misc : 4.68G/10ML/MSVOA W/SOIL
 ALS Vial : 1 Sample Multiplier: 1

Instrument :
 MSVOA_W
 ClientSampled :
 BFLX2

Manual Integrations
 APPROVED
 MMDadoda
 11/15/2019 9:42:57 AM

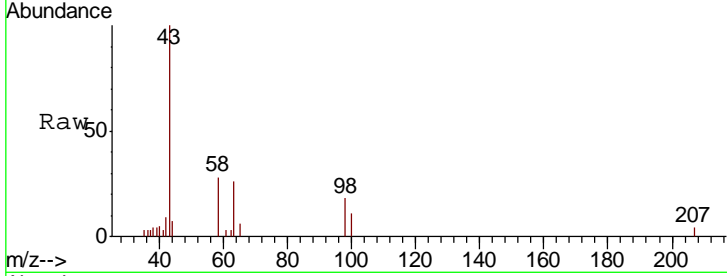
Quant Time: Nov 15 03:09:15 2019
 Quant Method : Z:\VOASRV\HPCHEM1\MSVOA_W\METHOD\SOM2WLM111119S.M
 Quant Title : VOC Analysis
 QLast Update : Fri Nov 15 01:46:12 2019
 Response via : Initial Calibration





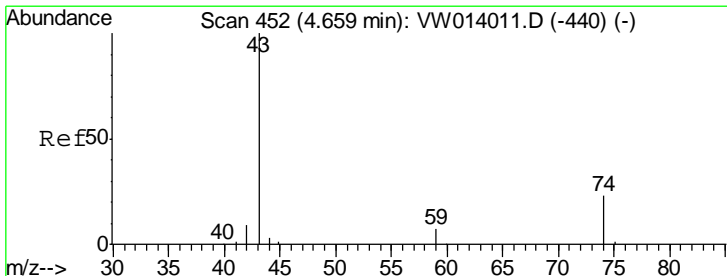
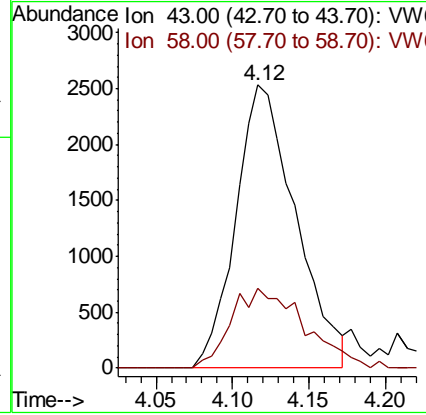
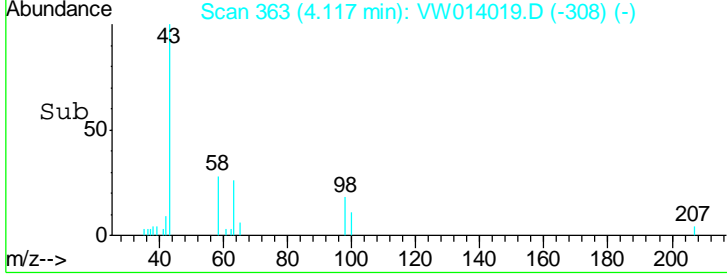
#13
 Acetone
 Concen: 4.369 ug/L
 RT: 4.12 min Scan# 363
 Delta R.T. 0.01 min
 Lab File: VW014019.D
 Acq: 14 Nov 2019 14:34

Instrument :
 MSVOA_W
ClientSampled :
 BFLX2

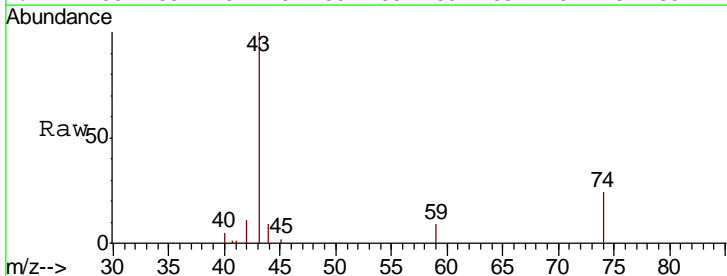


Tgt Ion: 43 Resp: 6887
 Ion Ratio Lower Upper
 43 100
 58 23.8 0.0 65.4

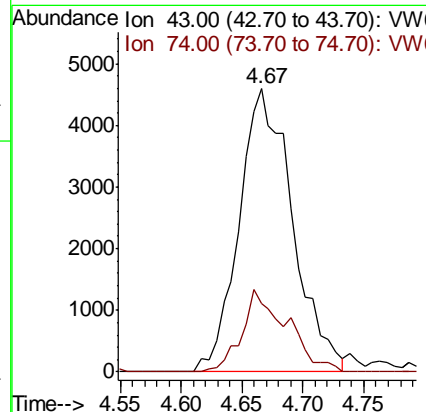
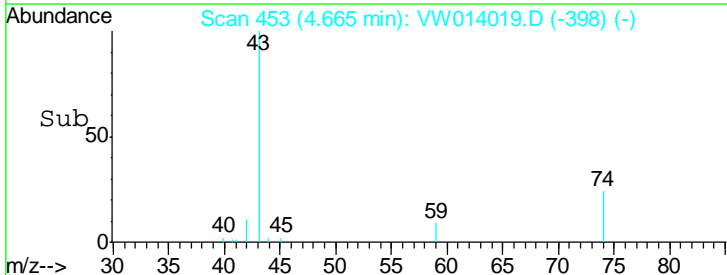
Manual Integrations
APPROVED
 MMDadoda
 11/15/2019 9:42:57 AM

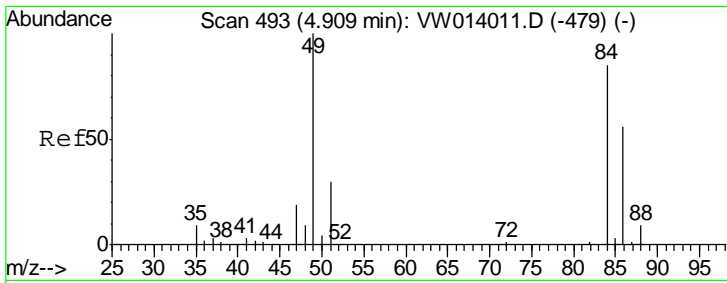


#15
 Methyl Acetate
 Concen: 5.490 ug/L m
 RT: 4.67 min Scan# 453
 Delta R.T. 0.01 min
 Lab File: VW014019.D
 Acq: 14 Nov 2019 14:34



Tgt Ion: 43 Resp: 14000
 Ion Ratio Lower Upper
 43 100
 74 18.4 19.3 28.9#





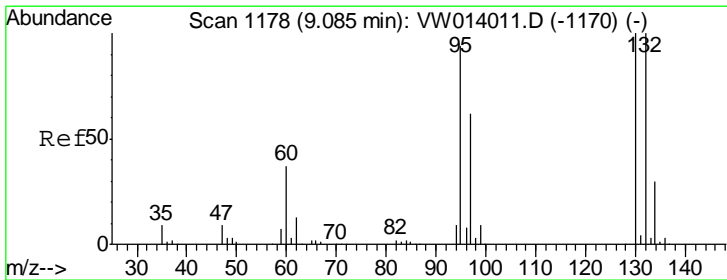
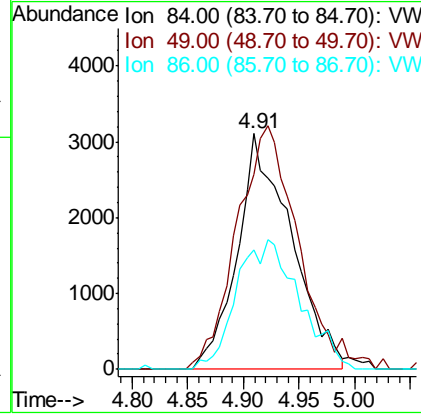
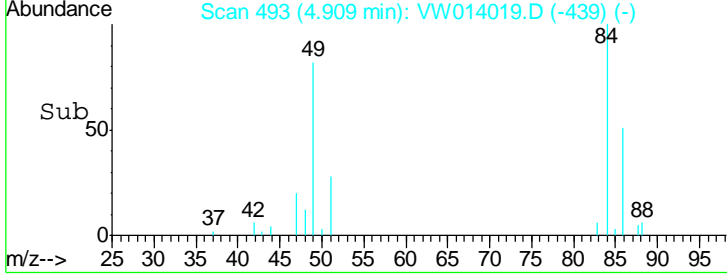
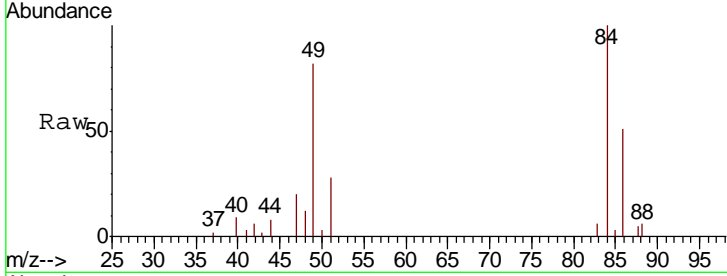
#16
 Methylene chloride
 Concen: 1.627 ug/L
 RT: 4.91 min Scan# 493
 Delta R.T. -0.00 min
 Lab File: VW014019.D
 Acq: 14 Nov 2019 14:34

Instrument :
 MSVOA_W
 ClientSampled :
 BFLX2

Tgt Ion	Resp	Lower	Upper
84	10468		
49	82.5	84.2	156.4#
86	50.8	43.7	81.1

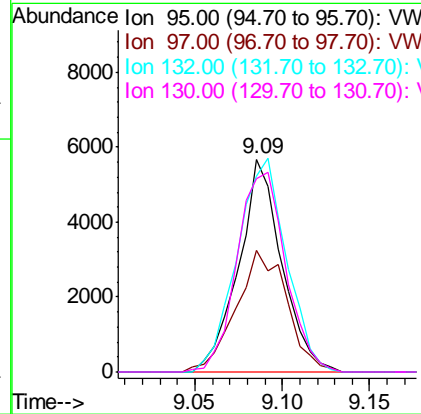
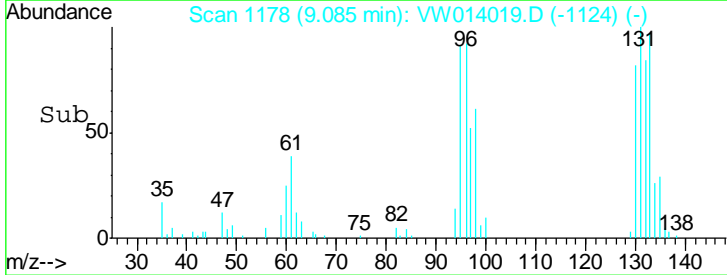
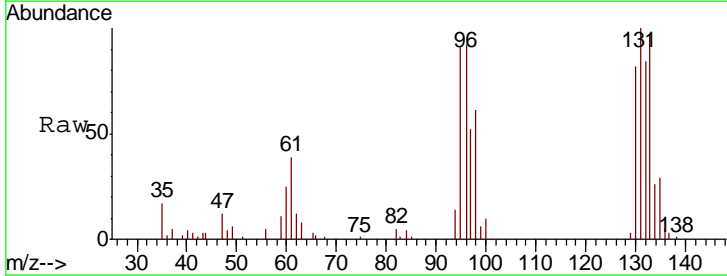
Manual Integrations
 APPROVED

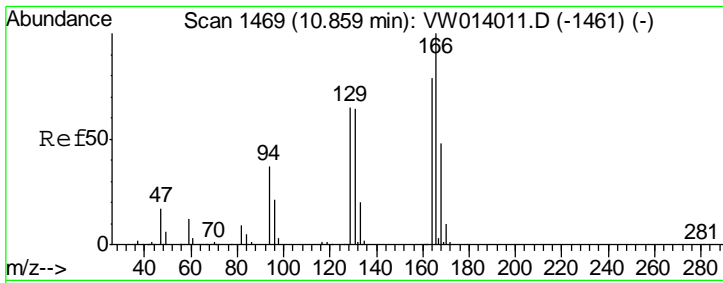
MMDadoda
 11/15/2019 9:42:57 AM



#35
 Trichloroethene
 Concen: 1.612 ug/L
 RT: 9.09 min Scan# 1178
 Delta R.T. -0.00 min
 Lab File: VW014019.D
 Acq: 14 Nov 2019 14:34

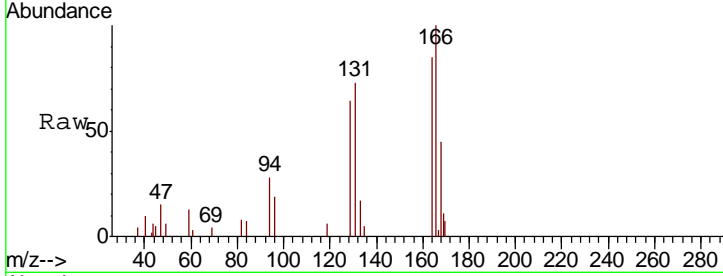
Tgt Ion	Resp	Lower	Upper
95	9804		
97	66.7	45.1	83.9
132	114.1	73.7	136.9
130	105.6	76.6	142.2





#47
 Tetrachloroethene
 Concen: 0.672 ug/L
 RT: 10.87 min Scan# 1470
 Delta R.T. 0.01 min
 Lab File: VW014019.D
 Acq: 14 Nov 2019 14:34

Instrument : MSVOA_W
 ClientSampled : BFLX2



Tot Ion:164 Resp: 3644

Ion	Ratio	Lower	Upper
164	100		
129	74.6	60.6	112.6
131	85.6	59.1	109.7
166	120.4	90.8	168.6

Manual Integrations
APPROVED
 MMDadoda
 11/15/2019 9:42:57 AM

