

Data Path : Z:\voasrv\HPCHEM1\MSVOA_W\Data\VW111521\
 Data File : VW020899.D
 Acq On : 15 Nov 2021 18:20
 Operator : SY/VA
 Sample : VSTDCCC025EC
 Misc : 5.00g/10.00mL/MSVOA_W/SOIL
 ALS Vial : 1 Sample Multiplier: 1

Instrument :
 MSVOA_W
 ClientSampleId :

Quant Time: Nov 16 04:00:28 2021
 Quant Method : Z:\voasrv\HPCHEM1\MSVOA_W\Method\SFAMWLM111521SMA.M
 Quant Title : SFAM01.0
 QLast Update : Mon Nov 15 12:12:25 2021
 Response via : Initial Calibration

Compound	R.T.	QIon	Response	Conc	Units	Dev(Min)
Internal Standards						
1) 1,4-Difluorobenzene	8.841	114	122474	25.000	ug/L	# 0.00
28) Chlorobenzene-d5	11.634	117	110412	25.000	ug/L	0.00
58) 1,4-Dichlorobenzene-d4	13.560	152	62781	25.000	ug/L	0.00
System Monitoring Compounds						
4) Vinyl Chloride-d3	2.349	65	33916	23.874	ug/L	0.00
Spiked Amount	25.000	Range 30 - 150	Recovery	=	95.480%	
7) Chloroethane-d5	2.885	69	20964	22.881	ug/L	0.00
Spiked Amount	25.000	Range 30 - 150	Recovery	=	91.520%	
11) 1,1-Dichloroethene-d2	4.019	63	56819	20.671	ug/L	0.00
Spiked Amount	25.000	Range 45 - 110	Recovery	=	82.680%	
21) 2-Butanone-d5	7.080	46	17970	50.678	ug/L	0.00
Spiked Amount	50.000	Range 20 - 135	Recovery	=	101.360%	
24) Chloroform-d	7.647	84	69827	22.627	ug/L	0.00
Spiked Amount	25.000	Range 40 - 150	Recovery	=	90.520%	
26) 1,2-Dichloroethane-d4	8.305	65	36971	23.603	ug/L	0.00
Spiked Amount	25.000	Range 70 - 130	Recovery	=	94.400%	
32) Benzene-d6	8.275	84	136647	23.482	ug/L	0.00
Spiked Amount	25.000	Range 20 - 135	Recovery	=	93.920%	
36) 1,2-Dichloropropane-d6	9.274	67	38654	23.326	ug/L	0.00
Spiked Amount	25.000	Range 70 - 120	Recovery	=	93.320%	
41) Toluene-d8	10.323	98	131549	22.776	ug/L	0.00
Spiked Amount	25.000	Range 30 - 130	Recovery	=	91.120%	
43) trans-1,3-Dichloroprop...	10.579	79	18831	24.042	ug/L	0.00
Spiked Amount	25.000	Range 30 - 135	Recovery	=	96.160%	
47) 2-Hexanone-d5	10.920	63	15355	55.870	ug/L	0.00
Spiked Amount	50.000	Range 20 - 135	Recovery	=	111.740%	
56) 1,1,2,2-Tetrachloroeth...	12.688	84	33326	26.253	ug/L	0.00
Spiked Amount	25.000	Range 45 - 120	Recovery	=	105.000%	
66) 1,2-Dichlorobenzene-d4	13.853	152	54765	24.475	ug/L	0.00
Spiked Amount	25.000	Range 75 - 120	Recovery	=	97.880%	
Target Compounds						
2) Dichlorodifluoromethane	2.007	85	10755	30.343	ug/L	98
3) Chloromethane	2.215	50	22781	21.140	ug/L	99
5) Vinyl chloride	2.361	62	39876	21.394	ug/L	96
6) Bromomethane	2.776	94	18680	18.074	ug/L	97
8) Chloroethane	2.922	64	15800	20.163	ug/L	99
9) Trichlorofluoromethane	3.251	101	19227	17.709	ug/L	98
10) 1,1,2-Trichloro-1,2,2-...	4.062	101	35277	21.373	ug/L	91
12) 1,1-Dichloroethene	4.044	96	32003	20.855	ug/L	75
13) Acetone	4.123	43	14917	47.118	ug/L	93
14) Carbon disulfide	4.385	76	77981	18.790	ug/L	98
15) Methyl Acetate	4.672	43	13462	23.711	ug/L	91
16) Methylene chloride	4.921	84	34896	20.429	ug/L	85
17) trans-1,2-Dichloroethene	5.421	96	34231	20.698	ug/L	82
18) Methyl tert-butyl Ether	5.434	73	55324	22.285	ug/L	94
19) 1,1-Dichloroethane	6.214	63	58053	21.185	ug/L	98
20) cis-1,2-Dichloroethene	7.171	96	37993	21.315	ug/L	73
22) 2-Butanone	7.177	43	20072	46.665	ug/L	89
23) Bromochloromethane	7.519	128	18364	22.536	ug/L	# 63
25) Chloroform	7.677	83	65034	21.713	ug/L	100

Data Path : Z:\voasrv\HPCHEM1\MSVOA_W\Data\VW111521\
 Data File : VW020899.D
 Acq On : 15 Nov 2021 18:20
 Operator : SY/VA
 Sample : VSTDCCC025EC
 Misc : 5.00g/10.00mL/MSVOA_W/SOIL
 ALS Vial : 1 Sample Multiplier: 1

Instrument :
 MSVOA_W
 ClientSampleId :

Quant Time: Nov 16 04:00:28 2021
 Quant Method : Z:\voasrv\HPCHEM1\MSVOA_W\Method\SFAMWLM111521SMA.M
 Quant Title : SFAM01.0
 QLast Update : Mon Nov 15 12:12:25 2021
 Response via : Initial Calibration

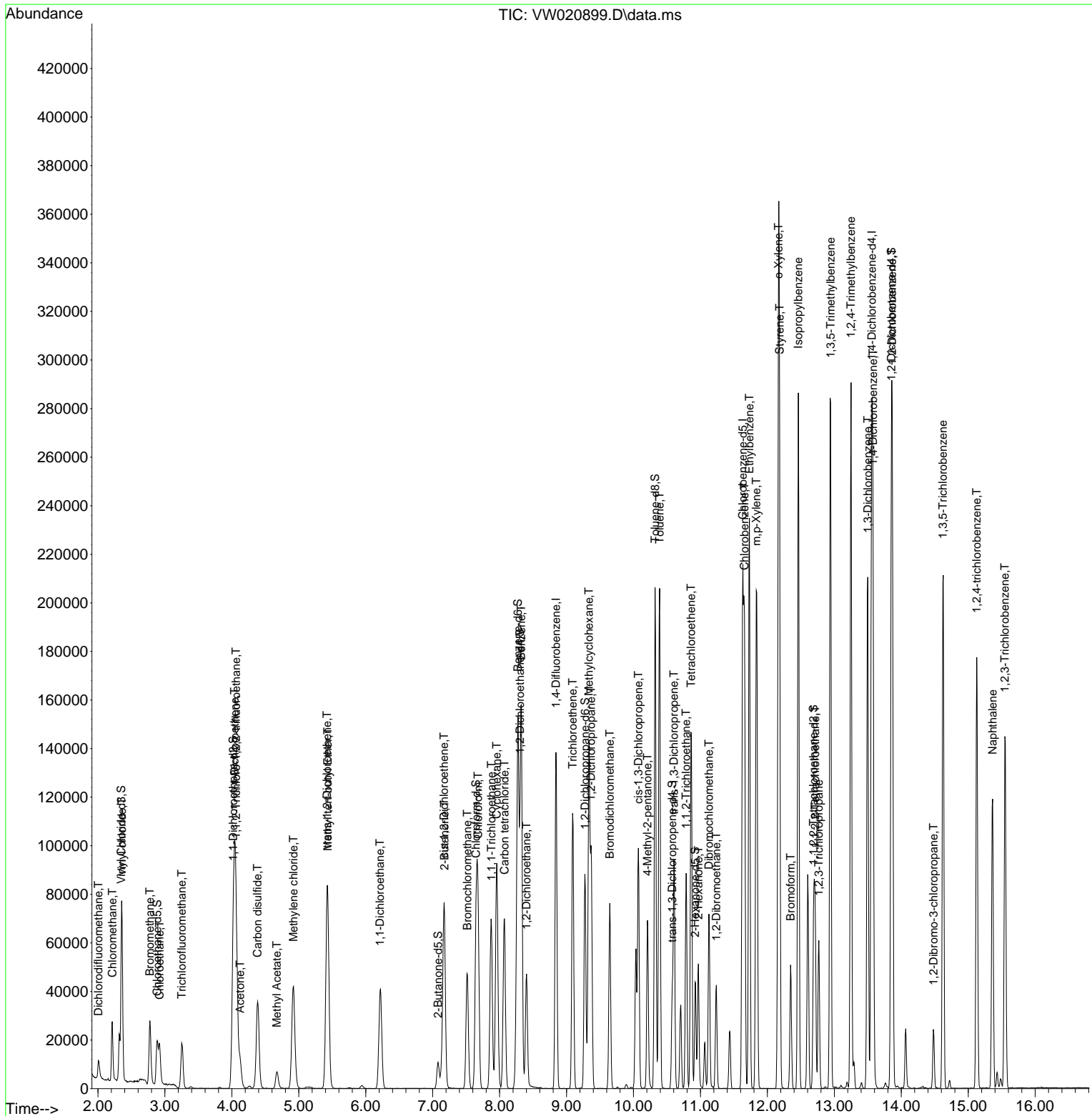
Compound	R.T.	QIon	Response	Conc	Units	Dev(Min)
27) 1,2-Dichloroethane	8.403	62	40708	22.445	ug/L	97
29) Cyclohexane	7.958	56	50307	20.437	ug/L #	84
30) 1,1,1-Trichloroethane	7.878	97	56923	21.439	ug/L	94
31) Carbon tetrachloride	8.073	117	53684	21.362	ug/L	99
33) Benzene	8.323	78	134969	21.590	ug/L	100
34) Trichloroethene	9.091	95	37593	21.499	ug/L	92
35) Methylcyclohexane	9.335	83	58805	20.398	ug/L	86
37) 1,2-Dichloropropane	9.366	63	32671	22.455	ug/L #	95
38) Bromodichloromethane	9.646	83	47723	22.856	ug/L	98
39) cis-1,3-Dichloropropene	10.073	75	54784	22.806	ug/L	96
40) 4-Methyl-2-pentanone	10.207	43	43499	50.231	ug/L #	93
42) Toluene	10.390	91	150839	21.451	ug/L	99
44) trans-1,3-Dichloropropene	10.603	75	48476	22.962	ug/L	96
45) 1,1,2-Trichloroethane	10.786	97	27314	24.138	ug/L	92
46) Tetrachloroethene	10.859	164	34612	21.558	ug/L	88
48) 2-Hexanone	10.969	43	31184	51.987	ug/L #	94
49) Dibromochloromethane	11.128	129	36384	23.323	ug/L	100
50) 1,2-Dibromoethane	11.237	107	27508	24.247	ug/L	99
51) Chlorobenzene	11.658	112	102726	21.965	ug/L	92
52) Ethylbenzene	11.731	91	168131	21.578	ug/L	97
53) m,p-Xylene	11.835	106	69328	21.793	ug/L	83
54) o-Xylene	12.164	106	67091	21.960	ug/L	93
55) Styrene	12.182	104	113051	22.285	ug/L	91
57) 1,1,2,2-Tetrachloroethane	12.713	83	31803	25.358	ug/L #	92
59) Bromoform	12.347	173	22681	24.229	ug/L	97
60) Isopropylbenzene	12.463	105	180889	21.154	ug/L	95
61) 1,2,3-Trichloropropane	12.768	75	23588	25.614	ug/L	93
62) 1,3,5-Trimethylbenzene	12.944	105	156498	21.695	ug/L	96
63) 1,2,4-Trimethylbenzene	13.249	105	154577	21.719	ug/L	95
64) 1,3-Dichlorobenzene	13.499	146	91482	22.819	ug/L	95
65) 1,4-Dichlorobenzene	13.578	146	91828	22.707	ug/L	88
67) 1,2-Dichlorobenzene	13.865	146	81005	22.930	ug/L	95
68) 1,2-Dibromo-3-chloropr...	14.481	75	5616	25.509	ug/L #	74
69) 1,3,5-Trichlorobenzene	14.621	180	66557	20.961	ug/L	93
70) 1,2,4-trichlorobenzene	15.127	180	60623	23.337	ug/L	95
71) Naphthalene	15.365	128	107119	25.307	ug/L	99
72) 1,2,3-Trichlorobenzene	15.548	180	52718	24.049	ug/L	95

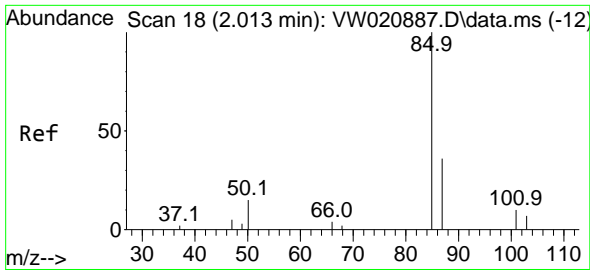
(#) = qualifier out of range (m) = manual integration (+) = signals summed

Data Path : Z:\voasrv\HPCHEM1\MSVOA_W\Data\VW111521\
Data File : VW020899.D
Acq On : 15 Nov 2021 18:20
Operator : SY/VA
Sample : VSTDCCC025EC
Misc : 5.00g/10.00mL/MSVOA_W/SOIL
ALS Vial : 1 Sample Multiplier: 1

Instrument :
MSVOA_W
Client SampleId :

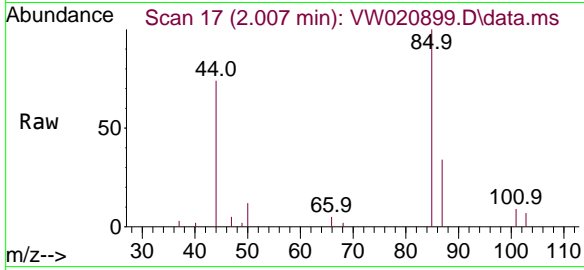
Quant Time: Nov 16 04:00:28 2021
Quant Method : Z:\voasrv\HPCHEM1\MSVOA_W\Method\SFAMWLM111521SMA.M
Quant Title : SFAM01.0
QLast Update : Mon Nov 15 12:12:25 2021
Response via : Initial Calibration



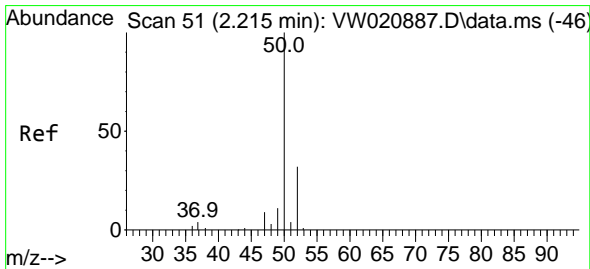
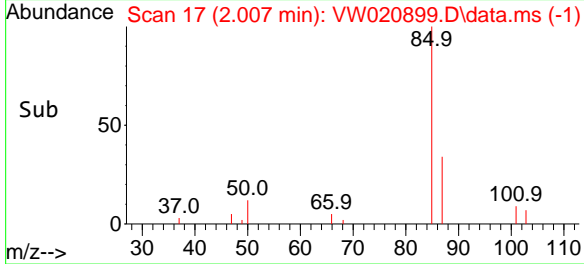
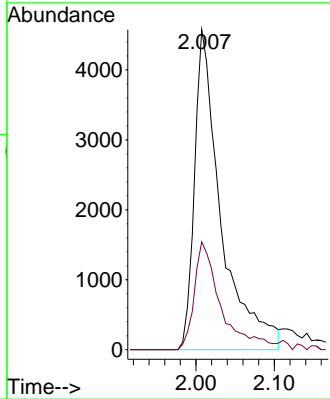


#2
 Dichlorodifluoromethane
 Concen: 30.343 ug/L
 RT: 2.007 min Scan# 1
 Delta R.T. -0.006 min
 Lab File: VW020899.D
 Acq: 15 Nov 2021 18:20

Instrument :
 MSVOA_W
 ClientSampleId :

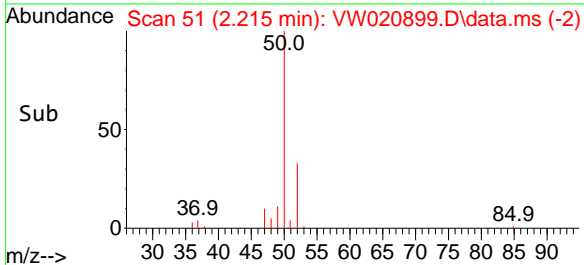
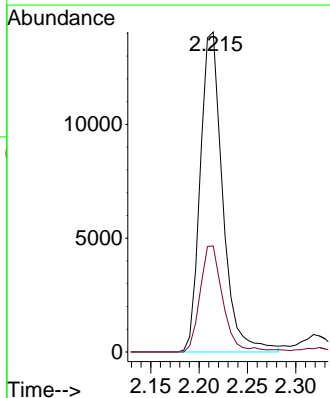
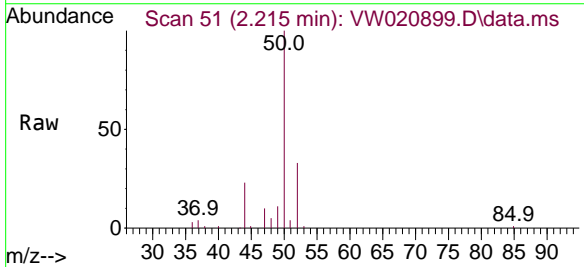


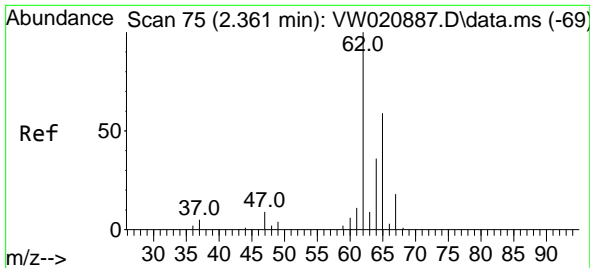
Tgt Ion: 85 Resp: 10755
 Ion Ratio Lower Upper
 85 100
 87 31.3 25.8 38.6



#3
 Chloromethane
 Concen: 21.140 ug/L
 RT: 2.215 min Scan# 51
 Delta R.T. 0.000 min
 Lab File: VW020899.D
 Acq: 15 Nov 2021 18:20

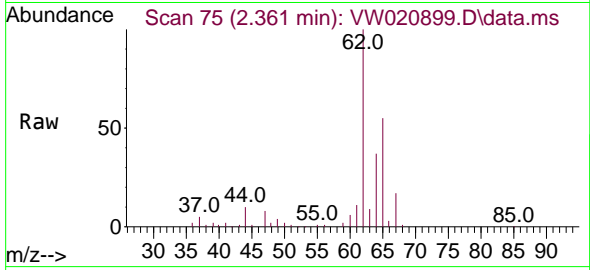
Tgt Ion: 50 Resp: 22781
 Ion Ratio Lower Upper
 50 100
 52 33.2 23.4 43.6



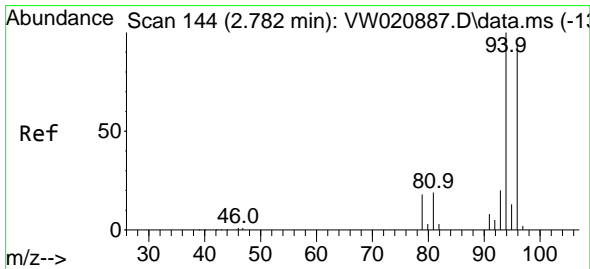
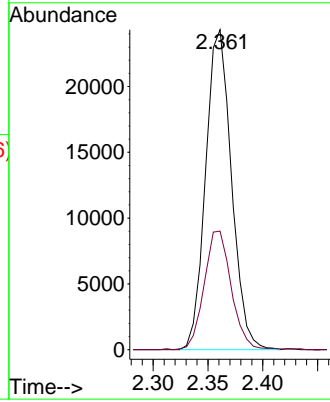
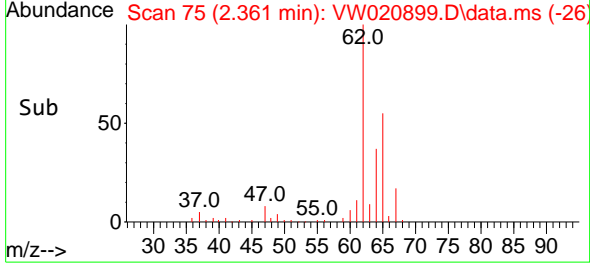


#5
 Vinyl chloride
 Concen: 21.394 ug/L
 RT: 2.361 min Scan# 71
 Delta R.T. 0.000 min
 Lab File: VW020899.D
 Acq: 15 Nov 2021 18:20

Instrument :
 MSVOA_W
 ClientSampleId :

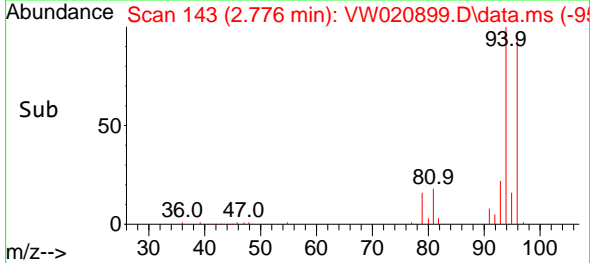
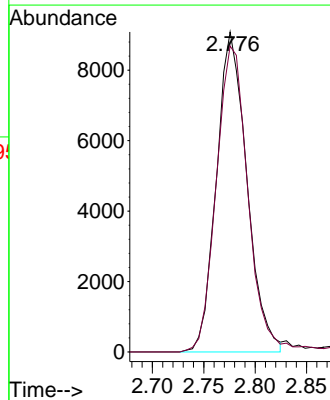
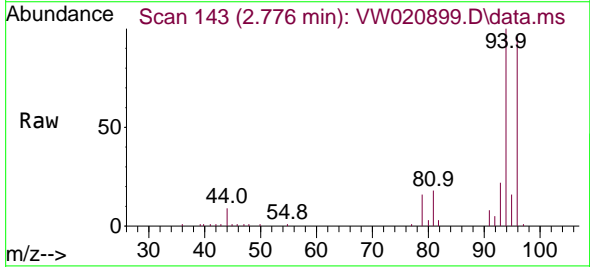


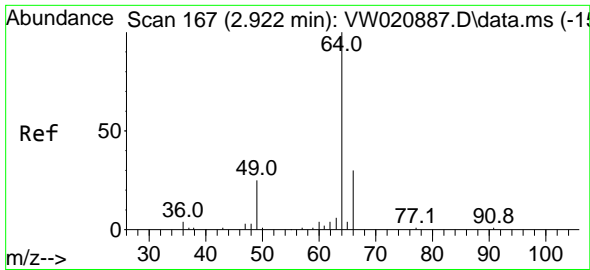
Tgt Ion: 62 Resp: 39876
 Ion Ratio Lower Upper
 62 100
 64 37.0 24.4 45.2



#6
 Bromomethane
 Concen: 18.074 ug/L
 RT: 2.776 min Scan# 143
 Delta R.T. -0.006 min
 Lab File: VW020899.D
 Acq: 15 Nov 2021 18:20

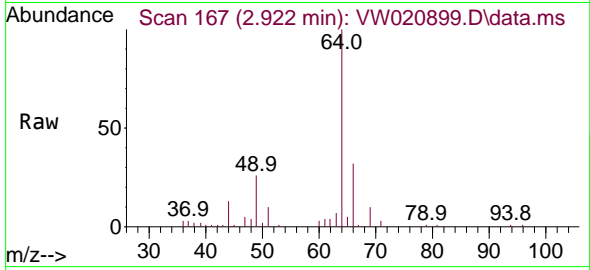
Tgt Ion: 94 Resp: 18680
 Ion Ratio Lower Upper
 94 100
 96 95.6 64.8 120.4



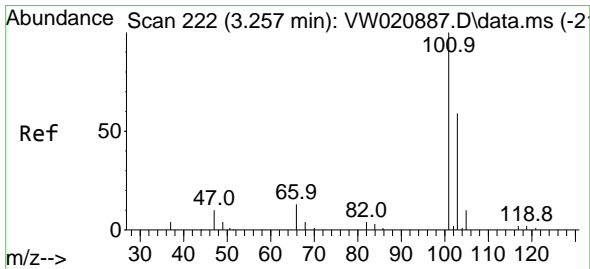
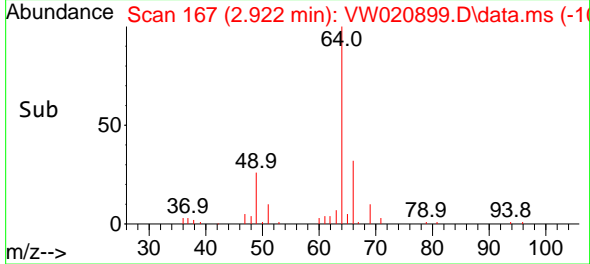
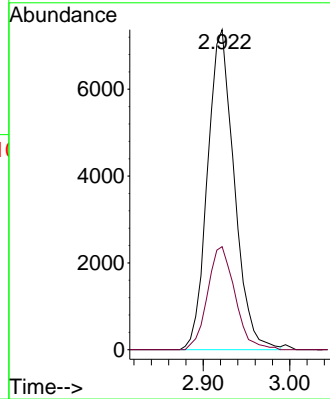


#8
 Chloroethane
 Concen: 20.163 ug/L
 RT: 2.922 min Scan# 167
 Delta R.T. 0.000 min
 Lab File: VW020899.D
 Acq: 15 Nov 2021 18:20

Instrument :
 MSVOA_W
 ClientSampleId :

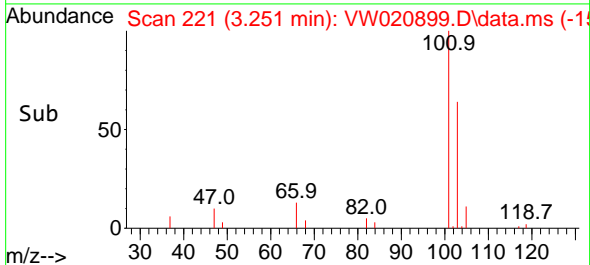
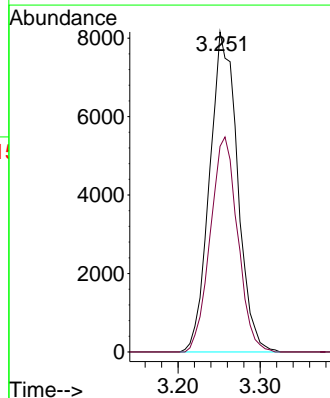
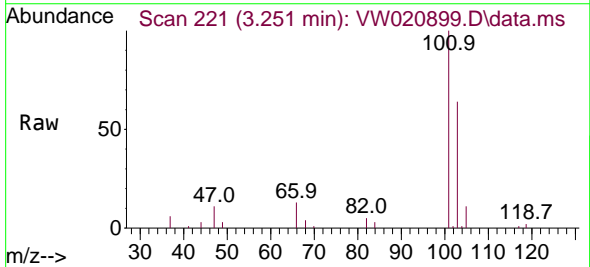


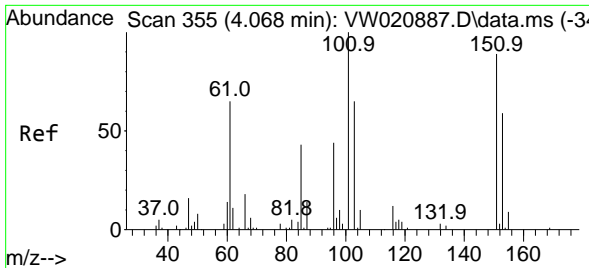
Tgt Ion: 64 Resp: 15800
 Ion Ratio Lower Upper
 64 100
 66 32.2 22.0 40.8



#9
 Trichlorofluoromethane
 Concen: 17.709 ug/L
 RT: 3.251 min Scan# 221
 Delta R.T. -0.006 min
 Lab File: VW020899.D
 Acq: 15 Nov 2021 18:20

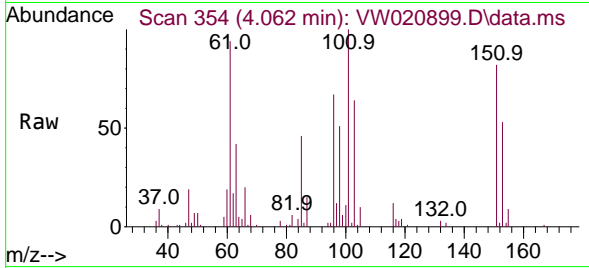
Tgt Ion: 101 Resp: 19227
 Ion Ratio Lower Upper
 101 100
 103 65.9 51.4 77.2



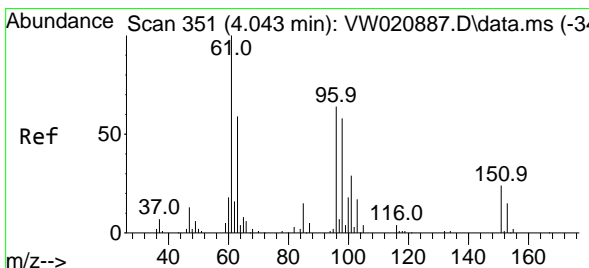
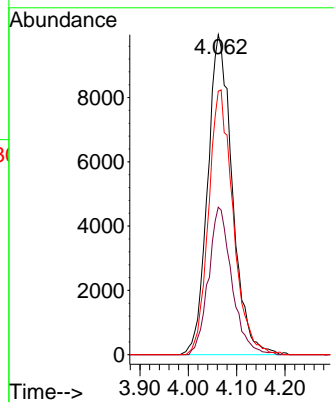
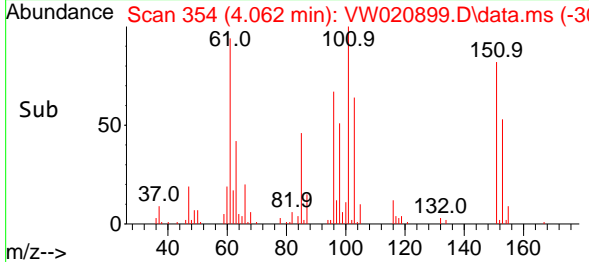


#10
 1,1,2-Trichloro-1,2,2-trifluoroethane
 Concen: 21.373 ug/L
 RT: 4.062 min Scan# 311
 Delta R.T. -0.006 min
 Lab File: VW020899.D
 Acq: 15 Nov 2021 18:20

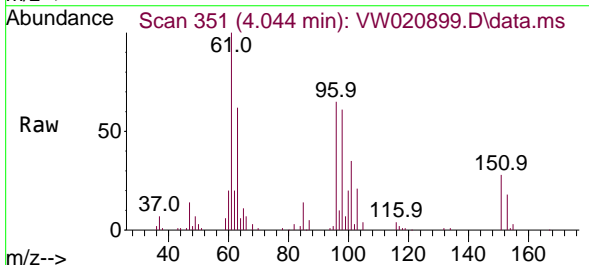
Instrument :
 MSVOA_W
 ClientSampled :



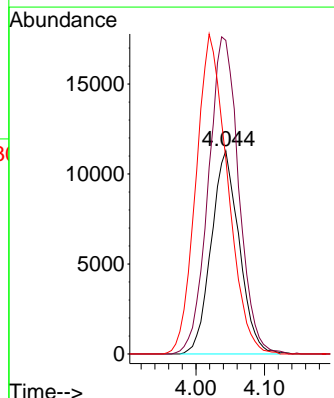
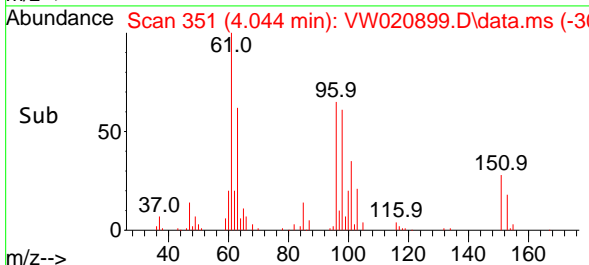
Tgt Ion:101 Resp: 35277
 Ion Ratio Lower Upper
 101 100
 85 43.5 36.6 54.8
 151 82.0 57.4 86.0

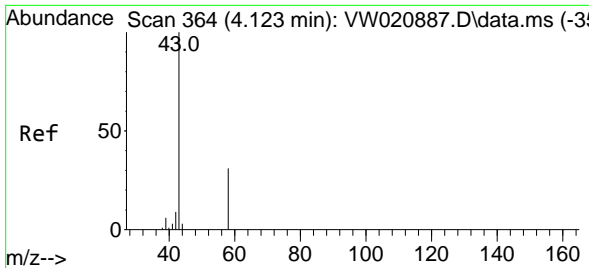


#12
 1,1-Dichloroethene
 Concen: 20.855 ug/L
 RT: 4.044 min Scan# 351
 Delta R.T. 0.000 min
 Lab File: VW020899.D
 Acq: 15 Nov 2021 18:20



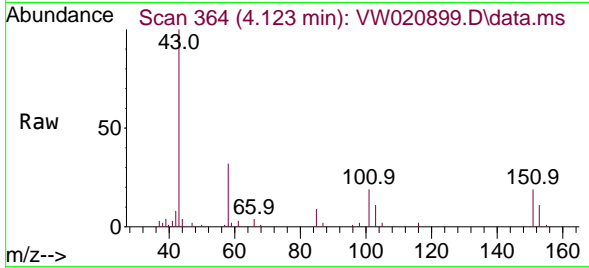
Tgt Ion: 96 Resp: 32003
 Ion Ratio Lower Upper
 96 100
 61 154.4 138.3 256.9
 63 96.3 82.6 153.4



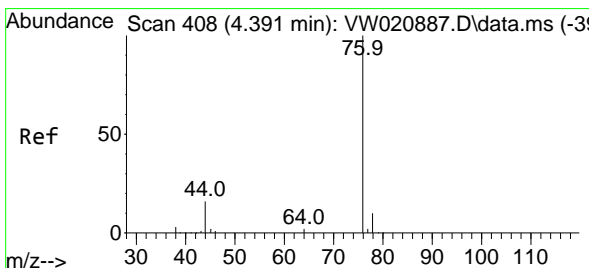
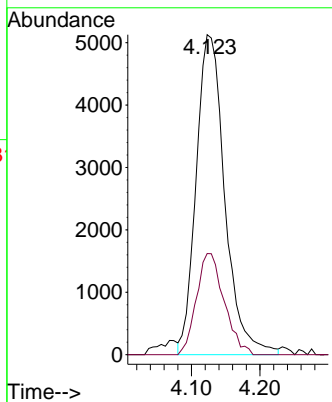
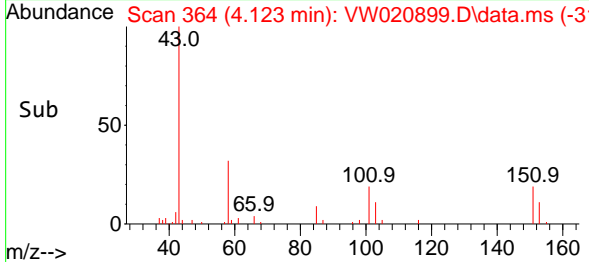


#13
 Acetone
 Concen: 47.118 ug/L
 RT: 4.123 min Scan# 364
 Delta R.T. 0.000 min
 Lab File: VW020899.D
 Acq: 15 Nov 2021 18:20

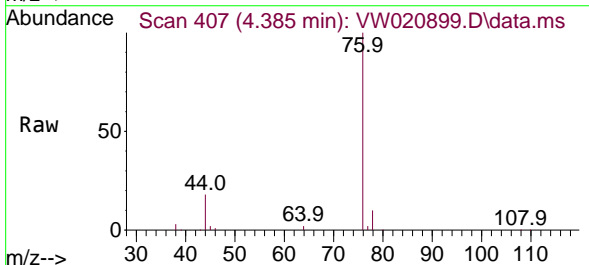
Instrument :
 MSVOA_W
 ClientSampled :



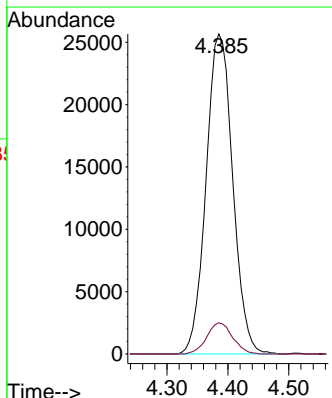
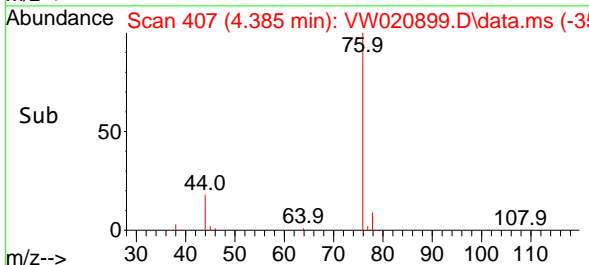
Tgt Ion: 43 Resp: 14917
 Ion Ratio Lower Upper
 43 100
 58 30.0 0.0 52.8

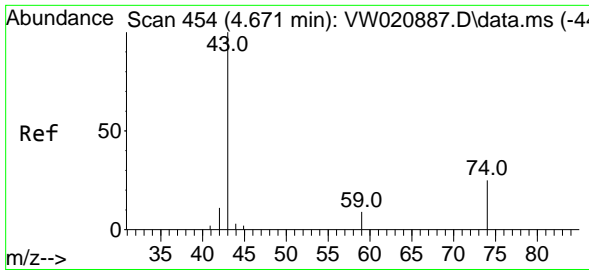


#14
 Carbon disulfide
 Concen: 18.790 ug/L
 RT: 4.385 min Scan# 407
 Delta R.T. -0.006 min
 Lab File: VW020899.D
 Acq: 15 Nov 2021 18:20



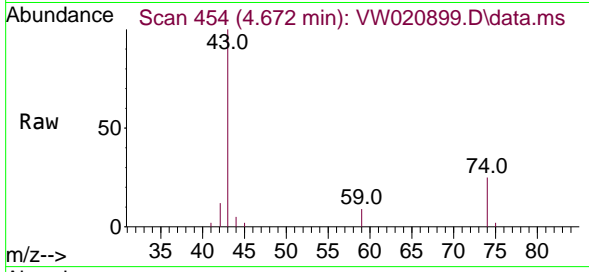
Tgt Ion: 76 Resp: 77981
 Ion Ratio Lower Upper
 76 100
 78 9.8 7.1 10.7



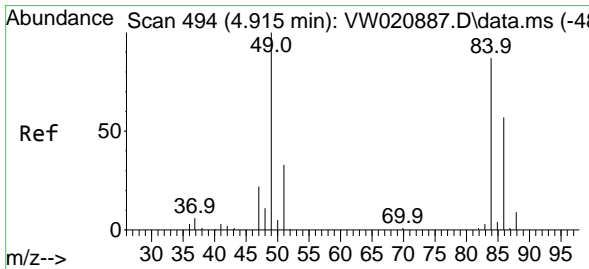
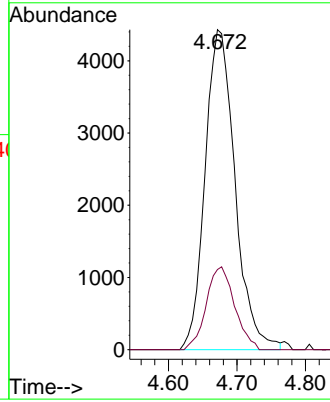
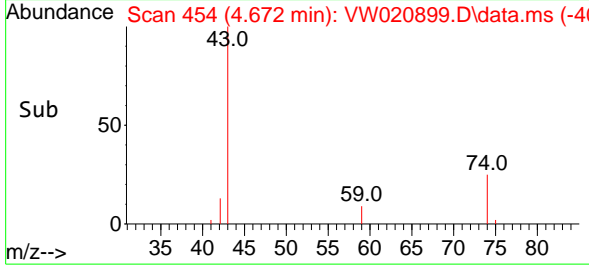


#15
 Methyl Acetate
 Concen: 23.711 ug/L
 RT: 4.672 min Scan# 411
 Delta R.T. 0.000 min
 Lab File: VW020899.D
 Acq: 15 Nov 2021 18:20

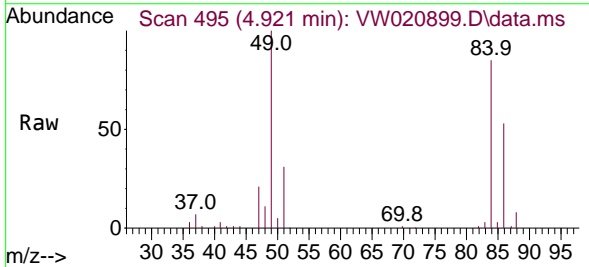
Instrument :
 MSVOA_W
 ClientSampleId :



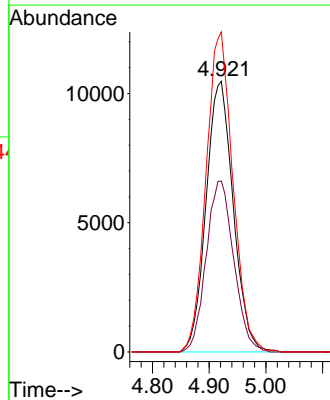
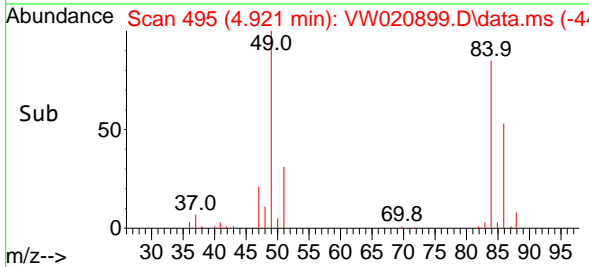
Tgt Ion: 43 Resp: 13462
 Ion Ratio Lower Upper
 43 100
 74 24.5 16.4 24.6

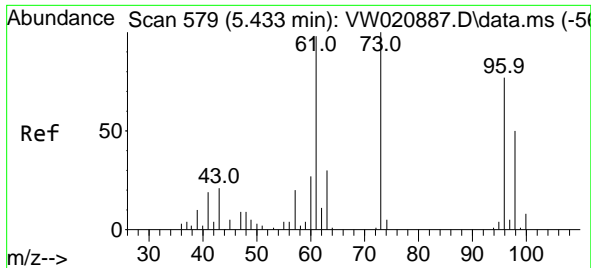


#16
 Methylene chloride
 Concen: 20.429 ug/L
 RT: 4.921 min Scan# 495
 Delta R.T. 0.006 min
 Lab File: VW020899.D
 Acq: 15 Nov 2021 18:20



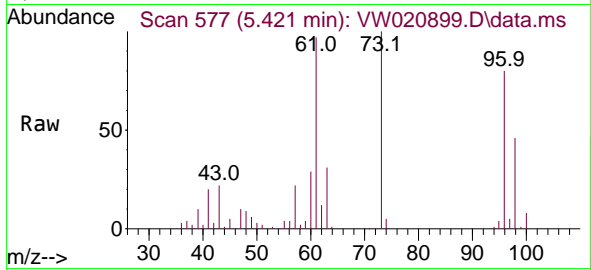
Tgt Ion: 84 Resp: 34896
 Ion Ratio Lower Upper
 84 100
 86 63.1 45.5 84.5
 49 118.2 100.5 186.7



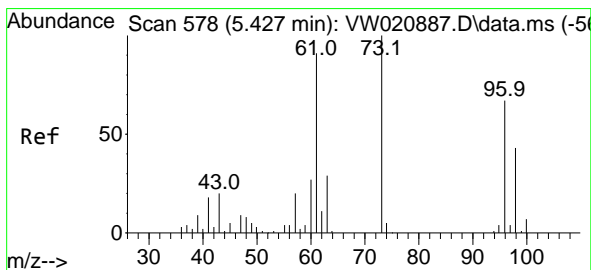
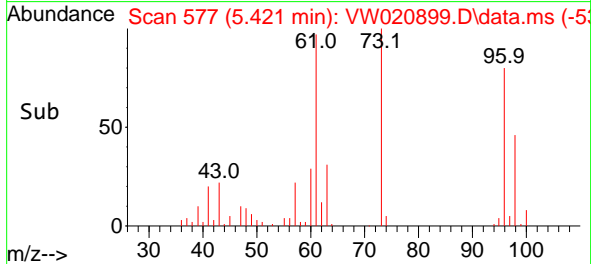
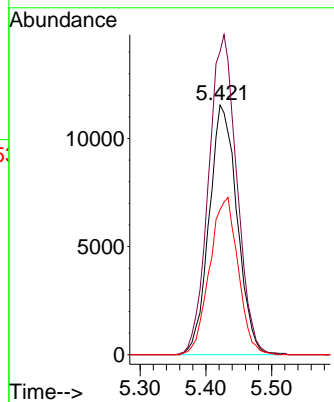


#17
 trans-1,2-Dichloroethene
 Concen: 20.698 ug/L
 RT: 5.421 min Scan# 577
 Delta R.T. -0.012 min
 Lab File: VW020899.D
 Acq: 15 Nov 2021 18:20

Instrument : MSVOA_W
 ClientSampleId :

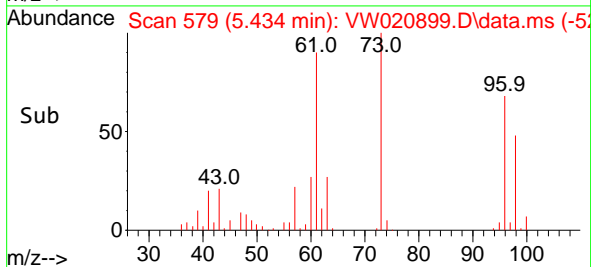
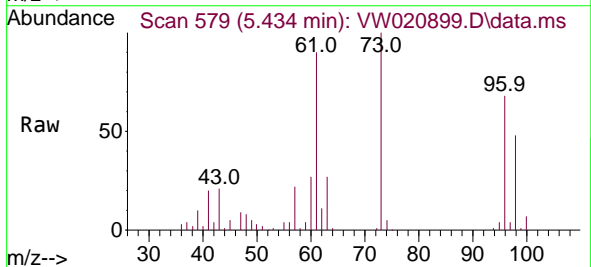
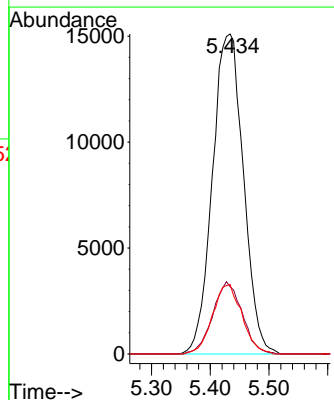


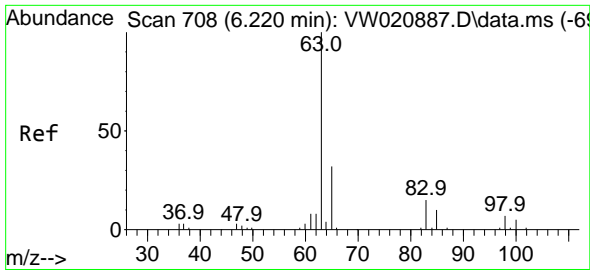
Tgt Ion: 96 Resp: 34231
 Ion Ratio Lower Upper
 96 100
 61 121.4 107.4 199.4
 98 58.1 41.2 76.6



#18
 Methyl tert-butyl Ether
 Concen: 22.285 ug/L
 RT: 5.434 min Scan# 579
 Delta R.T. 0.006 min
 Lab File: VW020899.D
 Acq: 15 Nov 2021 18:20

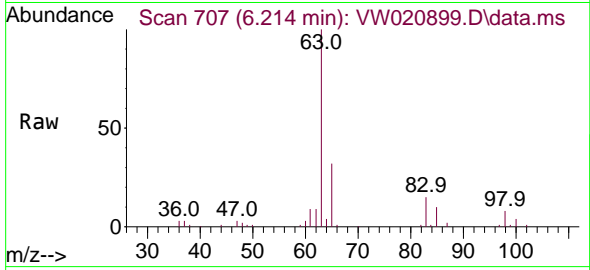
Tgt Ion: 73 Resp: 55324
 Ion Ratio Lower Upper
 73 100
 43 21.4 19.5 29.3
 57 20.7 19.3 28.9



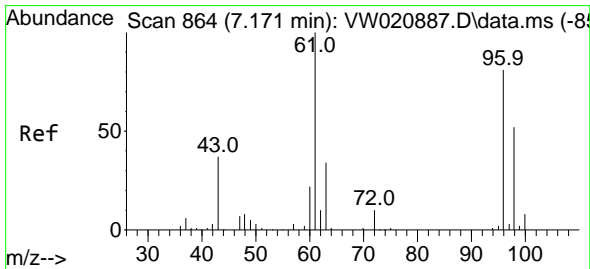
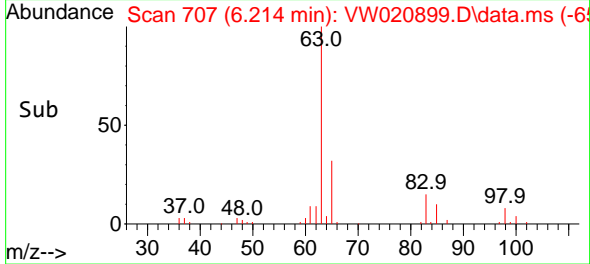
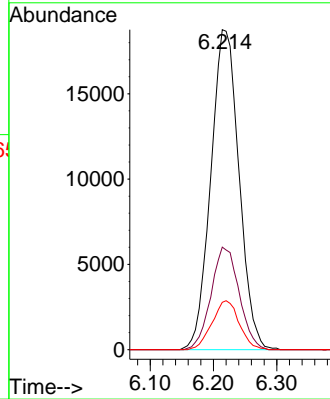


#19
 1,1-Dichloroethane
 Concen: 21.185 ug/L
 RT: 6.214 min Scan# 707
 Delta R.T. -0.006 min
 Lab File: VW020899.D
 Acq: 15 Nov 2021 18:20

Instrument :
 MSVOA_W
 ClientSampled :

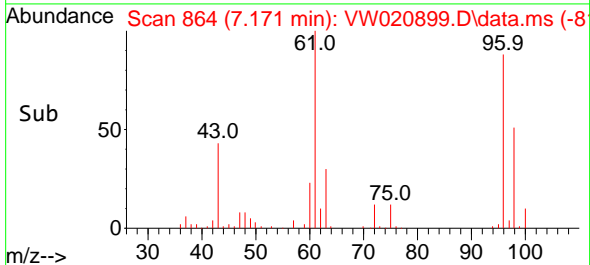
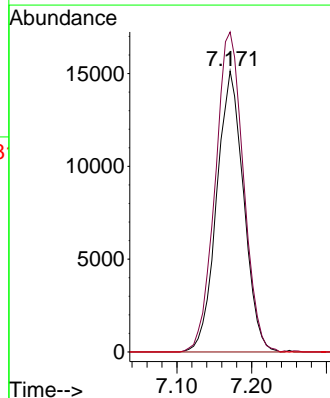
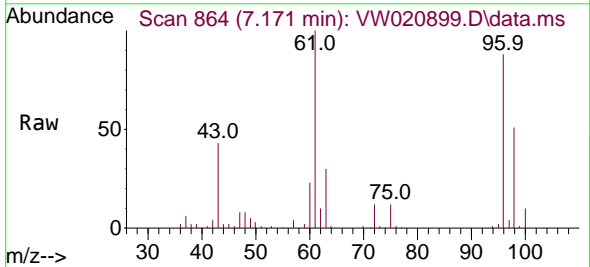


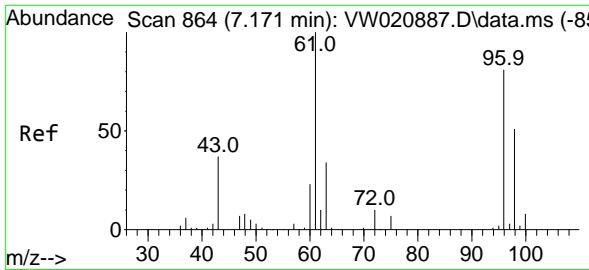
Tgt Ion: 63 Resp: 58053
 Ion Ratio Lower Upper
 63 100
 65 32.0 22.1 41.1
 83 14.8 9.2 17.2



#20
 cis-1,2-Dichloroethene
 Concen: 21.315 ug/L
 RT: 7.171 min Scan# 864
 Delta R.T. 0.000 min
 Lab File: VW020899.D
 Acq: 15 Nov 2021 18:20

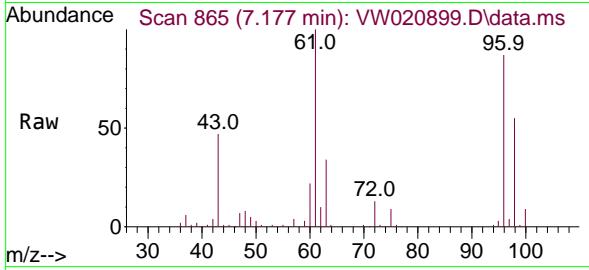
Tgt Ion: 96 Resp: 37993
 Ion Ratio Lower Upper
 96 100
 61 113.9 103.7 192.7
 68 0.0 0.0 0.0



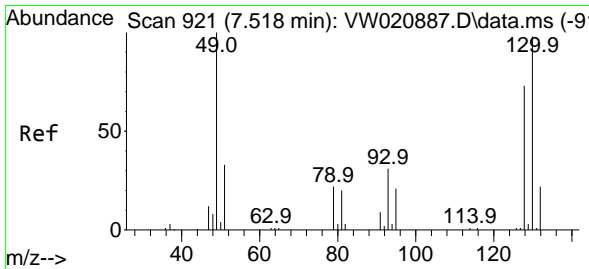
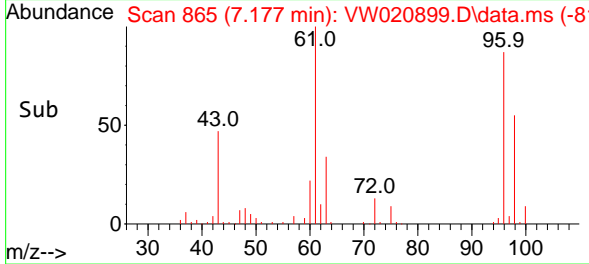
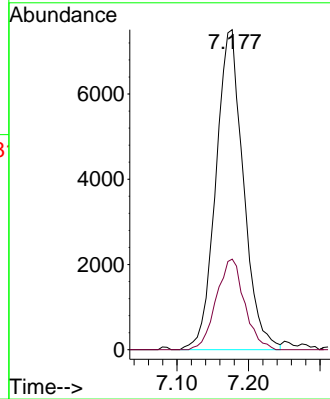


#22
 2-Butanone
 Concen: 46.665 ug/L
 RT: 7.177 min Scan# 865
 Delta R.T. 0.006 min
 Lab File: VW020899.D
 Acq: 15 Nov 2021 18:20

Instrument :
 MSVOA_W
 ClientSampleId :

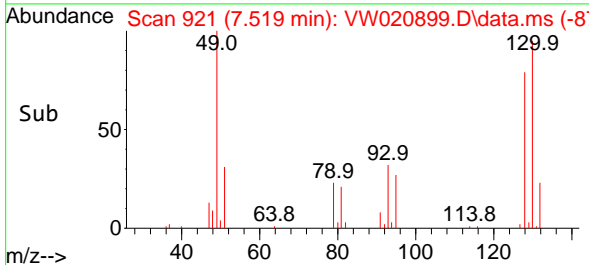
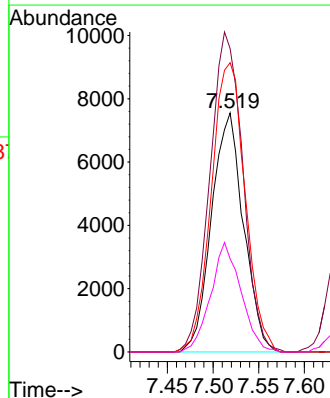
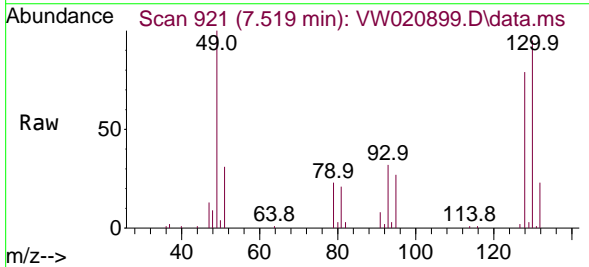


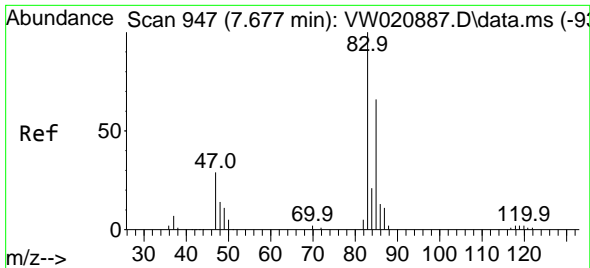
Tgt Ion: 43 Resp: 20072
 Ion Ratio Lower Upper
 43 100
 72 29.0 11.8 35.4



#23
 Bromochloromethane
 Concen: 22.536 ug/L
 RT: 7.519 min Scan# 921
 Delta R.T. 0.000 min
 Lab File: VW020899.D
 Acq: 15 Nov 2021 18:20

Tgt Ion:128 Resp: 18364
 Ion Ratio Lower Upper
 128 100
 49 126.9 150.3 279.1#
 130 121.0 88.3 163.9
 51 39.0 55.1 82.7#

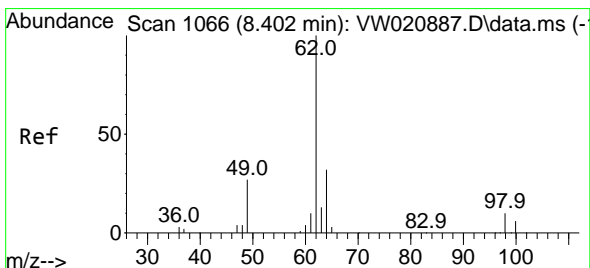
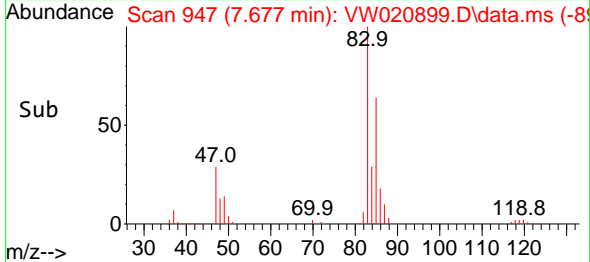
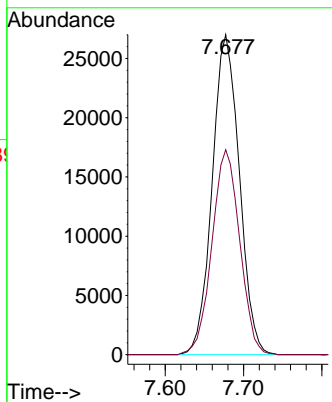
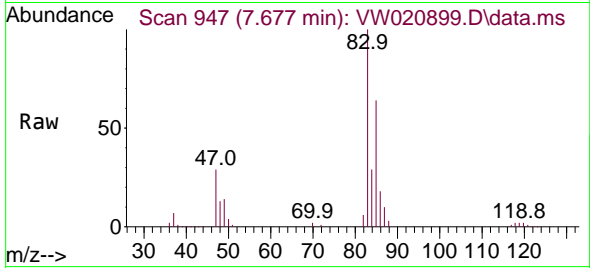




#25
 Chloroform
 Concen: 21.713 ug/L
 RT: 7.677 min Scan# 94
 Delta R.T. 0.000 min
 Lab File: VW020899.D
 Acq: 15 Nov 2021 18:20

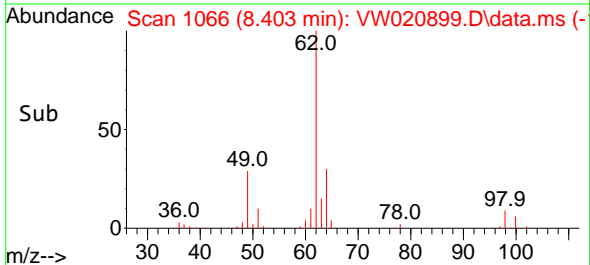
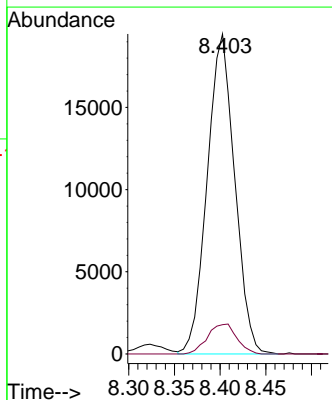
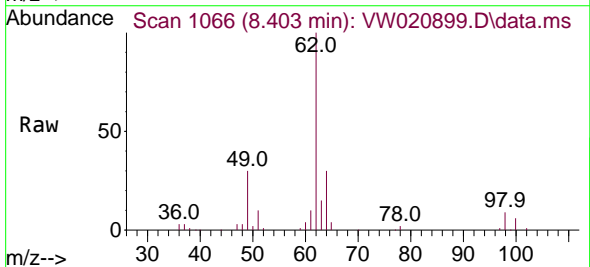
Instrument :
 MSVOA_W
 ClientSampleId :

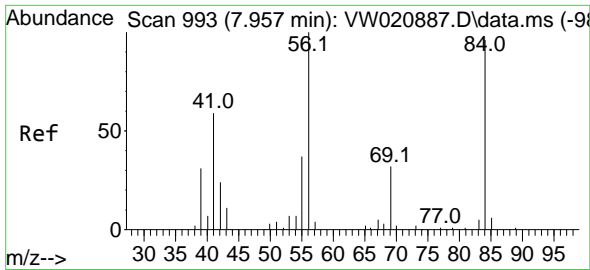
Tgt Ion: 83 Resp: 65034
 Ion Ratio Lower Upper
 83 100
 85 64.0 45.1 83.7



#27
 1,2-Dichloroethane
 Concen: 22.445 ug/L
 RT: 8.403 min Scan# 1066
 Delta R.T. 0.000 min
 Lab File: VW020899.D
 Acq: 15 Nov 2021 18:20

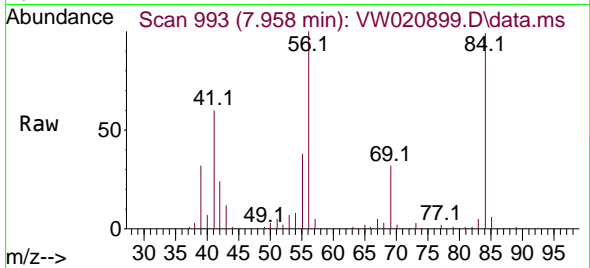
Tgt Ion: 62 Resp: 40708
 Ion Ratio Lower Upper
 62 100
 98 9.2 6.5 9.7



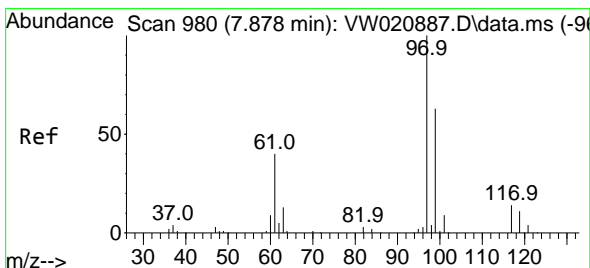
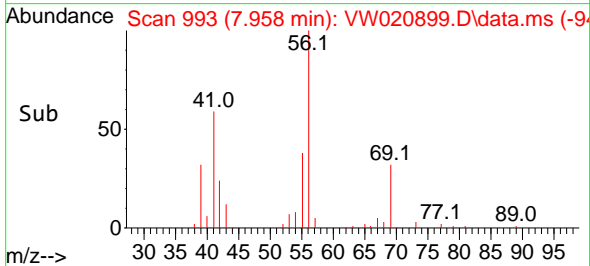
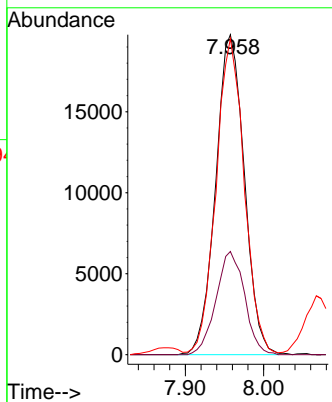


#29
 Cyclohexane
 Concen: 20.437 ug/L
 RT: 7.958 min Scan# 993
 Delta R.T. 0.000 min
 Lab File: VW020899.D
 Acq: 15 Nov 2021 18:20

Instrument :
 MSVOA_W
 ClientSampleId :

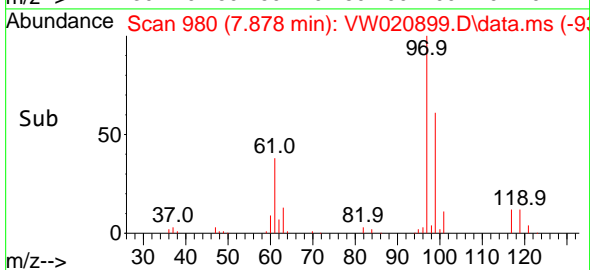
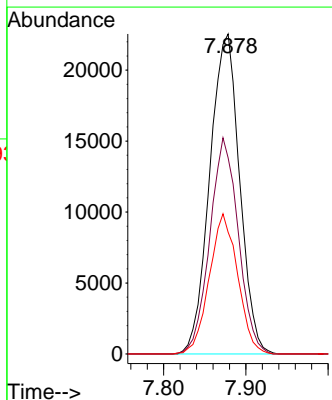
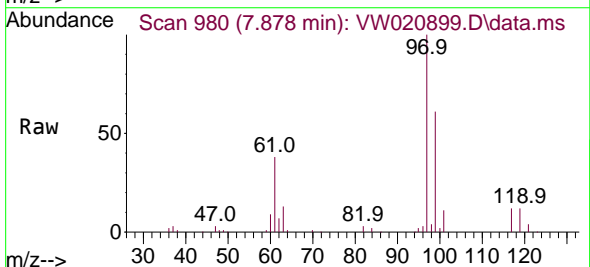


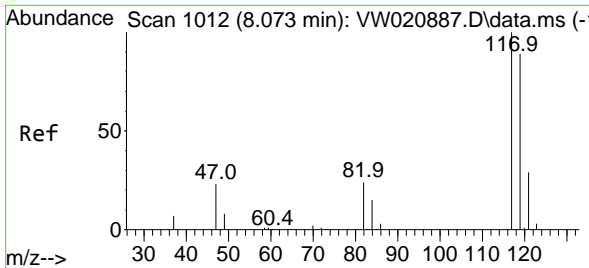
Tgt Ion: 56 Resp: 50307
 Ion Ratio Lower Upper
 56 100
 69 32.1 23.5 35.3
 84 97.2 63.4 95.2#



#30
 1,1,1-Trichloroethane
 Concen: 21.439 ug/L
 RT: 7.878 min Scan# 980
 Delta R.T. 0.000 min
 Lab File: VW020899.D
 Acq: 15 Nov 2021 18:20

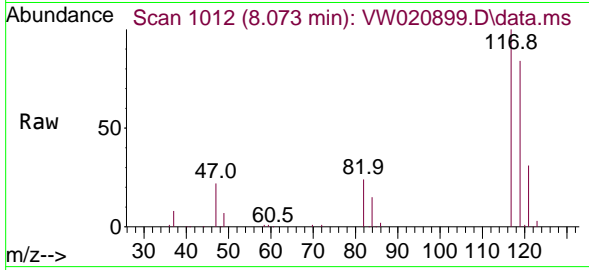
Tgt Ion: 97 Resp: 56923
 Ion Ratio Lower Upper
 97 100
 99 64.6 51.6 77.4
 61 41.6 40.9 61.3



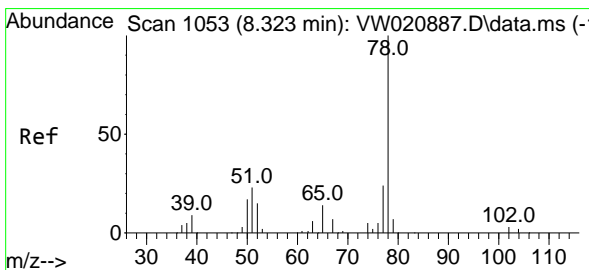
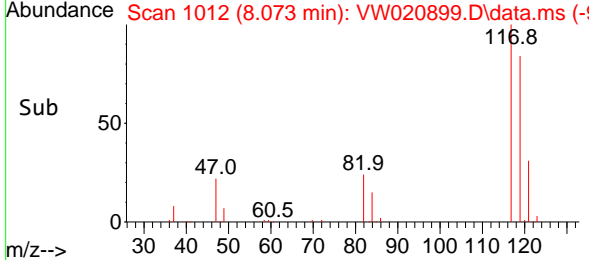
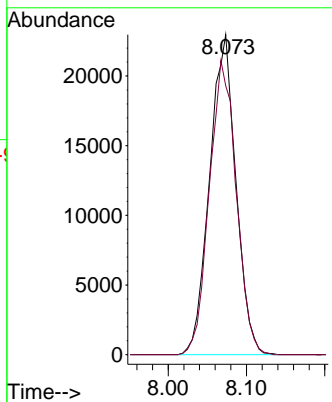


#31
 Carbon tetrachloride
 Concen: 21.362 ug/L
 RT: 8.073 min Scan# 1012
 Delta R.T. 0.000 min
 Lab File: VW020899.D
 Acq: 15 Nov 2021 18:20

Instrument :
 MSVOA_W
 ClientSampleId :

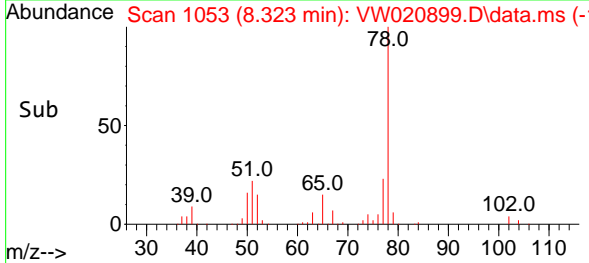
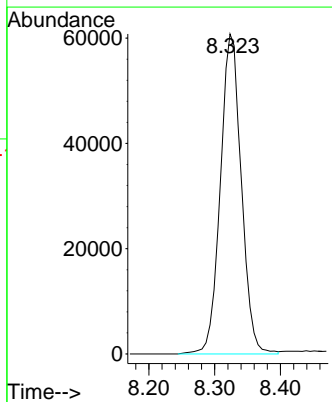
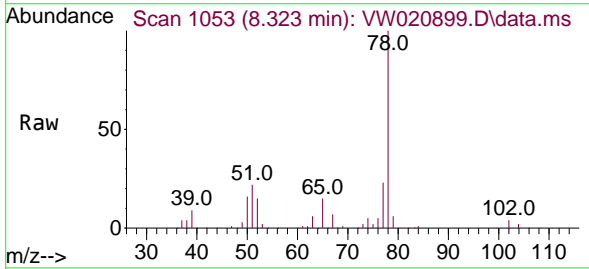


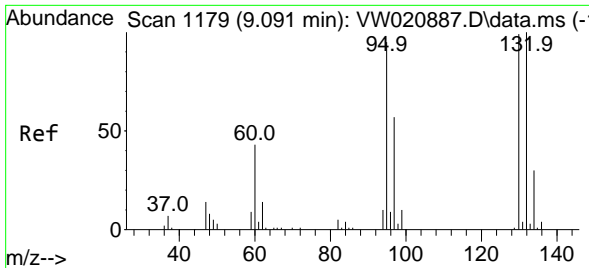
Tgt Ion:117 Resp: 53684
 Ion Ratio Lower Upper
 117 100
 119 93.9 75.7 113.5



#33
 Benzene
 Concen: 21.590 ug/L
 RT: 8.323 min Scan# 1053
 Delta R.T. 0.000 min
 Lab File: VW020899.D
 Acq: 15 Nov 2021 18:20

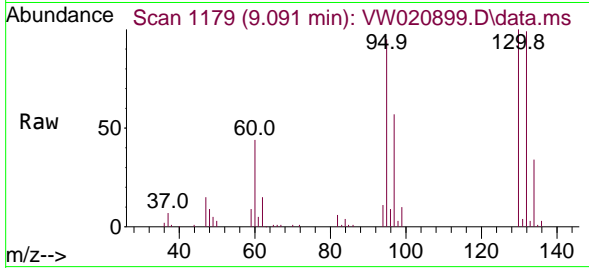
Tgt Ion: 78 Resp: 134969



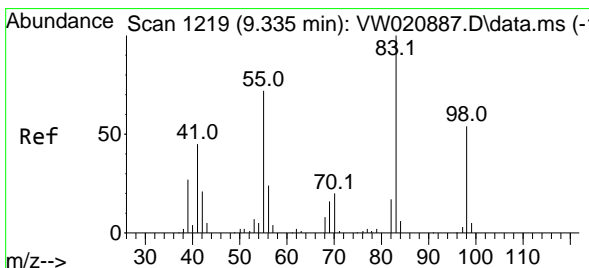
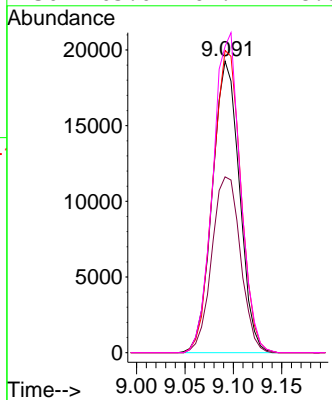
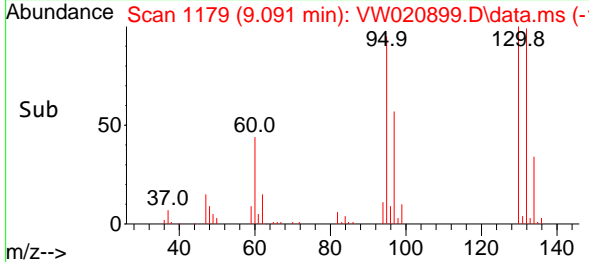


#34
 Trichloroethene
 Concen: 21.499 ug/L
 RT: 9.091 min Scan# 1179
 Delta R.T. 0.000 min
 Lab File: VW020899.D
 Acq: 15 Nov 2021 18:20

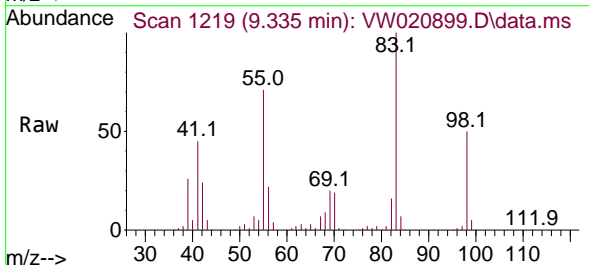
Instrument :
 MSVOA_W
 ClientSampleId :



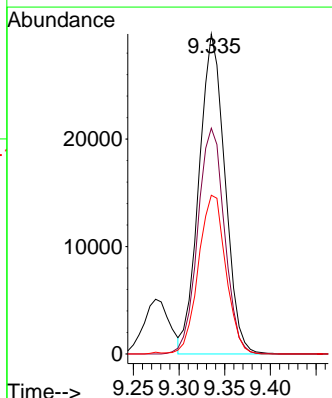
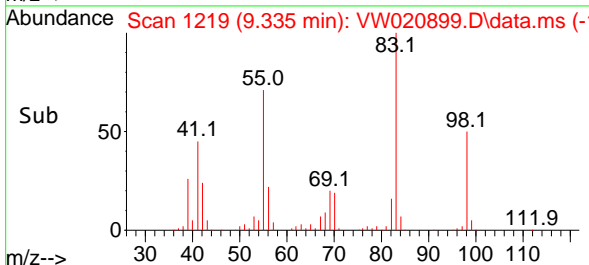
Tgt Ion: 95 Resp: 37593
 Ion Ratio Lower Upper
 95 100
 97 60.3 47.0 87.2
 132 103.7 65.5 121.6
 130 105.0 69.4 128.8

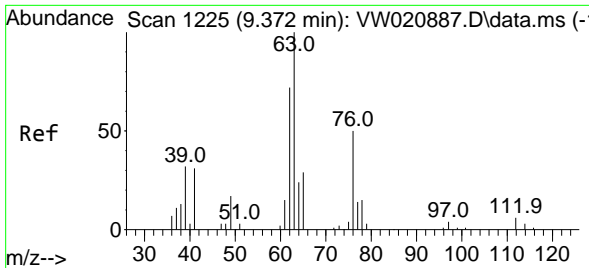


#35
 Methylcyclohexane
 Concen: 20.398 ug/L
 RT: 9.335 min Scan# 1219
 Delta R.T. 0.000 min
 Lab File: VW020899.D
 Acq: 15 Nov 2021 18:20



Tgt Ion: 83 Resp: 58805
 Ion Ratio Lower Upper
 83 100
 55 72.5 70.8 106.2
 98 52.3 37.7 56.5

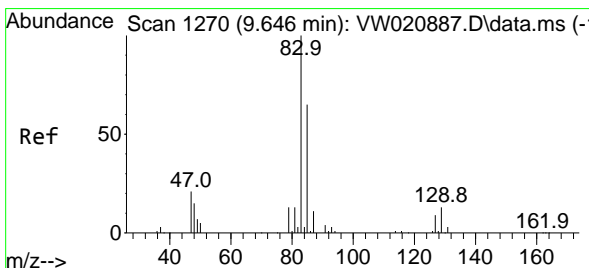
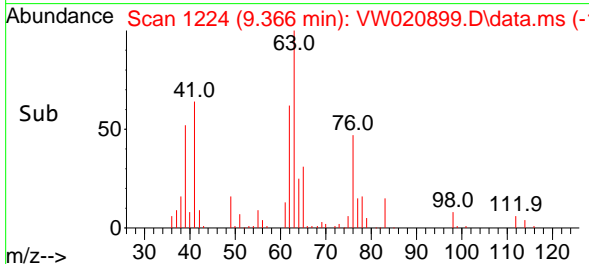
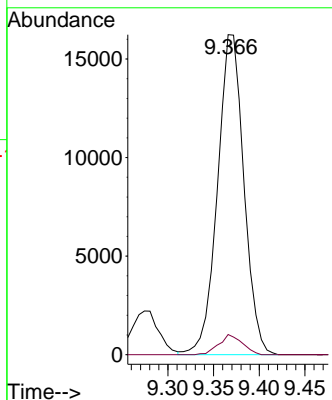
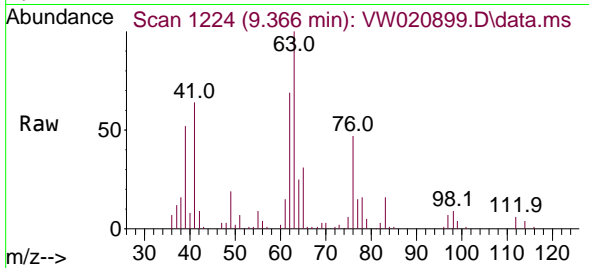




#37
 1,2-Dichloropropane
 Concen: 22.455 ug/L
 RT: 9.366 min Scan# 111
 Delta R.T. -0.006 min
 Lab File: VW020899.D
 Acq: 15 Nov 2021 18:20

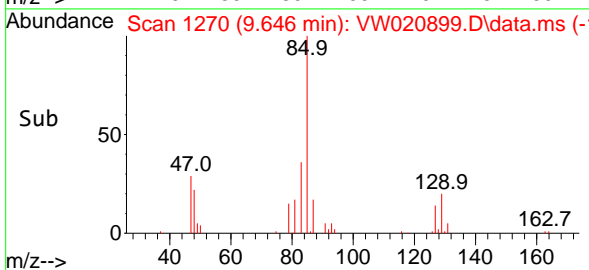
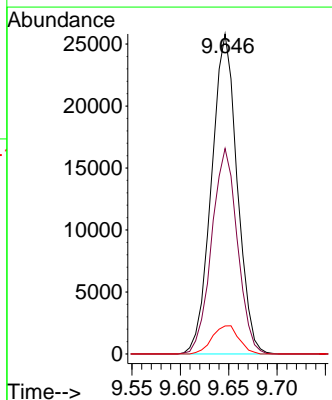
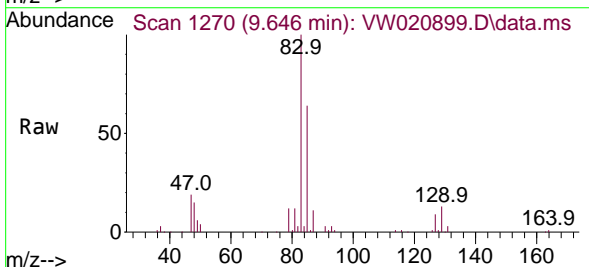
Instrument :
 MSVOA_W
 ClientSampleId :

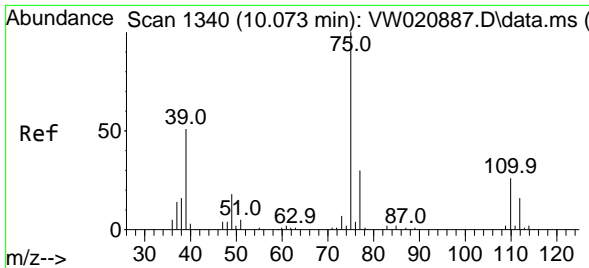
Tgt Ion: 63 Resp: 32671
 Ion Ratio Lower Upper
 63 100
 112 5.6 3.2 4.8#



#38
 Bromodichloromethane
 Concen: 22.856 ug/L
 RT: 9.646 min Scan# 1270
 Delta R.T. 0.000 min
 Lab File: VW020899.D
 Acq: 15 Nov 2021 18:20

Tgt Ion: 83 Resp: 47723
 Ion Ratio Lower Upper
 83 100
 85 64.2 44.1 81.9
 127 8.8 6.1 9.1

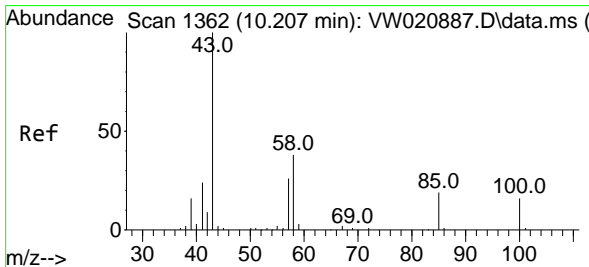
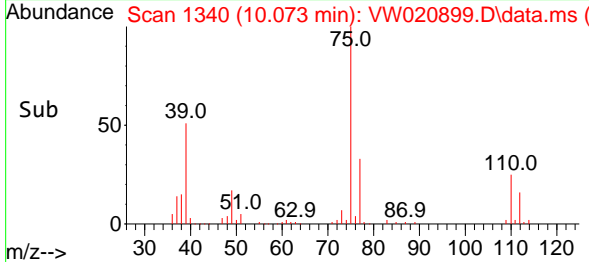
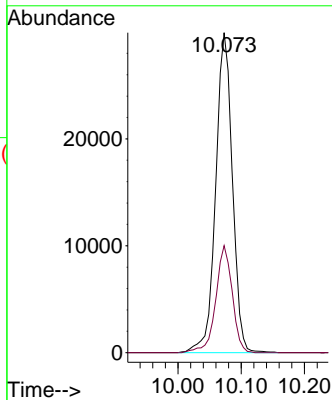
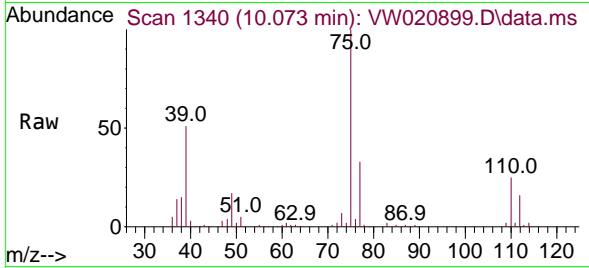




#39
 cis-1,3-Dichloropropene
 Concen: 22.806 ug/L
 RT: 10.073 min Scan# 1340
 Delta R.T. 0.000 min
 Lab File: VW020899.D
 Acq: 15 Nov 2021 18:20

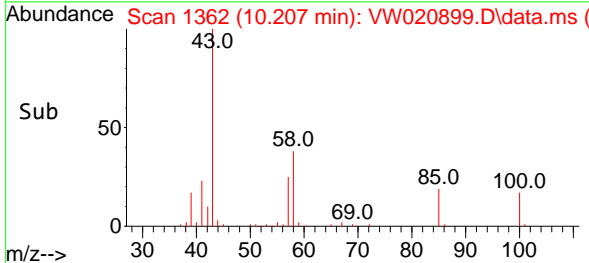
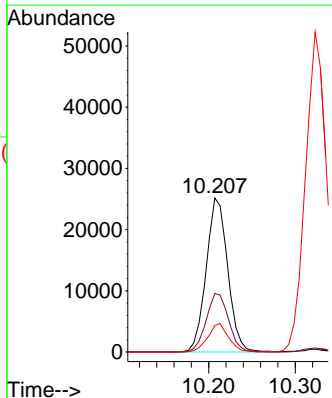
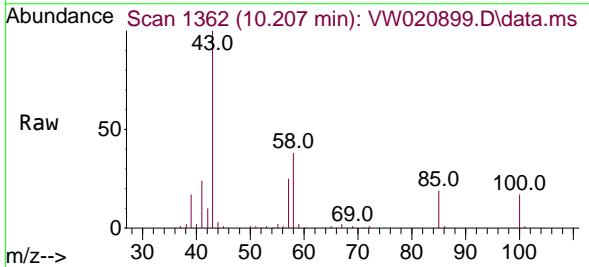
Instrument : MSVOA_W
 ClientSampleId :

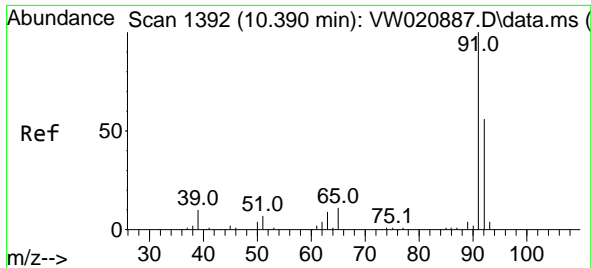
Tgt Ion: 75 Resp: 54784
 Ion Ratio Lower Upper
 75 100
 77 33.5 21.8 40.6



#40
 4-Methyl-2-pentanone
 Concen: 50.231 ug/L
 RT: 10.207 min Scan# 1362
 Delta R.T. 0.000 min
 Lab File: VW020899.D
 Acq: 15 Nov 2021 18:20

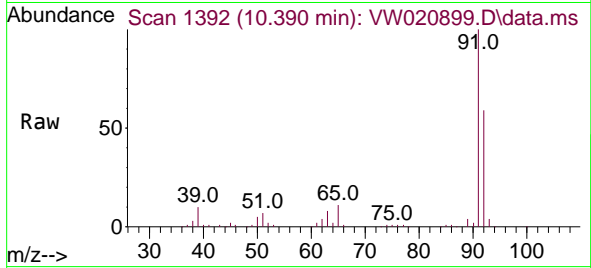
Tgt Ion: 43 Resp: 43499
 Ion Ratio Lower Upper
 43 100
 58 39.2 28.8 43.2
 100 17.7 10.0 15.0#



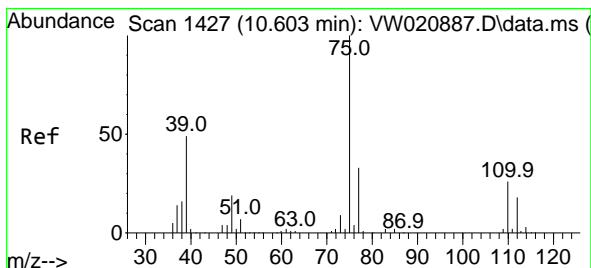
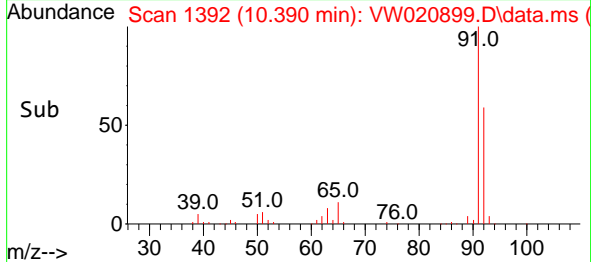
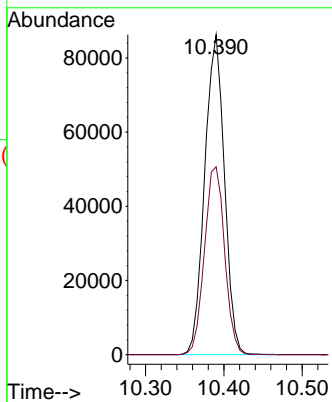


#42
 Toluene
 Concen: 21.451 ug/L
 RT: 10.390 min Scan# 11
 Delta R.T. 0.000 min
 Lab File: VW020899.D
 Acq: 15 Nov 2021 18:20

Instrument :
 MSVOA_W
 ClientSampleId :

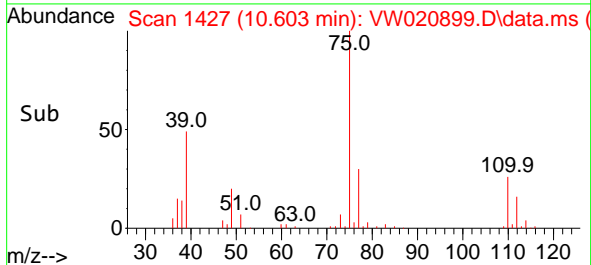
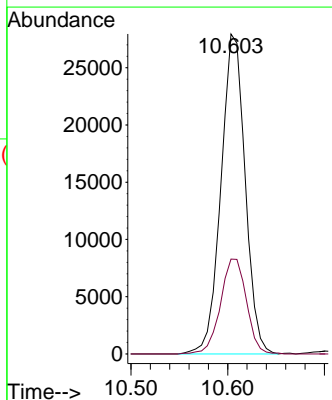
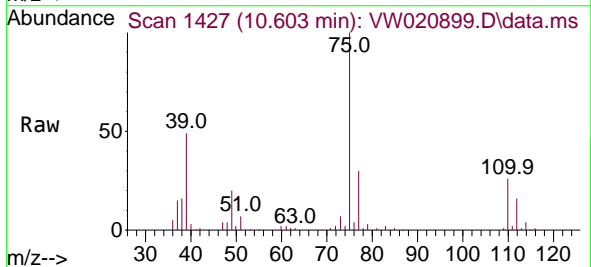


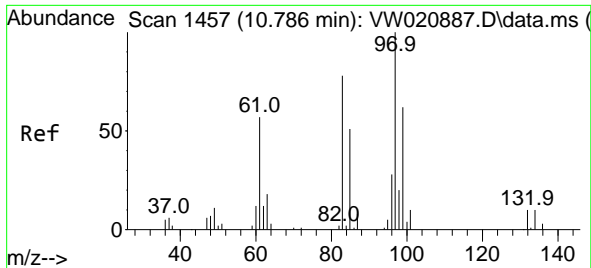
Tgt Ion: 91 Resp: 150839
 Ion Ratio Lower Upper
 91 100
 92 58.7 41.7 77.5



#44
 trans-1,3-Dichloropropene
 Concen: 22.962 ug/L
 RT: 10.603 min Scan# 1427
 Delta R.T. 0.000 min
 Lab File: VW020899.D
 Acq: 15 Nov 2021 18:20

Tgt Ion: 75 Resp: 48476
 Ion Ratio Lower Upper
 75 100
 77 29.6 22.2 41.2



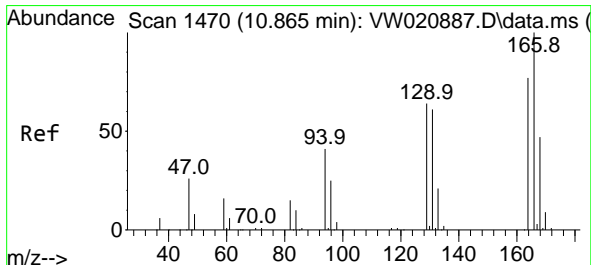
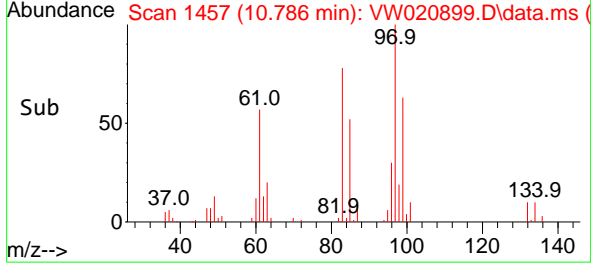
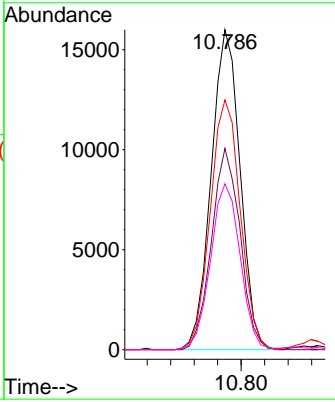
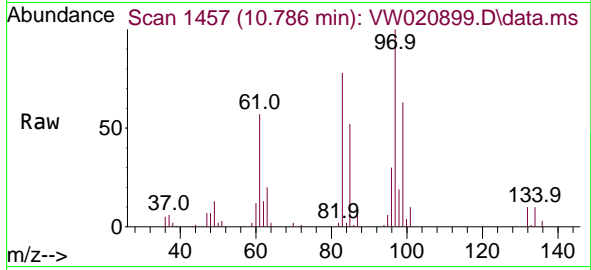


#45
 1,1,2-Trichloroethane
 Concen: 24.138 ug/L
 RT: 10.786 min Scan# 1457
 Delta R.T. 0.000 min
 Lab File: VW020899.D
 Acq: 15 Nov 2021 18:20

Instrument : MSVOA_W
 ClientSampleId :

Tgt Ion: 97 Resp: 27314

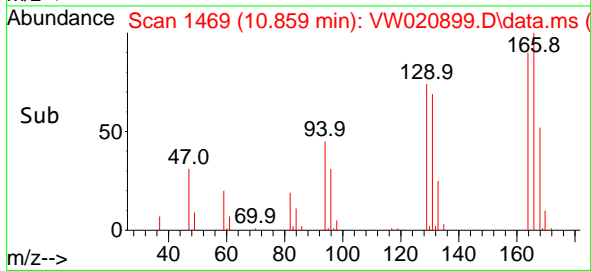
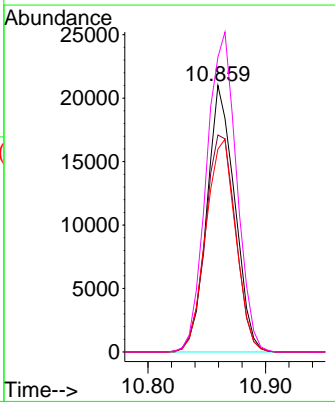
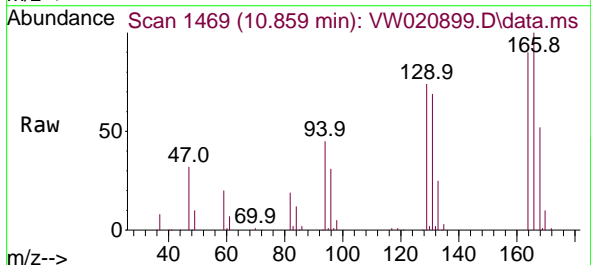
Ion	Ratio	Lower	Upper
97	100		
99	62.9	43.0	79.8
83	78.0	62.6	116.3
85	51.9	40.0	74.2

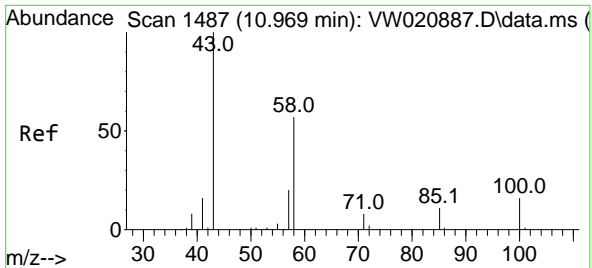


#46
 Tetrachloroethene
 Concen: 21.558 ug/L
 RT: 10.859 min Scan# 1469
 Delta R.T. -0.006 min
 Lab File: VW020899.D
 Acq: 15 Nov 2021 18:20

Tgt Ion: 164 Resp: 34612

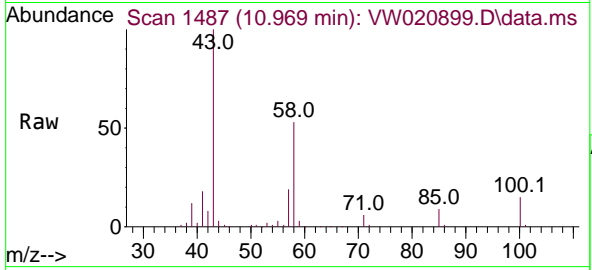
Ion	Ratio	Lower	Upper
164	100		
129	81.4	65.5	121.7
131	76.2	59.7	110.9
166	110.6	88.7	164.7





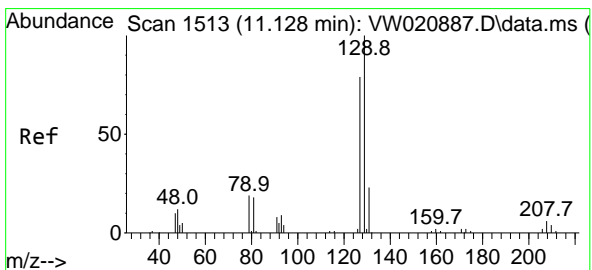
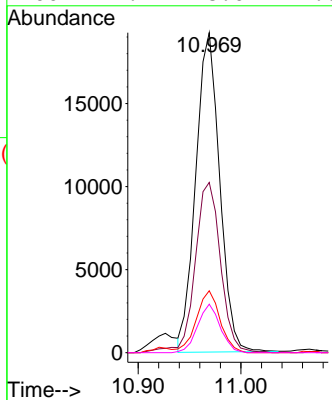
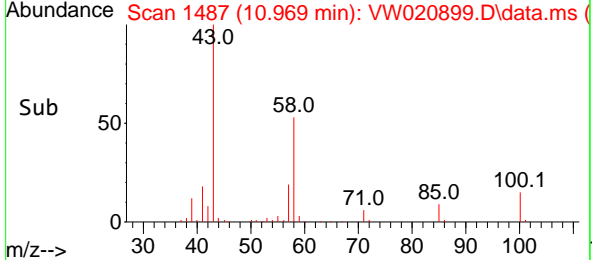
#48
 2-Hexanone
 Concen: 51.987 ug/L
 RT: 10.969 min Scan# 1487
 Delta R.T. 0.000 min
 Lab File: VW020899.D
 Acq: 15 Nov 2021 18:20

Instrument : MSVOA_W
 ClientSampleId :

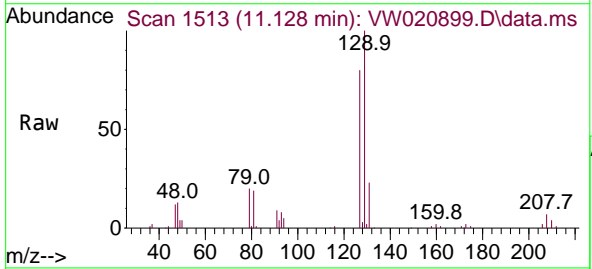


Tgt Ion: 43 Resp: 31184

Ion	Ratio	Lower	Upper
43	100		
58	54.5	40.2	60.2
57	19.4	14.3	21.5
100	14.4	8.0	12.0

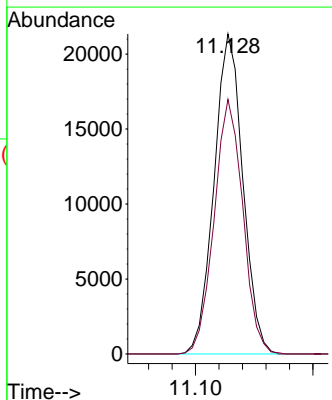
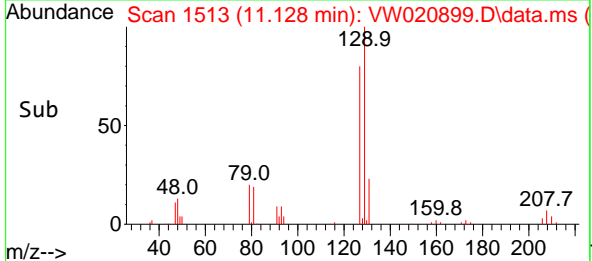


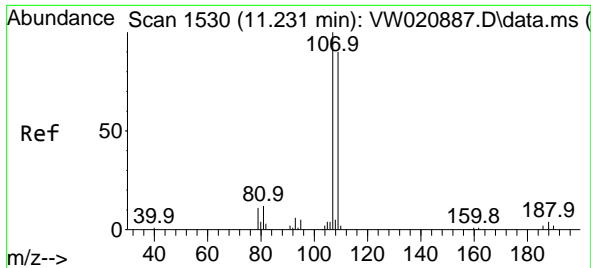
#49
 Dibromochloromethane
 Concen: 23.323 ug/L
 RT: 11.128 min Scan# 1513
 Delta R.T. 0.000 min
 Lab File: VW020899.D
 Acq: 15 Nov 2021 18:20



Tgt Ion: 129 Resp: 36384

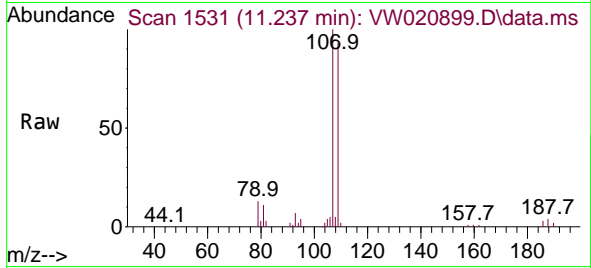
Ion	Ratio	Lower	Upper
129	100		
127	79.6	55.7	103.5



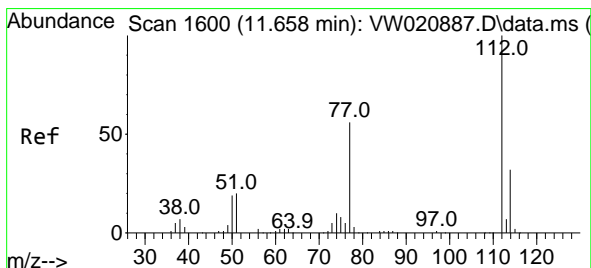
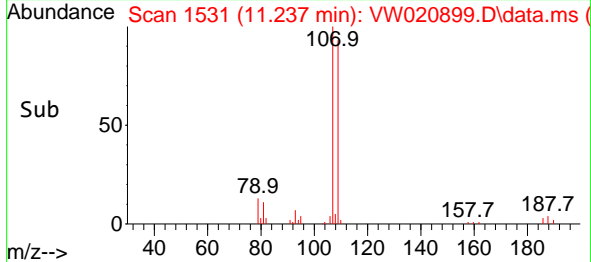
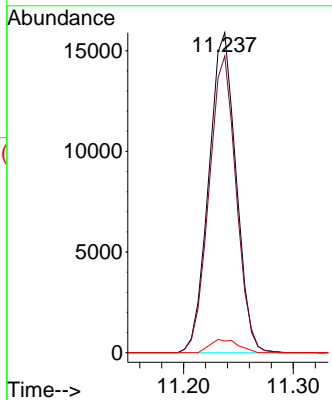


#50
 1,2-Dibromoethane
 Concen: 24.247 ug/L
 RT: 11.237 min Scan# 11
 Delta R.T. 0.006 min
 Lab File: VW020899.D
 Acq: 15 Nov 2021 18:20

Instrument :
 MSVOA_W
 ClientSampleId :

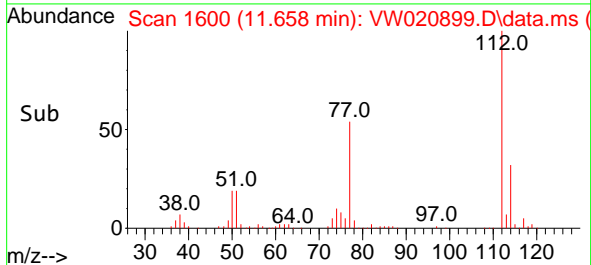
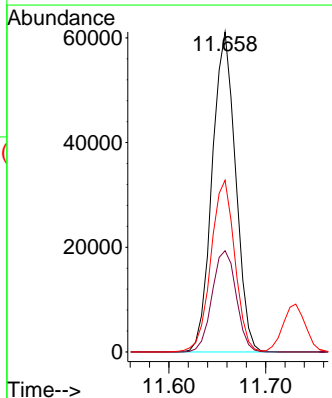
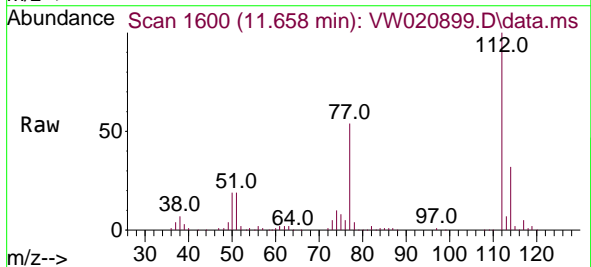


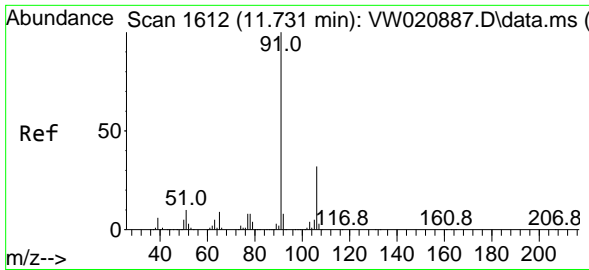
Tgt Ion:107 Resp: 27508
 Ion Ratio Lower Upper
 107 100
 109 92.7 64.1 119.1
 188 3.6 2.6 3.8



#51
 Chlorobenzene
 Concen: 21.965 ug/L
 RT: 11.658 min Scan# 1600
 Delta R.T. 0.000 min
 Lab File: VW020899.D
 Acq: 15 Nov 2021 18:20

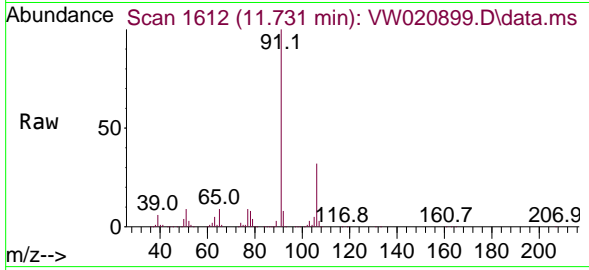
Tgt Ion:112 Resp: 102726
 Ion Ratio Lower Upper
 112 100
 114 31.6 22.4 41.6
 77 53.6 50.2 75.4



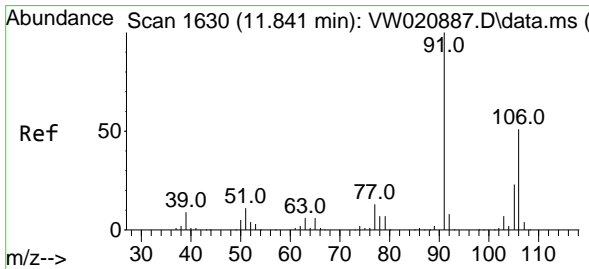
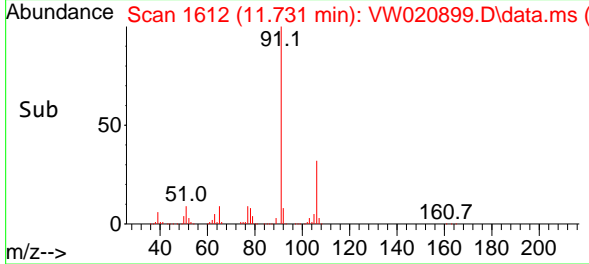
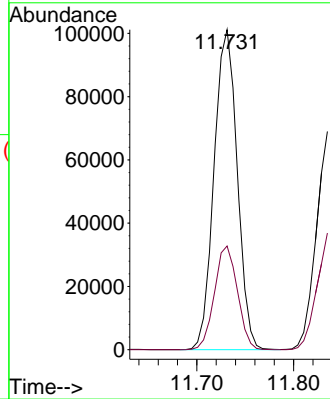


#52
 Ethylbenzene
 Concen: 21.578 ug/L
 RT: 11.731 min Scan# 1612
 Delta R.T. 0.000 min
 Lab File: VW020899.D
 Acq: 15 Nov 2021 18:20

Instrument :
 MSVOA_W
 ClientSampleId :

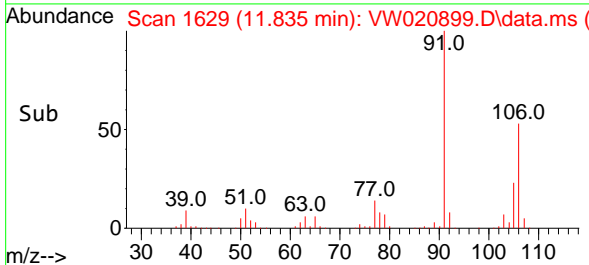
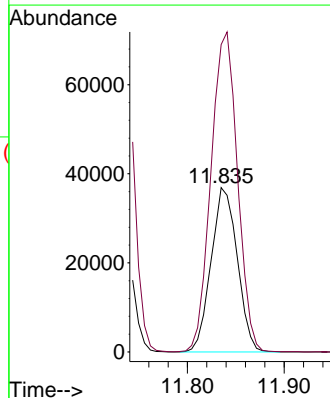
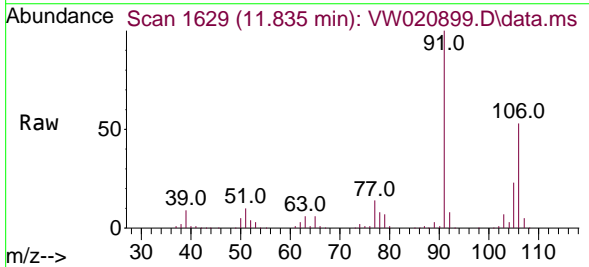


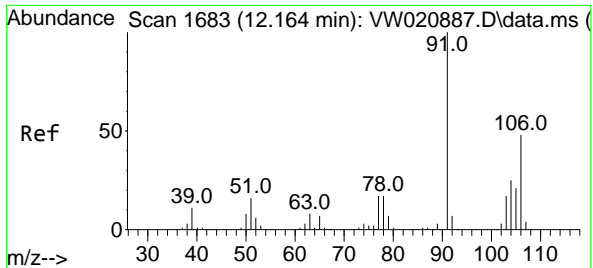
Tgt Ion: 91 Resp: 168131
 Ion Ratio Lower Upper
 91 100
 106 32.4 21.5 39.9



#53
 m,p-Xylene
 Concen: 21.793 ug/L
 RT: 11.835 min Scan# 1629
 Delta R.T. -0.006 min
 Lab File: VW020899.D
 Acq: 15 Nov 2021 18:20

Tgt Ion: 106 Resp: 69328
 Ion Ratio Lower Upper
 106 100
 91 187.1 149.9 278.3

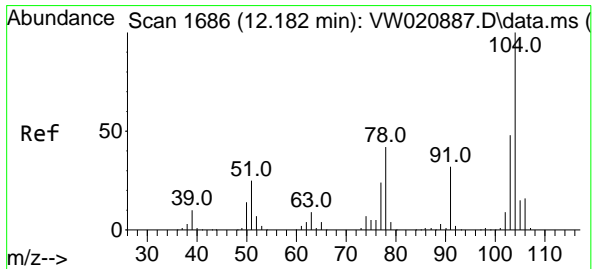
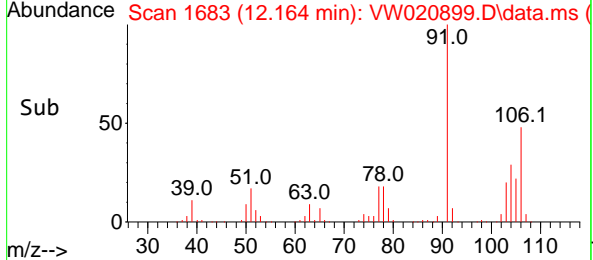
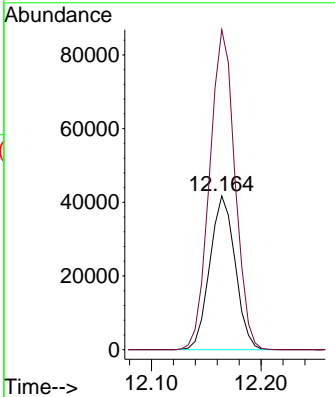
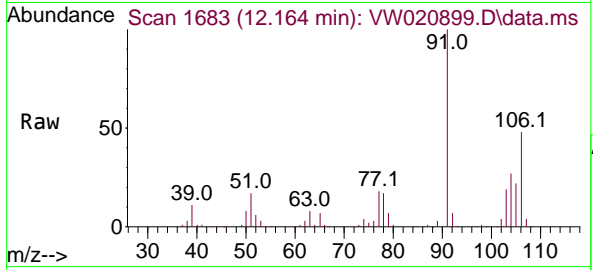




#54
 o-Xylene
 Concen: 21.960 ug/L
 RT: 12.164 min Scan# 1683
 Delta R.T. 0.000 min
 Lab File: VW020899.D
 Acq: 15 Nov 2021 18:20

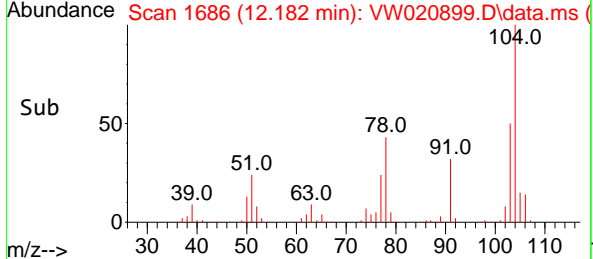
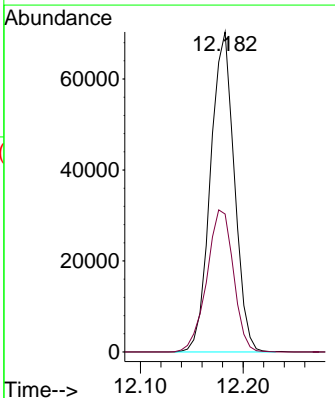
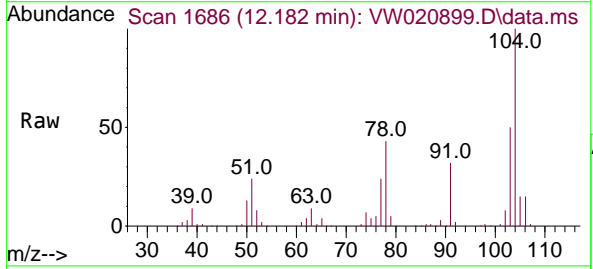
Instrument : MSVOA_W
 ClientSampled :

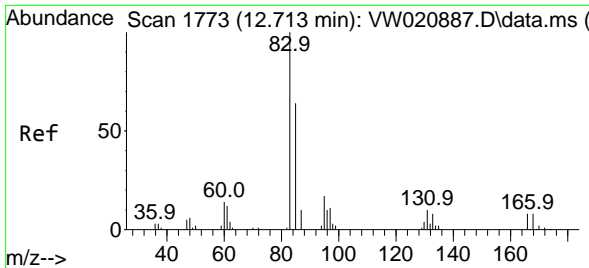
Tgt Ion:106 Resp: 67091
 Ion Ratio Lower Upper
 106 100
 91 208.1 153.6 285.3



#55
 Styrene
 Concen: 22.285 ug/L
 RT: 12.182 min Scan# 1686
 Delta R.T. 0.000 min
 Lab File: VW020899.D
 Acq: 15 Nov 2021 18:20

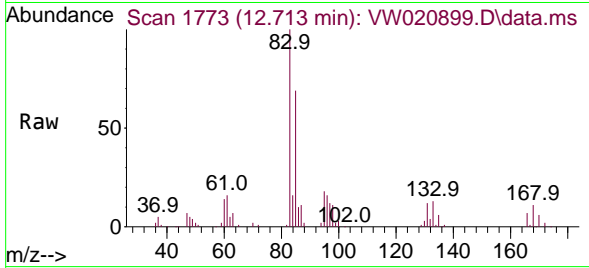
Tgt Ion:104 Resp: 113051
 Ion Ratio Lower Upper
 104 100
 78 43.1 34.4 64.0



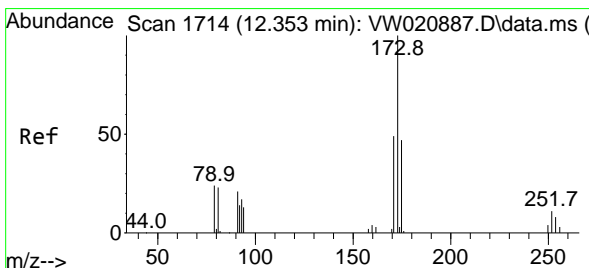
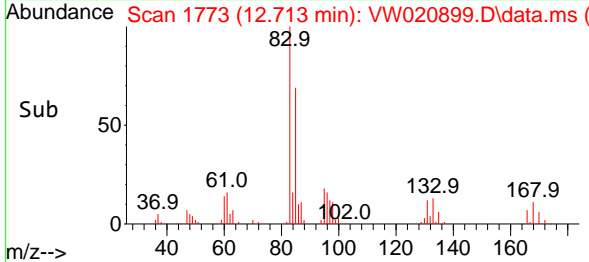
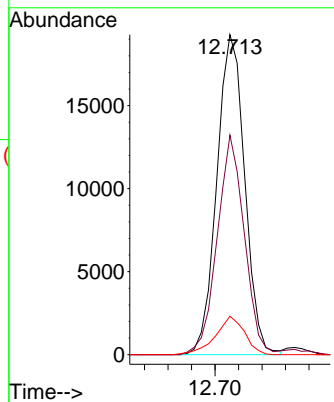


#57
 1,1,2,2-Tetrachloroethane
 Concen: 25.358 ug/L
 RT: 12.713 min Scan# 1773
 Delta R.T. 0.000 min
 Lab File: VW020899.D
 Acq: 15 Nov 2021 18:20

Instrument : MSVOA_W
 ClientSampleId :

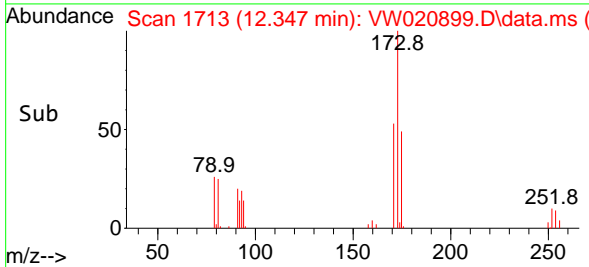
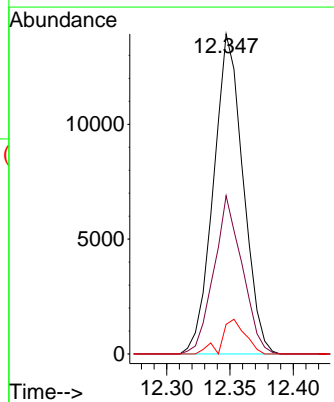
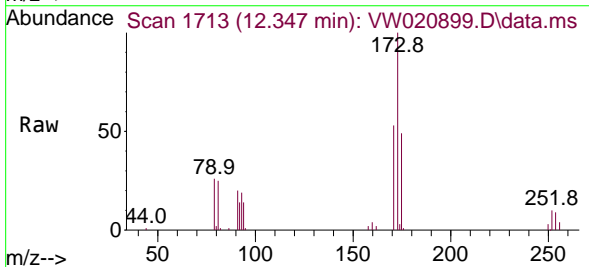


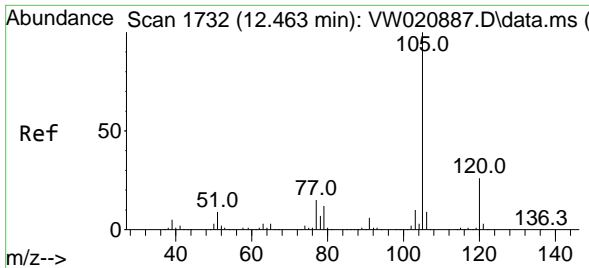
Tgt Ion: 83 Resp: 31803
 Ion Ratio Lower Upper
 83 100
 85 68.6 44.0 81.6
 131 12.0 6.9 10.3#



#59
 Bromoform
 Concen: 24.229 ug/L
 RT: 12.347 min Scan# 1713
 Delta R.T. -0.006 min
 Lab File: VW020899.D
 Acq: 15 Nov 2021 18:20

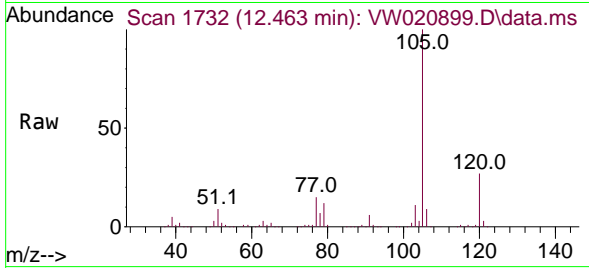
Tgt Ion: 173 Resp: 22681
 Ion Ratio Lower Upper
 173 100
 175 47.3 39.6 59.4
 254 7.5 7.4 11.0



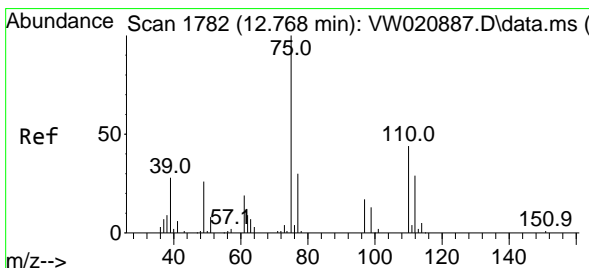
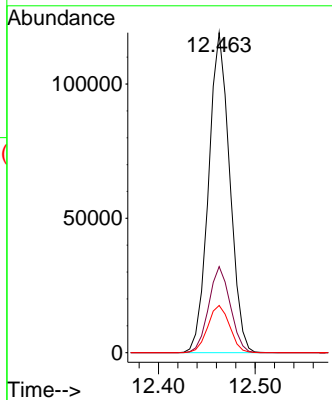
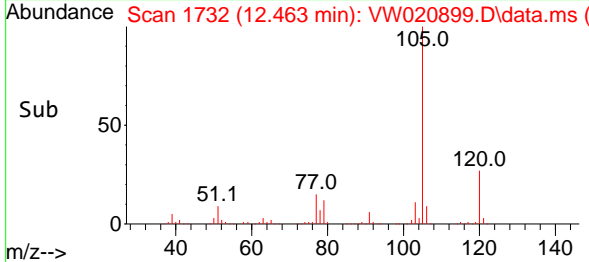


#60
 Isopropylbenzene
 Concen: 21.154 ug/L
 RT: 12.463 min Scan# 1732
 Delta R.T. 0.000 min
 Lab File: VW020899.D
 Acq: 15 Nov 2021 18:20

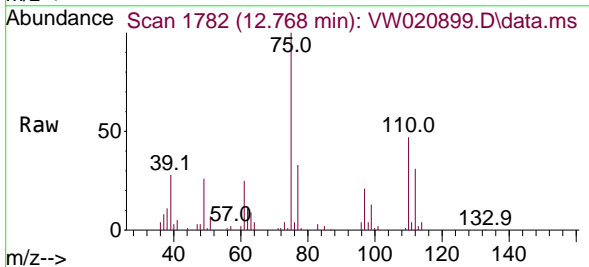
Instrument :
 MSVOA_W
 ClientSampleId :



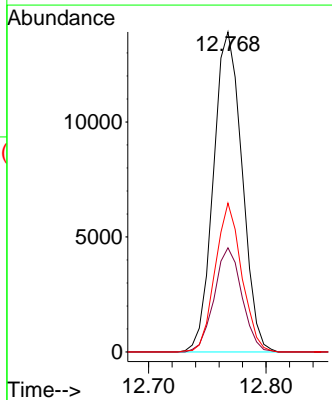
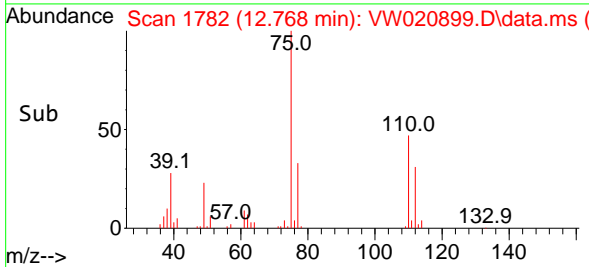
Tgt Ion:105 Resp: 180889
 Ion Ratio Lower Upper
 105 100
 120 27.4 20.1 30.1
 77 15.3 13.8 20.8

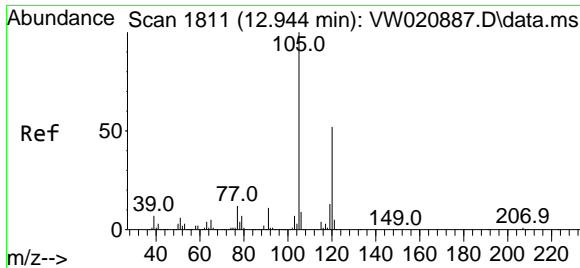


#61
 1,2,3-Trichloropropane
 Concen: 25.614 ug/L
 RT: 12.768 min Scan# 1782
 Delta R.T. 0.000 min
 Lab File: VW020899.D
 Acq: 15 Nov 2021 18:20



Tgt Ion: 75 Resp: 23588
 Ion Ratio Lower Upper
 75 100
 77 31.4 25.8 38.8
 110 43.1 29.0 43.4

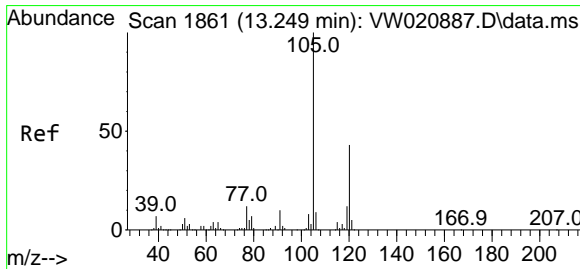
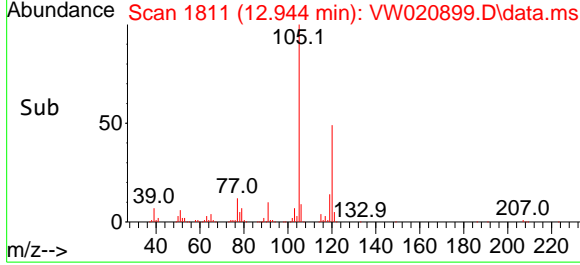
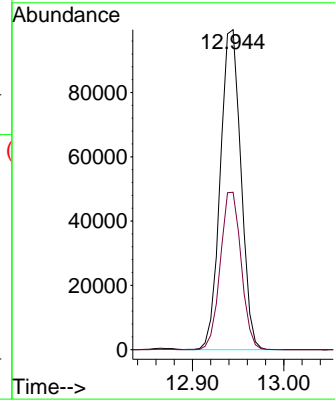
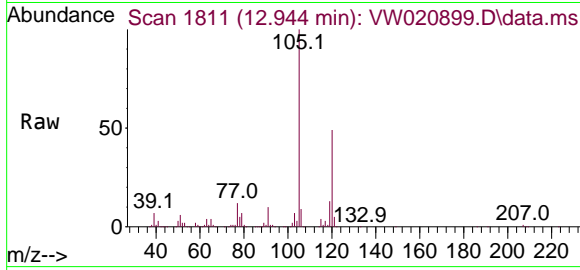




#62
 1,3,5-Trimethylbenzene
 Concen: 21.695 ug/L
 RT: 12.944 min Scan# 1811
 Delta R.T. 0.000 min
 Lab File: VW020899.D
 Acq: 15 Nov 2021 18:20

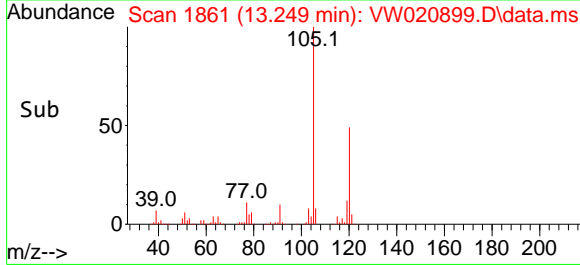
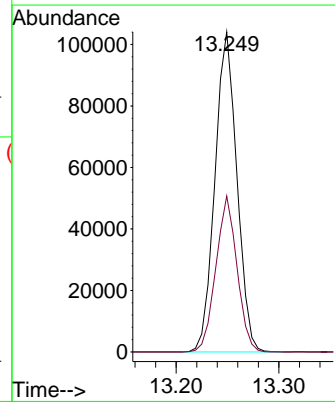
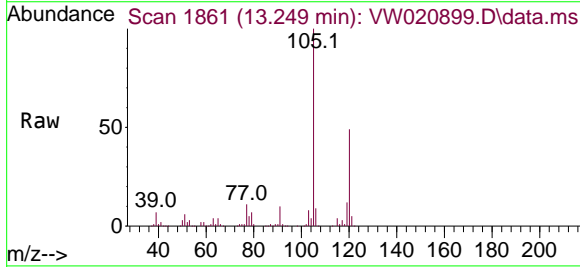
Instrument :
 MSVOA_W
 ClientSampleId :

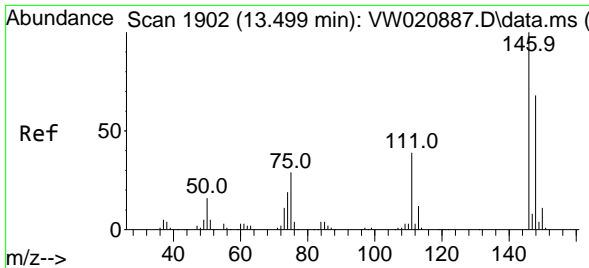
Tgt Ion:105 Resp: 156498
 Ion Ratio Lower Upper
 105 100
 120 49.7 37.4 56.2



#63
 1,2,4-Trimethylbenzene
 Concen: 21.719 ug/L
 RT: 13.249 min Scan# 1861
 Delta R.T. 0.000 min
 Lab File: VW020899.D
 Acq: 15 Nov 2021 18:20

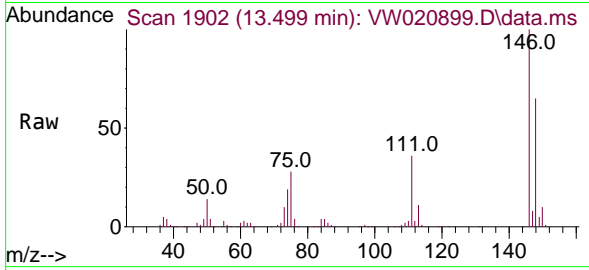
Tgt Ion:105 Resp: 154577
 Ion Ratio Lower Upper
 105 100
 120 46.8 35.0 52.6



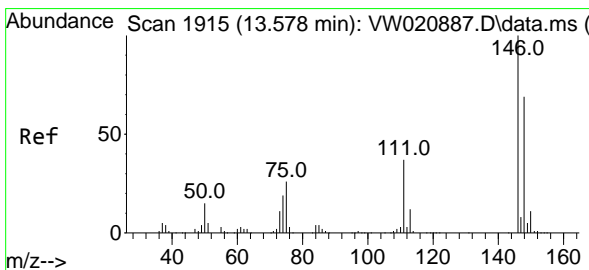
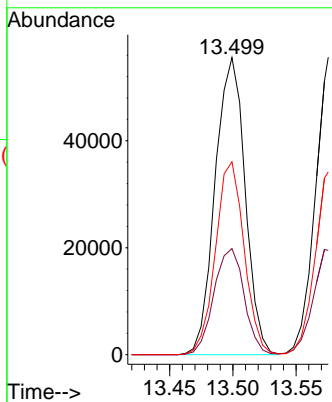
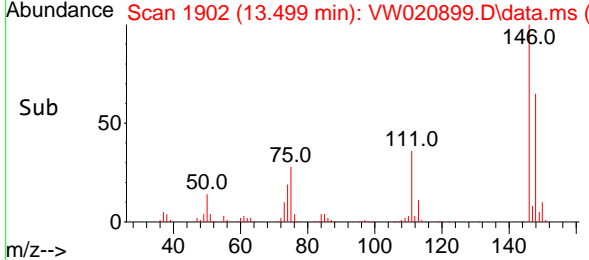


#64
 1,3-Dichlorobenzene
 Concen: 22.819 ug/L
 RT: 13.499 min Scan# 1902
 Delta R.T. 0.000 min
 Lab File: VW020899.D
 Acq: 15 Nov 2021 18:20

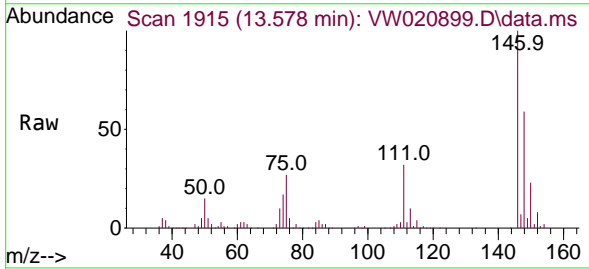
Instrument :
 MSVOA_W
 ClientSampleId :



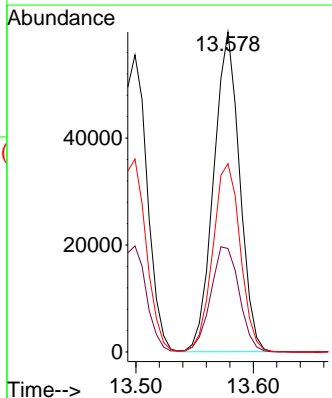
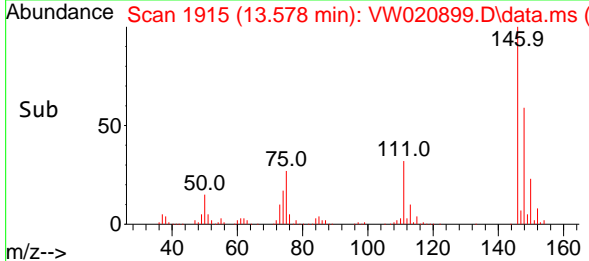
Tgt Ion:146 Resp: 91482
 Ion Ratio Lower Upper
 146 100
 111 35.7 29.8 55.3
 148 64.9 46.2 85.8

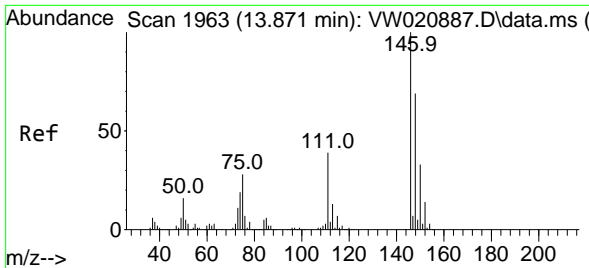


#65
 1,4-Dichlorobenzene
 Concen: 22.707 ug/L
 RT: 13.578 min Scan# 1915
 Delta R.T. 0.000 min
 Lab File: VW020899.D
 Acq: 15 Nov 2021 18:20



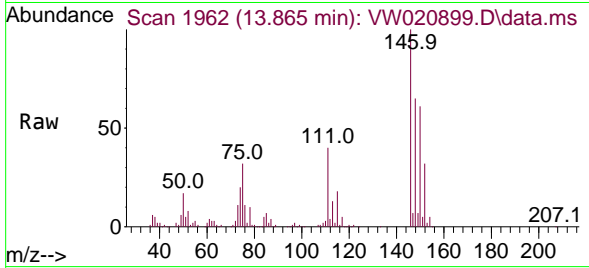
Tgt Ion:146 Resp: 91828
 Ion Ratio Lower Upper
 146 100
 111 32.3 29.0 53.9
 148 58.9 46.9 87.1



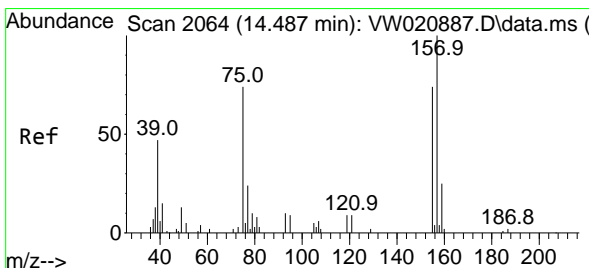
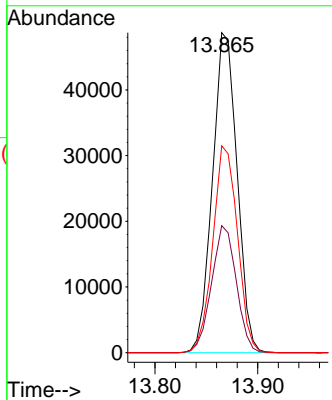
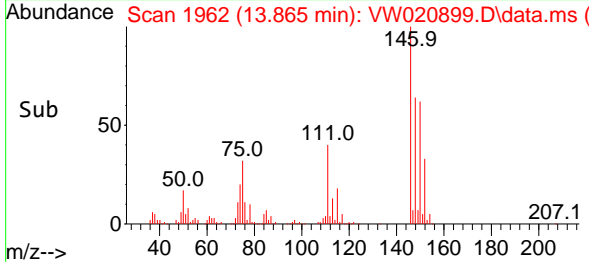


#67
 1,2-Dichlorobenzene
 Concen: 22.930 ug/L
 RT: 13.865 min Scan# 1962
 Delta R.T. -0.006 min
 Lab File: VW020899.D
 Acq: 15 Nov 2021 18:20

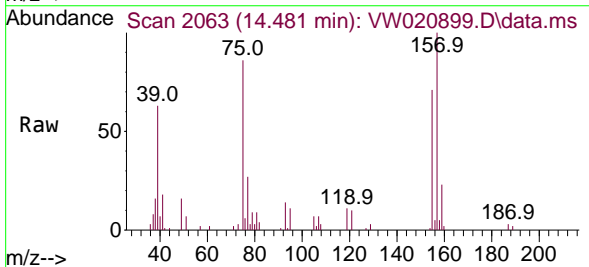
Instrument : MSVOA_W
 ClientSampled :



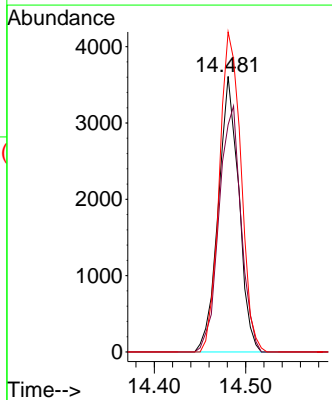
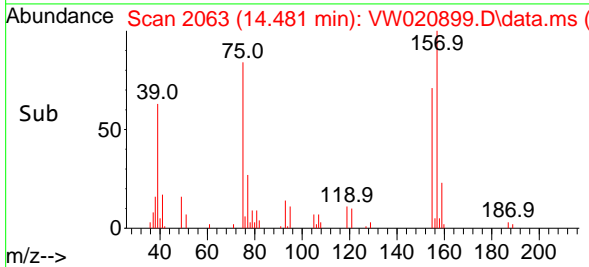
Tgt Ion:146 Resp: 81005
 Ion Ratio Lower Upper
 146 100
 111 39.7 33.1 49.7
 148 64.7 47.4 71.2

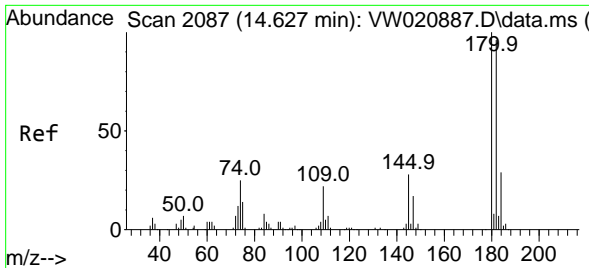


#68
 1,2-Dibromo-3-chloropropane
 Concen: 25.509 ug/L
 RT: 14.481 min Scan# 2063
 Delta R.T. -0.006 min
 Lab File: VW020899.D
 Acq: 15 Nov 2021 18:20



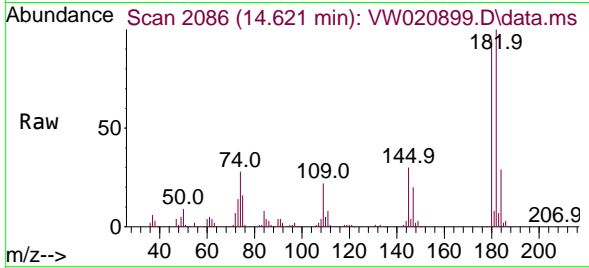
Tgt Ion: 75 Resp: 5616
 Ion Ratio Lower Upper
 75 100
 155 82.5 54.2 81.2#
 157 116.1 69.4 104.2#



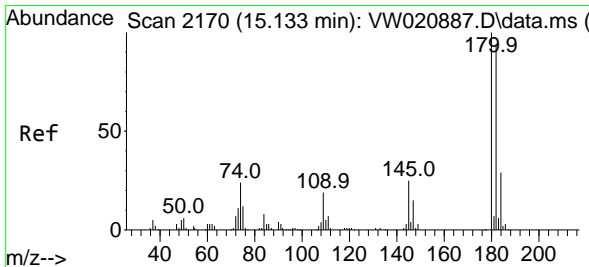
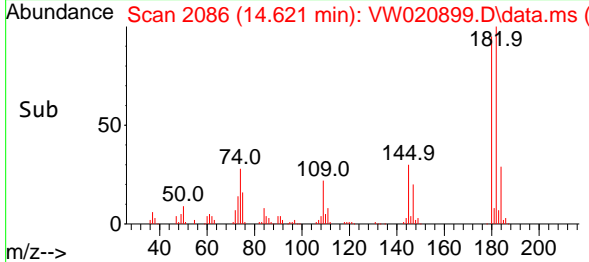
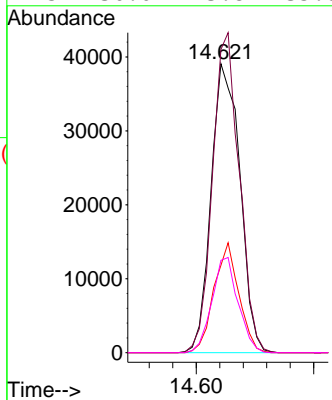


#69
 1,3,5-Trichlorobenzene
 Concen: 20.961 ug/L
 RT: 14.621 min Scan# 2087
 Delta R.T. -0.006 min
 Lab File: VW020899.D
 Acq: 15 Nov 2021 18:20

Instrument : MSVOA_W
 ClientSampled :

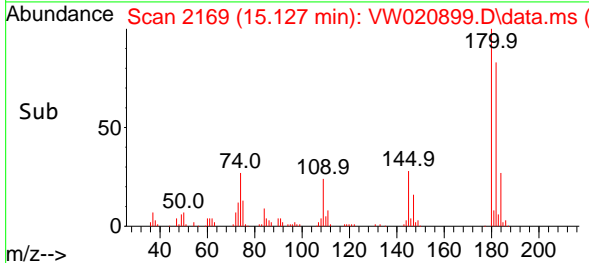
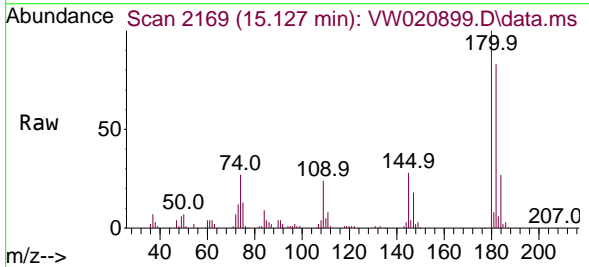
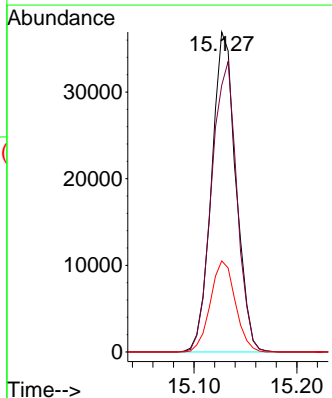


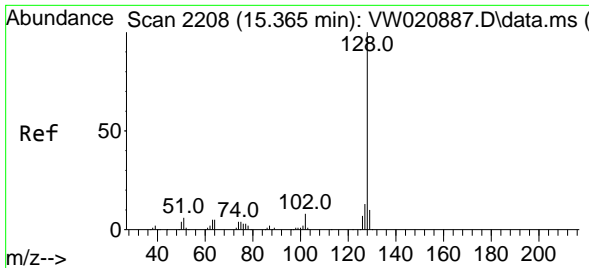
Tgt Ion:180 Resp: 66557
 Ion Ratio Lower Upper
 180 100
 182 102.7 75.4 113.0
 184 32.8 23.8 35.8
 145 30.0 23.8 35.8



#70
 1,2,4-trichlorobenzene
 Concen: 23.337 ug/L
 RT: 15.127 min Scan# 2169
 Delta R.T. -0.006 min
 Lab File: VW020899.D
 Acq: 15 Nov 2021 18:20

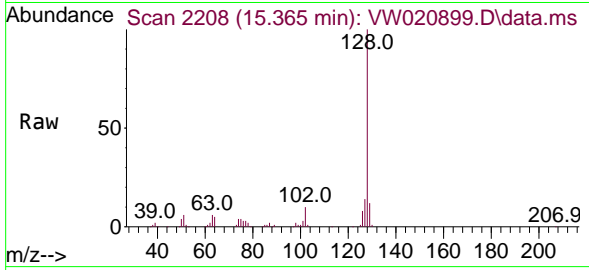
Tgt Ion:180 Resp: 60623
 Ion Ratio Lower Upper
 180 100
 182 94.3 79.0 118.6
 145 29.2 26.0 39.0



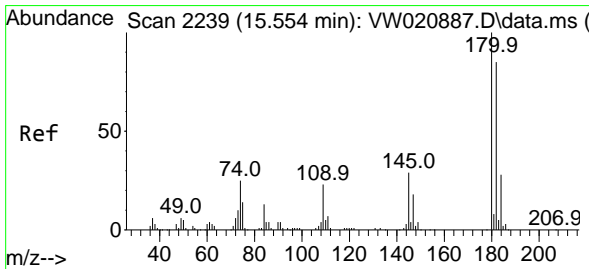
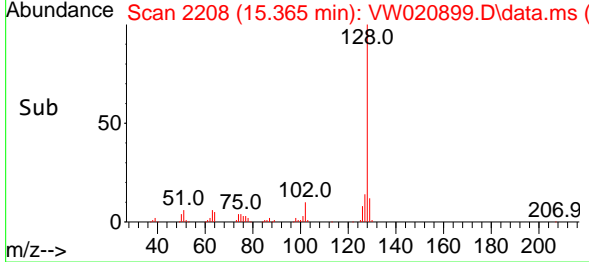
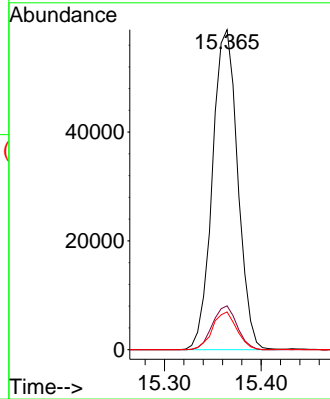


#71
 Naphthalene
 Concen: 25.307 ug/L
 RT: 15.365 min Scan# 21
 Delta R.T. 0.000 min
 Lab File: VW020899.D
 Acq: 15 Nov 2021 18:20

Instrument :
 MSVOA_W
 ClientSampleId :



Tgt Ion:128 Resp: 107119
 Ion Ratio Lower Upper
 128 100
 127 13.3 10.7 16.1
 129 11.3 8.6 12.8



#72
 1,2,3-Trichlorobenzene
 Concen: 24.049 ug/L
 RT: 15.548 min Scan# 2238
 Delta R.T. -0.006 min
 Lab File: VW020899.D
 Acq: 15 Nov 2021 18:20

Tgt Ion:180 Resp: 52718
 Ion Ratio Lower Upper
 180 100
 182 90.8 76.6 114.8
 145 30.4 27.4 41.0

