

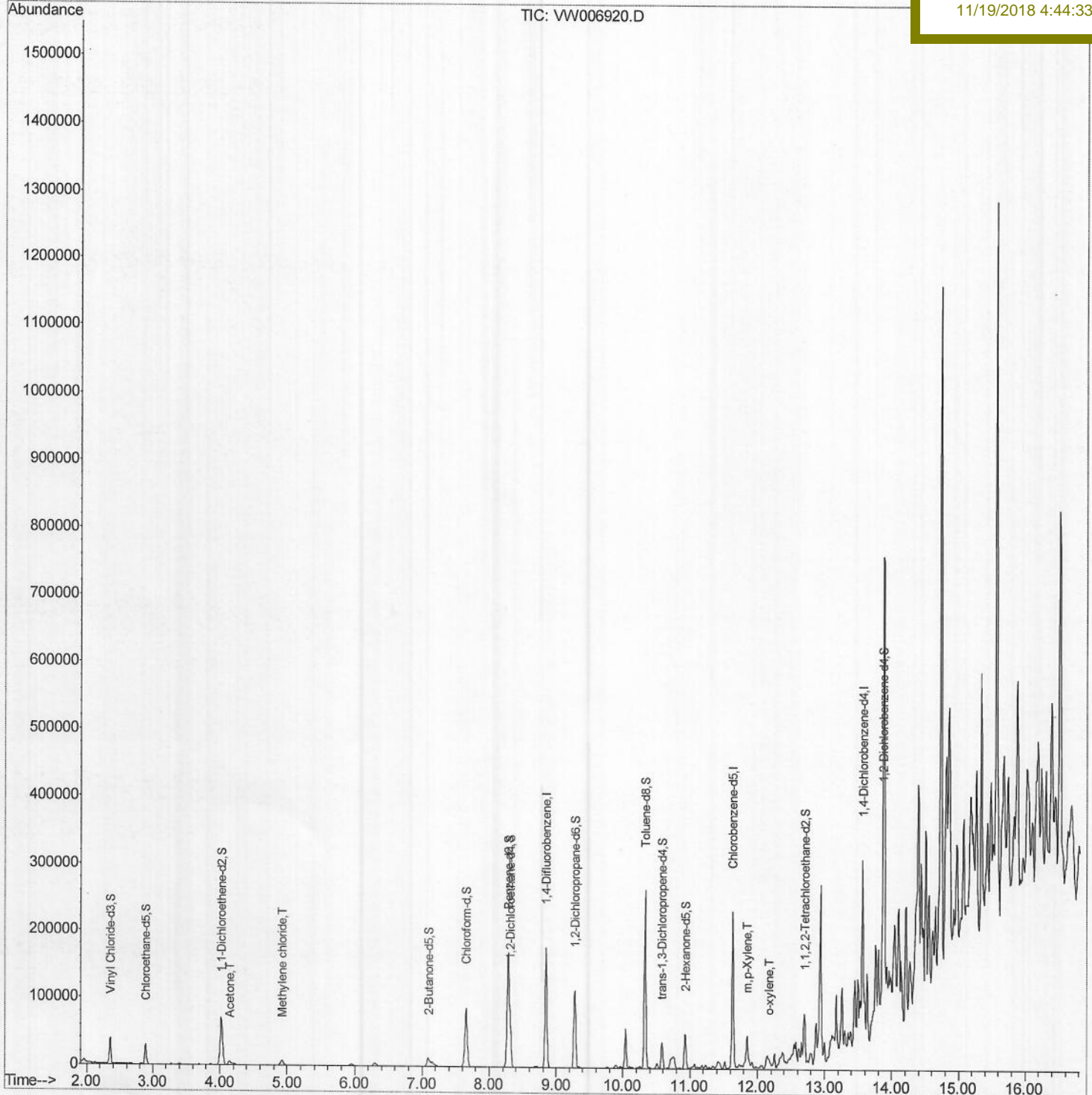
Data File : VW006920.D
Acq On : 16 Nov 2018 16:57
Operator : SY/AP
Sample : J5979-01
Misc : 5.10G/10ML/MSVOA_W/SOIL
ALS Vial : 1 Sample Multiplier: 1

Quant Time: Nov 17 01:05:50 2018
Quant Method : Z:\VOASRV\HPCHEM1\MSVOA_W\METHOD\SOM2WLM111418S.M
Quant Title : VOC Analysis
QLast Update : Fri Nov 16 23:51:03 2018
Response via : Initial Calibration

Instrument :
MSVOA_W
Client Sampled :
ET100

Manual Integrations
APPROVED

MMDadoda
11/19/2018 4:44:33 PM



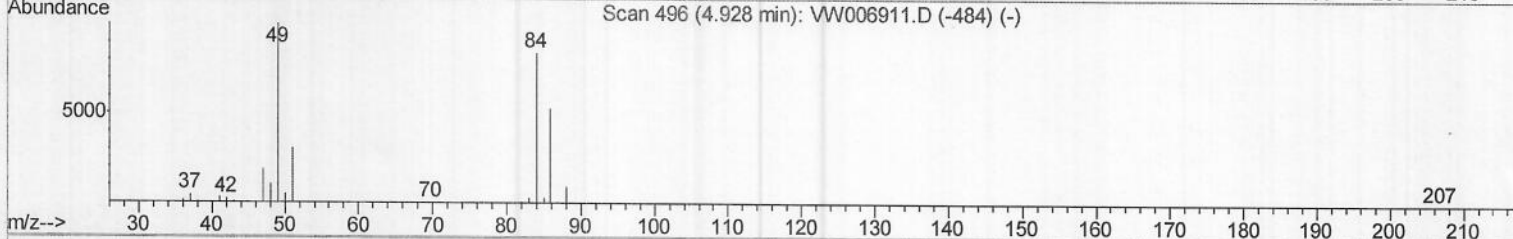
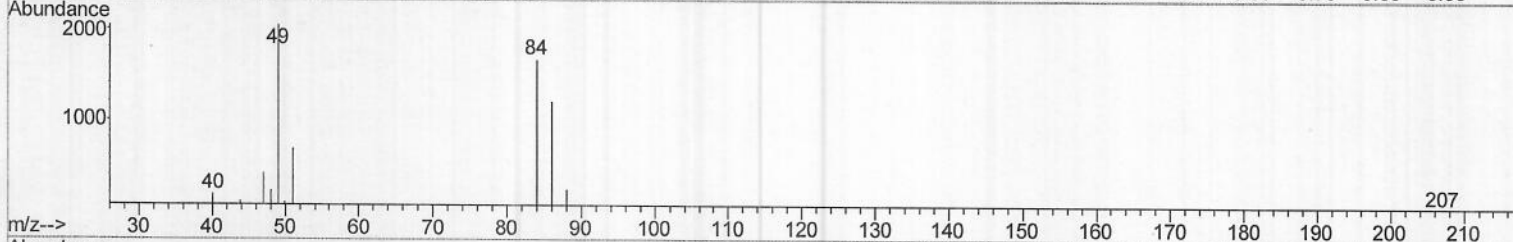
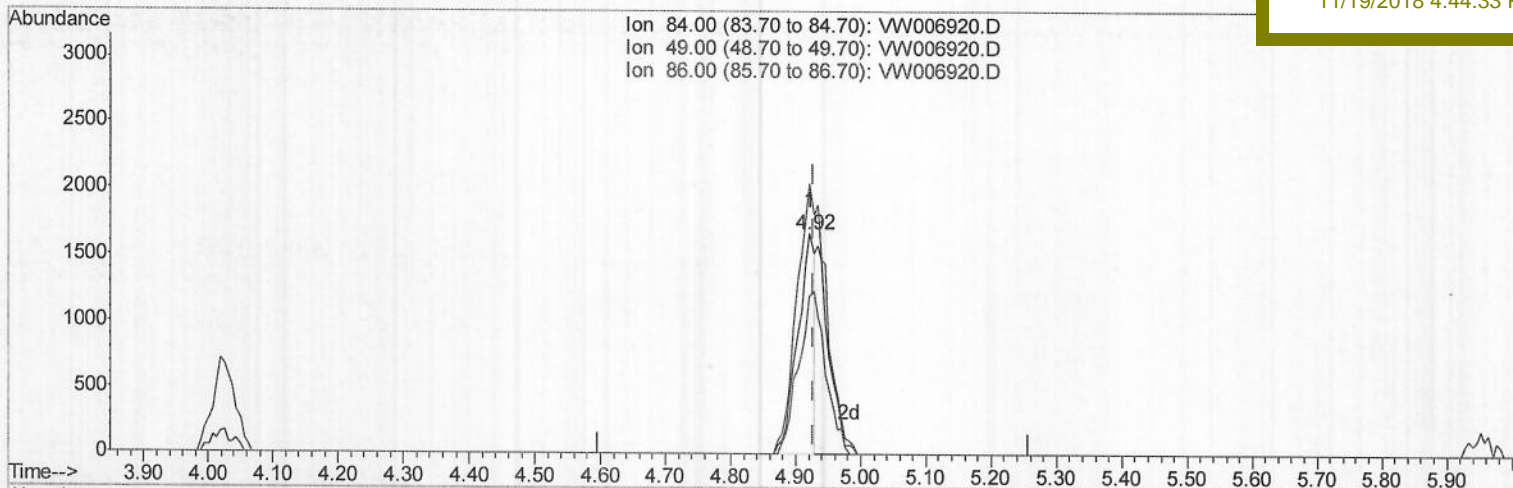
Data File : VW006920.D
 Acq On : 16 Nov 2018 16:57
 Operator : SY/AP
 Sample : J5979-01
 Misc : 5.10G/10ML/MSVOA_W/SOIL
 ALS Vial : 1 Sample Multiplier: 1

Instrument :
 MSVOA_W
 ClientSampleId :
 ET100

Quant Time: Nov 16 23:54:46 2018
 Quant Method : Z:\VOASRV\HPCHEM1\MSVOA_W\METHOD\SOM2WLM111418S.M
 Quant Title : VOC Analysis
 QLast Update : Fri Nov 16 23:51:03 2018
 Response via : Initial Calibration

Manual Integrations
 APPROVED

MMDadoda
 11/19/2018 4:44:33 PM



TIC: VW006920.D

(16) Methylene chloride (T)
 4.921min (-0.006) 1.15ug/L
 response 2971

Ion	Exp%	Act%
84.00	100	100
49.00	113.30	122.38
86.00	62.20	71.69
0.00	0.00	0.00

Data Path : Z:\voasrv\HPCHEM1\MSVOA_W\Data\VW111618\
Quantitation Report (Qedit)

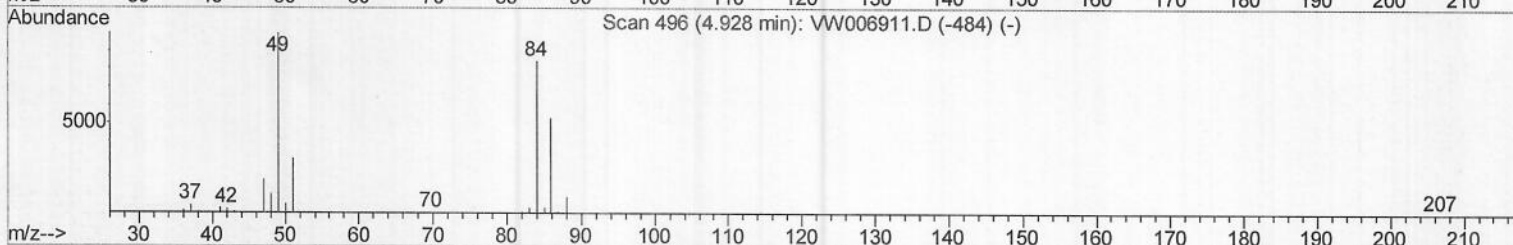
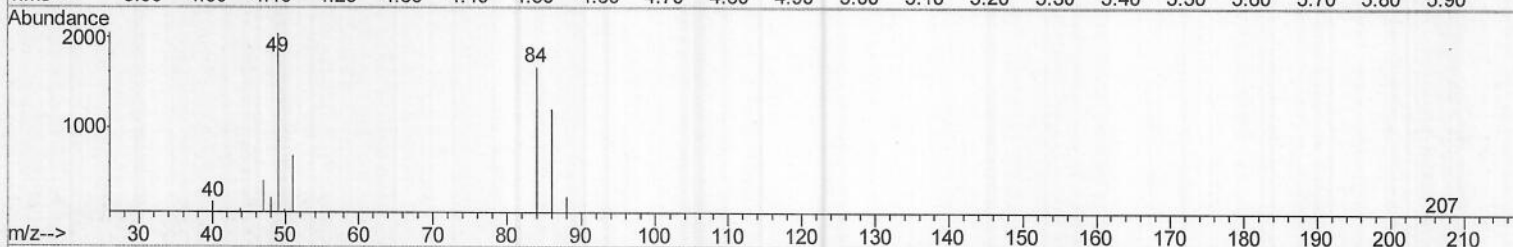
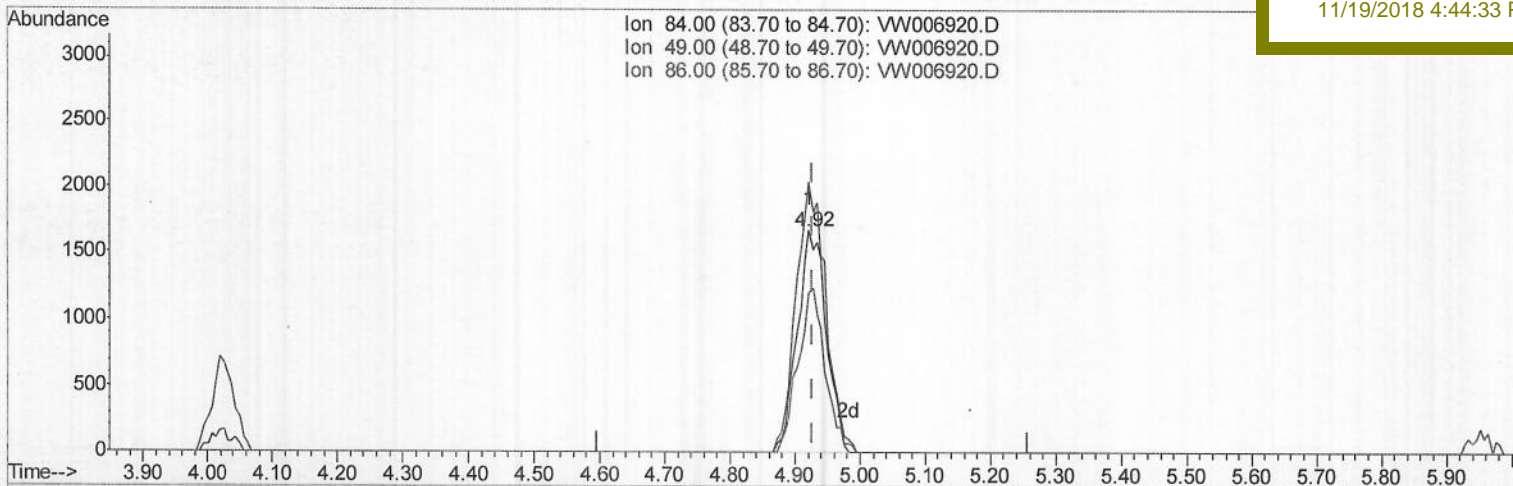
Data File : VW006920.D
Acq On : 16 Nov 2018 16:57
Operator : SY/AP
Sample : J5979-01
Misc : 5.10G/10ML/MSVOA_W/SOIL
ALS Vial : 1 Sample Multiplier: 1

Quant Time: Nov 16 23:54:46 2018
Quant Method : Z:\VOASRV\HPCHEM1\MSVOA_W\METHOD\SOM2WLM111418S.M
Quant Title : VOC Analysis
QLast Update : Fri Nov 16 23:51:03 2018
Response via : Initial Calibration

Instrument :
MSVOA_W
ClientSampled :
ET100

Manual Integrations
APPROVED

MMDadoda
11/19/2018 4:44:33 PM



TIC: VW006920.D

(16) Methylene chloride (T)

4.921min (-0.006) 2.02ug/L m > S.Y 11/22/18

response 5216

Ion	Exp%	Act%
84.00	100	100
49.00	113.30	122.38
86.00	62.20	71.69
0.00	0.00	0.00

Data File : VW006920.D
 Acq On : 16 Nov 2018 16:57
 Operator : SY/AP
 Sample : J5979-01
 Misc : 5.10G/10ML/MSVOA_W/SOIL
 ALS Vial : 1 Sample Multiplier: 1

Instrument :
 MSVOA_W
 Client Sampled :
 ET100

Quant Time: Nov 17 01:05:50 2018
 Quant Method : Z:\VOASRV\HPCHEM1\MSVOA_W\METHOD\SOM2WLM111418S.M
 Quant Title : VOC Analysis
 QLast Update : Fri Nov 16 23:51:03 2018
 Response via : Initial Calibration

Manual Integrations
 APPROVED
 MMDadoda
 11/19/2018 4:44:33 PM

Internal Standards	R.T.	QIon	Response	Conc	Units	Dev (Min)
1) 1,4-Difluorobenzene	8.85	114	147840	25.00	ug/L	0.00
28) Chlorobenzene-d5	11.63	117	127505	25.00	ug/L	0.00
60) 1,4-Dichlorobenzene-d4	13.57	152	47053	25.00	ug/L	0.00

System Monitoring Compounds

4) Vinyl Chloride-d3	2.35	65	35348	26.93	ug/L	0.00
Spiked Amount	25.000	Range 30 - 150	Recovery	=	107.72%	
7) Chloroethane-d5	2.89	69	27281	28.60	ug/L	0.00
Spiked Amount	25.000	Range 30 - 150	Recovery	=	114.40%	
10) 1,1-Dichloroethene-d2	4.03	63	68465	19.53	ug/L	0.00
Spiked Amount	25.000	Range 45 - 110	Recovery	=	78.12%	
20) 2-Butanone-d5	7.09	46	21110	29.18	ug/L	0.00
Spiked Amount	50.000	Range 20 - 135	Recovery	=	58.36%	
24) Chloroform-d	7.65	84	87328	26.68	ug/L	0.00
Spiked Amount	25.000	Range 40 - 150	Recovery	=	106.72%	
26) 1,2-Dichloroethane-d4	8.31	65	49517	26.81	ug/L	0.00
Spiked Amount	25.000	Range 70 - 130	Recovery	=	107.24%	
29) Benzene-d6	8.28	84	178214	26.74	ug/L	0.00
Spiked Amount	25.000	Range 20 - 135	Recovery	=	106.96%	
33) 1,2-Dichloropropane-d6	9.28	67	54825	26.87	ug/L	0.00
Spiked Amount	25.000	Range 70 - 120	Recovery	=	107.48%	
37) Toluene-d8	10.33	98	174886	25.62	ug/L	0.00
Spiked Amount	25.000	Range 30 - 130	Recovery	=	102.48%	
38) trans-1,3-Dichloropropene-	10.58	79	20131	22.97	ug/L	0.00
Spiked Amount	25.000	Range 30 - 135	Recovery	=	91.88%	
39) 2-Hexanone-d5	10.93	63	16631	32.72	ug/L	0.00
Spiked Amount	50.000	Range 20 - 135	Recovery	=	65.44%	
48) 1,1,2,2-Tetrachloroethane-	12.69	84	34339	19.45	ug/L	0.00
Spiked Amount	25.000	Range 45 - 120	Recovery	=	77.80%	
61) 1,2-Dichlorobenzene-d4	13.86	152	43112	24.19	ug/L	0.00
Spiked Amount	25.000	Range 75 - 120	Recovery	=	96.76%	

Target Compounds

	R.T.	QIon	Response	Conc	Units	Qvalue
13) Acetone	4.15	43	8000	17.167	ug/L	91
16) Methylene chloride	4.92	84	5216m	2.018	ug/L	96
54) m,p-Xylene	11.84	106	2755	0.741	ug/L	87
55) o-xylene	12.17	106	2146	0.630	ug/L	87

S.Y 11/22/18

(#) = qualifier out of range (m) = manual integration (+) = signals summed