

Data Path : Z:\voasrv\HPCHEM1\MSVOA\_W\Data\VW111824\  
 Data File : VW031041.D  
 Acq On : 18 Nov 2024 13:08  
 Operator : SY/MD  
 Sample : P4872-12  
 Mi sc : 5.85g/10mL/MSVOA\_W/SOIL/B  
 ALS Vial : 5 Sample Multiplier: 1

Instrument :  
 MSVOA\_W  
 ClientSampleId :

Quant Time: Nov 19 00:29:42 2024  
 Quant Method : Z:\voasrv\HPCHEM1\MSVOA\_W\Method\SFAMWLM110424SMA.M  
 Quant Title : SFAM01.0  
 QLast Update : Tue Nov 19 00:28:30 2024  
 Response via : Initial Calibration

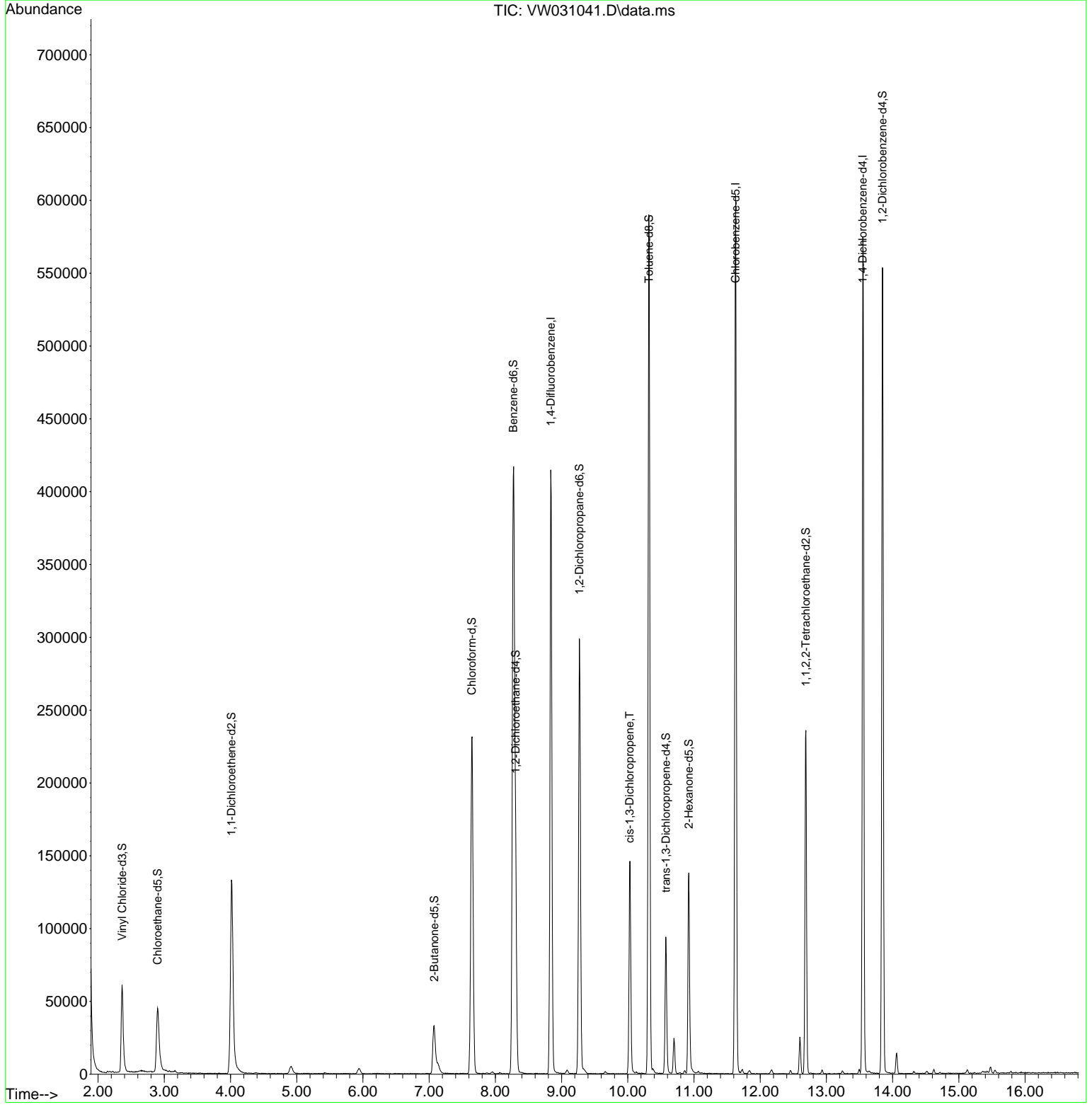
Compound	R. T.	QI on	Response	Conc	Units	Dev(Min)
Internal Standards						
1) 1,4-Difluorobenzene	8.837	114	357421	25.000	ug/L	0.00
28) Chlorobenzene-d5	11.629	117	347381	25.000	ug/L	0.00
58) 1,4-Dichlorobenzene-d4	13.550	152	159641	25.000	ug/L	0.00
System Monitoring Compounds						
4) Vinyl Chloride-d3	2.363	65	80704	13.767	ug/L	0.00
Spike Amount	25.000	Range	30 - 150	Recovery	=	55.080%
7) Chloroethane-d5	2.899	69	71239	15.845	ug/L	0.00
Spike Amount	25.000	Range	30 - 150	Recovery	=	63.400%
11) 1,1-Dichloroethane-d2	4.015	65	43198	17.859	ug/L	0.00
Spike Amount	25.000	Range	45 - 110	Recovery	=	71.440%
21) 2-Butanone-d5	7.075	46	57367	59.467	ug/L	0.00
Spike Amount	50.000	Range	20 - 135	Recovery	=	118.940%
24) Chloroform-d	7.642	84	238675	22.651	ug/L	0.00
Spike Amount	25.000	Range	40 - 150	Recovery	=	90.600%
26) 1,2-Dichloroethane-d4	8.307	65	123375	23.550	ug/L	0.00
Spike Amount	25.000	Range	70 - 130	Recovery	=	94.200%
32) Benzene-d6	8.270	84	448410	20.778	ug/L	0.00
Spike Amount	25.000	Range	20 - 135	Recovery	=	83.120%
36) 1,2-Dichloropropane-d6	9.270	67	145498	22.870	ug/L	0.00
Spike Amount	25.000	Range	70 - 120	Recovery	=	91.480%
41) Toluene-d8	10.319	98	402353	20.785	ug/L	0.00
Spike Amount	25.000	Range	30 - 130	Recovery	=	83.160%
43) trans-1,3-Dichloropropene	10.575	79	53376	20.698	ug/L	0.00
Spike Amount	25.000	Range	30 - 135	Recovery	=	82.800%
47) 2-Hexanone-d5	10.922	63	48820	59.211	ug/L	0.00
Spike Amount	50.000	Range	20 - 135	Recovery	=	118.420%
56) 1,1,2,2-Tetrachloroethane	12.690	84	119401	26.938	ug/L	0.00
Spike Amount	25.000	Range	45 - 120	Recovery	=	107.760%
66) 1,2-Dichlorobenzene-d4	13.848	152	150235	25.835	ug/L	0.00
Spike Amount	25.000	Range	75 - 120	Recovery	=	103.360%
Target Compounds						
39) cis-1,3-Dichloropropene	10.026	75	4271	0.510	ug/L #	74

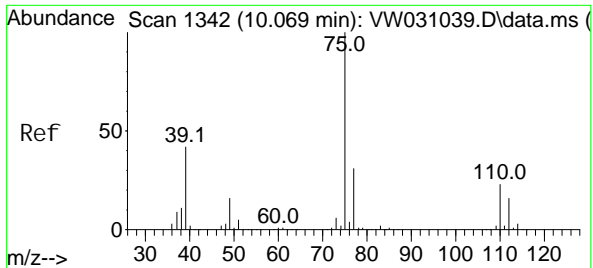
(#) = qualifier out of range (m) = manual integration (+) = signals summed

Data Path : Z:\voasrv\HPCHEM1\MSVOA\_W\Data\VW111824\  
 Data File : VW031041.D  
 Acq On : 18 Nov 2024 13:08  
 Operator : SY/MD  
 Sample : P4872-12  
 Misc : 5.85g/10mL/MSVOA\_W/SOIL/B  
 ALS Vial : 5 Sample Multiplier: 1

**Instrument :**  
 MSVOA\_W  
**ClientSampleId :**

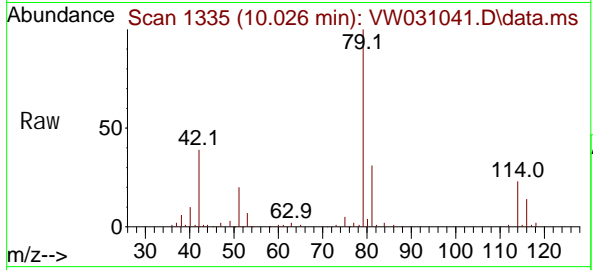
Quant Time: Nov 19 00:29:42 2024  
 Quant Method : Z:\voasrv\HPCHEM1\MSVOA\_W\Method\SFAMWLM110424SMA.M  
 Quant Title : SFAM01.0  
 QLast Update : Tue Nov 19 00:28:30 2024  
 Response via : Initial Calibration





#39  
 ci s-1, 3-Di chl oropropene  
 Concen: 0.510 ug/L  
 RT: 10.026 min Scan# 11  
 Delta R.T. -0.043 min  
 Lab File: VW031041.D  
 Acq: 18 Nov 2024 13:08

Instrument :  
 MSVOA\_W  
 ClientSampleId :



Tgt Ion: 75 Resp: 4271  
 Ion Ratio Lower Upper  
 75 100  
 77 44.8 21.3 39.6#

