

Data Path : Z:\VOASRV\HPCHEM1\MSVOA W\DATA\VW112018\  
 Data File : VW006969.D  
 Acq On : 20 Nov 2018 02:56  
 Operator : SY/AP  
 Sample : J5993-04  
 Misc : 5.08G/5ML/MSVOA W/SOIL  
 ALS Vial : 37 Sample Multiplier: 1

Instrument :  
 MSVOA\_W  
 ClientSampleId :  
 20180928-AMENDED-WCC-1-COMP

Quant Time: Nov 20 06:45:25 2018  
 Quant Method : Z:\VOASRV\HPCHEM1\MSVOA\_W\METHOD\82W111718S.M  
 Quant Title : SW846 8260  
 QLast Update : Sat Nov 17 04:45:18 2018  
 Response via : Initial Calibration

Internal Standards	R.T.	QIon	Response	Conc	Units	Dev(Min)
1) Pentafluorobenzene	7.95	168	92282	50.00	ug/l	0.00
34) 1,4-Difluorobenzene	8.84	114	148187	50.00	ug/l	0.00
63) Chlorobenzene-d5	11.63	117	131391	50.00	ug/l	0.00
72) 1,4-Dichlorobenzene-d4	13.56	152	50865	50.00	ug/l	0.00

## System Monitoring Compounds

33) 1,2-Dichloroethane-d4	8.30	65	53718	52.23	ug/l	0.00
Spiked Amount				50.000		
			Recovery	=	104.46%	
35) Dibromofluoromethane	7.95	113	131	0.15	ug/l	0.06
Spiked Amount				50.000		
			Recovery	=	0.30%	
50) Toluene-d8	10.32	98	182146	48.85	ug/l	0.00
Spiked Amount				50.000		
			Recovery	=	97.70%	
62) 4-Bromofluorobenzene	12.62	95	66623	45.82	ug/l	0.00
Spiked Amount				50.000		
			Recovery	=	91.64%	

## Target Compounds

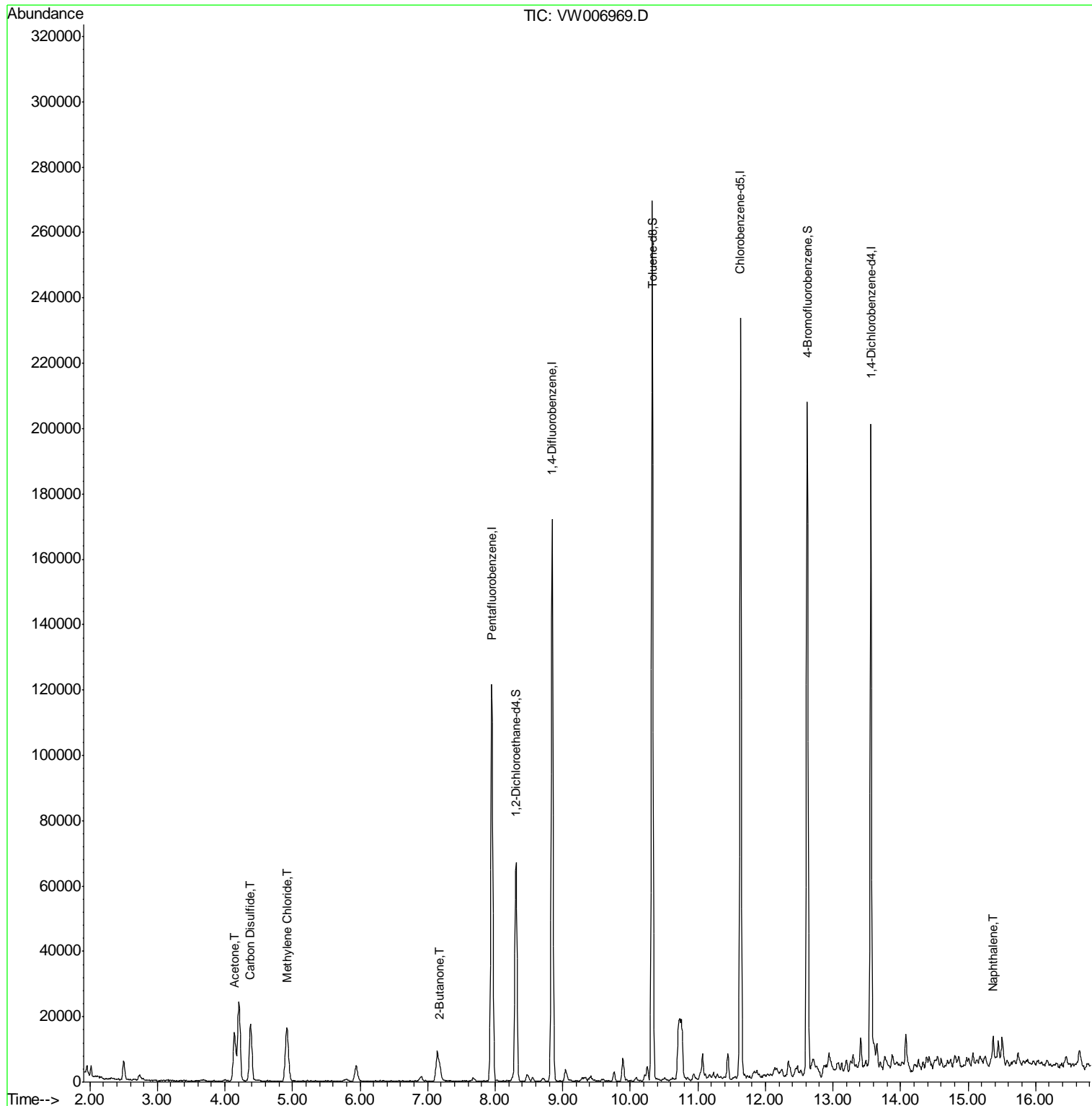
						Qvalue
16) Acetone	4.14	43	27999	177.989	ug/l	96
17) Carbon Disulfide	4.38	76	36248	13.476	ug/l	99
20) Methylene Chloride	4.92	84	13924	10.164	ug/l	92
25) 2-Butanone	7.18	43	6889	26.369	ug/l	92
95) Naphthalene	15.37	128	7998	4.226	ug/l	97

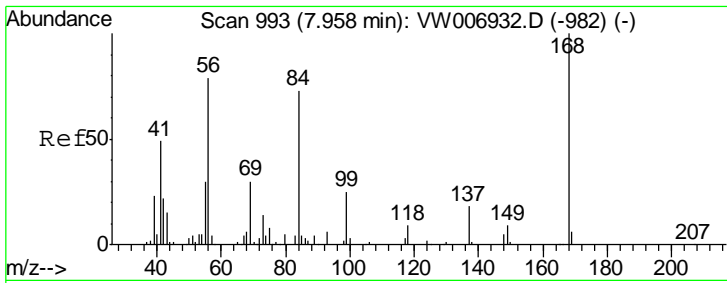
(#) = qualifier out of range (m) = manual integration (+) = signals summed

Data Path : Z:\VOASRV\HPCHEM1\MSVOA W\DATA\VW112018\  
 Data File : VW006969.D  
 Acq On : 20 Nov 2018 02:56  
 Operator : SY/AP  
 Sample : J5993-04  
 Misc : 5.08G/5ML/MSVOA W/SOIL  
 ALS Vial : 37 Sample Multiplier: 1

Instrument :  
 MSVOA\_W  
 ClientSampleId :  
 20180928-AMENDED-WCC-1-COMP

Quant Time: Nov 20 06:45:25 2018  
 Quant Method : Z:\VOASRV\HPCHEM1\MSVOA\_W\METHOD\82W111718S.M  
 Quant Title : SW846 8260  
 QLast Update : Sat Nov 17 04:45:18 2018  
 Response via : Initial Calibration

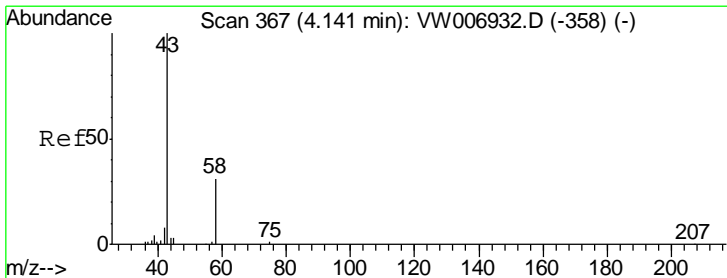
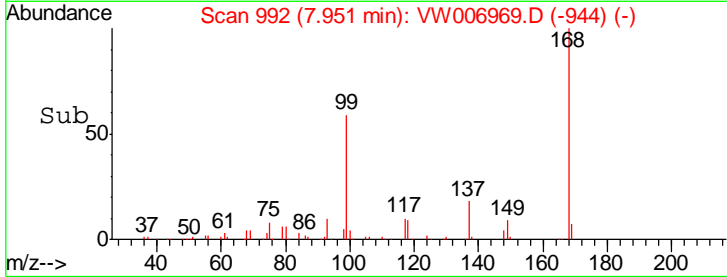
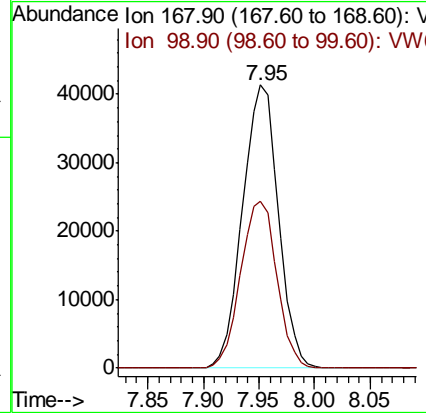
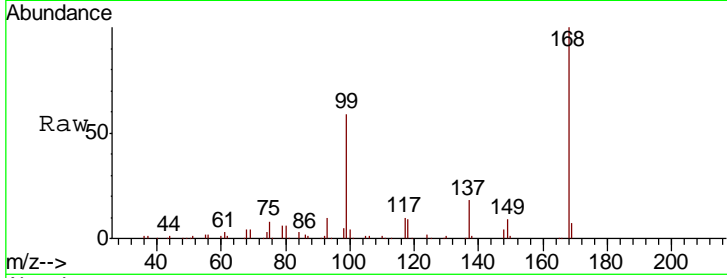




#1  
 Pentafluorobenzene  
 Concen: 50.000 ug/l  
 RT: 7.95 min Scan# 992  
 Delta R.T. -0.01 min  
 Lab File: VW006969.D  
 Acq: 20 Nov 2018 02:56

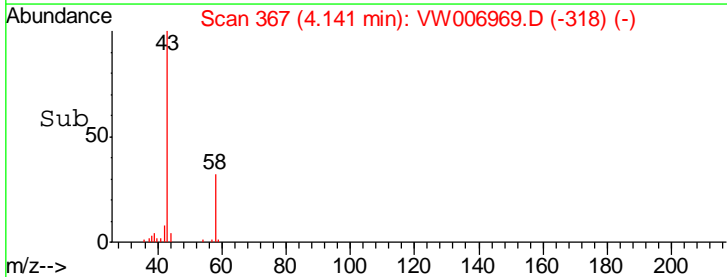
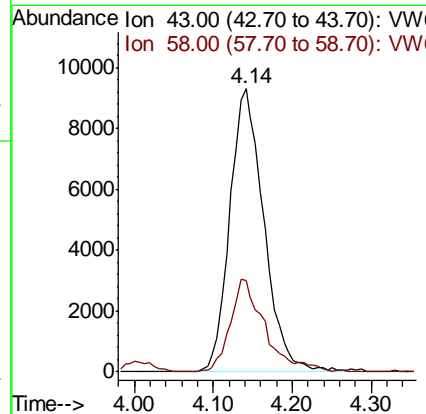
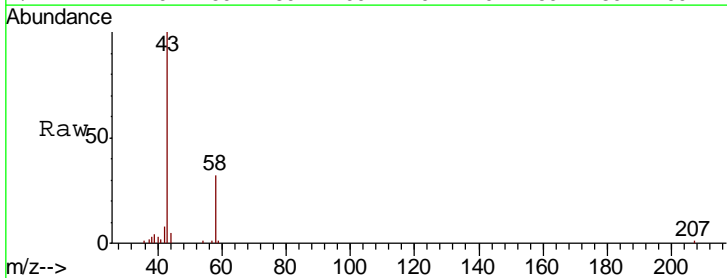
Instrument :  
 MSVOA\_W  
 ClientSampleId :  
 20180928-AMENDED-WCC-1-COMP

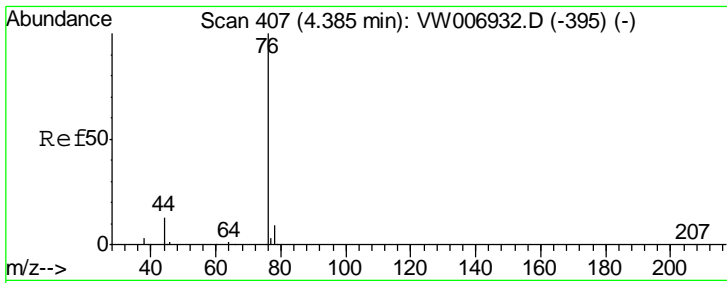
Tgt Ion: 168 Resp: 92282  
 Ion Ratio Lower Upper  
 168 100  
 99 59.0 49.3 73.9



#16  
 Acetone  
 Concen: 177.989 ug/l  
 RT: 4.14 min Scan# 367  
 Delta R.T. -0.00 min  
 Lab File: VW006969.D  
 Acq: 20 Nov 2018 02:56

Tgt Ion: 43 Resp: 27999  
 Ion Ratio Lower Upper  
 43 100  
 58 32.4 24.2 36.4

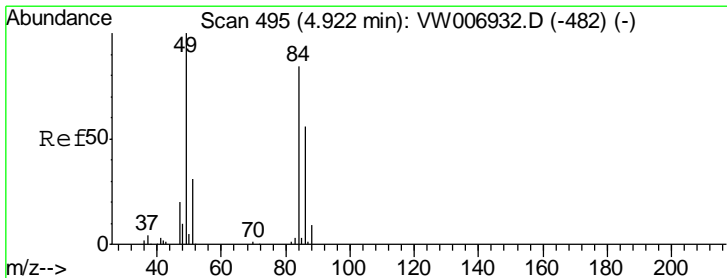
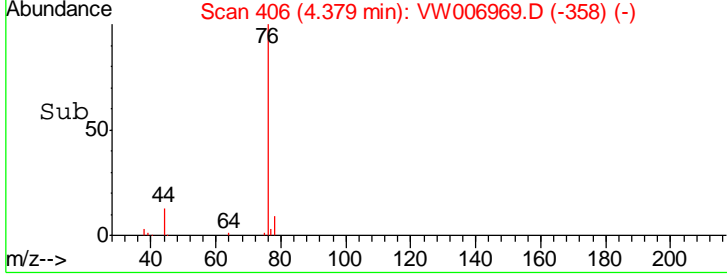
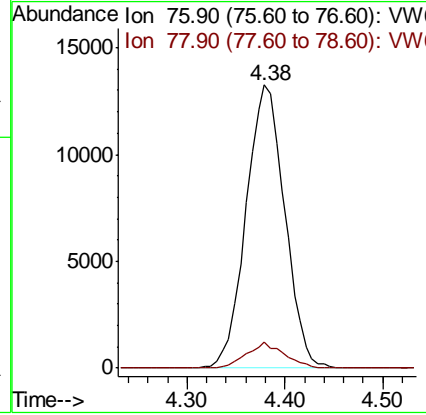
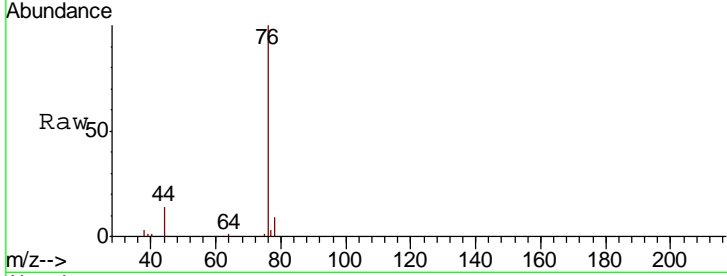




#17  
 Carbon Disulfide  
 Concen: 13.476 ug/l  
 RT: 4.38 min Scan# 406  
 Delta R.T. -0.01 min  
 Lab File: VW006969.D  
 Acq: 20 Nov 2018 02:56

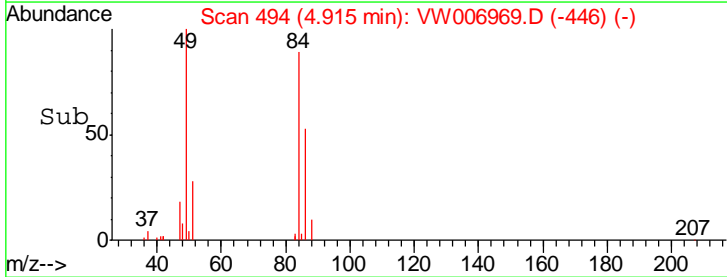
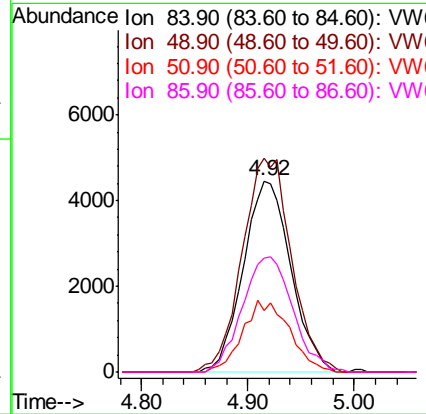
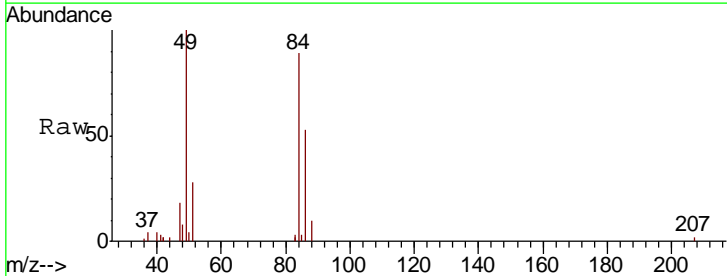
Instrument :  
 MSVOA\_W  
 ClientSampled :  
 20180928-AMENDED-WCC-1-COMP

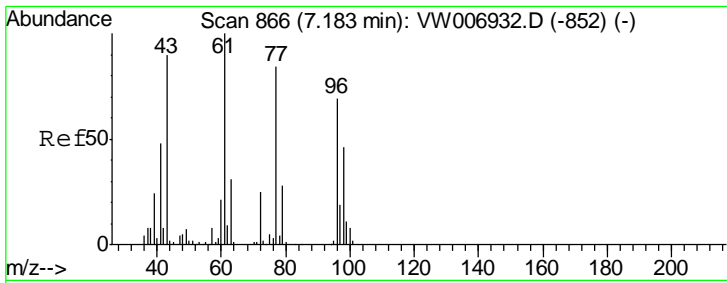
Tgt Ion	Resp	Lower	Upper
76	36248		
78	9.2	7.1	10.7



#20  
 Methylene Chloride  
 Concen: 10.164 ug/l  
 RT: 4.92 min Scan# 494  
 Delta R.T. -0.01 min  
 Lab File: VW006969.D  
 Acq: 20 Nov 2018 02:56

Tgt Ion	Resp	Lower	Upper
84	13924		
49	111.8	95.4	143.2
51	31.9	29.5	44.3
86	59.6	53.4	80.2

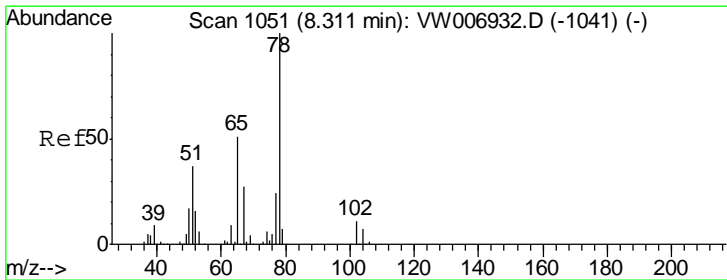
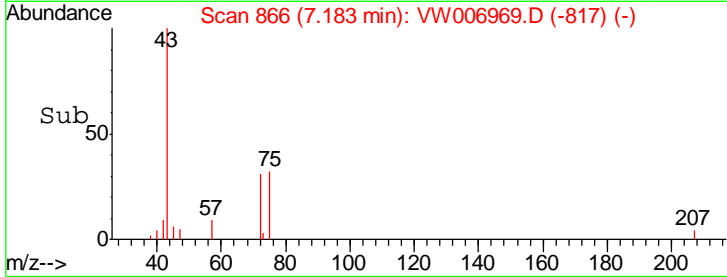
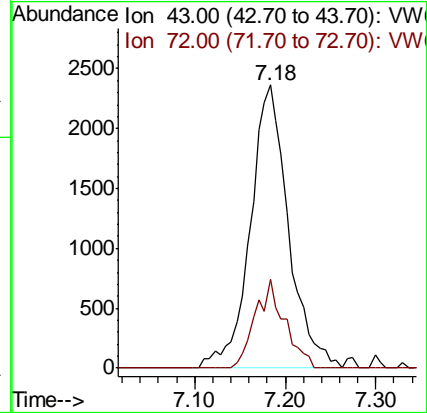
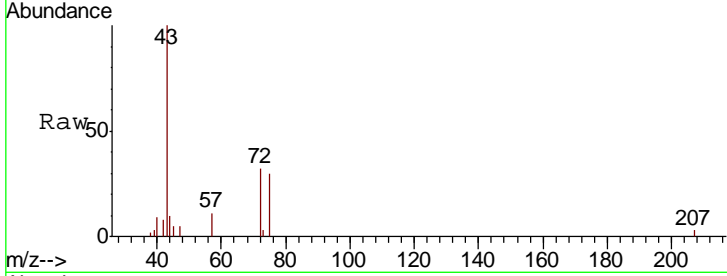




#25  
 2-Butanone  
 Concen: 26.369 ug/l  
 RT: 7.18 min Scan# 866  
 Delta R.T. -0.00 min  
 Lab File: VW006969.D  
 Acq: 20 Nov 2018 02:56

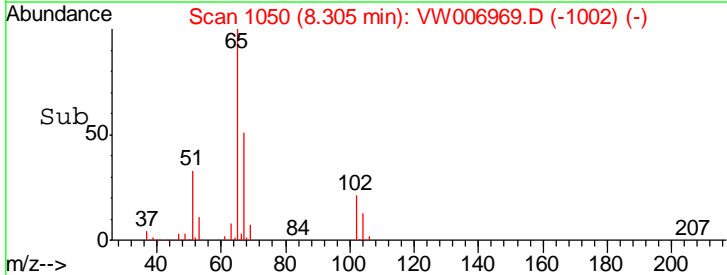
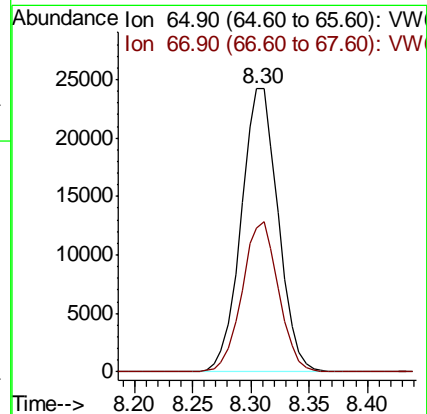
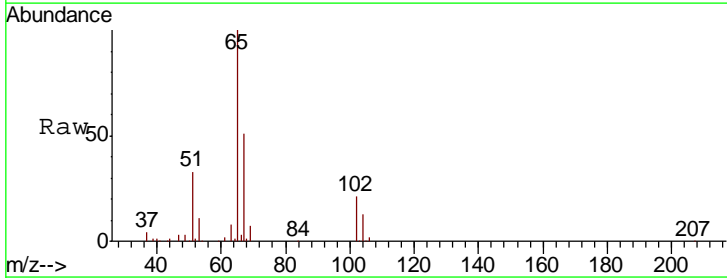
Instrument :  
 MSVOA\_W  
 ClientSampled :  
 20180928-AMENDED-WCC-1-COMP

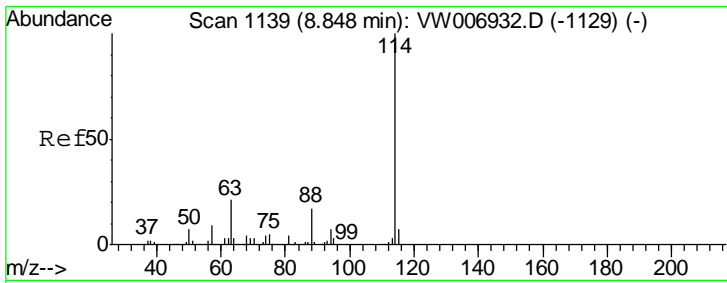
Tgt Ion: 43 Resp: 6889  
 Ion Ratio Lower Upper  
 43 100  
 72 31.5 22.1 33.1



#33  
 1,2-Dichloroethane-d4  
 Concen: 52.233 ug/l  
 RT: 8.30 min Scan# 1050  
 Delta R.T. -0.01 min  
 Lab File: VW006969.D  
 Acq: 20 Nov 2018 02:56

Tgt Ion: 65 Resp: 53718  
 Ion Ratio Lower Upper  
 65 100  
 67 52.1 0.0 104.0

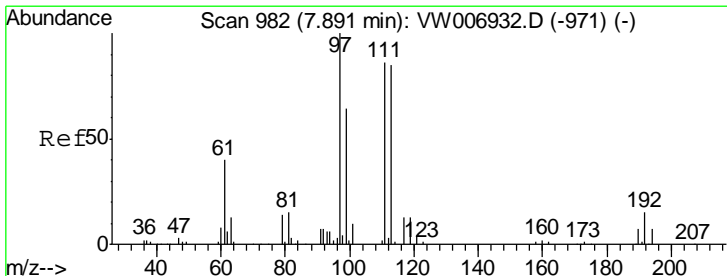
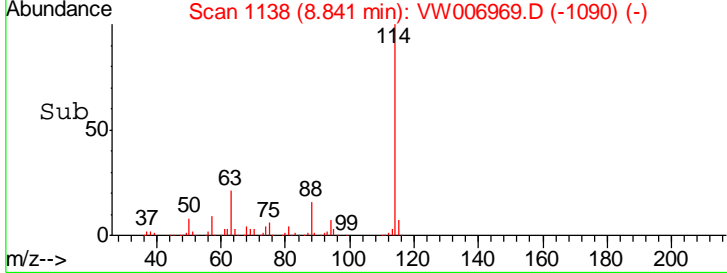
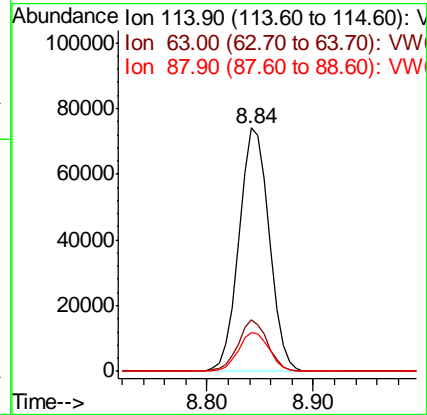
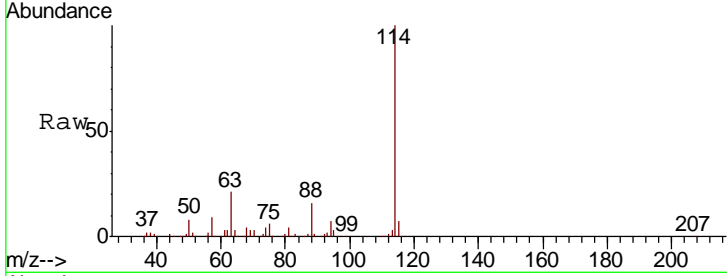




#34  
 1,4-Difluorobenzene  
 Concen: 50.000 ug/l  
 RT: 8.84 min Scan# 1138  
 Delta R.T. -0.01 min  
 Lab File: VW006969.D  
 Acq: 20 Nov 2018 02:56

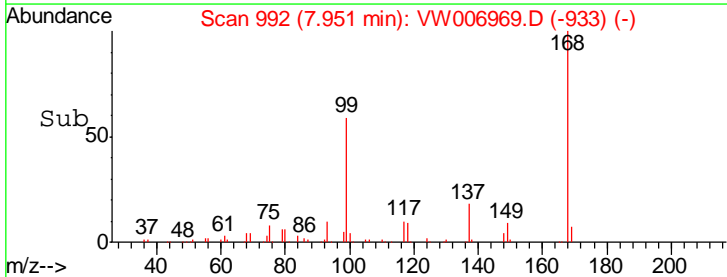
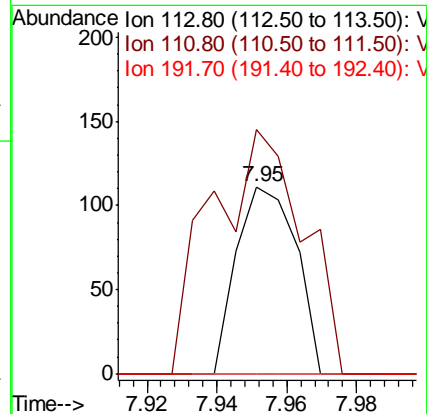
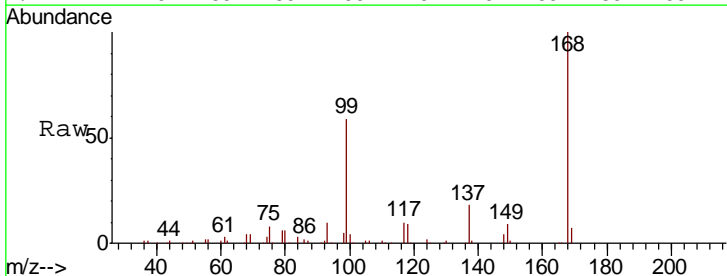
Instrument :  
 MSVOA\_W  
 ClientSampleId :  
 20180928-AMENDED-WCC-1-COMP

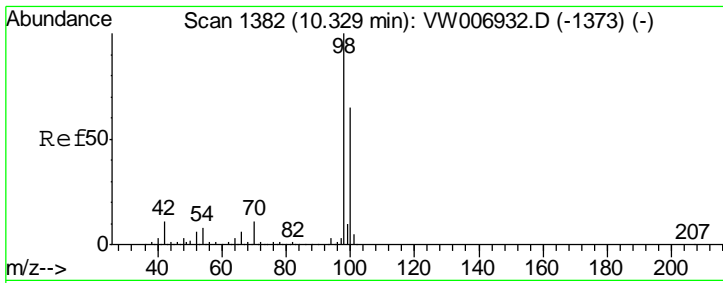
Tgt Ion	Resp	Lower	Upper
114	148187		
63	21.0	0.0	42.2
88	16.1	0.0	33.4



#35  
 Dibromofluoromethane  
 Concen: 0.151 ug/l  
 RT: 7.95 min Scan# 992  
 Delta R.T. 0.06 min  
 Lab File: VW006969.D  
 Acq: 20 Nov 2018 02:56

Tgt Ion	Resp	Lower	Upper
113	131		
111	201.5	81.7	122.5#
192	0.0	13.9	20.9#

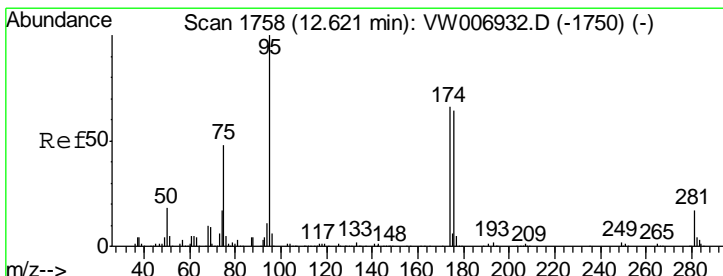
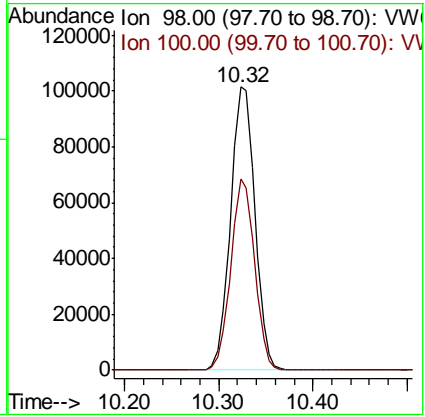
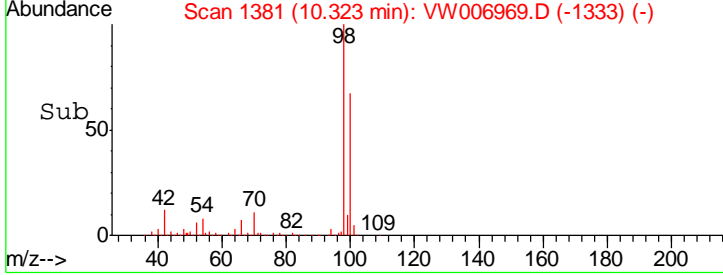
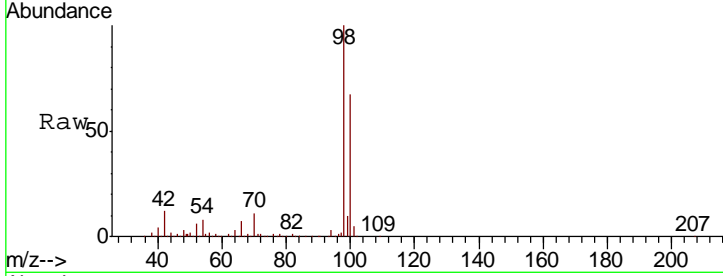




#50  
 Toluene-d8  
 Concen: 48.849 ug/l  
 RT: 10.32 min Scan# 1381  
 Delta R.T. -0.01 min  
 Lab File: VW006969.D  
 Acq: 20 Nov 2018 02:56

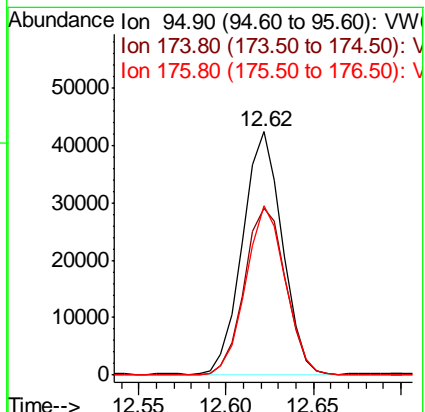
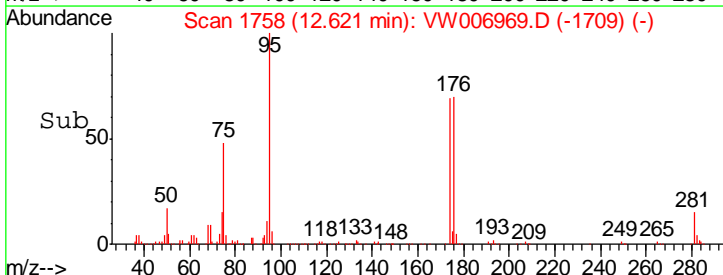
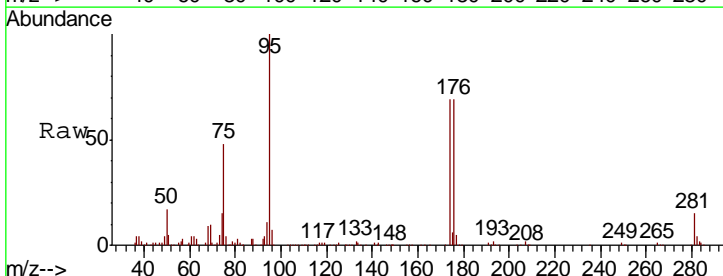
Instrument :  
 MSVOA\_W  
 ClientSampleId :  
 20180928-AMENDED-WCC-1-COMP

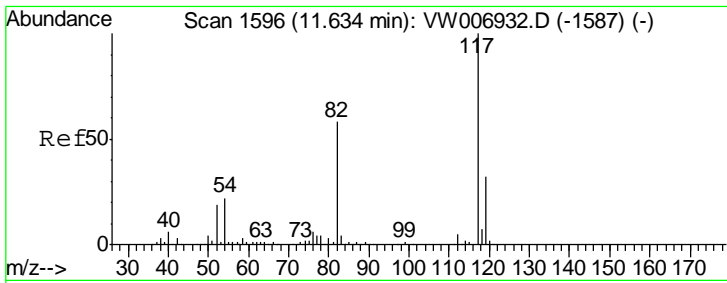
Tgt Ion	Resp	Lower	Upper
98	182146		
100	65.9	52.3	78.5



#62  
 4-Bromofluorobenzene  
 Concen: 45.822 ug/l  
 RT: 12.62 min Scan# 1758  
 Delta R.T. -0.00 min  
 Lab File: VW006969.D  
 Acq: 20 Nov 2018 02:56

Tgt Ion	Resp	Lower	Upper
95	66623		
174	71.8	0.0	138.4
176	69.6	0.0	133.4

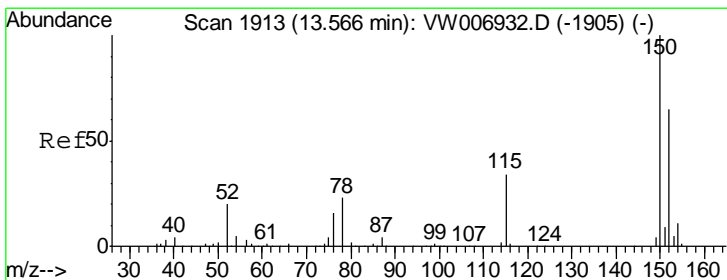
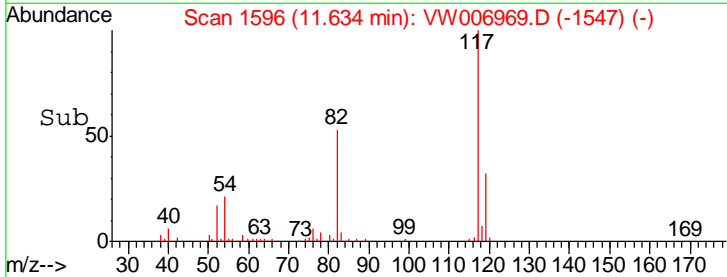
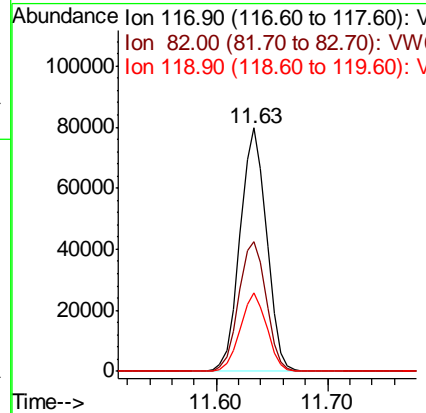
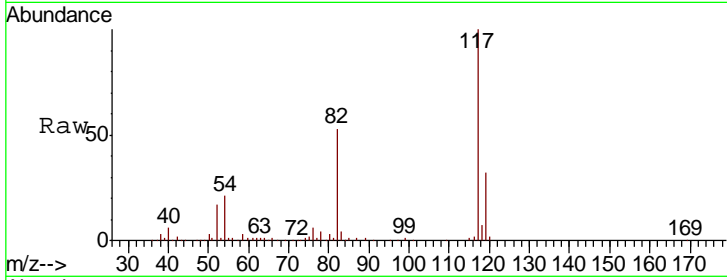




#63  
 Chlorobenzene-d5  
 Concen: 50.000 ug/l  
 RT: 11.63 min Scan# 1596  
 Delta R.T. -0.00 min  
 Lab File: VW006969.D  
 Acq: 20 Nov 2018 02:56

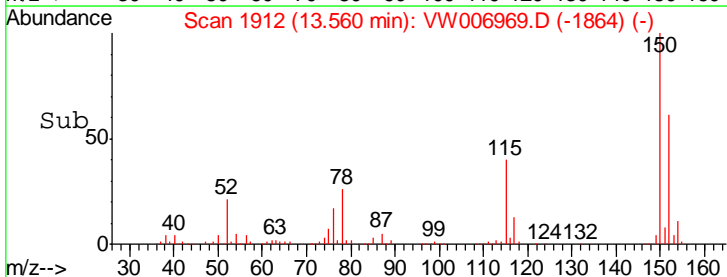
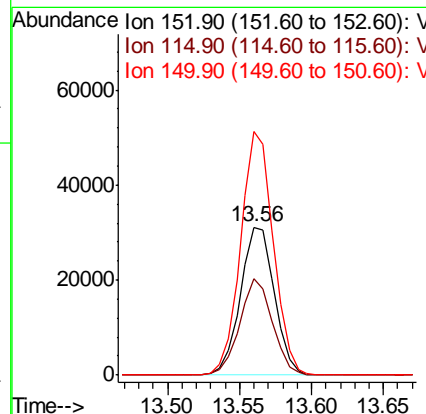
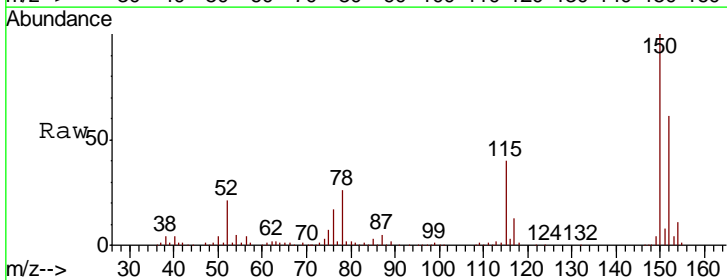
Instrument : MSVOA\_W  
 ClientSampled : 20180928-AMENDED-WCC-1-COMP

Tgt Ion	Resp	Lower	Upper
117	131391		
82	53.2	46.2	69.2
119	31.9	25.5	38.3

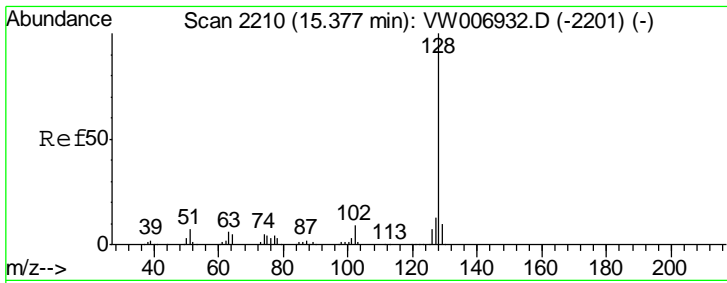


#72  
 1,4-Dichlorobenzene-d4  
 Concen: 50.000 ug/l  
 RT: 13.56 min Scan# 1912  
 Delta R.T. -0.01 min  
 Lab File: VW006969.D  
 Acq: 20 Nov 2018 02:56

Tgt Ion	Resp	Lower	Upper
152	50865		
115	62.4	31.6	94.7
150	158.6	0.0	350.0







#95  
 Naphthalene  
 Concen: 4.226 ug/l  
 RT: 15.37 min Scan# 2209  
 Delta R.T. -0.01 min  
 Lab File: VW006969.D  
 Acq: 20 Nov 2018 02:56

Instrument : MSVOA\_W  
 ClientSampleId : 20180928-AMENDED-WCC-1-COMP

Tot Ion:128 Resp: 7998

Ion	Ratio	Lower	Upper
128	100		
127	11.8	10.6	15.8
129	11.6	8.5	12.7

