

Data Path : Z:\VOASRV\HPCHEM1\MSVOA W\DATA\VW112020\
 Data File : VW017450.D
 Acq On : 21 Nov 2020 04:54
 Operator : SY/VA
 Sample : L4860-18
 Misc : 5.34G/10ML/MSVOA W/SOIL
 ALS Vial : 1 Sample Multiplier: 1

Instrument :
 MSVOA_W
 ClientSampleId :
 C0BE4

Quant Time: Nov 21 05:58:10 2020
 Quant Method : Z:\VOASRV\HPCHEM1\MSVOA_W\METHOD\SOM2WLM111820S.M
 Quant Title : VOC Analysis
 QLast Update : Sat Nov 21 02:27:17 2020
 Response via : Initial Calibration

Internal Standards	R.T.	QIon	Response	Conc	Units	Dev(Min)
1) 1,4-Difluorobenzene	8.84	114	376303	25.00	ug/L	0.00
28) Chlorobenzene-d5	11.63	117	351446	25.00	ug/L	0.00
60) 1,4-Dichlorobenzene-d4	13.56	152	160467	25.00	ug/L	0.00

System Monitoring Compounds

4) Vinyl Chloride-d3	2.36	65	109276	19.61	ug/L	0.00
Spiked Amount	25.000	Range	30 - 150	Recovery	=	78.44%
7) Chloroethane-d5	2.89	69	110018	24.86	ug/L	0.00
Spiked Amount	25.000	Range	30 - 150	Recovery	=	99.44%
10) 1,1-Dichloroethene-d2	4.02	63	152091	15.61	ug/L	0.00
Spiked Amount	25.000	Range	45 - 110	Recovery	=	62.44%
20) 2-Butanone-d5	7.08	46	36316	39.69	ug/L	0.00
Spiked Amount	50.000	Range	20 - 135	Recovery	=	79.38%
24) Chloroform-d	7.65	84	216874	21.94	ug/L	0.00
Spiked Amount	25.000	Range	40 - 150	Recovery	=	87.76%
26) 1,2-Dichloroethane-d4	8.31	65	105992	22.19	ug/L	0.00
Spiked Amount	25.000	Range	70 - 130	Recovery	=	88.76%
29) Benzene-d6	8.27	84	426024	21.50	ug/L	0.00
Spiked Amount	25.000	Range	20 - 135	Recovery	=	86.00%
33) 1,2-Dichloropropane-d6	9.27	67	160665	30.44	ug/L	0.00
Spiked Amount	25.000	Range	70 - 120	Recovery	=	121.76%#
37) Toluene-d8	10.32	98	517854	27.76	ug/L	0.00
Spiked Amount	25.000	Range	30 - 130	Recovery	=	111.04%
38) trans-1,3-Dichloropropene-	10.58	79	50625	22.03	ug/L	0.00
Spiked Amount	25.000	Range	30 - 135	Recovery	=	88.12%
39) 2-Hexanone-d5	10.93	63	33591	47.46	ug/L	0.00
Spiked Amount	50.000	Range	20 - 135	Recovery	=	94.92%
48) 1,1,2,2-Tetrachloroethane-	12.69	84	84885	21.22	ug/L	0.00
Spiked Amount	25.000	Range	45 - 120	Recovery	=	84.88%
61) 1,2-Dichlorobenzene-d4	13.85	152	139495	23.55	ug/L	0.00
Spiked Amount	25.000	Range	75 - 120	Recovery	=	94.20%

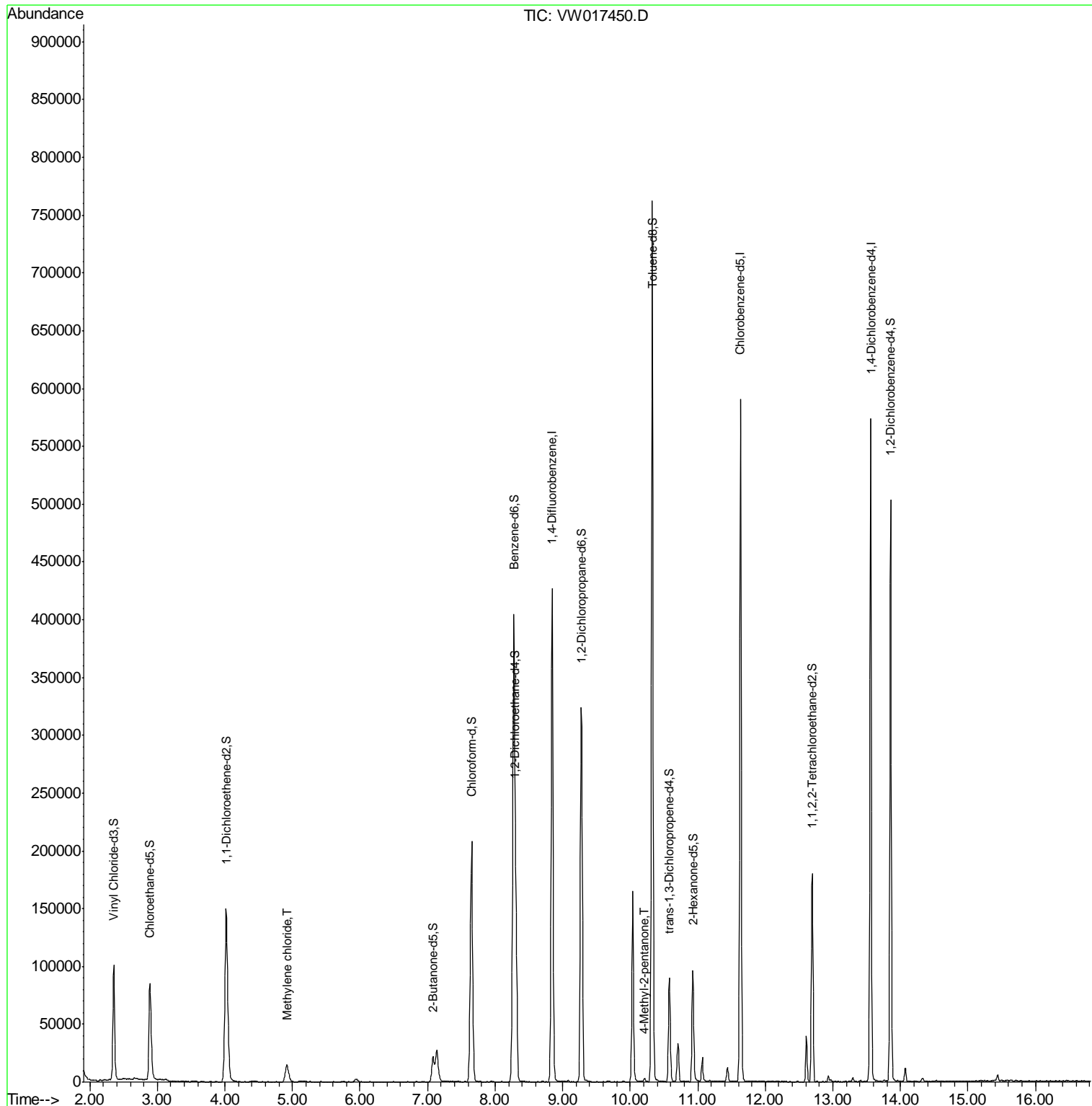
Target Compounds					Ovalue
16) Methylene chloride	4.92	84	13268	2.061	ug/L 96
43) 4-Methyl-2-pentanone	10.21	43	1870	0.839	ug/L 93

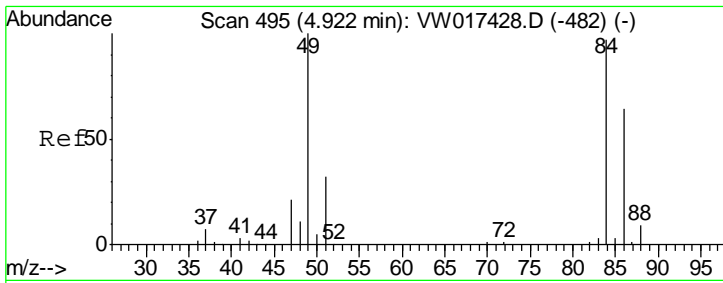
(#) = qualifier out of range (m) = manual integration (+) = signals summed

Data Path : Z:\VOASRV\HPCHEM1\MSVOA W\DATA\VW112020\
 Data File : VW017450.D
 Acq On : 21 Nov 2020 04:54
 Operator : SY/VA
 Sample : L4860-18
 Misc : 5.34G/10ML/MSVOA W/SOIL
 ALS Vial : 1 Sample Multiplier: 1

Instrument :
 MSVOA_W
 ClientSampleId :
 C0BE4

Quant Time: Nov 21 05:58:10 2020
 Quant Method : Z:\VOASRV\HPCHEM1\MSVOA_W\METHOD\SOM2WLM111820S.M
 Quant Title : VOC Analysis
 QLast Update : Sat Nov 21 02:27:17 2020
 Response via : Initial Calibration

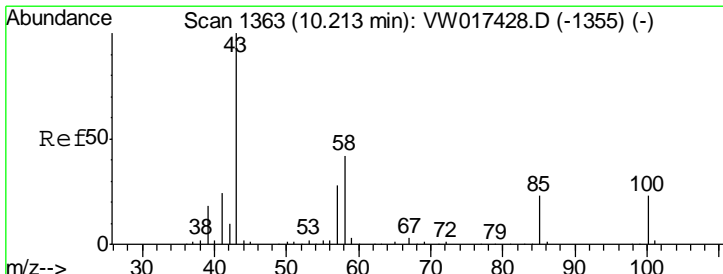
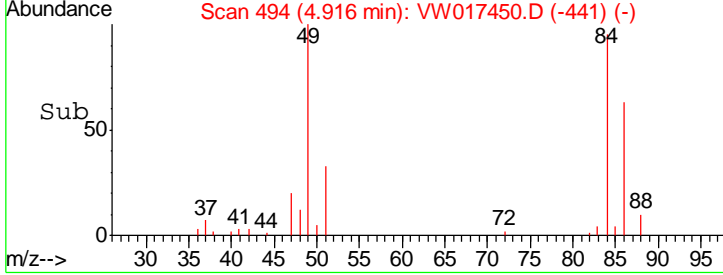
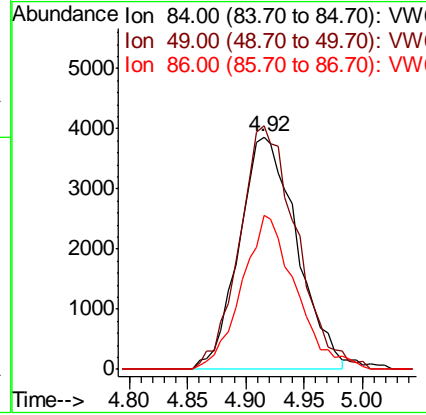
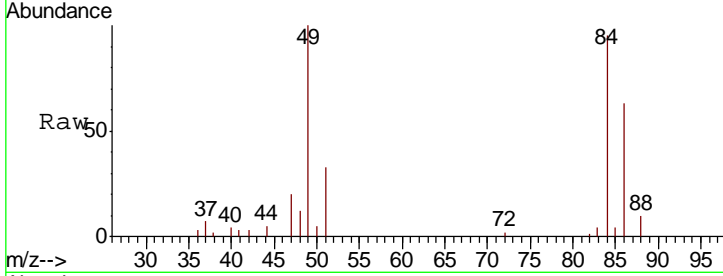




#16
 Methylene chloride
 Concen: 2.061 ug/L
 RT: 4.92 min Scan# 494
 Delta R.T. -0.01 min
 Lab File: VW017450.D
 Acq: 21 Nov 2020 04:54

Instrument :
 MSVOA_W
ClientSampled :
 COBE4

Tgt Ion	Resp	Lower	Upper
84	100		
49	104.7	71.5	132.9
86	66.2	42.8	79.4



#43
 4-Methyl-2-pentanone
 Concen: 0.839 ug/L
 RT: 10.21 min Scan# 1363
 Delta R.T. -0.00 min
 Lab File: VW017450.D
 Acq: 21 Nov 2020 04:54

Tgt Ion	Resp	Lower	Upper
43	100		
58	46.7	33.4	50.2
100	17.5	16.3	24.5

