

Data Path : Z:\VOASRV\HPCHEM1\MSVOA W\DATA\VW112218\
 Data File : VW007034.D
 Acq On : 22 Nov 2018 07:59
 Operator : VAY/AP
 Sample : J6028-02
 Misc : 5.39G/5ML/MSVOA W/SOIL
 ALS Vial : 47 Sample Multiplier: 1

Instrument :
 MSVOA_W
 ClientSampled :
 VOC-2

Integration Parameters: RTEINT.P

Integrator: RTE
 Smoothing : ON Filtering: 5
 Sampling : 1 Min Area: 3 % of largest Peak
 Start Thrs: 0.2 Max Peaks: 100
 Stop Thrs : 0 Peak Location: TOP

If leading or trailing edge < 100 prefer < Baseline drop else tangent >
 Peak separation: 5

Method : Z:\VOASRV\HPCHEM1\MSVOA_W\METHOD\82W112118S.M
 Title : SW846 8260

Signal : TIC

peak #	R.T. min	first scan	max scan	last scan	PK TY	peak height	corr. area	corr. % max.	% of total
1	1.959	4	9	14	rVB	4432	6935	1.92%	0.329%
2	2.349	69	73	80	rVB3	3832	6367	1.76%	0.302%
3	3.690	286	293	299	rBV4	1671	4022	1.11%	0.191%
4	4.922	481	495	504	rBV3	7049	22053	6.10%	1.046%
5	5.007	504	509	516	rVB3	1491	3764	1.04%	0.178%
6	7.147	851	860	866	rBV3	1512	4355	1.20%	0.206%
7	7.884	972	981	986	rBV	64080	148282	41.01%	7.031%
8	7.952	986	992	1003	rVB	134387	296904	82.12%	14.078%
9	8.311	1041	1051	1060	rBV	65792	147894	40.91%	7.013%
10	8.842	1130	1138	1151	rBV	183548	361534	100.00%	17.143%
11	10.323	1373	1381	1388	rBV	179865	324327	89.71%	15.379%
12	10.390	1388	1392	1401	rVB2	9443	17313	4.79%	0.821%
13	10.725	1437	1447	1463	rVB2	14642	57193	15.82%	2.712%
14	11.634	1588	1596	1608	rBV	183890	308379	85.30%	14.622%
15	12.621	1751	1758	1766	rBV	120629	199090	55.07%	9.440%
16	13.560	1905	1912	1919	rBV	104632	169009	46.75%	8.014%
17	14.079	1993	1997	2008	rVB2	8755	16159	4.47%	0.766%
18	14.731	2100	2104	2112	rVB3	3690	6127	1.69%	0.291%
19	15.511	2225	2232	2236	rBV	4349	9255	2.56%	0.439%

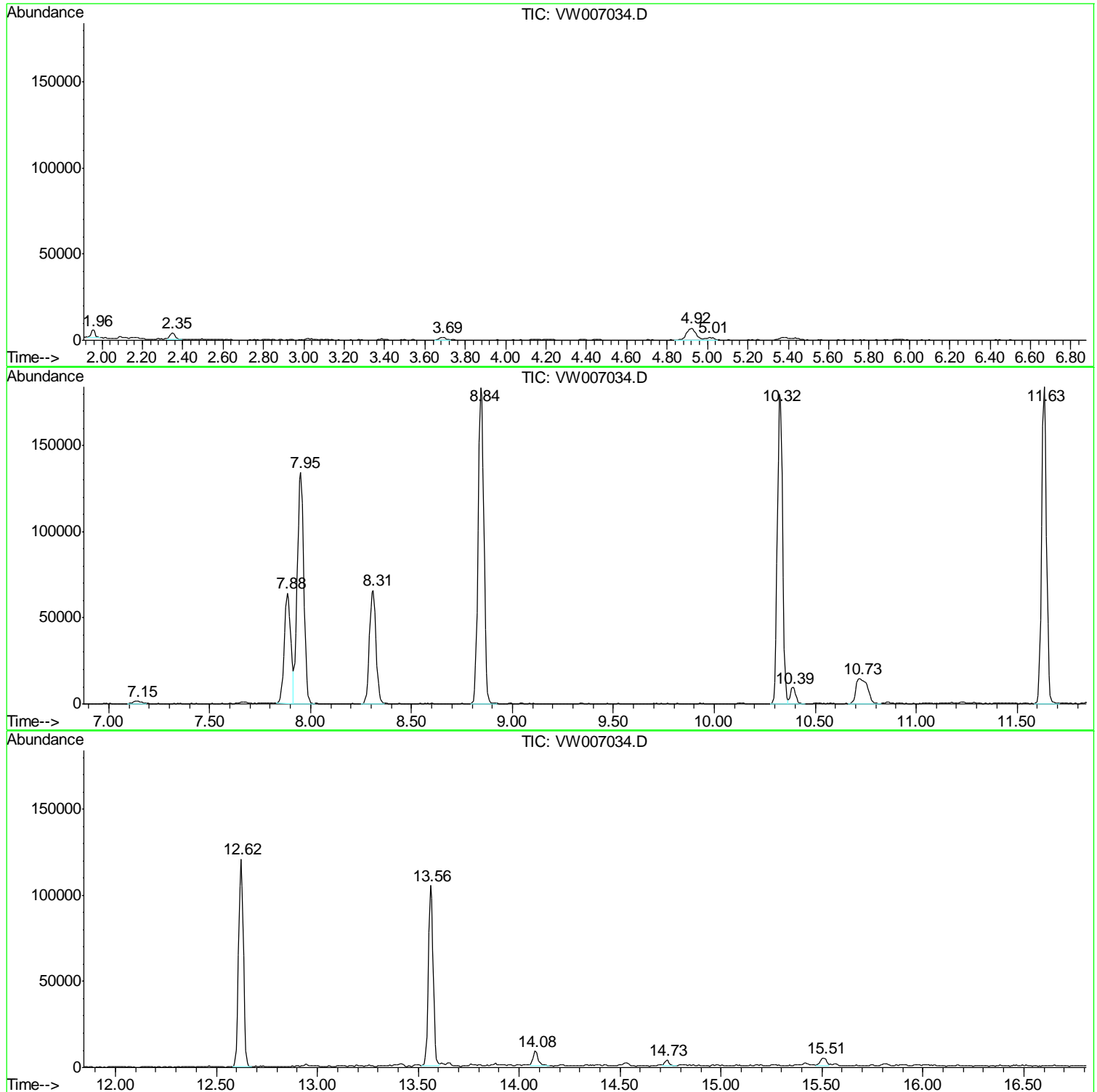
Sum of corrected areas: 2108962

Data Path : Z:\VOASRV\HPCHEM1\MSVOA W\DATA\VW112218\
Data File : VW007034.D
Acq On : 22 Nov 2018 07:59
Operator : VAY/AP
Sample : J6028-02
Misc : 5.39G/5ML/MSVOA W/SOIL
ALS Vial : 47 Sample Multiplier: 1

Instrument :
MSVOA_W
ClientSampleId :
VOC-2

Quant Method : Z:\VOASRV\HPCHEM1\MSVOA_W\METHOD\82W112118S.M
Quant Title : SW846 8260

TIC Library : C:\DATABASE\NIST11.L
TIC Integration Parameters: LSCINT.P



Data Path : Z:\VOASRV\HPCHEM1\MSVOA_W\DATA\VW112218\
Data File : VW007034.D
Acq On : 22 Nov 2018 07:59
Operator : VAY/AP
Sample : J6028-02
Misc : 5.39G/5ML/MSVOA_W/SOIL
ALS Vial : 47 Sample Multiplier: 1

Instrument :
MSVOA_W
ClientSampleId :
VOC-2

Quant Method : Z:\VOASRV\HPCHEM1\MSVOA_W\METHOD\82W112118S.M
Quant Title : SW846 8260

TIC Library : C:\DATABASE\NIST11.L
TIC Integration Parameters: LSCINT.P

No Library Search Compounds Detected

Data Path : Z:\VOASRV\HPCHEM1\MSVOA_W\DATA\VW112218\
Data File : VW007034.D
Acq On : 22 Nov 2018 07:59
Operator : VAY/AP
Sample : J6028-02
Misc : 5.39G/5ML/MSVOA_W/SOIL
ALS Vial : 47 Sample Multiplier: 1

Instrument :
MSVOA_W
ClientSampleId :
VOC-2

Quant Method : Z:\VOASRV\HPCHEM1\MSVOA_W\METHOD\82W112118S.M
Quant Title : SW846 8260

TIC Library : C:\DATABASE\NIST11.L
TIC Integration Parameters: LSCINT.P

TIC Top Hit name	RT	EstConc	Units	Response	--Internal Standard--			
					#	RT	Resp	Conc
