

Data Path : Z:\VOASRV\HPCHEM1\MSVOA W\DATA\VW112618\
 Data File : VW007045.D
 Acq On : 26 Nov 2018 14:18
 Operator : VAY/AP
 Sample : J6028-02RE
 Misc : 5.61G/5ML/MSVOA W/SOIL
 ALS Vial : 10 Sample Multiplier: 1

Instrument :
 MSVOA_W
 ClientSampleId :
 VOC-2

Quant Time: Nov 27 05:24:11 2018
 Quant Method : Z:\VOASRV\HPCHEM1\MSVOA_W\METHOD\82W112118S.M
 Quant Title : SW846 8260
 QLast Update : Wed Nov 21 03:23:02 2018
 Response via : Initial Calibration

Internal Standards	R.T.	QIon	Response	Conc	Units	Dev(Min)
1) Pentafluorobenzene	7.95	168	109991	50.00	ug/l	0.00
34) 1,4-Difluorobenzene	8.85	114	171513	50.00	ug/l	0.00
63) Chlorobenzene-d5	11.63	117	138844	50.00	ug/l	0.00
72) 1,4-Dichlorobenzene-d4	13.56	152	44555	50.00	ug/l	0.00

System Monitoring Compounds

33) 1,2-Dichloroethane-d4	8.31	65	57766	53.64	ug/l	0.00
Spiked Amount				50.000		
			Recovery	=	107.28%	
35) Dibromofluoromethane	7.89	113	50963	52.62	ug/l	0.00
Spiked Amount				50.000		
			Recovery	=	105.24%	
50) Toluene-d8	10.33	98	201640	47.14	ug/l	0.00
Spiked Amount				50.000		
			Recovery	=	94.28%	
62) 4-Bromofluorobenzene	12.62	95	60009	35.65	ug/l	0.00
Spiked Amount				50.000		
			Recovery	=	71.30%	

Target Compounds

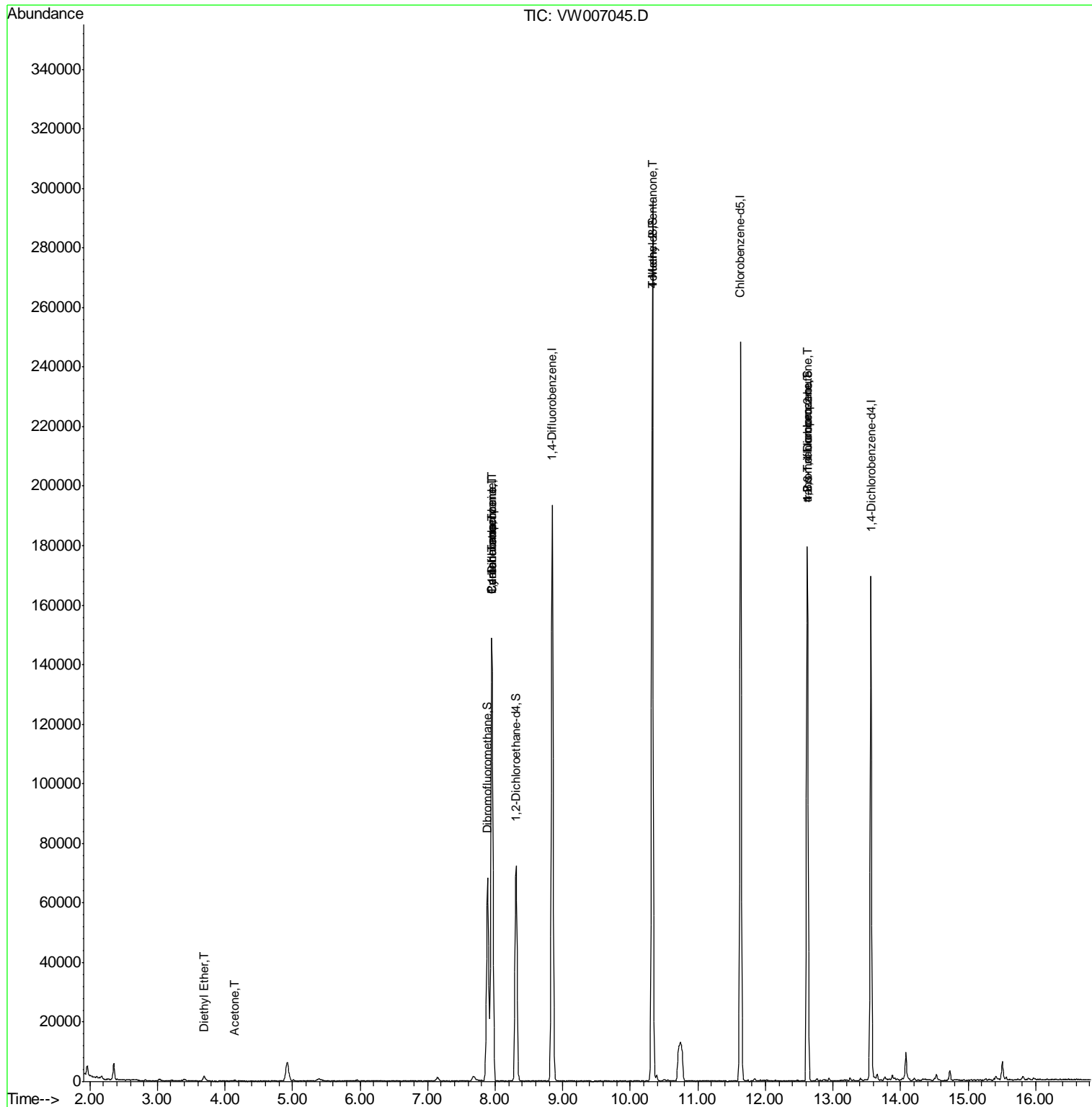
					Qvalue
8) Diethyl Ether	3.69	74	991	1.756 ug/l	95
16) Acetone	4.14	43	214	1.369 ug/l #	44
20) Methylene Chloride	4.92	84	5024	Below Cal	96
31) Cyclohexane	7.96	56	2350	1.133 ug/l #	28
36) 1,1-Dichloropropene	7.95	75	8582	5.120 ug/l #	49
38) Carbon Tetrachloride	7.95	117	11379	7.090 ug/l #	16
51) 4-Methyl-2-Pentanone	10.33	43	871	1.489 ug/l #	1
76) 1,2,3-Trichloropropane	12.62	75	29183	83.354 ug/l #	100
81) trans-1,4-Dichloro-2-buten	12.62	75	29183	209.268 ug/l #	10

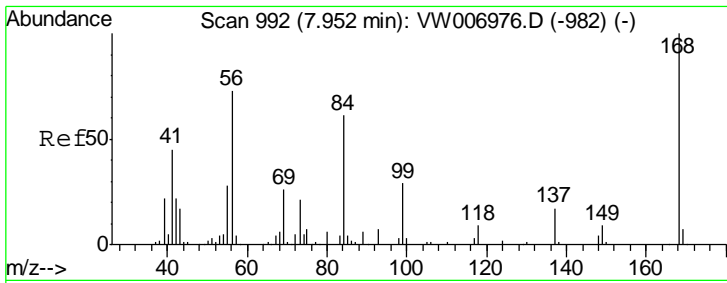
(#) = qualifier out of range (m) = manual integration (+) = signals summed

Data Path : Z:\VOASRV\HPCHEM1\MSVOA W\DATA\VW112618\
 Data File : VW007045.D
 Acq On : 26 Nov 2018 14:18
 Operator : VAY/AP
 Sample : J6028-02RE
 Misc : 5.61G/5ML/MSVOA W/SOIL
 ALS Vial : 10 Sample Multiplier: 1

Instrument :
 MSVOA_W
 ClientSampled :
 VOC-2

Quant Time: Nov 27 05:24:11 2018
 Quant Method : Z:\VOASRV\HPCHEM1\MSVOA_W\METHOD\82W112118S.M
 Quant Title : SW846 8260
 QLast Update : Wed Nov 21 03:23:02 2018
 Response via : Initial Calibration

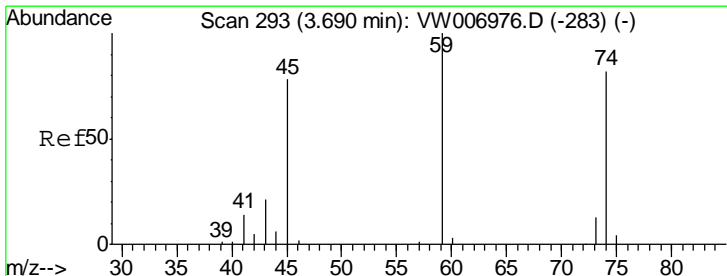
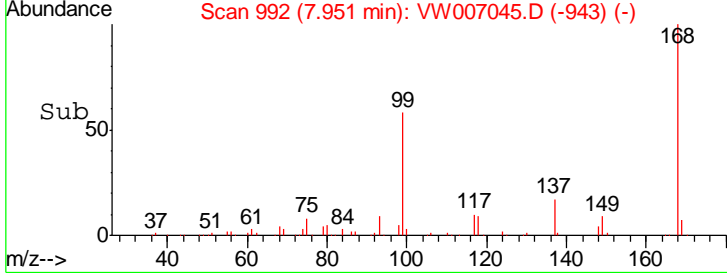
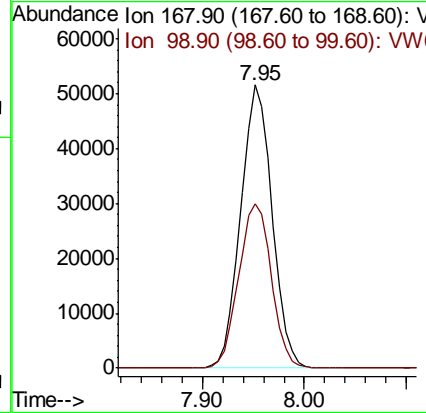
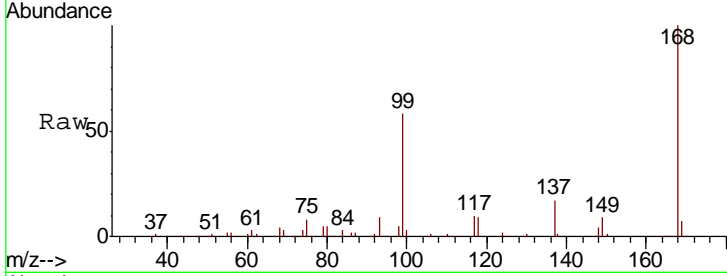




#1
 Pentafluorobenzene
 Concen: 50.000 ug/l
 RT: 7.95 min Scan# 992
 Delta R.T. -0.00 min
 Lab File: VW007045.D
 Acq: 26 Nov 2018 14:18

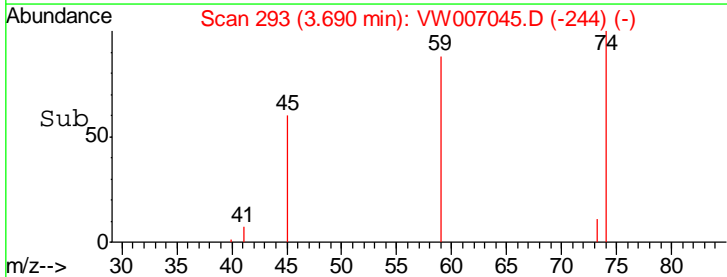
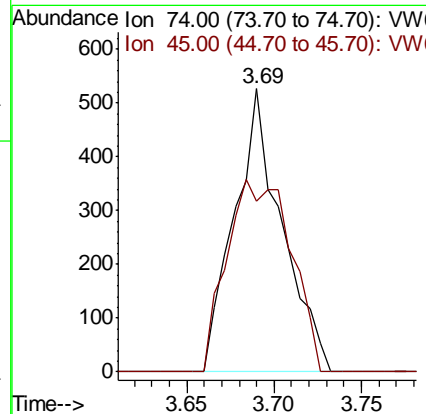
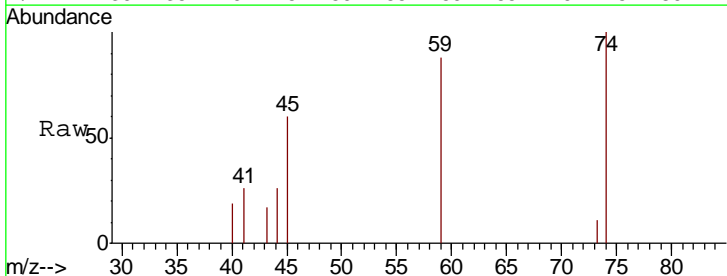
Instrument :
 MSVOA_W
ClientSampled :
 VOC-2

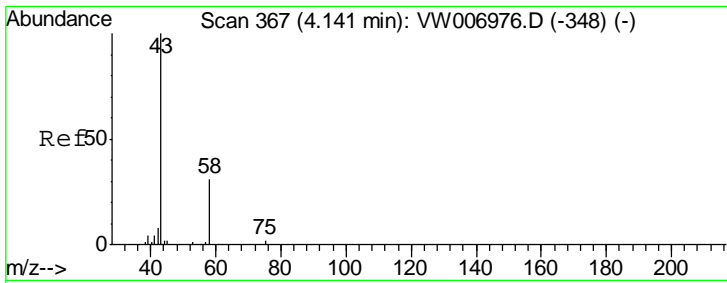
Tgt Ion: 168 Resp: 109991
 Ion Ratio Lower Upper
 168 100
 99 58.0 48.2 72.4



#8
 Diethyl Ether
 Concen: 1.756 ug/l
 RT: 3.69 min Scan# 293
 Delta R.T. -0.00 min
 Lab File: VW007045.D
 Acq: 26 Nov 2018 14:18

Tgt Ion: 74 Resp: 991
 Ion Ratio Lower Upper
 74 100
 45 92.1 48.4 145.2

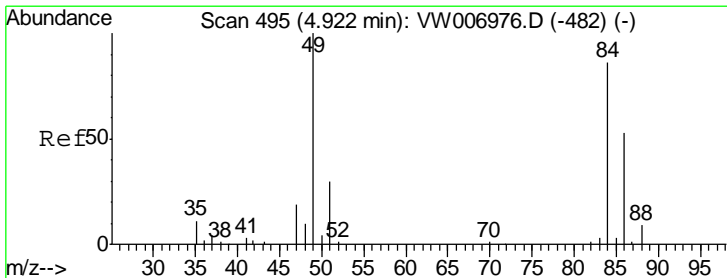
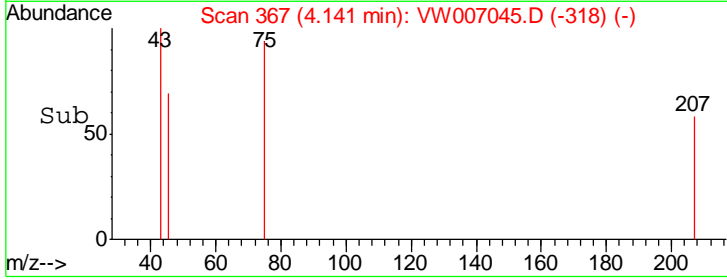
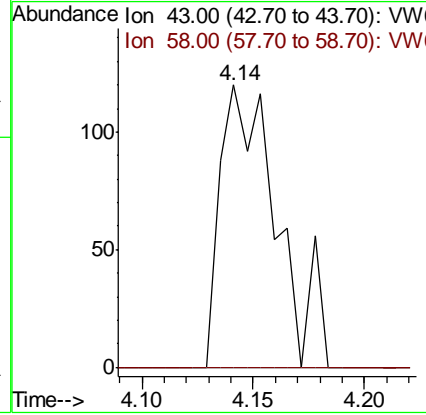
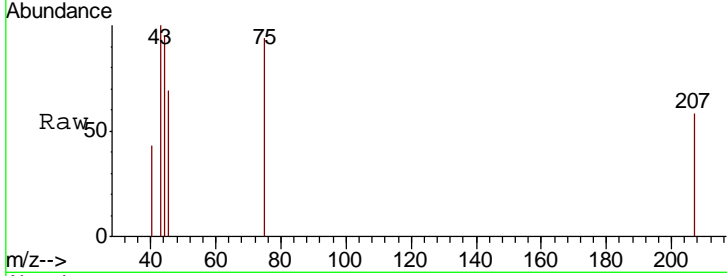




#16
 Acetone
 Concen: 1.369 ug/l
 RT: 4.14 min Scan# 367
 Delta R.T. -0.00 min
 Lab File: VW007045.D
 Acq: 26 Nov 2018 14:18

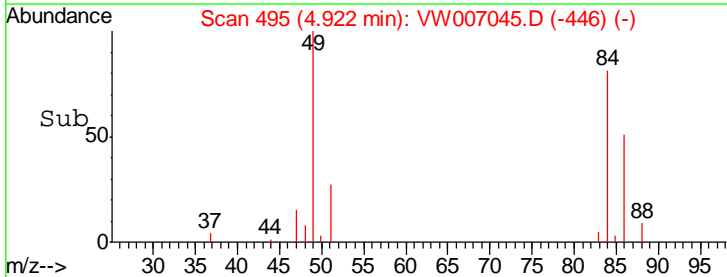
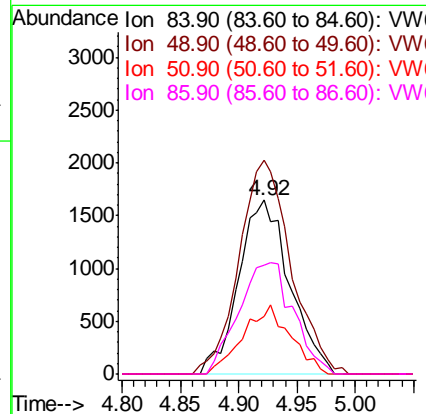
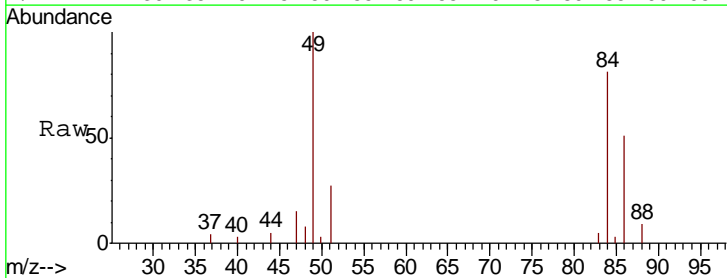
Instrument :
 MSVOA_W
 ClientSampled :
 VOC-2

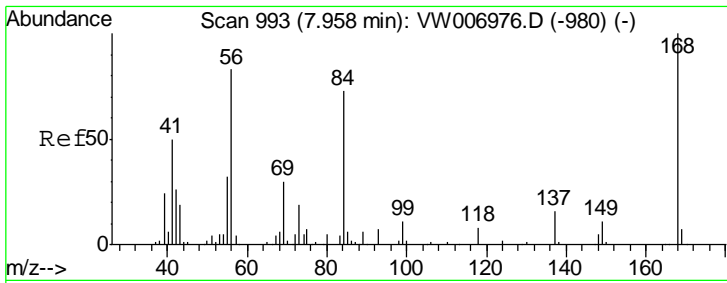
Tgt Ion: 43 Resp: 214
 Ion Ratio Lower Upper
 43 100
 58 0.0 24.8 37.2#



#20
 Methylene Chloride
 Concen: Below Cal
 RT: 4.92 min Scan# 495
 Delta R.T. 0.00 min
 Lab File: VW007045.D
 Acq: 26 Nov 2018 14:18

Tgt Ion: 84 Resp: 5024
 Ion Ratio Lower Upper
 84 100
 49 122.8 93.4 140.0
 51 32.9 28.4 42.6
 86 62.5 49.8 74.8

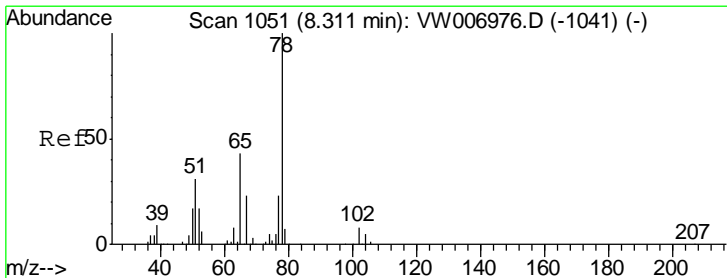
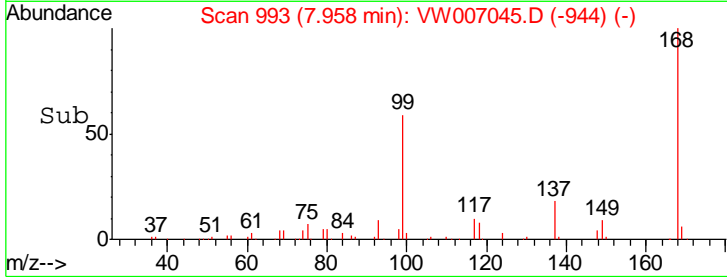
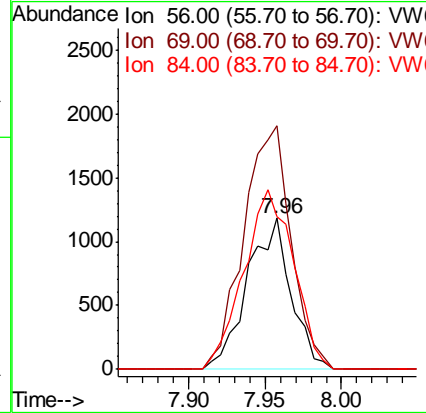
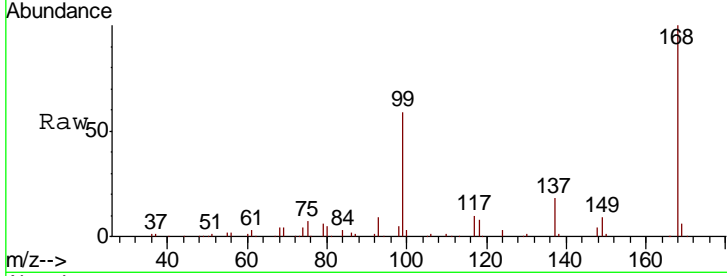




#31
 Cyclohexane
 Concen: 1.133 ug/l
 RT: 7.96 min Scan# 993
 Delta R.T. -0.00 min
 Lab File: VW007045.D
 Acq: 26 Nov 2018 14:18

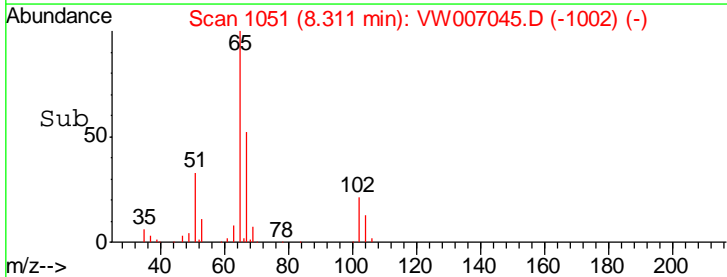
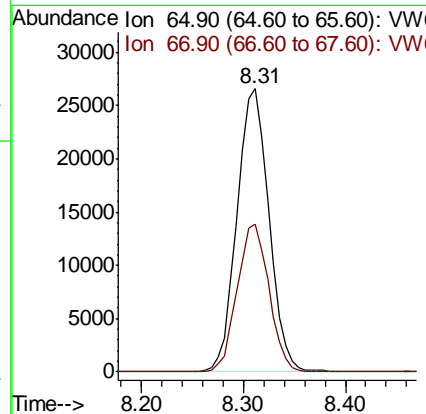
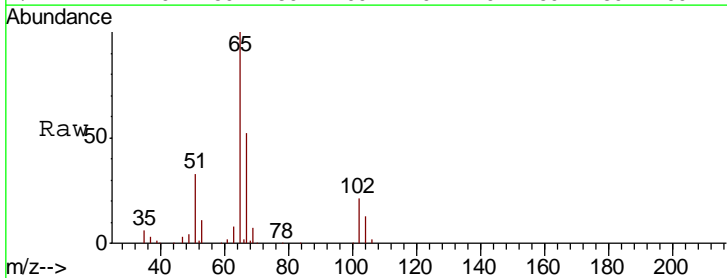
Instrument :
 MSVOA_W
 ClientSampled :
 VOC-2

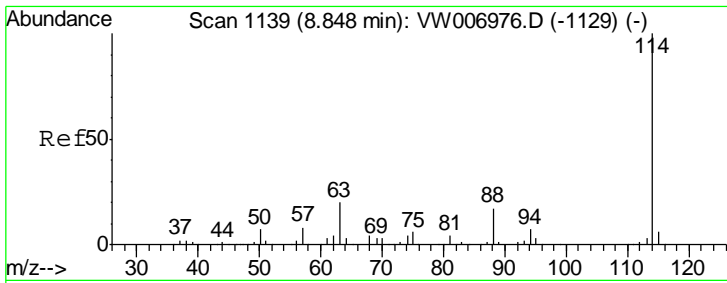
Tgt Ion	Resp	Lower	Upper
56	100		
69	161.1	29.1	43.7#
84	101.4	70.6	105.8



#33
 1,2-Dichloroethane-d4
 Concen: 53.644 ug/l
 RT: 8.31 min Scan# 1051
 Delta R.T. -0.00 min
 Lab File: VW007045.D
 Acq: 26 Nov 2018 14:18

Tgt Ion	Resp	Lower	Upper
65	100		
67	52.0	0.0	106.2

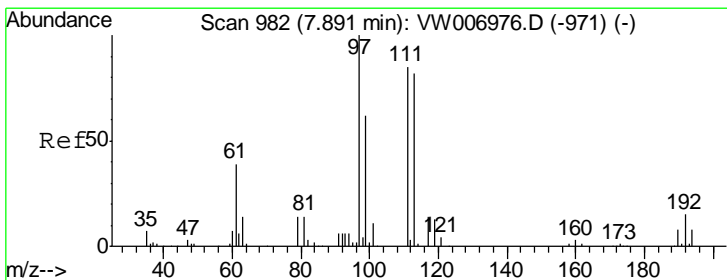
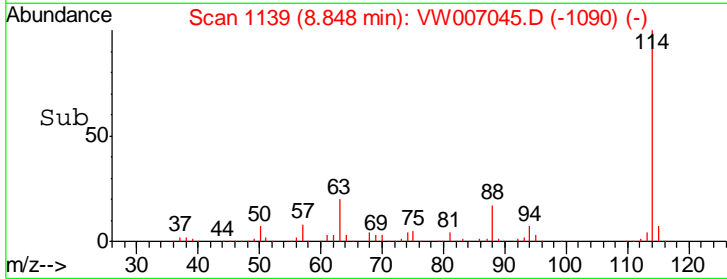
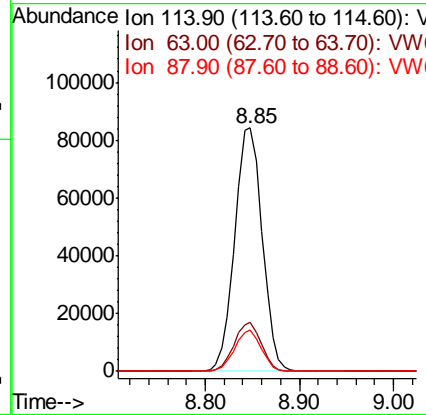
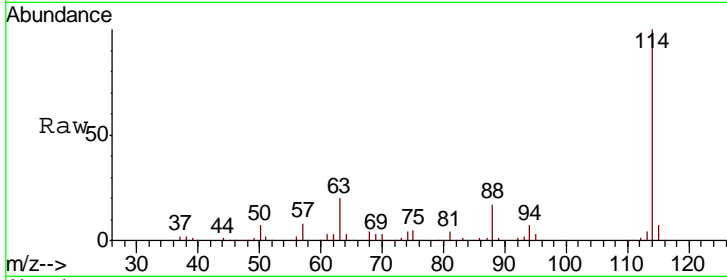




#34
 1,4-Difluorobenzene
 Concen: 50.000 ug/l
 RT: 8.85 min Scan# 1139
 Delta R.T. -0.00 min
 Lab File: VW007045.D
 Acq: 26 Nov 2018 14:18

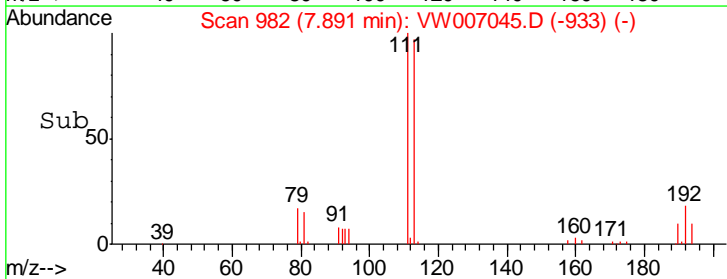
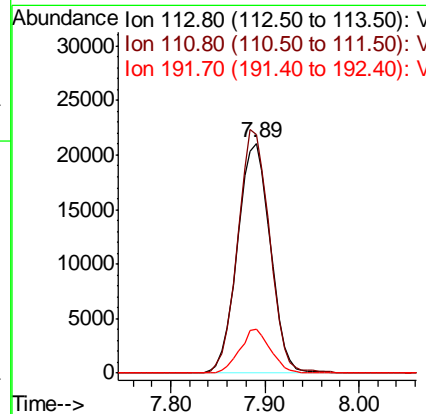
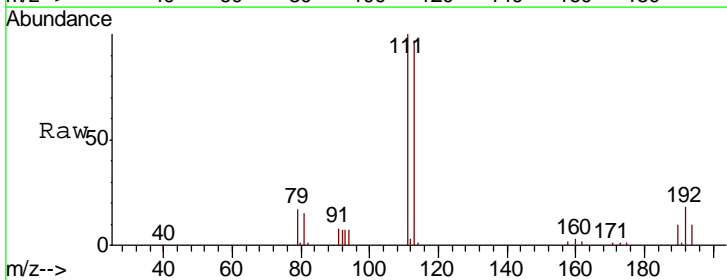
Instrument :
 MSVOA_W
 ClientSampled :
 VOC-2

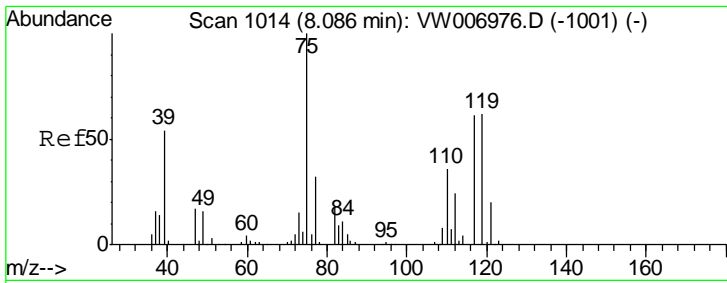
Tgt Ion	Resp	Lower	Upper
114	171513		
63	20.2	0.0	39.4
88	17.0	0.0	34.2



#35
 Dibromofluoromethane
 Concen: 52.616 ug/l
 RT: 7.89 min Scan# 982
 Delta R.T. -0.00 min
 Lab File: VW007045.D
 Acq: 26 Nov 2018 14:18

Tgt Ion	Resp	Lower	Upper
113	50963		
111	102.6	81.0	121.6
192	17.8	15.0	22.6

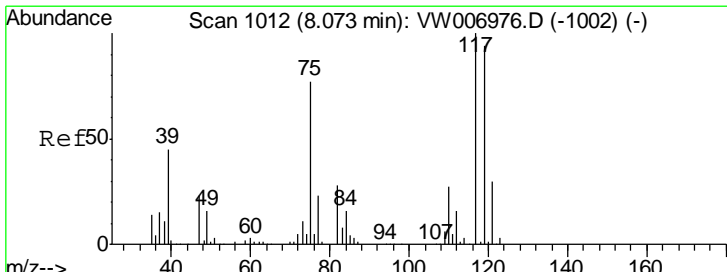
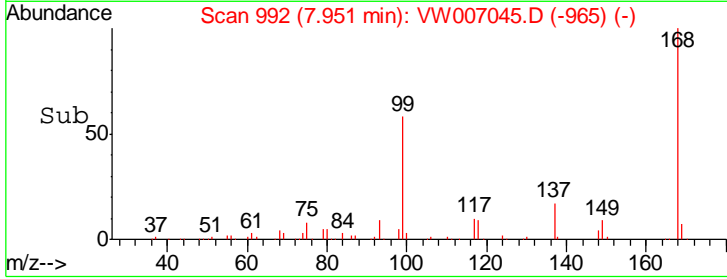
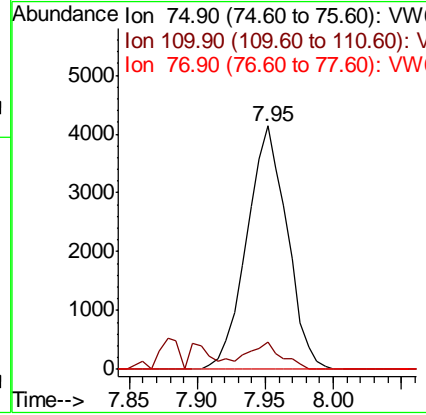
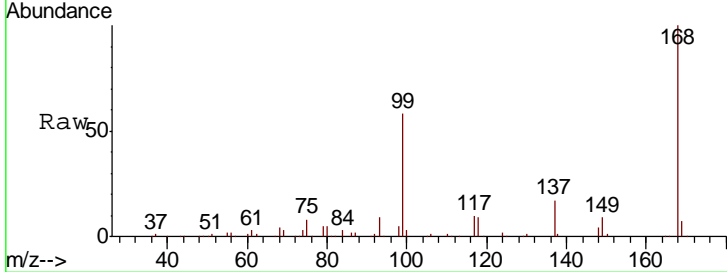




#36
 1,1-Dichloropropene
 Concen: 5.120 ug/l
 RT: 7.95 min Scan# 992
 Delta R.T. -0.13 min
 Lab File: VW007045.D
 Acq: 26 Nov 2018 14:18

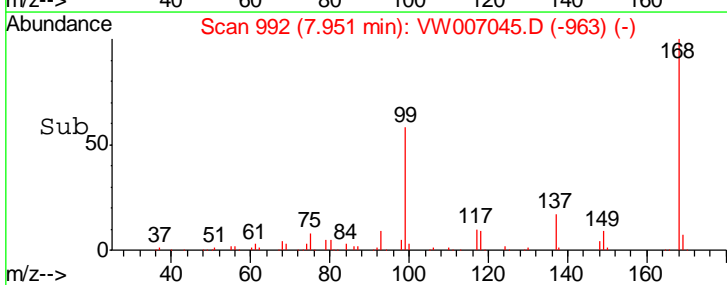
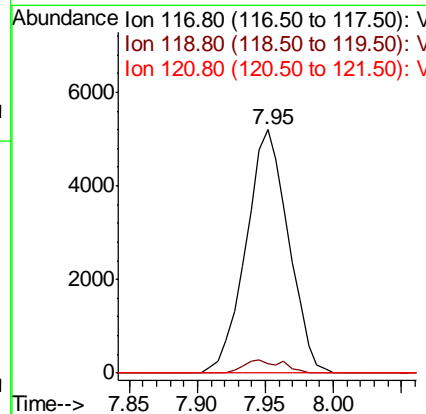
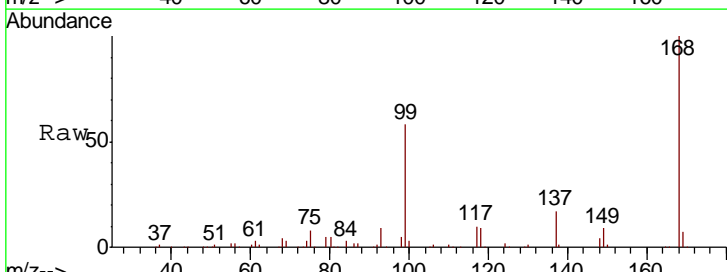
Instrument :
 MSVOA_W
 ClientSampled :
 VOC-2

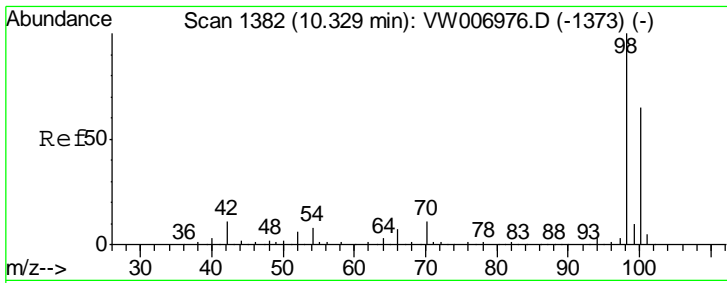
Tgt Ion	Resp	Lower	Upper
75	100		
110	8.9	18.0	54.0#
77	0.0	24.9	37.3#



#38
 Carbon Tetrachloride
 Concen: 7.090 ug/l
 RT: 7.95 min Scan# 992
 Delta R.T. -0.12 min
 Lab File: VW007045.D
 Acq: 26 Nov 2018 14:18

Tgt Ion	Resp	Lower	Upper
117	100		
119	4.0	74.9	112.3#
121	0.0	23.6	35.4#

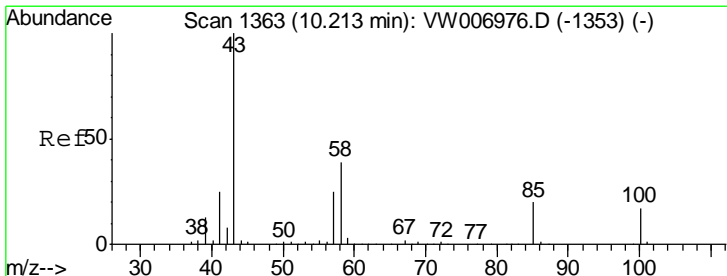
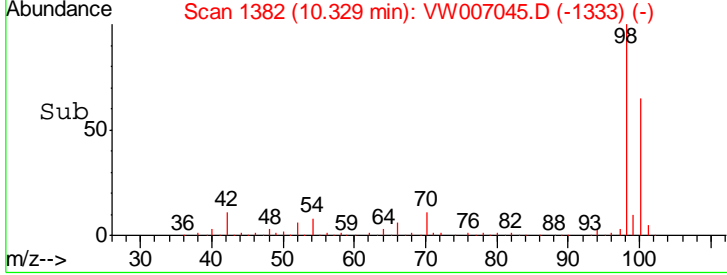
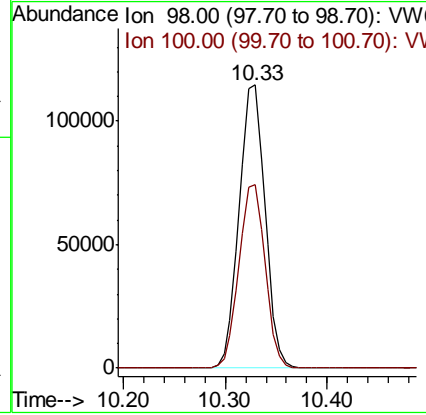
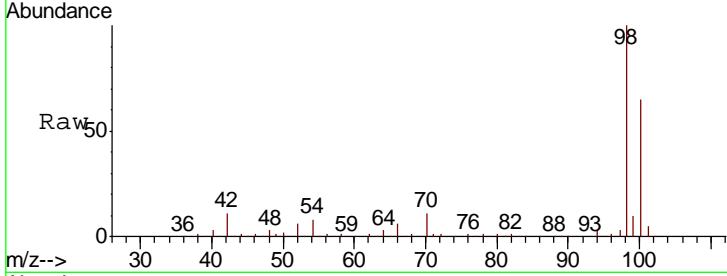




#50
 Toluene-d8
 Concen: 47.144 ug/l
 RT: 10.33 min Scan# 1382
 Delta R.T. -0.00 min
 Lab File: VW007045.D
 Acq: 26 Nov 2018 14:18

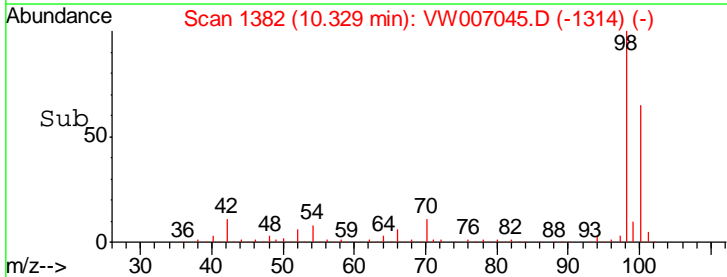
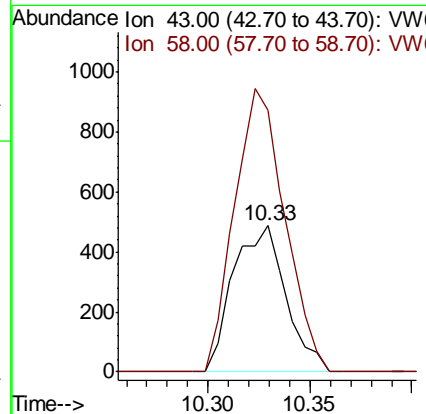
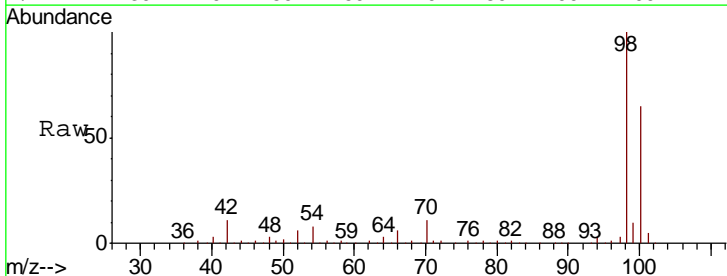
Instrument : MSVOA_W
 ClientSampled : VOC-2

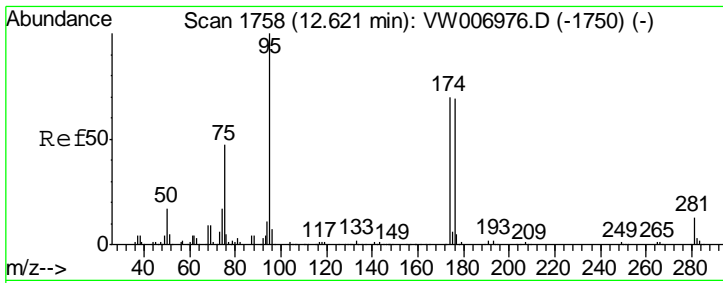
Tgt Ion	Resp	Lower	Upper
98	100		
100	65.4	52.2	78.2



#51
 4-Methyl-2-Pentanone
 Concen: 1.489 ug/l
 RT: 10.33 min Scan# 1382
 Delta R.T. 0.12 min
 Lab File: VW007045.D
 Acq: 26 Nov 2018 14:18

Tgt Ion	Resp	Lower	Upper
43	100		
58	185.3	31.8	47.6#

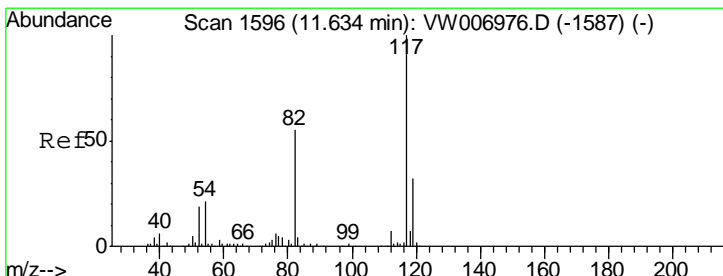
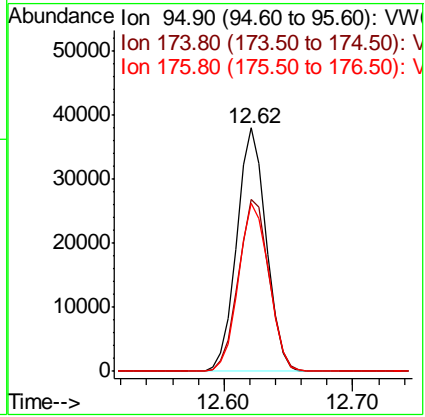
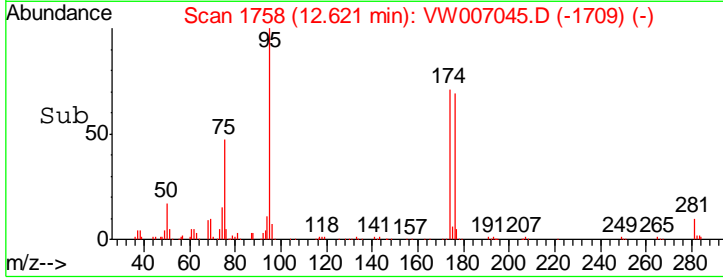
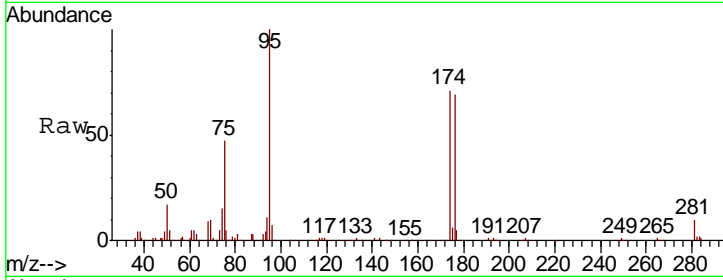




#62
 4-Bromofluorobenzene
 Concen: 35.654 ug/l
 RT: 12.62 min Scan# 1758
 Delta R.T. -0.00 min
 Lab File: VW007045.D
 Acq: 26 Nov 2018 14:18

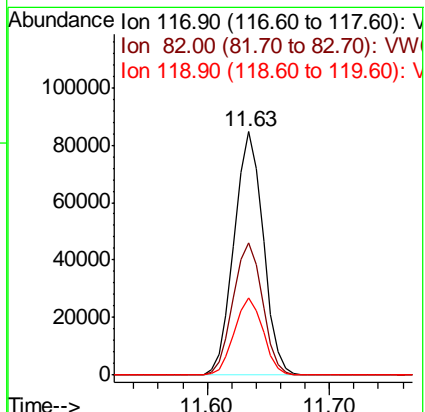
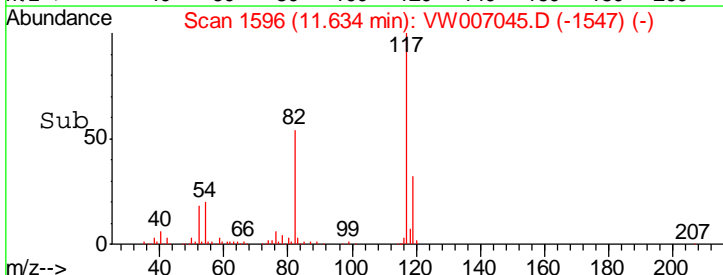
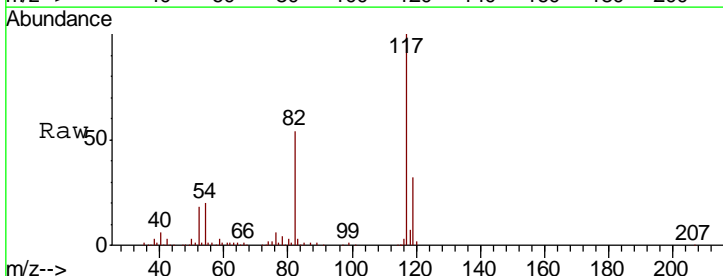
Instrument :
 MSVOA_W
 ClientSampled :
 VOC-2

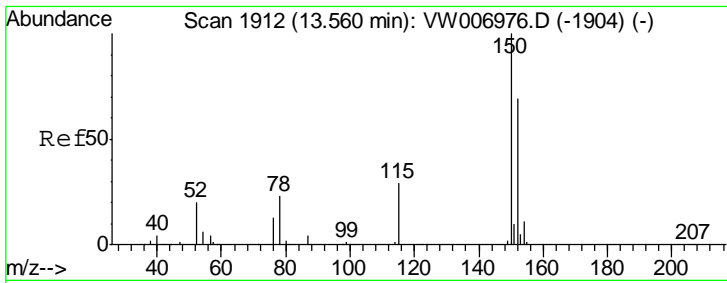
Tgt Ion	Resp	Lower	Upper
95	60009		
174	73.5	0.0	143.6
176	71.1	0.0	140.4



#63
 Chlorobenzene-d5
 Concen: 50.000 ug/l
 RT: 11.63 min Scan# 1596
 Delta R.T. -0.00 min
 Lab File: VW007045.D
 Acq: 26 Nov 2018 14:18

Tgt Ion	Resp	Lower	Upper
117	138844		
82	54.3	44.2	66.2
119	31.8	25.9	38.9

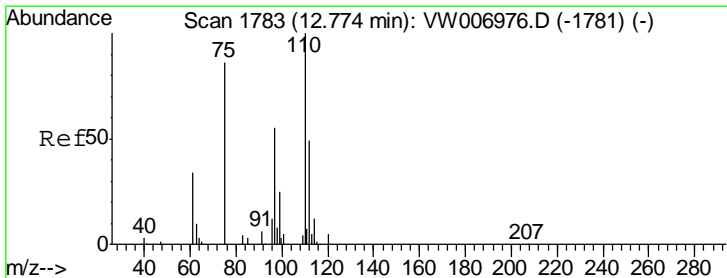
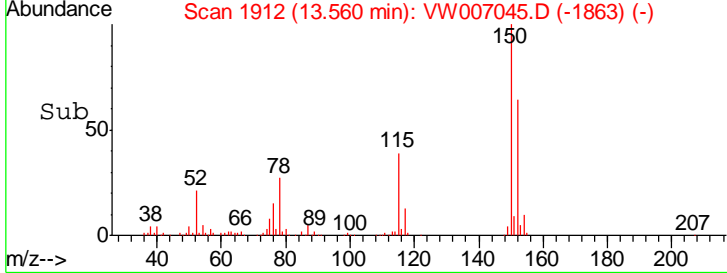
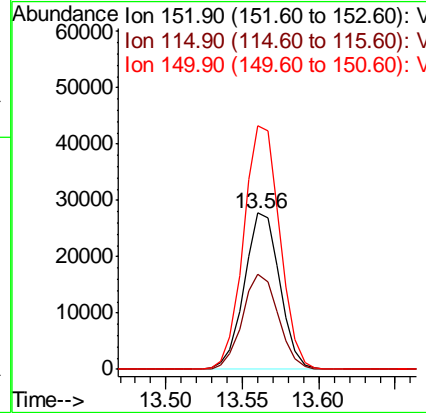
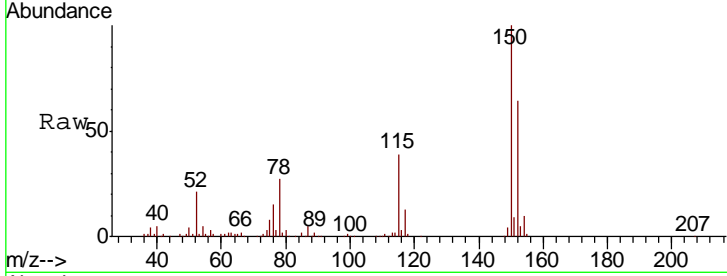




#72
 1,4-Dichlorobenzene-d4
 Concen: 50.000 ug/l
 RT: 13.56 min Scan# 1912
 Delta R.T. -0.00 min
 Lab File: VW007045.D
 Acq: 26 Nov 2018 14:18

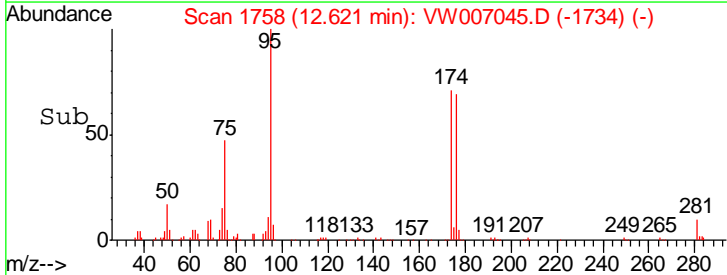
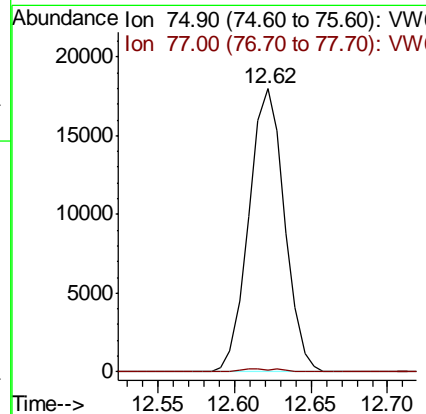
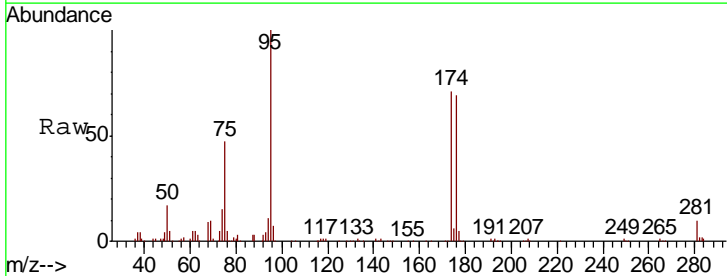
Instrument :
 MSVOA_W
 ClientSampled :
 VOC-2

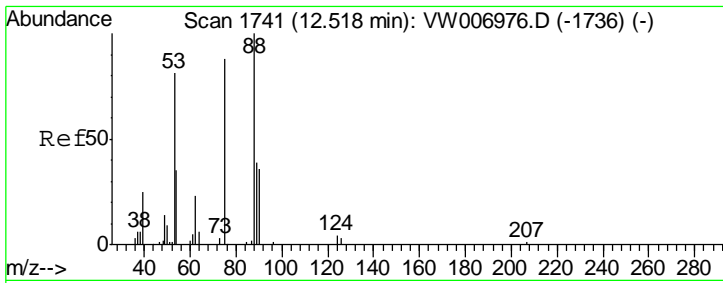
Tgt Ion	Resp	Lower	Upper
152	100		
115	61.9	31.4	94.2
150	158.8	0.0	353.4



#76
 1,2,3-Trichloropropane
 Concen: 83.354 ug/l
 RT: 12.62 min Scan# 1758
 Delta R.T. -0.15 min
 Lab File: VW007045.D
 Acq: 26 Nov 2018 14:18

Tgt Ion	Resp	Lower	Upper
75	100		
77	1.1	0.0	0.0#





#81
 trans-1,4-Dichloro-2-butene
 Concen: 209.268 ug/l
 RT: 12.62 min Scan# 1758
 Delta R.T. 0.10 min
 Lab File: VW007045.D
 Acq: 26 Nov 2018 14:18

Instrument :
 MSVOA_W
 ClientSampleId :
 VOC-2

Tot Ion	Ratio	Lower	Upper
75	100		
53	0.0	77.6	116.4#
89	0.0	39.3	58.9#

