

# Quantitation Report (QT/LSC Reviewed)

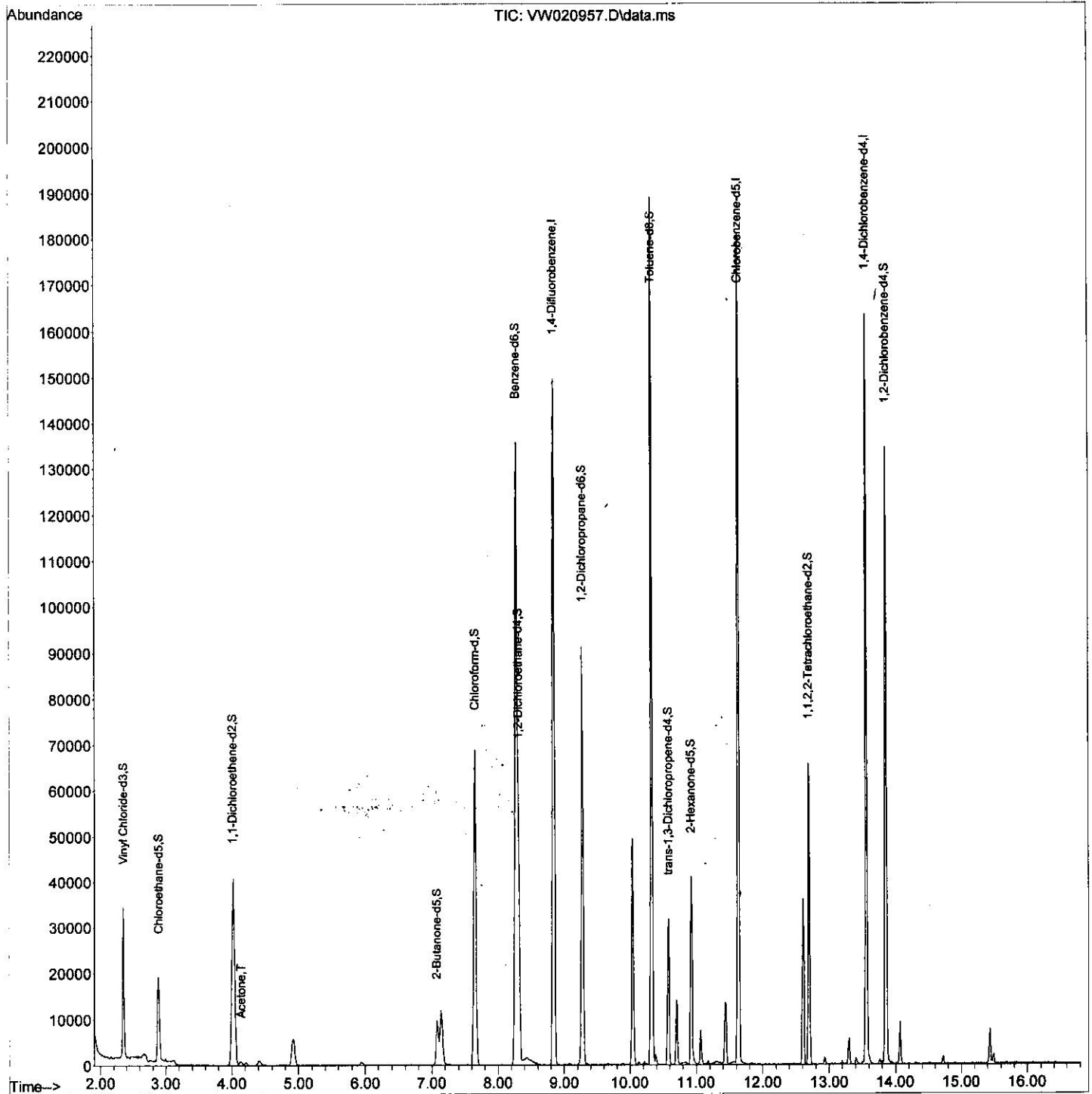
Data Path : Z:\voasrv\HPCHEM1\MSVOA\_W\Data\VW112621\  
 Data File : VW020957.D  
 Acq On : 26 Nov 2021 15:03  
 Operator : SY/VA  
 Sample : M4833-07  
 Misc : 6.36g/10.0mL/MSVOA\_W/SOIL  
 ALS Vial : 12 Sample Multiplier: 1

Instrument :  
 MSVOA\_W  
 Client Sampled :  
 ESQM7

Quant Time: Nov 27 00:58:21 2021  
 Quant Method : Z:\voasrv\HPCHEM1\MSVOA\_W\Method\SFAMWLM111521SMA.M  
 Quant Title : SFAM01.0  
 QLast Update : Sat Nov 27 00:54:15 2021  
 Response via : Initial Calibration

Manual Integrations APPROVED

Reviewed By : Semsettin Yesilyurt 11/28/2021  
 Supervised By : Mahesh Dadoda 11/29/2021



# Quantitation Report (Qedit)

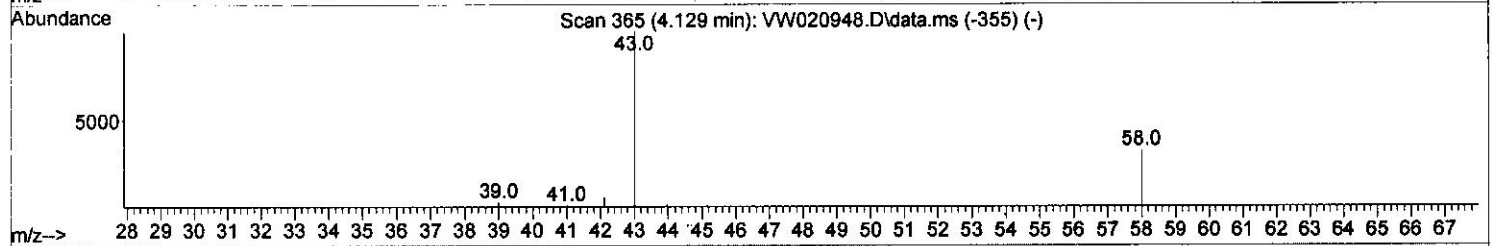
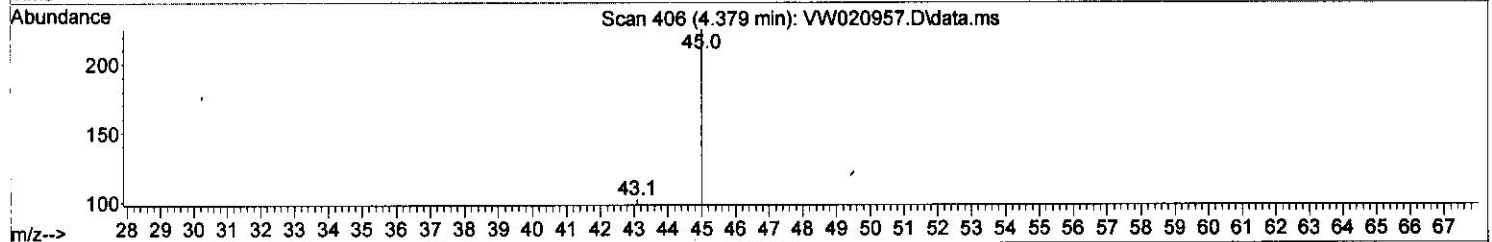
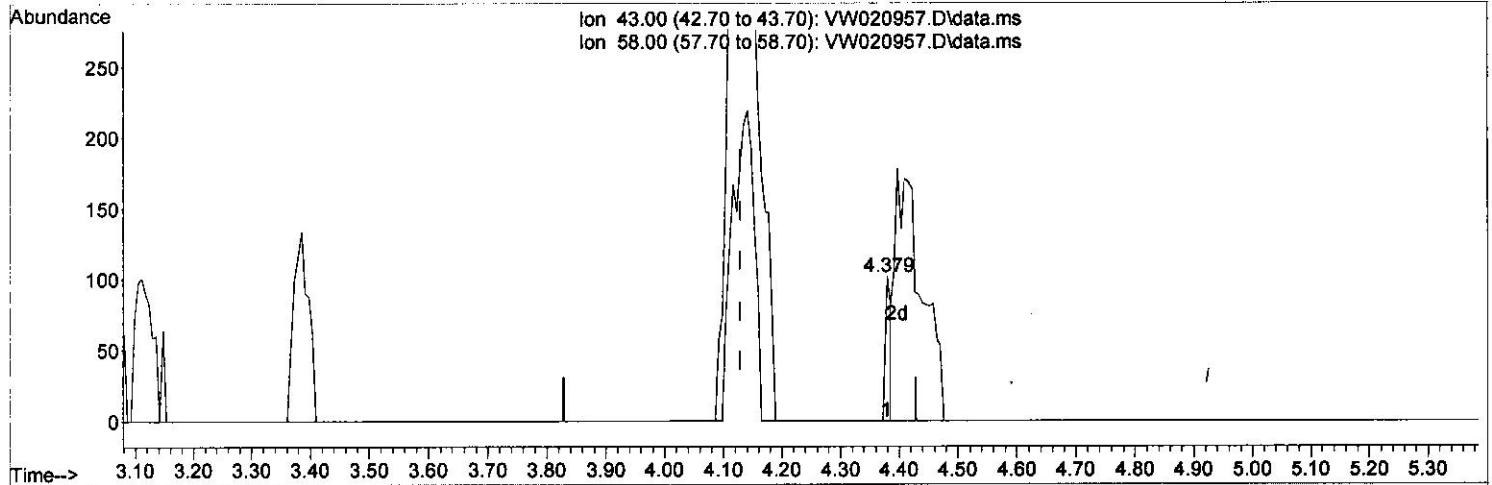
Data Path : Z:\voasrv\HPCHEM1\MSVOA\_W\Data\VW112621\  
 Data File : VW020957.D  
 Acq On : 26 Nov 2021 15:03  
 Operator : SY/VA  
 Sample : M4833-07  
 Misc : 6.36g/10.0mL/MSVOA\_W/SOIL  
 ALS Vial : 12 Sample Multiplier: 1

Instrument :  
 MSVOA\_W  
 ClientSampled :  
 ESQM7

Manual IntegrationsAPPROVED

Quant Time: Nov 27 00:58:21 2021  
 Quant Method : Z:\voasrv\HPCHEM1\MSVOA\_W\Method\SFAMWLM111521SMA.M  
 Quant Title : SFAM01.0  
 QLast Update : Sat Nov 27 00:54:15 2021  
 Response via : Initial Calibration

Reviewed By :Semsettin Yesilyurt 11/28/2021  
 Supervised By :Mahesh Dadoda 11/29/2021



TIC: VW020957.D\data.ms

(13) Acetone (T)

4.379min (+ 0.249) 0.20 ug/L

response 67

Ion	Exp%	Act%
43.00	100.00	100.00
58.00	26.40	843.28#
0.00	0.00	0.00
0.00	0.00	0.00

# Quantitation Report (Qedit)

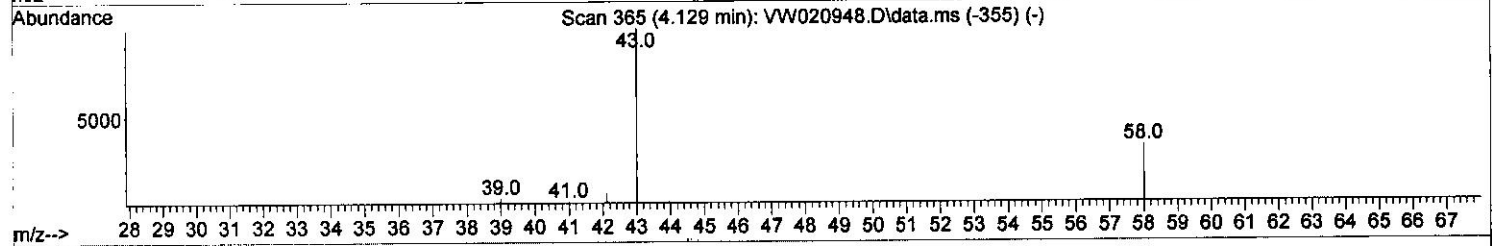
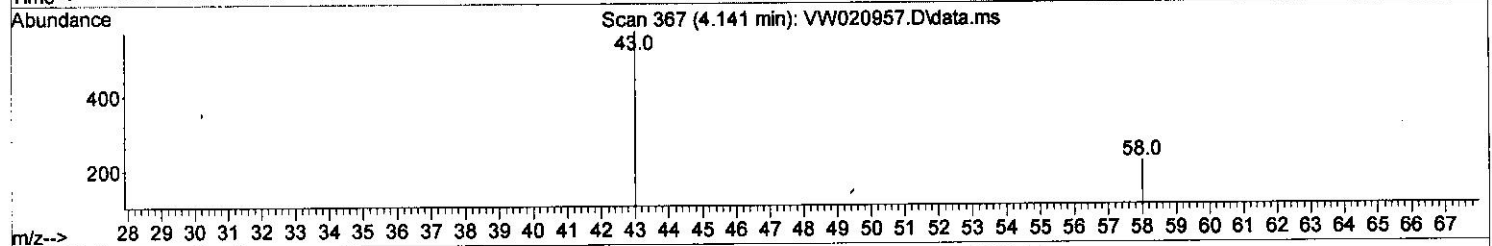
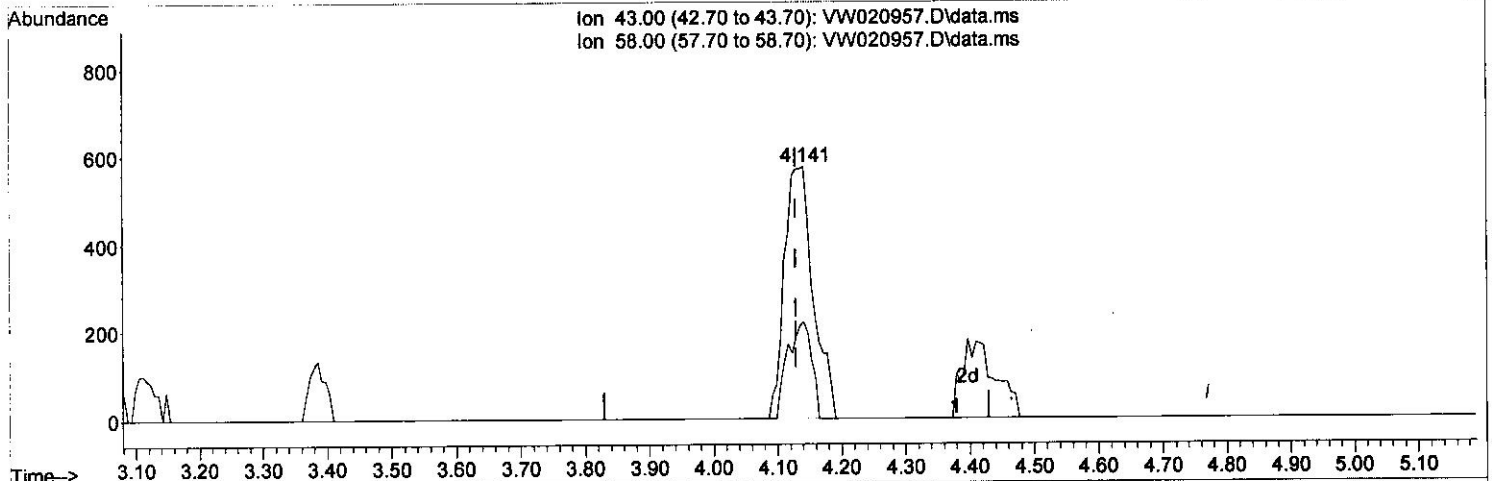
Data Path : Z:\voasrv\HPCHEM1\MSVOA\_W\Data\VW112621\  
 Data File : VW020957.D  
 Acq On : 26 Nov 2021 15:03  
 Operator : SY/VA  
 Sample : M4833-07  
 Misc : 6.36g/10.0mL/MSVOA\_W/SOIL  
 ALS Vial : 12 Sample Multiplier: 1

Instrument :  
 MSVOA\_W  
 Client Sampled :  
 ESQM7

Quant Time: Nov 27 00:58:21 2021  
 Quant Method : Z:\voasrv\HPCHEM1\MSVOA\_W\Method\SFAMWLM111521SMA.M  
 Quant Title : SFAM01.0  
 QLast Update : Sat Nov 27 00:54:15 2021  
 Response via : Initial Calibration

Manual Integrations APPROVED

Reviewed By : Semsettin Yesilyurt 11/28/2021  
 Supervised By : Mahesh Dadoda 11/29/2021



TIC: VW020957.D\data.ms

(13) Acetone (T)

4.141min (+ 0.012) 5.43 ug/L

response 1785

Ion	Exp%	Act%
43.00	100.00	100.00
58.00	26.40	31.65
0.00	0.00	0.00
0.00	0.00	0.00

## Quantitation Report (QT/LSC Reviewed)

Data Path : Z:\voasrv\HPCHEM1\MSVOA\_W\Data\VW112621\  
 Data File : VW020957.D  
 Acq On : 26 Nov 2021 15:03  
 Operator : SY/VA  
 Sample : M4833-07  
 Misc : 6.36g/10.0mL/MSVOA\_W/SOIL  
 ALS Vial : 12 Sample Multiplier: 1

Instrument :  
 MSVOA\_W  
 Client Sampled :  
 ESQM7

Quant Time: Nov 27 00:58:21 2021  
 Quant Method : Z:\voasrv\HPCHEM1\MSVOA\_W\Method\SFAMWLM111521SMA.M  
 Quant Title : SFAM01.0  
 QLast Update : Sat Nov 27 00:54:15 2021  
 Response via : Initial Calibration

Manual Integrations APPROVED

Reviewed By : Semsettin Yesilyurt 11/28/2021  
 Supervised By : Mahesh Dadoda 11/29/2021

Compound	R.T.	QIon	Response	Conc	Units	Dev(Min)
Internal Standards						
1) 1,4-Difluorobenzene	8.841	114	127082	25.000	ug/L	# 0.00
28) Chlorobenzene-d5	11.633	117	103969	25.000	ug/L	0.00
58) 1,4-Dichlorobenzene-d4	13.554	152	41520	25.000	ug/L	0.00
System Monitoring Compounds						
4) Vinyl Chloride-d3	2.348	65	29746	20.179	ug/L	0.00
Spiked Amount 25.000	Range 30 - 150		Recovery =	80.720%		
7) Chloroethane-d5	2.885	69	21009	22.098	ug/L	0.00
Spiked Amount 25.000	Range 30 - 150		Recovery =	88.400%		
11) 1,1-Dichloroethene-d2	4.013	63	37096	13.007	ug/L	0.00
Spiked Amount 25.000	Range 45 - 110		Recovery =	52.040%		
21) 2-Butanone-d5	7.073	46	16964	46.106	ug/L	0.00
Spiked Amount 50.000	Range 20 - 135		Recovery =	92.220%		
24) Chloroform-d	7.652	84	69733	21.778	ug/L	0.00
Spiked Amount 25.000	Range 40 - 150		Recovery =	87.120%		
26) 1,2-Dichloroethane-d4	8.305	65	37281	22.938	ug/L	0.00
Spiked Amount 25.000	Range 70 - 130		Recovery =	91.760%		
32) Benzene-d6	8.274	84	130332	23.785	ug/L	0.00
Spiked Amount 25.000	Range 20 - 135		Recovery =	95.120%		
36) 1,2-Dichloropropane-d6	9.274	67	38749	24.833	ug/L	0.00
Spiked Amount 25.000	Range 70 - 120		Recovery =	99.320%		
41) Toluene-d8	10.323	98	120789	22.209	ug/L	0.00
Spiked Amount 25.000	Range 30 - 130		Recovery =	88.840%		
43) trans-1,3-Dichloroprop...	10.579	79	16544	22.431	ug/L	0.00
Spiked Amount 25.000	Range 30 - 135		Recovery =	89.720%		
47) 2-Hexanone-d5	10.920	63	13993	54.070	ug/L	0.00
Spiked Amount 50.000	Range 20 - 135		Recovery =	108.140%		
56) 1,1,2,2-Tetrachloroeth...	12.688	84	30247	25.304	ug/L	0.00
Spiked Amount 25.000	Range 45 - 120		Recovery =	101.200%		
66) 1,2-Dichlorobenzene-d4	13.852	152	36412	24.605	ug/L	0.00
Spiked Amount 25.000	Range 75 - 120		Recovery =	98.440%		
Target Compounds						
13) Acetone	4.141	43	1785m	5.434	ug/L	Qvalue

(#) = qualifier out of range (m) = manual integration (+) = signals summed