

Data Path : Z:\VOASRV\HPCHEM1\MSVOA_W\DATA\VW112718\
 Data File : VW007090.D
 Acq On : 27 Nov 2018 16:20
 Operator : VAY/AP
 Sample : J5996-14
 Misc : 6.42G/5ML/MSVOA_W/SOIL
 ALS Vial : 10 Sample Multiplier: 1

Instrument :
 MSVOA_W
 ClientSampleId :
 AOC1-05-B

Integration Parameters: RTEINT.P

Integrator: RTE
 Smoothing : ON
 Sampling : 1
 Start Thrs: 0.2
 Stop Thrs : 0

Filtering: 5
 Min Area: 3 % of largest Peak
 Max Peaks: 100
 Peak Location: TOP

If leading or trailing edge < 100 prefer < Baseline drop else tangent >
 Peak separation: 5

Method : Z:\VOASRV\HPCHEM1\MSVOA_W\METHOD\82W112118S.M
 Title : SW846 8260

Signal : TIC

peak #	R.T. min	first scan	max scan	last scan	PK TY	peak height	corr. area	corr. % max.	% of total
1	5.946	652	663	675	rBV4	7405	22732	1.09%	0.240%
2	7.141	850	859	873	rBV	11932	34568	1.65%	0.365%
3	7.884	971	981	986	rBV	61269	145202	6.94%	1.531%
4	7.951	986	992	1000	rVB	138556	304317	14.55%	3.209%
5	8.311	1036	1051	1061	rBV2	67309	166071	7.94%	1.751%
6	8.848	1131	1139	1146	rBV	181934	373734	17.87%	3.941%
7	10.323	1375	1381	1388	rBV	284909	513340	24.54%	5.414%
8	10.707	1440	1444	1449	rBV	22680	45880	2.19%	0.484%
9	11.067	1499	1503	1506	rBV3	18746	35390	1.69%	0.373%
10	11.634	1590	1596	1608	rVB	273286	472720	22.60%	4.985%
11	12.451	1721	1730	1733	rBV	108669	310170	14.83%	3.271%
12	12.621	1753	1758	1764	rVB	243667	400279	19.14%	4.221%
13	12.932	1790	1809	1831	rVB3	291107	2091467	100.00%	22.057%
14	13.359	1864	1879	1891	rBV3	307946	1494665	71.46%	15.763%
15	13.487	1891	1900	1908	rVV3	185749	756460	36.17%	7.978%
16	13.560	1908	1912	1926	rVB	293766	490753	23.46%	5.176%
17	13.780	1943	1948	1949	rBV5	14419	25024	1.20%	0.264%
18	13.902	1962	1968	1970	rBV3	19498	44172	2.11%	0.466%
19	13.987	1974	1982	1993	rVV3	84282	318791	15.24%	3.362%
20	14.085	1994	1998	2014	rVB3	28097	98281	4.70%	1.036%
21	14.328	2030	2038	2045	rBV3	35476	109499	5.24%	1.155%
22	14.566	2071	2077	2091	rVB6	17178	57888	2.77%	0.610%
23	14.804	2108	2116	2121	rBV7	31198	85443	4.09%	0.901%
24	14.853	2121	2124	2130	rVB4	12344	24119	1.15%	0.254%
25	15.072	2156	2160	2163	rVV3	16474	30302	1.45%	0.320%
26	15.115	2163	2167	2174	rVV3	22874	59082	2.82%	0.623%
27	15.188	2174	2179	2185	rVB3	17183	36256	1.73%	0.382%
28	15.340	2199	2204	2212	rVB2	20542	35648	1.70%	0.376%
29	15.481	2223	2227	2229	rVV4	13628	24653	1.18%	0.260%
30	15.511	2230	2232	2245	rVV7	16308	45652	2.18%	0.481%
31	15.664	2249	2257	2263	rBV4	26438	72854	3.48%	0.768%
32	15.877	2288	2292	2297	rVB5	17798	32206	1.54%	0.340%
33	16.182	2334	2342	2347	rBV8	17010	47061	2.25%	0.496%
34	16.298	2356	2361	2368	rBV2	23978	46994	2.25%	0.496%

Data Path : Z:\VOASRV\HPCHEM1\MSVOA_W\DATA\VW112718\
Data File : VW007090.D
Acq On : 27 Nov 2018 16:20
Operator : VAY/AP
Sample : J5996-14
Misc : 6.42G/5ML/MSVOA_W/SOIL
ALS Vial : 10 Sample Multiplier: 1

Instrument :
MSVOA_W
ClientSampleId :
AOC1-05-B

Integration Parameters: RTEINT.P
Integrator: RTE
Smoothing : ON Filtering: 5
Sampling : 1 Min Area: 3 % of largest Peak
Start Thrs: 0.2 Max Peaks: 100
Stop Thrs : 0 Peak Location: TOP

If leading or trailing edge < 100 prefer < Baseline drop else tangent >
Peak separation: 5

Method : Z:\VOASRV\HPCHEM1\MSVOA_W\METHOD\82W112118S.M
Title : SW846 8260

35	16.389	2370	2376	2380	rVV2	18967	43018	2.06%	0.454%
36	16.456	2380	2387	2399	rVB	159395	351193	16.79%	3.704%
37	16.657	2411	2420	2433	rVB	87528	236225	11.29%	2.491%

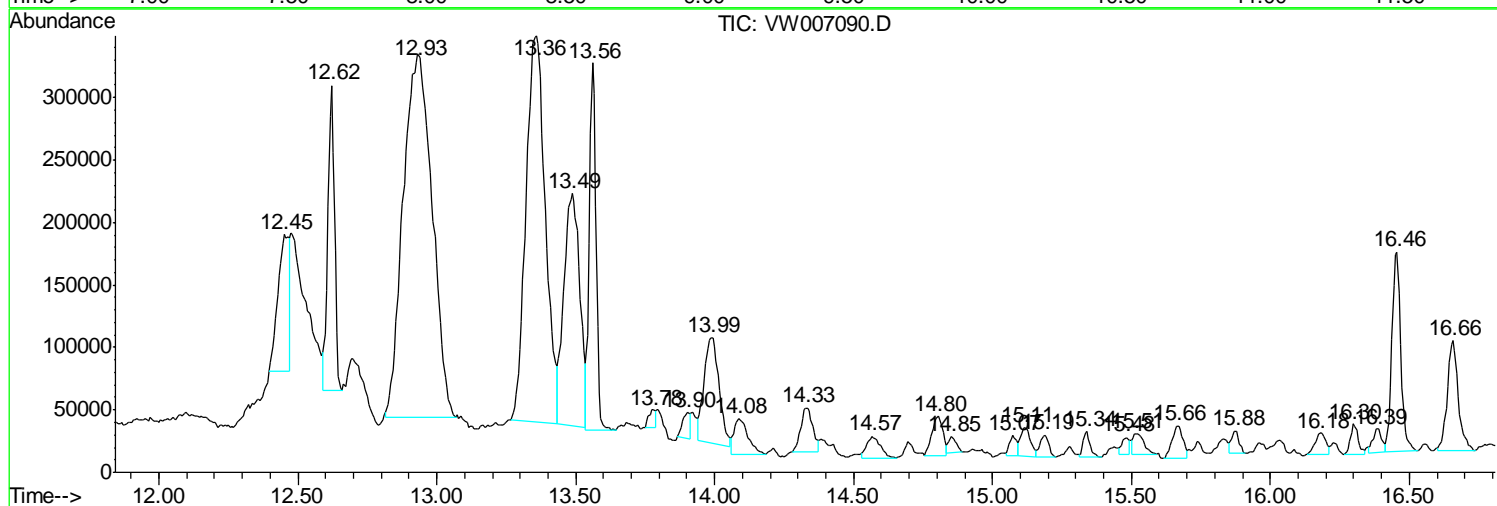
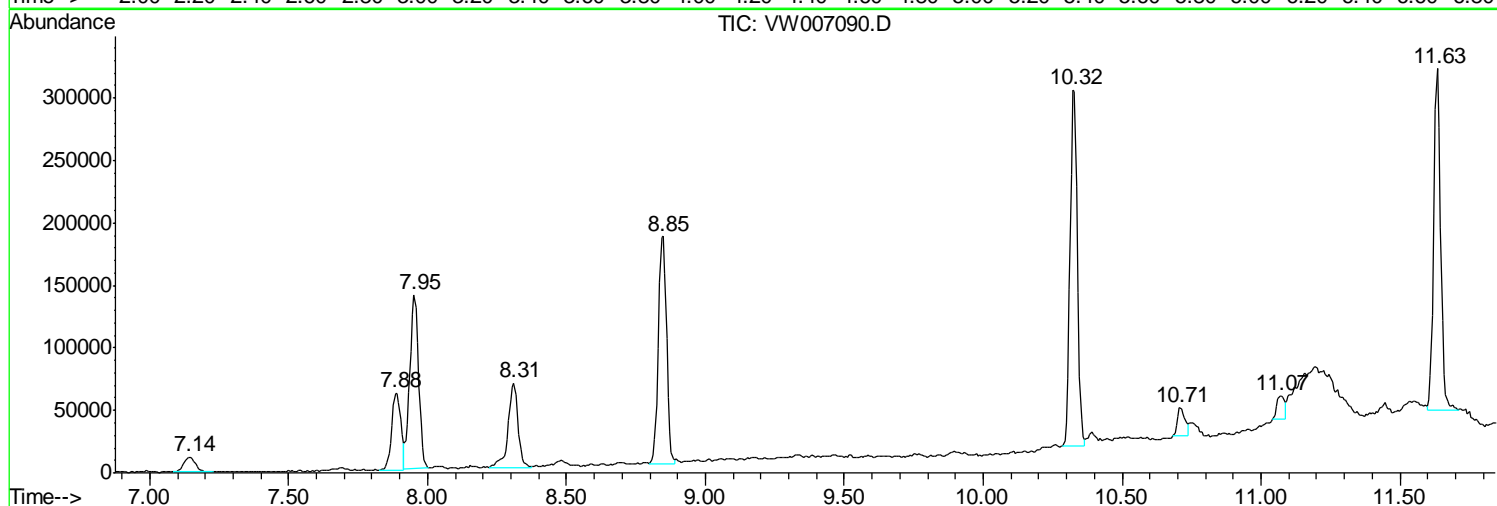
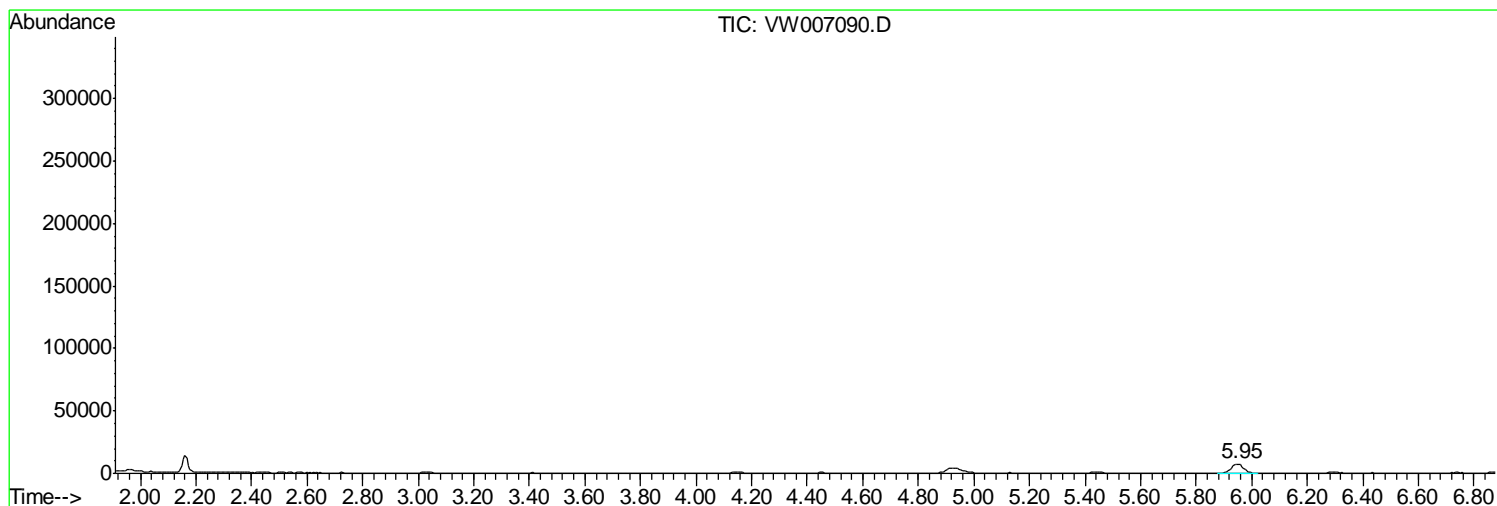
Sum of corrected areas: 9482109

Data Path : Z:\VOASRV\HPCHEM1\MSVOA_W\DATA\VW112718\
 Data File : VW007090.D
 Acq On : 27 Nov 2018 16:20
 Operator : VAY/AP
 Sample : J5996-14
 Misc : 6.42G/5ML/MSVOA_W/SOIL
 ALS Vial : 10 Sample Multiplier: 1

Instrument :
 MSVOA_W
ClientSampleId :
 AOC1-05-B

Quant Method : Z:\VOASRV\HPCHEM1\MSVOA_W\METHOD\82W112118S.M
 Quant Title : SW846 8260

TIC Library : C:\DATABASE\NIST11.L
 TIC Integration Parameters: LSCINT.P



Data Path : Z:\VOASRV\HPCHEM1\MSVOA_W\DATA\VW112718\
 Data File : VW007090.D
 Acq On : 27 Nov 2018 16:20
 Operator : VAY/AP
 Sample : J5996-14
 Misc : 6.42G/5ML/MSVOA_W/SOIL
 ALS Vial : 10 Sample Multiplier: 1

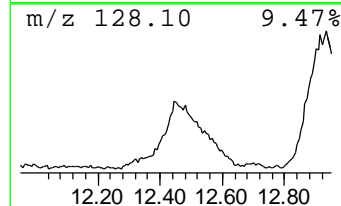
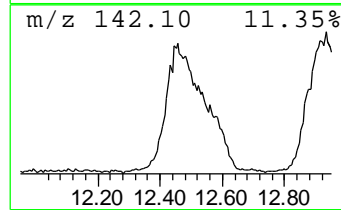
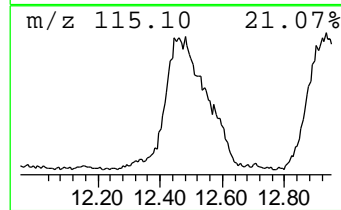
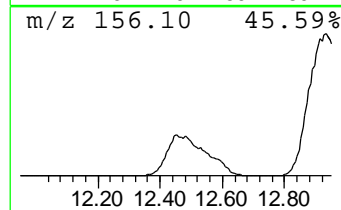
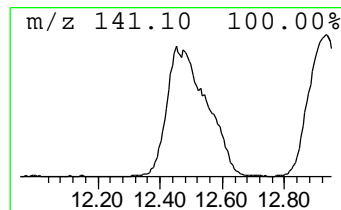
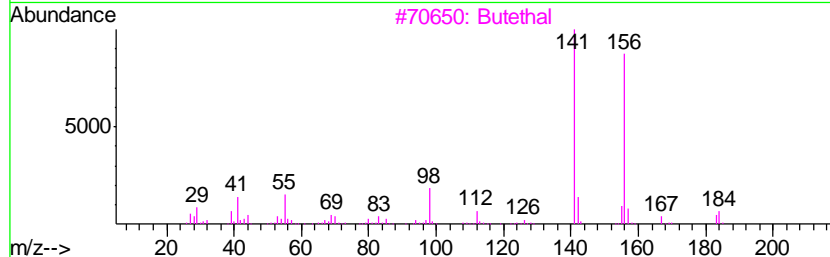
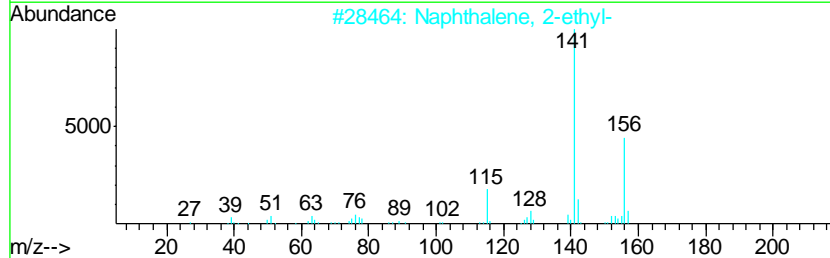
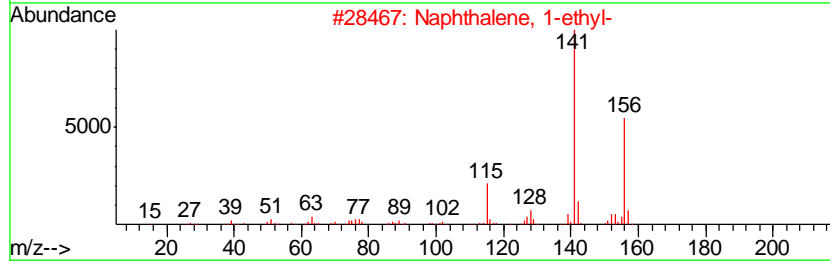
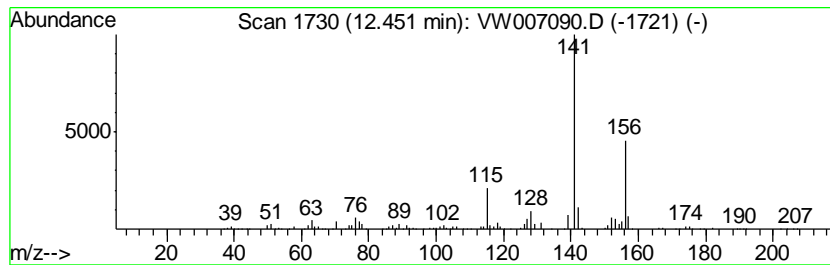
Instrument :
 MSVOA_W
 ClientSampled :
 AOC1-05-B

Quant Method : Z:\VOASRV\HPCHEM1\MSVOA_W\METHOD\82W112118S.M
 Quant Title : SW846 8260

TIC Library : C:\DATABASE\NIST11.L
 TIC Integration Parameters: LSCINT.P

 Peak Number 1 Naphthalene, 1-ethyl- Concentration Rank 5

R.T.	EstConc	Area	Relative to ISTD	R.T.		
12.45	32.81 ug/l	310170	Chlorobenzene-d5	11.63		
Hit# of	5	Tentative ID	MW	MolForm	CAS#	Qual
1		Naphthalene, 1-ethyl-	156	C12H12	001127-76-0	97
2		Naphthalene, 2-ethyl-	156	C12H12	000939-27-5	97
3		Butethal	212	C10H16N2O3	000077-28-1	59
4		2-Thiophenecarboxylic acid, 5-et...	156	C7H8O2S	023229-72-3	59
5		5-Acetyl-2-amino-4-methylthiazole	156	C6H8N2OS	030748-47-1	53



Data Path : Z:\VOASRV\HPCHEM1\MSVOA_W\DATA\VW112718\
 Data File : VW007090.D
 Acq On : 27 Nov 2018 16:20
 Operator : VAY/AP
 Sample : J5996-14
 Misc : 6.42G/5ML/MSVOA_W/SOIL
 ALS Vial : 10 Sample Multiplier: 1

Instrument :
 MSVOA_W
 ClientSampled :
 AOC1-05-B

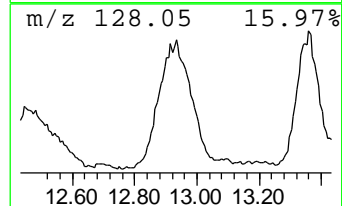
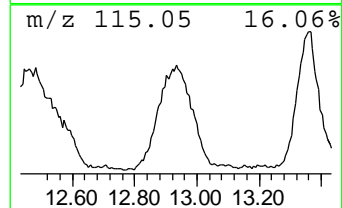
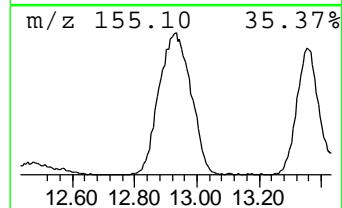
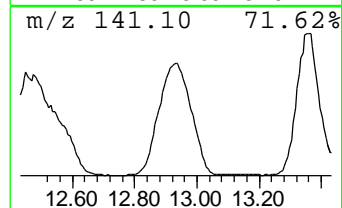
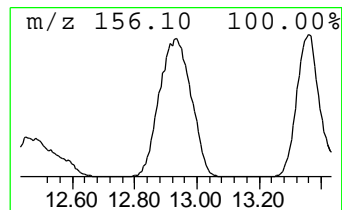
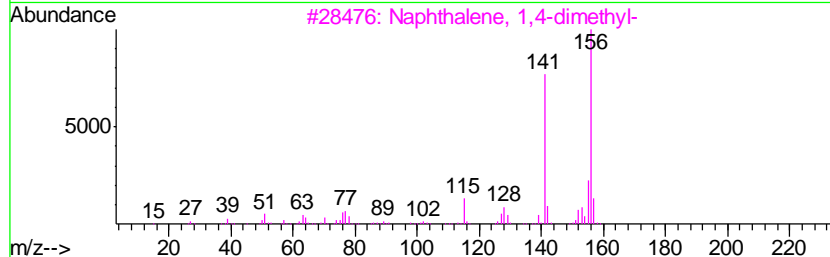
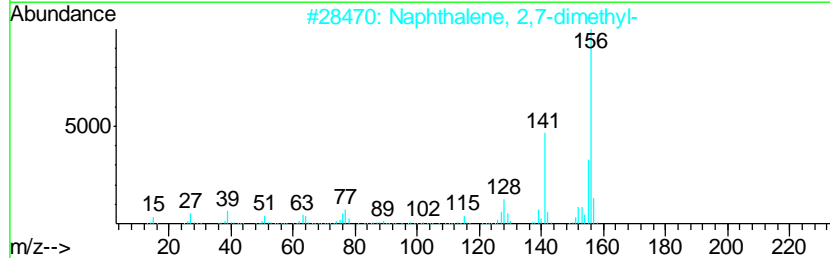
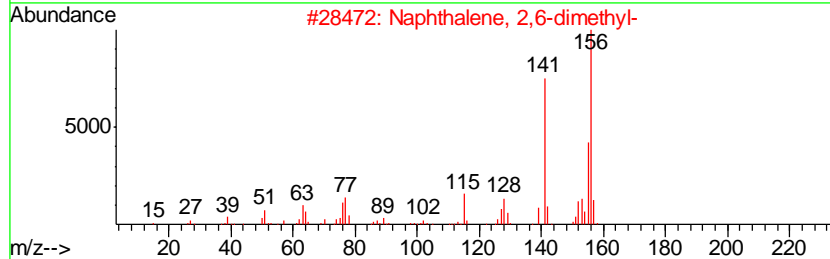
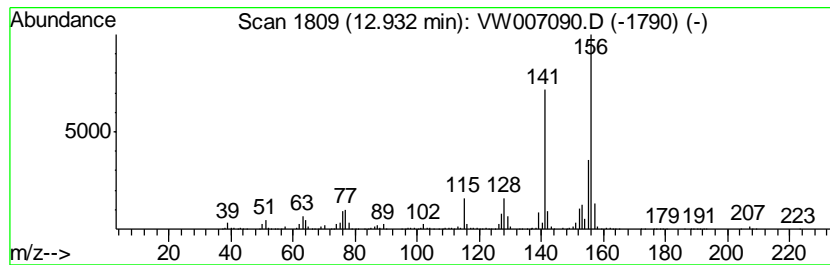
Quant Method : Z:\VOASRV\HPCHEM1\MSVOA_W\METHOD\82W112118S.M
 Quant Title : SW846 8260

TIC Library : C:\DATABASE\NIST11.L
 TIC Integration Parameters: LSCINT.P

 Peak Number 2 Naphthalene, 2,6-dimethyl- Concentration Rank 1

R.T.	EstConc	Area	Relative to ISTD	R.T.
12.93	213.09 ug/l	2091470	1,4-Dichlorobenzene-d4	13.56

Hit#	of	Tentative ID	MW	MolForm	CAS#	Qual
1	5	Naphthalene, 2,6-dimethyl-	156	C12H12	000581-42-0	97
2		Naphthalene, 2,7-dimethyl-	156	C12H12	000582-16-1	97
3		Naphthalene, 1,4-dimethyl-	156	C12H12	000571-58-4	97
4		Naphthalene, 1,5-dimethyl-	156	C12H12	000571-61-9	96
5		Naphthalene, 1,6-dimethyl-	156	C12H12	000575-43-9	96



Data Path : Z:\VOASRV\HPCHEM1\MSVOA_W\DATA\VW112718\
 Data File : VW007090.D
 Acq On : 27 Nov 2018 16:20
 Operator : VAY/AP
 Sample : J5996-14
 Misc : 6.42G/5ML/MSVOA_W/SOIL
 ALS Vial : 10 Sample Multiplier: 1

Instrument :
 MSVOA_W
 ClientSampleID :
 AOC1-05-B

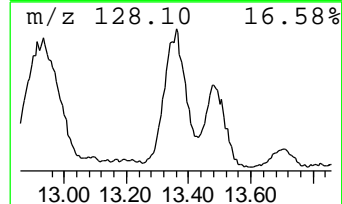
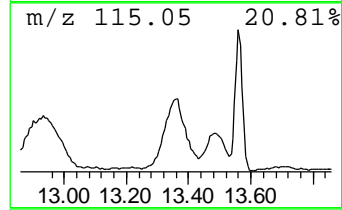
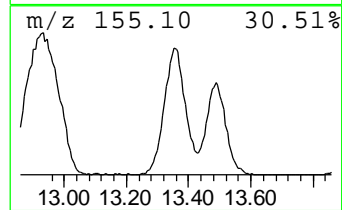
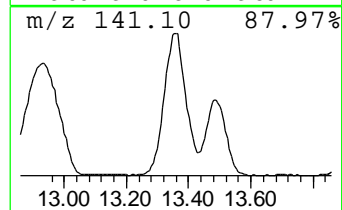
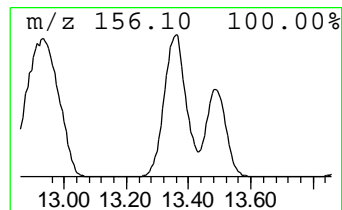
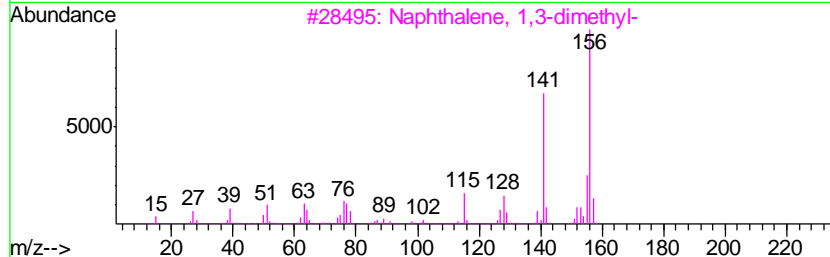
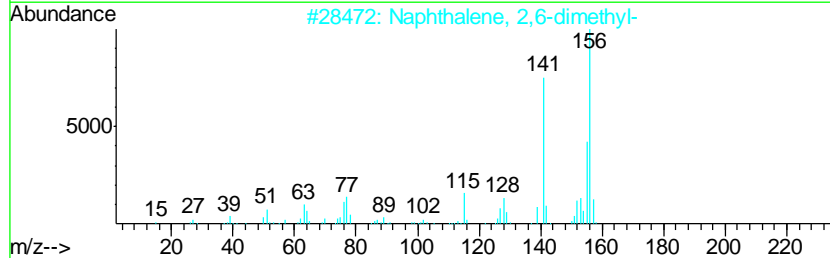
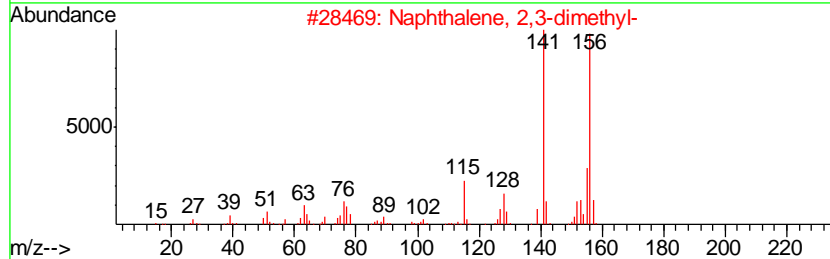
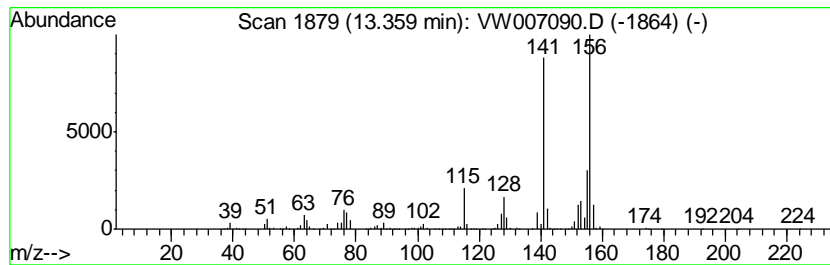
Quant Method : Z:\VOASRV\HPCHEM1\MSVOA_W\METHOD\82W112118S.M
 Quant Title : SW846 8260

TIC Library : C:\DATABASE\NIST11.L
 TIC Integration Parameters: LSCINT.P

 Peak Number 3 Naphthalene, 2,3-dimethyl- Concentration Rank 2

R.T.	EstConc	Area	Relative to ISTD	R.T.
13.36	152.28 ug/l	1494670	1,4-Dichlorobenzene-d4	13.56

Hit#	of	Tentative ID	MW	MolForm	CAS#	Qual
1	5	Naphthalene, 2,3-dimethyl-	156	C12H12	000581-40-8	98
2		Naphthalene, 2,6-dimethyl-	156	C12H12	000581-42-0	97
3		Naphthalene, 1,3-dimethyl-	156	C12H12	000575-41-7	97
4		Naphthalene, 1,7-dimethyl-	156	C12H12	000575-37-1	97
5		Naphthalene, 1,2-dimethyl-	156	C12H12	000573-98-8	96



Data Path : Z:\VOASRV\HPCHEM1\MSVOA_W\DATA\VW112718\
 Data File : VW007090.D
 Acq On : 27 Nov 2018 16:20
 Operator : VAY/AP
 Sample : J5996-14
 Misc : 6.42G/5ML/MSVOA_W/SOIL
 ALS Vial : 10 Sample Multiplier: 1

Instrument :
 MSVOA_W
 ClientSampled :
 AOC1-05-B

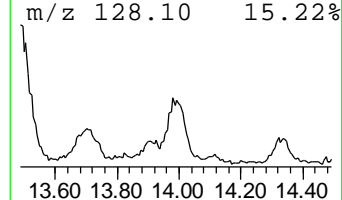
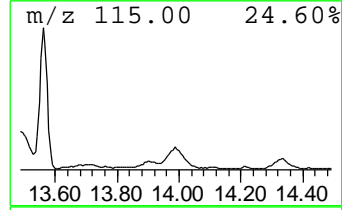
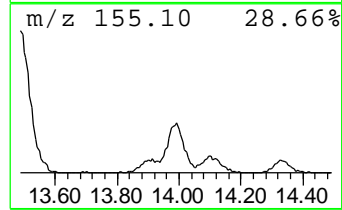
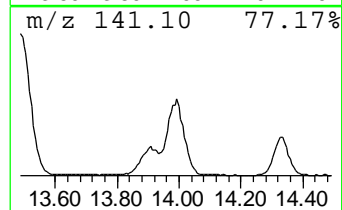
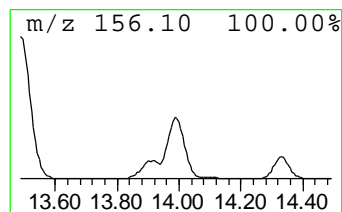
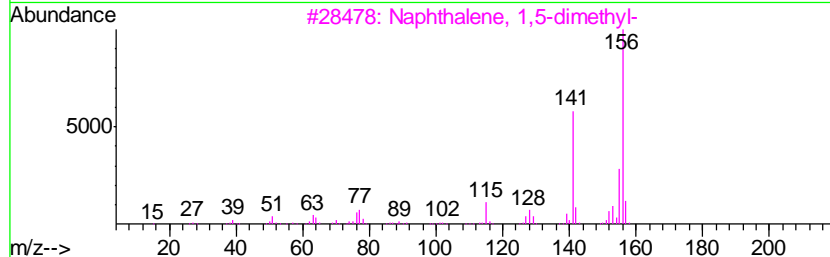
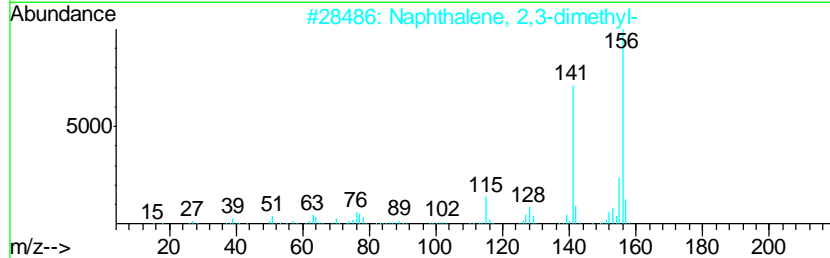
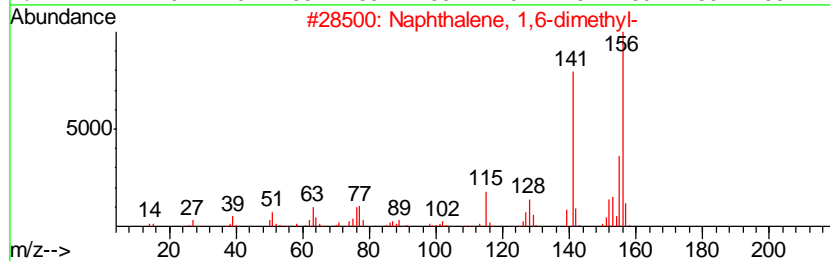
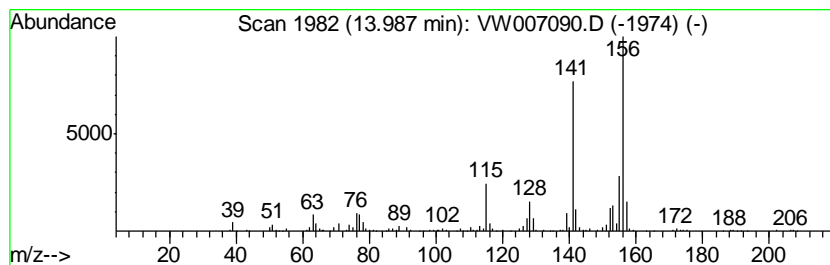
Quant Method : Z:\VOASRV\HPCHEM1\MSVOA_W\METHOD\82W112118S.M
 Quant Title : SW846 8260

TIC Library : C:\DATABASE\NIST11.L
 TIC Integration Parameters: LSCINT.P

 Peak Number 5 Naphthalene, 1,6-dimethyl- Concentration Rank 6

R.T.	EstConc	Area	Relative to ISTD	R.T.
13.99	32.48 ug/l	318791	1,4-Dichlorobenzene-d4	13.56

Hit#	of	Tentative ID	MW	MolForm	CAS#	Qual
1	5	Naphthalene, 1,6-dimethyl-	156	C12H12	000575-43-9	96
2		Naphthalene, 2,3-dimethyl-	156	C12H12	000581-40-8	96
3		Naphthalene, 1,5-dimethyl-	156	C12H12	000571-61-9	96
4		Naphthalene, 1,3-dimethyl-	156	C12H12	000575-41-7	96
5		Naphthalene, 1,2-dimethyl-	156	C12H12	000573-98-8	96



Data Path : Z:\VOASRV\HPCHEM1\MSVOA_W\DATA\VW112718\
 Data File : VW007090.D
 Acq On : 27 Nov 2018 16:20
 Operator : VAY/AP
 Sample : J5996-14
 Misc : 6.42G/5ML/MSVOA_W/SOIL
 ALS Vial : 10 Sample Multiplier: 1

Instrument :
 MSVOA_W
 ClientSampled :
 AOC1-05-B

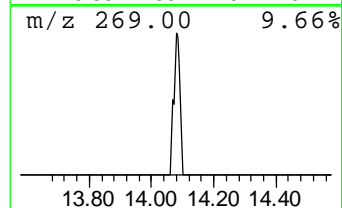
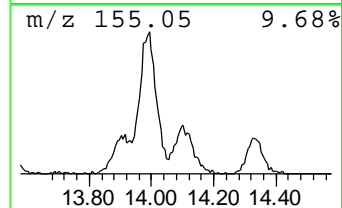
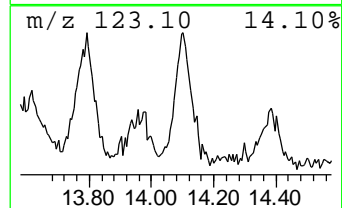
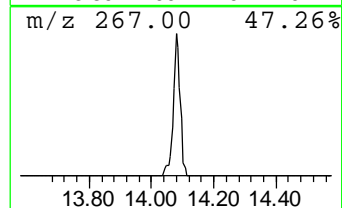
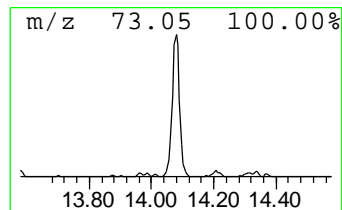
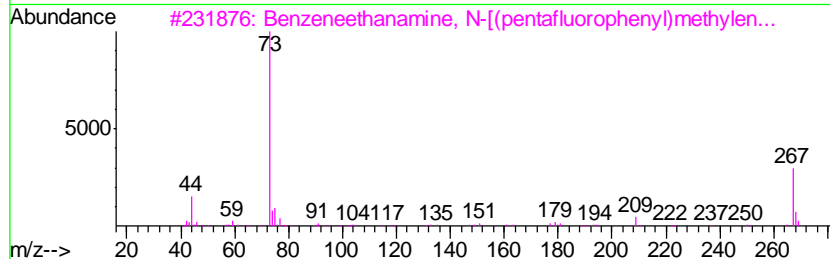
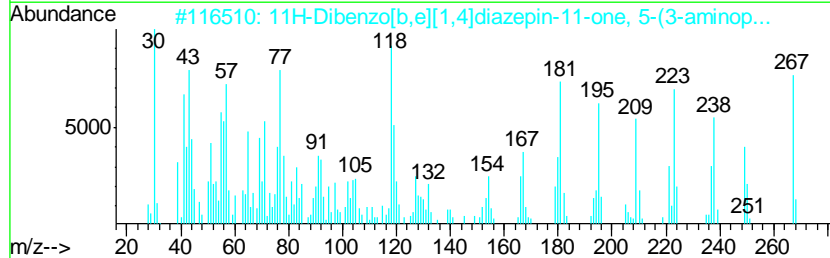
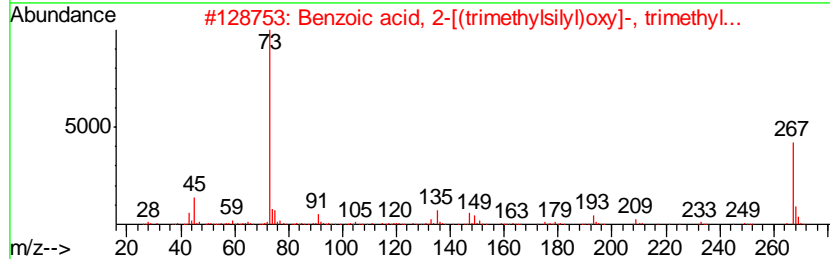
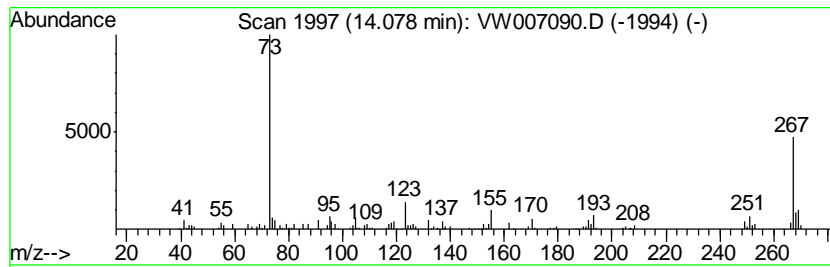
Quant Method : Z:\VOASRV\HPCHEM1\MSVOA_W\METHOD\82W112118S.M
 Quant Title : SW846 8260

TIC Library : C:\DATABASE\NIST11.L
 TIC Integration Parameters: LSCINT.P

 Peak Number 6 unknown14.08 Concentration Rank 9

R.T.	EstConc	Area	Relative to ISTD	R.T.
14.08	10.01 ug/l	98281	1,4-Dichlorobenzene-d4	13.56

Hit#	of	Tentative ID	MW	MolForm	CAS#	Qual
1	5	Benzoic acid, 2-[(trimethylsilyl)oxy]-, trimethyl...	282	C13H22O3Si2	003789-85-3	25
2		11H-Dibenzo[b,e][1,4]diazepin-11-one, 5-(3-aminopropyl)-	267	C16H17N3O	013450-73-2	25
3		Benzeneethanamine, N-[(pentafluorophenyl)methyl]-	475	C21H26F5NO2Si2	055429-85-1	16
4		Silane, (2-ethyl-1-methyl-1-butyl)dimethyl-	170	C10H22Si	041784-60-5	10
5		Spiro[2.4]hept-4-ene, 5-trimethylsilyloxy-	252	C14H28Si2	1000153-97-0	9



Data Path : Z:\VOASRV\HPCHEM1\MSVOA_W\DATA\VW112718\
 Data File : VW007090.D
 Acq On : 27 Nov 2018 16:20
 Operator : VAY/AP
 Sample : J5996-14
 Misc : 6.42G/5ML/MSVOA_W/SOIL
 ALS Vial : 10 Sample Multiplier: 1

Instrument :
 MSVOA_W
 ClientSampleID :
 AOC1-05-B

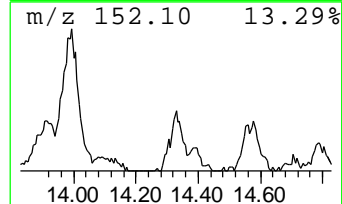
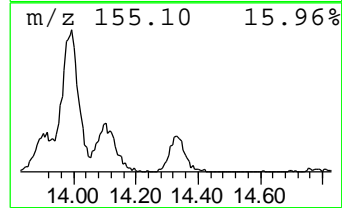
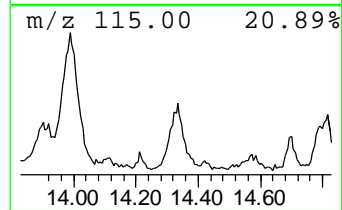
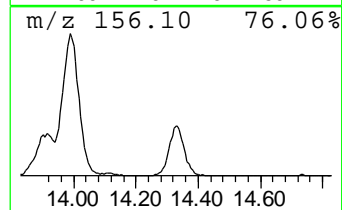
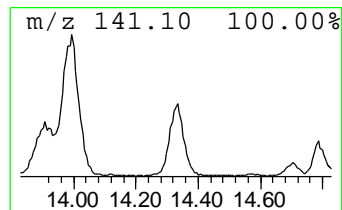
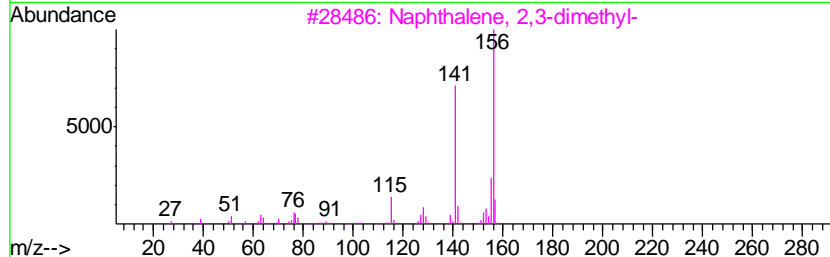
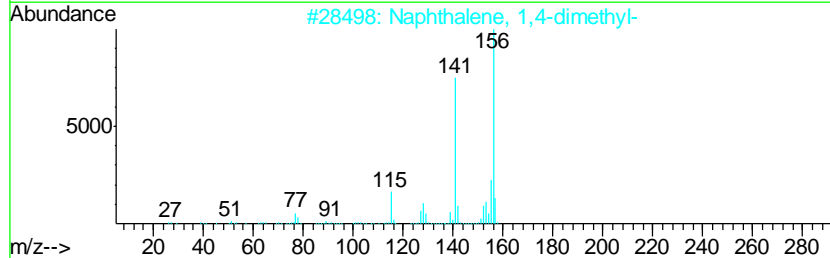
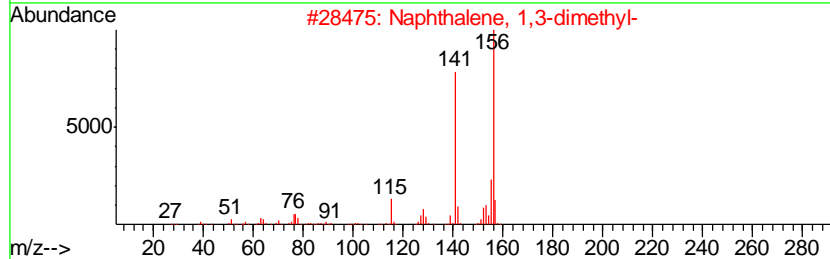
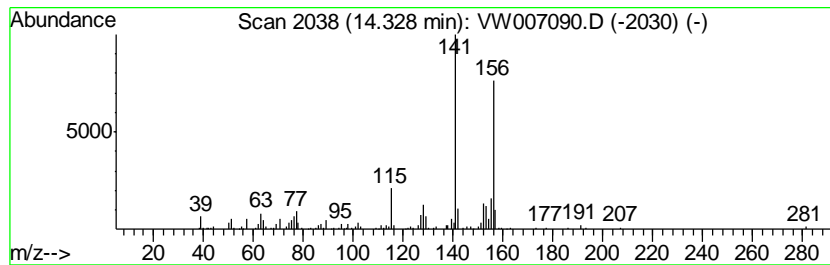
Quant Method : Z:\VOASRV\HPCHEM1\MSVOA_W\METHOD\82W112118S.M
 Quant Title : SW846 8260

TIC Library : C:\DATABASE\NIST11.L
 TIC Integration Parameters: LSCINT.P

 Peak Number 7 Naphthalene, 1,3-dimethyl- Concentration Rank 8

R.T.	EstConc	Area	Relative to ISTD	R.T.
14.33	11.16 ug/l	109499	1,4-Dichlorobenzene-d4	13.56

Hit#	of	Tentative ID	MW	MolForm	CAS#	Qual
1	5	Naphthalene, 1,3-dimethyl-	156	C12H12	000575-41-7	96
2		Naphthalene, 1,4-dimethyl-	156	C12H12	000571-58-4	96
3		Naphthalene, 2,3-dimethyl-	156	C12H12	000581-40-8	95
4		Naphthalene, 1,8-dimethyl-	156	C12H12	000569-41-5	94
5		Naphthalene, 1,2-dimethyl-	156	C12H12	000573-98-8	94



Data Path : Z:\VOASRV\HPCHEM1\MSVOA_W\DATA\VW112718\
 Data File : VW007090.D
 Acq On : 27 Nov 2018 16:20
 Operator : VAY/AP
 Sample : J5996-14
 Misc : 6.42G/5ML/MSVOA_W/SOIL
 ALS Vial : 10 Sample Multiplier: 1

Instrument :
 MSVOA_W
 ClientSampleID :
 AOC1-05-B

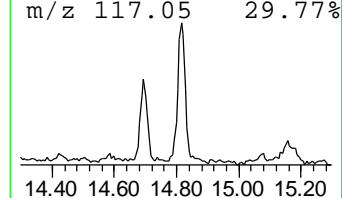
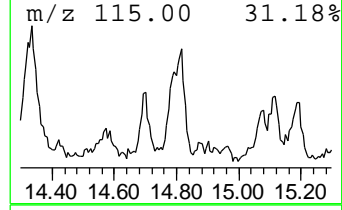
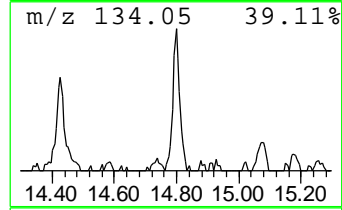
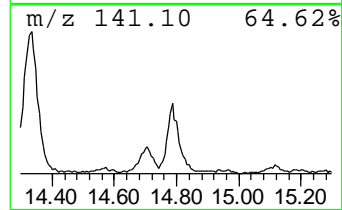
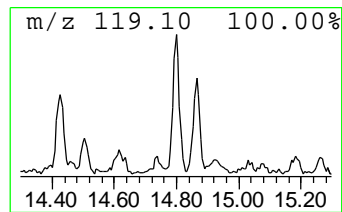
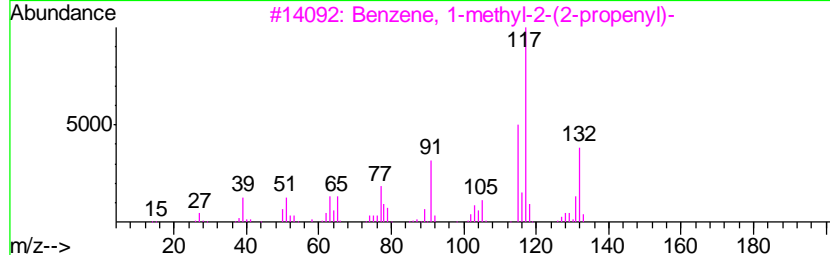
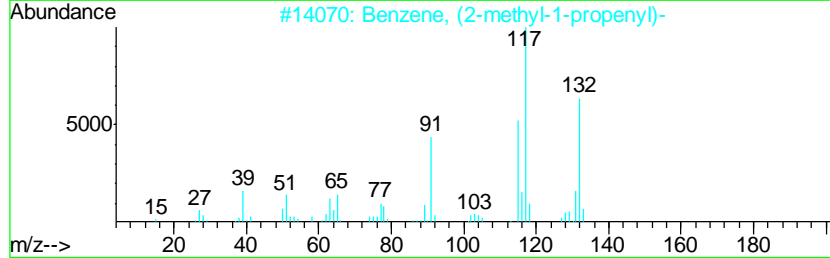
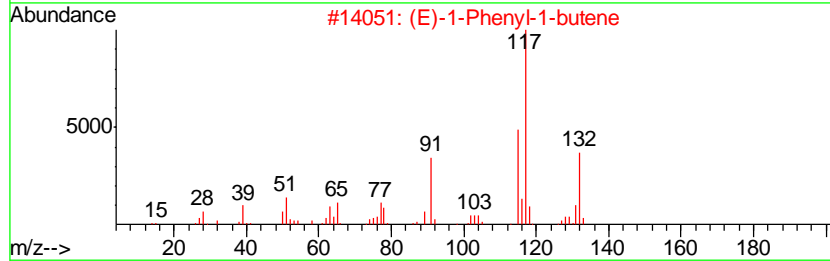
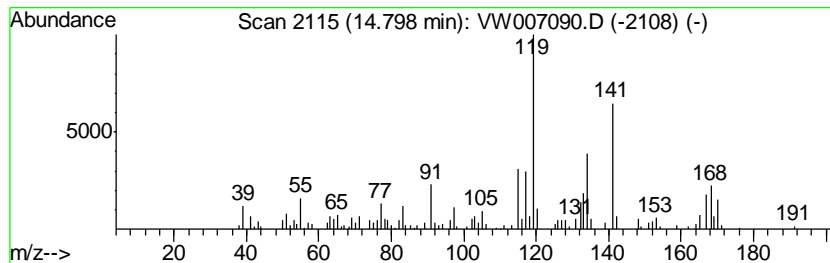
Quant Method : Z:\VOASRV\HPCHEM1\MSVOA_W\METHOD\82W112118S.M
 Quant Title : SW846 8260

TIC Library : C:\DATABASE\NIST11.L
 TIC Integration Parameters: LSCINT.P

 Peak Number 8 (E)-1-Phenyl-1-butene Concentration Rank 10

R.T.	EstConc	Area	Relative to ISTD	R.T.
14.80	8.71 ug/l	85443	1,4-Dichlorobenzene-d4	13.56

Hit#	of	Tentative ID	MW	MolForm	CAS#	Qual
1	5	(E)-1-Phenyl-1-butene	132	C10H12	001005-64-7	68
2		Benzene, (2-methyl-1-propenyl)-	132	C10H12	000768-49-0	64
3		Benzene, 1-methyl-2-(2-propenyl)-	132	C10H12	001587-04-8	47
4		Benzene, 2-butenyl-	132	C10H12	001560-06-1	40
5		Benzene, 1-methyl-4-(2-propenyl)-	132	C10H12	003333-13-9	35



Data Path : Z:\VOASRV\HPCHEM1\MSVOA_W\DATA\VW112718\
 Data File : VW007090.D
 Acq On : 27 Nov 2018 16:20
 Operator : VAY/AP
 Sample : J5996-14
 Misc : 6.42G/5ML/MSVOA_W/SOIL
 ALS Vial : 10 Sample Multiplier: 1

Instrument :
 MSVOA_W
 ClientSampled :
 AOC1-05-B

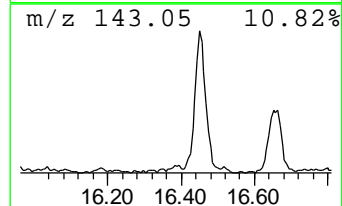
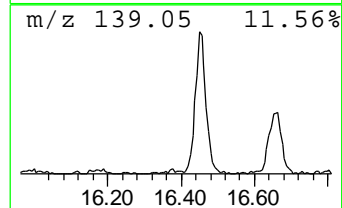
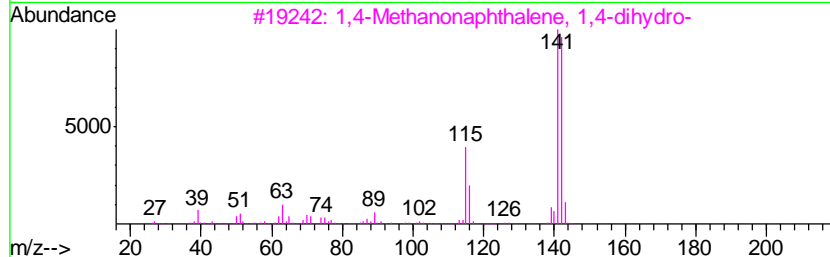
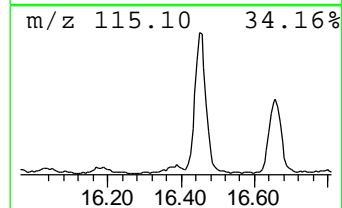
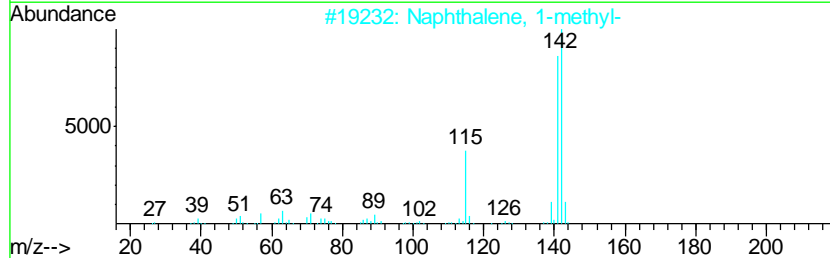
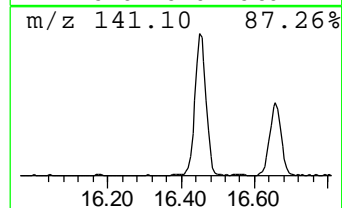
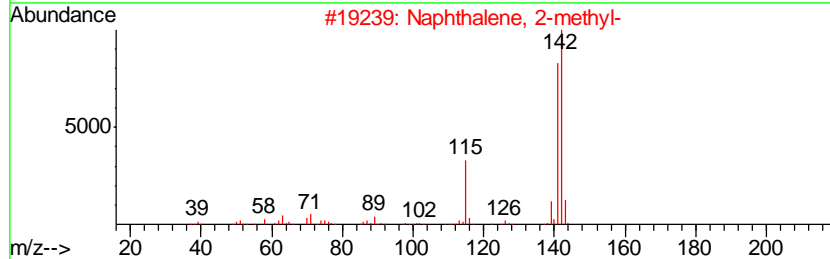
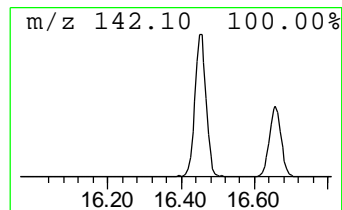
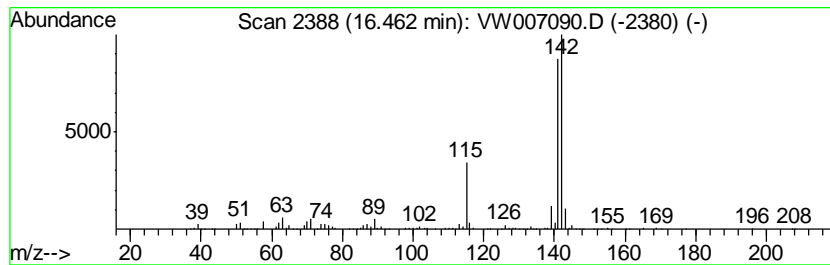
Quant Method : Z:\VOASRV\HPCHEM1\MSVOA_W\METHOD\82W112118S.M
 Quant Title : SW846 8260

TIC Library : C:\DATABASE\NIST11.L
 TIC Integration Parameters: LSCINT.P

 Peak Number 9 Naphthalene, 1-methyl- Concentration Rank 4

R.T.	EstConc	Area	Relative to ISTD	R.T.
16.46	35.78 ug/l	351193	1,4-Dichlorobenzene-d4	13.56

Hit#	of	Tentative ID	MW	MolForm	CAS#	Qual
1	5	Naphthalene, 2-methyl-	142	C11H10	000091-57-6	96
2		Naphthalene, 1-methyl-	142	C11H10	000090-12-0	96
3		1,4-Methanonaphthalene, 1,4-dihy...	142	C11H10	004453-90-1	91
4		Benzocycloheptatriene	142	C11H10	000264-09-5	91
5		1-Naphthaleneacetamide	185	C12H11NO	000086-86-2	64



Data Path : Z:\VOASRV\HPCHEM1\MSVOA_W\DATA\VW112718\
Data File : VW007090.D
Acq On : 27 Nov 2018 16:20
Operator : VAY/AP
Sample : J5996-14
Misc : 6.42G/5ML/MSVOA_W/SOIL
ALS Vial : 10 Sample Multiplier: 1

Instrument :
MSVOA_W
ClientSampleId :
AOC1-05-B

Quant Method : Z:\VOASRV\HPCHEM1\MSVOA_W\METHOD\82W112118S.M
Quant Title : SW846 8260

TIC Library : C:\DATABASE\NIST11.L
TIC Integration Parameters: LSCINT.P

TIC Top Hit name	RT	EstConc	Units	Response	--Internal Standard--			
					#	RT	Resp	Conc
Naphthalene, 1-et...	12.45	32.8	ug/l	310170	3	11.63	472720	50.0
Naphthalene, 2,6-...	12.93	213.1	ug/l	2091470	4	13.56	490753	50.0
Naphthalene, 2,3-...	13.36	152.3	ug/l	1494670	4	13.56	490753	50.0
Naphthalene, 1,6-...	13.99	32.5	ug/l	318791	4	13.56	490753	50.0
unknown14.08	14.08	10.0	ug/l	98281	4	13.56	490753	50.0
Naphthalene, 1,3-...	14.33	11.2	ug/l	109499	4	13.56	490753	50.0
(E)-1-Phenyl-1-bu...	14.80	8.7	ug/l	85443	4	13.56	490753	50.0
Naphthalene, 1-me...	16.46	35.8	ug/l	351193	4	13.56	490753	50.0