

Data Path : Z:\VOASRV\HPCHEM1\MSVOA W\DATA\VW112818\
 Data File : VW007110.D
 Acq On : 28 Nov 2018 13:51
 Operator : VAY/AP
 Sample : J6080-03
 Misc : 9.19G/5ML/MSVOA W/SOIL
 ALS Vial : 8 Sample Multiplier: 1

Instrument :
 MSVOA_W
 ClientSampleId :
 RCA-06

Quant Time: Nov 29 04:47:38 2018
 Quant Method : Z:\VOASRV\HPCHEM1\MSVOA_W\METHOD\82W112118S.M
 Quant Title : SW846 8260
 QLast Update : Wed Nov 21 03:23:02 2018
 Response via : Initial Calibration

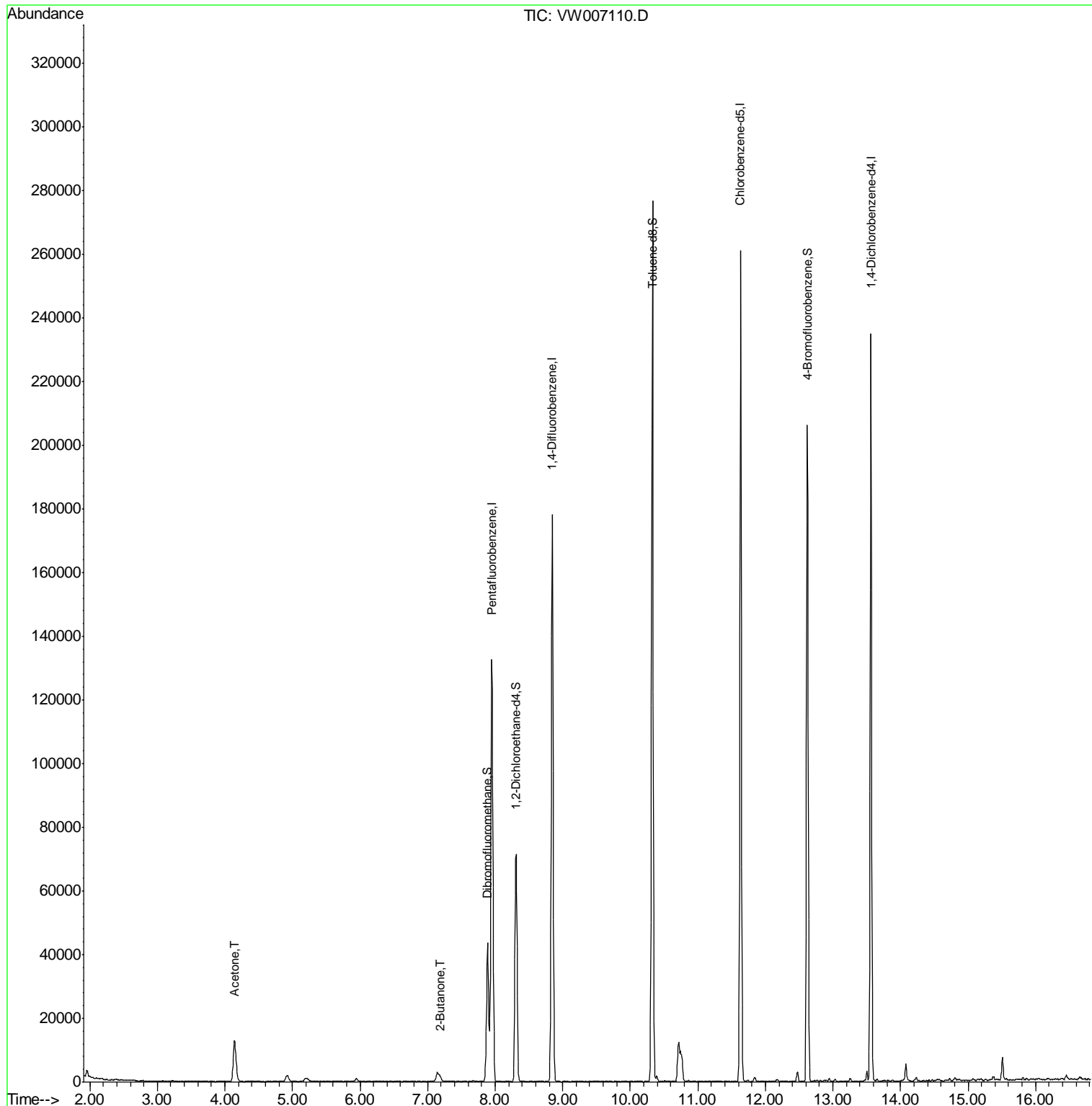
Internal Standards	R.T.	QIon	Response	Conc	Units	Dev(Min)
1) Pentafluorobenzene	7.95	168	99890	50.00	ug/l	0.00
34) 1,4-Difluorobenzene	8.85	114	158354	50.00	ug/l	0.00
63) Chlorobenzene-d5	11.63	117	146983	50.00	ug/l	0.00
72) 1,4-Dichlorobenzene-d4	13.56	152	61718	50.00	ug/l	0.00
System Monitoring Compounds						
33) 1,2-Dichloroethane-d4	8.31	65	58230	59.54	ug/l	0.00
Spiked Amount				50.000		
			Recovery	=	119.08%	
35) Dibromofluoromethane	7.88	113	31594	35.33	ug/l	0.00
Spiked Amount				50.000		
			Recovery	=	70.66%	
50) Toluene-d8	10.33	98	191351	48.46	ug/l	0.00
Spiked Amount				50.000		
			Recovery	=	96.92%	
62) 4-Bromofluorobenzene	12.62	95	70718	45.51	ug/l	0.00
Spiked Amount				50.000		
			Recovery	=	91.02%	
Target Compounds						
16) Acetone	4.14	43	24228	170.636	ug/l	99
25) 2-Butanone	7.19	43	2807	11.543	ug/l #	89

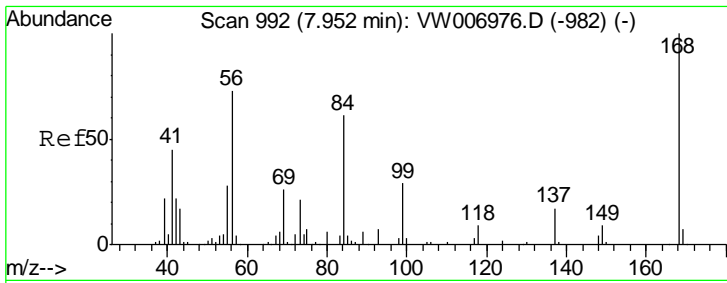
(#) = qualifier out of range (m) = manual integration (+) = signals summed

Data Path : Z:\VOASRV\HPCHEM1\MSVOA W\DATA\VW112818\
 Data File : VW007110.D
 Acq On : 28 Nov 2018 13:51
 Operator : VAY/AP
 Sample : J6080-03
 Misc : 9.19G/5ML/MSVOA W/SOIL
 ALS Vial : 8 Sample Multiplier: 1

Instrument :
 MSVOA_W
 ClientSampleId :
 RCA-06

Quant Time: Nov 29 04:47:38 2018
 Quant Method : Z:\VOASRV\HPCHEM1\MSVOA_W\METHOD\82W112118S.M
 Quant Title : SW846 8260
 QLast Update : Wed Nov 21 03:23:02 2018
 Response via : Initial Calibration

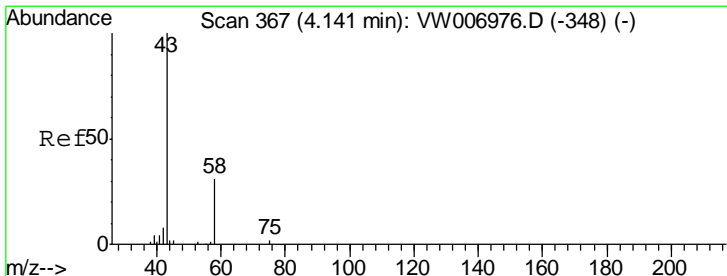
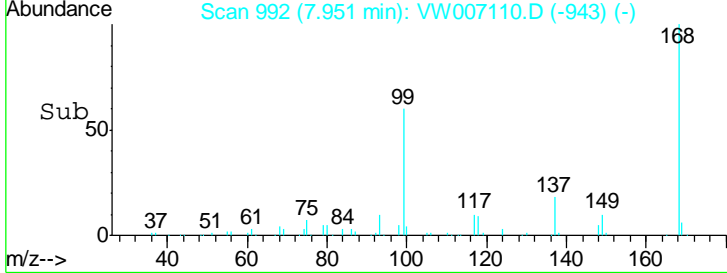
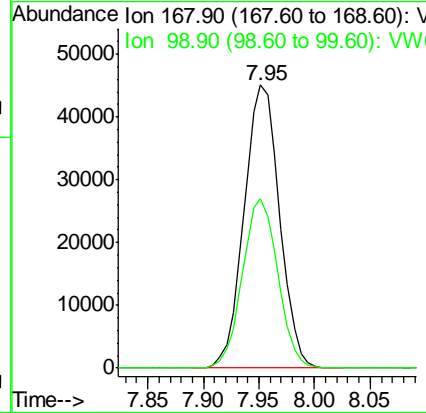
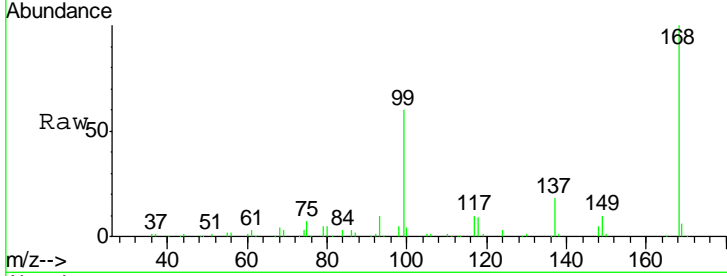




#1
 Pentafluorobenzene
 Concen: 50.000 ug/l
 RT: 7.95 min Scan# 992
 Delta R.T. -0.00 min
 Lab File: VW007110.D
 Acq: 28 Nov 2018 13:51

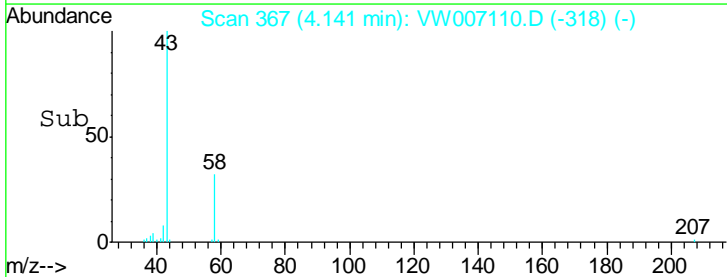
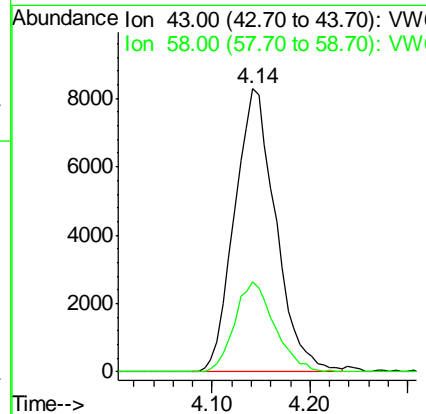
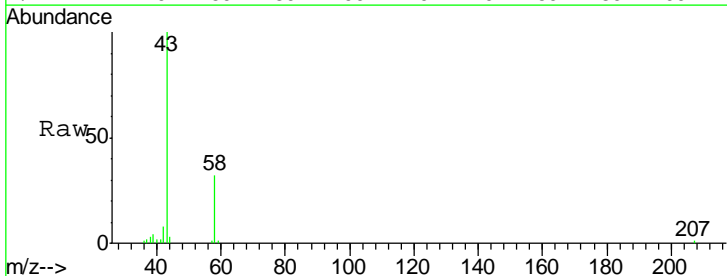
Instrument :
 MSVOA_W
 ClientSampled :
 RCA-06

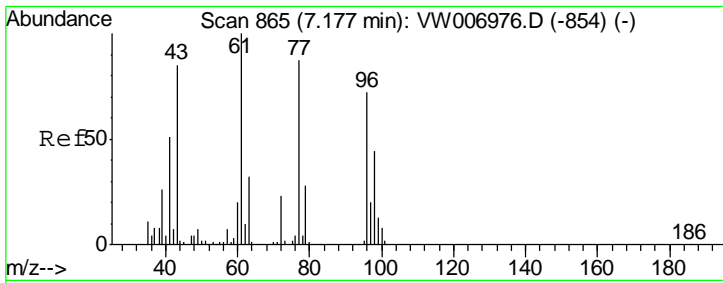
Tot Ion:168 Resp: 99890
 Ion Ratio Lower Upper
 168 100
 99 59.9 48.2 72.4



#16
 Acetone
 Concen: 170.636 ug/l
 RT: 4.14 min Scan# 367
 Delta R.T. -0.00 min
 Lab File: VW007110.D
 Acq: 28 Nov 2018 13:51

Tgt Ion: 43 Resp: 24228
 Ion Ratio Lower Upper
 43 100
 58 31.8 24.8 37.2

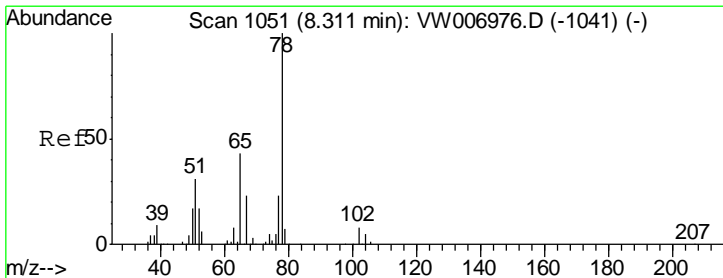
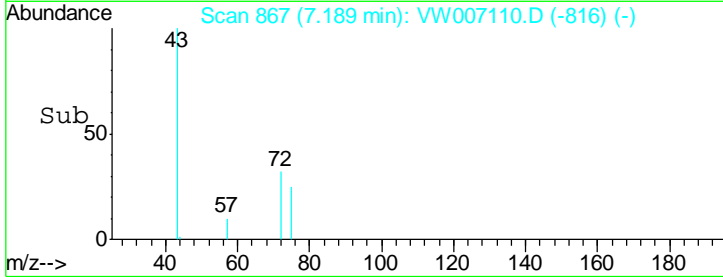
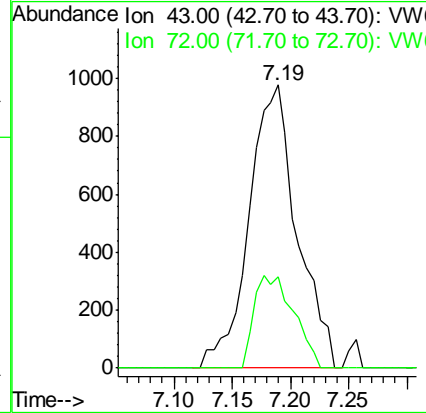
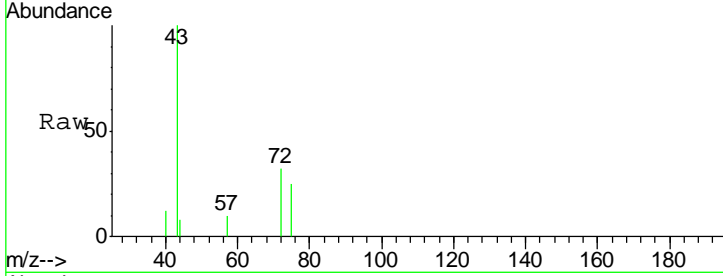




#25
 2-Butanone
 Concen: 11.543 ug/l
 RT: 7.19 min Scan# 867
 Delta R.T. 0.01 min
 Lab File: VW007110.D
 Acq: 28 Nov 2018 13:51

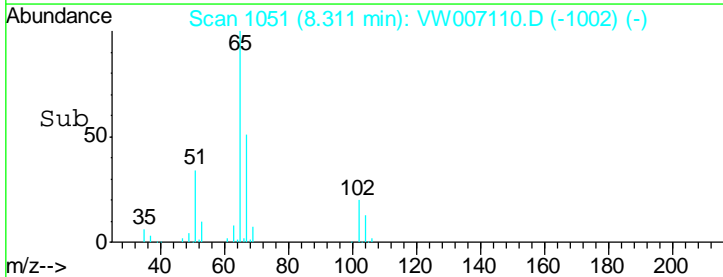
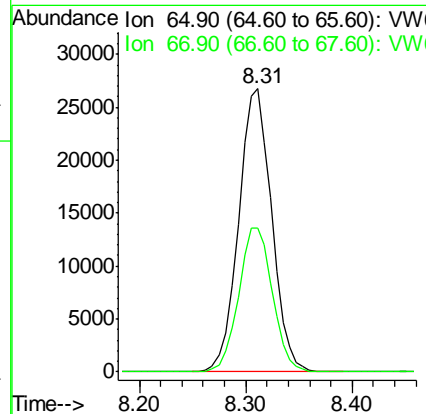
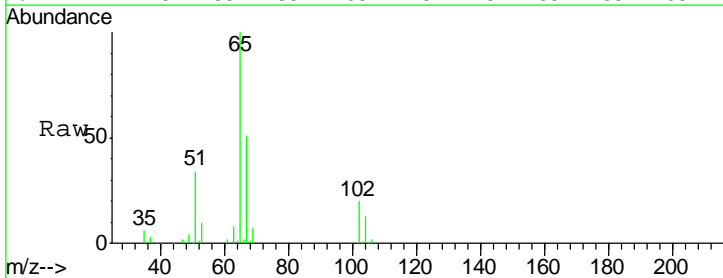
Instrument :
 MSVOA_W
 ClientSampled :
 RCA-06

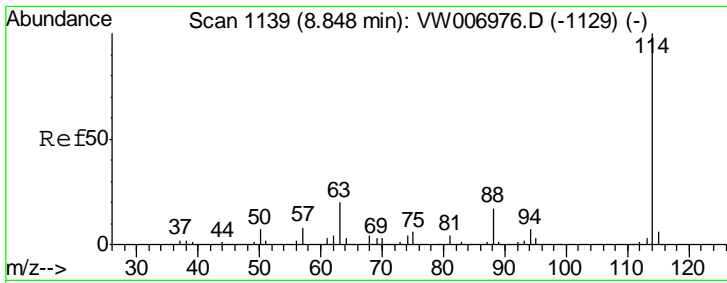
Tgt Ion: 43 Resp: 2807
 Ion Ratio Lower Upper
 43 100
 72 32.4 21.3 31.9#



#33
 1,2-Dichloroethane-d4
 Concen: 59.543 ug/l
 RT: 8.31 min Scan# 1051
 Delta R.T. -0.00 min
 Lab File: VW007110.D
 Acq: 28 Nov 2018 13:51

Tgt Ion: 65 Resp: 58230
 Ion Ratio Lower Upper
 65 100
 67 52.1 0.0 106.2

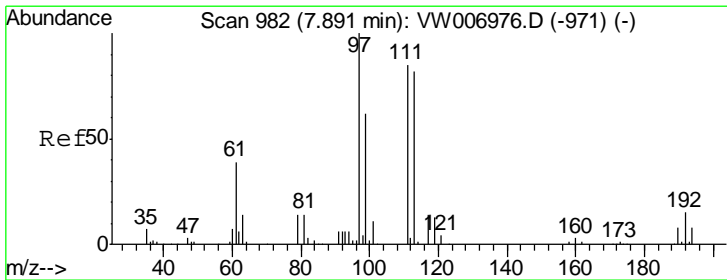
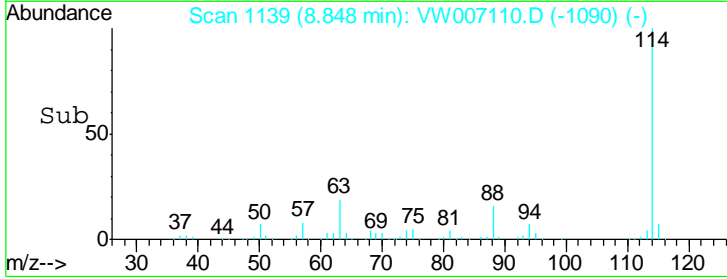
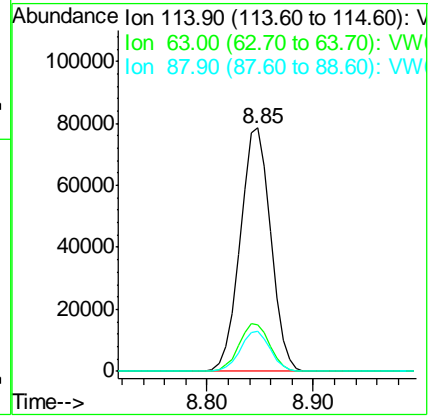
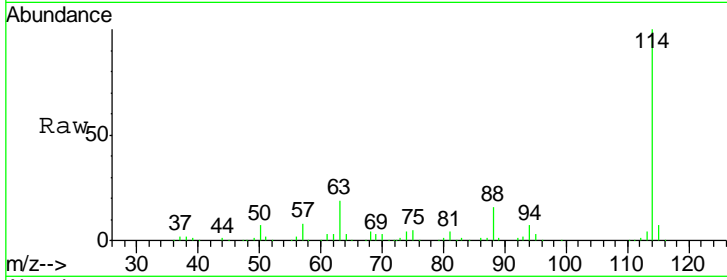




#34
 1,4-Difluorobenzene
 Concen: 50.000 ug/l
 RT: 8.85 min Scan# 1139
 Delta R.T. -0.00 min
 Lab File: VW007110.D
 Acq: 28 Nov 2018 13:51

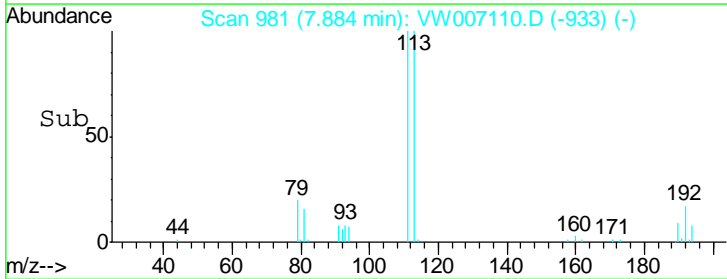
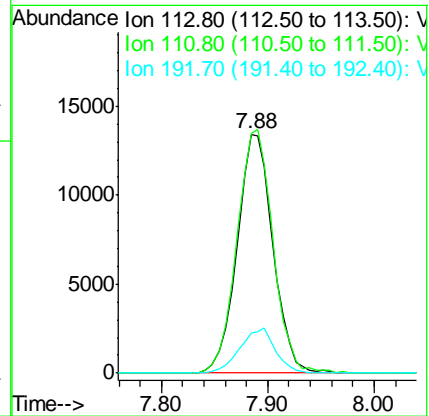
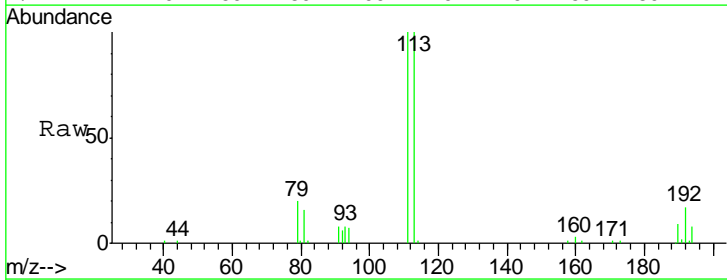
Instrument : MSVOA_W
 ClientSampled : RCA-06

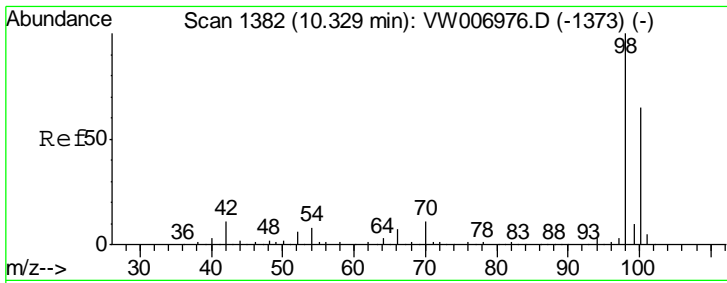
Tgt Ion	Resp	Lower	Upper
114	158354		
63	19.1	0.0	39.4
88	16.3	0.0	34.2



#35
 Dibromofluoromethane
 Concen: 35.330 ug/l
 RT: 7.88 min Scan# 981
 Delta R.T. -0.01 min
 Lab File: VW007110.D
 Acq: 28 Nov 2018 13:51

Tgt Ion	Resp	Lower	Upper
113	31594		
111	102.8	81.0	121.6
192	18.5	15.0	22.6

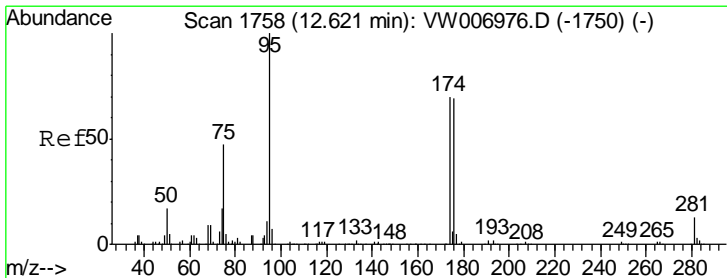
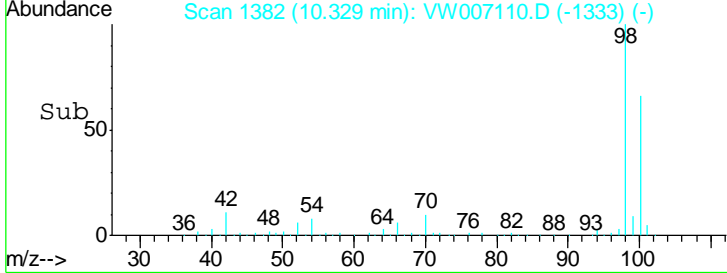
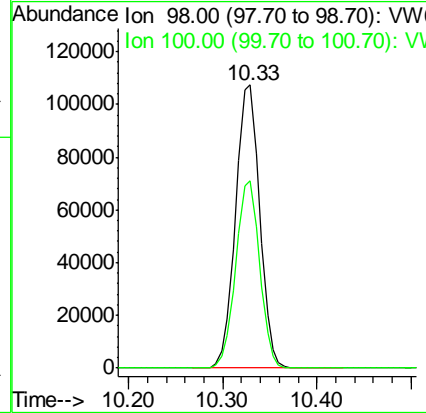
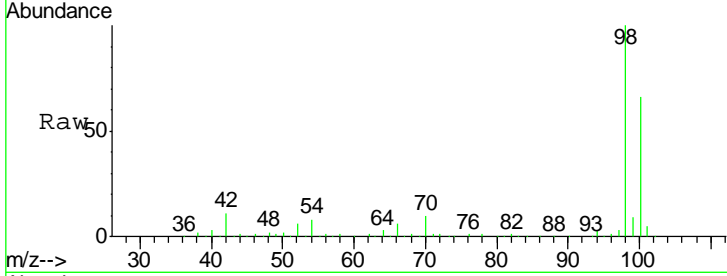




#50
 Toluene-d8
 Concen: 48.456 ug/l
 RT: 10.33 min Scan# 1382
 Delta R.T. -0.00 min
 Lab File: VW007110.D
 Acq: 28 Nov 2018 13:51

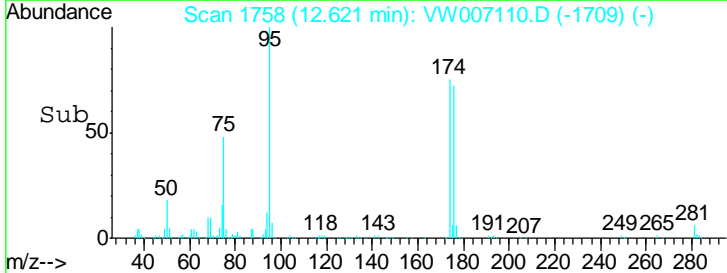
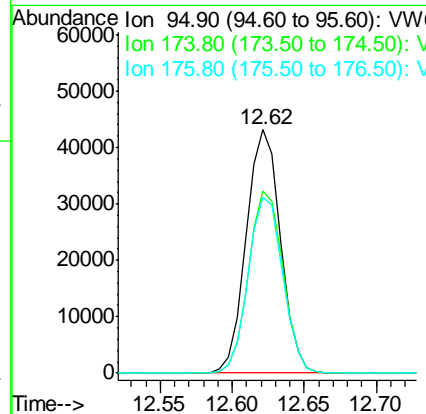
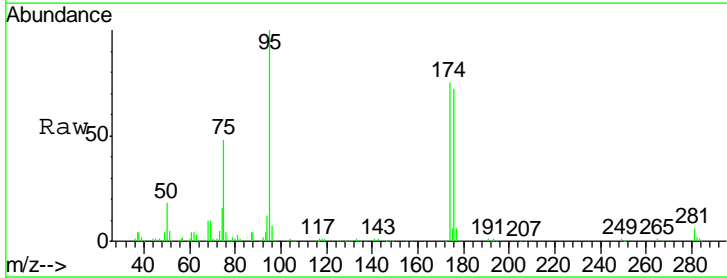
Instrument :
 MSVOA_W
 ClientSampled :
 RCA-06

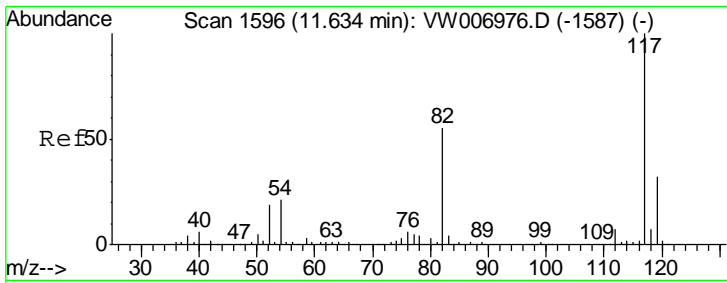
Tgt Ion: 98 Resp: 191351
 Ion Ratio Lower Upper
 98 100
 100 65.3 52.2 78.2



#62
 4-Bromofluorobenzene
 Concen: 45.508 ug/l
 RT: 12.62 min Scan# 1758
 Delta R.T. -0.00 min
 Lab File: VW007110.D
 Acq: 28 Nov 2018 13:51

Tgt Ion: 95 Resp: 70718
 Ion Ratio Lower Upper
 95 100
 174 75.2 0.0 143.6
 176 72.8 0.0 140.4

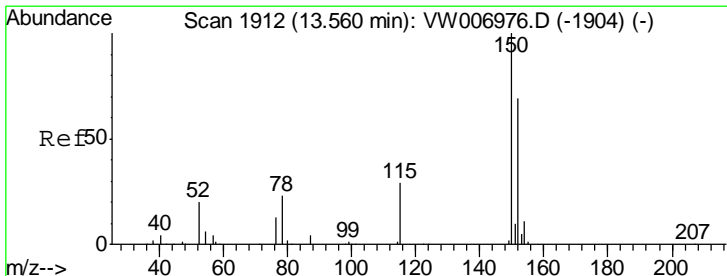
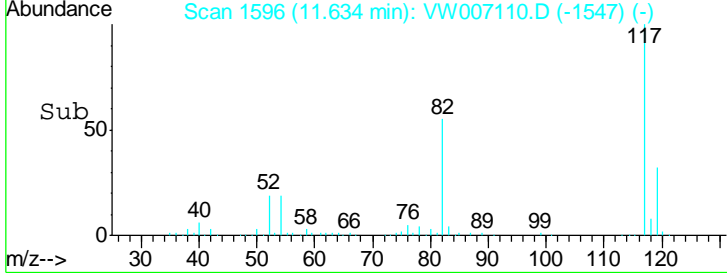
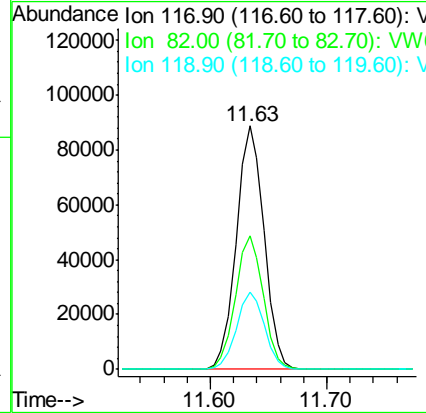
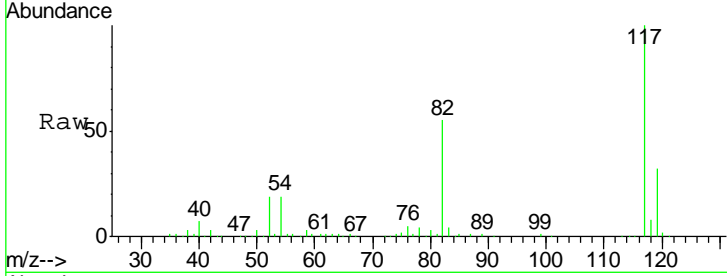




#63
 Chlorobenzene-d5
 Concen: 50.000 ug/l
 RT: 11.63 min Scan# 1596
 Delta R.T. -0.00 min
 Lab File: VW007110.D
 Acq: 28 Nov 2018 13:51

Instrument :
 MSVOA_W
 ClientSampled :
 RCA-06

Tgt Ion	Resp	Lower	Upper
117	146983		
82	54.8	44.2	66.2
119	31.7	25.9	38.9



#72
 1,4-Dichlorobenzene-d4
 Concen: 50.000 ug/l
 RT: 13.56 min Scan# 1912
 Delta R.T. -0.00 min
 Lab File: VW007110.D
 Acq: 28 Nov 2018 13:51

Tgt Ion	Resp	Lower	Upper
152	61718		
152	100		
115	62.7	31.4	94.2
150	158.9	0.0	353.4

