

Data Path : Z:\VOASRV\HPCHEM1\MSVOA W\DATA\VW120219\  
 Data File : VW014205.D  
 Acq On : 02 Dec 2019 15:54  
 Operator : SY/VA  
 Sample : K6089-21  
 Misc : 4.99G/10ML/MSVOA W/SOIL  
 ALS Vial : 1 Sample Multiplier: 1

Instrument :  
 MSVOA\_W  
 ClientSampleId :

Quant Time: Dec 03 10:07:47 2019  
 Quant Method : Z:\VOASRV\HPCHEM1\MSVOA\_W\METHOD\SOM2WLM111119S.M  
 Quant Title : VOC Analysis  
 QLast Update : Tue Dec 03 10:03:32 2019  
 Response via : Initial Calibration

Internal Standards	R.T.	QIon	Response	Conc	Units	Dev(Min)
1) 1,4-Difluorobenzene	8.84	114	286873	25.00	ug/L	0.00
28) Chlorobenzene-d5	11.63	117	287461	25.00	ug/L	0.00
60) 1,4-Dichlorobenzene-d4	13.55	152	158604	25.00	ug/L	0.00

System Monitoring Compounds

4) Vinyl Chloride-d3	2.35	65	82804	18.09	ug/L	0.00
Spiked Amount	25.000	Range	30 - 150	Recovery	=	72.36%
7) Chloroethane-d5	2.88	69	72163	19.45	ug/L	0.00
Spiked Amount	25.000	Range	30 - 150	Recovery	=	77.80%
10) 1,1-Dichloroethene-d2	4.01	63	130493	13.89	ug/L	0.00
Spiked Amount	25.000	Range	45 - 110	Recovery	=	55.56%
20) 2-Butanone-d5	7.07	46	66102	49.71	ug/L	0.00
Spiked Amount	50.000	Range	20 - 135	Recovery	=	99.42%
24) Chloroform-d	7.65	84	206609	23.42	ug/L	0.00
Spiked Amount	25.000	Range	40 - 150	Recovery	=	93.68%
26) 1,2-Dichloroethane-d4	8.30	65	113952	25.70	ug/L	0.00
Spiked Amount	25.000	Range	70 - 130	Recovery	=	102.80%
29) Benzene-d6	8.27	84	417356	20.46	ug/L	0.00
Spiked Amount	25.000	Range	20 - 135	Recovery	=	81.84%
33) 1,2-Dichloropropane-d6	9.27	67	130450	21.83	ug/L	0.00
Spiked Amount	25.000	Range	70 - 120	Recovery	=	87.32%
37) Toluene-d8	10.32	98	378748	19.58	ug/L	0.00
Spiked Amount	25.000	Range	30 - 130	Recovery	=	78.32%
38) trans-1,3-Dichloropropene-	10.57	79	53305	20.83	ug/L	0.00
Spiked Amount	25.000	Range	30 - 135	Recovery	=	83.32%
39) 2-Hexanone-d5	10.92	63	55326	48.83	ug/L	0.00
Spiked Amount	50.000	Range	20 - 135	Recovery	=	97.66%
48) 1,1,2,2-Tetrachloroethane-	12.69	84	114423	25.36	ug/L	0.00
Spiked Amount	25.000	Range	45 - 120	Recovery	=	101.44%
61) 1,2-Dichlorobenzene-d4	13.85	152	147540	23.15	ug/L	0.00
Spiked Amount	25.000	Range	75 - 120	Recovery	=	92.60%

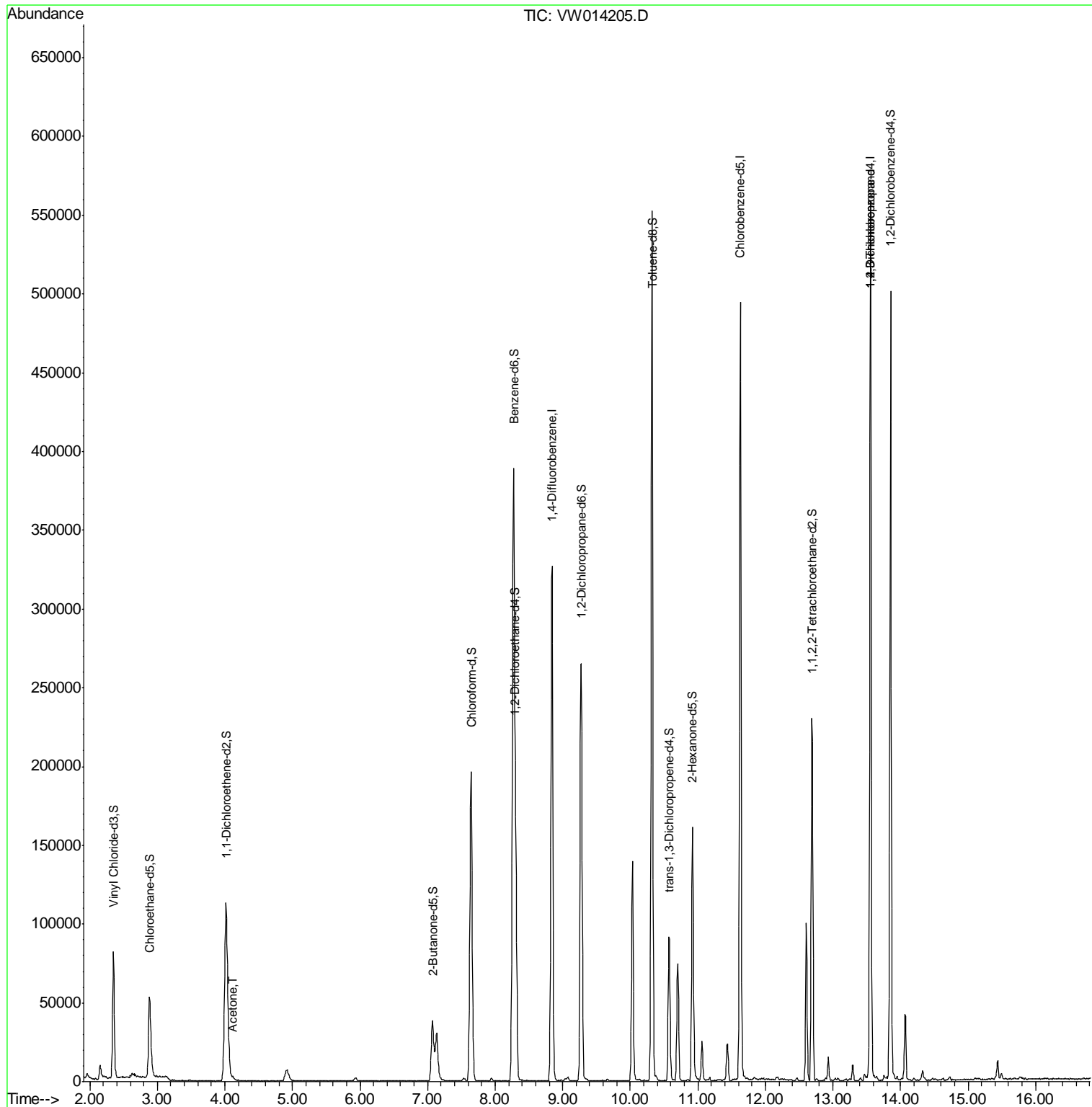
Target Compounds					Ovalue
13) Acetone	4.11	43	3829	2.830 ug/L	51
59) 1,2,3-Trichloropropane	13.55	75	16338	4.989 ug/L	90

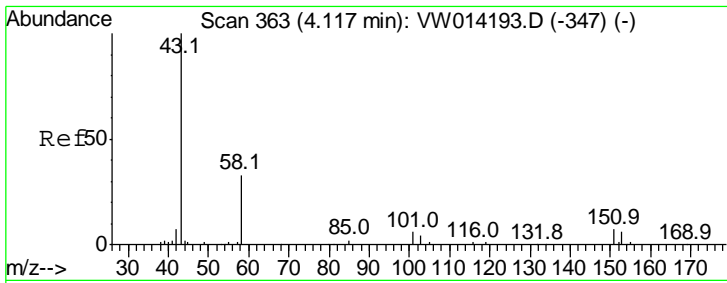
(#) = qualifier out of range (m) = manual integration (+) = signals summed

Data Path : Z:\VOASRV\HPCHEM1\MSVOA W\DATA\VW120219\  
 Data File : VW014205.D  
 Acq On : 02 Dec 2019 15:54  
 Operator : SY/VA  
 Sample : K6089-21  
 Misc : 4.99G/10ML/MSVOA W/SOIL  
 ALS Vial : 1 Sample Multiplier: 1

Instrument :  
 MSVOA\_W  
 ClientSampleID :

Quant Time: Dec 03 10:07:47 2019  
 Quant Method : Z:\VOASRV\HPCHEM1\MSVOA\_W\METHOD\SOM2WLM111119S.M  
 Quant Title : VOC Analysis  
 QLast Update : Tue Dec 03 10:03:32 2019  
 Response via : Initial Calibration

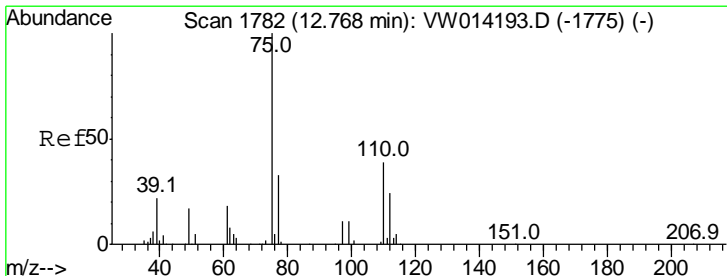
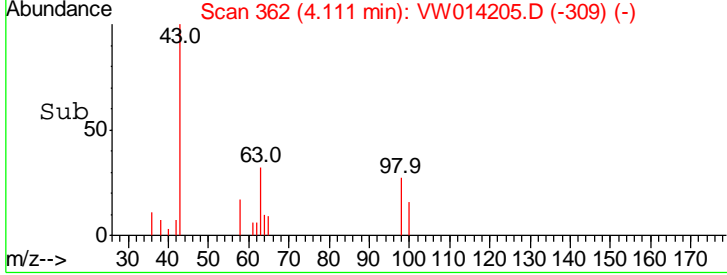
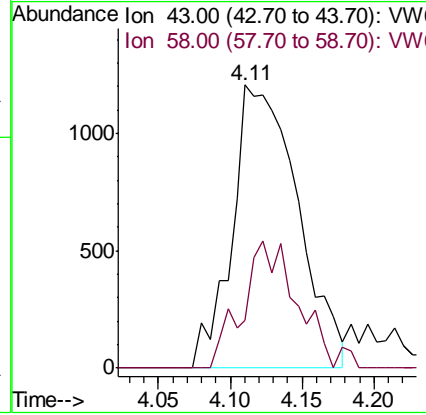
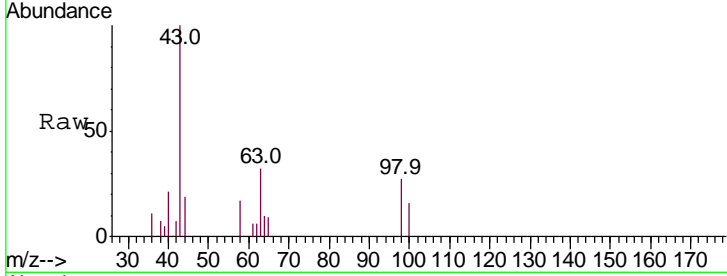




#13  
 Acetone  
 Concen: 2.830 ug/L  
 RT: 4.11 min Scan# 362  
 Delta R.T. -0.01 min  
 Lab File: VW014205.D  
 Acq: 02 Dec 2019 15:54

Instrument :  
 MSVOA\_W  
 ClientSampled :

Tgt Ion	Ratio	Lower	Upper
43	100		
58	5.2	0.0	65.4



#59  
 1,2,3-Trichloropropane  
 Concen: 4.989 ug/L  
 RT: 13.55 min Scan# 1911  
 Delta R.T. 0.79 min  
 Lab File: VW014205.D  
 Acq: 02 Dec 2019 15:54

Tgt Ion	Ratio	Lower	Upper
75	100		
77	37.9	25.9	38.9

