

Data Path : Z:\voasrv\HPCHEM1\MSVOA_W\Data\VW120221\
 Data File : VW021043.D
 Acq On : 02 Dec 2021 13:36
 Operator : SY/VA
 Sample : M4886-03
 Misc : 4.74g/10.0mL/MSVOA_W/SOIL
 ALS Vial : 14 Sample Multiplier: 1

Instrument :
 MSVOA_W
 ClientSampleId :
 EW9M9

Integration Parameters: LSCINT.P

Integrator: RTE
 Smoothing : OFF
 Sampling : 1
 Start Thrs : 0.2
 Stop Thrs : 0

Filtering: 5
 Min Area: 0 % of largest Peak
 Max Peaks: 100
 Peak Location: TOP

If leading or trailing edge < 100 prefer < Baseline drop else tangent >
 Peak separation: 5

Method : Z:\voasrv\HPCHEM1\MSVOA_W\Method\SFAMWLM111521SMA.M
 Title : SFAM01.0

Signal : TIC: VW021043.D\data.ms

peak #	R.T. min	first scan	max scan	last scan	PK TY	peak height	corr. area	corr. % max.	% of total
1	2.349	68	73	84	rVB	25360	42738	13.20%	2.041%
2	2.885	154	161	169	rBV	15538	32605	10.07%	1.557%
3	4.019	336	347	361	rBV2	30266	91857	28.37%	4.387%
4	4.141	363	367	375	rVB3	573	1325	0.41%	0.063%
5	4.251	380	385	386	rBV2	320	428	0.13%	0.020%
6	4.385	398	407	408	rBV2	516	1040	0.32%	0.050%
7	4.672	450	454	455	rBV	95	140	0.04%	0.007%
8	4.781	470	472	474	rBV	165	162	0.05%	0.008%
9	4.830	479	480	483	rVV	133	131	0.04%	0.006%
10	4.915	485	494	507	rVB3	4731	15551	4.80%	0.743%
11	5.135	528	530	535	rBV2	138	149	0.05%	0.007%
12	5.269	550	552	556	rBV	161	232	0.07%	0.011%
13	5.336	559	563	567	rVV	135	240	0.07%	0.011%
14	5.409	572	575	577	rVB	141	149	0.05%	0.007%
15	5.885	650	653	656	rBV	128	140	0.04%	0.007%
16	5.934	656	661	662	rBV	827	1155	0.36%	0.055%
17	6.141	692	695	697	rBV	113	134	0.04%	0.006%
18	6.391	733	736	737	rBV	148	148	0.05%	0.007%
19	6.421	739	741	743	rVV	118	158	0.05%	0.008%
20	6.470	746	749	752	rVV	97	131	0.04%	0.006%
21	6.757	794	796	799	rVB	126	142	0.04%	0.007%
22	7.080	840	849	855	rBV	9039	25156	7.77%	1.201%
23	7.458	909	911	914	rBV	152	153	0.05%	0.007%
24	7.555	924	927	928	rBV	126	133	0.04%	0.006%
25	7.647	931	942	955	rVV	58368	143446	44.31%	6.851%
26	7.878	977	980	982	rBV	139	150	0.05%	0.007%
27	7.939	989	990	993	rBV2	179	184	0.06%	0.009%
28	8.019	1001	1003	1006	rBV	90	135	0.04%	0.006%
29	8.183	1026	1030	1033	rBB	135	231	0.07%	0.011%
30	8.275	1033	1045	1060	rBV2	102721	323766	100.00%	15.462%
31	8.397	1060	1065	1070	rBV4	2210	4342	1.34%	0.207%
32	8.683	1109	1112	1113	rBV	157	125	0.04%	0.006%
33	8.750	1121	1123	1128	rBB	92	160	0.05%	0.008%
34	8.842	1128	1138	1151	rBB	122258	240043	74.14%	11.464%
35	8.933	1151	1153	1154	rBV	181	132	0.04%	0.006%
36	9.092	1174	1179	1184	rBV5	1392	2639	0.82%	0.126%

Data Path : Z:\voasrv\HPCHEM1\MSVOA_W\Data\VW120221\
 Data File : VW021043.D
 Acq On : 02 Dec 2021 13:36
 Operator : SY/VA
 Sample : M4886-03
 Misc : 4.74g/10.0mL/MSVOA_W/SOIL
 ALS Vial : 14 Sample Multiplier: 1

Instrument :
 MSVOA_W
 ClientSampleId :
 EW9M9

Integration Parameters: LSCINT.P

Integrator: RTE
 Smoothing : OFF
 Sampling : 1
 Start Thrs: 0.2
 Stop Thrs : 0

Filtering: 5
 Min Area: 0 % of largest Peak
 Max Peaks: 100
 Peak Location: TOP

If leading or trailing edge < 100 prefer < Baseline drop else tangent >
 Peak separation: 5

Method : Z:\voasrv\HPCHEM1\MSVOA_W\Method\SFAMWLM111521SMA.M
 Title : SFAM01.0

37	9.274	1201	1209	1217	rBV	74191	149513	46.18%	7.140%
38	9.652	1269	1271	1278	rBV2	384	616	0.19%	0.029%
39	9.768	1288	1290	1293	rVB	140	127	0.04%	0.006%
40	9.915	1313	1314	1317	rBV	107	125	0.04%	0.006%
41	10.036	1326	1334	1343	rVV	35400	63154	19.51%	3.016%
42	10.213	1359	1363	1366	rBV	402	558	0.17%	0.027%
43	10.244	1366	1368	1373	rVB	192	244	0.08%	0.012%
44	10.323	1373	1381	1387	rBV	132054	234446	72.41%	11.197%
45	10.390	1387	1392	1398	rVB	8275	14070	4.35%	0.672%
46	10.451	1400	1402	1404	rBV	113	127	0.04%	0.006%
47	10.579	1416	1423	1433	rVB	19179	33811	10.44%	1.615%
48	10.707	1436	1444	1449	rBV	5225	9689	2.99%	0.463%
49	10.860	1466	1469	1473	rBV3	613	940	0.29%	0.045%
50	10.920	1473	1479	1494	rVB	33403	58570	18.09%	2.797%
51	11.061	1498	1502	1509	rVV2	4014	6483	2.00%	0.310%
52	11.116	1509	1511	1514	rVB2	173	209	0.06%	0.010%
53	11.177	1517	1521	1524	rVB2	387	525	0.16%	0.025%
54	11.225	1527	1529	1532	rBB	150	175	0.05%	0.008%
55	11.439	1559	1564	1569	rBV	3779	5764	1.78%	0.275%
56	11.628	1588	1595	1605	rVB	125340	216226	66.78%	10.327%
57	11.731	1607	1612	1616	rVV	1159	1682	0.52%	0.080%
58	11.835	1623	1629	1636	rBV	4644	8205	2.53%	0.392%
59	12.000	1655	1656	1659	rVB	164	146	0.05%	0.007%
60	12.164	1678	1683	1689	rBB	3491	5326	1.65%	0.254%
61	12.463	1727	1732	1736	rBB2	926	1173	0.36%	0.056%
62	12.603	1750	1755	1763	rVV2	13968	20687	6.39%	0.988%
63	12.688	1763	1769	1776	rVB	51965	83568	25.81%	3.991%
64	12.804	1784	1788	1793	rVV	686	863	0.27%	0.041%
65	12.865	1793	1798	1802	rVV2	430	639	0.20%	0.031%
66	12.938	1802	1810	1816	rVB3	997	1911	0.59%	0.091%
67	13.097	1832	1836	1842	rBV2	458	720	0.22%	0.034%
68	13.182	1848	1850	1855	rVB	244	352	0.11%	0.017%
69	13.249	1856	1861	1864	rBV3	1702	2513	0.78%	0.120%
70	13.292	1864	1868	1874	rVB2	2285	3734	1.15%	0.178%
71	13.377	1878	1882	1883	rBV	204	239	0.07%	0.011%
72	13.493	1898	1901	1902	rVB	190	162	0.05%	0.008%
73	13.554	1904	1911	1918	rBV	65929	108338	33.46%	5.174%
74	13.646	1923	1926	1931	rVB2	692	919	0.28%	0.044%
75	13.761	1939	1945	1949	rVV2	303	577	0.18%	0.028%
76	13.853	1953	1960	1967	rVV	56498	93695	28.94%	4.475%

Data Path : Z:\voasrv\HPCHEM1\MSVOA_W\Data\VW120221\
 Data File : VW021043.D
 Acq On : 02 Dec 2021 13:36
 Operator : SY/VA
 Sample : M4886-03
 Misc : 4.74g/10.0mL/MSVOA_W/SOIL
 ALS Vial : 14 Sample Multiplier: 1

Instrument :
 MSVOA_W
 ClientSampleId :
 EW9M9

Integration Parameters: LSCINT.P

Integrator: RTE
 Smoothing : OFF Filtering: 5
 Sampling : 1 Min Area: 0 % of largest Peak
 Start Thrs: 0.2 Max Peaks: 100
 Stop Thrs : 0 Peak Location: TOP

If leading or trailing edge < 100 prefer < Baseline drop else tangent >
 Peak separation: 5

Method : Z:\voasrv\HPCHEM1\MSVOA_W\Method\SFAMWLM111521SMA.M
 Title : SFAM01.0

77	13.902	1967	1968	1972	rVV2	271	226	0.07%	0.011%
78	13.944	1972	1975	1981	rVB2	247	309	0.10%	0.015%
79	14.005	1983	1985	1987	rBV2	139	161	0.05%	0.008%
80	14.066	1987	1995	2002	rVB	9113	14638	4.52%	0.699%
81	14.298	2027	2033	2034	rBV3	244	307	0.09%	0.015%
82	14.353	2039	2042	2045	rVB2	136	140	0.04%	0.007%
83	14.523	2068	2070	2073	rVB2	230	143	0.04%	0.007%
84	14.591	2078	2081	2082	rBV	183	229	0.07%	0.011%
85	14.719	2096	2102	2109	rBV2	2007	3128	0.97%	0.149%
86	14.865	2124	2126	2129	rBV2	206	281	0.09%	0.013%
87	14.895	2129	2131	2134	rVV2	171	207	0.06%	0.010%
88	15.103	2163	2165	2166	rBV2	195	126	0.04%	0.006%
89	15.121	2166	2168	2169	rVV	198	134	0.04%	0.006%
90	15.139	2169	2171	2174	rVB2	203	207	0.06%	0.010%
91	15.273	2190	2193	2195	rVV2	158	178	0.05%	0.009%
92	15.310	2197	2199	2203	rVB2	133	154	0.05%	0.007%
93	15.359	2203	2207	2212	rBV	678	1050	0.32%	0.050%
94	15.432	2213	2219	2223	rVV	4204	6519	2.01%	0.311%
95	15.487	2224	2228	2233	rVB2	2868	4458	1.38%	0.213%
96	15.651	2253	2255	2258	rBV2	144	154	0.05%	0.007%
97	16.237	2350	2351	2353	rBV	163	133	0.04%	0.006%
98	16.426	2380	2382	2384	rBV2	196	188	0.06%	0.009%
99	16.566	2404	2405	2411	rVB2	133	188	0.06%	0.009%
100	16.633	2414	2416	2417	rBV2	341	262	0.08%	0.013%

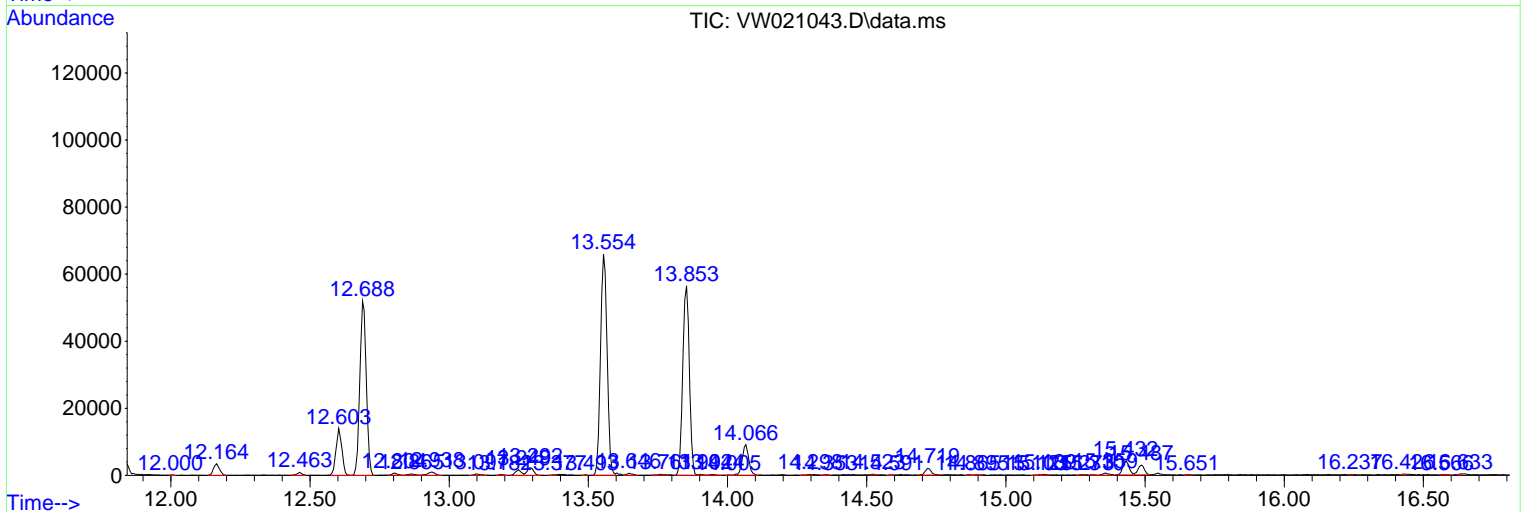
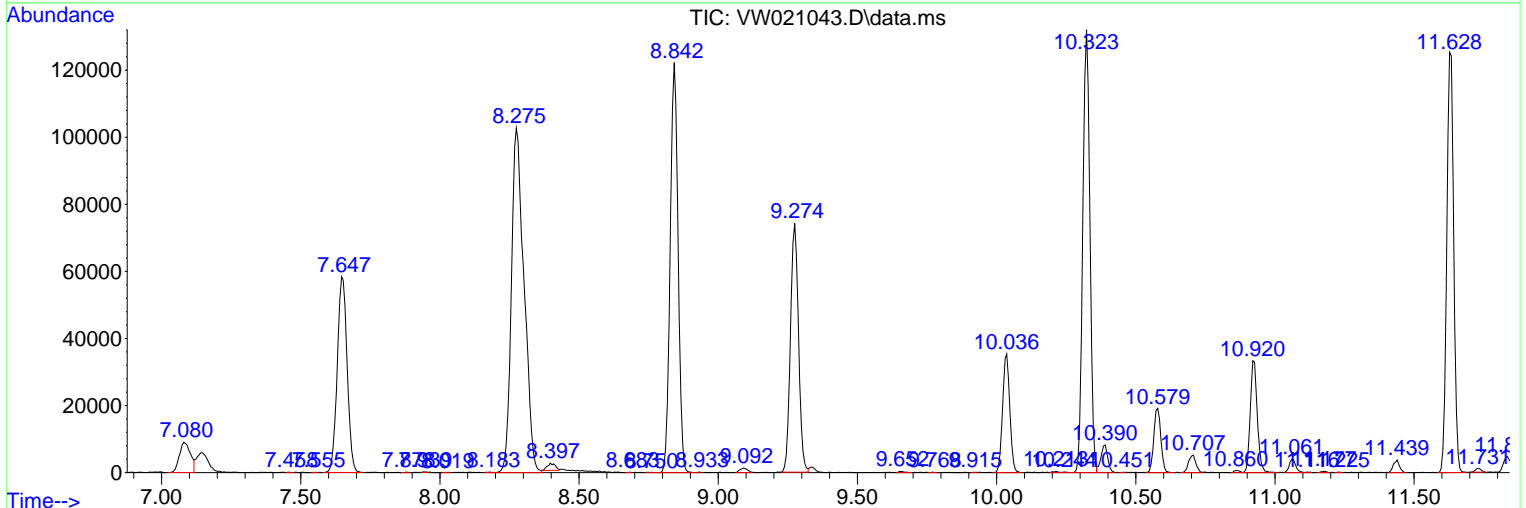
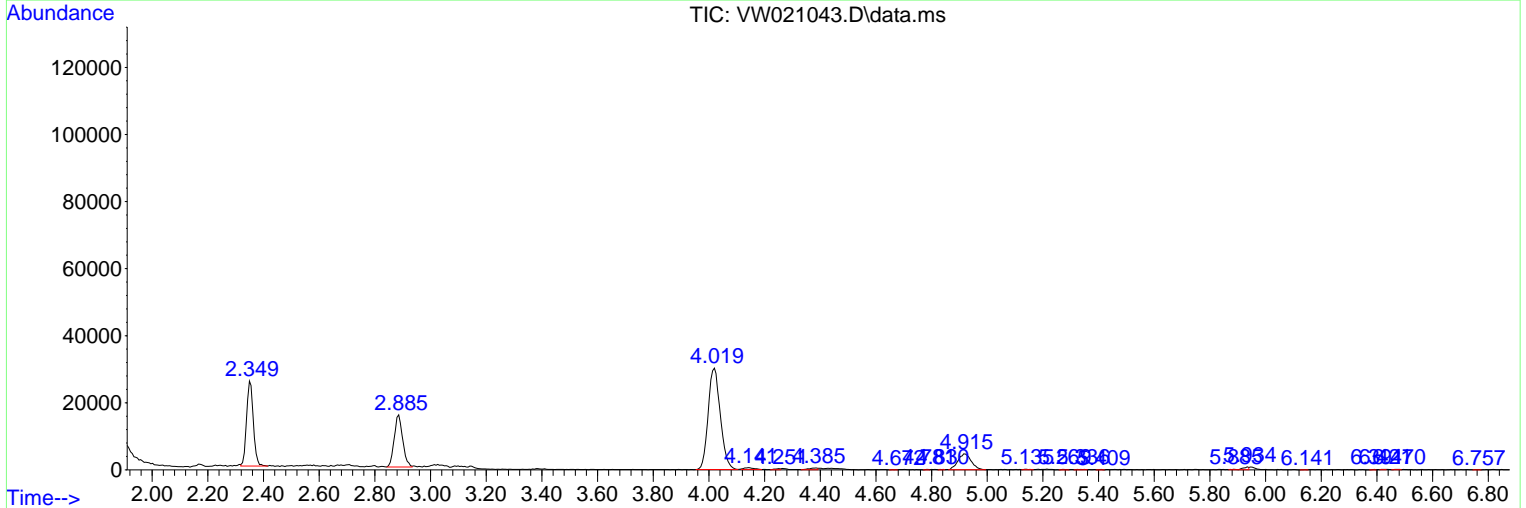
Sum of corrected areas: 2093891

Data Path : Z:\voasrv\HPCHEM1\MSVOA_W\Data\VW120221\
 Data File : VW021043.D
 Acq On : 02 Dec 2021 13:36
 Operator : SY/VA
 Sample : M4886-03
 Misc : 4.74g/10.0mL/MSVOA_W/SOIL
 ALS Vial : 14 Sample Multiplier: 1

Instrument :
 MSVOA_W
 ClientSampleId :
 EW9M9

Quant Method : Z:\voasrv\HPCHEM1\MSVOA_W\Method\SFAMWLM111521SMA.M
 Quant Title : SFAM01.0

TIC Library : C:\Database\NIST20.L
 TIC Integration Parameters: LSCINT.P



Data Path : Z:\voasrv\HPCHEM1\MSVOA_W\Data\VW120221\
 Data File : VW021043.D
 Acq On : 02 Dec 2021 13:36
 Operator : SY/VA
 Sample : M4886-03
 Misc : 4.74g/10.0mL/MSVOA_W/SOIL
 ALS Vial : 14 Sample Multiplier: 1

Instrument :
 MSVOA_W
 ClientSampleId :
 EW9M9

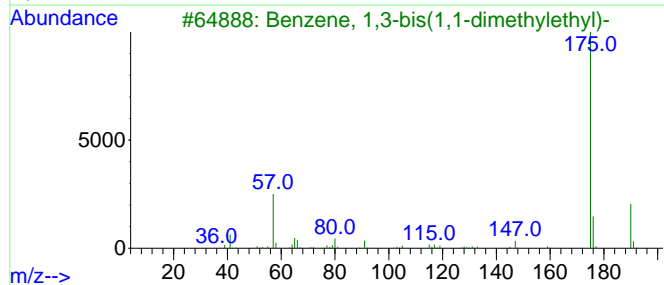
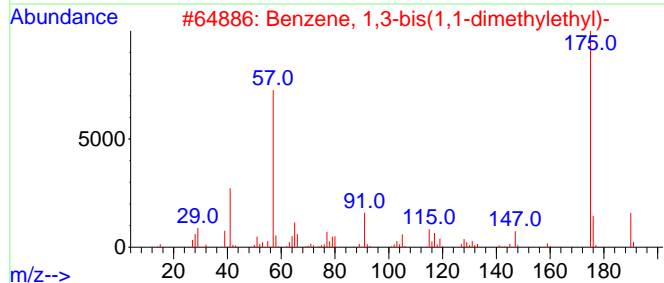
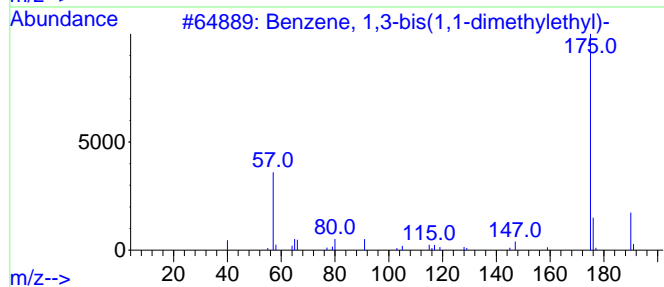
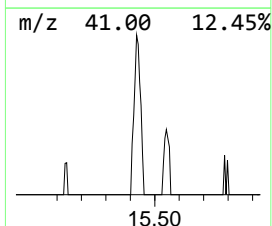
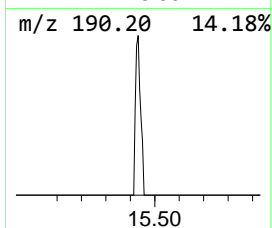
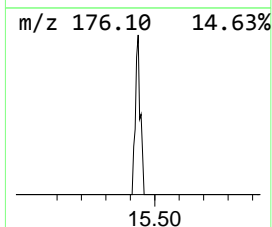
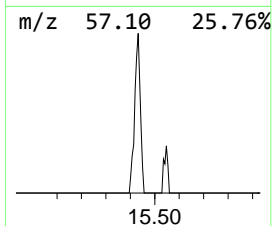
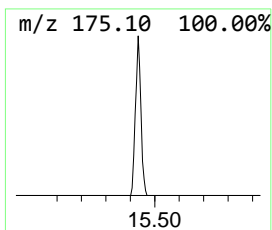
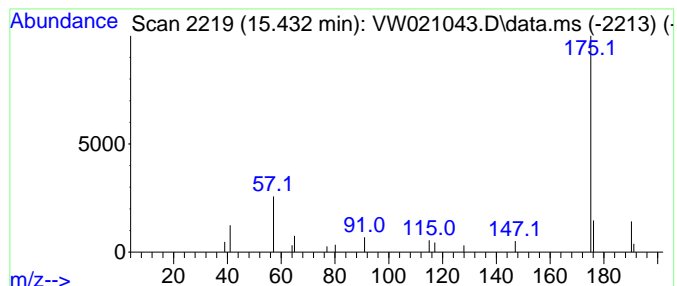
Quant Method : Z:\voasrv\HPCHEM1\MSVOA_W\Method\SFAMWLM111521SMA.M
 Quant Title : SFAM01.0

TIC Library : C:\Database\NIST20.L
 TIC Integration Parameters: LSCINT.P

 Peak Number 5 Benzene, 1,3-bis(1,1-dimeth... Concentration Rank 5

R.T.	EstConc	Area	Relative to ISTD	R.T.
15.432	1.50 ug/L	6519	1,4-Dichlorobenzene-d4	13.554

Hit#	of	5	Tentative ID	MW	MolForm	CAS#	Qual
1			Benzene, 1,3-bis(1,1-dimethyleth...	190	C14H22	001014-60-4	91
2			Benzene, 1,3-bis(1,1-dimethyleth...	190	C14H22	001014-60-4	91
3			Benzene, 1,3-bis(1,1-dimethyleth...	190	C14H22	001014-60-4	90
4			Benzene, 1,3-bis(1,1-dimethyleth...	190	C14H22	001014-60-4	87
5			Benzene, 1,4-bis(1,1-dimethyleth...	190	C14H22	001012-72-2	80



Data Path : Z:\voasrv\HPCHEM1\MSVOA_W\Data\VW120221\
Data File : VW021043.D
Acq On : 02 Dec 2021 13:36
Operator : SY/VA
Sample : M4886-03
Misc : 4.74g/10.0mL/MSVOA_W/SOIL
ALS Vial : 14 Sample Multiplier: 1

Instrument :
MSVOA_W
ClientSampleId :
EW9M9

Quant Method : Z:\voasrv\HPCHEM1\MSVOA_W\Method\SFAMWLM111521SMA.M
Quant Title : SFAM01.0

TIC Library : C:\Database\NIST0.L
TIC Integration Parameters: LSCINT.P

TIC Top Hit name	RT	EstConc	Units	Response	--Internal Standard--			
					#	RT	Resp	Conc
Benzene, 1,3-bi...	15.432	1.5	ug/L	6519	3	13.554	108338	25.0